

New York Hospital Queens Astoria Primary Care Clinic

Astoria, NY



SQ FT
5,000 BGSF



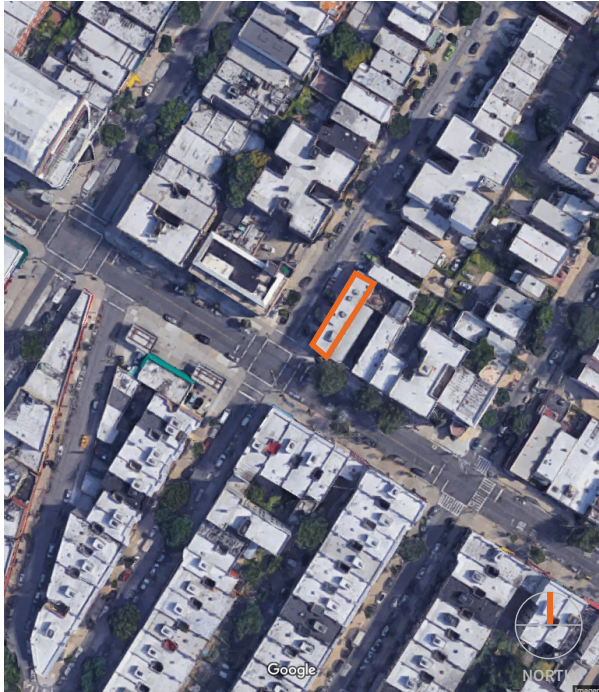
OWNER/AFFILIATION
New York Hospital
Queens (NYHQ)



ARCHITECT(S)
Michielli + Wyetzner
Architects



COMPLETION DATE
2014



SITE MAP

ABOUT | DESIGN INTENTIONS

The 5,000-square-foot facility is a satellite primary care clinic. This off-site primary care clinic—built between October 2013 and October 2014. Located in Astoria, on a corner site along the busy thoroughfare of 30th Avenue, the distinctive design is intended to give this satellite facility a powerful presence in the neighborhood.



New York Hospital Queens Astoria Primary Care Clinic

Astoria, NY

DESIGN STRATEGIES

Daylight

A perforated metal screen was used to mask the irregular pattern of existing windows on the ground floor. The screen allows daylight to enter during the day and artificial light to emit a mysterious glow on the exterior in the evening. Floating above the newly clad ground floor, the second story brick box is unchanged save for the front elevation where the two existing windows were combined into one overt horizontal opening increasing the natural light in the upper waiting room and forming a distinct composition in harmony with the glass and steel elevation below.

Visibility

With the interior highly visible from the outside, the client wanted a bright and inviting space. Michielli + Wyetzner incorporated Sierra Shadowstone on the entry wall as part of the hospital’s “brand.” In addition, the firm used an illuminated polycarbonate ceiling that calls attention to the building in the neighborhood. And a bold color palette was chosen to give the clinic’s interior a strong identity. Distinct geometric volumes interact with each other at the reception desk and a new boldly colored enclosed stair volume provides a dramatic transition between floors and is visible from the street. In particular, Wyetzner said, he wanted to call attention to the new stairs, so they were painted blue on the outside and the inside.



SITE PLAN



DESIGN STRATEGIES

Neighborhood Presence

Located in Astoria, on a corner site along the busy thoroughfare of 30th Avenue, the distinctive design is intended to give this satellite facility a powerful presence in the neighborhood. A new entrance canopy was added to provide shelter and act as an emblem for the facility. The canopy leads into a ceiling plane within the waiting room; visible from the exterior it creates a strong form along the street.



New York Hospital Queens Astoria Primary Care Clinic

Astoria, NY

DESIGN STRATEGIES

Function & Circulation

The two-story brick building was completely gutted to accommodate new exam and consultation rooms. The main circulating corridor on both floors is located along the perimeter of the cross street to allow natural light to enter into the patient area. Waiting rooms on the first and second floor will allow ample amounts of controlled natural light into the space.

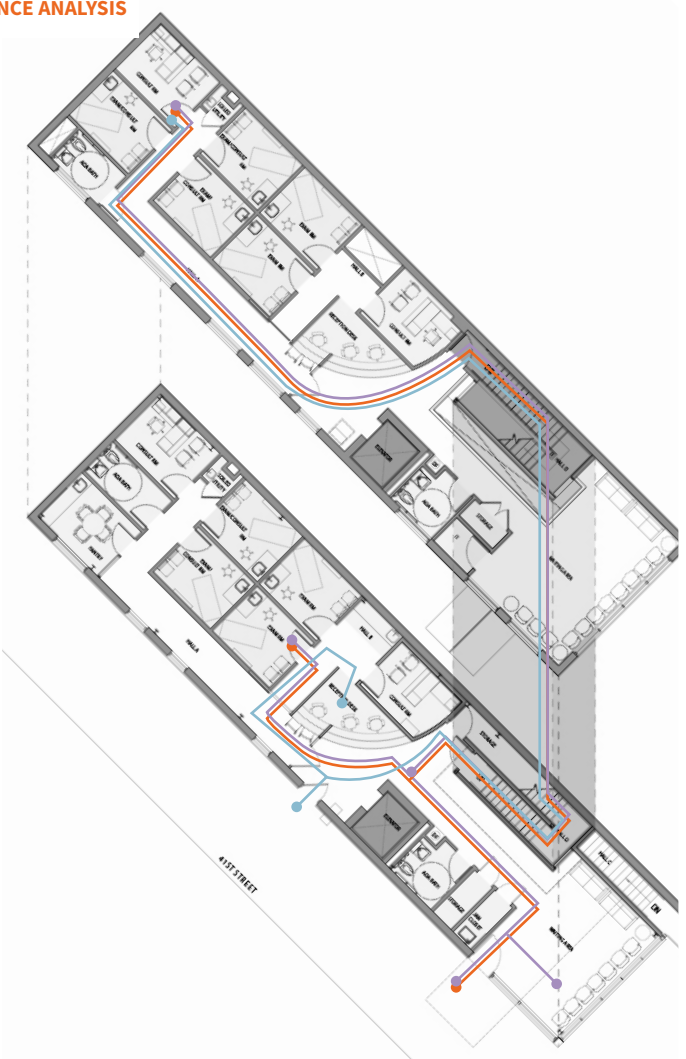
KEY

- Patient Care
- Registration/Waiting
- Support

GROUND LEVEL & FIRST LEVEL



TRAVEL DISTANCE ANALYSIS



KEY SPACES:

- Exam Rooms (92sf)
- Consult Rooms (92sf)
- Registration (86sf)
- Waiting Area(326-364sf)

DEPARTMENTAL GROSS SQUARE FOOT TAKE-OFFS

	Net	Gross
Patient Care	1210 SF	1957 SF
Registration/Waiting	862 SF	1492 SF

TRAVEL DISTANCE ANALYSIS

- Patient 74ft - 163ft
- Family 20 ft - 163 ft
- Staff 41ft - 119 ft

New York Hospital Queens Astoria Primary Care Clinic

Astoria, NY

DESIGN STRATEGIES

Volume, Color & Material

The clinic's two floors consist of exam rooms, consultation rooms, waiting and reception, and support spaces. The exterior is painted exposed steel, perforated corrugated metal, glass, and brick. It was originally an existing one-story brick building to which the landlord added a second floor several years ago.

Distinct **geometric volumes** interact with each other at the reception desk and a new boldly-colored enclosed stair volume provides a **dramatic transition** between floors and is also visible from the street. In addition, an illuminated ceiling spills light onto the sidewalk through the floor to ceiling glass contributing to the **unique presence** of NYHQ in the surrounding area.

PROJECT SUMMARY:

Project: New York Hospital Queens Astoria Primary Care Clinic
Project location: 41-01 30th Ave, Astoria, NY
Owner/Client: New York Hospital Queens (NYHQ)
Architect: Michielli + Wyetzn Architects
Structural engineer: Engineering Group Associates
General contractor: PM Construction
MEP engineer: ME Engineers
Photographs/Illustrations: Alexander Severin
Building area GSF: 5,000
Construction start date: October 2013
Substantial completion date: October 2014



AIA/AAH DESIGN AWARD WINNER

Category: Innovations in Planning and Design Research, Built and Unbuilt

JURY COMMENT

- Within an urban neighborhood setting, this adaptive re-use manages to stand out while fitting in.
- It is a subtle yet highly effective transformation of an ordinary building into a welcoming and attractive community clinic.

