

Kerry Feeney - Kristin Sidoryk - Barrie Ottenbreit - Margo Lee

numberTEN
architectural group

An Architectural Viewpoint on Female Incarceration

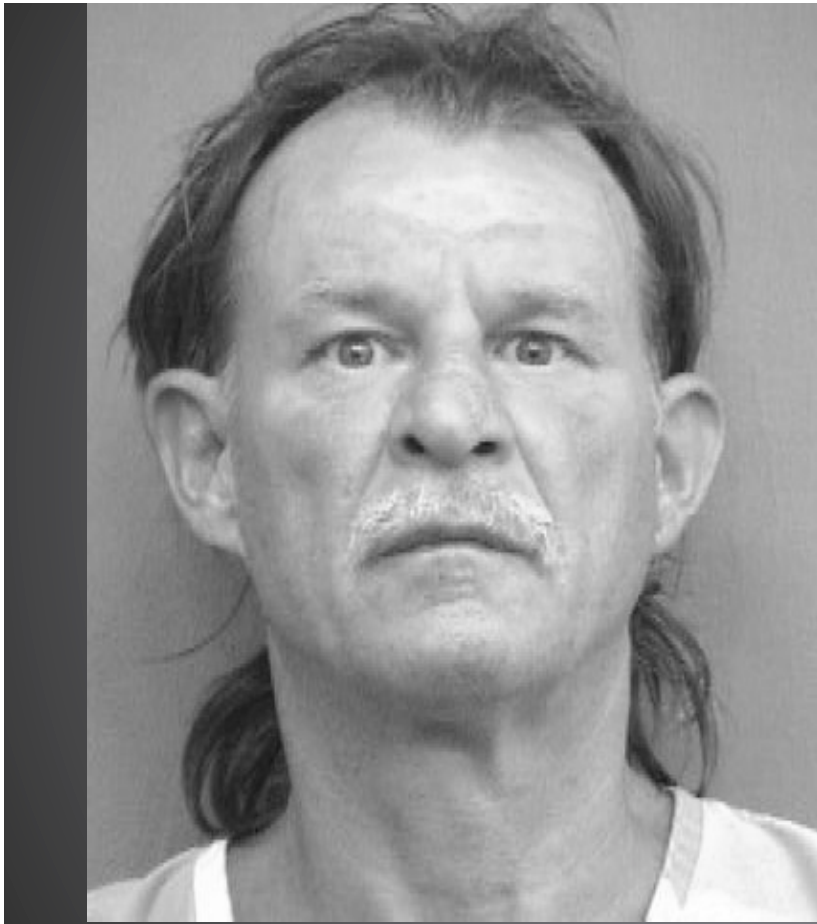
**POETIC
PRAGMATISM**

NOVEMBER 2-4, 2011
LOS ANGELES, CA

2011 Academy of Architecture Justice National Conference

CELEBRATING CREATIVE, COST EFFECTIVE, AND FUNCTIONAL DESIGN FOR JUSTICE FACILITIES





Collective Mind's Eye of a Criminal

An Architectural Viewpoint on Female Incarceration



Collective Mind's Eye of a Criminal

An Architectural Viewpoint on Female Incarceration



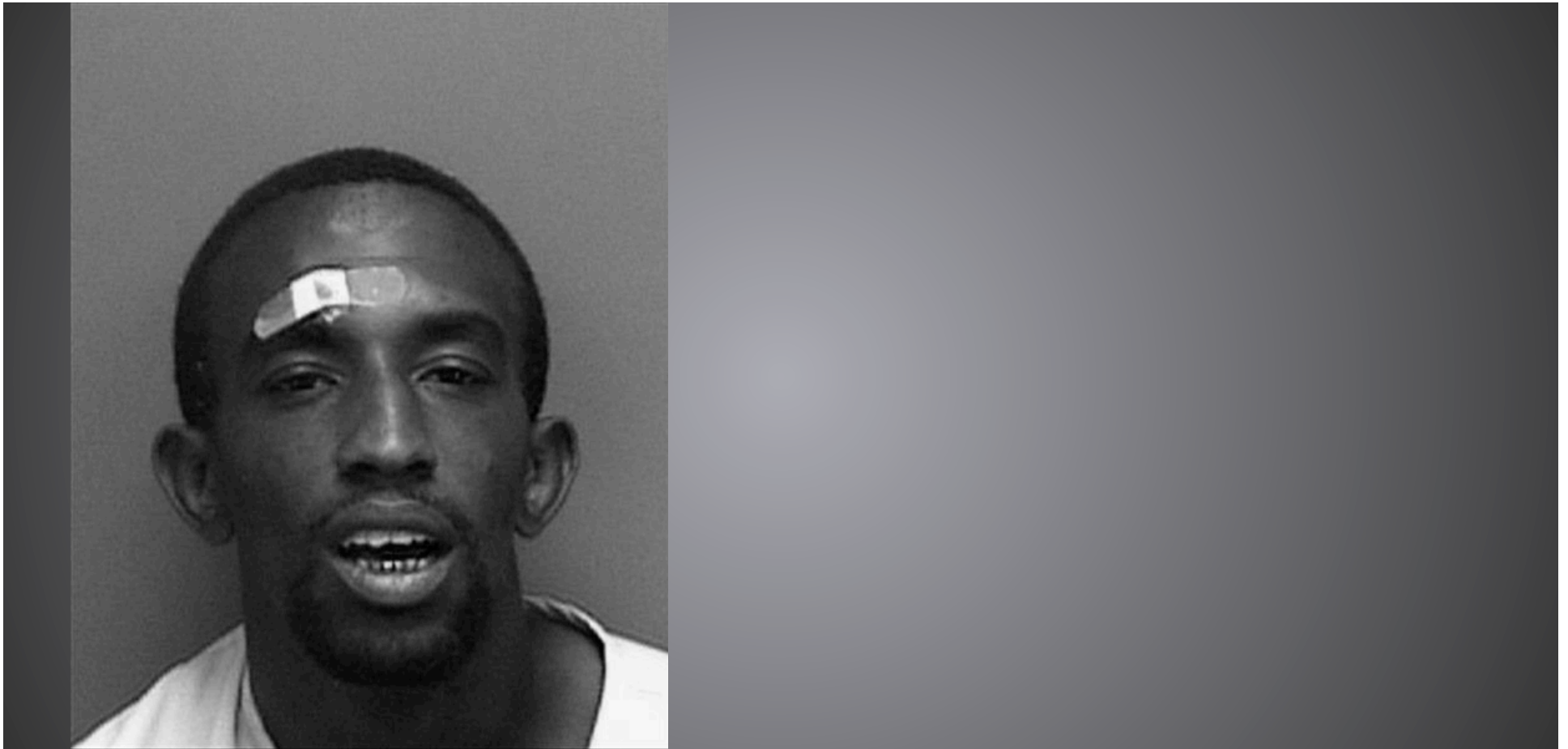
Collective Mind's Eye of a Criminal

An Architectural Viewpoint on Female Incarceration



Collective Mind's Eye of a Criminal

An Architectural Viewpoint on Female Incarceration



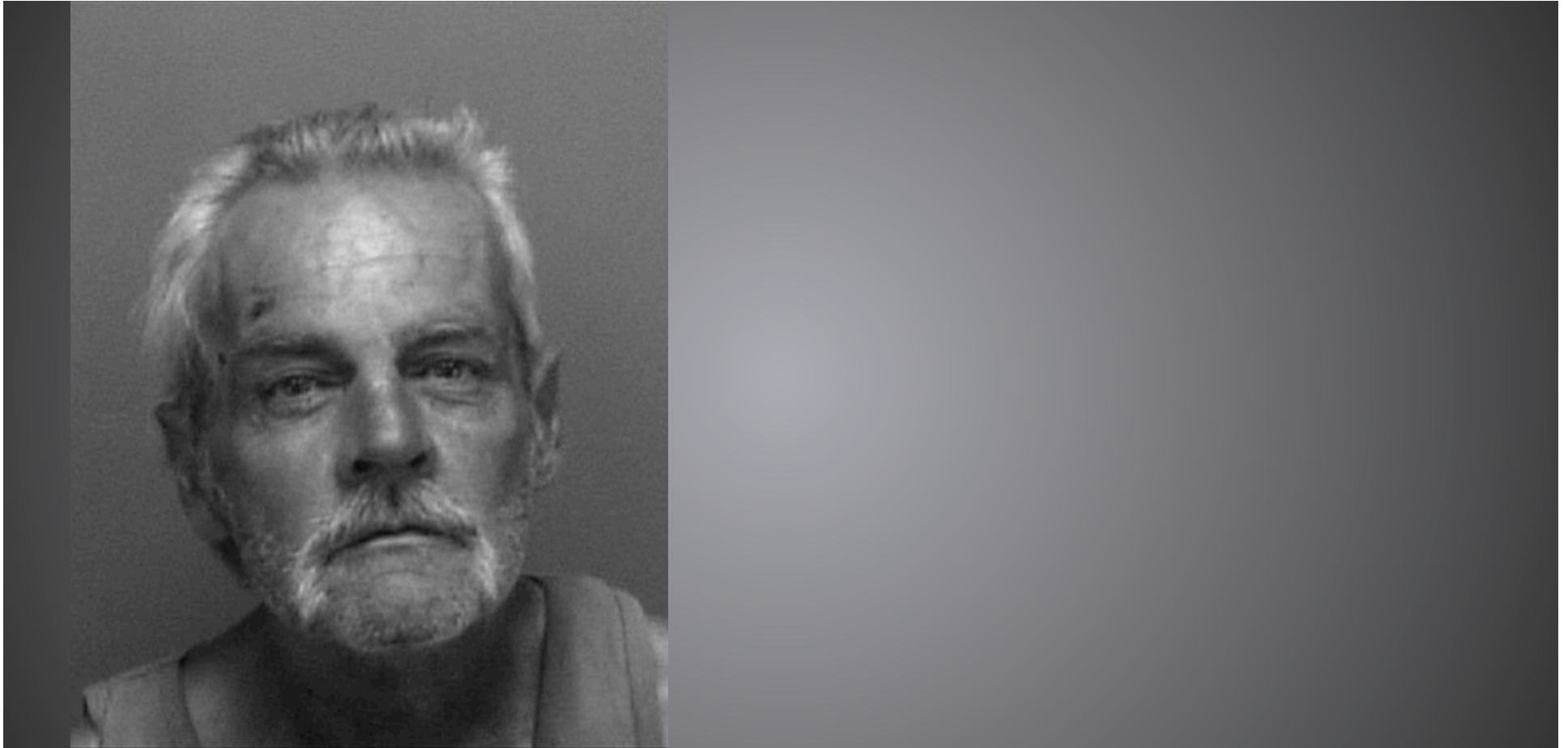
Collective Mind's Eye of a Criminal

An Architectural Viewpoint on Female Incarceration



Collective Mind's Eye of a Criminal

An Architectural Viewpoint on Female Incarceration



Collective Mind's Eye of a Criminal

An Architectural Viewpoint on Female Incarceration



Collective Mind's Eye of a Criminal

An Architectural Viewpoint on Female Incarceration



Collective Mind's Eye of a Criminal

An Architectural Viewpoint on Female Incarceration



Collective Mind's Eye of a Criminal

An Architectural Viewpoint on Female Incarceration



Collective Mind's Eye of a Criminal

An Architectural Viewpoint on Female Incarceration



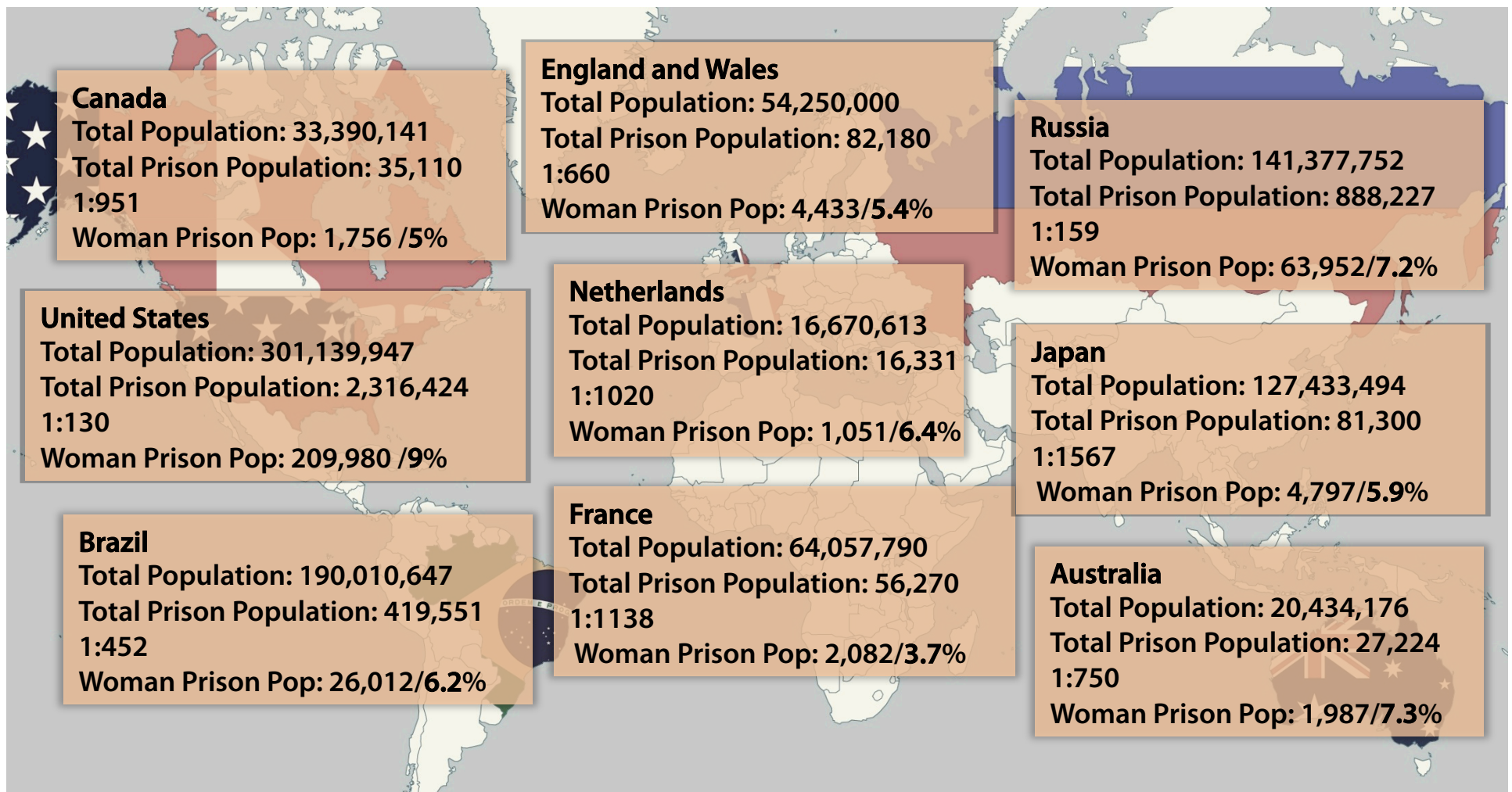
Collective Mind's Eye of a Criminal

An Architectural Viewpoint on Female Incarceration



Collective Mind's Eye of a Criminal

An Architectural Viewpoint on Female Incarceration



Source: International Profile of Women's Prisons, International Centre for Prison Studies, King's College London, The University of London, London, UK, April 2008.

Selected Prison Populations by Country

An Architectural Viewpoint on Female Incarceration

“ she is largely *invisible* to prison administrators in critical ways and that their needs and interests continue to be unmet in a correctional system designed primarily for sentenced men.”

Source: Canadian Human Rights Commission, Protecting Their Rights: A Systemic Review of Human Rights in Correctional Services for Federally Sentenced Women, Ottawa December 2003.

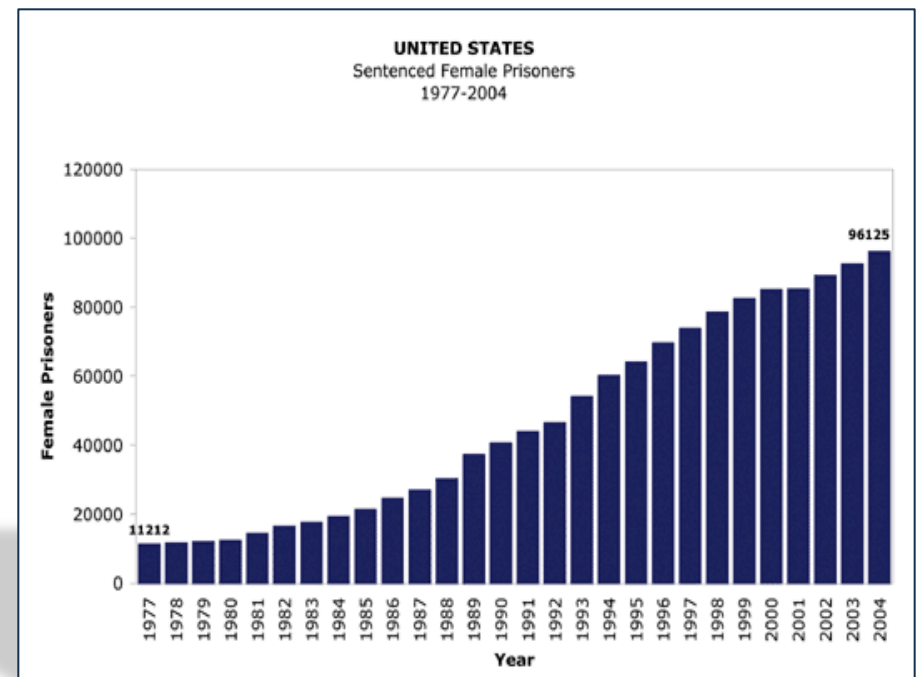
“Repression is every bit as strong as in men's prisons; it is simply much more subtle... Despite the less threatening appearance of women's prisons, the conditions for women prisoners are usually worse than those for male prisoners. For example, women prisoners have more restricted access to legal libraries, medical and dental care, and vocational and educational opportunities. ”

Source: Zaitzow, Barbara, "Empowerment Not Entrapment: Providing Opportunities for Incarcerated Women to Move Beyond "Doing Time", Justice Policy Journal, Volume 3, No. 1. Spring 2006.

“ Men go into Prison and they expect the women will maintain the house and family...the great majority are more concerned about themselves and what will happen when they come out than what is happening out there. Women have an entirely different mental approach to it when they go in. They are concerned, will the house still be there: what is happening to the children? ”

- Female offenders are the fastest growing prison population.
- In Canada there has been a **200%** increase in the last decade.
- In the United States between 1977 and 2004, the female imprisonment rate grew by **757%** (with an average annual change of 8% per year). Nearly **TWICE** the 388% increase in the male prison population.

Source: Women's Prison Association, Institute on Women and Criminal Justice, The Punitiveness Report, Hard Hit: The Growth in the Imprisonment of Women 1977-2004, by Dr. Natasha A. Frost, Northeastern University



Growing Female Prison Population



Time Line

An Architectural Viewpoint on Female Incarceration



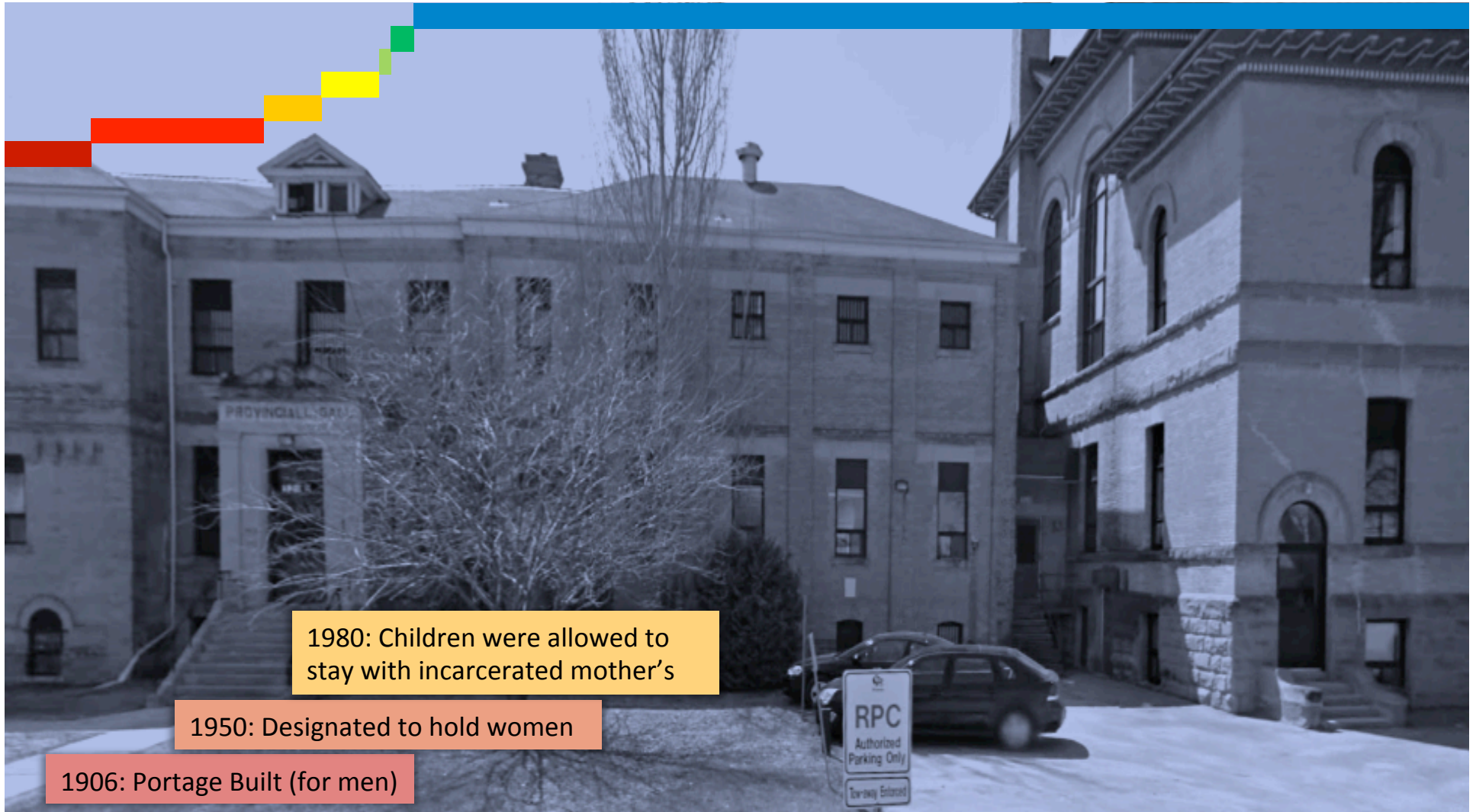
Time Line



1950: Designated to hold women

1906: Portage Built (for men)

Time Line

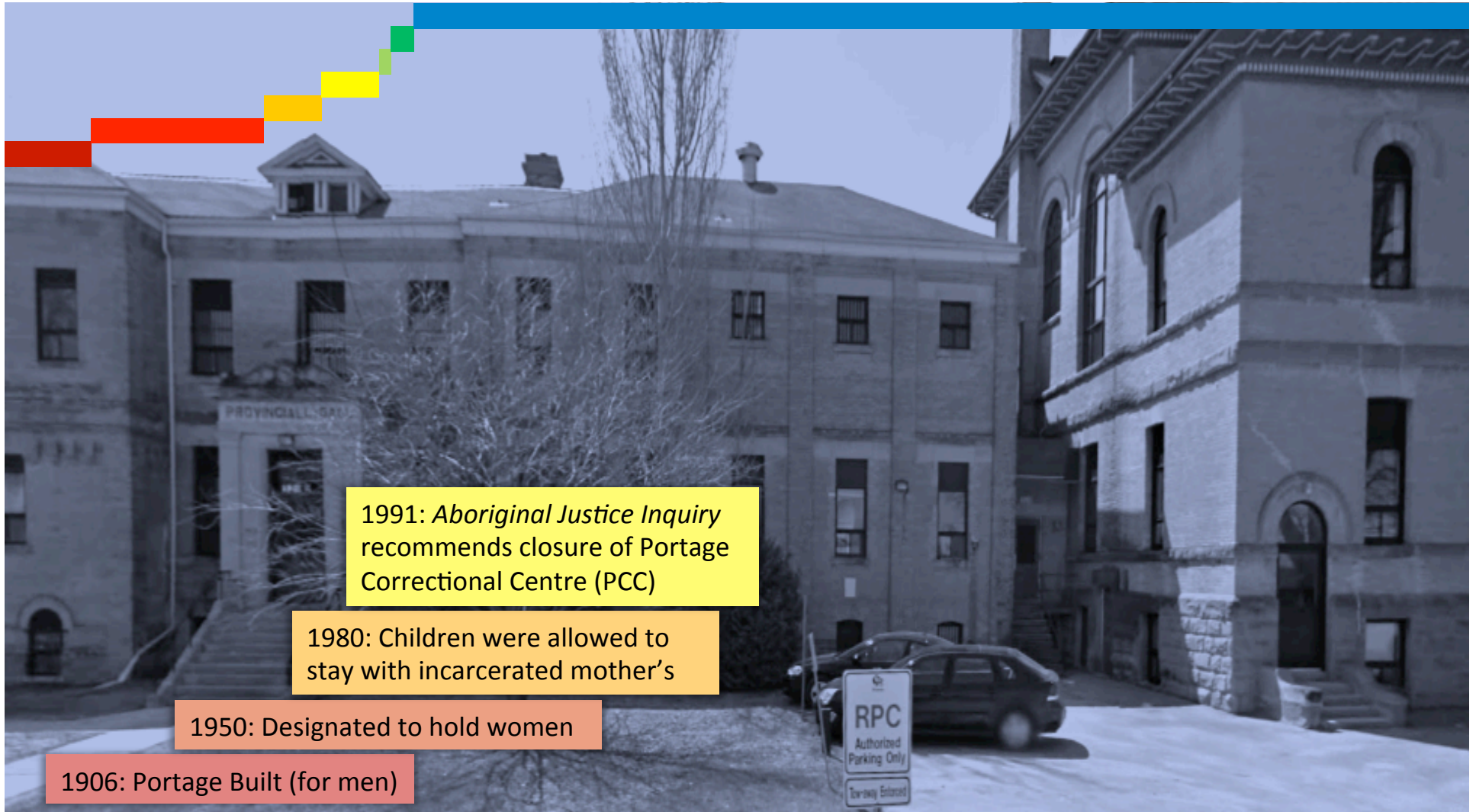


1980: Children were allowed to stay with incarcerated mother's

1950: Designated to hold women

1906: Portage Built (for men)

Time Line



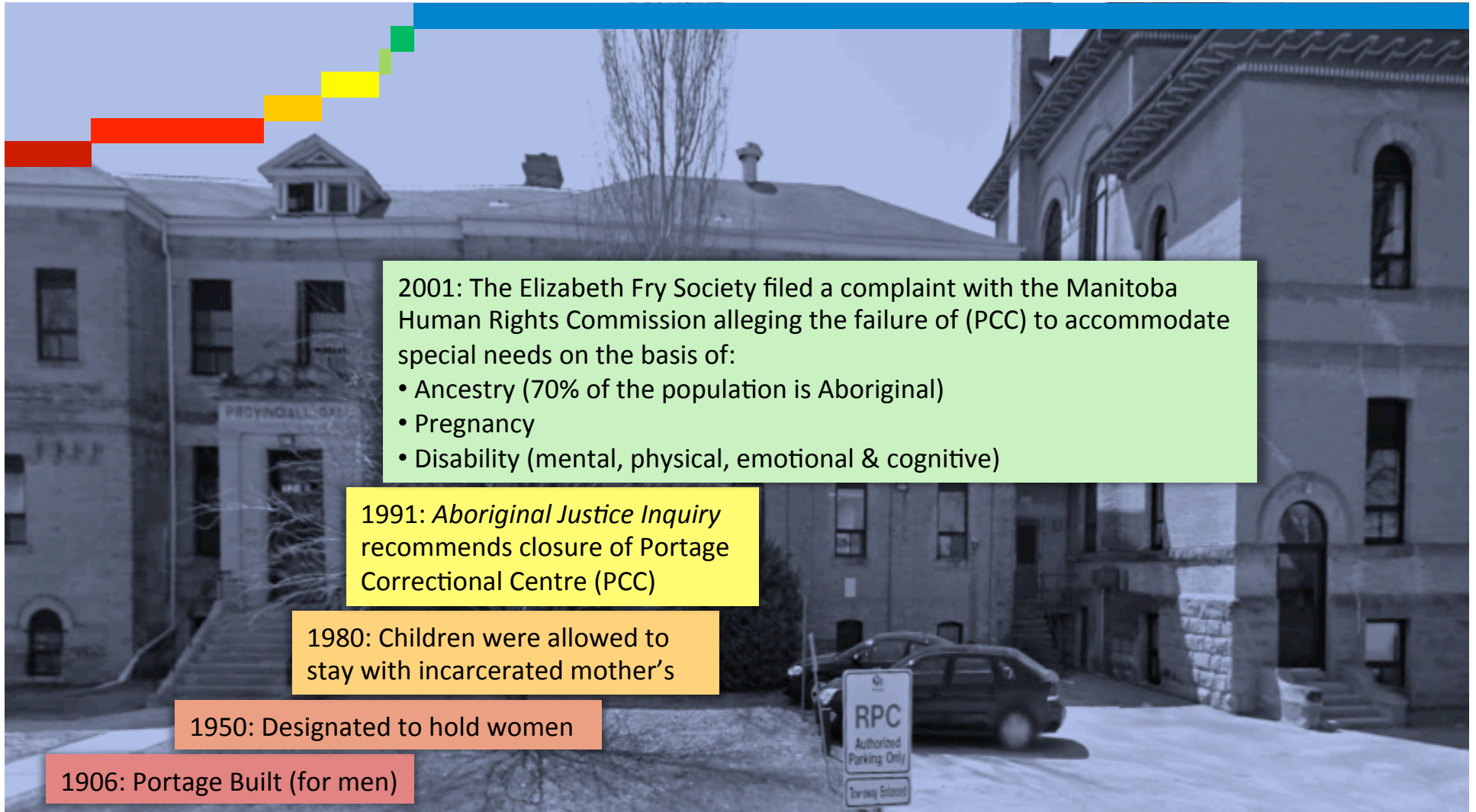
1991: *Aboriginal Justice Inquiry* recommends closure of Portage Correctional Centre (PCC)

1980: Children were allowed to stay with incarcerated mother's

1950: Designated to hold women

1906: Portage Built (for men)

Time Line



2001: The Elizabeth Fry Society filed a complaint with the Manitoba Human Rights Commission alleging the failure of (PCC) to accommodate special needs on the basis of:

- Ancestry (70% of the population is Aboriginal)
- Pregnancy
- Disability (mental, physical, emotional & cognitive)

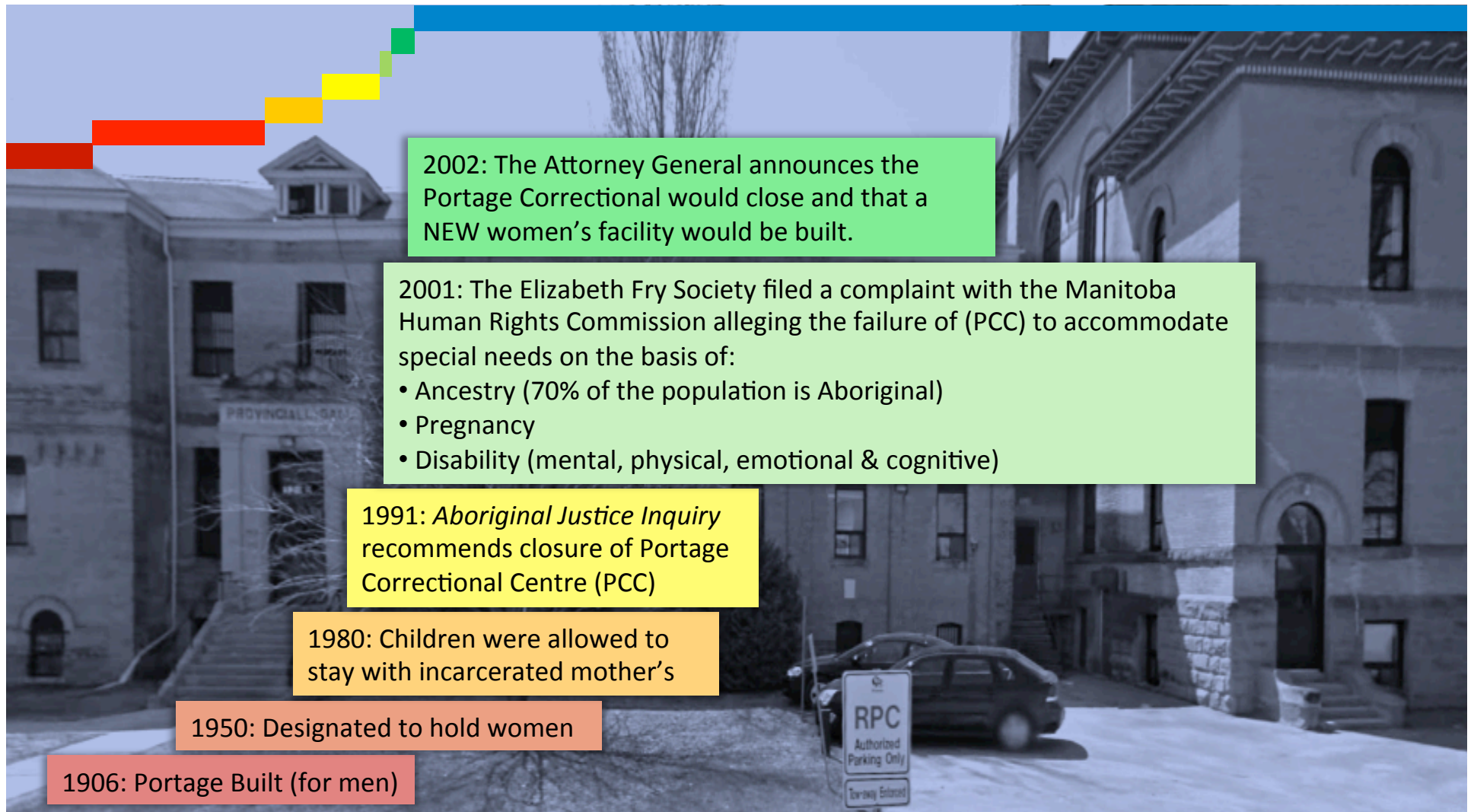
1991: *Aboriginal Justice Inquiry* recommends closure of Portage Correctional Centre (PCC)

1980: Children were allowed to stay with incarcerated mother's

1950: Designated to hold women

1906: Portage Built (for men)

Time Line



2002: The Attorney General announces the Portage Correctional would close and that a NEW women's facility would be built.

2001: The Elizabeth Fry Society filed a complaint with the Manitoba Human Rights Commission alleging the failure of (PCC) to accommodate special needs on the basis of:

- Ancestry (70% of the population is Aboriginal)
- Pregnancy
- Disability (mental, physical, emotional & cognitive)

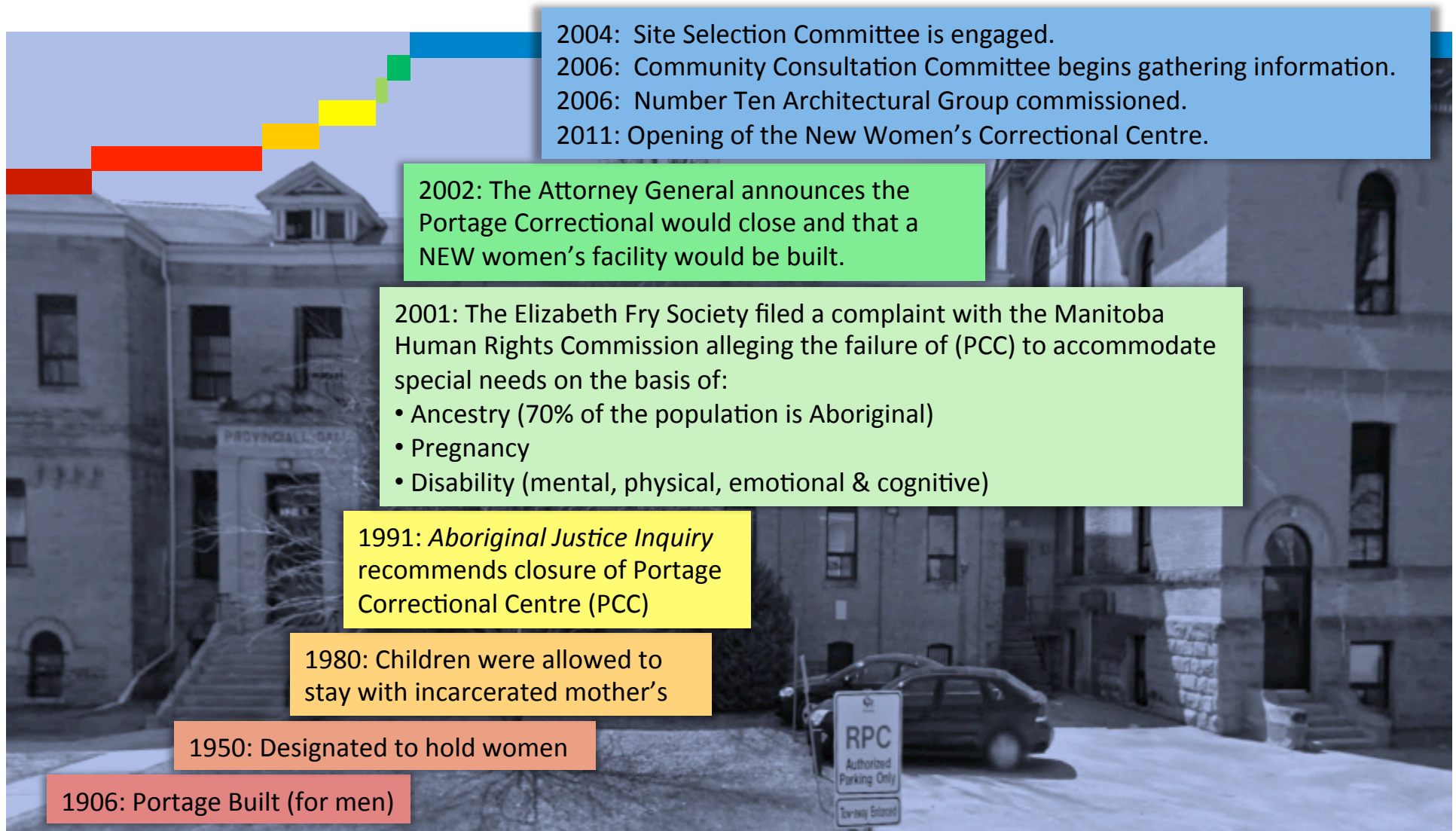
1991: *Aboriginal Justice Inquiry* recommends closure of Portage Correctional Centre (PCC)

1980: Children were allowed to stay with incarcerated mother's

1950: Designated to hold women

1906: Portage Built (for men)

Time Line



2004: Site Selection Committee is engaged.

2006: Community Consultation Committee begins gathering information.

2006: Number Ten Architectural Group commissioned.

2011: Opening of the New Women's Correctional Centre.

2002: The Attorney General announces the Portage Correctional would close and that a NEW women's facility would be built.

2001: The Elizabeth Fry Society filed a complaint with the Manitoba Human Rights Commission alleging the failure of (PCC) to accommodate special needs on the basis of:

- Ancestry (70% of the population is Aboriginal)
- Pregnancy
- Disability (mental, physical, emotional & cognitive)


1991: *Aboriginal Justice Inquiry* recommends closure of Portage Correctional Centre (PCC)

1980: Children were allowed to stay with incarcerated mother's

1950: Designated to hold women

1906: Portage Built (for men)

Time Line



Ten Points for Consideration in the Design of a Women's Correctional Centre

An Architectural Viewpoint on Female Incarceration



1. Client Considerations

1 Client Considerations – Understanding the Female Offender

- *Relationships*
- *Community*
- *Health and Healing*
- *Need to process/
communicate*
- *Holistic Approach*



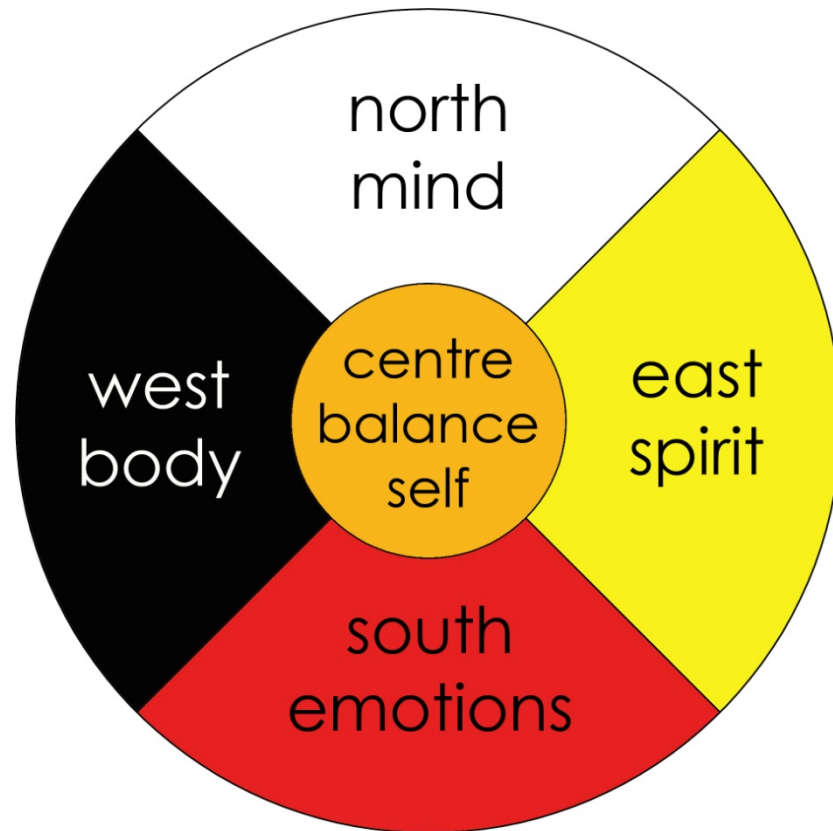
Female Offender with Child at Residential Parenting Program at the Washington State Correctional Center for Women , Gig Harbor, Washington

Points for Consideration

1 Client Considerations – Understanding the Female Offender

Holistic Approach

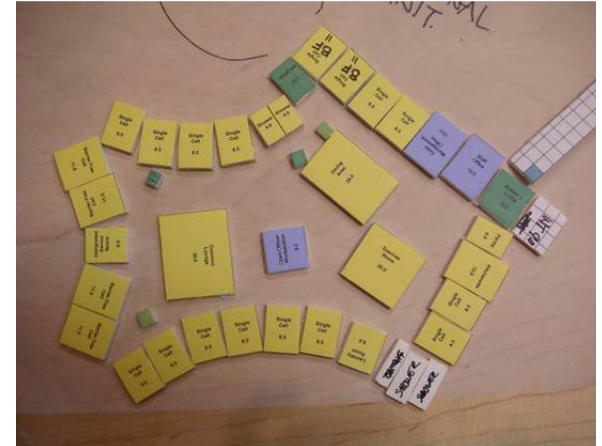
- *Effective approach for female offenders*
- *Address personal, family and social issues as well as the cultural context and the underlying causes of women's offending.*



Points for Consideration

1 Client Considerations – Collaborative Vision

- *Assemble all stakeholders:*
 - In seeking input into the design, services and programming of the new Women's Correctional Centre (WCC), in Manitoba, The Executive Director of Adult Corrections sent invitation to **77** organizations that work with or advocate on behalf of women.
- *Visioning Sessions*
 - Non-institutional feel
 - Emphasis on healing and education
 - Create a community
 - Green building (LEED silver/ geothermal/ passive solar)
 - Natural materials and natural light
 - Integrate color and elements (fire, water, earth, air)
 - Operational efficiency
 - Ease of maintenance is important
 - No sick building (view, daylight, fresh air)
- *Nominate a "Vision Keeper"*



Points for Consideration



2. Programmatic Considerations

2 Programmatic Considerations – Visiting Areas

- *Children's Visiting*

- Environment
- Age appropriate activities
- Sound considerations

- *Adult Visiting*

- Maintaining relationships is vital to successful re-integration

- *Non-Contact Visiting (typical in male facilities)*

- Safety of visitor and other offenders



Contact Visiting
WCC, Headingley, MB



Children's Visiting
Women's Correctional Centre (WCC)
Headingley Manitoba

Points for Consideration

2 Programmatic Considerations – Visiting Areas

- *Mother-Child Visiting (Separate Living Unit)*

- *overnight*
- *weekend*
- *full-time live in arrangements: varying opinions as to appropriate age for children to leave : 12 months - 6yrs of age*

- *Video Visiting*

- *distance from family is negated*

- *Conjugal Visiting*

- *policy varies between facilities*



Residential Parenting Program
Washington State Correctional Centre for Women



Mother-Child Unit
Women's Correctional Centre, Headingley, MB

Points for Consideration

2 Programmatic Considerations – Health Clinic Treatment

- *All encompassing health care approach*
 - *mind, body, emotion*
- *Psychological*
- *Dental/OB/GYN Care*
- *Palliative Care*



Corridor - Health Clinic
WCC, Headingly, MB



Lounge - Health Clinic
WCC, Headingly, MB



Nurse's Station - Health Clinic
Women's Correctional Centre, Headingly, MB

Points for Consideration

2 Programmatic Considerations – Program Spaces

- *Spiritual Care*

- Elders and Chaplains
- Multi-denominational space
- Cultural teachings; sharing circles
- Individual and group spaces

- *Library*

- Access to literacy, resources, employment opportunities

- *Classrooms*

- Focus on education and employment – practical and applicable skills

- *Arts and Crafts*

- Leisure and recreational time
- Programs for mother-children
- Stress management/reduction



View of Chapel at Norway's Halden Prison
by Architect Hans Henrik Høiland

Points for Consideration

2 Programmatic Considerations – Program Spaces

- *Personal Grooming*
 - Self-care and personal hygiene
- *Prison Industry*
 - Promote marketable skills
 - Institutional self-sufficiency
 - Kitchen, laundry, landscaping
- *Food Services*
 - Promote marketable skills
 - Food preparation, basic food handlers certification and safety
- *Video Courts*
 - Lessen burden of transportation costs to court.



Classroom at Grand Valley Institute for Women in Kitchener, Ontario by KPMB Architects.

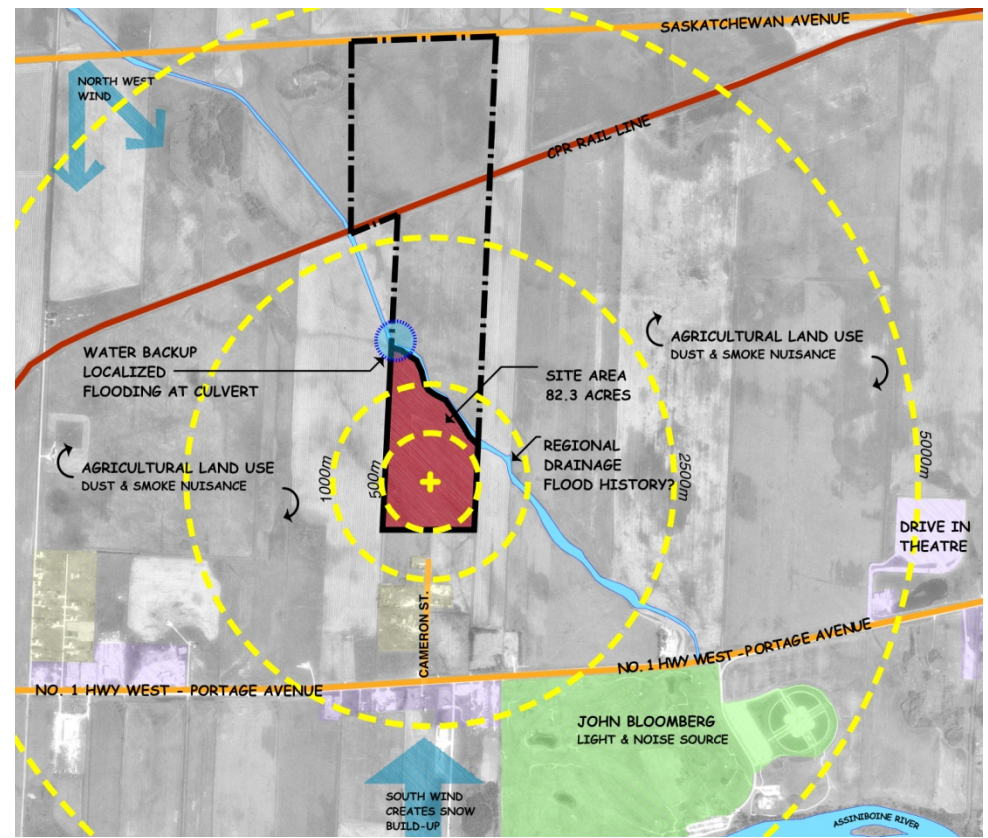
Points for Consideration



3. Site Considerations

3 Site Selection

- Proximity to population centres – accessible to offender families, community support agencies, legal counsel & courts
- Site Access
- Stakeholder & community acceptance
- Regional economic impact
- Ability to share services with other correctional or related facilities
- Future expansion
- Operating costs
- Land costs



Points for Consideration

3 Site Considerations

- *Community and Facility Safety & Security*

- Flight risk (relatively low for women)
- Risk of intrusion (abusive partners/gang members)
- Risk of contra-band entering facility through perimeter
- Effect on visiting children and guardians



Site Plan of WCC in Headingley Manitoba,
by HTFC Landscape Architects.

Points for Consideration

3 Site – Perimeter Security

- High Security :
 - Concertina wire or “razor” wire c/w perimeter intruder detection (PID) system



View of “J” fence at Women's Correctional Centre (WCC) in Headingley, Manitoba

- Medium Security :
 - “J” style security fence with PID system
 - Use of building as part of the perimeter security

Points for Consideration

3 Site – Perimeter Security

- Low Security :
 - Residential style fence with PID system



**Aerial View of Grand Valley Institute For Women,
Kitchener, Ontario**

Photo Source: Architectural Record



**Cottage Unit at Grand Valley Institute For Women
w/ perimeter fence beyond**

Photo Source: Architectural Record

Points for Consideration

3 Site – Perimeter Security

- No Barrier



Arial view of MCF Shakopee
Photo Source: DOC State of Minnesota



**Three-foot hedge around Minnesota Correctional Facility (MCF)
Shakopee, Shakopee, MN.**

Photo Source: Ingrid Young for the NY Times

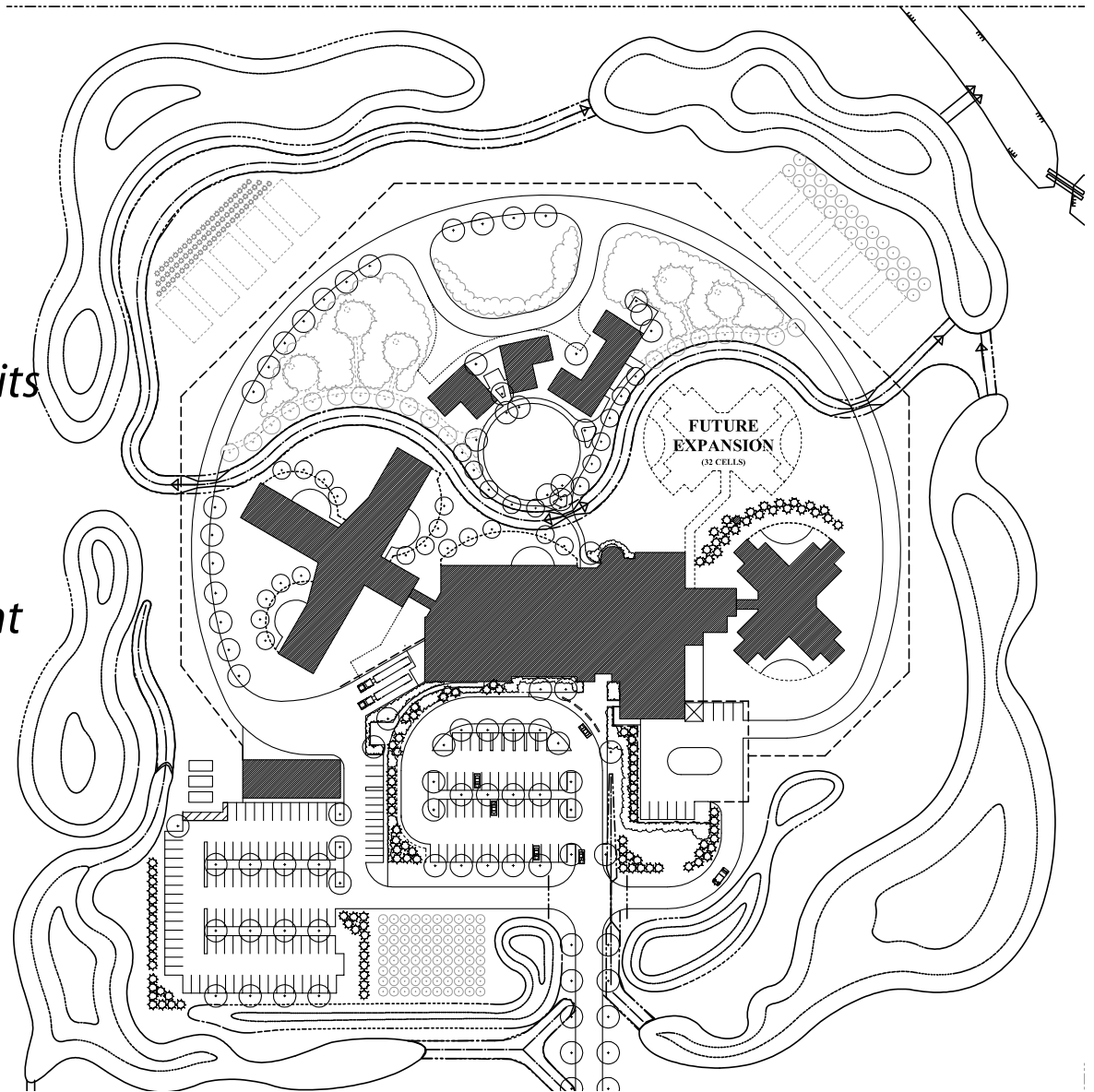
Points for Consideration



4. Building Considerations

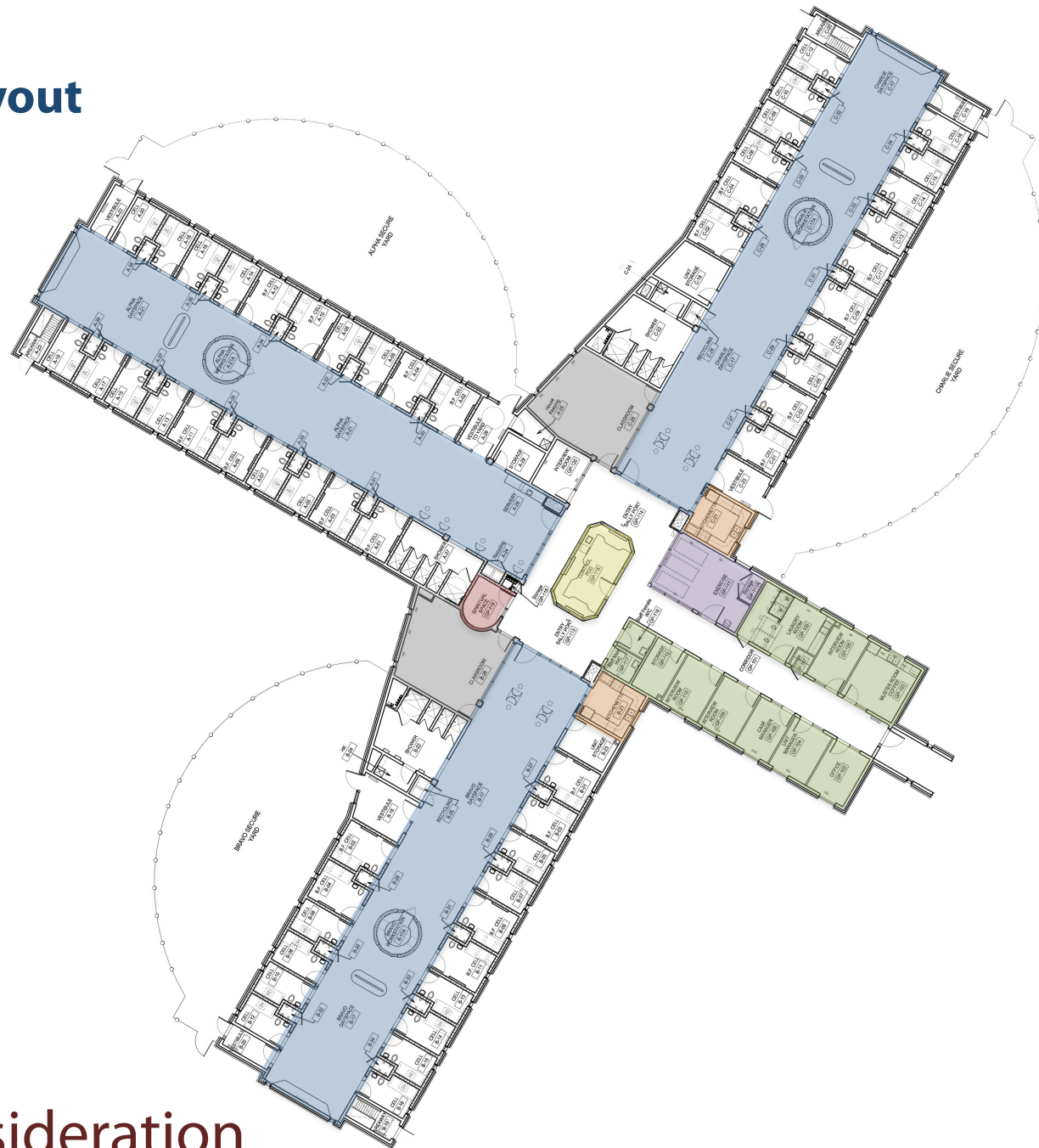
4 Building Layout

- *Scale – single storey*
- *Accessibility*
- *Designated Living Units*
- *Future Expansion*
- *Access to Natural Light*
- *Central Core Facilities*
- *Layering of space*



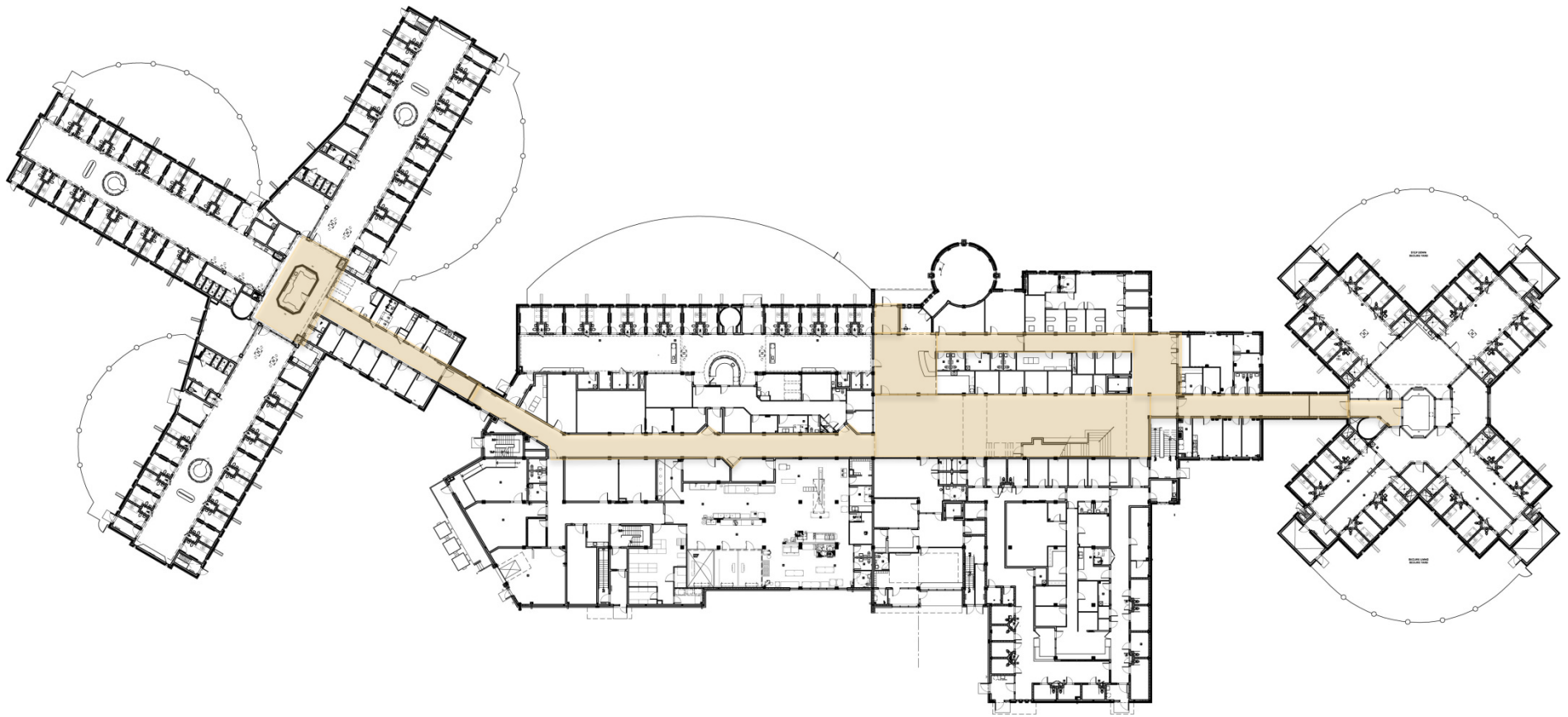
Points for Consideration

4 Building Layout



Points for Consideration

4 Building Layout



Points for Consideration

4 Appearance: Materials & Colours

Inside:

- *Wayfinding*

- floor patterning: defines spaces
- colour schemes

- *Elm wood*

- local, natural material
- feeling of warmth in an otherwise 'hard' environment
- defines spiritual space – wood provides a connectedness to nature

- *Millwork*

- durable materials – phenolic core plastic laminate; solid surface; door/drawer pulls that are not easily removed

- *Tectum panels*

- provide acoustic treatment
- atrium space – birch tree patterning serves as 'artwork'



Points for Consideration

4 Appearance: Materials & Colours

• *Natural Light*

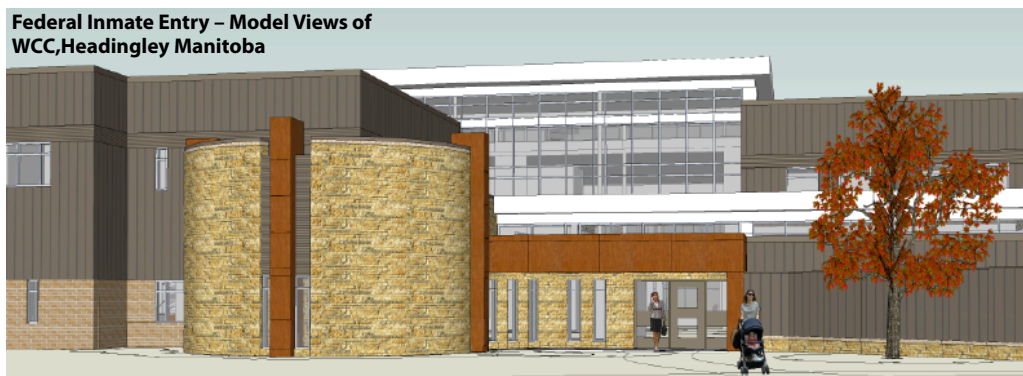
- critical to promoting sense of well-being in a confined environment
- imparts a sense of rhythm to the day and connectivity to the outside
- results of a study in Michigan proved that inmates who had their windows facing the prison yard were visiting the health centre more often than inmates who faced the forest and farming fields (Moore, 1981-82).



Points for Consideration

4 Appearance: Materials & Colours

Continuity of Materials from Inside to Out



Points for Consideration



5. Supervision Considerations

5 Supervision: Indirect, Direct, Dynamic

A. Indirect

- *Officers are in a central secure control station overlooking one or more dayrooms;*
- *Officers Control systems such as control doors and observe with CCTV cameras;*
- *Communication is through public address or intercom.*



Indirect Supervision Station in Secure Living Unit at WCC in Headingley, Manitoba

Points for Consideration

5 Supervision: Indirect, Direct, Dynamic

B. Direct

- *Places Correctional Officers face to face with inmates;*
- *No physical barriers;*
- *Officers maintain frequent interaction with inmates;*
- *Officers are better able to see and interpret inmate behavior, conversations and body language. This can anticipate issues before they become problems.*



Direct Supervision desk in Day Space of Special Needs at WCC in Headingley, Manitoba



Direct Supervision desk in Day Space of General Population at WCC in Headingley, Manitoba

Points for Consideration

5 Supervision: Indirect, Direct, Dynamic

C. Dynamic

- *Eliminates unnecessary barriers including control doors;*
- *Many activities occur without the direct presence of an officer;*
- *Generous amounts of glazing required as to permit both direct and casual supervision by staff.*
- *Inmates access program and living spaces unobstructed.*



Offenders are strolling within the facility unsupervised at Grand valley institute for Women in Kitchener, Ontario. [Photo Source](#): KPMB



Glazed Corridor at the Baylor Women's Correctional Institution (BWCI) in New Castle, Delaware

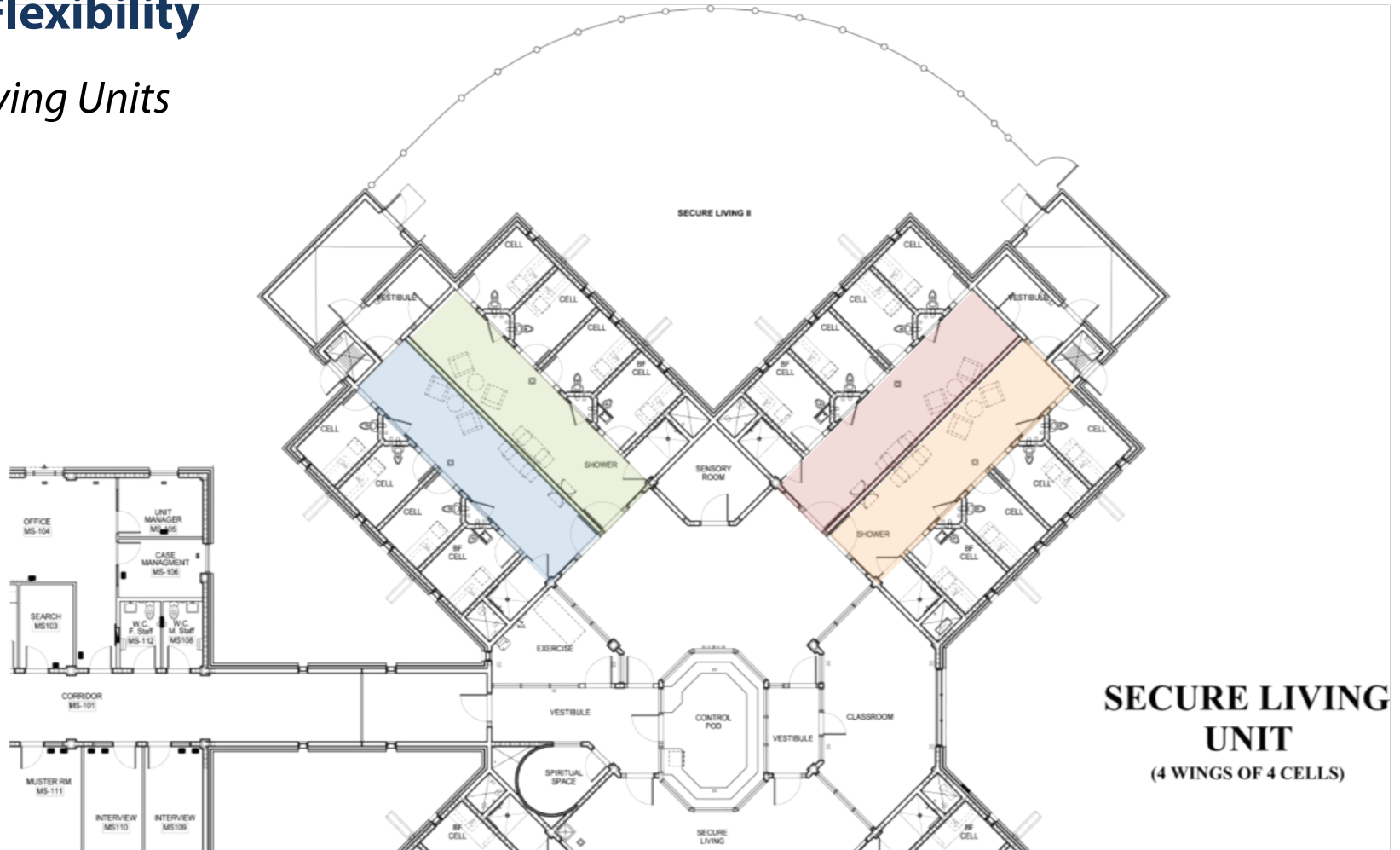
Points for Consideration



6. Flexibility Considerations

6 Flexibility

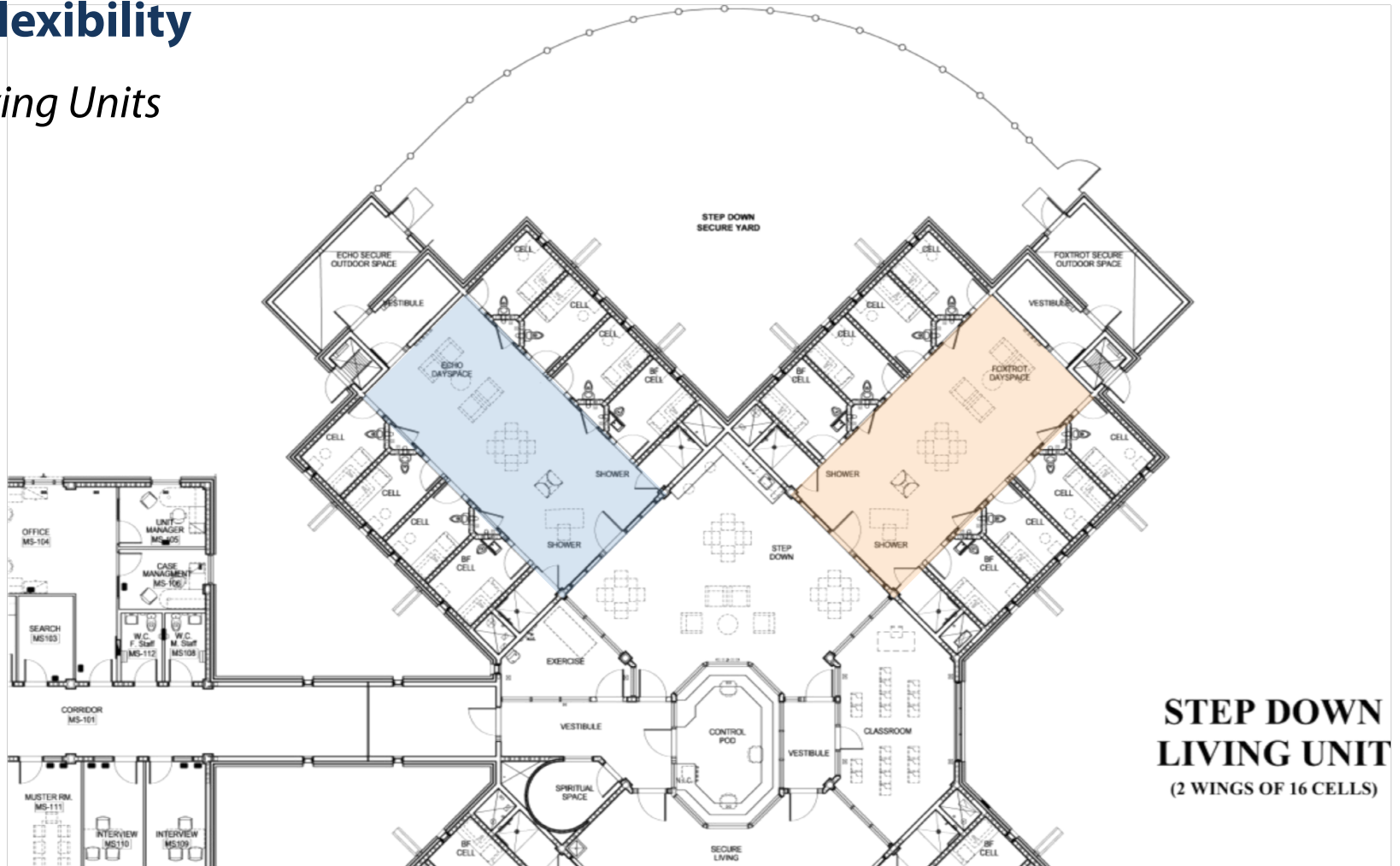
- *Living Units*



Points for Consideration

6 Flexibility

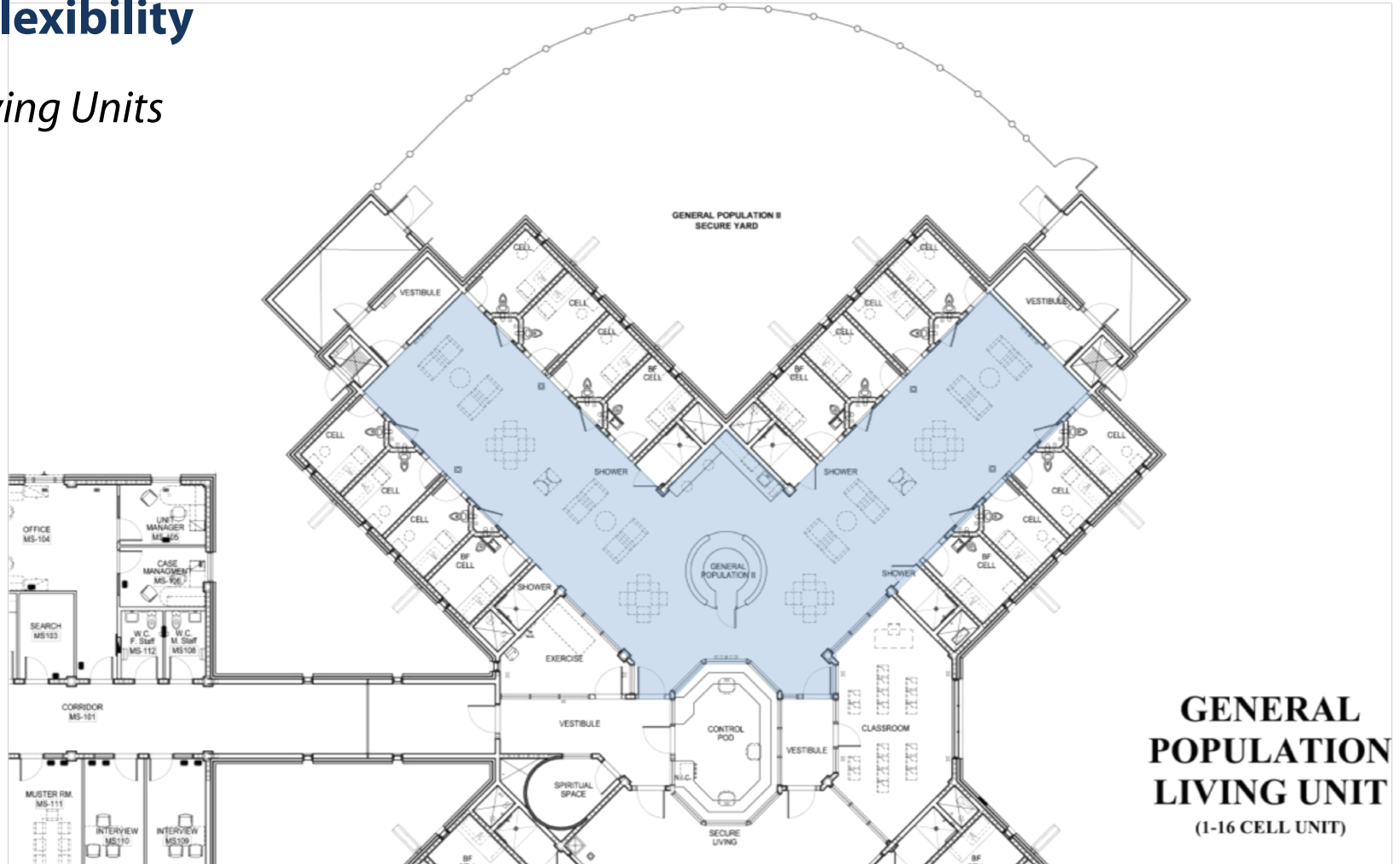
- *Living Units*



Points for Consideration

6 Flexibility

- *Living Units*

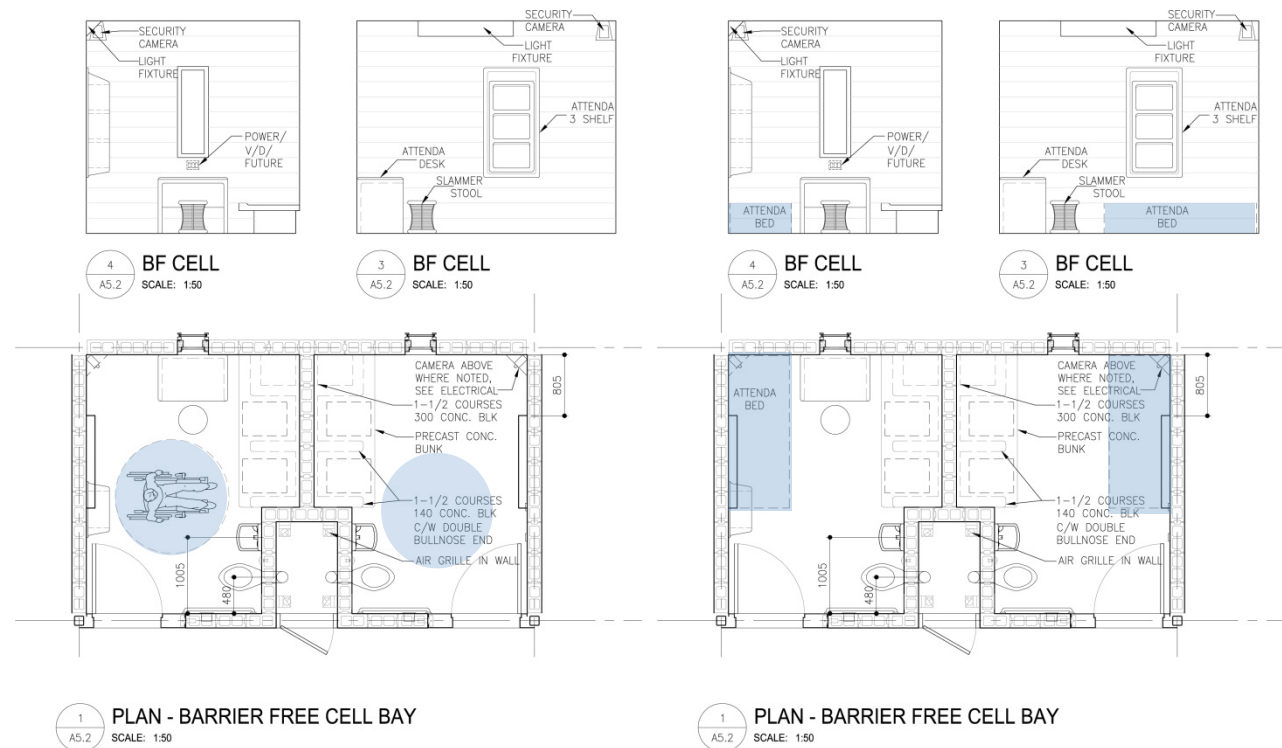


Points for Consideration

6 Flexibility

•Cells c/w Barrier Free

•Technology



Points for Consideration



7. Controllability Considerations

7 Controllability & Calm

By Inmates:

- *Vary controllability by classification*
- *Access to phone*
- *Time Markers:*
 - *Digital Clocks*
 - *Natural Light*
- *Adjacent yard/green space*
- *Operable vents or Windows*
- *Light Control*
- *Temperature Control*



Public Stair Tower at WCC in
Headingley, Manitoba

Points for Consideration

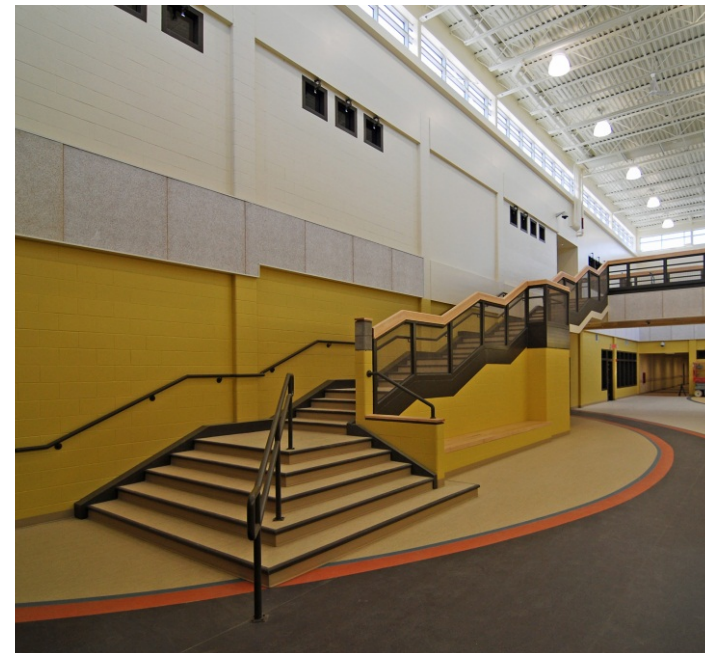
7 Controllability & Calm

By Correctional Personnel:

- *Sightlines:*
 - Blind Corners
 - Glazing
 - CCTV
 - Mirrors
- *Wide corridors, generous stairs & elevators*
- *Door Controls*
- *Scramble Pads*
- *Remote Cell Controls:*
 - Water,
 - Lights
 - Temperature
 - Intercoms



Direct Supervision Station in Special Needs Living Unit at WCC in Headingley, Manitoba



Main Stair in Atrium at WCC in Headingley, Manitoba

Points for Consideration

7 Controllability & Calm

By Facilities Management:

- *Avoid crossover with inmates as much as possible to limit the number of lockdowns and possibility of complaints:*
 - Full crawlspace or service mezzanines
 - Equipment in corridors and other public areas to limit disruption to programs



Service Crawlspace at WCC in
Headingley, Manitoba

Points for Consideration



8. Cell Design Considerations

8 Rooms, Cells & Dormitories

Wet Cells:

- *Conventional*



View of Double Occupancy Cell at WCC, Number Ten
Architectural Group

Points for Consideration

8 Rooms, Cells & Dormitories

Wet Cells:

- *Semi-Private*



View of Cell with Semi-Private washroom in the New Mount Eden Corrections Facility, Auckland New Zealand

Points for Consideration

8 Rooms, Cells & Dormitories

Rooms or Dry Cells:



Double Occupancy Room at MCF Shakopee, Klein McCarthy Architects.

Points for Consideration

8 Rooms, Cells & Dormitories

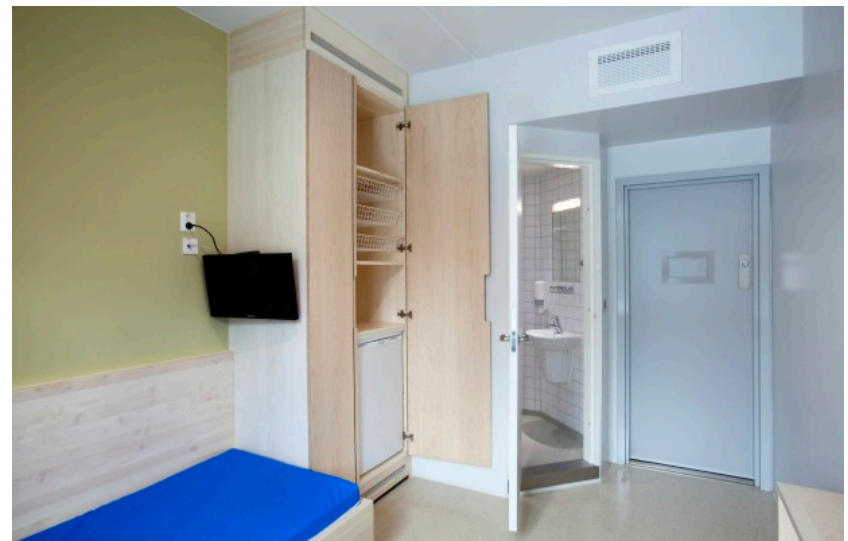
En-suites:



View of Private Cell at Norway's Halden Prison by Architect
Hans Henrik Hoiland



View of compact Washroom in-cell washroom c/w shower



View to TV, Fridge and Private Washroom

Points for Consideration


8 Rooms, Cells & Dormitories

Dormitories:



View of Dormitory at the San Mateo Girl's Camp, County of San Mateo, Redwood City, California.
Photo Source: Justice Facilities Review 2007.

Points for Consideration



9. Social Considerations

An Architectural Viewpoint on Female Incarceration

9 Social Considerations

- *Benches and other places for quiet contemplation*
- *Kitchen on unit*
- *Telephone nooks*



Circulation Space at Grand Valley Institute For Women
Photo Credit: Steven Evans



Two images of Offender Green Space at the Minnesota Correctional Facility (MCF) Shakopee, Shakopee, MN.



Dinning Room at the Baylor Women's Correctional Institution (BWCI) in New Castle, Delaware



Dinning Room at the Minnesota Correctional Facility (MCF) Shakopee, Shakopee, MN.

Points for Consideration



10. Beyond the Walls

An Architectural Viewpoint on Female Incarceration

10 Beyond the Walls



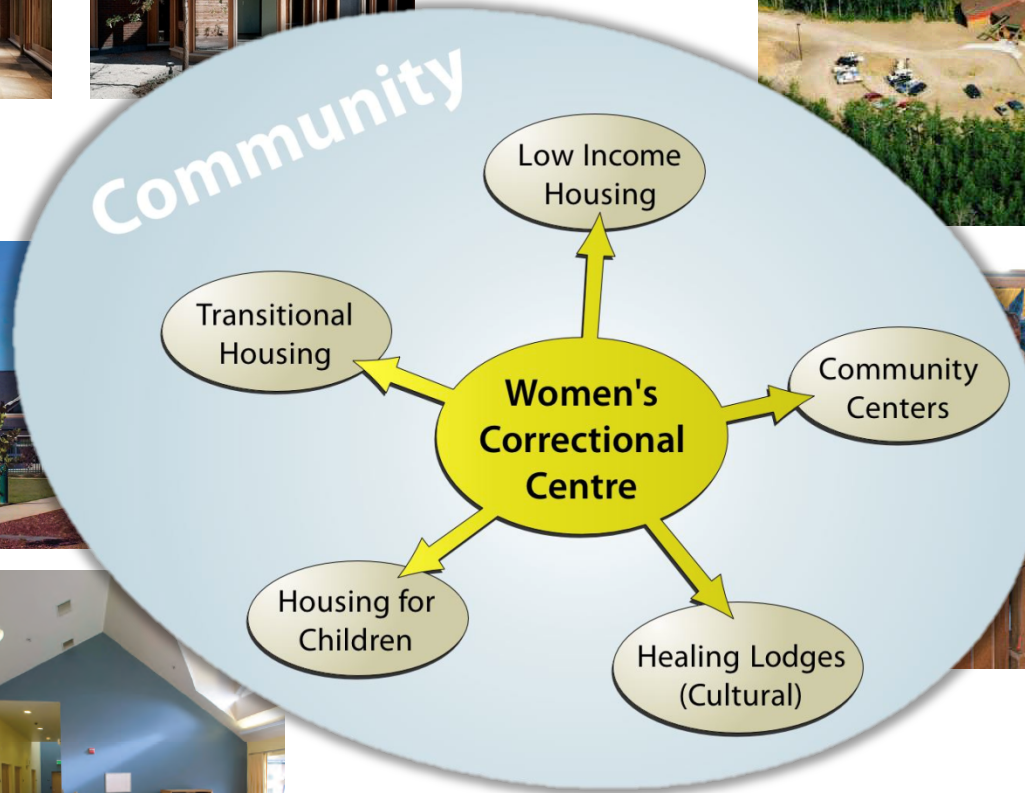
Robertson House Crisis Care Centre, in Toronto, Ontario by Hariri Pontarini Architects
Photo Source: Haririponterini.com




Valley of the Moon Children's Home, Santa Rosa, California by Patrick Sullivan Associates
Photo Source: Justice Facilities Review 2007



The Okimaw Ohci Healing Lodge in Saskatchewan
Photo Source: International Profile of Women's Prisons, International Centre for Prison Studies, King's College London, The University of London, London, UK, April 2008.



Points for Consideration



Thank you
Any Questions?