

Justice Facilities Review



**AIA Knowledge
Community**

Academy of Architecture
for Justice

Justice Facilities Review



AIA Knowledge
Community

Academy of Architecture
for Justice

JEFRIT

Copyright 2017 The American Institute of Architects
All rights reserved
Printed in the United States of America

The project information in this book has been provided by the architecture firms represented in the book. The American Institute of Architects (AIA) has no reason to believe the information is not accurate, but the AIA does not warrant, and assumes no liability for, the accuracy or completeness of the information. It is the responsibility of users to verify the information with the appropriate architecture firm or other sources.

The American Institute of Architects
1735 New York Avenue, NW
Washington, D.C. 20006

2017 Academy of Architecture for Justice Leadership Group
Erin Persky, Assoc. AIA, Chair
Amy Finlayson, RA
Greg Cook, AIA
Melissa Farling, FAIA
Lorenzo Lopez, AIA, past chair

AIA Staff
Terri Stewart, CAE, senior vice president, Knowledge and Practice
Douglas Pau, senior director, Knowledge Communities and Resources
Kathleen Simpson, CAE, director, Knowledge Communities
Elizabeth S. Wolverton, senior manager, Honors and Awards
Emma Tucker, specialist, Knowledge Communities

Design: Steve Kulaga
Editor: Lorenzo Lopez, AIA / Janet Rumbarger

Cover photo: City of San Francisco Public Safety Campus Hellmuth, Obata + Kassabaum Inc. & Mark Cavagnero Associates of San Francisco, CA / SF Department of Public Works Bureau of Design and Construction (photo ©Tim Griffith Photography)

Contents

04-07

Jury Members

10-31

Citations

San Francisco Public Safety Campus
LAPD Metropolitan Division Facility
Okanagan Correctional Centre
Thunder Bay Consolidated Courthouse
University of Washington Police Department

44-45

Index of Architects

08-09

Jury Comments

32-43

Published

Dallas County Jail
Medical Mental Health Modifications
Senator Daniel K. Inouye Defense POW/MIA
Accounting Agency Center of Excellence
Montgomery County Circuit Court
North Butte County Courthouse
San Mateo County Maple Street Correctional Center

Jury Members

Jury Chair



Michael E. LeBoeuf, FAIA

Design Director
Little, Orlando, FL

Michael LeBoeuf is the Design Director for the Little Orlando office and has practiced for more than 35 years, with the majority of his career focused on the design of large urban government buildings in the United States, projects that represent substantial investments by our society to create buildings that define the urban core of our cities. Some of his signature projects include the New Castle County (DE) Courthouse, the Pueblo County (CO) Courthouse, US Jacksonville (FL) Courthouse, the Orange County (FL) Courthouse Complex in his home city of Orlando and design excellence projects for both the US General Services Administration and Administration of the Court (CA).

Michael's work has contributed to the evolution of the modern courthouse through design that has enhanced building efficiency and transformed courtroom design and court operations through design excellence. He has served as the lead designer on 40 courthouses compiled to be over 600 courtrooms and over 8,000,000 square feet of courthouse facilities around the United States. In 2010 this effort was rewarded by both his elevation to a Fellow in the AIA and with his selection to the US General Services Administration's National Registration of Peer Professionals. To date his design work has received 60 awards for design excellence.



David Clusiau, OAA, AIBC, FRAIC, Assoc. AIA, LEED AP

Vice President Architectural Design Principal
NORR Limited Architects & Engineers, Toronto

As Vice President Architectural Design Principal at NORR Limited Architects & Engineers in Toronto, David Clusiau oversees the majority of the firm's architectural and interior design activities. David is actively engaged in the Justice sector, regularly providing presentations to the AIA Justice Facilities Conferences on his projects, and is the founding chair of the Canadian Academy for the Architecture of Justice.

His judicial experience includes the Waterloo County Courthouse, the Elgin County Courthouse, the Pierre Elliott Trudeau Federal Judicial Building, the John Sopinka Courthouse, the Calgary Courts Centre, Renfrew County Courthouse, and the Collins Bay Institution Redevelopment, as well as the Peace Bridge Border Crossing at Buffalo –Fort Erie and the Blue Water Border Crossing facility at Point Edward. All of these projects have been selected for citations, awards of merit or publication by past AIA JFR juries.



Alfred Degrafinreid II

Chief Deputy Clerk
Metropolitan Nashville Government, Nashville, TN

Alfred Degrafinreid serves the Metropolitan Nashville Government in the capacity of Chief Deputy Clerk in the Criminal Court Clerk's Office. His office is responsible for performing clerical duties for the operation of eleven General Session and six State Trial Criminal Courts. He attained the Bachelor of Science and Master of Public Administration degrees from Tennessee State University, and the Doctor of Jurisprudence degree from Indiana University Robert H. McKinney Law School.

Mr. Degrafinreid began his career in court management when appointed as Chief Administrative Officer by the Criminal Court Clerk in 2014. Prior to this appointment, he served as Legal Counsel for U.S. Representative Jim Cooper, and has worked in local, state, and federal government having vast legislative experience. He has been a member of the National Association for Court Management since January 2015. He serves on NACM's Membership Committee as the Chair of the Early Career Professionals (ECP) Committee and as Vice Chair of the Core Committee.



Thomas Hoepf, FAIA, LEED AP

Vice President and Principal Design Architect
exp, Chicago, IL

Thomas Hoepf, FAIA is Vice President and Principal Design Architect at exp. His work includes a broad range of project types in new construction and complex renovations for public and private sector clients, including the General Services Administration, the Federal Aviation Administration, the Chicago Transit Authority, American Airlines, BP and the University of Illinois.

Tom's projects have won numerous International, National, State and Local Design Excellence Awards. He received the AIA Chicago Young Architect Award, and under his design leadership, exp also received the AIA Chicago Firm of the Year Award. In 2006 Tom was elected to the AIA College of Fellows and in 2008 he was appointed by the General Services Administration to the National Register of Peer Professionals to serve as a Design Peer for projects administered in the Design Excellence program.

Tom has served on the Board of Directors of AIA Chicago and the Chicago Architectural Club, and has Chaired the AIA Chicago Design Knowledge Community. He has served on design award juries for various AIA State and City Chapters. As Adjunct Professor Tom has taught Graduate Design Studio at the Illinois Institute of Technology since 2008.

Jury Members



Daniel Redstone, FAIA, NCARB, LEED AP

Principal
Redstone Architects, Bloomfield Hills, MI

For the past 30 years Mr. Redstone has led the programming and design efforts for numerous law enforcement, justice and public safety agencies throughout the country, either as the architect of record or as a public safety consultant to other architects. Daniel’s work with law enforcement agencies, command staffs, and architects across the nation has given him valuable insight on the spectrum, variety and new trends of police services. Daniel keeps himself aware of current trends in community policing and law-enforcement technology through his regular attendance at the annual IACP conferences, and at AAJ conferences.

Mr. Redstone acts as a catalyst in defining project issues, which results in the development of quality space facility programs that incorporate the long-term needs of the client agency, and which form a strong foundation for a successful outcome.

Mr. Redstone is a graduate of the University of Michigan – Taubman College of Architecture, and the University of Michigan – Ross School of Business. Daniel served on the Michigan Board of Architects for 18 years, has been on numerous NCARB committees, and has chaired a number of NAAB Accreditation Teams.



Kathy Schley

Inspector
Battle Creek Police Department, Battle Creek, MI

Inspector Kathy Schley received her Bachelor of Science degree in Criminal Justice from Ferris State University and a Masters of Public Administration from Western Michigan University.

Inspector Schley has been a valued member of the Battle Creek Police Department for over 25 years. During her tenure with the BCPD, Kathy has also worked as an undercover officer in the Special Investigations Unit, K-9 officer, Administrative Aide/Grant Writer, Detective/Grant Writer and Executive Officer. On May 12, 2014, Kathy was promoted to her current rank as Inspector. Kathy’s current area of responsibility is special projects, which included being the project manager for the new \$15.5 million Battle Creek Police Headquarters.

In addition to her current duties, Kathy is the LEIN TAC representative and serves on many committees, such as the Substance Abuse Council, the Elder Abuse Coalition, the City Communication Team, the new Facility City Team and the Byrne Steering Committee.

Kathy has received seven Unit Citations, one Professional Excellence Citation, and numerous letters and cards of commendation from other agencies, businesses and citizens. She was also named Officer of the Month in March of 2014.



Rona Rothenberg, FAIA

Capital Program Manager
County of Alameda, Oakland, CA

Rona G. Rothenberg, FAIA has worked in institutional program and project management “from the inside out,” within institutions as the owners’ architect in government and industry for the past 30 of her 44 years in professional service. In her substantial professional career, Rona has been involved in master planning, design and construction delivery of over 100 institutional projects in multiple programs and she lectures and writes widely on this subject.

She has served in program and project management for Stanford, Kaiser, and AllianzAG/Fireman’s Fund North American Corporate Real Estate. For the past 16 years, she has been a program leader in government for major capital infrastructure programs, including 13 years as the senior manager and founding team member of the historic \$6 billion California State Court building program including 27 courthouse projects now completed statewide. Rona has continued in public service as Capital Program Manager for the County of Alameda, responsible for a \$600 million capital program representing diverse projects in

the County’s 200 facilities including health care, corrections, County administrative, library, community center, fire station, a county wide accessibility transition plan, a county-wide disaster mitigation plan and related work, recent completion of the \$155 million East County Hall of Justice, a collaborative project of the County-State-Court, and Camp Sweeney, a \$60 million restorative juvenile probation project funded by the County and the State and over \$125 million of master planned improvements to the 1M sf Santa Rita Jail.

Rona has a passion to give back to the profession through AIA National, State and Local board and committee leadership in justice and community based projects. She is currently on the AIACC Board representing AIA-SF, is a regional representative of the College of Fellows for California and has been appointed to a committee of the California Architects Board. Rona is a long-time Bay Area resident, has been married for 38 years to a U.S. Navy Vietnam-era veteran and is the proud mother of two grown children.

Jury Comments

The view from the chair

Welcome to the 2017 edition of the Justice Facilities Review, the annual publication from the American Institute of the Architects, Academy of Architecture for Justice celebrating excellence in the design of justice projects. This year recognizes the best in architectural design for courts, law enforcement, corrections and related facilities.

The 2017 awards review process began with 22 submissions. There was an equal balance of courthouse, law enforcement and corrections facilities with 7 each and 1 related facility. These submissions were forwarded to each of the six jury members for an initial review prior to our spring meeting as a panel at the AIA headquarters in Washington DC. The initial review by each juror also included an individual ranking. Once we convened in DC the jury then reviewed each submission and the individual jury rankings as a group in the morning session and an initial shortlist was developed. In the afternoon session the shortlist was further refined and the finalists selected. The jury discussed the relative strengths and weaknesses of each project. It was important to the jury to evaluate each project individually based on its program, mission goals, functional efficiency, context, and the design solution presented. In addition, some of the important questions asked by the jury in the conversations were:

- Does this project further the evolution of the building type?
- Does the project solution push beyond simply satisfying the program?
- Does the project make a significant contribution to the community and the public context?

- Does the project improve the experience of its occupants, staff, visitors and users?

Interestingly, the five citation projects surfaced with nearly unanimous support while the five published projects generated the liveliest conversation and debate. I invite you to review in detail the selected five citation projects and the five published projects illustrated on the following pages. Each of the projects and their respective stories are well documented and represent our Justice industry's design excellence for 2017.

The invited members of the jury represented a wide range of diverse geographic locations and genders, and included three pairs of experts specializing in each project type, i.e., courts, law enforcement and corrections. Jury members represented both the architectural community and industry clients. I would like to give a special thanks to our 2017 jury members: David Clusiau, OAA, AIBC, FRAIC, Assoc. AIA, LEED AP; Alfred Degrafinreid II; Thomas Hoepf, FAIA, LEED AP; Daniel Redstone, FAIA, NCARB, LEED AP; Kathy Schley; and Rona Rothenberg, FAIA; for their time, passion and dedication to the selection of the 10 featured projects.



Michael LeBoeuf, FAIA
2017 Jury Chair

“
I invite you to review
in detail the selected
five citation projects
and the five published
projects illustrated on
the following pages.
”



CITATIONS

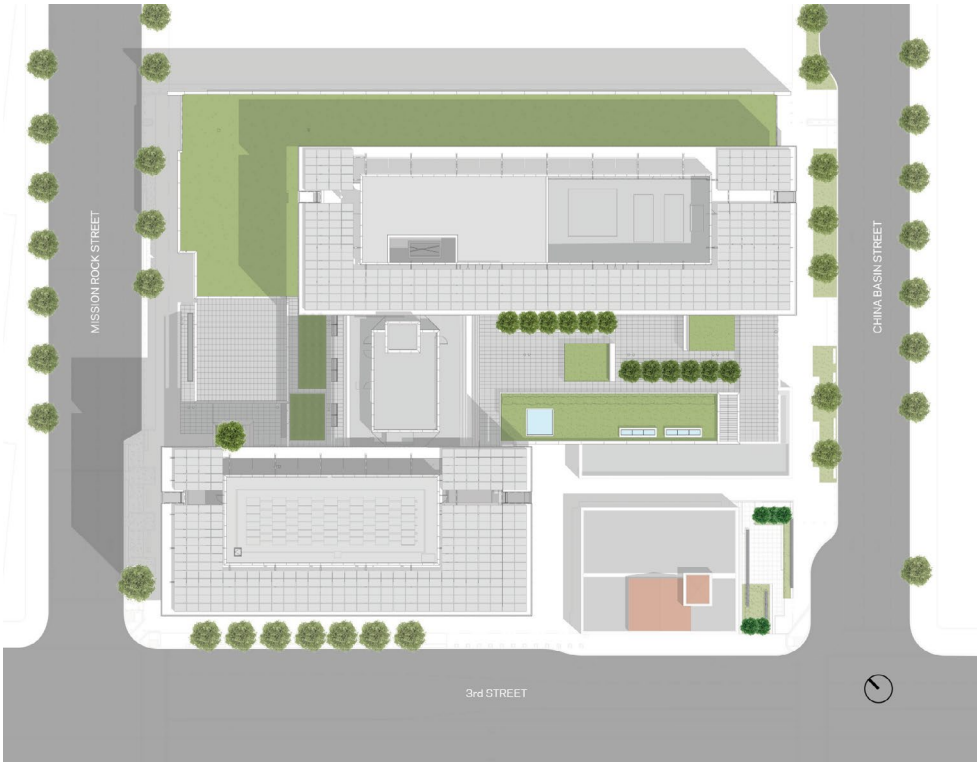
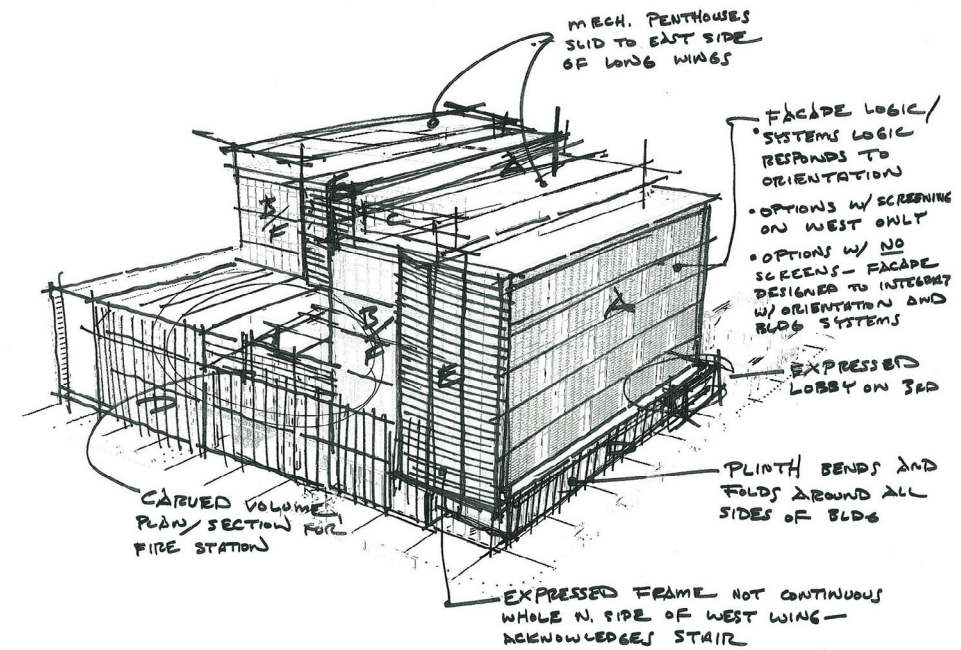
-
- San Francisco Public Safety Campus
 - LAPD Metropolitan Division Facility
 - Okanagan Correctional Centre
 - Thunder Bay Consolidated Courthouse
 - University of Washington Police Department

San Francisco Public Safety Campus

San Francisco,
California

Jury's Statement

This is a strong civic landmark with clear and restrained exterior massing and planning. Considering that the new building is much larger, the design is surprisingly sensitive to the existing fire station in scale. Its use of solar shading devices is well integrated into the overall design.

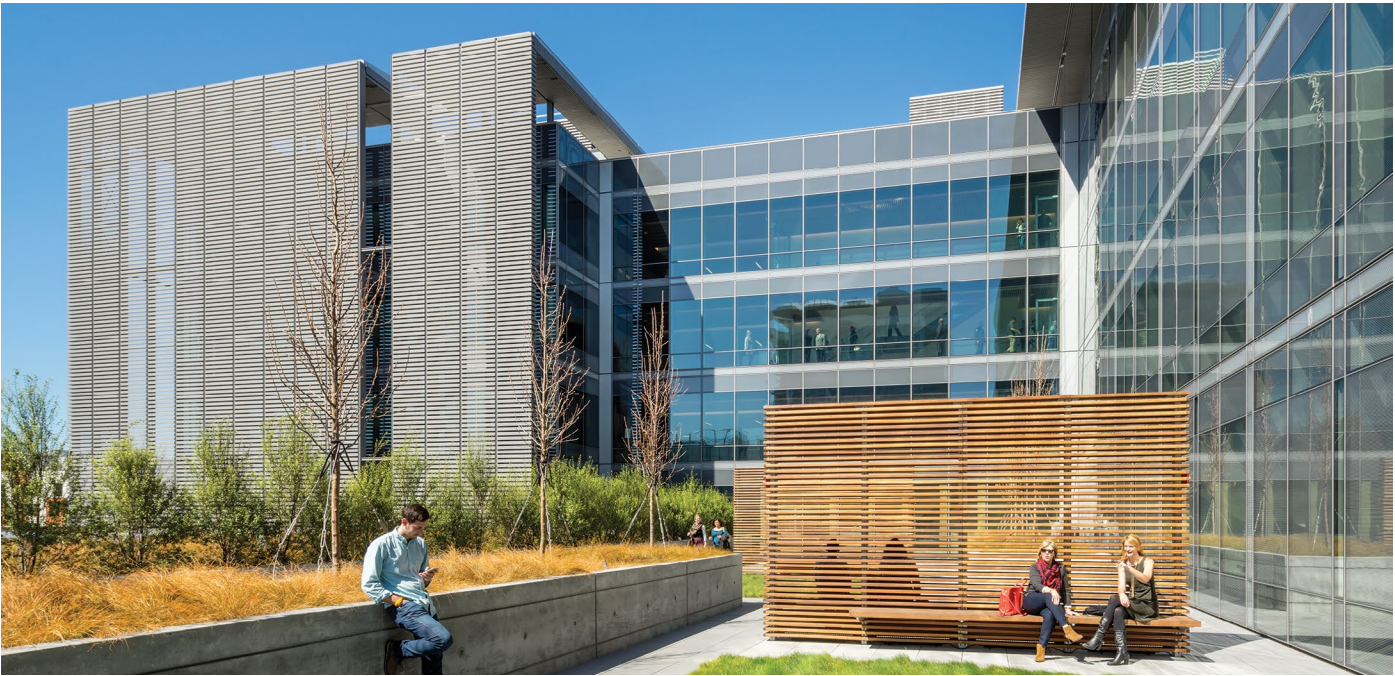


Architect’s Statement

Located in the city's emerging Mission Bay district, the 307,000-square-foot San Francisco Public Safety Campus represents a significant investment in a prominent public facility. State-of-the-art engineering and a landmark scale unite in a highly resilient structure that consolidates critical civic services under one roof: the city's police headquarters, a relocated district police station, and a local fire station. The complex also incorporates an historic fire station renovated for community use.

Project stakeholders established five overarching goals to guide decision-making for the project: responsible use of public funds, a quality and durable work environment, safety and security for occupants and the public, a sustainably focused building that exemplifies the city's commitment to environmentally responsible development, and a beautiful civic building that is responsive yet distinct from surrounding development. Certified LEED Gold, the project is designed to thoughtfully engage the site to align user needs and efficient environmental performance.

A concrete plinth establishes a secure base for the towers, which are enclosed with a variegated, high-performance glass curtain wall. Two 63-foot-wide bars connect via a transparent east-west oriented core to form an offset H-configuration that tempers the tower's perceived massing from the street and facilitates the penetration of daylight and views into the building's interior. A delicate louvered metal scrim, floating apart from the structure, wraps the towers from north to south, minimizing unwanted glare and heat gain while providing an overarching unifying identity for the development.



Owner

The City and County of San Francisco

Data

Type of Facility: Multiuse/Other

Type of Construction: New

Site Area: 66,000 SF

Building Area: 307,620 SF

Construction Cost: \$192 million

Project Delivery Type: CM at Risk

Funding: City

Status of Project: Completed

Capacity: 528 staff

Credits

Design Architect: Hellmuth, Obata + Kassabaum

Architect of Record: Mark Cavagnero Associates

MEP, Façade and Code Consultant: Arup

Mechanical, Plumbing, Fire Protection: SJ Engineers

Electrical, Fire Alarm: Ajmani & Pamidi, Inc.

Structural Engineer: SOHA Engineers

Preliminary Programming: McClaren, Wilson & Lawrie

Tel/Data/AV, Acoustic, Security Electronics: Smith, Fause & McDonald

Civil Engineer: Telamon Engineering Consultants, Inc.

Cost Estimating: M Lee Corporation

Cost Estimating: Davis Langdon (now AECOM)

Vertical Transportation: Syska Hennessy

Landscape Architecture: Cliff Lowe Associates

Lighting Design: JS Nolan + Associates

LEED Consulting: Simon & Associates, Inc. (now Thornton Tomasetti)

Waterproofing: Simpson Gumpertz & Heger

Environmental Graphics: Madeleine Corson Design

Integrated Building Automation Systems: Smart Buildings

Exterior Maintenance: C. S. Caulkins

Hardware: Door Hardware Consultants

Radio, Communications: CDX Wireless

Geotechnical Engineer: Geotechnical Consultants, Inc.

Commissioning: Enernoc

Threat Mitigation: Hinman Consulting Engineers, Inc.

Threat Assessment: Kroll

General Contractor: Charles Pankow Builders

Construction Management Support Services: Vanir Construction Management, Inc.

Curtainwall Contractor: Permasteelisa North America

Artists: Entry Lobby, Shimon Attie South Plaza, Paul Koss

Photographer: Tim Griffith Photography

LAPD Metropolitan Division Facility

Los Angeles, California

Jury's Statement

This is an excellent reuse of a 1960s building, one that resulted in a strong design with community engagement and sensitive integration of new security measures. It features well-developed interior spaces that are daylit and have strong connections to the new exterior courtyard.

Site Plan

- | | | |
|-----------------|----------------------|-------------------------|
| 1 Public Entry | 5 Staff Patio | 9 Skylight |
| 2 Pocket Park | 6 Staff Parking Deck | 10 Secure Vehicle Entry |
| 3 Staff Garden | 7 Photovoltaic Array | 11 Staff Parking |
| 4 Staff Terrace | 8 Light Monitor | 12 Bioretention Swale |



Metropolitan Division project celebrates a new era in sustainable civic design and sensitive law enforcement/ community relations.

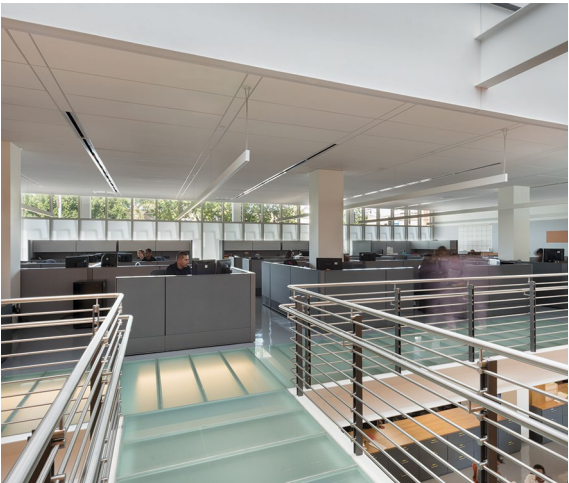


Architect’s Statement

This project transforms and reimagines the former LAPD Rampart Division Station as a good neighbor in the community and a proud new home for the elite LAPD Metropolitan Division (“Metro”). This former walled-off bunker has been recreated as a 24/7 state-of-the-art specialty police facility, efficiently housing one administrative platoon and five field platoons. The urban site occupies a sloping corner lot in a high-density residential community with some commercial neighbors and a 16'-0" onsite grade transition.

Originally developed in 1966 as a community police station, the site houses an existing two-story concrete building with attached single-level parking deck. This project’s design focused on leveraging simple design strategies in new ways in order to achieve multi-scaled, multi-use benefits, thus achieving LEED Platinum certification within a cost budgeted to achieve LEED Silver. This tactical transformation of a bunker-like facility with a heavy legacy combined tried-and-true design moves such as indoor/outdoor spaces, diffused natural light, pocket park landscaping, sheltered parking, and strategic HVAC zoning in order to maximize aesthetic and functional impact. The holistic design result creates a twenty-first century public safety facility that balances historical recognition with an aspirational future.

The design process began by focusing on comprehensive programming and alternative concepts in order to best accommodate multiple departments scattered throughout different facilities onto a single tight site that housed a fixed concrete shear wall building. An emphasis on identifying potential spatial redundancies, unnecessary minimums, and outdoor opportunities utilized user focus groups, site observations, intense personnel shadowing, and a post-occupancy evaluation completed with the previous building users upon their movement to a new facility.



A new entry sequence along Temple Street works in conjunction with a complete façade replacement to allow the building to glow as a beacon of neighborhood safety.



Owner

City of Los Angeles Bureau of Engineering

Data

Type of Facility:
Law Enforcement

Type of Construction:
Renovation

Site Area:
75,794 SF

Building Area GSF New:
144 SF pump room

GSF Renovated:
25,175 GSF building

Construction Cost:
\$16,275,538

Project Delivery Type:
Design-Bid-Build

Funding:
Public bond issue and other

-

Status of Project:
Completed 2016

Capacity:
Occupancy: 560
(482 current staff population)

Credits

Design Architect:
Perkins+Will

Programming:
Perkins+Will

Structural Engineer:
John A. Martin & Associates

MEP/FP Engineer:
dHA + CALPEC

Civil Engineer:
JMC² Civil Engineering +
Surveying

-

Landscape Architect:
Cornerstone Studios

Security:
Guidepost Solutions

Waterproofing:
D7 Consulting Inc.

Acoustical:
Newson Brown Acoustics, LLC

Photovoltaic:
Sustineo Corporation

Public Artist:
Ken Gonzales-Day

Contractor:
Sinanian Development, Inc.

Photographer:
James Steinkamp
Steinkamp Photography

Okanagan Correctional Centre

Oliver, British Columbia,
Canada

Jury's Statement

This is a very powerful and clear exterior design with simple materials. The strong interior spaces throughout the facility create a sense of continuity. An excellent example of a public-private partnership project.



The Main Entrance is familiar and inviting, while respecting culture.



Architect’s Statement

The Okanagan Correctional Centre was designed on the premise that the physical environment plays a profound role in encouraging personal and societal change, moderating behaviors and promoting wellness. Its mandate is to make a difference in the lives of those that it serves, in many significant ways. This facility is the continuation of British Columbia Corrections' mandate to re-develop their facilities. Their objective, which began 20 years ago, was to create a new model for the delivery of corrections services, providing a safer, more supportive environment to achieve better outcomes.

Completed in the fall of 2016 under a public-private partnership agreement, the Okanagan Correctional Centre embodies some of the most progressive approaches to correctional facility design. It is more sustainable, less costly to build and maintain, more operationally efficient, and has lower staffing requirements. More importantly, it creates a therapeutic environment for residents, encouraging them to develop the attitudes necessary for reintegration into society. This is achieved by creating a safe, respectful, and dignified environment for all occupants, and by encouraging closer, more collegial relations between residents and staff.

It is a multi-level building, accommodating a wide range of populations: sentenced and remand, male and female, open custody to maximum security with a range of criminal histories, conditions and incompatibilities. At 861 beds and a construction cost of \$102.7 million, it is the largest facility in the province and the most technologically advanced. It is also one of the most environmentally responsible corrections facilities in North America, designed to merge into its setting and serve as a catalyst for business development within the community.



Inmate Cells are designed as places of calm and relaxation.



Living Units are open and airy, providing a sense of safety and comfort.



A public presence that is unthreatening; demonstrating a positive purpose and welcome approach.



Staff Lounge and other staff facilities promote wellness and collegial interaction.

Owner

Province of
British Columbia

Data

Type of Facility:
Corrections/Detention

Type of Construction:
New

Site Area:
1,568,160 SF

Building Area:
320,781 SF

Construction Cost:
CA \$141,425,000
US \$106,068,750

Project Delivery Type:
Public-Private Partnership

Funding:
Private Financing

Status of Project:
Fully Operational

Credits

Design Architect:
DGBK Architects

Bridging Architect:
IBI Group

Corrections Advisor:
Jug Island Consulting

Structural Engineer:
Bush Bohlman & Partners

Mechanical Engineer:
MMM Group

Fire Protection Engineer:
The Gisborne Group

Civil Engineer:
MMM Group

Landscape Architect:
Connect Landscape Architecture

Electrical / Security Engineer:
MMM Group

Fire & Life Safety Consultant:
GHL Consultants

Building Envelope Consultant:
Morrison Hershfield

Geotechnical Consultant:
GeoPacific Consultants

Food Services Consultant:
Lisa Bell & Associates

Interior Designer:
DGBK Architects

Acoustic Consultant:
BAP Acoustics

Risk Advisor:
Keel-Row Consulting

Private Partner:
Plenary Justice

Contractor:
PCL Constructors Westcoast

Service Provider:
Honeywell Canada

Photographer:
Latreille Architectural Photography

Thunder Bay Consolidated Courthouse

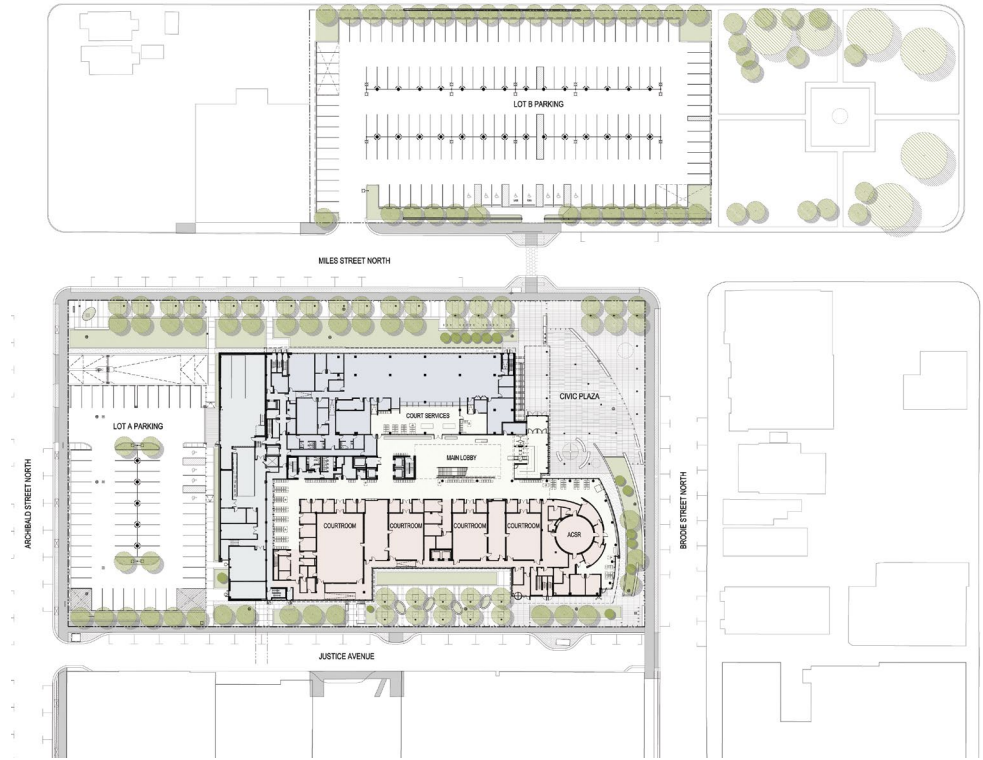
Thunder Bay, Ontario,
Canada

Jury's Statement

This is a great design solution with strong planning. It has well-developed exterior, and elegant interior, spaces. It also makes good use of daylighting in the courtrooms.



Exterior view of east elevation



Architect’s Statement

The project consolidates Thunder Bay's Superior and Provincial Courts into one contemporary six-story, 250,000-square-foot building. Located in Thunder Bay's downtown core, the new courthouse improves access to justice in the area by combining the services of the existing courthouses within one facility, in-creasing the number of courtrooms available, improving accessi-bility, health and safety, and security standards. The Thunder Bay Consolidated Courthouse accommodates 19 adjudication rooms, including 15 courtrooms and four conference/settlement suites.

Aboriginal input was crucial to the design from the project's earliest stages. Elders and leaders of various native communi-ties were consulted to solicit their ideas for the courthouse in the context of their traditions. The result is a unique civic project that reflects and accommodates Aboriginal culture. Included among the adjudication spaces is Ontario's first Aboriginal Conference Settlement Suite, designed to give a stronger voice in the justice process to First Nations, Inuit and Métis people. The suite is a culturally and architecturally relevant space, where Aboriginal traditions are acknowledged and understood and where court matters such as case conferences, pre-trials, and family and civil hearings can be adjudicated in a way that supports the healing process.

Located on the ground floor of the courthouse, the suite is circular in design and features a stone hearth at its centre, which will be used for smudging ceremonies before the start of proceedings. The suite was designed in consultation with ministry policy advisers, court representatives, and members of Aboriginal communities.

In a nod to the significant role the courthouse traditionally played in the civic and social realm, this space will also be used for community functions. The result is a thoroughly modern building that looks to the past in its embodiment of the perma-nence, grandeur, and civic authority of the Courthouse, while hearkening to the future with an innovative and sustainable design that furthers the delivery of justice in Ontario.



(above) Aboriginal Conference Settlement Room, designed in consultation with members of Aboriginal communities



Multiple Accused High Security (MAHS) Courtroom



Exterior view of north elevation



Owner

Infrastructure Ontario /
Ministry of Attorney General

Data

Type of Facility:
Courts

Type of Construction:
New

Site Area:
135,000 GSF
(courthouse site)

Building Area:
250,000 GSF

Construction Cost:
\$125,000,000

Project Delivery Type:
Other

Status of Project:
Completed 2014

Capacity:
15 Courtrooms

Credits

Design Architect:
Adamson Associates Architects

Consortium Lead/Equity:
Plenary Group

Facility Management:
Johnson Controls

Contractor:
Bird Construction

Mechanical Engineer:
Modern Niagara

Electrical Contractor:
Univex Canada Ltd.

Structural:
Read Jones Christoffersen

Mechanical:
Vanderwesten Rutherford
Mantecon

Electrical/Lighting:
HH Angus and Associates Ltd.

Specialty Court Design:
Ricci Greene Associates

Civil:
Engineering Northwest Ltd

Landscape:
Baker Turner Inc.

Cultural Heritage Consultant:
Archaeological Services Inc.

ISS and IT Systems:
Lobo Consulting Services

Audio Visual Systems:
Sight N Sound Design Inc.

Acoustic Consultant:
Aercoustics Engineering Ltd.

FF&E:
Figure 3

Blast Consultant:
Weidlinger Associates Inc.

LEED Consultant:
Morrison Hershfield

Building Code / Life Safety:
Larden Muniak Consulting Inc.

Accessibility:
Designable Environments Inc.

Signage and Wayfinding
Consultant:
Cygnus Group

Envelope Consultant:
Halcrow Yolles

Hardware Consultant:
Upper Canada Specialty
Hardware Ltd.

Photographer:
Studio Shai Gil

University of Washington Police Department

Seattle,
Washington

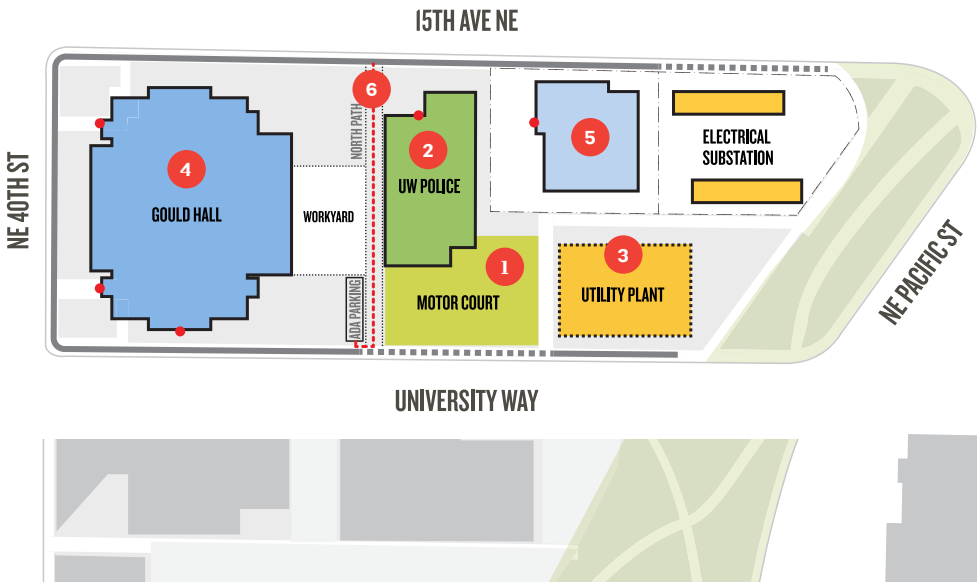
Jury's Statement

An elegant, highly visible law enforcement building that is well scaled to the community. The massing strategy is very successful at breaking down the building scale and expressing the building program elements.



Site Plan

- | | |
|---------------|-----------------------|
| 1 Secure Area | 4 Education |
| 2 Public | 5 Non-University Use |
| 3 Utility | 6 Pedestrian Shortcut |
- Public Entrance

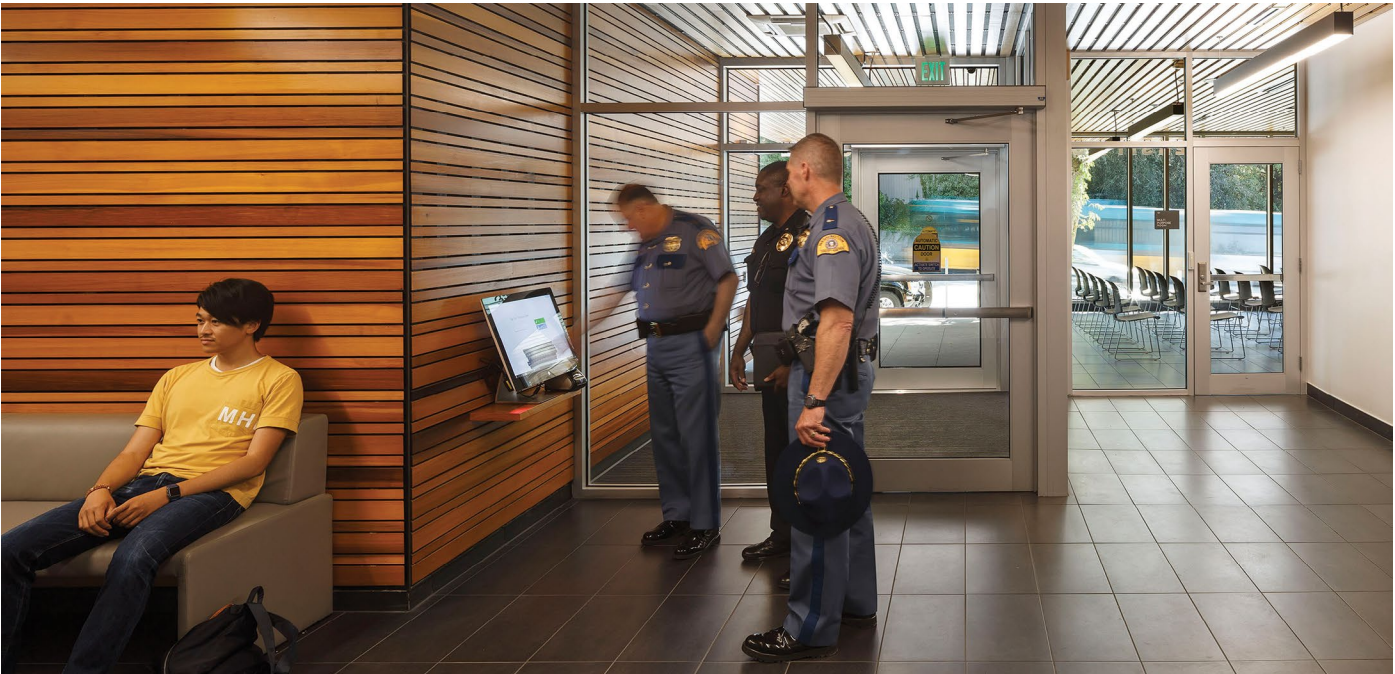


Architect’s Statement

The University of Washington’s campus police serve nearly 68,000 students, faculty, staff, and visitors within the 700-plus-acre campus. This new 30,000-square-foot purpose-built facility supports the unique role and character of this agency in what is essentially a small city. The design solution is the result of intentional alignment with the police department’s main goals: the new central location improves visibility and vehicular access to main arterials while providing new program elements, such as suspect and evidence processing that support criminal procedure and investigation. This reduces response time and leads to an overall reduction in, and fear of, crime.

A welcoming and transparent main entrance with adjacent multi-use meeting space facilitates community engagement and mentoring. The police welcome all of campus to use the building’s community room, adding both an asset to the community and positive physical interactions to strengthen local relationships. The university’s residence halls and other campus buildings extend west of campus into a lively “university district,” where the service boundaries between university policy and Seattle’s police are blurred. With frequent collaboration between agencies, a convenient report writing room was provided for outside agencies.

As a large world-class public university, the University of Washington is engaged in dialogue relative to local, national, and world events, which can involve activities resulting in civil disturbance. The university has demonstrated its commitment to safety by prioritizing this non-academic project to be located in a prominent location on a campus that has huge demand for buildable sites. This project enables the university to stay competitive in attracting the best students by increasing the perception of safety, a powerful factor for students and parents during the selection process. Transgender students feel safest using restrooms in the campus police facility, reinforcing the building’s ability to support safety not only campus-wide but at the individual level.



Owner

University of Washington

Data

Type of Facility:
Law Enforcement

Type of Construction:
New

Site Area:
37,796 SF

Building Area:
28,241 GSF

Construction Cost:
\$14,119,000

Project Delivery Type:
GC/CM

Funding:
Public

Status of Project:
Completed 2016

Capacity:
90

Credits

Design Architect:
The Miller Hull Partnership, LLP

Architect of Record:
McClaren, Wilson & Lawrie

Programming:
McClaren, Wilson & Lawrie

Structural Engineer:
PCS Structural Solutions

MEP/FP Engineer:
Notkin Mechanical Engineers

Landscape Engineer:
Gustafson Guthrie Nichol

Electrical Engineer:
Travis Fitzmaurice and Associates

Lighting Engineer:
Travis Fitzmaurice and Associates

Low Voltage Engineer:
Travis Fitzmaurice and Associates

Security Electronics:
RFI

Hardware:
Adams Consulting and
Estimating

Signage:
Tube Art Group

Contractor:
BN Builders

Photographer:
Lara Swimmer Photography



PUBLISHED

Dallas County Jail
Medical and Mental Health Modifications

Senator Daniel K. Inouye Defense POW/MIA
Accounting Agency Center of Excellence

Montgomery County Circuit Court

North Butte County Courthouse

San Mateo County Maple Street Correctional Center

Dallas County Jail Medical and Mental Health Modifications

Dallas,
Texas

Architect's Statement

The Dallas County Jail Medical and Mental Health Modifications is a one-of-a-kind facility renovation and modification of the lowest three floors of the Lew Sterrett North Jail Tower in Dallas. Operated by the county's nearby New Parkland Hospital, the jail modifications create a stand-alone, centralized medical-mental health services facility with a primary goal of limiting

the number of inmate visits to Parkland's emergency room and the number of inpatient stays, while providing medical and mental health care for the jail's average population of approximately 6,000 inmates. While on-site correctional health is managed through a unique partnership with the nearby hospital, the improvements recently completed for the Dallas County Jail establish the facility as a national model for correctional healthcare.

With modifications to several floors of the west jail tower, mental health program spaces are now included, with two distinct aspects of the design solution that include segregated movement for mental health inmate patients and a secure suite for clinicians and staff movement. Mental health inmate patients have a separate path of movement through the facility to provide the proper treatment environments to increase positive outcomes. The core design of the treatment floor incorporates a secure suite to allow clinicians and security staff free and unobstructed movement between treatment areas in a secure environment, thus decreasing response times.

The renovated space includes separate medical and mental health clinics, dental office, a full service pharmacy, a radiology unit and two intensive care units, one for men and one for women, along with medical staff offices. As the first of its kind in the country it is expected to change the way inmates in county jails are cared for throughout the United States. In fact, the Department of Justice has mandated that county facilities nationwide plan to provide similar medical and mental health services.



Mental health dayroom provides soothing colors and access to indirect light.

Jury's Statement

This is the first of its kind, dedicated to mental illness with an integrated full service approach. There is a clear segregation of the medical staff from the inmate circulation within the clinic areas, and strong interiors and medical planning.



Transformed from a storage area into a one-of-a-kind clinic/medical infirmary.

Owner

Dallas County Sheriff's Office and Parkland Health and Hospital System

Data

Type of Facility:
Multiuse/Other

Type of Construction:
Renovation

Building Area:
139,657 GSF

Construction Cost:
\$38,763,891

Project Delivery Type:
Construction Management at Risk

Funding:
Public bond issue

Status of Project:
Completed 2015

-

Capacity:
Total: 282 beds

104 Medical Beds
(Female Infirmary 20 + Male Acute Care 44 + Male Step Down 44)

146 Mental Health Beds
(51 female + 95 male)

Credits

Design Architect:
HDR

Construction Manager:
Hill International, Inc.

Structural Engineer:
Jaster-Quintanilla

MEP Engineer:
HDR

HVAC & Plumbing:
EnGlobal

Civil Engineer:
APM & Associates

Security Consultant:
HDR

-

Cost Estimator:
Construction Cost Management

Data & Communications:
Wai-Wize

Contractor:
Hill International Inc. Owner representative and project manager

Photographer:
Photos courtesy of HDR Architecture, Inc.

©2015 Emily Hagopian

Senator Daniel K. Inouye Defense POW/MIA Accounting Agency Center of Excellence

Oahu,
Hawaii

Architect’s Statement

The Senator Daniel K. Inouye Defense POW/MIA Accounting Agency (DPAA) Center for Excellence project is a three-story, 136,497-square-foot building, located at Joint Base Pearl Harbor-Hickam in Oahu, Hawaii. The new DPAA facility consolidates operations that were previously dispersed on three military installations. The consolidation of the organization into one facility improved efficiency, productivity, and mission accomplishment. The previous facilities were not properly sized to accommodate the present workload or the number of assigned personnel.

DPAA is composed of jointly manned units, including personnel from all four branches of the armed forces. There are also Department of the Navy civilian personnel that comprise a portion of the DPAA staff. The new facility provides space for assigned personnel and provides the support spaces required by DPAA's complex mission.

By bringing all operations under one roof, the new three-story facility demonstrates the unique function and mission of DPAA by providing advanced investigation laboratories, a highly sustainable and flexible working environment for staff, and appropriate spaces for the families of the deceased. Primary laboratory spaces include the DPAA Laboratory, the Material Evidence and Life Support Investigation Lab, a DNA lab, and a complete forensic medicine facility.

DPAA Vision: A world-class workforce fulfills our nation's obligation by maximizing the number of missing personnel accounted for while ensuring timely, accurate information is provided to their families.

DPAA Mission: Provide the fullest possible accounting for our missing personnel to their families and the nation.

Jury’s Statement

This is the largest anthropology laboratory of its kind in the world. Its strong central atrium and interior spaces are supportive and comfortable for the families. There is also a strong use of forms and textures on the exterior, which are suggestive of traditional Pacific architecture.



Owner

Defense POW/MIA Accounting Agency, Department of Defense

Data

Type of Facility:
Multiuse/Other

Type of Construction:
New

Site Area:
375,908 SF

Building Area:
136,497 GSF

Construction Cost:
\$89,000,000

Project Delivery Type:
Design-Bid-Build

Funding:
FY11 MCON P-005

Status of Project:
Completed January 2016

Credits

Design Architect:
SmithGroupJJR

Architect of Record:
SmithGroupJJR

Local Architect, Consultant:
RMA Architects Inc

General Contractor:
NAN, Inc.

Structural Engineer:
Nagamine Okawa Engineers

MEP Engineer:
SmithGroupJJR

Laboratory Planning:
SmithGroupJJR

AV/Data/IT:
DCS Technology Design, LLC

Security:
BLW Security Group

Local MEP:
Thermal Engineering and
NOA Engineers

Fire Protection and Life Safety:
SSDA – SS Dannaway Associates

Civil Engineer:
SSFm International

Landscape Architect:
Brownlie & Lee

Electrical Engineer:
Nakamura, Oyama & Associates

Environmental:
Masa Fujioka & Associates

Geotechnical:
Hirata & Associates

Cost Estimation:
J Uno

Photographer:
Liam Frederick

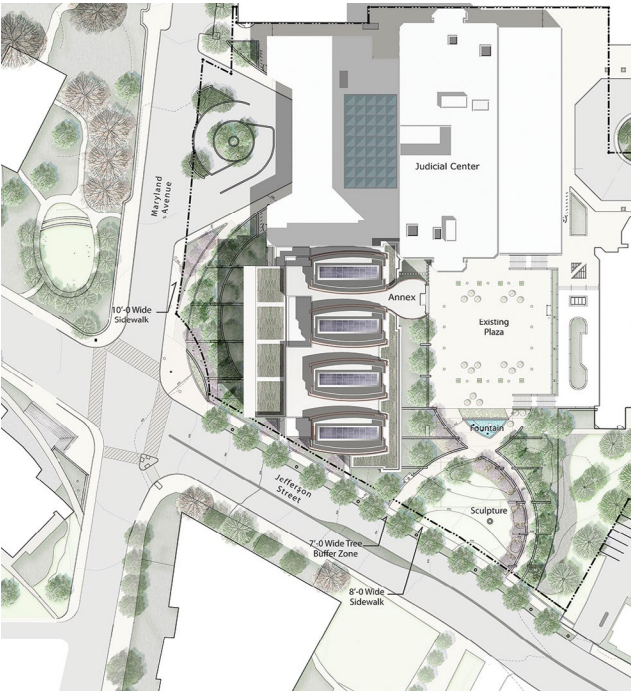
Montgomery County Circuit Court

Rockville,
Maryland



Architect's Statement

The Montgomery County Circuit Court has become the eastern anchor for a revitalized government center and a symbol of the courts' important role in the community. Sited in downtown Rockville, this project involves the design of a new courts annex and renovation of parts of the existing courthouse.



The design approach seeks balance, maintains cohesion through common purpose, and focuses on the compelling ideals of an orderly society.

Prominently displayed are the courtrooms, intended to become the central expression of the building. Each of the four sets of stacked courtrooms is given a unique figural expression as a powerful column or "pillar." The pillars, clad in copper-toned metal panels, represent the dignity of the judicial system. Each pillar is topped by glass "lanterns" that glow as beacons, highlighting the importance of the judicial system. The lanterns are powered by photovoltaic cells. The design improves circulation throughout the complex.

The expansion allowed for reconfiguration of the existing entry screening areas to provide additional screening stations and improved queuing and flow. This accommodates extensive indoor queuing. Reuse of the existing entries and creation of the new perpendicular public corridor to the annex allow the public circulation on the building's first floor to be organized in a simple, user-friendly "T" configuration to facilitate wayfinding. Areas of renovation were limited to roofing and HVAC upgrades, main public corridors, restrooms, and areas of ADA non-compliance as well as jury assembly, and additional areas affected by relocation and consolidation to the annex.

The annex features a four-court-per-floor plan organized around a north-south corridor that overlooks a shared government plaza and landscaped park. The public face is expressed with an extremely transparent glass curtainwall system looking out onto a shared plaza. Judicial officer spaces look out to both the District Court and the historic court plaza.

Jury's Statement

There is a clear expression of the courtroom in the planning, interior public spaces, and exterior architectural language. The inside-out design idea for the courtrooms and public spaces is reinforced by the transparent exterior envelope.



Owner

Montgomery County Department
of General Services Office of
Special Projects

Data

Type of Facility:
Courts

Type of Construction:
Addition and Renovation

Site Area:
217,667 SF

Building Area:
458,964 GSF

Construction Cost:
\$88,407,000

Project Delivery Type:
Design-Bid-Build

Status of Project:
Completed 2015

Capacity:
13,332 max occupants

Credits

Design Architect:
AECOM

Life Safety:
Rolf Jensen & Associates

Cost Estimator:
Faithful + Gould

Civil Engineer:
Adtek Engineers, Inc.

Geotechnical Engineer:
Schnabel Engineering

MEP Annex Engineer:
AECOM

MEP Renovation Engineer:
Diversified Engineering

Fire Protection Engineer:
AECOM

Structural Engineer:
AECOM

Landscape Architect
Mahan Rykiel Associates

IT/Security Engineer:
AECOM

Commissioning:
Gretchen Coleman
Commissioning Group, LLC

A/V and Acoustical Consultant:
Newcomb-Boyd

Vertical Transportation:
Lerch Bates & Associates

Lighting Consultant:
C.M. Kling & Associates, Inc.

Envelope Consultant:
Wiss Janney Elstner Associates, Inc.

Specification Consultant:
Heller & Metzger, PC.

LEED Facilitator:
AECOM

Contractor:
Tompkins Builders

North Butte County Courthouse

Chico,
California

Architect’s Statement

The North Butte County Courthouse is a modern two-story courthouse that serves as an important anchor to the new Meriam Park development in Chico, California. The goals of this courthouse’s design were twofold: reflect the unique culture of Chico in the architecture, and be both highly functional and accessible for the public and the permanent staff.

The building is organized with four courtrooms on the second floor, supported by judicial chambers, jury deliberation rooms, law library, court administration, and public access amenities. The first floor houses the high volume court, public counters, jury assembly, a self-help center, and family services. Public vertical circulation is prominently located behind security screening, with clear wayfinding to public counters through natural flow of circulation space along the southern edge of the building.

The basement contains primary in-custody holding, vehicle Sallyport, special environmental records, IT and security services, and building support spaces. The courthouse has planned to integrate three additional courtrooms stacked below those on the second floor, with building expansion for court operations and public counters to the north of the building mass. Repurposing of the jury assembly area permits connection to future development.

Owner

Superior Court
of California

Data

Type of Facility:
Courts

Type of Construction:
New

Site Area:
196,000 SF

Building Area:
67,442 SF

Construction Cost:
\$39,000,000

Project Delivery Type:
Design-Bid-Build

Funding:
General Funds,
Adequate Financing

Status of Project:
Completed

Capacity:
Number of Courts – 5
(criminal/high security, civil, domestic,
juvenile, traffic/hearing)

Credits

Design Architect:
TSK Architects

Programming:
Dan L. Wiley and Associates

Structural Engineer:
John A. Martin and Associates

MEP/FP Engineer:
IBE Consulting Engineers
(Stantec)

Civil Engineer:
NorthStar Engineering

Landscape Architect:
SWA Group

Lighting Engineer:
KGM Architectural Lighting

Low Voltage Engineer:
Safir Rosetti (Guidepost Solutions)

Acoustic Engineer:
Newson Brown Acoustics

Signage:
Redmond Schwartz Mark Design

Environmental Consultant:
CGI Technical Consultants

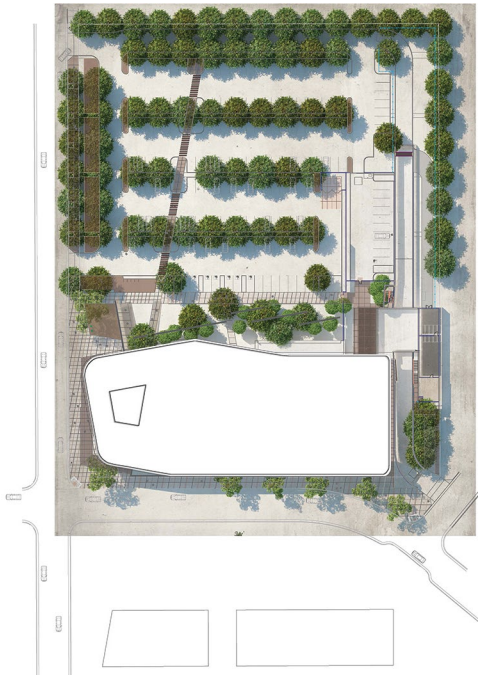
Contractor:
Otto Construction

Construction Manager:
Vanir Construction

Photographer:
Bruce Damonte

Jury’s Statement

The massing composition and design story link well to the Northern California region, and the courtrooms benefit from the use of daylighting from two directions. The interior spaces and materials are well developed and elegant.



San Mateo County Maple Street Correctional Center

Redwood City,
California

Architect’s Statement

This light-filled, LEED Gold-certified facility for San Mateo County is a civic gateway in Redwood City, California, preparing people in a safe and secure environment for new purpose in their lives. Surrounding landscapes provided inspiration for the design: colors of the Bay, textures of the wetlands, and symbolism of the surrounding hills and mountains. The open and inviting public lobby is a curved, double-height, light-filled space, maximizing views and connecting with an exterior rain garden. A large, staff dining room and state-of-the-art gym, both overlooking the water, provide peaceful areas of respite. Transitional housing units for inmates—evolving from restricted, secure environments to work release programs and less restrictive classifications—were developed similar to dormitories, with softer finishes and more residential fixtures. Kennels integrated within housing units facilitate a dog-training program associated with a local shelter. Healthy living skills and training programs were made possible through a dedicated culinary teaching kitchen and dining area. Secure housing units were developed with natural ventilation and maximum daylight for inmates in this transformative approach to corrections.

Owner

County of San Mateo

Data

Type of Facility:
Corrections/Detention

Type of Construction:
New

Site Area:
180,000 SF

Building Area:
276,000 GSF

Construction Cost:
\$164,000,000

Project Delivery Type:
CM/GC

Funding:
Public

Status of Project:
Completed 2016

Capacity:
832

Credits

Design Architect:
Hellmuth, Obata + Kassabaum

Interiors/Landscape Architect:
Hellmuth, Obata + Kassabaum

Structural Engineer:
SOHA Engineers

MEP/FP Engineer:
Basis of Design – HOK
D/B Mechanical – FM Booth

D/B Electrical – Cupertino
D/B Plumbing – Pan Pacific
D/B Fire Sprinklers – Transbay
Fire Protection
D/B Fire Alarm – Engineered
Control Systems

Civil Engineer:
Telamon Engineering
Consultants, Inc.

Security Electronics:
Basis of Design – Guidepost
Solutions
D/B SEC/DEC – CML RW

AV & Acoustical Consultant:
Teecom Design Group

Food Service & Laundry:
The Marshall Associates

Vertical Transportation:
Syska Hennessy Group

Soils Engineer:
ENGEO

Energy Modeling:
Glumac

Commissioning:
Enovity

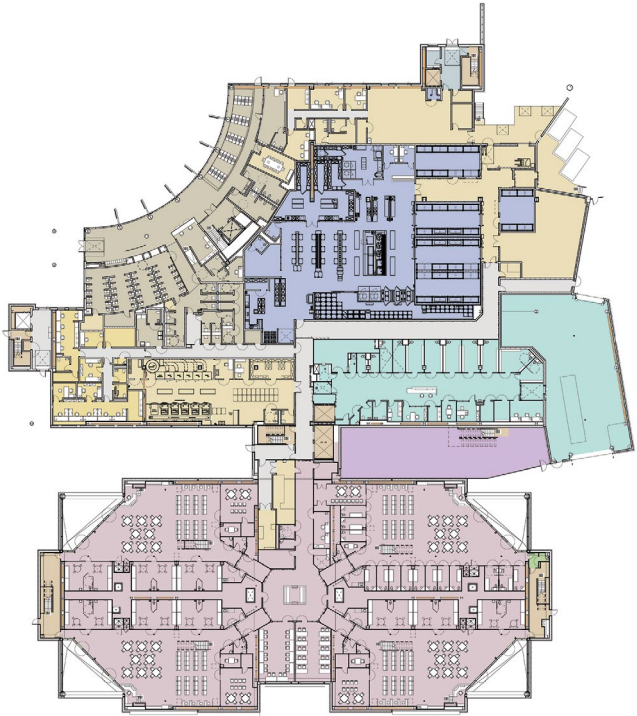
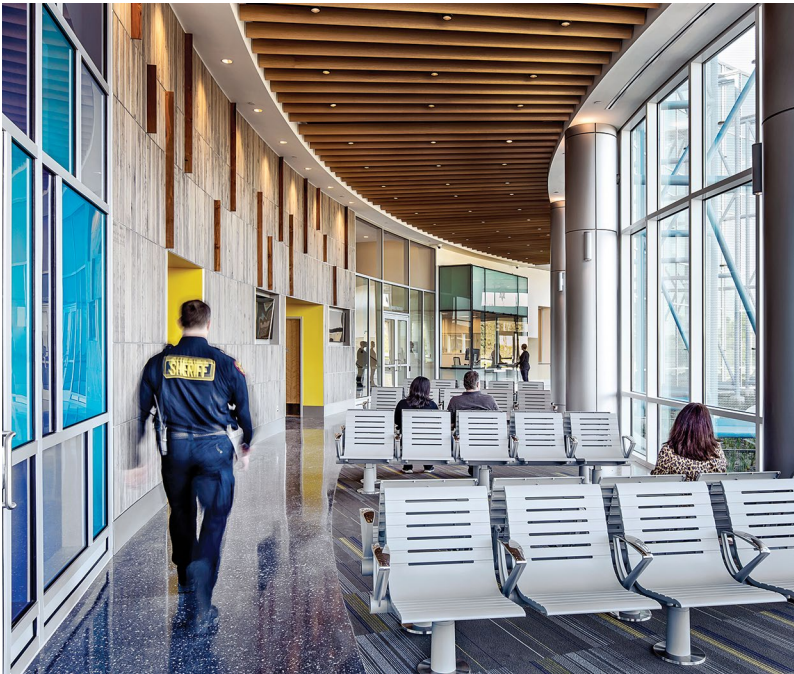
Life Safety:
The Fire Consultants

Construction Manager:
Sundt-Layton, a Joint Venture

Photographer:
John Swain
Donald Satterlee

Jury’s Statement

This reimagined detention center expresses compassion for the inmates and does a great job of reaching out to the community. Its strong interior and program spaces are a result of the curved entry massing.



Index of Architects

Citations

12
Hellmuth, Obata + Kassabaum
San Francisco
Public Safety Campus

16
Perkins+Will
LAPD Metropolitan
Division Facility

20
DGBK Architects
Okanagan
Correctional Centre

24
Adamson Associates Architects
Thunder Bay
Consolidated Courthouse

28
The Miller Hull Partnership, LLP
University of Washington
Police Department

Index of Architects

Published

34
HDR
Dallas County Jail Medical and
Mental Health Modifications

36
SmithGroupJJR
Senator Daniel K. Inouye Defense
POW/MIA Accounting Agency
Center of Excellence

38
AECOM
Montgomery County
Circuit Court

40
TSK Architects
North Butte
County Courthouse

42
Hellmuth, Obata + Kassabaum
San Mateo County
Maple Street Correctional Center

Academy of Architecture for Justice

an **AIA** Knowledge Community



**The American
Institute
of Architects**



1735 New York Avenue, NW
Washington, DC 20006

aia.org

© 2017 American Institute of Architects