

CCC Blackburn Center

Portland, Oregon



SQ FT

116,000

building GSF



**OWNER/
AFFILIATION**

Central City Concern



ARCHITECT(S)

Ankrom Moisan Architects



COMPLETION DATE

June 2019



Looking NW along Burnside St.



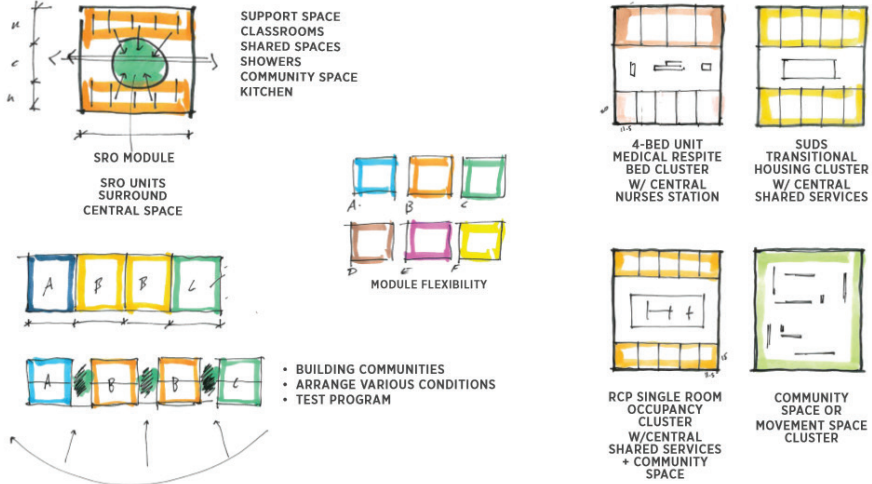
Close-up of southern sun shades



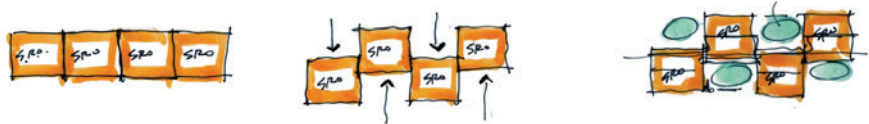
Close-up of Blackburn sign at entry



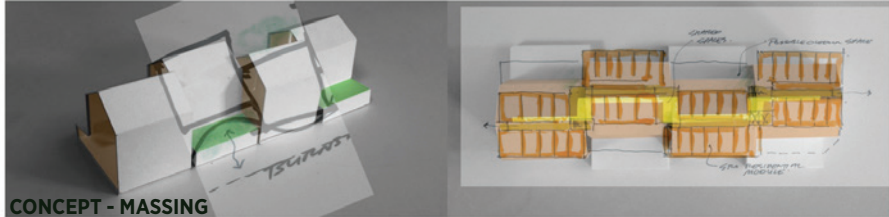
SITE MAP



Single-room occupancy units are designed to be flexible with human-centered attributes of healing where common shared spaced are surrounded by housing units. Each cluster is designed to be modular with opportunity to convert spaces on demand. This concept seeks to organize the units into clusters, or family pods, emphasizing not only the idea of ‘HOME’ and all the feelings of stability and comfort, but also to encourage interaction and support among the residents.



PEER RELATIONSHIPS THAT NURTURE AND SUPPORT
PERSONAL TRANSFORMATION AND RECOVERY



CONCEPT - MASSING

ABOUT | DESIGN INTENTIONS

The building design is a resultant of four modules creatively arranged and stacked on the site. Each Module is positioned to maximize light and air, allow various types of outdoor spaces, create a scaled frontage along the street, carve out south-facing public spaces, and orient edges towards public transit.