



Shaping Tribal Well-Being

Copyright Notice

This presentation is protected by US and International Copyright laws. Reproduction, distribution, display and use of the presentation without written permission of the speaker is prohibited.

© The American Institute of Architects 2018

AIA/CES Compliance Statement

“AIA Knowledge” is a Registered Provider with The American Institute of Architects Continuing Education Systems (AIA/CES). Credit(s) earned on completion of this program will be reported to AIA/CES for AIA members. Certificates of Completion for both AIA members and non-AIA members are available upon request.

This program is registered with AIA/CES for continuing professional education. As such, it does not include content that may be deemed or construed to be an approval or endorsement by the AIA of any material of construction or any method or manner of handling, using, distributing, or dealing in any material or product.

Questions related to specific materials, methods, and services will be addressed at the conclusion of this presentation.

AIA/CES Reporting Details

All attendees will be eligible to receive AIA continuing education for attending this course by completing the electronic form sent via email after the conference.

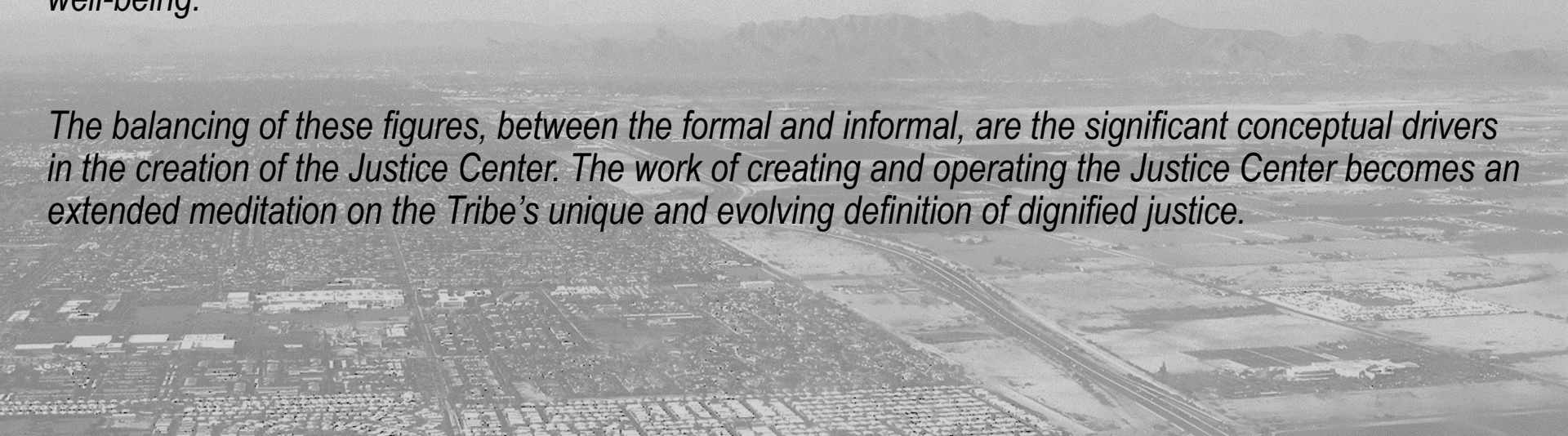
Continuing education questions can be directed to aaj@aia.org.

Course Description

This presentation will retell the making of the Salt River Pima-Maricopa Justice Center. It is a story of procedural formalization and disappearance of western justice formalisms.

The Salt River Pima-Maricopa Indian Community has long practiced mending holes in the Community fabric created by acts of injustice. New laws have helped carve out greater tribal sovereignty. Yet, as tribal autonomy leads to imposing stricter penalties, greater formal and spatial clarity are required for confidence in consistent methods of administering Justice. Yet no formality could be deemed independently successful by the tribe if the result of implementation caused placelessness, sterility, or inauthenticity. Nor could success be established if the court missed the mark of improving individual well-being.

The balancing of these figures, between the formal and informal, are the significant conceptual drivers in the creation of the Justice Center. The work of creating and operating the Justice Center becomes an extended meditation on the Tribe's unique and evolving definition of dignified justice.



Learning Objectives

1. *Test restorative principles for administering justice.*
2. *Study formal effects that reinforce security, authority, confidentiality, & validate procedures*
3. *Dissect spatial and operational characteristics that improve emotional support and refuge.*
4. *Evaluate the effects of new processes on re-entry and integration back into the Community*

INTRO

setting - wide context

PEOPLE

Pima “Akimel O’Odham” & Maricopa “Xalychidom Piipaash” & Gould Evans

PLACE

Metropolitan Phoenix . Salt & Verde Rivers of the Colorado River Watershed . Sonoran Desert

POSITION

Tribal Population Growth . Urban Influence . Expanding Sovereignty

CONTEXT

Criminal Justice and Community Health

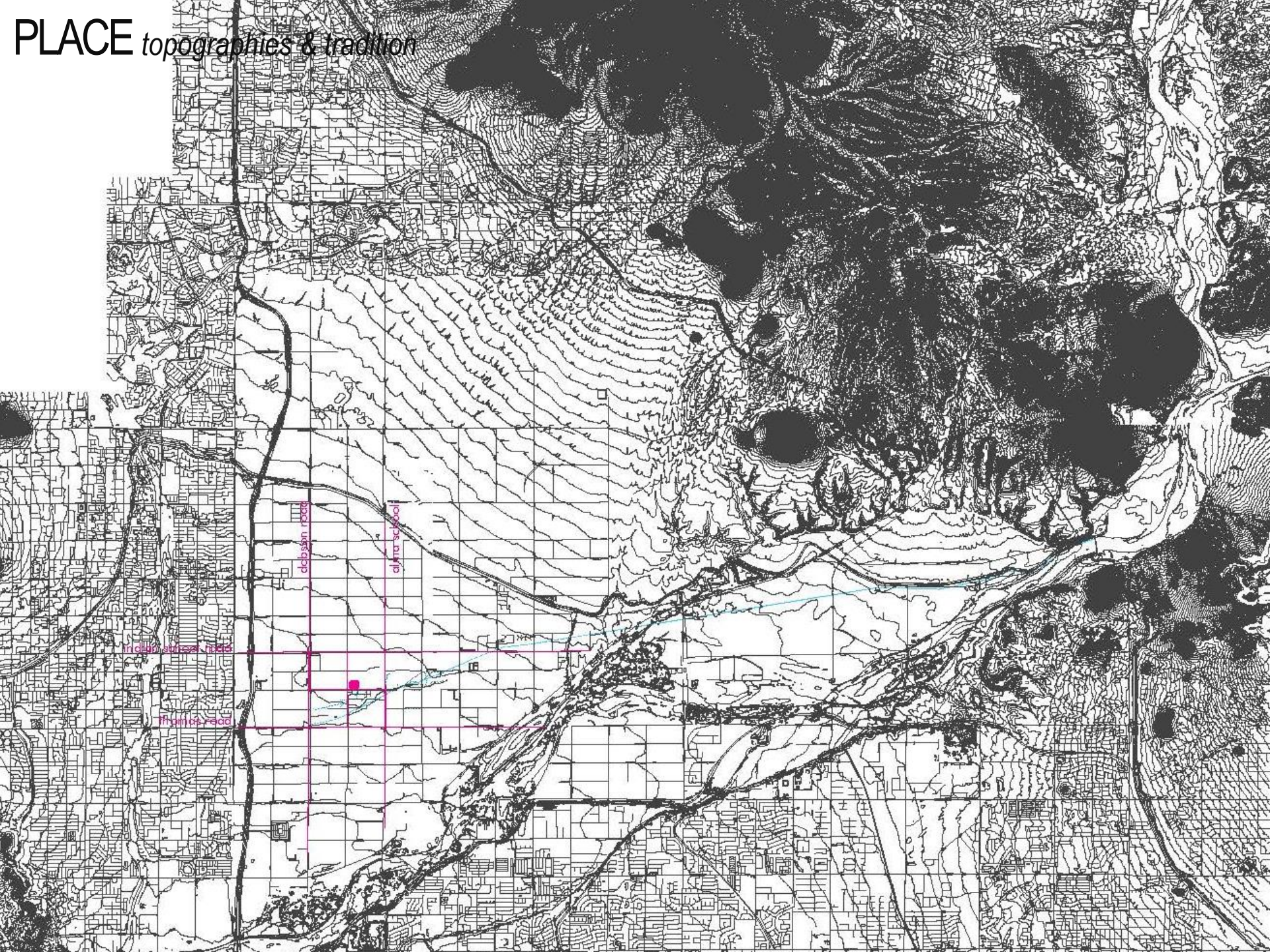
PEOPLE *Pima O'odham & Maricopa Piipaash & Gould Evans (lost white people)*

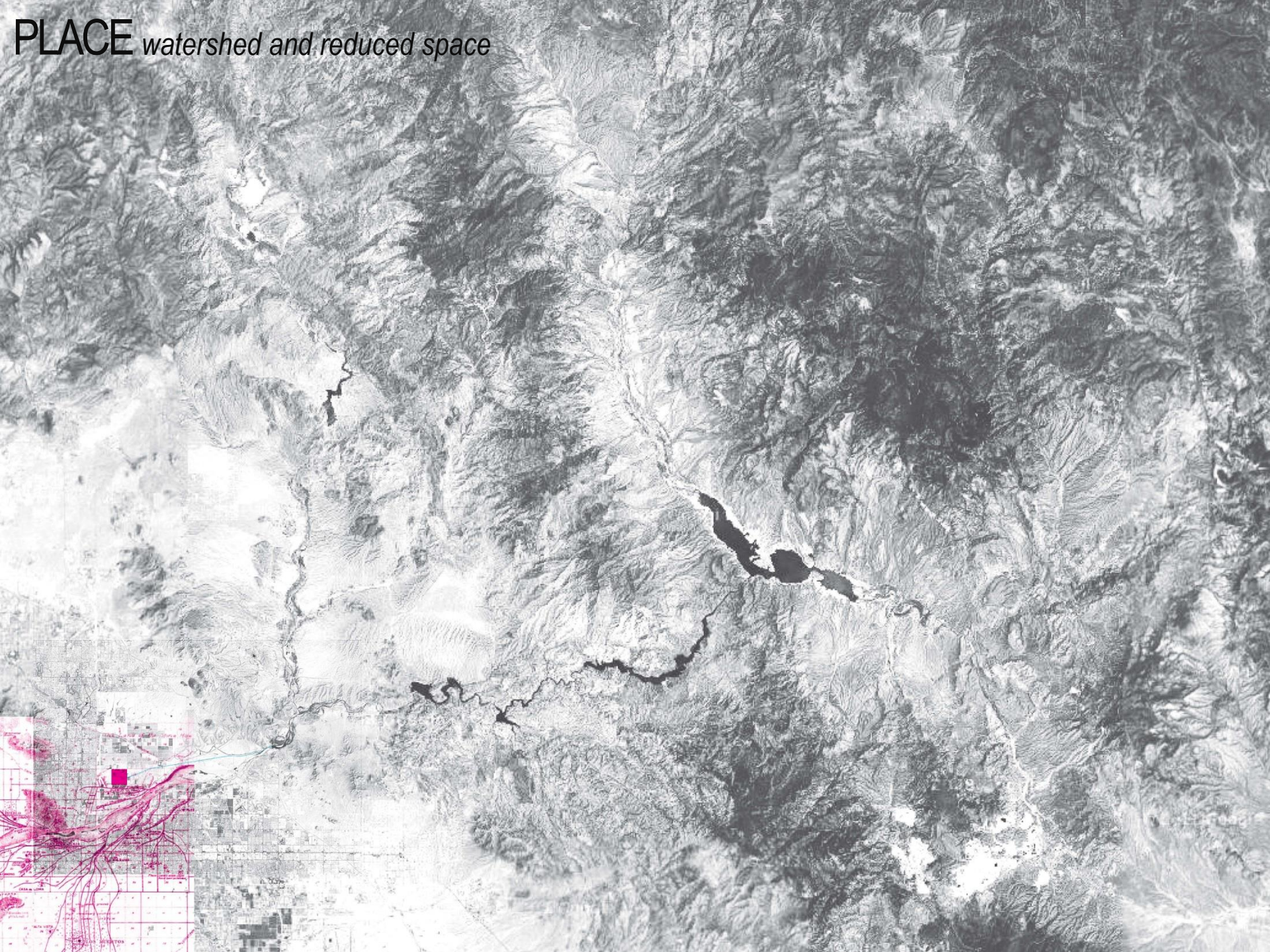


PLACE: *Pressure from urbanization*



PLACE *topographies & tradition*





PLACE watershed and reduced space

PLACE *sonoran desert*







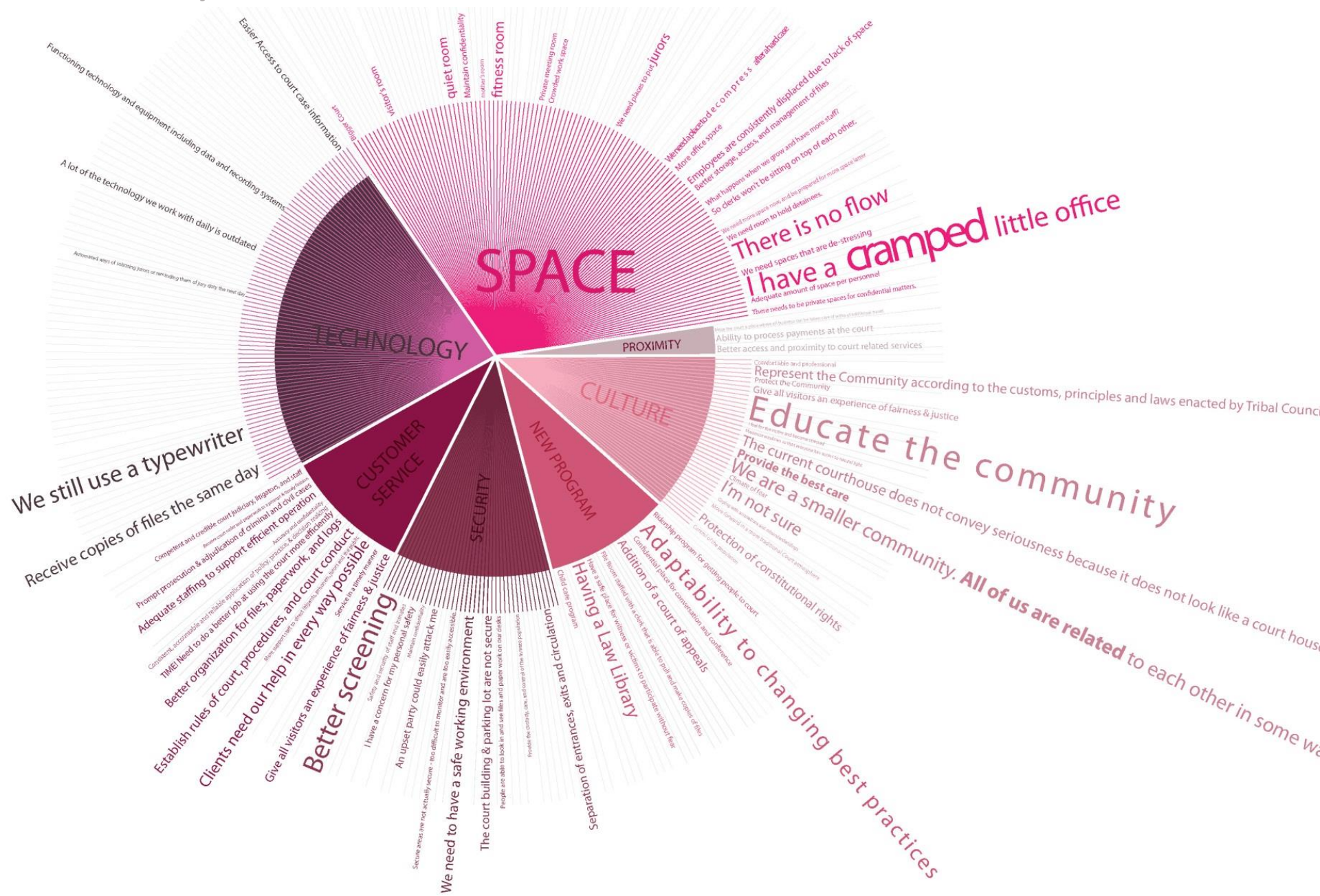
POSITION *tribal population growth*

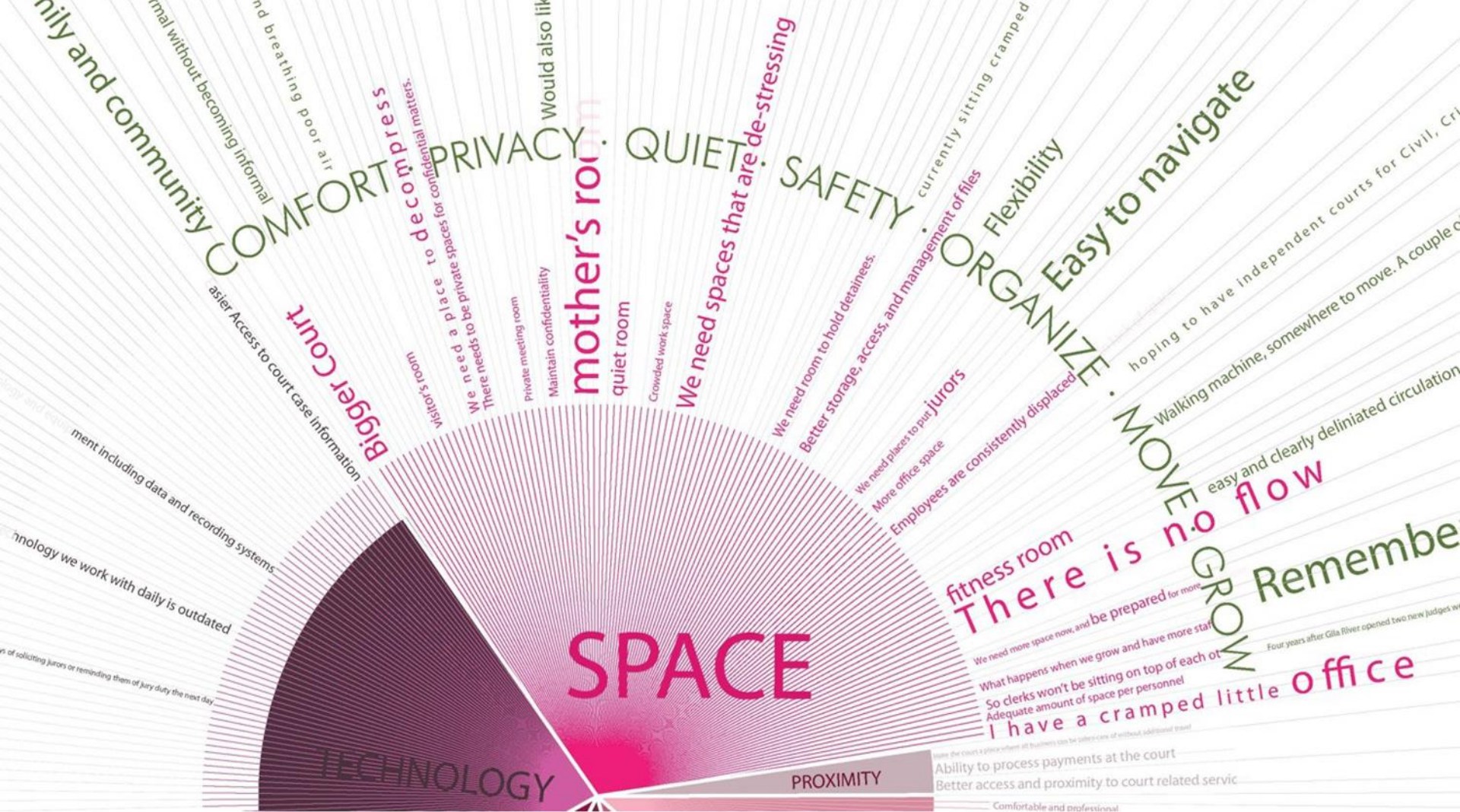
FROM	→	TO
2001		2018
Population 5,600		9,000

POSITION *new laws – expanded sovereignty*



CONTEXT *justice + social health*







test the fundamental value of Land Use



CONCENTRATED since Community Land has long been the ground of contested terrain

DISPERSED



"It doesn't have to be a grand building. That's not the way we are. If it is a tall building, you need to justify the height."



"I am not working in a basement, I've worked in a basement and it is depressing!! I've been downstairs without light. Natural light relieves stress."



Shaping Tribal Well-Being

Darayne Achin
Acting Chief Judge

Native Sensibilities

Kierstin Anderson
Legal Services Office, Managing Attorney

Integrated Justice

Jeffery Harmon
Chief Prosecutor, Managing Attorney

Victim Centered Approach

Aaron Herring
Lead Designer

Shape: social - spatial dimensions

Roundtable
Audience Discussion:

Intersections

NATIVE

vibrancy

TRADITION
sacred spiritual autonomy

GENETIC MEMORY
what one knows

LAND
Integrated in history and ritual

INTERPRETATIONS
Hybrids, changes & becoming urbanized



TRADITION: *sacred spiritual autonomy*

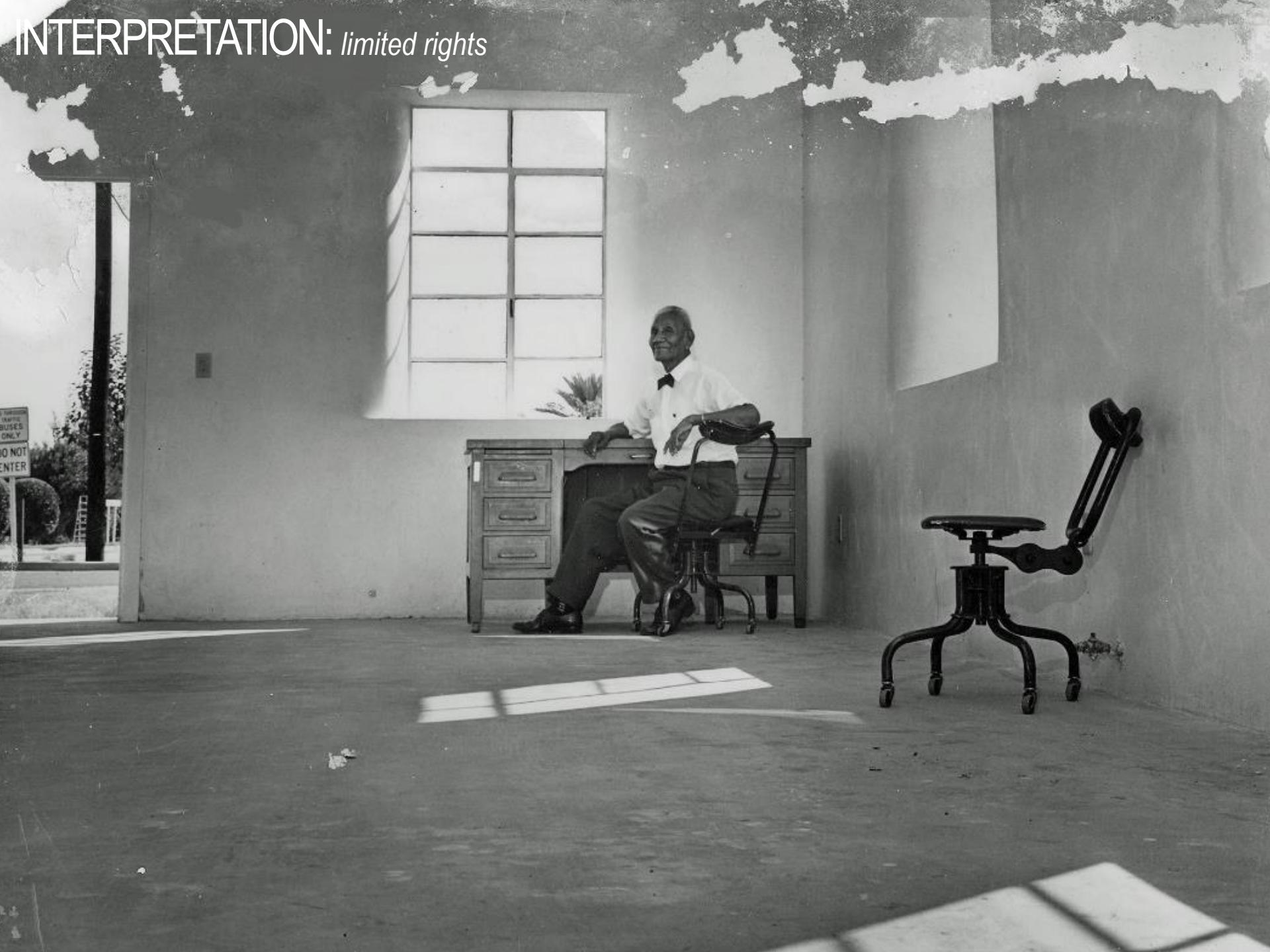


GENETIC MEMORY: *what one knows*



LAND : integrated in history and ritual

INTERPRETATION: *limited rights*



INTERPRETATION: *changes around urbanization*





boundaries

The background of the image is a clear blue sky with scattered white clouds. The clouds are more prominent on the right side and bottom, while the left side is mostly clear blue.

JUSTICE

'integrated'

TOGETHER & APART
centered, safety & privacy, separation,

COMMUNITY
social interactions & improved relationships

INTEGRATED JUSTICE
continuity of services



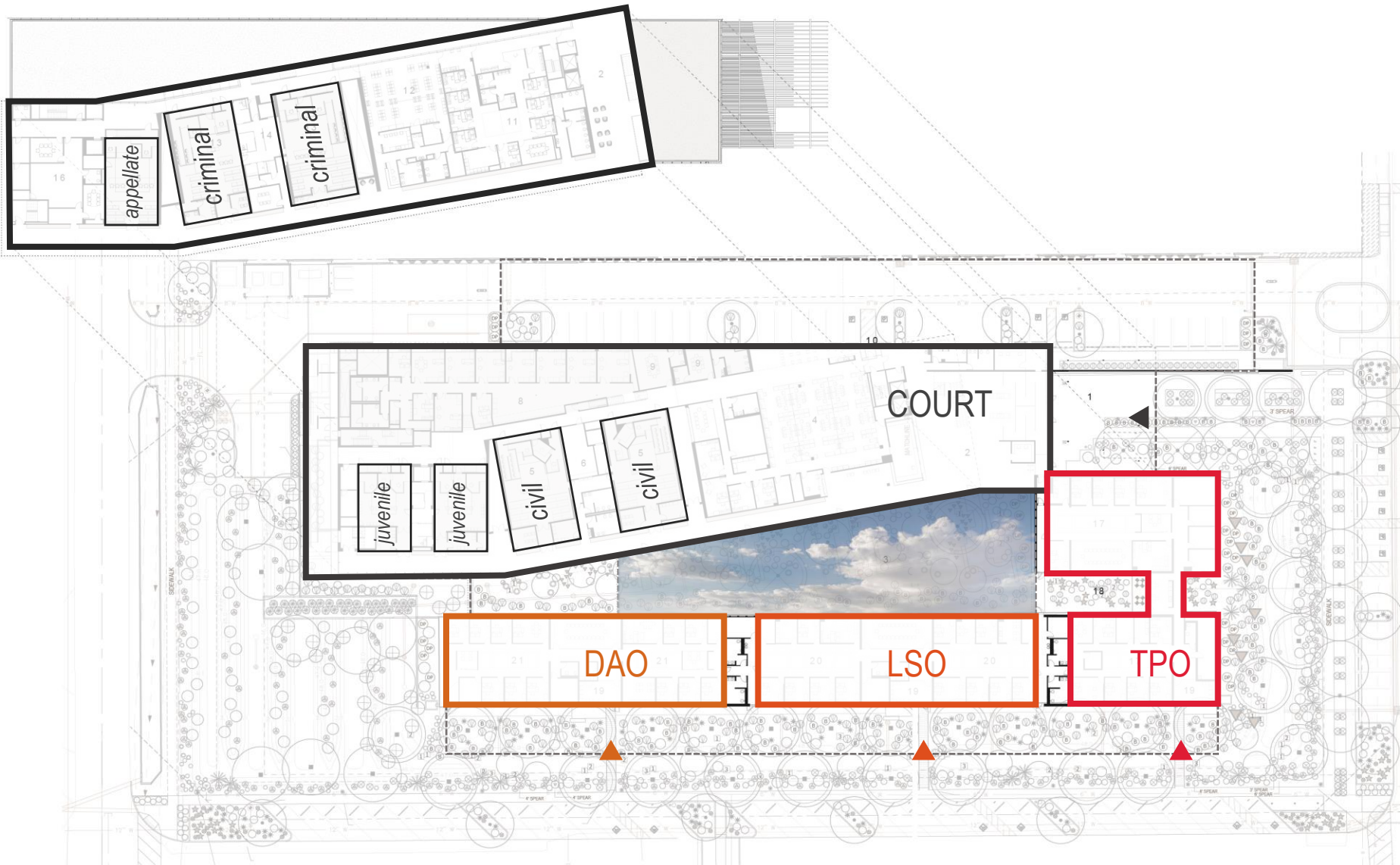
TOGETHER & APART: *centered*

TOGETHER & APART: *centered around a courtyard*



- | | | | | | |
|---|---------------------------|----|--------------------|----|-------------------------|
| 1 | ENTRY | 8 | JUDICIAL CHAMBERS | 15 | APPELLATE COURTROOM |
| 2 | LOBBY | 9 | JURY DELIBERATION | 16 | APPELLATE SUITE |
| 3 | SECURED OUTDOOR COURTYARD | 10 | TO SECURED PARKING | 17 | PROSECUTION |
| 4 | ADMINISTRATION | 11 | PROBATION | 18 | PRACTITIONERS COURTYARD |
| 5 | CIVIL COURTROOM | 12 | JURY ASSEMBLY | 19 | ENTRY LOBBY |
| 6 | BUSINESS CENTER | 13 | CRIMINAL COURTROOM | 20 | LEGAL SERVICES OFFICE |
| 7 | JUVENILE COURTROOM | 14 | IN-CUSTODY DOCK | 21 | TRIBAL DEFENSE |

TOGETHER & APART: *centralized & separated complex*

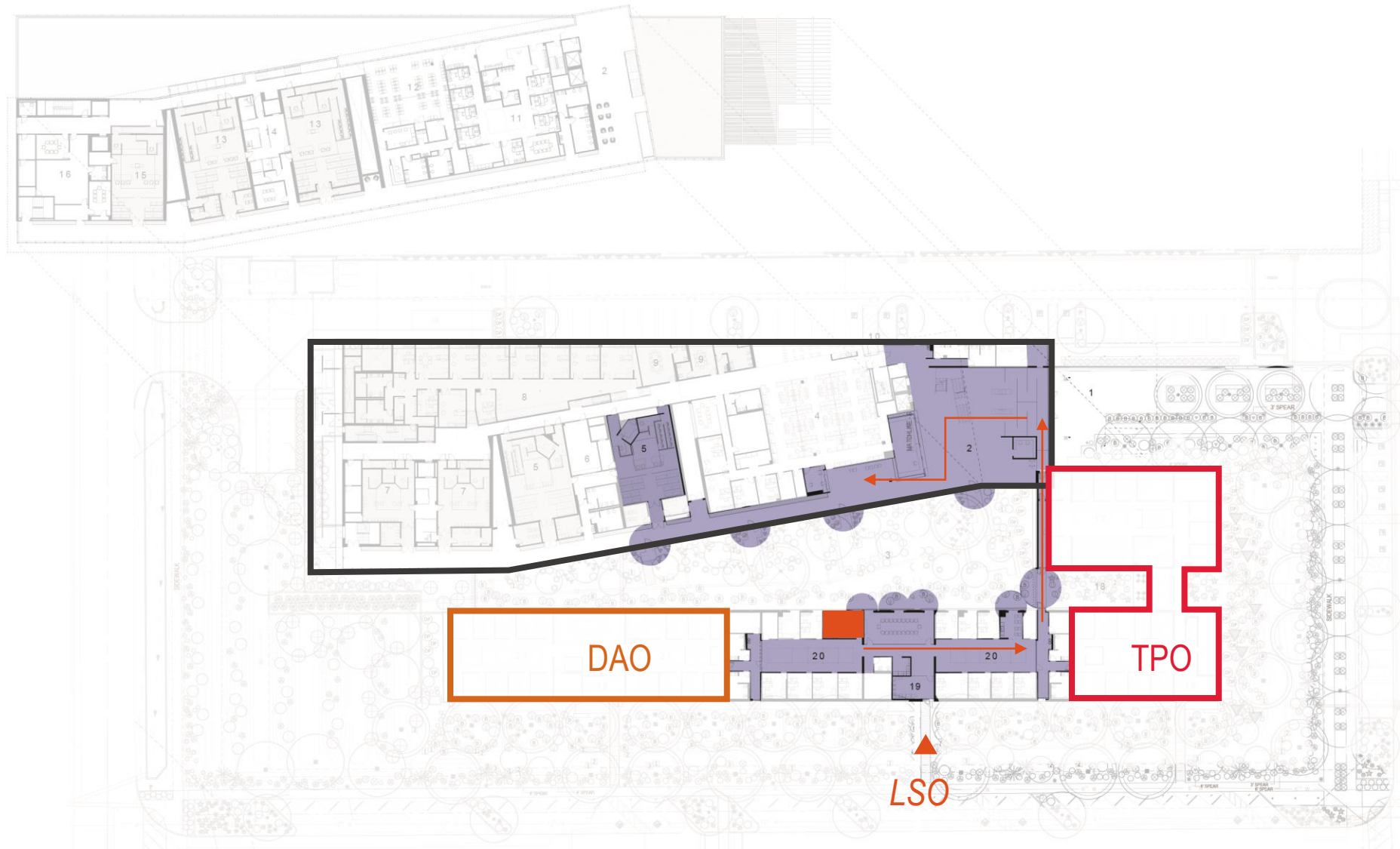


- 1 ENTRY
- 2 LOBBY
- 3 SECURED OUTDOOR COURTYARD
- 4 ADMINISTRATION
- 5 CIVIL COURTROOM
- 6 BUSINESS CENTER
- 7 JUVENILE COURTROOM

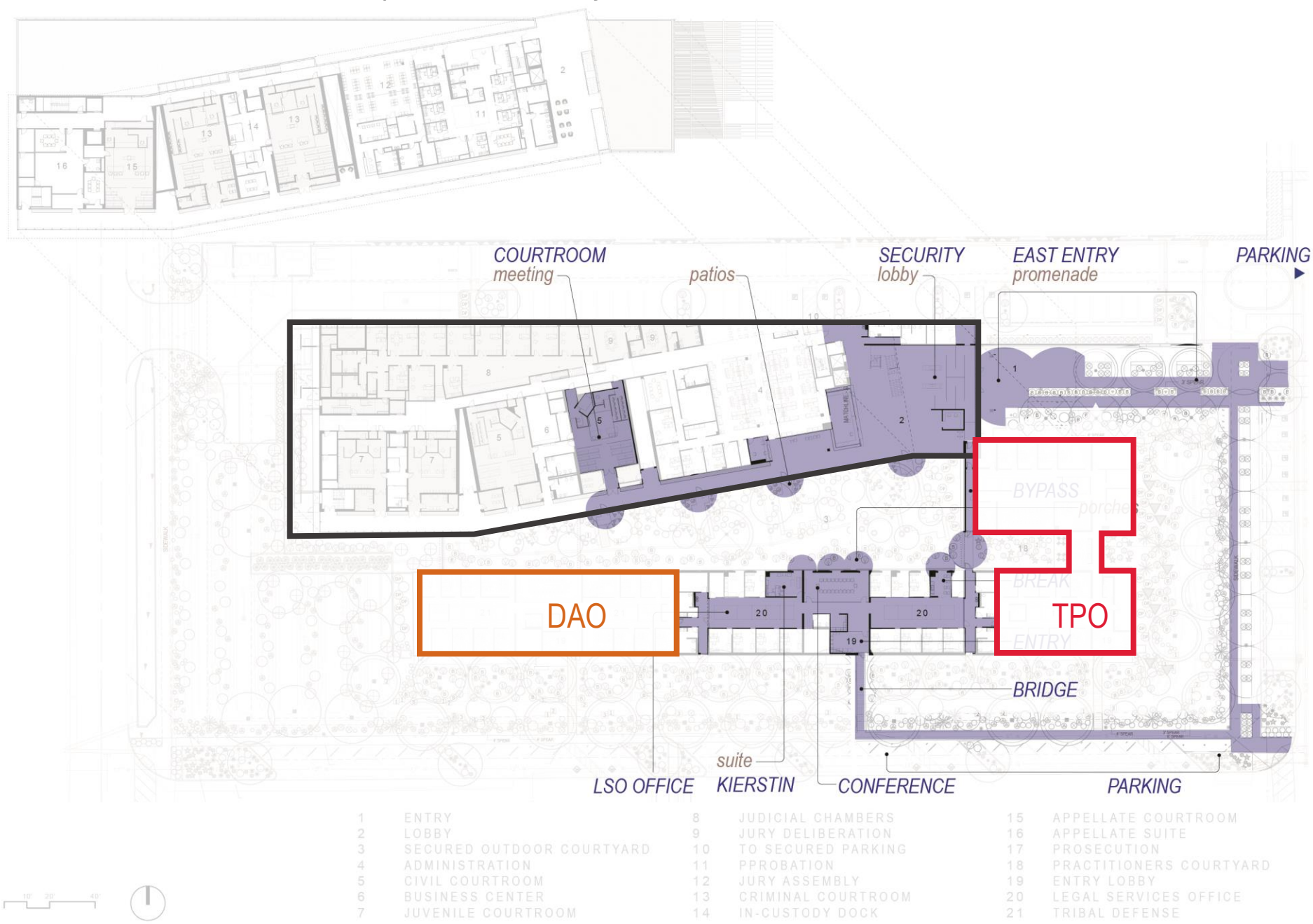
- 8 JUDICIAL CHAMBERS
- 9 JURY DELIBERATION
- 10 TO SECURED PARKING
- 11 PROBATION
- 12 JURY ASSEMBLY
- 13 CRIMINAL COURTROOM
- 14 IN-CUSTODY DOCK

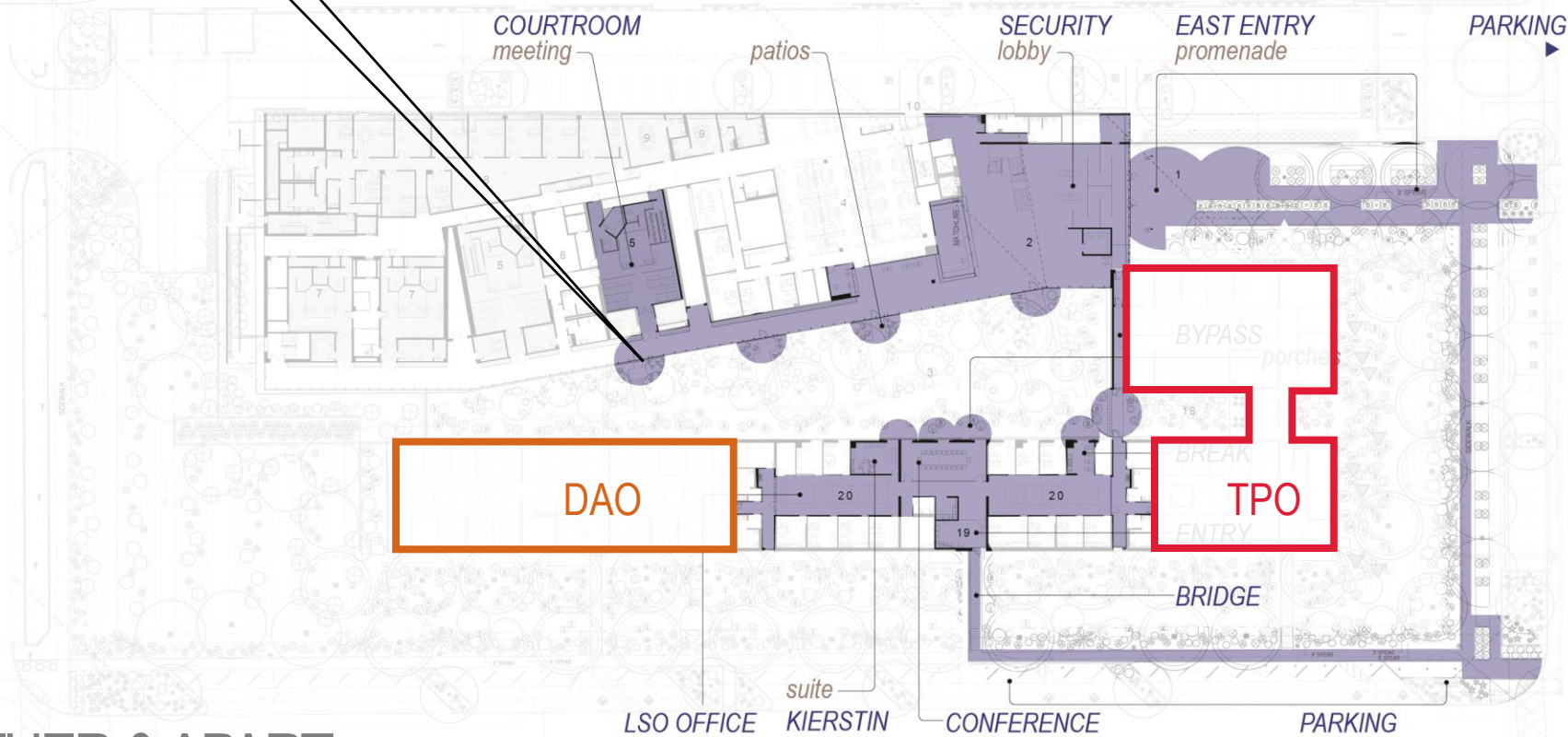
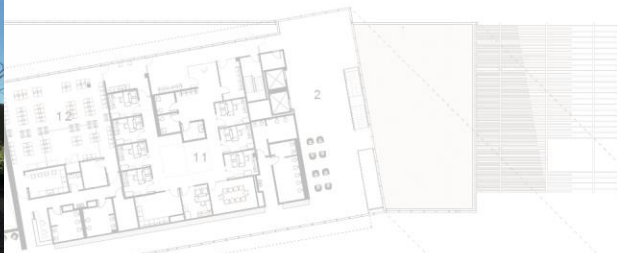
- 15 APPELLATE COURTROOM
- 16 APPELLATE SUITE
- 17 PROSECUTION
- 18 PRACTITIONERS COURTYARD
- 19 ENTRY LOBBY
- 20 LEGAL SERVICES OFFICE
- 21 TRIBAL DEFENSE

TOGETHER & APART: *inter-connectivity*

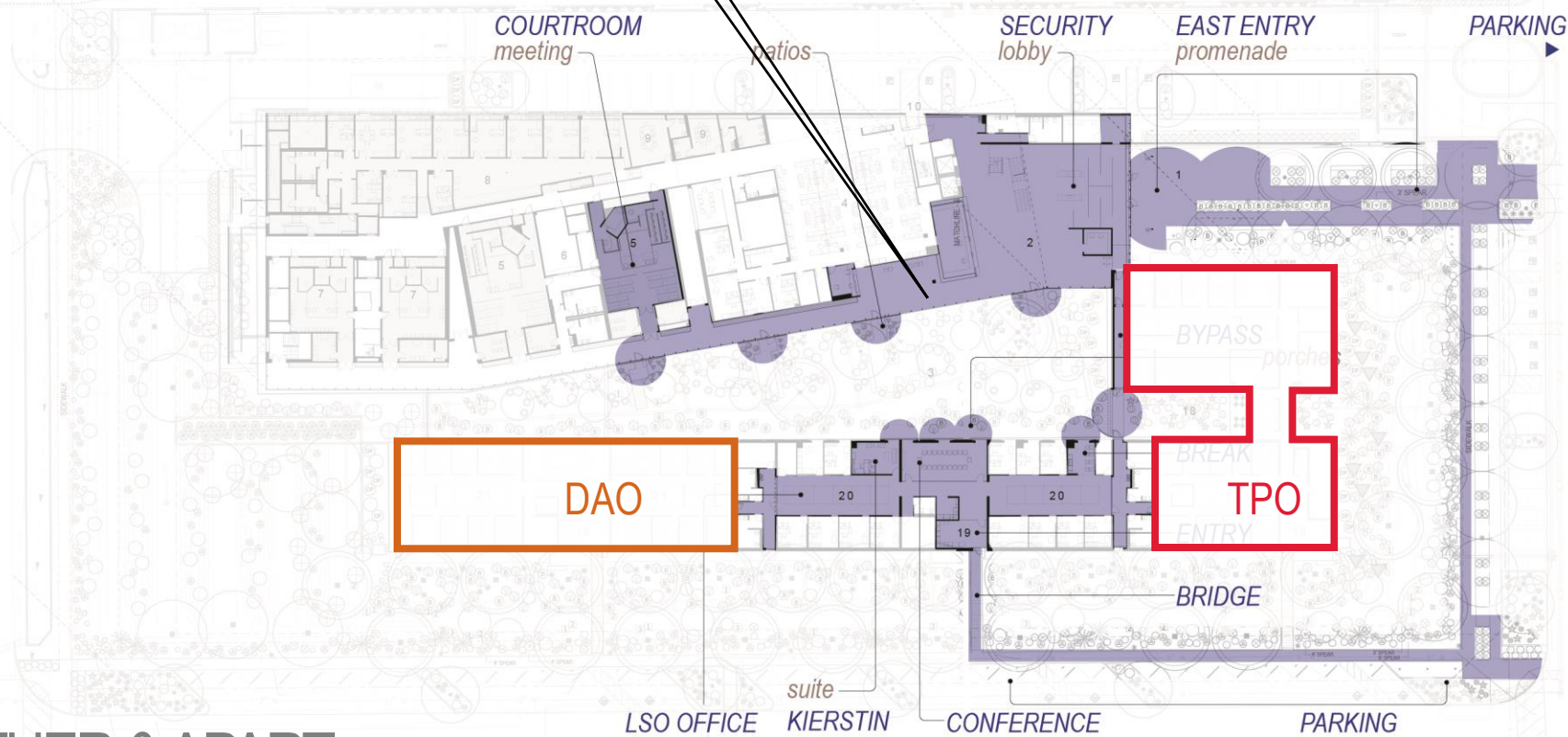


TOGETHER & APART: *public connectivity*

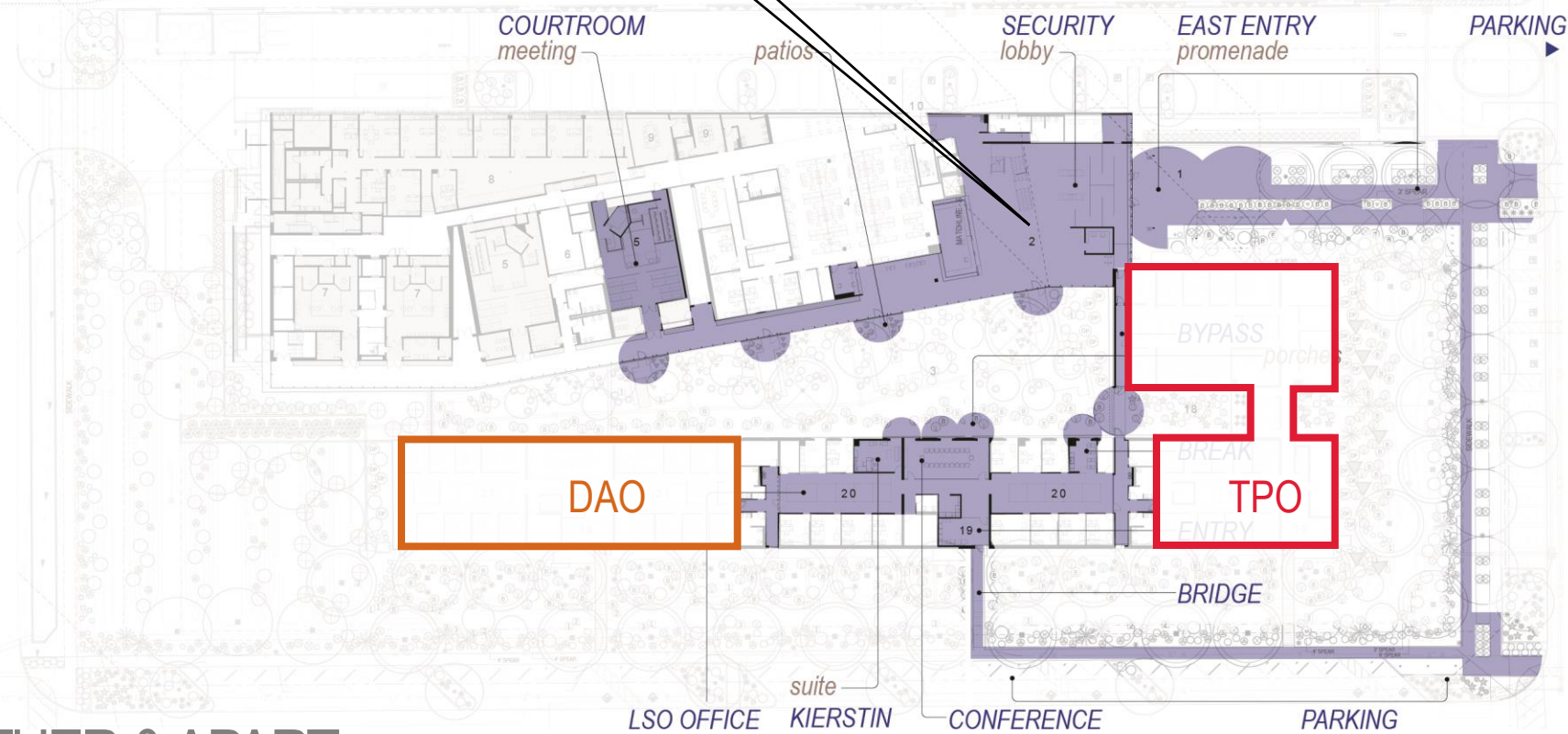




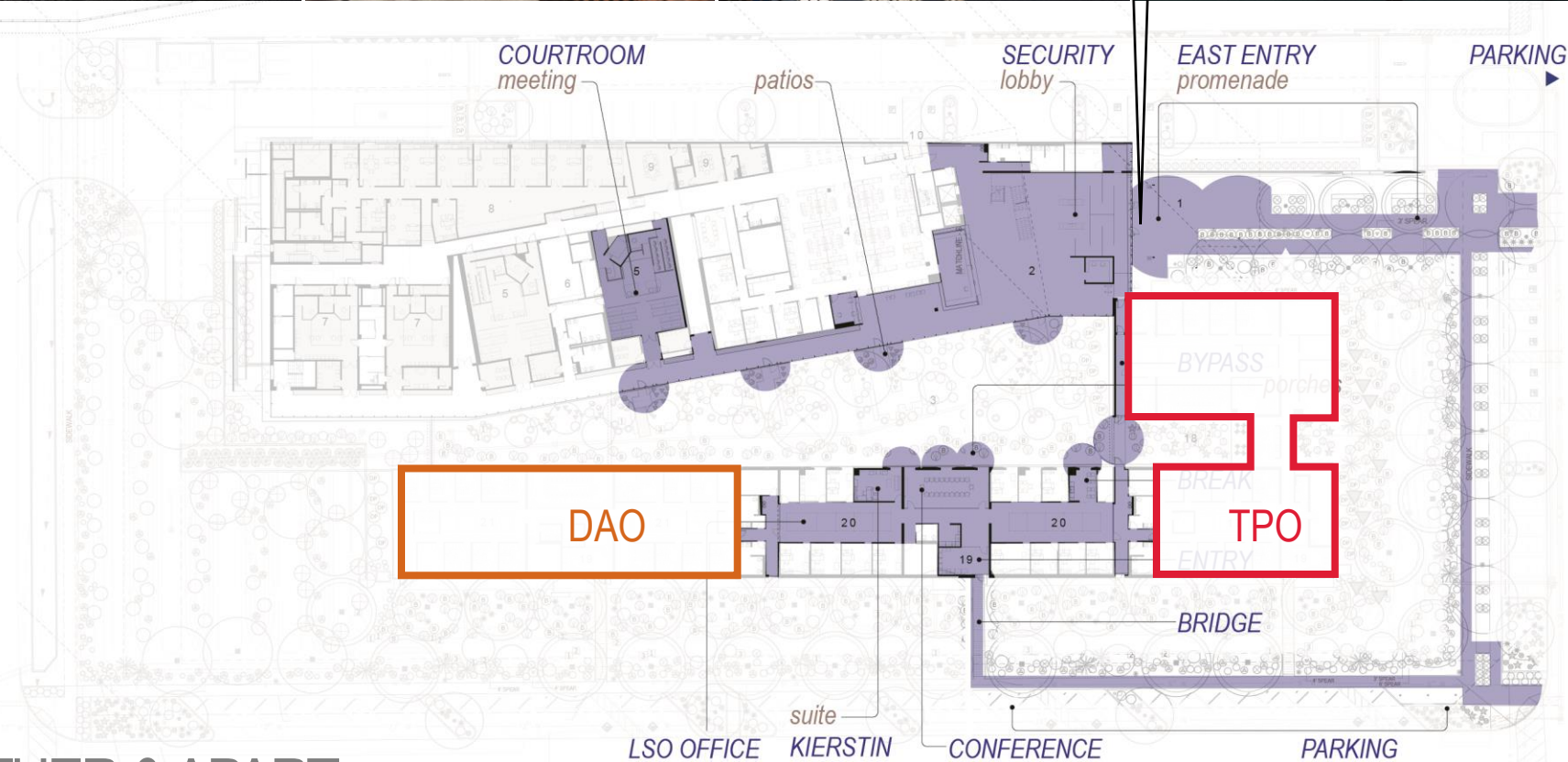
TOGETHER & APART: *outdoor privacy*



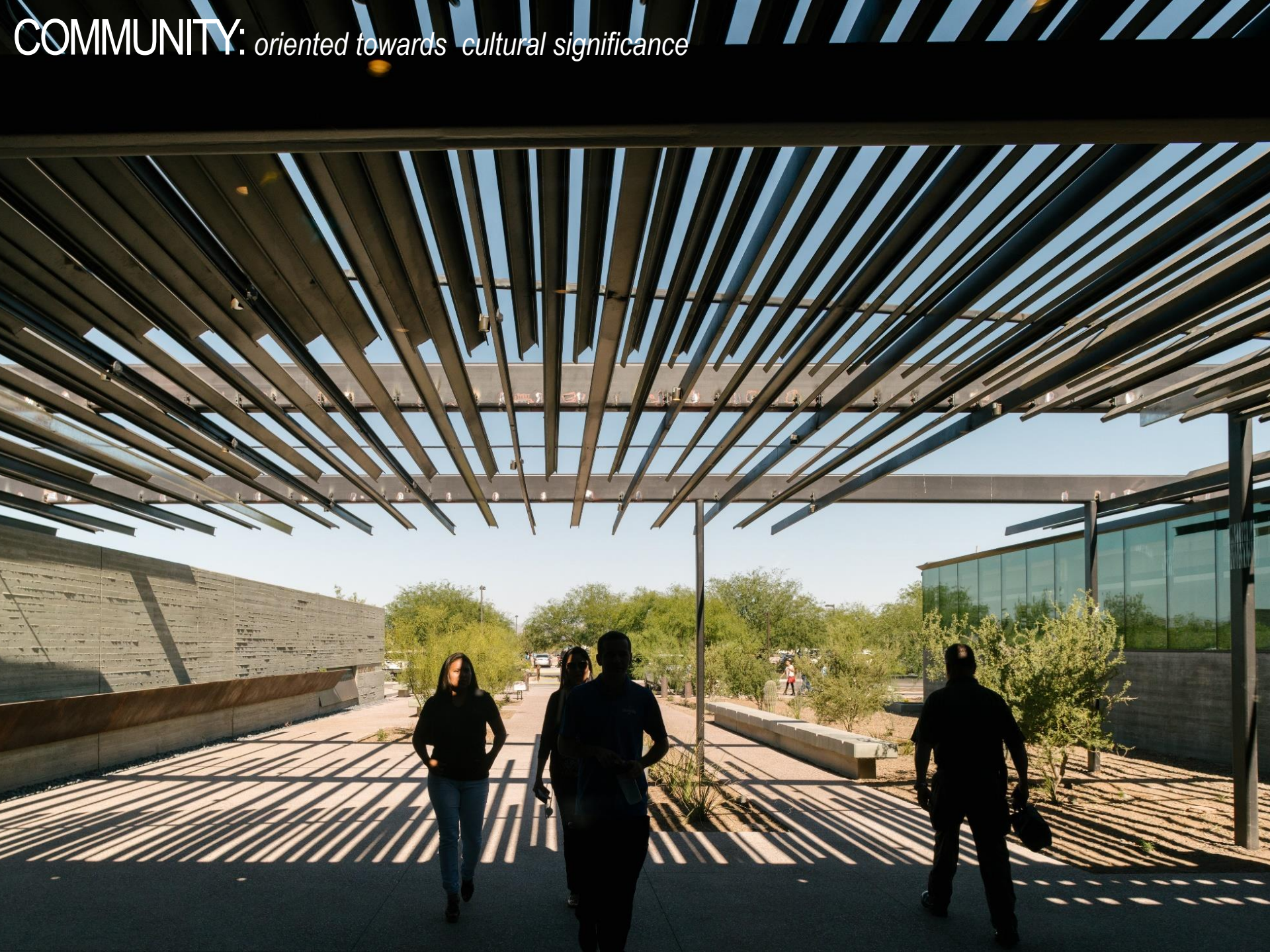
TOGETHER & APART: *distance & separation*



TOGETHER & APART: areas for community building



TOGETHER & APART: *connected to tradition*



COMMUNITY: *oriented towards cultural significance*



COMMUNITY: *improved relationships*

INTEGRATED JUSTICE: *continuity of service*



VICTIM

civic well-being

CUSTOMIZATION

tradition & accommodating varying need

ADVOCACY

victim

FAMILIARITY

thorough history

FAIRNESS

impartiality

TRADITION: *history of landscape*







ADVOCACY: *variety of spatial experience*



CUSTOMIZING: *connect to people and important histories*





OFFICE OF THE
PROSECUTOR



ADVOCACY: *variety of spatial experience – privacy and visibility*



CUSTOMIZABLE: *for comfort and use*



FAMILIARITY: *connecting people and culture*



FAMILIARITY: *connecting people and culture*



ACCESS: *education & community building*

SHAPE

social – spatial dimension

FORMAL
boundaries

UNENCLOSED
expansive

IMPERFECT
non-sterile

OUTDOOR
serendipitous



boundaries

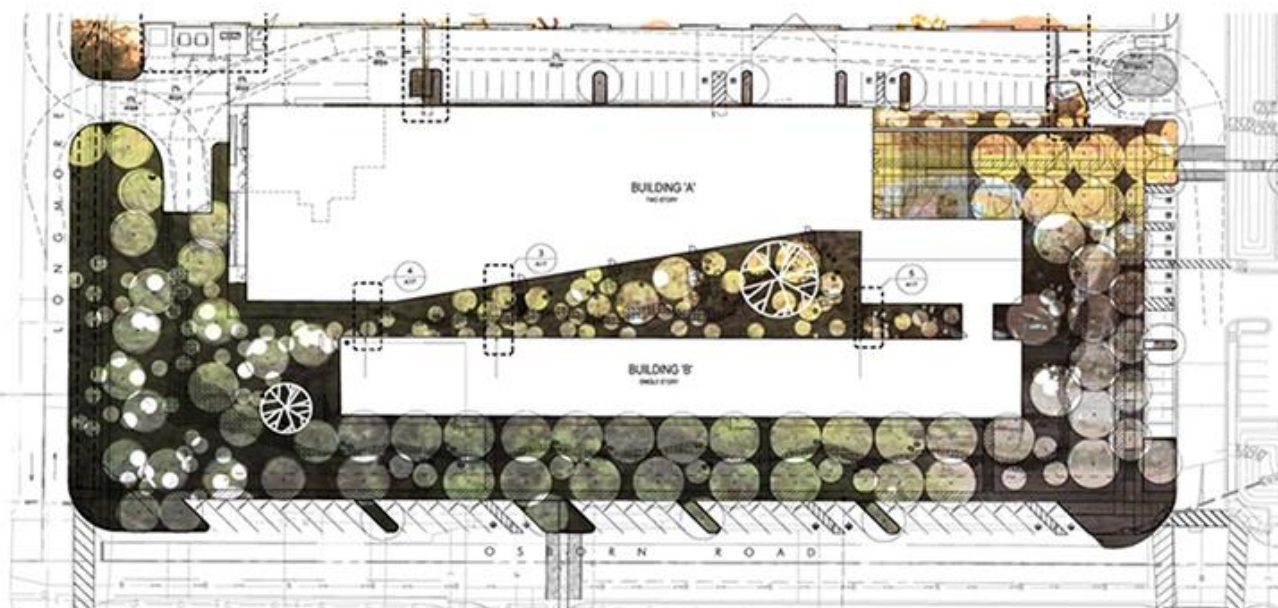


- | | | | | | |
|---|---------------------------|----|--------------------|----|-------------------------|
| 1 | ENTRY | 8 | JUDICIAL CHAMBERS | 15 | APPELLATE COURTROOM |
| 2 | LOBBY | 9 | JURY DELIBERATION | 16 | APPELLATE SUITE |
| 3 | SECURED OUTDOOR COURTYARD | 10 | TO SECURED PARKING | 17 | PROSECUTION |
| 4 | ADMINISTRATION | 11 | PROBATION | 18 | PRACTITIONERS COURTYARD |
| 5 | CIVIL COURTROOM | 12 | JURY ASSEMBLY | 19 | ENTRY LOBBY |
| 6 | BUSINESS CENTER | 13 | CRIMINAL COURTROOM | 20 | LEGAL SERVICES OFFICE |
| 7 | JUVENILE COURTROOM | 14 | IN-CUSTODY DOCK | 21 | TRIBAL DEFENSE |









the Community is dedicated to a life predominately lived outdoors



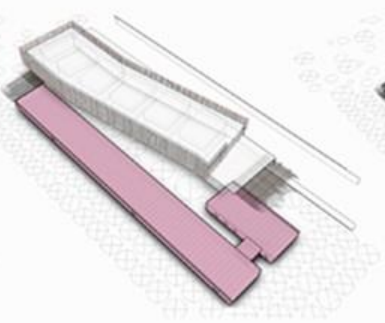
MATERIALS

The primary building materials—glass, weathered steel and concrete—retain the vernacular of austere and durable objects that are often all that remain after prolonged exposure in the desert. The building forms are surrounded by indigenous plants and channels for the rare deluge of rain. The craft of the concrete work and custom rebar scrim demonstrates a deep care for the handmade and provides a glimpse into distinctive tribal sensibilities toward artistry, significance of place and community.



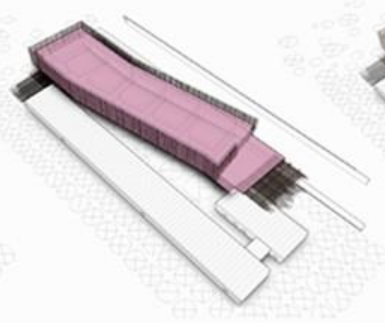
'Function of Landscape':

The landscape is an important utility. A combination of tree canopy and building mass cooperate in order to form the 'secure perimeter', ensuring ensure safe proceedings. The landscape softens and reduces the perception of the fortified edge.



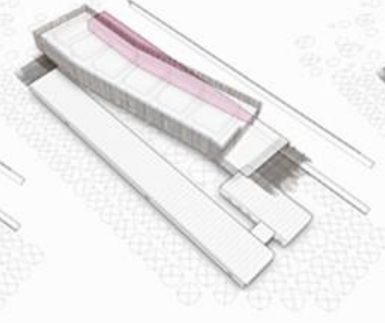
'Earth Mass':

Concrete is used reflecting historic Pima and Maricopa construction methods. The one story mass along Osborn Road is home to the offices of a variety attorneys. [images 1 & 2].



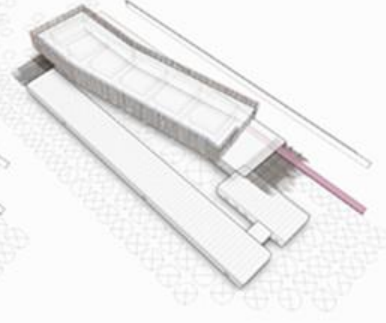
'Vertical Texture':

The two-story courtroom stack is shaded by an aggregate of small vertical elements brought together to form a sunscreen. Reminiscent of traditional ocotillo fencing. [image 3].



'Horizontal Texture':

Similar to traditional dwellings on the community [image 5], the material is arranged in a horizontal texture layered to create a variation of depth and shadow. [image 6]

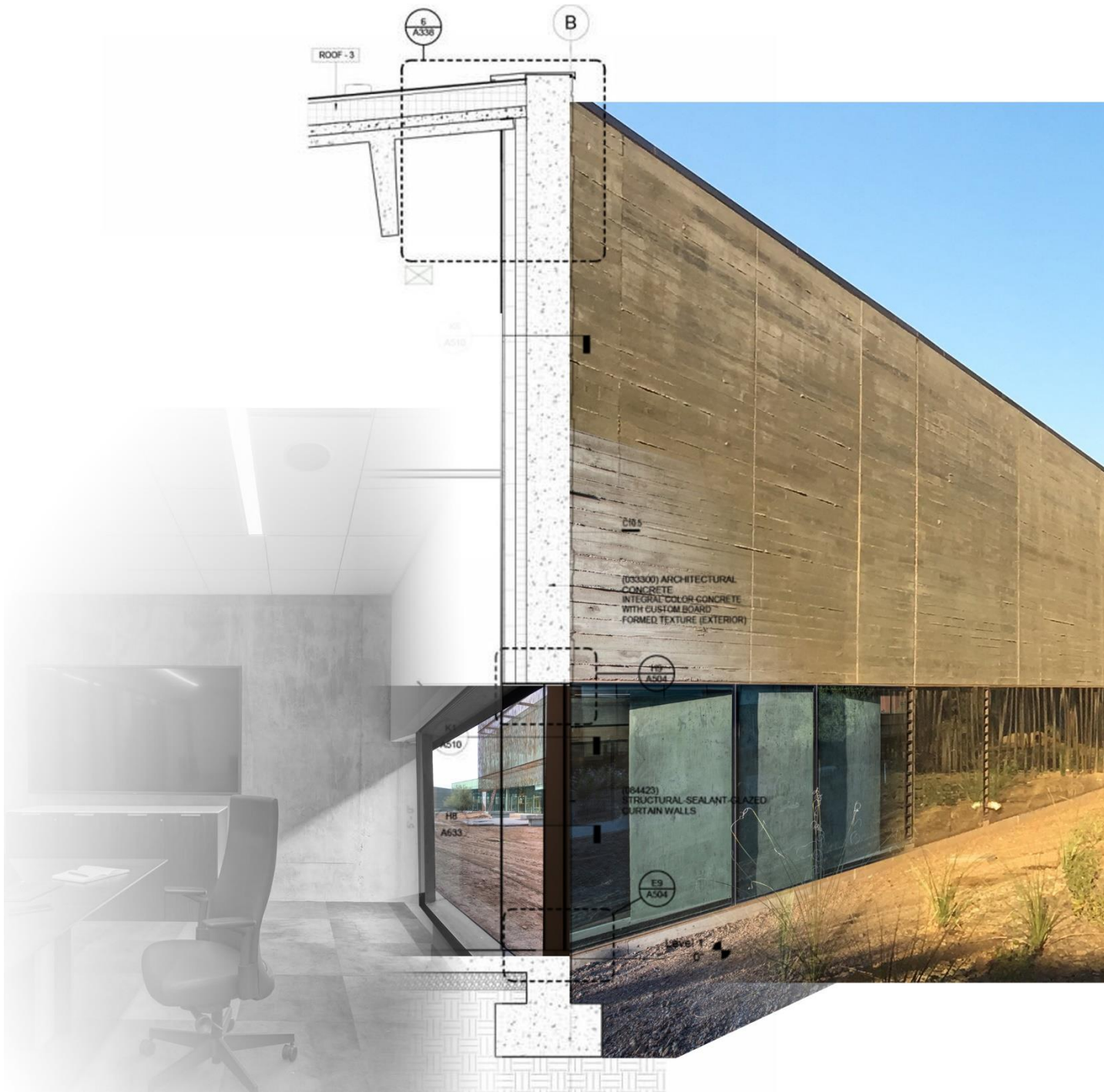


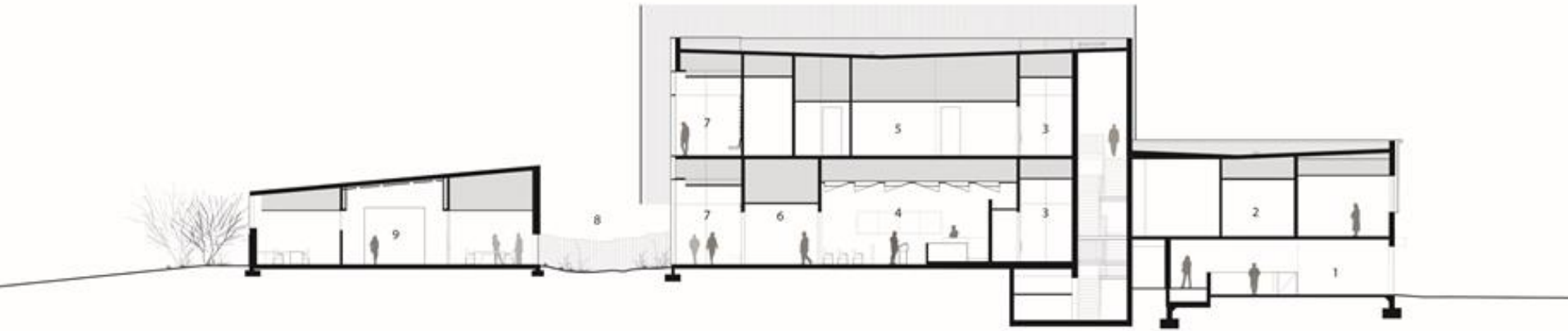
'Community Wall':

The community wall at the building's entrance is an opportunity to create significant 'markings' that speak about the values of the community as well as the role of the Justice Center plays in upholding them. [image 6].



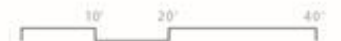






SECTION transverse

- | | | | |
|---|------------------------|---|---------------------------|
| 1 | SALLY PORT | 6 | MEETING |
| 2 | JUDICIAL CHAMBERS | 7 | PUBLIC CORRIDOR |
| 3 | SECURED STAFF CORRIDOR | 8 | SECURED OUTDOOR COURTYARD |
| 4 | JUVENILE COURTROOM | 9 | PRACTITIONERS BUILDING |
| 5 | APPELLATE CHAMBERS | | |

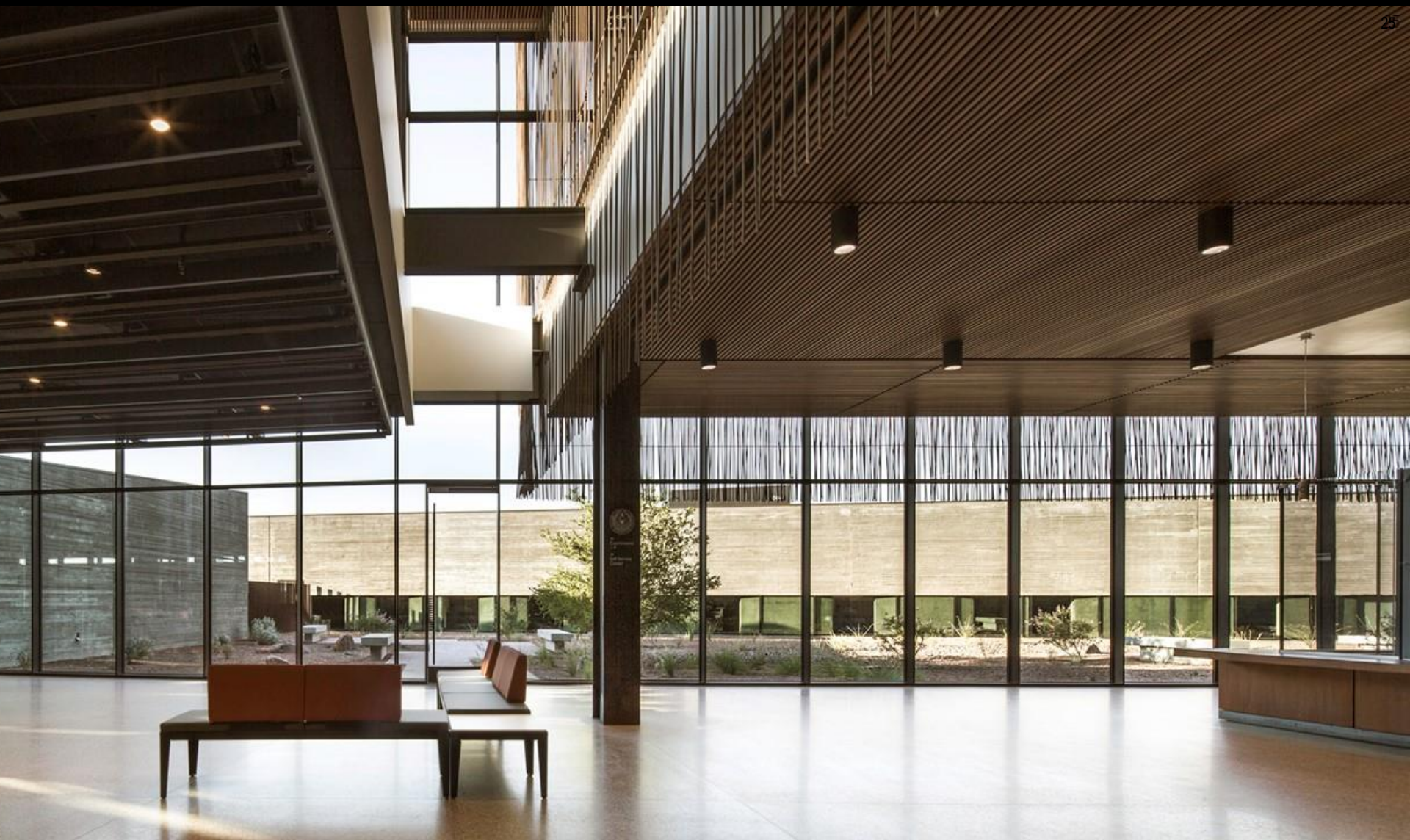




betounline.ch

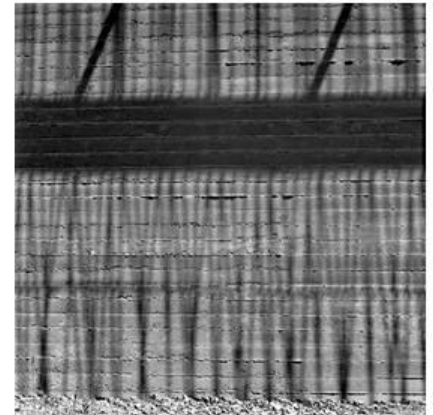
S



























ROUNDTABLE

intersections

Q1:

What's the relationship between tribal law, tribal sovereignty, & national justice standards?

What makes the court distinctly tribal?

Q2:

Distinguish between urban & rural influence – is there a specifically urban influence on the tribal court?

Q3:

What does 'integrated justice' mean?

Q4:

Has the new building had an effect on Community re-entry & integration?

