

CHALLENGING THE STATUS QUO

SESSION # AAJ154CD1

A New Prescription Mental Illness & County Jails



2015 AIA ACADEMY OF ARCHITECTURE
FOR JUSTICE CONFERENCE

MIAMI
NOVEMBER 18-21, 2015

NOVEMBER 19, 2015 | 9:45 AM

Copyright Notice

This presentation is protected by US and International Copyright laws. Reproduction, distribution, display and use of the presentation without written permission of the speaker is prohibited.

© The American Institute of Architects 2015

AIA/CES Compliance Statement

“AIA Knowledge” is a Registered Provider with The American Institute of Architects Continuing Education Systems (AIA/CES). Credit(s) earned on completion of this program will be reported to AIA/CES for AIA members. Certificates of Completion for both AIA members and non-AIA members are available upon request.

This program is registered with AIA/CES for continuing professional education. As such, it does not include content that may be deemed or construed to be an approval or endorsement by the AIA of any material of construction or any method or manner of handling, using, distributing, or dealing in any material or product.

Questions related to specific materials, methods, and services will be addressed at the conclusion of this presentation.

AIA/CES Reporting Details

All attendees will be eligible to receive AIA continuing education for attending this course by completing the electronic form sent via email after the conference.

Continuing education questions can be directed to aaaj@aia.org.

Course Description

Douglas County, Kansas is looking for a progressive solution to the issues of mental health in their detention facility. The goal of simply holding people securely often leads to the segregation of vulnerable individuals into even more aggravating environments. By exploring alternatives to incarceration (including court diversion processes), the creation of a mental health crisis center, methods of separation, and therapeutic secure environments for the treatment of special needs in detention, the underlying reasons for recurring arrests and bookings can be understood and addressed. Douglas County intends to actively shape the new standard for the care of special needs populations.

The answer lies in a community-wide approach, where the fear of talking about mental illness is overcome and the focus shifts to providing proper care. This win-win situation can reduce the number of people who remain jailed for socioeconomic or mental health reasons and can keep those who remain in detention from experiencing harm due to a lack of options.

Learning Objectives

1. Participants will be able to differentiate the existing model from the evolving standards of care for special needs populations in secure environments.
2. Participants will be able to recognize existing & new methods for diverting non-violent individuals with mental health issues from jail.
3. Participants will be able to explain how crisis centers can effectively lead to jail population reduction.
4. Participants will be able to identify progressive solutions for secure mental health therapeutic housing.

Speakers



Margaret Severson
Corrections Mental Health Consultant

Margaret began her corrections career in 1983, serving as the Director of Mental Health Services for the El Paso, CO County Jail for 8 years. As a Professor at the University of Kansas School of Social Welfare, Margaret directs research exploring the treatment of incarcerated persons with mental illnesses.



Craig Weinaug
Douglas County, KS Administrator

Since 1992, Craig's mission has been to provide for the safety and well being of the citizens of Douglas County. He is a past president of the Kansas City/County Management Association and the 2011 recipient of the Edwin O. Stene Award for Managerial Excellence from Kansas University.



Dan Rowe
Principal, Architect

Dan Rowe serves as the president of Treanor Architects and leads the Treanor Justice team. He has dedicated his 30-year architectural career to the programming and design of jails, juvenile and court facilities.



Jeff Lane
Associate Principal

Since joining Treanor in 1999, Jeff has been a lead member of the justice team. Along with his experience designing jails and sheriff's departments, he has studied courtroom aspects to ensure accessibility and functionality of all components.



Bobbie Huskey
Needs Assessment Planner

Bobbie is a trained social work clinician, public policy analyst and strategic planner with 38 years of experience in corrections as a criminal justice consultant.

Douglas County Story

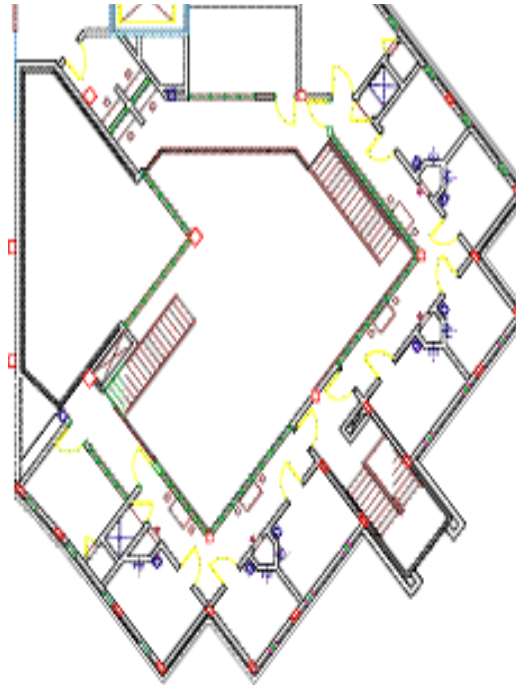


Douglas County Jail

Needs Assessment – Classification Issues

Women

- 1999: 10% of population
- 2014: 20% of population
- All classification pod
- No separation
- Last 12 months: spending more than \$330,000 on housing inmates out of county

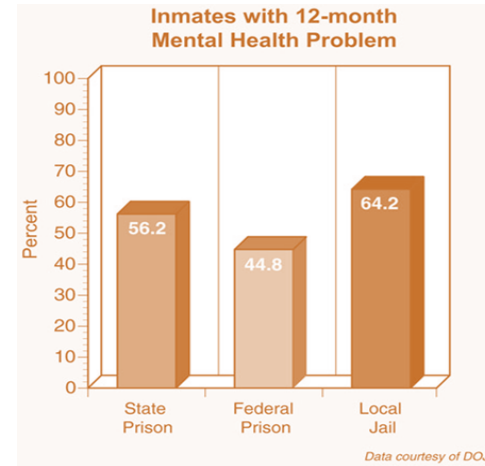


Douglas County Jail

Needs Assessment – Classification Issues

Special Needs/Mental Health

- 14 Bed Current Capacity
- Need 28 beds
- Need Therapeutic Healthcare Environment



Douglas County Jail

We are going to do this the right way.

Serious Mentally Ill - Definition

Participants who, at any time during a given year, had a **diagnosable mental, behavior or emotional disorder** that resulted in functional impairment which substantially **interfered with or limited one or more major life activities.**

Research Methodology

Data gathered on all inmates booked during April, July, October 2014 & January 2015

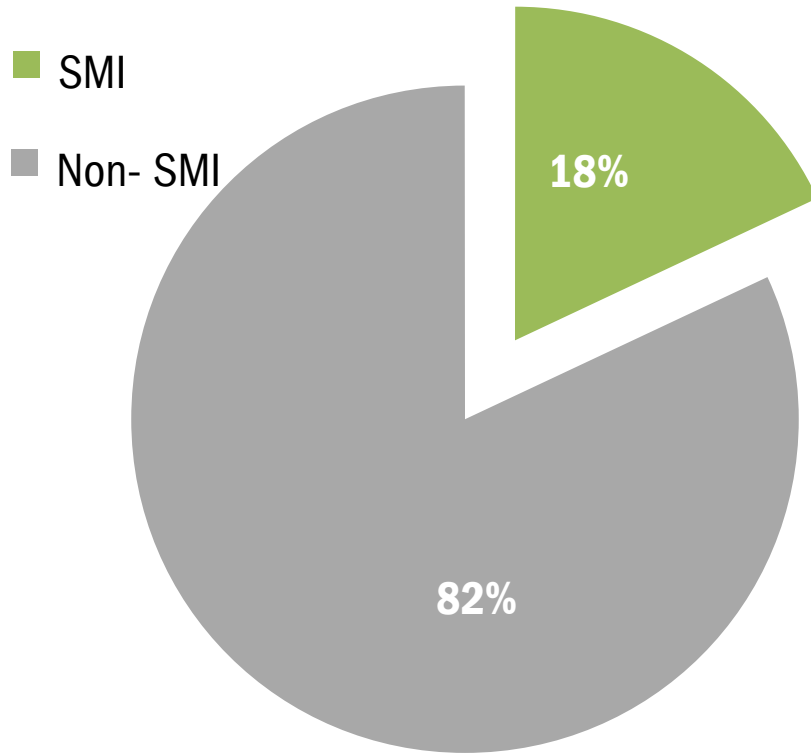
- 1,971 bookings in these 4 months
- Represents 33.3% of total estimated bookings for a 12 month period

Data gathered by Douglas County Jail staff & Bert Nash CMC staff on 12 variables

- Variables included: legal status, age, sex, race, charged with a violent felony/misdemeanor, charged with an escape charge/history of escape, Douglas County resident, found or suspected of having a serious mental illness, prior mental health treatment, prior psychiatric hospitalizations, have co-occurring substance use disorder, length of stay in jail.

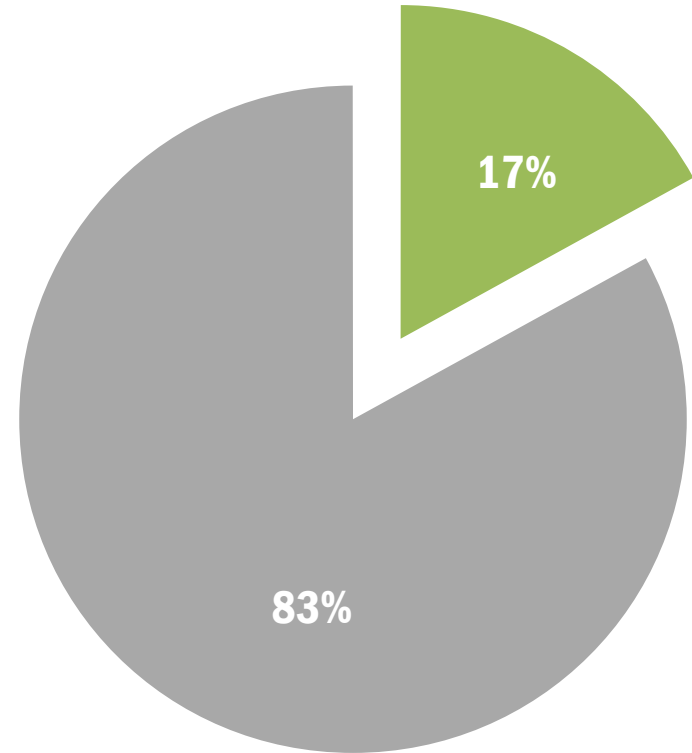
Serious Mentally Ill

As a Percent of Total Jail Bookings



Douglas County, KS

N=493

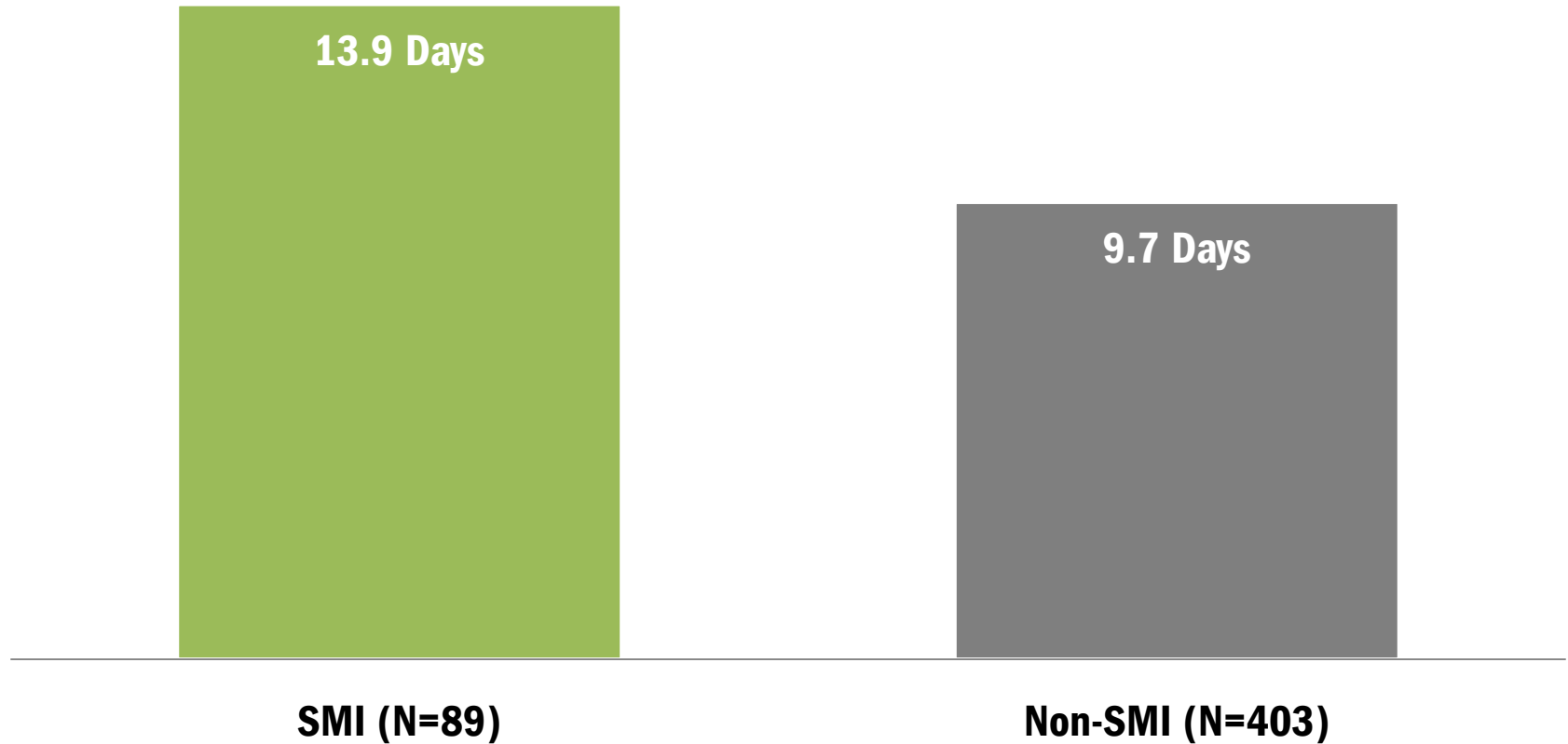


Five Jails in Maryland & New York

N=822

Serious Mentally Ill

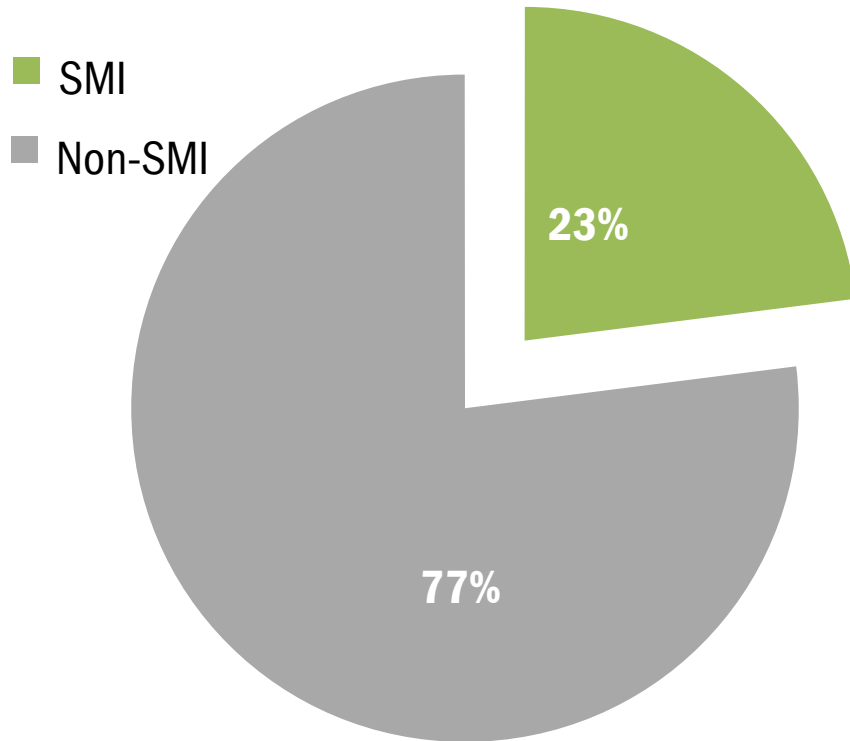
Average Length of Stay in Jail



Sources: Douglas County Jail. 2015; Note - average LOS taken for April, July & October 2014

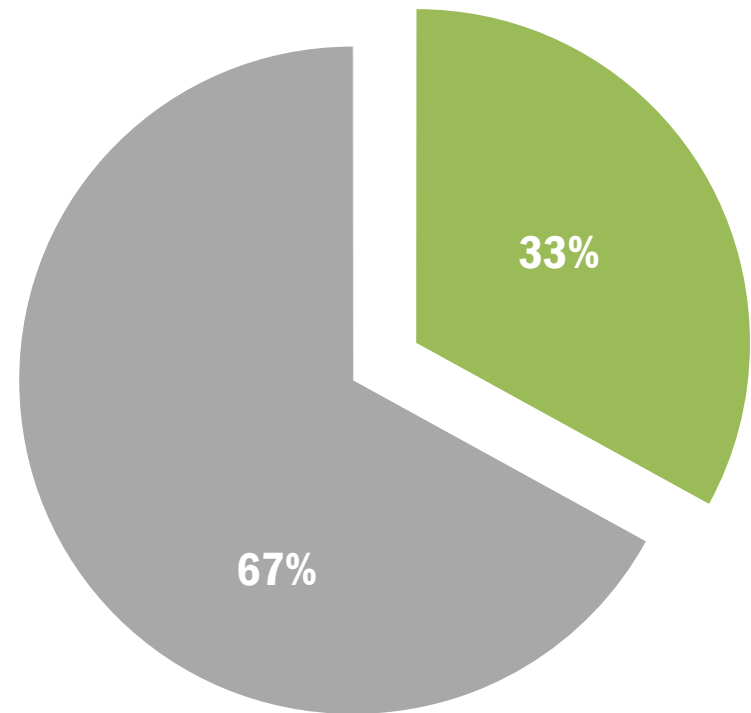
Serious Mentally Ill

Average Number SMI Housed in Jail by Sex



Males

N=135



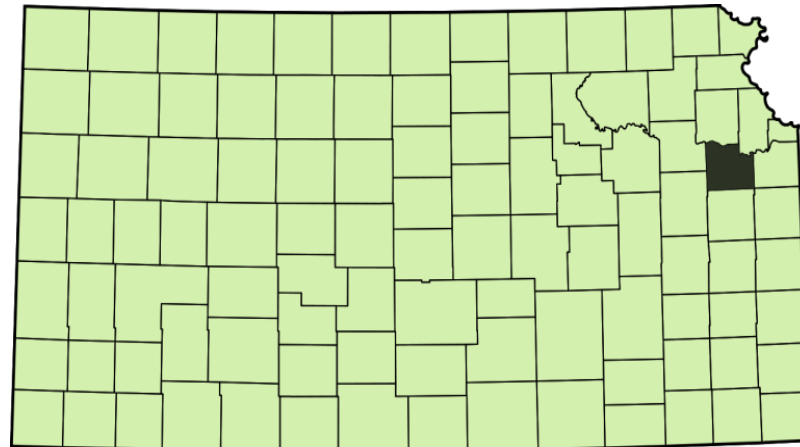
Females

N=33

SMI Characteristics

Douglas County Jail

- 8 of 10 awaiting trial
- 35 years — Average age
- 78% White, 17% Black, 5% AI/AN
- 87.4% are Douglas County residents
- 99.4% not charged with escape charge/history of escape
- ~71% had prior psychiatric hospitalizations (8% more males)



SMI Characteristics

SMI Characteristics	Douglas County	National Jail Population
Not charged with violent felony/misdemeanor offense	80.1%	56% - 70%
Received prior mental health treatment	100%	9% males & 23% females
Had a co-occurring substance use disorder	~77%	38% - 76%
Booked more than one time	16.8% (12.3% non-SMI)	26%-54% (3+ incarcerations)

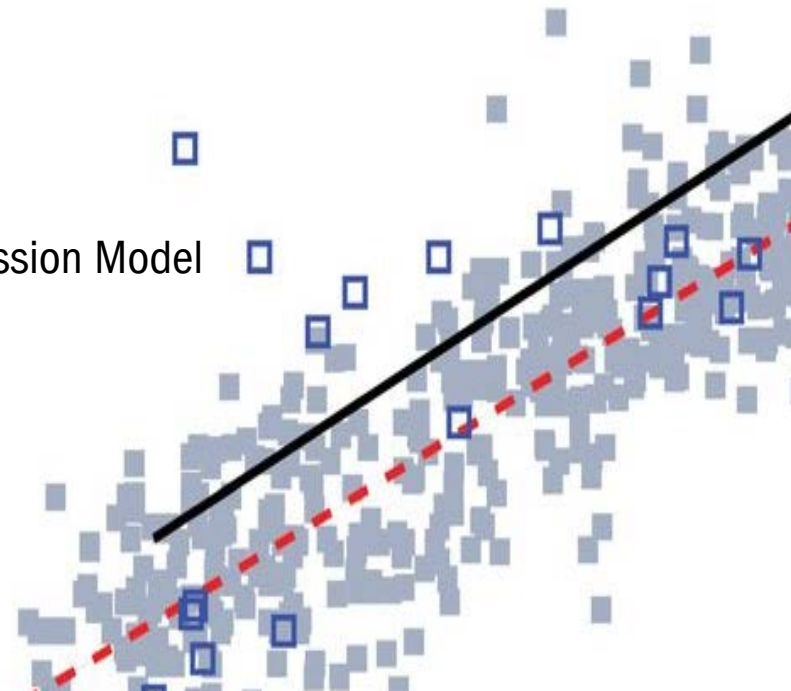
Projections Methodology

Data Driving the Projections

- 12.8% met screening criteria for SMI
- 20% (of SMI accepted at screening) excluded during assessment process/opt out
- SMI offenders participate for an average of 90 days in Specialty Court
- Assumes that each SMI admitted to the Specialty Court is counted only once in a given month to avoid double counting
- SMI inmates stay average of 13.9 days

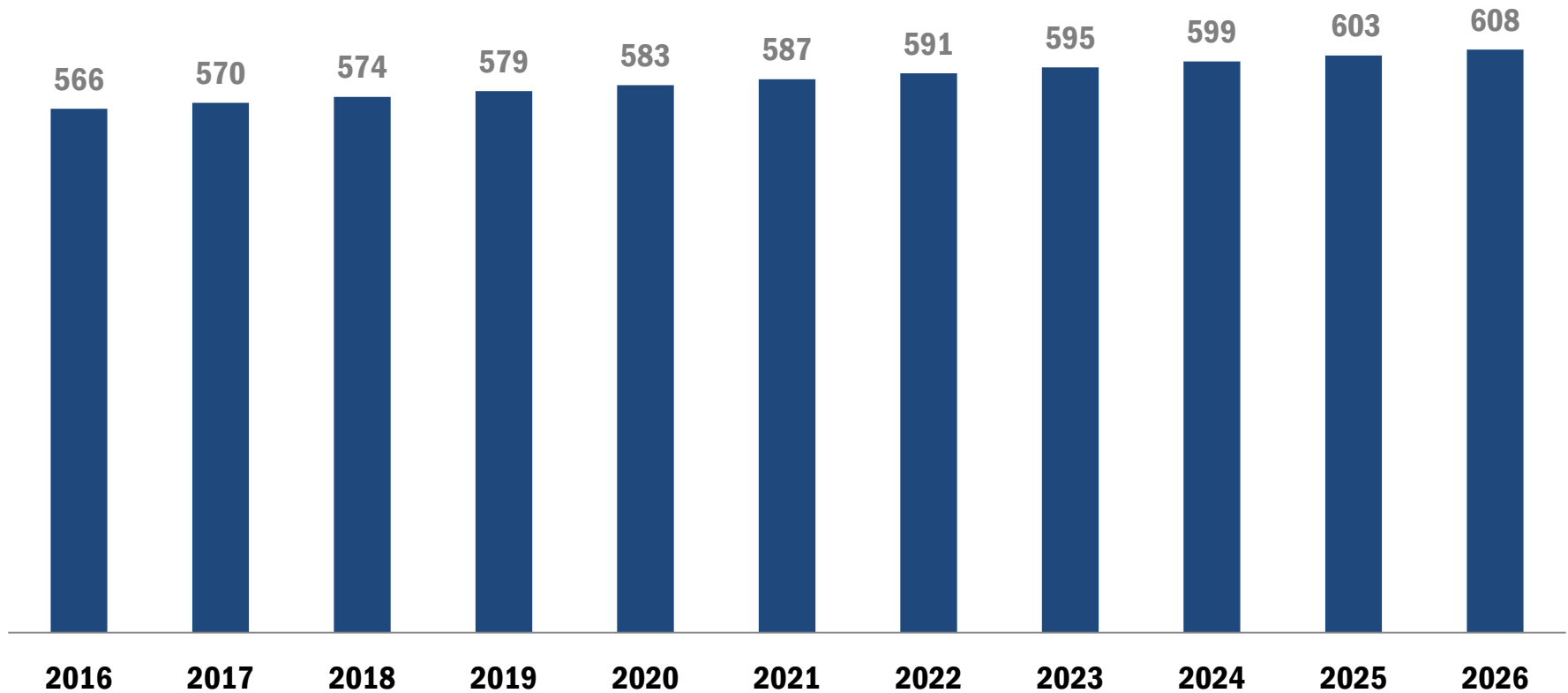
Findings

- Nationally accepted Ordinary Least Squares Regression Model



Douglas County, KS

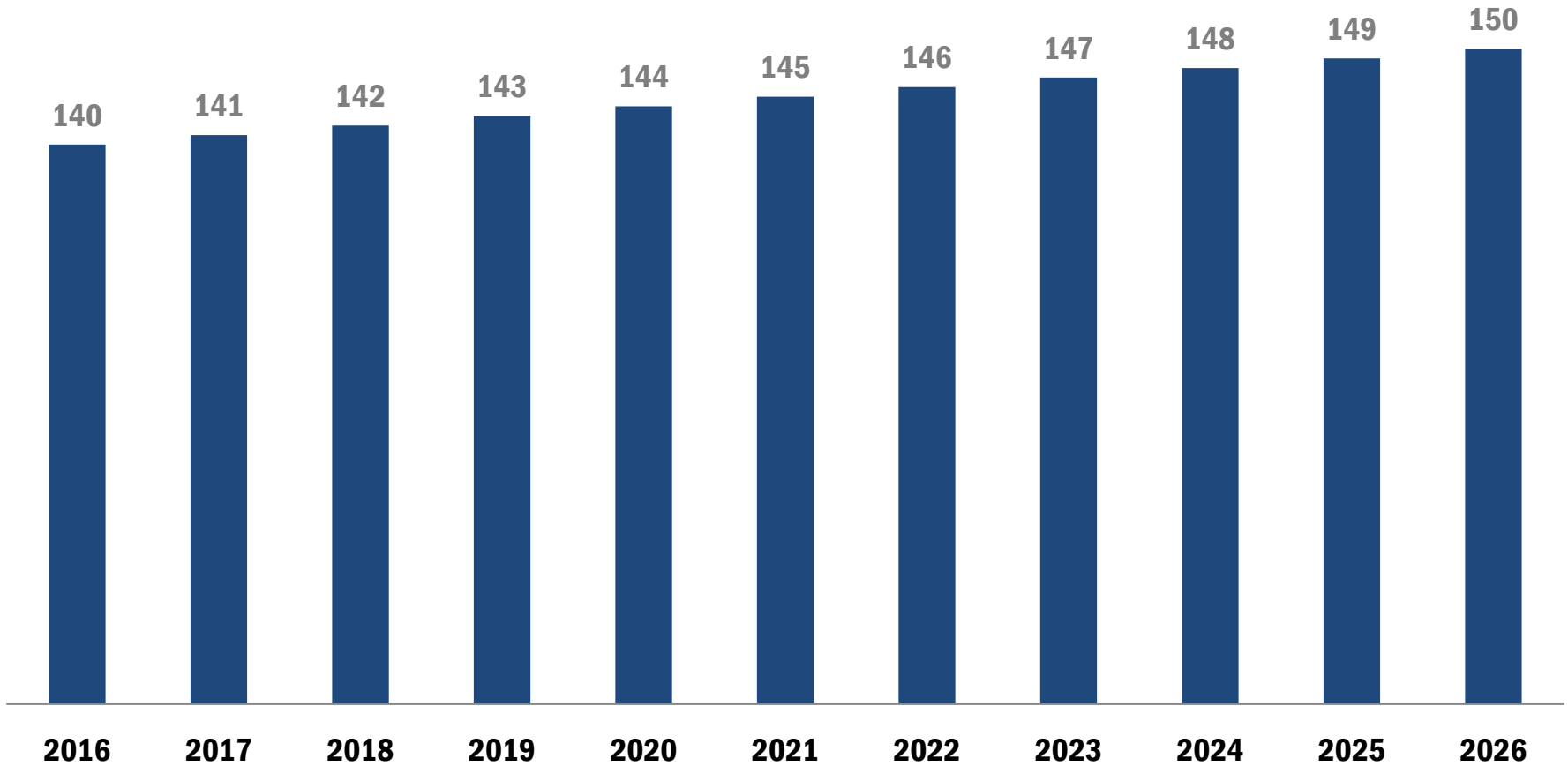
Projected Number of SMI Individuals Eligible for Alternatives to Jail Annually 2016-2026



Source: Huskey & Associates. Represents jail bookings that meet screening criteria, excludes portion of individuals during assessment and counts SMI individuals admitted to the Specialty Court only once in a given month to avoid double counting.

Douglas County, KS

Projected Average Daily Number of People with SMI in Alternatives to Jail Program 2016-2026

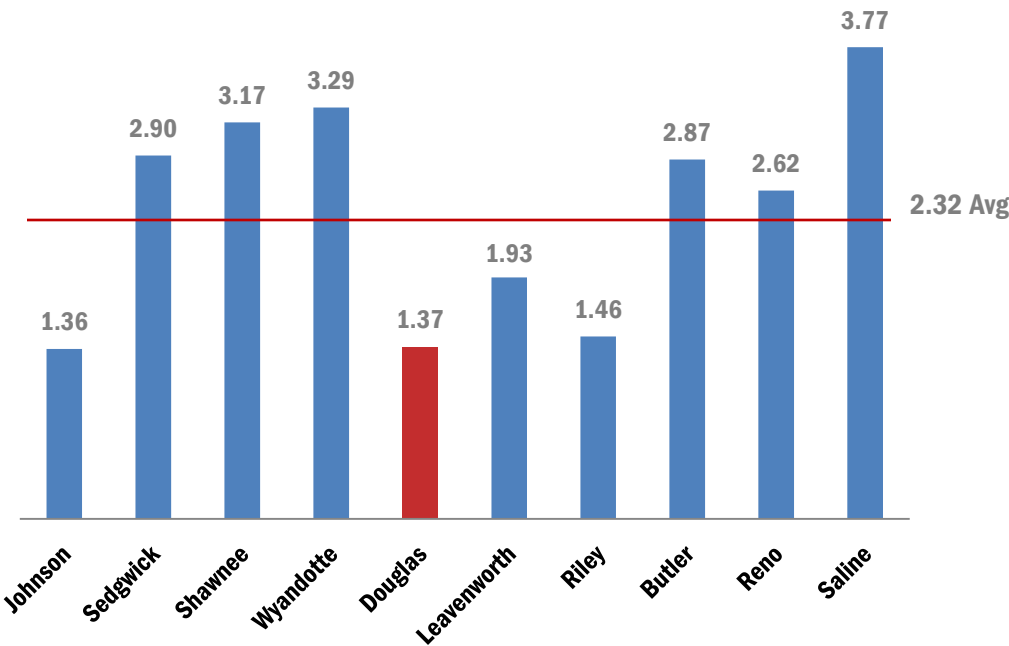


Source: Huskey & Associates. Assumes length of stay of 90 days.

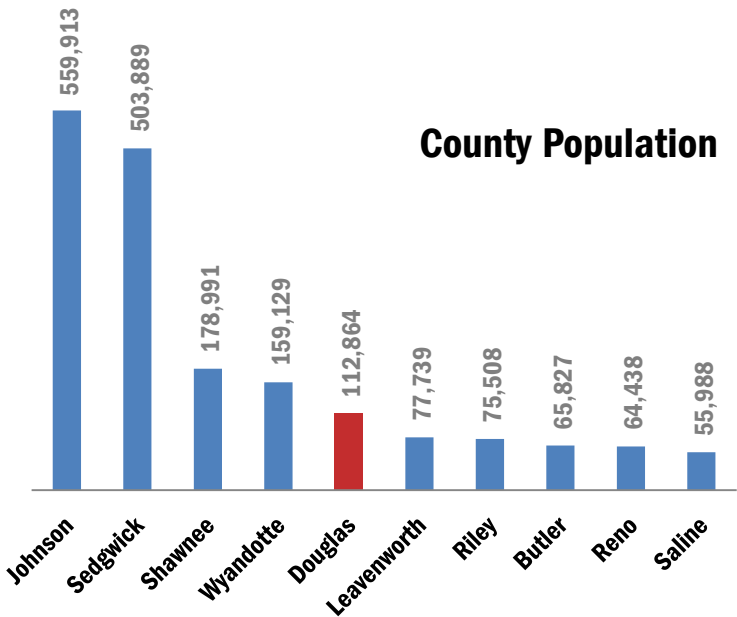
Douglas County Jail

Needs Assessment – Benchmarking Summer 2014

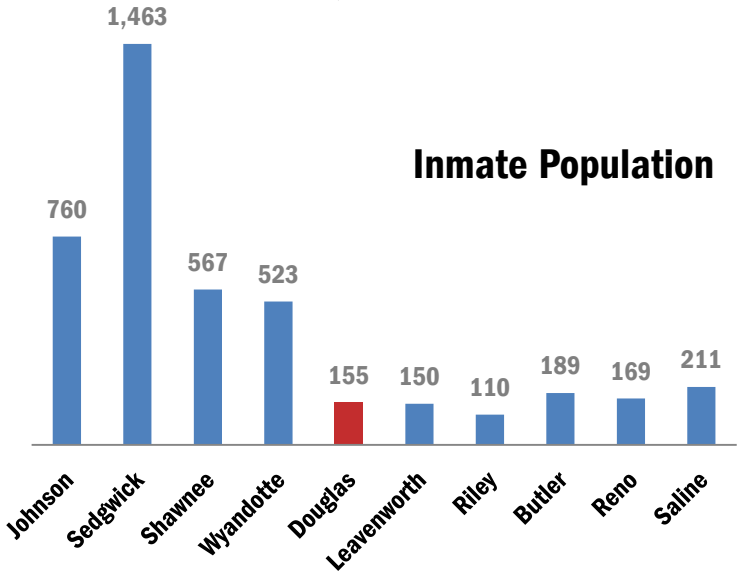
Inmates per 1000 Population



County Population



Inmate Population



Screening Criteria

for Potential Mental Health Court

- 1) Any pre-trial defendant or convicted offender age 18 and older
- 2) Must be found or suspected of having a serious mental illness (SMI)
- 3) Not charged/convicted with a violent felony or violent misdemeanor offense
- 4) Not charged/convicted with an escape charge and does not have a history of escape
- 5) Resident in Douglas County (does not exclude homeless) & within the Court's jurisdiction



Screening Criteria

Number of Douglas County Inmates Who Met Criteria

Male (N=366)		Female (N=127)		Total (N=493)	
N	% of Total	N	% of Total	N	% of Total
41	11.2%	22	17.3%	63	12.8%

Crisis Centers & Mental Health Court



Natural Light, Courtyards & Views



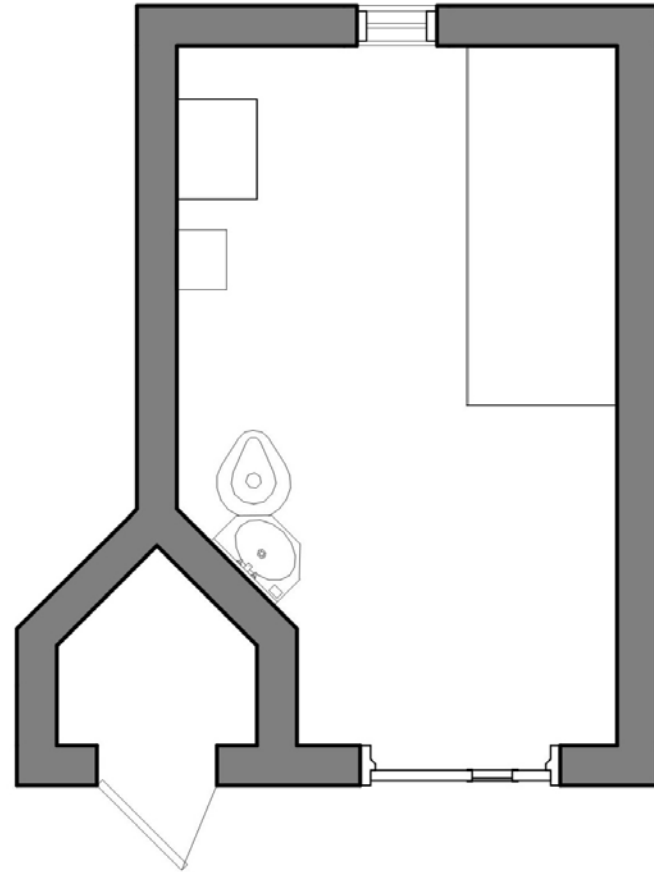
Therapeutic Environments



A New Prescription

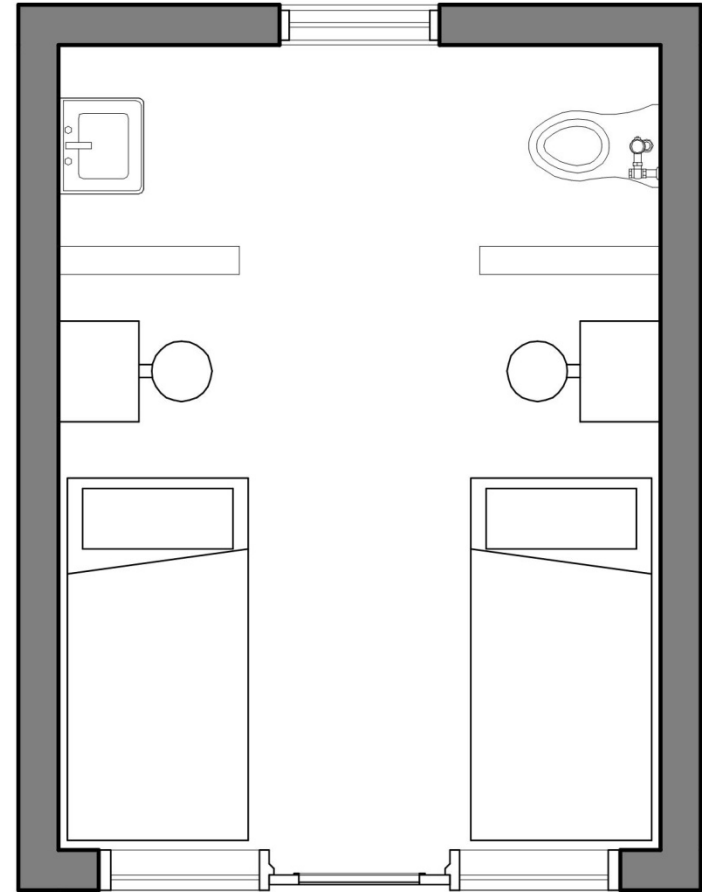
Design Notion

Traditional Cell



Design Notion

Room Concept

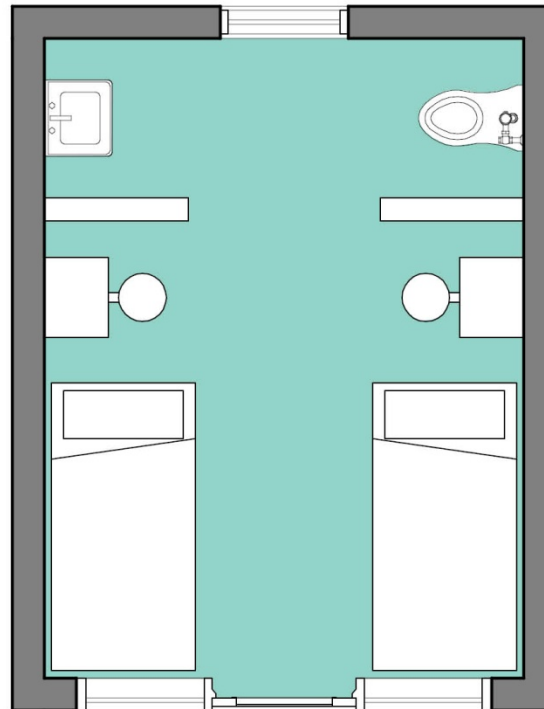


Design Notion

Daylighting and Views

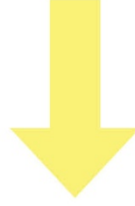


CHASE

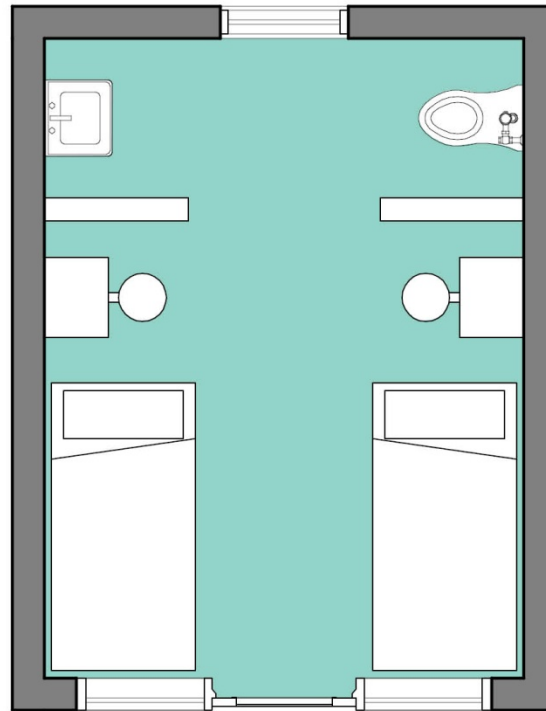


Design Notion

Daylighting and Views

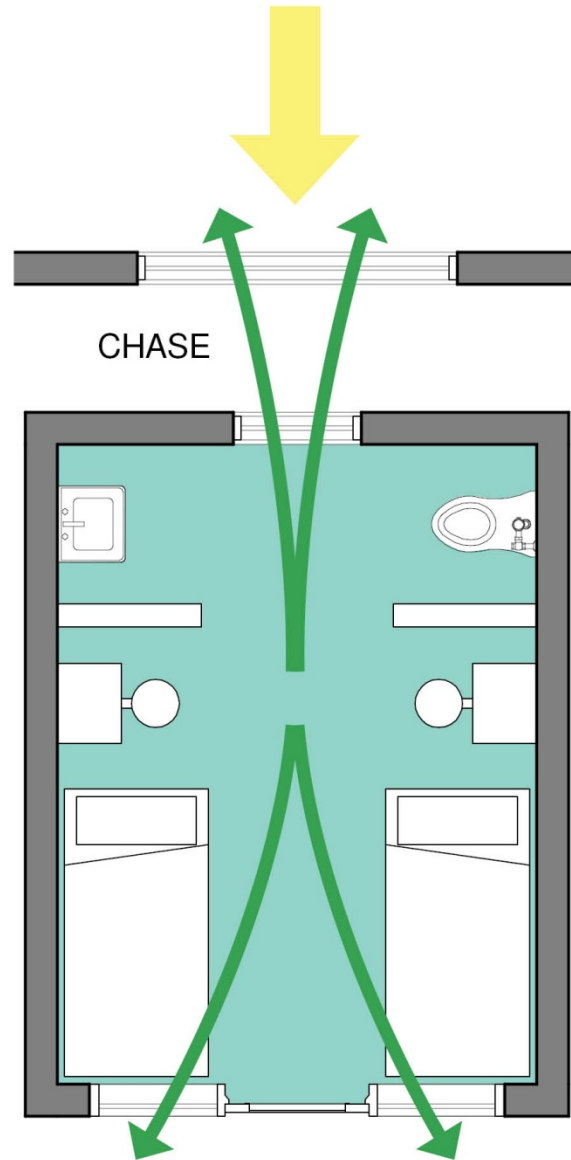


CHASE



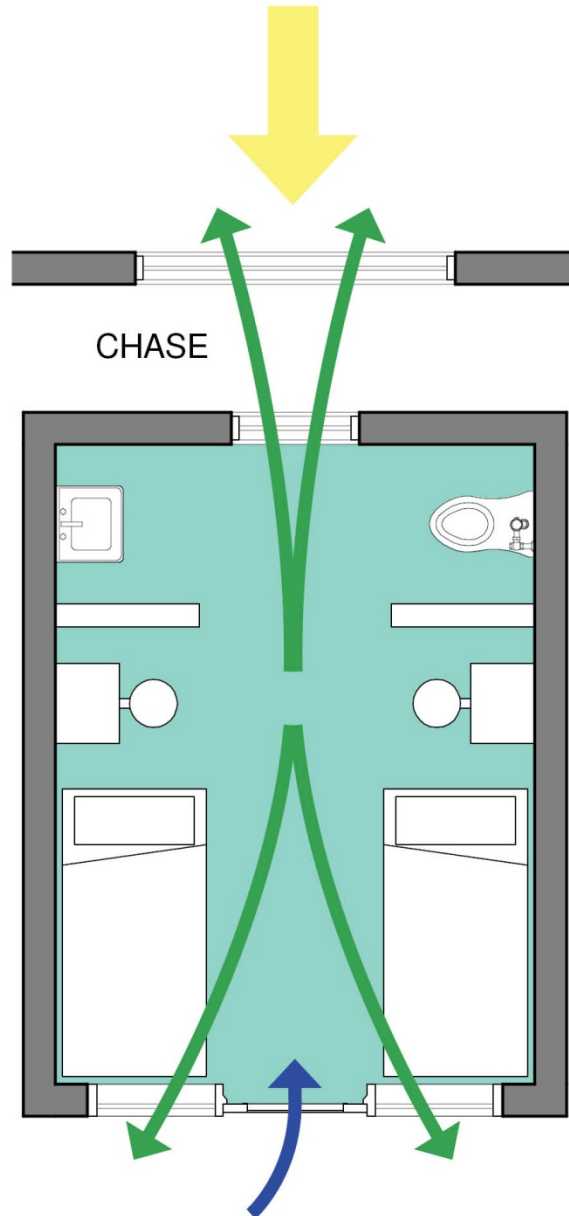
Design Notion

Daylighting and Views



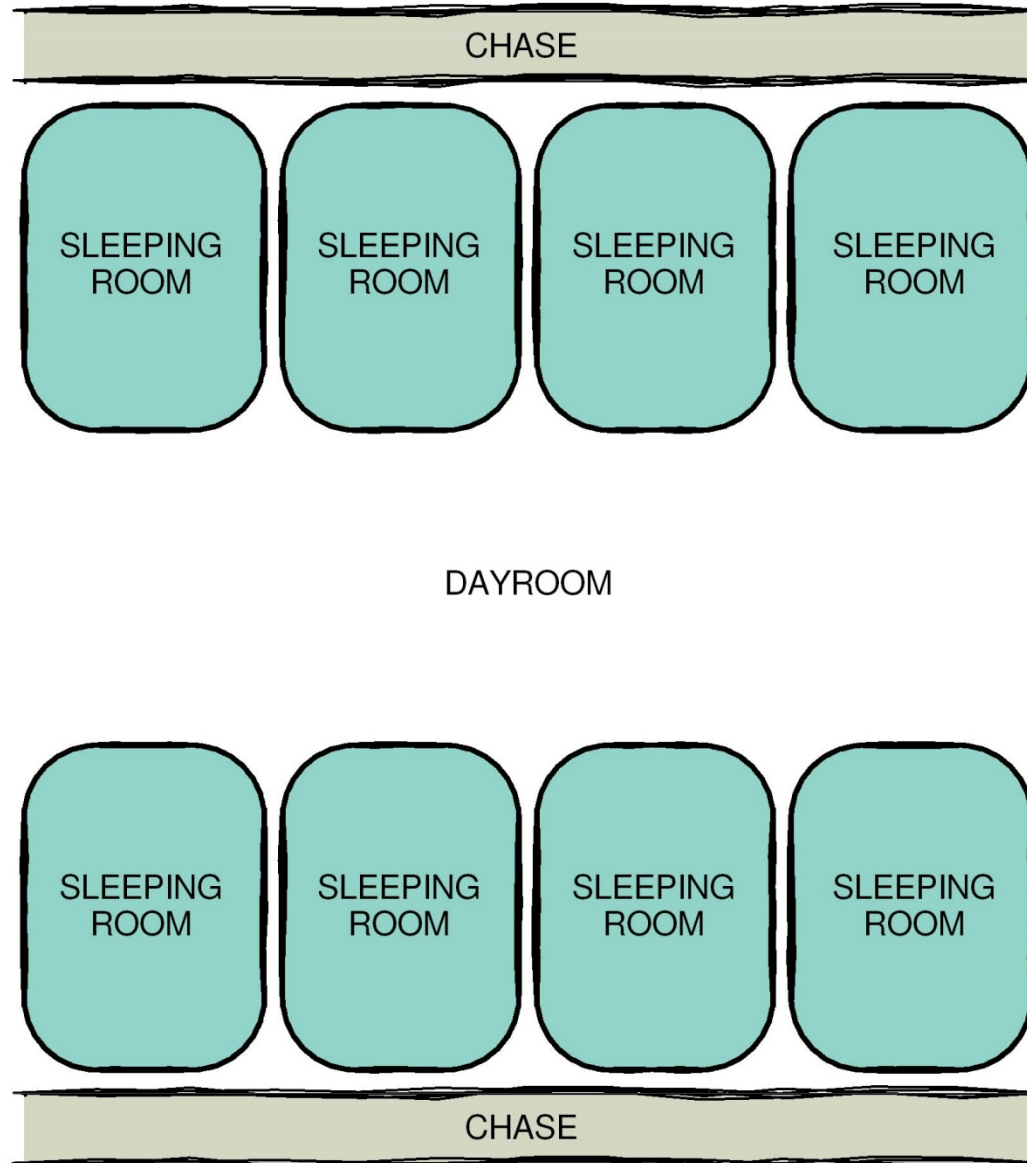
Design Notion

Daylighting and Views



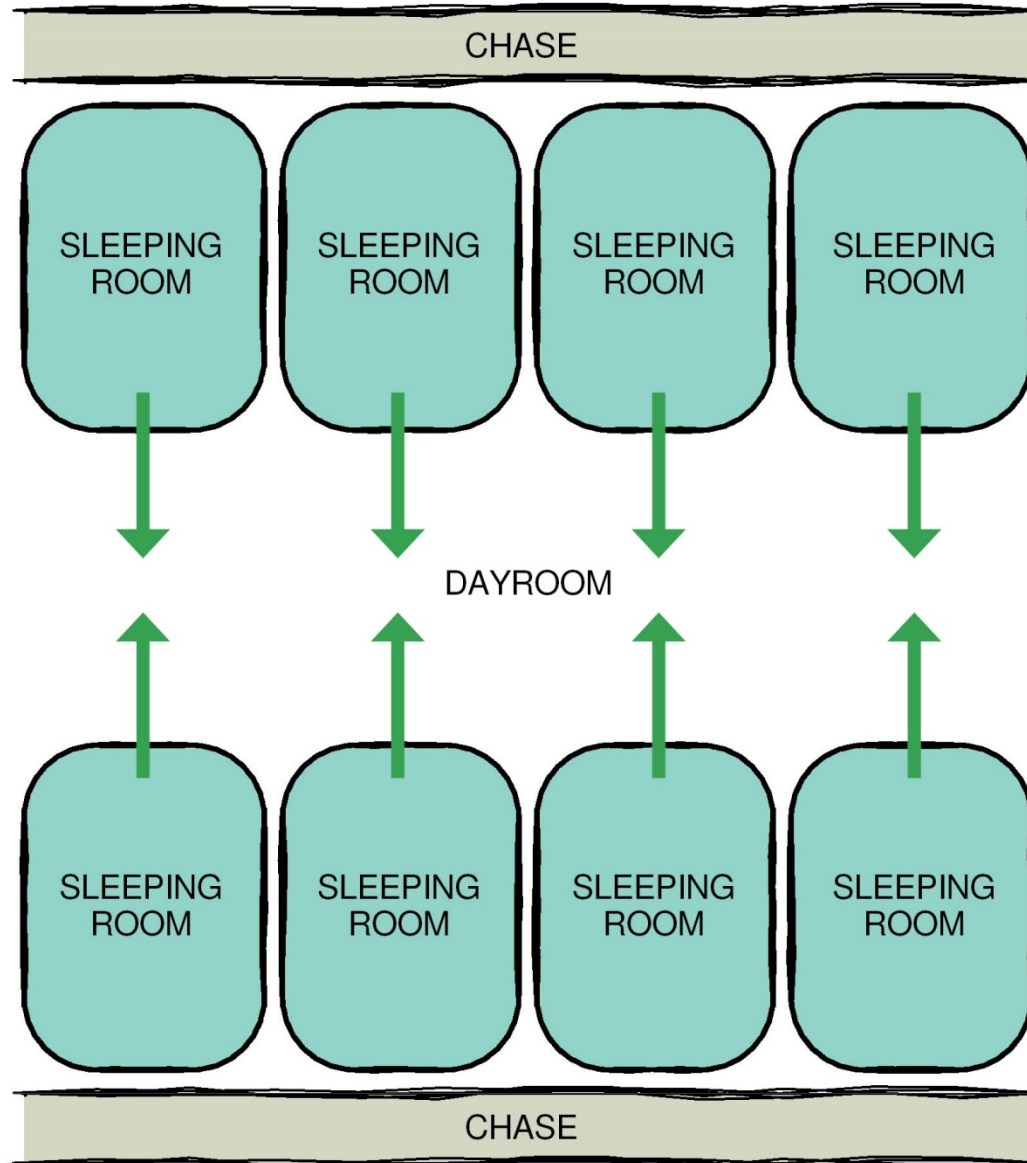
Design Notion

Traditional Linear Layout



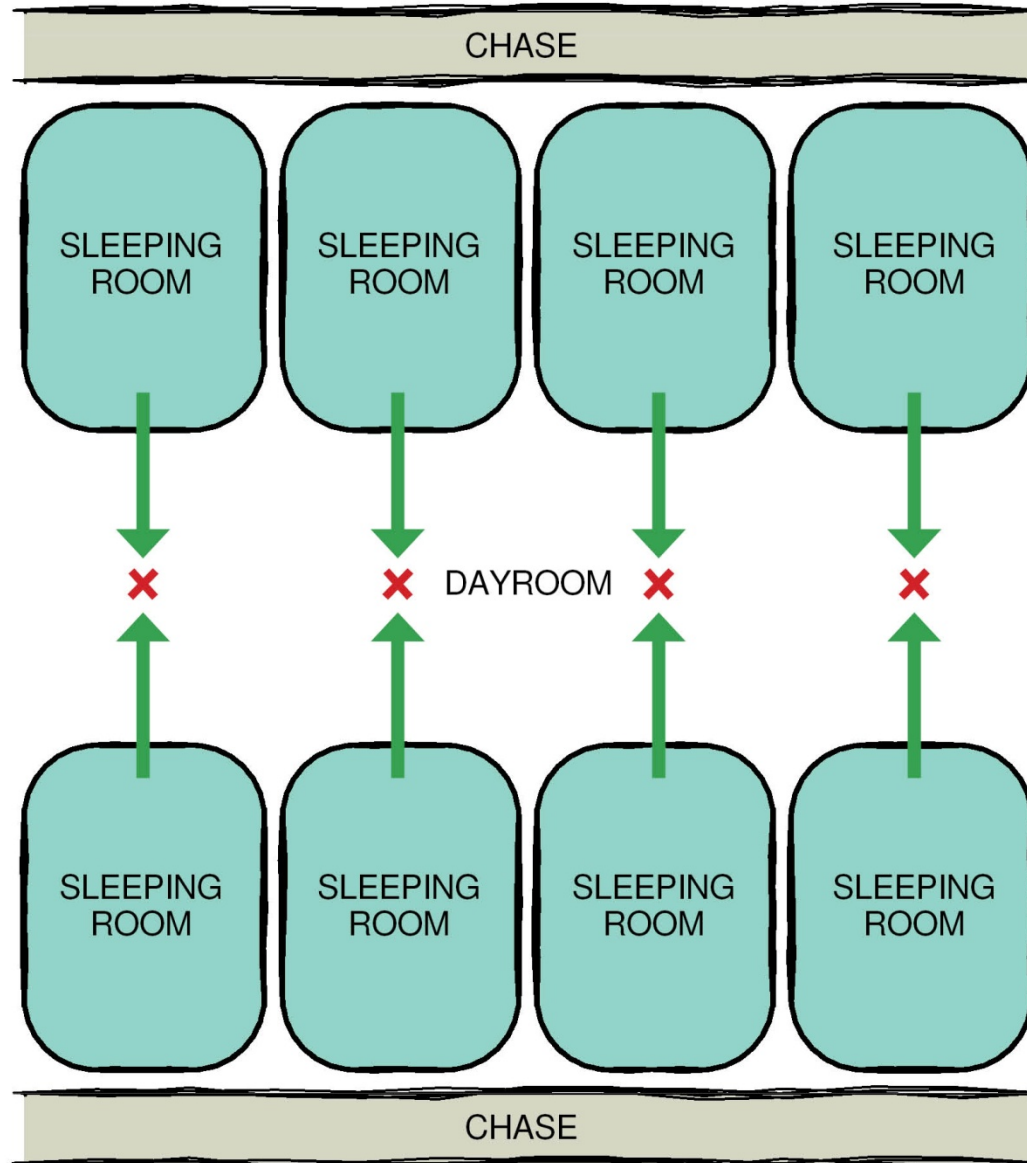
Design Notion

Traditional Linear Layout



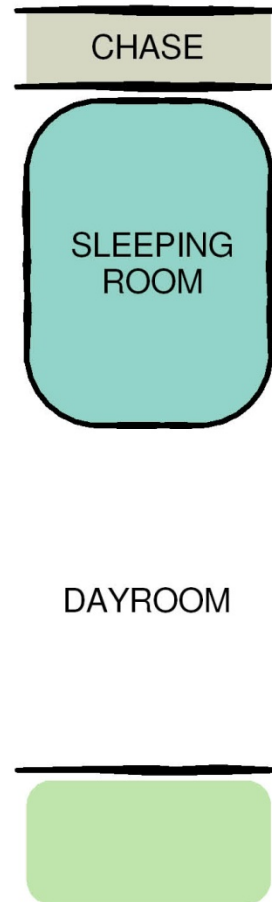
Design Notion

Traditional Linear Layout



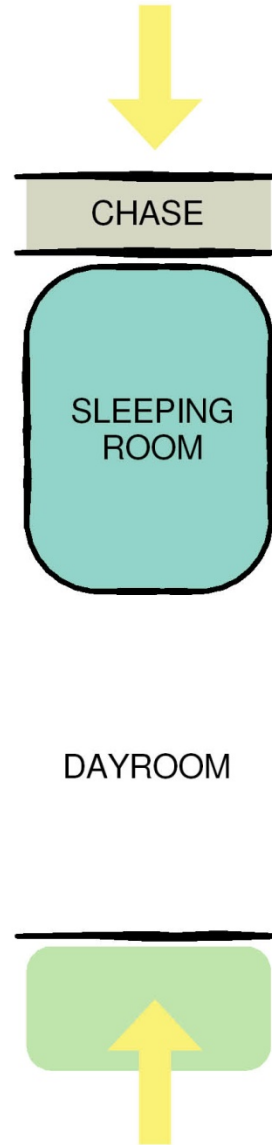
Design Notion

Maximizing Daylighting and Views



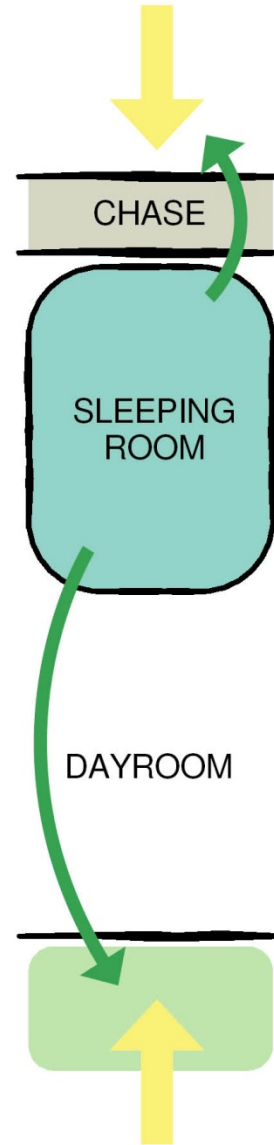
Design Notion

Maximizing Daylighting and Views



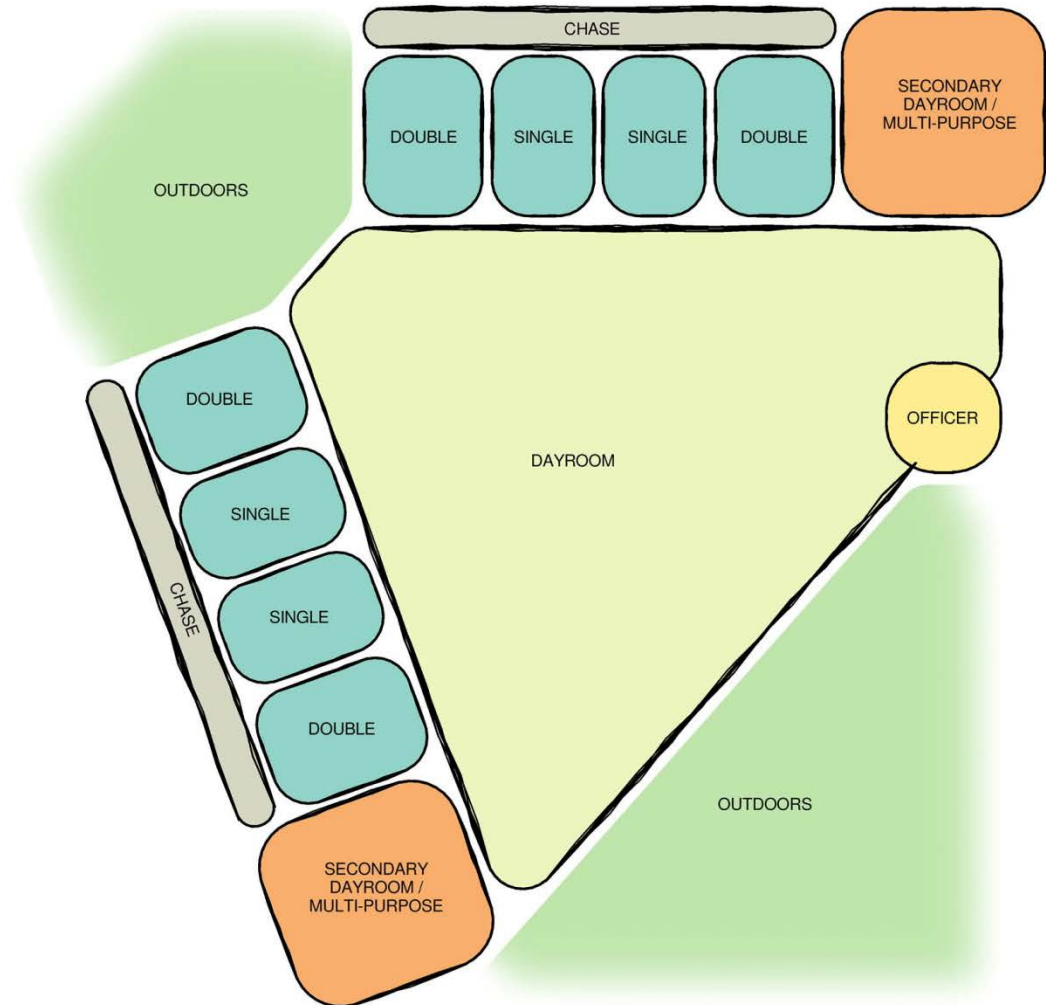
Design Notion

Maximizing Daylighting and Views



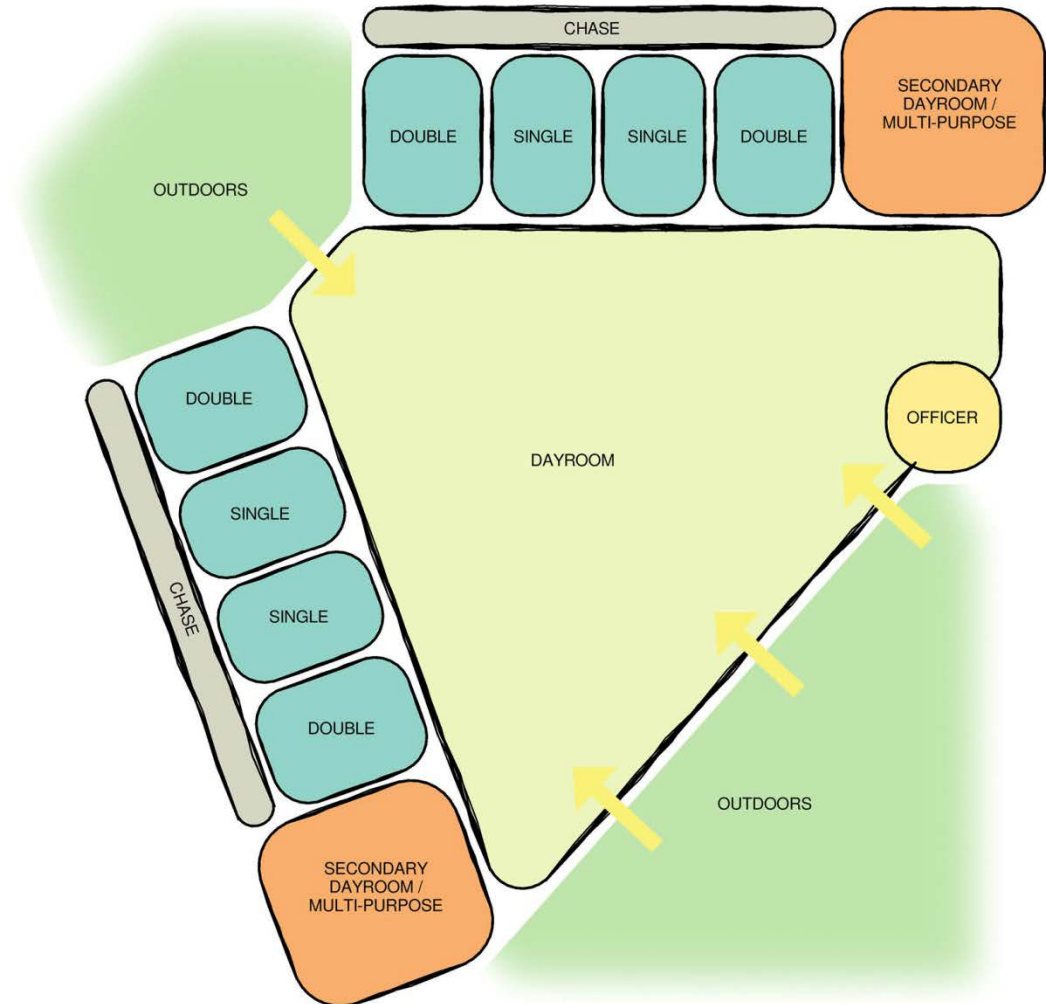
Design Notion

Behavior Based



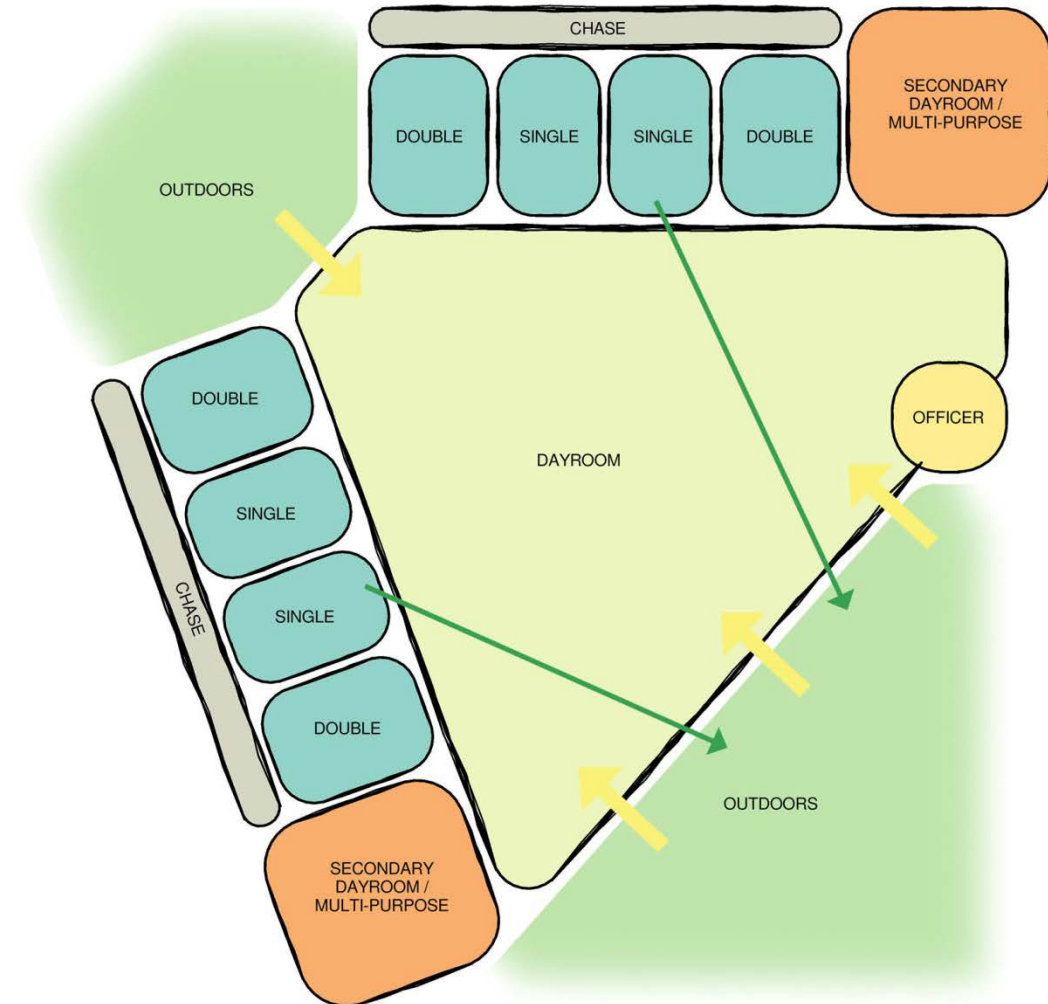
Design Notion

Behavior Based



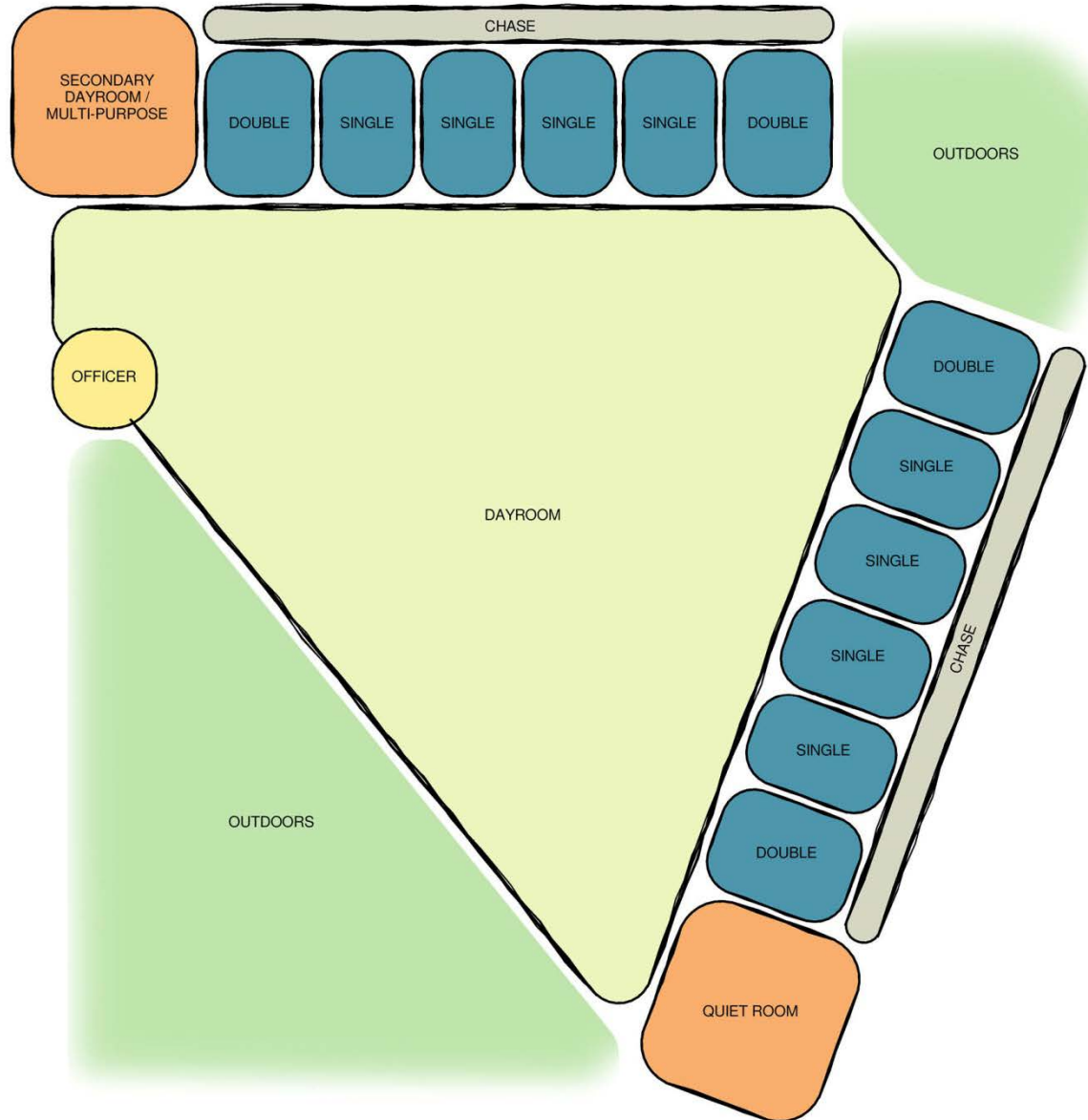
Design Notion

Behavior Based



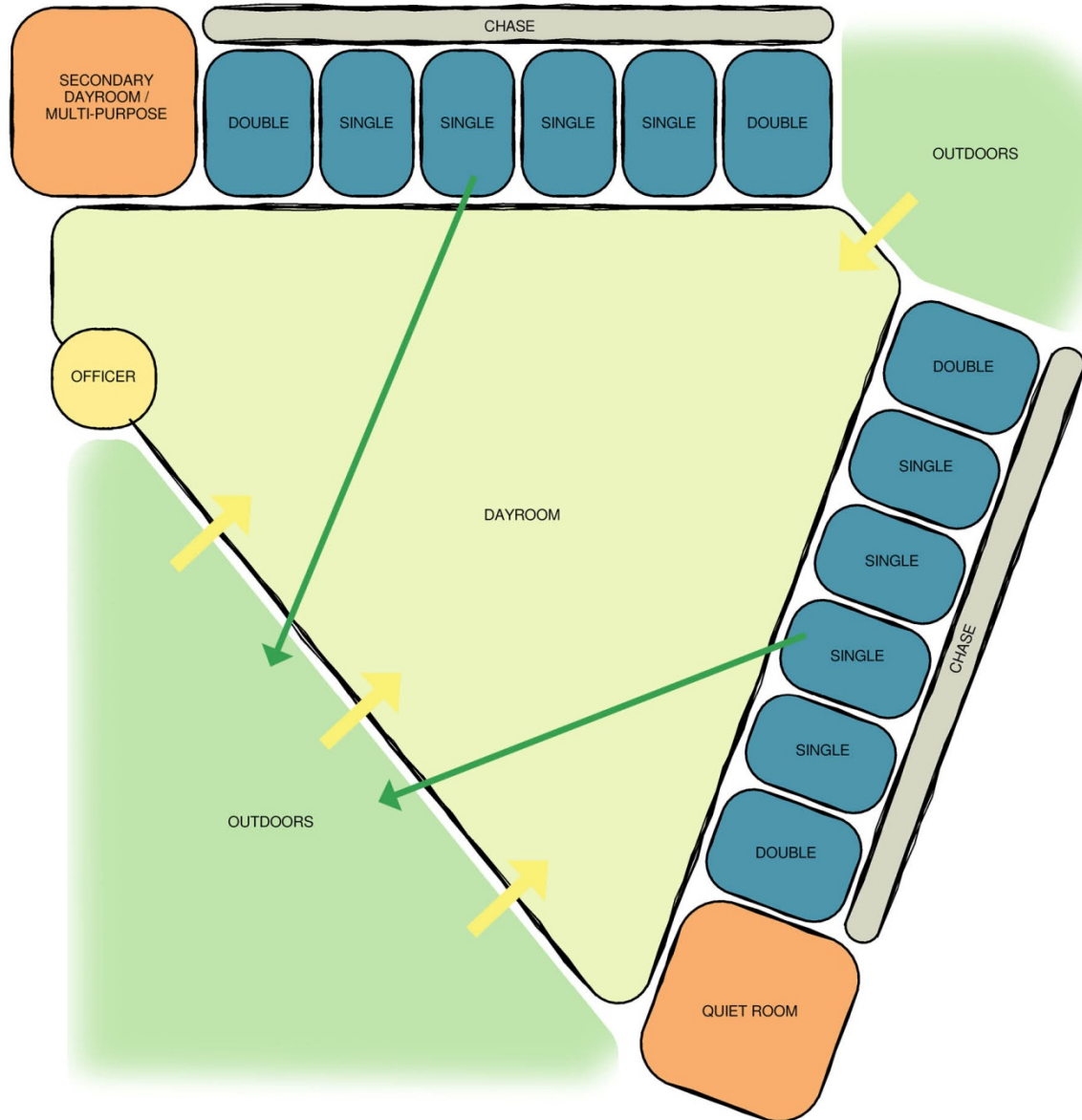
Design Notion

Higher Need Inmate



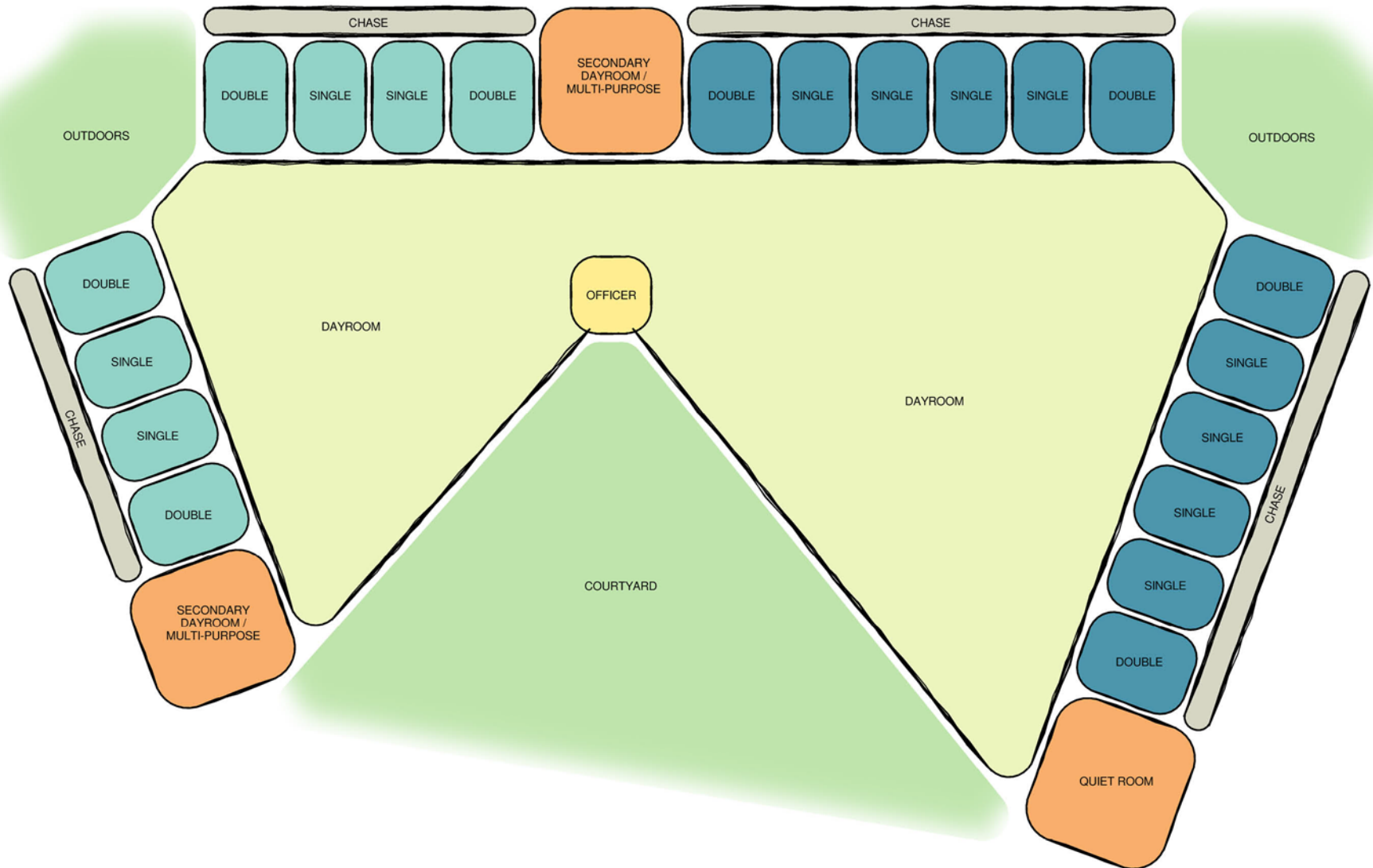
Design Notion

Higher Need Inmate



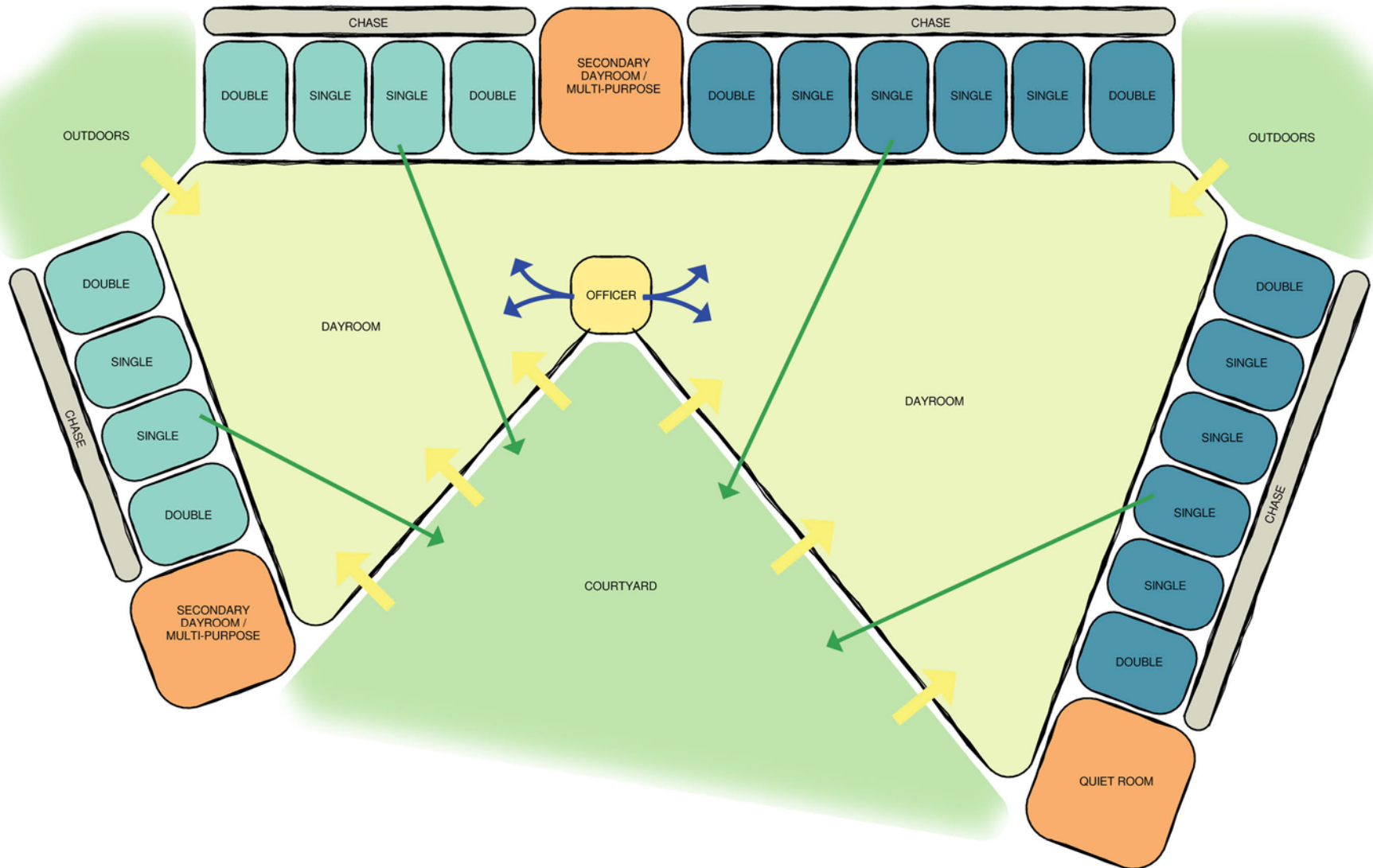
Design Notion

Housing Idea



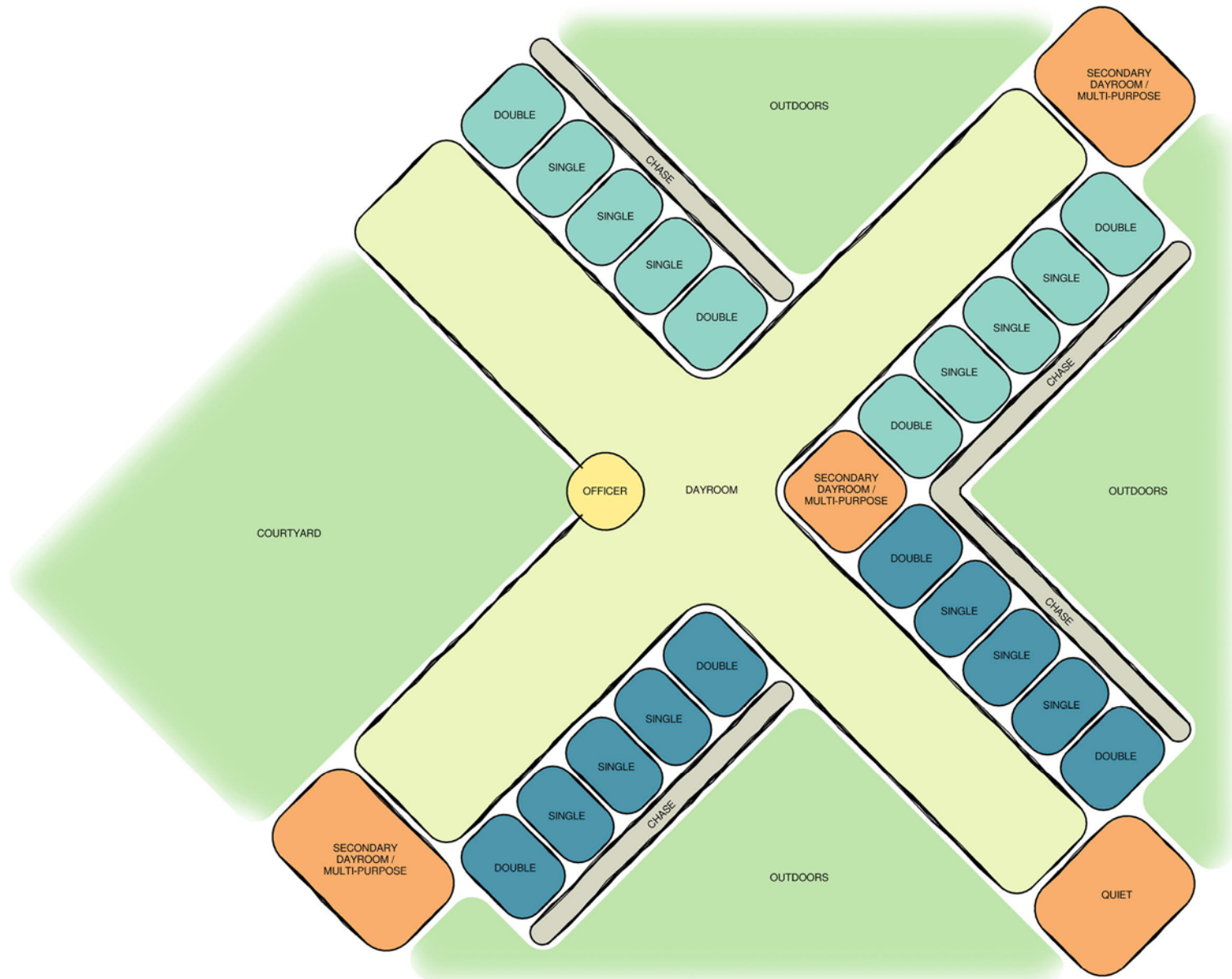
Design Notion

Housing Idea



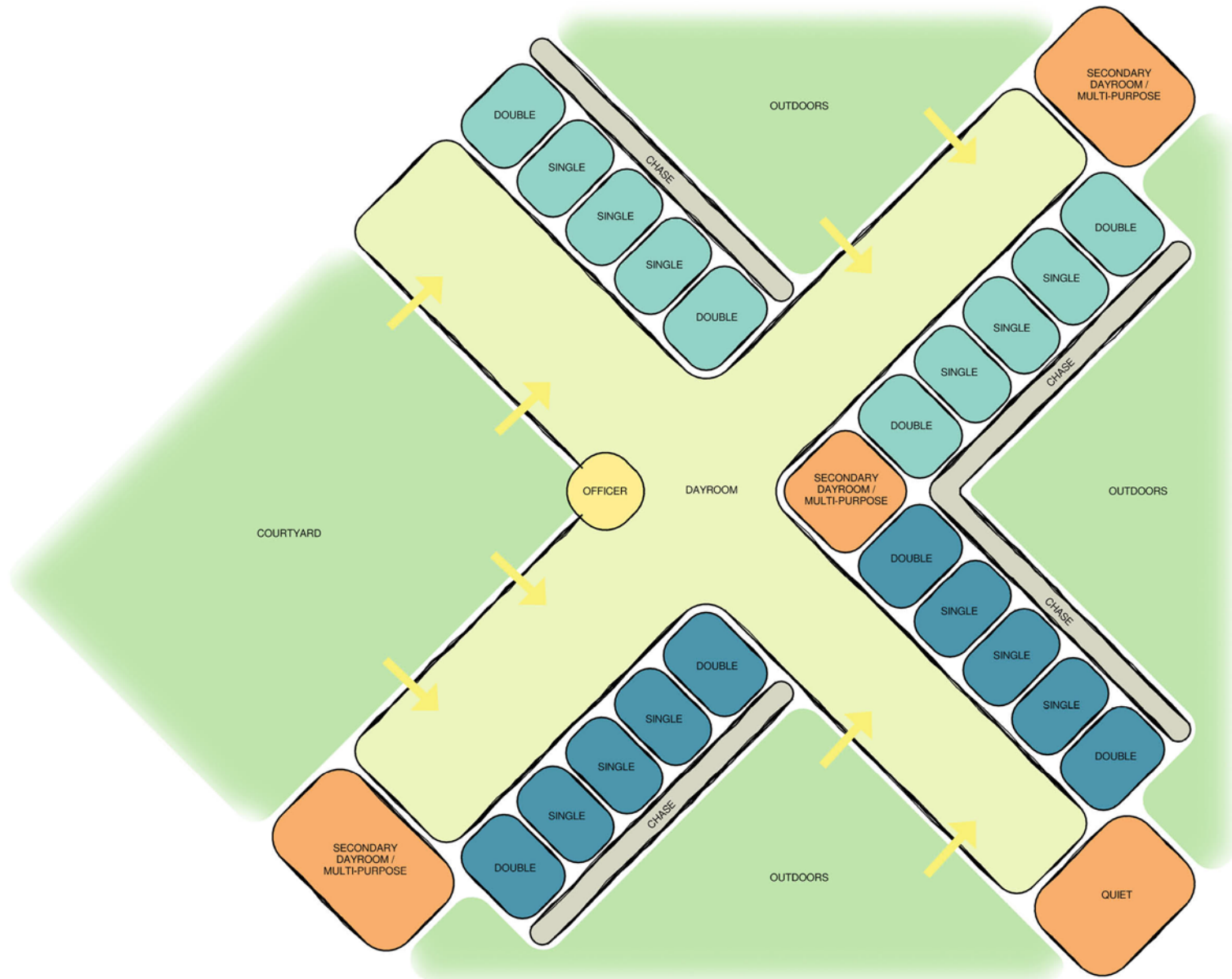
Design Notion

Housing Idea



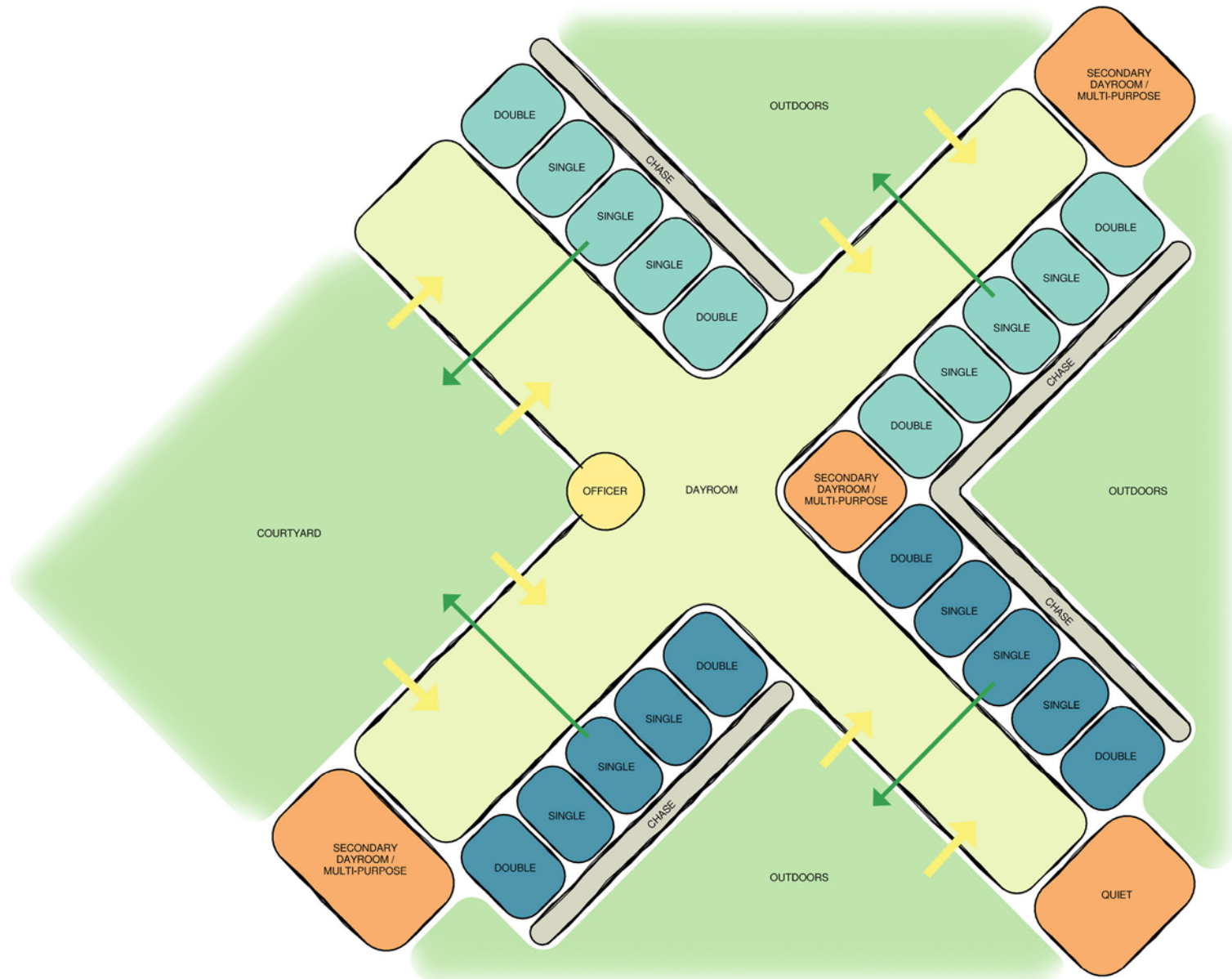
Design Notion

Housing Idea



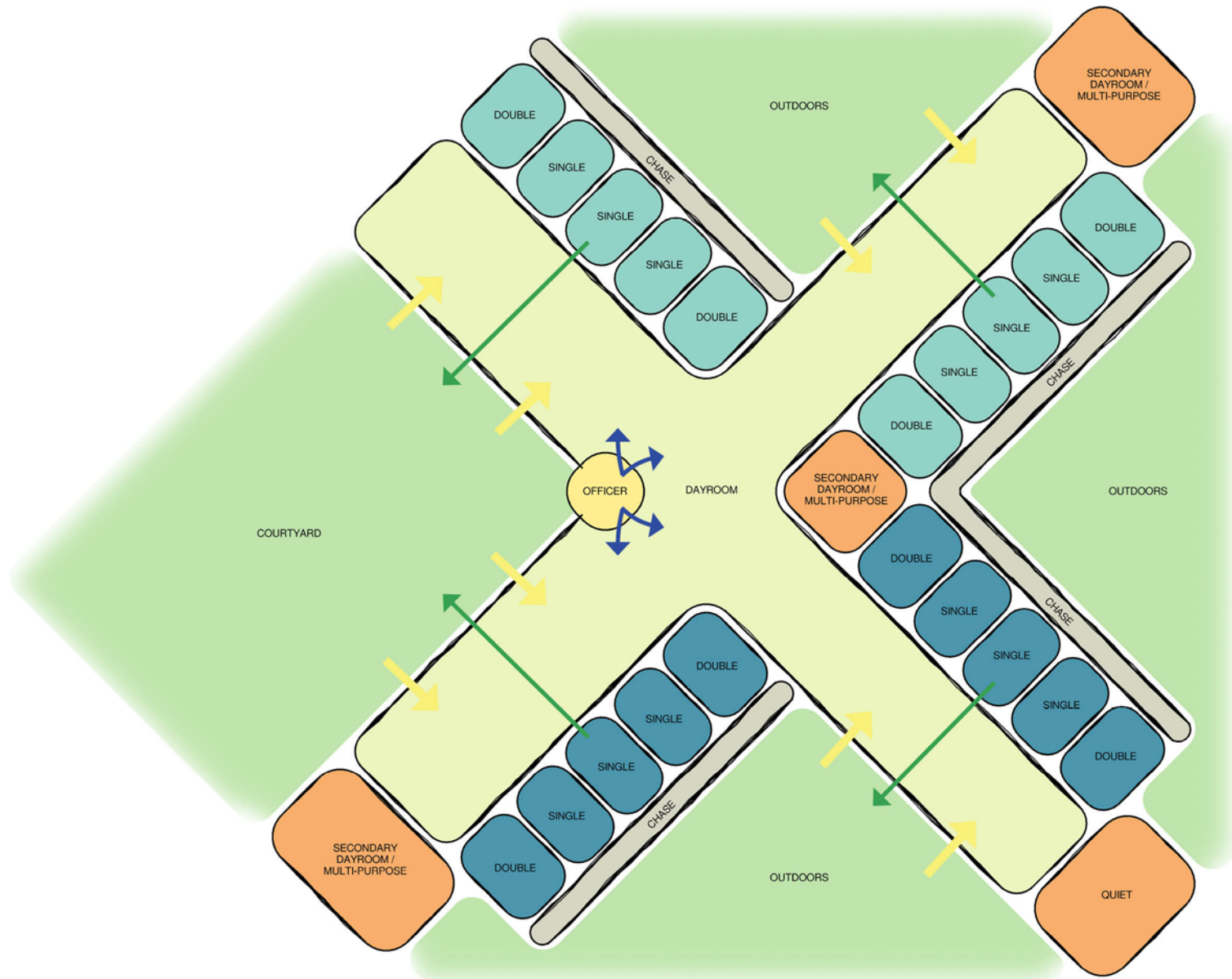
Design Notion

Housing Idea



Design Notion

Housing Idea



Next Steps

Working Together

- Use evidence based design where possible
- Crisis intervention training
- Continue development of diversion programs
- Charrette the solution



CHALLENGING THE STATUS QUO

SESSION # AAJ154CD1

Discussion Mental Illness & County Jails



2015 AIA ACADEMY OF ARCHITECTURE
FOR JUSTICE CONFERENCE

MIAMI
NOVEMBER 18-21, 2015

NOVEMBER 19, 2015 | 9:45 AM