

Healthcare Design Awards 2019

NOVEMBER 2019



**The American
Institute
of Architects**

Academy of
Architecture for Health
an **AIA** Knowledge Community

OFFICIAL PUBLICATION OF AIA ACADEMY OF ARCHITECTURE FOR HEALTH

Project: The GHESKIO Tuberculosis Hospital | Architect: MASS Design Group | Photo credit: Iwan Baan

Contents

3 AIA/AAH Healthcare Design Awards 2019

Category A

- 4

The GHESKIO Tuberculosis Hospital
Port-Au-Prince, Haiti
MASS Design Group
- 6

Westlake Dermatology | Concrete and Glass Pavilion
Marble Falls, Texas
Matt Fajkus Architecture

Category B

- 8

Casey House
Toronto, Ontario
Hariri Pontarini Architects
- 10

The U.S. Department of Veterans Affairs Palo Alto (VAPA)
Polytrauma and Blind Rehabilitation Center
Palo Alto, California
SmithGroup

Category C

- 12

Studio Dental II
San Francisco, California
Montalba Architects

14 AIA/AAH Healthcare Design Awards 2019 Jury

17 AIA/AAH Case Studies

18 AIA/AAH List of Healthcare Design’s Best Under 40

AIA/AAH
1735 New York Ave., NW
Washington, DC 20006
(202) 626 7386 | aah@aia.org

AAH 2019 Board
of Directors

President/outreach
Tushar Gupta, FAIA, NCARB
EYP
Houston, TX

2020 President/codes and standards
Kirsten Waltz, AIA, ACHA, EDAC,
LEED AP
Baystate Health
Boston, MA

Past president/operations/visibility
Vincent Della Donna, AIA, ACHA
Jackson, NJ

2021 President/strategy
Brenna Costello, AIA, ACHA, EDAC
SmithGroup
Denver, CO

Education
Ellen Taylor, PhD, AIA, MBA, EDAC
The Center for Health Design
Paoli, PA

Communications
Todd Robinson, FAIA, EDAC
Earl Swensson Associates, Inc.
Nashville, TN

Conferences
Kenneth Webb IV, AIA, ACHA, LEED
BD+C
HKS PC
Washington, DC

Follow us on Twitter @AIA_AAHA
Learn more and join AAH at aia.org/aah

AIA/AAH
Healthcare Design
Awards 2019

The mission of the AIA Academy of Architecture for Health (AAH) is to provide knowledge that supports the design of healthy environments by creating education and networking opportunities for members of—and those touched by—healthcare architecture. Together, we will improve the world by serving as the authoritative voice for the design of healthy environments, leading the way to effective future practice, and advocating with those who share our goals.

AAH is pleased to celebrate the outstanding achievements of contemporary architects and recognize firms for their contributions to the healthcare environment with the 2019 AIA/AAH Healthcare Design Awards. Each year the awards showcase the best of healthcare building design and healthcare design-oriented research, and highlight the trends of healthcare facilities and the future direction of design. Our panel of jurors evaluate project entries for effectively addressing conceptual strengths that address aesthetic, civic, urban, and social concerns, as well as the requisite functionality and sustainability requirements of a healthcare facility.

“The awarded projects demonstrate clarity in the planning idea which manifests into experiential spaces rooted in empathy. The architecture is crafted with rigor yet there is a restraint with honest expression of material and a connection to the place,” says Tushar Gupta, FAIA, president of AAH. “These projects not only represent design excellence in healthcare but also stand on their own as pieces of architecture.”

Full awards profiles are available at aia.org/aah.

Category A
Built: Less than \$25 million
in construction cost

Category B
Built: More than \$25 million
in construction cost

Category C
Renovations/Remodeled:
Primarily built within existing
hospital or clinical space, or
adaptive reuse of an existing
building to a healthcare use

CATEGORY A

THE GHESKIO TUBERCULOSIS HOSPITAL

Port-Au-Prince, Haiti | MASS Design Group



The 2010 earthquake that hit Port-Au-Prince exacerbated Haiti’s already high prevalence of tuberculosis by destroying the country’s health infrastructure and interrupting patient treatments. This precipitated an outbreak of Multi-Drug Resistant Tuberculosis (MDR-TB), a highly contagious disease that requires treatment lasting up to 24 months. Infection control and patient trauma were driving factors in the design of the Tuberculosis Hospital for Les Centres GHESKIO. Effective methods of passive ventilation and infection control were used to reduce in-hospital transmission of TB in this high-risk population.

- ARCHITECT**
MASS Design Group
- OWNER/CLIENT**
Les Centres GHESKIO
- PHOTOGRAPHS/ILLUSTRATIONS**
Iwan Baan/MASS Design Group
- MECHANICAL ENGINEER**
Berelec
- STRUCTURAL ENGINEER**
CBI Consulting
- CIVIL ENGINEER**
Fall Creek Engineering
- LANDSCAPE ARCHITECT**
MASS Design Group, Sierra Bainbridge
- LANDSCAPE CONSULTANTS**
Jardins & Accessoires
- GENERAL CONTRACTOR**
Chantiers d’Haiti
- CONSTRUCTION MANAGER**
GBS Group, Raphael Izmary, Intl. Assoc. AIA
- CONSTRUCTION COST OR ANTICIPATED CONSTRUCTION COST**
\$2 million
- BUILDING AREA OR ANTICIPATED BUILDING AREA**
14,000 sq. ft.
- SUBSTANTIAL COMPLETION DATE**
March 2015

FROM THE JURY

“This building was lauded for being of its place—responding to both the culture and the climate. It reaffirmed hope and healing, while serving to build community.”

CATEGORY A

WESTLAKE DERMATOLOGY | CONCRETE AND GLASS PAVILION

Marble Falls, Texas | Matt Fajkus Architecture

**ARCHITECT**

Matt Fajkus Architecture

OWNER/CLIENT

Westlake Dermatology

PHOTOGRAPHS/ILLUSTRATIONS

Charles Davis Smith, AIA

CIVIL ENGINEER

LJA Engineering

MEP ENGINEER

DBR Engineering Consultants

STRUCTURAL ENGINEER

MJ Structures

GENERAL CONTRACTOR

Zapalac Reed

LANDSCAPE ARCHITECT

Eden Garden Design

FURNITURE SELECTION

Allison Burke Interior Design

CONSTRUCTION COST OR ANTICIPATED CONSTRUCTION COST

\$1.8 million

BUILDING AREA OR ANTICIPATED BUILDING AREA

3,000 sq. ft.

SUBSTANTIAL COMPLETION DATE

May 2017

FROM THE JURY

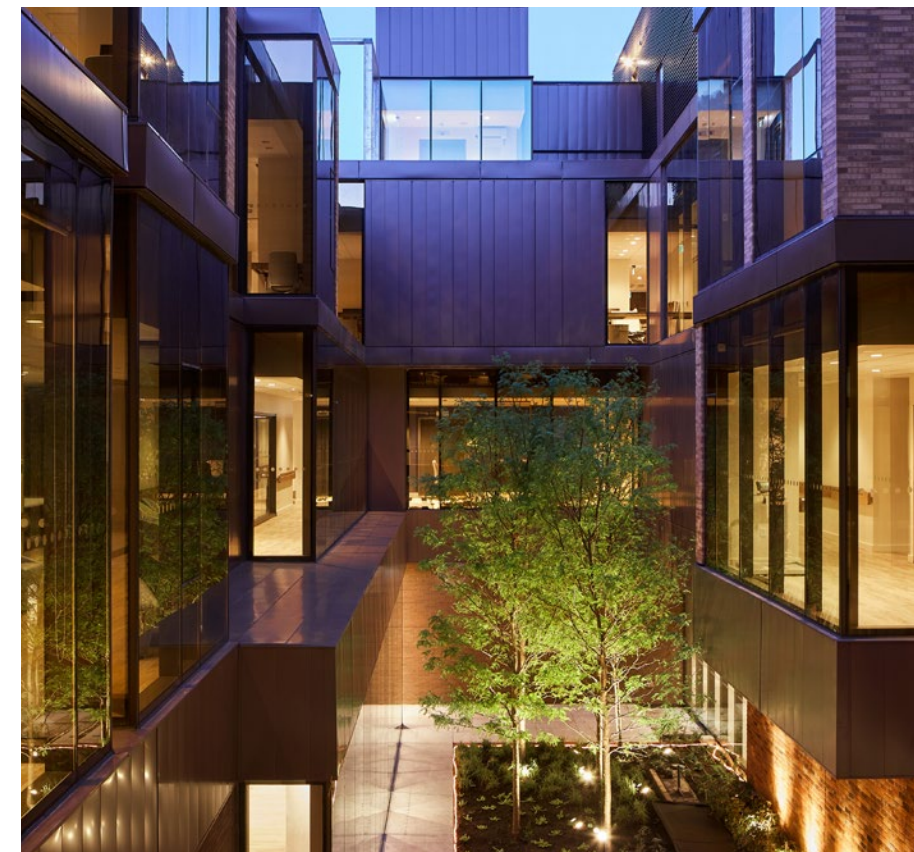
“The building is sited elegantly and integrates well with the landscape, which, like the building, takes an honest approach that is not overdesigned.”

The Westlake Dermatology building stands out as a timeless frame in the rolling landscape, rather than appearing clinical or sterile. The medical and cosmetic dermatology practice was founded by Dr. Nikolaidis who believes great design serves as an inspiration for aesthetics. The facility in Marble Falls was a ground-up design project strengthened by a collaborative process directly with the clients and consultants. From a distance, the structure is a pavilion in the landscape, standing as a structure to behold in and of itself, but from in and around the building, it acts as a deferential backdrop to function and as a frame for views beyond. Patient care and comfort are priorities—both influencing the design to embody feelings of security, ease, and solidity.

CATEGORY B

CASEY HOUSE

Toronto, Ontario | Hariri Pontarini Architects



The renovation and extension to Casey House, a specialized healthcare facility for individuals with HIV/AIDS, develops a new prototype for hospitals. The facility meets the needs of patients in a setting designed to evoke the experience and comforts of home. In order to create a comfortable, home-like user experience, the embrace emerged as a unifying theme—one of warmth, intimacy, comfort, privacy, connectivity, and solidity. The architecture is a physical manifestation of the embrace. The extension reaches over and around the existing heritage designated building, which has been restored, while the new addition—a robust, textured exterior—surrounds the central courtyard.

ARCHITECT

Hariri Pontarini Architects

OWNER/CLIENT

Casey House

**PHOTOGRAPHS/
ILLUSTRATIONS**

doublespace photography

LANDSCAPE ARCHITECT

Mark Hartley Landscape Architects

STRUCTURAL CONSULTANT

Entuitive

TEAM HERITAGE CONSULTANT

ERA Architects

**MECHANICAL AND ELECTRICAL
CONSULTANT**

WSP Canada

**ACOUSTICS: SWALLOW
SECURITY**

Mulvey & Banani

FOOD SERVICE

Kaizen Foodservice Planning

CODE CONSULTANT

David Hine Engineering

**CONSTRUCTION COST OR
ANTICIPATED CONSTRUCTION
COST**

\$30 million

**BUILDING AREA OR
ANTICIPATED BUILDING AREA**

59,000 sq. ft.

**SUBSTANTIAL
COMPLETION DATE**

September 2017

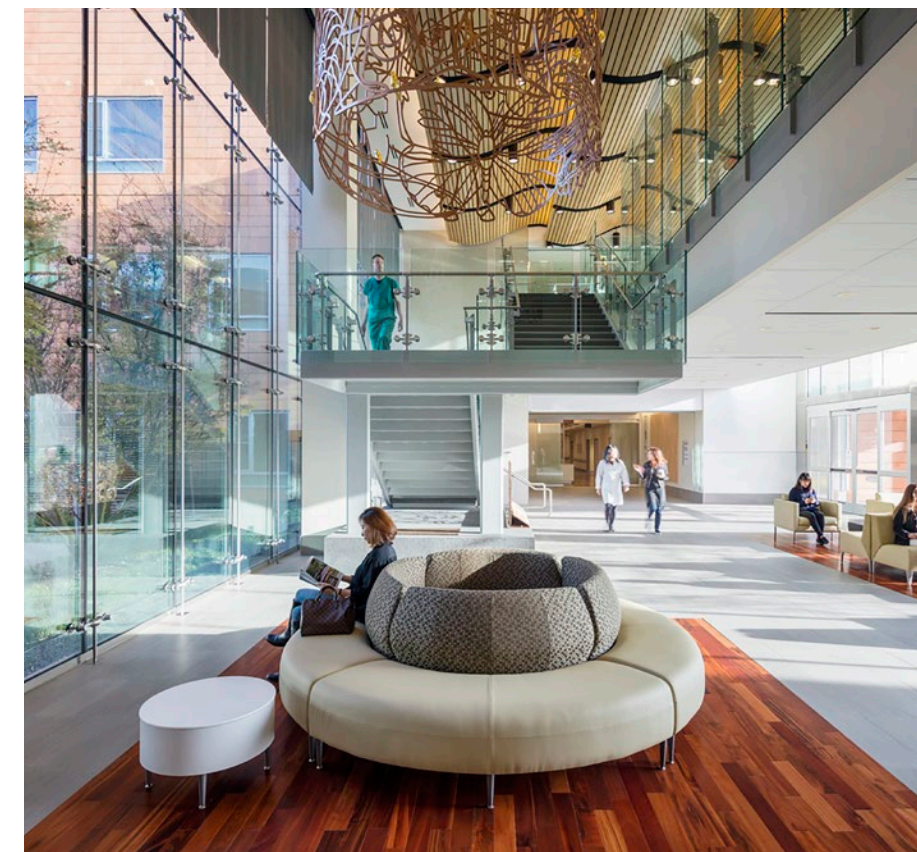
FROM THE JURY

“The interiors are well done with a simple palette making modern, yet very warm and human spaces.”

CATEGORY B

THE U.S. DEPARTMENT OF VETERANS AFFAIRS PALO ALTO (VAPA) POLYTRAUMA AND BLIND REHABILITATION CENTER

Palo Alto, California | SmithGroup



The new VA Palo Alto (VAPA) Polytrauma and Blind Rehabilitation Center is one of only five polytrauma centers in the country designed specifically to serve and enhance the patient rehabilitation experience of polytrauma, blind and visually impaired veterans. The Center's impactful approach to healing through design—where the environment itself is a tool for rehabilitation—provided the design team with multiple opportunities to improve the patient experience. The design integrates the latest advances in accessibility, universal design, and rehabilitation practices, resulting in a healthcare facility that aims to enhance patient recovery not only during their rehabilitation journey but long after.

ARCHITECT

SmithGroup

ASSOCIATE ARCHITECT

The Design Partnership LLP

OWNER/CLIENT

Withheld per client's request

**PHOTOGRAPHS/
ILLUSTRATIONS**

Tim Griffith and Kyle Jeffers

STRUCTURAL ENGINEER

Degenkolb Engineers

CIVIL ENGINEER

BKF Engineers

MECHANICAL ENGINEER

Capital Engineering Consultants, Inc.

ELECTRICAL ENGINEER

Guttman & Blaevoet | Cammisa + Wipf

INTERIORS

SmithGroup

LANDSCAPE ARCHITECTS

Keller Mitchell & Co. | Royston Hanamoto
Alley & Abey

ACOUSTICS

Charles M. Salter Associates, Inc.

GEOTECHNICAL

Treadwell & Rollo, a Langan Company

**CONSTRUCTION COST OR
ANTICIPATED CONSTRUCTION
COST**

\$600 million

**BUILDING AREA OR
ANTICIPATED BUILDING AREA**

174,000 sq. ft.

**SUBSTANTIAL
COMPLETION DATE**

November 2020

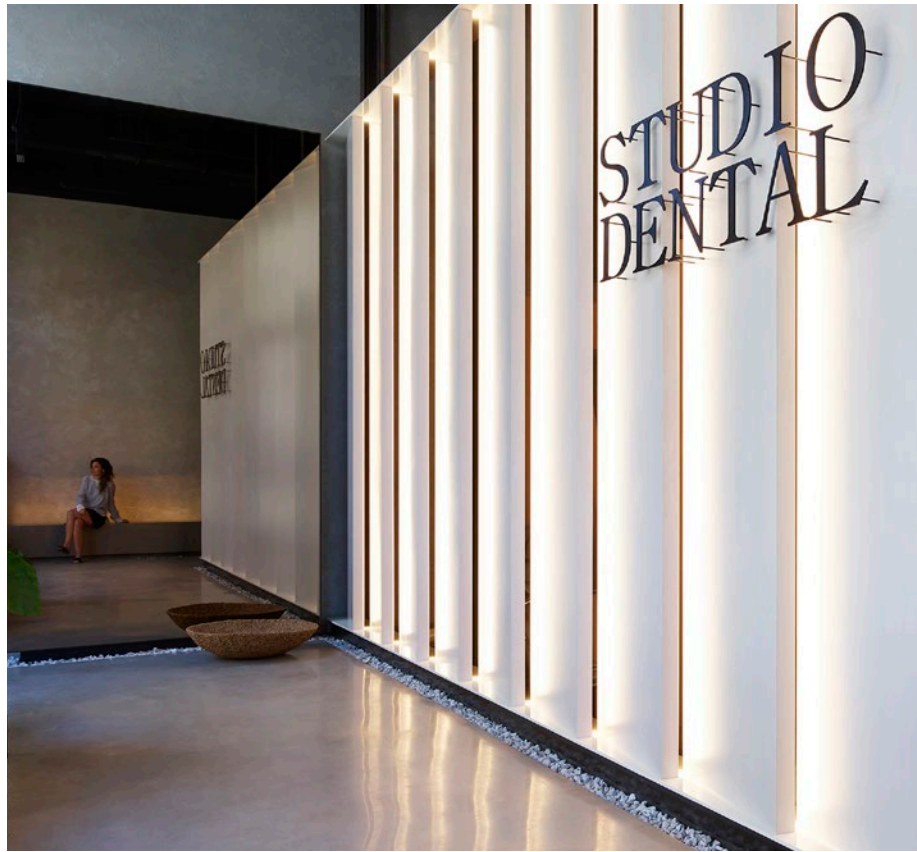
FROM THE JURY

“The result is powerful and resourceful given the tight budget.”

CATEGORY C

STUDIO DENTAL II

San Francisco, California | Montalba Architects



Situated within a rapidly developing neighborhood in San Francisco’s financial district, the dentists’ brick and mortar location is defined by a modern aesthetic, while honoring the historic elements of the base building. This creates a transcendent environment that feels gallery-like and serene. The design centers on a conceptual “lantern” within the dark building core, which communicates a sense of scale, luminescence, and transparency, and envelops the series of operatories within. The lantern wall panels not only light up the dark building shell, but also glow through the storefront to brighten the street.

- ARCHITECT**
Montalba Architects
- OWNER/CLIENT**
Studio Dental
- PHOTOGRAPHS/ILLUSTRATIONS**
Kevin Scott/Montalba Architects, Inc.
- MEP ENGINEER**
ACIES Engineering
- STRUCTURAL ENGINEER**
Julia Y. Chen Design Inc.
- GENERAL CONTRACTOR**
Build Group
- LIGHTING**
Sean O’Connor Lighting
- FABRICATOR - MILLWORK**
Pacific Westline, Inc.
- CONSTRUCTION COST OR ANTICIPATED CONSTRUCTION COST**
Withheld per client’s request
- BUILDING AREA OR ANTICIPATED BUILDING AREA**
1,400 sq. ft.
- SUBSTANTIAL COMPLETION DATE**
June 2017

FROM THE JURY

“This project creates a gorgeous decompression setting for a Zen-like experience. It adds sculptural, spatial drama to something that is usually institutional.”

AIA/AAH Healthcare Design Awards 2019 Jury

There were a lot of large projects that were completed and submitted this year. Very few were recognized, showing how difficult it is to bring big projects to a successful resolution. Some of these projects suffered from a lack of restraint, a central theme or a consolidating idea. The most successful ones came across as more civic than commercial.

Many of the larger projects were academic health settings rather than large community hospitals, suggesting a shift in the landscape. There were signs that we may be headed toward a fragmentation of healthcare—there was more emphasis on prevention and wellness, and less on the clinical. A significant number of repurposed entries were submitted this year, leading to the question of how do we best repurpose the building landscape? Seeing an emphasis on community wellness sparked a conversation about how healthcare organizations are struggling with becoming a community resource while not necessarily designing buildings that invite the community into the clinical setting. How does a clinical setting become an anchor for health in building and program? It was agreed that the conclusive answers are still a ways away.

Jurors



Marlon Blackwell, FAIA (Chair)

Marlon Blackwell, FAIA, is a practicing architect at Marlon Blackwell Architects in Fayetteville, Arkansas, and serves as the E. Fay Jones Distinguished Professor at the Fay Jones School of Architecture and Design at the University of Arkansas. He served as Department Head from 2009–2015 and was named among the “30 Most Admired Educators” by DesignIntelligence in 2015. Work produced in his professional office, Marlon Blackwell Architects, has received national and international recognition with significant publication in books, architectural journals and magazines and numerous design awards, including the 2016 Cooper Hewitt National Design Award in Architecture.



Brian Uyesugi

Brian Uyesugi is an innovative designer at NBBJ whose philosophy stems from a clear understanding of contextual, cultural, and programmatic issues. Where most designers see constraints, he sees opportunities to bring together function, beauty and performance to positively impact the lives of people and society. With a focus in healthcare architecture, Brian has led the design of global healthcare projects, from ambulatory centers and clinics to the world’s top hospitals. His work has been published in numerous media outlets, such as *Modern Healthcare*, *Contract Magazine* and *Architectural Record*.



James Childress, FAIA

A graduate of Rhode Island School of Design, Jim’s work has been recognized with 70 design awards including the American Institute of Architects 1998 Architecture Firm Award. He was inducted into the College of Fellows of the American Institute of Architects in 2001 and served as the Chair of the AIA Committee on Design in 2015. Jim joined Centerbrook Architects in 1979 and became a principal (owner) in 1996.



Jim Henry, AIA

Jim Henry, AIA, is a Senior Vice President for CallisonRTKL. His extensive portfolio brings nearly 20 years of architectural experience, reflecting his commitment to design physical environments that enrich lives and promote the humanistic principles he strongly values. Jim is an award-winning architect with recognition both in leadership and design. He strives to bring visionary leadership and design to every project opportunity. His ability to help deliver award-winning projects that exceed the client’s expectations are a reflection of his ability to connect big ideas and client’s vision with his passion for great design.



Jocelyn Stroupe, AAHID, EDAC, IIDA, ASID

With over 30 years of industry experience, Jocelyn Stroupe, Director of Healthcare Interiors for CannonDesign, is a leading expert in the health market. Jocelyn thrives on uniting the disciplines of planning, programming, branding, and facility management with cohesive, comforting interior design. She is especially invested in understanding the unique needs of all users—patients, visitors, providers and staff—in their healthcare settings. Jocelyn is a founding member of the American Academy of Healthcare Interior Designers, where she served as the President of the Board of Directors from 2011–2013.



Sunil Shah

Sunil Shah is the Vice President of Facilities Strategy, Planning and Design, National Facilities Services at Kaiser Permanente. In this executive role, he oversees a \$30 billion capital planning and design portfolio across all nine Kaiser Permanente regions. He has over 34 years of hospital design and program management experience, including 30 years in various positions throughout Kaiser Permanente. He is a key player in the development of numerous innovative design projects that include the Small Hospital Big Idea competition, the award-winning Anaheim Radiation Oncology Center, and the Reimagining Ambulatory Care Design work. He went to the School of Architecture in Ahmedabad, India, and holds a Master's Degree in Environmental Planning from Arizona State University.



Vincent Della Donna, AIA, ACHA

Vincent Della Donna, AIA, ACHA, is a healthcare consultant and the 2018 President of the AIA Academy of Architecture for Health. Having spent the majority of his professional career as a client representative, he has the unique ability to understand healthcare clients' needs. He is the founding principal of his Healthcare Architecture Planning consulting firm. As leader of consulting services, and select projects, Vincent is an advocate for professional services that are deeply responsive to client needs. He has three decades of experience, with a healthcare focus for more than 20 years.

The AAH Case Study Library



AWARD-WINNING PROJECTS THAT BRIDGE THE GAP BETWEEN RESEARCH & PRACTICE

See the research and design concepts behind past recipients of the prestigious AIA/AAH Healthcare Design Awards. Projects include hospitals, academic medical centers, pediatric facilities, dental offices, clinics, and more.

aia.org/aahtcasestudies

AIA/AAH List of Healthcare Design's Best Under 40

The U40 list is a nomination-oriented recognition to celebrate individuals under 40 years of age making significant contribution to the advancement of healthcare design. Candidates for the award must display leadership and innovation and take on initiatives that go beyond the project responsibilities, working toward the advancement of the industry as a whole. Each year two individuals are selected to be added to the distinguished U40 list.

Jury

Akshay Sangolli, AIA, EDAC, LEED AP BD+C

Amanda Mewborn

Brenna Costello, AIA, ACHA, EDAC

David Allison, FAIA, FACHA

David Frum, FAIA

2019 Recipients



Colleen Wittman Newland, AIA, EDAC, LEED AP

Colleen is a Strategic Designer at Philips Design in Cambridge, Massachusetts. With her architectural background as a foundation, she combines qualitative and quantitative research with service design thinking to develop compelling design solutions that weave new technologies and interactions into the healthcare experience. Colleen has created design innovations in a variety of service line areas such as radiology, pediatrics/NICU, cardiology, endoscopy, and emergency/pre-hospital. Before joining Philips, she worked for the design consultancy Pentagram. She holds a Master's Degree in Interior Architecture and Product Design from Kansas State University.



Parini Mehta, AIA, LEED AP

Parini is an Associate Principal at CO Architects, managing large, prominent healthcare projects throughout California. With over 10 years of healthcare experience, she is known for her strong work ethic, thoroughness, and thoughtfulness in crafting creative options and solutions. Parini's experience includes coordination and management of projects for Scripps Health, Stanford University Medical Center, LAC + USC Medical Center, Cedars-Sinai, and UC San Diego and UCLA Health. Parini holds a Master of Architecture degree from the Southern California Institute of Architecture and a Bachelor of Science degree in Architecture from the University of Michigan.

Recommend an individual for the U40 award next year when nominations open in early 2020.

Please direct all inquiries to aah@aia.org.

Award Call for Entries 2020

The AIA Academy of Architecture for Health annually showcases the best of healthcare building design and design-oriented research.

Submissions open January 2020.

aia.org/aahawards