

Community Engagement in Design for Law Enforcement

Stantec **Architecture**

Michael Ellis

Manager, Facilities Management, Toronto Police Services

Michael Moxam

Principal, Stantec Architecture

Tom Kyle

Associate, Stantec Architecture

The importance of community input in the design process



- Community based policing introduced to Toronto (current form) about 20-years ago.
- Community based policing is a holistic philosophy. All TPS members receive training geared to this philosophy.
- Toronto has one of the lowest crime rates (major city) in north america & rates are going down. fewer officers are currently on the job.

The TPS commitment



- Communities are involved with their police & how service is provided.
- Community based policing is an ongoing process – product improvement.
- Facility design incorporated about 18-years ago – elgin, illinois visit (fact finding).
- Community representation on all design team for public access buildings.
- Community does not have input to site selection process.

how the process is set up



- Selection to the design team is done through the local unit commander in consultation with the community, usually the community police liaison committee (cplc). membership is limited (2-3 rep's.).
- Community rep's. act as a conduit for community input.
- Community representatives are subject to a TPS security check.

community representation on the design steering committee



- Community concerned with;
 - Traffic
 - Site access/egress
 - Parking
 - Building appearance
 - Landscaping
 - Public access (handicapped accessibility)
 - Detainee release provisions
 - Facility amenities (meeting room, etc.)
 - Green building sustainability issues
 - Ability of facility to accommodate police resources required

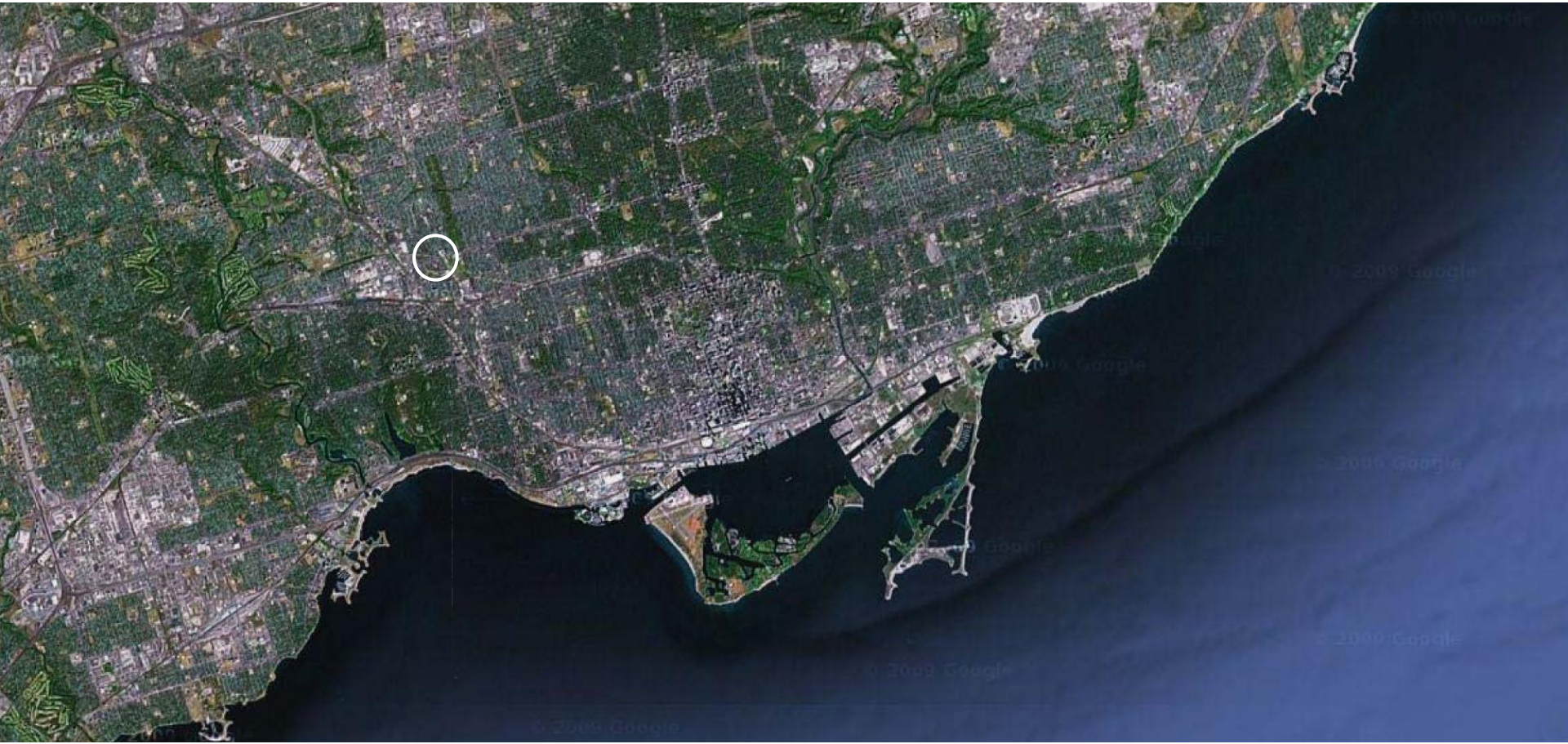
community representation on the design steering committee

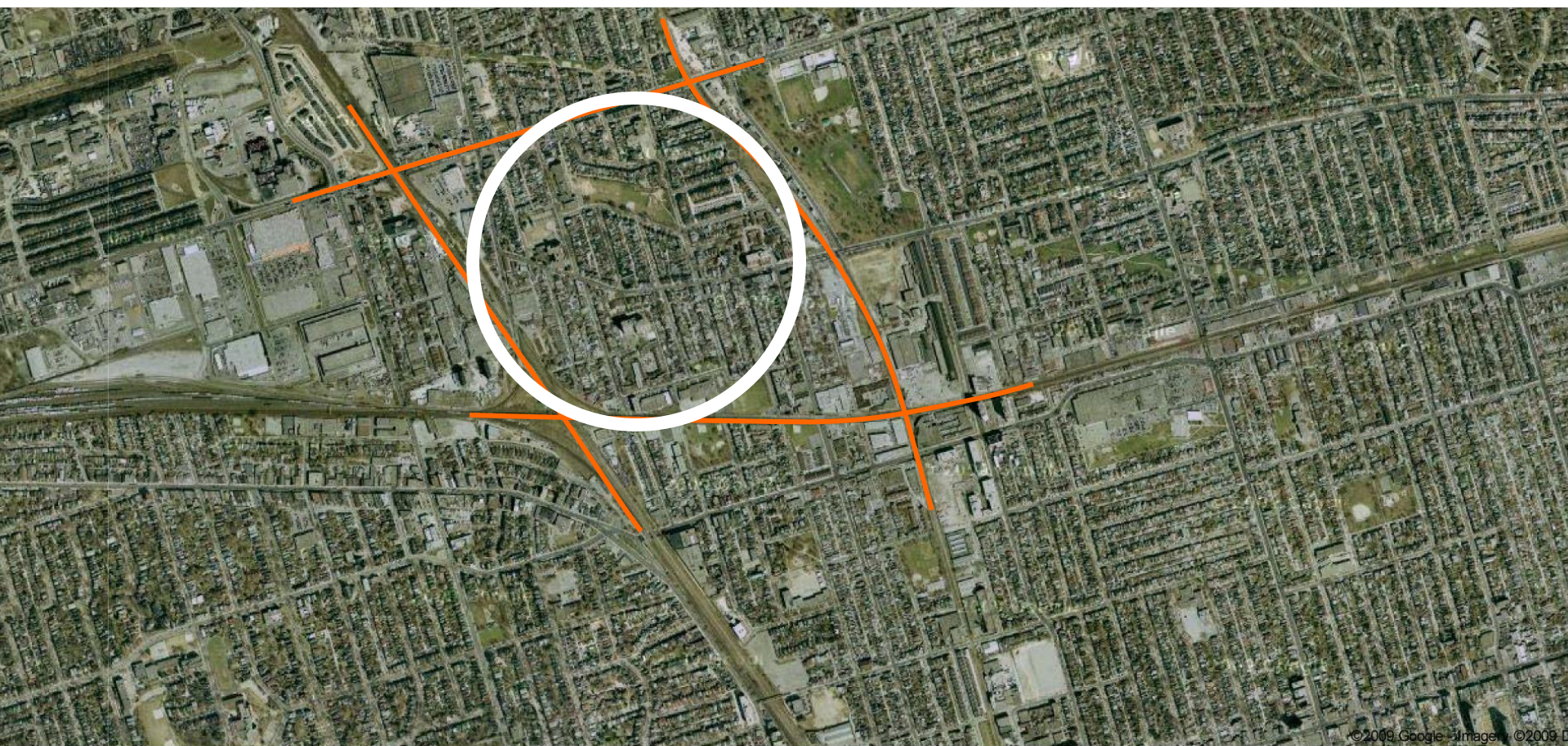


- Communications via, community information meetings, internet web page, cplc, community notice board, etc.
- Situation regarding the site are dealt with by the project team not public relations unit.
- TPS ensures gc/pm is aware of community based philosophy.
- Community is invited to open house, grand opening, etc.

CASE STUDY

TORONTO POLICE SERVICES 11 DIVISION











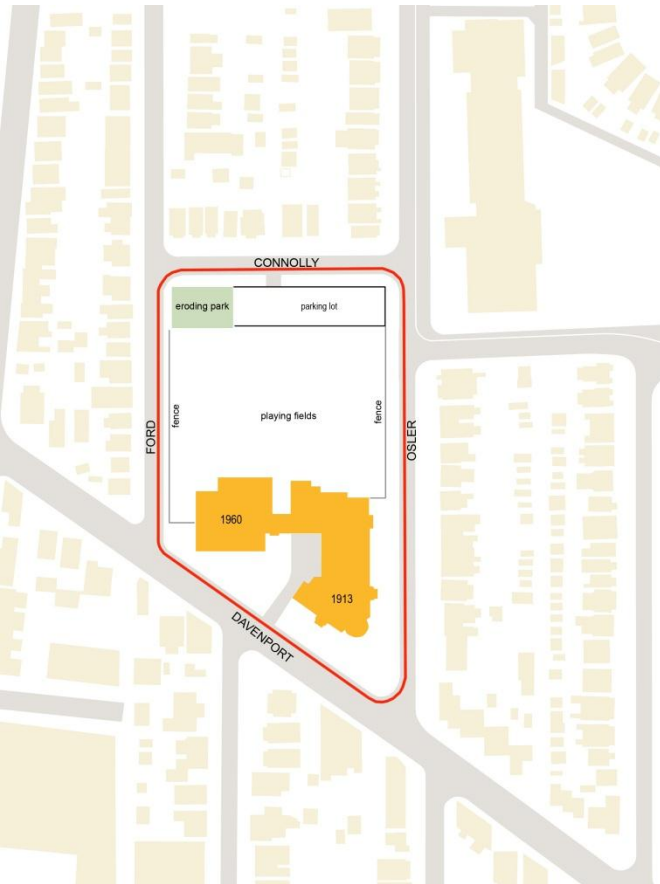


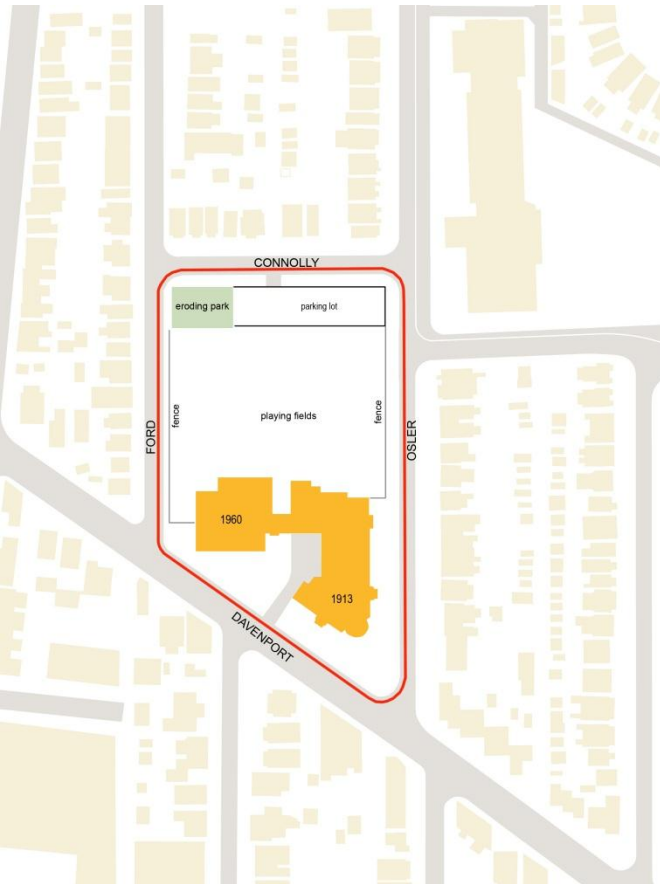


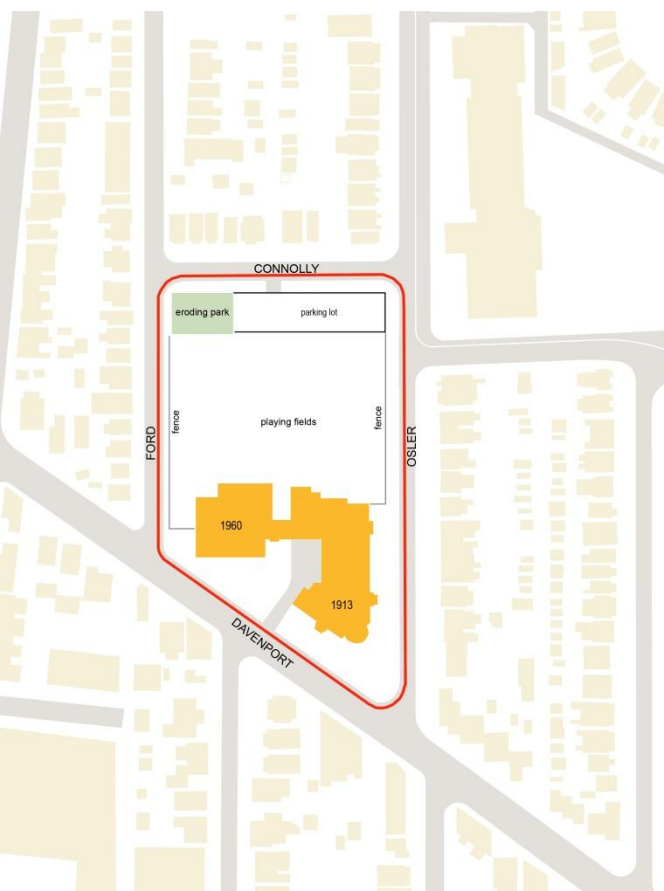


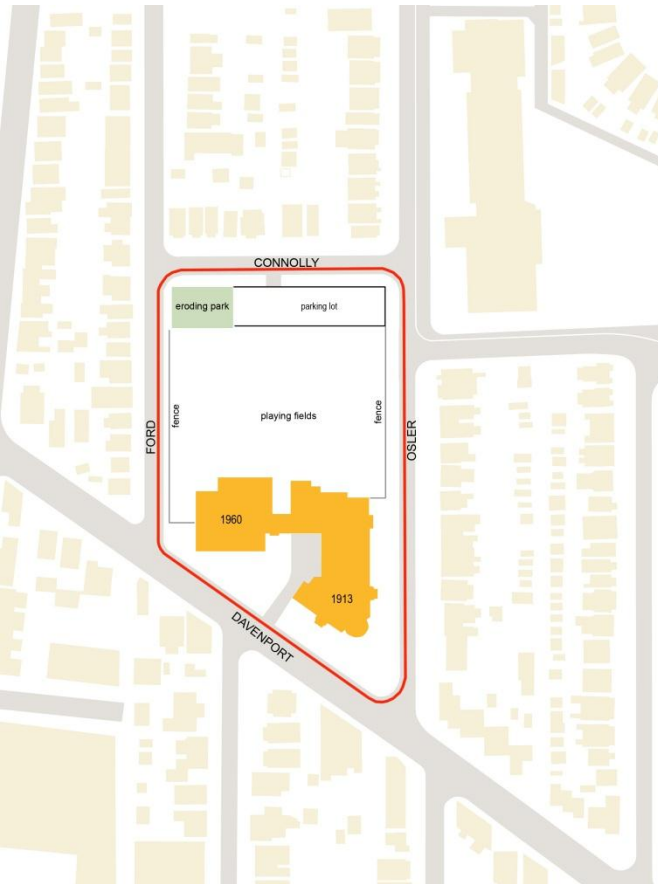
Heritage Advisory Group

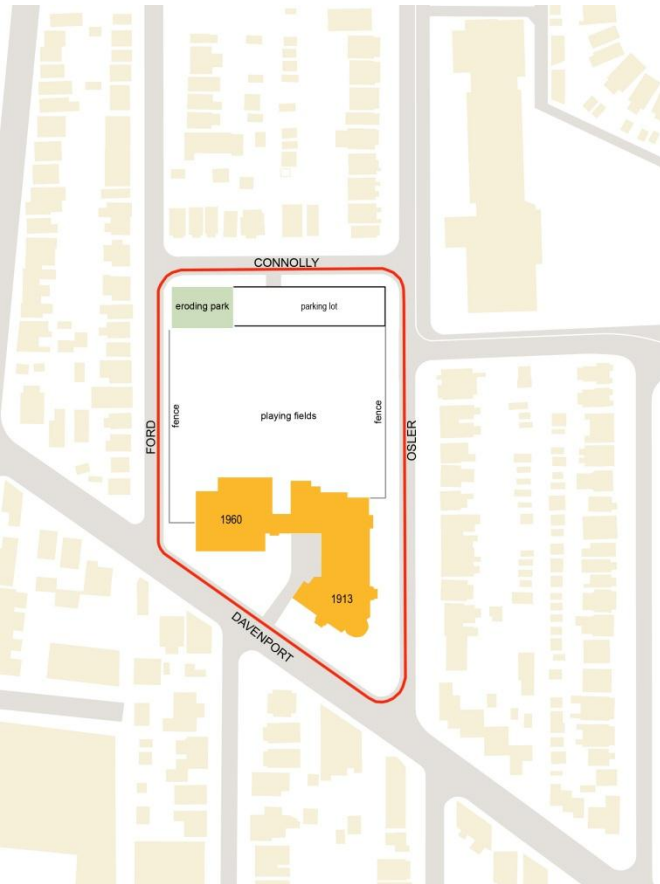
Carlton Village Residents' Association













Toronto Police Service
New 11 Division, 2054 Davenport Road
Heritage Advisory Group- March 27 2009

Heritage Advisory Group- March 27 2009
Stantec Architecture



Option 1

Toronto Police Service
New 11 Division, 2054 Davenport Road
Heritage Advisory Group- March 27 2009

Heritage Advisory Group- March 27 2009
Stantec Architecture



Option 1

Toronto Police Service
New 11 Division, 2054 Davenport Road
Heritage Advisory Group- March 27 2009

Heritage Advisory Group- March 27 2009
Stantec Architecture



Option 2

Toronto Police Service
New 11 Division, 2054 Davenport Road
Heritage Advisory Group- March 27 2009

Heritage Advisory Group- March 27 2009
Stantec Architecture



Option 3

Toronto Police Service
New 11 Division, 2054 Davenport Road
Heritage Advisory Group- March 27 2009

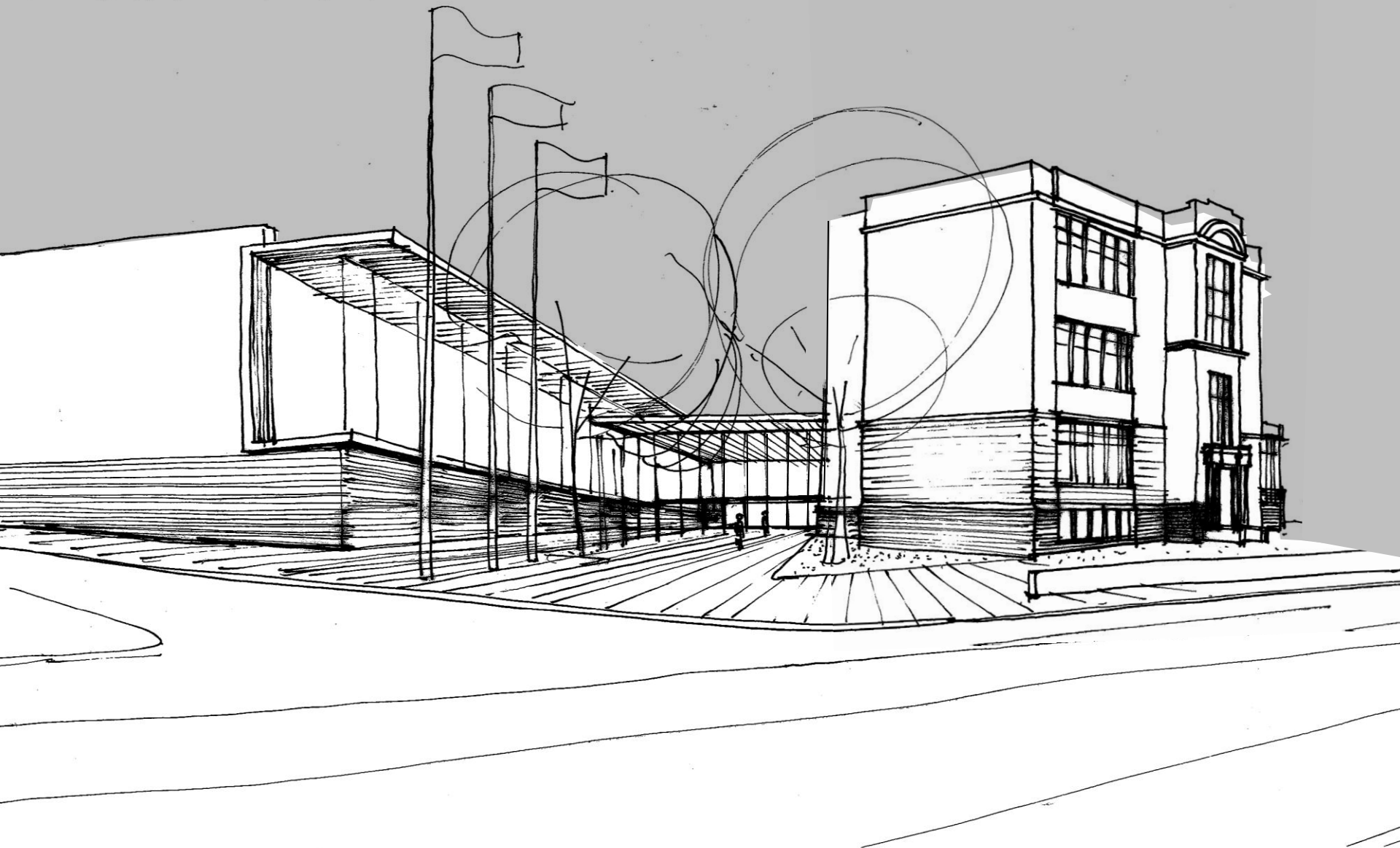
Heritage Advisory Group- March 27 2009
Stantec Architecture



Option 3

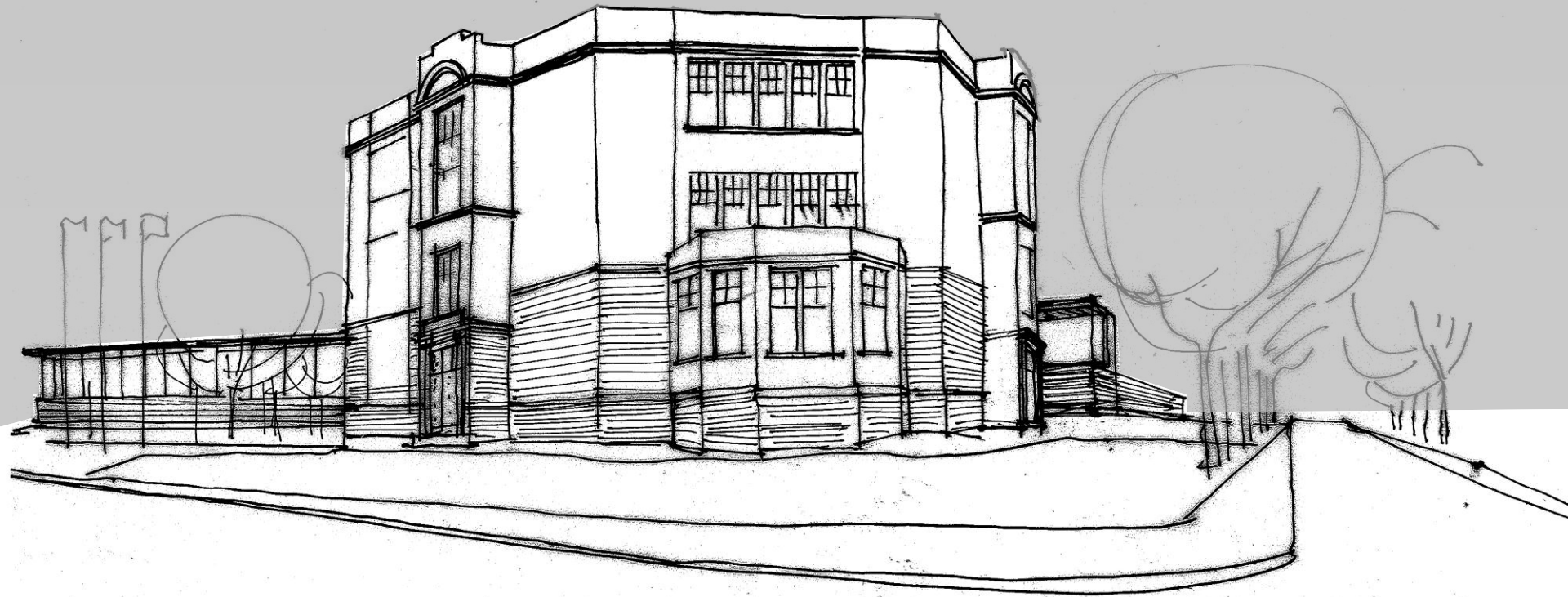
Toronto Police Service
New 11 Division, 2054 Davenport Road
Heritage Advisory Group- March 27 2009

Heritage Advisory Group- March 27 2009
Stantec Architecture



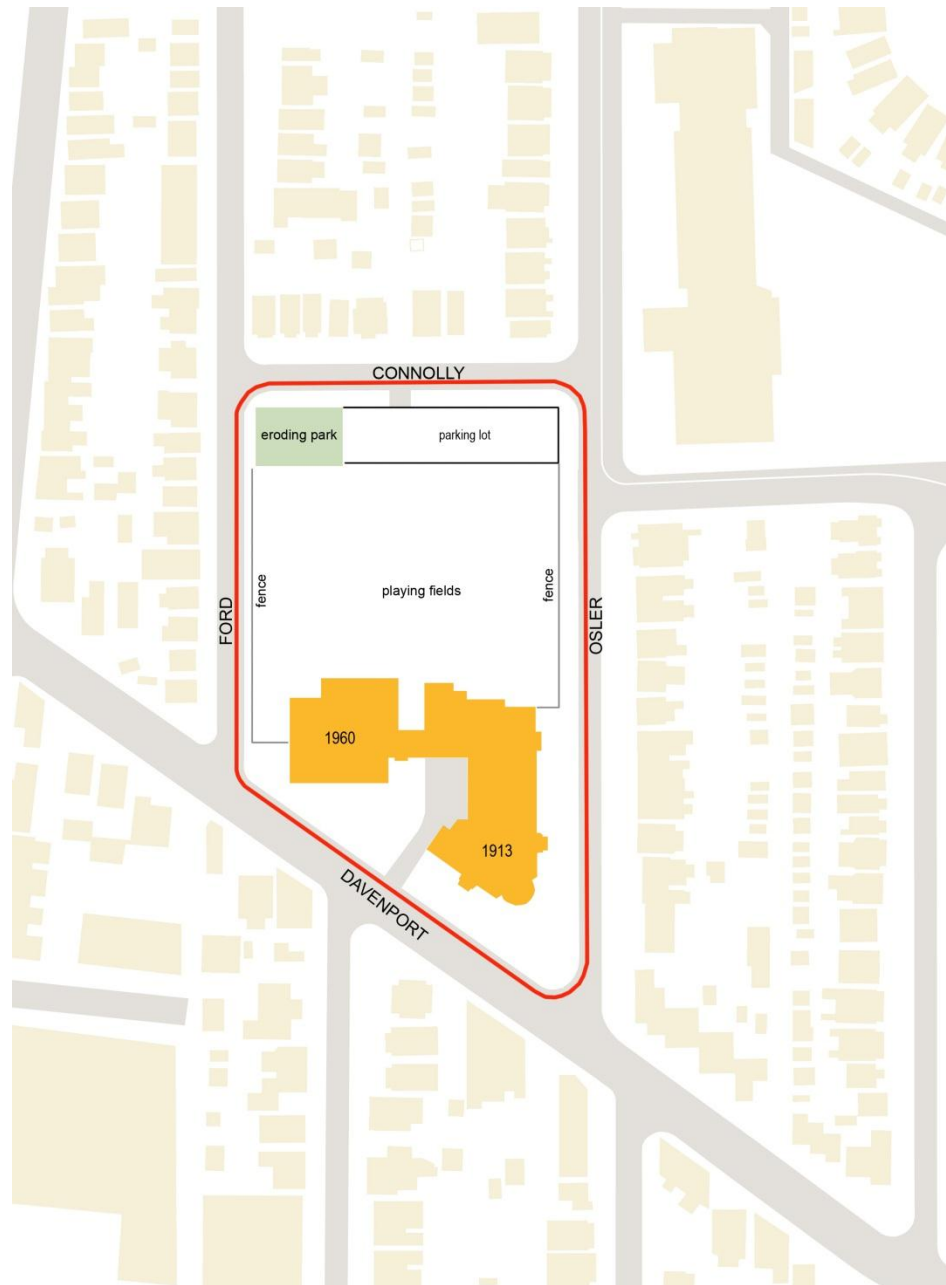
Toronto Police Service
New 11 Division, 2054 Davenport Road

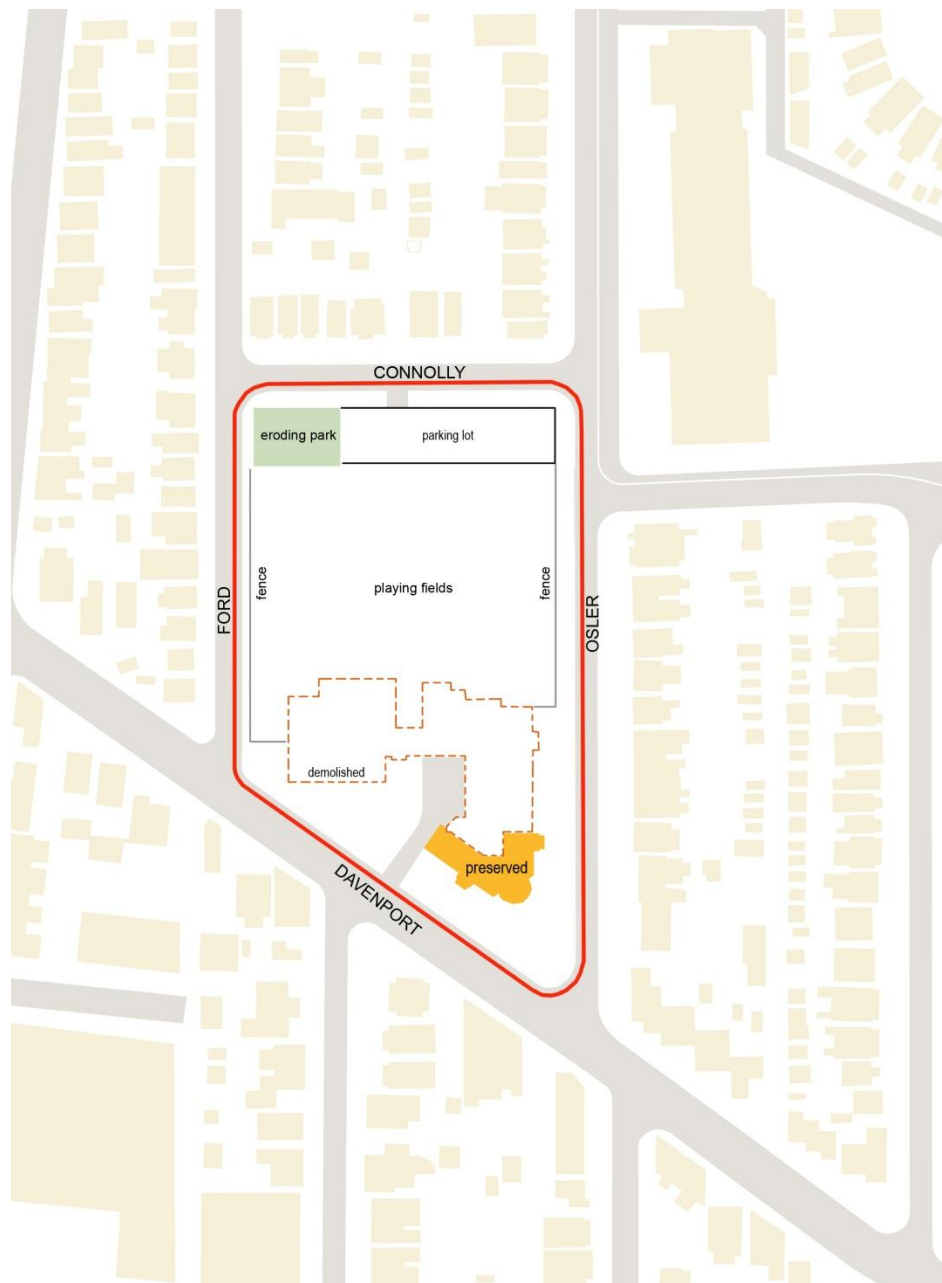
Community Meeting March 31 2009
Stantec Architecture

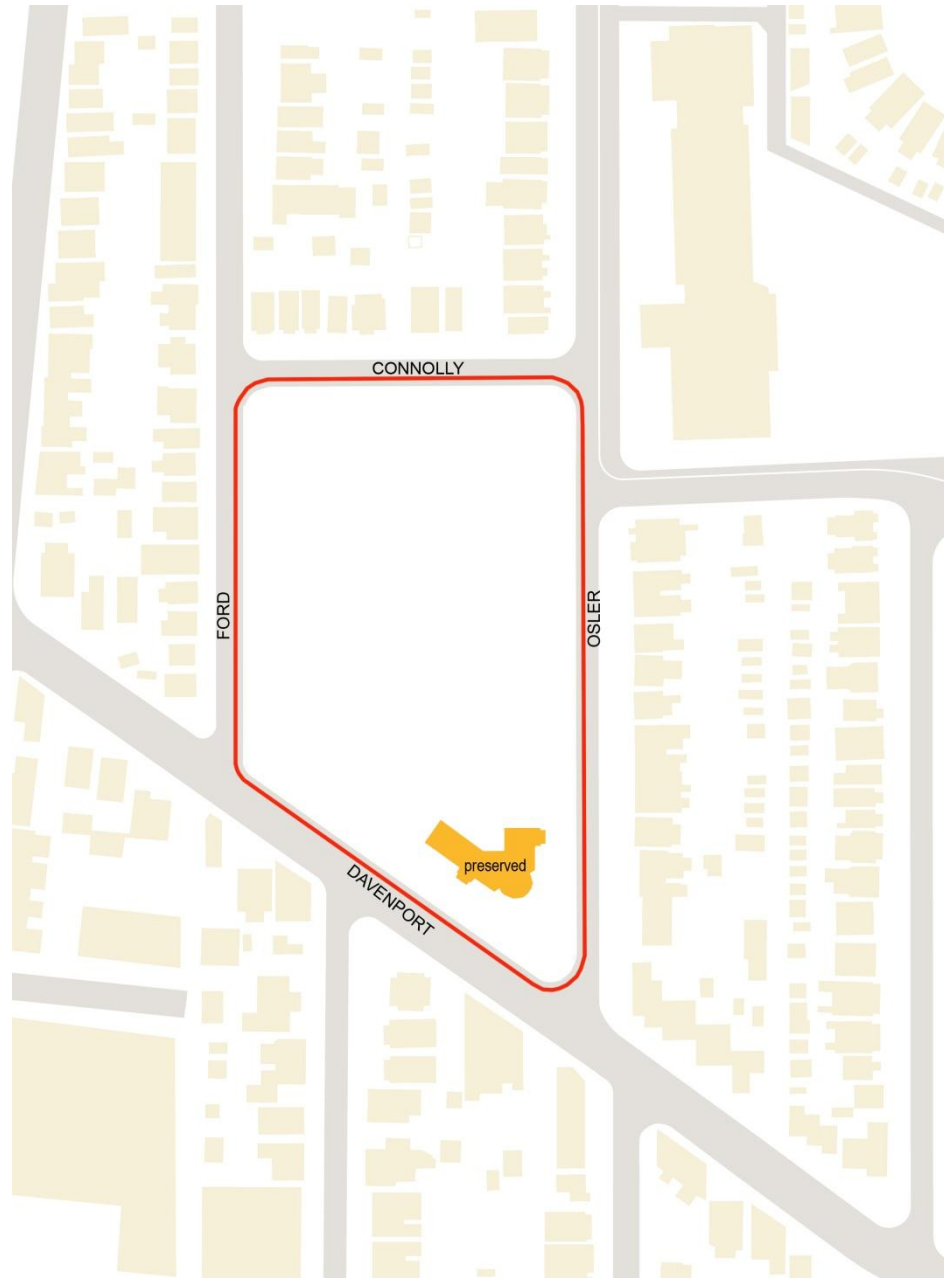


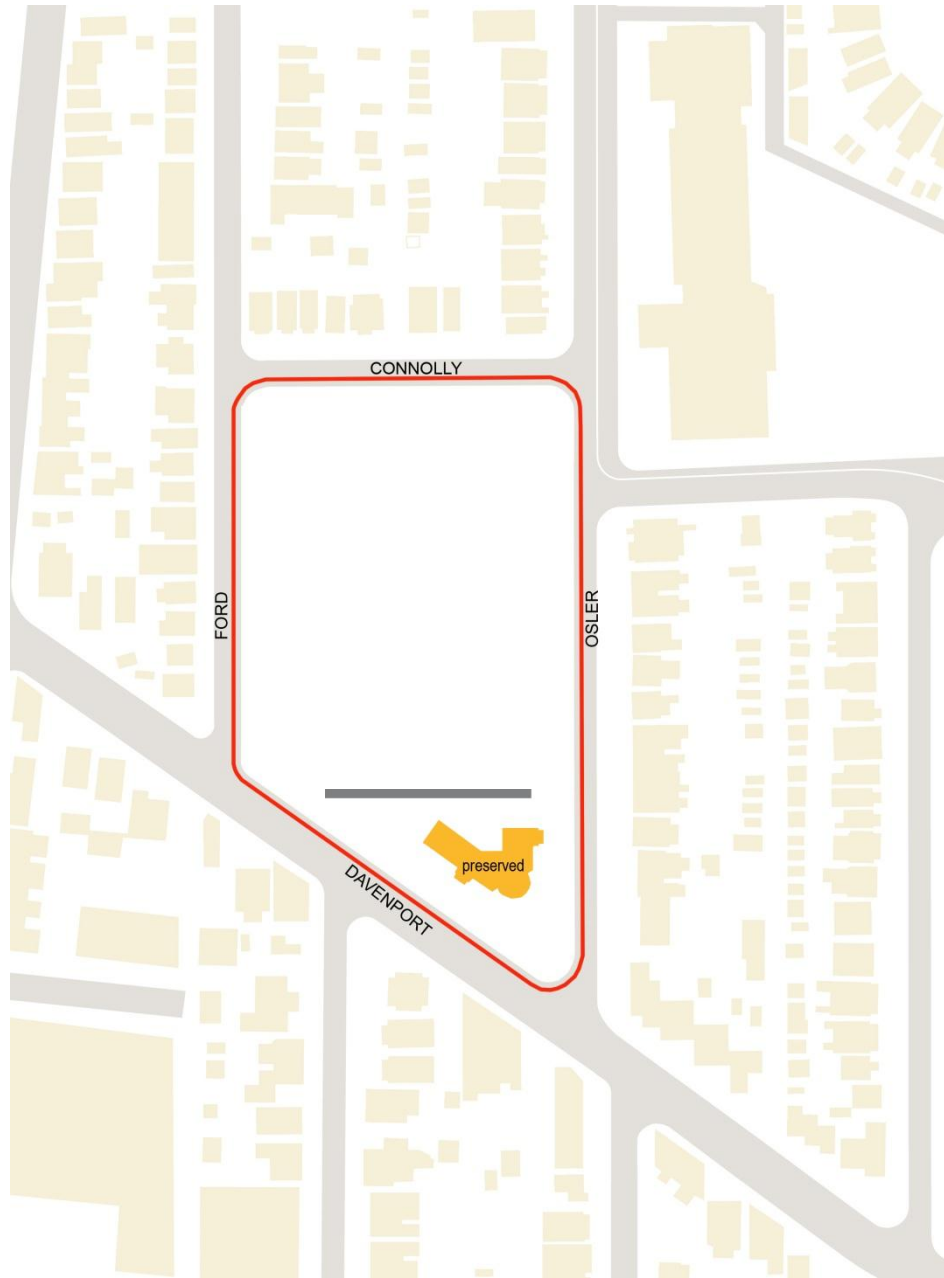
Toronto Police Service
New 11 Division, 2054 Davenport Road

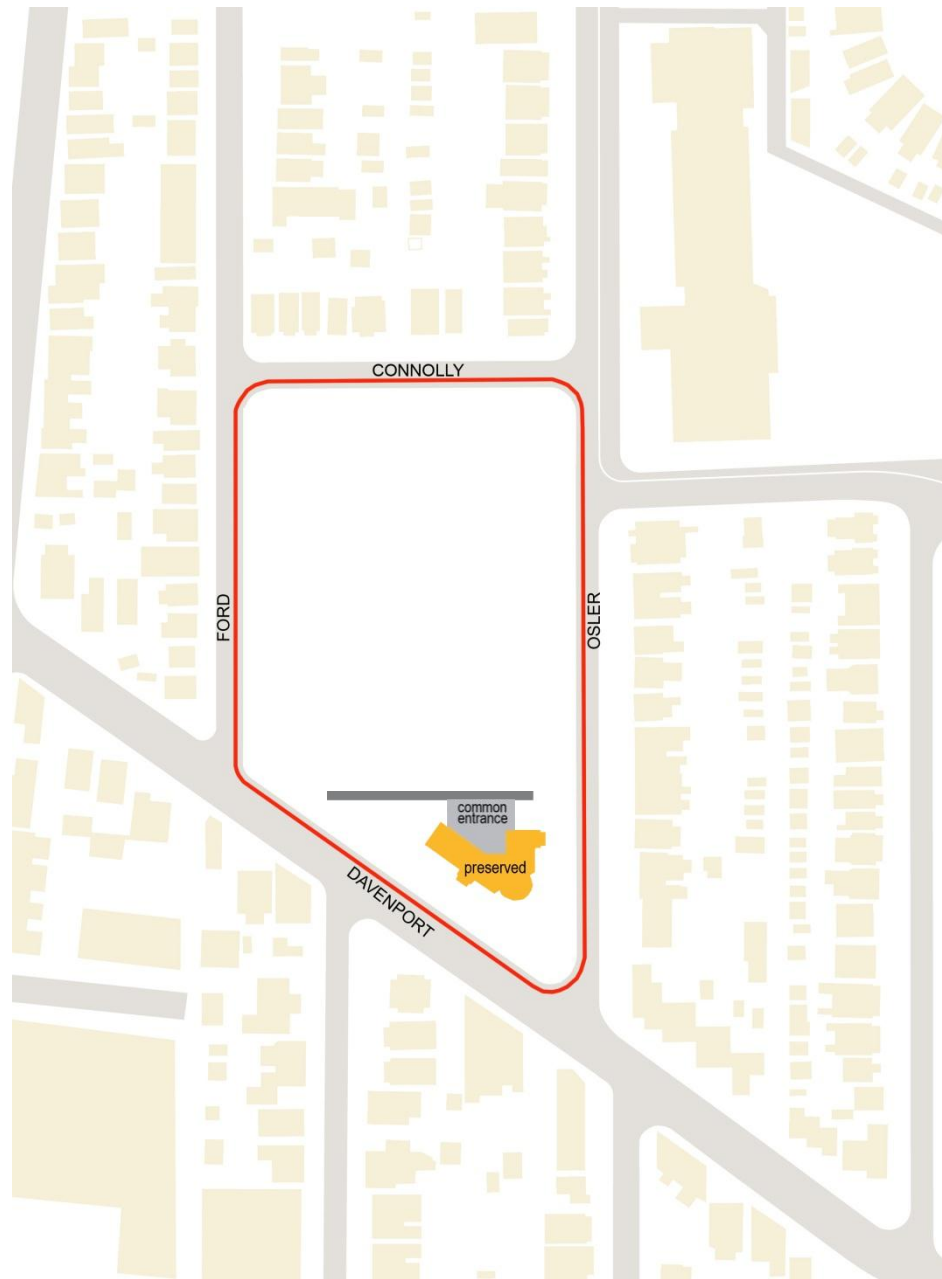
Community Meeting March 31 2009
Stantec Architecture

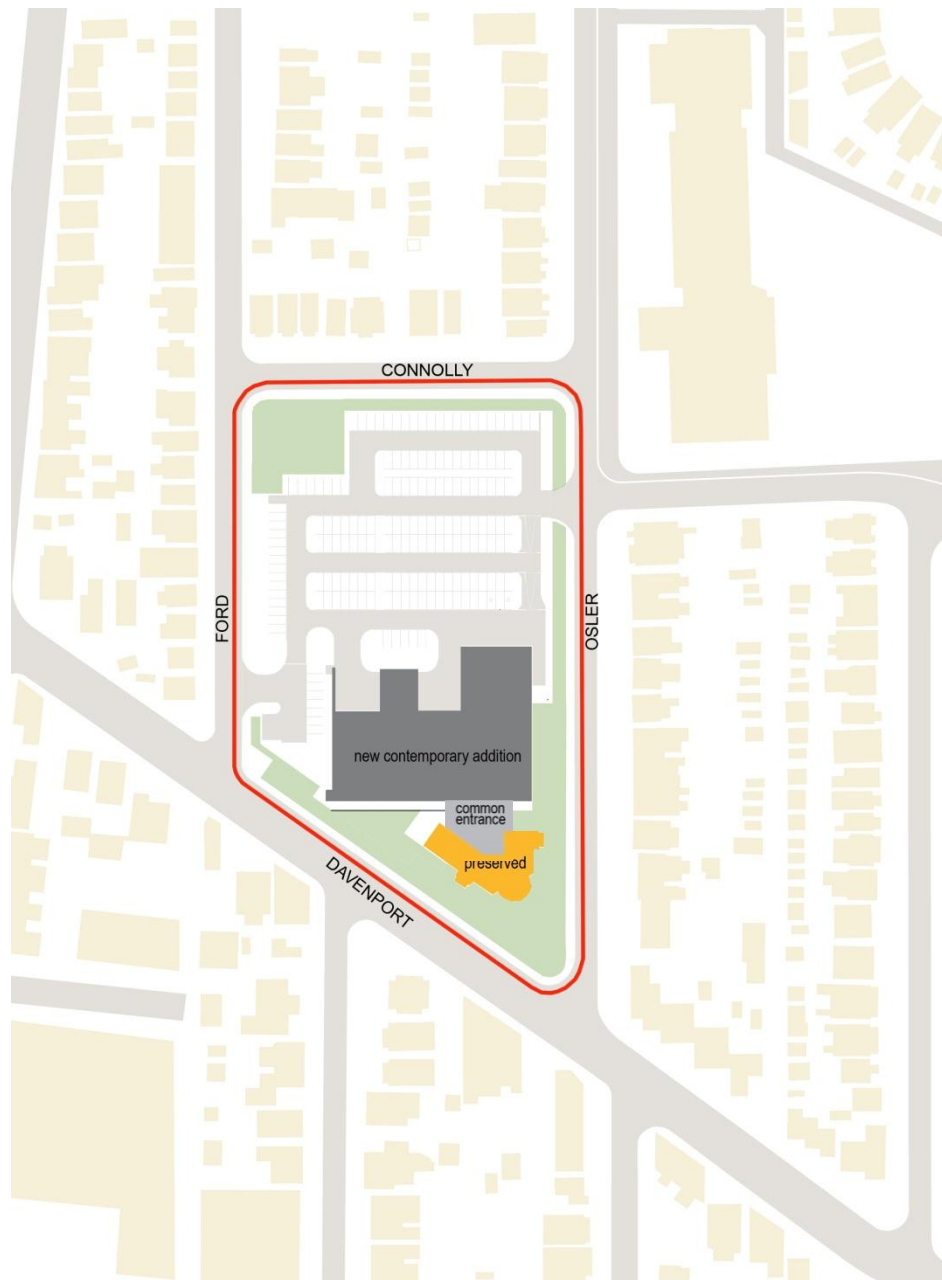






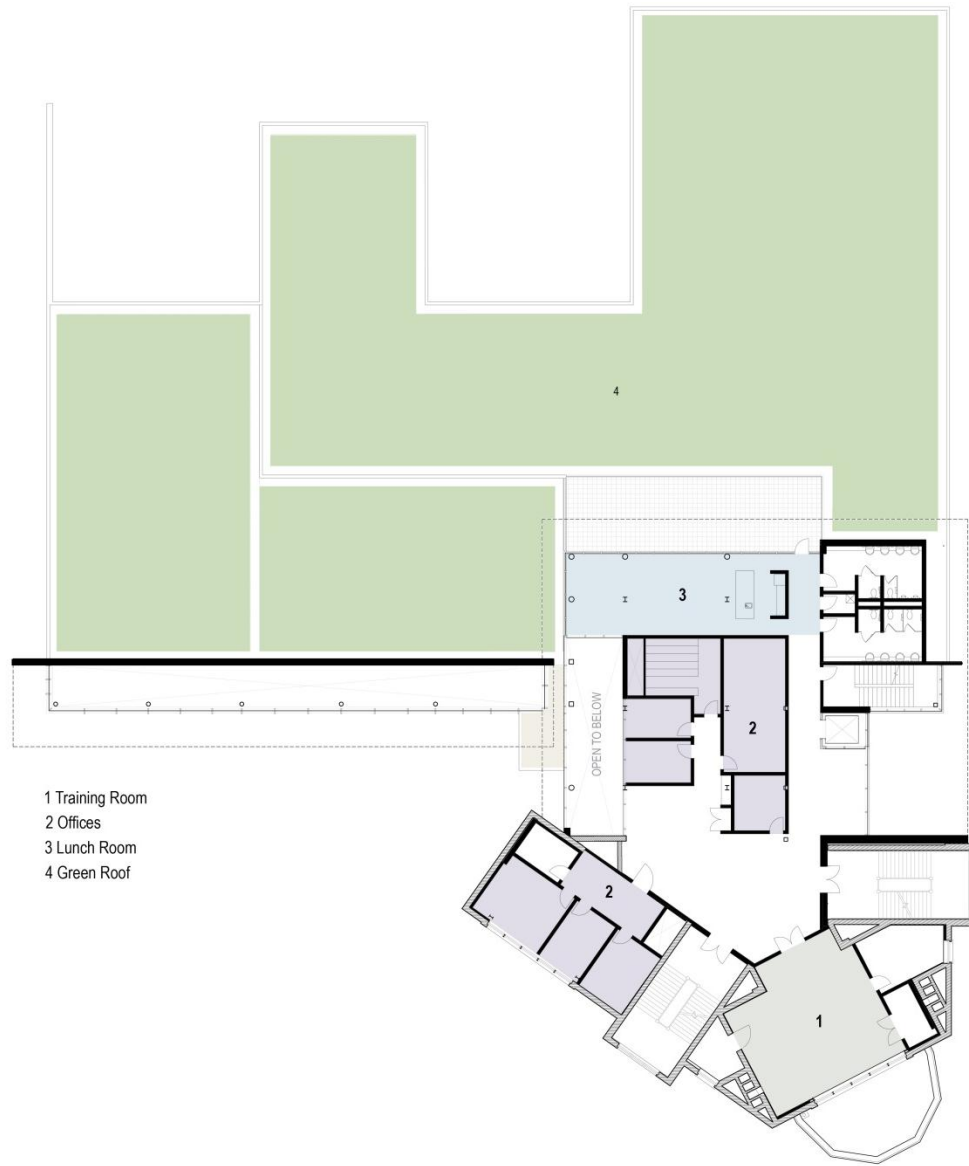




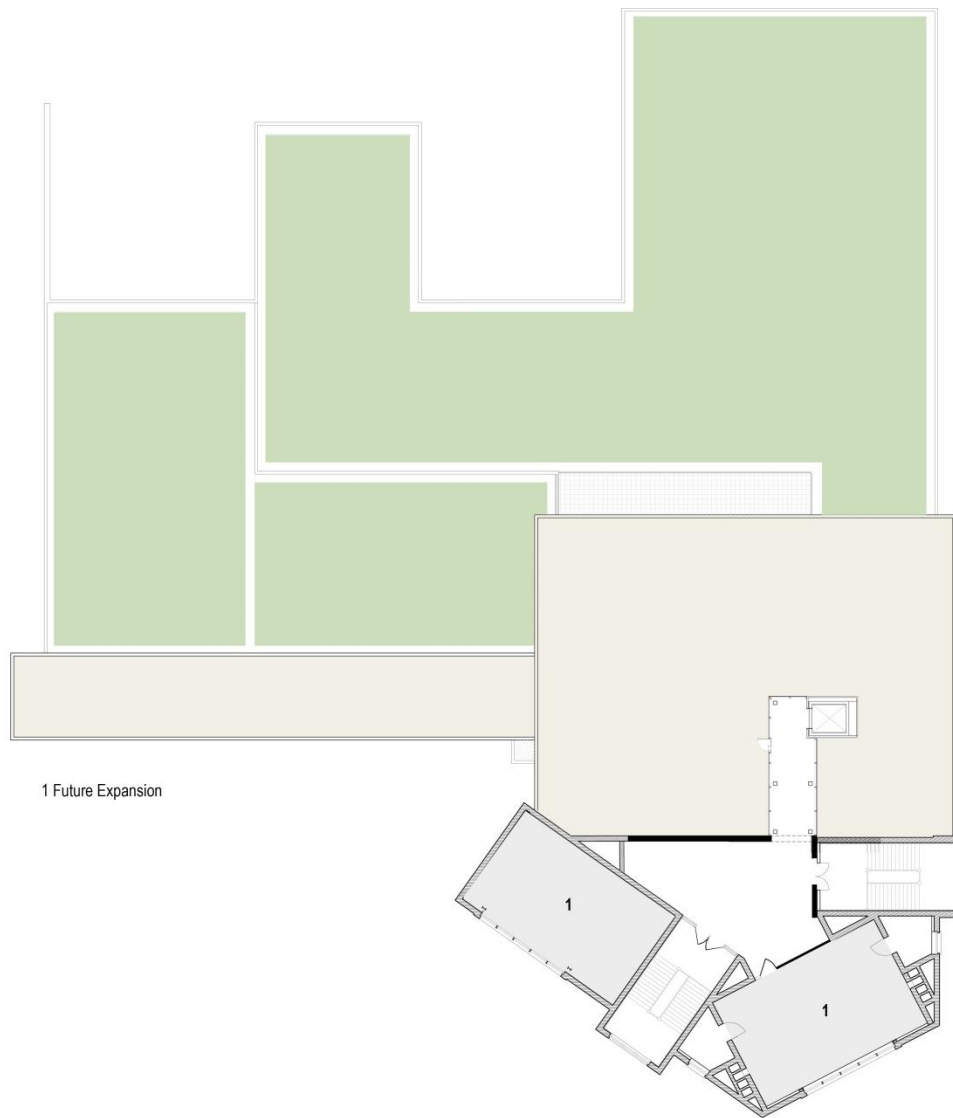




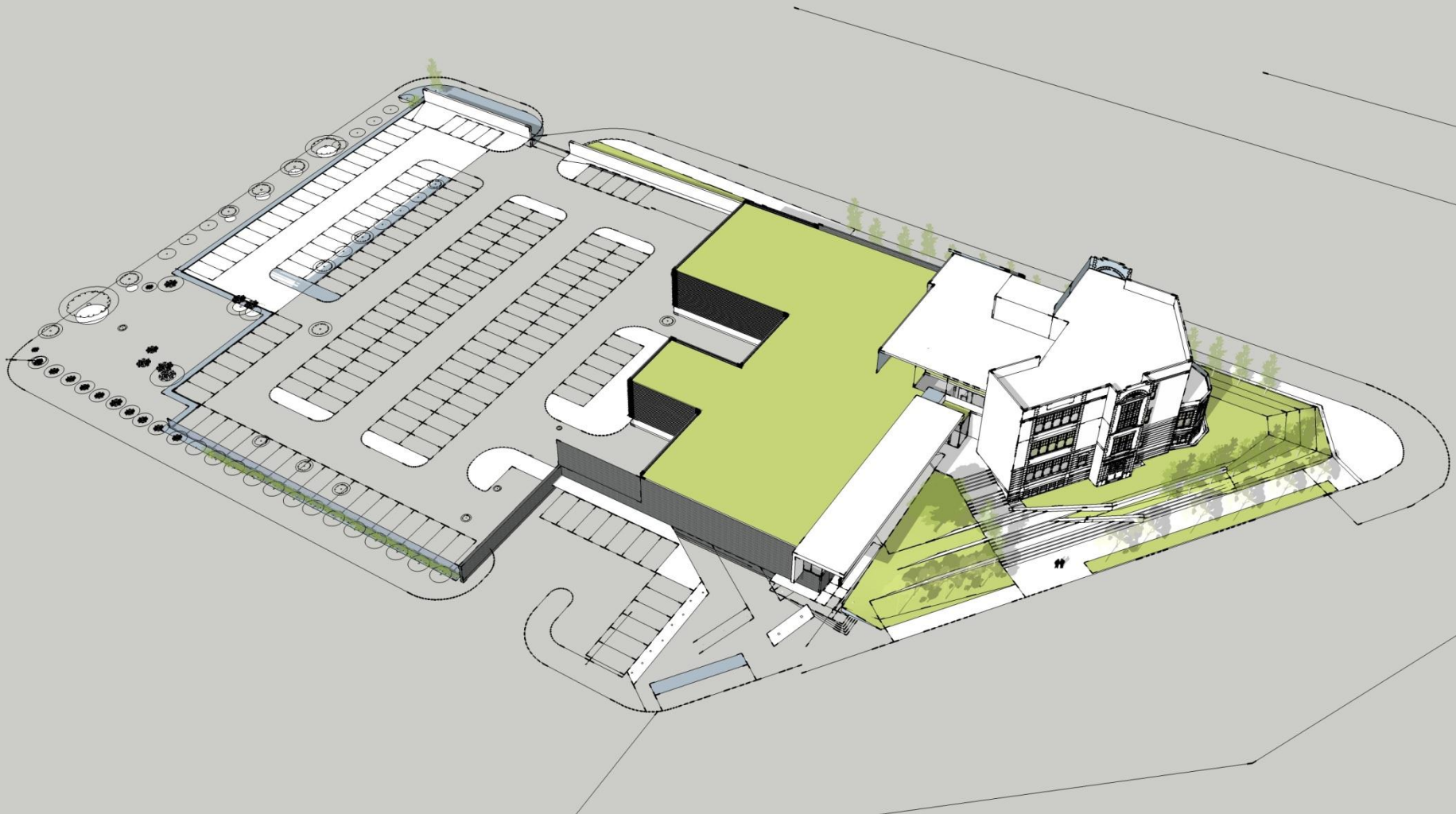




- 1 Training Room
- 2 Offices
- 3 Lunch Room
- 4 Green Roof



1 Future Expansion



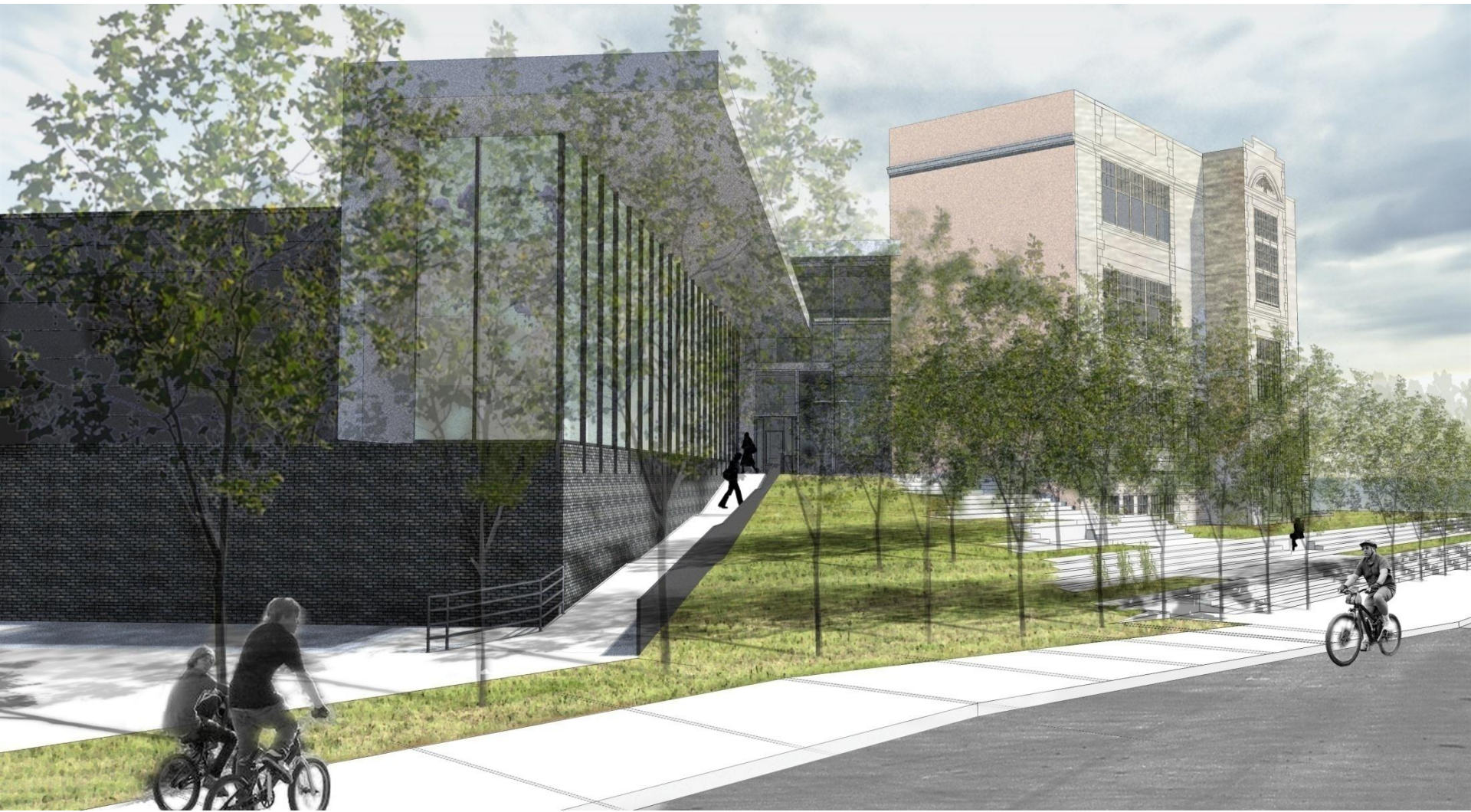






division 11

Overall View



division 11

Main Entrance

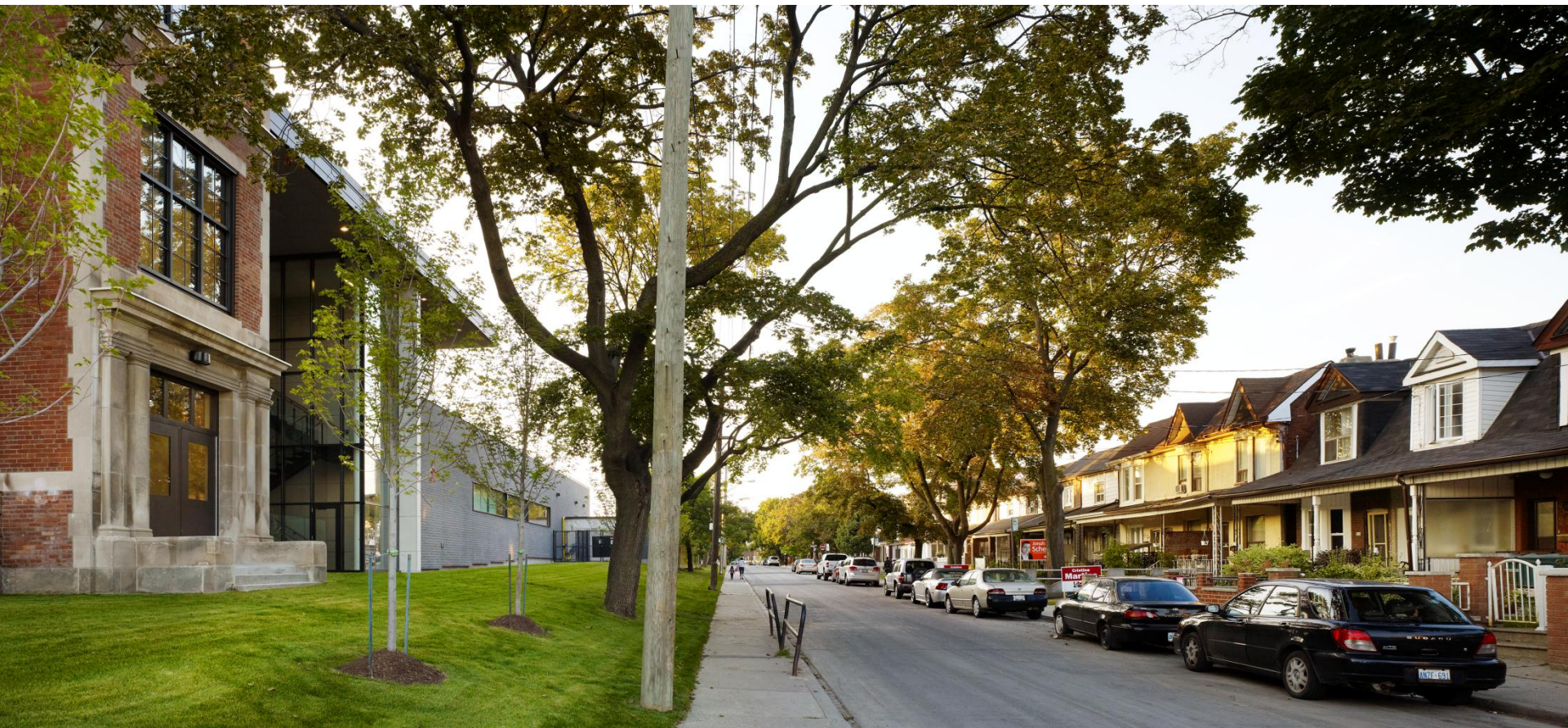








TORONTO POLICE SERVICE
11 DIVISION





















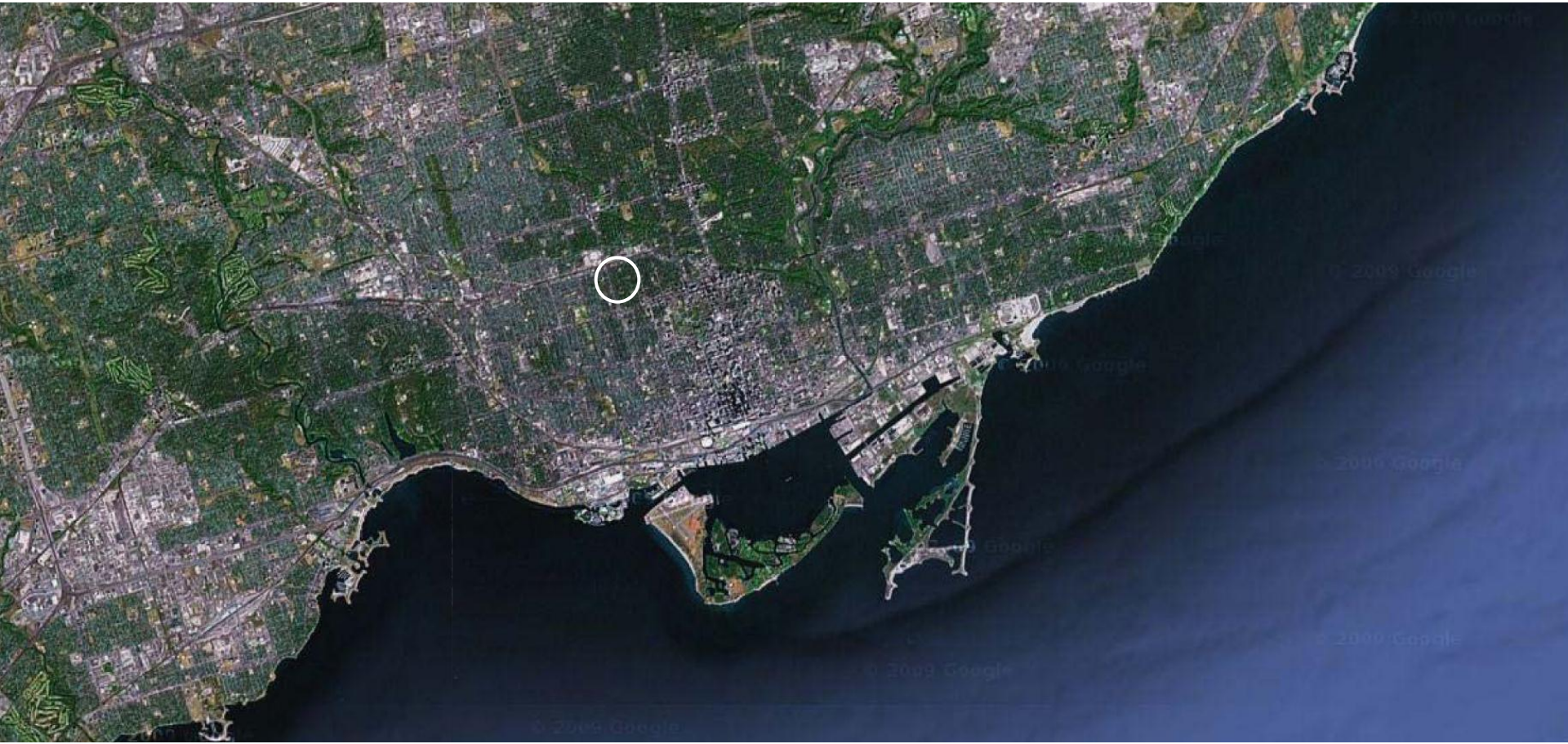






CASE STUDY

TORONTO POLICE SERVICES 14 DIVISION



Site Context



Site Context



Vehicular Circulation

— Roads



Vehicular Circulation

— Roads
— Lanes



Dovercourt Road Perspective



St. Annes Road Perspective



Coolmine Road Perspective



Southern Perspective



OVERVIEW





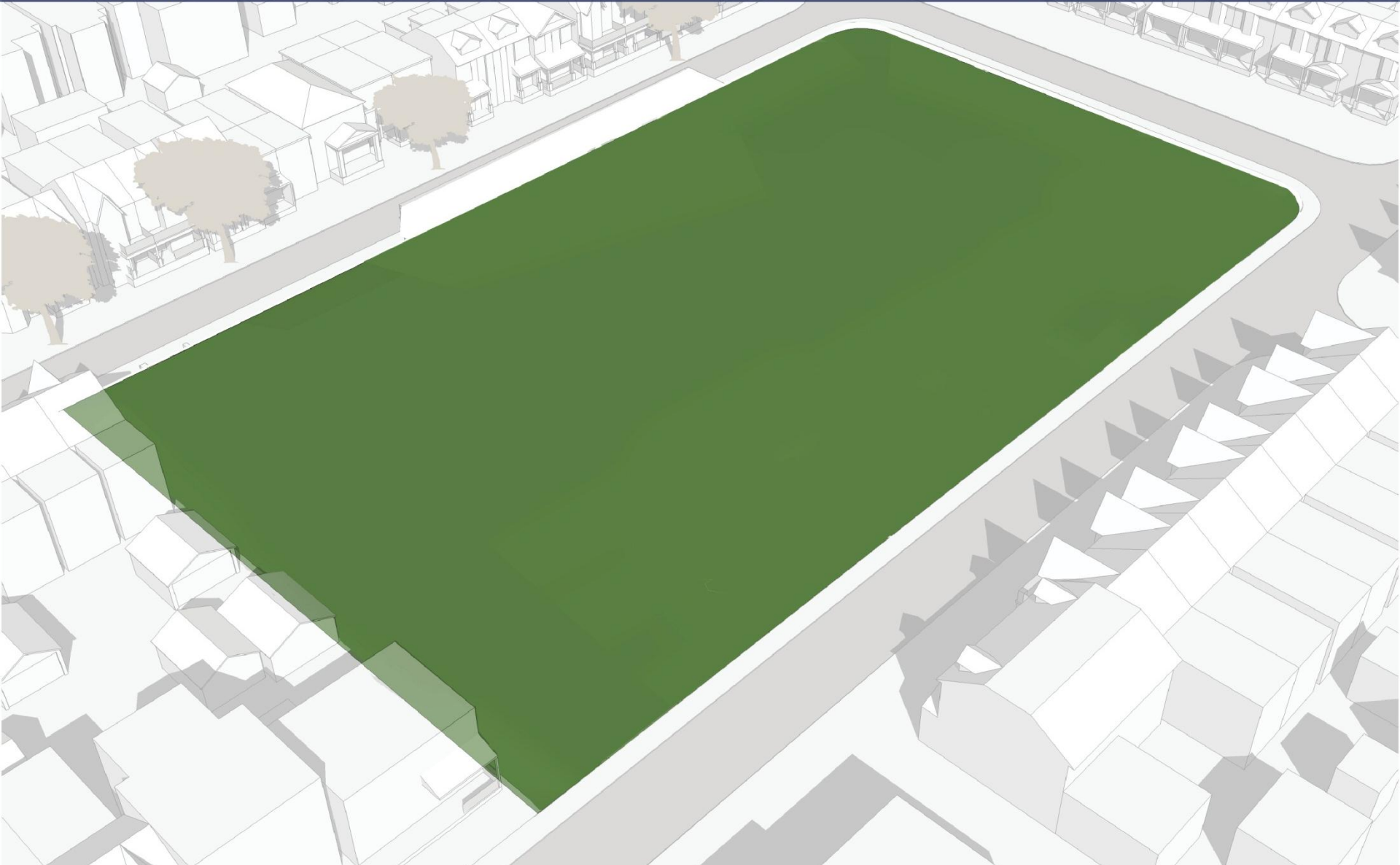
Community Participation:

- Heydon Park Residents Association represented on design committee
- Lakeview Avenue Residents represented on design committee
- Community Police Liaison Committee (CPLC) represented on design committee

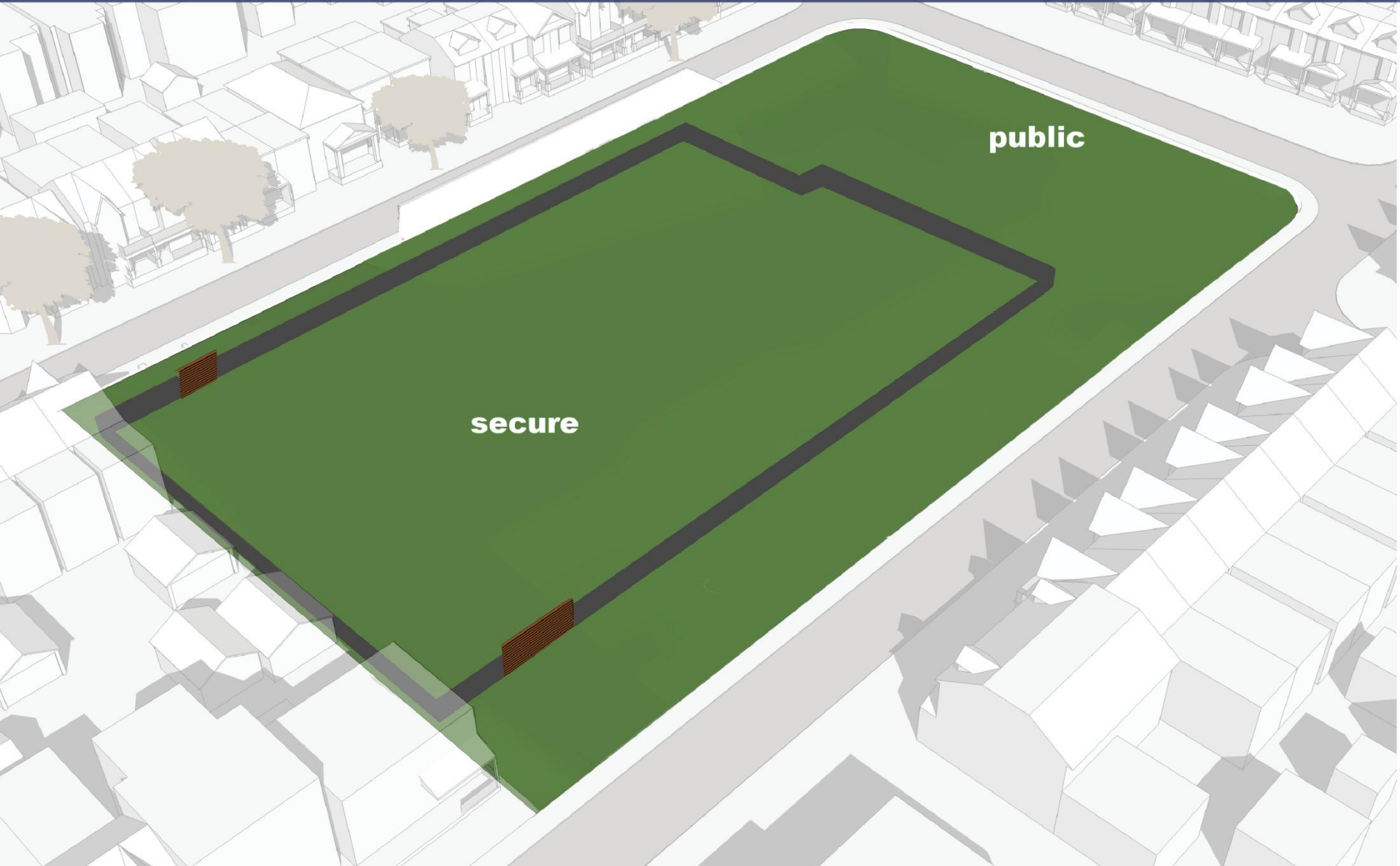
Concerns:

- Loss of public outdoor space
- Preserving mature trees
- Respecting the neighborhoods residential scale
- Minimizing traffic impact

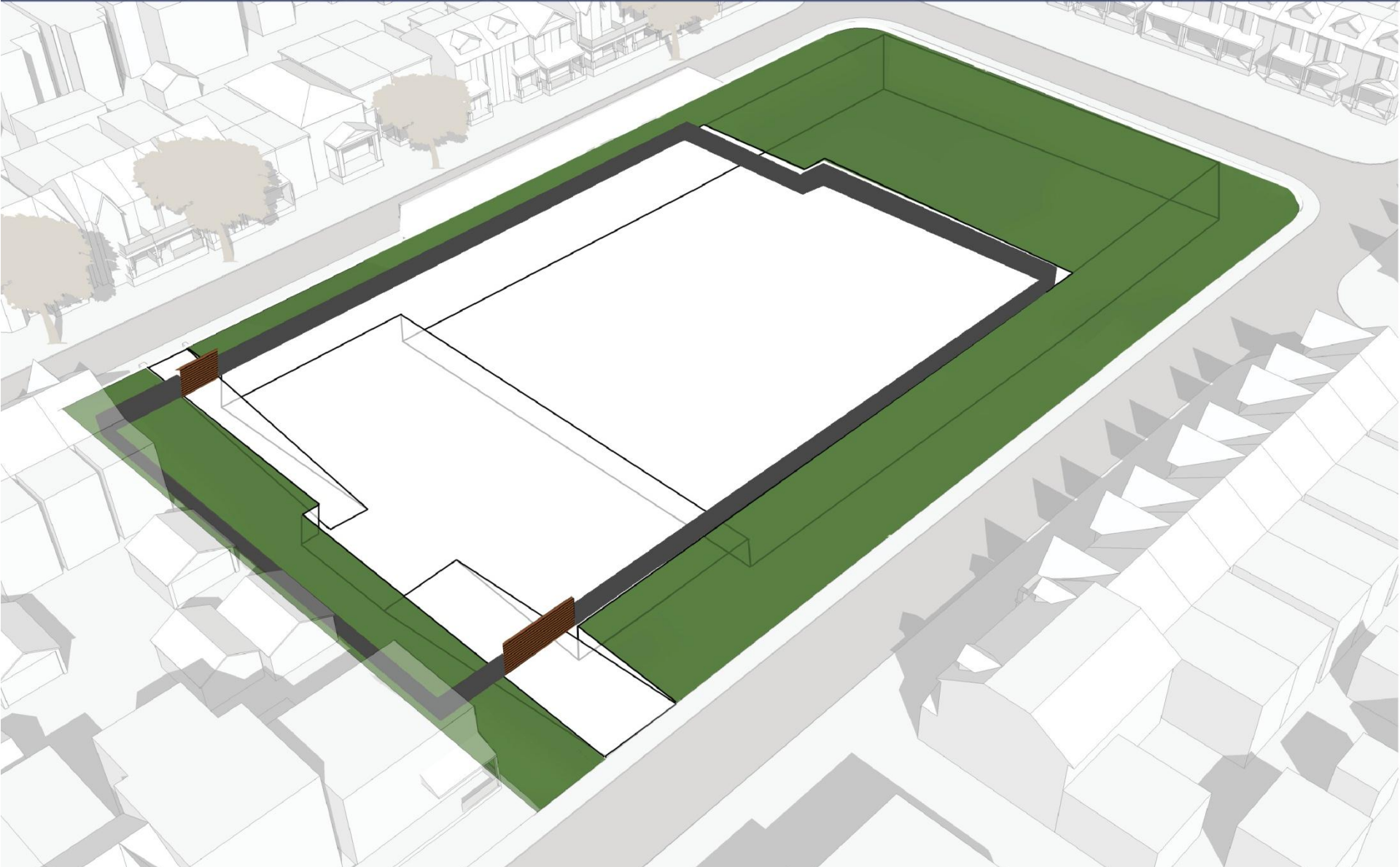
Concept: Site



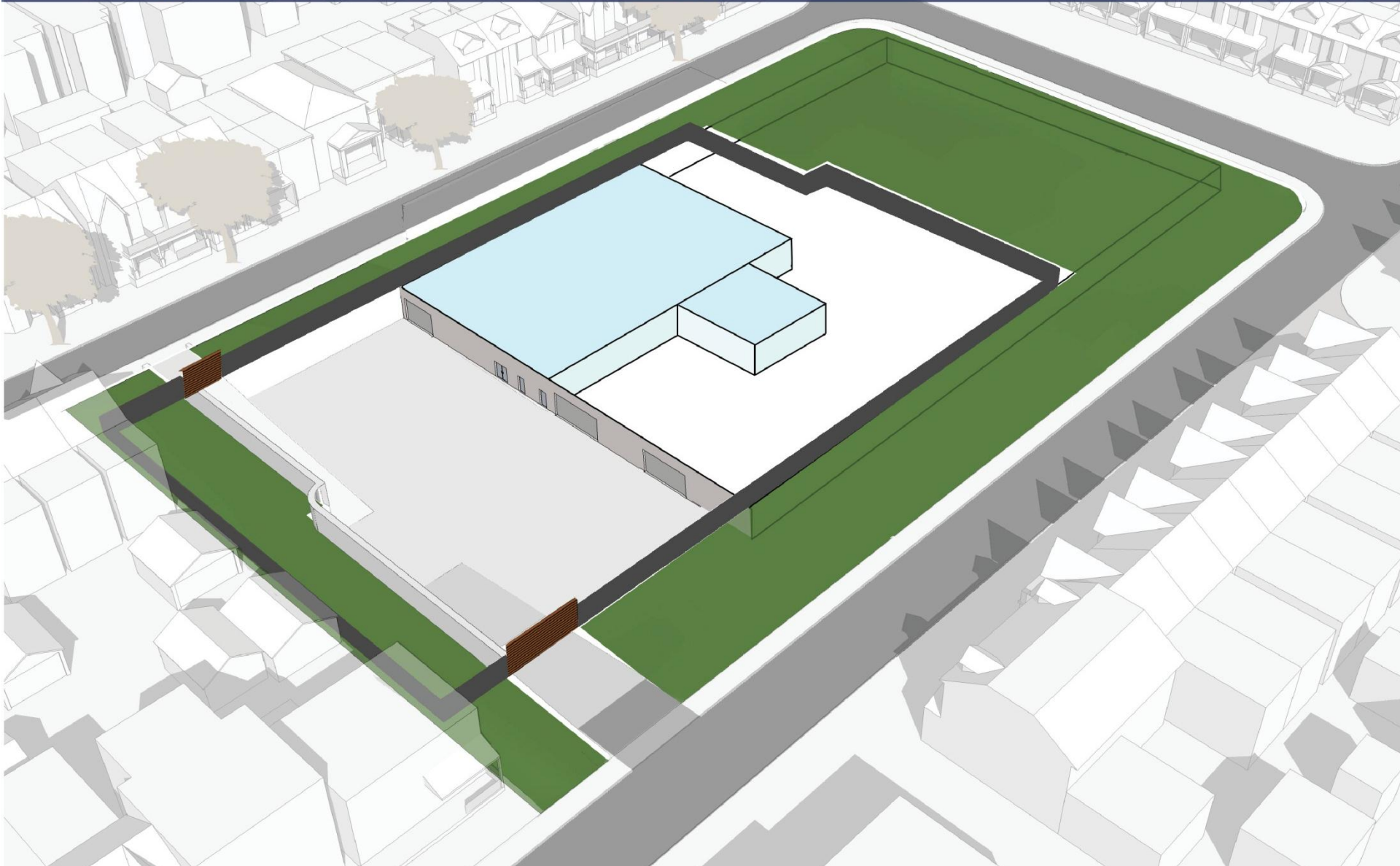
Concept: Public vs. Secure



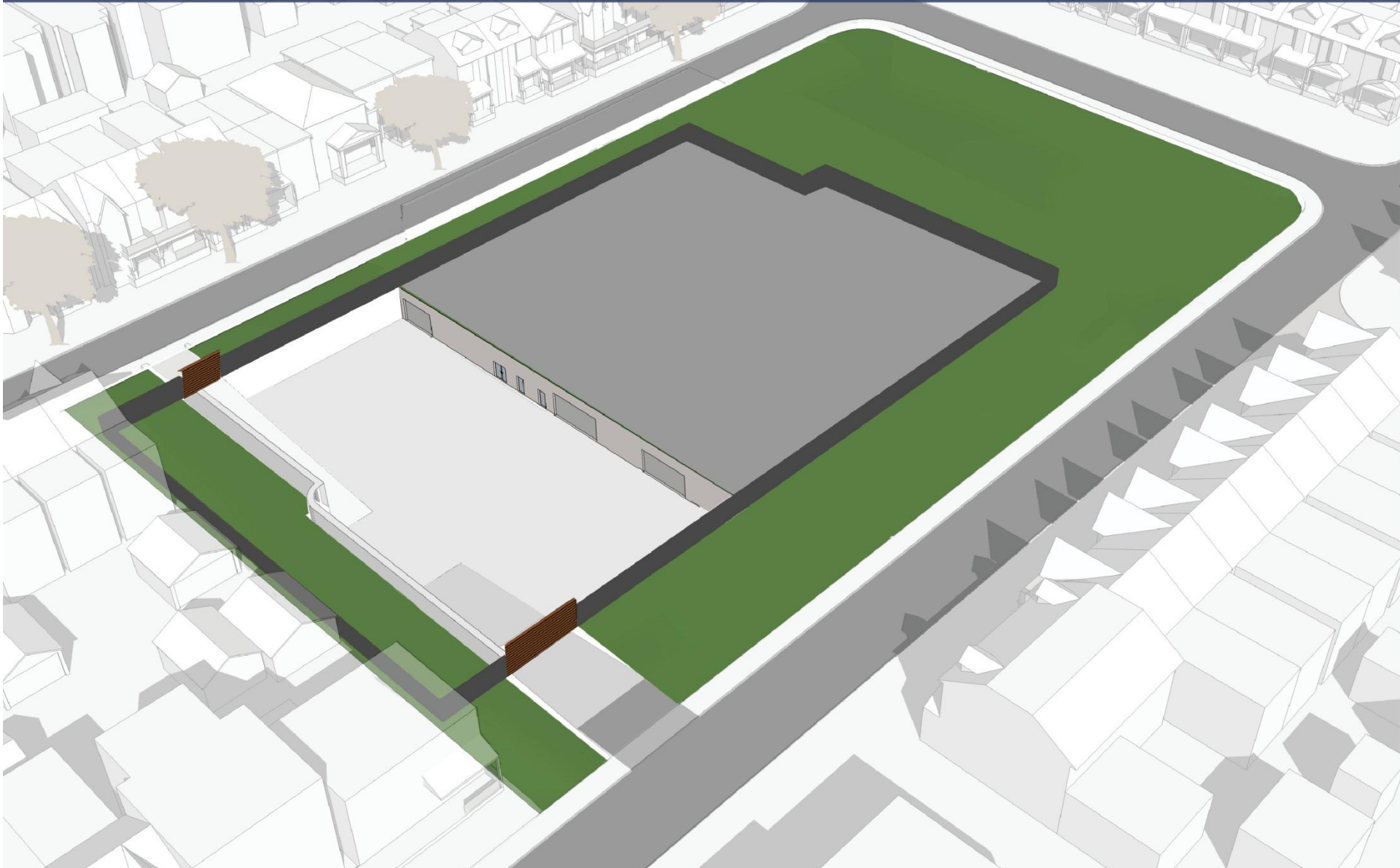
Concept: Underground Parking



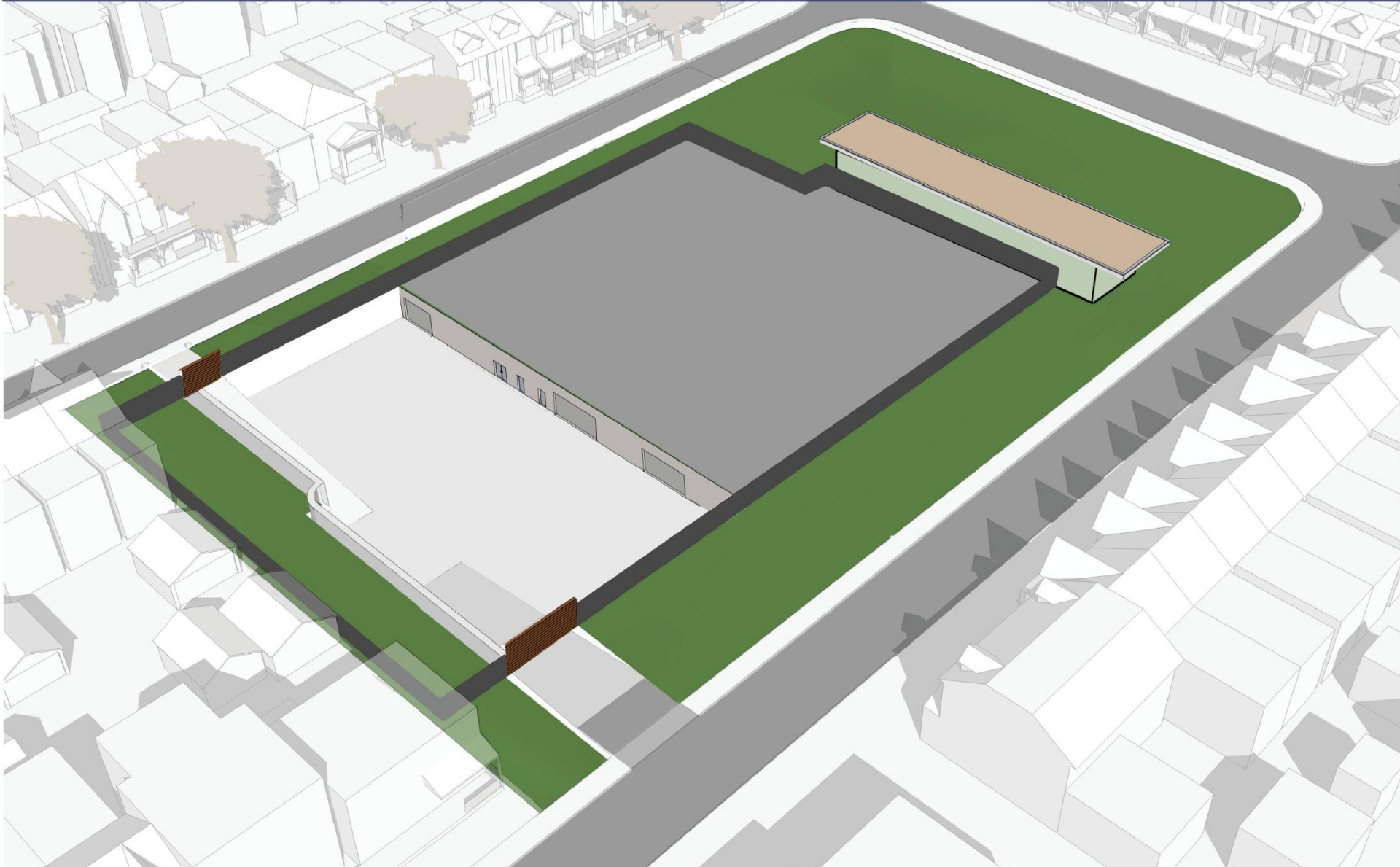
Concept: Detention and Sallyport



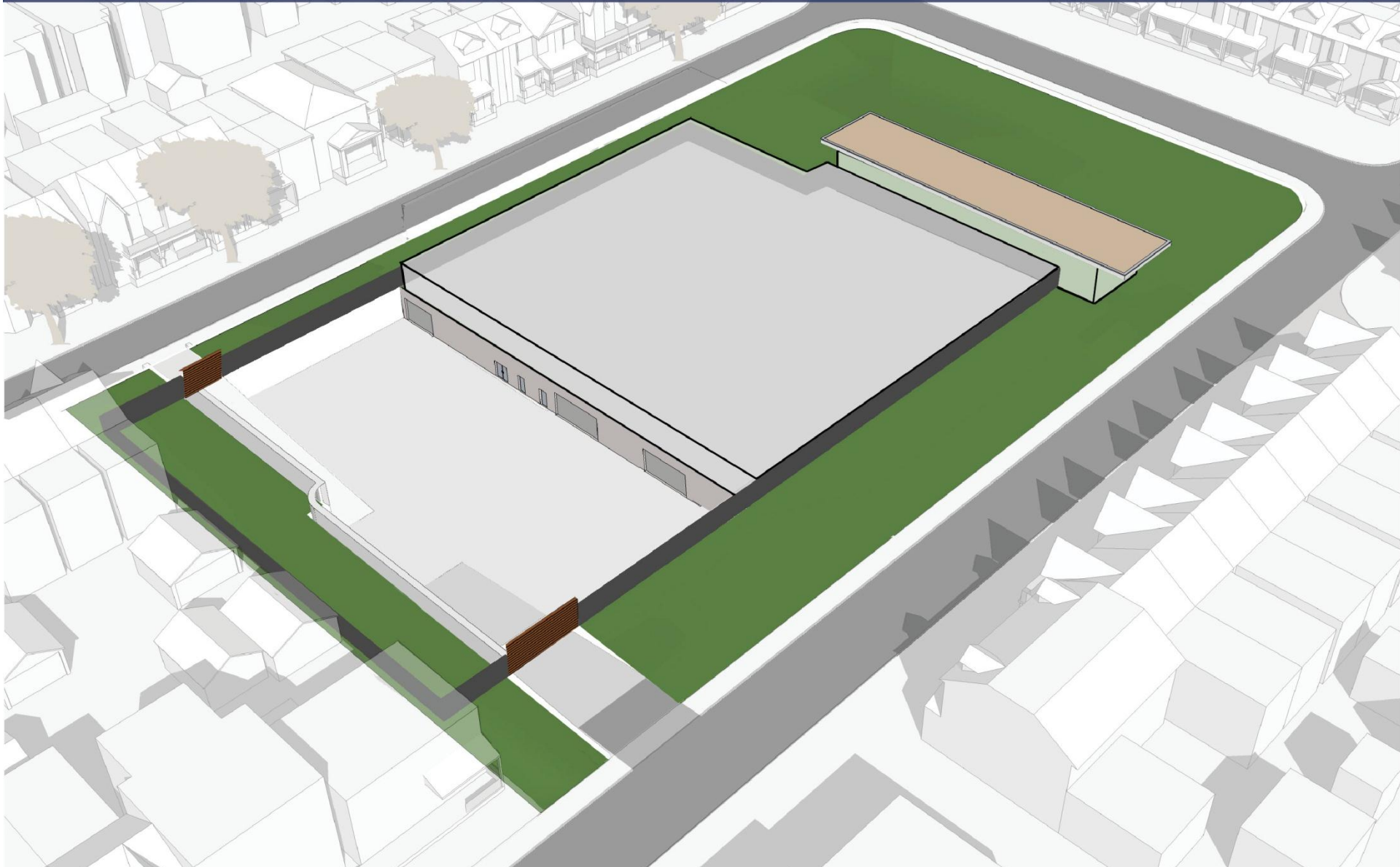
Concept: Ground Plane



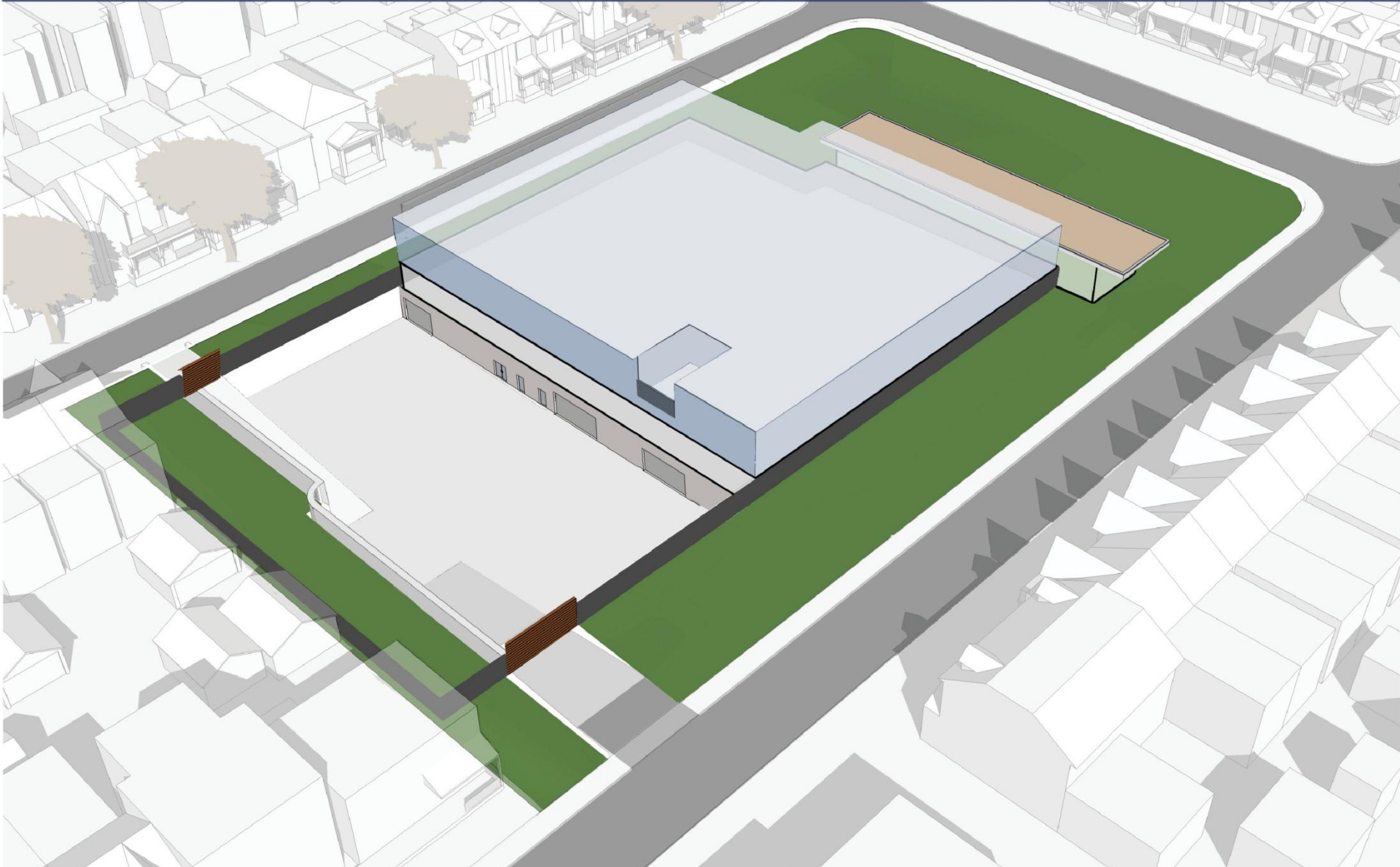
Concept: Public Zone



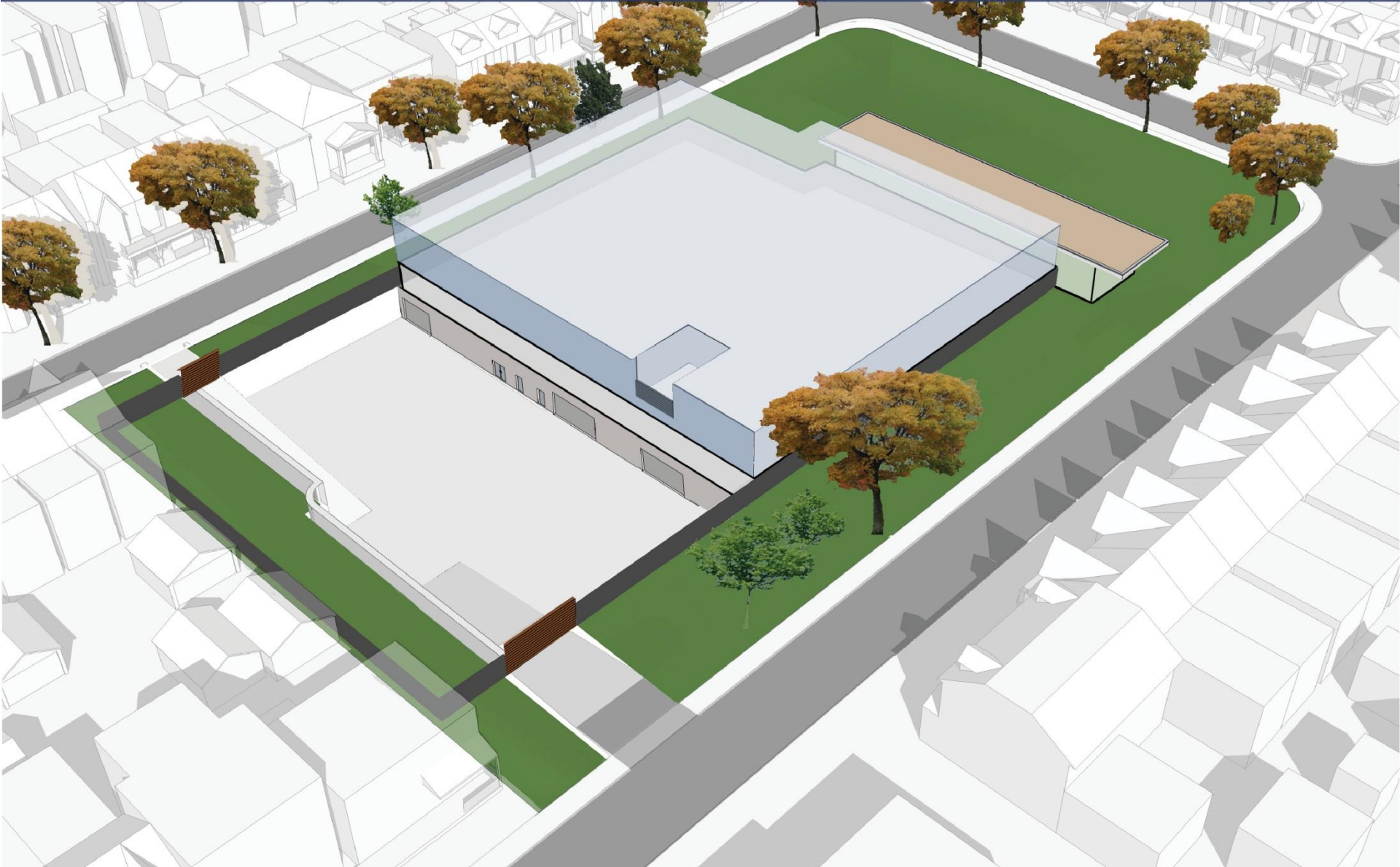
Concept: Level 1 Operations



Concept: Level 2 Operations



Concept: Existing Landscape



















| |
|-------|
| Scout |
| 1407 |
| 1411 |
| 1412 |
| 1413 |
| 1421 |
| 1422 |
| 1431 |
| 1432 |
| 1441 |
| 1442 |
| 1451 |
| 1452 |
| 1461 |
| 1462 |
| BCU14 |































Community Engagement in Design for Law Enforcement

Stantec **Architecture**

Michael Ellis

Manager, Facilities Management, Toronto Police Services

Michael Moxam

Principal, Stantec Architecture

Tom Kyle

Associate, Stantec Architecture

Community Engagement in Design for Law Enforcement

2012 AAJ Fall Conference:

Stantec Architecture

Michael Ellis

Manager, Facilities Management, Toronto Police Services

Michael Moxam

Vice-President, Stantec Architecture

Tom Kyle

Associate, Stantec Architecture



Heritage Advisory Group



Design Steering Committee

Jumpin' Junction

It's the place in Toronto where all routes meet, but it's lain derelict for years. Now The Junction has traded in urban decay for urbanity. *C'est le carrefour de Toronto où convergent tous les chemins. À l'abandon pendant longtemps, The Junction semble enfin avoir trouvé sa voie.*

Neighbourhood/Le voisinage

The community was invited into the city's newest police station to see the building they helped make a reality.

Toronto Police Service
Non-Emergency 416-908-2222 - Emergency 9-1-1



...Blair was there for the unveiling. "We want to be good neighbours," he said. "We're trying to respect your neighbourhood, respect its history and create a new history, a new public space that belongs to everyone."

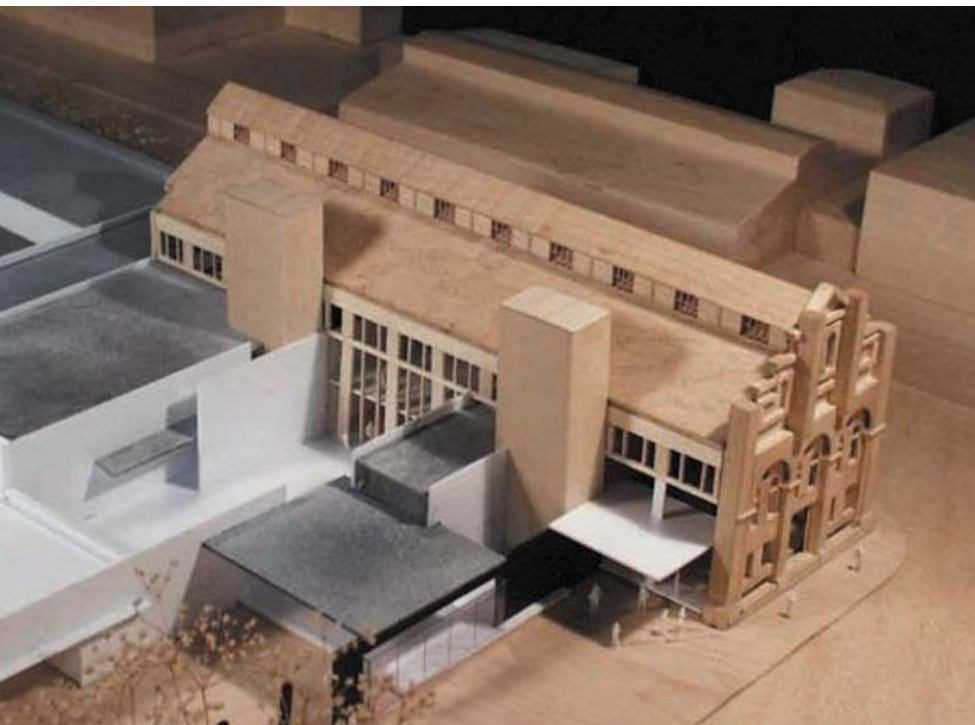


Initially, Toronto city council gave the go ahead to demolish the old school building, but when local residents expressed interest in saving it, Toronto police stepped up.

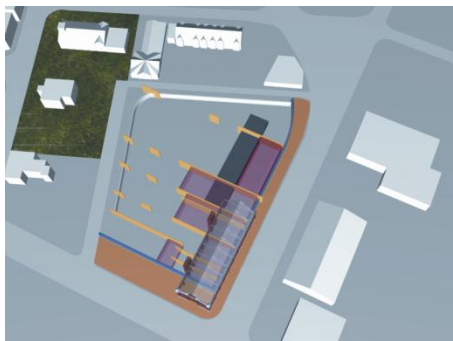
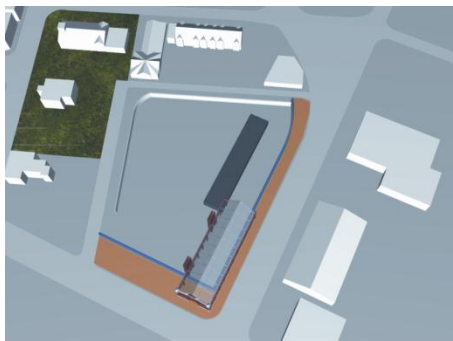
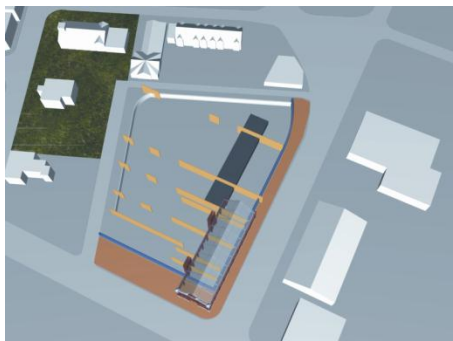




Integration



Concept





Division 51
Stantec **Architecture**