



American College of Healthcare Architects Update



Ongoing ACHA Board Members



Ray Pentecost
President - Elect



John Rogers
Secretary /
Treasurer



Phil Tobey
Communication
and Outreach
Committee
Liason



Jennifer Klund
Exam Committee
Liason



Ongoing ACHA Board Members



Bill Hercules
Awards
Committee
Liason
2017 President-
Elect



Angela Mazzi
Development
Committee
Liason



Ellen Belknap
Certification
Committee
Liason



Vince Avallone
Education Liason



Retiring ACHA Board Member



Anthony Haas
Past President

SUMMER
LEADERSHIP
SUMMIT
2016

Getting
there
FROM
HERE



What happens to a Retiring ACHA Board Member?



Anthony Haas,
Past President,
living in exile in
Copenhagen

SUMMER
LEADERSHIP
SUMMIT
2016

Getting
there
FROM
HERE

AIA AMERICAN
COLLEGE OF
HEALTHCARE
ARCHITECTS

New 2017 ACHA Board Member



Steve Templet

- Sizeler Thompson Brown Architects, Luling, LA
- ACHA Certification Committee



Mid-year Highlights

- ACHA Website Redesign Rollout
- Expand Social Media Outreach
- Growth of ACHA Candidate Program
- Expanded Organizational Outreach
- Monitored Examination Structure
- White Paper / Speakers Bureau
- Revised ACHA online Practice Exam
- Partnered with Modular to host a reception for ACHA Certificants and future candidates in Seattle
- Legacy Project Award Announcement



2016 ACHA Legacy Project Award

Northwestern Memorial Hospital Feinberg / Galter Pavilions

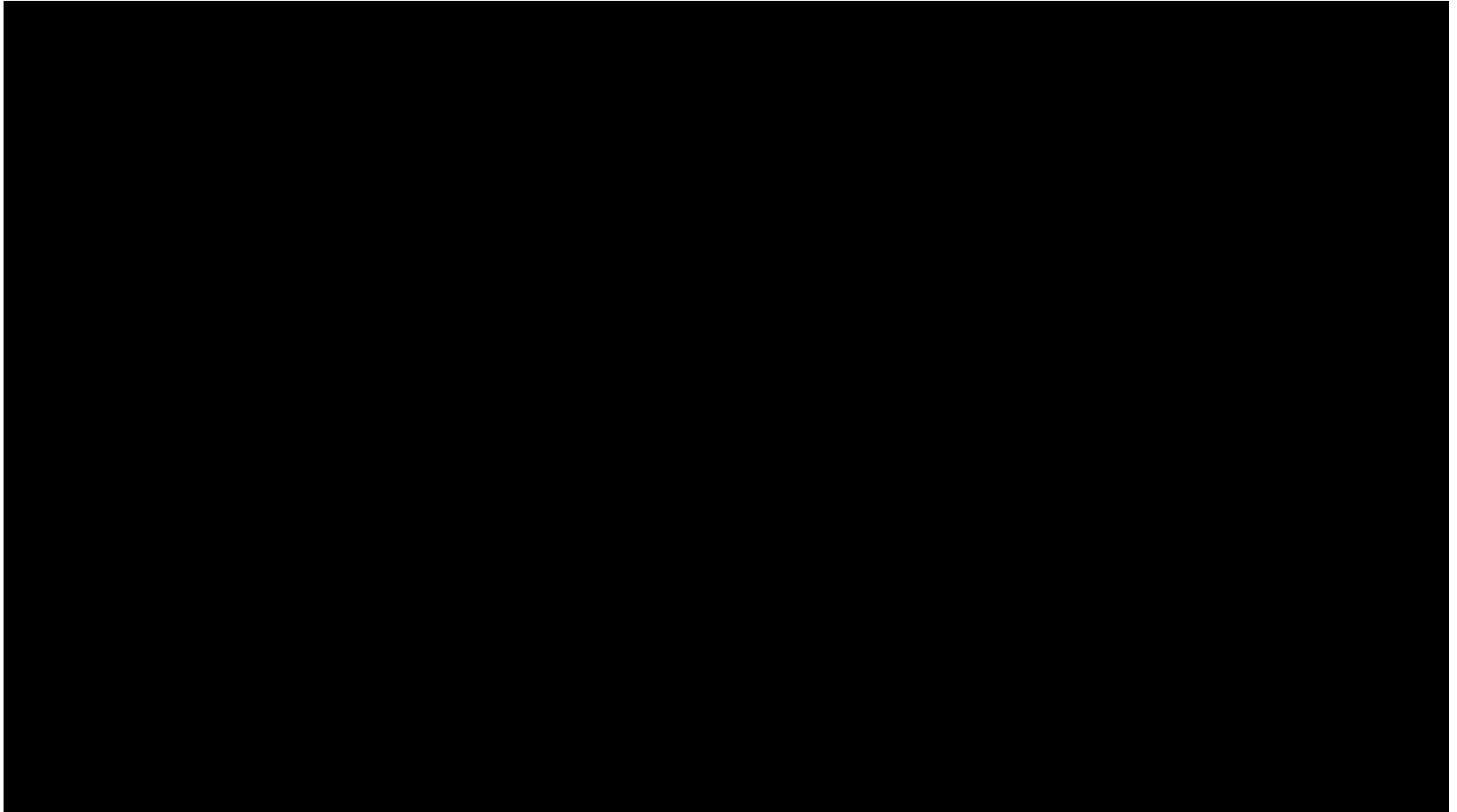


Architects: Joint venture of Ellerbe Beckett/HOK/VOA
Nominated by: James J. Mladucky, AIA, ACHA

SUMMER
LEADERSHIP
SUMMIT
2016

Getting
there
FROM
HERE

2016 ACHA Legacy Project Award



2017 Presidents

ACHA



Ray Pentecost

AAH



Tom Clark

SUMMER
LEADERSHIP
SUMMIT
2016

Getting
there
FROM
HERE

AIA AMERICAN
COLLEGE OF
HEALTHCARE
ARCHITECTS



THE AMERICAN INSTITUTE
OF ARCHITECTS
Academy of Architecture
for Health

AIA Academy of Architecture for Health Update

SUMMER
LEADERSHIP
SUMMIT

2016

Getting
there
FROM
HERE



Ongoing AAH Board Members



Joan Suchomel
President



Peter Bardwell
Operations



Tom Clark
Education
President 2017



Vince Della Donna
Conferences
President 2018



Ongoing AAH Board Members



Chad Beebe
Codes &
Standards



Rebecca Lewis
Communications



Tushar Gupta
Practice
Advancement



Larry Staples
Events



Retiring AAH Board Members



Tatiana Guimaraes
Past President



Charles Griffin
Ambassador

SUMMER
LEADERSHIP
SUMMIT
2016

Getting
there
FROM
HERE



New AAH Board Member



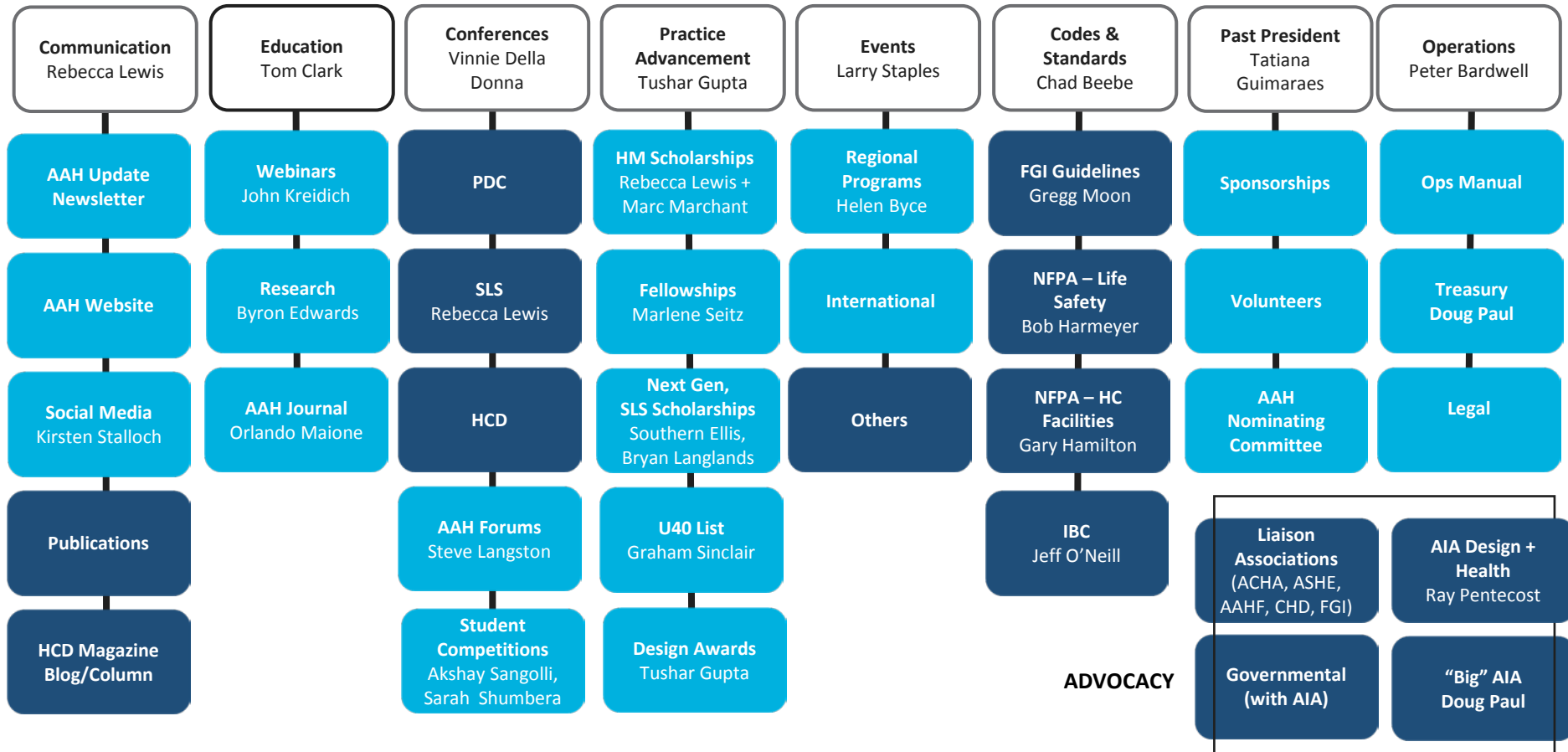
Brenna Costello
2017 Education Liaison

- Principal at Smith Group JJR, Denver
- AAH Communications Committee
- 2012 AIA Emerging Professionals Award



AAH Initiatives 2016

LEAD
PARTNER



THE AMERICAN INSTITUTE
OF ARCHITECTS
Academy of Architecture
for Health

SUMMER
LEADERSHIP
SUMMIT
2016

Getting
there
FROM
HERE



Mid-year Highlights



THE AMERICAN INSTITUTE
OF ARCHITECTS
Academy of Architecture
for Health

- PDC Summit
- Summer Leadership Summit
- Design Awards
- HCD Magazine blogs and articles
- Webinars
- Scholarships, Fellowships, U40
- Nominations Process
- Volunteers
- Prospectus
- Research
- Strategic Plan



Case Study Project Pilot

GOALS

1. Gathering and/or creating Case Studies to share with the Industry
2. Using the AAH Healthcare Design Awards program as one source for case studies
3. Defining a format for meaningful case studies and encouraging firms and their clients to use it and share case studies (through AAH Repository)

A more focused and formal approach to collegial sharing of Design Award winning project information will help us all do better work by:

1. Creating enough Project Case Studies for a Qualitative Comparison BASELINE
2. Or Repository which will allow us to develop scalable metrics that in turn will
3. Provide us with some Best Practice “Rules of Thumb” and “Benchmarking” Analyses
4. Which may lead to and encourage additional RESEARCH opportunities (POEs, etc.)

NOTE:

We need YOUR feedback and hope that you will log onto the Academy website for the entire UCLA Surgery and Cancer Center Pilot Project Case Study and provide the Committee with any suggested revisions, additions, and/or suggestions in the Comments Section.

<http://network.aia.org/academyofarchitectureforhealth/home>



UCLA Outpatient Surgery and Oncology Center

Santa Monica, California



SQ FT
58,651 BGSF Clinic Building
73,736 BGSF Parking Garage



OWNER/AFFILIATION
UCLA Medical Center



ARCHITECT(S)
Michael W. Folonis
Architects (MWFA)



UCLA PATIENT VISITS
Per Year/Day
[VERIFY]



UCLA Outpatient Surgery and Oncology Center Santa Monica, California

ANALYSIS

► Daylighting

- Central Light-filled Lobby with full-height mullion-less glass as 3-story Indoor/Outdoor connection.
- Key Public and Patient areas with perimeter windows and/or skylights

► Views to Nature

- Shaded and unshaded exterior Garden Patios provide choice of outdoor Respite areas
- Interior Plantings are brought deep into the building bringing Views to Nature inside as well

► Use of Warm Colors

- Warm-toned wood used throughout the building
- Warm accent colors and warm-off white adds to warm day-lighting and variation in colors as the day progresses

► Natural Materials

- Use of concrete, steel and glass against the backdrop of warmer wood textures and plantings
- blurring the indoor/outdoor relationships with landscaping and hardscaping Inside and out

"CREATE a more Natural and less Clinical Environment to promote Healing"

[Daylighting]



Views to Nature [Lobby]



INFUSION BAY



WAITING AREA



GARAGE ELEVATOR LOBBY



PATIENT WAITING AREAS & CONSULT



3RD FLOOR BRIDGE OVER ATRIUM

[Warm Wood Tones]

Image Sources: <http://www.folanisarchitects.com/ucla-1/>
<http://www.archdaily.com/388708/ucla-outpatient-surgery-and-oncology-center-michael-w-folanis-architects>



PATIENT WALKING DISTANCE ANALYSIS:

+From entrance to registration:	86 ft
+From registration to medical waiting:	151 ft
+From medical waiting to exam room:	65 ft
+From registration to radiation waiting:	108 ft
+From radiation waiting to LINAC/other:	100 ft
+From registration to pre-op:	211 ft

KEY:

—●— Circulation Path



LEVEL 2



LEVEL 1



GROUND FLOOR

FLOOR PLAN | ANALYSIS



CONCLUSION |

All design elements—from planning to materials—were guided by the concept that a **more natural, and less clinical, environment promotes healing** in patients and supports alert, productive behavior in doctors, staff, and student.

Taking advantage of climate and site conditions, the building features **natural daylighting and ventilation**. The building skin is composed of glass and smooth concrete; the materials were selected for their direct, clean presentation and functionality. Two building blocks are linked by an expansive atrium lobby, which serves as an orderly circulation core.

<http://www.faloniisarchitects.com/ucla-1/>



UCLA Outpatient Surgery and Oncology Center

Santa Monica, California

Departmental Plan Key:

- Pre-Op / Post-Op
- Surgery
- OR Care + Team Support
- Support Space
- Circulation, Shafts, Stairs
- Mechanical + Electrical

Key Spaces:

- ▶ Surgery OR (402SF - 410 sf)
- ▶ Physician Workrooms (275 sf - 295 sf)
- ▶ Prep/Recovery Bays (77 sf - 79 sf)
- ▶ Offices (88 sf - 116 sf)
- ▶ Nurse Stations (95 sf - 191 sf)

Departmental Gross Square Foot Take-Offs

Pre-Op/Post-Op	4840 SF
Surgery	7860 SF
OR Care + Team Support	3047 SF
Shafts + Vertical Circulation	1326 SF
Mechanical	285 SF

LEVEL TWO DGSF TOTAL: 17,358 SF

LEVEL TWO



UCLA Outpatient Surgery and Oncology Center
Santa Monica, California

Departmental Plan Key:

- Pre-Op / Post-Op
- Surgery
- OR Care + Team Support
- Support Space
- Circulation, Shafts, Stairs
- Mechanical + Electrical

Key Spaces:

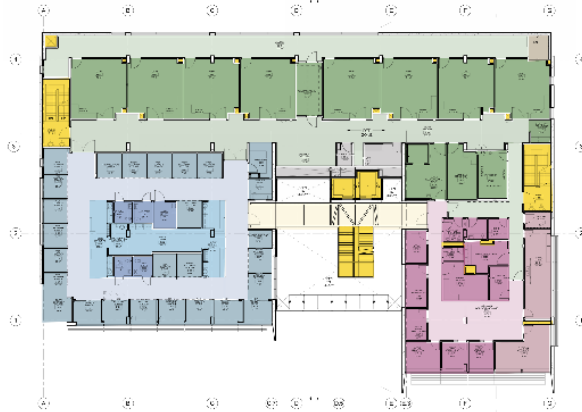
- Surgery OR (4025F - 410 sf)
- Physician Workrooms (275 sf - 295 sf)
- Prep/Recovery Bays (77 sf - 79 sf)
- Offices (88 sf - 136 sf)
- Nurse Stations (95 sf - 191 sf)

Departmental Gross Square Foot Take-Offs

Pre-Op/Post-Op	4840 SF
Surgery	7860 SF
OR Care + Team Support	3047 SF
Shafts + Vertical Circulation	1326 SF
Mechanical	285 SF

LEVEL TWO DGST TOTAL: 17,358 SF

LEVEL TWO:



*Departmental Square footages based on Analysis of Departmental Area in Contemporary Hospitals calculation methodologies & Design Factors Report, 2014.

LEVEL THREE:



Departmental Plan Key:

- Clinic A
- Clinic B
- Clinic C
- Support Space
- Circulation, Shafts, Stairs
- Mechanical + Electrical

Key Clinical Spaces:

- Patient Exam Rooms (90 sf - 130 sf)
- Provider Offices (90 sf - 120 sf)
- Nurse Stations (112 sf - 125 sf)
- Records (178 sf - 200 sf)
- Reception (254 sf)

Departmental Gross Square Foot Take-Offs

Clinic A	4125 SF
Clinic B	3420 SF
Clinic C	5800 SF
Support Space -	732 SF
Shafts + Vertical Circulation	1335 SF
Mechanical	555 SF

LEVEL THREE DGST TOTAL: 15,987 SF

7

DRAFT

AMBULATORY OUTPATIENT CANCER CENTER | CASE STUDY ANALYSIS
AIA Academy of Architecture for Health | Research Initiatives Committee
DRAFT

8

Two 8 1/2 x 11 images side by side for 8 1/2 by 22 booklet format

Healthcare Design 2016 – Research Forum Presentation:

Description: Architects, Designers and Planners usually conduct literature reviews, site and facilities tours, and occasionally put together informal “case studies” for their clients and teams to review before beginning a new project. The AIA AAH Research Initiatives Committee proposes a new and more formal format for these type of informal case studies with the idea that increased rigor will improve the quality of the Case Studies and eventually lead to more detailed POE Studies by researchers.

In this session, a new methodology will be presented, using several award winning healthcare projects as the first phase of a CASE STUDY format with the goal of “bridging the gap” between research and practice. Following the pilot phase, the Research Initiatives Committee plans to build a large accessible online database of these case studies for healthcare architects to use as a benchmarking tool.

NOTE:

We would like the members of the Academy to provide input to this proposed Case Study Format for The UCLA Surgery and Cancer Center Project. The Case Study with Comments Section can be found on the Academy Website at:

<http://network.aia.org/academyofarchitectureforhealth/home>

AIA/AAH Strategic Plan



THE AMERICAN INSTITUTE
OF ARCHITECTS
Academy of Architecture
for Health

How best can our organization serve our members and the greater community?

- Our relevance in a crowded field
- Our distinct competencies and value proposition
- The non-negotiable characteristics that define us
- How we can be a primary player and influencer in the field of healthcare design



AIA/AAH Strategic Plan

2016-2021



THE AMERICAN INSTITUTE
OF ARCHITECTS
Academy of Architecture
for Health

We have many strengths, including our:

Products; we are the quality source

(education, knowledge, and expertise)

Collaborative spirit

*(internal - competitors working together
external – willingness to assist other organizations)*

Ability to provide opportunities

*(students, emerging professionals and professionals can engage
passion and multiply impact)*

Credibility and influence

We have many opportunities, including:

Provision of more thought leadership

(channel to access experts and ideas, creation of futurist positions)

Provision of greater value to members

*(better and more useful, tangible content: what they need where
they want to receive it)*

Simply executing on an agenda

(deliver on mission, impact the industry)

However, we have weaknesses which are our:

Low profile and unclear role

*(we're invisible and irrelevant to many
internally – unsure of member needs, not connected locally
externally – not distinctive vs. other organizations)*

Inability to focus

(too many tasks – busy and not strategic)

Giving away our best ideas

(creating ideas which spawn new organizations to compete for influence)

Lack of leadership continuity

(no sustained agenda, brief terms, annual turnover)

And we face threats, including:

A crowded market space

(we are vulnerable, one of many without sufficient distinctiveness)

Demand for different products and services

(changing needs for an ever-changing profession)

An industry in constant turmoil

(and a demand for nimbleness we struggle to provide)

SUMMER
LEADERSHIP
SUMMIT

2016

Getting
there
FROM
HERE

Next Generation

2016 Scholars

Rachael Giana Johnson

Kirsten Staloch



THE AMERICAN INSTITUTE
OF ARCHITECTS
Academy of Architecture
for Health

SUMMER
LEADERSHIP
SUMMIT

2016

Getting
there
FROM
HERE



Next Generation

2015 Scholars

Kerianne Graham

Luis Martinez



THE AMERICAN INSTITUTE
OF ARCHITECTS
Academy of Architecture
for Health



Next Generation 2015 Scholars



2016 AAH Under 40 Award

- Persons under 40 showing outstanding leadership, innovation, and active dissemination of ideas in healthcare design
- By nomination and recommendation
- Personal statement: How do you see the healthcare design advancing in the future and how do you see yourself playing a role?
- Jury: Graham Sinclair (Chair), Heather Chung, Joan Suchomel, Mardelle Shepley, Mark Thiele, Vince Della Donna



2016 AAH Under 40 Award



Joaquim Meira

- Architect for the public Health System of the State of Pará, Brazil
- Plans and designs public health facilities
- Led strategic plan to reshape public healthcare facilities in State of Pará
- Influenced move to have public health come before political interests
- Moved the system from old typology to one focusing on patient and family needs



THE AMERICAN INSTITUTE
OF ARCHITECTS
Academy of Architecture
for Health



2016 AAH Under 40 Award



- Architect and Educator
- President and Founder of Institute for Patient-Centered Design
- Professor of Architecture at Savannah College of Art and Design
- Created and directs The Patient Experience Simulation Lab
- Connects her students with actual patients and clinicians
- Published author

Tammy Thompson



THE AMERICAN INSTITUTE
OF ARCHITECTS
Academy of Architecture
for Health

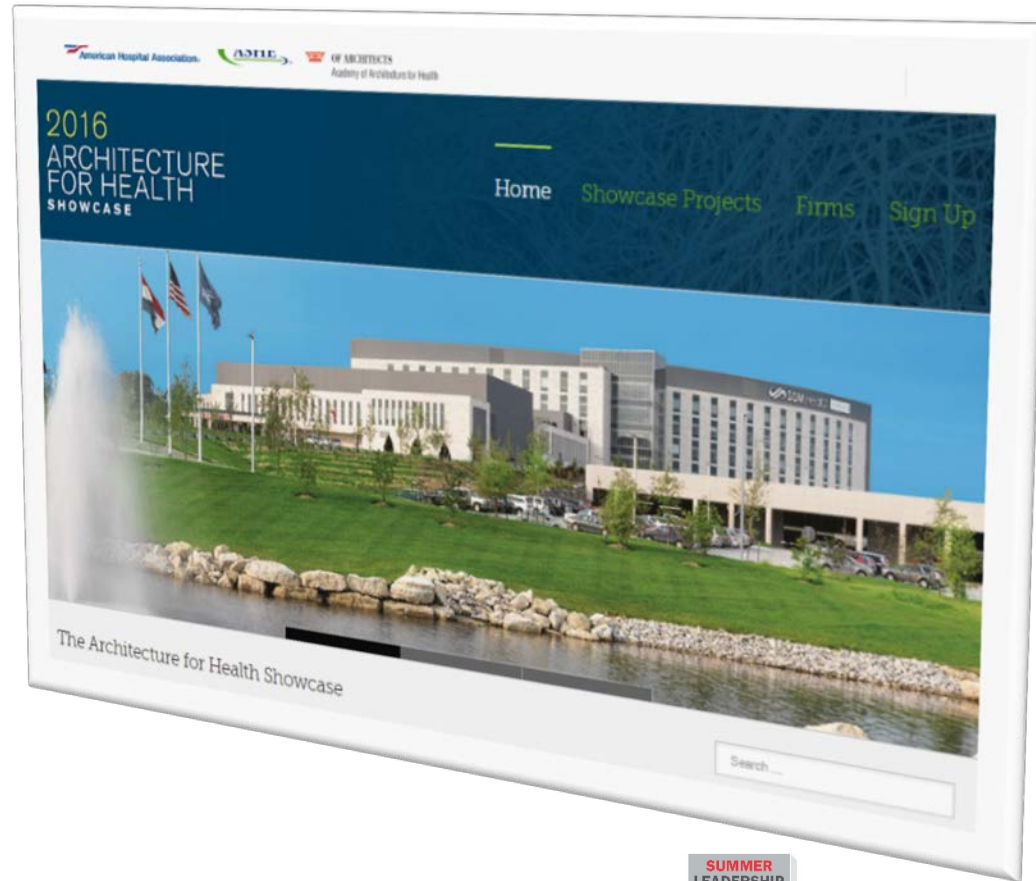


2017 AIA/ASHE Architectural Showcase

- Markets directly to thousands of health care leaders
- Offers a variety of touch-points with your potential clients
- Firms of all sizes are encouraged to participate.

<http://archshowcase.org/>

Deadline to participate is December 20th 2016.



SUMMER
LEADERSHIP
SUMMIT
2016

Getting
there
FROM
HERE

AIA AMERICAN COLLEGE OF HEALTHCARE ARCHITECTS

Educators Summit Update

AM: Professional Organization and Industry Updates

- STERIS Student Design Charrette
- PDC Student Design Challenge
- AIA/AAH and AAHF Fellowship Opportunities
- ACHA Certification
- Center for Health Design
- Institute for Patient Centered Design
- UIA Public Health Group and GUPHA

PM: Academic Program Updates

- Clemson
- Texas A&M
- Kansas
- Texas Tech
- Iowa State
- Illinois
- Nebraska
- Arizona
- SCAD
- BAC



Educators Summit Academic Participants

- **Clemson University**
 - David Allison
 - Byron Edwards
- **Texas A&M**
 - Kirk Hamilton
 - George Mann
 - Zhipeng Lu
- **Texas Tech**
 - Saif Haq
 - Debajouti Pati
 - Ray Pentecost
- **University of Kansas**
 - Frank Zilm
 - Kent Spreckelmeyer
 - Hui Cai
- **Ball State University**
 - Shireen Mohammad Kanakri
- **Boston Architectural Center**
 - Susan Sullivan
- **Iowa State**
 - Cameron Campbell
- **Nebraska**
 - Sheila Elijah
 - Wayne Drummond
- **Savannah College of Art & Design**
 - Tammy Thompson
- **University of Illinois: Urbana Champaign**
 - Bill Worn
- **University of Arizona**
 - Casey Lindberg



Educators Summit Industry/Professional

- ACHA
 - Mark Nichols, President
 - Peter Bardwell
- AIA/AAH
 - Board
 - Rebecca Lewis, Summit Chair
 - Marlene Kitchen Seitz
 - Sara Shumbera
- AAHF
 - Erin Peavey
 - David Allison
 - Frank Zilm
- Center for Health Design
 - Donna Deckard
- Institute for Patient Centered Design
 - Tammy Thompson
- STERIS
 - George Godfrey
- VOA/Stantec: Summit Host
 - Doug King



Group Session

Goal 1: To create our own industry report at the end of the conference

Goal 2: To better understand how others see what we do and what they question

Goal 3: To consider how much we know about ourselves

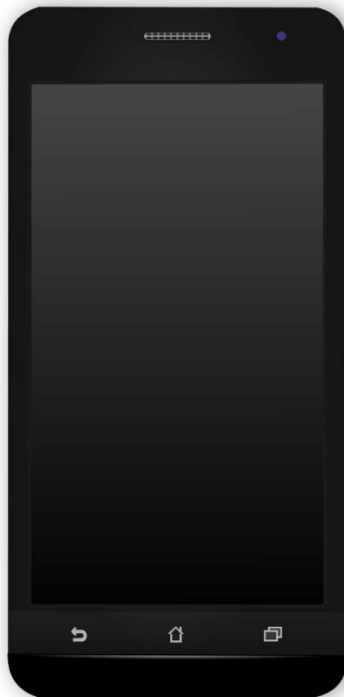
Goal 4: To gather some data on subjects our clients are concerned about

The questions are from both the AIA Client Survey 2016 and from our conference presenters.



Group Session

Polling Instructions:



Text SLS16 to
22333 to join

SUMMER
LEADERSHIP
SUMMIT
2016

Getting
there
FROM
HERE

AIA AMERICAN
COLLEGE OF
HEALTHCARE
ARCHITECTS

Group Session



Host and Facilitator

Tim Chidester

