

Ann B. Barshinger Cancer Institute
Lancaster, PA



SQ FT
100,000 BGSF



OWNER/AFFILIATION
Penn Medicine
Lancaster General
Health



ARCHITECT(S)
Ballinger



COMPLETION DATE
2013



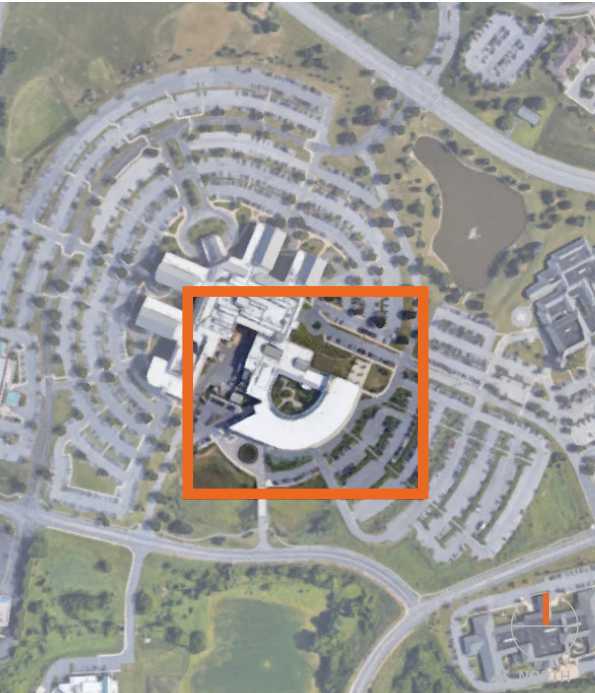
MAIN ENTRANCE



LOBBY



ENTRANCE

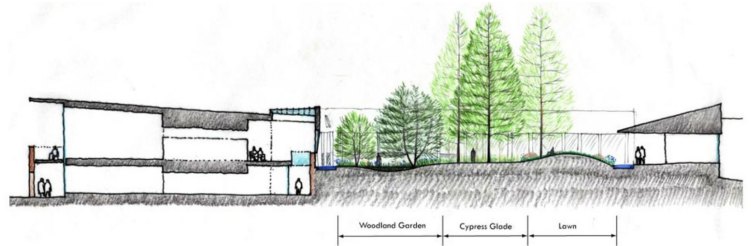


SITE MAP

ABOUT | DESIGN INTENTIONS

In response to a growing health system's need for expanded oncology services, the Ann B. Barshinger Cancer Institute transformed and consolidated all services into a center for healing. The program for the 100,000 SF space includes The program includes exam/procedure rooms, physician offices and support staff workspace, patient/family consultation areas, a cancer resource library, state-of-the-art conference areas, an imaging center, a patient boutique, an infusion center, a healing garden, a meditation room and a children's play area. **Effectiveness of care is the Hospital's top priority, which is supported by the ability of the design to accommodate multidisciplinary teams implementing interdisciplinary concepts.** An efficient layout and a strong technology backbone, including a gamma knife, will contribute to the project's success.

Sources: <https://architizer.com/projects/ann-b-barshinger-cancer-institute/>



CONCEPT SECTIONS



PHYSICAL MODEL

Ann B. Barshinger Cancer Institute

Lancaster, PA

STRATEGIES

Visual relief

Glazed skins and multiple points of access provide a continuous dialogue between interior and exterior, creating a visually open environment that reduces anxiety and stress for patients who deal with serious and chronic illness.

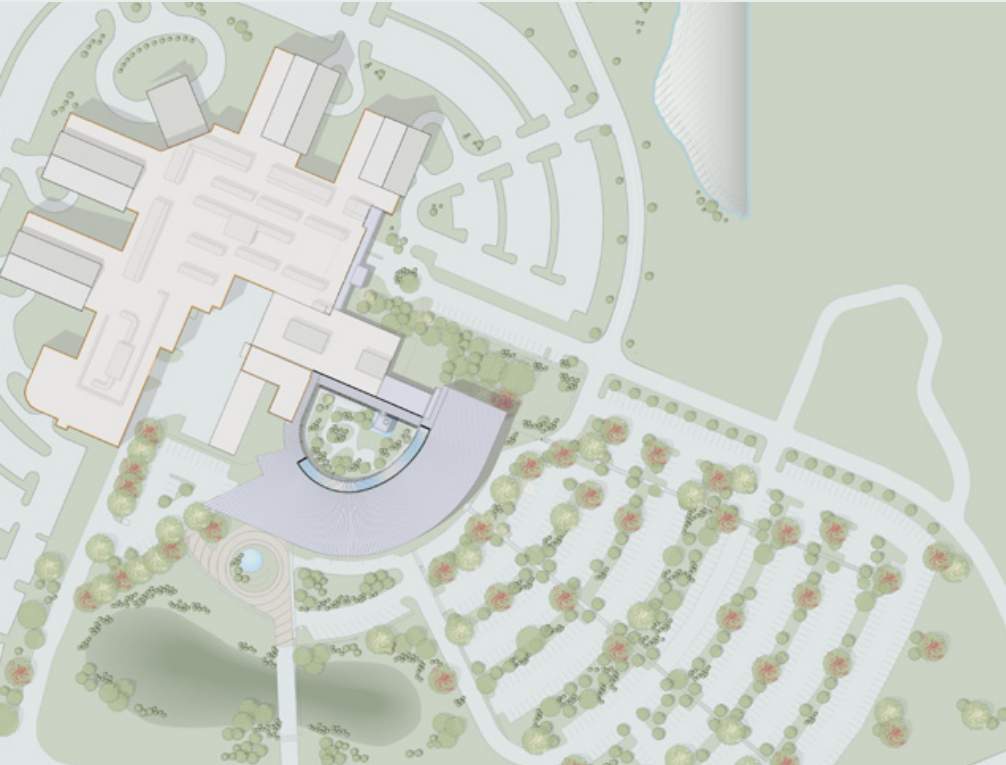
Meditation pavilion

On one side of the Healing Garden is the **Meditation Pavilion**, which opens from the second floor hallway. This indoor contemplative space is framed by windows and faces a reflecting pool filled with large pebbles.

This is a deeply scientific, highly technologically advanced program embedded in a soft way that is accessible to people.
-Dr. Randall Oyer, medical director of the Oncology Program Barshinger Cancer Institute



SITE PLAN



STRATEGIES

Healing garden

Focused on regeneration and reconnection to living systems, the two-story expansion extends on a radial grid from **a central courtyard healing garden**. The garden offers contemplative spaces for patients and families to interact with nature and find comfort by the meditation pavilion.

Natural light

The spacious lobby is filled with natural light from the floor-to-ceiling windows that grace the entrance. Nearby, paintings of local artists hang in a glass-encased room, and an expansive wall of live green plants, grown hydroponically, serves as a backdrop to the reception area. The beauty and aesthetic of the lobby belies the cancer-fighting work that goes on just around the corner.

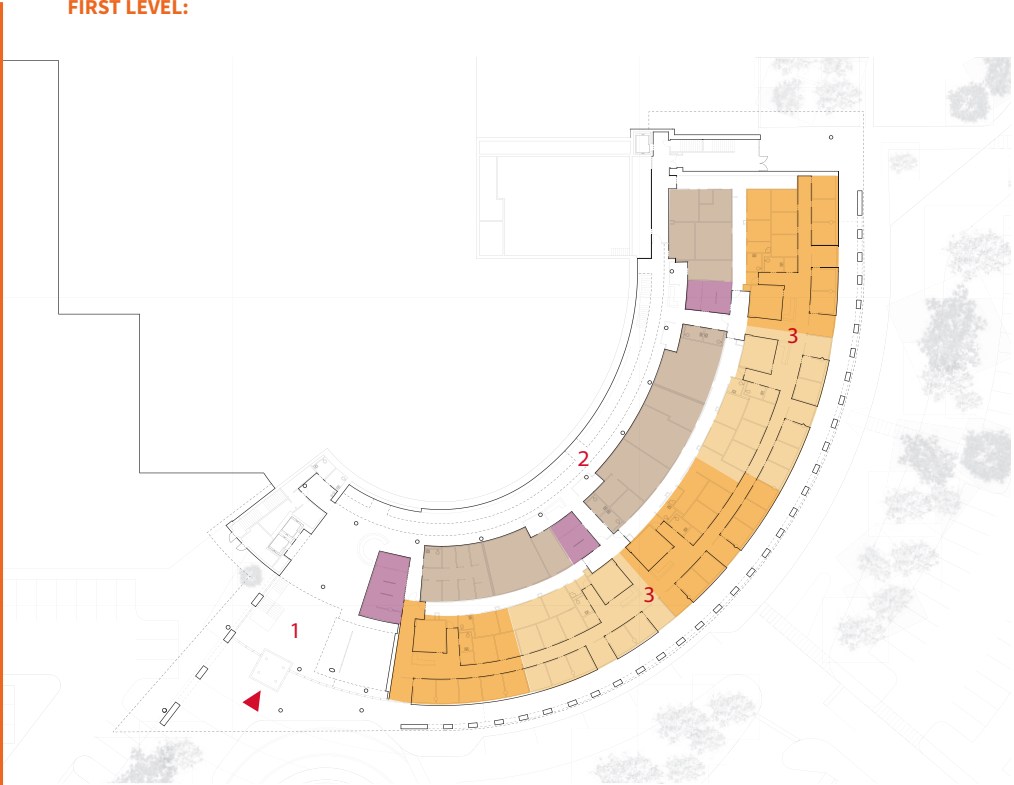
Ann B. Barshinger Cancer Institute

Lancaster, PA

DEPARTMENT

Registration/Waiting	1,852 SF
Diagnostic "pod"	3,490 - 4915 SF
Work cores	8,685 SF

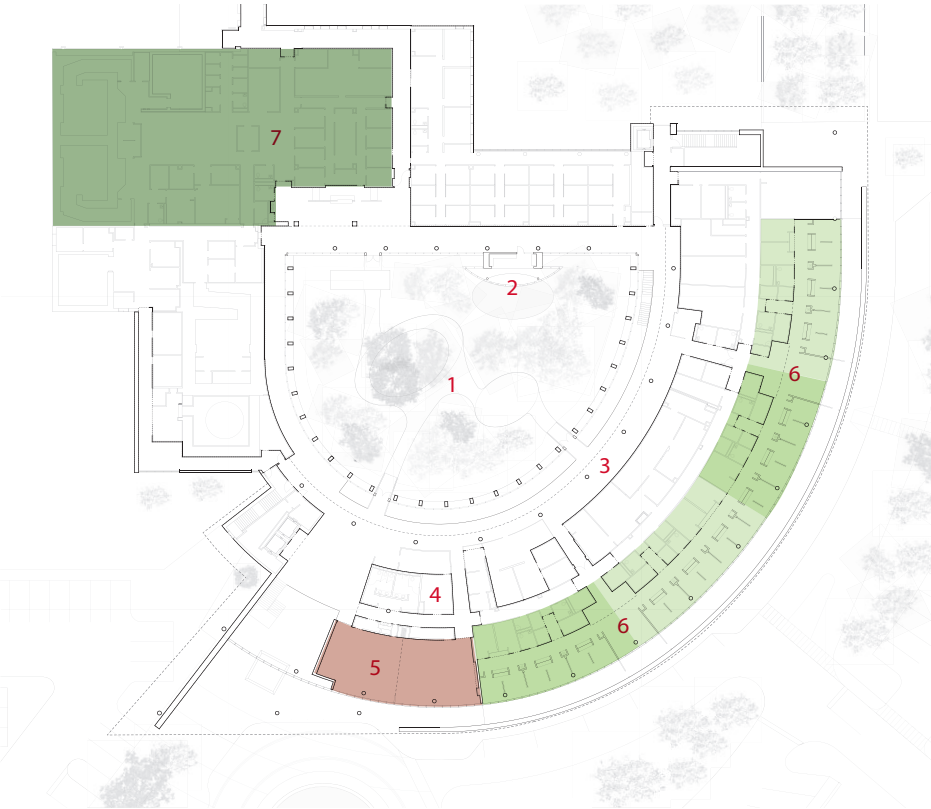
FIRST LEVEL:



- 1 Main lobby
- 2 Lower concourse
- 3 Diagnostic "pod"

Note: "Departmental Square footages take-off based on 'Analysis of Departmental Area in Contemporary Hospitals calculation methodologies & Design Factors Report, 2014"

SECOND LEVEL



- 1 Healing garden
- 2 Meditation pavilion
- 3 Upper concourse
- 4 Cafe
- 5 Multipurpose room
- 6 Infusion "pod"
- 7 Radiation

DEPARTMENT

Radiology	19,428 SF
Infusion "pod"	3,827 - 4,538 SF
Multifunctional room	3,480 SF

KEY SPACES:

- Infusion pod (211 sf)
- Diagnostic pod (199 sf)

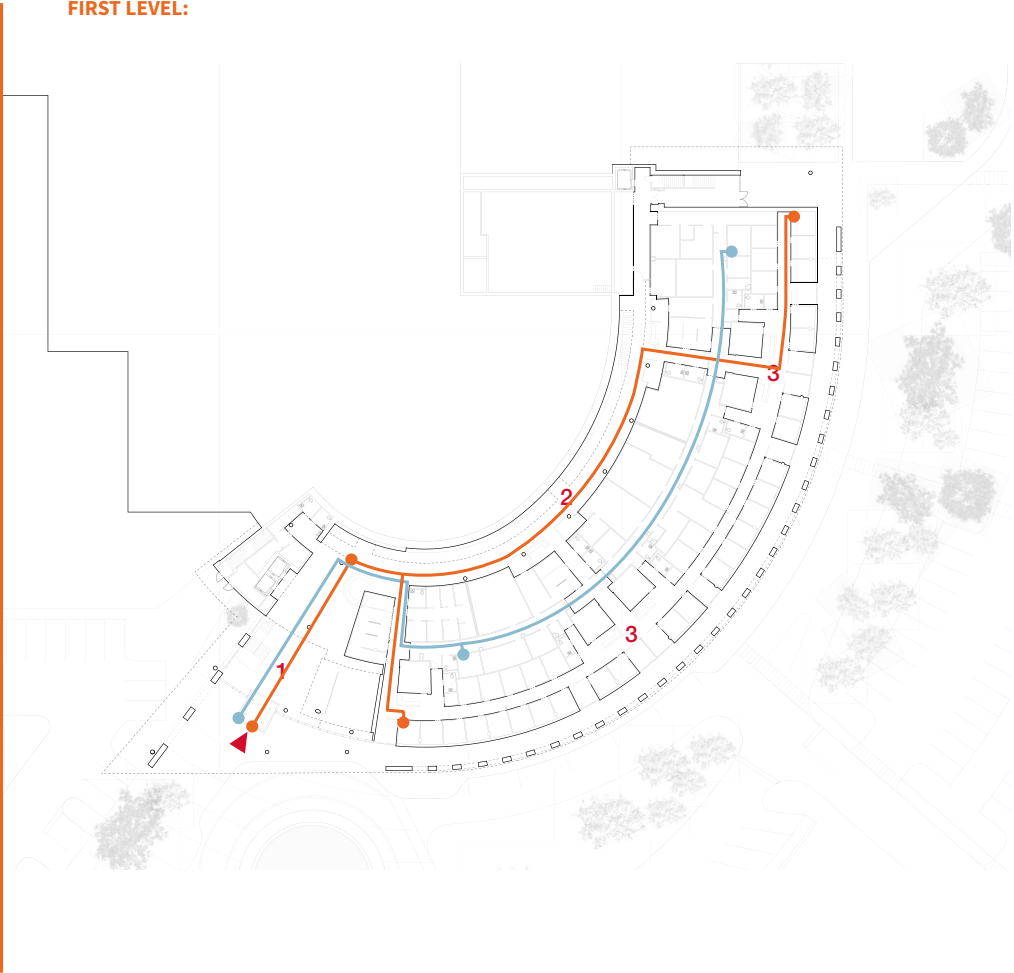
Ann B. Barshinger Cancer Institute

Lancaster, PA

TRAVEL DISTANCE ANALYSIS

- Patient entrance to registration 111 ft
- Registration to diagnostic pod 138 ft - 426 ft
- Staff entrance to workcore 237 ft - 566 ft

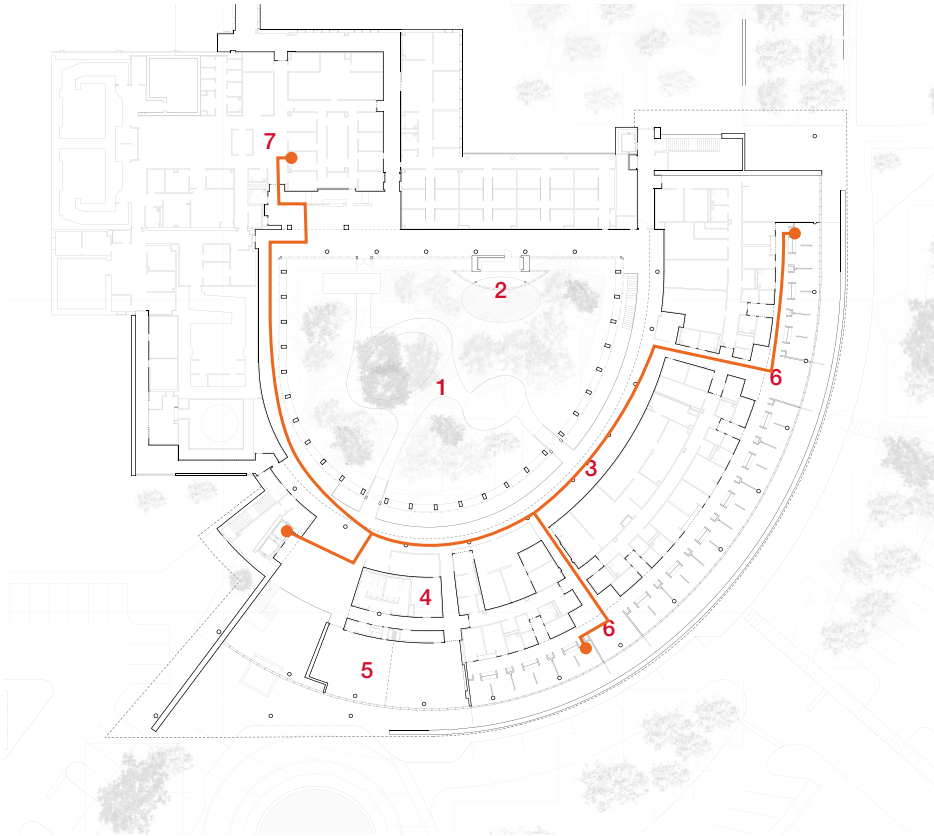
FIRST LEVEL:



SECOND LEVEL

TRAVEL DISTANCE ANALYSIS

- Elevator to radiology 315 ft
- Elevator to infusion pod 287 ft - 476 ft



Ann B. Barshinger Cancer Institute

Lancaster, PA

PROJECT DISCRIPTION FROM AIA

Cancer is a traumatic and continuing illness where patients endure life altering diagnosis, iterative and prolonged treatment regimens and, increasingly, life-mending healing. **The building design focuses on two primary concepts: 1) an interdisciplinary and patient-centric approach to cancer care and 2) connection and relationship to natural systems as catalysts in the healing process.** The approach to the new facility takes the patient through landscaped grounds and across a bridge that is a metaphor for the challenge ahead.

PROJECT SUMMARY:

Project: Ann B. Barshinger Cancer Institute
Project location: Lancaster, PA
Owner/Client: Lancaster General Health
Architect: Ballinger
Construction manager: Benchmark
Landscape Architect: Jonathan Alderson Architects
Structural engineer:
General contractor:
MEP engineer:
Acoustics:
Photographs/Illustrations:
Construction cost: \$44 million
Building area GSF: 80,000 SF
Cost per square foot: \$550
Construction start date:
Substantial completion date: 2013



AIA/AAH DESIGN AWARD WINNER

Category: B

JURY COMMENTS

- ▶ The connection of the building program elements to the exterior landscape demonstrates how spatial constraints can be made transparent and yet comforting in very clinical settings.
- ▶ Bold gesture captures light for all patrons of this special purpose facility. The form creates both layers of privacy and connection to nature and light for both the caregivers and patients.
- ▶ Color palette and material selection is sophisticated yet comforting. The variety of spaces allows for individual selection and comfort.
- ▶ The design quality is consistent from building approach, through the public spaces and deep into the treatment areas. Both the plan and section diagram thoughtfully responds to the program elements and clinical care model.

