



Stellar Architecture using BIM

CITATION

Perot Museum of Nature and Science,
Morphosis Architects with John A. Martin Associates, Inc.,
Datum Engineers, Buro Happold, Balfour Beatty Construction

“Because technology was able to communicate this design, they were able to achieve this project.”

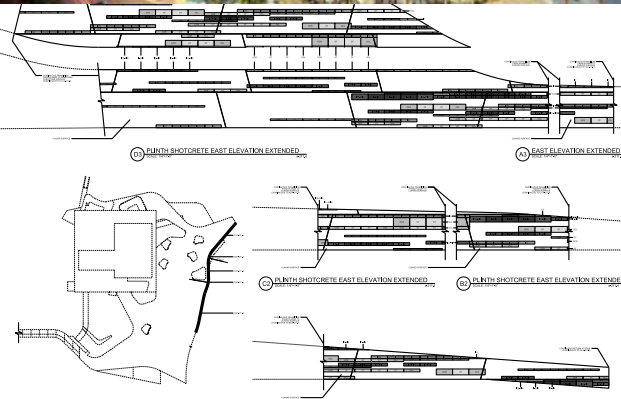


Stellar Architecture using BIM

CITATION

Anaheim Regional Transportation Intermodal Center
HOK/Parsons Brinckerhoff with Buro Happold

“They used the tools best necessary to accomplish the design they desired to accomplish.”



BIM Delivery Process Innovation

CITATION

Perot Museum of Nature and Science,
Morphosis Architects with John A. Martin Associates, Inc.,

“They communicated effectively. Their process delivery was exceptional.”

BIM Delivery Process Innovation

CITATION

Pegula Ice Arena at The Pennsylvania State University
Crawford Architects in association with Bohlin Cywinski Jackson
with Subconsultants Mortenson Construction, Thornton Tomasetti,
and KJWW Engineering

“Multiple BIM use beyond design and construction. This had a level of complexity unseen in others. The use of CAVE was impressive.”

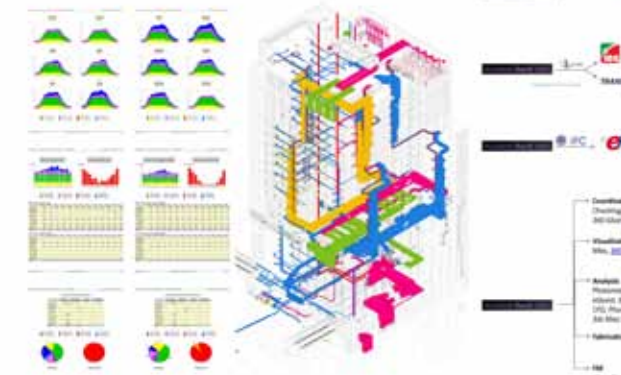


BIM Delivery Process Innovation

CITATION

Outpatient Care Pavilion
Northwestern Memorial, Cannon Design with Lend Lease, Affiliated
Engineers, Thornton Tomasetti, and Pepper Construction

“They used BIM as it should be used. It’s a truly integrated project”





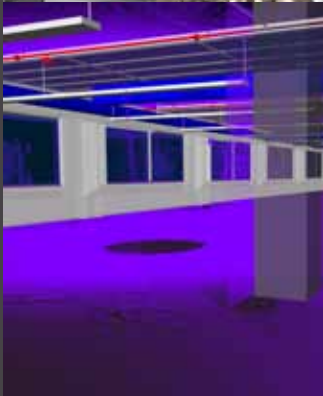
BIM Delivery Process Innovation

CITATION

Enchanted Storybook Castle

Walt Disney Imagineering with Gehry Technologies

“They are doing what all architects should be doing... tools that should be leveraged in all practices.”



BIM Delivery Process Innovation

HONORABLE MENTION

Northwestern Mutual Van Buren Office Building

Eppstein Uhen Architects with Mortenson Construction

“best example of prefabrication”

Exemplary use of BIM in Facility Management | Operations

HONORABLE MENTION

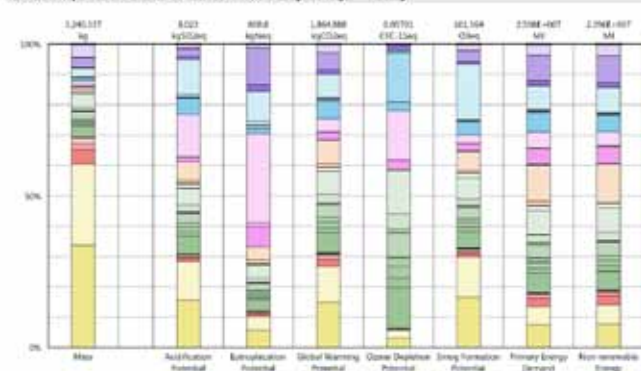
Rehabilitation Hospital

Carolinas HealthCare System with FreemanWhite



“proactively analyzed operational efficiency using BIM”

Results per CSI Division, itemized by Tally™ Entry



Process and Technology Innovation

Integrating with BIM

CITATION

Tally Revit Application

KT Innovations, an affiliate of KieranTimberlake with PE INTERNATIONAL and AUTODESK

“truly uses BIM as a lifecycle process... one of the first”



Jury's Choice

Perot Museum of Nature and Science,

Morphosis Architects with John A. Martin Associates, Inc., Datum Engineers, Buro Happold, Balfour Beatty Construction

“This project leveraged BIM not just in design but in the documnetation, fabrication, shop drawing process and installation... they achieved things in a time that would have been unimaginable otherwise.”

2014 AIA TAP BIM AWARDS JURY

Ajla Aksamija PhD LEED AP BD+C CDT UMass & Perkins & Will
 Boyd Black University of Chicago
 Bradley Workman ZweigWhite

David Fano Columbia University & CASE Design Inc
 Norbert W. Young Jr. Lehrer LLC
 Paul Teicholz PhD Founder CIFE at Stanford University

2014 TAP ADVISORY GROUP

2014 CHAIR BRIAN SKRIPAC, ASSOC. AIA, LEED AP BD+C
 2015 CHAIR JEFFREY OUELLETTE, ASSOC. AIA
 PAST CHAIRS
 (ACTIVE) KIMON ONUMA, FAIA
 DAVID R. SCHEER, AIA
 KRISTINE FALLON, FAIA
 STEPHEN HAGAN, FAIA, CCM
 CALVIN KAM PHD, AIA, PE, LEED AP
 TONY RINELLA, ASSOC. AIA

LUCIANA BURDI, PHD
 EVE EDELSTEIN, PHD, ASSOC. AIA
 MARTY DOSCHER, ASSOC. AIA
 PETE EVANS, AIA
 ANGI IZZI, ASSOC. AIA
 MICHAEL KENIG, ALLIED AIA, LEED AP
 KAREN KENSEK
 ANDREW SMITH, AIA
 ROBERT YORI ASSOC. AIA

Complete awards submissions available online...

LEARN MORE AT:
<http://www.aia.org/tap>

& @aia_tap



< continued from front cover

... Our Tenth Anniversary BIM Awards

that collaboratively harnessed the talents and insights of all participants which optimized efficiency through all phases of design, fabrication and construction, eliminating waste and maximizing value throughout the project life cycle. The jury gave this project award citations for Category A (Stellar Architecture), Category B (Process Innovation) and Jury's Choice.

Walt Disney Imagineering's Enchanted Storybook Castle demonstrated process innovation in many areas. This was a very complex project that used BIM to coordinate and plan many disciplines grouped into two project teams separated by many time zones. It also illustrated excellent use of BIM for construction planning, fabrication, FM requirements, visualization.

The **Outpatient Care Pavilion by Cannon Design** was singled out for its excellent use of a BIM Execution Plan and monitoring of plan.

The **Pegula Ice Arena at Penn State by Crawford Architects**, during the feasibility study phase, employed multiple modeling tools alongside traditional two-dimensional mediums to evaluate and communicate the projects feasibility.

The **Tally Revit Application by Kieran Timberlake** was awarded in the Innovative Tools category (a first for this year). The jury found that the tool itself was innovative because it leveraged BIM's ability to perform material takeoffs while closing the gap between modeling practices and built reality.

An honorable mention in Process Innovation Category was the **Northwestern Mutual Van Buren Office Building by Mortenson Construction**. Paramount to the success of this project was the cohesive team that collaborated from day one. The team openly communicated and shared information through a variety of mediums, including BIM.

AIA TAP continued the BIM Awards partnership with IFMA (The International Facility Management Association) for the second year and this year awarded an honorable mention in the BIM Excellence for Facility Management and Operations to the **Rehabilitation Hospital by Carolinas Healthcare**. The jury noted that the owner had their own clear plan for how they intend to use BIM for the long-term value of the facility and there were significant savings demonstrated in BIM to CMMS and CAFM applications.

At the 2014 BIM Forum this year on April 25th, the five finalists for Process Innovation gave extended presentations on their submissions to over 500 assembled in Boston. Online voting resulted in the selection of **Walt Disney Imagineering's Enchanted Storybook Castle** as the 2014 Professionals Choice BIM Award winner.

The COAA jury selected the following projects for the 2014 Owners' Choice BIM Awards:

Award of Excellence Outpatient Care Pavilion and **Merit Awards** for Enchanted Storybook Castle, Pegula Ice Arena, Anaheim Regional Transportation Intermodal Center, and Perot Museum of Nature and Science.



2014 TAP CIRCLE MEMBER
AIA TECHNOLOGY IN ARCHITECTURAL PRACTICE



2014

BIM Awards 10TH ANNIVERSARY

AIA TAP in association with BIMForum, COAA & IFMA

2005 - 2014

The AIA Technology in Architectural Practice (TAP) presents its 10th Annual Building Information Modeling (BIM) Awards honoring projects that have used technology as a mechanism to bridge the gap between people and processes.

See www.aia.org/tap for more of the collaborative efforts embodied by this year's award recipients and compare them to winners from previous years.

Our Tenth Anniversary BIM Awards by Stephen R Hagan FAIA

In this tenth year of the AIA TAP BIM Awards, the jury chose exemplary examples of innovative collaboration and technology integration. Highlighted were projects that documented the return-on-investment and return-on-value of BIM. Also this tenth anniversary year was a new category highlighting innovative tools using BIM.

As **Norbert Young FAIA**, our 2014 BIM Awards Jury chair, commented: "the projects we awarded were truly gems, with excellent documentation and highly innovative."

Ajla Aksamija, PhD, of University of Massachusetts Amherst, noted, "I was impressed with all of the submissions for this year's AIA TAP BIM awards. The winning projects show how technology, innovation and design excellence are integrated when BIM is successfully employed in architectural design."

David Fano AIA, Managing Director of CASE, added, "I was very impressed with the quality of the work and excited to see firms really pushing what can be done when truly pushing a BIM process."

Bradley E Workman AIA of Zweig/White said, "These projects demonstrate the vision and objectives of BIM are beginning to be realized"

The Stellar Architecture BIM category elicited two unique and exciting projects. The **Anaheim Regional Transportation Intermodal Center by Büro Happold** included an excellent use of BIM and other computational design tools design, analysis and construction. A unique aspect of this project was how 3D printing was exploited for physical verification of concepts.

The **Perot Museum of Nature and Science by Morphosis** made a dramatic impression on this year's jury. The extensive use of BIM in the early design phases by the architect, engineers, and contractor resulted in a more thorough coordination between all building systems as well as more precise control of material quantities and pricing. And co-locating key stakeholders at the Perot Museum of Nature and Science job site integrated people, systems, business structures and practices into a process

continued on back cover >

2014 TAP PREMIERE CIRCLE MEMBER
AIA TECHNOLOGY IN ARCHITECTURAL PRACTICE

