



ALAN DUNLOP ARCHITECT

expressive reductionism

ALAN DUNLOP ARCHITECT

Studio:

13 James Morrison Street
Merchant City
Glasgow G1 5PE
United Kingdom

Web:

www.alandunloparchitects.com

Email:

ad@alandunloparchitects.com

Telephone:

0044 (0) 141 548 6920

Mobile:

0044 (0) 7814 509 013



Sixty 7 Hope Street : A new commercial project within Glasgow's city centre conservation area.

It sits alongside Atlantic Chambers, a Grade 'A' listed office building by JJ Burnett, one of the city's most famous architects and in one of the busiest parts of Glasgow, near the Radisson Blu hotel.

The commission also involved the refurbishment of a Robert Thomson Grade 'B' Listed building from 1899. The challenge was to create a highly contemporary office building between two of the city's most recognised and respected listed structures

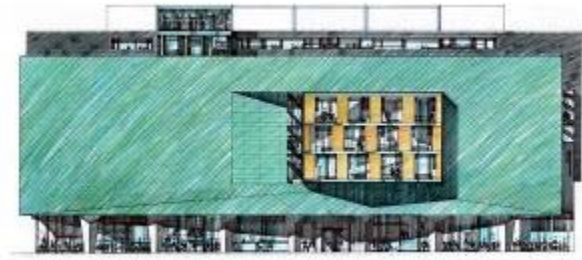


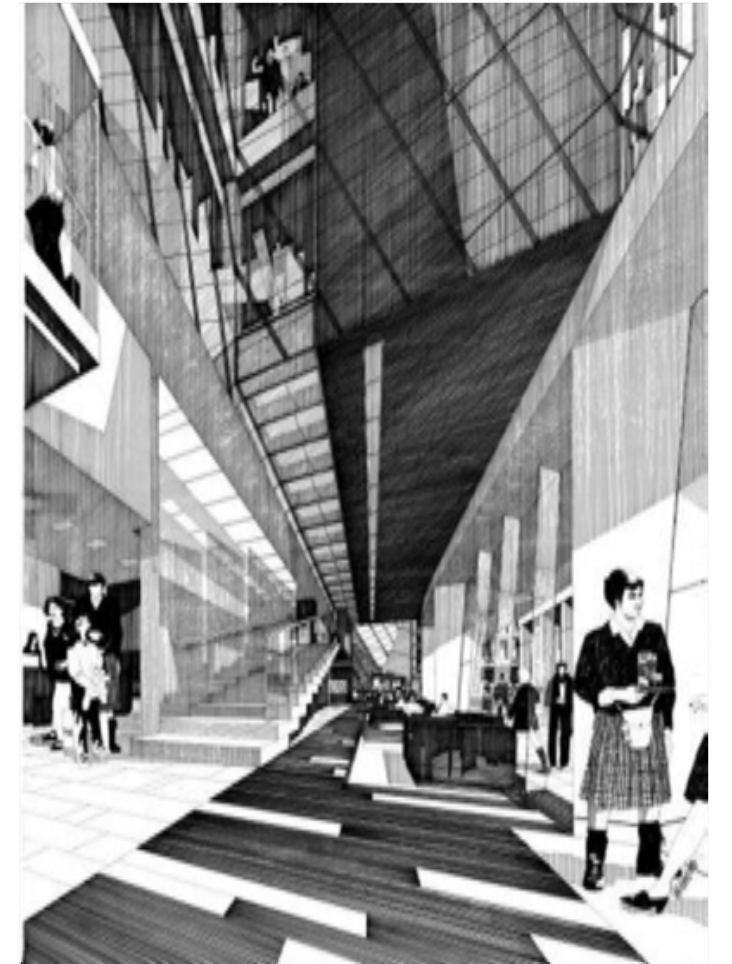


The Radisson Blu : The hotel is located within a once rundown area of the city which is now part of Glasgow's new financial services district and an interesting response to an uninspiring context. The dominant feature is a 60 metre long sculptural wall, clad in pre-patinated copper. The wall accommodates the shift from the city's Victorian grid edge on the north side, to the older street line to the south which stretches down to the river.

A full height atrium sits between the wall and the main body of the hotel. At ground level the atrium is fully glazed onto the street and has a number of public functions, including a restaurant and bar. Glass lifts glide up and down the five storey atrium and guests cross a glass bridge to a suite of specialist rooms.

Internally the sculptural wall is clad in timber to look like steel plate, reminiscent of the great ships that were once built nearby.



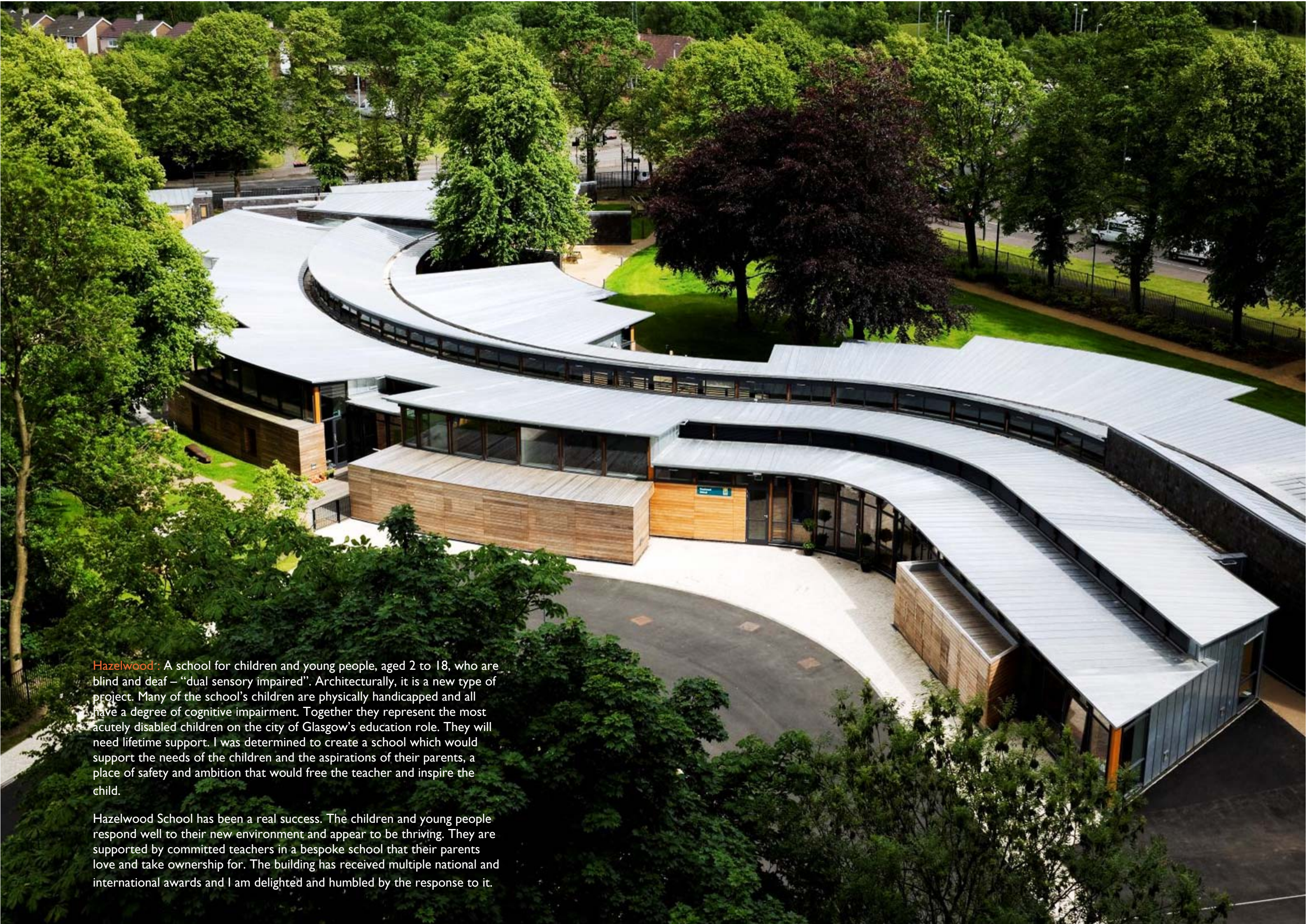


The Sentinel Building : An opportunity to create something special in Glasgow, something that you would not expect in a commercial project and underline the principle that making a building first rate architecture and also a real commercial success are not incompatible objectives.



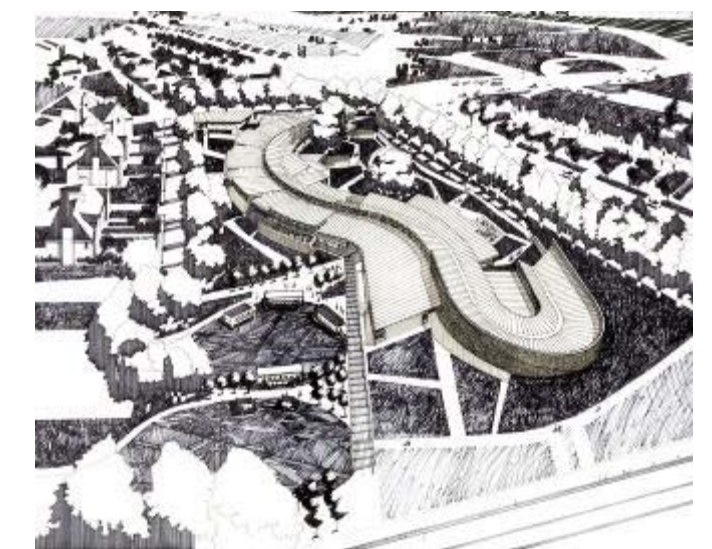


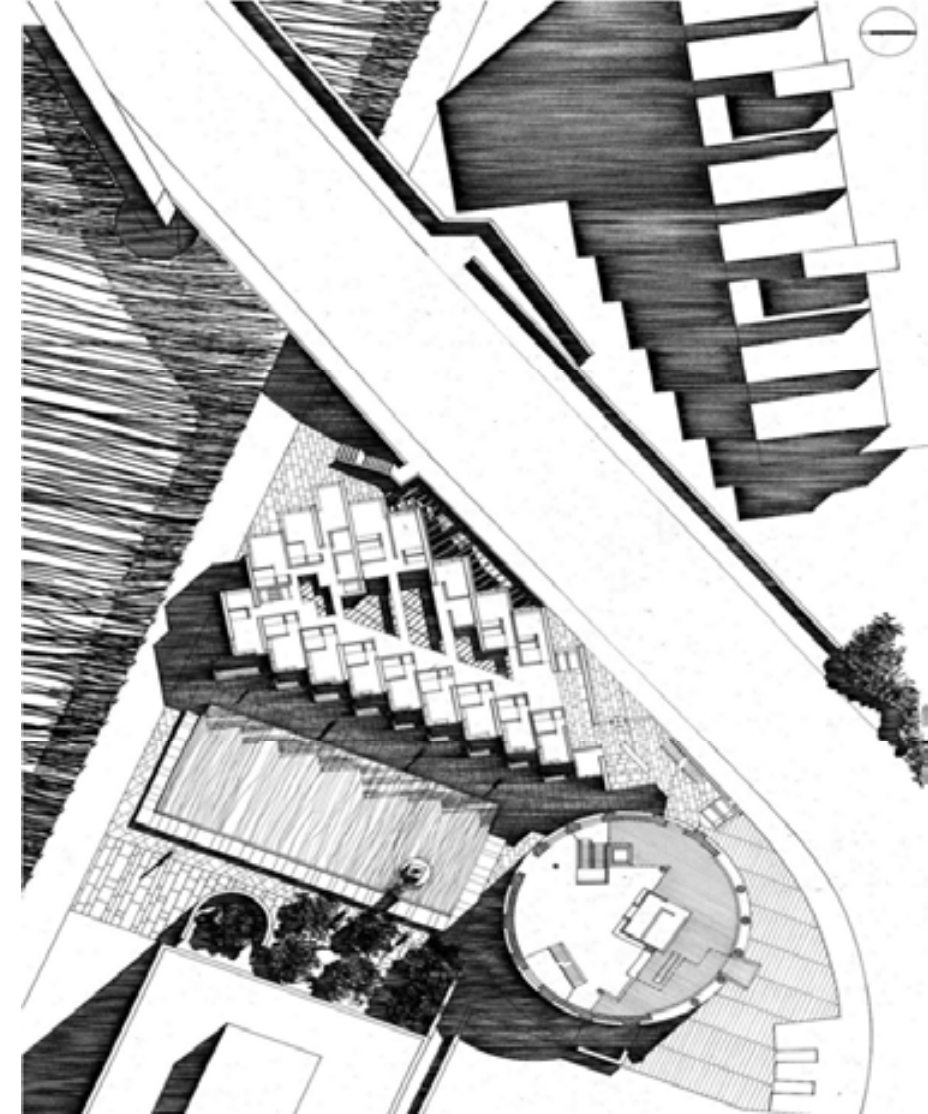
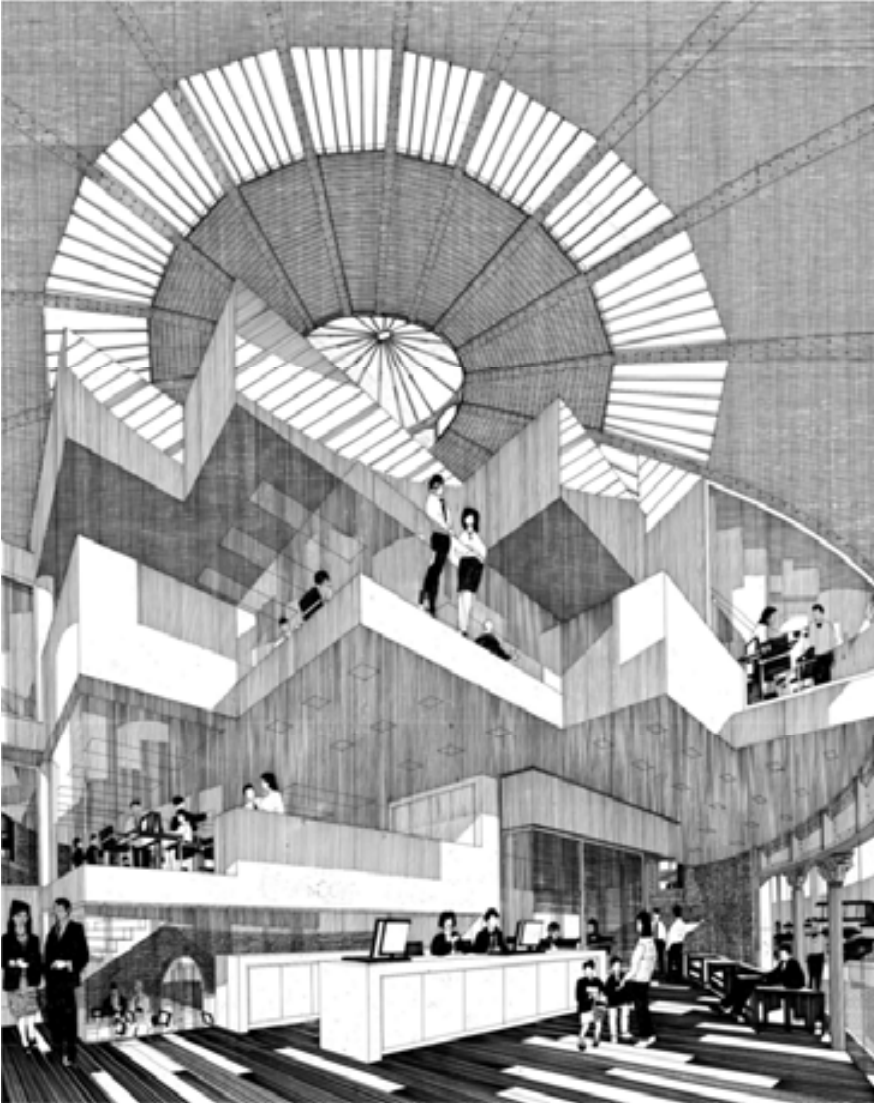




Hazelwood: A school for children and young people, aged 2 to 18, who are blind and deaf – “dual sensory impaired”. Architecturally, it is a new type of project. Many of the school’s children are physically handicapped and all have a degree of cognitive impairment. Together they represent the most acutely disabled children on the city of Glasgow’s education role. They will need lifetime support. I was determined to create a school which would support the needs of the children and the aspirations of their parents, a place of safety and ambition that would free the teacher and inspire the child.

Hazelwood School has been a real success. The children and young people respond well to their new environment and appear to be thriving. They are supported by committed teachers in a bespoke school that their parents love and take ownership for. The building has received multiple national and international awards and I am delighted and humbled by the response to it.





South Rotunda : In 1895, the Glasgow Harbour Tunnel Company's pride and joy, the North and South Rotundas were about to be opened after five years of excavating under the Clyde.

For nearly eighty years the tunnel connecting both rotundas provided a safe crossing for pedestrians and goods.

Today, the south rotunda stands alone and neglected, bordered by new roads and left over green space.

These proposals indicate how the south rotunda could be once again brought into use and re-connected with the river through well designed master-planning and place-making.



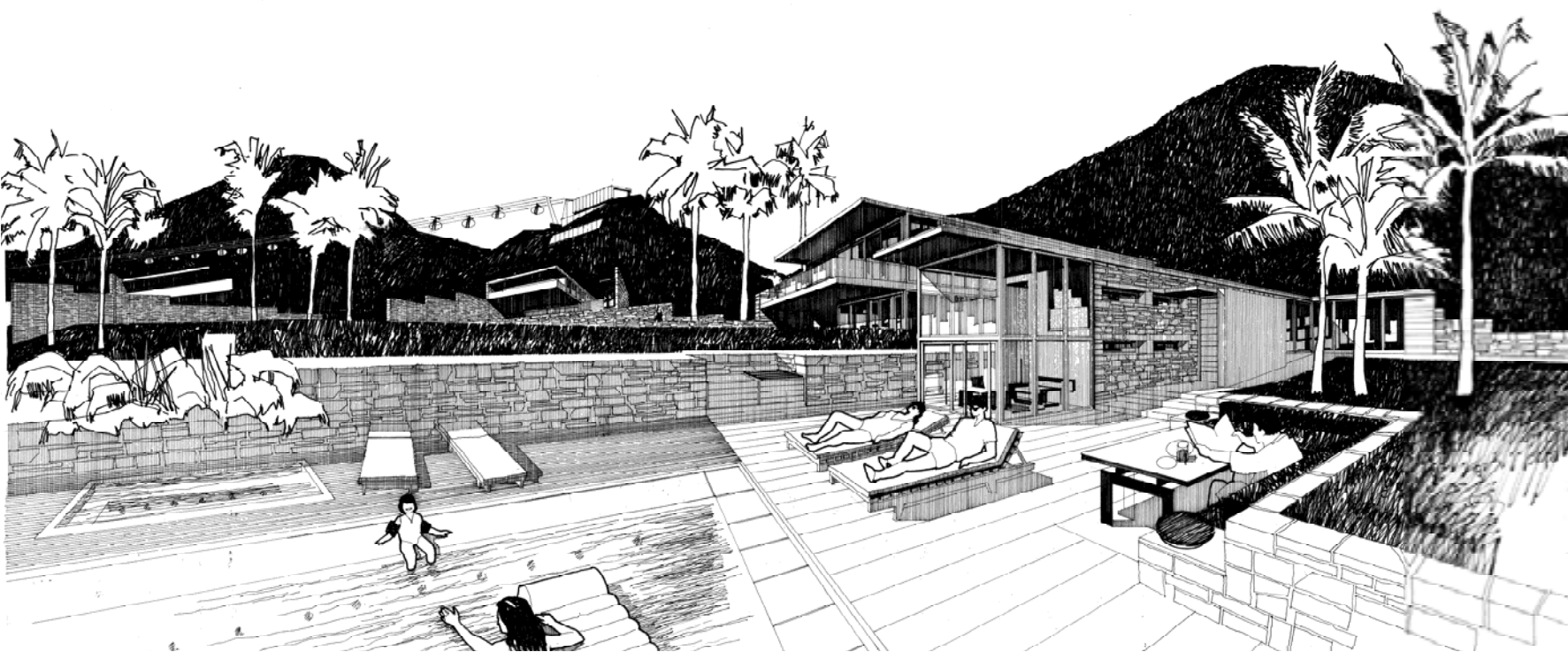
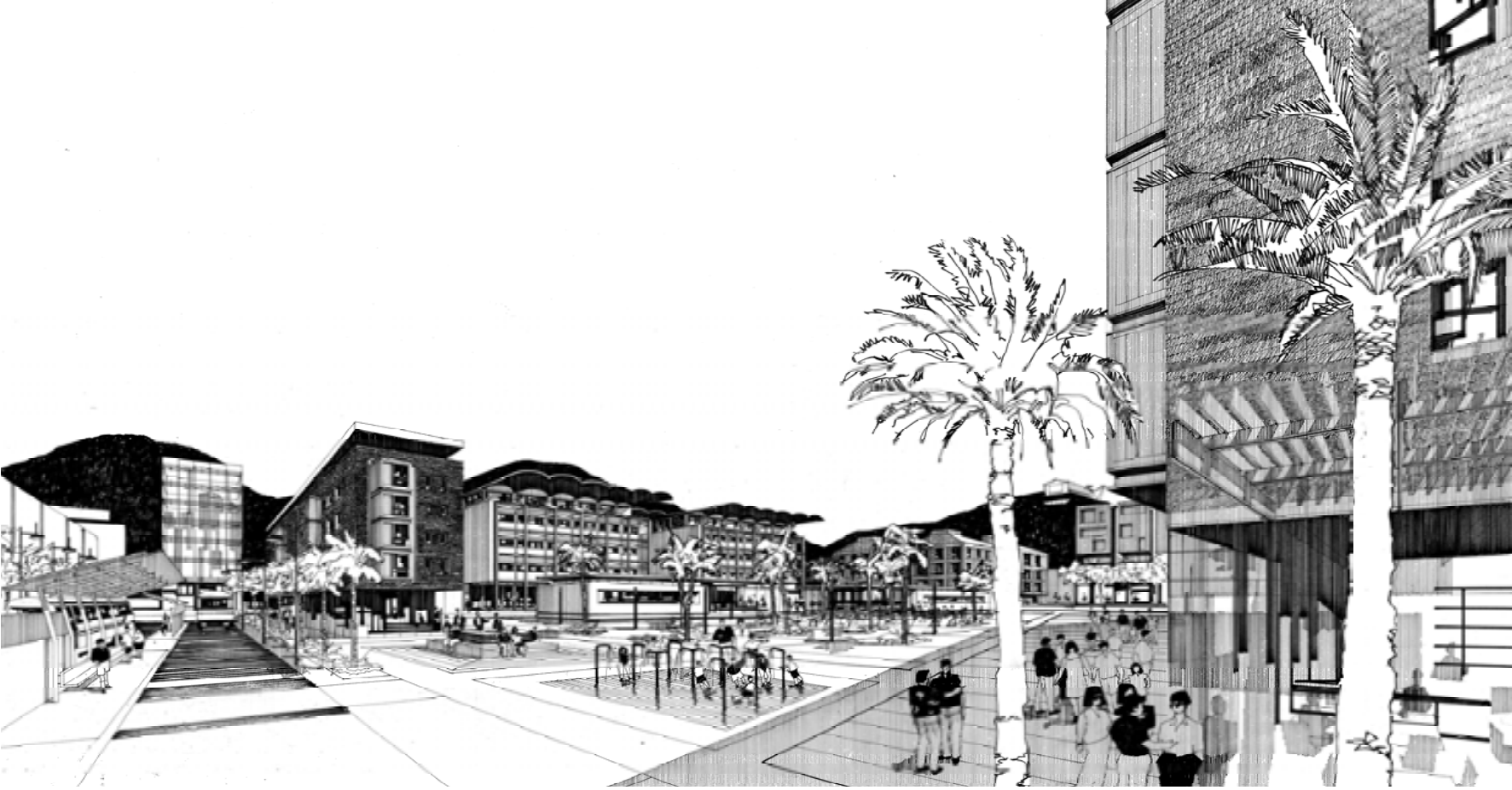
Shenzhen Project:

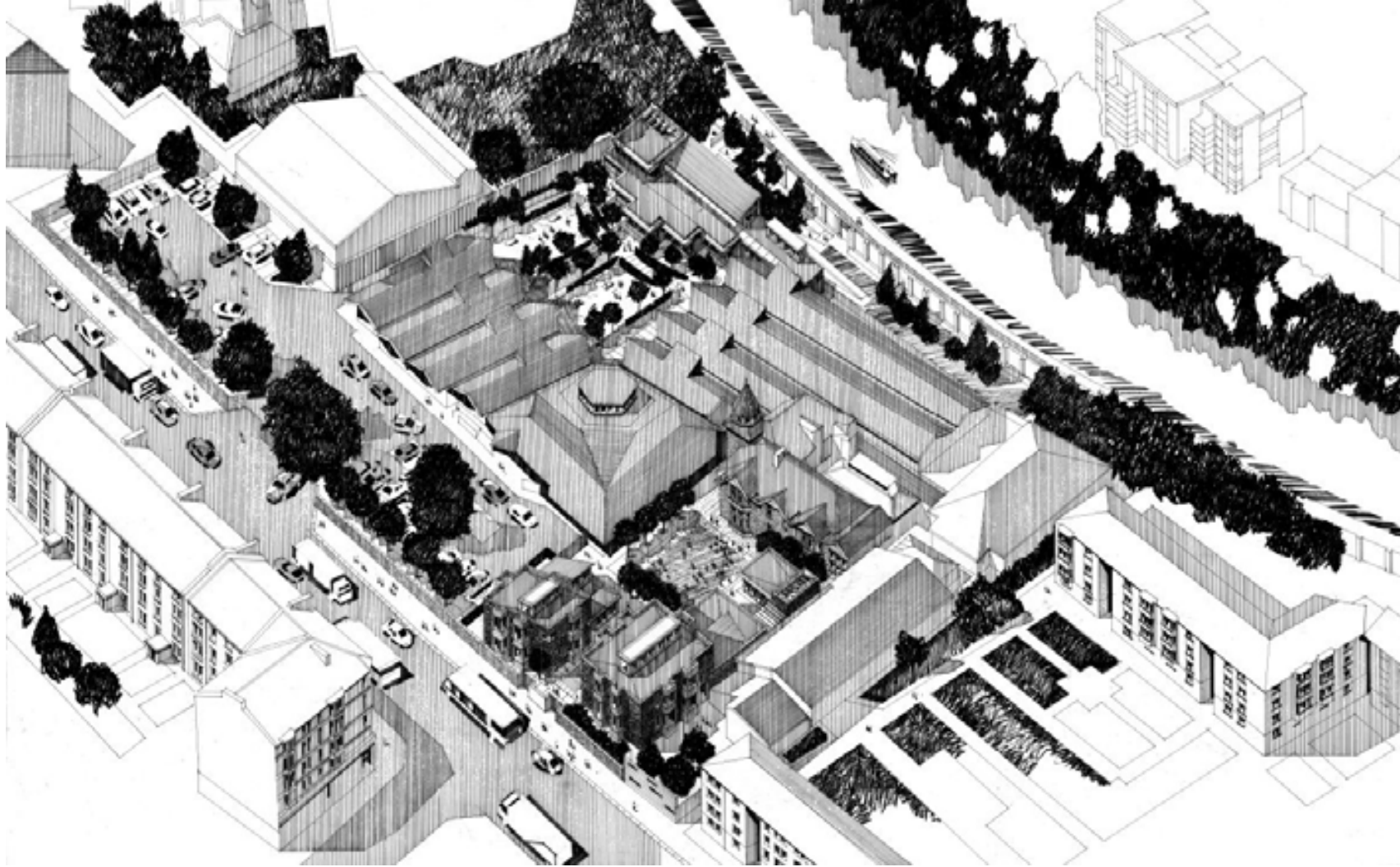
150-hectare seaside resort in Shenzhen. Organised by the Binhai Authority of Shenzhen.

The project will create an international tourist destination and ecological seaside resort on the Dapeng Peninsula. The brief called for designs which work with the existing terrain and ecological conditions of the area. The project seeks to establish a major conservation zone for ecological and biological resources.

A demonstration area for China's marine and scientific development industries is also planned.

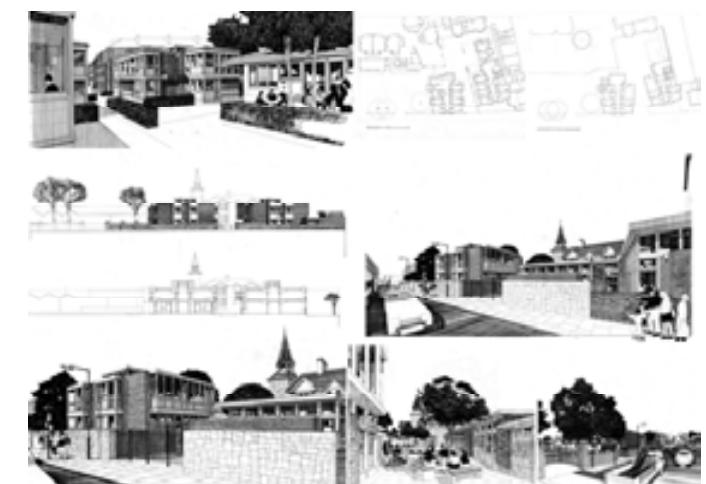
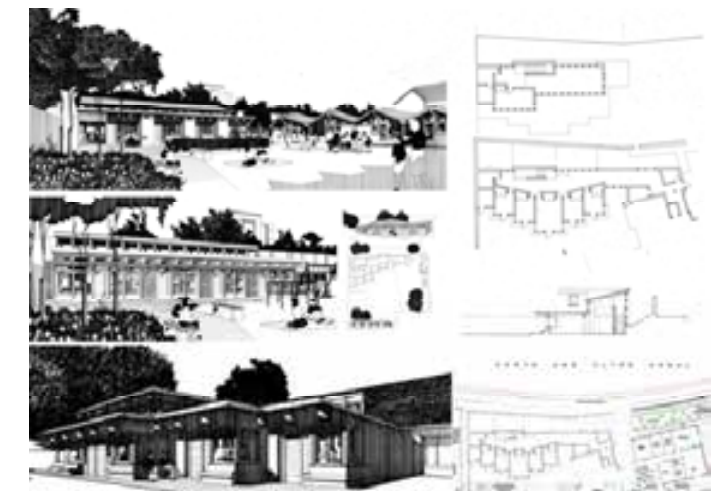
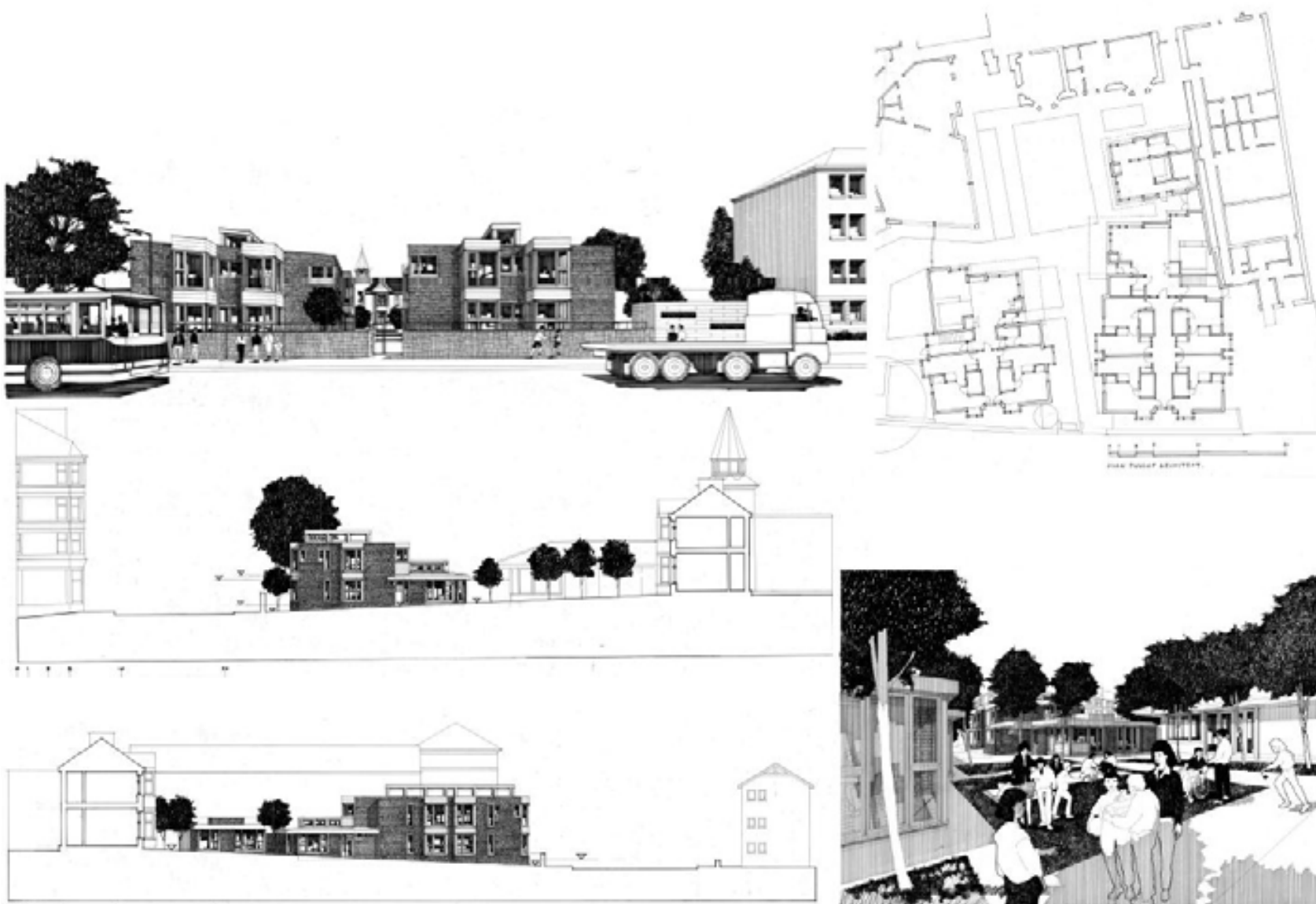






East Park: Starting on Site in 2014

By focussing on international standards of best practice for the residential and educational care of young people with autism, East Park is designed to encourage free movement and to establish a sense of independence while ensuring a safe and secure learning and living space and create a pleasurable environment for pupils and teachers with easy access to green space within a dense urban setting.

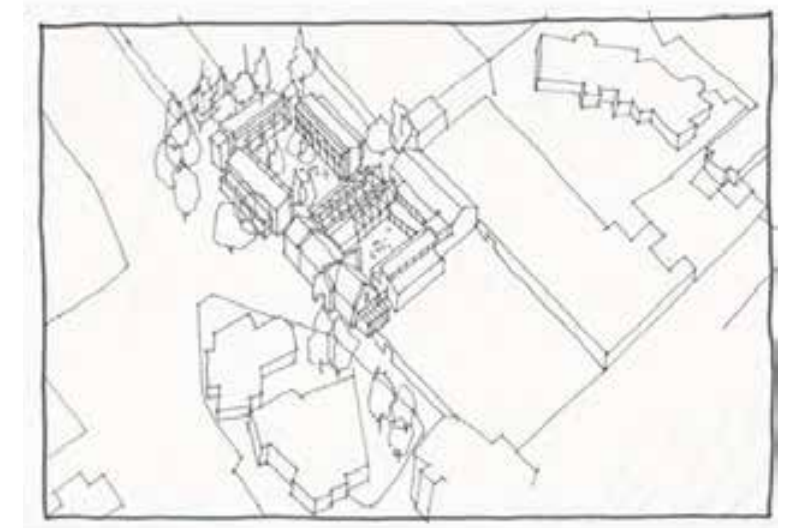




New School: Rural Perthshire Early Stages of Design

This new school and residences with workshops and studios for young people with special needs including autism is set within a stunning rural landscape. The school is grounded in the ethos of the Camphill Movement which creates a community where people can live and work together in healthy social relationships.

Young people who can be disoriented and confused easily and whose behaviour can deteriorate with boredom and anxiety to the point of aggression, can be helped to manage these negative characteristics by a supportive physical environment provided by sensitive Architecture and careful design.





Lecture at School of Architecture
XJTLU
Suzhou



Chairing conference debate
Masterplanning the Future Conference
Suzhou



SELECTED LECTURES:

Making Architecture: Three Projects

American Institute of Architects International Convention 2014

Big Lessons from a Small Place:

Masterplanning the Future

Working Drawing:

Architect's Journal

Big Ideas from a Small Place:

American Institute of Architects International Convention 2012

Hazelwood School:

Royal Incorporation of Architects in Scotland Annual Convention

The School as a Home for the Mind:

Public Lecture, Glasgow Royal Concert Hall

Glasgow's Riverfront:

Illinois Institute Of Technology

Big Ideas from a Small Place:

Oscar Ekdahl Memorial Lecture

Kansas State University

Working Drawing:

Distinguished Regnier Chair in Architecture Public Lecture

Teasing the Grid:

Kansas City Library Public Lecture

Thought Lines:

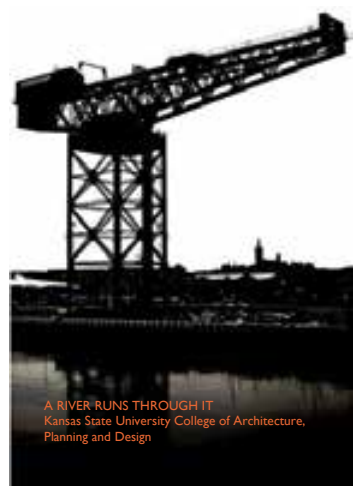
Mahlum Endowment Lecture, University of Washington

RED:

Dessau Institute of Architecture, Bauhaus School

Threads:

Build Boston



A RIVER RUNS THROUGH IT
Kansas State University College of Architecture,
Planning and Design

SELECTED BIBLIOGRAPHY:

Big Lessons from a Small Place:

International Peer Reviewed Conference Paper October 2012

Design Like You Give a Damn (2):

Architecture for Humanity May 2012

Spandrel:

Journal Of Planning and Architecture Bhopal

New Dimensions in Research of Environments for Living May 2012

Aberdeen Library:

Alan Dunlop: Architect's Journal December 2011

The Art Of Drawing:

Alan Dunlop: Urban Realm October 2011

Capturing Zaha:

Alan Dunlop and Patricia Cain: Architect's Journal October 2010

Glasgow City Mission:

Alan Dunlop Architect's Journal September 2010

Working Drawing:

Alan Dunlop: e Architect December 2009

Fettes College Preparatory School, Edinburgh:

Alan Dunlop Architect's Journal 11 June 2009

Opening Credits: Review of John Lautner Exhibition

Alan Dunlop RIBA Journal May 2009

Curious Rationalism:

Published Monograph 2008

Moorfields: Richard Desmond Children's Eye Centre

Alan Dunlop Architect's Journal 26th April 2007

RSC Courtyard Theatre:

Alan Dunlop Architect's Journal 7th September 2006

Challenging Contextualism:

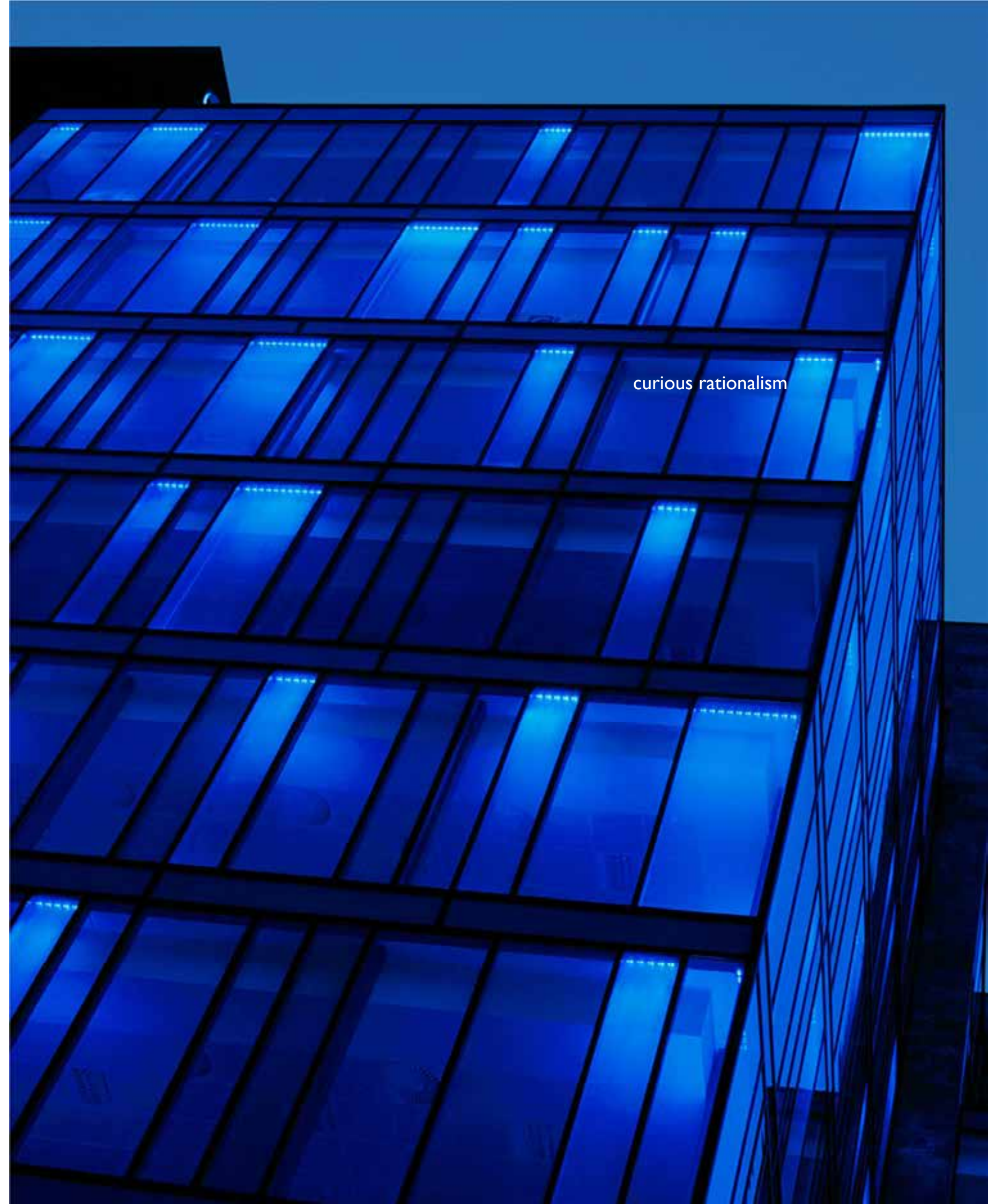
Published Monograph 2006

My Architect: Interview with Nathaniel Kahn and Susan Behr

Alan Dunlop Prospect Magazine August 2005

Acclaim for Hero Hides Ireland's Confidence

Alan Dunlop Irish Times March 2002



SELECTED AWARDS:

British Council For School Environments Award

IDA International Design Award

Royal Institute of the Architects of Ireland Award

WAN Awards: World Education Building of the Year, Second Placing

Royal Scottish Academy: Royal Gold Medal for Architecture

Civic Trust Award

Design Share ; Honor Award

Premio Internazionale Dedalo Minosse Alla Committenza di Architettura

Chicago Athenaeum Museum Of Architecture and Design International Award

Royal Institute of British Architects Award

British Construction Industry Award

Royal Institute of British Architects Award

Royal Institute of British Architects Award

European Hotel Design Awards: Best Hotel

Joint European Union Europa Nostra Cultural Heritage Award

Scottish Design Award Grand Prix for Architecture

Royal Institute of the Architects of Ireland Special Award

Chicago Athenaeum Museum Of Architecture and Design International Award



(Not) Black and White



SELECTED EXHIBITIONS:

1996 to 2009:

Royal Scottish Academy

1999/2003:

Royal Academy

1998 :

Final Shortlist Exhibition: Scottish Parliament Competition

2004:

Landforms: Venice Biennale; Rotterdam and Marseilles

2004:

Big Ideas in a Small Place: RIAS Festival Exhibition and RIBA

2004:

6000 Miles: The Lighthouse and RIBA

2005:

(Not) Black and White: The Lighthouse

2006:

Architecture in Scotland 2006-08. Biennale Exhibition: The Lighthouse

2007:

10/10

Best Buildings in Scotland: RIAS Festival Exhibition

Royal Incorporation of Architects in Scotland

2009:

World Architecture Awards: Barcelona

2010:

IHCD Alan Dunlop Architect

Build Boston, Boston Mas.

2012:

Working Drawing

House for an Art Lover

Landforms





Working Drawing :
Exhibition and Masterclass



Spectrum House





JKS Workshops : Inexpensive start up warehouse units with a design edge.

The brief was straightforward and the budget tight. The blocks are basic but lifted by the use of strong colour, light boxes and pattern. Known as the Castle Stitch, the pattern gives the units a distinct identity and was used on Singer sewing machines. The Singer company was one of the areas largest employers until the factory closed in 1980.





Alan Dunlop is one of the UK's leading architects and a respected educator.

His studio is design led but retains a strong sensitivity to the commercial interests of its clients

In practice, he has won over fifty national and international awards, including Europa Nostra; Royal Institute of British Architects Awards; the Scottish Design Awards: Grand Prix for Architecture; a Special Award from the Royal Institute of the Architects of Ireland; a British Construction Industry: Best Practice Award; a Designshare Honor Award and three International Architecture Awards from the Chicago Athenaeum.

His project for Hazelwood School was listed as one the top five schools of the 21st Century by Architectural Record.

He is currently visiting professor at Robert Gordon University, Scott Sutherland School of Architecture. He has taught at schools of architecture in the USA, UK and Germany and also lectured internationally. He regards the education of young architects as both an obligation and a privilege and brings enthusiasm, ambition and authentic commitment to the task.