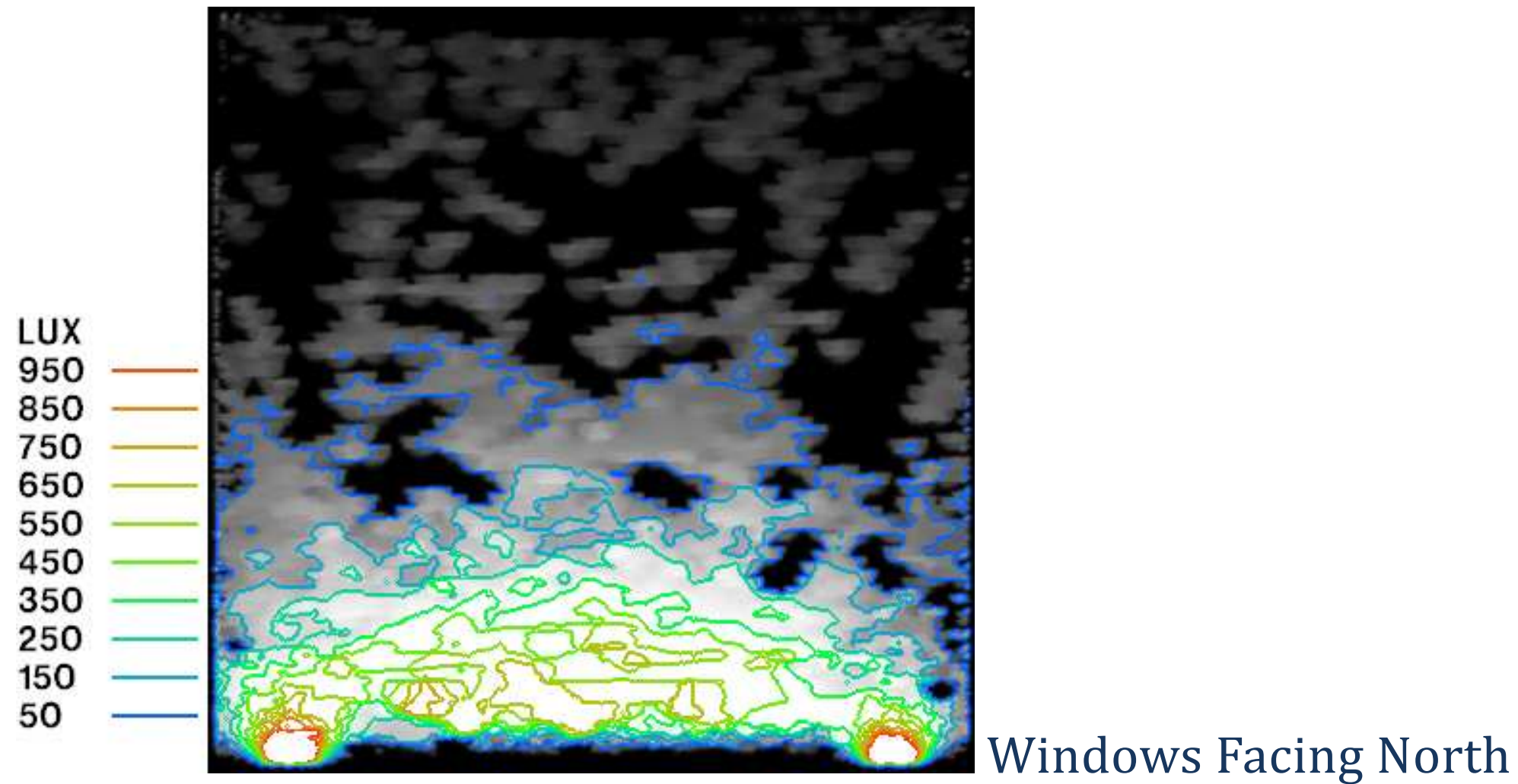


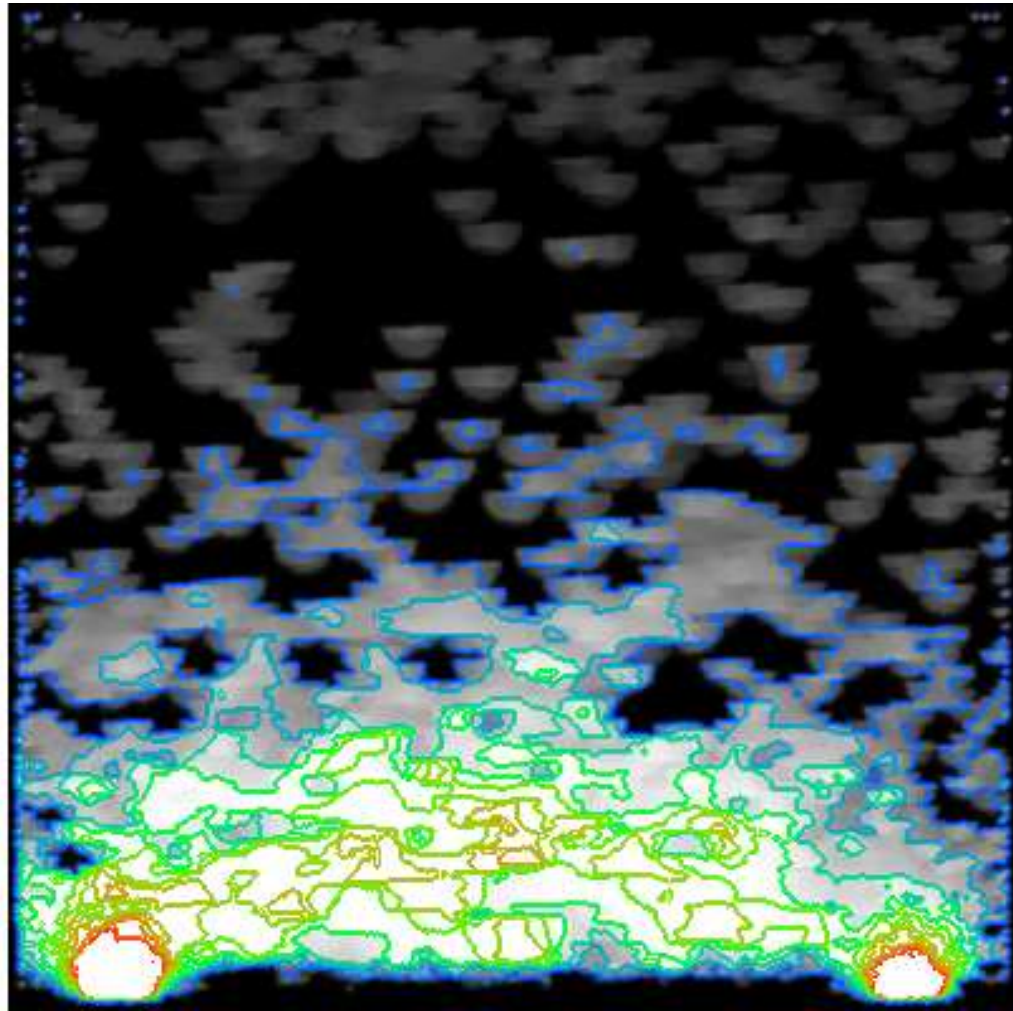
## Classroom – Phoenix – Equinox (Sept 21/March 21) 9 am

---

10 Lux = 1 Foot candle - Approximately. So you see a range of 5 to 95 fc on the following images. This analysis is on a cloud covered sky, so the actual levels will be much larger.

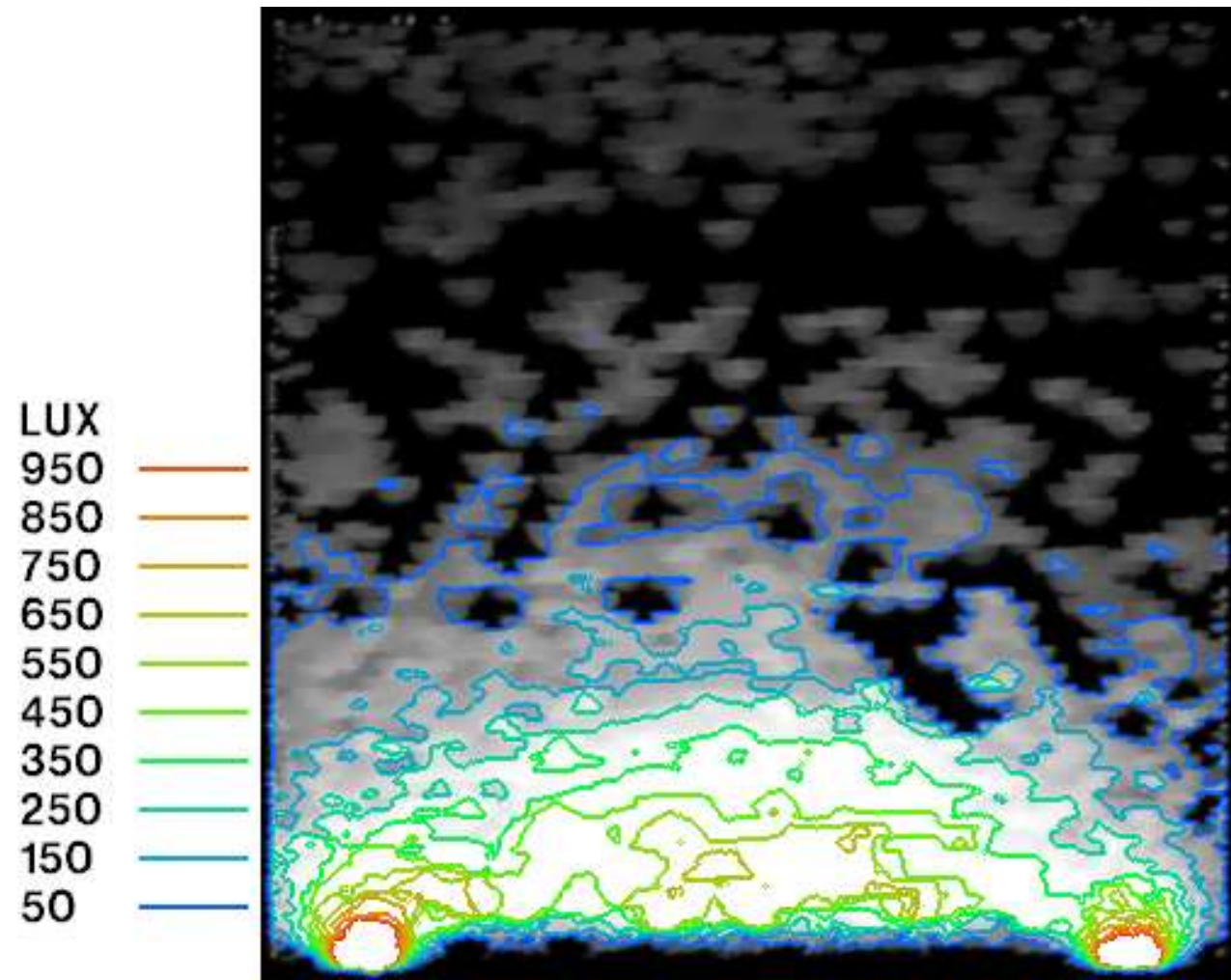


LUX  
950  
850  
750  
650  
550  
450  
350  
250  
150  
50



Windows Facing South

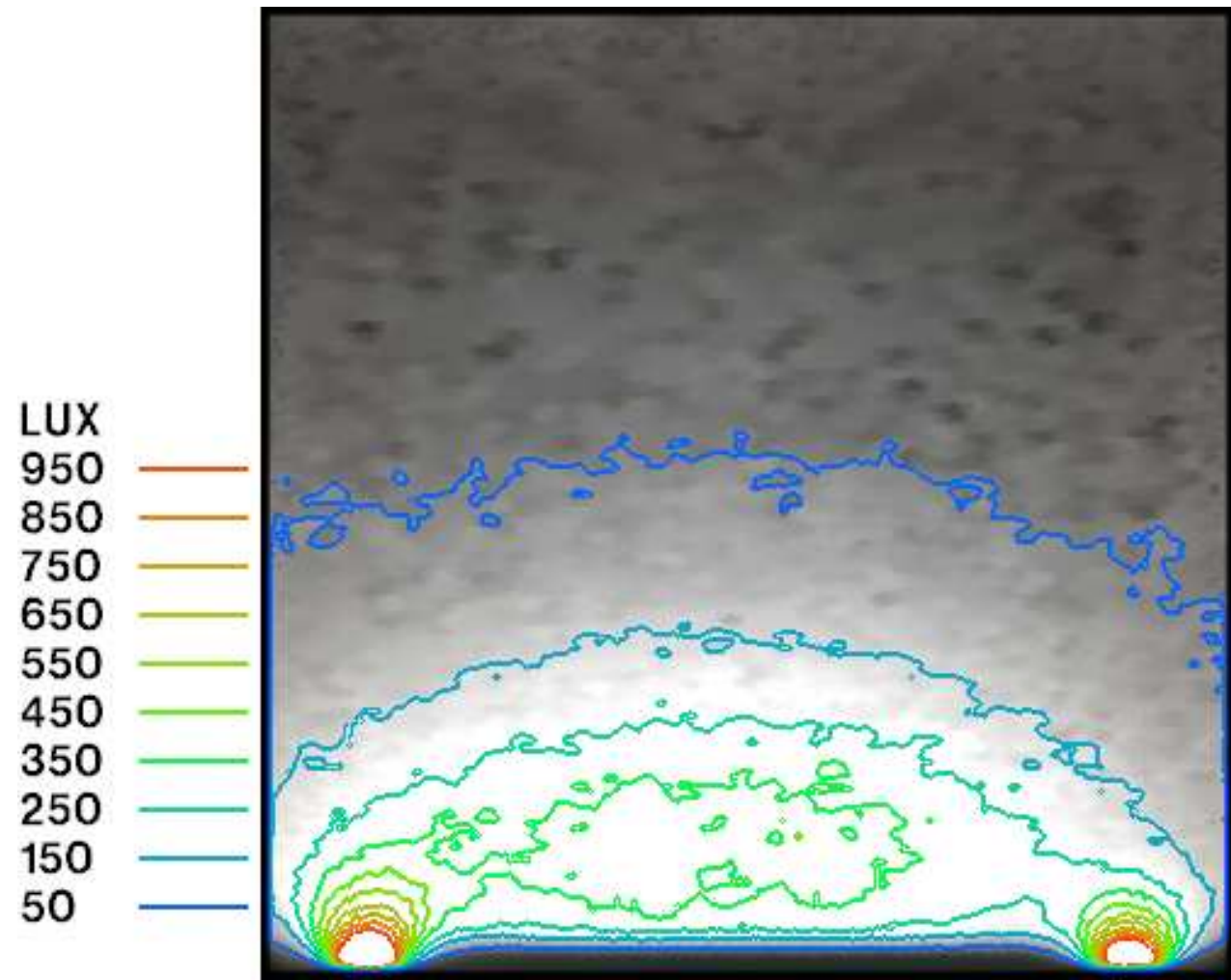
---



Window Facing South – With 1'-0" Ext. Shelf

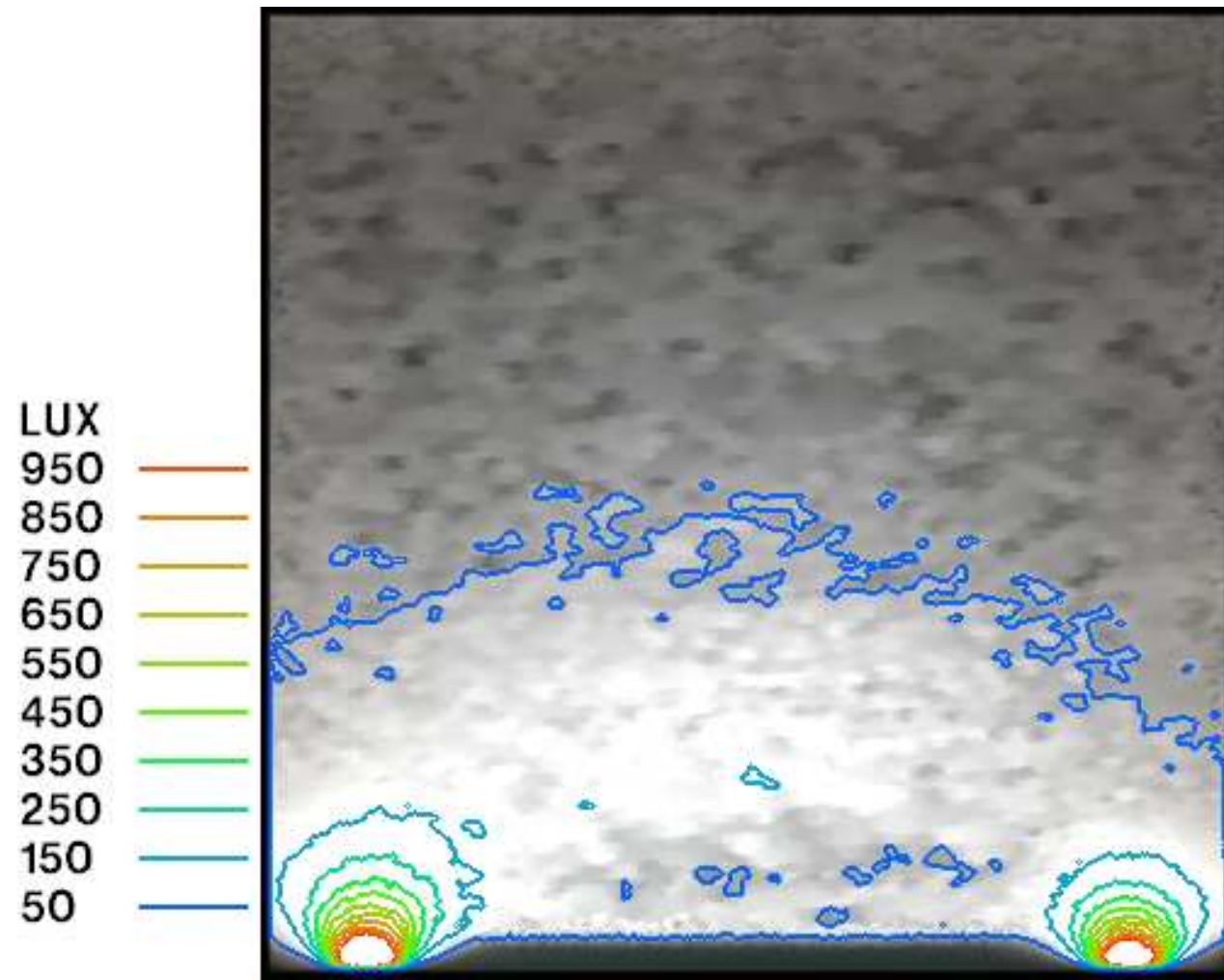
---





Windows facing South-1'-0" Ext Shelf + Fins at 6' O.C

---



Window Facing South – 1'-0" Int. & Ext. Light shelf +

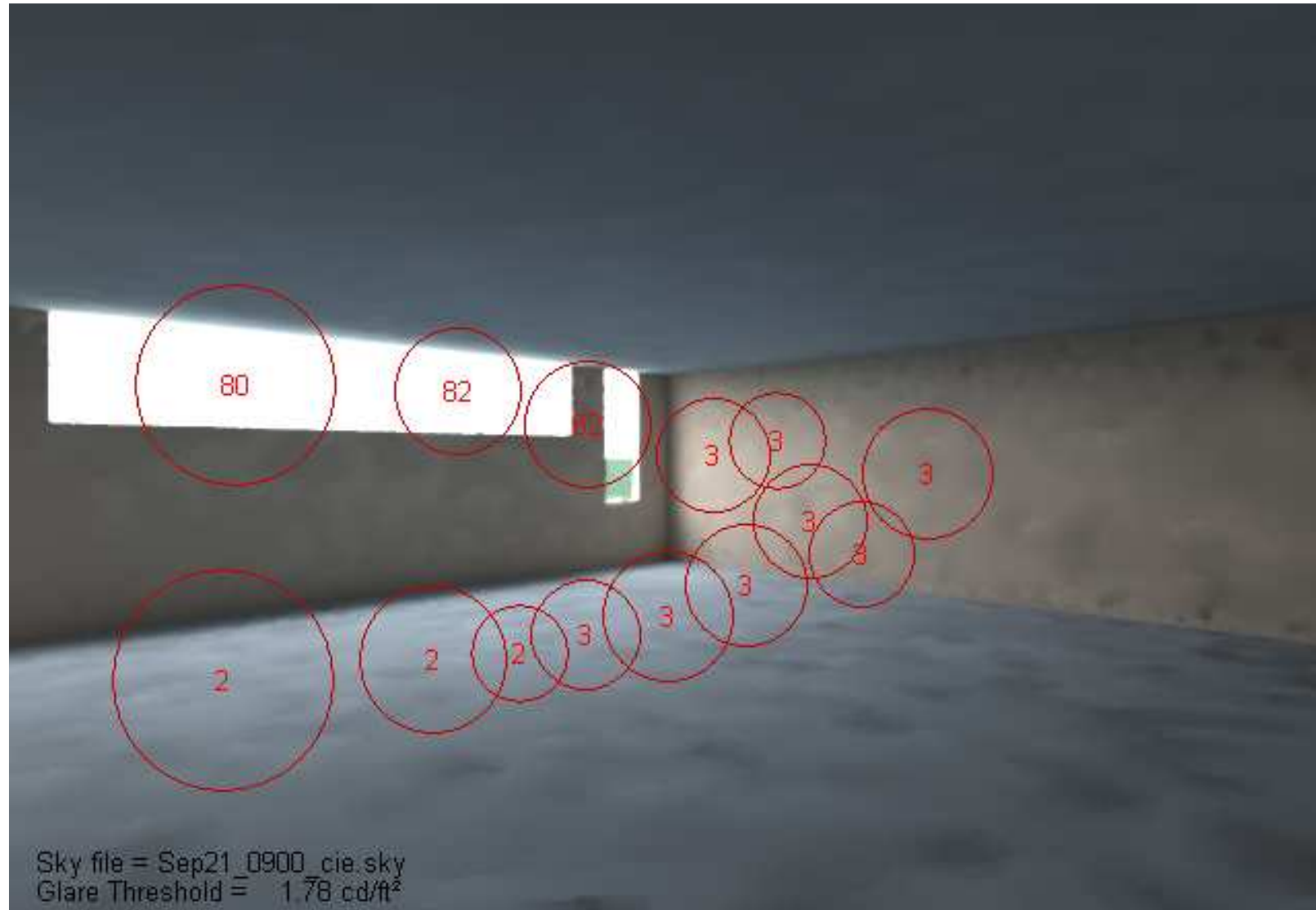
Vertical Fins at 6'-0" Interval

---

# Glare Analysis – Looking at the East Wall in a classroom with Windows Facing South

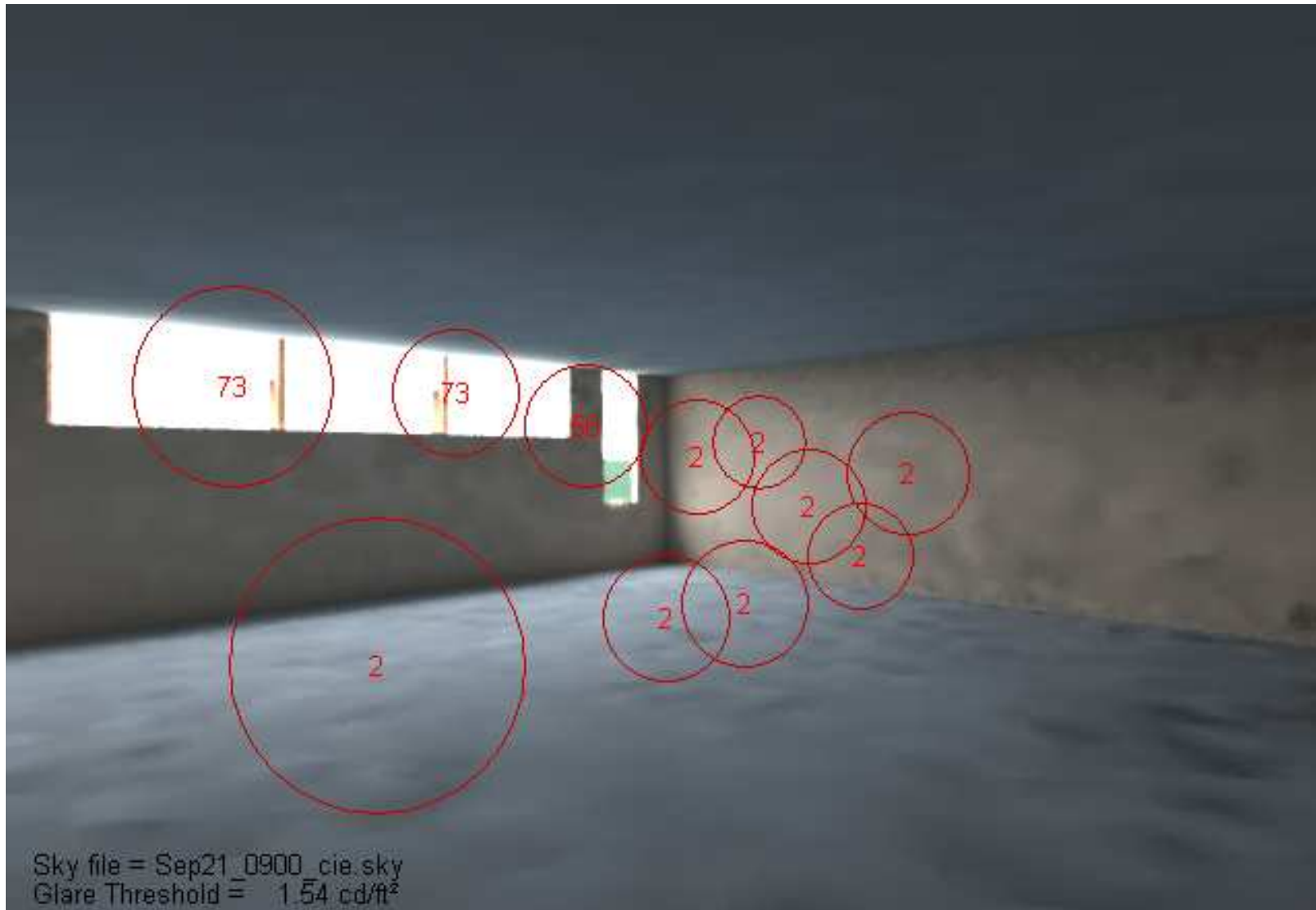
---

Number within the Circle: 1 = 7 times the average light reflected off the surfaces in the room. So the larger the number in the circle, the more glare it will be



1'-0" Exterior Shelf

---



1'-0" Exterior Shelf with Fins at 6'-0" O.C.



1'-0" Int/Ext Shelf + Fins at 6'-0" O.C.

---