



**NJIT Studio**

**Two Newark Precincts Critical Analysis**

# Copyright Notice

This presentation is protected by US and International Copyright laws. Reproduction, distribution, display and use of the presentation without written permission of the speaker is prohibited.

© The American Institute of Architects 2018

# AIA/CES Compliance Statement

“AIA Knowledge” is a Registered Provider with The American Institute of Architects Continuing Education Systems (AIA/CES). Credit(s) earned on completion of this program will be reported to AIA/CES for AIA members. Certificates of Completion for both AIA members and non-AIA members are available upon request.

This program is registered with AIA/CES for continuing professional education. As such, it does not include content that may be deemed or construed to be an approval or endorsement by the AIA of any material of construction or any method or manner of handling, using, distributing, or dealing in any material or product.

Questions related to specific materials, methods, and services will be addressed at the conclusion of this presentation.

# AIA/CES Reporting Details

All attendees will be eligible to receive AIA continuing education for attending this course by completing the electronic form sent via email after the conference.

Continuing education questions can be directed to [aaaj@aia.org](mailto:aaaj@aia.org).

# Course Description

Within our social and political climate, including increased apprehensions about national security set amidst aggravated racial tensions within certain communities, there is perhaps no civic institution under greater scrutiny than our law enforcement agencies and the police who serve within them.

# Learning Objectives

1. Develop an understanding of Police Facilities in the Community Context and complexity of the social/economic/political conditions.
2. Understand the interfaces between the Community and Police within the facility considering different solutions for access, separation, transparency and security.
3. Explore the complexity of the situations which have recently brought greater attention to the role which police play.
4. Learn the programmatic requirements to facilitate community engagement and delivery of safe and effective police services for precincts.



Thomas Navin, AIA, ASLA

NJIT Newark, New Jersey



- **Senior University Lecturer at the NJIT College of Architecture and Design**
- NJIT Professor for Undergraduate and Graduate Studios
- Practicing Architect in NYC

Steve Loomis, FAIA LEED AP  
AECOM Norfolk, Virginia



- **90 + Public Safety projects in the United States and Abroad**
- NJIT Law Enforcement Studio Advisor
- Brings Research Basis Supporting their Design Thesis



Nick Seierup, FAIA

Perkins+Will Los Angeles, California



- **Perkins+Will Design Principal,  
20 Years**
- National Next-Generation Justice Facility Expert
- Program/Site Analysis Assistance,  
Final Studio Review Juror

Juventino Flores, Jr. (BArch 2019)

Michael Zampolin (BArch 2019)

NJIT Newark, New Jersey



– **Project 1 Students (Site A)**

– 1<sup>st</sup> Precinct Site, Newark NJ

Jason Carvalho (BArch 2019)

Adiel Quiteno (BArch 2019)

NJIT Newark, New Jersey



- **Project 2 Students (Site B)**
- 3<sup>rd</sup> Precinct Site, Newark NJ

Amanda Chebalo, AIA

**AECOM** Norfolk, Virginia



- **20 + Public Safety Facilities throughout United States and Canada**
- AAJ 2017 Law Enforcement Track Chair
- AAJ 2018 JFR Emerging Professional Representative



# NJIT

New Jersey Institute  
of Technology

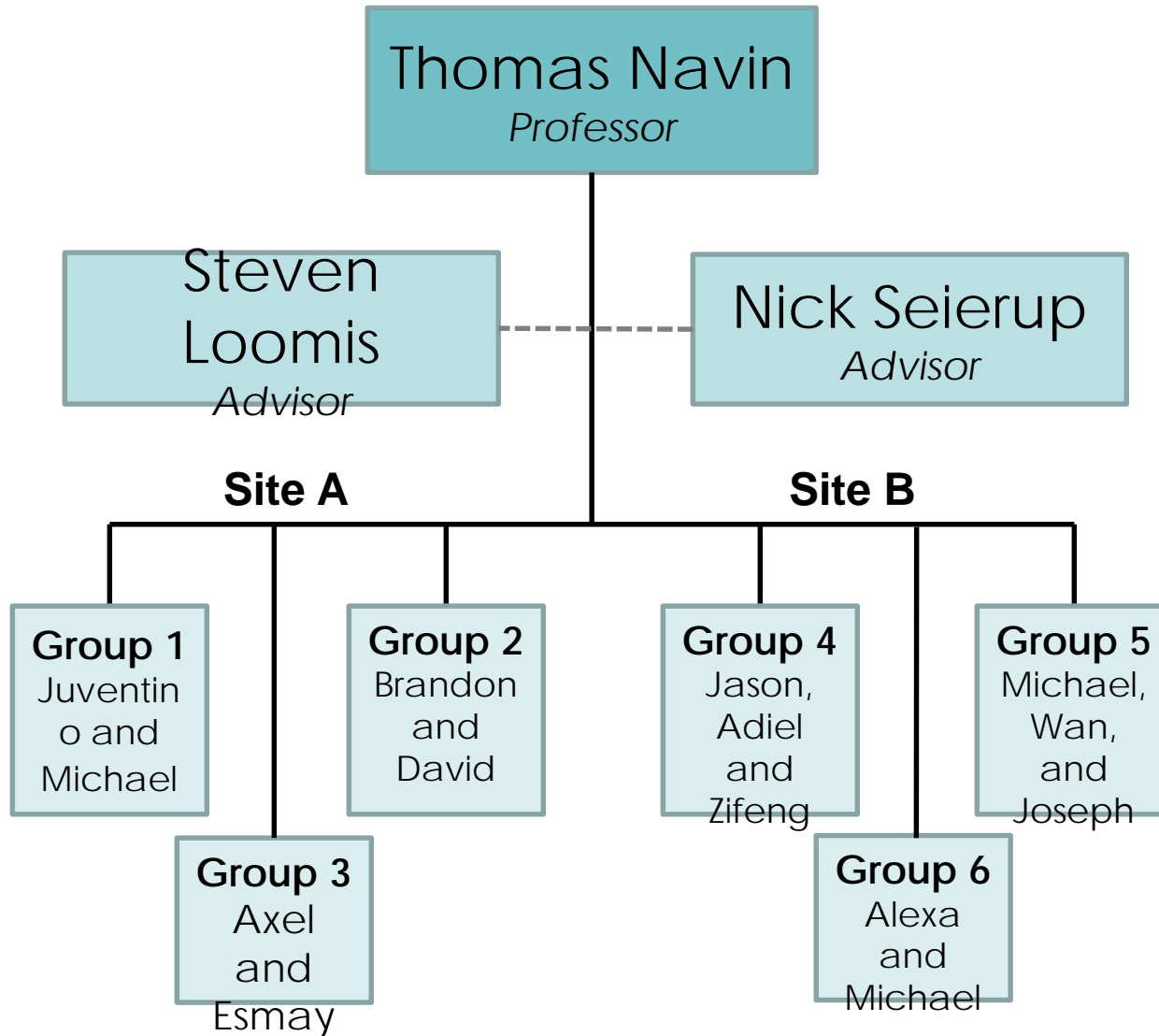
COLLEGE OF ARCHITECTURE & DESIGN

**NJ School of Architecture**

**Undergraduate Pre-professional and Undergraduate and Graduate  
NAAB-Accredited Architecture Degree Programs**



# NJIT Studio Structure



## AAJ/NJIT CoAD Alliance

- Initial communication between AAJ/April Pottorff and NJIT CoAD Assoc. Dean John Cays to discuss potential architecture studio involving justice architecture
- Inclusion of prof. Thomas Navin to offer an upper level Undergraduate studio exploring this topic, to become the “Police Studio”
- Communications between prof. Thomas Navin, Steven Loomis, Nick Seierup and Herb Roth to assemble support materials in Navin’s preparation for the “Police Studio,” including readings and building program examples
- Steven Loomis attended a mid-project review at NJIT
- Steven Loomis and Nick Seierup attended the Final Review of the NJIT studio in May 2018



# NJIT CoAD Options Studio



## Studio Composition

14 - Students

11 Male

3 Female

11 - Fourth Year  
Undergraduate Architecture

1 - Fifth Year  
Undergraduate Architecture

2 - International  
Professional Exchange  
Program (China)



# Intentions for the Studio

To explore the Police Station as a building type which is central to the civic realm of our society.

To propose a physical presence that will heighten awareness of the Police Precinct within the community it serves.

To solicit, through the inherent qualities of architecture, a greater sense of civic pride which can encourage a more humane and civil society, enabling the police to maintain the peace while enforcing the law.

To explore architectural and tectonic ideas about transparency and sense of open-ness, while also addressing concerns about security and privacy.



# Two Sites Considered

The studio considered two sites on which older police precinct facilities already existed.

Each site had distinctly different site and context characteristics.

Two sites provided students with the opportunity to explore how the design of a police facility might be impacted by the character of its surrounding neighborhood in the delivery of police services and in the relations between the police and the community being served.



Site A



Site B

## Newark Police Division

### 1<sup>st</sup> Precinct

10 17<sup>th</sup> Avenue  
Central Ward | *Belmont/Springfield*

### 2<sup>nd</sup> Precinct

1 Lincoln Avenue  
North Ward

### 3<sup>rd</sup> Precinct

649 Market Street  
East Ward | *North Ironbound District*

### 4<sup>th</sup> Precinct

247 16<sup>th</sup> Avenue  
Central + West Wards

### 5<sup>th</sup> Precinct

480 Clinton Avenue  
South Ward

### 6<sup>th</sup> Precinct

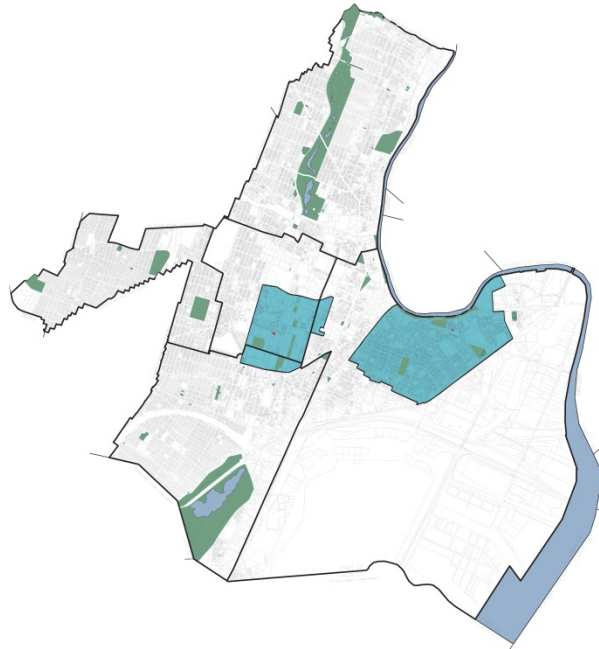
West Ward | *Ivy Hill*  
(Opened in March 2018)

### 7<sup>th</sup> Precinct

515-566 Roseville Avenue  
North Ward  
(Opening November 19, 2018)



# Two Site Considered



## Newark Police Division

### 1<sup>st</sup> Precinct

10 17<sup>th</sup> Avenue

Central Ward | *Belmont/Springfield*

### 2<sup>nd</sup> Precinct

1 Lincoln Avenue

North Ward

### 3<sup>rd</sup> Precinct

649 Market Street

East Ward | *North Ironbound District*

### 4<sup>th</sup> Precinct

247 16<sup>th</sup> Avenue

Central + West Wards

### 5<sup>th</sup> Precinct

480 Clinton Avenue

South Ward

### 6<sup>th</sup> Precinct

West Ward | *Ivy Hill*

(Opened in March 2018)

### 7<sup>th</sup> Precinct

515-566 Roseville Avenue

North Ward

(Opening November 19, 2018)



Site A



Site B

# Project Guidelines

## Foundation Research for the Project

### Readings and Studio Discussion:

- "Sir Robert Peel's Nine Principles," (c. 1830)
- Gurwitt, Rob, "Bratton's Brigade," 2007
- Herbert, Bob, "A Trend is Growing in Policing," 2017
- McCullough, Debra R. Cohen and Spence, Deborah L, Ed., "American Policing in 2022: Essays on the Future of a Profession," September 2012

### Program Analysis + Development: *from the following sources:*

- GGG Architects, "FWPD 6<sup>th</sup> Patrol Division Facility, " 2016. (28,000 sf)
- Perkins + Will, "Pre-design Program for the LAPD Metro Division Station (28,000 sf)
- NJIT CoAD Studio Program Arch 264, Perth Amboy Police Station (14,000 sf)
- Roth Sheppard Architects, "Law Enforcement Facility Design Guidelines"

## METHODOLOGY

Week's 1-4

### Foundation Research

History of Policing

Tour of Newark's  
Department of Public Safety  
Headquarters  
(5<sup>th</sup> Precinct)

Site Visits to the  
1<sup>st</sup> and 3<sup>rd</sup> Precincts

Program Research and  
Development



# Project Guidelines

## Site A



## Site B



## METHODOLOGY

Weeks' 1-4

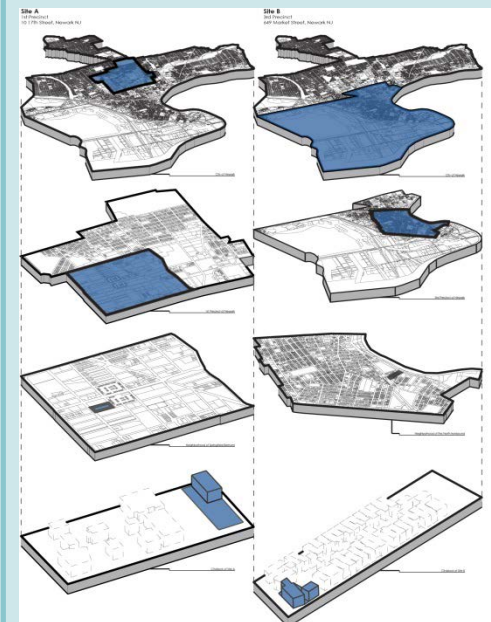
Foundation Research

History of Newark

Site A (1<sup>st</sup> Precinct)

Site B (3<sup>rd</sup> Precinct)

Precinct Program  
Operations Development





# Project Guidelines

Riot Locations



## METHODOLOGY

Weeks 1-4

Foundation Research

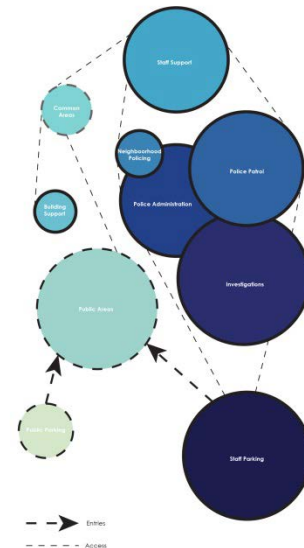
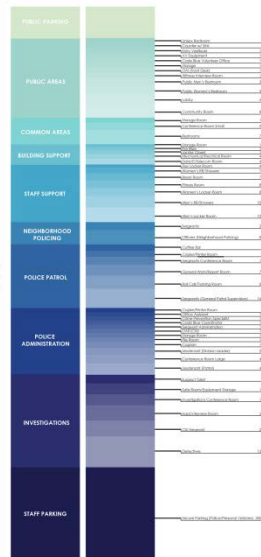
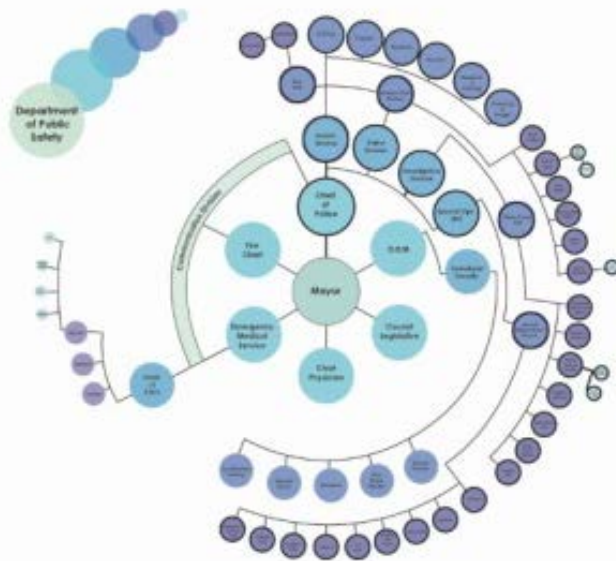
History of Law Enforcement

History of the 1967 Riots

Comparative Demographics  
Newark vs. Statewide

Program Research and  
Development

HISTORY OF LAW ENFORCEMENT



# Site Background - Site A



## Site A: 1st PRECINCT

10 17<sup>th</sup> Street

Central Ward

*Belmont / Springfield Neighborhoods*

Site area: 22,000 sf

### General Characteristics

Open site (3 streets)

Site is sloped

Residential neighborhood  
with numerous schools and  
a prominent church  
adjacent to the site

### Design Team

Juventino Flores, Jr.

Michael Zampolin



# Site Background - Site B



## **Site B: 3<sup>rd</sup> PRECINCT**

249 Market Street

East Ward

North Ironbound Neighborhood

Site area: 10,800 sf

### General Characteristics

Corner site, flat

Tight and congested traffic conditions

Neighborhood with residential, industrial and commercial activities

Restaurants nearby resulting in active night time activity

### Design Team

Jason Carvalho

Adiel Quiteno

Zifeng Li

# Design Process

## METHODOLOGY

Week's 5 – 14

### Project Development by the (6) Design Teams:

Conceptual Studies: iterative thinking

Case study research and analysis

Physical Massing Studies

Design Team: Program Development

Site + Building Program Operations Assessment

Design investigation in plan, section perspective physical study models and 3D modeling.

Analytic diagrams to test/verify/clarify the central organizational components (parti) of the project, relating to the following building systems:

circulation strands / structural / enclosure

Development of a Written State of Design Intent by each of the design teams for their project.





# Project 1: Proposal for Site A



## 1st Precinct

10 17th Ave. at Irvine Turner Blvd.

## *Belmont Beacon*

### Intentions

Approachable / Secure

Corner articulates the civic nature of the building

As a civic building the precinct pays homage to the adjacent church

Sectional organization: front/back and above/below

### Design Team

Juventino Flores, Jr.  
Michael Zampolin

# Project 1: Proposal for Site A



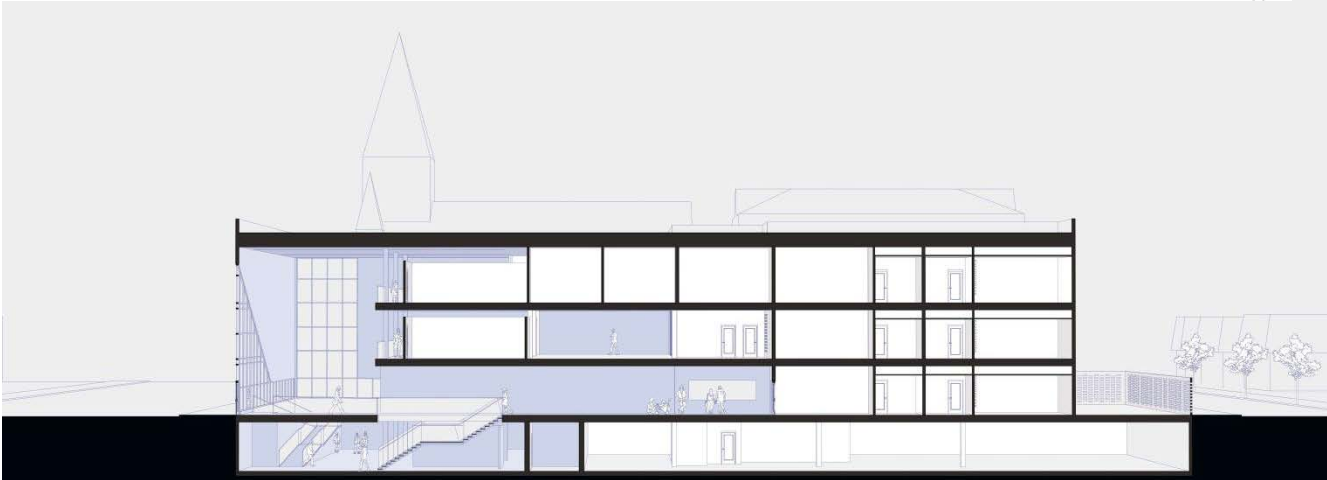
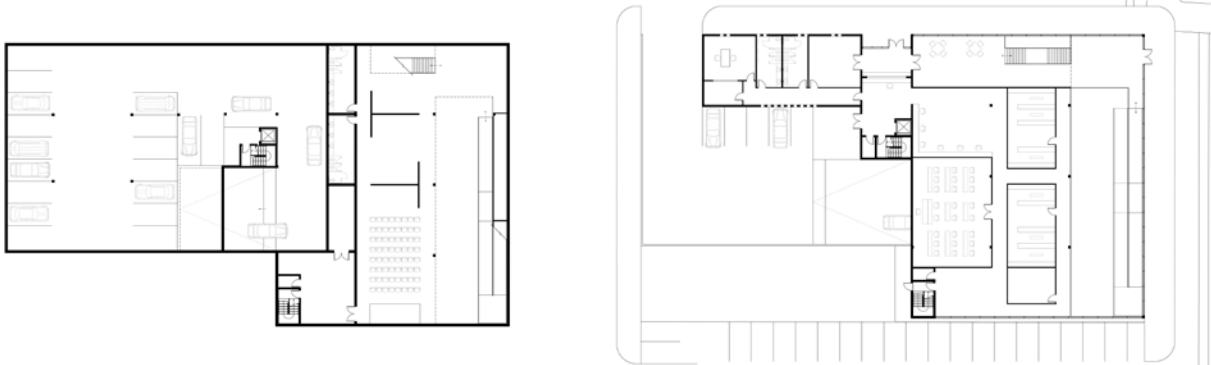
## 1st Precinct

10 17th Ave. at Irvine Turner Blvd.

## *Belmont Beacon*

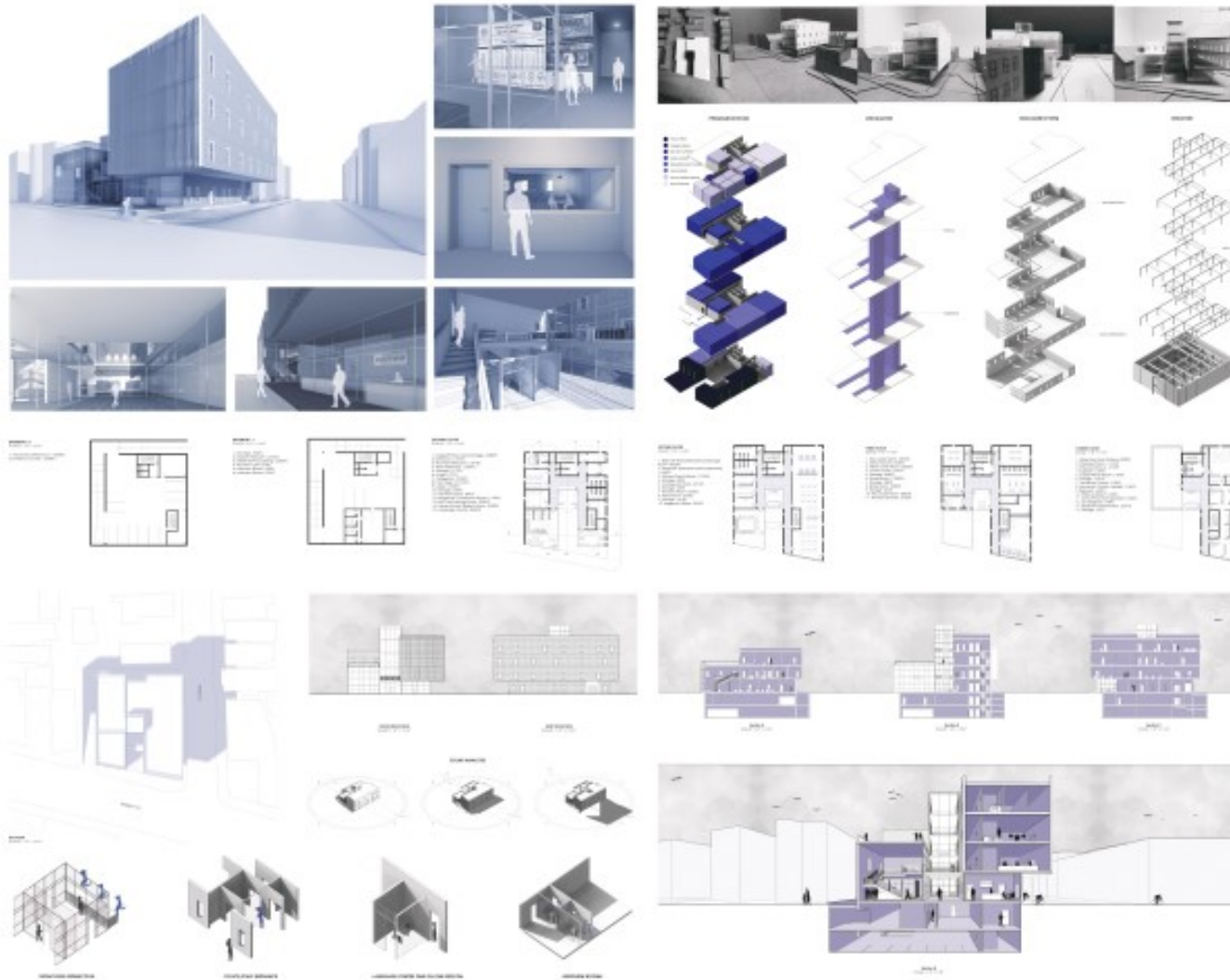
### Intentions

Sectional organization:  
front/back and above/below





# Project 2: Proposal for Site B



**3<sup>rd</sup> Precinct**  
249 Market Street

## ***Splitting Barriers***

### Intentions

Incorporating transparency to express the workings of the precinct.

Operations which serve to interface with the community:

Coffee Bar  
Language

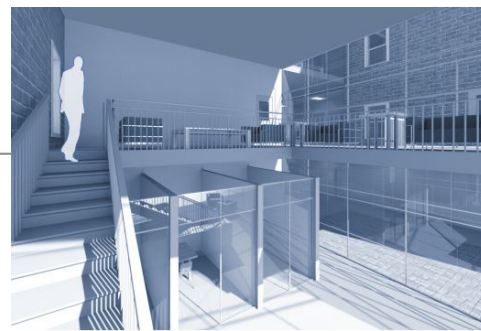
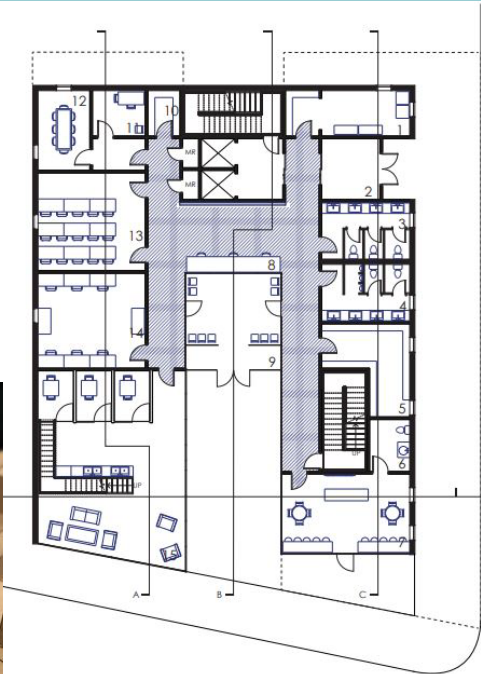
Bicycle usage incorporated into the operations of the precinct

Design Team:  
Jason Carvalho  
Yifeng Li  
Adiel Quiteno

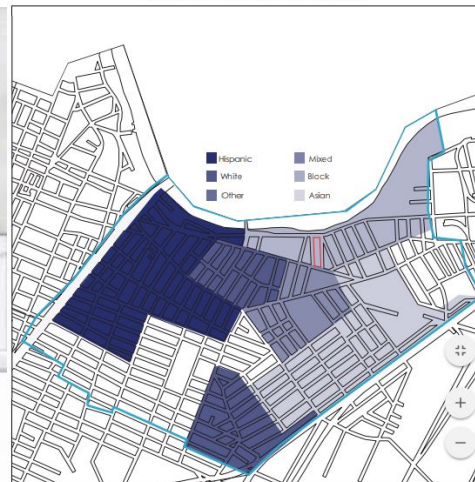
# Project 2: Proposal for Site B

**GROUND FLOOR**  
SCALE: 1'-0" = 1/16"

1. Copier/Printer room/Storage- (208SF)
2. Entrance- (131SF)
3. Womens Restroom- (181SF)
4. Mens Restroom- (180SF)
5. Storage- (217SF)
6. Unisex- (77SF)
7. Coffee Bar- (379SF)
8. Front Desk- (1017SF)
9. Lobby- (344SF)
10. Storage- (54SF)
11. Interview Room- (89SF)
12. Sergeants Conference Room- (154SF)
13. Roll Call/Training Room- (390SF)
14. General Work/ Report Room- (378SF)
15. Language Center- (803SF)

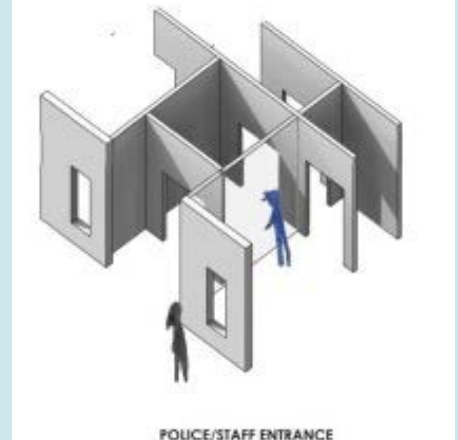
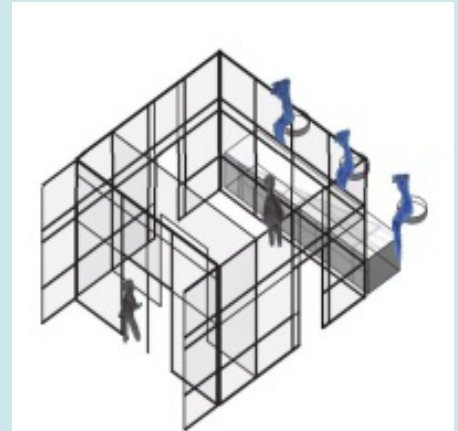


RACE AND ETHNICITY IN NORTH IRONBOUND



3<sup>rd</sup> Precinct  
249 Market Street

*Splitting Barriers*



POLICE/STAFF ENTRANCE



## Additional Projects: Site A

## Site A

## 1<sup>st</sup> Precinct

## Gridded Transparency

## Intentions

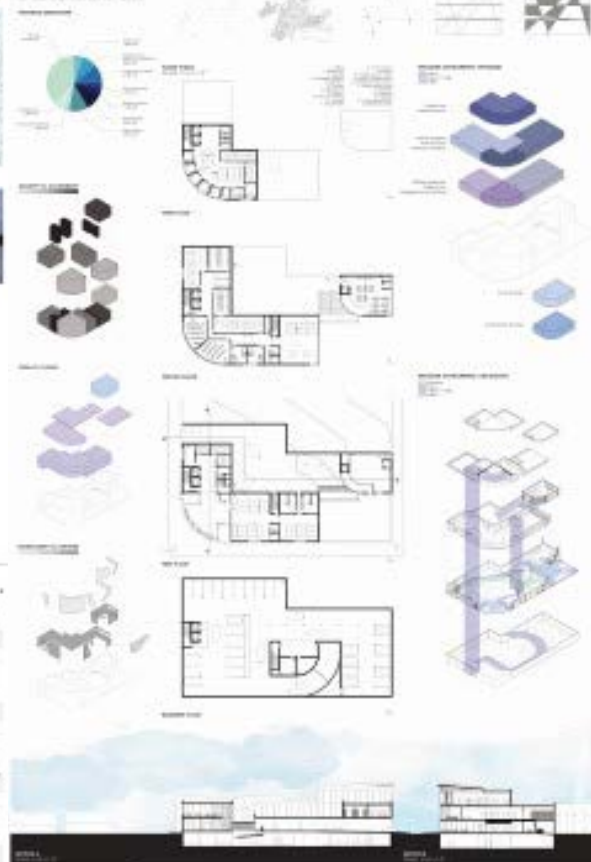
## Community Engagement

## Tutoring Center

## After School Study Center

## Design Team

Axel Herrera  
Esmay Padron



# Additional Projects: Site A



## Site A

1<sup>st</sup> Precinct

### *Adaptive Rebirth*

#### Intentions

Preserve the existing precinct structure as police museum

Defer to civic presence of the adjacent church

Layer of the precinct operations

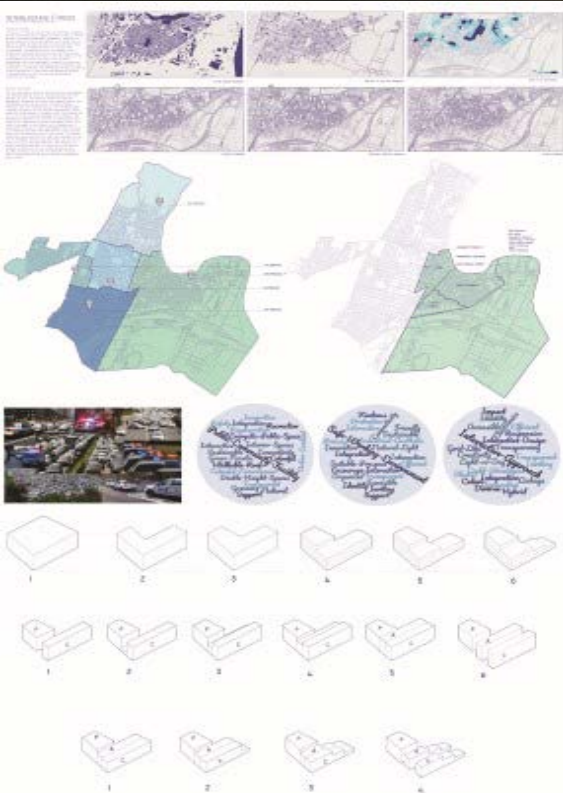
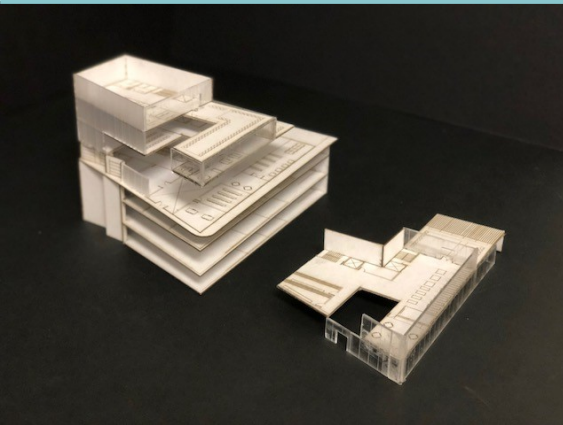
Shear/shift

#### Design Team

Brandon Neva  
David Thayer



# Additional Projects: Site B



## Site B

3<sup>rd</sup> Precinct

### *Transparent Boundaries*

Intentions

Interactive

Interlocking

Interweave

Interface

Design Team

Alexa Magliocco

Michael Salgado

# Additional Projects: Site B

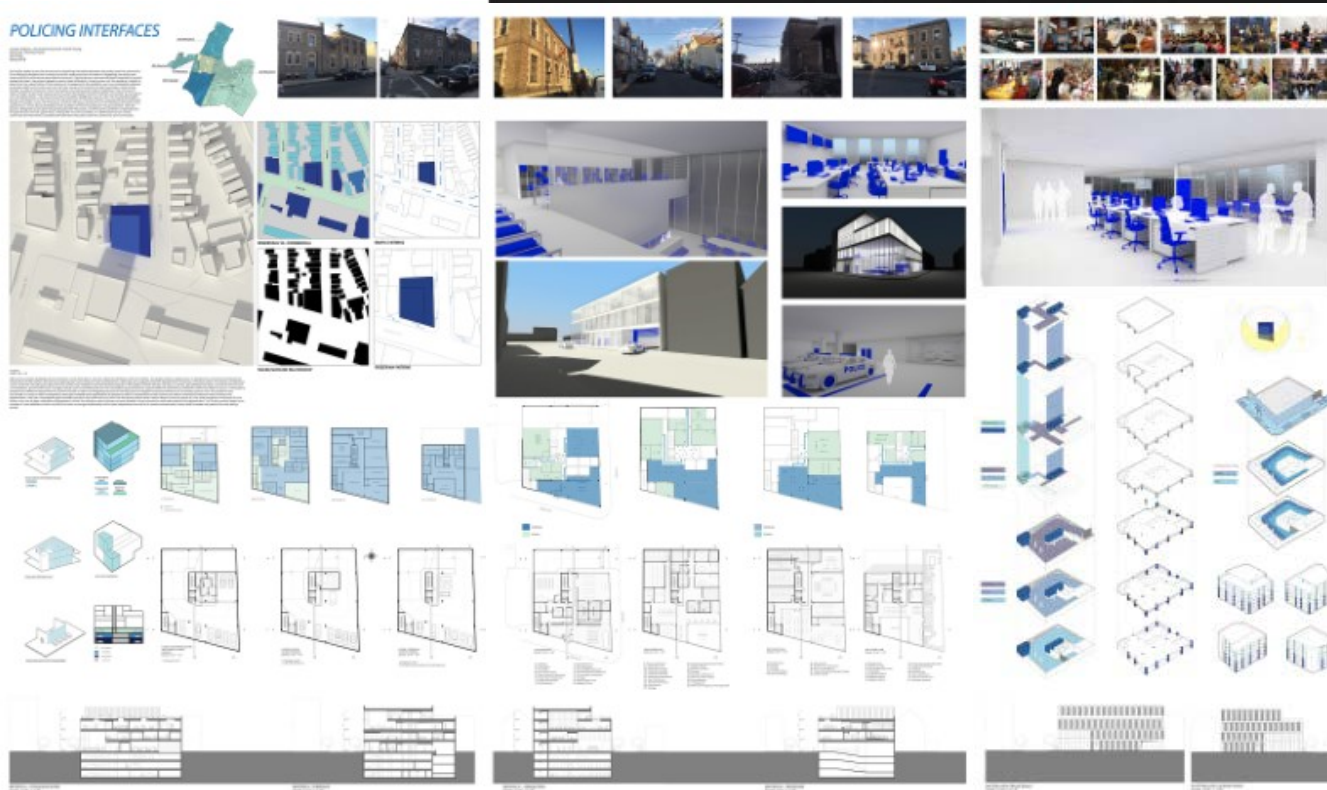
## Site B

3<sup>rd</sup> Precinct

### *Policing Interfaces*

#### Intentions

Strengthen Connections  
with Community



**Design Team:**  
Michael McDonnell  
Wan Li Zhang  
Joseph Zrebiec



# Conclusions Reached

- 1) There is an important relationship between architectural image and what a building communicates.
- 2) Create suitable environments for the police so that they can perform their duties with efficiency and with pride.
- 3) Through the spatial and experiential qualities which are inherent to architecture, a more civil environment can be achieved.
- 4) Through these inherent qualities in architecture, a greater sense of civic pride can be achieved for an institution which serves the community in order to maintain the peace while enforcing the law.

# Open Discussion

