

REIMAGINE CHALLENGE COLLABORATIVE
SUPPORT ENGAGE TREATMENT JUSTICE
AAJ CONFERENCE 2018
ADVANCING TREATMENT JUSTICE
ENLIGHTENED JUSTICE: DISRUPTING
ADVANCING TREATMENT JUSTICE
CHALLENGE COLLABORATIVE
SUPPORT ENGAGE TREATMENT JUSTICE
COLLABORATIVE COMMUNITY
DIVERSION HEALING DISRUPT
ENGAGE TREATMENT JUSTICE
TREATMENT SUPPORT JUSTICE
JERSEY CITY, NJ COMMUNITY
COLLABORATIVE NOVEMBER 14-17
JUSTICE HEALTH HEALING EFFECTIVE



The American
Institute
of Architects

ACKNOWLEDGMENTS

This conference is the result of unsurpassed teamwork. The Academy of Architecture for Justice Leadership Group—Erin Persky, Amy Finlayson, Melissa Farling, Gregory Cook, Erica Loynd—would like to extend our heartfelt gratitude to the conference planning committee.

Co-chairs

Kristine Bishop Johnson, AIA, NCARB, LEED AP

Nina Gladstone, AIA, LEED AP

Track chairs

Jeff Hyman, AIA

Larry Hlavacek, AIA, S.E.

Tom Perica, AIA, LEED AP BD+C

Jeff Purtell, Assoc. DBIA

In addition, we would like to express special thanks to Bruce Bland, Emma Tucker, Sharia Barksdale, Lindsey Mullarkey, and the entire AIA staff for their incomparable support. We are truly honored to work with such an amazing group!

Thank you all for joining us—we look forward to connecting with you!

The Academy of Architecture for Justice Leadership Group

Table of contents

Floor plan..... 4

Welcome 6

Committee & scholars 12

Schedule 18

Keynote & celebration description 27

Session descriptions 36

Tours 53

Speaker bios..... 58

Exhibitors..... 86

Sponsors..... 103

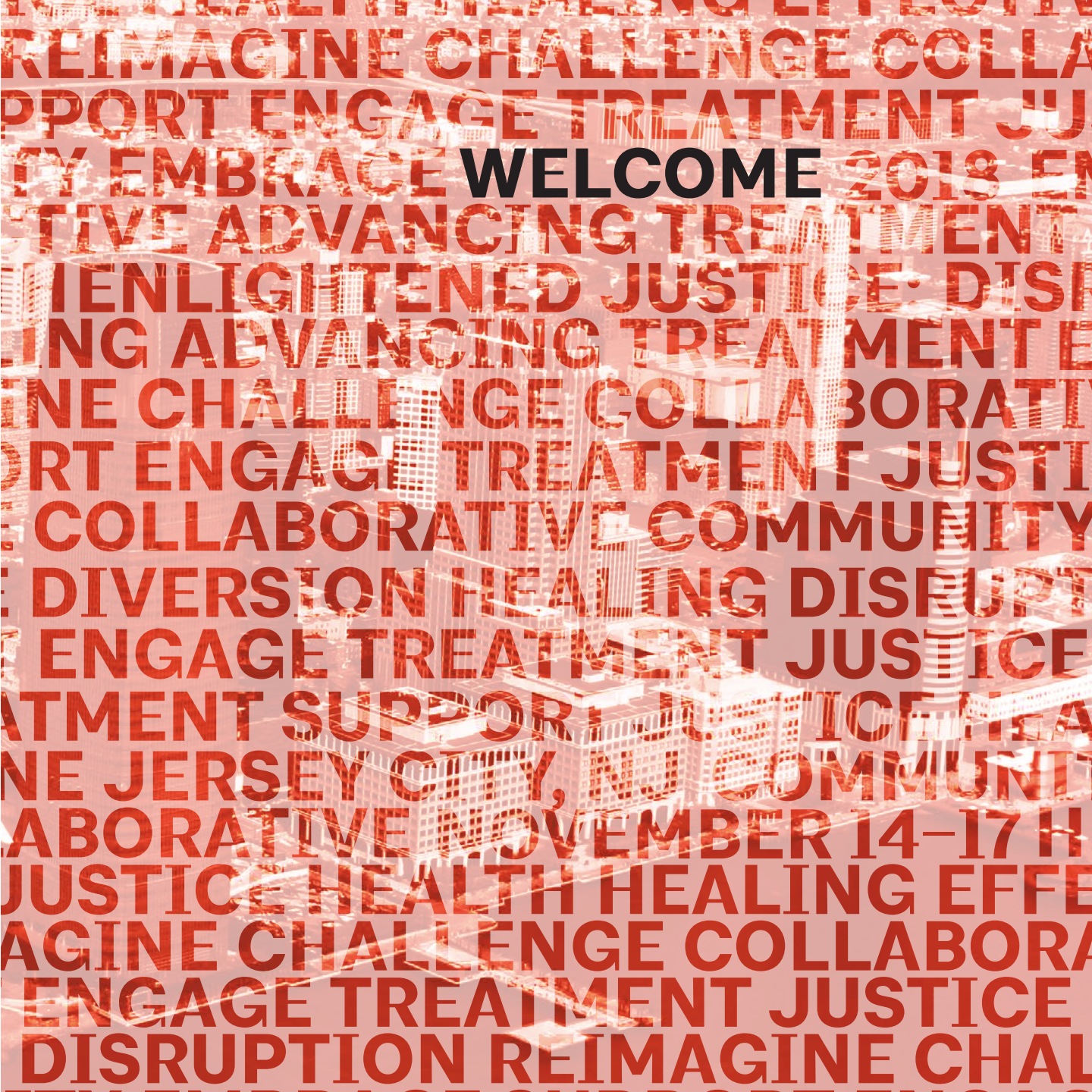
AAJ 2019 105

Map

Hyatt Regency Jersey City on the Hudson 2 Exchange Place, Jersey City, NJ 07302

THIRD FLOOR





REIMAGINE CHALLENGE COLLABORATIVE
SUPPORT ENGAGE TREATMENT JUSTICE
EMBRACE **WELCOME** 2018
ADVANCING TREATMENT JUSTICE
ENLIGHTENED JUSTICE: DISRUPT
ADVANCING TREATMENT JUSTICE
CHALLENGE COLLABORATIVE
SUPPORT ENGAGE TREATMENT JUSTICE
COLLABORATIVE COMMUNITY
DIVERSION HEALING DISRUPT
ENGAGE TREATMENT JUSTICE
TREATMENT SUPPORT JUSTICE
NE JERSEY CITY, NJ COMMUNITY
COLLABORATIVE NOVEMBER 14-17
JUSTICE HEALTH HEALING EFFECTIVE
AGINE CHALLENGE COLLABORATIVE
ENGAGE TREATMENT JUSTICE
DISRUPTION REIMAGINE CHALLENGE

Message from the Academy of Architecture for Justice Leadership Group

Welcome to Jersey City, where the culture, diversity, and commitment to collaboration and innovation are the perfect backdrop for this year's theme, Enlightened Justice; Advancing Treatment. On behalf of the Academy of Architecture for Justice Leadership Group, I would like to thank the AIA staff and the local and national volunteers who have worked diligently and passionately to create a meaningful and provocative experience for each of us. This year's event builds on the themes of our national conferences from the past several years—social justice, challenging the status quo, sharing best practices, and forging inter- and transdisciplinary collaborations. Building on last year's theme, interdisciplinary justice, we have engaged the Academy of Architecture for Health to tackle a critical issue in our justice system, mental health. However, the topic is meant to be salutogenic, stressing a proactive, holistic approach to treatment, well-being, and healthy communities. Judge Ginger Lerner-Wren will introduce the conference by discussing her experience creating the first "court of refuge" for mentally-ill defendants.

We have an opportunity to transform justice. The National Alliance on Mental Health estimates that more than 2 million arrests in the US involve

people with serious mental illnesses. The National Conference of State Legislatures acknowledges an important intersection between criminal justice and health policy is how to better handle a person with a mental illness who becomes involved in the criminal justice system. People who are experiencing a mental health crisis are more likely to encounter police than get medical help. As a result, 64% of jail inmates have a mental health problem. What can architects do to solve this problem? What is our responsibility? How do we impact policy?

Agencies and officials at many stages of the criminal justice system face the challenge of responding effectively to these needs. State legislatures are interested in how policies can achieve better results for individuals and systems. When our leadership group was considering New Jersey as a venue, we had discussions with Senator Booker's office. A strong proponent of criminal justice reform, the senator's office had never considered engaging architects in the discussion. They were incredibly surprised at our ability to help problem solve large systemic issues and that architecture can and does play a role. The past two conferences have illustrated such a role for architects, showcasing examples such as the

decommissioning of Rikers Island and the creation of healthy, rehabilitative jails that are part of the communities in which they are embedded.

We hope to consider the continuum of justice from the first interaction with law enforcement, as will be illustrated by students from New Jersey Institute of Technology, to re-entry into the community, as will be discussed by the Greenburger Center for Criminal and Social Justice. To provide all of us with greater perspective, shared best practices at the conference will not only focus on justice, but also offer a broader context of best practices in other typologies. We will also focus on what's next with a joint AAJ-AAH panel. The 2018 Academy of Architecture for Justice Conference will provide a venue for us to rethink and reassess. We hope

you are inspired by what you hear and the people you meet. Together, we can disrupt and redefine how we as architects, owners, operators, agencies, and affiliates work to build on our successes and improve the lives of those who interact with and are represented by our justice system.

Sincerely,

A handwritten signature in black ink, reading "Melissa M. Farling". The signature is fluid and cursive, with a small dot above the final 'g'.

Melissa M. Farling, FAIA, LEED AP
2018 AAJ Leadership Group Chair

Message from the 2018 Conference Planning Committee

Dear Colleagues:

Welcome to the annual conference of the Academy of Architecture for Justice Knowledge Community in Jersey City (Wall Street West)! Our conference this year builds on the momentum of previous years as we continue to challenge the status quo and discuss holistic approaches to addressing people with mental health illnesses in our justice system.

Our plenaries and panels bring together stakeholders from diverse backgrounds to discuss their experiences within the justice system and how we can learn from and apply those experiences to transform the built and social environment. We are not using the AAJ's traditional track categories of Courts, Corrections, and Law Enforcement for this conference. We have grouped panels by themes; case studies, faces of justice, and evidence based approaches, instead of traditional building typologies, as we feel this more appropriately captures the theme of Advancing Treatment. Our goal in selecting presentations was to deliver a conference that addresses mental health in our justice system through a wide lens. The track chairs will be leading sessions that align to their areas of expertise, as well as topics they are passionate about.

We will hear from many distinguished speakers over the course of the conference including our opening plenary speaker Judge Lerner-Wren who passionately advocates for diversionary strategies and decriminalizing mental illness. We have an exciting day of concurrent panel sessions scheduled for Thursday culminating in an afternoon plenary discussion lead by Khalil Cumberbatch where we will hear about his experiences with justice policy reform, as well as the re-entry support services provided by the Fortune Society. On Friday, we will collectively experience several panel discussions including sessions led by Cheryl Roberts the Executive Director of The Greenburger Center for Social and Criminal Justice, a focus on mass incarceration and how the built environment effects the detainee's experience, the future of Rikers, and a forward looking discussion between Academy of Architecture for Justice and Healthcare peers. We will travel as a group to Brooklyn to tour the Red Hook Community Justice Center and the Kings County Supreme and Family Courthouse. The Sustainable Justice workshop focusing on best practice guidelines impacting Mental Health will be held on Saturday at the Center for Architecture in Manhattan.

We welcome the New Jersey Institute of Technology faculty and students this year. In collaboration with the University Outreach team, they will be showcasing a public safety focused project on Thursday during the Case Studies session and will be available to discuss their projects in more detail later that evening in the exhibit hall. We look forward to celebrating the work of our peers during the Justice Facilities Review luncheon on Thursday.

Personally, this conference always leaves us feeling hopeful. We are uplifted by the successes of our peers through research initiatives, projects and the ability to challenge the dialogue. We hope this conference raises your awareness, challenges your thinking and compels you to take action to propose solutions and inform the path forward.

We want to thank the AIA Knowledge Community, the Leadership Group, and entire planning committee as well as the speakers, esteemed guests, sponsors, vendors, and you for making this conference possible. We hope that this conference provides a platform for you to listen, learn, engage and collaborate to re-shape society's experience and interactions with the justice system.

Sincerely,

A handwritten signature in black ink, appearing to read 'K. Johnson', with a long horizontal flourish extending to the right.

Kristine Johnson, AIA, NCARB, LEED AP
Associate Principal
Justice Market Lead, DC Metro AECOM

A handwritten signature in black ink, reading 'Nina Gladstone', in a cursive script.

Nina Gladstone, AIA, LEED AP
Associate Director
SOM



Campus Kilpatrick

Malibu, CA

Architect **DLR Group**

Photo credit **Chip Allen**



REIMAGINE CHALLENGE COLLABORATIVE
SUPPORT ENGAGE TREATMENT JUSTICE
RACE AAJ CONFERENCE 2018 ENLIGHTENED JUSTICE
ADVANCING TREATMENT JUSTICE
ENLIGHTENED JUSTICE: DISRUPTION REIMAGINE COMMUNITY
ADVANCING TREATMENT JUSTICE
CHALLENGE COLLABORATIVE
SUPPORT ENGAGE TREATMENT JUSTICE
COLLABORATIVE COMMUNITY
DIVERSION HEALING DISRUPTION
ENGAGE COMMITTEE JUSTICE
SUPPORT & SCHOLARS JUSTICE
DISRUPTION REIMAGINE COMMUNITY
COLLABORATIVE NOVEMBER 14-17 H
JUSTICE HEALTH HEALING EFFECTIVE
REIMAGINE CHALLENGE COLLABORATIVE
ENGAGE TREATMENT JUSTICE
DISRUPTION REIMAGINE CHALLENGE

Committee



MELISSA FARLING, FAIA, LEED AP

As a principal of the Gould Evans Phoenix Studio, Melissa provides leadership to the firm and within the profession, focusing primarily on the ways in which architecture impacts people. In an effort to create positive impact, much of her 30-year career has focused on justice, educational, and behavioral health facilities of all sizes. She has successfully applied research to design, resulting in measurable outcomes.

Melissa is the current chair of the AIA Academy of Architecture for Justice (AAJ) Leadership Group and is a member of the Academy of Neuroscience for Architecture Advisory Council. She also served as an AAJ Research & Technology Committee co-chair from 2006–2015, has contributed to many publications, and gives frequent presentations on evidence-based design applications.



NINA GLADSTONE, AIA, LEED AP

Nina Gladstone is an associate director and the regional practice coordinator for the civic and government practice for SOM's New York office. As a project manager with over 25 years of professional experience in the justice sector, she has successfully delivered projects from programming through construction administration services. Nina's experience includes major built projects totaling more than six million square feet. Some of her more recent projects have been recognized through national and regional awards and publications.

Nina has led several panels at the AAJ conference, focusing on her work with courthouses through the construction process. Over the last three years, her practice has focused on developing new therapeutic approaches for housing individuals with mental and physical illnesses in the correctional environment.

**KRISTINE JOHNSON, AIA, NCARB, LEED AP**

Kristine Johnson is an associate principal and the justice market lead for the DC Metro region of AECOM. With nearly 20 years of experience in the justice sector, her experience ranges from planning through construction administration of courts, detention/correction, and public safety facilities. As a judicial planner and project manager, Kristine focuses on engaging stakeholders to understand their organization's operations and maximize efficiencies. Kristine is a frequent speaker at AAJ events. She served as a Courts Track Chair at the 2012 conference in Toronto and was featured as an AAJ Emerging Professional in 2014.

2018 AAJ Emerging Professional Scholars



JACOB MATTHIAS KUMMER

Since joining the justice studio at NORR in 2016 I have dedicated most of my time to the New Toronto Courthouse project. I've played a key role in the planning of the facility and am particularly engaged in specialty court areas such as mental health, indigenous persons and youth. Through regular consultations with the users of these areas it has become apparent to me that we are building to standards that do not fit all. Additionally, the program often isn't flexible enough to support change. As the demand for specialty services increases, norms must be challenged. Facilities must be adaptable and approached with a greater sensitivity and understanding for issues we face currently and in the future.

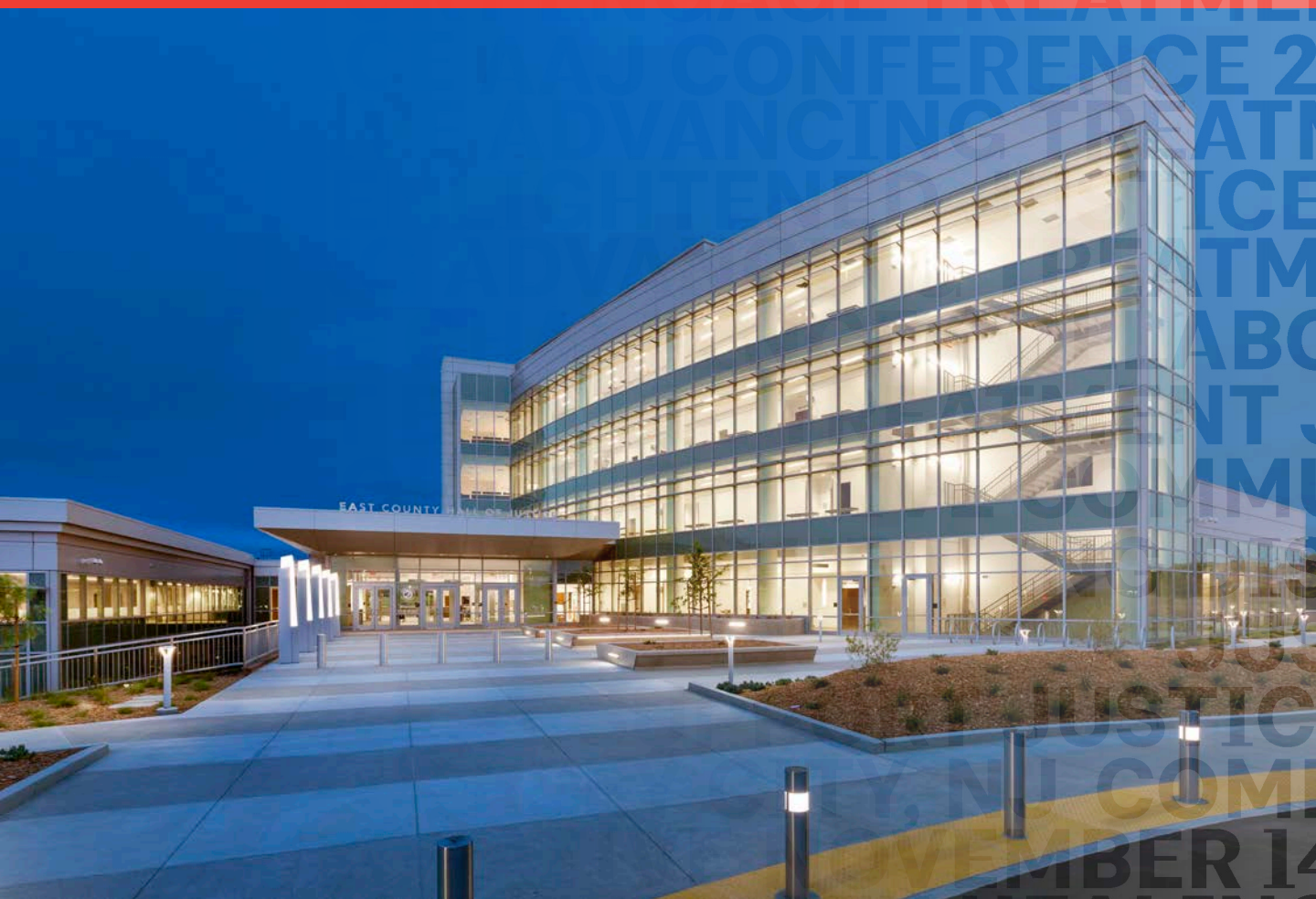
Aside from greatly benefiting my own professional development and my work at the CAAJ, I embrace opportunity to think differently, learn from leaders in the field, and be an ambassador for my fellow emerging professionals. I'm passionate about architecture's capacity to drive service innovation and believe this can be successfully achieved only through collaboration.



JOHN J CLARK AIA, NCARB

The opportunity to participate in crucial discussions that intersect my daily work in the justice sector and the country's current social, economic, and political environment is invaluable, especially from my perspective as a recently licensed Hispanic architect. Originally inspired by both traditional, railroad-era courthouse squares and contemporary public safety facilities across New Mexico, my experience with RMKM Architecture and Don H. May, FAIA has reinforced my interest in this field.

I am most enthusiastic about the opportunity to collaborate with session speakers to produce knowledge pieces, particularly as this conference emphasizes administration of justice for those with mental, behavioral, and psychiatric health issues. As a contributor to Connection, the digital publication of the Young Architects Forum, I will be able to use this work as a base for discussion and awareness among a national audience of young architects.



East County Hall of Justice

Dublin, CA

Architect **Fentress Architects**

Associated Architect **KMD Architects**

Photo credit **Michael O'Callahan**



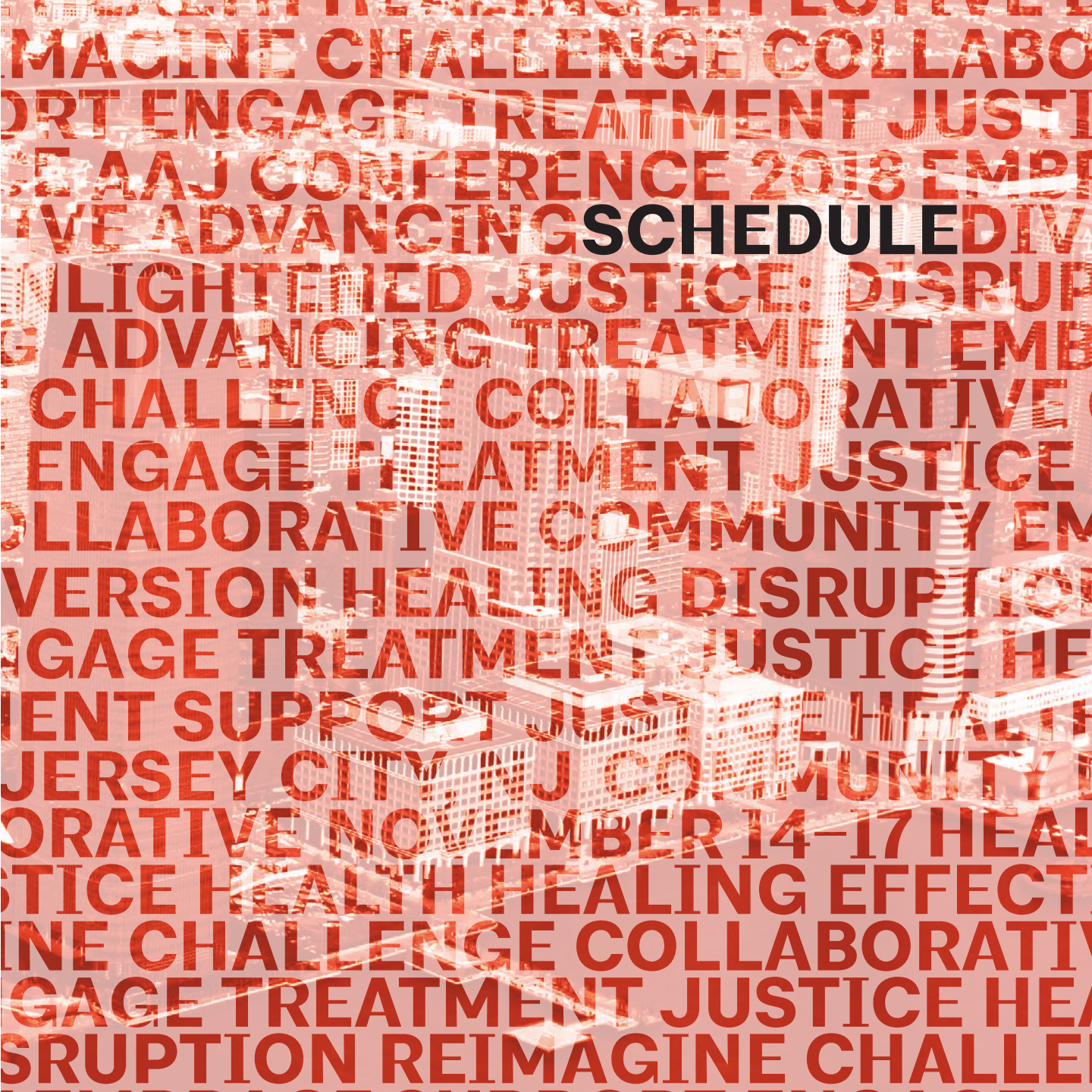
Jefferson County Courthouse

Madras, OR

Architect **DLR Group**

Associated Architect **HSR Master Planning and Architecture**

Photo credit **Josh Partee**



REIMAGINE CHALLENGE COLLABORATIVE
MAGINE CHALLENGE COLLABORATIVE
ORT ENGAGE TREATMENT JUSTICE
E AAJ CONFERENCE 2018 EMPOWER
IVE ADVANCING **SCHEDULED** DIV
ILIGHTENED JUSTICE: DISRUPT
G ADVANCING TREATMENT EMB
CHALLENGE COLLABORATIVE
ENGAGE TREATMENT JUSTICE
COLLABORATIVE COMMUNITY EM
VERSION HEALING DISRUPTION
NGAGE TREATMENT JUSTICE HE
IENT SUPPORT JUSTICE HEALING
JERSEY CITY AAJ COMMUNITY
ORATIVE NOVEMBER 14-17 HEAL
STICE HEALTH HEALING EFFECT
INE CHALLENGE COLLABORATIVE
GAGE TREATMENT JUSTICE HEA
SRUPTION REIMAGINE CHALLENGE

Wednesday, November 14

12–1pm

Harborside II

Lunch meeting for AAJ Leadership & Emerging Professionals

1:30–2:30pm

Harborside II

AAJ membership meeting

Hear formal updates on all the subcommittees. Share feedback on an initiative regarding future conference sponsorship of public and nonprofit clients.

2–7:30pm

Hudson Ballroom Prefunction

Registration open

2:45–4pm

Harborside II

AAJ Research & Technology Committee Regroup Roundtable

Speakers Jay Farbstein, FAIA, PhD, Mallory Scott Cusenbery, AIA, Melissa Farling, FAIA, LEED AP, Bob Schwartz, FAIA, Erin Persky, Assoc. AIA, CCHP, and Gregory Cook, AIA

Hear current subcommittee members report on progress from last year's roundtable and lead and moderate further discussion to move toward more immediately executable research while formulating longer team action.

4:15–5:30pm

Hudson Ballroom I, II, III

Opening Keynote

Judge Ginger Lerner-Wren

5:30–7:30pm

Hudson Ballroom IV, V, VI

Welcome reception with exhibitors

Join us for welcome reception with exhibitors and book signing of *A Court of Refuge*; *Stories from the Bench of America's First Mental Health Court* by Judge Lerner-Wren and Rebecca A. Eckland.

Thursday, November 15

7-8am

Hudson Ballroom IV, V, VI

Breakfast with exhibitors

8-9:30am

Concurrent sessions

Harborside Room

Track 1. Case Studies

The Role of Retry Programs and Diversionary Strategies in the Recovery of Mentally-Ill Offenders

Liberty Room

Track 2. Many Faces of Justice-Inclusive Processes

Applying the Equity Lens: Public to Private Sector

Palisades Room

Track 3. Evidence-Based Design Approaches

The Design of Mental & Behavioral Health Facilities

9:30-9:45am

Break

Thursday, November 15

9:45–11:15am

Concurrent sessions

Harborside Room

Track 1. Case Studies

Detention Architecture for Adult and Juvenile Mental Health in California
Case Studies

Liberty Room

Track 2. Many Faces of Justice-Inclusive Processes

Officer & Inmate Wellness with Post Occupancy Data

Palisades Room

Track 3. Evidence-Based Design Approaches

Mentally-Ill Offenders: Who is My “Keeper”

11:15–11:45am

Lunch

Hudson Ballroom I, II, III

11:45am–12:45pm

2018 Justice Facility Review Celebration Lunch

Hudson Ballroom I, II, III

12:45–1pm

Break

1–2:30pm

Concurrent sessions

Harborside Room

Track 1. Case Studies

Shrinking Corrections

Liberty Room

Track 2. Many Faces of Justice-Inclusive Processes

Shaping Tribal Well-Being

Palisades Room

Track 3. Evidence-Based Design Approaches

Thin Blue Line: Mental Health & Mental Illness

2:30-3:15pm

Afternoon break with exhibitors

Hudson Ballroom IV, V, VI

3:15-4:45pm

Concurrent sessions

Harborside Room

Track 1. Case Studies

NJIT Studio: Two Newark Precincts Critical Analysis

Liberty Room

Track 2. Many Faces of Justice-Inclusive Processes

One Commonwealth: Two Approaches to Designing for Youth

Palisades Room

Track 3. Evidence-Based Design Approaches

Reducing Trauma/ Meeting Needs: Environments that Restore Health

4:45-5pm

Break

5-6:30pm

The Fortune Society: Those Closest to the Problem Are Closest to the Solution

Hudson Ballroom I, II, III

6:30-7:30pm

Reception with exhibitors

Hudson Ballroom IV, V, VI

Friday, November 16

7:30–8:30am

Hudson Ballroom I, II, III

Breakfast Keynote: Cheryl Roberts

8:45–9:45am

Hudson Ballroom I, II, III

Mass Incarceration & the Built Environment: The Complex Role of Architects in Prison Reform

10–11am

Hudson Ballroom I, II, III

Justice in Design: Program Principles for Future Jails & Detention Centers in New York City

11:15am–12:15pm

Hudson Ballroom I, II, III

The Mental Health Crisis—Let's Talk

12:30–1:15pm

Hudson Ballroom Prefunction

Lunch

1:15–2:15pm

Lobby porte-cochere

Tour departure

2:15–4:15pm

Concurrent tours

The Red Hook Community Justice Center

The Kings County Supreme & Family Courthouse

4:15–5pm

Travel back to hotel

Saturday, November 17

9am-12:30pm

Offsite location:

Center for Architecture,
536 LaGuardia Place,
New York, NY 10012

Leveraging Programming & Design Tools to Positively Impact Mental Health



Litchfield Judicial District Courthouse
Torrington, CT

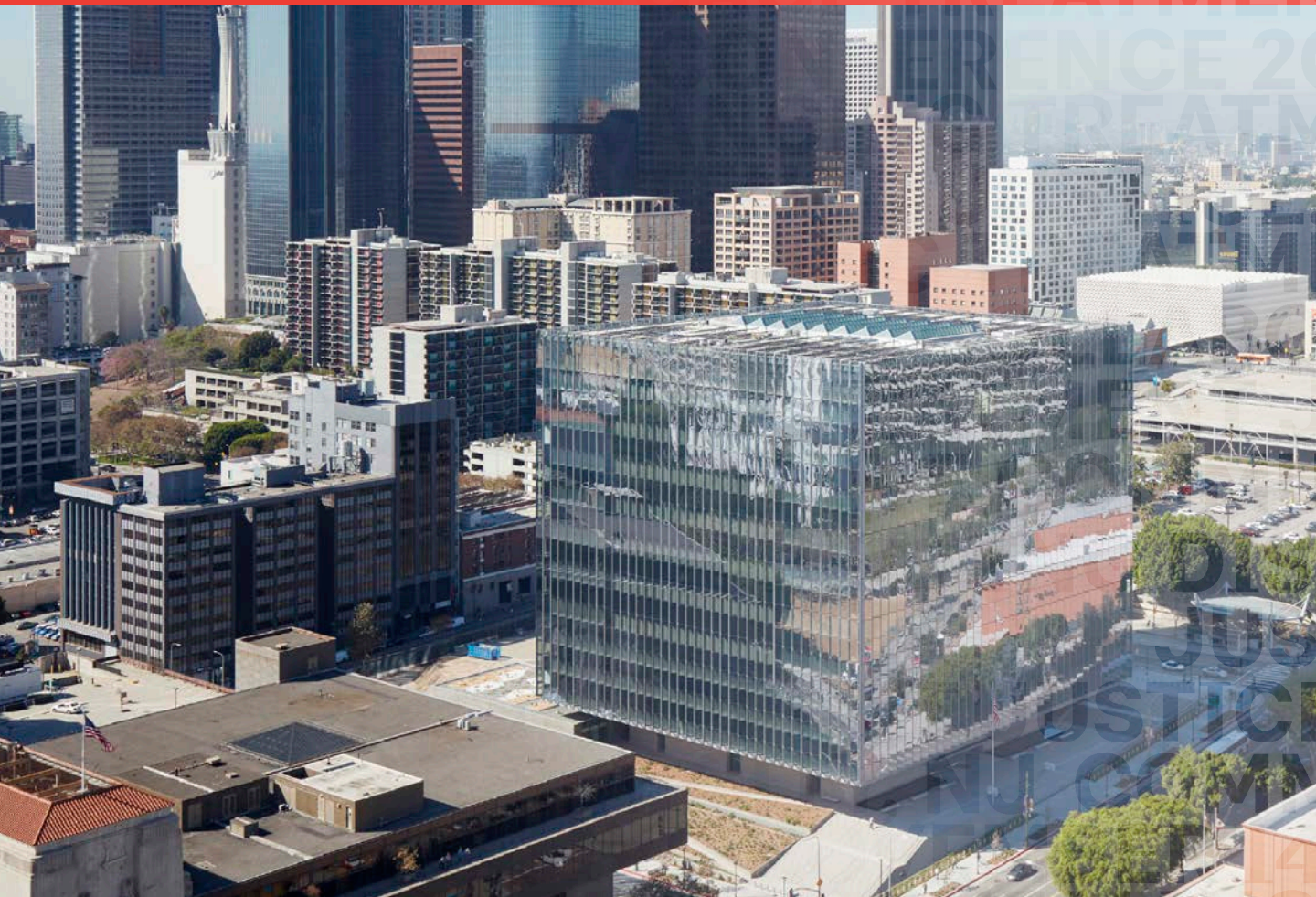
Architect **DLR Group**

Associated Architect **AM Design**

Photo credit **Paul Burk Photography**



REIMAGINE CHALLENGE COLLABORATIVE
SUPPORT ENGAGE TREATMENT JUSTICE
RACE AAJ CONFERENCE 2018 ENLIGHTENED JUSTICE
ADVANCING TREATMENT JUSTICE
ENLIGHTENED JUSTICE: DISRUPTING ADVANCING TREATMENT
CHALLENGE COLLABORATIVE
SUPPORT ENGAGE TREATMENT JUSTICE
COLLABORATIVE COMMUNITY
DIVERSION HEALING DISRUPT
ENGAGE TREATMENT JUSTICE
KEYNOTES & SUPPORT
CELEBRATION COMMUNITY
LABORATIVE NOVEMBER 14-17
JUSTICE HEALTH HEALING EFFECT
AGINE CHALLENGE COLLABORATIVE
ENGAGE TREATMENT JUSTICE
DISRUPTION REIMAGINE CHALLENGE



New United States Courthouse - Los Angeles

Los Angeles, CA

Architect **Skidmore, Owings & Merrill LLP**

Photo credit **Bruce Damonte**

Wednesday, November 14

Opening Keynote: Judge Ginger Lerner-Wren | 4:15-5:30pm

SPEAKER Judge Ginger Lerner-Wren

DESCRIPTION

Within months of taking the bench, Judge Lerner-Wren was appointed by Chief Judge Dale Ross to administer and preside over the nation's first Mental Health Court. Judge Lerner-Wren is responsible for leading and coordinating this specialized criminal, problem-solving, diversionary court to address the complexities of mentally-ill offenders arrested on nonviolent misdemeanor offenses and to improve the administration of justice for those with serious mental health and psychiatric disorders.

LEARNING OBJECTIVES

1. Learn how Judge Lerner-Wren administered a new program to include social, housing, and economic matters by evaluating levels of care for the clients.
2. Learn how Judge Lerner-Wren was responsible for the oversight of treatment plans and worked collaboratively with community based senior mental health, related social service agencies, and a wide array of long term care facilities.
3. Learn how the first dedicated mental health court in the United States grew from an offshoot of Judge Lerner-Wren's criminal division more than 20 years ago.
4. Learn how the court defines itself as a human-rights strategy, prioritizing dignity and restorative justice goals, and seeks to divert mentally ill persons charged with misdemeanor and nonviolent offenses into community-based treatment as an alternative to incarceration.

Thursday, November 15

2018 Justice Facility Review Celebration Lunch | 11:45am–12:45pm

SPEAKERS Mallory Scott Cusenbery, AIA, Charlie Wend, Julian Jaffary, Intl. Assoc. AIA, and Michael Cox, AIA

DESCRIPTION

The annual Justice Facilities Review awards presentation provides a unique opportunity for attendees to see a range of recent projects from around the country, explore their design approaches, and learn from outstanding examples of justice facility design.

LEARNING OBJECTIVES

1. Learn emerging trends in justice facility design.
2. Review a range of recent justice projects in the courthouse project typology.
3. Review the increasing focus on sustainability in justice solutions.
4. Discuss how each project embraces the process holistically—design and execution as well as the long-term implications.

The Fortune Society: Those Closest to the Problem are Closest to the Solution | 5-6:30pm

SPEAKERS Khalil A. Cumberbatch, Seán Martín Dalpiaz, Stacey Saunders, and Tamika Graham

DESCRIPTION

The story of The Fortune Society begins with a play. In 1966, Fortune founder David Rothenberg read the script for *Fortune and Men's Eyes* by playwright John Herbert. Deeply moved by the author's depiction of his own traumatic prison experience, David endeavored to take the play Off-Broadway, where it premiered the following year. After each show, the cast held a talkback session to engage the audience in the real-world issues reflected on stage. David realized, however, that one play wouldn't be enough to remedy just how little the public knew about the criminal justice system. Thus, in 1967, The Fortune Society was born. Now, with 50 years of experience under its belt, The Fortune Society has become one of the nation's leading re-entry service organizations, serving nearly 7,000 individuals annually. It is also a leading advocate in the fight for criminal justice reform and alternatives to incarceration. Fortune's program models are recognized both nationally and internationally for their quality and innovation, and it continues to inspire and transform a multitude of lives.

LEARNING OBJECTIVES

1. Participants will learn about different perspectives/approaches to service delivery for people with mental health and housing needs
2. Participants will hear examples of how to empower and learn from people with lived experience in and out of the justice systems
3. Participants will learn how to incorporate gender-specific lens in the design/development of architecture, building structure, etc.
4. Panelists will share both their personal and professional experiences with the juvenile and adult criminal legal systems while offering practical solutions to service delivery for people with mental health and housing needs.

Friday, November 16

Breakfast Keynote: Cheryl Roberts | 7:30–8:30am

SPEAKERS Cheryl Roberts, and Cindy Harden

DESCRIPTION

Cheryl Roberts is the Executive Director of The Greenburger Center for Social and Criminal Justice in New York who advocates for criminal justice reform. She will be joined by Cindy Harden, architect for Hope House. Anticipated to open in 2020, Hope House will offer up to 2 years of treatment, life skills, programming and job training in a secure, therapeutic residential facility as an alternative to incarceration for men and women with serious mental illness accused of certain felony level crimes.

LEARNING OBJECTIVES

1. Participants will learn how reliance on incarceration impacts families, communities and the economic wellbeing of our local, state and national economies.
2. Discuss treatment options that maintain connections to the community.
3. Review a case study for an alternative to incarceration.
4. Provide an example for how architects can partner with non-profit organizations to drive positive change.

Mass Incarceration & the Built Environment: The Complex Role of Architects in Prison Reform | 8:45–9:45am

SPEAKERS David Cloud, and Michael Murphy**DESCRIPTION**

No other industrialized democracy has a criminal justice system that is as expansive and punitive as the US. Mass incarceration is the result of social, political, economic, and cultural forces, with deep roots in the legacies of slavery, labor exploitation, and race and class discrimination, which is evident in the stark racial disparities that exist at every turn along the criminal justice system.

LEARNING OBJECTIVES

1. Briefly summarize the history, magnitude, and consequences of mass incarceration in the United States as a pressing human rights, civil rights, and public health crisis.
2. Compare architectural and design features of correctional facilities in the U.S. versus other industrialized democracies.
3. Discuss the complex role and ethical quandaries for architects in prison reform.
4. Provide examples for how architects can partner with non-profit organizations to drive positive change.

Justice in Design: Program Principles for Future Jails & Detention Centers in New York City | 10-11am

SPEAKERS Dan Gallagher, AIA, NADAAA, and Jessica Lax

DESCRIPTION

This talk will present the history, structure, process, and outcomes of Justice in Design, a study that focused on creating a set of design principles for future jails and detention centers in New York City. Led by the Van Alen Institute and NADAAA, the report was part of the Lippman Commission work, which set the foundation for the City of New York to move decisively toward closing Rikers Island, the long-neglected, isolated, harsh jail complex. It also addressed the nature of urban buildings and how the next generation of jails and detention centers could be civic assets to people and communities both within and outside the facilities.

LEARNING OBJECTIVES

1. Participants will learn how Van Alen Institute collaborates with communities, scholars, policymakers, and professionals on local and global initiatives that rigorously investigate the most pressing social, cultural, and ecological challenges of tomorrow.
2. Understand the implications of jail and detention design in a healthy urban environment.
3. Review the circumstances which led to the move to close Rikers Island.
4. Share outcomes of the Justice in Design study and how to create jails that are more healthy, rehabilitative, and respectful to the incarcerated and the communities that interact with them.

The Mental Health Crisis—Let’s Talk | 11:15am–12:15pm

MODERATOR Beverly Prior, FAIA, LEED AP

PANELISTS Francis Murdock Pitts, FAIA, Eric Lautzenheiser, AIA, ACHA, Erin Persky, Assoc. AIA, CCHP, and Jay Farbstein, FAIA, PhD

DESCRIPTION

Leaders in architecture and planning who specialize in justice and healthcare will discuss the big questions they grapple with around mental and behavioral health, including best practices in supporting patient health, staff resiliency, and the interaction of biochemistry and environment. What is the path forward to better collaborate toward healthy outcomes?

LEARNING OBJECTIVES

1. Understand the value of engagement with AIA Knowledge Communities.
2. Learn from Justice and Health Care Architects the big questions they are confronting in their profession.
3. Engage about best practices in supporting patient health and staff resiliency.
4. Identify opportunities for collaboration between Justice and Health Care Architects.



Skagit County Community Justice Center

Mount Vernon, WA

Architect **DLR Group**

Photo credit **Sam Van Fleet Photography**



REIMAGINE CHALLENGE COLLABORATIVE
SUPPORT ENGAGE TREATMENT JUSTICE
RACE AAJ CONFERENCE 2018 ENLIGHTENED JUSTICE: DISRUPTING ADVANCING TREATMENT
ENLIGHTENED JUSTICE: DISRUPTING ADVANCING TREATMENT
REIMAGINE CHALLENGE COLLABORATIVE
SUPPORT ENGAGE TREATMENT JUSTICE
COLLABORATIVE COMMUNITY
SESSION HEALING DISRUPTION
ENGAGE DESCRIPTIONS AT MEN
TREATMENT SUPPORT JUSTICE HEALING
NE JERSEY CITY, NJ COMMUNITY
COLLABORATIVE NOVEMBER 14-17 HEALING
JUSTICE HEALTH HEALING EFFECTIVE
REIMAGINE CHALLENGE COLLABORATIVE
ENGAGE TREATMENT JUSTICE
DISRUPTION REIMAGINE CHALLENGE

Thursday, November 15

The Role of Re-Entry Programs & Diversionary Strategies in the Recovery | 8–9:30am

SPEAKERS John Eisenlau, AIA, Jeff Lane, AIA, Andy Pitts, AIA, Charles Sterling, Wes Houk, Amy Galyon, and Kymberli Barrett

DESCRIPTION

Evidence-based program and facility design helps counties respond to a new mental health delivery platform. In most states, mental health treatment in a detention environment is changing to a more evidence-based model, yet many counties are still challenged to deliver access to services or medications needed within facilities that are not designed for that purpose. Some states are moving away from housing the mentally ill to transitioning the inmates back into the community. We will discuss how those changes have occurred and address how counties implementing new programs and services to address mental health treatment face a greater need to change how their buildings are working. Examples of success—based on real TreanorHL projects—include transition centers, crisis intervention centers, community outpatient services, intensive inpatient services, and step-down programs for short-term stabilization followed by outplacement.

LEARNING OBJECTIVES

1. Articulate why a community may decide to start implementing re-entry programs and diversionary strategies.
2. Describe re-entry programs and diversionary strategies as models and the state of research on program outcomes.
3. Identify program models other than re-entry and diversionary that have been shown to improve outcomes for individuals with mental illnesses involved in the criminal justice system.
4. Identify local and state level stakeholders who should help plan your re-entry and diversionary strategies.

Applying The Equity Lens: Public to Private Sector | 8-9:30am

SPEAKERS Michael Austin, AICP, LEED AP-ND, Rebecca Holt, LEED AP BD+C, ND, Ingrid Stromberg, LEED GA, Kathy Nyland, Tim Wolfe, and Kristen Hall, AICP, LEED AP-ND

DESCRIPTION

Historically, underserved and underrepresented communities are disproportionately impacted by urban afflictions (air, sound, and water pollution) and disproportionately precluded from accessing urban amenities such as public transportation and open space that are essential to our physical and mental health. These same communities are often excluded from standard public processes that otherwise provide a platform to advocate for change. Feeling safe and included in public spaces (such as civic centers, courts, campuses etc) and public process is an essential component of livability and mental health. This workshop will examine how Perkins+Will collaborated with equity experts from the City of Seattle to adopt their municipal social equity toolkit for use in both planning and design. The toolkit embodies a process that can enhance and strengthen more specific design tools such as the Academy of Architecture for Justice Sustainable Justice Guidelines.

LEARNING OBJECTIVES

1. Understand baseline information around definitions and existing structural inequities including race and exclusionary/inclusionary practices.
2. Understand the equity toolkit process as one means of advancing opportunity within a project and how it relates to the AAJ Sustainable Justice Guidelines.
3. Learn to apply a multifaceted and scaled approach to building momentum to your own practice.
4. Learn how an inclusive outreach and engagement strategy can benefit their work.

The Design of Mental & Behavioral Health Facilities | 8-9:30am

SPEAKERS Mardelle McCuskey Shepley, FAIA, FACHA, LEED AP, and Naomi A. Sachs, PhD

DESCRIPTION

Very little research is available on the design of mental and behavioral health facilities. Research on this topic would be particularly useful in behavior health components of justice facilities. This session will explore recent research on the impact the physical environment has on staff, patients, and families in psychiatric environments. Design guidelines and research results on topics including deinstitutionalization, access to nature, and nursing stations will be shared.

LEARNING OBJECTIVES

1. Review the most current behavioral health research.
2. Understand the most effective methods for collecting data.
3. Discuss gaps in research specific to justice facilities.
4. Compare and discuss relevant guidelines and research results for application to design of justice facilities.

Detention Architecture for Adult and Juvenile Mental Health in California Case Studies | 9:45-11:15am

SPEAKERS Rona Rothenberg, FAIA, Gary Retel, AIA, Bruce Overson, Kenneth J. Harms, and Carol Lanham, AIA

DESCRIPTION

The California Legislature found that the current challenges in managing jail populations require improved housing, with an emphasis on expanded program and treatment space as an investment in public safety. Senate Bill 863 was passed in 2015 to support this effort with available financing for State projects. Under this bill, Alameda County has qualified for a \$54 Million conditional award from the Board of State and Community Corrections for the construction of a critically needed Health Program and Services Unit at its 750,000 sf Santa Rita Jail in Dublin, California. The Alameda County Sheriff's office is the largest provider of mental health services in the County. The proposed 38,000 infill building will provide critically needed health care program and mental health services space for men and women to provide improved and safe service in the large 1983 existing jail.

LEARNING OBJECTIVES

1. Assess of code and functional issues in existing jails in planning for improved services and building projects.
2. Understand State of California structural and life safety requirements for justice facilities as a condition of long-term program-building use.
3. Apply principles of design excellence to secure justice facilities design-what is possible.
4. Explore improvements in building security for humane services and mental health treatment.

Officer & Inmate Wellness with Post Occupancy Data | 9:45–11:15am

SPEAKERS Erica Loynd, AIA, Charles Wend, and Sabrina Ames

DESCRIPTION

The facility is built on the central goal to improve inmate rehabilitation and officer wellness shaped by an impassioned discussion about the amount of time a corrections officer spends inside the jail during his or her career. A 25-year officer spends 56,250 hours or six years of his or her life in the facility by the time they retire, in most cases more time than any inmate who passes through. These guiding discussions drove the design goals to include inmate rehabilitation rather than incarceration, design for an enhanced officer and employee wellness experience, and view the building as an asset to the community rather than a liability. As a replacement to the old facility, the team tested buildings that gauged qualities such as air quality, temperature, acoustics, etc. in both the existing and new facility. We will share the direct impact these features have on officer and inmate health.

LEARNING OBJECTIVES

1. Understand concepts of inmate and officer wellness based on the built environment around them.
2. Review strategies of sustainability and wellness in the Skagit County Community Justice Center.
3. Review post occupancy survey information and processes used to gain information from existing and new facilities.
4. Compare statistics on how the built environment can affect people, especially with mental health, in the facilities.

Mentally Ill Offenders: Who is my “Keeper” | 9:45-11:15am

SPEAKERS Laura Maiello-Reidy, Brett Firfer, Assoc. AIA, Elizabeth Ford, PhD, Kevin Murrett, AIA, and Richard Wener, PhD

DESCRIPTION

The population of inmates with mental health diagnoses increasing in both size and acuity is described as the number one challenge facing corrections today. Solutions require a comprehensive, transdisciplinary approach that diverts mentally-ill people from jail, coordinates appropriate treatment, and provides the right physical environment for those who require a secure setting.

A roundtable of multidisciplinary experts representing diverse perspectives will explore meaningful approaches for meeting these objectives across the criminal justice continuum—and how these goals and expectations are shaping policy, practice, and design.

LEARNING OBJECTIVES

1. Educate the audience on the extent of mental health in the justice system based on national research and trends.
2. Understand the debilitating impact the traditional correctional environment has on the wellbeing of inmates with mental health diagnoses.
3. Discuss comprehensive, transdisciplinary approaches for better serving mentally-ill offenders across the continuum including law enforcement, courts, corrections, and mental health.
4. Demonstrate design characteristics that provide a healthier, more positive environment for inmates with mental health challenges.

Shrinking Corrections | 1-2:30pm

SPEAKERS Karl Becker, Robert Fisch, AICP, LEED AP, Commisioner Blanche Carney, and Andie Moss

DESCRIPTION

Due to changing crime trends, focus on treatment, and newfound convergence of political opinions, many jurisdictions are actively reducing their inmate populations. New York City plans to vacate Rikers Island and also reduce its inmate population by almost half. Similarly, Philadelphia is sharply reducing its populations. Both cities are undertaking physical master plans to reimagine their facilities to meet their changing needs. Several States are reducing prison populations as well including Texas, Alabama, California, Colorado, and New York.

The impacts of these initiatives on jail and prison design are significant. As jurisdictions divert their low-risk populations, facilities are left to manage a population of more high-risk and special needs offenders, including the mentally ill. There's also a greater focus on diverting lower risk mental health populations to alternative sanctions and treatment. While their populations are shrinking, many jurisdictions are looking to replace outmoded facilities with smaller, yet more therapeutic environments.

LEARNING OBJECTIVES

1. Learn about changing incarceration trends around the US.
2. Understand how a focus on mental health and special needs populations will impact jail and prison planning.
3. Learn about the master planning process currently underway by several major city and state jurisdictions.
4. Engage in a dialogue, maybe even a debate, on what shrinking corrections means to the future of incarceration.

Shaping Tribal Well-being | 1-2:30pm

SPEAKERS Kierstin Anderson, Krista Shepherd, AIA, NCARB, LEED AP, NCIDQ, Aaron Herring, NCARB, LEED AP, Judge Darayne Achin, and Jeff Harmon

DESCRIPTION

During this presentation and panel discussion, tribal members and judicial staff will retell the making of the Salt River Pima-Maricopa Justice Center. It is a story about the formalization of tribal procedure and the disappearance of western justice formalism. The Salt River Pima-Maricopa Indian community has long practiced mending holes in the Community created by acts of injustice, and new laws have defined greater tribal sovereignty. Yet, as tribal autonomy leads to imposing stricter penalties, a judicial desire to present the court procedures more formally prevails. Spatial clarity instills confidence in consistent methods of administering Justice and design is paramount to merge local material details to avoid placelessness, sterility, or inauthenticity. Equally important is improving individual and community well-being. The balance between the formal and informal drives the concepts for the project. Creating and operating the Justice Center becomes a meditation on the tribe's unique and evolving definition of dignified justice.

LEARNING OBJECTIVES

1. Session will cover how to test restorative principles for administering justice.
2. Participants will learn how to study formal effects that reinforce security, authority, confidentiality, and validate procedures.
3. Panelists will dissect spatial and operational characteristics that improve emotional support and refuge.
4. Panelists will review the process of how to evaluate the effects

Thin Blue Line: Mental Health & Mental Illness | 1-2:30pm

SPEAKERS Brian Meade, AIA, Rod Williams, AIA, CPD, and Joseph Ford

DESCRIPTION

The first part of this session will examine the “thin blue line” through the lens of mental health and mental illness as it affects community members and the law enforcement officers that serve them. CIT, mental health training programs, and community outreach programs will be reviewed to inform new ideas and concepts that may suggest collocating some of these services within public safety facilities as extensions of community policing through expanded community rooms and outreach program offices. The second part will cover Dewberry’s first net zero energy law enforcement project as a case study highlighting the Zero Energy Building (ZEB) Certification process used and lessons learned.

LEARNING OBJECTIVES

1. Learn about the latest CIT/mental health emergency response training programs, including the new pilot SIMLAB course.
2. Discover Community Outreach Programs on mental health services and new ideas about collocating these services within police stations.
3. Discover methods to program and design environments that can help staff recover from emotional exhaustion.
4. Learn about Zero Energy Building (ZEB).

NJIT Studio: Two Newark Precincts Critical Analysis | 3:15-4:45pm

SPEAKERS Steven Loomis, FAIA, Thomas Navin, AIA, ASLA, Nick Seierup, FAIA, Juventino Flores, Michael Zampolin, Jason Carvalho, Adiel Quiteno, and Amanda Chebalo, AIA

DESCRIPTION

Our social and political climate includes increased apprehensions about national security set amidst aggravated racial tensions within certain communities. As a result, our law enforcement agencies and the police who serve within them are under greater scrutiny. This presentation is a culmination of the NJIT Studio that explored police stations as a building type central to the civic realm of our society. Student project presentations will focus on their exploration of the symbolic role that architecture can play. The projects propose a physical presence to heighten awareness of the police precinct and solicit civic pride in an institution that operates to ensure a more humane and civil society, maintaining the peace and enforcing the laws of our nation and community.

LEARNING OBJECTIVES

1. Understand Police Facilities in the community context and complexity of the social/economic/political conditions.
2. Understand the interfaces between the community and police within the facility, considering different solutions for access, separation, transparency, and security.
3. Explore the complex situations that have recently brought greater attention to the role police play.
4. Learn the programmatic requirements to facilitate community engagement and delivery of safe and effective police services for precincts.

One Commonwealth: Two Approaches to Designing for Youth | 3:15–4:45pm

SPEAKERS Stephen Carter, Assoc. AIA, Gregory Cook, AIA, Robert Boraks, and Mark Ryan, AIA

DESCRIPTION

Both Ontario Province in Canada and Victoria State in Australia are involved in the design of new youth facilities. Both jurisdictions have used international benchmarks to establish the design principles. A panel that includes planners and designers from both jurisdictions will explore the similarities and differences that have emerged during the process. Since all three panelists are familiar with American juvenile facility design, the panel will also include a discussion of potential applications in America.

LEARNING OBJECTIVES

1. Demonstrate the ways that international best practice guideline for youth corrections influences design solutions.
2. Demonstrate why and how a well-conceived vision statement changed the client's perspective.
3. Demonstrate how a belief that environment impacts youth behavior drove design solutions.
4. Demonstrate how sharing international design solutions will improve outcomes in American youth facilities.

Reducing Trauma/Meeting Needs: Environments that Restore Health | 3:15-4:45pm

SPEAKERS Frank Greene, FAIA, Ruth O'Sullivan, Lauren D'Isselt, Elizabeth Ford, PhD, and Amie Gross, AIA

DESCRIPTION

There is a continuum of services and environments, from initial contact to permanent community-based housing, where dedicated service providers can make a positive difference. This panel brings together representatives from specialized mental health courts, services providers within detention facilities, providers of services and housing that facilitate successful re-entry, and an architect who designs for permanent supportive housing to demonstrate how the structure of the justice system can be supplemented by alternative processes to benefit the mentally ill. The process is holistic, just and effective.

LEARNING OBJECTIVES

1. Understand the needs of mentally-ill people in crisis and how environments can affect the degree of trauma experienced.
2. Demonstrate how police, health professionals, judges and staff, and former offender service providers can combine their efforts.
3. View successful examples of systemic approaches to the care of the mentally ill in contact with the justice system.
4. Learn the principles that inform the design of environments for the mentally ill in contact with the justice system.

Saturday, November 17, 9am–12:30pm

Leveraging Programming & Design Tools to Positively Impact Mental Health | 9am–12:30pm

SPEAKER Brooke Martin, AIA

LOCATION Center for Architecture, 536 LaGuardia Place, New York, NY 10012

DIRECTIONS PATH to World Trade Center–transfer to E Line towards uptown. Exit West 4 St–Washington Sq Station. Walk .3 miles to AIA New York | Center for Architecture

DESCRIPTION

This workshop showcases multiple best practice guidelines impacting mental health including current research, WELL Certified buildings, AAJ Sustainable Justice Guidelines, and lessons–learned through courts, law enforcement, and corrections case studies of building programming and built facilities.

Attendees will:

- Review how programming and design tools can be leveraged to best support mental health populations.
- Examine how available practitioner tools effectively support the planning, programming, and design of “mentally healthy” buildings.
- Discuss perspectives of the AAJ community, owners, and users of justice facilities.
- Discuss ways to improve and advance access to and utility of these tools.

This interactive workshop will also include small group discussions focusing on courts, law enforcement, and corrections, and the outcomes will be published in the next AAJ Journal.

LEARNING OBJECTIVES

1. Discover how sustainable planning and design practices are related and support healthy mentally healthy environments.
2. Identify relevant building systems and how the built environment impacts the mental health of staff and patients.
3. Create a building program geared toward mental health populations in courts, law enforcement, and corrections.
4. Learn how to apply AAJ Sustainable Justice Guidelines during design.



State Emergency Operations Center - Pennsylvania Emergency Management Agency
Harrisburg, PA

Architect **SCHRADERGROUP architecture LLC**

Associated Architect **AECOM**

Photo credit **Matt Wargo**



Superior Court of California, County of Yolo
Woodland, CA

Architect **Fentress Architects**
Associated Architect **Dreyfuss + Blackford**
Photo credit **Rien van Rijthoven**



REIMAGINE CHALLENGE COLLABORATIVE
SUPPORT ENGAGE TREATMENT JUSTICE
RACE AAJ CONFERENCE 2018 EN
TIVE ADVANCING TREATMENT
ENLIGHTENED JUSTICE DISRUPT
ING ADVANCING TREATMENT
CHALLENGE TOURS COLLABORATIVE
SUPPORT ENGAGE TREATMENT JUSTICE
COLLABORATIVE COMMUNITY
DIVERSION HEALING DISRUPT
ENGAGE TREATMENT JUSTICE
TREATMENT SUPPORT JUSTICE HEALING
NE JERSEY CITY, NJ COMMUNITY
COLLABORATIVE NOVEMBER 14-17 H
JUSTICE HEALTH HEALING EFFECTIVE
AGINE CHALLENGE COLLABORATIVE
ENGAGE TREATMENT JUSTICE
DISRUPTION REIMAGINE CHALLENGE



RED HOOK
COMMUNITY
JUSTICE
CENTER

Friday, November 16

All tour departures 1pm

The Red Hook Community Justice Center | 2:15–4:15pm

ADDRESS 88 Visitation Place, Brooklyn NY 11231

DIRECTIONS Take the ferry to The Red Hook Community Justice Center. Plan for 40 minutes of travel time and one transfer at the Wall St.–Pier 11 station to Red Hook.

DESCRIPTION

The Red Hook Community Justice Center is a community court that was created to address the unique social and judicial needs of its surrounding neighborhood, the 72nd, 76th, and 78th Precincts. The Justice Center is a collaborative effort of the Brooklyn District Attorney's Office, the Center for Court Innovation, and the Office of Court Administration. A team of assistant district attorneys, handling about 4,000 misdemeanors each year, is specifically assigned to the Justice Center. They have in-depth knowledge of the community, frequently attending community meetings and participating in neighborhood events.





Friday, November 16

All tour departures 1pm

Kings County Supreme and Family Courthouse | 2:15-4:15pm

ADDRESS 330 Jay Street, Brooklyn NY 11201

DIRECTIONS Take the subway to The Kings County Supreme and Family Courthouse. Plan for approximately 33 minutes of travel time including one transfer (exit World Trade Center Path to the Fulton St. Subway station).

DESCRIPTION

In addition to prosecuting felony cases and operating its specialty courts, the court participates in the Court Tours and Community Outreach Program. This program was developed to familiarize students, senior citizens and civic organizations with the dynamics of the courts of New York State. As a member of the Brooklyn community, the court aims to provide courteous and professional service to its fellow citizens and to maintain a courthouse that reflects the dignity and respect the law deserves. When you visit the courthouse, please let us know if we are meeting those goals by completing one of the Quality Service comment cards that can be found throughout the building.





Surrey Courthouse Addition

Surrey, BC, Canada

Architect **NORR Architects and Engineers**

Associated Architect **Ratio Architectural Interior Design and Planning Inc.**

Photo credit **NORR limited**

[illegible]

AARON HERRING, NCARB, LEED AP

Aaron Herring has a Bachelor of Arts degree in studio art from Indiana University and a Master of Architecture degree from Arizona State University. He has been working in the architectural profession for 12 years, at the intersection of art and architecture. He has led numerous national awards competitions and has worked on many of the studio's most complex architectural projects.

AMANDA CHEBALO, AIA

Amanda Chebalo is an emerging architect specializing in public safety facilities in AECOM's Public Safety Studio. She graduated from Savannah College of Art and Design with a Masters in Architecture degree in 2004 and was inducted into the Tao Sigma Delta honor society. She has previously served as the Law Enforcement track leader for the AAJ 2017 National Conference in Cincinnati and recently served as the emerging professional representative for the Justice Facilities Review.

AMIE GROSS, AIA

Amie Gross founded AmieGross Architects in 1984. AGA designs multifamily housing, health, workplace, and community facilities primarily for the not-for-profit and government sectors. All of her work creates aesthetically rich and well-organized spaces that celebrate human interaction and promote wellbeing. Her TEDx Talk: Seeding Community, spoke to how effective design can uplift and honor those in need. Amie graduated from Washington University School of Architecture, where she received the Distinguished Alumni Award.

AMY GALYON

Amy Galyon has been the Program Director for the Blount County Recovery Court since July 15, 2010. The program has seen many changes and substantial growth and Mrs. Galyon continues to find innovative ways to address the drug epidemic facing our community. Amy has attended yearly training to keep the program current with recommended practices; worked with others in the community to establish a 501c3; partnered with many community groups; arranged speaking engagements to provide awareness in the local high schools; opened a Men's Transitional Living House through the Blount County Recovery Court Foundation Inc. (501c3); and gained the attention and support of the County Commission.

Mrs. Galyon graduated from Tennessee Technological University in 1992. She obtained a Bachelor of Science Degree in Sociology along with an Associate's Degree in Criminal Justice. Following graduation, she obtained employment with the State of Tennessee as a Protective Services Case Worker with The Department of Human Services (now Department of Children Services) investigating child abuse allegations. In 1997, she went to work for Blount County Sheriff's Office as a Child Abuse Investigator. She was promoted to Detective and gained experience investigating criminal reports ranging from property crimes to homicides. Galyon left the Sheriff's Office in 2000 to focus on her growing family and worked part time with her father on his dairy farm in Walland, Tennessee. In 2001, she went to work for Vanderbilt Mortgage in collections. She promoted to Senior Collector in 2002 and remained here until 2004. In 2008, she returned to Blount County Government working as a Probation Officer with Blount County where she worked supervising individuals on misdemeanor probation.

ANDIE MOSS

Andie Moss is founder and president of TMG. Through her organization, Ms. Moss manages multiple strategies to assist the field, including implementing the Prison Rape Elimination Act, working effectively with woman offenders, providing executive leadership training, assessing and supporting mission change and transition strategies, developing and leading culture change initiatives, delivering investigative trainings, and facilitating strategic planning.

ANDREW CUPPLES, FAIA

Andrew Cupples is a nationally recognized expert in justice design. He is currently DLR's justice leader in Los Angeles.

ANDY PITTS, AIA

For over 20 years, Andy has been involved extensively with managing justice-related projects for cities and counties. He brings experience, knowledge, and lessons learned from each project as well as leadership and communication skills, ensuring that each design decision is in line with project scope and desired outcomes. His expertise is in providing viable options that meet the specific needs of each client and exceed the standards of the industry.

BEVERLY PRIOR, FAIA, NCARB, LEED AP

Beverly Prior is AECOM's vice president and justice architecture lead in the West. Her recent projects include scoping Los Angeles County's \$2+ billion design-build Correctional Treatment Facility, San Francisco's \$150+ million Rehabilitation Detention Facility, and Santa Clara County's \$300+ million New Main Jail addition, each of which has focused on facilities for those with mental and behavioral health issues within a detention environment. In her passion for creating livable and sustainable communities, she cofounded the AIA Academy of Architecture for Justice's Sustainable Justice Committee. She is a frequent presenter at national conferences, recently on the topic of wellness in building design and operations as a new frontier for sustainability in justice. She was recently interviewed on PBS NewsHour Weekend for their report, "Architects designing for prisons confront ethical questions," and is a regular contributor of articles for Correctional News.

BLANCHE CARNEY

Blanche Carney, MSS, CCM, graduate of Lincoln University and Bryn Mawr College's Graduate School of Social Work and Social Research was appointed Commissioner of the Philadelphia Department of Prisons (PDP) in 2015. As Commissioner of the Philadelphia Dept. of Prisons, Ms. Carney is the first woman to head the almost 200-year-old jail system. The PDP employs over 2,500 employees and contracted staff. There are five facilities in Northeast Philadelphia which incarcerates over 5,000 people accused of crimes in Philadelphia. Her dedication to the staff under her direction and the inmates in her custody is endless. She maintains that inmates who are willing to receive services during and post incarceration will help them to return to our communities prepared to accept the responsibility of regaining control of substance abuse or behavioral health problem. She is a fierce advocate for everyone in her charge.

BOB SCHWARTZ, FAIA

Bob Schwartz is the group vice president of HOK Justice, and co-chair of the AIA AAJ Sustainable Justice Committee. Bob has 35 years' experience in programming, planning, and design of all types of justice facilities. This thorough knowledge helps create synergistic solutions that fulfill each client's unique requirements, providing operationally efficient, effective, secure, and restorative facilities. He has pioneered innovative planning and design features including direct supervision, daylighting, accessibility, secure circulation concepts, and advanced technology applications. Over 25 of his past projects have been published in the Justice Facility Review.

BRETT FIRFER, ASSOC. AIA

Brett Firfer is a justice planner at CGL, with extensive experience in planning and programming courthouse and correctional facilities nationally. His expertise consulting at county, state, and federal levels has given him insight into the policy issues and related facility needs that impact operational and design priorities in every justice project. Brett is currently co-chair of the Architecture for Justice Committee at the AIA New York Chapter.

BRIAN MEADE, AIA

As Dewberry's National Public Safety Facilities segment leader, Brian Meade is involved in pursuit and project development for many of Dewberry's police projects. With 22 years of experience working mainly on community and municipal project types, Brian utilizes strong programming and planning skills to help design efficient, functional, and civic solutions to client's needs. Brian's creative project approach has led to numerous design awards and speaking and writing opportunities on the topic of public safety design.

BROOKE MARTIN, AIA

Brooke Martin is co-chair of the AIA AAJ Sustainable Justice Committee. Brooke has 10 years of experience as a skilled correctional designer and architect, and she has worked on a wide variety of local and national projects from K-12 to higher ed, museums to criminal justice, and mass transit to airport terminals. Brooke also teaches architecture part-time at Illinois Central College as an adjunct professor.

CAROL LANHAM, AIA

Carol Lanham, AIA, NCARB, LEED AP has over 30 years of experience working in the A/E/C industry and five years of experience working as the Owner's representative for the Eighth Circuit, United States Court. She possesses strong executive leadership and project management skills and has a thorough understanding of highly technical building types, complex building codes, accessibility standards and architectural and construction contracts.

As an architect, senior project manager and market sector principal, Carol has experience managing large teams in the development of needs assessments, programming, design and construction documents on large multimillion dollar government, courthouse, jail and civic projects. She functions as the primary point of contact with the Owner, often acting as the interface between Owner and internal user-groups, and routinely manages multiple large projects concurrently. Carol is familiar with overseeing projects that involve managing the needs of many diverse stakeholders including the GSA, Federal Judges, Federal and County court and law enforcement agencies and national governing bodies. She believes in highly collaborative, interactive teams as the best way to achieve positive results and this philosophy has led to design solutions that offer successful outcomes not only for clients and user groups but also for architectural and engineering project teams.

CHARLES STERLING

CHARLES WEND

Charlie Wend carried the Skagit County Community Justice Center project from inception through construction. His understanding of the impact of the built environment on his staff and the benefit of inmate wellness brought innovative design solutions to the table. Charlie was with the Skagit County's Department of Corrections for nearly 40 years, and jail commander for the past seven, and will continue to develop inmate programming in the future. He is an AAJ Justice Facilities Review 2018 jury member.

CHERYL ROBERTS

Cheryl Roberts is Executive Director of the Greenburger Center for Social and Criminal Justice, a nonprofit organization working to decriminalize mental illness. Roberts is a licensed bond agent in New York State, a former local judge from Columbia County, New York, and served as Corporation Counsel for the City of Hudson, New York. Earlier in her career she practiced environmental and land use law and served as a counsel to committees in both the U.S. House of Representatives and the U.S. Senate.

CINDY HARDEN

Cindy Harden is the founder and partner of EQ Architecture PLLC. Prior to founding EQ in 2017, Ms. Harden was a founding partner of Harden Van Arnam Architects in 1989. Both firms have specialized in the design of supportive housing, housing for those with special needs and low and moderate income individuals and families. Her work with EQ and HVA has resulted in the successful completion of over 4000 dwelling units and support spaces throughout New York City. Ms. Harden's work has been published in various architectural magazines and books and she has been the recipient of several design awards.

Ms. Harden received a Bachelor's Degree from the Georgia Institute of Technology and a Master of Architecture degree from Washington University where she studied in the joint degree program in Architecture and Social Work.

DAN GALLAGHER, AIA, NADAAA

Practicing architecture for over twenty years, Dan Gallagher has developed a deep understanding of the design, management, development, and construction administration required for projects of all scale, whose ambition is innovative design, technical excellence, and cost and schedule management. As Principal of NADAAA, Dan has led a range of civic, institutional, retail, interior, residential, and hospitality projects around the globe. His dedication to the execution of innovative design and the creation of signature architectural experiences has been acknowledged with numerous awards and honors. Expanding his experience in the discipline, Dan co-chaired the Global Dialogues Committee for the American Institute of Architects New York (AIANY) Chapter for three years (2014-2016). In this role, he envisioned and coordinated 18 symposia with nearly 100 speakers and also co-edited the AIANY book, Architect d.b.a. He is a frequent guest at design school juries, including sitting on review juries at NJIT. He was an Adjunct Studio Instructor at the Rhode Island School of Design (1995 – 2007) and has lectured at Cornell University and the AIA, at multiple events and venues.

JUDGE DARAYNE ACHIN

Darayne Achin is an enrolled member of the SRPMIC, born and raised in the community. Except for a short stint of residing in Germany for four years as a military spouse, then two years of service in Minot, North Dakota, Mrs. Achin and her family returned home to Scottsdale, Arizona where she currently resides and has recently been serving as the Community Court's Acting Chief Judge.

Judge Achin was appointed Associate Judge in January 2004 as a Civil Judge and served for 13 years, served as a pro-tem judge for two years before being re-appointed in 2016. Judge Achin currently presides in the Juvenile Dependency Court.

DARRYL STELLING, AIA

Darryl Stelling is the Global Justice + Civil leader/principal at DLR Group, an international architecture and planning firm. Darryl has devoted his career and expertise to design excellence in justice facilities. He is the lead principal at DLR's Northern California headquarters in Sacramento, CA.

DAVID CLOUD

David is a senior program associate at the Vera Institute of Justice. His work broadly focuses on the implications of mass incarceration for community health disparities and the role of public health systems in advancing justice reform. He leads Vera's initiative to address solitary confinement in Louisiana prisons. He has a law degree from Villanova Law School, an MPH from Columbia University, and is completing a PhD in public health at Emory University.

ELIZABETH FORD, PHD

As chief of psychiatry for correctional health services for New York City's Health + Hospitals, Elizabeth Ford is responsible for the mental health care of those incarcerated in New York City jails. Formerly the director of the Division of Forensic Psychiatry at Bellevue Hospital, she has dedicated her career to providing care to individuals with mental illness in the criminal justice system. Elizabeth teaches and writes extensively about the interface of mental health, law, and correctional settings.

ERIC LAUTZENHEISER, AIA, ACHA

Eric Lautzenheiser has focused on healthcare planning for the bulk of his professional career. Dual trained as an architect and city planner, he brings to the table an understanding of healthcare as a collection of complex interactive systems that focus on care and healing. His approach toward programming, planning, and design focuses on a continuous, integrated process that collaborates with key client clinicians, administrators, patients, and patient advocates. As part of his overall healthcare practice, he has had the opportunity to focus on the complex and compelling issues of behavioral health planning and design in inpatient, outpatient, and emergency department settings.

ERICA LOYND, AIA

Erica Loynd centers the design conversation with the owner to goals, needs, and expectations of stakeholders, and is particularly passionate about sustainability, restorative justice, and the impact of the built environment on wellness. She unifies team members on design options that take advantage of passive opportunities, daylighting, natural ventilation, and material choices (acoustics, material colors, textures, and space planning)—restorative strategies to significantly reduce reliance on mechanical/electrical systems.

ERIN PERSKY, ASSOCIATE AIA, CCHP

Erin Persky is a planner specializing in justice facilities and has over ten years of experience conducting research. Her current research focuses on therapeutic justice environments and building evaluation. Erin has recently published two works on post-occupancy evaluation and presents her work to numerous criminal justice organizations. Erin is an Associate Member of AIA and a Certified Correctional Health Professional with the National Commission on Correctional Healthcare.

FRANK GREENE, FAIA

A national leader in the planning and design of justice facilities, Frank Greene works to develop solutions that enhance the vitality of the civic realm. He served on the Advisory Group for the AIA Academy of Architecture for Justice. Frank is a cofounder of the NYC/AIA local AAJ and the AAJ Sustainable Justice initiative. He has organized events on sustainable justice and is a noted speaker and writer on justice architecture topics.

FRANK PITTS, FAIA, FACHA, OAA

Francis Murdock Pitts buys his groceries by serving as the managing principal of architecture+, a 40-ish person collective pretending to be a capitalist organization. architecture+ has been named a “Best Place to Work” in New York’s Capital Region for each of the past nine years. ARCHITECT Magazine ranked architecture+ as number 32 in their listing of the top 50 firms in the US on the basis of business and cultural practices. Frank has earned a small reputation for his skills in designing libraries (he's an avid reader) and for his work with facilities designed for the mentally ill, developmentally disabled, and criminally insane. Postponing the onset of a (now late) midlife crisis, Frank has served as the president of AIA's Academy of Architecture for Health and the American College of Healthcare Architects. He recently served as national vice president of the American Institute of Architects. In 2018, Frank was named the Changemaker Award Recipient by the Center for Health Design.

GREGORY COOK, AIA

Greg Cook has been engaged in the practice of architecture, engineering, and design for 20 years, cultivating highly collaborative relationships with clients, resulting in unique projects that solve programmatic complexities and fulfill aspirations. His career has focused on these relationships and their quality of design and clarity of process. Greg is a recognized thought leader in justice facility planning and design, having written and spoken extensively on restorative design concepts that positively influence the human experience.

INGRID STROMBERG, LEED GA

Ingrid Stromberg works closely with practitioners and researchers to keep design on the cutting edge of innovation. She has been integral to internal and external research initiatives involving such topics as the built environment and health, resiliency, and sustainable communities, most recently looking at the impacts of innovations in mobility technology on the built environment. Underpinning all of this is an understanding of design and planning, cultivated through years of work in landscape and urban design.

JAY FARBSTEIN, FAIA, PHD

Jay Farbstein is recognized for his contributions in the field of justice facility planning and research, with over 100 projects completed. He has published many books and papers and received numerous awards. A registered architect in California, he holds degrees from UCLA, Harvard, and the University of London. He has pioneered post-occupancy evaluation for justice facilities and researched the application of neuroscience and evidence-based design findings to correctional facilities. Jay serves as co-chair of the AIA's Academy of Architecture for Justice Research and Technology Committee. Recent correctional mental health projects include Los Angeles County's Consolidated Correctional Treatment Facility and related projects for Santa Barbara and Contra Costa Counties.

JEFF HARMON

Jeffery Harmon is a member of the Cherokee Nation in Oklahoma and is the Chief Prosecutor for the Salt River Pima-Maricopa Indian Community (SRPMIC) in Arizona. Mr. Harmon is also appointed as a Special Assistant United States Attorney for the United States Attorney's Office, District of Arizona. Through his work with the SRPMIC, Mr. Harmon strives to improve the services to the Community and to protect the general welfare of the Community, in particular children and vulnerable adults. He serves on many local and national boards regarding Indian Law, Collaborative Bar Leadership Academy, to strengthen pipe lines for diverse Bar association leaders. He mentors Native American law students and Native American attorneys who are new to the practice of law.

JEFF LANE, AIA

As a justice studio principal, Jeff Lane manages projects that range from \$50,000 to \$50 million of new and renovated justice space. He has dedicated his career to justice architecture including programming and design of jails and county facilities. He has worked with a variety of clients and brings a knowledge to solving the needs of his clients.

JESSICA LAX

Jessica Lax is an urbanist and activist at the Van Alen Institute, where she who drives social equity and inclusion through design, economic development, and community engagement. Prior to joining the institute, Jessica worked at the New York City Economic Development Corporation, where she launched the NYC's first vacant lot activation projects and low-income entrepreneurship incubator. She also worked for the NYC Department of Transportation, where she implemented Queens' first neighborhood bicycle network and initiated in the redesign of Queens Blvd, previously one of the most dangerous boulevards in the world. Jessica received her master's in urban planning with honors from Hunter College and acknowledgment from the American Planning Association. She received her bachelor's in environmental studies from the University of Michigan.

JOHN EISENLAU, AIA

Through his experience designing justice facilities across the nation, John Eisenlau has an understanding of how all elements of the justice community (law enforcement, local detention, legal, prisons, etc.) interact. Using this knowledge he develops building programs that support the complexity of the whole system while improving safety and efficiency. John believes architects have an opportunity to assist in the recovery of the incarcerated through the design of secure, rehabilitative, and flexible facilities.

JOSEPH FORD

Joseph Ford has been Countryside's police chief since 2013, coming from the Burbank Police Department where he served for over 30 years. Chief Ford earned a Bachelor of Science degree in administration of justice from Southern Illinois University in 1982, attended the Cook County Sheriff's Police Academy in 1983, and later earned a master's degree in criminal justice from Chicago State University. Chief Ford teaches current and future Law Enforcement Officers at Moraine Valley Community College.

JUDGE GINGER LERNER-WREN

Ginger Lerner-Wren is a county judge in the Criminal Division of the Broward County Court of Florida. She has served in this position since 1997, and her current term expires on January 8, 2019. She received her bachelor's degree from the University of Miami and her juris doctor degree from the Nova Southeastern University Law Center. She began her career as a commercial real estate and general practice lawyer, and later became a public guardian in the 17th Judicial Circuit and worked as a PAIMI lawyer (Protection & Advocacy for Individuals with Mental Illness).

JULIAN JAFFARY, OAA, MRAIC, INT'L ASSOC. AIA

An architect based in Toronto, Canada, Julian is recognized as a leading specialist in courthouse planning and design. Over the last 18 years she has been instrumental in the development of several newly constructed courthouses in Ontario, including the Durham Courthouse (36 courts) and the Waterloo Courthouse (30 courts). Julian was a key member of the consulting team tasked with preparing a detailed functional program and conceptual design for a new 65-courtroom high-rise criminal courthouse for downtown Toronto. She is currently part of the design team for a new courthouse located in Fredericton, New Brunswick.

Julian's interest is instilling design excellence into the processes and decisions that shape the architecture of our public realm. She is a graduate of the University of British Columbia, School of Architecture, and is on the executive committee of the Canadian Academy of Architecture for Justice.

KARL BECKER

Karl Becker has 35 years of experience in criminal justice system planning for federal, state, and local jurisdictions. As deputy director of the Illinois DOC, Karl directed long-range planning for a \$1.4 billion operating budget. As a private consultant, he has managed over 50 major projects that have included facility plans, performance reviews, staffing analyses, organizational assessments, and program evaluations. He holds a master's from University of Illinois Urbana-Champaign, and a bachelor's from Knox College.

KENNETH J. HARMS

Harms, Vice President, Kitchell, joined in 2011, and is responsible for Kitchell's business development and marketing in its core construction management and program management markets, as well as strategic business and account planning. In his role, he is involved in marketing and sales support in all regions, including its Latin America office as well as developing future markets.

KHALIL A. CUMBERBATCH

Khalil A. Cumberbatch, Associate VP of Policy at Fortune Society, is a nationally recognized formerly incarcerated advocate for criminal justice and immigration policy change. He has worked within the reentry community in NYC since 2010 when he was released after serving almost seven years in the NYS prison system. Khalil graduated from CUNY Herbert Lehman College's MSW program in May 2014, where he was awarded the Urban Justice Award. He is also a lecturer at Columbia University School of Social Work.

KATHY NYLAND

Over the years, Kathy has strategized and advocated on behalf of neighborhoods and other underrepresented communities. Driven by a sense of fairness and a wonky passion for inclusive outreach, Kathy believes in the power of good policy and public engagement. She has mobilized community resources, engaged broad public participation in programs and projects, and identified established and emerging community leaders, all while understanding that civic engagement depends upon access to information.

KEVIN MURRETT, AIA

Kevin Murrett is the president of Architectural Resources, a leading behavioral healthcare design firm. With over 30 years of practice based equally in research, evidence-based standards, and facility design, Kevin connects the unique worlds of clinical practice and building design to create highly effective, safe, cost-effective, and aesthetically pleasing mental health treatment environments.

KIERSTIN ANDERSON

Kierstin graduated from Washburn University Law School with honors. She joined the Pascua Yaqui Tribe as a staff attorney for the Legal Services Office in 2005. Kierstin has been with the Salt River Pima-Maricopa Indian Community for almost 10 years. The office serves individual community members with civil matters in state, federal, and tribal courts and provides guardian ad litem representation in dependency and mental health in tribal court cases.

KRISTA SHEPHERD, AIA, NCARB, LEED AP, NCIDQ

Krista Shepherd holds a Master of Architecture degree from Arizona State University and a Bachelor of Art degree in interior design from Kent State University. Krista jointly leads the Gould Evans Phoenix studio blending architecture, landscape, and urban design. She brings conceptual thinking, technical expertise, and optimism to design. Essential to Krista's existence is being in the "mess of design," a process that fosters debate and where contrasts find resonance in emergent work.

KRISTEN HALL, AICP, LEED AP-ND

Kristen Hall is an urban designer and planner who specializes in complex urban infill projects focusing on the creation of sustainable, resilient, and adaptive communities. Through her experience both locally and internationally, she has worked across many different scales and contexts to design masterplans, write guidelines, coordinate public outreach, and create implementation strategies. Kristen's core area of expertise is delivering projects that require innovation, interdisciplinary collaboration, and stakeholder engagement.

KYMBERLI BARRETT

LAURA MAIELLO-REIDY

Laura Maiello-Reidy is a justice planning consultant, formerly the senior vice president with CGL, and an associate principal with Ricci Greene Associates. With more than 30 years of experience in correctional and justice system planning, programming, master planning, and pre-design, her emphasis is on developing a philosophical mission and operational context for facility planning and design decisions. Laura has been involved in the development of dozens of jail and justice projects, many of which incorporated mental health planning and design considerations.

LAUREN D'ISSELT

Director of Community Access' Crisis Respite Center. Community Access expands opportunities for people living with mental health concerns to recover from trauma and discrimination through affordable housing, training, advocacy and healing-focused services.

MALLORY SCOTT CUSENBERY, AIA

Mallory Scott Cusenbery is the design principal at RossDrulisCusenbery Architecture, Inc., an award-winning Bay Area firm specializing in community, youth, justice, and public safety projects. Mallory is also a writer and curator on topics of architecture and urban design.

MARDELLE MCCUSKEY SHEPLEY, FAIA, FACHA, LEED AP

Mardelle McCuskey Shepley is chair/professor in the Department of Design and Environmental Analysis and associate director of the Institute for Healthy Futures at Cornell University. Her books include Healthcare Environments for Children and their Families, A Practitioner's Guide to Evidence-based Design, Design for Critical Care, Health Facility Evaluation for Design Practitioners, Design for Pediatric and Neonatal Critical Care, and Design for Mental and Behavioral Health. Mardelle has practiced architecture for 25 years.

MARK RYAN, AIA

Mark Ryan believes in the art of the possible. With a keen focus on the value that good design brings to both the individual and the collective community, his approach and practice have been highlighted by projects that are simultaneously civic in nature and personal in their potential impact. He brings 25 years of experience and a portfolio that is a diverse mix of award-winning projects recognized for their specific, unique solutions to the challenging circumstances presented by each new project. Mark's dedication to justice and juvenile projects have allowed him to provide design, studies, and master plans for more than 20 juvenile facilities, including the first LEED Platinum juvenile project in the country.

MELISSA FARLING, FAIA, LEED AP

As a principal of the Gould Evans Phoenix Studio, Melissa Farling provides leadership to the firm and within the profession, focusing primarily on the impacts of architecture on people. Her 30-year career has focused on justice and public projects of all sizes. She is a member of the Academy of Architecture for Neuroscience Advisory Council, has served as co-chair of the AAJ Research Committee, and is currently a member of the AAJ Leadership Group.

MICHAEL AUSTIN, AICP, LEED AP-ND

As a campus planner and urban designer with Perkins+Will, Michael Austin has been involved in a number of master planning efforts across the United States. Michael is focused on building momentum for integrating social equity into firm-wide practice and is also a member of Perkins+Will's Mobility Lab. He currently serves as Vice Chair of the Seattle Planning Commission, and previously served on the Seattle Design Review Board.

MICHAEL COX, AIA

Michael Cox has dedicated his 44-year career to the planning and design of architecture for government and their justice facilities. Working with city, state, and federal clients, he has helped them create thoughtful new approaches for all of their facility workplaces, operations, and environments. His experience includes police, police training, emergency operations and 911 dispatch centers, behavioral health facilities, jails and law enforcement centers, prisons, administrative and service centers, and court facilities. He has worked on over 1,000 courtrooms in over 40 major court facilities. His collaboration with his clients has focused on urban design, operations, and interior design resulting in effective, sensible, and aesthetically refined facilities. Michael has received national, state, and local AIA Awards as well as JFR Citations.

MICHAEL MURPHY

Michael Murphy is the executive director of MASS Design Group, a nonprofit architecture firm that leverages buildings, as well as the design and construction process, to become engines for health, justice, and dignity. MASS's work has been recognized globally, winning the 2017 Cooper Hewitt National Design Award for Architecture. Michael sits on several boards, including the Clinton Global Initiative Advisory Committee, the Harvard Graduate School of Design Alumni Board, and the Center for Healthcare Design.

NAOMI A. SACHS, PHD

Naomi Sachs is a postdoctoral associate in the Department of Design and Environmental Analysis at Cornell University and the director of the Therapeutic Landscapes Network. Naomi received a doctorate in architecture from Texas A&M, a master's in landscape architecture from UC Berkeley, and a bachelor's from Brown University. She is coauthor of *Therapeutic Landscapes: An Evidence-Based Approach to Healing Gardens and Restorative Outdoor Spaces*. Naomi is coeditor of the *Health Environments Research & Design Journal*.

NICK SEIERUP, FAIA

Nick Seierup designs architecture that celebrates the modern public realm, focusing on the issues of community, context, and culture. As design principal for Perkins+Will's Los Angeles office, Nick oversees a wide range of project throughout the world, including education, civic, mixed-use, science + technology and healthcare typologies. He has taught at SCI-Arc, USC, UCLA, and Woodbury University, and his work with Perkins+Will has been recognized with over 80 awards for design excellence.

REBECCA HOLT, LEED AP BD+C, ND

Rebecca Holt is an urbanist, researcher, and specialist in sustainable development at Perkins+Will San Francisco. Working closely with design leaders and research partners, Rebecca is a champion for high-quality built environments, vibrant communities, and thriving natural systems.

RICHARD WENER, PHD

Professor of Environmental Psychology at New York University and author of *The Environmental Psychology of Prisons and Jails: Creating Humane Spaces in Secure Settings*, Richard Wener studies how correctional architecture affects facility operations, staff, and inmate behavior. Beginning in 1975 with evaluations of the first "new generation jails", he has since conducted dozens of surveys and evaluations of prisons and jails nationwide, addressing design and management features to reduce violence, vandalism, and stress in correctional settings.

ROBERT BORAKS

Robert Boraks is a Director with Parkin Architects Limited and manages Parkin's office in Ottawa. Since graduating from architecture in 1988, he has had experience working on numerous building typologies. He has developed working methodologies for integrated design strategies which has lead to a number of publications. Robert is Parkin's lead designer for Justice and Security Institutions and has extensive experience in Health Care and other Institutional building types. He has received a number of Provincial appointments.

ROBERT FISCH, AICP, LEED AP

Rob Fisch is senior vice president at CGL, where he leads the planning and concept design projects. Over the past 30 years, Robert has served as consultant to judges, sheriffs, legislators, and other justice stakeholders. He's currently undertaking correctional master plans for Philadelphia and New York City. He has a bachelor's in environmental design from SUNY at Buffalo. He is a certified planner, is LEED accredited, and is a frequent speaker and author on justice facilities.

ROD WILLIAMS, AIA, CPD

Rod Williams brings more than 15 years of experience to municipal and public safety clients. From law enforcement facilities to fire stations and police heliports, Mr. Williams has led the successful planning and design efforts for facilities throughout the Mid-Atlantic region. As a CPTED designated professional, he lends his expertise in the security of public safety and municipal facilities to design cost-effective, highly-efficient buildings.

RONA G. ROTHENBERG, FAIA

Rona G. Rothenberg is the capital program manager for the County of Alameda. Rona has spent the past 31 years of her career delivering capital campus and building programs in government and industry and has been employed in State of California and local government for the past 17 years, where she focuses on justice and civic projects.

RUTH O’SULLIVAN

Ruth O’Sullivan is the project/clinical director of the Brooklyn Mental Health Court, a program of the Center of Court Innovation. Serving the Court since 2007, Ruth received her LMSW from Hunter College.

SABRINA AMES

Sabrina Ames is an assistant planner and emerging professional who works with stakeholders to define their future needs for the built environment. She is able to expand on these aspects of programming through exploring other avenues of research within the Criminal Justice field. Sabrina also helps stakeholders administer surveys, collect, and analyze data to better understand the needs and wants of all parties affected by a change in environment.

SEÁN MARTÍN DALPIAZ

Seán Martín Dalpiaz is currently the Vice President of Real Estate and Facilities for Covenant House NY. Prior to CHNY, Sean was a Program Director at SCO Family of Services Independence Inns, a residential program for runaway and homeless youth in Brooklyn and Queens. In addition to working with youth, Sean is an Adjunct Professor at Metropolitan College of New York. Incarcerated for eight years, Sean was able to earn an advanced degree and pursue what many may have thought was the unattainable. He completed his Associates Degree while in prison and had several pieces of writing published. Upon his release, he earned his Bachelors in Sociology and Masters in Public Administration. Sean has for years been passionate about advocating for the voice of those who are marginalized, particularly those involved in the criminal justice system, homeless youth and youth in foster care. He has served on the Strategic Adolescent Advisory Board for Rikers Island, and spearheaded a project funded by the New York City Mayor's Office on Criminal Justice to improve community relations between the New York City Police Department and homeless youth in NYC. Sean is working on his first book, an anthological memoir.

STACEY SAUNDERS

Stacey Saunders, Former Assistant Director for System-Involved Youth at The Door, has worked for nonprofit entities most of her career, primarily with families and individuals suffering with HIV/AIDS, mental illness, and/or chronic homelessness. For the past eight years, she has served the young people of The Door and committed to fostering a positive youth development and caring environment for all young people. With over 15 years in the field serving New York's most vulnerable populations, working with such diverse people is the most fulfilling part of her career. Stacey holds a Master's Degree in Public Administration and Policy and Master's Degree in Social Work from the Silberman School of Social Work at Hunter College.

STEPHEN CARTER, ASSOC. AIA

Stephen Carter is an Executive Vice President and Global Strategic Development Officer at CGL. Mr. Carter is personally involved in technical studies in the areas of needs assessment, operational and architectural programming, design review, program management, and policy evaluation, among others. He is often engaged by governmental agencies to develop analytically based studies and build consensus for a variety of project types ranging from courthouses to correctional institutions to law enforcement installations. His comprehensive experience in all sectors of the justice system assists clients in realizing the functional linkages between the various components.

STEVEN LOOMIS, FAIA

Steve Loomis speaks at local, regional, national, and international events with AIA and other national professional organizations. He focuses on the quality of the interior environment, the incorporation of technology, and impact on the exterior environment on the communities created by justice facilities. He brings to the forum a research basis supporting the design thesis for each justice building type. Steven advised the NJIT Law Enforcement Studio in spring 2018.

TAMIKA GRAHAM

Tamika Graham is a zealous advocate for ending mass incarceration and homelessness who actively engages her public speaking skills, lived experience, and humble personality to motivate others to action. When she is not teaching high school equivalency classes at the Brownsville Community Justice Center with the Bard Prison Initiative and Youth Build, she attends community organizing training with JustLeadershipUSA, continues studying for her Bachelor's Degree, and spends time with her amazing daughter. She is a Rehabilitation Through the Arts alumni and enjoys taking in Broadway performances, comedy shows, and visiting museums.

THOMAS NAVIN, AIA, ASLA

Thomas Navin is a senior university lecturer at the College of Architecture and Design at New Jersey Institute of Technology in Newark. At NJIT, he has taught studio at each of the undergraduate levels as well in the first and second year graduate studios. Additionally, he teaches a number of seminar electives that address a variety of topics involving the field of Landscape Architecture. Tom has an architectural practice in New York City.

TIM WOLFE

Tim Wolfe is the community investments deputy director at the Seattle Department of Neighborhoods. He has been focused on building community capacity through increased technical assistance, and reducing barriers to participation in neighborhood programs. Tim also oversees Seattle's participatory budgeting process, "Your Voice, Your Choice," which successfully engaged more than 3,000 of the city's youth in decision-making to allocate \$700,000 in 2016 for programs related to homelessness, human services, and transportation.

WES HOUK, CAPTAIN DOUGLAS COUNTY SHERIFF'S OFFICE

Wes Houk started in Law Enforcement in 1995 with the Metropolitan Topeka Airport Authority, joining the Douglas County Sheriff's Office in Lawrence, Kansas in 1997. Wes has served the citizens of Douglas county as a patrol deputy, as a field training officer and in courtroom security. He moved up the ranks, within the department, by 2008 advancing to the rank of Captain serving both the Operations and Corrections Divisions. He has helped develop the Reentry program starting in 2008 with the Transition from Jail to Community as a pilot site. During his tenure at the Douglas County Correctional Facility the mental health staffing has increased to four fulltime clinicians and expanded the reentry services to five staff. These services include Women's Substance Abuse Program, A.I.D. Program and joining the Stepping Up Initiative. Programs have been recognized by SAMSHA and one of eight National Innovator Counties by NACO. Wes is currently overseeing a medication assisted treatment program (MAT) for the correctional facility which continues into the community along with the Sheriff's Office early opioid intervention program utilizing NARCAN.



Stanislaus County Public Safety Campus

Modesto, CA

Architect **HOK**

Associated Architect **Lionakis, Dewberry, LDA Partners, Pacific Design Associates**

Photo credit **Ed Asmus Photography**



REIMAGINE CHALLENGE COLLABORATIVE
SUPPORT ENGAGE TREATMENT JUSTICE
RACE AAJ CONFERENCE 2018 ENLIGHTENED JUSTICE
ADVANCING TREATMENT JUSTICE
ENLIGHTENED JUSTICE: DISRUPTING ADVANCING TREATMENT
CHALLENGE COLLABORATIVE ENGAGE EXHIBITORS TREATMENT
COLLABORATIVE COMMUNITY DIVERSION HEALING DISRUPT
ENGAGE TREATMENT JUSTICE TREATMENT SUPPORT JUSTICE
NE JERSEY CITY, NJ COMMUNITARIAN COLLABORATIVE NOVEMBER 14-17
JUSTICE HEALTH HEALING EFFECTIVE REIMAGINE CHALLENGE COLLABORATIVE
ENGAGE TREATMENT JUSTICE DISRUPTION REIMAGINE CHALLENGE



Acorn Engineering/ Acorn Vac Table #26

15125 PROCTOR AVE
City of Industry, CA 91744
acornvac.com

Craig Johnson, National Sales Manager
(800) 591 9920
cjohnson@aconvac.com

Stop by our booth to find out why plumbing engineers, architects, and building owners call us problem solvers.

ARCONAS

Arconas Table #34

5700 Keaton Crescent
Mississauga, ON L5R3H5
arconas.com

Sherry Martin, Commercial Sales Manager
(905) 272 7671
smartin@arconas.com

Arconas specializes in the development of seating, power, and waste solutions for high-traffic waiting areas.



Cornerstone Detention Products, Inc. Table #15

14000 Alabama Highway 20
Madison, AL 35756
cornerstonedetention.com

David Tidwell, Business Development Director
(256) 214 1587
dtidwell@cornerstonedetention.com

Cornerstone is the leading detention and security electronics provider. We specialize in the design, manufacture, distribution and installation of institutional detention equipment including Airteq, which manufactures security locks, sliding devices and door hardware. We are the industry's leading electronic security systems manufacturer and integrator with in-depth experience in the design, engineering, programming and manufacturing of electronic security systems.



Global Security Glazing Table #28

616 Selfield Rd.
Selma, AL 36703
security-glazing.com

Chad Snyder, Sales Manager
(724) 290 3136
csnyder@security-glazing.com

Global Security Glazing is the leading manufacturer of security glass and glazing products.



Protecting lives
and reputations



Guard1 by TimeKeeping Systems Table #21

30700 Bainbridge Rd.

Solon, OH 44139

guard1.com

Stephanie Barsella, National Sales Manager

(216) 595 0890

sales@guard1.com

Guard1 is a complete system for professional facility management including: well-being checks, inmate movement and location, officer and staff duress.

Habtech Communication Inc, a division of Vipond Inc. Table #19

6360 Vipond Drive

Mississauga, ON L5T 1A1 Canada

habtech.ca

Denisa Cojocarasu, Marketing Coordinator

(905) 612 8259

Denisa.cojo@habtech.ca

Habtech integrates door control, alarms, CCTV surveillance, lighting control, guard tour and intercom into a management system with flexible architecture that can mold to any correctional facility's specifications. After 20 years in the North American correctional market, Habtech has the necessary resources and experience to perform installations and retrofits of high-security detention systems that comply with strict correctional requirements.



Hope's Windows Table #1

84 Hopkins Avenue
Jamestown, New York 14701
hopeswindows.com

Jed Dubois, National Sales Manager - Security
(716) 665 5124
jdubois@hopeswindows.com

Hope's is the leading manufacturer of fixed and operable steel and stainless steel detention windows.



Infax, Inc. Table #33

4250 River Green Parkway, Suite D
Duluth, GA 30096
infax.com

Maddie Flowers, Director of Sales
(678) 533 4025
mflowers@infax.com

Infax digital displays have been incorporated in courthouses all over North America to provide important court and wayfinding information to visitors. We work with our court customers to strategically design systems that fit the needs of each courthouse. Since entering the court market with DocketCall®, our automated docket solution, we have continued to expand our product offerings to an entire suite of solutions. Visit us at infax.com to see the future of courthouse wayfinding.



Justice AV Solutions (JAVS) Table #27

13020 Middletown Industrial Blvd
Louisville, KY 40223
javs.com

Gabe Schmitz
Regional Sales Manager
(702) 506 2493
Gabe.Schmitz@javs.com

Justice AV Solutions (JAVS) is a global leader in the planning, integration, installation, and ongoing support of audio video systems for courtrooms.



Kane Innovations Table #3

2250 Powell Ave
Erie, Pennsylvania 16506
KaneInnovations.com

Jim Lenaway, National Sales Manager
(814) 558 0737
jiml@kaneinnovations.com

As the nation's leader in security woven rod and security screens, Kane provides quality products engineered to your project.



Lift-U Division of Hogan Mfg., Inc. Table #14

PO Box 398
Escalon, California 95320
lift-u.com

Mark Ramos, Sales Manager – Architectural
Products
(209) 838 2400 x141
markramos@hoganmfg.com

LIFT-U® Division of Hogan Mfg., Inc. is the
industry leader in innovative courtroom lift design
and application engineering.



Marathon Engineering Corp Table #2

5615 2nd Street W
Lehigh Acres, FL 33971
goldmedalsafetypadding.com

George Hrunka, President/CEO
ghrunka@marathonengcorp.com

Manufacturer and installer of Gold Medal Safety
Padding that provides owners with safe, durable
and easily maintained padded environments.



Nomad AV Systems Table #7

14800 Martin Drive
Eden Prairie, MN 55344
nomadavsystems.com

Andy Morgan, Eastern Regional Sales Manager
amorgan@nomadonline.com

Nomad AV Systems provides configurable AV solutions using a thorough understanding of courtroom AV design, integration, installation and support.



Norix Group Inc. Table #13

1800 W Hawthorne Ln
Suite N West Chicago, IL 60185
norix.com

Bill Karl, VP of Sales
(630) 291 7407
bkarl@norix.com

Norix specializes in high-quality justice furniture that offers the extreme durability and safety required by intensive-use environments.



Oldcastle Infrastructure Table #24

200 Keystone Drive
Pottstown, Pennsylvania 18969
oldcastleprecast.com/region/modular-group/

Joe McKenna, Sales Manager
(215) 260 8726
joe.mckenna@oldcastle.com

We future-proof North America's infrastructure and transform communities by protecting water, enhancing communications, transporting energy, and strengthening structures. Our clear vision, powerful collaboration, and fierce drive ensure the vitality and sustainability of what is most important to us—a better planet.



Prime Coat Coating Systems Table # 29

1949 Swanson Ave.
Gurnee, IL 60031
primecoat.com

Mike Ballou, President
(847) 362 5111
mballou@primecoat.com

Prime Coat Coating Systems has been an innovator of high performance coating solutions since 1990. Our brand focuses on the design, creation and installation of unique resinous solutions in a vertically integrated platform. The results are high quality, long lasting coating solutions. We believe that if it is worth doing, it is worth doing it to last and that is our guarantee.



Professional Systems Engineering, LLC Table #16

1010 Church Rd
Lansdale, PA 19446
profsyseng.com

Thomas Pilson, Partner | Assoc. Vice President
(215) 661 1600 x104
thp@profsyseng.com

Professional Systems Engineering, LLC (PSE) is a leader in providing consulting, design, engineering, and construction services for justice facilities

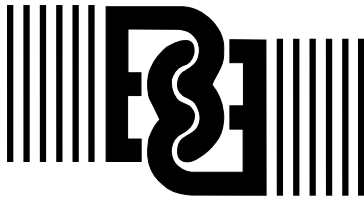


Pyrok, Inc. Table #12

121 Sunset Road
Mamaroneck, NY 10543
pyrok.com

Howie Podolsky, General Manager
(914) 777 7070
mrpyrok@aol.com

Pyrok Inc. manufactures Pyrok StarSilent, a smooth, seamless sound-absorbing plaster system for courthouses and Pyrok Acoustement acoustical plasters which have formulations for courthouse and correctional facility applications. Our new product, Vogl, is perforated sound-absorbing gypsum boards for courthouse and correctional facility uses.



R.R. Brink Locking Systems, Inc. Table #22

500 Earl Road
Shorewood, Illinois 60404
rrbrink.com

Gary Noha, Sales Manager
gnoha@rrbrink.com

R.R. Brink Locking Systems specializes in the design and manufacture of high security electromechanical and mechanical locks. We offer a full line of products designed for correctional institutions where remote control sliding cell operators and corridor doors are required. Our reputation has been established on product Innovation, quality, and workmanship.



Sherwood Windows Limited Table #8

37 Iron Street
Toronto, ON M9W 5E3
sherwoodwindows.com

Bryan Horton, Sales Manager
(416) 559 2856 ext. 232
bhorton@sherwoodwindows.com

Since 1953, Sherwood Windows Limited has been providing custom fenestration solutions for Institutional, Commercial and Industrial facilities.



Spacesaver Table #23

1450 Janesville Ave.
Fort Atkinson, WI 53538
spacesaver.com

Kate Winkler, Vertical Marketing Manager -
Architects and Designers
(920) 563 0745
kwinkler@spacesaver.com

We help optimize space and improve workflows in
new construction and renovations. Contact us to
connect with your local Spacesaver distributor.



STANLEY Security Table #4

14670 Cumberland Road
Noblesville, IN 46060
rtd-llc.com

Andrew Barker
(317) 567 0087
abarker@rtd-llc.com

STANLEY Security is the industry's leading
provider of correctional electronic systems. Since
1985, we have been providing nonproprietary,
integrated systems and have successfully
completed over 600 projects. The STANLEY
Security approach to solving our customers'
challenges has evolved over 30 years by delivering
combined service, engineering (pre and post)
and project management teams under one name:
STANLEY. This unique, unparalleled, time-proven
approach saves capital, increases efficiency, and
helps our customers reduce their total cost of
ownership.



T.L. Shield + Associates, Inc. Table #25

P.O. Box 6845
Thousand Oaks, CA 91359
tshield.com

Evelyn Southworth, Office Manager
(818) 509 8228
evelyn@tlshield.com

T.L. Shield has developed the perfect accessibility lift for use where the aesthetic is as important as superior lifting capabilities. Installed in courtrooms across the country, the Invisible Lift could be the perfect solution for your project.



TYMETAL Corp. Table #30

678 Wilbur Avenue
Greenwich, NY 12884
tymetal.com

Al Longhi
(518) 817 9398
alonghi@tymetal.com

Tymetal Corp. offers customized perimeter Security Gate and Bollard systems for high cycle and high security applications. Our no cost engineering design service provides tailored site specific CAD drawings and specifications. This engineered document service, accompanied by LEEDS Certification, insures accurate competitive bids for your client by local gate installers. Our U.S.A. manufacturing plants produce the highest quality automated security gates, turnstiles, and bollards with state-of-the-art access controls. Tymetal's Vehicular, Railroad, and Pedestrian Gates are backed by a premier Warranty and Lifetime Telephone Technical Support. Please consider us for your next Gate and/or Bollard project!



Wallace Perimeter Security Table #9

115 Lowson Crescent
Winnipeg, Manitoba R3P 1A6
wallaceperimetersecurity.com

Stephanie Olynick, National Sales Director
solynick@wallaceperimetersecurity.com

Wallace Perimeter Security manufactures automatic sliding, folding and pedestrian gates, woven wire partitions and high security fencing solutions.



Willoughby Industries Table #18

5105 West 78th Street
Indianapolis, IN 46268
willoughby-ind.com

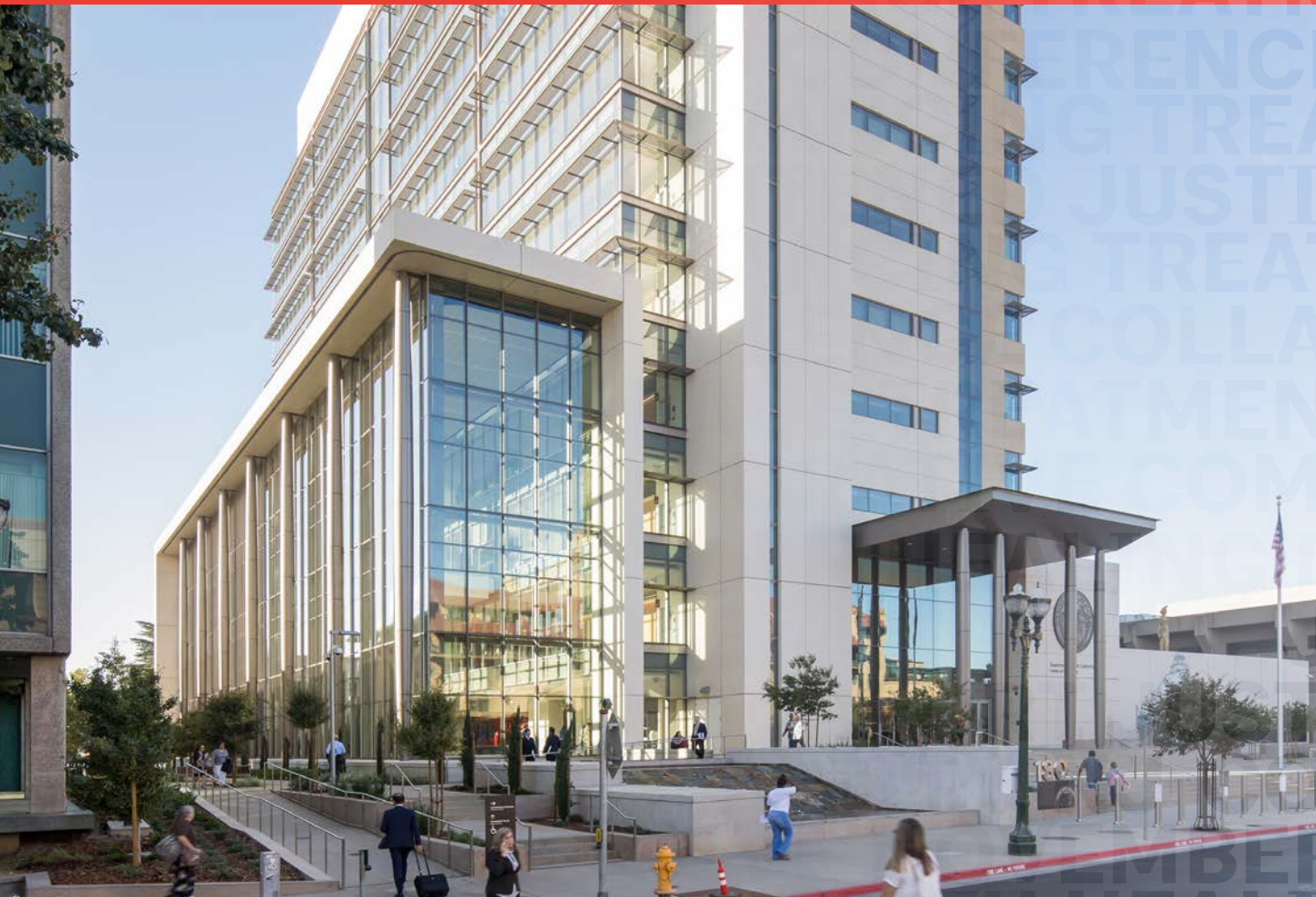
Rick Lewis, National Sales Manager
(317) 407 8103
rlewis@willoughby-ind.com

Willoughby Industries is the worldwide leader in the manufacturing of stainless steel security plumbing fixtures, showers, detention accessories, and electronic water saving controls.



Superior Court of California - San Diego
San Diego

Architect **Skidmore, Owings & Merrill LLP**
Photo credit **Bruce Damonte**



The Superior Court of California, County of San Joaquin Courthouse
Stockton, CA

Architect **NBBJ**

Photo credit **Sean Airhart**



REIMAGINE CHALLENGE COLLABORATIVE
SUPPORT ENGAGE TREATMENT JUSTICE
RACE AAJ CONFERENCE 2018 ENLIGHTENED JUSTICE
ADVANCING TREATMENT JUSTICE
ENLIGHTENED JUSTICE: DISRUPTING ADVANCING TREATMENT
CHALLENGE COLLABORATIVE
SUPPORT ENGAGE TREATMENT JUSTICE
COLLABORATIVE COMMUNITY
DIVERSION HEALING DISRUPT
ENGAGE TREATMENT JUSTICE
TMENT SUPPORT **SPONSORS** US
NE JERSEY CITY, NJ COMMUNITY
COLLABORATIVE NOVEMBER 14-17 H
JUSTICE HEALTH HEALING EFFECTIVE
AGINE CHALLENGE COLLABORATIVE
ENGAGE TREATMENT JUSTICE
DISRUPTION REIMAGINE CHALLENGE



Travis County Medical Examiner's Office
Austin, TX

Architect **SmithGroup**
Associated Architect **Barnes Gromatzky Kosarek Architects**
Photo credit **Winqvist Photography**

Thank you!

Our generous sponsors and partners



AIA
New York

Wifi sponsor

ARCONAS

Wifi access instructions

- Access your wireless network connections and select: @Hyatt_Meeting
- Connect to a PUBLIC webpage: Hyatt.com, Google.com, Amazon.com etc. (VPN restrictions & corporate intranet landing pages may delay this step)
- The ENCORE Splash Page will appear, enter:
username Arconas
password Arconas

Lanyard sponsor

NORR



Save the date! AAJ 2019

CROSSING BORDERS: COMMUNITY-FOCUSED JUSTICE INTERVENTIONS | OCTOBER 22-26, 2019

The US Grant, A Luxury Collection Hotel, San Diego, 326 Broadway, San Diego, CA 92101 USA

In recent years, the Academy of Architecture for Justice has gathered to discuss architecture and social justice, interdisciplinary practice, and most recently enlightened approaches to mental health and treatment.

In 2019, we will come together in San Diego to have a conversation about communities, and how architecture can be supportive of initiatives that address longstanding social fractures and move us forward, together, as we take on new and increasingly difficult challenges.

Alternatives to detention, innovative courts focused on therapeutic or restorative justice, increased focus on outward facing community services, and community policing are all reshaping the way consider the design and impact of justice facilities.

Law enforcement priorities are too often impacted by a resource limited environment, in which the competing demands of addiction, homelessness, and mental health crises have made policing more varied and challenging than ever.

In San Diego, we will meet in the shadows of prototypical sections of a vast physical barrier, inherently a symbol of division and difference. With the wall as a backdrop, we will also consider the unseen borders that often divide our communities in highly visible ways.

The most notorious social divides in our country: Delmar Boulevard in St. Louis, 9th Avenue in Louisville, Troost Avenue in Kansas City, and 8 Mile Road in Detroit are all examples of how underserved communities struggle as essential resources are diverted, and where a lack of trust in the justice system has become pervasive. In San Diego, more than five million people live together at the border, under very different circumstances. How we, as planners and designers, address these inequalities will have a profound impact on our future, and provide an opportunity for innovation related to social impact that has become an essential component of architectural practice.

Please, come and join us in San Diego, where we will explore opportunities that arise when we choose to consider our borders as what unite, rather than divide us.

Gregory Cook, AIA
2019 AAJ Leadership Group Chair



Will County Courthouse

Joliet, IL

Architect **Wight & Company**

Associated Architect **HOK**

Photo credit **Wight & Company**



Sonoma County Adult Detention Behavioral Health Unit
Santa Rosa, CA

Architect **DLR Group**

Photo credit **DLR Group**

Academy of Architecture for Justice

an **AIA** Knowledge Community



**The American
Institute
of Architects**

1735 New York Avenue, NW
Washington, DC 20006

aia.org

© 2018 American Institute of Architects