

From a Centralized Nursing Unit to a Decentralized Nursing Unit with Academic Learning Space

December 8, 2020

Kelly Baumer, PT, MBA

Mike Schnaare, AIA, NCARB





The American
Institute
of Architects

Academy of
Architecture for Health
an AIA Knowledge Community

From a Centralized Nursing Unit to a Decentralized Nursing Unit with Academic Learning Space

December 8, 2020

Moderated by Michelle Yates, EDAC, FSMPS





**The American
Institute
of Architects**

Academy of
Architecture for Health

an **AIA** Knowledge Community

Case Study

As part of the Academy's multi-channel, on-line approach, these sessions are intended to introduce members of healthcare-centric practices, in all stages of professional development, to case studies of relevant content, providing access to data and critical analysis of elements key to the project's success.



**The American
Institute
of Architects**

Academy of
Architecture for Health

an **AIA** Knowledge Community

Copyright notice

This presentation is protected by US and International Copyright laws. Reproduction, distribution, display and use of the presentation without written permission of the speaker is prohibited.

© The American Institute of Architects (2020)



**The American
Institute
of Architects**

Academy of
Architecture for Health

an **AIA** Knowledge Community

Compliance Statement

“AIA Knowledge” is a Registered Provider with The American Institute of Architects Continuing Education Systems (AIA/CES). Credit(s) earned on completion of this program will be reported to AIA/CES for AIA members. Certificates of Completion for both AIA members and non-AIA members are available upon special request.

This program is registered with AIA/CES for continuing professional education. As such, it does not include content that may be deemed or construed to be an approval or endorsement by the AIA of any material of construction or any method or manner of handling, using, distributing, or dealing in any material or product.



**The American
Institute
of Architects**

Academy of
Architecture for Health

an **AIA** Knowledge Community

AIA/CES Reporting Details

Your CES credits from this event will be automatically reported given your engaged attendance during the entire event today.

If you are watching in a group setting and have multiple people in the room, please make sure the person who registered for the course, includes your name and AIA member number in their post webinar survey.

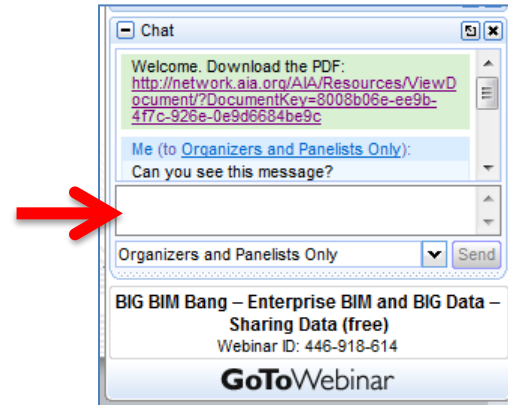
We encourage all registrants to fill out the post webinar survey. Your feedback is important and informs us of future webinar topics to better meet listener needs.

Questions?

Submit a question to the moderator via the chat box.

Content-related questions will be answered during the Q&A portion, at the end of the presentation, as time allows. Any questions not answered during Q&A, will be answered and posted online within two (2) weeks.

Tech support questions will be answered by AIA staff promptly.





**The American
Institute
of Architects**

Academy of
Architecture for Health

an **AIA** Knowledge Community

Kelly Baumer, PT, MBA
SSM Health Saint Louis University Hospital



Mike Schnaare, AIA, NCARB
Lawrence Group





The American
Institute
of Architects

Academy of
Architecture for Health
an AIA Knowledge Community

Agenda

- Project Background
- Existing Care Models
- The Final Design
- Lessons Learned
- Q&A



Saint Louis University Hospital

Project Background

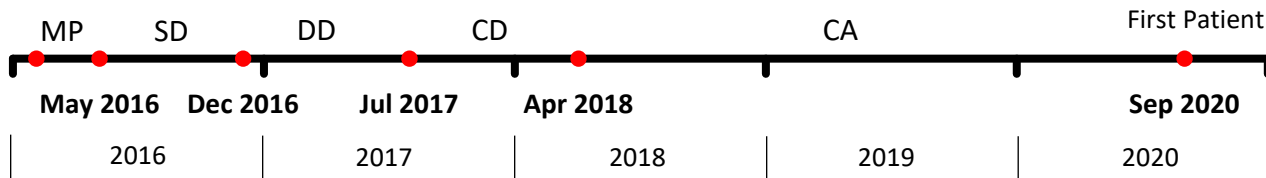




Project Timeline

Jan 2016

Design Team
Selected



Owners: **SSM Health, Saint Louis University**
Architecture, Interior Design, Landscape Architecture:
Lawrence Group
Architecture, Planning, Specialty Lighting: **HGA**
Civil: **David Mason & Associates**
Structural: **KPFF**
MEP/FP: **IMEG**

Program Management, Equipment: **Northstar**
Construction: **Alberici**
Mechanical/HVAC: **Murphy, C&R**
Electrical: **Guarantee, Kaiser**
Plumbing: **Corrigan, Franklin**
Fire Protection: **Ahern**



**The American
Institute
of Architects**

Academy of
Architecture for Health
an AIA Knowledge Community

Program Size

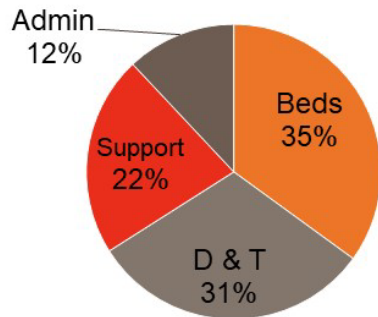
Hospital	617,980 BGSF
<u>ACC</u>	<u>207,564 BGSF</u>
Total	825,544 BGSF



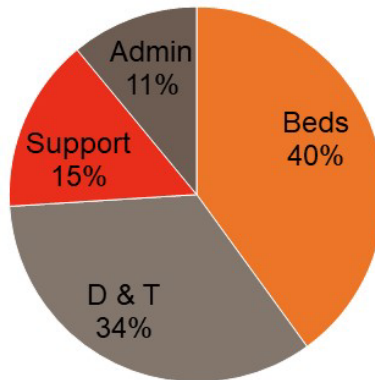


Program Size

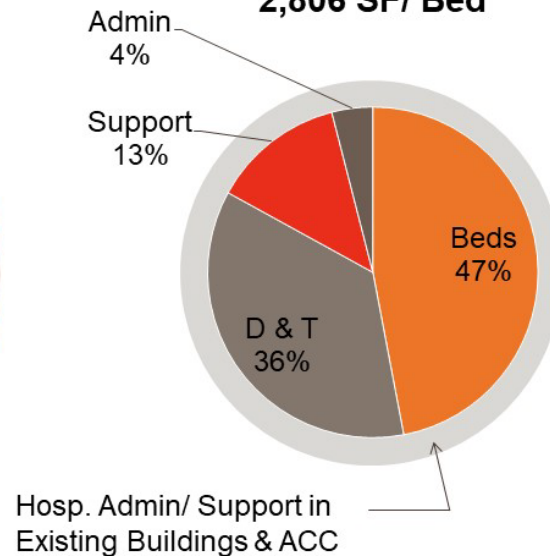
Community Hospital
2,000 SF/ Bed



Academic
3,000 SF/ Bed



New Hospital
2,806 SF/ Bed

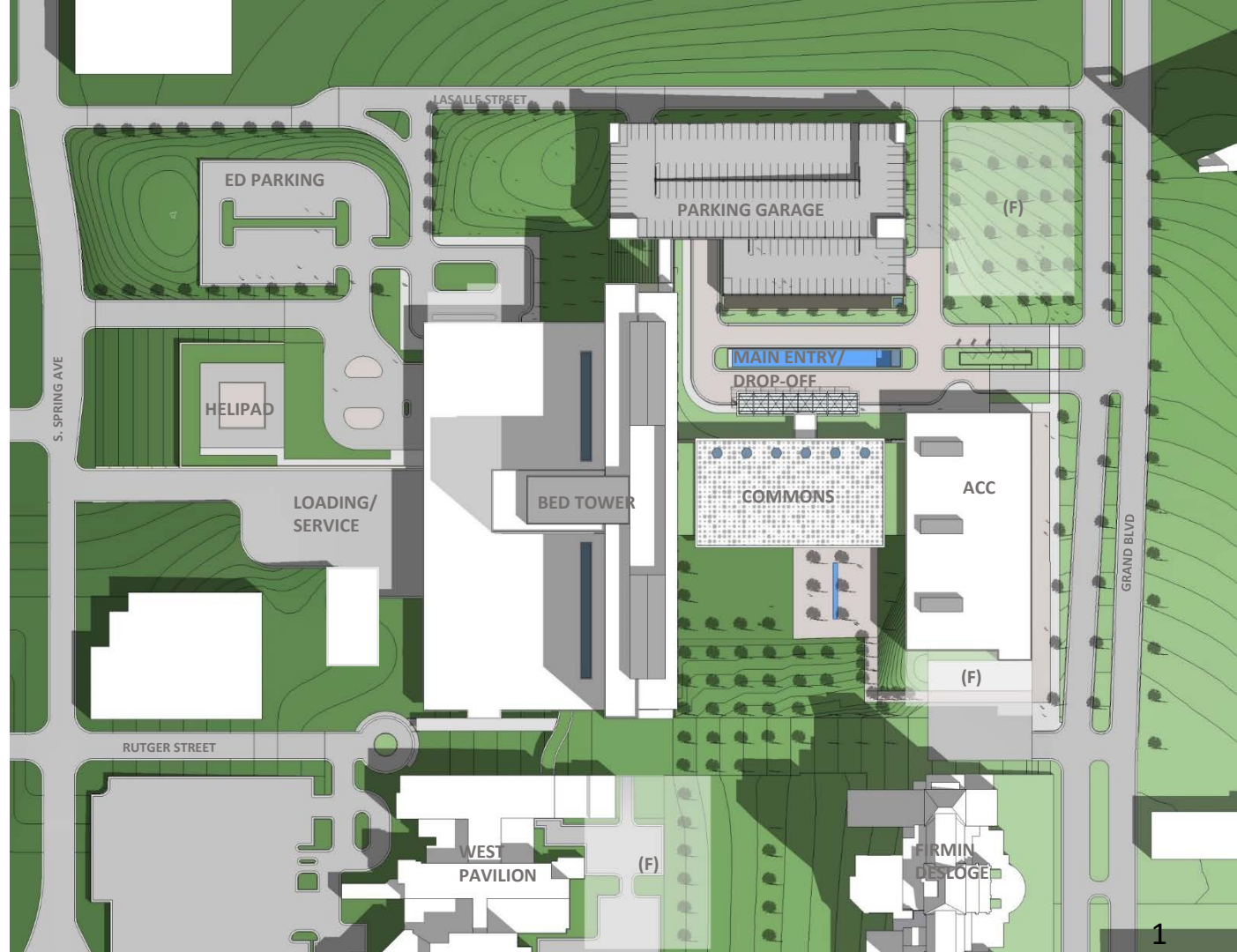


Academic Medical Center

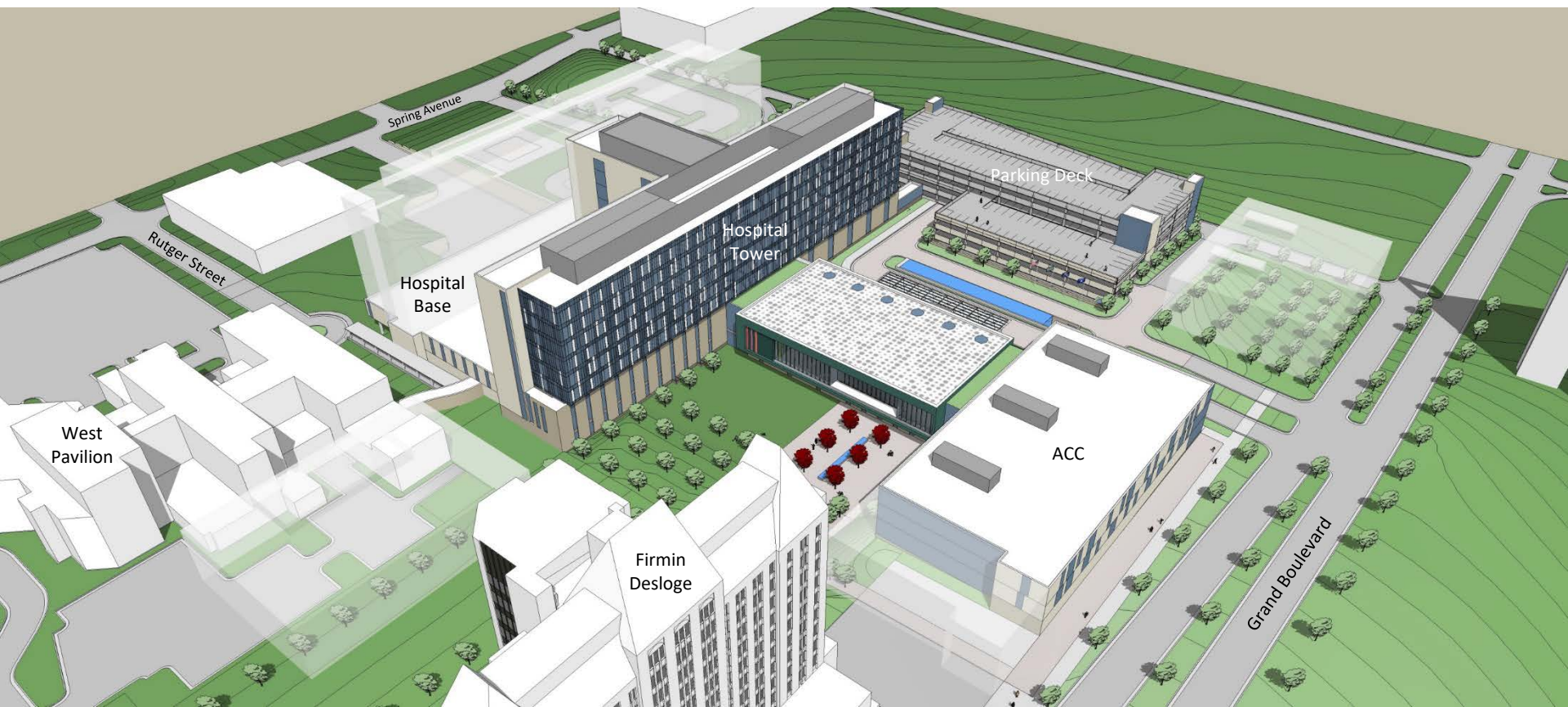
- 10 Level Hospital
- ACC: 4 levels
- Parking garage: 857 spaces
- ED parking : 100 spaces

17 Acres

316 Beds



Campus View



Saint Louis University Hospital

Existing Care Models





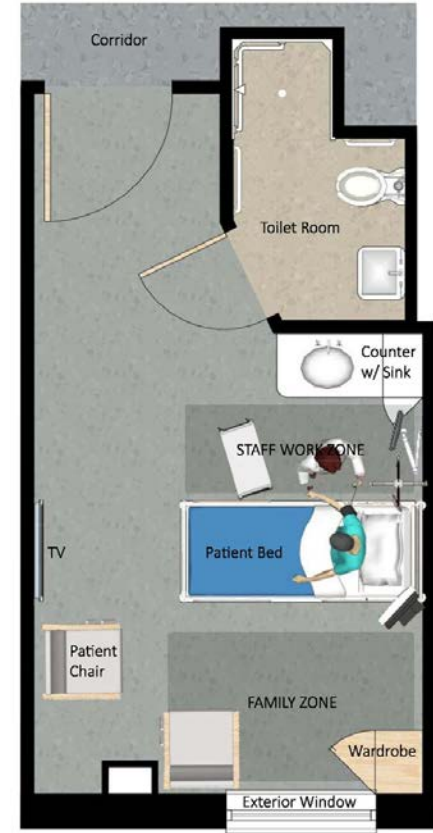
The American
Institute
of Architects

Academy of
Architecture for Health
an AIA Knowledge Community

SSM Patient Rooms (2006)



Room: 220 SF
Toilet: 40 SF
Total SF: 260 SF





The American
Institute
of Architects

Academy of
Architecture for Health
an AIA Knowledge Community

SSM Patient Rooms (2009)



Room: 279 SF
Toilet: 55 SF
Total SF: 334 SF





The American
Institute
of Architects

Academy of
Architecture for Health
an AIA Knowledge Community

SSM Patient Rooms (2014)



Room: 248 SF
Toilet: 36 SF

Total SF: 284 SF





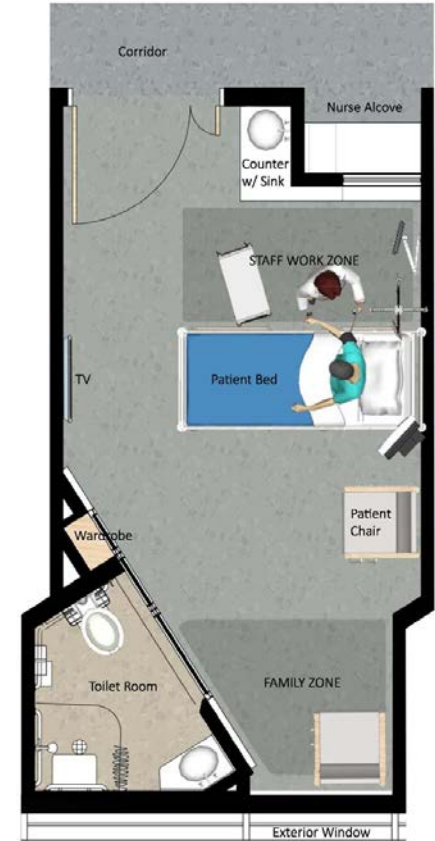
The American
Institute
of Architects

Academy of
Architecture for Health
an AIA Knowledge Community

SSM Patient Rooms (2017)



Room: 225 SF
Toilet: 35 SF
Total SF: 260 SF



Saint Louis University Hospital

The Final Design



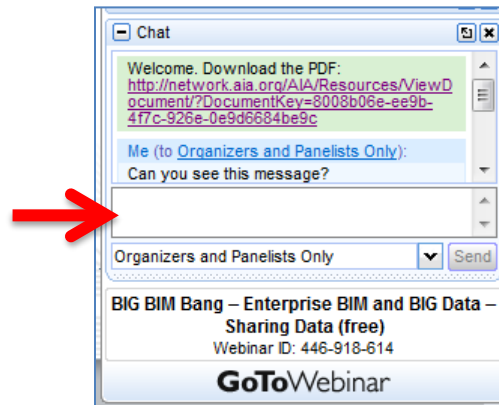


The American
Institute
of Architects

Academy of
Architecture for Health
an AIA Knowledge Community

Question Reminder

Submit your questions and comments
via the chat box.

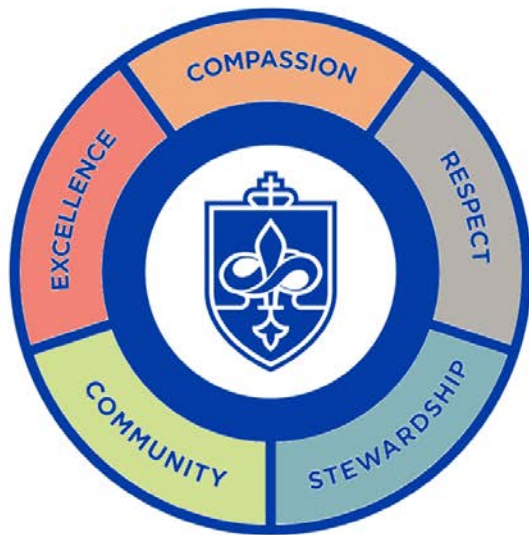




**The American
Institute
of Architects**

Academy of
Architecture for Health
an AIA Knowledge Community

Guiding Principles



Develop the campus facilities and support the missions of exceptional health care services, world class health professionals education and research.

**Excellence
Compassion
Community
Respect
Stewardship**



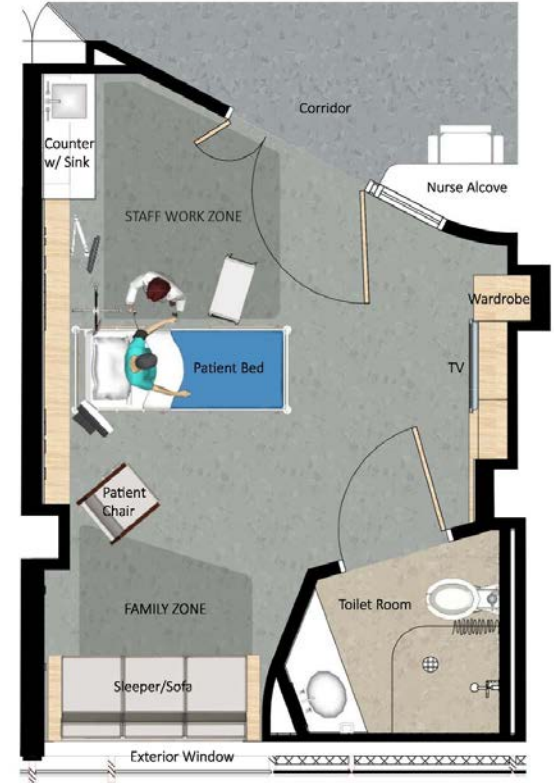
The American
Institute
of Architects

Academy of
Architecture for Health
an AIA Knowledge Community

SSM SLU Hospital



Room: 244 SF
Toilet: 37 SF
Total SF: 281 SF





The American
Institute
of Architects

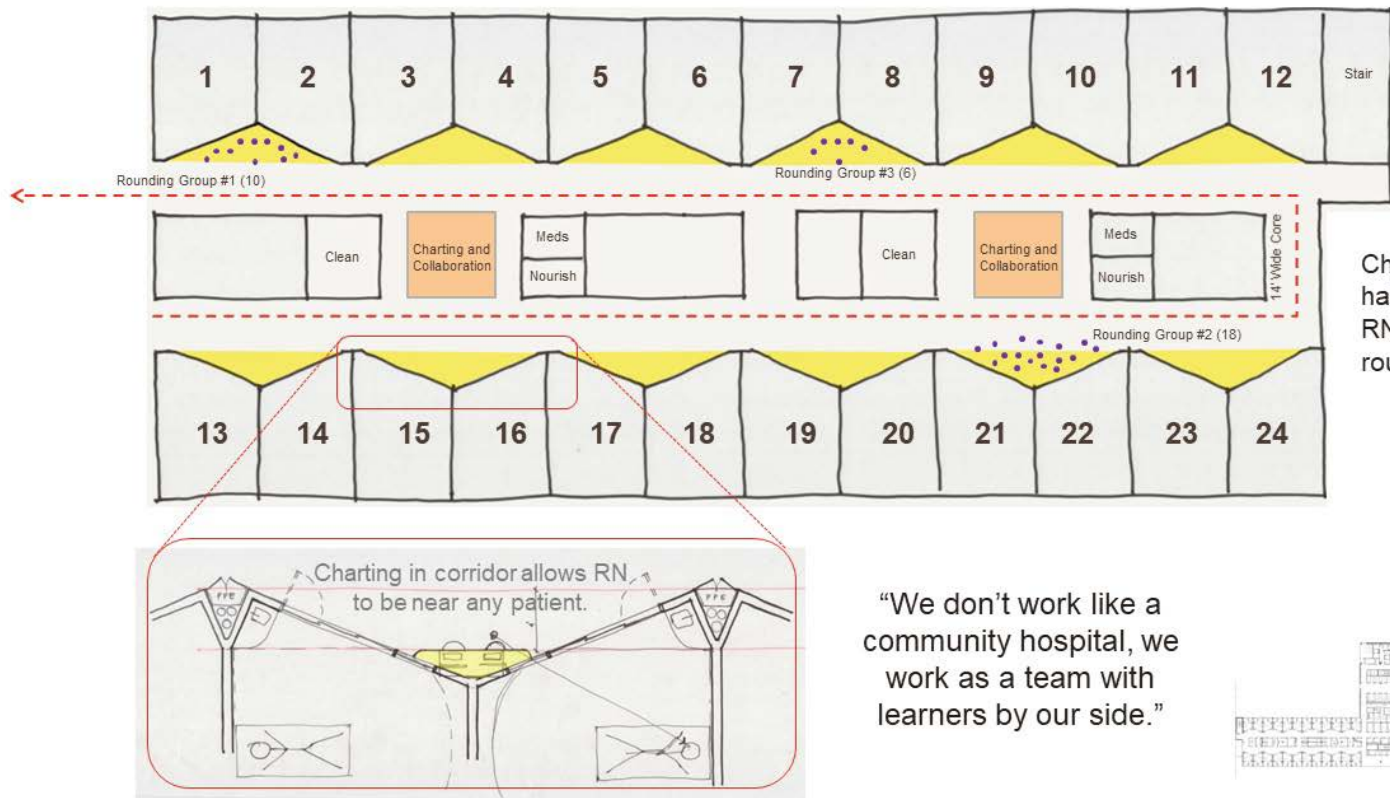
Academy of
Architecture for Health
an AIA Knowledge Community

Existing Care Models at SLU: Planning for a Better Experience

- Current State of Rounding Experience
 - Disruption
 - Disengagement
- Lack of visibility to patients







Charting in the
hall embeds the
RN with the
rounding teams

“We don’t work like a
community hospital, we
work as a team with
learners by our side.”



Typical Unit



Mirrored Rooms

Human Experience

- Mirrored rooms may increase sound transmission between headwalls vs same handed room.
- Countermeasures will be required to mitigate this issue.

Clinical Outcomes

- Mirrored rooms allow standardization of the headwall. Research has shown this is key to impacting patient safety.

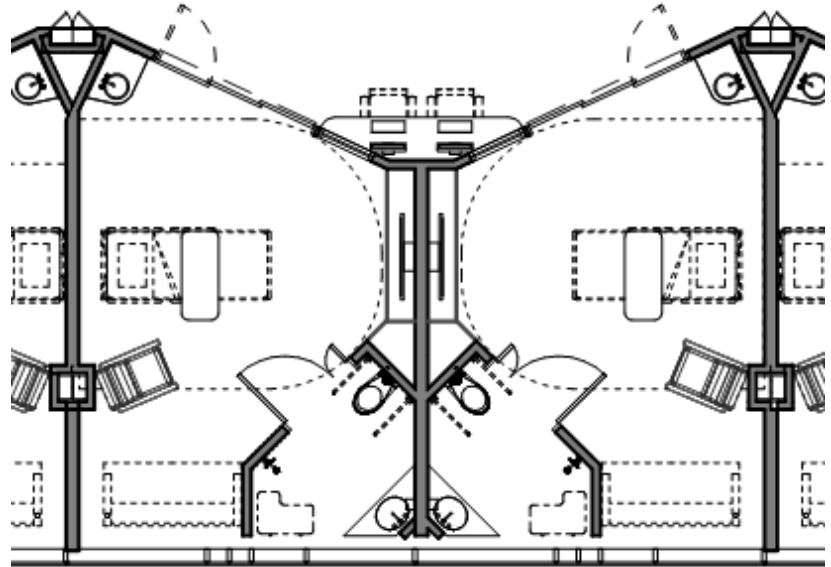
Operational Efficiency

- Standardization (even if mirrored) reduces cognitive load if staff can see the patient care environment upon entry into the room.



The Final Design: Rounding & Staff Work

- Alcoves to support rounding
- Mirrored rooms
- Corridor charting
- Two collaboration hubs in each 24-bed unit





The American
Institute
of Architects

Academy of
Architecture for Health
an AIA Knowledge Community

Full-scale Mock Ups





The American
Institute
of Architects

Academy of
Architecture for Health

an AIA Knowledge Community

The Final Design: Specialty Patient Populations

- Deployed step-down beds
- Specialty wards for Trauma, Neurology and Medical
- Created ACE unit (including 2 specialized delirium spaces)











- Teaching spaces on each floor to support
- Requirement for dedicated documentation space
- Researched best in class academic medical centers
 - 1000+ SF dedicated education space/acute care nursing unit
 - AMC benchmark range is 780 SF – 1,290 SF/ nursing unit



| Saint Louis University Hospital

Lessons Learned



Saint Louis University Hospital

Q & A





The American
Institute
of Architects

Academy of
Architecture for Health

an AIA Knowledge Community

CES Reminder

The URL to the webinar survey <https://www.research.net/r/AAH2010> will be emailed to you or the individual who registered your site.

The survey closes **Friday, December 11th** at 12:30am ET.

For questions, please email knowledgecommunities@aia.org



The American
Institute
of Architects

Academy of
Architecture for Health
an **AIA** Knowledge Community

Join the Academy of Architecture for Health

www.aia.org/aah

AIA KnowledgeNet

[AAH Home](#) • [Discussion](#) • [Library](#) • [Blogs](#) • [Events](#) • [Directory](#) • [Participate](#) • [Communities](#) •

SEARCH



Academy of Architecture for Health

an **AIA** Knowledge Community

[AAH Board/Committees](#) | [Components](#) | [Webinar Resources & Archives](#) | [Healthcare Design Awards](#) | [Pillars of Health Care Architecture](#) | [Member List](#) [Twitter](#) [LinkedIn](#)

Edit Carousel



INTERNATIONAL SUMMIT & EXHIBITION ON
HEALTH FACILITY PLANNING, DESIGN & CONSTRUCTION

MARCH 17-20, 2019 | PHOENIX, AZ

Join this knowledge community >

About the Academy

Announcements [Add](#)

U40 List: Healthcare Design's Best Under 40 [✓](#) [✗](#) [B](#)

The U40 List is nomination oriented recognition to celebrate individuals making a significant contribution to the advancement of health facilities design. Each year up to two individuals will be selected to have their names added to the distinguished U40 List. The nominees will receive a travel stipend to attend the Summer Leadership



**The American
Institute
of Architects**

Academy of
Architecture for Health
an AIA Knowledge Community

Upcoming Webinars

Date	Series	Topic
1/12	Beyond the Basics	This Session is a "Disaster"

Dates & topics are subject to change

