



Tapping a Community's Soul and Spirit: Tolleson, AZ Police and Court Center

Thursday, October 11, 2012
3:30-5:00pm

Larry Rodriguez
Tolleson Chief of Police

Don Wertzberger
Director of Public Safety Consulting, 720 design

Brian Meade
Design Director, Dewberry Architects

Presentation Agenda

- Introductions
- Community History and Ties
- Past Conditions and Establishing Need
- Design Process and Collaboration
- Community Pride
- Efficient Design and Planning Details

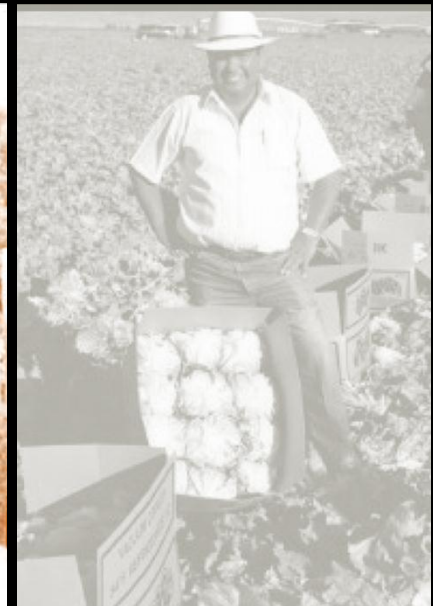




Community History and Ties

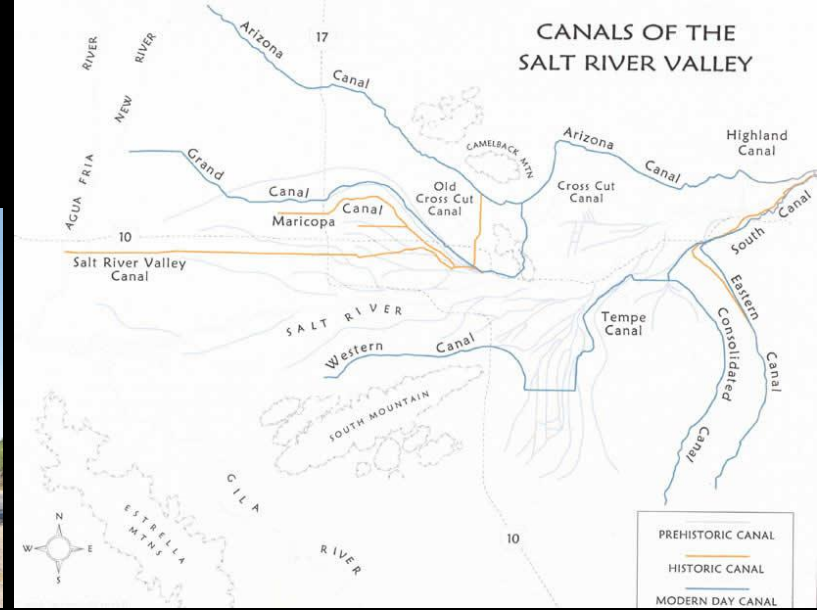


(video 1)



Community History

- canals

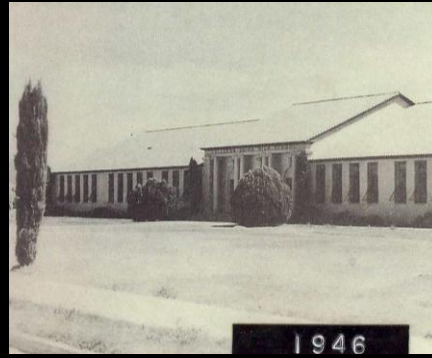


- agriculture



Community History

- 1927 High School
- Van Buren Street corridor



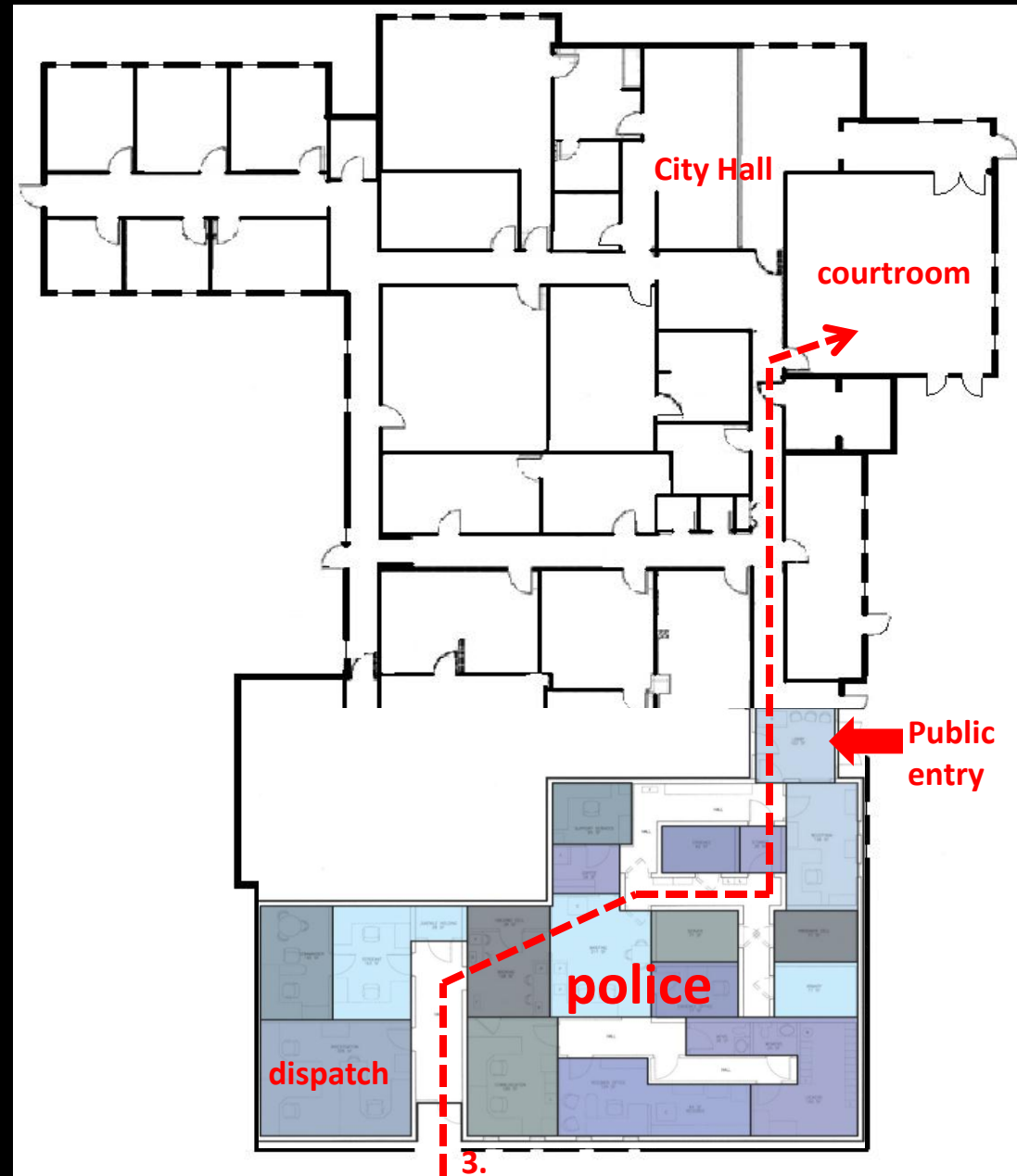
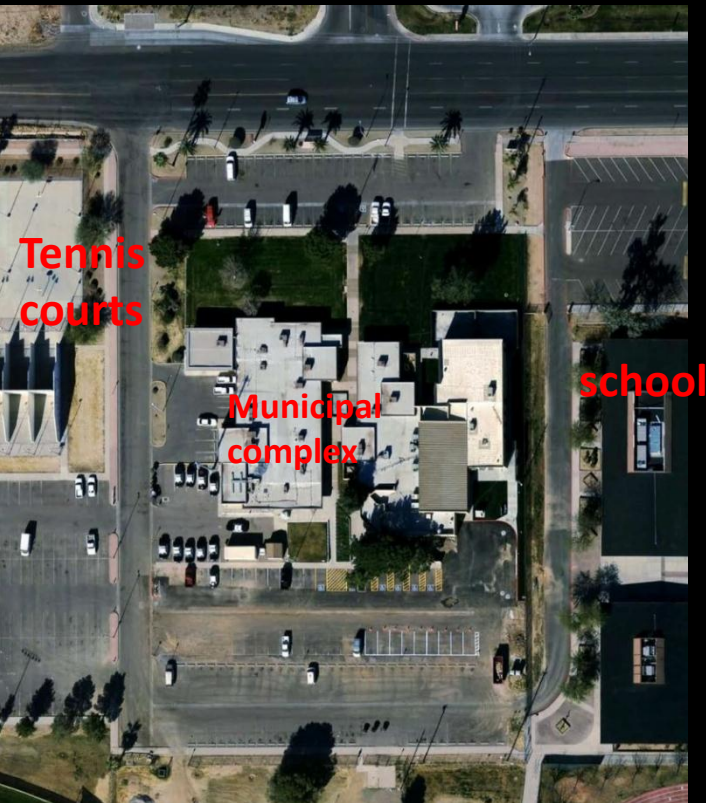
Past Conditions and Establishing Need



(video 2)

Old Building

1. 4350sf (needed 17,000sf +/-)
2. Municipal Courts need (5,000sf)
3. Traffic congestion with school proximity
4. Bad flow of prisoners through building



The “need” for a new PD: growth in community raises demands for better services:

- Residential population= 6520
- Work Force population = 20,000 (16 Fortune 500 Companies)
- 05 | 2001 Bond Authorization (\$3.5M)
- 12 | 2007 Public Safety Sales Tax approved
- 06 | 2007 Needs Assessment study begins



Design Process and Collaboration



(video 3)



Critical Success Factors

- Needs Assessment Study



Critical Success Factors for Project:

Sense of Economy

Efficient use of programmed space • Efficient building envelope

Sustainability

Minimize energy use • Environmentally sensitive materials • Waste Reduction

Tolleson Aesthetic

New Civic Architecture can add to Community Identity • Material Inspirations from Tolleson Union High School

Response to Municipal Campus Master Plan

Response to off-site / City Development

Optimum Adjacencies

Staff/ Public/ Adult & Juvenile Prisoner Separation • Patrol Daily Triangle • Public Entry Points

40 Year Building

Sites explored

- 5 sites studied
- First 3 sites centered around existing campus

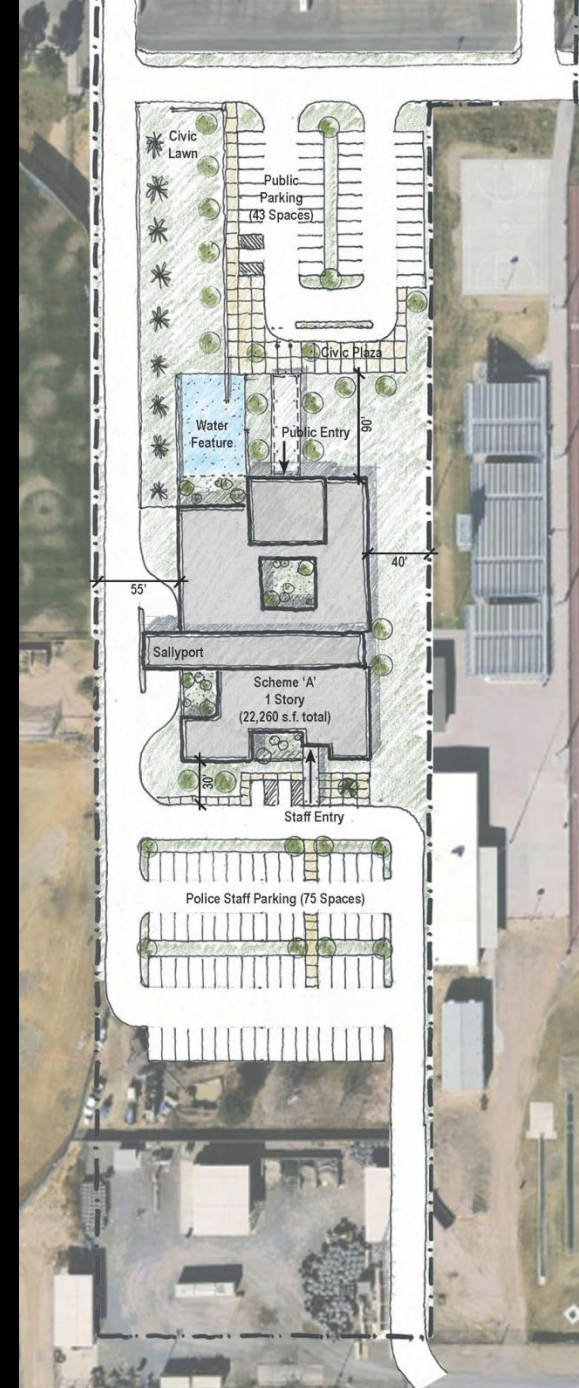
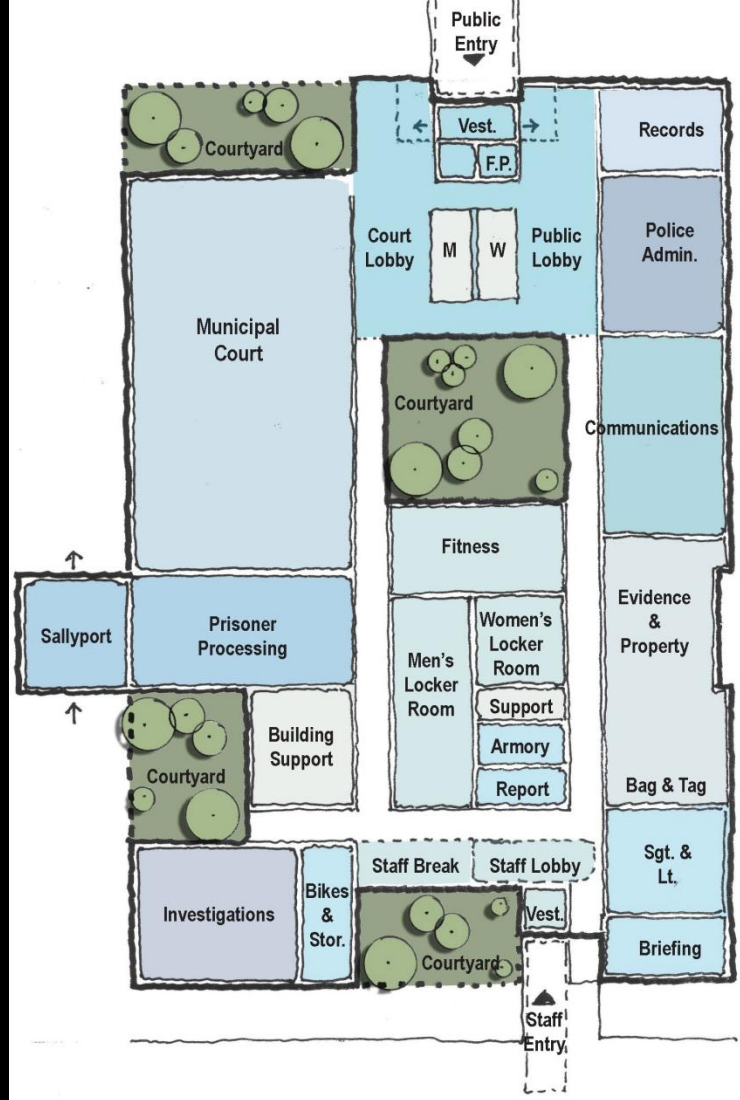


Site A: (Dec 2007)

- Low civic visibility
- Surrounded by school fields
- Shared vehicle circulation with school creates congestion

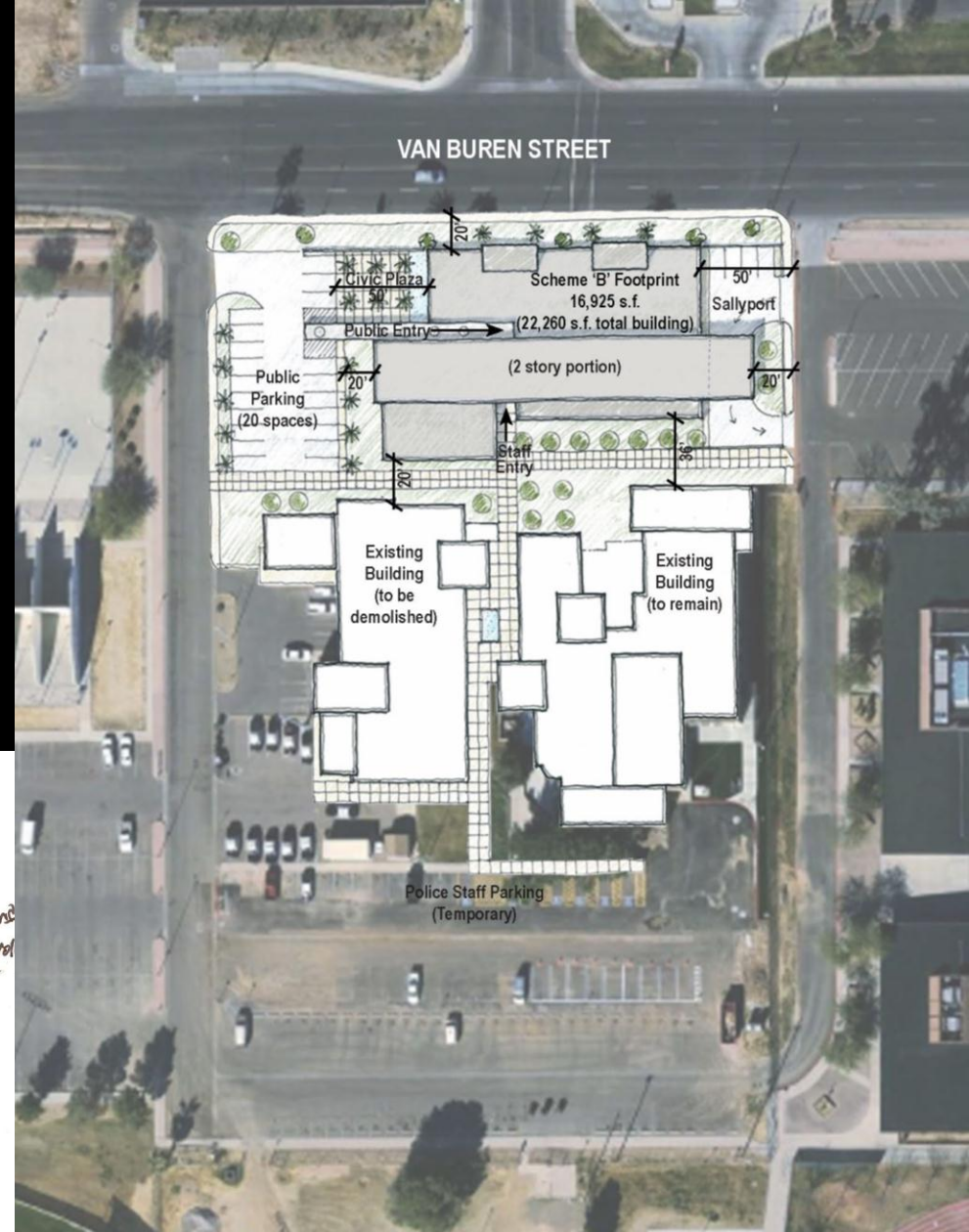
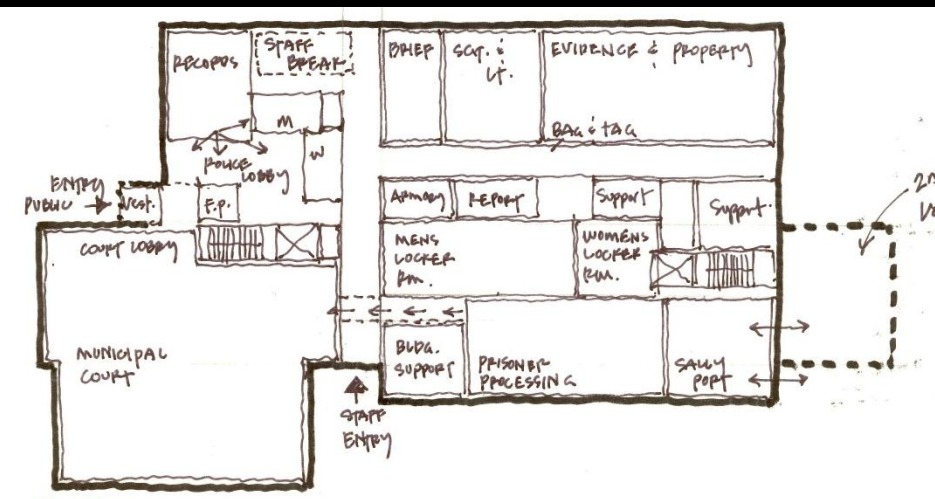
Planning issues:

- Compact design = cost savings
- Goals for natural day lighting via courtyards
- Public and staff entries at opposite ends with separated parking lots.
- Two public lobbies



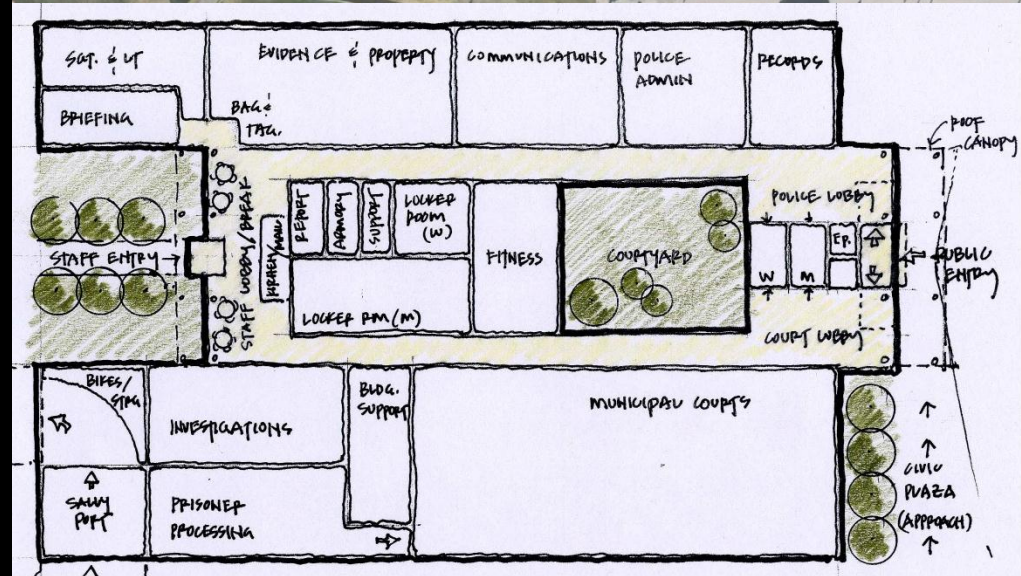
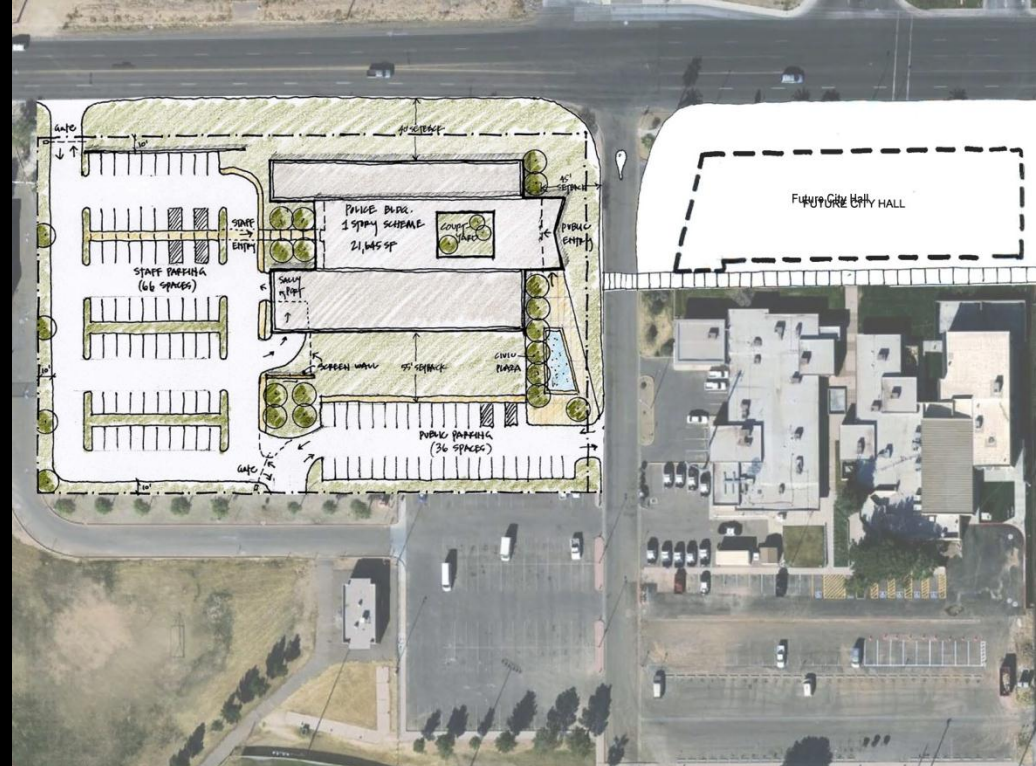
Site B: (Jan 2008)

- High civic visibility
- Shared vehicle circulation with school creates congestion
- Limited on-site parking
- Two story scheme
- Existing public library views would be blocked



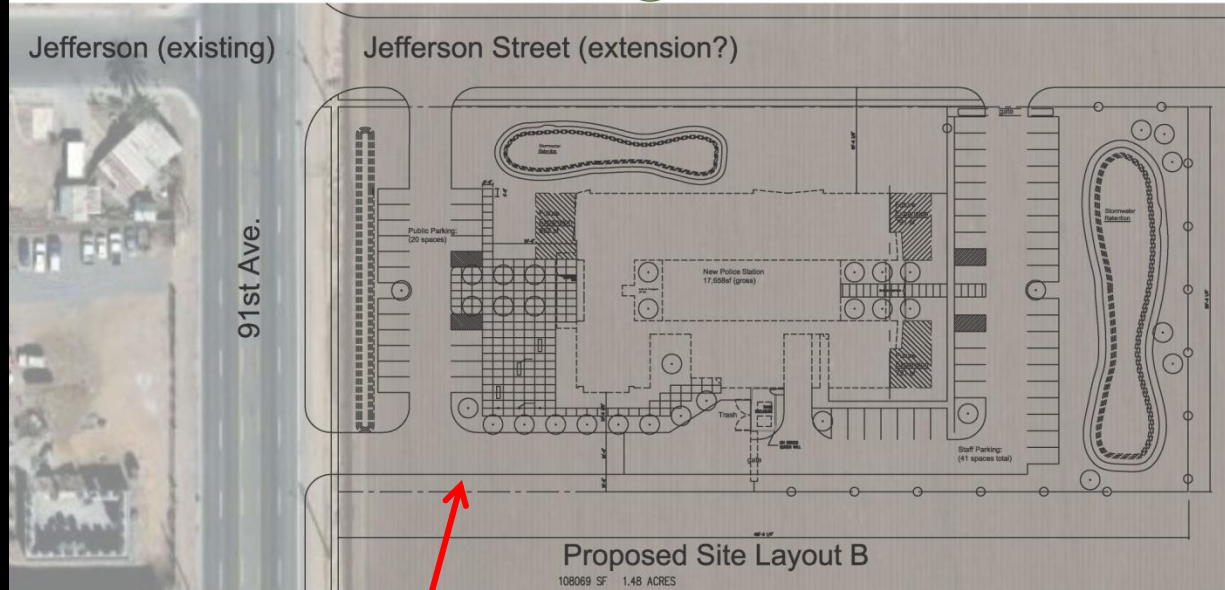
Site C: (Jan 2008)

- High civic visibility
- Master planning opportunity with new city hall to the east
- Shared vehicle circulation with school creates congestion
- Limited on site parking
- Existing public library views would be blocked



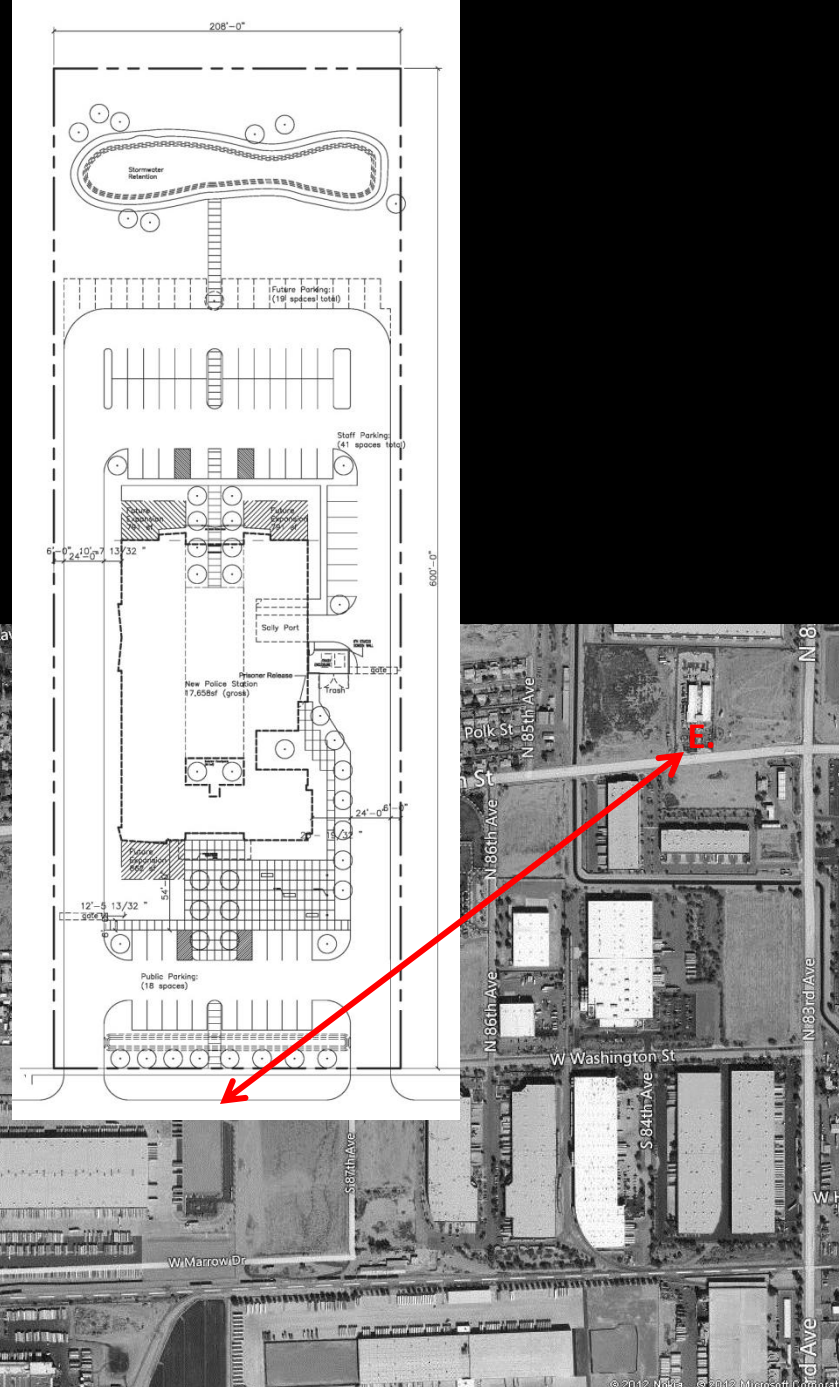
Site D: (Aug 2008)

- Low civic visibility – 4 blocks south of Van Buren
- Would need to extend Jefferson Street
- 1.5 acre site



Site E: (Nov 2008)

- High civic visibility on Van Buren Street
- At eastern gateway into community
- Good land deal
- 2.8 acre site
- Less than ideal narrow site with n-s orientation



- Influence of Tolleson Union High School (1927)



Sonic Drive In Restaurant



Saguaro Manufacturing



Happy Garden Chinese Restaurant



Family Dollar Store



Tolleson Plaza Strip Mall



Tolleson City Center Development



Tolleson Union High District Building



City Hall, City Court, Police



Continuing Education Academy



Public Library, Senior Center



Tolleson Union High Classroom Building



Old Tolleson Union High Classrooms & Community Center (c. 1927)



Van Buren Street Architecture Analysis

Context: Material influences that resonate with the community

- Stucco and Terracotta



Old Tolleson Union High School (1927)



Stucco

Honoring Our Past
Vernacular inspiration - contemporary interpretation ...

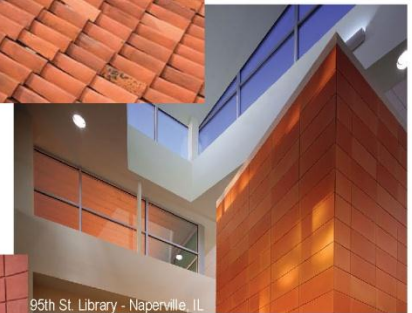
Terracotta



Stucco Precedents



ECEC - Phoenix, AZ



95th St. Library - Naperville, IL



Heard Museum West Annex - Surprise, AZ



Positioning Our Future



Material Inspiration

0' 10' NTS

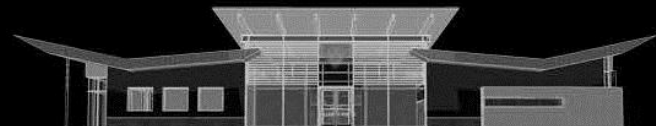
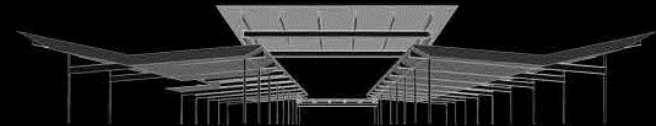
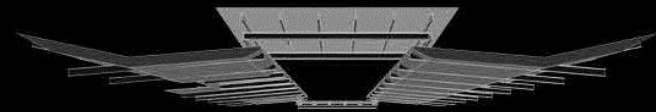
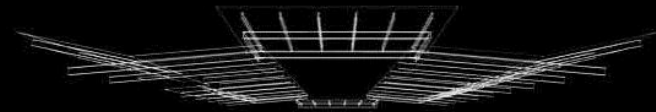
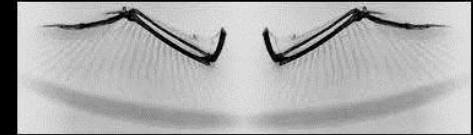
Context: Vernacular form influences

- Shed roofs of packing facilities
- Exposed structural elements



Context: Symbolic forms

- “vol” symbol – a pair of outstretched wings
- Wings can also symbolize speed, protection, justice, freedom.
- Wings on the US Great Seal symbolizes courage & strength.
- Winged roof forms can become ideal symbols for justice facilities.



evolution of winged building form



Design Process:

- Early public entry studies

April 2008



May 2008



Design Process:

- May 2008 (east-west orientation on site C)



- May 2008 (18,300sf building with no courts)
- Internal courtyard

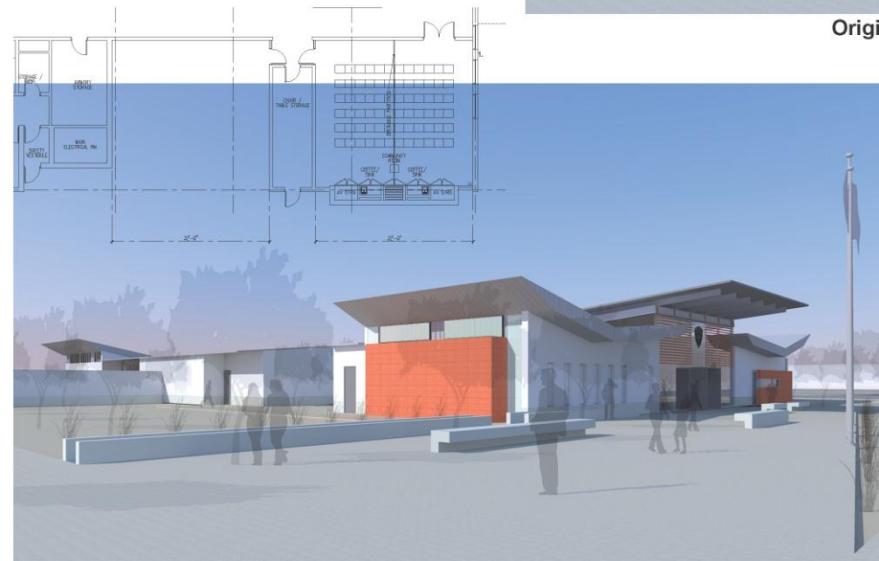


Design Process:

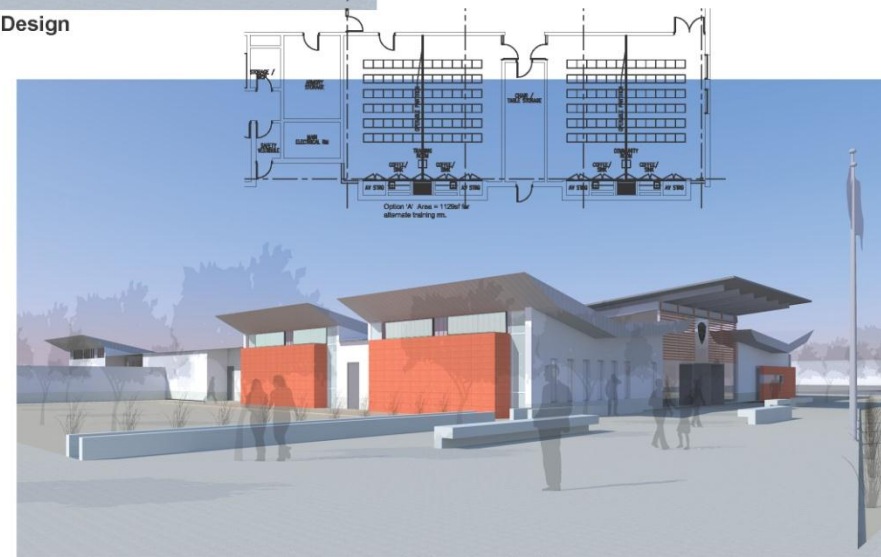
- July 2008 (alternate training / community room options to side)



Original 5.23.2008 Design



Proposed Alternate A: Phase 1



Proposed Alternate A: Phase 2

Design:

- Creating public entries that are inviting & transparent



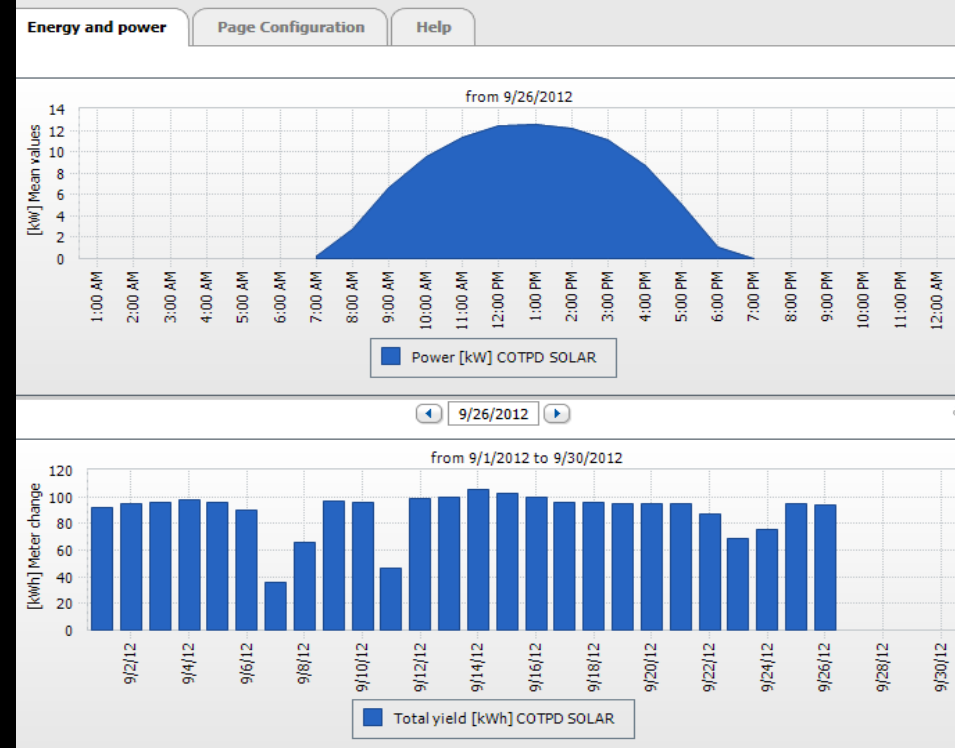
Design:

- Creating staff entries that are inviting & transparent



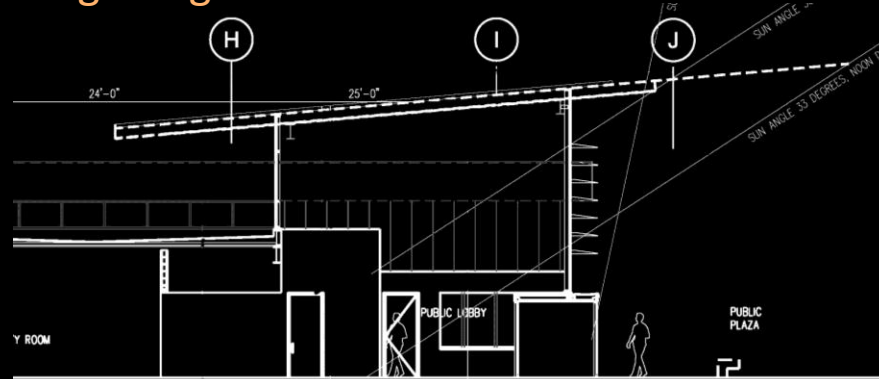
Sustainability: solar energy

- Photovoltaic solar panels on parking shade structures
- Monitor in public lobby displays energy produced.
- State of AZ Dept of Commerce Sustainability Grant
- Building achieved LEED Silver rating



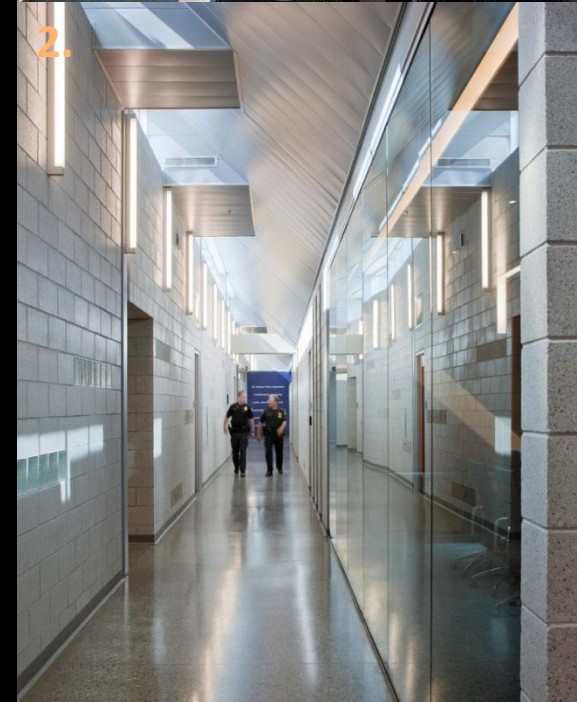
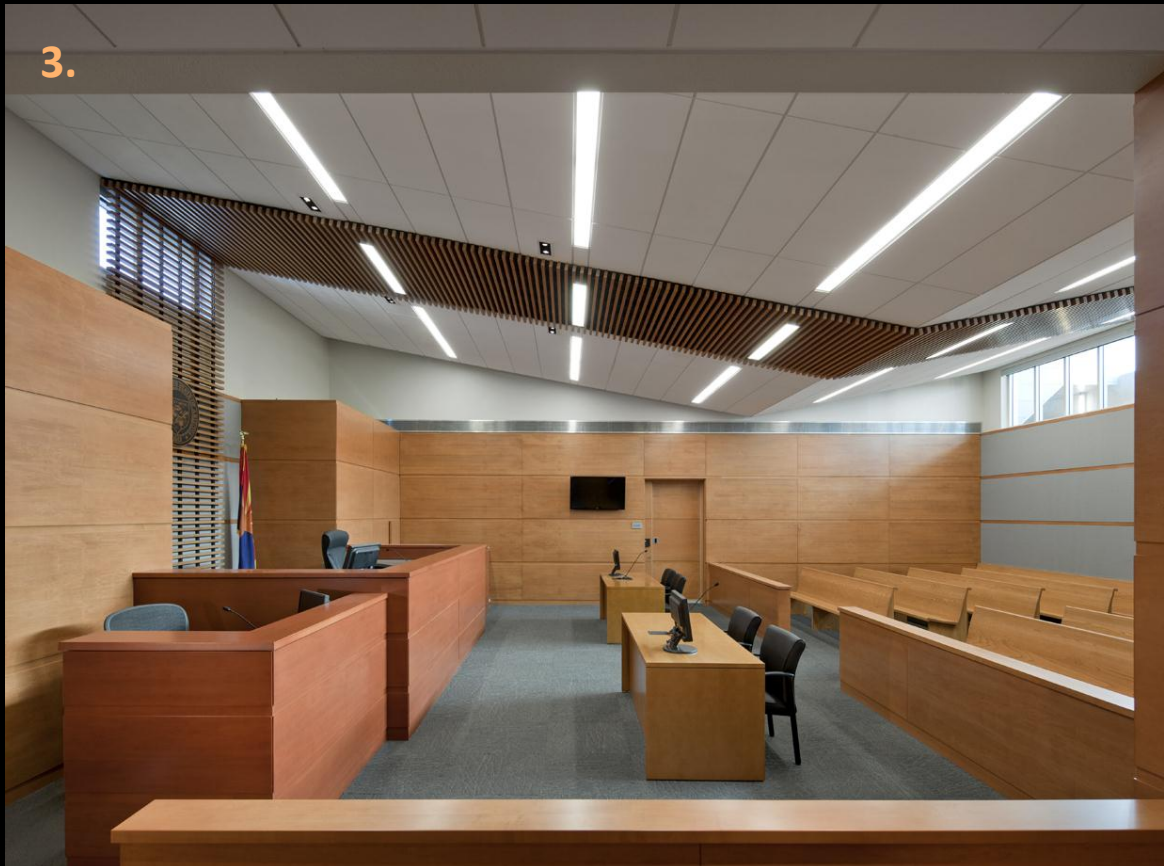
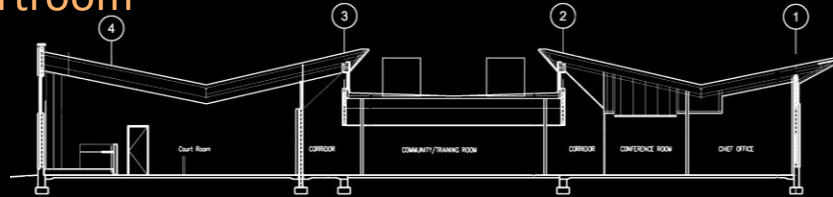
Sustainability: sun control strategies

1. Exterior canopy overhang over south entry
2. Integral sunshades on south facing curtainwall
3. Ceramic frit pattern on glazing



Sustainability: natural day lighting strategies

1. Clerestory in briefing room
2. Clerestory in main corridors
3. Clerestory in courtroom



Sustainability: rain water collection

- Steel scuppers cantilever out from butterfly roof
- Rain chain guides water down into concrete water troughs



Community **Pride**

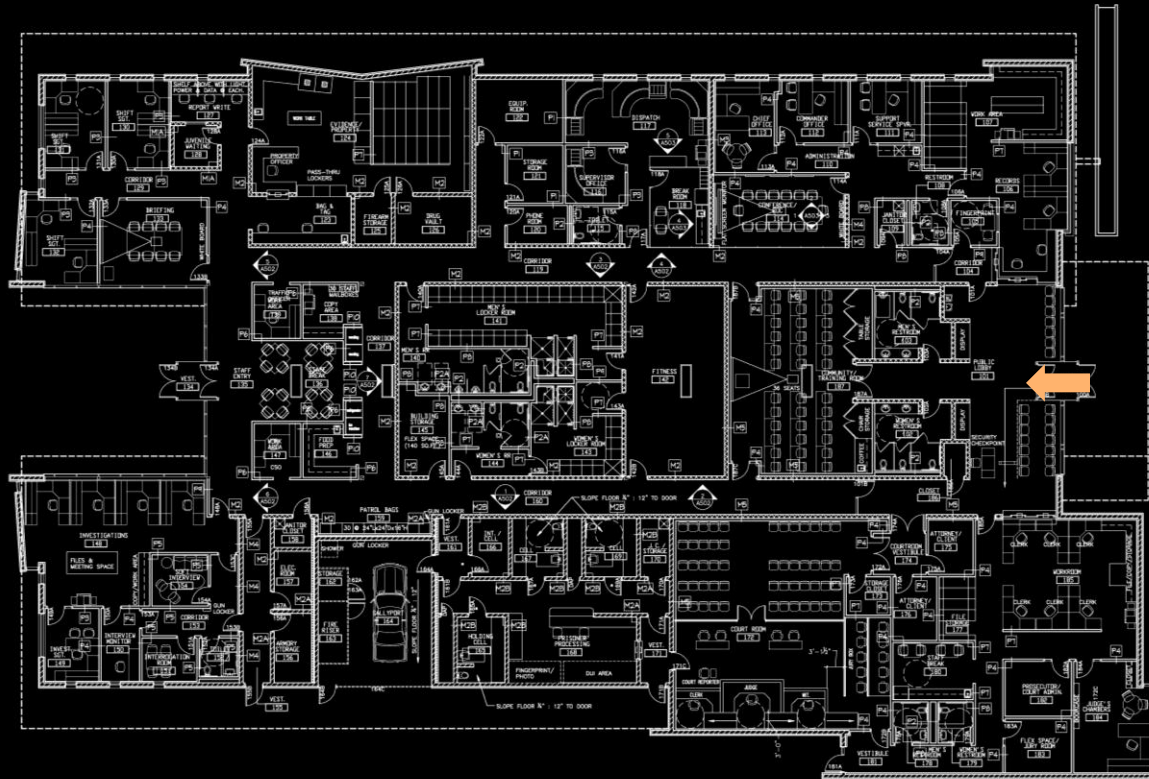


(video 5)



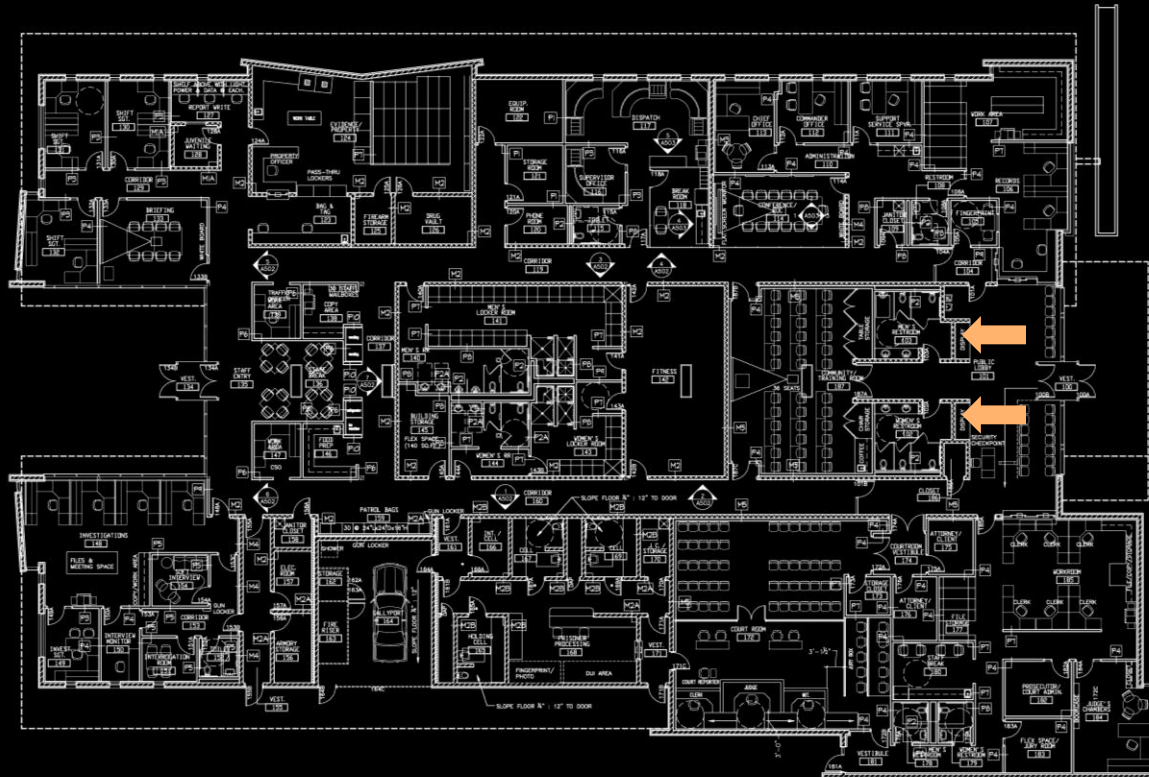
Community Pride: the details

- The Tolleson City seal in terrazzo in the public entry lobby



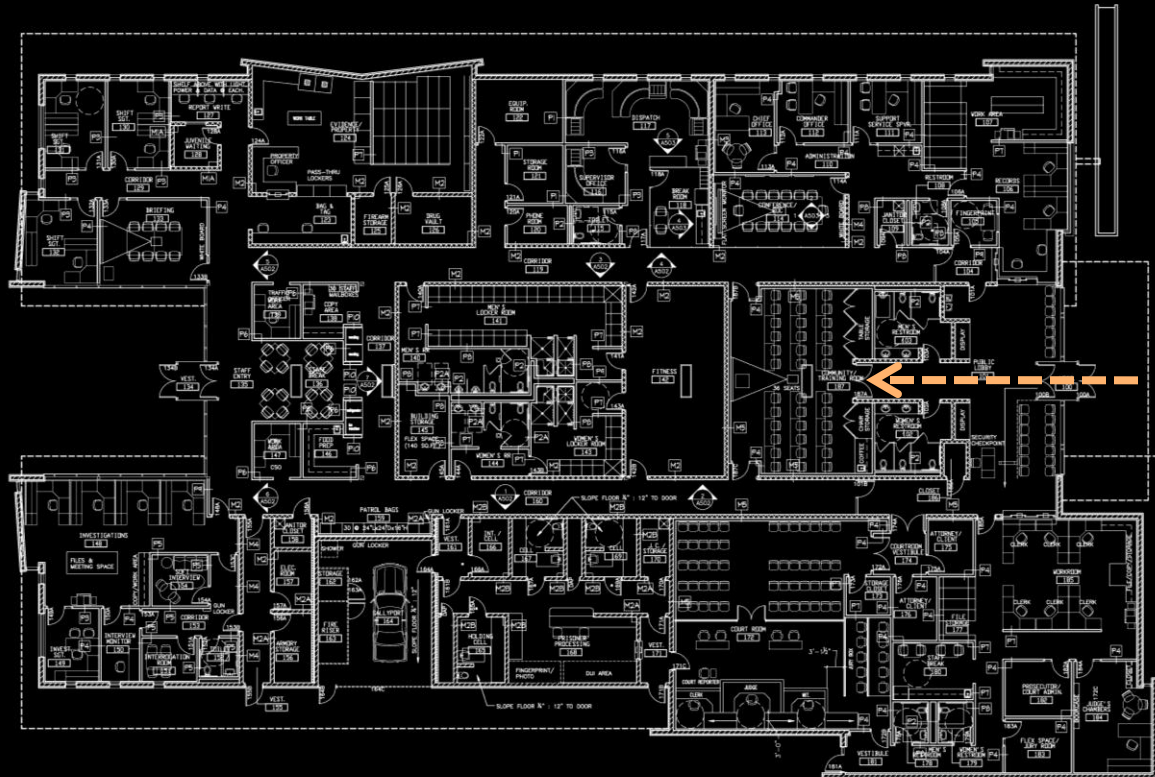
Community Pride: the details

- The Kachina Doll collection in the public entry lobby



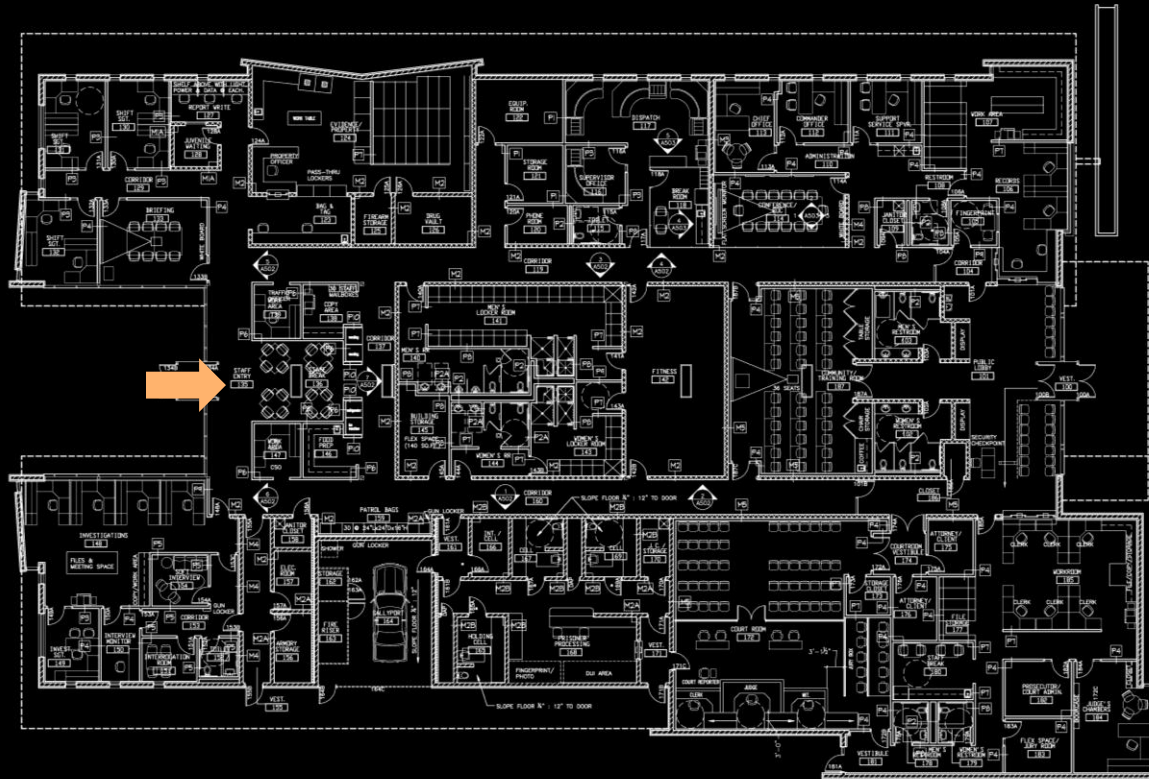
Community Pride: the details

- Community / training room – seats 36
- Used by police, VFW, Women's League, etc.



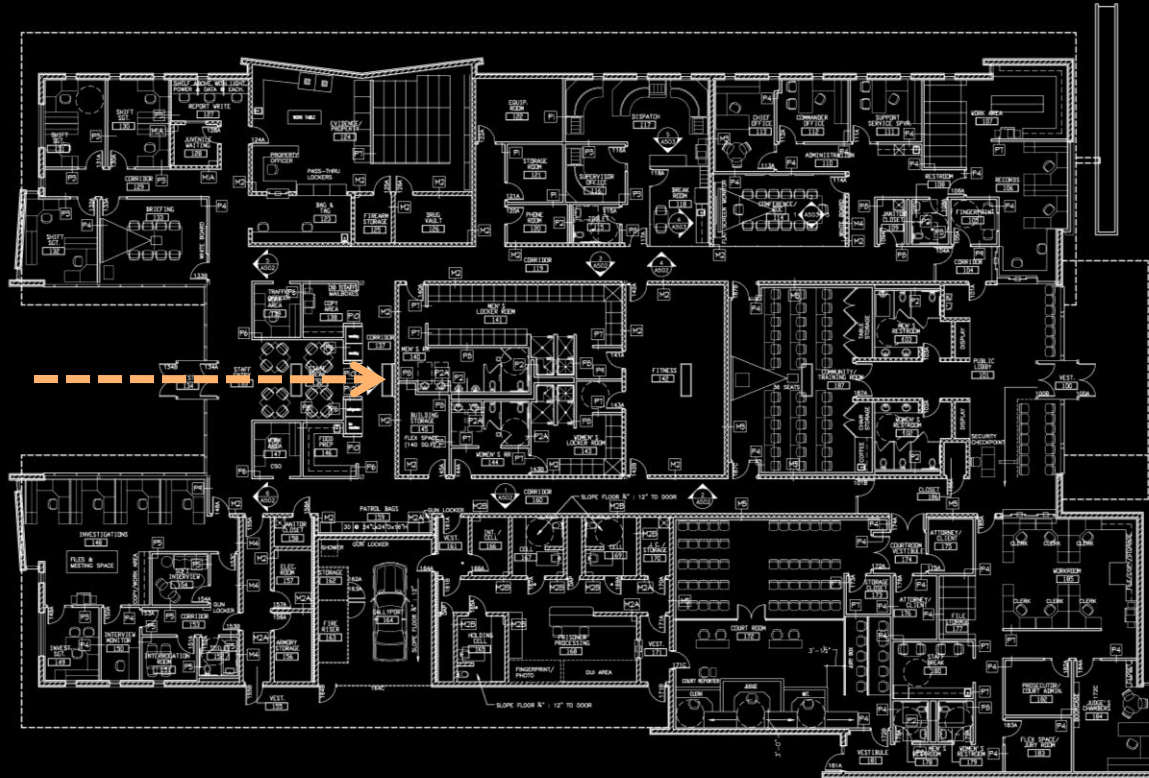
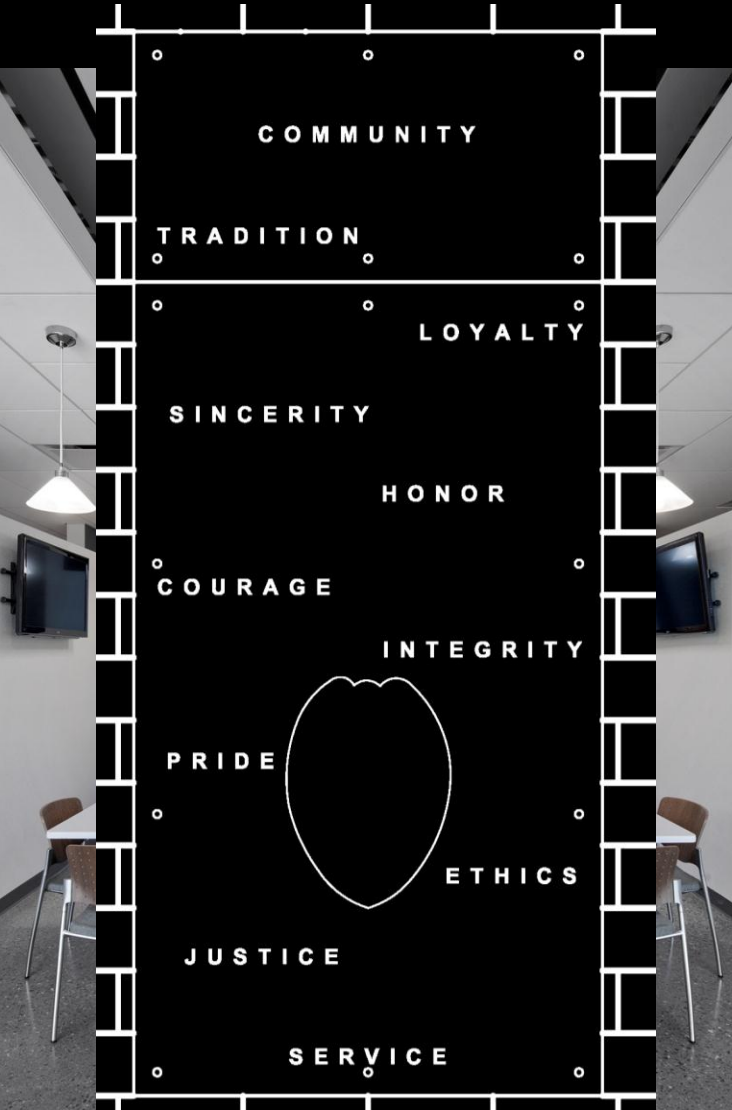
Community Pride: the details

- The Tolleson Police badge in terrazzo in the staff entry lobby



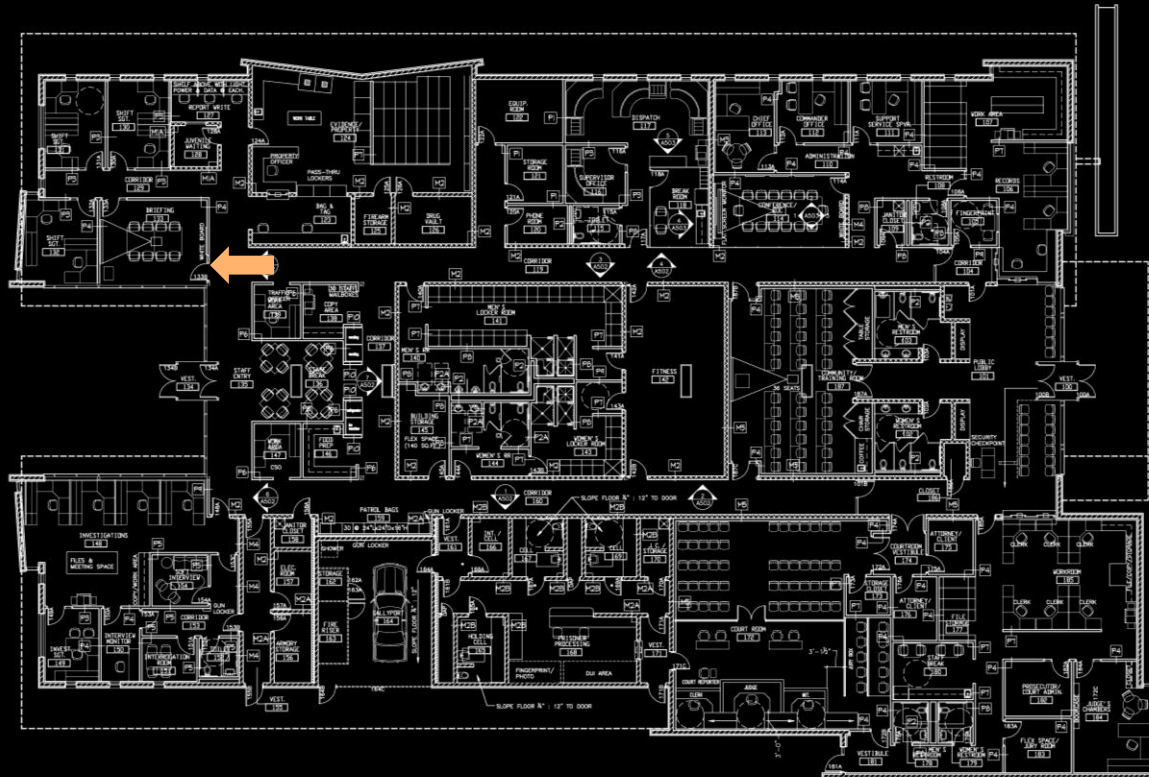
Community Pride: the details

- Blue glass | bronze badge wall feature
- On axis with staff entrance



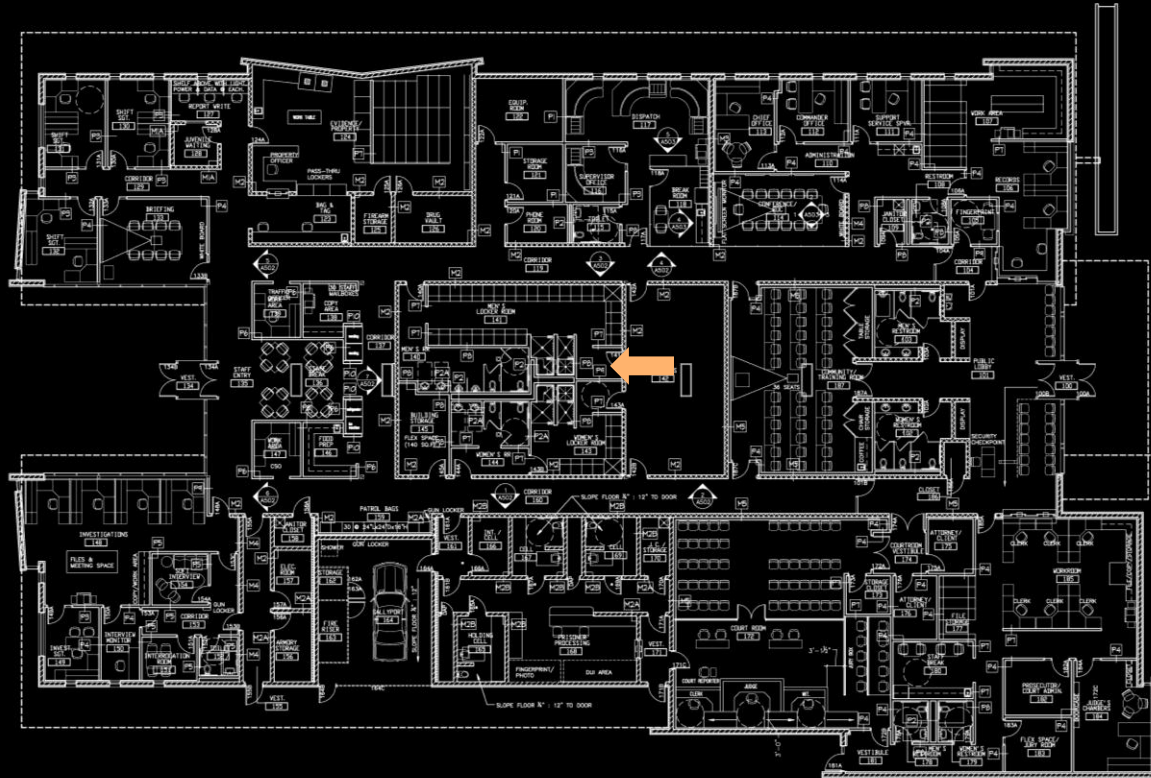
Community Pride: the details

- Mission statement wall graphic at entry to briefing room



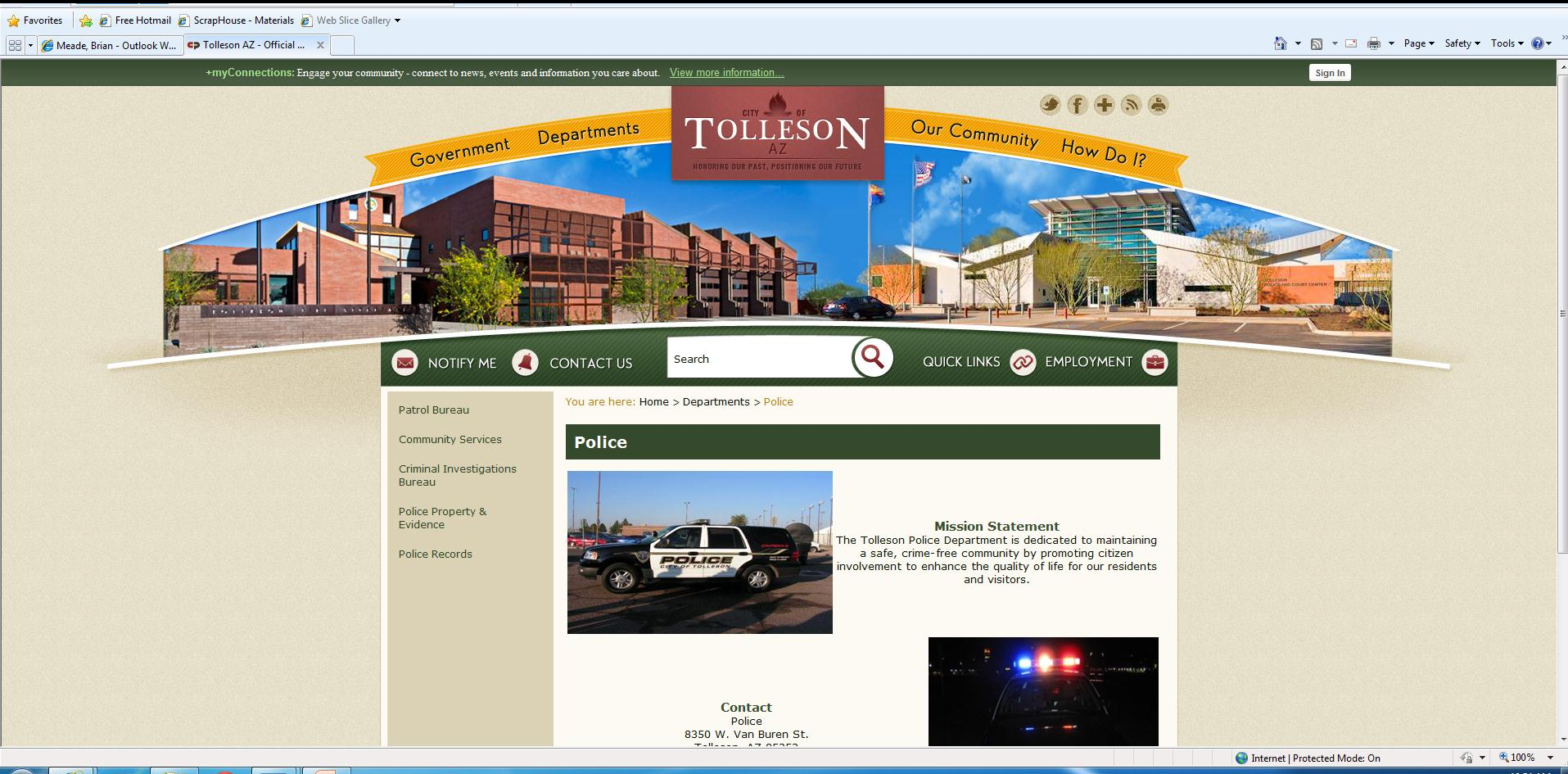
Community Pride: the details

- Inspiring text wall graphics at locker room entrances



Community Pride:

- Facility image now featured on community's homepage



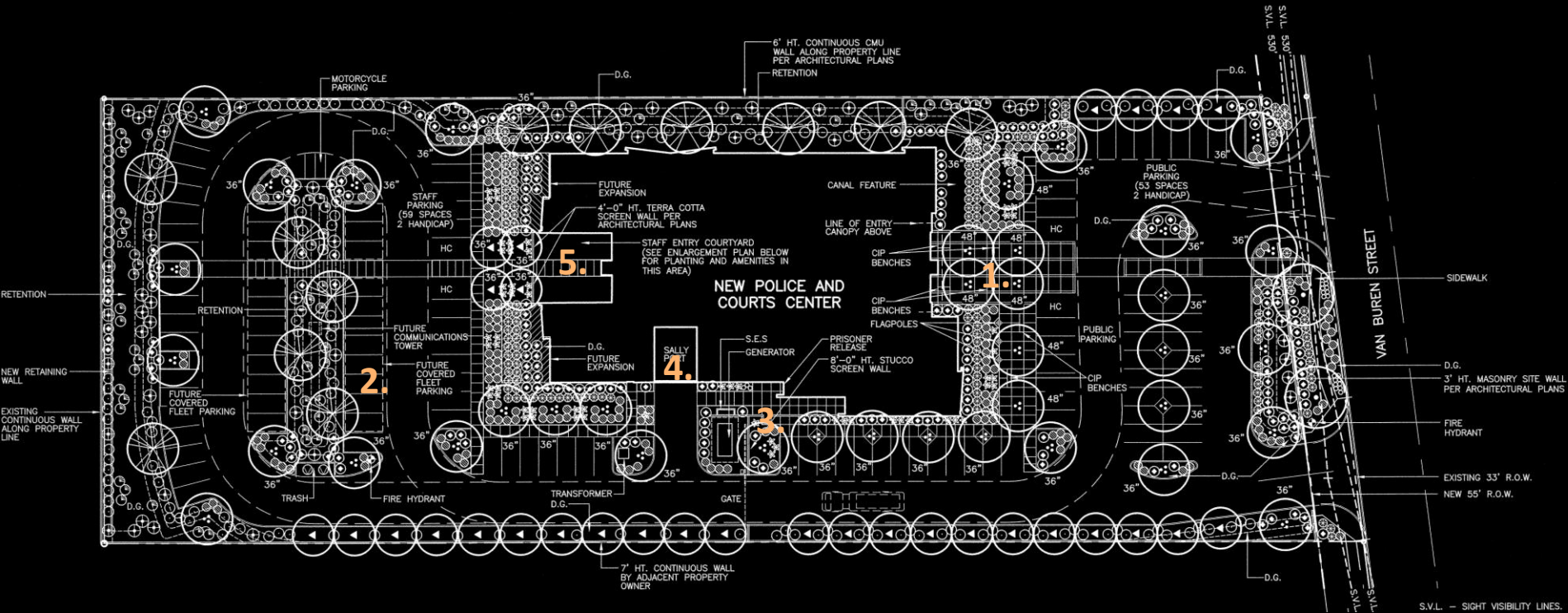
Efficient Design and Planning Details



(video 6)

Efficient Design: site plan

1. Public Entry & Plaza
2. Secured staff parking
3. Separate bond-out exit
4. Sally port
5. Staff Entry & Courtyard



Efficient Design: floor plan

1. Separation between public and staff areas
2. Shared spaces: lobby, restrooms, meeting rooms



Efficient Design: floor plan (22,400sf)

1. Public entry lobby
2. Community Training Rm
3. Clerks / Judge / Support
4. Courtroom
5. Prisoner Processing
6. Investigations
7. Staff Entry /Break Area
8. Lockers / Fitness
9. Patrol
10. Evidence & Property
11. Dispatch
12. Administration
13. Records



Efficient Design: planning

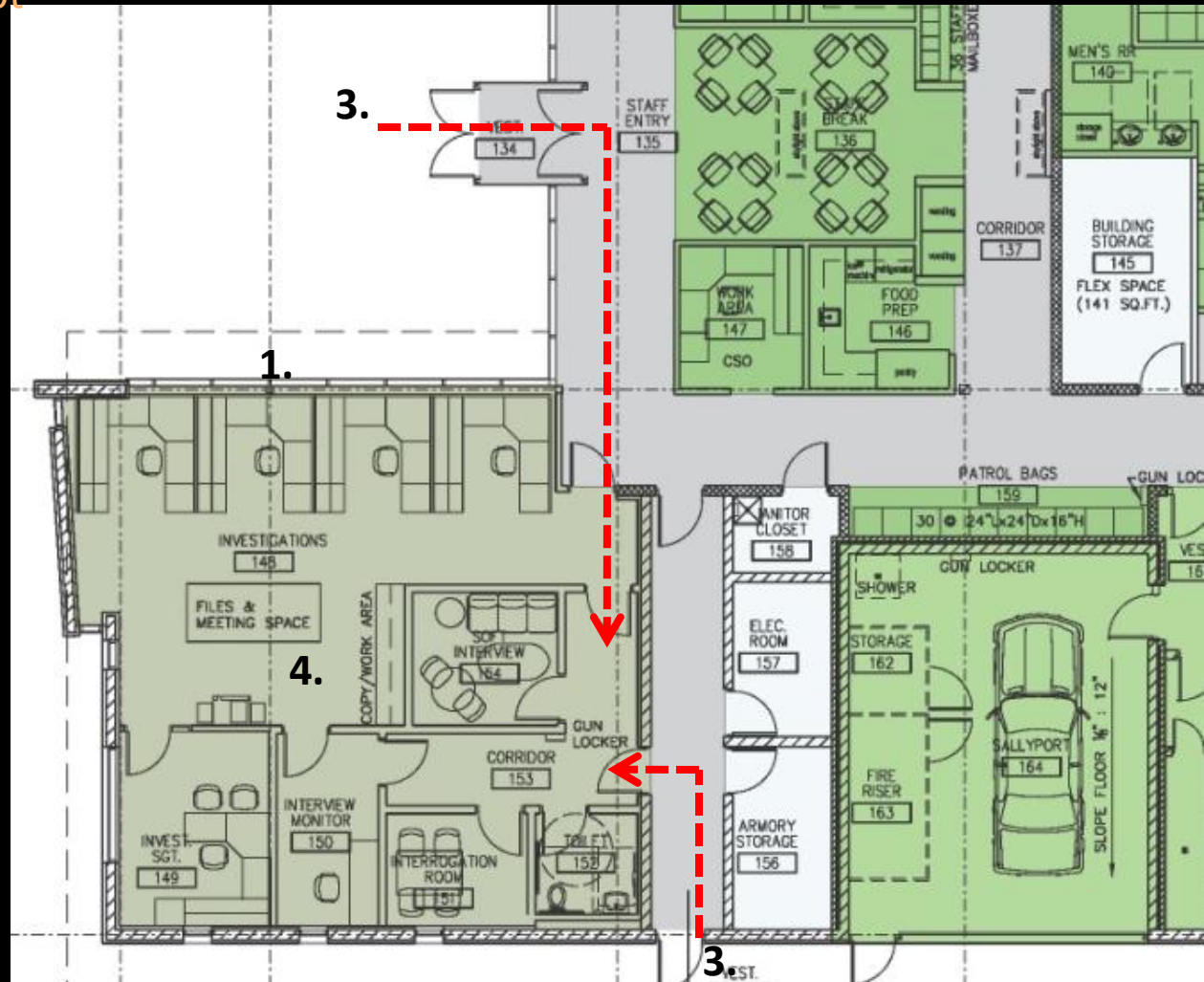
1. Patrol Triangle: goal to minimize travel between prisoner processing, evidence processing, and report writing.

juvenile holding & report writing area



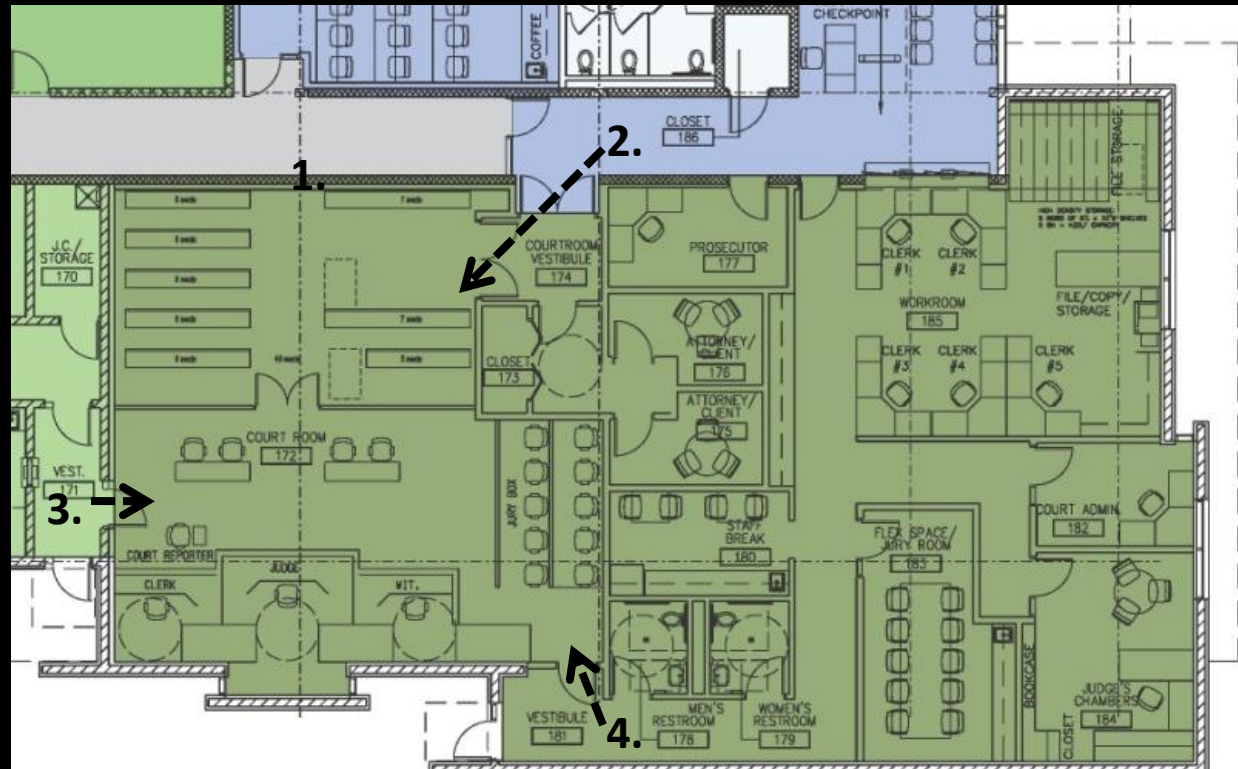
Efficient Design: **planning - investigations**

1. Courtyard glass provides views & natural light
2. Separation between work spaces and interview suite.
3. Multiple ways to bring people in.
4. Center work island concept

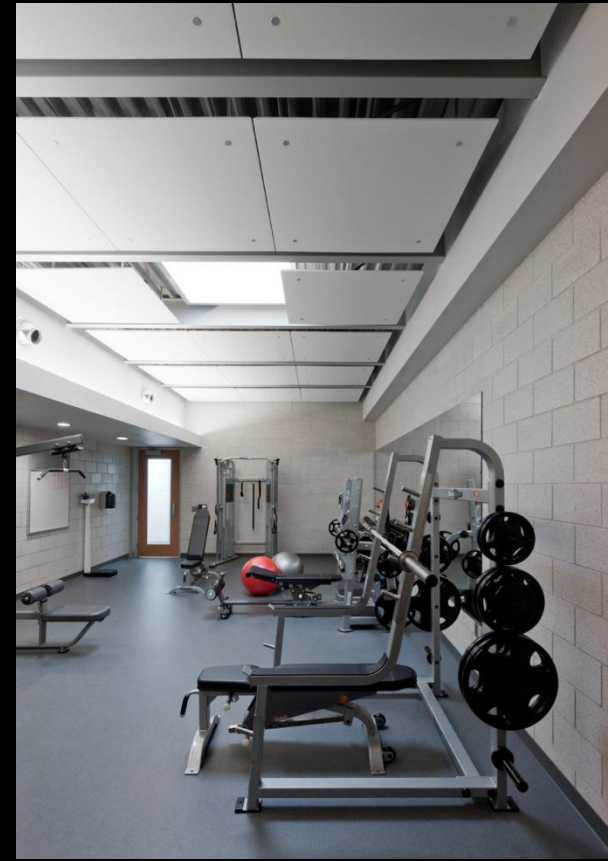


Efficient Design: **planning** - courtroom

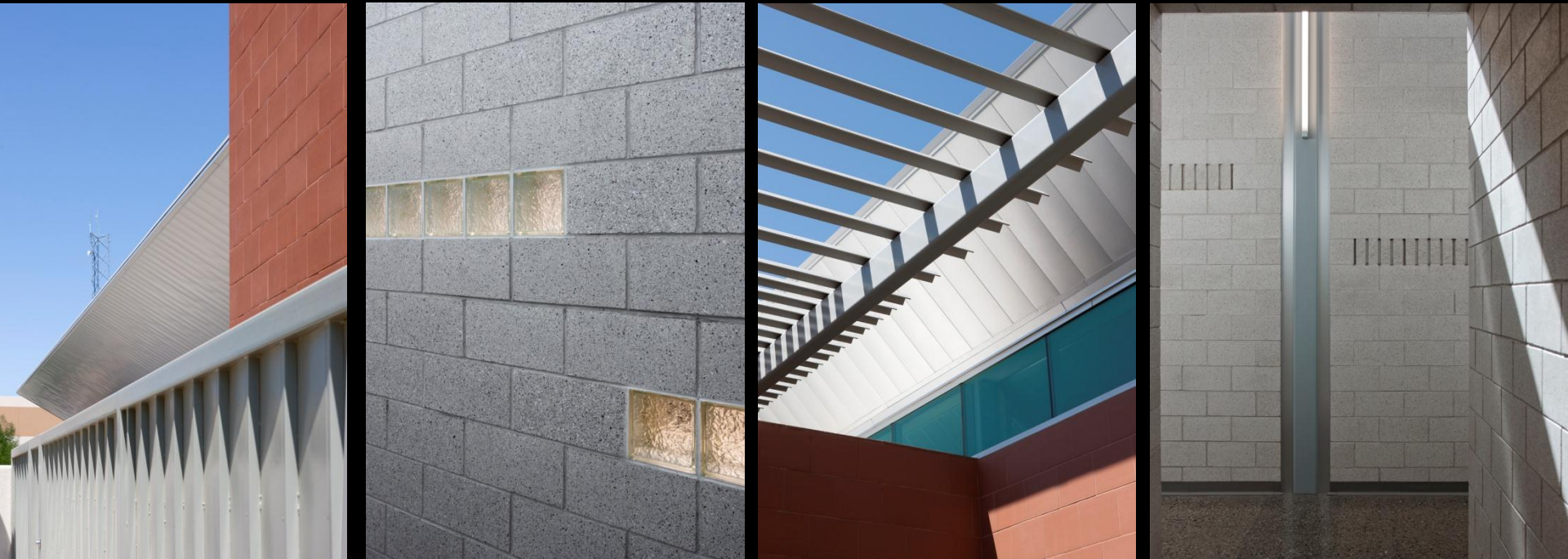
1. Clerestory location offering natural light
2. Public entrance
3. Prisoner entrance
4. Judge | Jury entrance



Efficient Design: staff spaces that promote a sense of community



Efficient Design: **durable, economical materials**

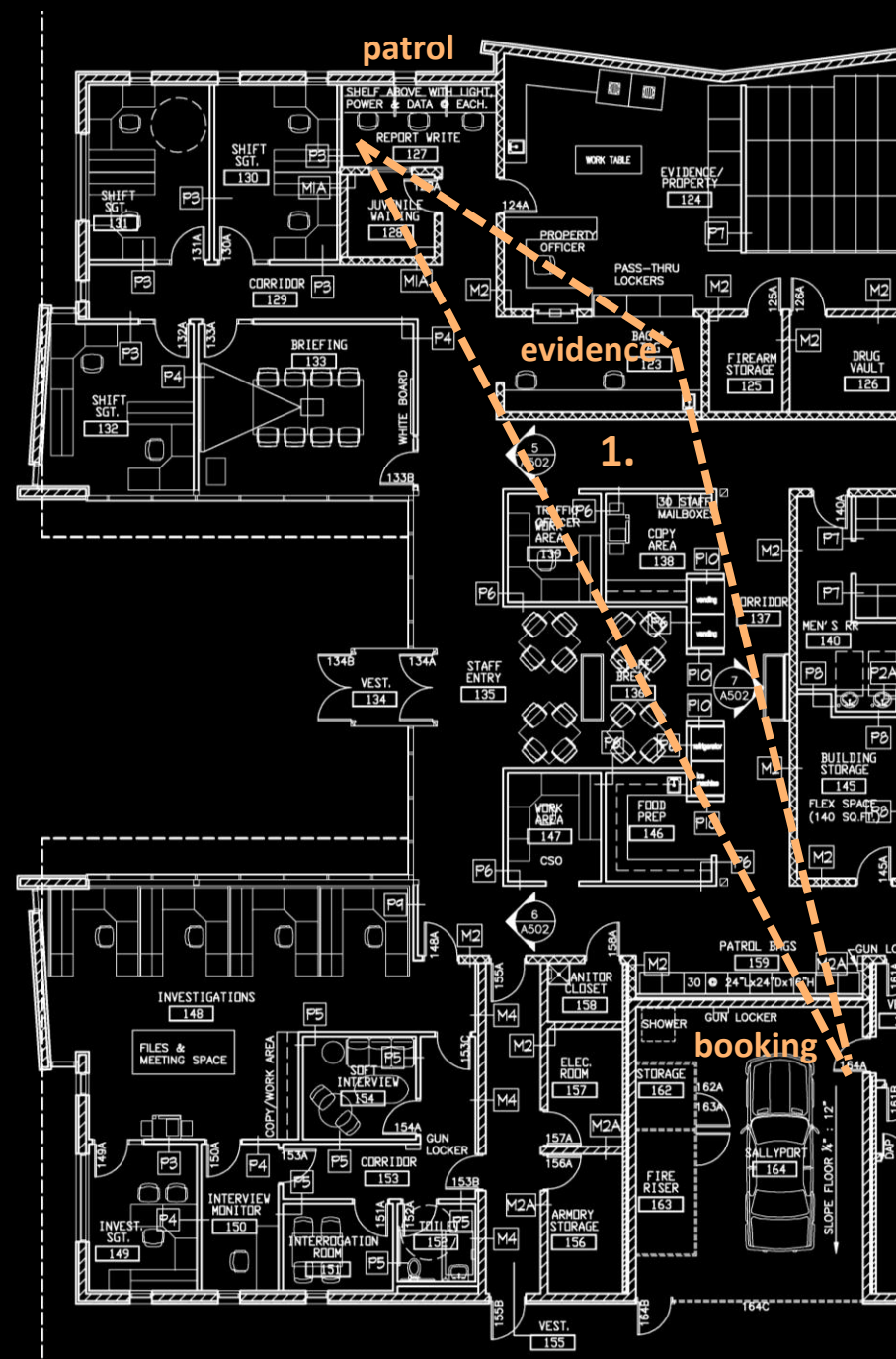


Project experience with Community Dialogue



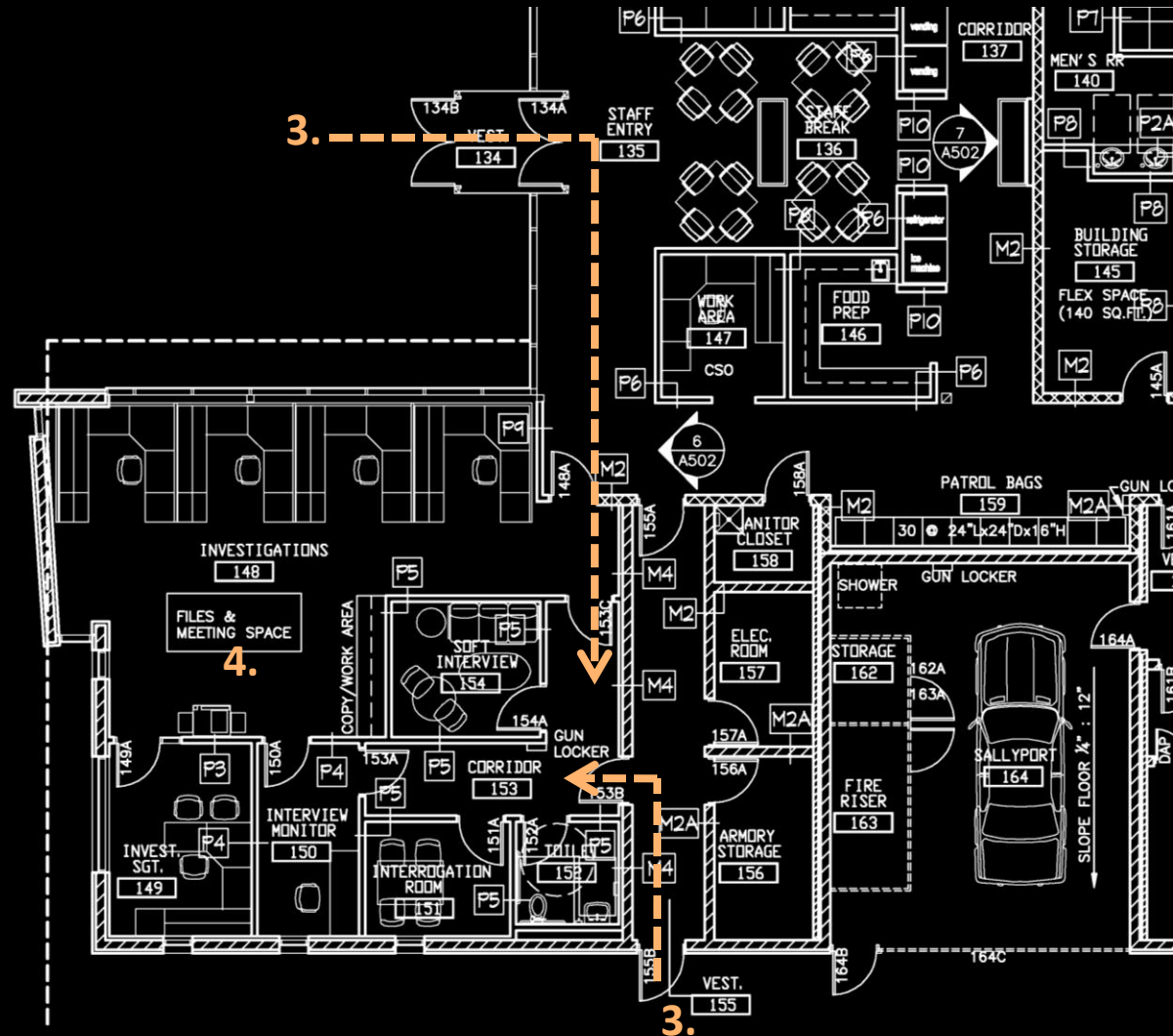
Efficient Design: planning

1. Patrol Triangle: goal to minimize travel between prisoner processing, evidence processing, and report writing.



Efficient Design: **planning - investigations**

1. Natural Light
2. Separation between work spaces and interview suite.
3. Multiple ways to bring people in.
4. Center work island concept



- July 2008 (alternate training / community room options to front)



Collaboration



(video 4)

Design

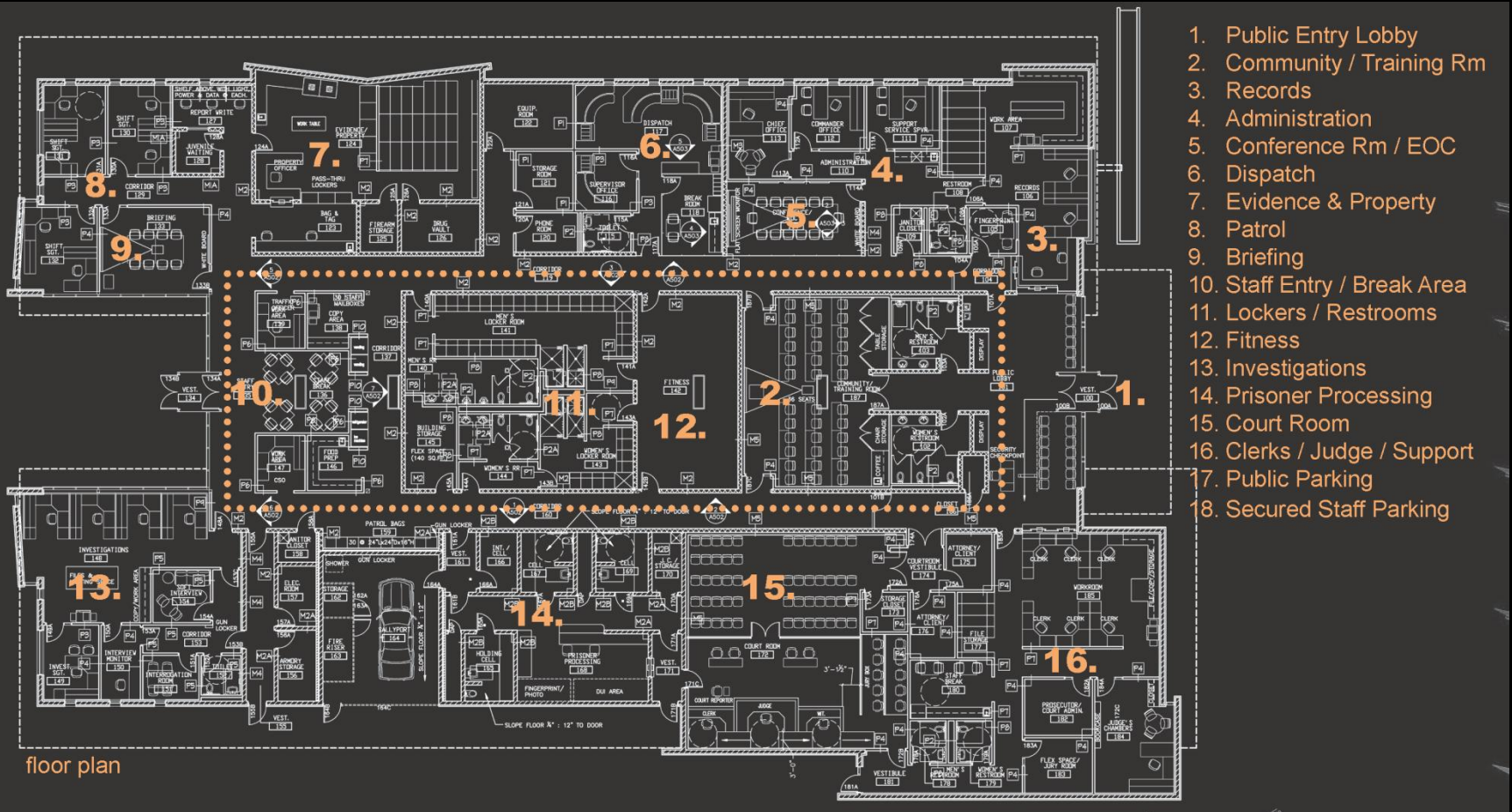
- Design Inspirations / Cues / Material selection
- Response to Site and Context
- Organization and Identity between multiple users
- Sustainability

Sites | Users

- The evolution of the sites (various plan graphics from the study)
- The evolution of the Users (with the courts dept in & out throughout the process... design had to be flexible)
- Benefits of sharing spaces with the courts (list)
- **Priorities and drivers** on how final site got selected (promote development on east end of town; to remove some users, no future binding issues; 99th ave – problem site due to retail)
- Community Visibility
- The program

Design

• ?



Details

- Badge wall
- Floor patch
- Graphics
- Lobby display cases
- Community Room

Conclusions

- ?