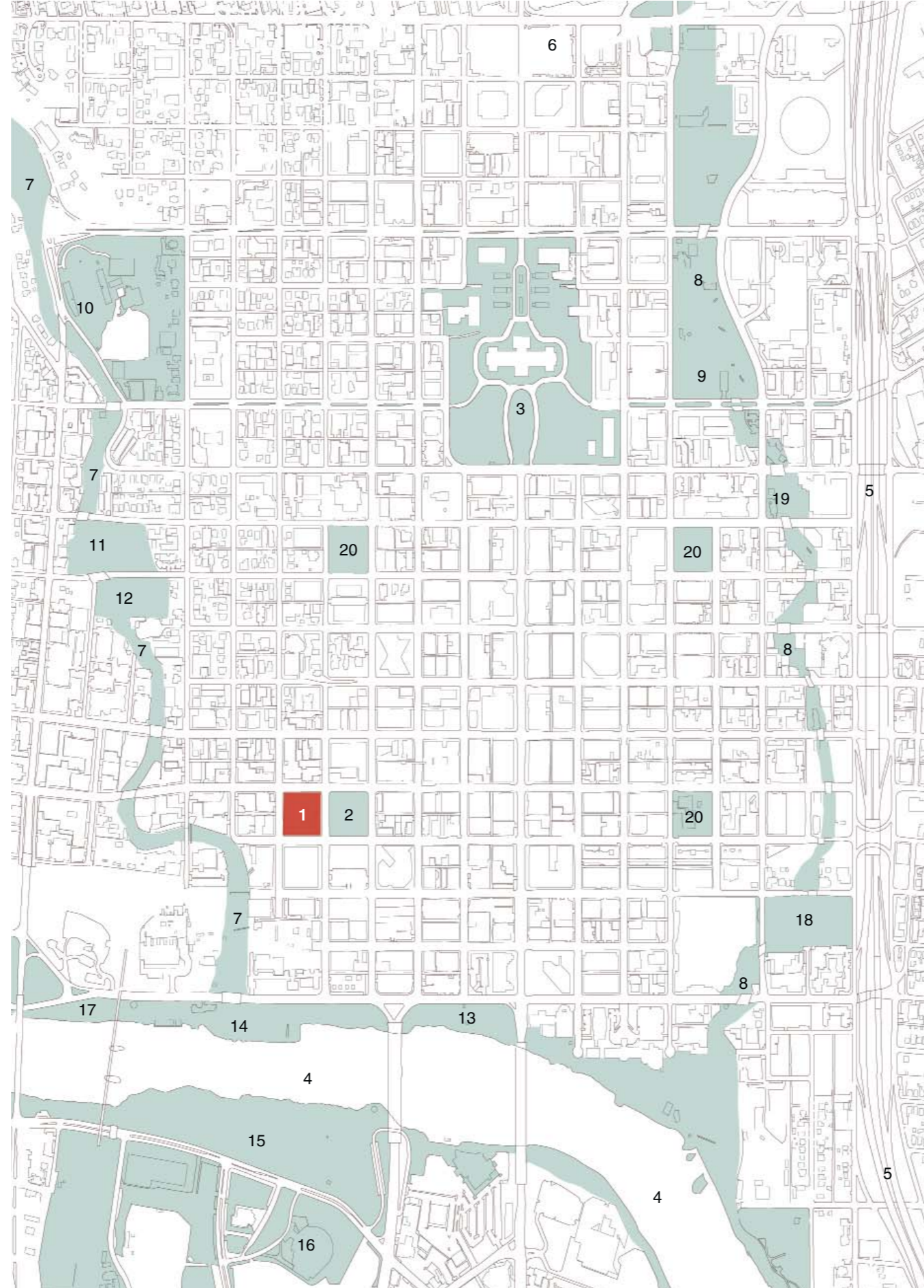




“To me, the wonderful integration displayed among the three of you and Judge Austin’s immense pride in the final product are the truest indicators of obtaining quality.

Congratulations on the creation of a new landmark and a very thoughtful addition to the city of Austin.”

The above is an excerpt from a personal note to the architect.  
It is in response to the mention of the project at Design Talks at Cooper Hewitt.  
The note is from an owner representative, Casey Jones, Director of Design Excellence,  
U.S. General Services Administration, to the architect.  
26 August 2013



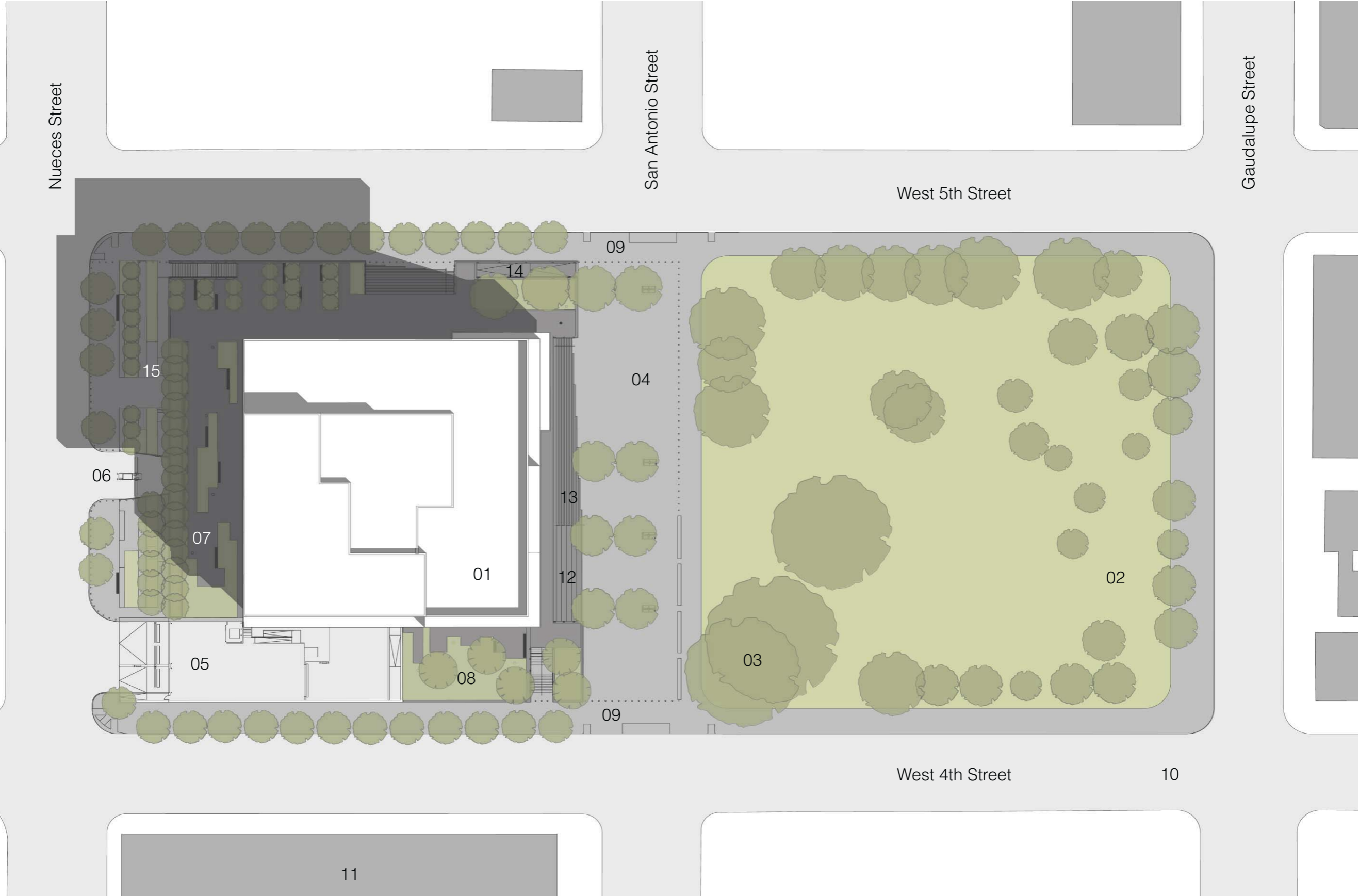
#### Other

- 5 Interstate 35
- 6 University of Texas, Austin

#### Green Space

- 7 Shoal Creek (within park lands)
- 8 Waller Creek (within park lands)
- 9 Waterloo Neighborhood Park
- 10 House Park
- 11 Duncan Park
- 12 9th Street Dirt Jumps/Trails
- 13 Margaret Hoffman Oak Park
- 14 Lake Metropolitan Park
- 15 Auditorium Shores at Town Lake
- 16 Butler Park
- 17 Sand Beach Park
- 18 Palm Park
- 19 Symphony Square
- 20 Original Parks

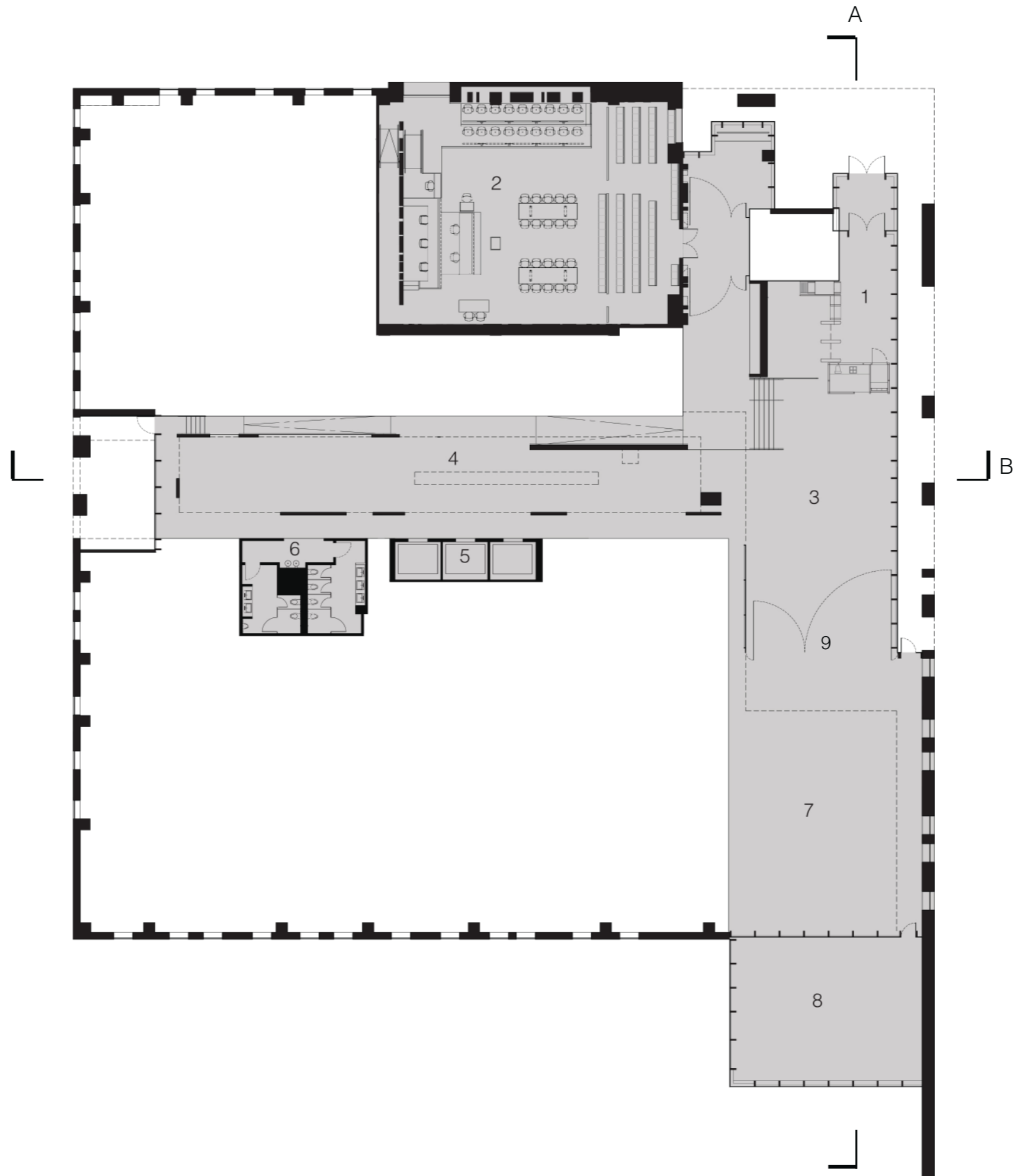




Site Plan:

01 United States Courthouse	02 Republic Square Park	03 Auction Oaks	04 San Antonio Plaza	05 Sally Port
06 Secure Parking Entry	07 Secure Garden	08 Jury Garden	09 Transit Stop	10 Bike Route
12 Amphitheater Stair	13 Grand Stair	14 Accessible Route	15 West Garden	11 Parking Facility





Entry Level:  Public Area 1 Entry 2 Special Proceedings Courtroom 3 Lobby 4 Elevator Lobby 5 Restrooms 6 Restrooms 7 Jury Assembly 8 Jury Garden 9 The Austin Wall





Composite Levels 6 and 7\*:\*

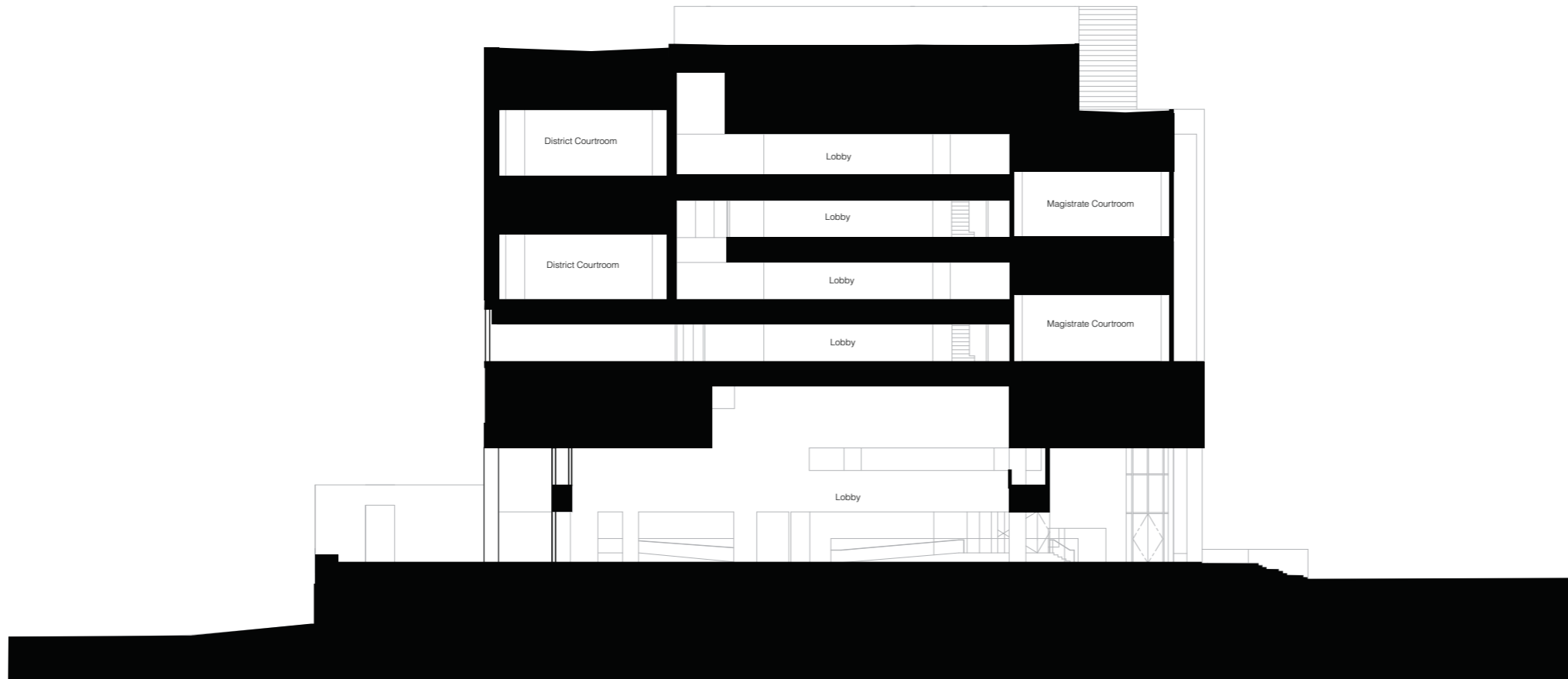
- Level 6
- Level 7

- 1 District Courtroom (Level 7)
- 2 Courtroom Lobby
- 3 Magistrate Courtroom (Level 7)
- 4 Attorney/Witness Conference Rooms
- 5 Elevators
- 6 Restrooms
- 7 Courtroom Lobby (Level 6)
- 8 District Courtroom
- 9 Magistrate Courtroom (Level 6)



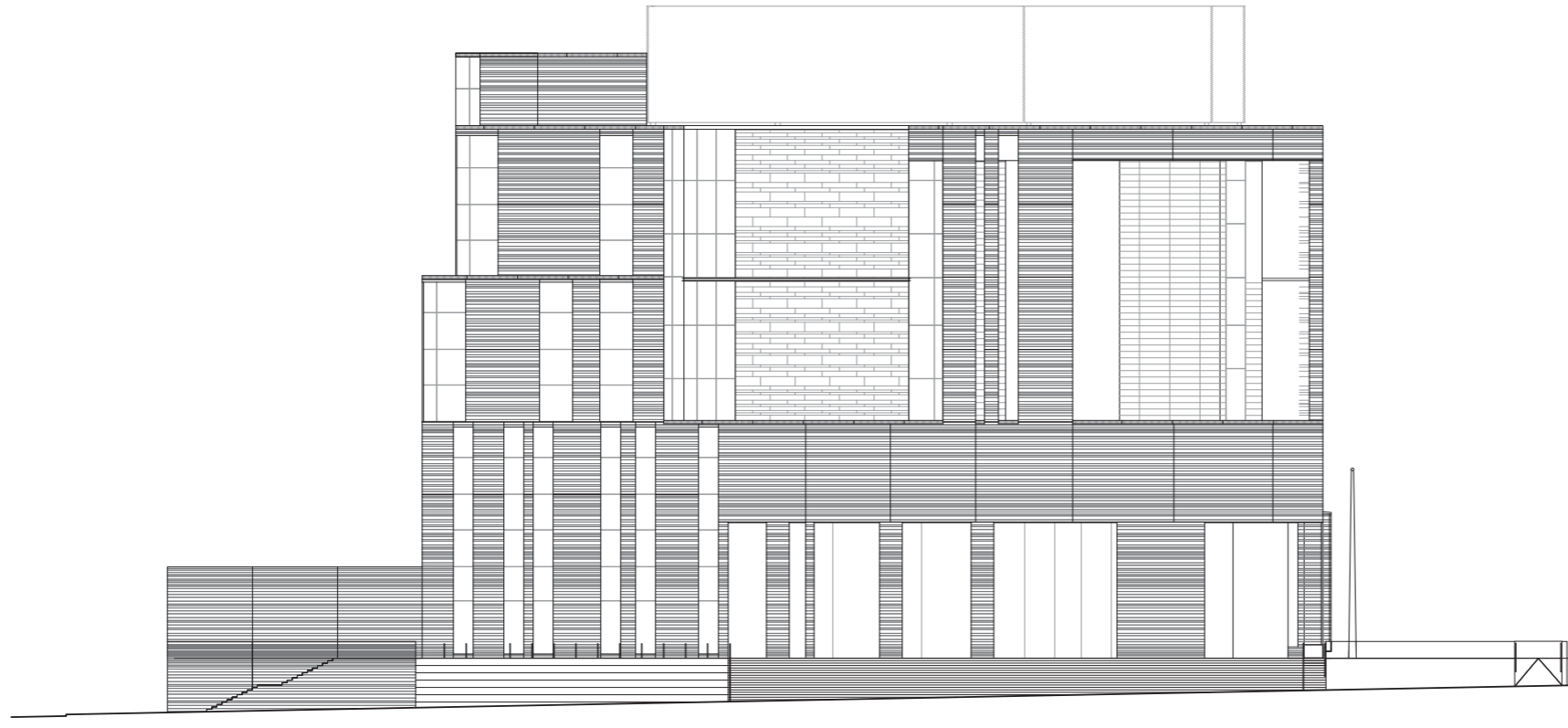


Section A-A

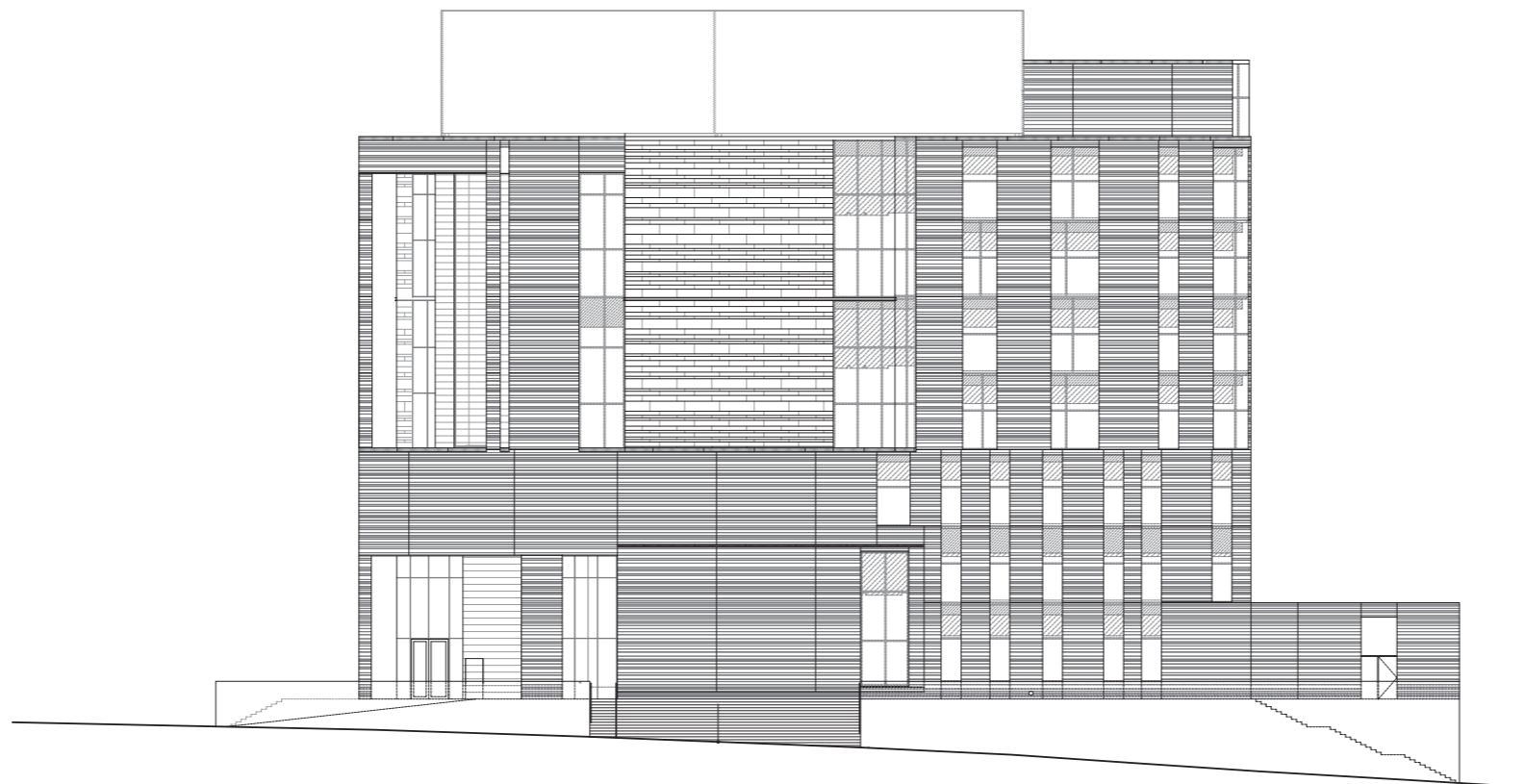


Section B-B

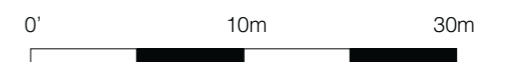




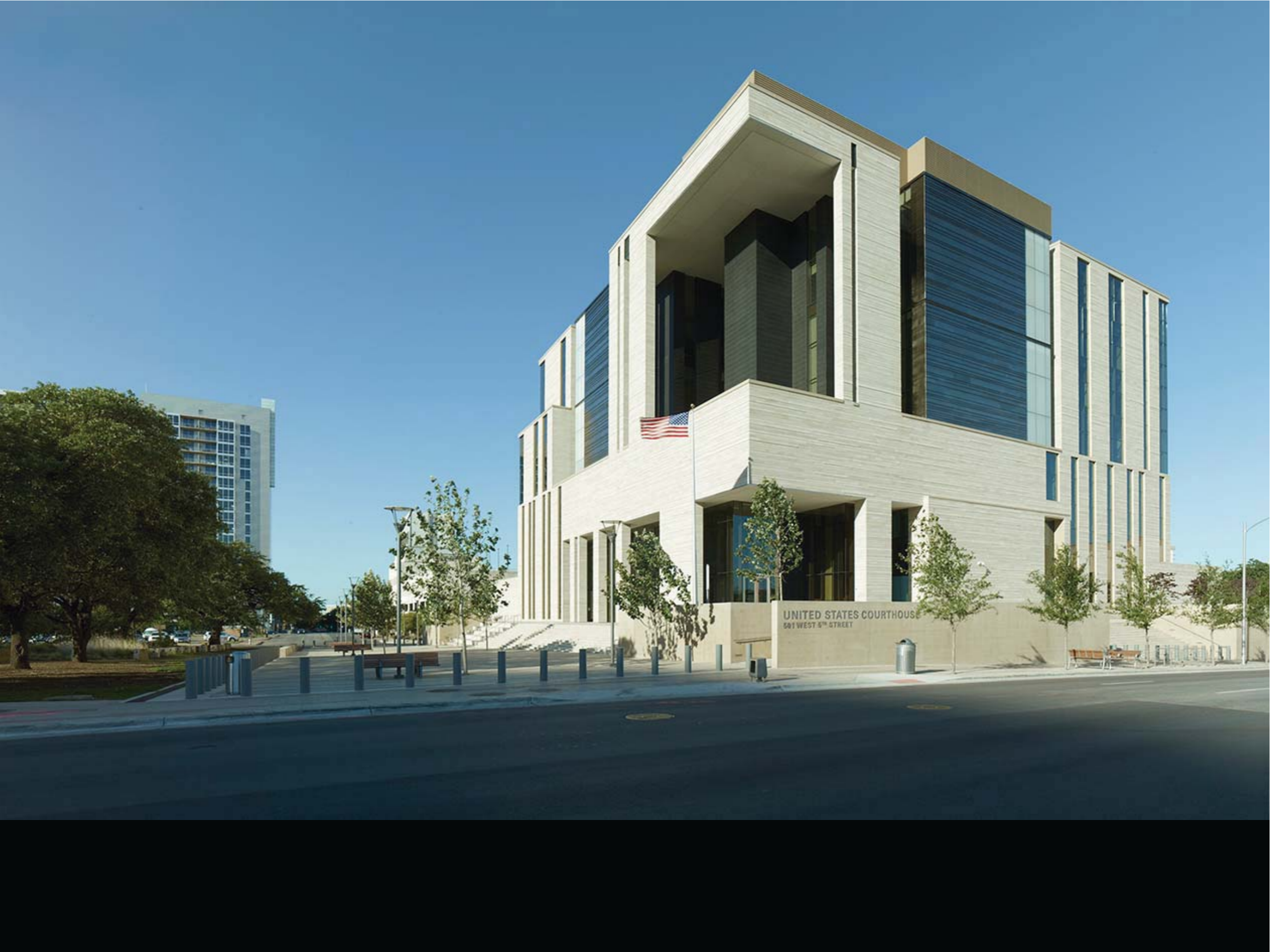
Elevation - East



Elevation - North







UNITED STATES COURTHOUSE  
501 WEST 5TH STREET























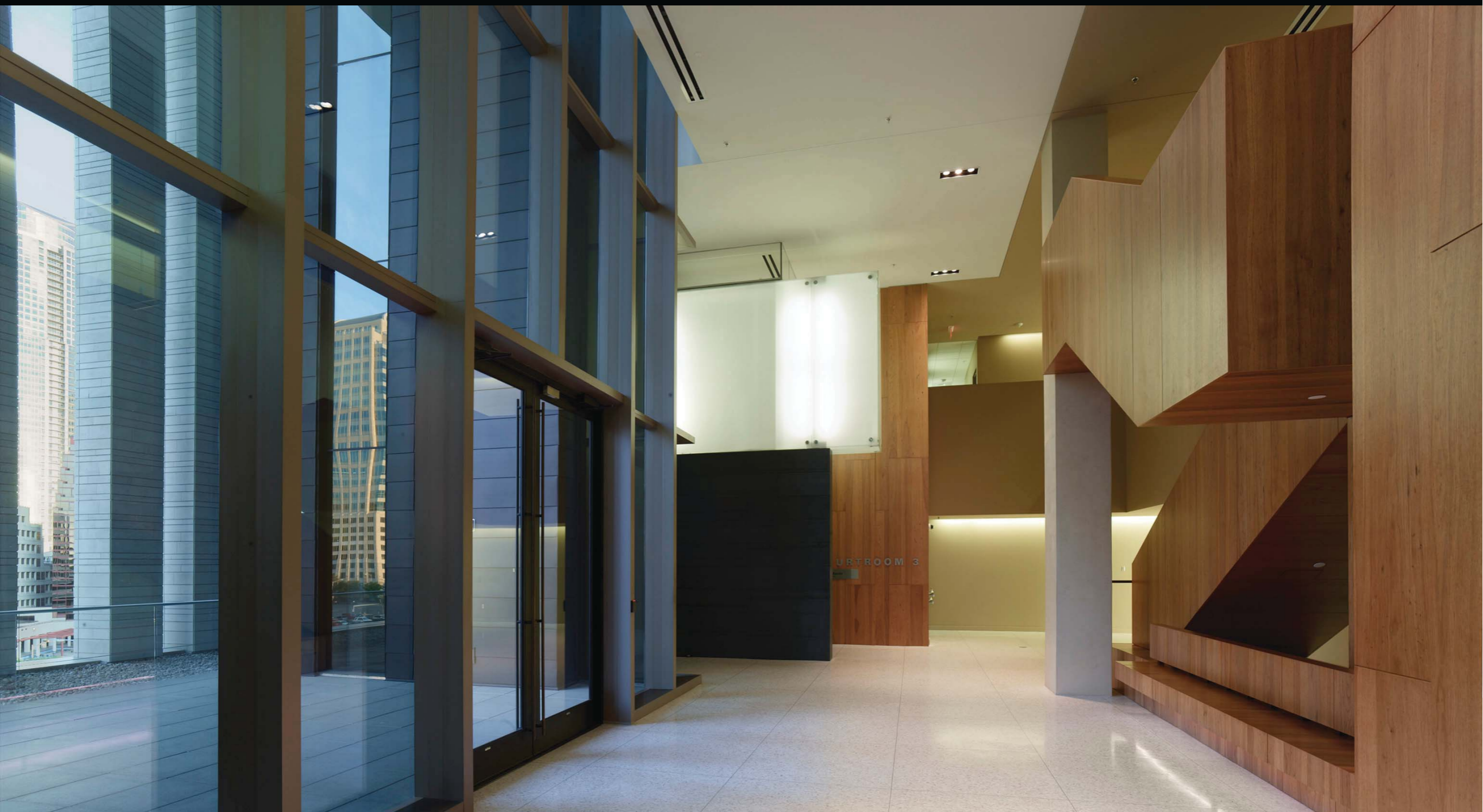




















































“To your question, how does [the new building] change how I do my job? [...]

In a sense, I hope not. Because hopefully, I have got it right as much as possible [laughter]. And, that I was doing that in the old building where I sat for thirteen years [chuckles]. But I don't think, there's not any way that it couldn't have a positive effect.

I don't know that we know what it is consciously doing to us. In fact, if it is good architecture, I think we probably don't. We probably aren't aware that it is the architecture that is having that impact on us.

Our views toward our justice system, Jude Yeakle's, Judge Sparks' and mine were about: the public process, it should be transparent, it should be open. The building reflects all of that. And there is no doubt that it will have a positive impact on the way that we work there.

Let's just say I love going to work every day.

My office is awesome.

The above is an excerpt from Design Talks at Cooper Hewitt at which the client, Judge Andrew Austin, responds to a question from the audience about the United States Courthouse, Austin Texas.

10 May 2013