

Design for Aging



The mission of the AIA **Design for Aging** (DFA) Knowledge Community is to foster design innovation and disseminate knowledge necessary to enhance the built environment and quality of life for an aging society.

Continuing education credits

Earn 1 AIA LU

This program is registered with the AIA/CES for continuing professional education. As such, it does not include content that may be deemed or construed to constitute approval, sponsorship or endorsement by AIA of any method, product, service, enterprise or organization.

The statements expressed by speakers, panelists, and other participants reflect their own views and do not necessarily reflect the views or positions of The American Institute of Architects, or of AIA components, or those of their respective officers, directors, members, employees, or other organizations, groups or individuals associated with them.

Copyright notice

This presentation is protected by US and International Copyright laws. Reproduction, distribution, display and use of the presentation without written permission of the speaker is prohibited.

© The American Institute of Architects 2022

September 19, 2022

Intergenerational Living, Inclusive Communities

Strategies for Planning and Design

01

INTRODUCTION



SPEAKER INTRODUCTIONS



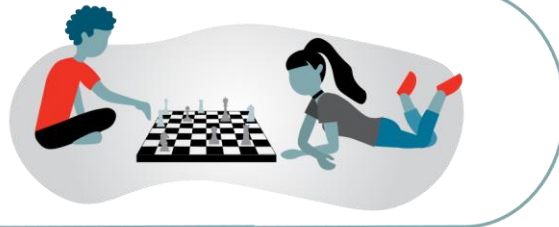
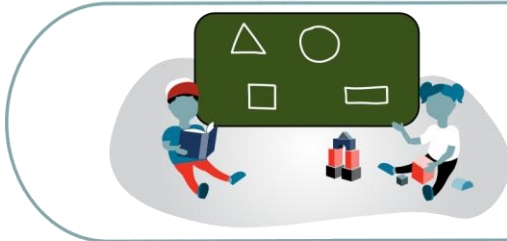
Ilijana Soldan
AIA, LEED AP BD+C,
EcoDistricts AP



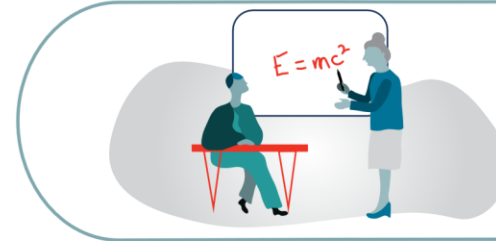
Matthew Fitzsimmons
AIA, AICP,
LEED AP BD+C

WHAT IS INTERGENERATIONAL LIVING?

MULTIGENERATIONAL

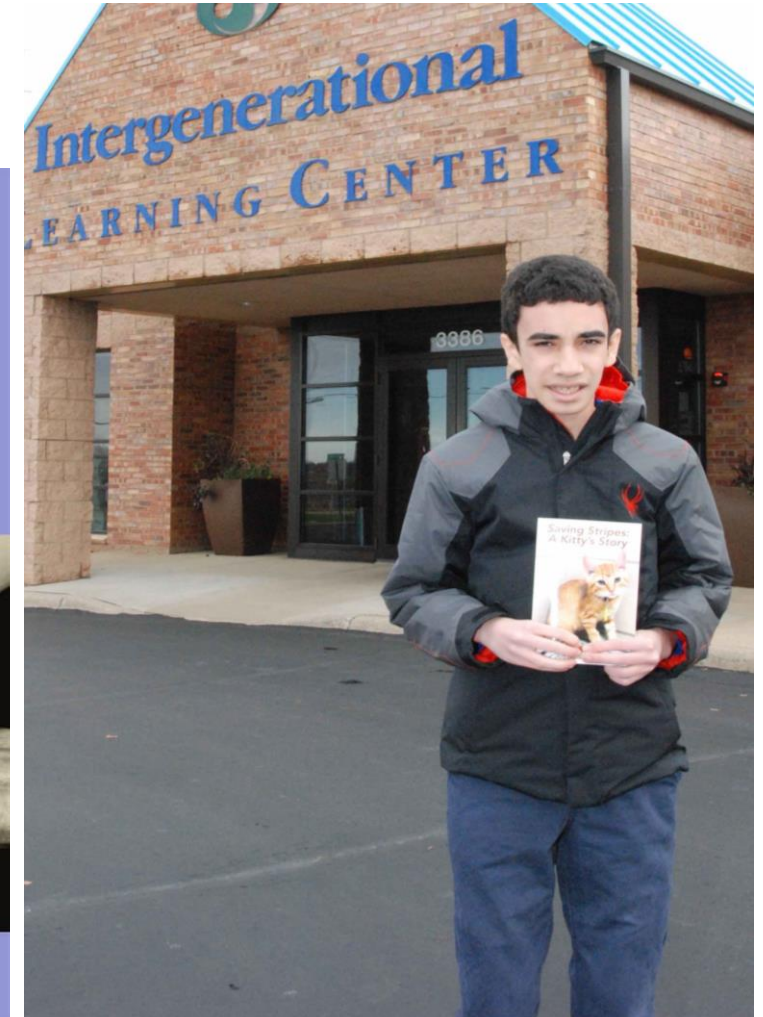
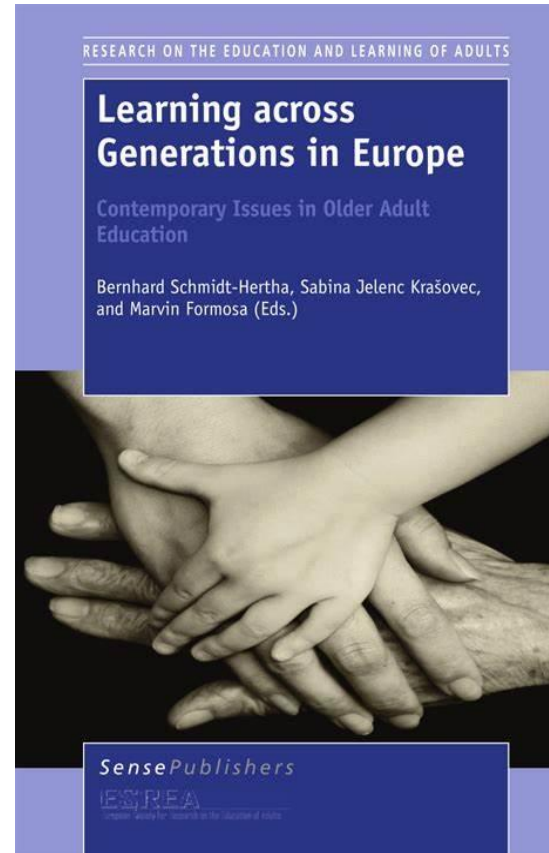


INTERGENERATIONAL



BENEFITS OF INTERGENERATIONAL LIVING

LEARNING



BENEFITS OF INTERGENERATIONAL LIVING

HEALTH AND WELLNESS



BENEFITS OF INTERGENERATIONAL LIVING

SHARED RESOURCES AND PROGRAM

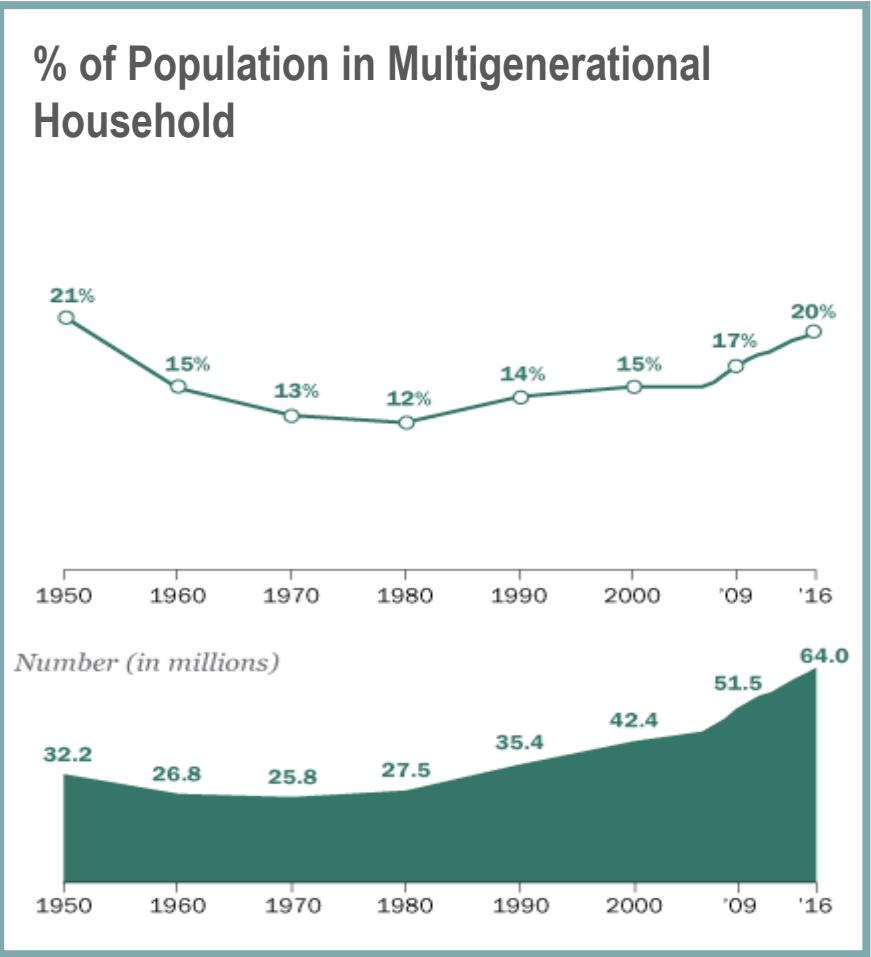
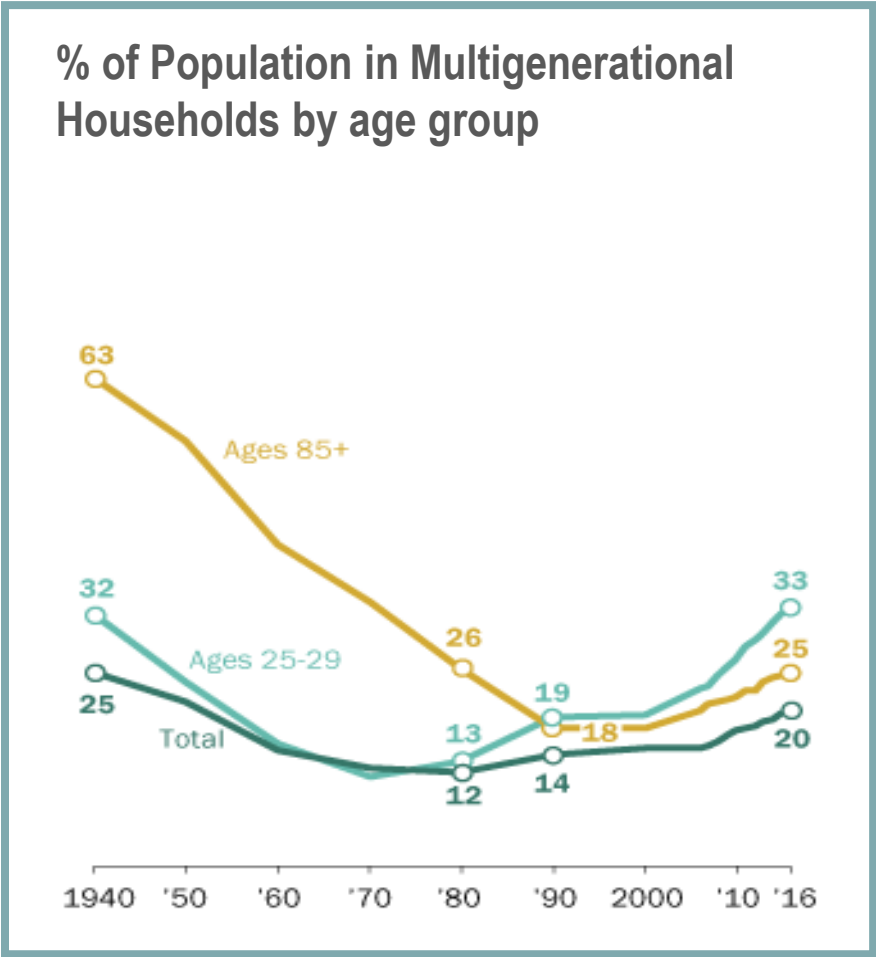


BENEFITS OF INTERGENERATIONAL LIVING

HOUSING ACCESSIBILITY



DEMOGRAPHICS AND RESEARCH



Source: Pew Research Center

02

HISTORICAL TRENDS



CHANGING URBANISM IN A NEW WORLD

WALKING CITY

STREETCAR CITY

AUTOMOBILE CITY



THE WALKING CITY (colonial seaports to industrial centers)

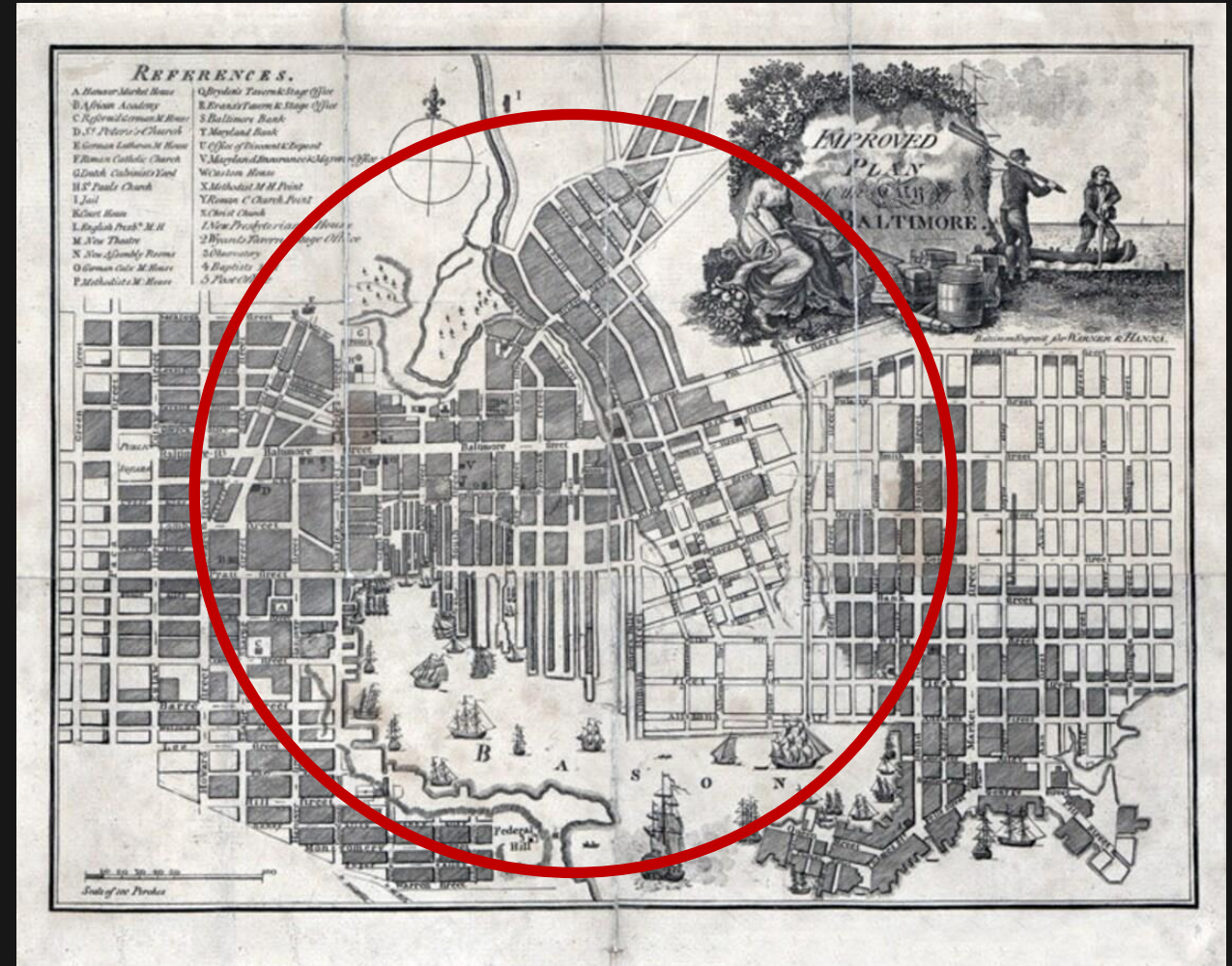
TIME PERIOD: Early settlements - 1890

FORM: Concentrated within a 30- to 45-minute walk

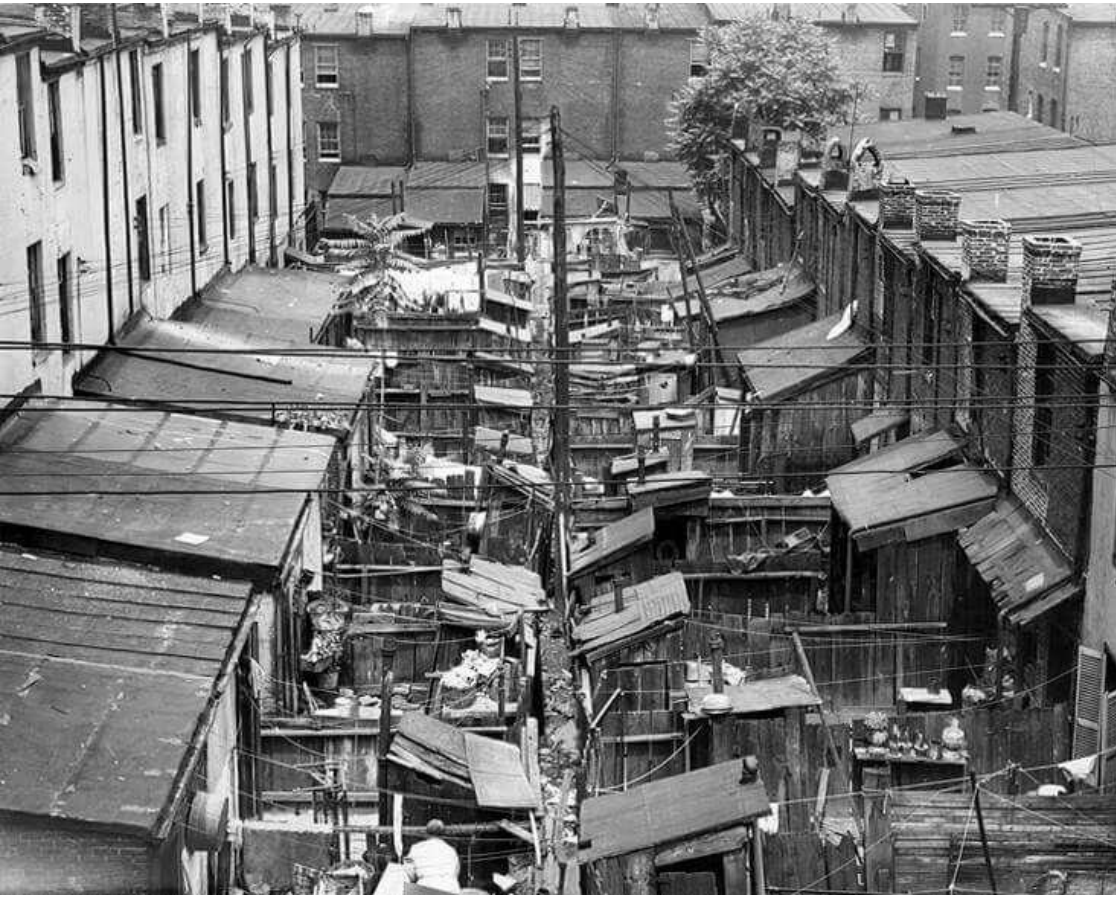
SPEED: 3 MPH to 5 MPH

CHARACTERISTICS:

- Integration of socio-economic groups
- Compact dense neighborhoods around city center
- Mix of uses, particularly industries
- Polluted and lack of sanitation
- Congested with waves of immigration



INDUSTRIAL CITY: IMMIGRATION + POLLUTION



STREETCARS

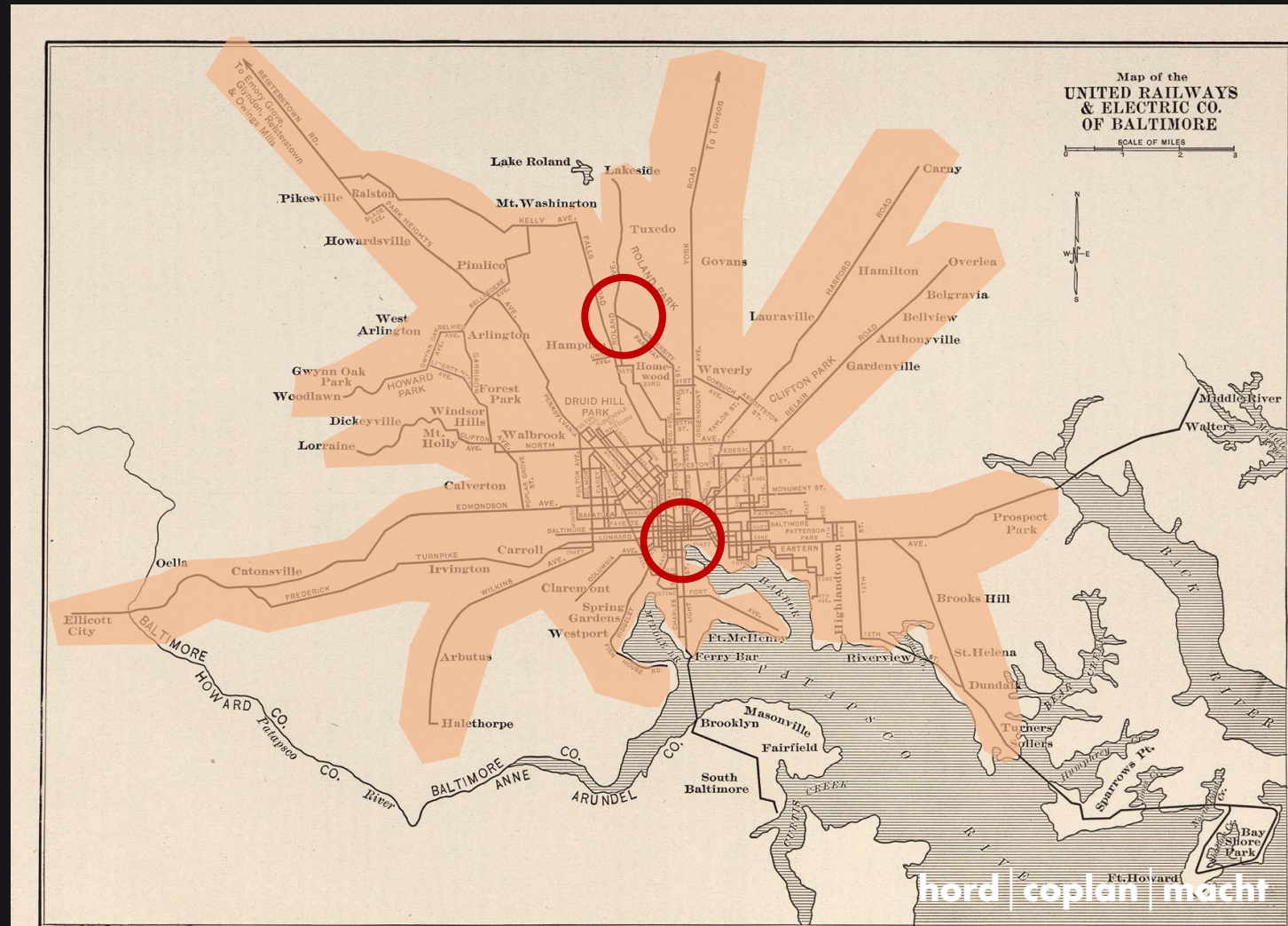
TIME PERIOD: 1890-1945

FORM: Star-shape growth;
corridors extending 20
miles from the core

SPEED: 15 MPH

CHARACTERISTICS:

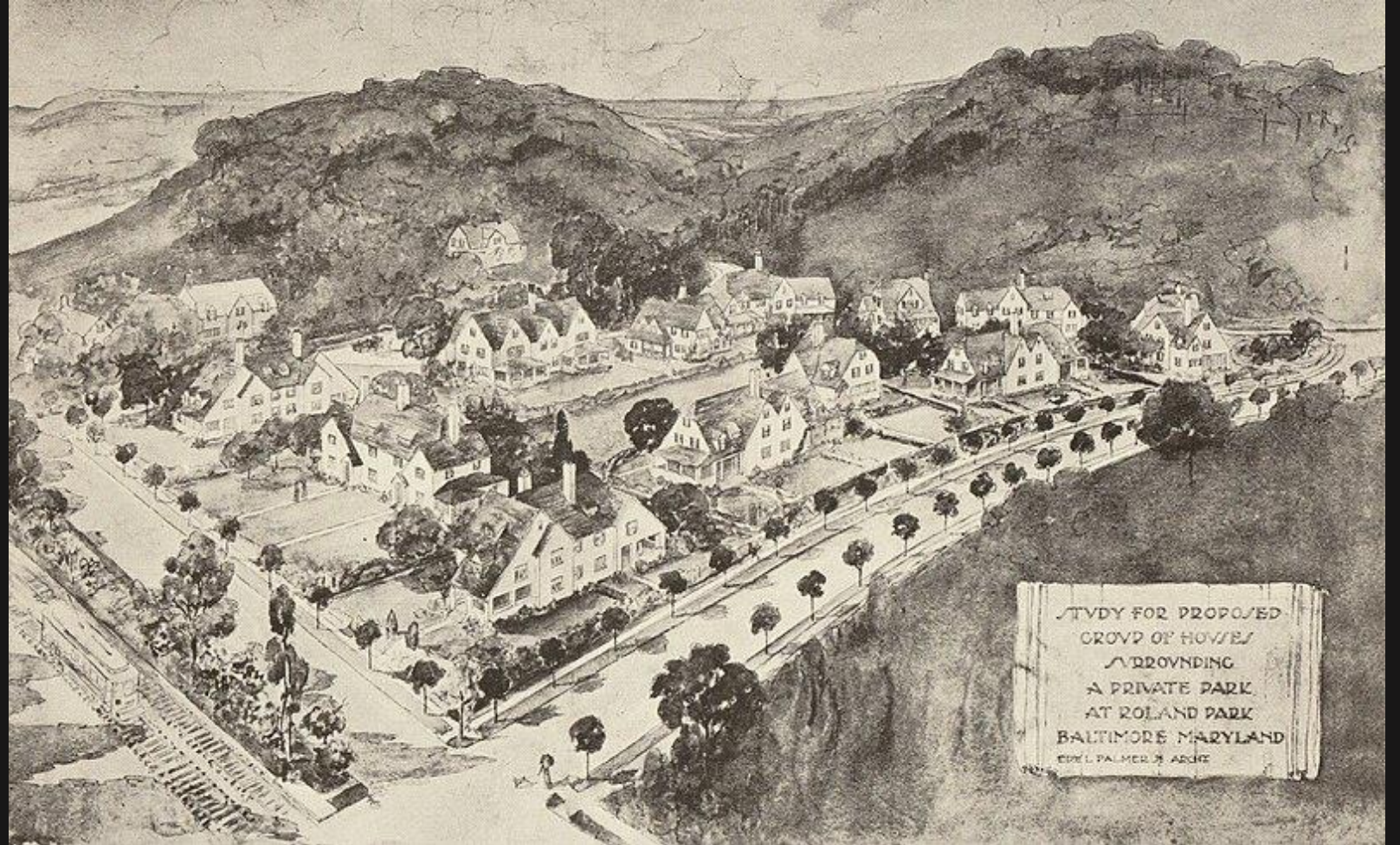
- Continuing separation of socio-economic classes
- Increase in suburban growth away from polluted older areas
- Still reliant on the city center



ROLAND PARK



Ohio Brass Collection - Illinois Railway Museum

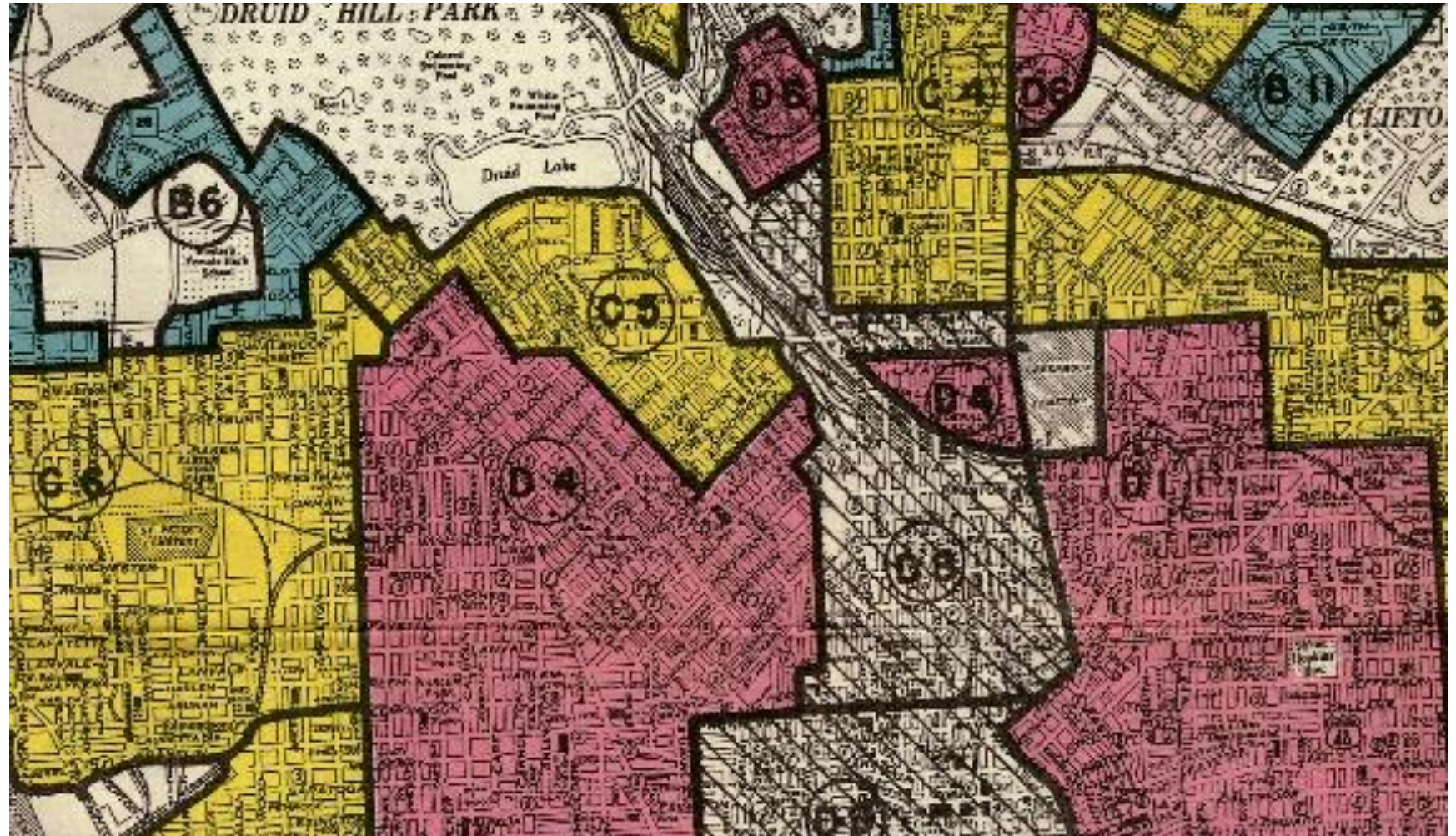


LAND USE TOOLS

ZONING

REDLINING

COVENANTS



AUTOMOBILE CITY (FREEWAY ERA)

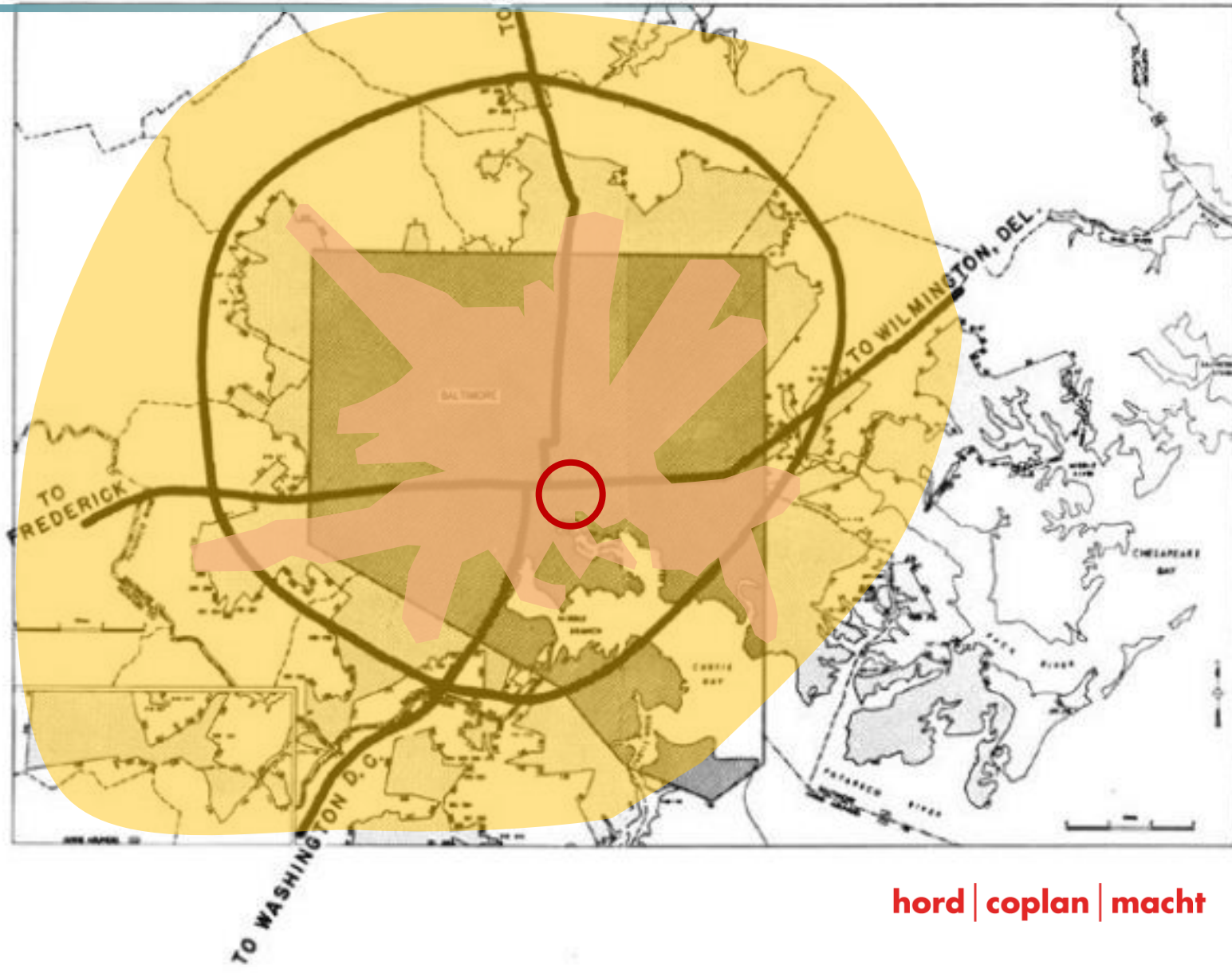
TIME PERIOD: 1945- Today

FORM: Sprawling, nearly unlimited growth between highways

SPEED: 60 MPH

CHARACTERISTICS:

- Increase separation of land uses and socio-economic classes
- Disinvestment in older urban neighborhoods
- Economy less reliant on center cities, growth of edge cities



TWO GLEN BURNIES



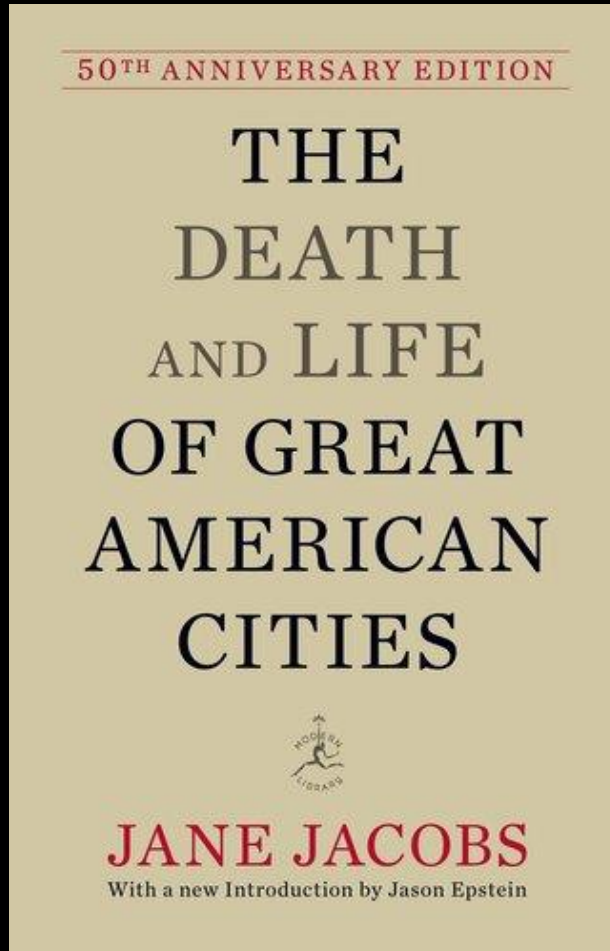
EXPANSION & CONTRACTION



LATE 20TH CENTURY U.S. CCRCs



RETHINKING THE ROLE OF NEIGHBORHOOD



03

An aerial photograph of a city, likely New York City, showing a dense urban landscape with numerous skyscrapers and residential buildings. The foreground features a large body of water, possibly a harbor or bay, with a few boats visible. The sky is clear and blue.

NEW CONCEPTS & MUTUAL GOALS

NEW URBANIST MOVEMENT



KENTLANDS, image by Amanda Andrade-Rhoades

15-MINUTE CITY

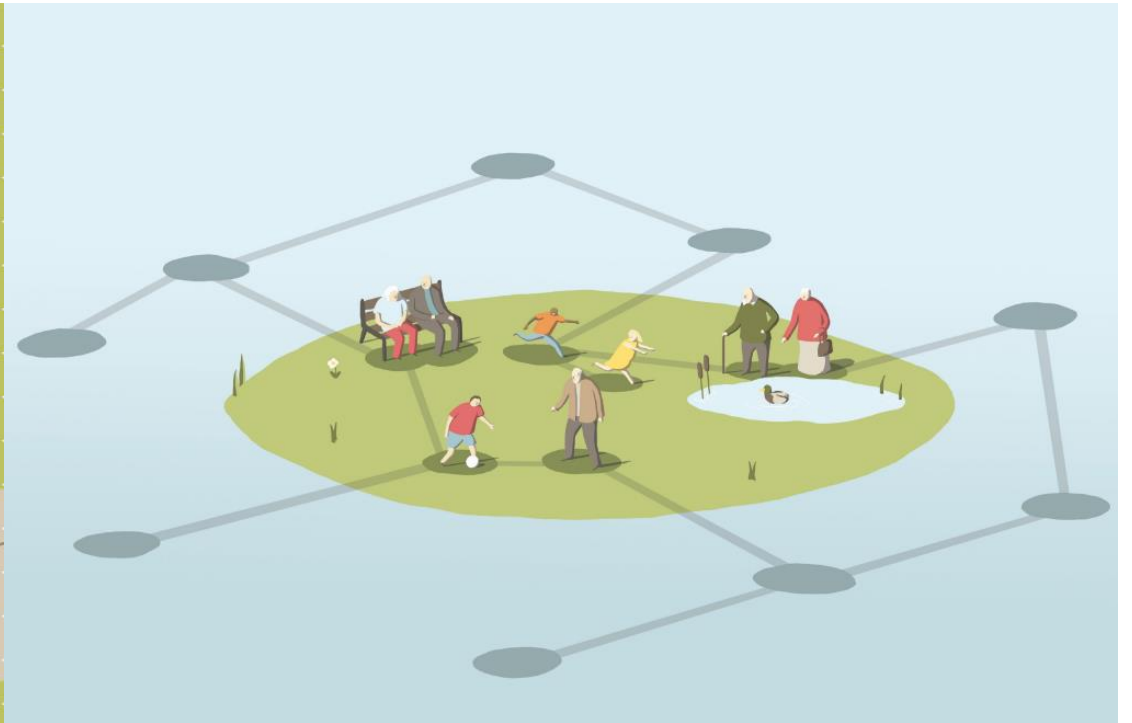
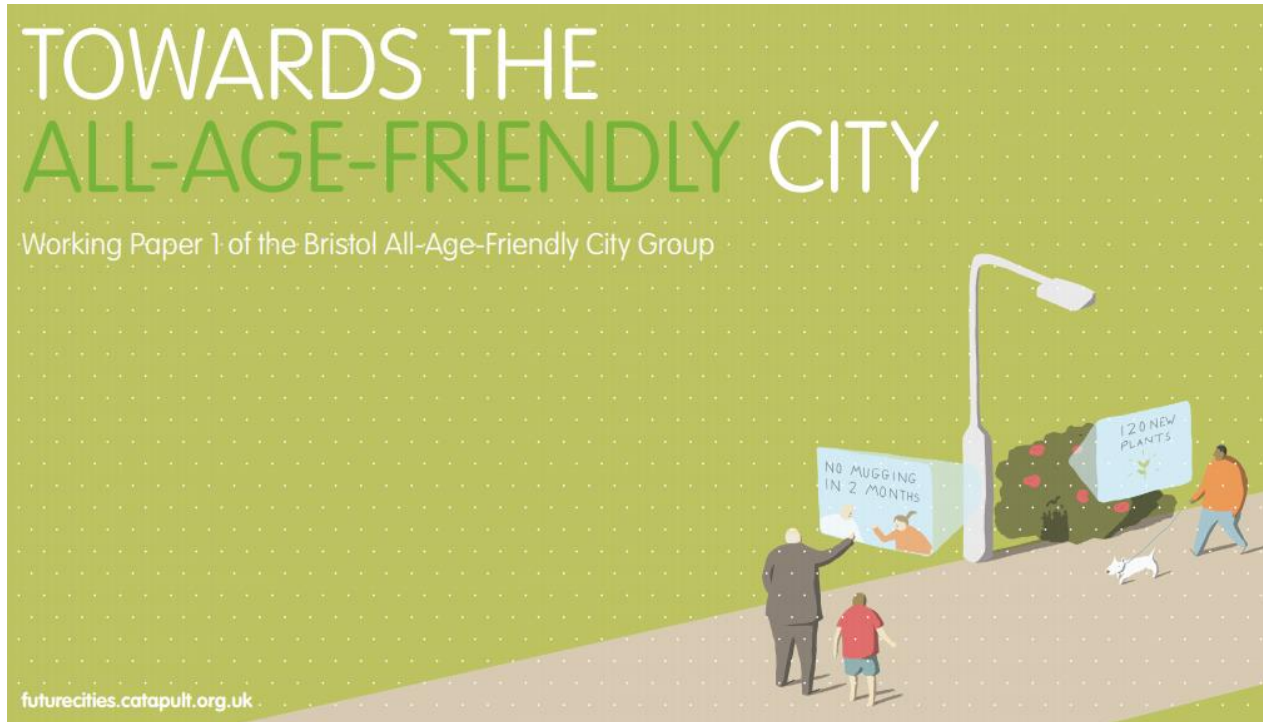


Proximity
Diversity
Density
Ubiquity

ALL-AGE FRIENDLY CITY

TOWARDS THE ALL-AGE-FRIENDLY CITY

Working Paper 1 of the Bristol All-Age-Friendly City Group



Source: Towards the All-Age-Friendly City, Future Cities Catapult, University of Bristol

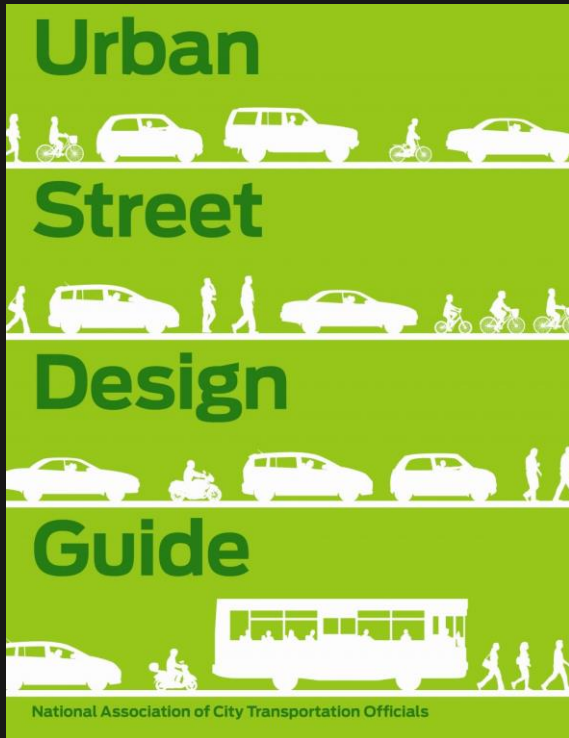
hord | coplan | macht

An aerial, grayscale illustration of a cityscape. The left half of the image is covered by a dark, vertical gradient that fades into the right half. The city features a mix of low-rise residential buildings, mid-rise commercial structures, and a dense skyline of skyscrapers in the background. A street with cars and pedestrians is visible in the lower right foreground.

COMPLETE STREETS

COMPLETE STREETS

Complete Streets is an approach to planning, designing, building, operating, and maintaining streets that enables safe access for all people who need to use them, including pedestrians, bicyclists, motorists and transit riders of all ages and abilities.





SAFER INTERSECTIONS

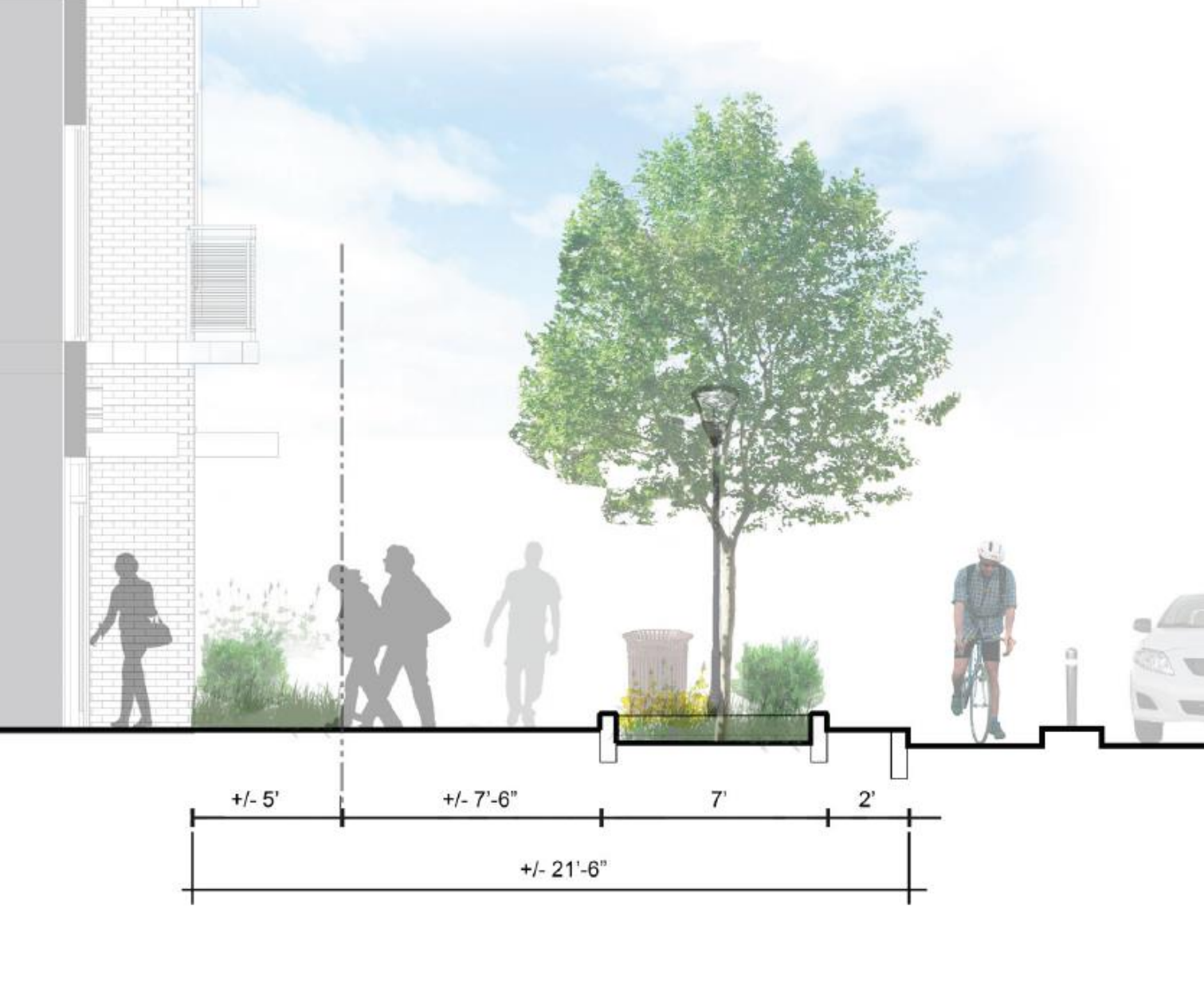
GREEN EDGES

STREET FURNITURE

IMPROVED SIDEWALKS

PERKINS HOMES – Baltimore, Maryland

Housing Authority of Baltimore, Beatty Development and McCormack Baron Salazar



PERKINS HOMES – Baltimore, Maryland

Housing Authority of Baltimore, Beatty Development and McCormack Baron Salazar

hord | coplan | macht



PERKINS HOMES – Baltimore, Maryland

Housing Authority of Baltimore, Beatty Development and McCormack Baron Salazar

hord | coplan | macht

An aerial photograph of a city, likely New York City, showing a dense urban landscape with various building heights and styles. The left side of the image is covered by a dark, semi-transparent gradient that fades into the city scene on the right. A thin blue horizontal line is positioned above the text.

HOUSING CHOICE





Age-Restricted Apartments

Rental

Homeownership

Courtyard Buildings

Townhouses &
Stacked Flats

Mixed-use Buildings

Mixed-Income Community



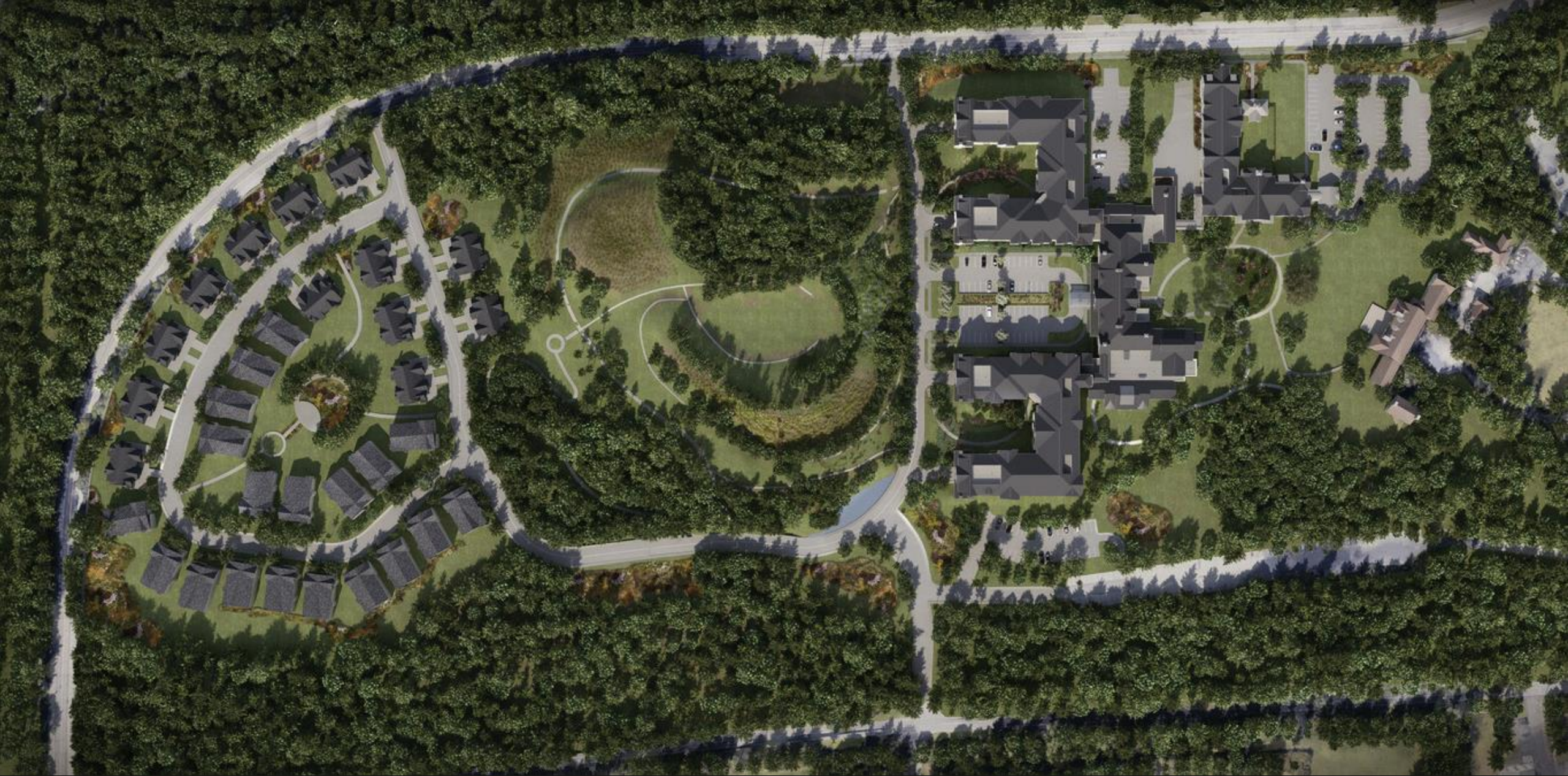
SOCIAL INFRASTRUCTURE



COMMUNITY ENGAGEMENT CENTER- Baltimore, MD

Client: University of Maryland Baltimore

hord | coplan | macht



SUNY BROADVIEW – Purchase, New York

Client: LCS Development LLC

hord | coplan | macht



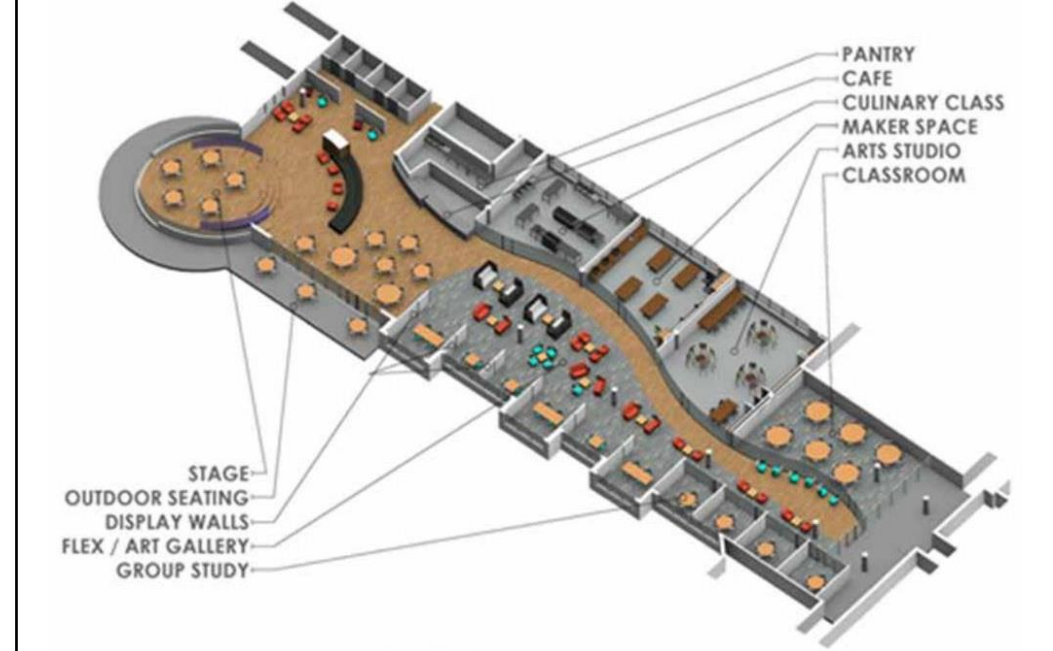
SUNY BROADVIEW – Purchase, New York

Client: LCS Development LLC

hord | coplan | macht



SUNY BROADVIEW – Purchase, New York
Client: LCS Development LLC



SUNY BROADVIEW – Purchase, New York

Client: LCS Development LLC

hord | coplan | macht



43 W. KING STREET – Lancaster, Pennsylvania
Client: Garden Spot Communities



43 W. KING STREET – Lancaster, Pennsylvania

Client: Garden Spot Communities

hord | coplan | macht

04

An aerial photograph of a city, likely New York City, showing a dense urban landscape with various buildings, streets, and green spaces. A solid blue vertical bar is positioned on the left side of the image, partially obscuring the city view. The word 'CONCLUSION' is written in a bold, teal-colored, sans-serif font in the bottom right corner, overlaid on the city image.

CONCLUSION

CONCLUSION

Engaging and active streets designed for pedestrians of all abilities provides the connective tissue for an intergenerational neighborhood.

Housing choice enables individuals and families to age in place within a neighborhood and encourages a more diverse community of all ages.

Creating places that support the shared social needs of a community and purposefully brings generations together is the cornerstone an intergenerational neighborhood.

BRIEF SUMMARY

**BUILDINGS AND NEIGHBORHOODS
CONSIDERATE OF AGING POPULATIONS
RESULT IN BETTER CITIES FOR EVERYONE**

Questions?

Submit your questions through the Q&A pod at the bottom of your screen.

Content-related questions will be answered during the Q&A portion as time allows. Any questions not answered during Q&A, will be answered and posted online within two (2) weeks.

Tech support questions will be answered by AIA staff.

Feedback survey

We encourage all attendees to complete the post course survey at <https://www.research.net/r/C9RDLC6> by **Friday September 23, 2022**, at 5pm ET.

Please email knowledgecommunities@aia.org if you have any questions.

Join DFA

aia.org/dfa

The screenshot shows the AIA KnowledgeNet website with a red header. The main navigation bar includes links for Home, Communities, Directory, Events, Browse, and Participate. A search icon and a 'Sign in' link are in the top right. The hero section features a large image of a modern staircase with the text 'Design for Aging'. Below this is a row of statistics: Community Home, Discussion (101), Library (118), Blogs (28), Our Events (3), and Members (4.5K). The left sidebar contains links for Leadership, Our History, Initiatives, DFAR Awards: 16th Edition, Past DFAR Awards, Research, and Local Chapters. The main content area has a 'Quick Links' section with 'Who we are' and 'COVID resources'. The 'Who we are' section describes the mission of the AIA Design for Aging (DFA) Knowledge Community. The 'COVID resources' section includes a link to 'Strategies for Safer Senior Living Communities'. On the right, there is a 'Manage Your Communities' button and an 'Upcoming Events' section. The events listed are 'DFA: Call for leadership applications' on Sep 9 and 'Live course: Intergenerational Living, Inclusive Communities: Strategies for Planning and Design' on Sep 19. A 'See All Events' link is at the bottom right.

AIA KnowledgeNet Search Sign in

[Home](#) [Communities](#) [Directory](#) [Events](#) [Browse](#) [Participate](#)

Design for Aging

Community Home Discussion 101 Library 118 Blogs 28 Our Events 3 Members 4.5K

[Leadership](#)
[Our History](#)
[Initiatives](#)
[DFAR Awards: 16th Edition](#)
[Past DFAR Awards](#)
[Research](#)
[Local Chapters](#)

Quick Links

Who we are

The mission of the AIA **Design for Aging** (DFA) Knowledge Community is to foster design innovation and disseminate knowledge necessary to enhance the built environment and quality of life for an aging society. This includes relevant research on characteristics, planning and costs associated with innovative design for aging. In addition, DFA provides outcome data on the value of these design solutions and environments.

COVID resources

Strategies for Safer Senior Living Communities
This resource includes strategies for dining facilities, amenity spaces, and individual units. [Download >](#)

Manage Your Communities

Upcoming Events

9 Sep **DFA: Call for leadership applications**
Sep 9 - Oct 17, (ET)

19 Sep **Live course: Intergenerational Living, Inclusive Communities: Strategies for Planning and Design**
Sep 19, 12:00 PM - 01:00 PM (ET)

[See All Events →](#)