

A decorative border featuring a dense arrangement of tropical plants and flowers. In the upper right, a vibrant red hibiscus flower is prominent. To its left, a large, light pink hibiscus flower with a yellow center is visible. The background is filled with various green leaves, including long, slender palm fronds and broad, dark green monstera leaves. The border is split by a white diagonal band that runs from the top left towards the bottom right, creating a clean space for the title text.

Best Practices: Restorative Mental Health In Correctional Environments

Copyright Notice

This presentation is protected by US and International Copyright laws. Reproduction, distribution, display and use of the presentation without written permission of the speaker is prohibited.

© The American Institute of Architects 2016

AIA/CES Compliance Statement

“AIA Knowledge” is a Registered Provider with The American Institute of Architects Continuing Education Systems (AIA/CES). Credit(s) earned on completion of this program will be reported to AIA/CES for AIA members. Certificates of Completion for both AIA members and non-AIA members are available upon request.

This program is registered with AIA/CES for continuing professional education. As such, it does not include content that may be deemed or construed to be an approval or endorsement by the AIA of any material of construction or any method or manner of handling, using, distributing, or dealing in any material or product.

Questions related to specific materials, methods, and services will be addressed at the conclusion of this presentation.

AIA/CES Reporting Details

All attendees will be eligible to receive AIA continuing education for attending this course by completing the electronic form sent via email after the conference.

Continuing education questions can be directed to aaaj@aia.org.

Course Description

This presentation will discuss high-quality correctional environments and how innovative design and programming practices can support mental health and well-being in justice, healthcare and mental health facilities.

Learning Objectives

1. Sustainable Design - Daylight, access to natural views
2. Energy Efficiency
3. Building codes (construction techniques)
4. Building security - Space programming, classrooms away from dayrooms, material selection to deal with acoustics



Panel:

Mike Retford, AIA – HOK

Alan Bright, FAIA – HOK

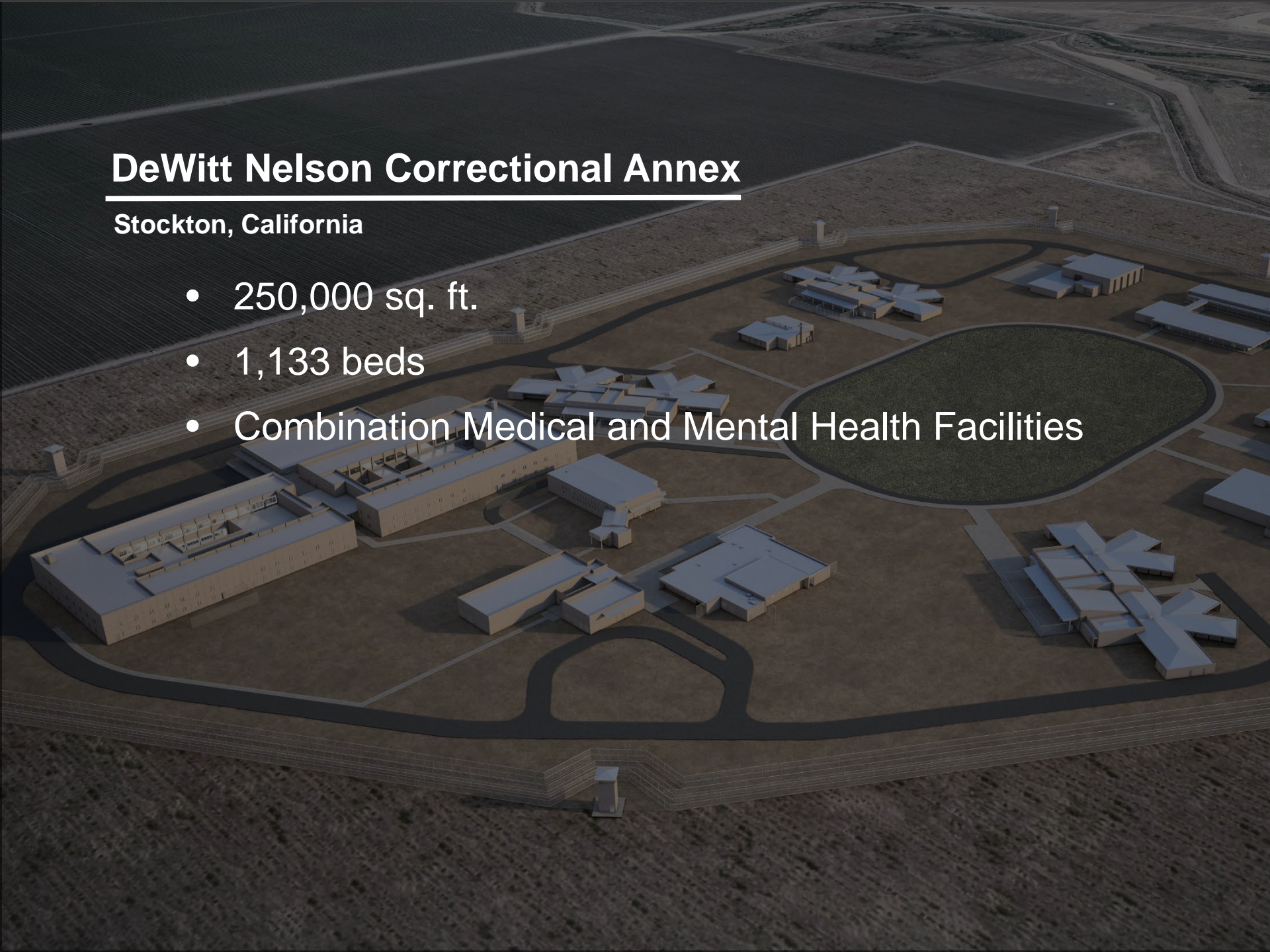
Michele Hutchinson – HOK

Dave Titus – Lieutenant San Mateo County Sheriff's Office

DeWitt Nelson Correctional Annex

Stockton, California

- 250,000 sq. ft.
- 1,133 beds
- Combination Medical and Mental Health Facilities



CALIFORNIA

A satellite map of California showing county boundaries as thin green lines. The word "CALIFORNIA" is centered in the upper half in large white capital letters. Two white dots mark specific locations: one on the San Francisco Peninsula labeled "San Francisco" and another in the Central Valley labeled "Stockton". The map shows the Pacific Ocean to the west, the Sierra Nevada mountains to the east, and various inland lakes and rivers.

San Francisco

Stockton





Maple Street Correctional Center

San Mateo County, California

- 260,000 sq. ft.
- 744 rated beds
- Transitional housing – 88 beds
- Unique program elements
 - Classrooms
 - Computer labs
 - Centralized recreation yard
 - Culinary program
 - TAILS program

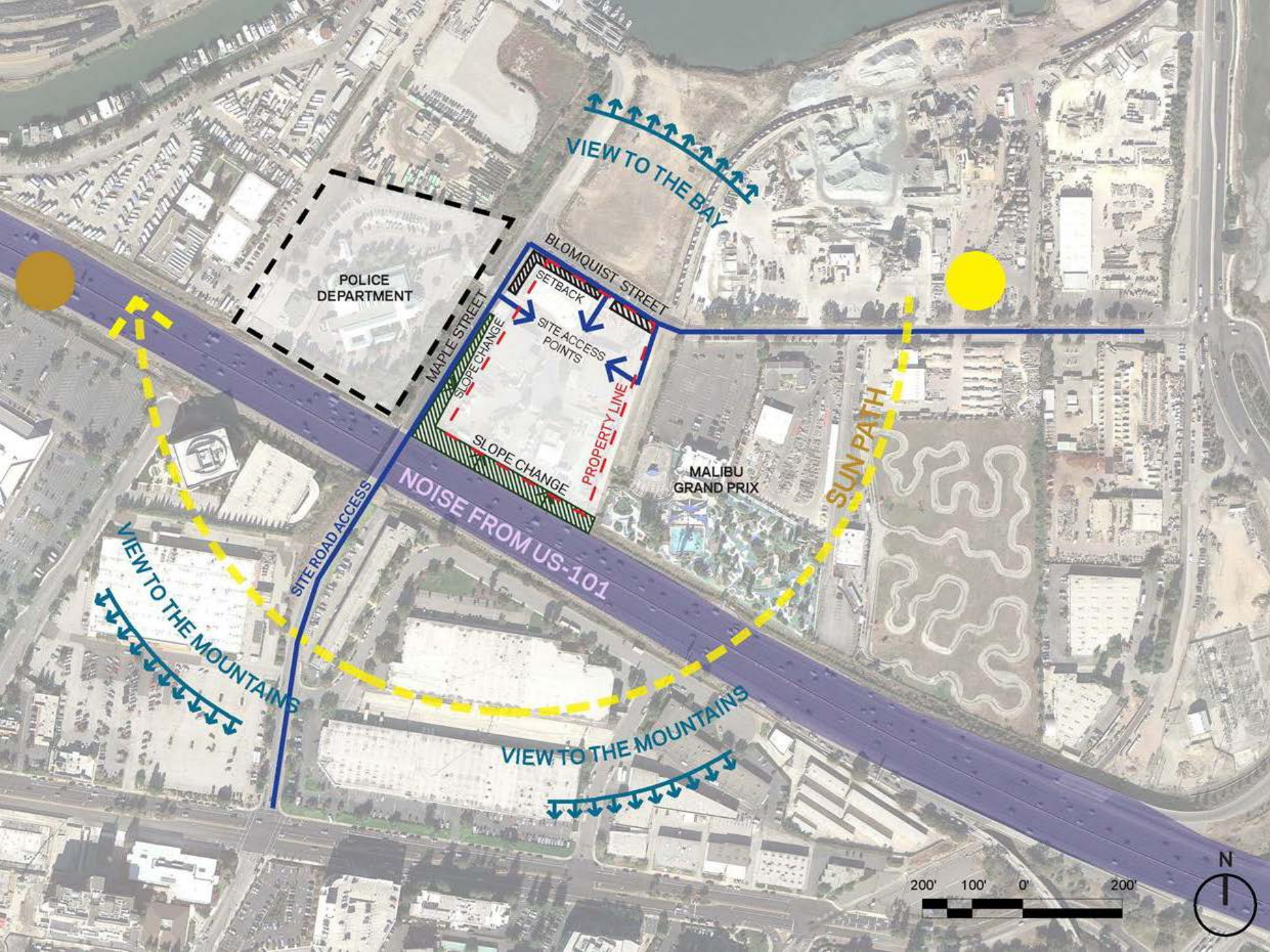


A satellite map of California with county boundaries outlined in light green. The word "CALIFORNIA" is centered in the upper half of the state in large white capital letters. In the lower-left portion of the state, two white circular markers are placed. The first marker is on the San Francisco Peninsula, with the text "San Francisco" to its right. The second marker is further south, in the East Bay area, with the text "Maple Street Correctional Facility" to its right. The map shows the Pacific Ocean to the west and the Sierra Nevada mountains to the east.

CALIFORNIA

San Francisco

Maple Street
Correctional Facility



VIEW TO THE BAY

POLICE
DEPARTMENT

BLOMQUIST STREET

MAPLE STREET

SETBACK

SITE ACCESS
POINTS

SLOPE CHANGE

PROPERTY LINE

MALIBU
GRAND PRIX

SUN PATH

NOISE FROM US-101

SITE ROAD ACCESS

VIEW TO THE MOUNTAINS

VIEW TO THE MOUNTAINS

200' 100' 0' 200'





Water Dependent Development and Recreation Parking

Local Market (Example)

Existing Utility Station

Wetlands Area

Water Dependent Development

Boardwalk Connection

Existing Residential Community

Aquatic Center

Boat Launch

Boat Water Parking

Boat House

Waterfront Walk, East

Boat Ramp

Boat Dock

Boat Lift

Boat Storage

Boat Repair

Boat Maintenance

Boat Washing

Boat Storage

Boat Repair

Boat Maintenance

Boat Washing

Boat Storage

Boat Repair

Boat Maintenance

Boat Washing

Boat Storage

Boat Repair

Boat Maintenance

Boat Washing

Boat Storage

Boat Repair

Boat Maintenance

Boat Washing

Boat Storage

Boat Repair

Boat Maintenance

Boat Washing

Boat Storage

Promenade

Recreation Field 2

Shaded sitting areas

Recreation Field 1

Field Lighting

Shaded sitting areas

Existing Site

Granite Rock Site

Bay Trail Connection

Office Buildings 1 & 2

Parking Structures 2 & 3

Office Buildings 2&4

Wetlands Area

Residential Development

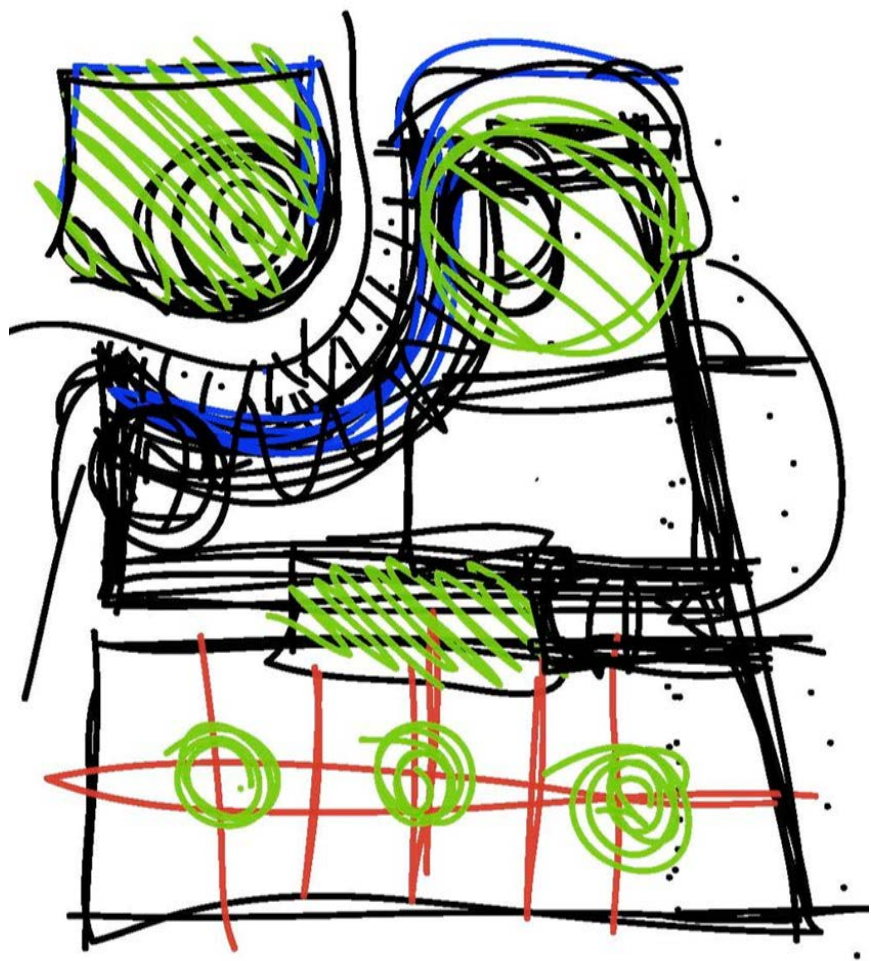
Existing Redwood City Police Station

Existing Maple Street Correctional Facility

Parking Structure 1

Boat ramp

Existing Bay Trail

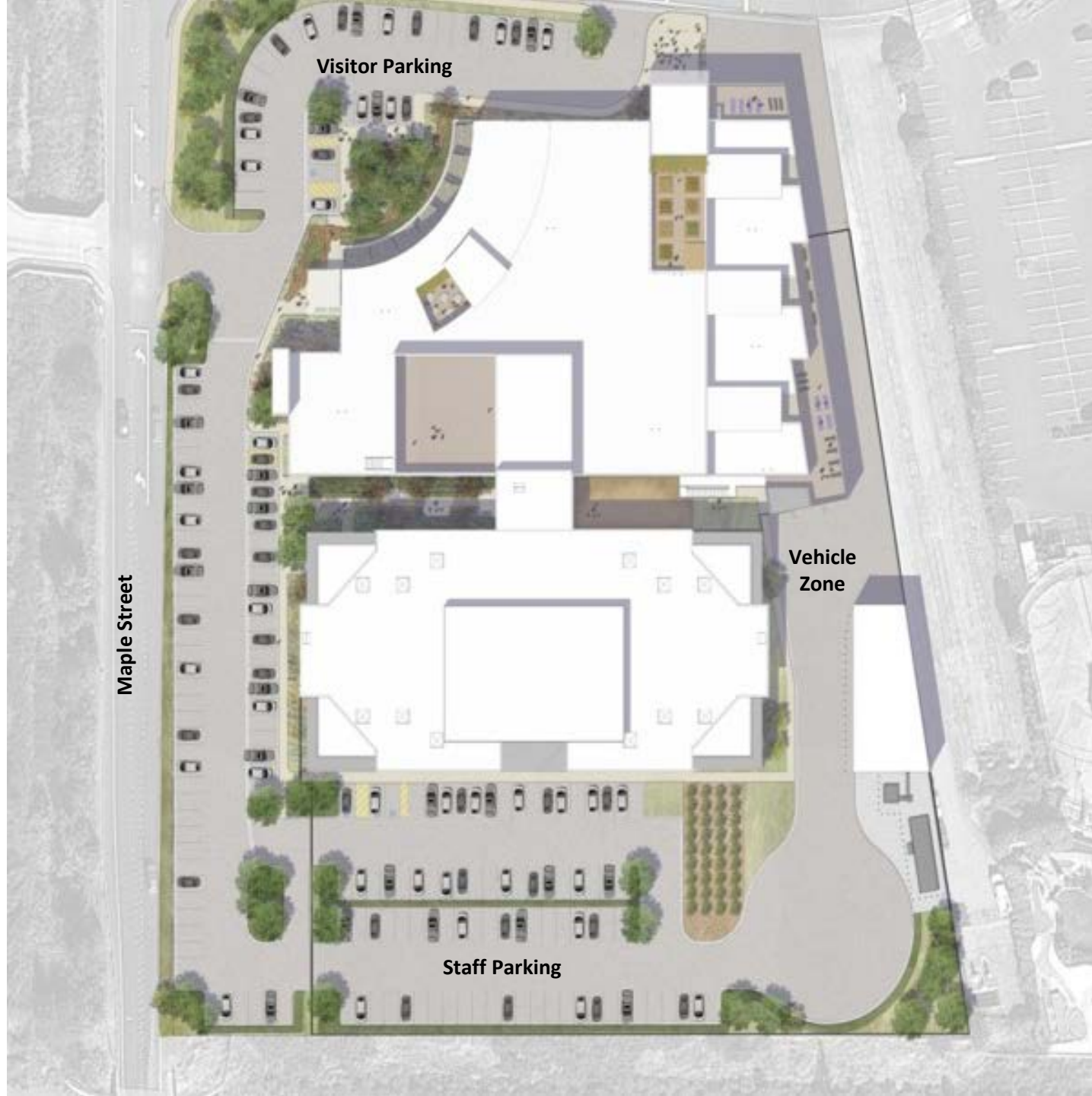


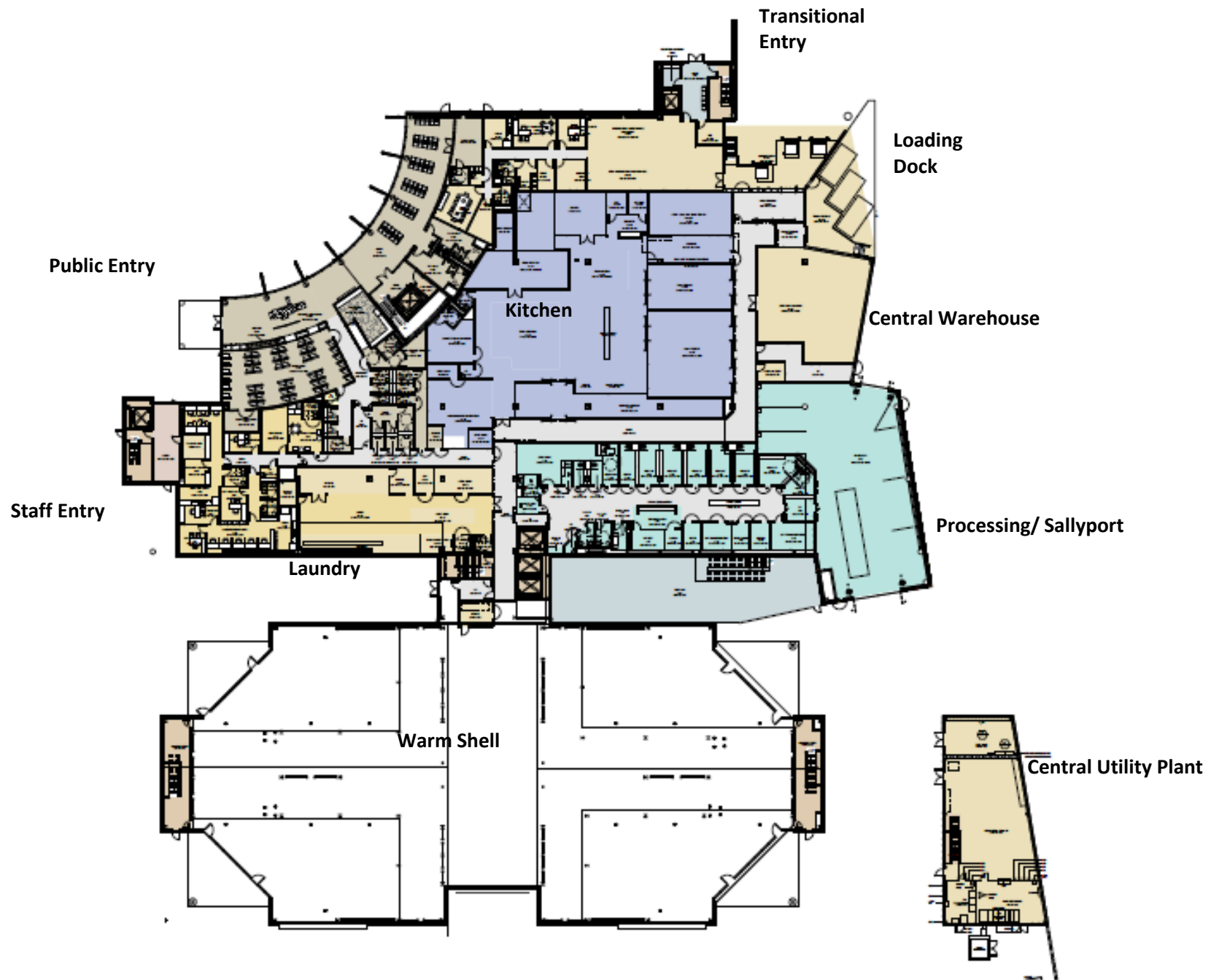
Maple Street

Visitor Parking

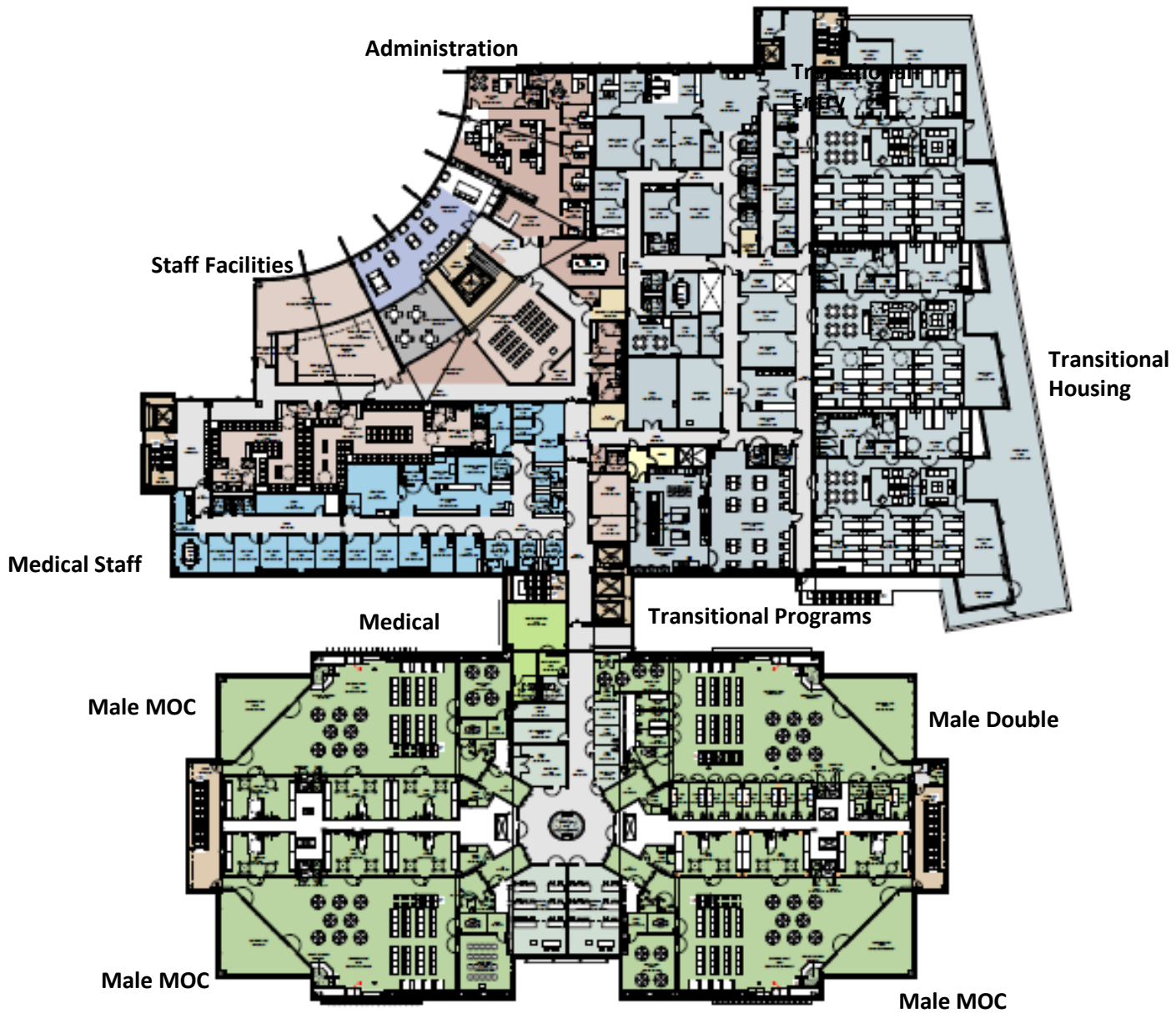
Vehicle
Zone

Staff Parking

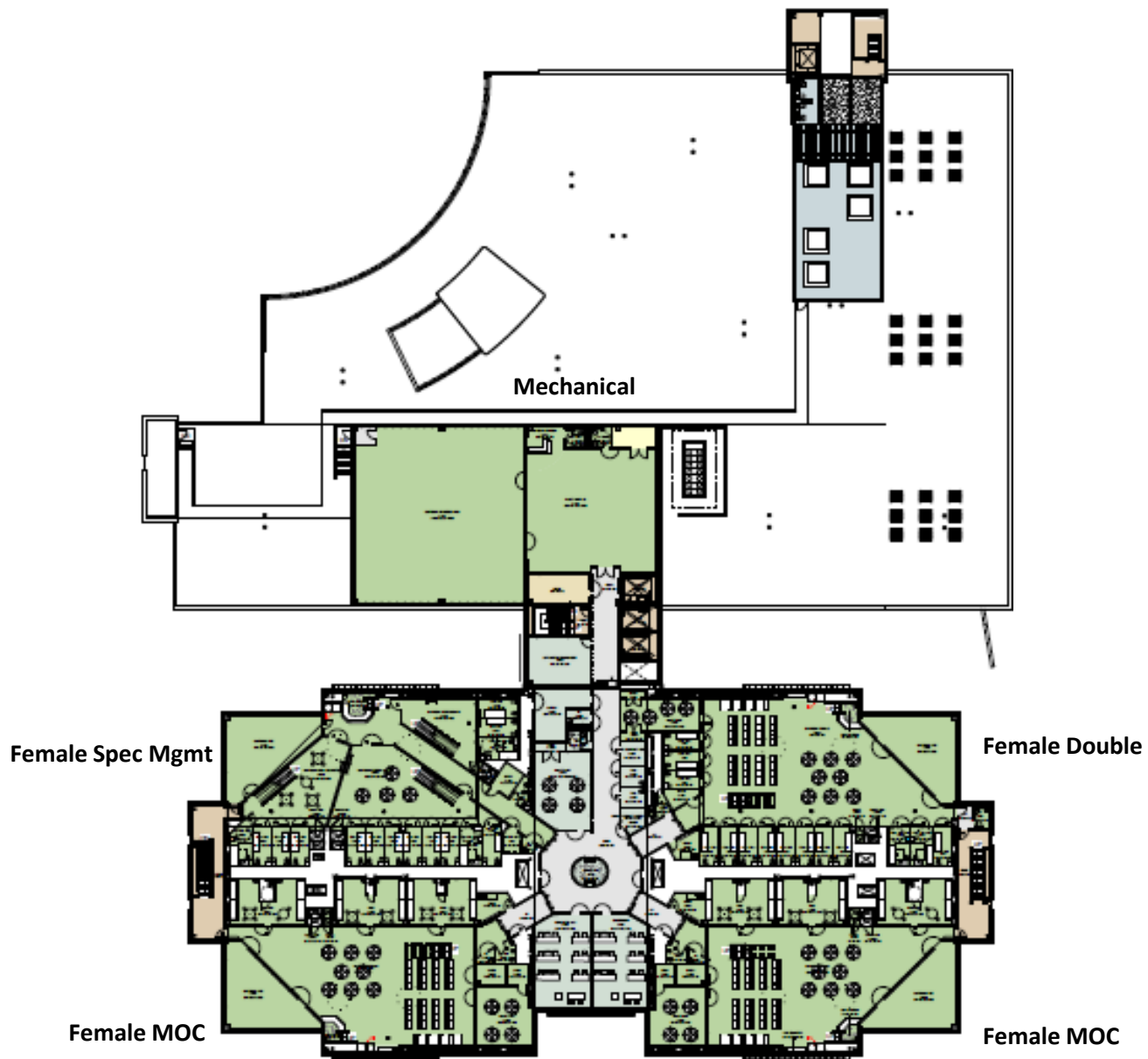




Level 1



Level 2



Level 3



"When I showed up this morning , I had to pinch myself . I Couldn't believe how incredibly beautiful it was."

- San Mateo County Supervisor Tissier

- Maple Street Correctional Center Awarded SVBJ Structures Best New Public Civic Building



- LEED Gold
- Energy reduction 35%
- Energy cost savings 27%
- Indoor water use reduction 55%
- Outdoor potable water use reduction 100%













2-VALLEY

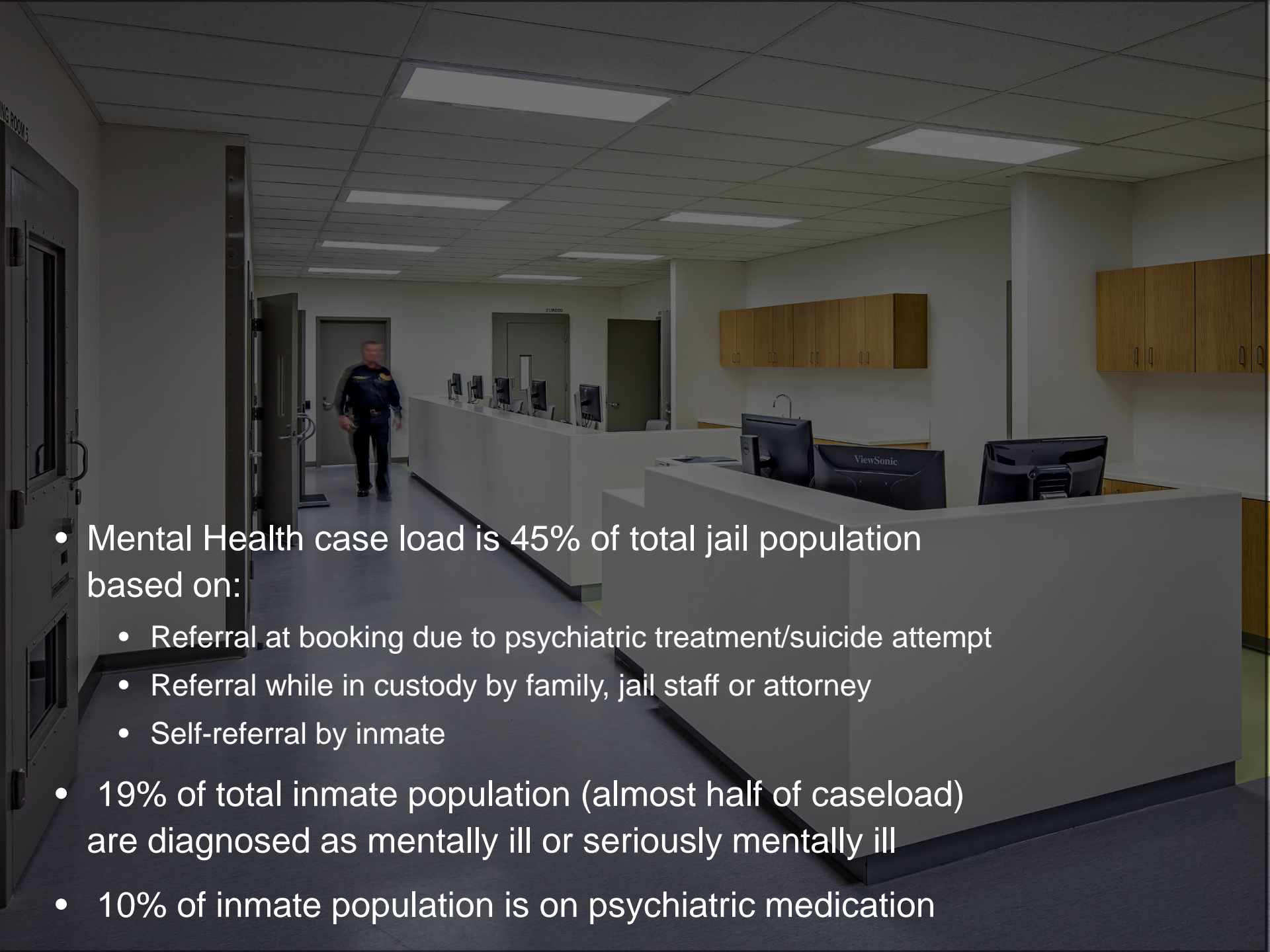


8

3







- Mental Health case load is 45% of total jail population based on:
 - Referral at booking due to psychiatric treatment/suicide attempt
 - Referral while in custody by family, jail staff or attorney
 - Self-referral by inmate
- 19% of total inmate population (almost half of caseload) are diagnosed as mentally ill or seriously mentally ill
- 10% of inmate population is on psychiatric medication



STORAGE

MULTI-PURPOSE ROOM





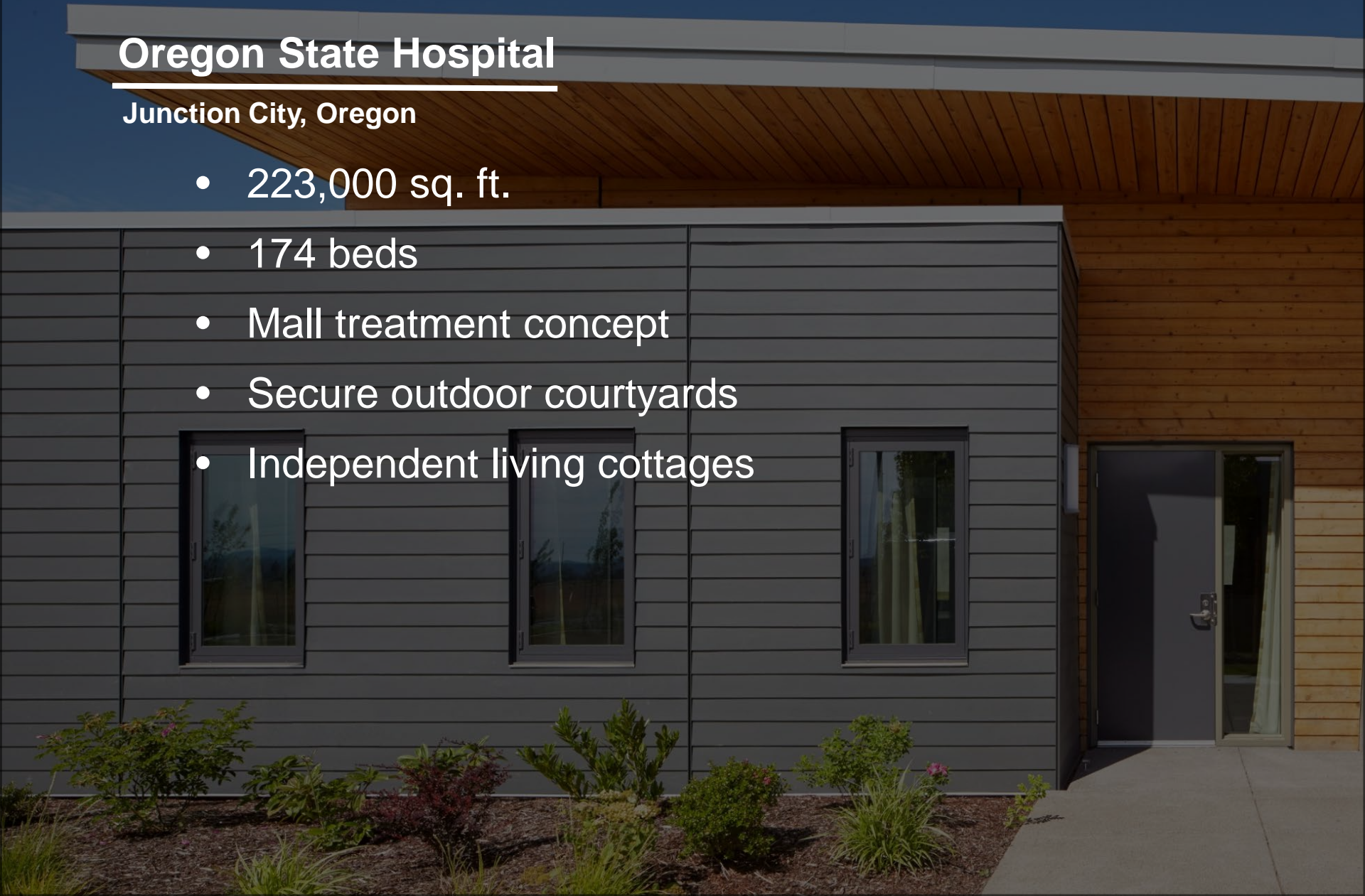


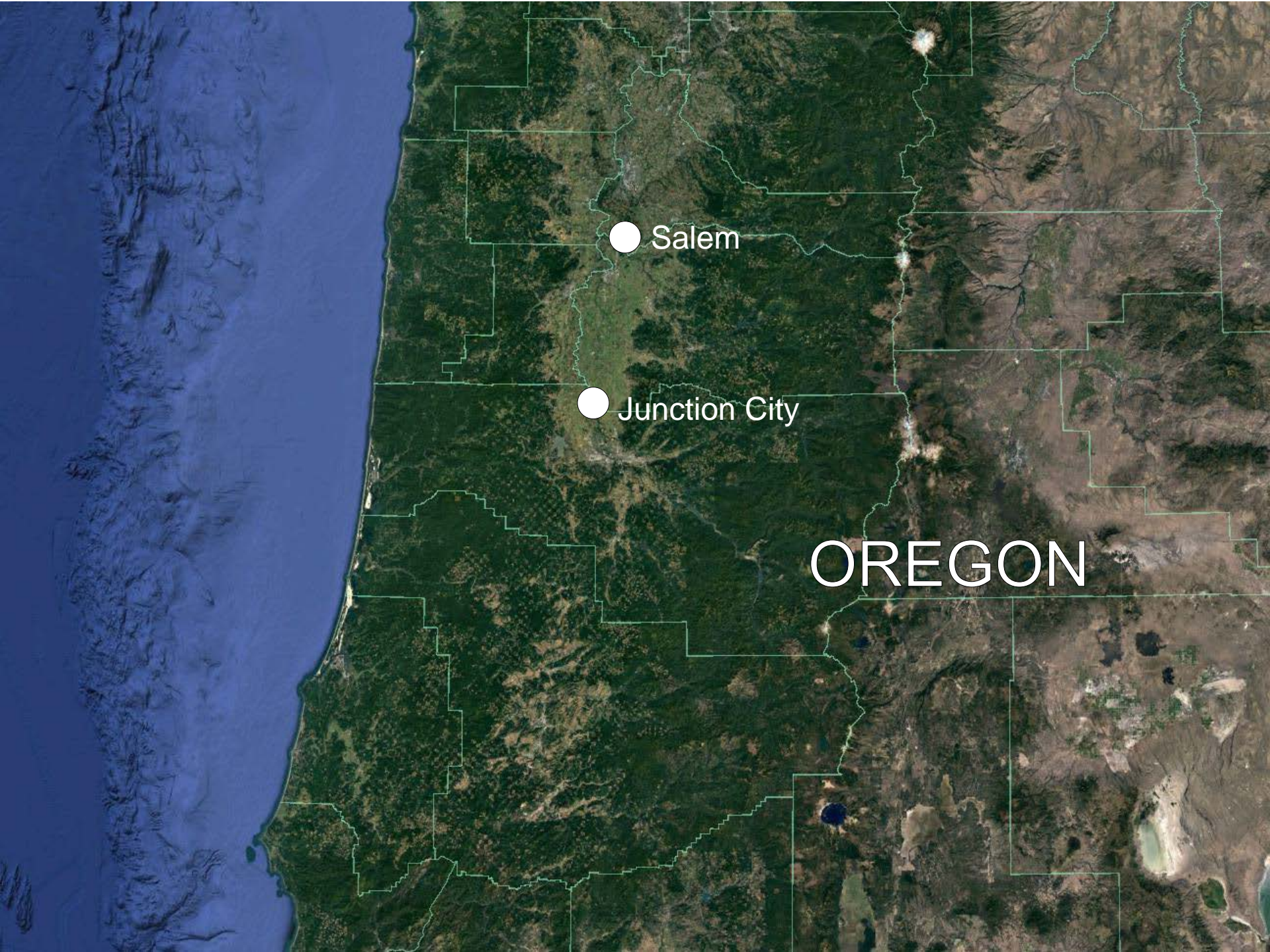


Oregon State Hospital

Junction City, Oregon

- 223,000 sq. ft.
- 174 beds
- Mall treatment concept
- Secure outdoor courtyards
- Independent living cottages

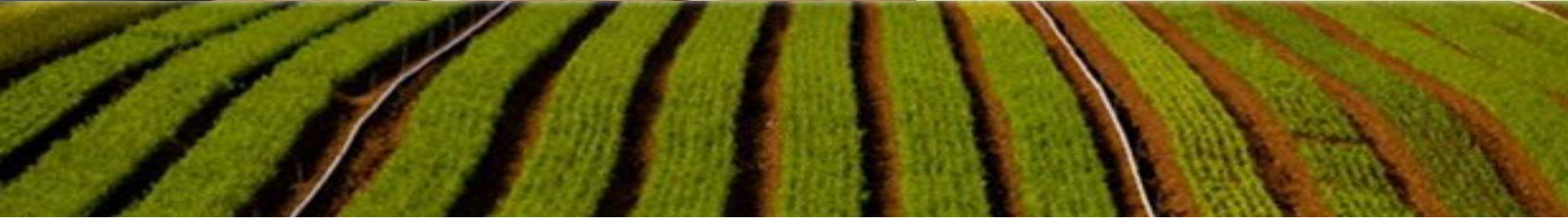




● Salem

● Junction City

OREGON











feeling wanted

It was a beautiful day
A shining sun in the sky
Nobody was around
Mr. Smith showed up
We had a picnic vacation

perfect po
Sunshine rolling down and
into the trees, hills and meadows

OURAGE
FORWARD

RECO

RECO

SINGING
HUMANITY

FEARLESS
HUMANITY

WATER
HUMANITY

no trafficking
health

I like to swim
downstream
at an angle
I want to make
it to the bank

I am awesome, my life is epic
and everybody is worth the







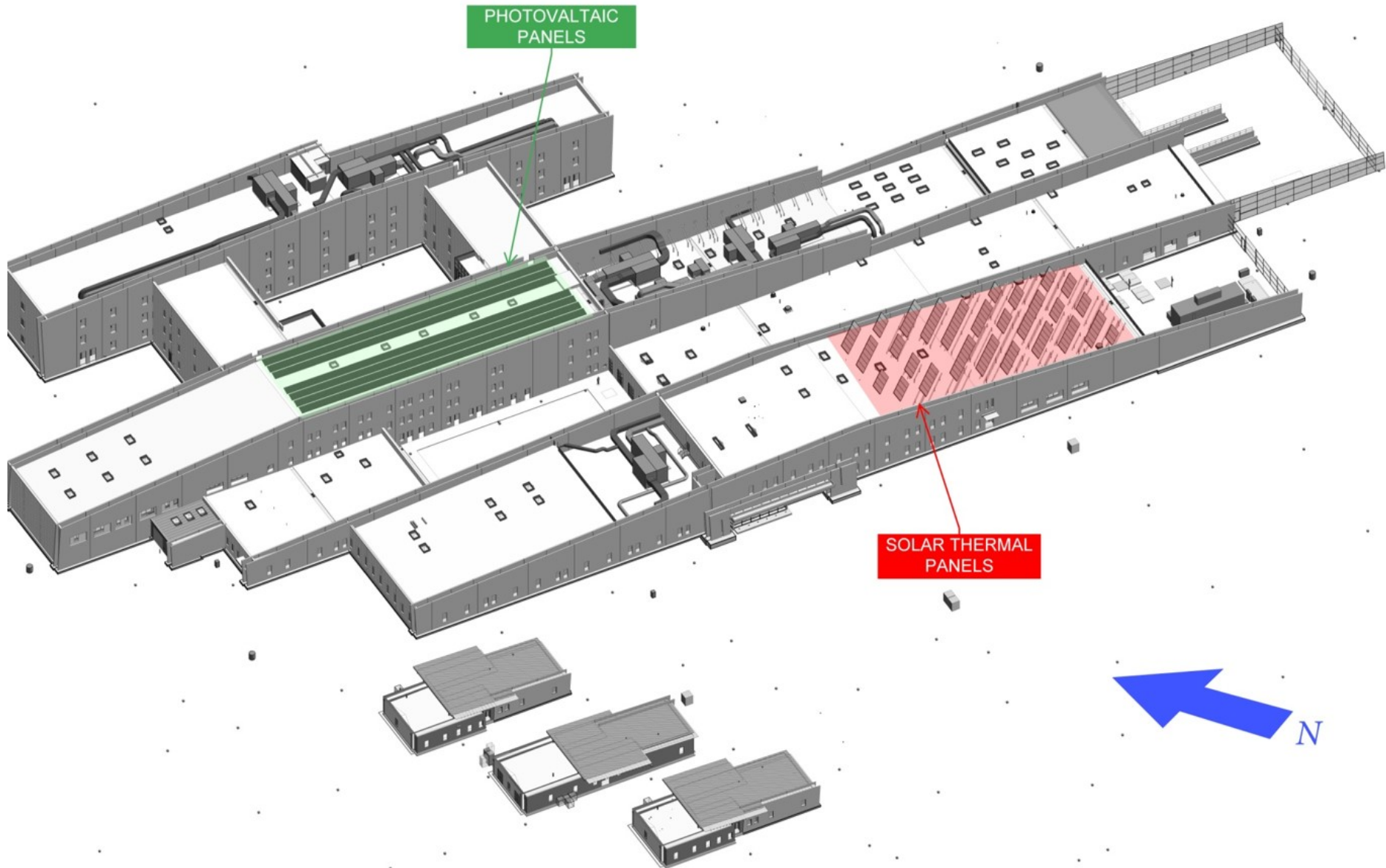




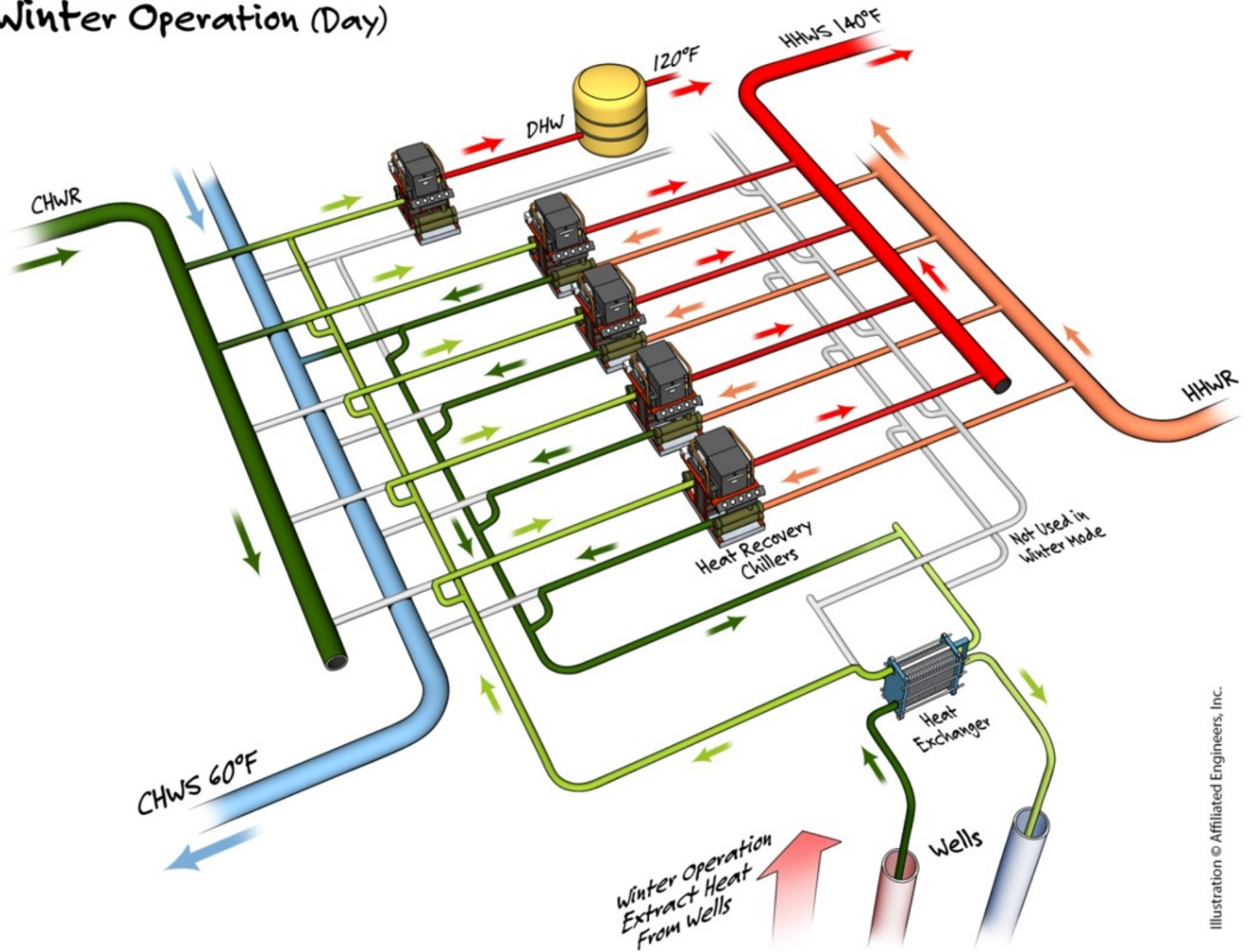


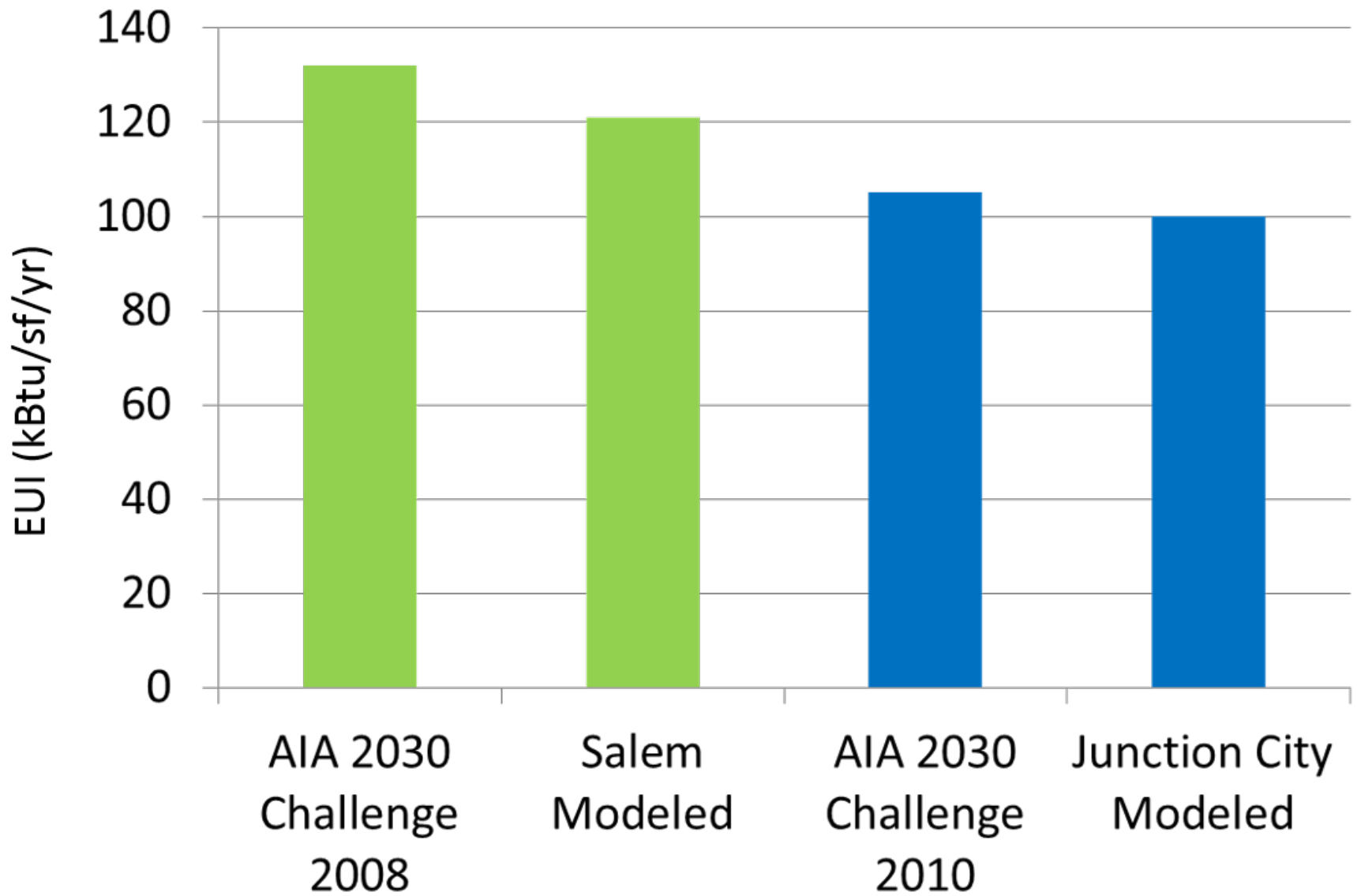






Winter Operation (Day)



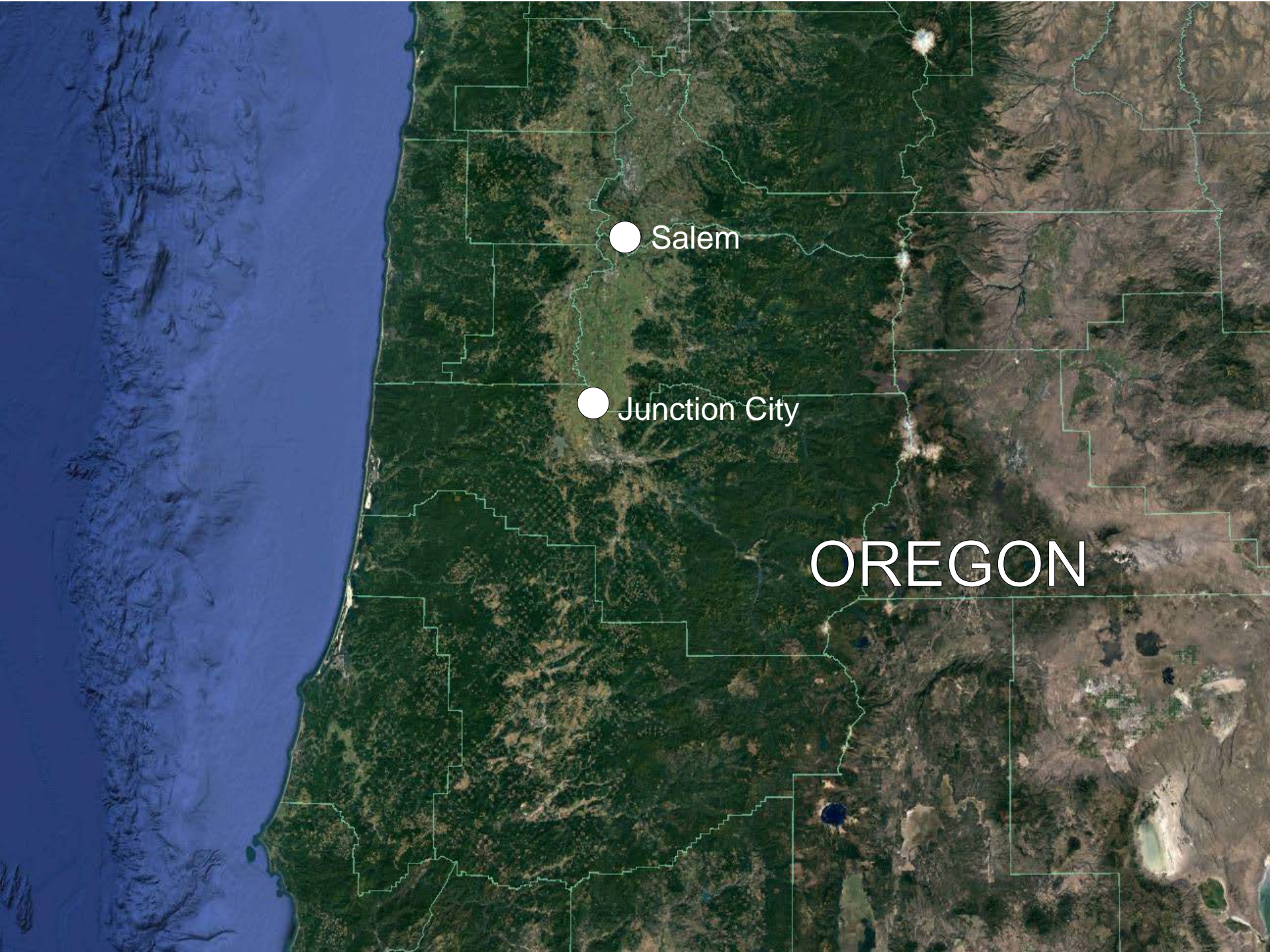


Oregon State Hospital

Salem, Oregon

- 850,000 sq. ft.
- 620 beds
- Mall treatment concept
- Secure outdoor courtyards





● Salem

● Junction City

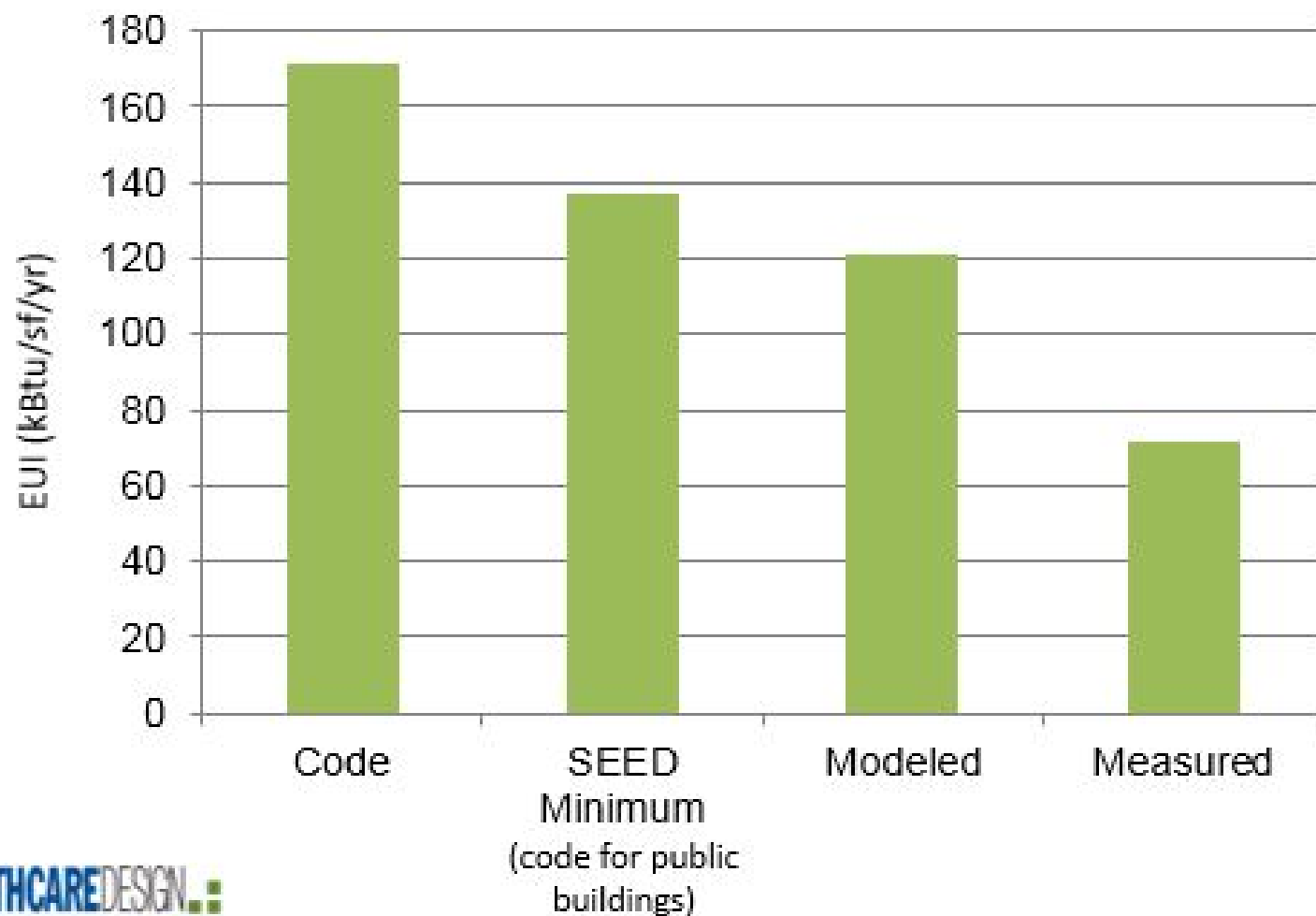
OREGON







Salem Hospital – Energy Usage Intensity



A photograph of a modern, curved interior space, likely a waiting area or lounge. The ceiling is made of horizontal wooden slats with recessed circular lights. The walls are clad in light-colored wood panels, with some sections featuring large windows. Rows of white, slatted airport-style seating are arranged in the center of the space. The floor is a polished, speckled material. The overall atmosphere is clean, bright, and contemporary.

Thank You