

Meridian Center for Health
Seattle, Washington



SQ FT
44,800 BGSF



OWNER/AFFILIATION
Neighborcare Health



ARCHITECT(S)
NBBJ



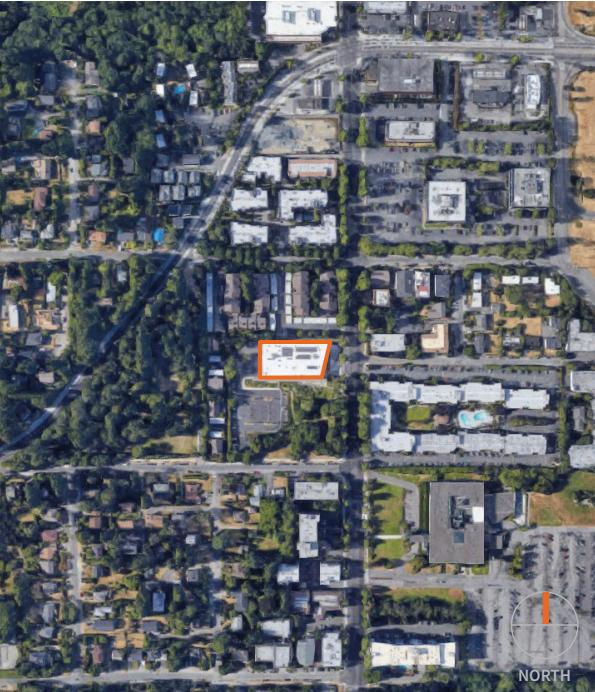
COMPLETION DATE
2015



LANDSCAPE AROUND THE BUILDING



OUTDOOR PATIO



SITE MAP

ABOUT | DESIGN INTENTIONS

Partially funded by a federal grant, the Meridian Center for Health is a first of its kind: **an integrated, one-stop model for health treatment and prevention for underserved Seattle-area residents.** Uniting three health organizations under the same roof, the center provides low- to no-cost medical, dental, and mental health services for adults and children. Design elements include an open floor plan, a dramatic feature stair in the lobby, and a range of team and community spaces that remain available for neighborhood organizations after hours. **The Center is tracking to receive LEED Gold certification.**



GARDEN ON THE SOUTH SIDE



GARDEN AT SOUTHEAST CORNER

Meridian Center for Health

Seattle, Washington

Vision

The Meridian Center for Health seamlessly integrates an array of typically siloed clinical and social services—including medical, dental, infant, maternity, behavioral, and recovery programs—for the underprivileged in underserved Seattle neighborhoods.

Breakthrough

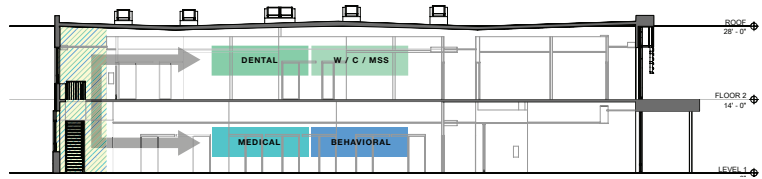
Understanding and addressing the diverse determinants to health required thinking more broadly about what constitutes healthcare and how it is practiced. Meeting patients where they are—by uniting three different organizations—bridges the gaps to wellness by providing the services necessary to support a fulfilling life.

Value

The Meridian Center is more than a place to go when one is ill—but also a place to go when one is well. To create an environment of health and wellbeing, the project addresses not just clinical needs in isolation, but also the social determinants of wellness, while embracing the rejuvenating aspects of nature through a restored site.

Insight

Eliminating wasteful handoffs between healthcare organizations promotes healthier outcomes. Creating a model where multiple services come to the patient during a visit instead of numerous follow-ups allows for a more accessible network of resources for living a healthy life.



BUILDING VERTICAL AND HORIZONTAL CIRCULATION



LOBBY / RECEPTION

SITE PLAN



DESIGN CONCEPT

A Site of Healing

The Meridian Center for Health is operated by Neighborcare Health and partially funded by a federal Health Resources Services Administration (HRSA) grant. It replaced a former public health clinic built in 1980. The site was repurposed to provide easier access and more open space for patients and their families, while enhancing an existing public park at the southeast corner.

1. Drop-off
2. Bio-swale
3. Retention Pond
4. Meadow
5. Community Artwork Loop Trail
6. Mineral Springs Park



Meridian Center for Health

Seattle, Washington

A Warm Welcome

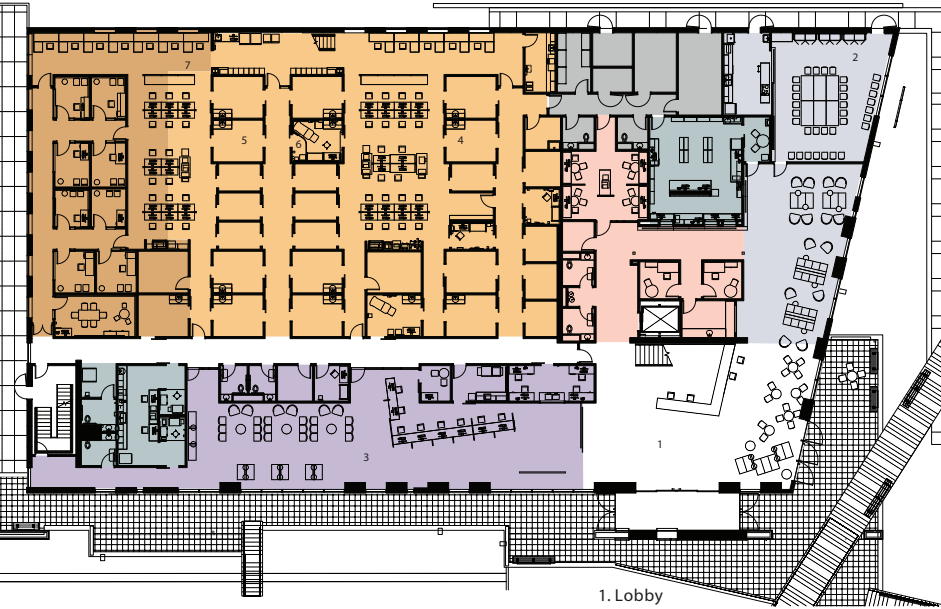
The clinic fosters a “**no wrong door**” philosophy to serve a patient population that speaks more than 65 languages via multilingual signage and wayfinding. By providing a welcome zone as the one point of entry, the clinic creates a fully integrated and united public face.

A simplified patient journey reduces patients’ stress and increases trust in the care team, while seamlessly connecting complex health services.

KEY

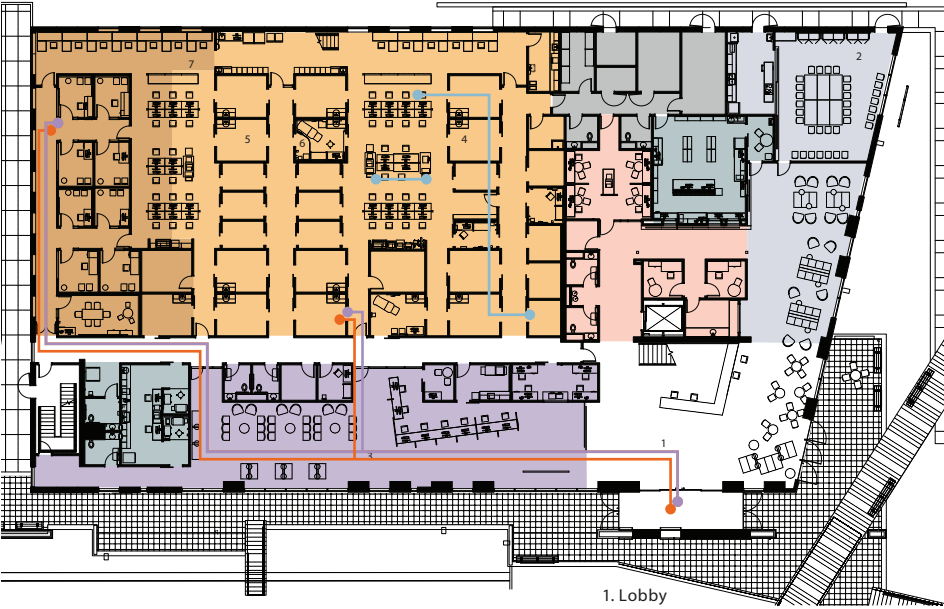
- Primary Care
- Recovery Services
- Registration
- Community
- Social Services
- Phlebotomy
- Support

GROUND LEVEL:



- 1. Lobby
- 2. Community / teaching rooms
- 3. Waiting
- 4. Medical clinic
- 5. Recovery services
- 6. Exam / consult room
- 7. Integration zone
- 8. Women, infant and child services

TRAVEL DISTANCE ANALYSIS



- 1. Lobby
- 2. Community / teaching rooms
- 3. Waiting
- 4. Medical clinic
- 5. Recovery services
- 6. Exam / consult room
- 7. Integration zone
- 8. Women, infant and child services

KEY SPACES:

- ▶ Exam Rooms (86 sf or 119 sf)
- ▶ Staff Work core (Core1: 472 sf; Core 2: 625 sf)
- ▶ Consult Rooms (64 sf)

DEPARTMENTAL GROSS SQUARE FOOT TAKE-OFFS

	Net	Gross	
Primary Care	3608 SF	6475 SF	1.79
Recovery Services	1564 SF	2629 SF	1.68
Registration	1447 SF	2945 SF	2.03
Community	1654 SF	2093 SF	1.27
Social Services	759 SF	1465 SF	1.93
Phlebotomy	1094 SF	1475 SF	1.34
Support	788 SF	1062 SF	1.35

TRAVEL DISTANCE ANALYSIS

- Patient 129 ft - 250 ft
- Family 129 ft - 250 ft
- Staff 12 ft - 78 ft

Meridian Center for Health

Seattle, Washington

Whole Person. Whole Health.

Eliminating waste—redundancy and repetition—is a central design goal of the Meridian Center for Health. Rather than referring patients to various specialists across medical clinics and campuses, different healthcare providers can meet patients right where they are—even together simultaneously in the same exam room. Beyond clinic areas, there are spaces for community resources that stay open into the evening—from conference rooms, housing placement assistance, job training, resume writing, nutrition advice and cooking classes. This one-stop-shop, holistic approach minimizes registration paperwork, travel and wait times for patients. During the day these spaces double as group education and therapy rooms.

Flexible features, such as large-format sliding and pivoting doors allow these spaces to work individually or together, to cater to the diversity and variation of groups looking to support this patient population. As a result, the center is able to operate as a true community asset, breaking out of the traditional boundaries of healthcare and offering a solution to a more holistic vision of health and wellness.

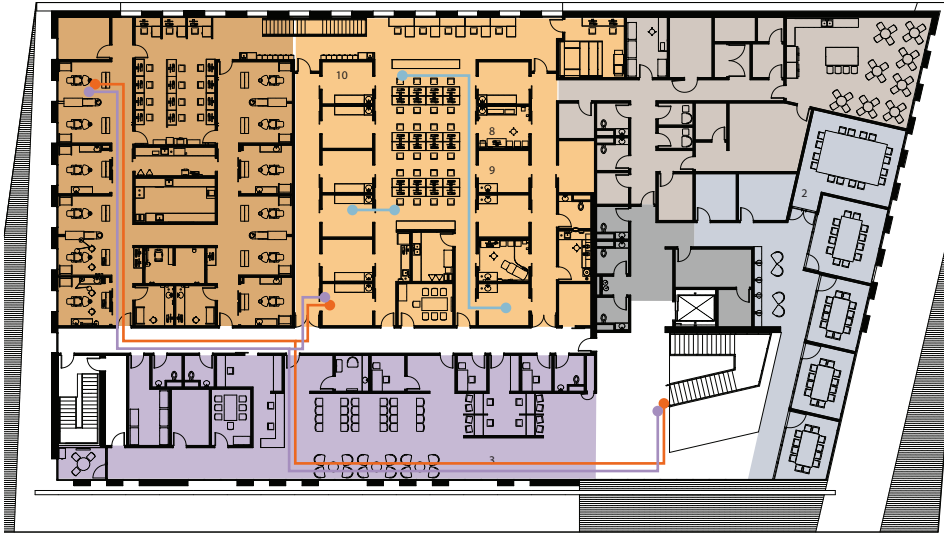
KEY

- Primary Care
- Recovery Services
- Registration
- Community
- Staff Support
- Phlebotomy
- Support

LEVEL 2:



TRAVEL DISTANCE ANALYSIS



KEY SPACES:

- Dental Exam Rooms (136 sf)
- Exam Room (118 sf)
- Staff Work core (560 sf)
- Conference Room (186 - 440 sf)

DEPARTMENTAL GROSS SQUARE FOOT TAKE-OFFS

	Net	Gross	
Dental Care	2815 SF	4050 SF	1.44
Women, infant and child	2741 SF	4989 SF	1.82
Staff Support	2210 SF	2823 SF	1.28
Waiting & Registration	1802 SF	3380 SF	1.88
Community	1518 SF	2260 SF	1.50
Support	383 SF	750 SF	1.96

TRAVEL DISTANCE ANALYSIS

- Patient 112 ft - 234 ft
- Family 112 ft - 234 ft
- Staff 12 ft - 75 ft

Meridian Center for Health

Seattle, Washington

Sustainable integration

INTEGRATING a range of healthcare specialists—dental care, women, infant and children care, mental health wellness and more—helps increase provider availability and decrease treatment fragmentation.

Teaming spaces, “hot desking” (shared workstations) and cross-specialty exam rooms, and a staff lounge (for potlucks and staff events) promote greater interaction and collaboration between different healthcare providers.

The design team carefully considered the placement of **onstage** areas (health provider with patient) and **offstage** areas (health provider without patient) and the circulation between them, to promote greater engagement—as well as privacy regarding sensitive medical information—for caregivers and patients alike.

PROJECT SUMMARY:

Project: Meridian Center for Health
Project location: Seattle, WA
Owner/Client: Neighborcare Health
Architect: NBBJ



CORRIDOR



STAIRS / PATIENT FRIENDLY ENVIRONMENT



EXAM ROOM

AIA/AAH DESIGN AWARD WINNER

Category: A: Built, Less than \$25 million in construction cost

JURY COMMENT

- ▶ The siting of this building is masterful; the landscape invites clients as well as non-clients to enjoy and explore the grounds. The project is uniquely about health, gracefully including spaces for community resources that support a patient population with varying and challenging needs. A sensitive approach to mental health homeless patients led to the design of outdoor patios that can double as consult spaces; the driveway was widened to provide space for farmers markets. The project was designed as an asset and destination for the greater community, and as a good neighbor addressing the future of healthcare.
- ▶ The building itself uses a contemporary language, without being trendy. The scale is humane, and the use of materials, particularly wood, gives it a tactile appeal. Sustainability is evident throughout the program, structure and site. The use of views and natural daylighting is exquisite. The photography and presentation of the project are excellent.
- ▶ The jury’s key words for this project are “sweet” and “beautiful.”



VIEW TO NATURE