

anthropology and architecture in Northwest Yunnan, China

pattern, practice and meaning in
Bai, Naxi, and Tibetan houses



anthropology and architecture in southwest China

John Flower and Pamela Leonard

History and anthropology of rural China

Chinese Studies Program, Sidwell Friends School

Center for Leadership in Global Sustainability Fellows



overview

- Basic patterns of vernacular houses in Yunnan
- Bai houses--social hierarchies and symbolic ornamentation
- Naxi houses-- gendered worldviews and production
- Tibetan houses—landscape and belief
- Modernizing processes and changes in architecture



班門弄斧
 是一種
 檢驗
 自身
 水平的
 好辦法



班門弄斧
 記漫門



diverse and conservative

- Diversity of places =
diversity of materials, designs, beliefs
- Common landscape, production, belief =
conservative design in each place
- Continuum of folk housing=
Confucian civilization; market economy















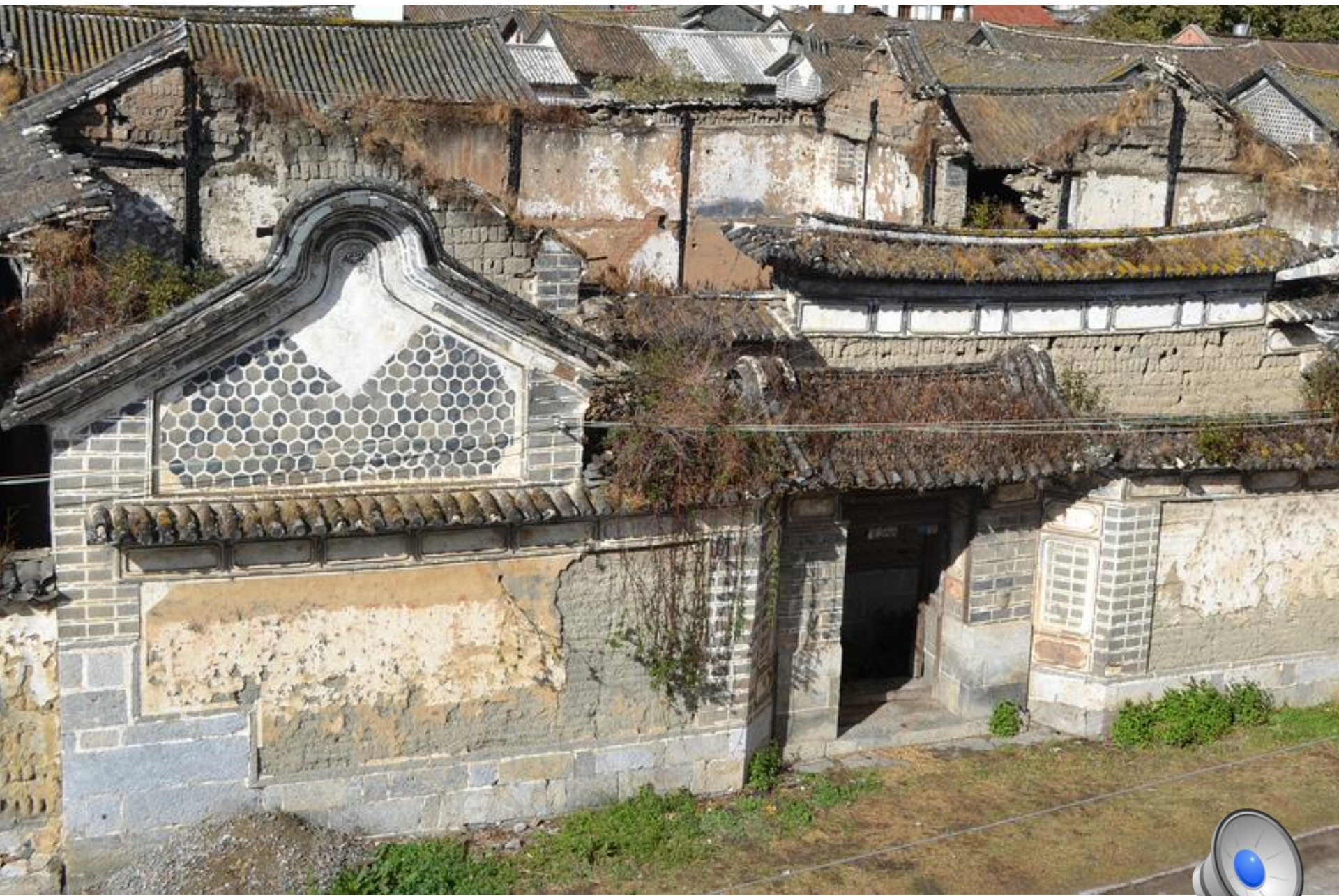




patterns of materials

- stone foundations
- rammed earth walls
- mud brick
- post and beam
- log cabins
- cement and brick or “multi-storeyed house”







新春大吉

滿門平安好運來

合家歡樂迎富貴

















patterns of design

- 院 *yuan* **courtyard**
- 房 *fang* **wing**
- 间 *jian* **room**

- **symmetry and centrality and hierarchy**







patterns of function

- Houses are agricultural technology
 - production and the cycling of nutrients
 - animal husbandry 家
- Houses “generate social relations”
 - orders of authority (family, generation, clan)
 - gender roles and relations





















萬發男鞋 · 99" 火輪盤

Wanfa
萬發





Bai houses--social hierarchies and symbolic ornamentation

- 门楼 *menlou* **social status**
- 主房 *zhufang* **generational hierarchy**
- 堂屋 *tangwu* **religious belief / altar room**
- 照壁 *zhaobi* **screen wall / clan motto**
- 家训 *jiaxun* **family instructions**
- Inscription of Confucian values









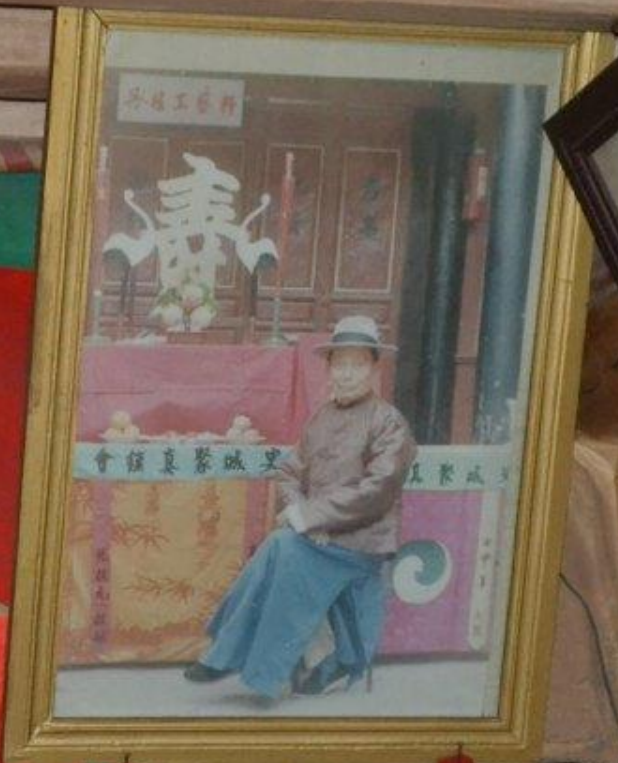




舊物

盤獻雙桃

元先生璧德

















履以行謙以制
禮復以自恒
一德恭則不侮寬
則得衆信則人任
敏則有功傲不可
長欲不可縱志不
若謙居莫若敬
利莫若恕事莫若
節錄



Naxi houses: worldviews and production

- cultural difference and diversity within Naxi
 - Confucian influence in Lijiang
 - Matriarchal remnants (Mosuo)
- Animism: the spirits of nature
- gendered divisions of space















家幸福美滿







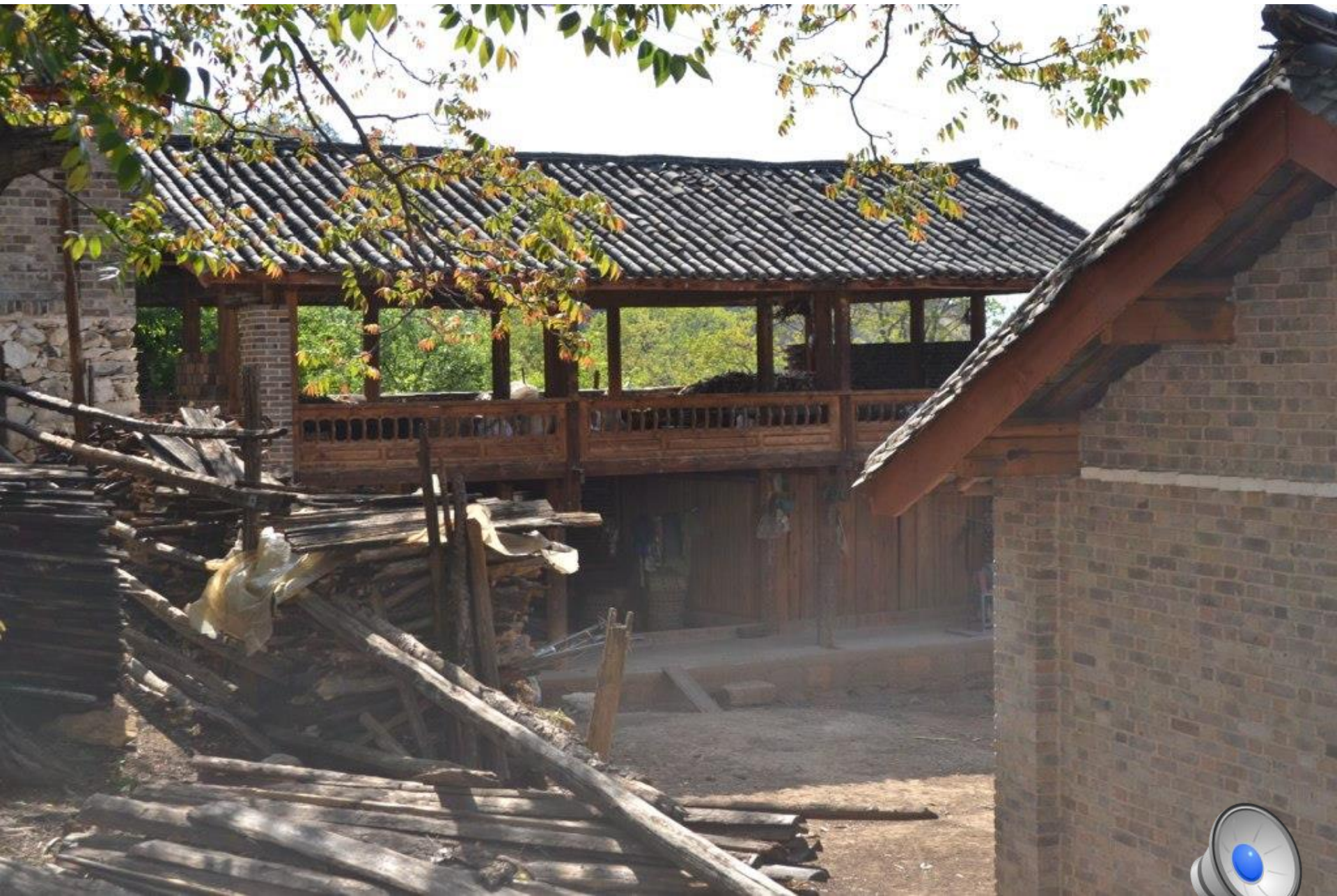


















Tibetan houses: landscape and belief

- Land and resources
- Functional division of space: animal husbandry
- Central sacred places: hearth, shrine, pillar





















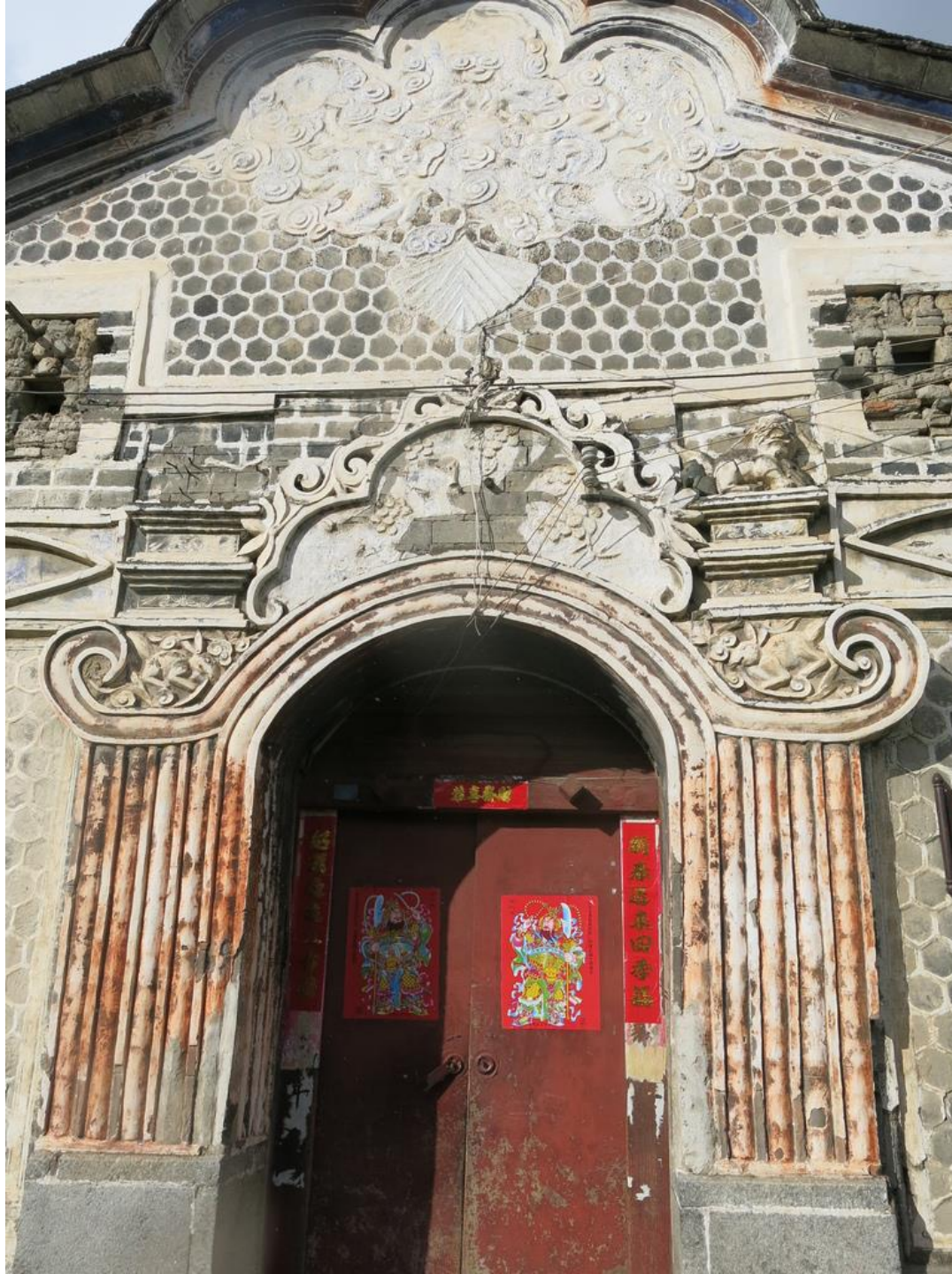




Change and continuity

- Modernization of materials and designs
- Change of house functions and meanings
- Continuities: change within tradition



























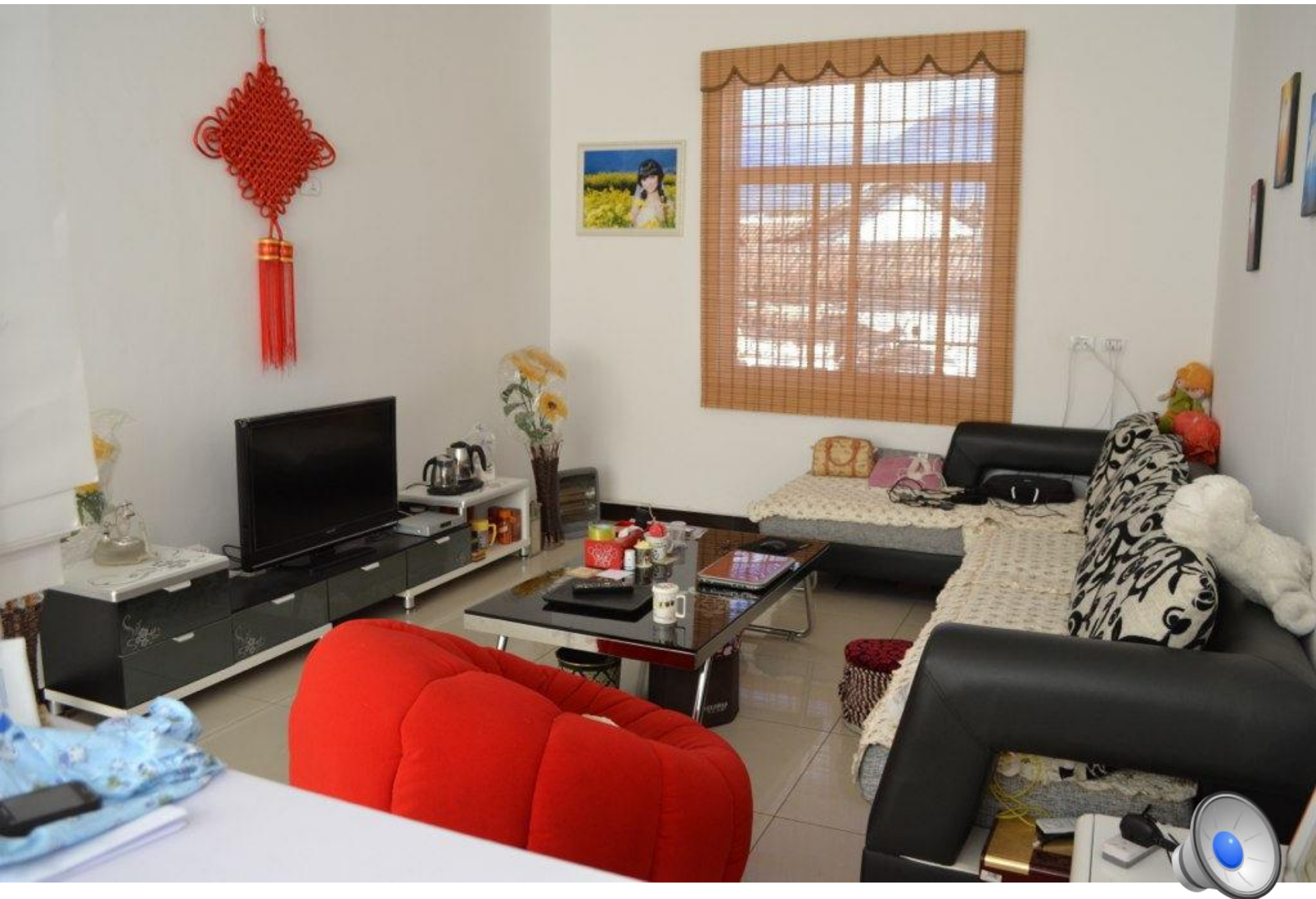
















flowerj@sidwell.edu
pamleonard@icloud.com

