



**AIA AAJ NATIONAL CONFERENCE**

# Architecture for SOCIAL JUSTICE

**SAINT LOUIS, MISSOURI | NOVEMBER 5-7, 2014**



# CONFERENCE PROGRAM



**THE AMERICAN INSTITUTE  
OF ARCHITECTS**  
Academy of Architecture for Justice  
[www.aia.org/aaj](http://www.aia.org/aaj)



CONTENTS

Message from the Conference Chairs	1
Message from the AAJ	2
Plenary and Keynote	3
Schedule	4
Architectural Tours	6
Session Descriptions	8
Speaker Biographies	15
Conference Map	24
Exhibitor Information	25
Sponsors / Partnerships	29
JFR Awards Banquet	30
Saturday Workshop	31
Experience St. Louis	32

ACKNOWLEDGEMENTS



This conference is the result of unsurpassed teamwork. The Academy of Architecture for Justice Advisory Group – Ms. Linda Bernauer, Ms. Catherine Chan, Ms. Liz Minnis, Mr. Lorenzo Lopez, and Ms. Amy Phillips – would like to extend our heartfelt gratitude to the conference planning committee:

Co-Chairs	Rona Rothenberg, FAIA Michael LeBoeuf, FAIA
Track Chairs	Susan Oldroyd, FAIA Brian Meade, AIA David Bostwick, AIA
Tour Chair	Bob Schwartz, FAIA
Emerging Professionals	Amy Phillips, AIA and Gregory Cook, AIA

In addition, we would like to express our special thanks to the incomparable support of:

Ms. Kathleen Simpson, Ms. Lori Feinman and the entire team at the AIA; Natalie Navales, Jill Davis, Mike Chung and the entire team at HOK.

We are truly honored to work with such an amazing group! And thank you all for joining us—we look forward to connecting with all of you!

**The Academy of Architecture for Justice Advisory Group**

MESSAGE FROM THIS YEAR’S CONFERENCE CHAIRS



We will come together in St. Louis in November to discuss and debate how justice architecture is changing in response to the needs of society. Across the nation, courts, law enforcement, juvenile and adult criminal justice systems, and mental health and social service professionals and associated agencies, at all levels, are developing unified approaches to justice delivery. In these models, police, courts, and their sister corrections systems are adapting their practices, to improve outcomes, reduce recidivism and become more effective by employing restorative justice models. This is a trend which promises to achieve a wider individual and social benefit. The justice facilities we are designing and building can and do reflect these changes.

In the upcoming AAJ 2014 Conference: “Architecture for Social Justice,” to be held from Wednesday, November 5, through Friday, November 7, we will share these justice models, and associated court, police, detention, and juvenile campus and facility planning, design and construction projects, completed, and in planning and design. The diverse and intensive three day conference incorporates varied topics and tracks focused largely on restorative justice models and their positive outcomes in court, mental health care, social services, law enforcement and corrections practices and the buildings designed to reflect these practices. Within this theme, the lectures and panels will feature building projects and associated justice delivery programs in local justice facilities at the neighborhood level, federal and state levels, in social service and health care systems, and in police and detention facilities. The topics within these sessions focus on a range of related topics relevant to the social justice theme.

At this unique and special conference, our distinguished speakers will share a wide range of relevant topics. These range from a presentation demonstrating correctional mental health care delivery in a secure corrections and detention environment to design for special inmate populations, or from therapeutic justice demonstrated in panels describing the design and construction of a mental health and family justice center courthouse in San Jose California, and a community re-entry program from the St. Louis County jail. Justice design experts will speak to us about their demonstrated successes in sustainable justice design in case studies including engineering the net zero prison and in a case study in trauma-informed sustainable design in a youth and family services center.

Through this remarkable range of presentations, we will reflect on how utilizing specialized courts, police models, mental health counseling and associated corrections practices can support resolution, and proper adjudication, in issues of addiction, mental illness and traumatic experiences, and in civil and criminal matters involving families and children. We will participate in presentations and panels on these topics, and engage to discuss how law enforcement and courts are developing assessment tools to identify underlying issues early as in updated models of justice delivery and the buildings that serve those practices.

As architects in private practice and within institutions, we are charged to develop facilities responsive to new programmatic attitudes and directions and which are fit the time and place in which they are designed and constructed, with an eye toward flexible uses over time. This has always shaped our attitudes about timeless architecture and our contributions to development and delivery of justice building programs which work for present and future users. In this conference, we see, visit, discuss and explore how current justice facilities are meeting the demands for social change, how we have responded and how this will affect the next generation of justice architects and their clients.

We look forward to your participation a very exciting pre-Thanksgiving conference, in a lively and meaningful interchange in American’s heartland. Please join us.

Yours truly,

*Rona G. Rothenberg* *Michael LeBoeuf*

Michael LeBoeuf, FAIA, and Rona G. Rothenberg, FAIA  
Co-Chairs, 2014 AAJ Conference



# MESSAGE FROM THE AAJ ADVISORY GROUP CHAIR



Welcome to St. Louis, the Gateway to the West, a beautiful and vibrant city celebrating its 250th anniversary. Our conference Co-chairs, Rona Rothenberg FAIA and Michael LeBoeuf FAIA; Track chairs David Bostwick, Brian Meade, and Susan Oldroyd, FAIA; and local liaisons; Bob Schwartz, FAIA, Greg Cook, and Amy Phillips, have assembled a variety of sessions, tours and events that bring to life our 2014 Academy of Architecture for Justice Conference theme of Social Justice. We are continuing the overall theme of change, this year specifically related to changes in the design of facilities that improve the outcomes of those involved in the Justice System.

Not a week goes by that we don't see, hear or read about the state of the Justice System in the United States. Most of what is reported is overwhelmingly negative, but there are pleas for change ranging from the US Attorney General to local Police Departments, and most of all, from the public. This conference examines some of the positive changes happening in the system. Our keynote and luncheon speakers, Judge Jimmie Edwards and Director Gary Mohr are leading change in their respective localities. Judge Edwards seeks to end the school to prison pipeline through his school for troubled youth in St. Louis. Gary Mohr, Director of the Ohio Department of Corrections, has testified before the U.S. Congress to advocate for the elimination of solitary confinement in the prison systems. Sessions prepared by our colleagues showcase positive change led by design teams and receptive clients.

As architects we have a unique perspective on change and problem solving. Every facility we design results in change for the building occupants. We are leading change in a Justice System on the threshold of transformation. This conference will give the participant a unique view of progress made in the areas of research, therapeutic design, restorative justice, and sustainability – both of the facilities and the system. We have included guests from YouthBuild, a non-profit organization that the AAJ would like to support, students from nearby Washington University, and have again offered scholarships to Emerging Professionals. Our Closing Plenary will focus on Justice in the Next Epoch with guest speaker Peter Salk.

Please join us as we share not only our successes, but also our hopes to continue the process of improving the lives of all those who interact with the Justice System from the victims to the perpetrators; from the judges to the officers on the streets.

Sincerely,

Linda Bernauer, AIA, LEED AP BD+C  
2014 National AAJ Advisory Group Chair

# PLENARY & KEYNOTE

**OPENING PLENARY**  
**THE INTERSECTION BETWEEN**  
**ARCHITECTS AND AT RISK YOUTH**  
*WEDNESDAY, NOVEMBER 5 | 4:00-5:30 PM*



**HON. JIMMIE M. EDWARDS**  
Judge, 22nd Circuit Court of Missouri

Judge Edwards will welcome attendees to the City of St. Louis and present the Innovative Concept Academy, a one-of-a-kind school he developed to give at risk youth opportunities to learn outside the traditional educational and justice system. The discussion will include understanding implicit and cultural bias and issues of social justice. Finally, Judge Edwards will address questions from the audience on this and related issues.

**KEYNOTE LUNCH**  
**BUILDING A SYSTEM TO REDUCE RECIDIVISM**  
*THURSDAY, NOVEMBER 6 | 11:00 AM-12:30 PM*



**GARY MOHR**  
Director, Ohio Department of Rehabilitation and Correction

Reducing "restrictive housing" offenders is a national movement with an emphasis on increasing opportunities for treatment and programming. Understanding the development and design of the correctional setting can assist this movement. Correctional facility design enhancements could increase public safety and programming opportunities. Understanding the need for space required for programming and the positive influence of pro-social activities is critical in reducing restrictive housing population.

**BREAKFAST PRESENTATION**  
**YOUTHBUILD, MAKING A**  
**DIFFERENCE IN LOCAL COMMUNITIES**  
*FRIDAY, NOVEMBER 7 | 7:00-8:00 AM*



**JULIE TIBBS**  
Executive Director of St. Louis YouthBuild

YouthBuild's sole focus is to create opportunities for this population of young people, our so-called "Opportunity Youth." These are young people who are seeking an opportunity for themselves, and who represent a great opportunity for this country if we are able to re-engage them with a meaningful education and help them obtain marketable skills that will allow them to obtain jobs with sustainable wages. In 2010, based on data submitted to YouthBuild USA from 131 affiliates, 78 percent of enrollees completed the program; 63 percent of these obtained their GED or diploma; 60 percent went on to postsecondary education or jobs averaging \$9.20 an hour; 25 percent enrolled in postsecondary education. Recidivism rates for court-involved YouthBuild students are 40 percentage points lower than the national average.

Introduction by Amy Phillips, AIA

**CLOSING PLENARY**  
**JUSTICE IN THE NEXT EPOCH**  
*FRIDAY, NOVEMBER 7 | 12:25-1:55 PM*



**JONATHAN SALK**  
Co-Author, World Population and Human Values: A New Reality

We are in a time of disruptive change where today's realities include global warming, water and food shortages and worsening economic disparities. Shifting from a time of unrestricted growth to one of limitations demanding new behaviors and solutions. Dr. Salk will provide a framework for new meaning and hope in the new epoch, one that makes sense of the disruption we are experiencing. This framework provides a launching pad for new thinking about the justice system in the context of society, the community, the facility and the individual.

Introduction by Beverly Prior, FAIA





SCHEDULE

TRACK 1	TRACK 2	TRACK 3
---------	---------	---------

WEDNESDAY, NOVEMBER 5

11:00 AM - 5:00 PM	Registration Open	
12:30 PM - 1:30 PM	AAJ Leadership + Scholar - Meet and Greet / Lunch	
1:30 PM - 2:30 PM	AAJ Leadership Meeting	WT01: 1.5 HSW LUs Tour: The Old Courthouse and Old Post Office (Meet at the Old Courthouse)
2:30 PM - 3:30 PM	AAJ Membership Meeting	
4:00 PM - 5:30 PM	PL01: 1.5 LUs Opening Plenary with Hon. Jimmie M. Edwards, Circuit Judge State of Missouri	
5:30 PM - 7:30 PM	Welcome Reception with Exhibitors	

THURSDAY, NOVEMBER 6

7:00 AM - 8:00 AM	Continental Breakfast with Exhibitors		
8:00 AM - 9:15 AM	TA01: 1.25 HSW LUs Facility Design for Mental Health in the Corrections & Detention Environment	TB01: 1.25 LUs Designing The Democratic Courtroom	TC01: 1.25 LUs Progressive and Public: Doing Communities Justice through Design
	[DC] [State] [Mental] [Panel]	[CT] [Fed] [Theory] [Round]	[LE] [Local] [Case]
9:25 AM - 10:40 AM	TA02: 1.25 HSW LUs Mental Health Delivery within a Secure Environment - A Post Occupancy Evaluation	TB02: 1.25 HSW LUs Therapeutic Justice: A New Family Justice Center Courthouse	TC02: 1.25 HSW LUs Correctional Lighting Is Bad For Your Health
	[DC] [Mental] [POE] [Case]	[CT] [State] [Family] [Mental] [Case]	[DC] [Research] [Panel]
11:00 AM - 12:30 PM	PL02: 1.5 HSW LUs Building A System to Reduce Recidivism		
	Lunch and Plenary with Gary Mohr, Director of the Ohio Department of Rehabilitation and Corrections		
12:30 PM - 1:00 PM	Roundtables		
1:10 PM - 2:25 PM	TA03: 1.25 HSW LUs The Importance of Design for Special Inmate Populations	TB03: 1.25 LUs Justice for ALL: Embracing Diversity in Civic Design	TC03: 1.25 HSW LUs A Case Study in Trauma-Informed Sustainable Design - Johnson County Youth & Family Services
	[DC] [Mental]	[CT] [State] [Language] [Case]	[DC] [Local] [Juvenile] [Case]
2:25 PM - 3:10 PM	Afternoon Break with Exhibitors		
3:10 PM - 4:25 PM	TA04: 1.5 HSW LUs Towards guidelines for segregated housing	TB04: 1.5 HSW LUs Safe Public Spaces: Encouraging Positive Social Behaviors Through Design	TC04: 1.5 LUs True Public Safety - Changing Identities, Changing Facilities
	[DC] [Policy] [Panel] [Beginner]	[Round] [Case] [Beginner] [ADA]	[LE] [Local] [Panel]
4:25 PM - 4:55 PM	Roundtable	Roundtable	Roundtable
4:55 PM - 5:55 PM	Reception with Exhibitors		
7:00 PM - 10:00 PM	PL03: 1 LU The JFR Awards: Lessons from the State-of-the-Art with short selected case studies moderated by Beverly Prior, FAIA		
	JFR Banquet (ticketed event)		

TRACK 1	TRACK 2	TRACK 3
---------	---------	---------

FRIDAY, NOVEMBER 7

7:00 AM - 8:00 AM	PL04: 1 LU Continental Breakfast with YouthBuild, Making a Difference in Local Communities		
8:00 AM - 9:15 AM	FA01: 1.25 LUs Impacts of Changes in the Federal Criminal Justice System	FB01: 1.25 HSW LUs Positive Trends: How New Design Approaches Are Improving Outcomes	FC01: 1.25 LUs One Mission - Justice with Dignity and Speed - A Strategic Plan in implementation mode
	[DC] [Fed] [Policy] [Panel] [Beginner]	[DC] [Panel]	[State] [Policy] [Panel] [Advanced]
9:25 AM - 10:40 AM	FA02: 1.25 HSW LUs Engineering the net zero prison	FB02: 1.25 LUs Design to Restorative Principles – Design of the Clayton County Juvenile Courthouse	FC02: 1.25 HSW LUs Inmates as Temporary Residents: Richmond City Justice Center a Case Study
	[DC] [Sustainability] [Case]	[CT] [Juvenile] [Local] [Mental] [Case]	[DC] [Case]
11:00 AM - 12:15 PM	FA03: 1.25 HSW LUs Implementing California AB900 Completed Projects	FB03: 1.25 HSW LUs Stakeholder Engagement in the Creation of Humane and Restorative Correctional Spaces	FC03: 1.25 HSW LUs Community Reentry from the St. Louis County Jail
	[DC] [Fed] [State] [Theory] [Mental] [Case]	[DC] [Women] [State] [Local] [Theory] [Panel]	[DC] [Local] [Tour]
12:25 PM - 1:55 PM	PL05: 1.5 LUs Justice in the Next Epoch		
	Lunch and Closing Plenary with Jonathan Salk, moderated by Beverly Prior, FAIA		
1:55 PM - 2:25 PM	Roundtables -- Pay It Forward		
2:25 PM - 2:40 PM	Meet at Tour Departure and Load Buses		
2:40 PM - 5:00 PM	Tours: Select One		
	FT01 Tour: Buzz Westfall Justice Center 1.5 HSW LUs FT02 Tour: Thomas F. Eagleton United States Courthouse 1.5 HSW LUs FT03 Tour: Illinois State Police Metro-East Forensic Laboratory 1.5 LUs FT04 Tour: City of St. Louis Police Headquarters 1.5 LUs		

SATURDAY, NOVEMBER 8

8:00 AM - 12:00 PM	SW01: 3 HSW LUs Sustainable Justice Workshop
--------------------	---

KEY for SESSION KEYWORDS

Facility Type:

[CT] Courts  
[DC] Detention and Corrections  
[LE] Law Enforcement

Format:

[Case] Case Study  
[Panel] Panel Discussion  
[Round] Roundtable Discussion

Approach to Subject:

[POE] Post Occupancy Evaluation  
[Research]  
[Policy]  
[Theory]  
[Tour] Related to a Friday Tour

Scope:

[Local] Local  
[State] State  
[Fed] Federal

Level:

[Beginner]  
[Advanced]  
\*Otherwise, assume intermediate

Special Focus on:

[Juvenile]  
[Women]  
[Family]  
[Language] Support non-English speakers  
[Mental] Mental Health  
[Sustainability]





**OLD COURTHOUSE**  
**WEDNESDAY, NOVEMBER 5 FROM 1:30 - 2:30 PM**

The Old Courthouse is one of St. Louis’ most prominent architectural landmarks. Our guides will explain the historical significance within the context of 19th Century St. Louis and the nation’s westward expansion including the Dred Scott and Virginia Minor cases which had national significance.



**OLD POST OFFICE**  
**WEDNESDAY, NOVEMBER 5 FROM 2:30 - 3:30 PM**

This Old Post Office building, a 242,000 square foot National Historic Monument, was redeveloped as a mixed-use building to ensure its survival and to protect its architectural significance. The building, which once sat vacant, now houses the Missouri Court of Appeals, the Secretary of State and Attorney General’s Office for the State of Missouri, Webster University, the St. Louis Business Journal and the St. Louis Public Library. We will explore the completed renovation with rehabilitation of the architectural historical integrity obscured by modifications over the last 120 years, upgraded the engineered building systems to 21st century standards, and security balanced with openness.



**THOMAS F. EAGLETON UNITED STATES COURTHOUSE**  
**FRIDAY, NOVEMBER 7 FROM 2:40 - 5:00 PM**

A major landmark for the City of St. Louis, the Thomas F. Eagleton United States Courthouse is the home of the Eighth Circuit Court of Appeals and the District Court of Eastern Missouri, one of the largest single courthouses in the world. The architect developed a unique split floor concept for this courthouse to resolve the complex needs of the courts, the imperative of efficient circulation in a safe and secure environment, and the challenge of a cost-effective response to the prerequisite for varying floor heights of major elements. The tour will access spaces designed for each user group: the court staff, the jury and the public. Court clerks and administrators will lead the tour explaining how they use the spaces day-to-day.



**ILLINOIS STATE POLICE METRO-EAST FORENSIC LAB**  
**FRIDAY, NOVEMBER 7 FROM 2:40 - 5:00 PM**

The Illinois State Police has the second largest forensic unit in the nation, second only to the Federal Bureau of Investigation. The Metro-East facility had been housed for 20 years in what was originally the Pleasant View Tuberculosis Sanatorium in Fairview Heights, Illinois. In 2006, the State engaged Harley Ellis Devereaux of Chicago and Crime Lab Design for the programming and planning of a new facility for the state. Eight years later in August of 2014, the ribbon cutting for this new, modern forensic laboratory occurred with all of the pomp and circumstance and tales from the politicians attached to the project. This tour will include several key functional units: Evidence Receiving, Handling, Cataloging and Storage; Trace; Forensic Biology/ DNA; Drug Chemistry; Instrument room; Crime Scene services including Vehicle Exam bays.



**BUZZ WESTFALL JUSTICE CENTER**  
**FRIDAY, NOVEMBER 7 FROM 2:40 - 5:00 PM**

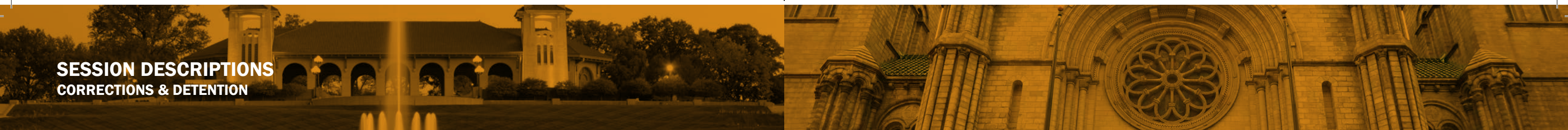
The Justice Center consolidates all St. Louis County’s detention needs into one facility. Located on a tight urban site it rises eight levels above grade with one level below. The Justice Center is directly connected to the existing courthouse by a sky bridge to reduce the transfer cost of incustody defendants. The Justice Center provides 1,232 beds, an intake processing center, medical clinic and infirmary, a cook-chill kitchen, laundry, maintenance shops and warehouse, as well as two courtrooms and the offices of the prosecuting attorney and public defender. The tour will include visitation to all of these spaces with the facility management staff outlining the health and safety implications of the design features to the user groups.



**CITY OF ST. LOUIS POLICE HEADQUARTERS**  
**FRIDAY, NOVEMBER 7 FROM 2:40 - 5:00 PM**

The new headquarters of the City of St. Louis Metropolitan Police Department opened in July 2014 and is an adaptive re-use of a building originally constructed to house the offices of Sherwood Medical. Instead of spending \$70 million to modernize their existing headquarters the Police purchased the vacant building for \$2.7 million and invested \$10.1 million for its renovation. It was funded using a combination of bond funds, criminal asset forfeitures and donations from the St. Louis Police Foundation and private contributions. Located 1.2 miles from the conference hotel, participants will tour the 9-story, 143,000 SF facility including offices, latent lab, training and exercise rooms, emergency management unit operations center and police memorial. The tour will be led by the department’s facility manager, special projects officer and lead architect.





SESSION DESCRIPTIONS  
CORRECTIONS & DETENTION

FACILITY DESIGN FOR MENTAL HEALTH IN THE  
CORRECTIONS & DETENTION ENVIRONMENT  
THURSDAY, NOVEMBER 6 | 8-9:15 AM

A panel discussion covering the need for the design of more appropriate facilities for the mentally ill in the corrections/detention environment. The mentally ill component of the prison population has been growing as a result of the decline in state supported mental health facilities. With no health care or other financial resources, a mentally ill person can end up in jail and perhaps later in prison if they commit a crime. Conventional prison design is quite different from the design of facilities for people suffering from mental illness. Washington State DOC and others are working to help protect the rights of the mentally ill and to provide higher levels of care. Some of this work has begun to modify traditional prison and jail design. The panel will discuss trends for the planning and design of more appropriate prison and jail accommodations for the mentally ill.

SPEAKERS: Larry D. Hurlbert, AIA, DBIA  
Karie Rainer, Ph.D.  
Scott R. Frakes

MENTAL HEALTH DELIVERY WITHIN A SECURE  
ENVIRONMENT: A POST OCCUPANCY EVALUATION  
THURSDAY, NOVEMBER 6 | 9:25-10:40 AM

Penitentiaries are becoming repositories for the mentally ill: the prevalence of mental illness in prison populations far exceeds that of general society. This presentation examines mental health delivery within Canadian prisons and undertakes a post-occupancy evaluation of an innovative maximum security facility that focuses on mental health care. The St. Lawrence Valley Correctional and Treatment Centre, located in Brockville Ontario, comprises of a 44-bed secure treatment unit and a 100-bed forensic psychiatry unit. The Centre is administered by the Royal Ottawa Hospital, a renowned mental healthcare institution, and monitored by the ministry for provincial corrections. This unique collaboration has impressive results with respect to both health and recidivism. The presentation will conclude with a description of architectural features that support clinical programs and services.

SPEAKERS: Robert Boraks  
Ivan Zinger, J.D., Ph.D.  
James E. Allin

THE IMPORTANCE OF DESIGN FOR  
SPECIAL INMATE POPULATIONS  
THURSDAY, NOVEMBER 6 | 1:10-2:25 PM

Responding to the individual needs of the prisoners and inmates in our nation’s institutions is paramount to social justice in corrections. Prisons and jails have become today’s de facto residential mental health institutions and mental health inmates can typically account to up to 30% of the average daily population of an institution. This seminar will provide evidence-based key design considerations that planners and designers should be aware of when developing correctional environments for mental health inmates as well as medical and segregated inmates. Particular focus will be on key areas within the facility including: housing, special housing units, intake, infirmary, clinic, detox cells, suicide cells, step-down units, observation units, and programs.

SPEAKERS: Dr. Elizabeth Falcon-Bishop  
Gary Mohr

TOWARDS GUIDELINES FOR SEGREGATED HOUSING  
THURSDAY, NOVEMBER 6 | 3:10-4:25 PM

Segregated housing in corrections and detention-- often referred to as solitary confinement-- is headed for big changes, with forces for change including everyone from correctional administrators to mental health professionals to human rights advocates. AAI’s New York branch in partnership with Architects / Designers / Planners for Social Responsibility have proposed writing Guidelines for Best Practices in the area that meet security concerns while preserving human dignity. In this interactive workshop, we will learn about the human rights issues and personal experiences that arise in the highest-security environments, and brainstorm how the guidelines might look and what process and partners might best get us there.

SPEAKERS: Raphael Sperry  
Brian Nelson  
Gary Mohr  
Jeff Goodale  
Mary Ann McGivern  
William M. Singer, AIA, LEED AP BD+C, NCARB

IMPACTS OF CHANGES IN THE FEDERAL  
CRIMINAL JUSTICE SYSTEM  
FRIDAY, NOVEMBER 7 | 8-9:15 AM

Social Justice requires change, and architecture is an important infrastructure for our changing system. The Bureau of Prisons is 40 percent overcrowded. The U.S. Sentencing Commission proposed a lower guideline range for drug offenses. Proposed legislation could result in changes in mandatory minimum sentencing statutes and restructuring of the federal criminal justice system. Attorney General Eric Holder recently announced the Smart on Crime initiative to focus prosecution on the most serious crimes and Clemency initiative to expand clemency for non-violent, low-level offenders. BOP policies now allow early release for low risk inmates directly to home confinement with a focus on reentry and changes to the Residential Reentry Centers. Reentry Courts have also expanded as part of an evidence-based, systems approach to reentry and supervision.

SPEAKERS: Scott A. Anders  
David D. Noce  
Hon. Noelle C. Collins  
Sam C. Bertolet

ENGINEERING THE NET ZERO PRISON  
FRIDAY, NOVEMBER 7 | 9:25-10:40 AM

See solutions developed to optimize loads through detailing and engineering systems to optimize loads toward net zero. DLR Group redeveloped a prototypical design used in OR and TN. Modern technologies complement envelope design to create the most efficient buildings while maintaining function and security. These systems include but are not limited to combination mechanical systems based on the occupancy and conditions of each space, LED lighting, and geothermal options.

A CDCR case study of the Mental Health Crisis Facility at the California Men’s Colony in San Luis Obispo, CA will explore methods used to achieve LEED Gold under their highly restrictive requirements. Located by an environmentally sensitive creek area, it included storm water retention, green parking swales, vacuum plumbing, etc.

SPEAKERS: Erica Loynd, AIA  
Dan Munn  
Eric Fadness, AIA  
Lorenzo Lopez, AIA LEED AP

IMPLEMENTING CALIFORNIA AB900  
COMPLETED PROJECTS  
FRIDAY, NOVEMBER 7 | 11 AM-12:15 PM

A historic and comprehensive California corrections overhaul bill, Assembly Bill 900, was signed into law on May 3, 2007. This broad package of prison construction and rehabilitation initiatives was created to address serious social justice issues: prison overcrowding, prison health care, rehabilitation programs, and prisoner re-entry. This presentation will present case studies for some of the first completed AB900 projects: California Health Care Facility (Stockton), Health Care Facility Improvement Program, and AB 900 funded county projects (1,392 bed expansion of San Bernardino’s High Desert Detention Center and the 160 bed adult detention facility in Calaveras County) Architectural, construction management, and sheriff’s staff on the teams will discuss the design, construction and financing process for these projects.

SPEAKERS: Larry Hartman, AIA, LEED AP  
April Lenkey  
Captain Jon E. Marhoefer  
Douglass Evans  
Jeff Purtell  
Michael S. Justice, AIA, LEED AP  
Paul Nagashima, AIA, LEED AP  
Tony Murphy, AIA, NCARB



DAVID E. BOSTWICK, AIA, NCARB, LEED AP  
CORRECTIONS & DETENTION TRACK CHAIR  
Senior Justice Planner / Senior Design Architect  
HDR, Inc.

SESSION DESCRIPTIONS  
COURTS

DESIGNING THE DEMOCRATIC COURTROOM  
THURSDAY, NOVEMBER 6 | 8-9:15 AM

Courthouses are places of work, where function, security, and cost must be managed. They also represent justice and the Third Branch of government. Their form should encourage citizens’ participation in a democratic society. This debate between a professor of architecture and a federal judge examines whether there is a place for balconies in contemporary courtrooms. Does a balcony save money, increase security, and actually foster a new set of relationships among the actors in courtrooms, or are they appendages whose time has passed? This lively discussion reviews the “standard” space and work relationships used in U. S. Courthouses, historic models, and other countries’ courthouse designs that incorporate balconies. Participants will be challenged to analyze whether balconies symbolize exclusion, or function for the democratic inclusion of citizens in the justice process.

SPEAKERS: Celeste F. Bremer  
Dr. Athanassios Economou

THERAPEUTIC JUSTICE: A NEW FAMILY  
JUSTICE CENTER COURTHOUSE  
THURSDAY, NOVEMBER 6 | 9:25-10:40 AM

From overcrowding to unsafe conditions resulting from old construction, the demands for change to our judicial system’s built environment are being heard loud and clear. In designing a new family courthouse in San Jose, California the team looked beyond tradition and trends. We looked at a new justice model – one that is family sensitive, can decrease stress, and improve morale – and still stand as a dignified and enduring symbol for justice. Balancing the needs of all who walk through its doors, the courthouse was designed to foster collaboration among staff and serve as a therapeutic environment for patrons, many of whom are children in highly stressful situations. In addition, the building’s sensitive massing, connection to surrounding civic buildings, and sustainable features help to make it a good neighbor for the community.

SPEAKERS: Kimberly Kilgour, AIA, LEED AP BD+C  
Braulio Baptista, Associate AIA  
Rona Rothenberg, FAIA, LEED Green Associate

JUSTICE FOR ALL: EMBRACING  
DIVERSITY IN CIVIC DESIGN  
THURSDAY, NOVEMBER 6 | 1:10-2:25 PM

Planning a courthouse in an underserved and growing county allowed the design team to address local social demographics and the economic challenges of a small, rural town. Many courthouse visitors would not speak English as their primary language, nor would they be familiar with the U.S. justice system. The presentation will examine how issues of social justice, connecting to the local community, and changes in adjudicating the law are addressed in the building’s physical siting and architecture. Topics include site selection and how it serves community needs; how the building’s design reflects openness, engagement and transparency of the court process; how security issues are proactively addressed without compromising aesthetics; how design strategies address desire for light-filled, non-hierarchical courtrooms; and the strategies to create a sustainable, durable and flexible facility.

SPEAKERS: James W. Simeo Jr.  
Brent Martin  
Glade F. Roper  
Jay Farbstein, PhD, FAIA

SAFE PUBLIC SPACES: ENCOURAGING POSITIVE  
SOCIAL BEHAVIORS THROUGH DESIGN  
THURSDAY, NOVEMBER 6 | 3:10-4:25 PM

Justice facility visitors may perceive themselves as vulnerable because of age, disability or situation, and are at a social disadvantage in interactions with the justice environment. Poorly organized or dangerous public spaces do not help this condition. Environments can be designed to confront the perception of threat while efficiently moving pedestrians to their destination. Safe and healthy public spaces do not need barricades and bollards.

- Examples will show that “both crime and the fear of crime can be significantly reduced by implementing appropriate environmental design strategies” (New Zealand National Guidelines for Crime Prevention).
- Internationally accepted principles of safe space design including CPTED (Crime Prevention through Environmental Design) will be presented for discussion.
- Pertinent recent data will help attendees make evidence-based design decisions.

SPEAKERS: Susan Oldroyd, FAIA, LEED AP

POSITIVE TRENDS: HOW NEW DESIGN  
APPROACHES ARE IMPROVING OUTCOMES  
FRIDAY, NOVEMBER 7 | 8-9:15 AM

All criminal justice institutions share the fundamental objectives of safety, health, and efficiency, which are bound together by architectural design and operational planning. As institutions move towards restorative models that focus on rehabilitation and alternative programs to improve outcomes, the use of evidence-based practices in design and planning provides a bridge between the cultures of security and treatment. New approaches to the design of these facilities reflect a better understanding of the importance of design that is supportive to therapeutic health services and programming. Whether the goal is reducing recidivism or simply releasing someone in no worse condition than they entered, a greater awareness of the psychological impact of the physical conditions of confinement is essential. Successful project examples and design concepts will be used to support the discussion.

SPEAKERS: Gregory Cook, AIA, LEED AP BD+C, CCHP  
Alan Bright, FAIA, LEED AP BD+C  
Erin Costino Persky  
Jeff Goodale

DESIGN TO RESTORATIVE PRINCIPLES: DESIGN OF THE  
CLAYTON COUNTY JUVENILE COURTHOUSE  
FRIDAY, NOVEMBER 7 | 9:25-10:40 AM

Based upon the restorative principles advanced by Judge Teske the design was guided by these goals:

- Create an open, less formidable, image than the traditional archetype of courthouse- of “Being Brought to the Law”
- De-institutionalize the providing of services
- Foster collaboration among service providers and community
- Organize the building toward healing processes where court is the last resort.
- Create space that is easily understood, easily traversed and fosters a calm and productive work environment
- Organize the building to minimize stress of users and staff while maximizing security.

The court is now perceived as a place to go to for assistance as opposed to a place to avoid. It is a courthouse designed to serve as a hospital for troubled youth, abused and neglected children, and families in need of services. Arrests are down over 60% due to enhanced collaboration.

SPEAKERS: J. Richard Davidson  
Steven C. Teske

STAKEHOLDER ENGAGEMENT IN THE CREATION OF  
HUMANE AND RESTORATIVE CORRECTIONAL SPACES  
FRIDAY, NOVEMBER 7 | 11AM-12:15 PM

This panel presents 2 collaborative projects whose processes and design solutions challenge the status quo of prison environments though the development of spaces that are humane and restorative. Led by a panel of designers, correctional staff and restorative justice practitioners, attendees will learn about the first design tools for stakeholder engagement in high security settings created by Designing Justice Designing Spaces and learnings from a case study project with the Iowa Correctional Institution for Women and the Department of Landscape Architecture at Iowa State University. Correctional institutions are often stressful and dehumanizing environments that may increase the risk of violence and mental illness. These projects are changing the by improving the emotional welfare of its occupants, supporting beneficial programs, reducing recidivism and promoting successful reentry.

SPEAKERS: Deanna Van Buren  
Barb Toews  
Curtiss Pulitzer  
Garret Munch  
Julie Stevens  
Patti Wachtendorf



SUSAN OLDROYD, FAIA, LEED  
COURTS TRACK CHAIR  
Courts Consulting / Secure Facility Design  
Susan Oldroyd Architect





SESSION DESCRIPTIONS  
LAW ENFORCEMENT

PROGRESSIVE AND PUBLIC: DOING  
COMMUNITIES JUSTICE THROUGH DESIGN  
THURSDAY, NOVEMBER 6 | 8-9:15 AM

Justice and injustice issues inspire social debates. Social justice is built around principles that challenge justice and value diversity. It relates to issues of dignity; political, economic and social equality. “Spatial justice, most simply, is the intersection of space and social justice” -Lefebvre, Henri. Le Droit à la ville. 1968. The design team at Stantec Architecture took these principles to heart when designing the Calgary Police Service’s (CPS) Westwinds Campus. This case study demonstrates the alignment of a progressive law enforcement campus with the Service’s goals for community policing, optimizing operational efficiencies and fostering a strong workplace community. It focuses on how the holistic design of the campus achieves these elements of social justice. The campus provides for spatial justice by its impact on education,wellness, empowerment and cultural identity.

SPEAKERS: Enzo Vicenzino  
Roger Chaffin

CORRECTIONAL LIGHTING IS BAD FOR YOUR HEALTH  
THURSDAY, NOVEMBER 6 | 9:25-10:40 AM

This session presents a polemic on the critical situation of lighting in correctional facilities – and what should be done about it. Most correctional facilities have lighting that is bad for the health of inmates and correctional officers who work night shifts. The source of the problems include lighting of the incorrect intensity, spectrum, and time pattern (e.g., night lights in cells). We will review evidence from research in healthcare facilities and neuroscience studies about lighting and circadian rhythms, the psychological and health outcomes, and how devastating it can be when these rhythms are disrupted. The potential of new kinds of lighting (e.g., programmable LEDs) to remedy the situation will be presented and a discussion will follow of what correctional architects can do about it – leading to a potential program of research, product development, and design.

SPEAKERS: Jay Farbstein, PhD, FAIA  
Eve Edelstein, PhD, F-AAA  
Melissa M. Farling, FAIA, LEED AP  
Richard Wener, PhD

A CASE STUDY IN TRAUMA-INFORMED SUSTAINABLE  
DESIGN: JOHNSON COUNTY YOUTH & FAMILY SERVICES  
THURSDAY, NOVEMBER 6 | 1:10-2:25 PM

As the new Director of Community Corrections overseeing juvenile detention, Betsy Gillespie wanted a more forward thinking approach to not just juvenile justice and community engagement. The process pointed to a restorative, therapy-based treatment program designed around both the lives of high-risk kids and their families. The program and facility focus on the family unit, which can be the dysfunctional root in a juvenile offender’s life.

The design solution of the Youth & Family Services Center creates a welcoming and non-threatening environment for families. The warm materials, the use of natural light, and the incorporation of art were pivotal elements that were used to respond to the program focus on family therapy and restorative treatment. The facility was certified LEED Platinum, and was the first facility of its kind to achieve that level of certification.

SPEAKERS: Daniel R. Rowe, AIA  
Betsy Gillespie  
Bobbie L. Huskey, MSW  
Mark Ryan, AIA  
Tathiana Woolery

TRUE PUBLIC SAFETY: CHANGING  
IDENTITIES, CHANGING FACILITIES  
THURSDAY, NOVEMBER 6 | 3:10-4:25 PM

With thirty of the fifty states reporting less than 75% funding of their pension plans it is unlikely that staffing levels of local governments will return to pre-2008 levels soon. Cities will need to find ways to deliver services more cost effectively and with fewer staff. The true Public Safety model, where Police / Fire / and EMS services are delivered by one department, using cross trained staff is one possible solution. In this panel discussion we will describe the current model and discuss possible directions this service delivery is going, and its’ effects on Public Safety Facilities.

SPEAKERS: Michael E. Smith  
Brian Uridge  
Steve Drewniany

ONE MISSION - JUSTICE WITH DIGNITY AND SPEED: A  
STRATEGIC PLAN IN IMPLEMENTATION MODE  
FRIDAY, NOVEMBER 7 | 8-9:15 AM

In 2013 the MA Trial Court undertook a grass-roots effort to examine its practices and galvanize its workforce to embrace the changes needed to take the court system into the 21st Century. The process involved a current reality assessment followed by a planning and engagement phase. The result is a massive reform agenda that is being implemented throughout the court system, with extensive engagement of court staff as well as outside stakeholders.

Leaders of this process will explain how it was structured, and why, what were obstacles and challenges and what were successes and surprises. As part of the implementation phase, the court is developing a capital master plan and the planner leading that effort will identify how the strategic goals have informed the capital planning and the guidelines for future projects.

SPEAKERS: Elizabeth Minnis  
Amy Finlayson  
Atilla Habip  
Harry Spence  
Robert Fisch, AICP, LEED AP

INMATES AS TEMPORARY RESIDENTS:  
RICHMOND CITY JUSTICE CENTER A CASE STUDY  
FRIDAY, NOVEMBER 7 | 9:25-10:40 AM

Social justice in all its complex and contradictory connotations was a touchstone in designing this urban detention facility that serves inmates, staff, visitors and its community. Our Sheriff’s vision of the integration of the community he protects and the inmates for which he is responsible became essential to the conceptualization this facility. Awarded in a Public/Private design/build completion focused on total cost and value added features, operations were designed to both respond to efficient procedures as well as to conform to its limited site area in the shadow of the existing facility. Natural light and views to all inmate, staff and visitor spaces is one design goal and achieving LEED Gold is another. The careful integration of the 1032 bed facility into its urban neighborhood is also considered social justice for its concerned neighbors.

SPEAKERS: James Kessler, AIA, LEED AP BD+C  
C.T. Woody, Jr.  
Derek Brown  
Robert Karamitsos, AIA, LEED AP  
Roy C. Witham

COMMUNITY REENTRY FROM THE ST. LOUIS COUNTY JAIL  
FRIDAY, NOVEMBER 7 | 11 AM-12:15 PM

The St. Louis County Buzz Westfall Justice Center was completed in 1998 with a designed capacity for 1232 inmates. The average daily population in 2013 was 1331. Approximately 20% of the population have a serious mental illness and substance abuse continues to be prevalent. Solutions are not to just build more jail cells, but to partner with the community to develop EBP programs within jails and prisons to successfully reintegrate offenders to the community.

The Justice Center is an American Correctional Association accredited facility and a tour site for this conference.

SPEAKERS: Herbert L. Bernsen



BRIAN T. MEADE, AIA, LEED AP BD+C  
LAW ENFORCEMENT TRACK CHAIR  
Senior Associate / Design Director  
Dewberry Architects



ROUNDTABLE

After Gary Mohr’s Keynote  
MENTAL HEALTH ROUNDTABLE  
THURSDAY, NOVEMBER 6 | 12:30-1 PM

Thursday afternoon will include a mini-track around the larger issue of mental health. After Director Mohr’s keynote on “Building A System to Reduce Recidivism,” all attendees will have an opportunity to discuss the design implications of the national movement emphasizing treatment and pro-social activities at their tables.

Those who wish to continue the discussion are encouraged to attend the Corrections track’s afternoon sessions: “The Importance of Design for Special Inmate Populations” and “Towards Guidelines for Segregated Housing.” The day will end with a second roundtable in the track room led by the conference planning committee members.

After Thursday Sessions  
THURSDAY, NOVEMBER 6 | 4:25-4:55 PM

On Thursday, each track will end in a roundtable discussion of the day’s topics lead by the conference planning committee members.

After Closing Plenary  
PAY IT FORWARD - IT’S OUR PROFESSIONAL DUTY  
THE NEXT GENERATION OF JUSTICE LEADERSHIP  
FRIDAY, NOVEMBER 7 | 1:55-2:25 PM

“Who will be our next generation of leaders”? As several of our leaders/ mentors approach the sunset of their careers we must prepare to fill a void left behind. We owe it to our predecessors to push forward the best practices across our justice markets & to cultivate forward thinking ideas & concepts that will improve our justice system, even if it’s on an incremental basis. It’s our responsibility & duty to mentor the next generation in the same way our mentors nurtured us: PAY IT FORWARD.

- SPEAKERS:
- April Pottorff, AIA

Amy Phillips, AIA

Erin Costino Persky, Assoc. AIA

Gregory Cook, AIA

Maracya Lopez i Ferrer, PhD

SPEAKER BIOGRAPHIES

JAMES E. ALLIN  
Royal Ottawa Health Care Group

As Director of the Royal Ottawa Health Group Forensic Programs, took the clinical lead in planning the development of a 100 bed secure treatment facility for Provincially sentenced mentally disordered offenders with serious mental illness. This facility was designed to meet both the security needs of a correctional facility and mental health care needs of a hospital. Currently I have administrative responsibility for the clinical operations of the Saint Lawrence Valley Treatment Unit, Royal Ottawa Health Care Group, a 100 bed treatment facility for the treatment of mentally disorder persons under provincial sentence. The STU Program also plays a key academic role, providing teaching and clinical placement opportunities.

SCOTT A. ANDERS  
U.S. Probation Office,  
Eastern District of Missouri

Scott Anders, Deputy Chief for the U.S. Probation Office, Eastern District of Missouri, chaired a national Reentry Expert Working Group and assisted with the development of a federal partnership to implement a national systems-approach to reentry. The outcomes and partnerships established by the Eastern District of Missouri are recognized as national, best practices models. Scott achieved a Master of Public Administration at the University of Missouri in Columbia, Missouri in 1994. His educational background also includes Bachelor of Arts degrees in Public Relations and Communication from William Jewell College in Liberty, Missouri, and a two-term honors study emphasizing ethnic relations and logic at Oxford University in England.

BRAULIO BAPTISTA, ASSOC. AIA  
ZGF Architects LLP

With over 16 years of professional experience, Braulio Baptista is a Design Partner who embodies the intellectual curiosity and talent to sensitively integrate user values and aspirations with creative, innovative approaches. In his 14 years with ZGF, Braulio has been involved in a variety of projects with an emphasis on advanced technology and high-performance public and institutional buildings. Many of these projects have included extensive interaction with user groups throughout design. His responsibilities on projects have involved planning, conceptual design development, technical and design coordination, and documentation. Braulio earned his Bachelor of Architecture degree from the University of Oregon.

HERBERT L. BERNSEN  
St. Louis County Department of Justice Services

Mr. Herbert Bernsen is the Director of the St. Louis County Department of Justice Services. He is responsible for the overall operation of the St. Louis County Jail and the Division of Community Corrections. Mr. Bernsen began his career with Justice Services in 1972. He served as Deputy Director for 18 years. He has been the Director since 2010. Mr. Bernsen holds a Masters Degree in Social Work and is an Adjunct Professor at the St. Louis University Graduate School of Social Work. He has been designated as a Certified Jail Manager by the American Jail Association. He is a member of the American Correctional Association, Missouri Correctional Association and American Jail Association.

SAM C. BERTOLET  
USAO

1973-1977 Assistant Prosecuting Attorney St. Louis County.1977-1990 Assistant Circuit Attorney. 1990 Present Assistant US Attorney EDMO.

ROBERT BORAKS  
Parkin Architects Limited

Robert Boraks is a Principal with Parkin Architects Limited and manages Parkin’s office in Ottawa, Canada. Since Graduating from architecture in 1988, he has had experience working on numerous building typologies. Robert is Parkin’s lead designer for Justice and Security Institutions and has extensive experience in Health Care design. He has lectured at a number of Universities and served as an Adjunct Professor at the University of Guelph. Robert sat on a number of Government agencies including the Ontario Heritage Association and the Niagara Escarpment Commission. He is a recipient of a number of awards including a Queen Elizabeth II Golden Jubilee Medal and a Citation for Design Excellence from the AIA/AAJ.

CELESTE F. BREMER  
U. S. District Court, Southern District of Iowa

Chief U. S. Magistrate Judge Bremer represented the court for several major renovations of 1930-style U. S. courthouses. She served on the Space and Facilities Committee of the Judicial Conference of the U. S. Courts. She regularly teaches at the Federal Judicial Center, trains mediators nationally and internationally, and has taught graduate and law classes at Drake University, in addition to annual education programs for lawyers. She was awarded her doctorate in Adult Education from Drake University (dissertation topic: Judicial Occupational Stress), and her law degree from the University of Iowa College of Law. Before her judicial appointment in 1985, she was a prosecutor, private practitioner, and in-house counsel.

ALAN BRIGHT, FAIA, LEED AP BD+C  
HOK

Alan is a Senior Vice President and Design Principal in HOK’s San Francisco office and is recognized for his leadership in cost-effective sustainable building design with a particular expertise in justice facilities. He has more than 30 years of experience with major building projects in the United States and Asia encompassing the justice, laboratory, corporate, and healthcare sectors. He maintains a steady portfolio of award-winning projects from national and regional industry organizations and publications such as AIA, AAJ, CMAA, DBIA, Environmental Design + Construction, and California Construction magazine.

DEREK BROWN  
Turner Construction Company

Derek Brown served as the Project Executive for the Richmond City Justice Center. As the principal in charge representing the Design Build Contractor Mr. Brown oversaw the initial and final submission of the Design Build proposal to the City with particular emphasis on accommodating the City’s tight budget and ongoing Jail operations at the adjacent City Jail. The proposal preparation included initial key team member selection, construction materials and methods, scheduling, and cost. Mr. Brown was also responsible for the execution of the Design Build Contract. Mr. Brown has been involved in the design and construction of several justice related projects in his 19 year career with Tompkins Builders (Turner Construction).

ROGER CHAFFIN  
Calgary Police Service

Roger Chaffin is a 27-year member of the Calgary Police Service and presently holds the rank of Deputy Chief in charge of the Bureau of Organizational Support which consists of the Employee Services Division, Information and Technology Division and Infrastructure Services Division. In addition to being a member of the Chiefs Executive Committee, D/C Chaffin is on the following boards: National Police Information System Advisory Board, the Governance Committee for the Alberta First Responders Radio Committee, CPKN Board of Directors and Chairs the Canadian Association of Chiefs of Police Ethics Committee.



SPEAKER BIOGRAPHIES

HON. NOELLE C. COLLINS  
District Court, Eastern District of Missouri

Since December 1, 2013, I have served as a federal magistrate judge in the EDMO where I preside over criminal pretrial matters; and a variety of civil matters including civil lawsuits, social security disability appeals and state habeas corpus matters filed by Missouri prisoners.

Prior to my appointment to the bench, I worked in the same EDMO courthouse as an Assistant U.S. Attorney in Saint Louis for nearly a decade. I prosecuted many multi-district drug cases for several years and was named the Human Trafficking Case Coordinator for the U.S. Attorney’s Office in 2012. As a human trafficking prosecutor, I worked with a team of law enforcement officers, social workers and community advocates to provide direct services to victims.

GREGORY COOK, AIA,  
LEED AP BD+C, CCHP  
HOK

An architect with a rich background in diverse project types, and a proven focus cultivating collaborative relationships with clients that result in projects that uniquely balance aspirations, programmatic complexities, sustainable strategies and cost considerations. Since joining HOK’s Justice Practice in 2009, Mr. Cook has provided thought leadership with regards to the master planning, programming, and design of justice facilities by emphasizing on correctional health care. In July of 2013 Mr. Cook established the Justice Design Exchange, an online forum to discuss the unique challenges and demands inherent in designing secure institutions.

J. RICHARD DAVIDSON  
Dewberry Architects

Rick Davidson is an architect with 30 years of experience designing public and justice related projects including courthouses at the local, state and federal levels.

Rick was the principal designer and design director for the Clayton County Juvenile Courthouse in Jonesboro, Georgia that was planned and designed around core principles of restorative justice.

STEVE DREWNIANY  
City of Sunnyvale California  
Department of Public Safety

Steve Drenwiany has been the Deputy Chief for the City of Sunnyvale Department of Public Safety since 2011, where he has served in various positions since 1989 rising through the ranks from Public Safety Officer. In 2011, Deputy Chief Drenwiany was appointed by California Governor Edmund G. Brown Jr. to represent all of California Law Enforcement on the California Commission on Emergency Medical Services. Located in the Silicon Valley, the City of Sunnyvale Department of Public Safety is one of the largest fully-integrated Police, Fire, and Emergency Medical Services (EMS) public entities in the United States serving a City of over 146,000 residents increasing to a daytime workforce population of over 230,000 people.

DR. ATHANASSIOS ECONOMOU  
College of Architecture  
Georgia Institute of Technology

At the College of Architecture at the Georgia Institute of Technology, Prof. Economou teaches and researches shape grammars, parametric design, CAAD, and discrete mathematics and design. He is the Director of the Shape Computation Lab at COA and the Georgia Tech Study Abroad Program on Architecture and Art in Greece and Italy. Since 2007, he has been the Principal Investigator for Courtsweb: A Research Database of Federal Courthouses, funded by GSA and Administrative Office of the US Courts, which provides a formal description and analysis of court spaces. He is co-author with Dr. Thomas Grasl of The Grammar of Courthouses: A Formal Description (in press).

EVE EDELSTEIN, PHD, F-AAA  
University Arizona & IDS

Dr. Edelstein’s background in Neuroscience, Architecture and Anthropology translate human responses to built designs. As principal investigator in circadian rhythms (AIA College of Fellows Latrobe Prize), she demonstrated the impact of light on heart-rate. Collaborations yielded acoustic & visual virtual reality applications, synchronized with visual and EEG tracking, showing the impact of design on lighting, speech intelligibility, error, preference, & wayfinding. Eve lectures and teaches studios at University Arizona, and at NewSchool Architecture & Design, University California San Diego. Edelstein is 2013 Berkeley Teaching Fellow in Universal Design.

HON. JIMMIE M. EDWARDS  
Circuit Judge State of Missouri

Judge Jimmie M. Edwards is a senior member of the Missouri 22nd Circuit Court in the City of St. Louis, serving over 23 years. From 2007 to 2012 Judge Edwards, while serving as Administrative Judge for the Family Court, he grew frustrated by the rising number of high school dropouts with no job skills and no legitimate means to earn a living. Judge Edwards conceived an idea for an innovative type of school that could educate and supervise the court’s juvenile delinquents. With help from the Local School District, Goodwill Industries, the Family Court and numerous supporters the Innovative Concept Academy opened its doors in 2009. This first-of-its-kind school has received national acclaim from the CBS Early Show, the Today Show and the Wall Street Journal. PEOPLE magazine named Judge Edwards one of its 2011 heroes of the year. Ebony magazine selected him to its 2013 Power 100 most influential in America List and Chief Justice of the United States John Roberts presented Judge Jimmie M. Edwards with the William Rehnquist Award for Judicial Excellence-one of our nation’s highest judicial awards. In 2014, Judge Edwards received honorary Doctor of Laws Degrees from Saint Louis University and Eden Theological Seminary.

Due to their environment and home life his students do not have dreams, they have nightmares. Children cannot dream until they are taught what to dream about. Judge Edwards believes that dreams give children the hope for a better future and the determination to succeed.

DOUGLASS EVANS  
Kitchell

Kitchell was hired by the County to provide full service project and construction management services for the Calaveras Adult Detention Facility and Sheriff’s Administration Building project. I was the primary person responsible for oversight and management of the project during design and construction working closely with Dewberry and the County on the project.

ERIC FADNESS, AIA  
Nacht & Lewis

DR. ELIZABETH FALCON-BISHOP  
Correctional Healthcare Companies

Dr. Elizabeth Falcon, PsyD specializes in correctional mental healthcare. Dr. Falcon has been working for correctional healthcare vendors since 1999. During this time, she has been responsible for overseeing over 15 mental health prison systems and approximately 26 jail mental health programs. She provides guidance in evaluation, development, implementation, and monitoring of jail mental health programs across the U.S. Dr. Falcon has a doctorate degree in Clinical Psychology and has received specialized training in corrections for 2 years at Cook County Department of Corrections in Chicago, Illinois.

JAY FARBSTAIN, PHD, FAIA  
Jay Farbstein & Associates, Inc.

Jay Farbstein is recognized for his contributions in the field of justice facility planning. With over 100 projects, he has planned juvenile & adult correctional facilities and courts in many states. He has received numerous national awards and has been invited to lecture in Japan, Canada and France, been interviewed by 60 Minutes and quoted in Time, the New York Times, Psychology Today, and architectural magazines. He is a registered architect in California, holds degrees from UCLA, Harvard, and the University of London. He is a fellow of the AIA and heads its Academy for Justice Architecture Justice Facility Research Program. He has researched the application of neuroscience and evidence-based design findings to correctional facilities.

MELISSA M. FARLING, FAIA, LEED AP  
Jones Studio Inc.

Melissa Farling has provided leadership to the profession and community with a primary focus on the impacts of architecture on people. She is a fellow of the AIA, co-chairs the AIA’s Academy of Architecture for Justice Research Committee, and is a member of the Advisory Council for the Academy of Neuroscience for Architecture. She served as one of the principal investigators for a National Institute of Corrections funded study to examine impacts of views of nature on stress in a jail intake area. Her 25 years of experience has focused on justice and large-scale public projects. Melissa gives frequent presentations on evidence-based design applications. and holds degrees from UNC Charlotte and the University of Arizona.

AMY FINLAYSON  
Division of Capital Asset Management and Maintenance, Commonwealth of Massachusetts

Amy Finlayson is a project manager with the Division of Capital Asset Management and Maintenance. Amy is a registered architect with Passive House certification and several years experience in

Residential, Automotive/Industrial and Recreational architecture. Energy conservation and sustainability are additional areas of interest; she would like to see Passive House applied at a greater scale to all State projects. Since joining DCAMM, she has toured courthouses across the Commonwealth with the project team while providing planning & design input and coordination support to the program manager.

ROBERT FISCH, AICP, LEED AP  
CGL Ricci Greene

Rob Fisch is a Sr. VP at CGL Ricci Greene, where he leads the planning, programming and feasibility study work for many of the firm’s major courthouse projects. Over the past 25 years, Mr. Fisch has served as consultant to judges, mayors, legislators and other officials on courts projects throughout the country. His experience includes Master Plans for several large court systems, feasibility studies and programming many courthouses and space/design standards for several states and local jurisdictions. He has a BA in Environmental Design from SUNY Buffalo and is a frequent author and speaker on the topic of courts planning and design.

SCOTT R. FRAKES  
Washington Dept. of Corrections

Responsible for administrative oversight of six adult correctional facilities in Washington State housing approximately 8,400 offenders. 32 years in corrections. Previous assignments include Superintendent of Coyote Ridge Corrections Center (CRCC), and the Monroe Correctional Complex (MCC). Oversaw the design of a 2000 bed expansion of Coyote Ridge Corrections Center, 2005-2008 (first “Gold” LEED prison campus), and served on the design team for Stafford Creek Corrections Center (1995-1997).

Graduate of The Evergreen State College. Past President of the Washington Correctional Association. Currently appointed to the Public Safety Review Panel.

BETSY GILLESPIE  
Johnson County, Kansas

Elizabeth “Betsy” Gillespie has been the Director of the Johnson County Department of Corrections since April 2007. She is responsible for the operations of Adult Community Corrections Programs, Juvenile Community Programs, and Juvenile Detention. She has been in the field of corrections for 39 years in three different states. She has been very active on the Johnson County Criminal Justice Advisory Council and that body’s initiative, the Juvenile Detention Alternatives Initiative (JDAI) which officially began in December 2011. Betsy serves as Johnson County’s Site Coordinator for the local JDAI process.

JEFF GOODALE  
HOK

Jeff Goodale leads HOK’s global justice practice which includes all facilities that contribute to the justice system, from law enforcement and emergency operations centers, to courthouses, to detention and corrections facilities. While HOK has experience in a broad spectrum of project sizes and complexity, their unique expertise is founded in the planning, programming and design of large, special mission facilities, including the in the emerging medical/ mental health field. HOK is dedicated to facilities that are safe, efficient, staff enhancing, low recidivism and low energy users. With over 25 years of direct experience in the government and justice design community, Goodale has led design teams for several new therapeutic facilities.

ATILLA HABIP  
The Ripples Group

Mr. Habip is a Founding Partner of The Ripples Group and head of its strategy consulting and public sector practices. He has over two decades of management consulting experience, starting at Bain & Co. Also served as CEO at CitizensHealth. Prior to consulting, Mr. Habip had an engineering and management career at International Paper. He holds BS and MBA degrees from Columbia University.

Mr. Habip co-led MA Trial Court Strategic Planning and is currently involved in its implementation. He has also been engaged by the MA Supreme Court.

LARRY HARTMAN, AIA, LEED AP  
HDR

Larry has over 30 years of justice experience, and is known for his skill in leading collaborative project teams that are responsive to clients needs. He has successfully programmed and designed complex projects such as major prisons, adult detention centers, juvenile detention centers, substance abuse treatment centers, higher education facilities, materials laboratories and courts and has been involved in security planning of large public works projects. Larry is former Chair (2009) of the American Institute of Architecture, Academy of Architecture for Justice (AAJ) Advisory Group.



SPEAKER BIOGRAPHIES

JULIA S. HUGHES, AIA, LEED AP BD+C  
Julia Hughes, AIA

Julia currently chairs the AIA AAJ Sustainable Justice Committee and has led multiple endeavors to further social sustainability including Case Studies analyzing the Sustainable Justice Guide and a video project hi-lighting successful implementation of Sustainable Justice Principles. Julia’s focus on justice architecture has included award-winning courthouse and detention/corrections facilities on the east and west coasts and various communities in-between that are living, breathing examples of Sustainable Justice Principles in practice. Julia has broadened the awareness of this new approach to sustainability and expanded the reach of the Committee’s advocacy to many audiences including this year’s Greenbuild conference in New Orleans.

LARRY D. HURLBERT, AIA, DBIA  
Integrus Architecture, P.S.

Mr. Larry Hurlbert, principal at Integrus Architecture and leader of the firm’s justice group, brings 34 years experience in the design, programming and management at all levels of justice architecture. He has been responsible for many successful corrections and detention center projects, including design-build and GC/CM projects. Included are multiple phased projects at the Washington State Department of Correction’s (WADOC) Washington Correctional Center for Women. The most recent being the new Health Care Facility. Larry is a licensed architect in the states of Washington and California, and a member of AIA, American Correctional Association, and the Design-Build Institute of America (current President-DBIA Northwest Region Chapter.)

BOBBIE L. HUSKEY, MSW  
Huskey & Associates

Bobbie L. Huskey is a trained social work clinician, public policy analyst and strategic planner with 38 years of experience in corrections as a juvenile justice and criminal justice consultant. She has served as a juvenile and corrections consultant to 35 states and produced 169 master plans, 87 of which have been juvenile justice master plans. Bobbie has provided training and technical assistance to counties in 81 jurisdictions on evidence-based practices and programs that have led to a reduction in risk and need with juvenile offenders. Huskey & Associates has led the planning and programming of 10 group homes, 30 juvenile detention centers, 5 state juvenile correctional facilities and 7 multi-purpose Youth and Family Service Centers.

MICHAEL S. JUSTICE, AIA, LEED AP  
Dewberry Architects

Mike has been involved extensively with criminal justice facilities at the city, county, state and federal levels, including corrections, courts and public safety projects for the past 14 years. He has been involved in projects ranging from \$5 million to \$350 million. Mike has successfully managed several projects through the AB900 funding and BSCC design review process. He has most recently been involved in the Dewitt Nelson Correctional Annex- DNCA (Stockton, CA) for the CDCR, The Mule Creek Infill Complex - MCIC (Ione, Ca) for the CDCR, the new Calaveras County Adult Detention Facility / Sheriff’s Office (San Andreas, CA) and the Sutter County Jail Expansion (Yuba City, CA).

ROBERT KARAMITSOS, AIA, LEED AP  
HOK

Mr. Karamitsos has focused his 30 year career on the architectural design of justice facilities producing modern and efficient buildings that acknowledge the specific needs of the people they serve. He recognizes the important civic influence these projects have on their surrounding communities and is experienced in all project phases including planning, conceptual design, documentation and construction. Having a broad based knowledge of the different building types and strong technical background, he has consistently delivered award winning projects that advance the field of justice architecture.

JAMES KESSLER, AIA, LEED AP BD+C  
HOK

As Director of the HOK Washington, DC Justice Focus Group, Mr. Kessler directs the design process from planning through construction. He provides leadership on all design decisions, reviews, and coordination of activities in architecture, interior design and site design and serves as the primary client contact. Mr. Kessler’s design work has been published extensively. He has authored chapters in correctional reference books such as “Unit Management in Prisons and Jails”, “Prison Architecture: Policy, Design and Experience” and in the “Planning and Design Guide for Secure Adult and Juvenile Facilities”. Mr. Kessler has also spoken at professional events including conferences for the AIA AAJ, ACA, AAJ and the ICPA.

KIMBERLY KILGOUR,  
AIA, LEED AP BD+C  
ZGF Architects LLP

Kimberly Kilgour is a Principal with 16 years of professional experience in the planning, design, and coordination of a variety of complex facilities. She is responsible for organizing and directing teams in the production of schematic design, design development, and construction document drawings and specifications, as well as interfacing with clients and leading design presentations. The challenge of turning a design vision into a built reality is Kimberly’s inspiration. Some of her recent clients include Soka University, J. Craig Venter Institute, California Science Center, and Superior Court of California. Kimberly holds a Bachelor of Arts in Economics from Pomona College, and a Master of Architecture from Cal Poly-Pomona.

MARY ANN LAZARUS,  
FAIA, LEED AP BD+C  
HOK / AIA Resident Fellow

Mary Ann Lazarus, FAIA, LEED AP BD+C, who in March 2014 started a 2-year position at the National AIA as a Resident Fellow for Sustainability. Lazarus, an architect with HOK in St. Louis since 1980, has served as the global firm’s director of sustainable design since 2001. She co-authored the second edition of “The HOK Guidebook to Sustainable Design,” an influential textbook used by design professionals and universities. Lazarus won Eco-Structure’s 2012 Evergreen Award in the Perspectives category, which recognizes one individual each year for advancing sustainable design. In 2011, based on her significant contributions to sustainable design over her career, the AIA elevated Lazarus to its College of Fellows.

MICHAEL LEBOEUF, FAIA  
Dewberry Architects

Michael LeBoeuf is the Dewberry Practice Segment Leader for Courts Architecture and has practiced for more than 35 years, with the majority of his career focused on the design of large urban government buildings in the United States; projects that represent substantial investments by our society to create buildings that define the urban core of our cities. Some of his signature projects include the New Castle County (DE) Courthouse, Pueblo County (CO) Courthouse, US Jacksonville Courthouse, (FL), the Orange County (FL) Courthouse Complex in his home city of Orlando and design excellence projects for both the US General Services Administration and Administration of the Court, (CA).

Michael’s work has contributed to the evolution of the modern courthouse through design that has enhanced building efficiency and transformed courtroom design and court operations through design excellence. He has served as the lead designer on 35 courthouses compiled to be over 550 courtrooms and over 8,000,000 square feet of courthouse facilities around the United States.

APRIL LENKEY  
HOK

April Lenkey leads HOK’s justice practice in the Los Angeles office and has focused most of her career working on detention facilities. In her role as the LA justice leader, she holds primary responsibility for the development, delivery and quality of all of the LA office’s justice projects including the coordination of multi-discipline teams to ensure that Architectural services are delivered efficiently. She is a registered Architect and LEED Accredited Professional with over 17 years of experience. Her strong technical knowledge, collaborative team leadership and extensive experience with the programming, planning, design and construction of detention facilities has led to the completion of many successful projects.

MARAYCA LOPEZ I FERRER, PHD  
CGL RicciGreene

Ms. Lopez has 15 years of experience in the field of corrections with an extensive education & international background in penology & criminology. Having exclusively dedicated her academic & professional careers to the correctional sector, she possess a unique & acute knowledge of corrections management and operations. At present she serves as a Senior Corrections analyst and planner for CGL RicciGreene Associates, a criminal justice planning and design firm based in New York, a full-service architecture firm that has achieved national pre-eminence in the programming, planning and design of justice facilities. She was recently featured as an emerging professional within the justice industry in the 2014, 3rd quarter AAJ journal.

LORENZO LOPEZ, AIA LEED AP  
Nacht & Lewis

Lorenzo is a Vice President with Nacht & Lewis Architects. For 20 years he has focused on planning, codes and sustainability. He recently co-chaired a task group in CA charged with evaluating the current codes relative to justice facilities and led authorship on new code sections implemented to allow for more economical construction as well as benefit operations and sustainability. Lorenzo is currently a member of the AAJ’s Advisory Group.

Lorenzo planned eight mental health facilities for CDCR, all of which received LEED Silver or Gold certification, overcoming CDCR’s strict security guidelines the California Building Code; these projects had to satisfy requirements for both correctional and medical facilities.

ERICA LOYND  
DLR Group

Erica is an expert in the design of justice facilities, including corrections and detention centers, courts, and public safety buildings. Her design approach centers on conversation with the owner and client to fully understand their goals, needs, and the expectations of stakeholders. She understands this is especially important in public projects that frequently incur close scrutiny from community members who demand sound decision-making in how public funds are invested. Erica is particularly passionate about sustainability. She focuses on unifying all team members to explore design options that take advantage of passive opportunities in orientation, envelope, daylighting, natural ventilation, and material choices.

CAPTAIN JON E. MARHOEFER  
San Bernardino Sheriff Department

Captain Jon Marhoefer is a 29 year veteran of the San Bernardino County Sheriff-Coroner Department. He currently serves as the commander of the High Desert Detention Center, a 2098 bed facility for pre-trial and sentenced inmates located in the High Desert of San Bernardino County. In 2005 he oversaw the purchase of a former private prison and its remodel into a local detention facility. For the last eight years he has served as the Department’s Project Manager for San Bernardino County’s 1398 bed \$142M AB900 jail expansion project. He is an American Jail Association Certified Jail Manager.

BRENT MARTIN  
CO Architects

Prior to pursuing his career in architecture, Brent Martin studied fine art and graphic design. He worked for seven years as a graphic designer, and designed several public art pieces, before pursuing a Masters in Architecture. He is interested in developing locally connected artwork for the public realm, and seeks to find such opportunities even on projects without established art budgets. He is currently pursuing a series of landscape paintings, studying how we see and use the land. The works created for the South County Justice Center were part of this study.

MARY ANN MCGIVERN  
Sisters of Loretto

Mary Ann McGivern worked for many years with homeless families in St. Louis, MO and she is active in the peace movement, arrested a number of times. Then she became director of Project COPE, a prisoner re-entry program. Since her retirement, she continues to work with men and women released from prison. She is a member of a state-wide criminal justice task force. She urges the Missouri legislature to save money and improve public safety by alternative sentencing, shorter sentencing, better job training and strong mental health and drug and alcohol treatment programs. She writes for the National Catholic Reporter on prison issues, including solitary confinement.

ELIZABETH MINNIS  
Division of Capital Asset Management and Maintenance, Commonwealth of Massachusetts

Elizabeth Minnis oversees the Commonwealth’s \$500 + million capital program of planning, design and construction for Higher Education, Public Safety, Judiciary, Human Services and other executive branch agencies and state offices. With a staff of over 100 architects, engineers and construction professionals, the Office of Planning, Design and Construction manages teams of A/E firms, contractors, subcontractors and construction managers to develop a wide range of projects including strategic facilities and campus master plans, repairs, renovations, energy efficiency upgrades and new construction.



SPEAKER BIOGRAPHIES

**GARY MOHR**  
*Ohio Department of  
Rehabilitation and Corrections*

Gary C. Mohr is director of the Ohio Department of Rehabilitation and Correction (DRC). Appointed by Governor John Kasich in January 2011, he is a 40-year corrections professional with a national reputation for innovative and efficient prison management. Throughout his career, Director Mohr has served in a number of corrections leadership positions in both public and private sectors.

In 2002, Director Mohr served as deputy director and superintendent of the Ohio Department of Youth Services. Previously, he was DRC deputy director for administration, as well as a deputy director in the agency’s Office of Prisons, where he supervised, mentored and advised a region of the state’s wardens. In addition, Director Mohr has served as warden at the Ross Correctional Institutional, Chillicothe Correctional Institution, and the Correction Reception Center.

From 1992-1994, Director Mohr served as director of the Governor’s Office of Criminal Justice, where he led the investigation into the cause of the 1993 Lucasville riot. Many of his team’s recommendations for preventive measures and improved conditions were incorporated into DRC’s standard operating policies and adopted by prison systems across the nation. He also chaired the Governor’s Task Force on Gun Violence.

In 2005, Director Mohr founded Mohr Correctional Insight, where he advised the Corrections Corporation of America in areas of staff leadership and development, and implementing unit management.

**GARRET MUNCH**  
*Savanna Studios*

Garret Munch is a recent graduate, earning a BS in Landscape Architecture from Iowa State University in 2013. In his tenure at ISU, Garret and one of his peers collaborated to design the Multipurpose Outdoor Classroom for the Iowa Correctional Institution for Women, the first landscape design-build project to be built at ICIW. Garret is a landscape design Associate at Savanna Studios, LLC in Johnston, Iowa where he has designed and managed a wide range of landscape projects.

**DAN MUNN**  
*DLR Group*

Mr. Munn’s experience combines strong credentials in the management of projects with technical expertise in all levels of professional services. He has fulfilled key roles in the planning, design and construction of projects at the city, county, state and federal levels. His background has afforded him the opportunity to gain in-depth knowledge in security and functional requirements, codes, space utilization, materials selection, equipment and buildings costs. He is a strong leader and team player. As the design engineering leader for DLR Group, he coordinates the design innovations and practices for the disciplines on a variety of projects. A few notable government agencies he has worked with include WDOC, ODOC, and FBOP.

**TONY MURPHY, AIA, NCARB**  
*Dewberry Architects*

Tony Murphy has 23 years experience as an architect, primarily as Project Architect and Construction Administrator. Recent projects include the Calaveras County Adult Detention Facility and Sheriff’s Administration Building, San Andreas, CA, the Dewitt Nelson Conversion Center, Stockton, CA and the East County Detention Center, Indio, CA. Tony also served as the on site Architect/Construction Administrator on the Stanley J. Roszkowski United States Federal Courthouse in Rockford, IL, a GSA Design Excellence project. Tony holds Bachelor and Master of Architecture Degrees from the University of Illinois.

**PAUL NAGASHIMA, AIA, LEED AP  
HDR**

Paul has more than 30 years of professional experience, specializing in government, detention, and corrections for the last 23 years. He serves as a senior project designer and is an award-winning designer in his own right; he feels design excellence is essential for any building type. He has won numerous design awards including an AIA Honor Award for the design of the Japanese American National Museum. He has also won AIA Awards and has been recognized for design excellence by many business and civic organizations.

Paul has designed over 16,000 beds in detention and correctional facilities across the United States.

**BRIAN NELSON**  
*Uptown People’s Law Center*

Brian Nelson was imprisoned in the Illinois Department of Corrections (IDOC) right after he turned 17. He spent 28 years in prison, 23 of which were in solitary. He spent 11 years as a circuit rider before being transferred to a minimum security prison in New Mexico. From there, he was taken to Tamms’ supermax without notice, a hearing, or any disciplinary violations. He spent 12 years at Tamms before his release from prison in June, 2010. Nelson studied law during his imprisonment, and has five legal assistant/paralegal diplomas. He successfully tried federal jury and bench trials on his own behalf and helped other convicts with their legal matters. Currently, he is employed at the Uptown People’s Law Center as Prisoner Rights Director.

**DAVID D. NOCE**  
*U.S. District Court,  
Eastern District of Missouri*

I have been appointed to preside over the District Court’s Project EARN, the court’s Drug Court, a federal reentry court. Also, I was a member of the Judges’ Policy Committee for the Design and then the Construction of the Thomas F. Eagleton U.S. Courthouse in St. Louis.

**SUSAN OLDROYD, FAIA, LEED AP**  
*Susan Oldroyd Architect*

Susan Oldroyd has planned, programmed and designed a wide variety of judicial and other public projects. Susan was project manager of the Trial Court Facilities Standards (2006) for the California Administrative Office of the Courts (AOC) where she first researched the wide variety of standards required by court facilities, including safety in public spaces.

Susan Oldroyd FAIA was chair of the AAJ Sustainability Committee and Partners Committee. She chaired and co-chaired the AAJ-Bay Area in 2005 and 2012.

**ERIN COSTINO PERSKY**  
*CoRich Communities, Inc.*

Erin Costino Persky is a recent Master of Science in Architecture graduate from the Newschool of Architecture and Design in San Diego, California. She holds a Bachelor of Arts in Psychology and Social Behavior and a Master of Science in Political Science, both from the University of California, Irvine. Her most recent thesis is a justice center that integrates justice partners and public space, and her current research focuses on applying biophilic design strategies to correctional environments.

**AMY PHILLIPS, AIA**  
*Jacobs, Global Buildings*

Amy Phillips is the Deputy Director of Architecture and Project Architect at Jacobs Global Buildings in Saint Louis. She has served as Chair of the Board and mentor with ACE Mentoring Saint Louis for the past 7 years. Her project experience includes The Pentagon Renovation, various Courts and Detention facilities, Science and Technology Research Buildings, and Sports and Recreation Facilities. Amy is a current member of the AAJ’s Advisory Group and serves as a liaison for the AAJ’s Emerging Professionals, the Communications subcommittee, as well as the Conference subcommittee. She has a B.A. from The University of Iowa and a Master’s of Architecture from The University of Kansas.

**APRIL POTTORFF, AIA**  
*CGL RicciGreene*

April Pottorff, AIA is a Principal with CGL Ricci Greene Associates. As a nationally recognized expert & leader in Justice planning & design, April advocates for a systems approach & evidence-based design applications. The results of her work are strong civic buildings that enhance & contribute to the communities in which they are located. April has authored several articles & her work has been published & profiled in national journals & magazines. She regularly lectures at national conferences on topics that address justice facility planning & design issues. She received a Bachelor of Architecture professional degree from the University of Kansas & a Masters of Planning in Urban Design at City College, City University of New York.

**BEVERLY PRIOR**  
**FAIA, NCARB, LEED AP**  
*AECOM*

Beverly Prior, FAIA, LEED AP is an architect and planner whose experience includes the full range of justice projects. She is a national leader in the justice design community and is the 2014 AAJ Justice Facilities Review jury chair. Out of a passion for creating livable and sustainable communities, she co-founded the AAJ’s Sustainable Justice Committee, and with this group developed the “Green Guide for Justice” and the “Sustainable Justice Guidelines.” She has presented at several conferences including AIA, AAJ, ACA, and DBIA. Inspired by Jonas Salk’s “World Population and Human Values,” she is engaged in investigating the shift in values and the subsequent impact on our justice system in the next epoch.

**CURTISS PULTIZER**  
*Pulitzer, Bogard and Associates*

Curtiss J. Pulitzer is one of the nation’s leading experts in justice facility design and operations planning, with over 35 years of experience in the planning of justice facilities. A criminal justice planner and a licensed architect, Mr. Pulitzer has been involved in justice facility planning and development in more than 40 states, serving clients at all levels of government. Mr. Pulitzer’s primary focus as a Principal of Pulitzer/Bogard & Associates, LLC , is on facility planning and operations, employing a needs and evidence based approach in defining the user’s requirements. Mr. Pulitzer and his firm serve as the Corrections Specialist for the Iowa Department of Corrections.

**JEFF PURTELL**  
*Dewberry Architects*

Jeff Purtell oversees business development activities for the Justice Architecture sector for Dewberry, which includes segments in Corrections, Courthouses, and Public Safety. Tasks involve working with design team for delivery methods to include design-build, design-bid-build, and P3. Formerly Jeff represented a manufacturer of building systems for Correctional facilities and was involved in procurement/contracting for projects such as SCI Phoenix, PA, Palm Beach County Jail, FL, Chatham County Jail, Savannah, GA, and the RSW Regional Jail, Front Royal, VA.

**KARIE RAINER, PH.D.**  
*Washington State Department of Corrections*

A licensed Psychologist since 1994, Dr. Rainer began working with the Department of Corrections in 2000. She has worked in both women’s and men’s prisons in both outpatient and residential treatment units. She took a break from Corrections for a few years to work at the state’s psychiatric hospitals. Since returning to the Department of Corrections, she has had the privilege to work with staff from across the state to enhance the mental health services delivered and the system of care.

**GLADE F. ROPER**  
*Tulare County California Superior Court*

Judge Roper has been a judge for over 25 years, retiring June 30, 2013. He still sits full-time on assignment from the Chief Justice of the California Supreme Court and is assigned to an unlimited civil calendar. He was chiefly responsible to represent the court during the construction of a new 9 courtroom South County Justice Center completed October, 2013. The process took over 10 years from conception to completion. During that time he worked closely with the architects, the builders, state, county and city officials in selecting the site, designing and planning the building, which cost approximately \$93,000,000. He is an expert on the development and operation of Drug Treatment Courts and has spoken in 29 states on the topic.

**RONA ROTHENBERG, FAIA, LEED GA**  
*County of Alameda General Services Agency*

Rona G. Rothenberg, FAIA, Co-Chair of the AAJ Academy of Justice Conference for 2014 is an architect who has committed her career to service in government and industry. As a senior professional staff of large capital planning and building programs within corporate, non-profit health healthcare, university medical center and public institutions “from the inside out,” for the past 27 years she has been a professional leader in delivering over 100 significant projects in building programs for Stanford University, Kaiser, Allianz AG Fireman’s Fund Insurance Company, and for the past 13 years as a founding member of the capital program team for the Judicial Council of California’s \$8B historic courthouse replacement program (retired). Currently, she is a senior staff in local Bay Area government, and as the Capital Program Manager for Alameda County, California, her team provides project management services locally of a \$600 Million building program including a large new justice campus, as well as important project in adult and juvenile detention buildings, a crime laboratory, fire station replacement program, and libraries, community centers and government administration buildings. Elevated to the College of Fellows in 2008, she has continued lecturing and writing widely on topics relevant to corporate and public architecture. Rona served as Chair of the Public Architects Advisory Group of the national AIA in 2013 and its national conference chair in 2012 and looks forward to additional leadership roles next year at the state and national levels. Rona holds a Master of Architecture from U.C. Berkeley and a Bachelor of Science from the Pennsylvania State University Magna Cum Laude. She is also an accomplished gardener, baker, singer, dog lover and marathon walker, and continues her original career interest in education as an IDP peer and mentor of young and emerging architects. Married for 35 years to a Vietnam veteran, she is the proud mother of two grown children.

SPEAKER BIOGRAPHIES

DANIEL R. ROWE, AIA  
Treanor Architects

Dan Rowe serves as the president of Treanor Architects and leads the Treanor Justice team. He has dedicated his 30-year architectural career to the programming and design of jails, juvenile and court facilities, leading the design and production effort on over 70 justice project produced by Treanor Architects. This hands-on experience allows Dan to keep current on trends in building programming, design and operations.

MARK RYAN, AIA  
Mark Ryan Studio I Architects

Mark Ryan brings 20 years of experience in secure juvenile facility design and planning. Mark received his initial training in architecture at the University of Cincinnati, while also lettering in intercollegiate athletics. Along his path he has worked on a wide array of projects, ranging in scale and scope from planning entire new towns to executing individual pieces of furniture. His office, mark Ryan studio, is a full service architectural firm with a diverse portfolio of award winning projects and a special passion for the design of juvenile justice facilities in all their many variations. Mark has lectured frequently on juvenile justice issues and his work in this arena has been recognized with many accolades.

DR. JONATHAN SALK  
Co-Author, World Population and Human Values: A New Reality

Dr. Jonathan D. Salk, is co-author with his father, Jonas Salk, of the original 1981 “World Population and Human Values: A New Reality,” which while written 30 years ago provides a stunningly accurate framework for understanding the perplexing nature of our times. Jonathan is a graduate of Stanford University with a degree in anthropology, studied child development with emphasis on the biology of behavior at Harvard, received an M.D. from the USC Keck School of Medicine and trained in psychiatry at UCLA. The Salk family has made a profound impacts on the built environment including challenging the AIA to understand the impact of architecture on our experience, leading to the founding of the Academy of Neuroscience for Architecture (ANFA).

ROBERT W. SCHWARTZ  
FAIA, LEED AP BC+C  
HOK Group Vice President

Bob has dedicated the last thirty years to improving the design and operation of justice facilities. His experience includes some of the most noteworthy courthouses and law enforcement, detention and correctional centers in the U.S. with twenty-four published in the Justice Facilities Review. Participation on national committees includes the NSCS “The Courthouse: A Planning and Design Guide for Court Facilities – 1990 and 2000”, the Courthouse Access Advisory Committee advising the U.S. Access Board, the GSA Independent Court Panel on Courthouse Cost, as well as the AAJ/InfoComm committee developing audio visual and information technology guidelines for courthouses.

JAMES W. SIMEO JR.  
CO Architects

James Simeo is a principal with CO Architects, a Los Angeles-based architectural practice that has achieved national prominence for expertise in the civic, justice, and other institutional building sectors. With over 20 years of experience in the planning, design and management of large institutional facilities, James’ experience includes projects for the Superior Court of California, for five University of California campuses, and for higher education and healthcare organizations throughout the U.S. His projects have been cited with awards from the AIA California Council, AIA Los Angeles, Modern Healthcare and Healthcare Design. CO Architects was named the AIA California Council’s 2014 Firm of the Year, its highest honor.

WILLIAM M. SINGER, AIA,  
LEED AP BD+C, NCARB  
IBI Group \* Gruzen Samton

As a courts architect I have a vested interest in the social responsibility of architectural design of justice facilities, especially as it applies to detainees, courts officials and staff, and the public. I have been intimately involved in the design and implementation of three substantial court projects--two US CHs and one NY State CH. I am a long-standing and currently active member of the Committee for Architecture and Justice of the AIA NY Chapter. I co-chaired the committee’s program for the 2007 International CAJ Conference in Brooklyn, NY, and am currently involved in a perimeter security project implementation at a notable US CH.

MICHAEL E. SMITH  
Nacht & Lewis Architects

Mr. Smith has specialized in Public Safety Architecture for most of his 33 year career. He has participated more than 45 Public Safety projects in 13 states. Michael worked for 29 years with Leach Mounce Architects and is currently head of the Public Safety sector of Nacht & Lewis Architects.

HARRY SPENCE  
Massachusetts Trial Court

I have dealt with capital planning issues throughout a career in public service: as Court-Appointed Receiver for the Boston Housing Authority, the third largest public housing program in the country; as Receiver for the bankrupt City of Chelsea, MA; as Deputy Chancellor for Operations for the NY City school system; and now as Court Administrator for Massachusetts.

RAPHAEL SPERRY  
Architects / Designers / Planners  
for Social Responsibility

Raphael Sperry, AIA, LEED AP, is president of Architects / Designers / Planners for Social Responsibility (ADPSR), and the first architect to receive a Soros Justice Fellowship from the Open Society Foundations. He researches the intersection of architecture and planning with human rights with a special focus on prisons and jails, and advocates for design professionals to play a larger role in supporting human rights in the built environment. He was the inaugural winner of the AIA San Francisco chapter Young Architect Award in recognition of his “engagement with public policy issues ranging from sustainability to social justice to community engagement.” He is an active member of AAJ’s sustainability committee.

JULIE STEVENS  
Iowa State University

Julie Stevens is an Assistant Professor in Landscape Architecture at Iowa State University where she teaches courses in planting design, plant technology, design studios and research seminars. She holds a BS in horticulture and a Masters of Landscape Architecture. Stevens has been working with the Iowa Department of Corrections on a research and outreach project to develop a landscape master plan for the Iowa Corrections Institution for Women. This ongoing effort supports important research in environmental psychology related to offender behavior and recidivism. In addition to improving the restorative benefits of the outdoor environment, this project offers students opportunities for service learning and design-build project experience.

STEVEN C. TESKE  
Juvenile Court of Clayton County

Judge Teske was appointed to the juvenile court of Clayton County in 1999 and currently serves as the chief judge. The Governor of Georgia has appointed him to several boards including the Judicial Advisory Council of the Department of Juvenile Justice, Children and Youth Coordinating Council, Governor’s Office for Children and Families, Commission on Family Violence, Georgia Child Welfare Reform Council, and the Georgia Criminal Justice Reform Commission. He has published several articles on detention reform and child advocacy in the Juvenile & Family Court Journal, Journal of Child & Adolescent Psychiatric Nursing, Juvenile & Family Justice Today, & Georgia Bar Journal. He has testified twice before Congress and several state legislature.

JULIA TIBBS  
St. Louis YouthBuild

Julia Tibbs is the Executive Director of St. Louis YouthBuild. For the past 19 years she has been committed to helping low-income young adults, ages 18 to 24 to work full-time for 6 to 24 months toward earning their GEDs and learning job skills by building affordable housing in their communities. Leadership development and community service have been her focus for the young people. The students earn college scholarships through AmeriCorps for their homebuilding and other community service. At exit, they are placed in college, jobs, or both.

BARB TOEWS  
Graduate School of Social Work and Social Research, Bryn Mawr College

Barb has more than two decades of experience as a restorative justice practitioner and educator. Her current research focuses on the relationship between restorative justice, environmental design, and psycho-social-behavioral and judicial outcomes. This research invites incarcerated individuals to design spaces in which to meet a variety of personal, interpersonal, and social needs. She teaches undergraduate courses on restorative justice and architecture/design, courses taught in correctional facilities, with incarcerated students and traditional college students participating as co-learners. Barb has an MA in Conflict Transformation and is a PhD Candidate at Bryn Mawr College’s Graduate School of Social Work and Social Research.

BRIAN URIDGE  
Kalamazoo Public Safety

Assistant Chief for Kalamazoo Public Safety, which is the largest fully integrated Police, Fire and EMS organization in the United States, combining law enforcement and fire services into a unified organization. The force is comprised of over 287 employees with a \$34M budget, providing services to a city population of 77,000.

Chief Uridge worked as a Senior Public Safety Administrator and for over 23 years held every rank within Public Safety managing law enforcement, fire service, EMS and tactical security services. Chief Uridge has extensive knowledge in command leadership, asset protection, risk management, community relations and policy and procedure implementation.

DEANNA VAN BUREN  
FORUM Design Studio

Deanna Van Buren currently sits on the national board of ADPSR and is the founding partner of FOURM design studio, a firm creating spaces for peacemaking and restorative justice. She has recently been awarded a Byrne Justice Innovation Grant with the Center for Court Innovation to develop a peacemaking center in Syracuse NY, the first of its kind in the US. Funded by the Fetzer institute, her practice is also running design studios with incarcerated men and women and writing the first design guidelines for creating restorative spaces in schools. Deanna received her BS in Architecture from the University of Virginia, an MARCH from Columbia University and has recently completed The Loeb Fellowship at Harvard’s Graduate School of Design.

ENZO VICENZINO  
Stantec Architecture Ltd.

Enzo is a registered architect in both Canada and the United States. Through his 27 years of experience, Enzo brings a vast range of award winning project experience in judicial design and master planning in Canada and the United States. As the justice leader in Western Canada, Enzo provides expertise and support to Stantec Architecture across the country. He offers innovative and appropriate design solutions that address the functional needs and requirements of the owner, client, and user. He is currently working on the Youthlink Calgary Police Service Interpretive Centre, the Lethbridge Regional Police Service Headquarters Expansion, and the Edmonton Police Service Indoor and outdoor Gun Range/Training Centre.

PATTI WACHTENDORF  
Iowa Correctional Institution for Women

Wachtendorf is currently warden of the Iowa Correctional Institute for Women. She began her prison career in 1980 as a Correctional Officer at Stateville Correctional Center in Joliet, IL. She returned to Iowa in 1983 and was hired at the Iowa State Penitentiary in Ft Madison as a Correctional Officer. After servicing as Treatment Services Director, Security Director, and Deputy Warden, she was appointed Warden in 2009. Wachtendorf earned her Bachelor of Science Degree in Law Enforcement Administration/Public Administration in 1988 and her Master’s Degree in Law Enforcement Administration in 1993 from Western Illinois University. She also teaches online classes for Kaplan University.

RICHARD WENER, PHD  
Polytechnic School of Engineering  
of New York University

Richard Wener is Professor of Environmental Psychology and head of BS in Sustainable Urban Environments program in the Department of Technology, Culture and Society at the Polytechnic School of Engineering of New York University. For more than thirty years Professor Wener has studied the way correctional architecture affects facility operations and the behavior of staff and inmates, beginning with evaluations of the first of the “new generation jails,” federal Metropolitan Correctional Centers in Chicago and New York. He has since conducted evaluations of dozens of prisons and jails and several large nationwide surveys of correctional facilities. This research resulted in his 2012 book “The Environmental Psychology of Prisons and Jails.”

ROY C. WITHAM  
Richmond City Sheriff’s Office

Col. Roy Witham has held numerous supervisory roles since his appointment with the Richmond City Sheriff’s Office in 1997. His involvement with the new Richmond City Justice Center began with the initial planning study. As a member of the selection committee, he evaluated the conceptual designs submitted during the Design Build/PPEA competition. He was the Sheriff’s representative for the design phases and during construction. Col. Witham collaborated with City Administration in managing the project budgets, monitoring security systems installations, and verifying operational needs. In his current role as Chief of the Transition Team, Col. Witham is responsible for logistics, staff training and creating a culture of change.



C.T. WOODY, JR.  
Richmond City Sheriff's Office

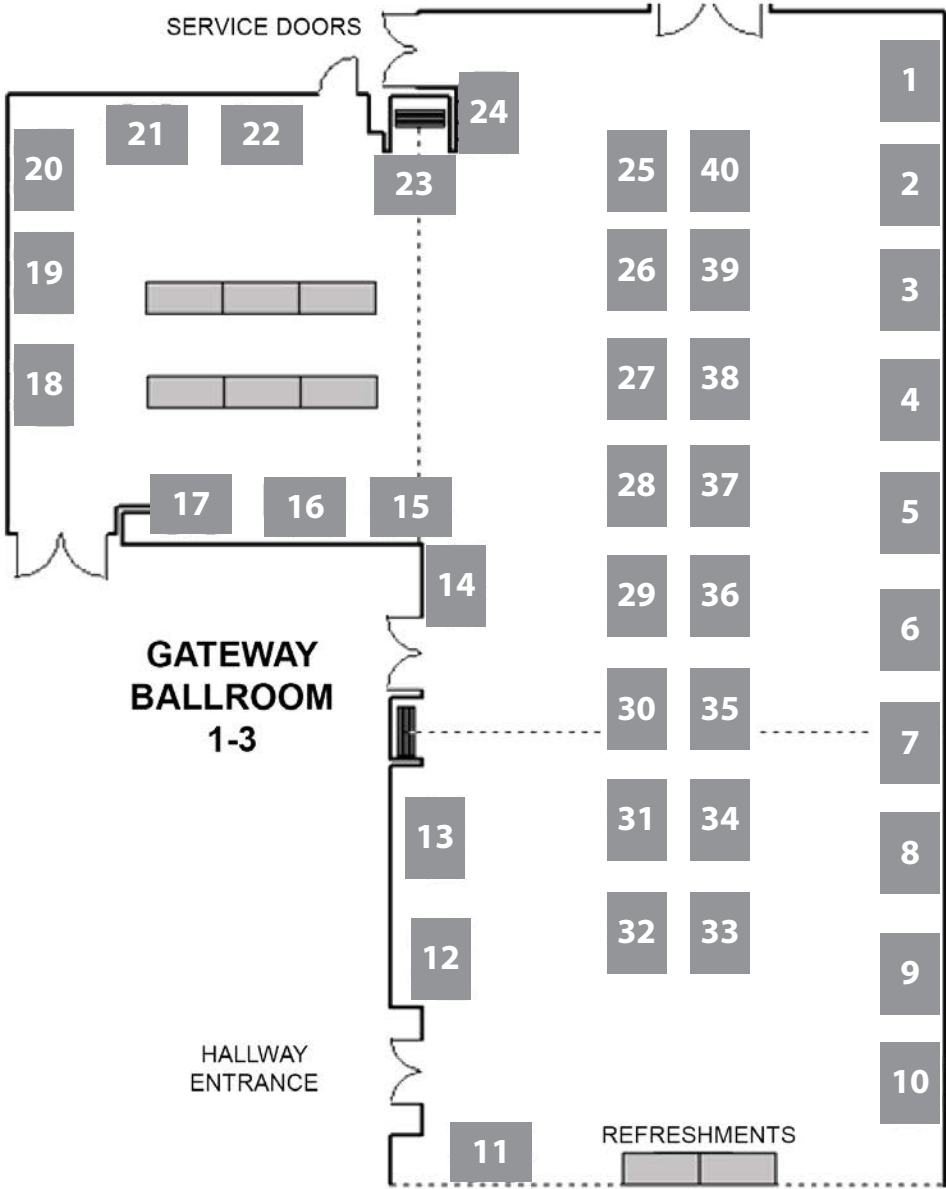
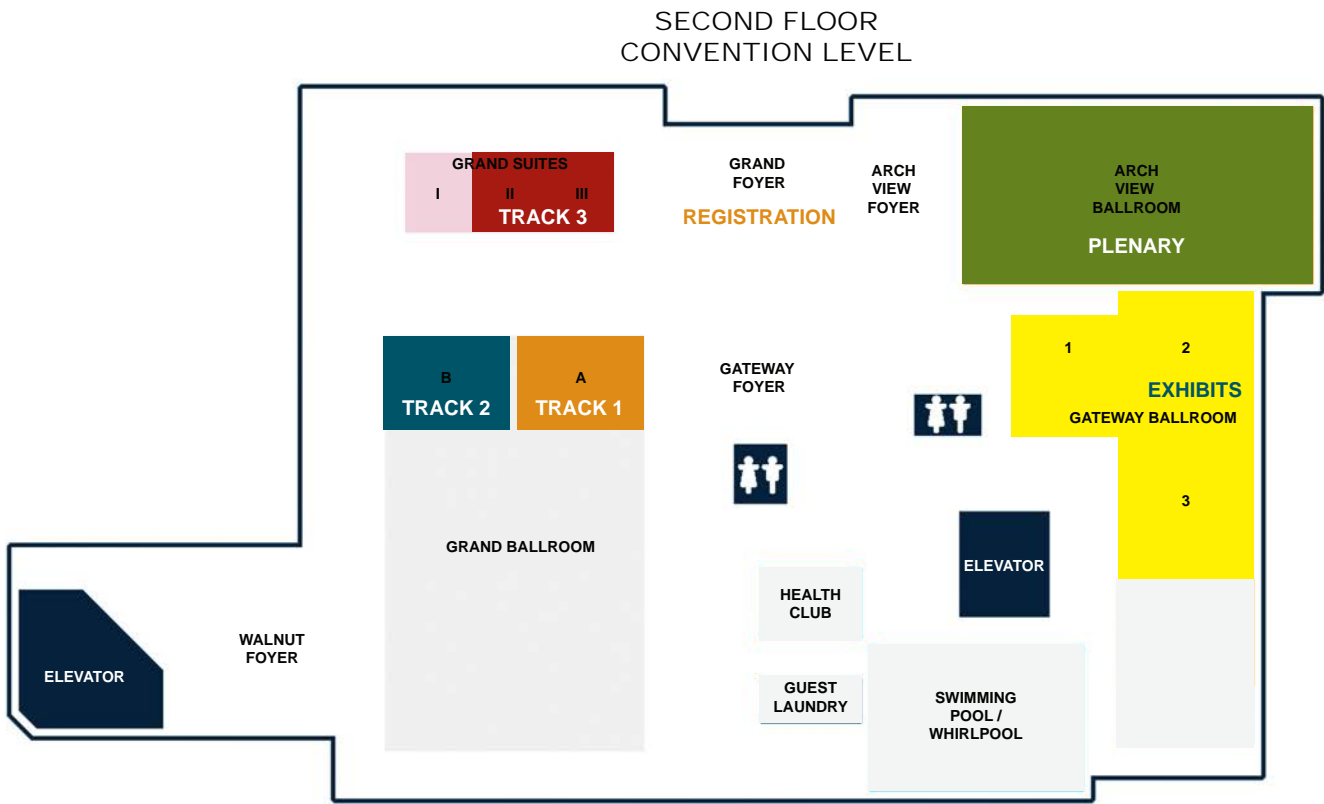
Sheriff C.T. Woody Jr. has remained committed to public service throughout his 46 year career as a law enforcement officer. He spent 23 years as a homicide investigator, five years as a narcotics investigator and five years leading the Community Intelligence Team while serving with the Richmond City Police Department. His experience includes time as a member of the SWAT Team and undercover assignments. Following his retirement from Police Department, the Sheriff spent four years as the Chief Investigator for the Richmond Commonwealth Attorney's Office. In 2006 he was elected Sheriff of the City of Richmond, the position he holds to this day.

TATHIANA WOOLERY  
Treanor Architects

Tathiana Woolery received her Bachelor of Architecture degree from the Rafael Landivar University in Guatemala. In 2007, she joined Treanor Architects. Tathiana specializes in design, building information modeling and project management. Her portfolio includes justice facilities in Kansas, Missouri and Nebraska, as well as other diverse projects which broaden her overall design capabilities. Tathiana is an associate member of AIA.

IVAN ZINGER, J.D., PH.D.  
Office of the Correctional Investigator

Dr. Ivan Zinger received his degree in Common Law from the University of Ottawa in 1992, and completed his articles of clerkship at the Federal Court of Canada. In 1999, he obtained his Ph.D. at Carleton University (Ottawa) in Psychology of Criminal Conduct. He is a Research Adjunct Professor with the Law Department at Carleton University. Dr. Zinger joined the Public Service of Canada in 1996. He held a variety of senior managerial, policy and research positions in public safety-related federal departments and agencies. In 2004, he joined his current employer, the Office of the Correctional Investigator (Federal Prison Ombudsman), and since January 2009, he is the Executive Director and General Counsel for that Office.



EXHIBITOR INFORMATION

ACORN ENGINEERING/  
ACORNVAC, INC.  
BOOTH #13

Members of Morris Group International  
15125 Proctor Avenue  
City of Industry, CA 91746  
www.acorneng.com / www.acornvac.com

custserv@acorneng.com / info@acornvac.com  
800-488-8999 / 800-591-9920

Acorn Engineering Company has been a leader in correctional fixtures and systems since 1954 with integrated plumbing solutions and stainless steel products that meet unique demands of correctional institutions. AcornVac vacuum plumbing systems save water, minimizes clogs, prevent the passing of contraband between cells, and allow better control of cell fixtures.

ACTALL CORPORATION  
BOOTH #23

2360 Lawrence St.  
Denver, CO 80205  
www.actall.net

Josh Childs, Director- Sales & Marketing  
jchilds@actall.com  
720-878-4223

Actall Corporation has been a leader in the manufacturing and deployment of wireless duress alarm systems since 1991. Actall's newest offering, PALS ATLAS, incorporates evolutionary upgrades to the proven PALS 9000 solution. PALS ATLAS introduces enhanced RF/RTLS technology and increased device options including smaller transmitter sizes and offender tracking capabilities.

ARCONAS  
BOOTH #11

5700 Keaton Crescent  
Mississauga, ON L5R 3H5 Canada  
www.arconas.com

Sherry Martin, Commercial Sales Manager  
smartin@arconas.com  
905-272-0727

Arconas is recognized around the world as a leading designer and manufacturer of exceptional furniture for high-traffic public spaces. We have developed significant expertise in providing the right seating solutions for courthouses, detention, correction, and enforcement facilities, commitment to excellence, safety, and environmental stewardship.

ARMORCORE BY WACO COMPOSITES  
BOOTH #24

P.O. Box 21223  
Waco, TX 76702  
www.armorcore.com

Justin Clark, Market Development  
jclark@armorcore.com  
866-688-3088

ArmorCore® bullet resistant fiberglass panels are the cost effective solution for designing bullet resistance into courtrooms, law enforcement and detention facilities, border patrol structures, and other projects. ArmorCore® is manufactured from components sourced in the USA, is shipped direct to jobsites within days of an order, and is easily installed by any GC or subcontractor. Waco Composites is an ISO Registered company and its quality ArmorCore® the preferred solution.

BASWA ACOUSTIC  
NORTH AMERICA, LLC  
BOOTH #30

3900 Ben Hur Avenue, Suite 10  
Willoughby, OH 44094  
www.baswaphon.com

Samuel V. Diaquila, Partner  
North American Sales Manager  
sam@baswaphon.com  
440-951-6022

BASWaphon Seamless Sound Absorbing Plaster. Premium finish with NRC ratings up to 1.00. Can be vaulted, curved or domed. Match any color. Completely field installed, eliminating incorrect pre-cut dimensions. Up to 95% recycled, no VOC's, USA made components, possibly provides points in 9 LEED categories. Custom finishes. Historical courtroom renovations.

C.E. SHEPHERD CO., LP  
BOOTH #4

2221 Canada Dry Street  
Houston, TX 77023  
www.ceshepheRoadcom

Kiran Jagad, Director of Sales  
KJagad@CEShepheRoadcom  
713-924-4300

C.E. Shepherd Co. is a leading manufacturer of a wide variety of highly engineered, Welded Wire Mesh and supplies including High Security Fencing Mesh such as MaxStop for various applications including Airports, Border Security, Chemical Plants, Correctional Facilities, Ports, Power Plants and other sensitive facilities. They are committed to providing highest quality products in a timely fashion without sacrificing customer service.

CCC GROUP, INC.  
BOOTH #8

5797 Dietrich Road  
San Antonio, TX 78219  
www.CCCGroupInc.com

Richard "Tripp" Ware III  
Business Development Analyst  
RWare@cccgroupinc.com  
210-662-4513

CCC Group's Detention Systems Division provides all engineering, procurement, project management and installation services required to integrate complete lines of physical and electronic security products in turnkey packages for new and existing correctional facilities.

CHIEF CORRECTIONAL PRODUCTS  
BOOTH #39

1808 Raymond Drive  
Grand Island, NE 68803  
www.customproducts.chiefind.com

Wayne Garrett, Sales Manager  
wayne.garrett@chiefind.com  
308-385-4670

Chief Correctional Products' five-plus decades of experience in metal fabrication assure optimum quality, strength and security throughout our full range of correctional products. We are a manufacturer of detention doors and frames; detention windows, detention furnishings, detention metal wall panels, detention ceilings, and detention steel cells.

CORNERSTONE DETENTION  
PRODUCTS/EO INTEGRATED  
SYSTEMS, INC.  
BOOTH #29

12700 31 Mile Road  
Washington, MI 48095  
www.cornerstonedetention.com

Jay Matthews, Senior Development Manager  
jmatthews@cornerstonedetention.com  
586-752-3200

Cornerstone Construction is the worldwide leader when it comes to furnishing and installing engineered detention products and services. We specialize in the design, manufacture, distribution and installation of institutional detention equipment and products. Our experience and products have made us the jail and prison industry choice at the international, federal, state, county, private and local levels.

CORTECH USA  
BOOTH #18

7530 Plaza Court  
Willowbrook, IL 60527  
www.cortechusa.com

Mike Hardiman, Sales Manager  
Mike@cortechUSA.com  
630-455-0811

Cortech USA manufactures heavy duty products for correctional, mental and behavioral healthcare facilities. All of our products help contribute to a healthy, humane, clean and safe environment for all residents and staff. All of our Cortech USA products are made in the USA.

DERBY INDUSTRIES  
BOOTH #19

24350 SR 23 South  
South Bend, IN 46614  
www.derbyindustries.com

Andy Karafa, President  
sales@derbyindustries.com  
866-233-4500

Derby proudly introduces Derby STEEL- a complete line of steel intensive use furniture for correctional and behavioral healthcare facilities. Bunks, benches with integrated cuff slots, desks, ADA compliant tables- we have them. Secure shower curtain systems, grab bars, security mirrors, pistol lockers, and more. We will meet your specific needs.

FIKE CORPORATION  
BOOTH #37

704 SW 10th Street  
Blue Springs, MO 64015  
www.fike.com

Don Padgett, Regional Sales Manager  
Don.Padgett@fike.com  
816-229-3405

Fike is a leader in the fire suppression, detection and alarm market with our clean agent suppression systems and intelligent releasing panels. Fike's fire alarm solutions include intelligent fire alarm panels with an integrated voice evacuation and messaging system for emergency communications and life safety. For more information, visit www.fike.com.

FSR, INC  
BOOTH #10

100 Marbleridge Road  
North Andover, MA 01845  
www.FSRinc.com

Jon Melchin, Director  
jmelchin@fsrinc.com  
978-501-6669

FSR is a New Jersey-based manufacturer of audiovisual integration products. They make floor boxes, table boxes, wall boxes and ceiling boxes for cable management solutions relating to audiovisual, presentation and IT technologies.

GLOBAL SECURITY GLAZING  
BOOTH #28

3451 Silver Hill Road  
Summerville, GA 30747  
www.security-glazing.com

Rick Trundt, Sales Manager  
rtrundt@security-glazing.com  
404-216-3787

Global Security Glazing, with over 60 years of experience in quality manufacturing, has emerged as the single source for all of your security and architectural glazing requirements. Offering a complete line of security products, including all-glass laminates, glass-clad polycarbonates and laminated polycarbonates, Global Security Glazing has the product and solution for all of your design challenges.

GRAHAM ARCHITECTURAL PRODUCTS  
BOOTH #7

1551 Mt. Rose Avenue  
York, PA 17403  
www.grahamwindows.com

Tom Haines, Mid-Atlantic Regional Manager  
thaines@grahamwindows.com  
717-849-8100

Leading architects trust Graham Architectural Products to help solve their most challenging design projects involving architectural windows, doors and curtain wall systems. No matter the environment, no matter the challenge, no one in the industry has more experience or is better able to create lasting solutions to the most confounding issues.

HABERSHAM METAL PRODUCTS  
COMPANY  
BOOTH #5

264 Stapleton Road  
Cornelia, GA 30531  
www.habershammetal.com

Ed Hann, Sales & Marketing Coordinator  
ed.henn@habershammetal.com  
706-778-2212

Habersham Metal Products Company has led the industry for over 60 years in the manufacturing of metal products, doors frames, and steel wall panels and ceilings. Our products are built to exacting standards so you can depend on the security performance of a Habersham product for the life of your facility.

HABTECH INC.  
BOOTH #26

6360 Vipond Drive  
Mississauga, ON L5T1A1 Canada  
www.habtech.ca

Don Connor, General Manager  
don.connor@habtech.ca  
905-612-8259

Habtech integrates door control, alarms, CCTV surveillance, lighting control, guard tour and intercom into a management system with flexible architecture which can mold to any correctional facility's specifications. After 20 years in the North American correctional market, Habtech has the necessary resources and experience to perform installations and retrofits of high-security detention systems that comply with strict correctional requirements.

HOPE'S WINDOWS, INC.  
BOOTH #32

P.O. Box 580  
Jamestown, NY 14702  
www.hopeswindows.com

Jed DuBois, National Sales Manager  
jed@hopeswindows.com  
716-665-5124 x309

Hope's® is the leading manufacturer of fixed and operable steel and stainless steel detention windows. Our product versatility in secure and non-secure windows and doors allows specifiers to benefit from "the turnkey solution" for all windows and doors. Stream-lined communication leads to savings in time, enhanced coordination and cost effectiveness while maintaining single source accountability.



EXHIBITOR INFORMATION

**INFAX INC.**  
**BOOTH #35**  
4250-D River Green Parkway, Suite D  
Duluth, GA 30096  
www.infax.com

Cecily Waters, Director of Marketing  
cwaters@infax.com  
678-533-4016

Infax, Inc. has provided real-time docket and key facility information to patrons for more than 15 years. It’s product line CourtSight, is an integrated digital signage solution for justice facilities that alleviates wayfinding confusion and helps patrons successfully navigate through the facility.

**LIFT-U DIVISION OF HOGAN MFG.**  
**BOOTH #1**  
P.O. Box 398  
Escalon, CA 95320  
www.lift-u.com

Don Birdsall, Director of Marketing  
donbirdsall@hoganmfg.com  
937-836-6900

LIFT-U Division of Hogan Mfg., Inc. produces a line of wheelchair lifts designed to solve accessibility problems that are unique to the Courtroom. To assist the Architect in protecting the decorum of the Courtroom, LIFT-U’s Courtroom Lifts are invisible when stationary, quiet, reliable and require no additional floor space.

**M/BED BLOCK SYSTEMS, LLC**  
**BOOTH #7**  
7508 Bull Run Drive  
St. Louis, MO 63123  
www.mbedblock.com

Gene Forster, COO  
info@mbedblock.com  
314-570-3008

M/Bed provides steel plates embedded into one or more faces of standard concrete masonry units (CMU) during manufacturing. The result is a permanent mounting area that can be installed by a mason right along with the rest of the wall, saving both construction time and money.

**MARATHON ENGINEERING CORPORATION**  
**BOOTH #36**  
5615 2nd St. W  
Lehigh Acres, FL 33971  
www.goldmedalsafetypadding.com

George Hrunka, President & CEO  
ghrunka@earthlink.net  
239-303-7378

Manufacturer and installer of Gold Medal Safety Padding that provides owners with safe, durable, and easily maintained padded environments. Our padding is specially formulated providing protection in jails, hospitals, schools, and where safety is needed.

**MIDWEST PORTLAND LLC**  
**BOOTH #3**  
105 Industrial Drive  
Minoka, IL 60447  
www.midwestportland.com

Ralph Iseman IV, Manager  
Ralph.Iseman@midwestportland.com  
815-521-4580

We design, engineer and manufacture high security detention equipment, hardware and controls based in Minooka, IL. Our staff has over 30 years of experience and we’re backed by our sister companies,

Elcon, Inc (electronic controls) and United Machine and Tool, LLC (CNC & Laser precision machine shop).

**MOSS & ASSOCIATES, LLC**  
**BOOTH #6**  
2101 N. Andrews Avenue  
Ft. Lauderdale, FL 33311  
www.mosscm.com

Greg Offner, Project Executive  
goffner@mossemail.com  
703-981-7099

Moss & Associates is a privately held construction firm headquartered in Fort Lauderdale, FL, with 10 additional offices throughout the United States. Moss provides full-service, program, project, construction management and owners representative services with a continual focus on the safety and security of staff, inmates, workers and the public at large. The company’s project experience includes a county facilities, jails, courts and law enforcement centers nationwide.

**NORIX GROUP, INC.**  
**BOOTH #25**  
1800 W. Hawthorne Lane, Suite N  
West Chicago, IL 60185  
www.norix.com

Sandy Heitman, Project Manager  
furniture@norix.com

Norix designs innovative, robust furniture that meets the real-world need for humanizing challenging environments. All furniture is designed for safety, security and extreme durability. Norix furniture is engineered to endure, surpassing industry standards for strength, safety and long-term performance. Norix offers a complete range of furniture for every correctional application.

**OLDCASTLE PRECAST MODULAR/ SECURITY BOOTH**  
**BOOTH #40**  
200 Keystone Drive  
Telford, PA 18969  
www.oldcastleprecast.com

John Eisenlau  
John.Eisenlau@oldcastle.com  
215-257-2255

Oldcastle Precast Modular designs, engineers, produces and erects precast concrete cells, shelters and components for the construction industry. As a leading manufacturer, we have provided over 60,000 precast correctional cells for local, state and federal projects. Our systematic approach is driven by quality, innovative solutions and your bottom line.

**PYROK, INC.**  
**BOOTH #12**  
121 Sunset Road  
Mamaroneck, NY 10543  
www.pyrokinc.com

Howie Podolsky, General Manager  
mrpyrok@aol.com  
914-777-7070

Pyrok Inc. manufactures Pyrok StarSilent, a smooth, seamless sound-absorbing plaster system for courthouses and Pyrok Acoustement acoustical plasters which have formulations for courthouse and correctional facility applications. Our new product, Vogl, is perforated sound-absorbing gypsum boards for courthouse and correctional facility uses.

**RR BRINK LOCKING SYSTEMS, INC.**  
**BOOTH #14**  
500 Earl Road  
Shorewood, IL 60404  
www.rrbrink.com

Gary Noha, Sales  
gnoha@rrbrink.com  
815-744-7000

R.R. Brink Locking Systems specializes in the design and manufacture of high security electromechanical and mechanical locks. We offer a full line of products designed for correctional institutions where remote control sliding cell operators and corridor doors are required. Our reputation has been established on product Innovation, quality, and workmanship.

**RW COMPANIES**  
**BOOTH #33**  
681 Harleyville Pike  
PO Box 429  
Lederach, PA 19450  
www.rwcompanies.com

J.J. Ramsey, Vice President  
jjramsey@therwcompanies.com  
Sarah Grayev, Marketing Manager  
sgrayev@therwcompanies.com  
215-256-7940

RW Companies provides housing, security electronics integration, detention equipment installation, and maintenance services for jails, prisons, juvenile facilities, courthouses, justice centers, embassies, and military bases. We pride ourselves on our expertise, buying power, and being a team you'll want to work with. We are one company with your total security solution.

**SAFTIFIRST**  
**BOOTH #17**

100 N. Hill Drive, Suite 12  
Brisbane, CA 94005  
www.safti.com

Diana San Diego, VP of Marketing  
DianaS@safti.com  
415.230.6756

SAFTI FIRST is a leading single-source, USA-manufacturer of advanced fire rated glass and framing systems for over 35 years. Our products are listed by UL and WHI can be customized to also protect against attack, impact, bullets, blast, hurricane and UV rays. Available in many custom architectural finishes and make-ups.

**SHERWOOD WINDOWS**  
**BOOTH #27**  
37 Iron Street  
Toronto ON M9W 5E3 Canada  
www.sherwoodwindows.com

Bryan Horton, Sales Manager  
bhorton@sherwoodwindows.com  
416-675-3262 x32

Since 1953 Sherwood Windows has been providing custom fenestration solutions for Institutional, commercial and Industrial facilities. Our wide range of products have been developed and enhanced through ongoing consultation with owners, architects, spec-writers, engineers and contractors. Sherwood products consistently meet or exceed the stringent testing standards demanded by today’s high performance building envelope systems to reduce energy consumption.

**STANLEY SECURITY**  
**BOOTH #2**  
14670 Cumberland Road  
Noblesville IN 46060  
www.stanleycorrectionalservices.com

Steve Baker, Sales Engineer  
steve.baker@sbdinc.com  
317-703-1165

Stanley Security has over 25 year of providing Security Electronic systems to the Justice market. We provide PLC-based door control, access control, video visitation, CCTV & IP Video, intercom and inmate tracking systems. Our array of innovative products and intelligent solutions give you total security solution from a single source.

**T.L. SHIELD + ASSOCIATES, INC.**  
**BOOTH #15**  
P.O. Box 6845  
Thousand Oaks, CA 91359  
www.tshield.com

Evelyn Southworth, Office Manager  
info@tlshield.com  
818-509-8228

T.L. Shield has developed the perfect accessibility lift for use where the aesthetic look is as important as superior lifting capabilities. Installed in courtrooms all across the country, the Invisible Lift could be the perfect solution for your project.

**THEATRE SOLUTIONS, INC.**  
**BOOTH #21**  
121 Park Avenue  
Quakertown, PA 18951  
www.theatresolutions.net

Mario C. Pimenta, Principal  
Sales and Marketing  
mcp@TheatreSolutions.net  
215-538-8033 x11

Theatre Solutions, Inc, is a supplier of high quality fixed seating for use in jury boxes as well as gallery areas of courtrooms. We offer many different chair models as well as the ability to create custom seating solutions for unique project requirements.

**THERMOMASS**  
**BOOTH #31**  
1000 Technolgy Drive  
Boone, IA 50036  
www.thermomass.com

Brad Nessel, VP of Sales  
bnesset@thermomass.com  
515-433-6075

At Thermomass, we’re passionate about high-performance walls. For more than thirty years we have helped our clients design and build concrete sandwich walls that exceeded their specifications for durability, energy-efficiency, and environmental responsibility. We learned long ago that the best projects are built on two cornerstones: superior products, and trusted partnerships.

**TYMETAL CORPORATION**  
**BOOTH #34**  
678 Wilbur Avenue  
Greenwich, NY 12834  
www.tymetal.com

Al Longhi, Sales Manager  
alonghi@tymetal.com  
800-328-4283

Tymetal Corp. is the leading manufacturer of security gates & operator systems. Correctional and Commercial systems include US DOS certified Crash Gates, aesthetic Crash Bollards, Bi-fold, Slide, Swing, Telescoping, Pedestrian, Vertical Lift/Pivot, Exercise Cages and Gate Operators. Shipping globally from manufacturing plants in TX, NY, and IA since 1985.

EXHIBITOR INFORMATION

VIKING PRODUCTS, INC.

BOOTH #16  
2238 N. Gassell, Suite J

Orange, CA 92865  
www.vikinggroupinc.com

Diane Bruining, Marketing  
diane@vikingfab.com  
714-881-3680

Our elite team designs and manufactures custom cell furniture, dayroom furniture, detention accessories to a complete line of detention furniture for use throughout your correctional facility. Led by owner and founder Mike Peterson, we continue to be the best in the industry for customer service, on time delivery and have the ability to provide products for any job, at any scope. We encourage you to contact us to inquire about other furniture, accessory, barrier, or locker items. Viking Products is perfect for your next job.

WALLACE INTERNATIONAL

BOOTH #38  
90 Lawson Crescent  
Winnipeg, MB R3P 2HB Canada  
www.wallaceintl.com

Stephanie Muller, Sales Manager  
smuller@wallaceintl.com  
866-300-1110

Wallace International’s automatic vehicle gates are designed to work as a unit to help control perimeter security, and will operate with existing access control systems. Wallace manufactures a variety of sliding, folding and pedestrian gates that are designed with speed, security and ease of installation in mind.

SPONSORS/PARTNERSHIPS

Thank you to our generous Platinum Partners:



Other Special Sponsors

NORR  
Hensel Phelps  
Gilbane Building Company  
McCarthy Construction

SEE YOU IN NEXT YEAR!  
NOVEMBER 18-21, 2015 IN MIAMI, FLORIDA



THE JFR AWARDS: LESSONS FROM THE STATE-OF-THE-ART  
THURSDAY, NOVEMBER 6, 2014, 7:00 PM (Ticketed Event)

The annual Justice Facilities Review awards presentation provides a unique opportunity for attendees to see a range of recent projects from around the country (and in some cases around the world), to reflect on design trends and to learn from outstanding examples of justice facility design. Attendees of the JFR awards presentation have expressed a desire to learn more about the projects that are being recognized in the program. Therefore, in this session, in addition to the presentation of the projects published in the 2014 JFR, the architects for the top projects—those that achieved a citation award and/or special jury recognition—will share with attendees in more depth the story behind the architecture. Those stories include extraordinary community impact, construction technology, sustainability, and architectural design.

LEARNING OBJECTIVES

- Learn emerging trends in justice facility design.
- Review a range of recent justice projects in the courthouse, law enforcement and detention/ corrections project typologies.
- Review the increasing focus on sustainability in justice solutions.
- Learn the special stories and strategies associated with citation award projects.

WHERE

City Museum  
750 N. 16th Street  
St. Louis, MO 63103

WHEN

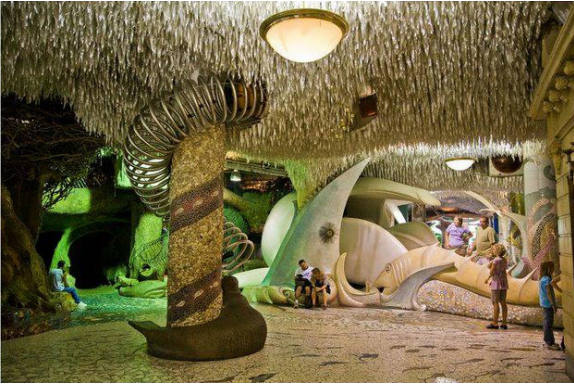
Weather permitting, attendees are encouraged to walk through the Citygarden to the City Museum. (approxiamtely 20 minutes) There will be one bus that will make two trips before and two trips at the end of the event.

6:00	AAJ Exhibitor Reception Ends at Hilton
6:15	Bus leaves hotel
6:30	Hors d'oeuvres and exploration of the museum
6:45	Bus leaves hotel
7:00	Gathering and buffet dinner
8:30	Program: Case Studies followed by All Citations and Published Projects Recognized
10:00	Program ends
10:10	Bus leaves museum
10:40	Bus leaves museum

ATTIRE:

Dress to play.

\*Attendees can earn 1 AIA LU.



SUSTAINABLE JUSTICE COMMITTEE WORKSHOP  
SATURDAY, NOVEMBER 8 | 8 AM-12:00 PM

An emerging focus in the sustainability movement is “design resiliency” as a reaction to numerous traumatic weather events that remind architects that no matter how energy-efficient a building is, it’s not sustainable if a 25-year flood puts it under water. At the AIA National Convention this year, a keynote session on resiliency emphasized the role of the architect, saying that architects can and should move to the front of the process into advocacy because we are the ones who can visualize change. Factors in resiliency bring to the fore many of the sustainable justice guidelines, developed by the AAJ’s Sustainable Justice Committee in terms of how social cohesion, individual health, community design, and building design all contribute to sustainability. Police are first responders, and jails and prisons are often stand-alone facilities- what does all that mean for communities in a disaster? To further explore sustainability and resiliency and its implications for justice, this workshop will include presentation/dialog with Mary Ann Lazarus, the AIA’s Resident Fellow for Sustainability, and breakout sessions for further exploration with workshop participants.

We are looking forward to expanded involvement at this year’s workshop with new participants! Join us for coffee and snacks while we explore the advancement and application of Sustainable Justice principles. Discussion topics include a special presentation of the LAPD Metropolitan Division Facility Case Study, and grant-funded videos featuring case studies and water harvesting technology. Also, we will be Planning out the committee’s goals for 2015.

WHERE

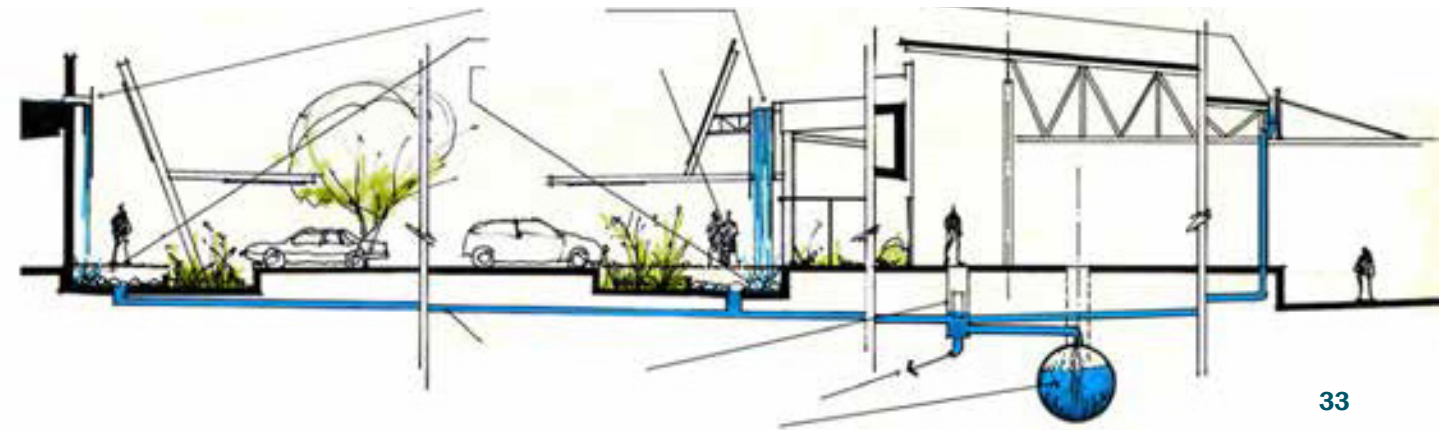
HOK St. Louis  
211 N. Broadway, Suite 700  
St. Louis, MO 63102

WHEN

8:00 AM - 8:15 AM	Gather/Breakfast
8:15 AM - 8:30 AM	Welcome & Introductions
8:30 AM - 8:45 AM	AAJ Sustainable Justice Committee Updates
8:45 AM - 9:30 AM	Sustainable Justice Video Previews
	Presentation of LAPD Metropolitan Division Facilities Review
9:30 AM - 10:15 AM	Sustainability and Design Resiliency in Justice
	Presentation & Discussion led by Mary Ann Lazarus,
	AIA Sustainability Fellow in Residence
10:15 AM - 10:30 AM	Breakout Group Discussion
10:30 AM - 11:15 AM	Breakout Group Work
11:15 AM - 11:30 AM	Report Out
11:30 AM - 12:00 PM	Next Steps / Wrap Up

\* 3 CEU LU / HSW Available

Special thanks to:  
HOK for hosting the event and their organizational help  
Dwight Mitsunaga for refreshments





# EXPERIENCE ST. LOUIS



## ST. LOUIS LAMBERT AIRPORT

Lambert–St. Louis International Airport is an international airport serving Greater St. Louis, Missouri. It is about 10 miles northwest of downtown St. Louis and is the largest and busiest airport in the state with 255 daily departures to about 90 domestic and international locations.

## TRANSPORTATION

**METROLINK**  
You can take the MetroLink directly from the airport to downtown St. Louis. The Downtown Hilton is located 4 blocks East of the 8th & Pine station and 4 blocks South-East of the Convention Center station. On weekdays, trains usually run every seven minutes during peak hours and every 15-20 minutes on weeknights.

Cost: \$4.00 (from Lambert Airport)  
Travel Time: Approx. 45 minutes

Additional information at [www.metrostlouis.org](http://www.metrostlouis.org)

**TAXI/SHUTTLES**  
The fare from the airport to downtown St. Louis is around \$35, with airport shuttles charging \$15 one way, \$25 for round trip. Various limousine and car services are available as well, along with a number of local companies offering some rather unique modes of group transportation.

Local Taxi Companies:  
ABC and Checker Cab – 314.725.2111  
County Cab Company, Inc., St. Louis – 314.993.8294  
Yellow Cab of St. Louis – 314.993.8294  
Laclede Cab Co. – 314.535.1162

**CAR RENTAL**  
For those who prefer to drive themselves, there are a number of national car rental agencies located at Lambert-St. Louis International Airport and throughout the area. Whether you need a car, van or small truck, it's easy to find the right set of wheels in a location near your hotel or event venue.

## PARKING AT THE HILTON

Self parking: \$20.00 (Garage Parking)  
Valet parking: \$27.00 (Valet Parking)  
In/Out Privileges Not Available

## NEARBY ATTRACTIONS

01. Hilton at the Ballpark
02. Ballpark Village
03. Busch Stadium
04. City Garden
05. City Hall
06. City Museum
07. Edward Jones Dome
08. Gateway Arch Museum and Visitor Center
09. HOK STL Office / Met Square
10. Kiener Plaza
11. Laclede's Landing
12. Lumiere Place Casino
13. Old Cathedral
14. Old Courthouse
15. Old Post Office
16. Peabody Opera House
17. Scottrade Center
18. Soldier's Memorial
19. St. Louis Public Library
20. St. Louis Union Station
21. Wainwright Building

## ADDITIONAL RESOURCES

Explore St. Louis | [www.explorestlouis.com](http://www.explorestlouis.com)  
The Gateway Arch | [www.gatewayarch.com](http://www.gatewayarch.com)  
Forest Park Info and Events | [www.forestparkforever.org](http://www.forestparkforever.org)  
Ballpark Village | [www.stlballparkvillage.com](http://www.stlballparkvillage.com)  
Anheuser-Busch Brewery Tours | [www.budweisertours.com](http://www.budweisertours.com)  
Soulard | [www.soulard.org](http://www.soulard.org)  
Lafayette Square | [www.lafayettesquare.org](http://www.lafayettesquare.org)  
The Hill St. Louis | [www.hill2000.org](http://www.hill2000.org)





