

# Academy of Architecture for Health On-line Professional Development

## Scripps Barbey Family Emergency and Trauma Center A Partnership in Design for the Future

### Case Study Series

September 19, 2017

2:00 pm – 3:00 pm ET

1:00 pm – 2:00 pm CT

12:00 am – 1:00 pm MT

11:00 am – 12:00 pm PT

### Presenters

Alicia Wachtel, LEED® GA, HOK

Peter Grandine, HOK

Hunvey Chen, AIA, DBIA, LEED® AP BD+C, HOK

Kimberlee Roberts, MPH, FACHE, Scripps Memorial Hospital

### Moderator

Stacy Robben, FSMPS, LEED® AP BD+C

McCarthy Building Companies, Inc.

# Academy of Architecture for Health On-line Professional Development

## Scripps Barbey Family Emergency and Trauma Center A Partnership in Design for the Future

### Case Study Series

September 19, 2017

2:00 pm – 3:00 pm ET

1:00 pm – 2:00 pm CT

12:00 am – 1:00 pm MT

11:00 am – 12:00 pm PT

### Presenters

Alicia Wachtel, LEED® GA, HOK

Peter Grandine, HOK

Hunvey Chen, AIA, DBIA, LEED® AP BD+C, HOK

Kimberlee Roberts, MPH, FACHE, Scripps Memorial Hospital

### Moderator

Stacy Robben, FSMPS, LEED® AP BD+C

McCarthy Building Companies, Inc.

# Case Study Series

The Academy's multi-channel on-line approach provides emerging professionals, journeymen, and master professionals with convenient and economical opportunities to develop their chosen area of interest.

Case Study Series sessions are tailored to provide healthcare design professionals with examination of the why and how of award-winning designs.

# Copyright Materials

This presentation is protected by US and International Copyright laws. Reproduction, distribution, display and use of the presentation without written permission of the speaker is prohibited.

©2017 The American Institute of Architects

# Compliance Statement

“AIA Knowledge” is a Registered Provider with The American Institute of Architects Continuing Education Systems (AIA/CES). Credit(s) earned on completion of this program will be reported to AIA/CES for AIA members. Certificates of Completion for both AIA members and non-AIA members are available upon special request.

This program is registered with AIA/CES for continuing professional education. As such, it does not include content that may be deemed or construed to be an approval or endorsement by the AIA of any material of construction or any method or manner of handling, using, distributing, or dealing in any material or product.

# AIA/CES Reporting Details



All attendees will be eligible to receive:  
1 AIA LU/HSW (AIA continuing education)

In order to receive credit, each attendee must complete the webinar survey/report form **at the conclusion of the presentation.**

Follow the link provided:

- **in the Chat box** at the conclusion of the live presentation;
- **in the follow-up email** you (*or the person who registered your site*) will receive one hour after the webinar.

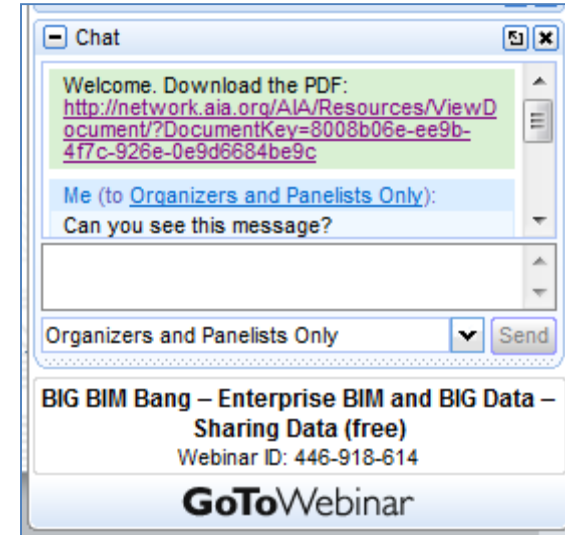
# Questions?

Submit a question to the moderator via the chat box.



Content-related questions will be answered during the Q&A portion at the end as time allows.

Tech support questions will be answered by AIA staff promptly.



# Presenter Content

The AIA Knowledge Community provides this webinar to share knowledge with its members and other attendees. The AIA Knowledge Community and Academy of Architecture for Health own and take responsibility for material presented on slides bearing the AIA trademark.

All other information, opinions and graphic material contained in this presentation was assembled without compensation – by the Presenter.

Enjoy!



# Scripps Barbey Family Emergency and Trauma Center

## A Partnership in Design for the Future

### Presenters



**Alicia Wachtel, LEED® GA**  
Regional Healthcare Practice Leader  
HOK



**Hunvey Chen, AIA, DBIA, LEED® AP BD+C**  
Senior Project Architect  
HOK



**Peter Grandine**  
Senior Medical Planner  
HOK

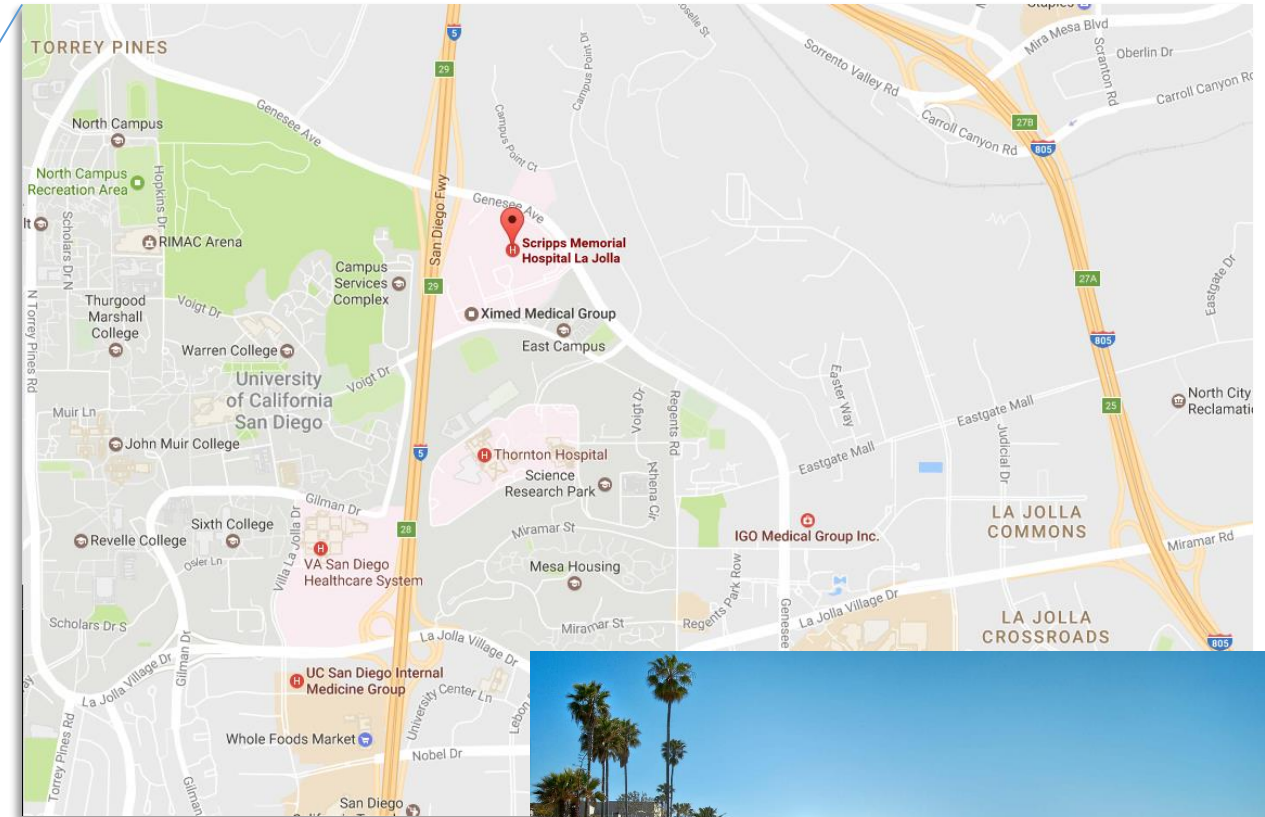
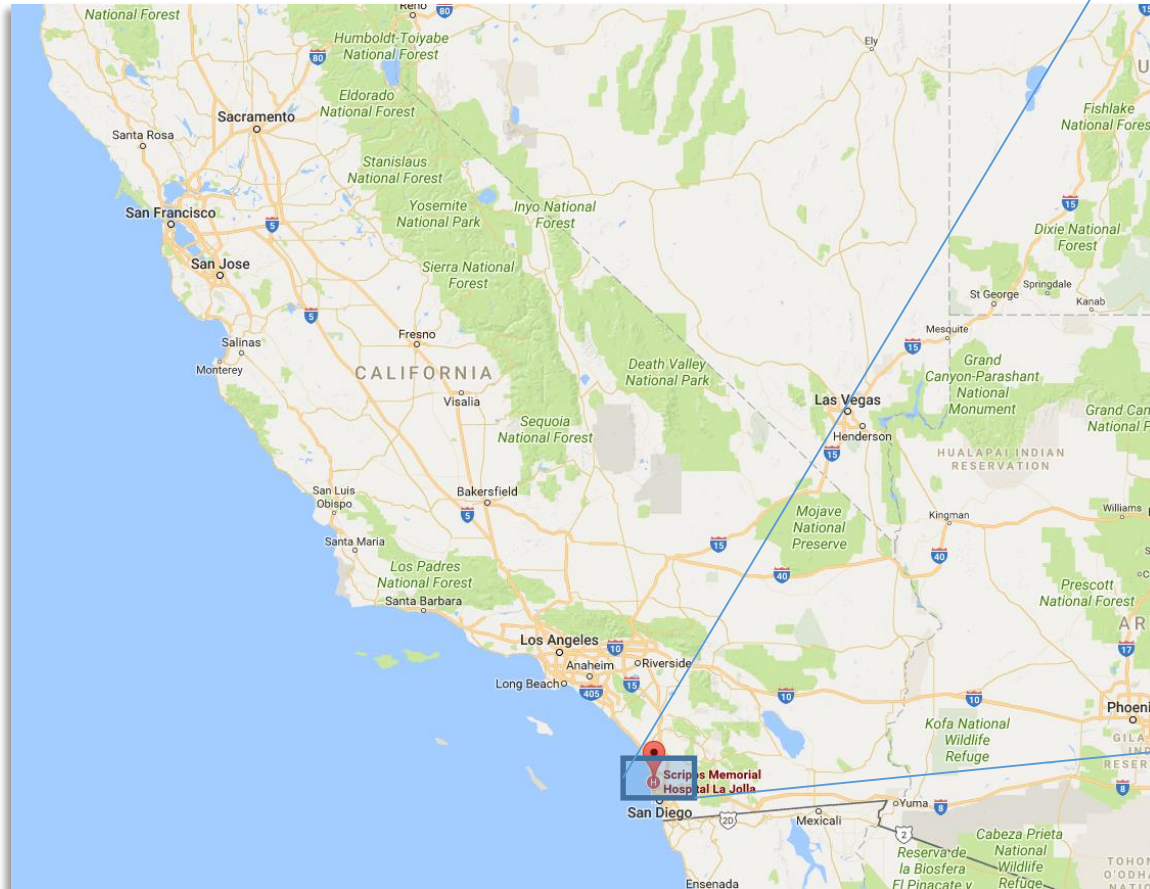


**Kimberlee Roberts, MPH, FACHE**  
Senior Director, Clinical Services  
Scripps Memorial Hospital

# The Learning Objectives

- Identify how an integrated project team established the success of the emergency department project before it even began.
- Understand how a collaborative design process from the visioning session through construction allowed for flexibility in design and consideration for future growth.
- Understand how emergency department drivers unique to this health system facility were identified and met.
- Learn how the facility shifted their operational mindset which inspired the planning and design for the new emergency department.

# The Location



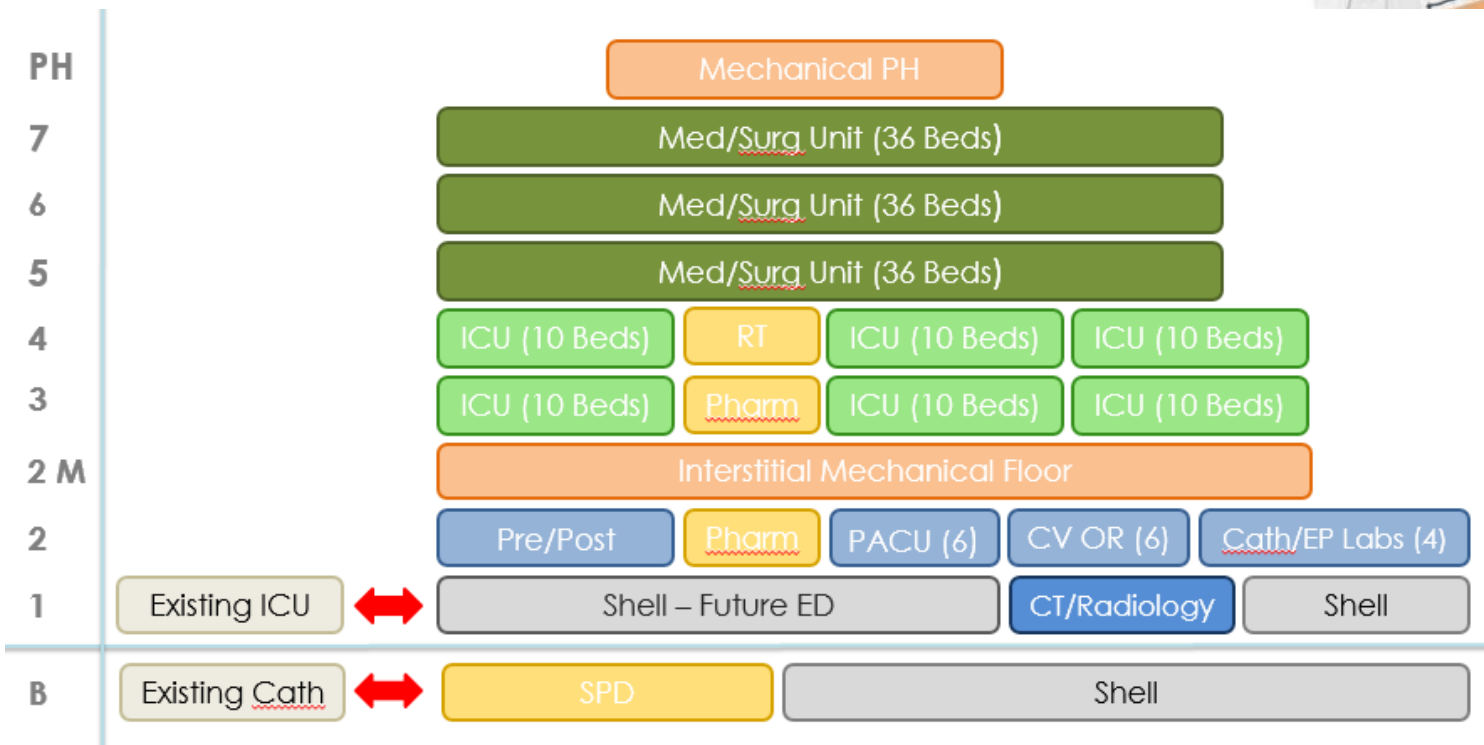
Scripps Memorial  
Hospital La Jolla  
San Diego, California





# The Context

Initial program indicated location of the ED at Level 1 of Scripps Prebys Cardiovascular Institute (SPCI), with connection to future Phase 2 and future Trauma.



SPCI

# The History

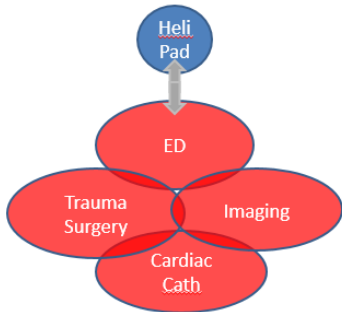
Distance and adjacencies were studied in relation to Trauma, Helipad and Imaging

## Problem Statement

### Best ED Location

#### ➤ Minimize Distance to Vital Services

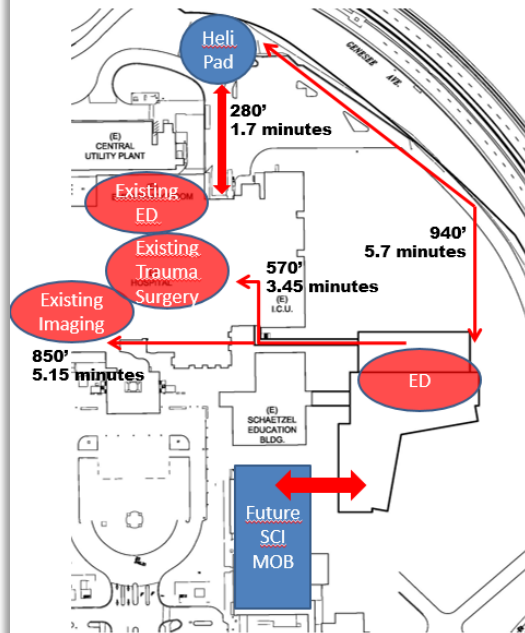
- Helipad to ED
- ED to Trauma Surgery
- ED to Radiology (Imaging)



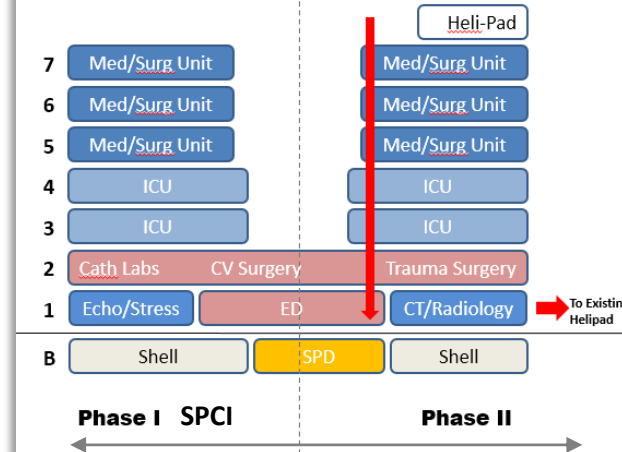
#### Programmed

- ED footprint in Phase I is not conducive to the Ideal Layout at the end of Phase II and Phase III

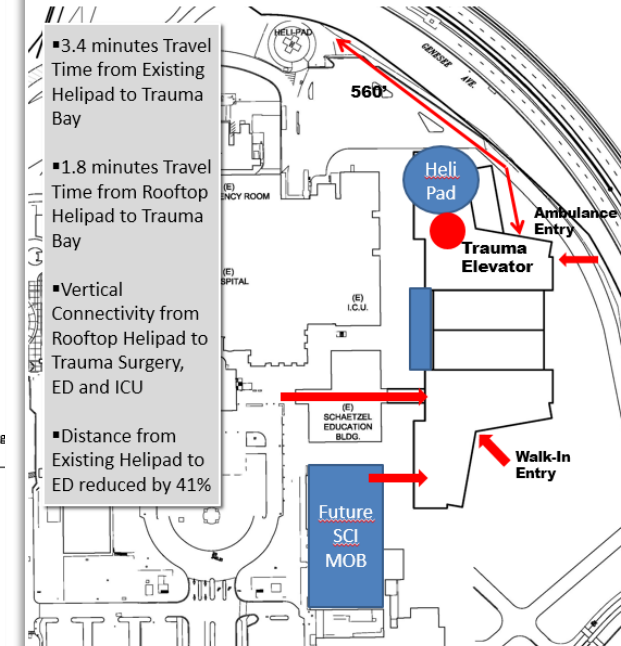
## Phase I Site Plan – as Programmed



## Stacking Diagram – Phase I and Phase II



## Phase II Site Plan – Proposed



# The Numbers

- Current Annual Volume = 39,000
- Target Annual Volume = 40,000 – 45,000
- ESI Category Mix = 1-5
- Existing ED = 5,000 SF
- New ED = 36,000 SF





# Existing Emergency Department

Trauma Bay



Treatment Bay



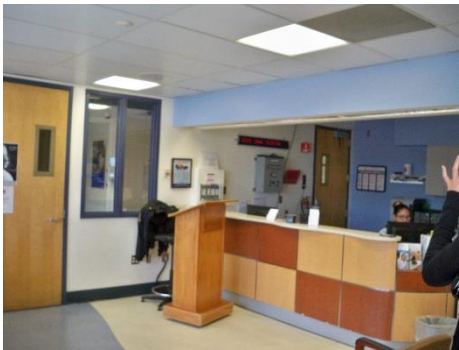
Nursing Station



Rapid Treatment Bay



Quick Look

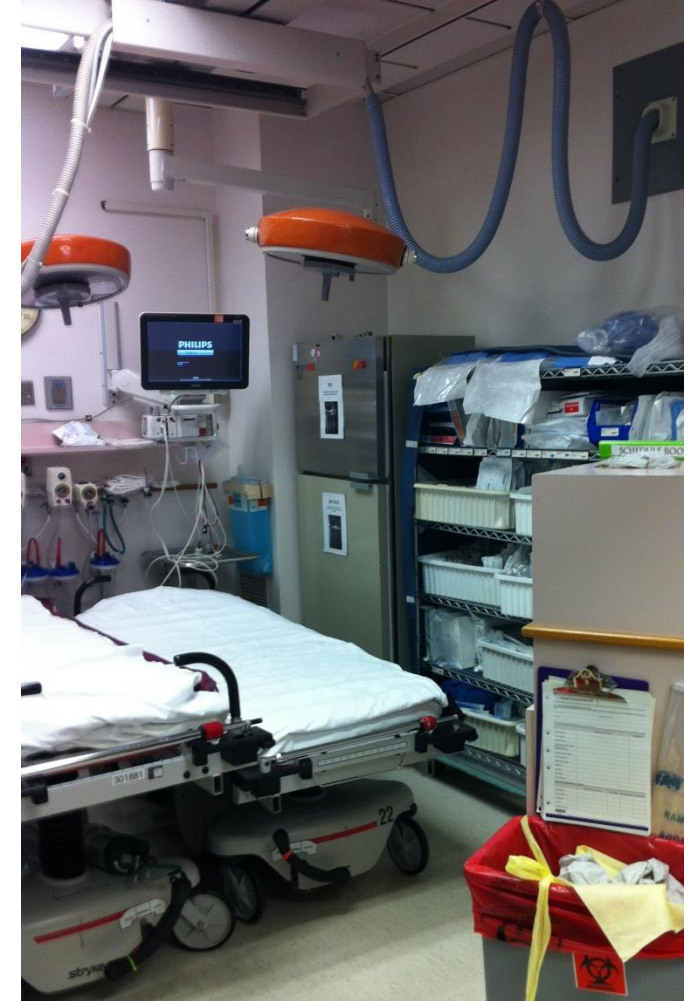


ED Corridor



# The Scope

- Replacement Emergency Department
- Check In / Quick Look
- 11 Rapid Treatment Bays (3 closed, 8 open)
- 18 ED Exam Rooms
- 18 Clinical Decision Unit Exam Rooms / Overflow
- 4 Trauma Bays – expandable to 8
- Adjacent Imaging – MRI, CT, X-Ray, Ultrasound
- Flexible planning for expansion to future Tower 2





# The Process – Working Together

*Speling Doesn't Kount*

**Misery is optional**

**Leave titles at the door**

**Technology on vibrate**

**One speaker at a time**

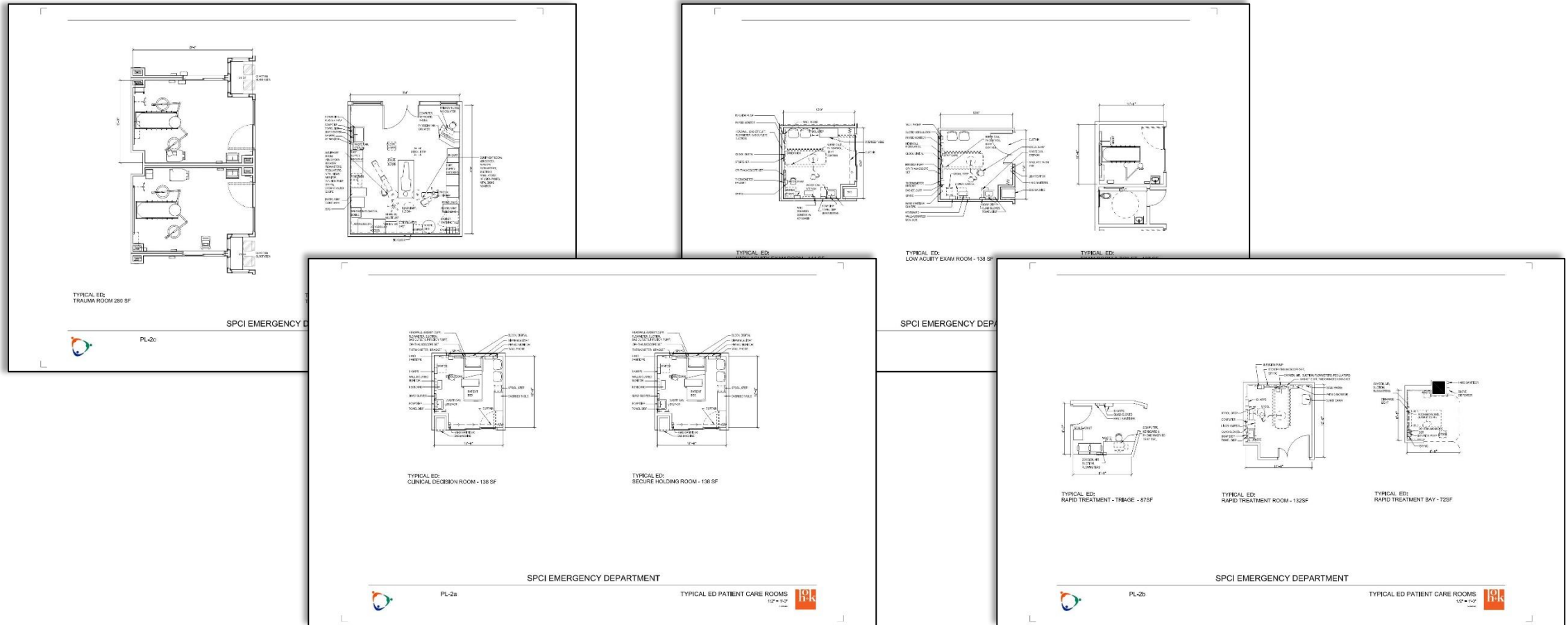
**Everyone participates**



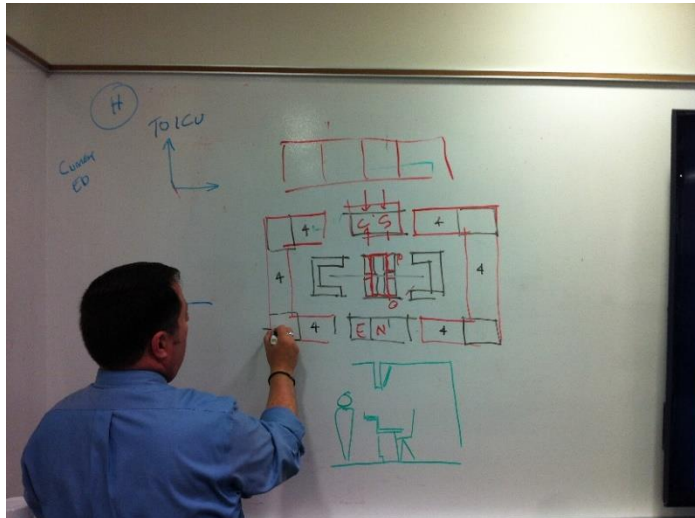
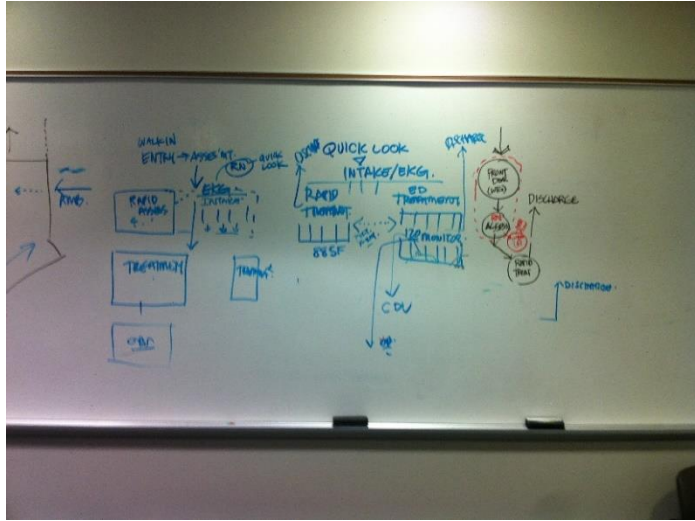
**No ideas are bad ideas**

start on time, end on time

# The Process – Coming Prepared



# The Process – *No idea is a bad idea*





# The Drivers

- Fast thru-put is a priority (90 minutes or less)
- Design for orientation and flow
- Maximize number of beds with the correct staffing ratios
- Enhance physician communication
- Staff and physician security
- Connection to future Phase 2 Tower
- Visibility throughout the entire department
- Connection between Emergent Care, Rapid Treatment and Trauma
- Quick access from Trauma to Imaging
- Imaging must also be shared with the Bed Tower.



# The Emergency Department Layout



# Fast Thru-put

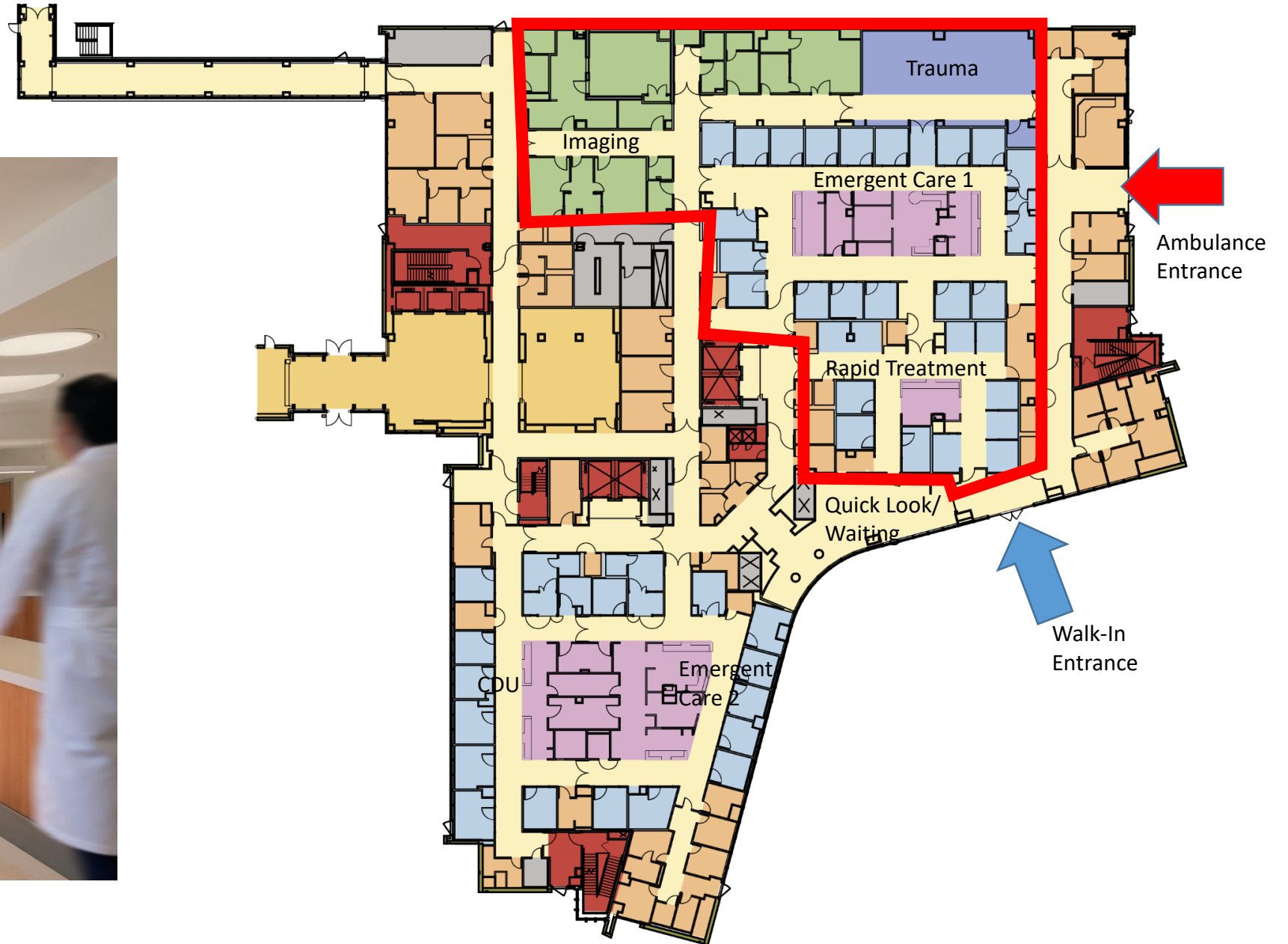




# Design For Orientation and Flow

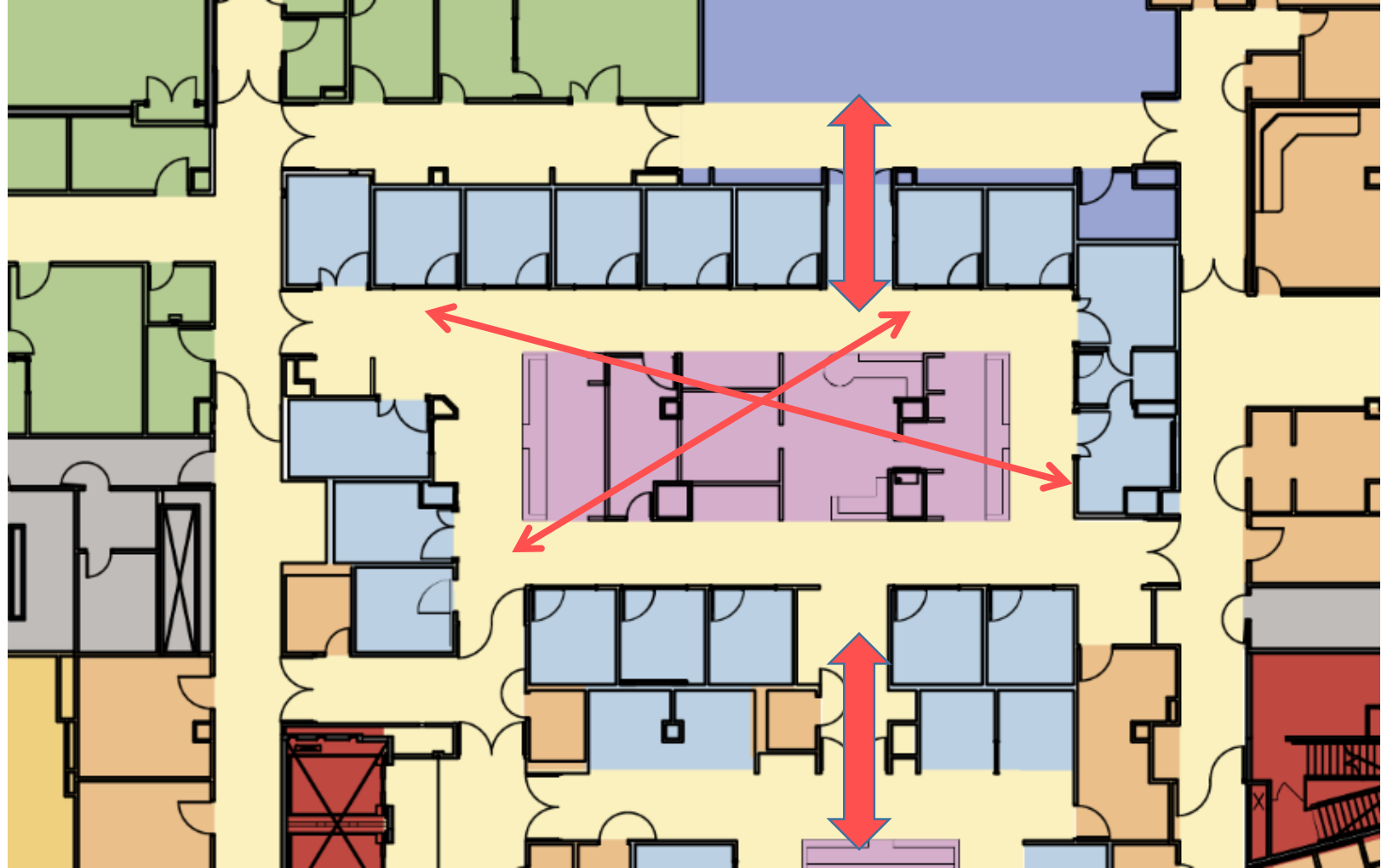


# Security



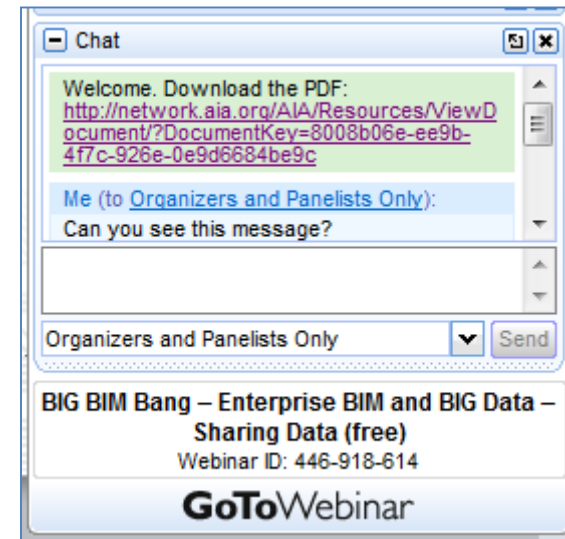


# Communication and Visibility



# Upcoming Break for Questions and Comments

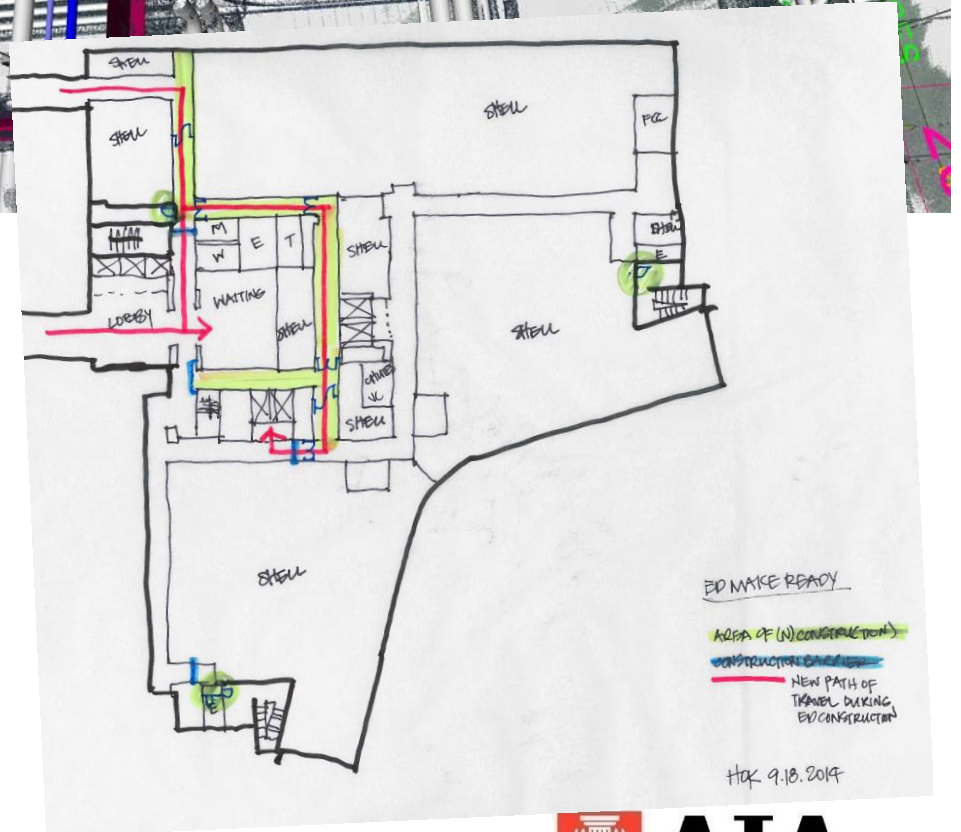
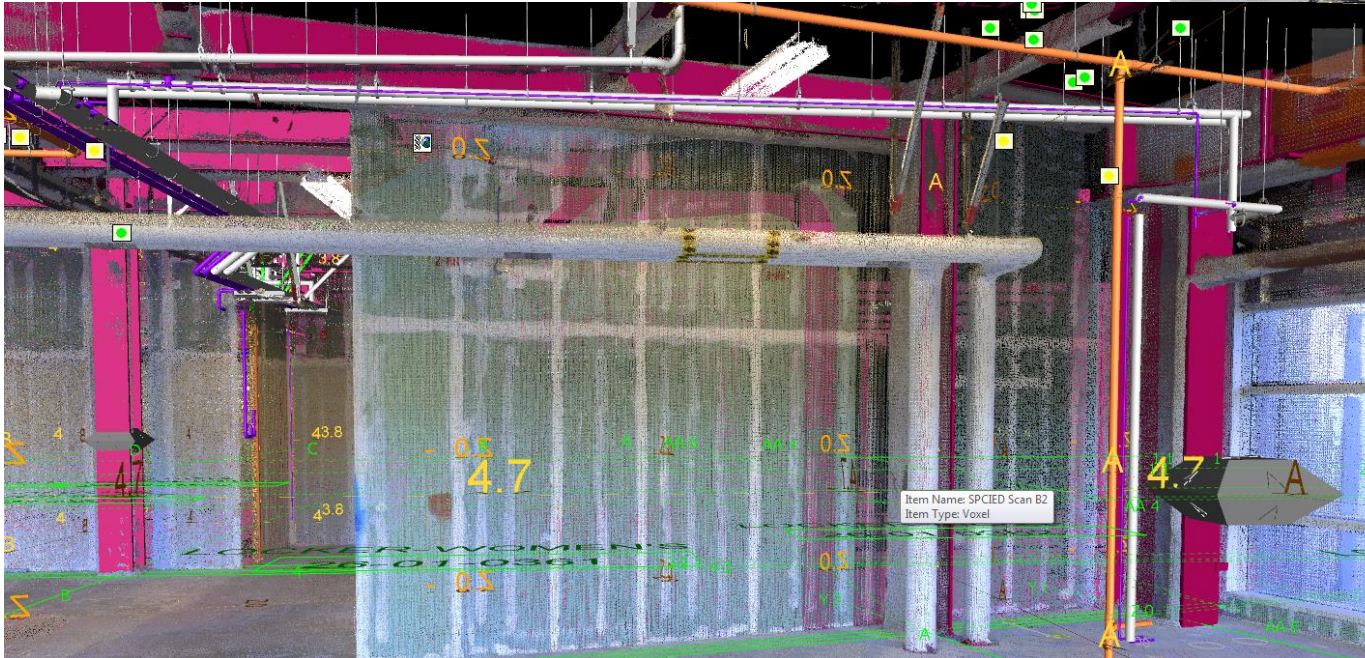
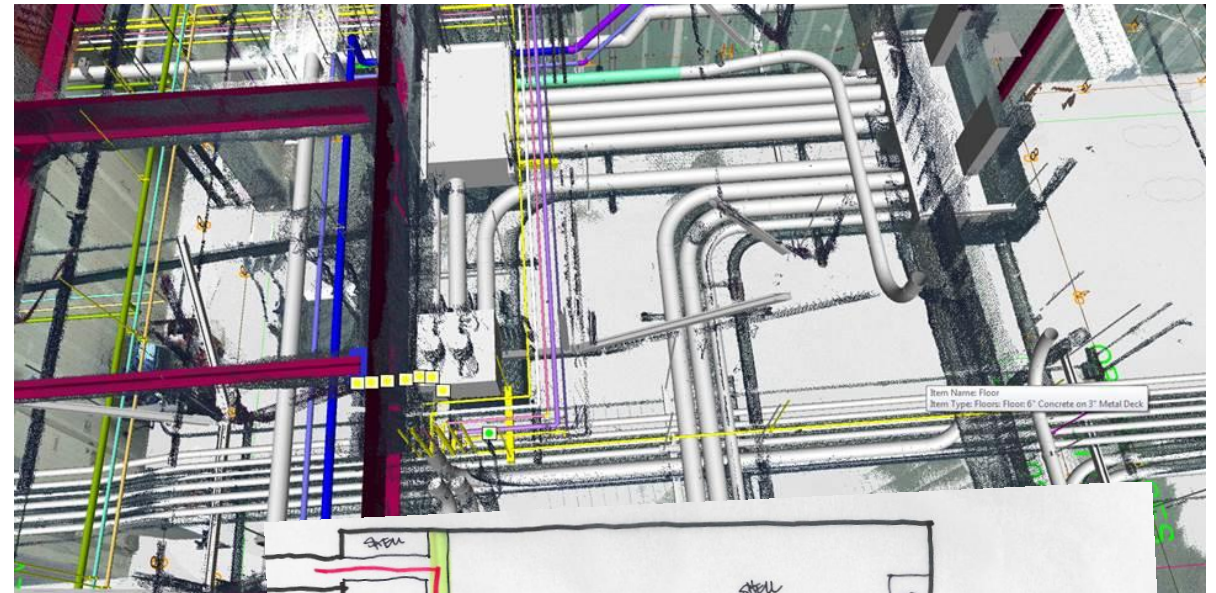
Submit a question to the moderator via the chat box.



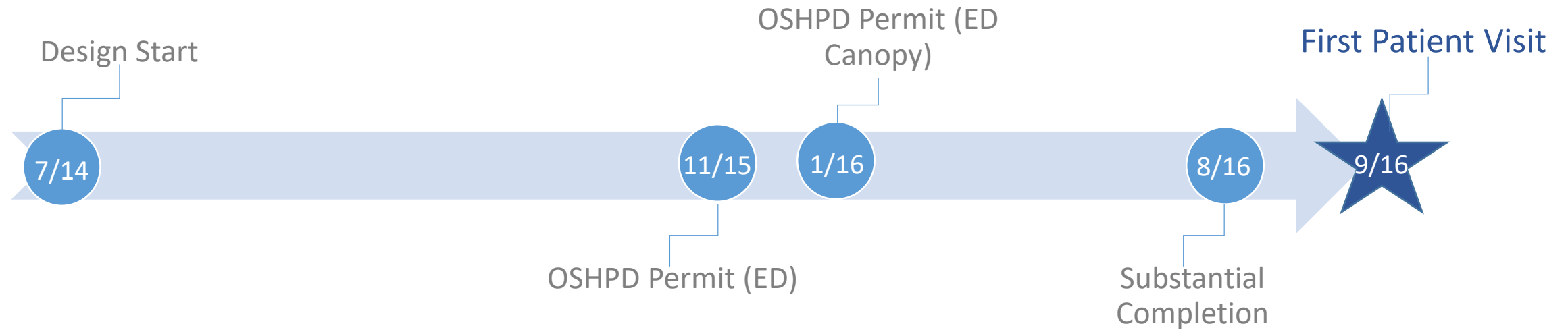


# The Delivery

- Design-Build Team
- All trades on board by DD
- Weekly model exchange and coordination during design and early construction using Navisworks
- Laser Scan of shelled space viewable in Recap



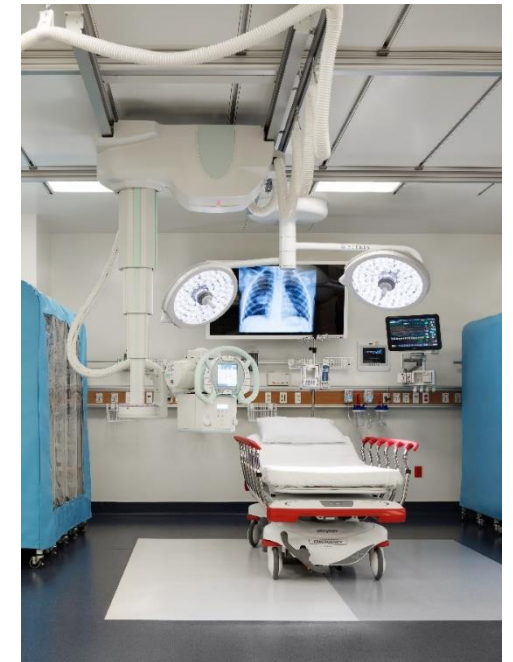
# The Schedule



- 4 OSHPD Packages
  - ED Make Ready
  - ED Demo
  - ED Canopy
  - ED



# The Results





















# Time for Questions and Comments



## **Moderator**

**Stacy Robben**

**McCarthy Building Companies, Inc.**

# CES Credit

All attendees are eligible to receive: 1.0 HSW/CEU (AIA continuing education)

Attendees at your site can submit for credit by individually completing the webinar's survey and report form. **The survey closes Friday, September 22, 2017 at 12:30 am EDT.**

The URL to the webinar survey/form <https://www.research.net/r/AAH1708> will be emailed to the person who registered your site.

More continuing education questions? Email . . .  
[knowledgecommunities@aia.org](mailto:knowledgecommunities@aia.org).

# Join us at The Academy of Architecture for Health!

- **Receive Academy Update newsletters**
- **Access to resources**
  - ✓ Knowledge Repository
  - ✓ Webinars
  - ✓ Award programs
  - ✓ Scholarships, Fellowships
  - ✓ Emerging professionals benefits
  - ✓ National and regional conferences and events
  - ✓ Social media, publications, blogs and Twitter

To join us or update your account go to . . .

**www.aia.org/aah**



AIA Academy of Architecture for Health

[Webinar Resources](#) | [2016 Healthcare Design Awards](#) | [Member List](#) | [BRIK Knowledgebase](#)  

## AIA Academy of Architecture for Health

The AAH mission is to improve both the quality of healthcare design and the design of healthy communities by developing, documenting and disseminating knowledge; educating design practitioners and other related constituencies; advancing the practice of architecture; and affiliating and advocating with others that share these priorities.

**Meet the Board >**

**Congratulations to the 2016 AIA/AAH  
Healthcare Design Award recipients!**

**▶ JOIN this Knowledge Community**

**Click here**

**AIA Knowledge Community**  
Academy of Architecture for Health





# Upcoming Webinars\*

Date	Series	Topic
10/10	HC 101 Series	LEAN Concepts Drive Healthcare Architecture Planning and Design
11/7	Master Studio Series	Generative Design for Healthcare Planning
12/12	HC 101 Series	Trends in Medical Planning, Part 1: Following the Thread

\*Dates and topics are subject to change

Visit [www.aia.org/aah](http://www.aia.org/aah) for more information and to register.