

Westlake Dermatology Concrete and Glass Pavilion

Marble Falls, Texas



SQ FT
3,117 BGSF



OWNER/AFFILIATION
Westlake
Dermatology



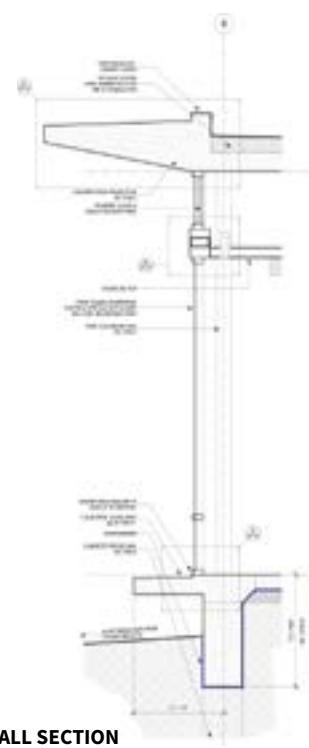
ARCHITECT(S)
Matt Fajkus
Architecture



COMPLETION DATE
2017



SOUTHERN VIEW AT DUSK



WALL SECTION



SITE MAP

DESIGN INTENTIONS

Situated to overlook gentle hills to the southwest, the new medical building is intentionally subtle, minimizing the visual presence of the new construction. The nuanced concrete and glass shell merges with the designed landscape architecture, enveloping the comfortable, bright, and open interior in calm and quiet **as one transitions from the road, through a garden zone,** and into the space overlooking the Texas Hill Country.



PARKING AND DROP-OFF



SOUTHERN VIEW AT DUSK