

# Detention Architecture for Adult and Juvenile Mental Health in California-Case Studies

# Copyright Notice

This presentation is protected by US and International Copyright laws. Reproduction, distribution, display and use of the presentation without written permission of the speaker is prohibited.

© The American Institute of Architects 2018



# AIA/CES Compliance Statement

“AIA Knowledge” is a Registered Provider with The American Institute of Architects Continuing Education Systems (AIA/CES). Credit(s) earned on completion of this program will be reported to AIA/CES for AIA members. Certificates of Completion for both AIA members and non-AIA members are available upon request.

This program is registered with AIA/CES for continuing professional education. As such, it does not include content that may be deemed or construed to be an approval or endorsement by the AIA of any material of construction or any method or manner of handling, using, distributing, or dealing in any material or product.

Questions related to specific materials, methods, and services will be addressed at the conclusion of this presentation.

# AIA/CES Compliance Statement

“AIA Knowledge” is a Registered Provider with The American Institute of Architects Continuing Education Systems (AIA/CES). Credit(s) earned on completion of this program will be reported to AIA/CES for AIA members. Certificates of Completion for both AIA members and non-AIA members are available upon request.

This program is registered with AIA/CES for continuing professional education. As such, it does not include content that may be deemed or construed to be an approval or endorsement by the AIA of any material of construction or any method or manner of handling, using, distributing, or dealing in any material or product.

Questions related to specific materials, methods, and services will be addressed at the conclusion of this presentation.



# AIA/CES Reporting Details

All attendees will be eligible to receive AIA continuing education for attending this course by completing the electronic form sent via email after the conference.

Continuing education questions can be directed to [aaj@aia.org](mailto:aaj@aia.org).

# Course Description

The California Legislature has found that the current challenges in managing adult and juvenile jail populations requires improved housing with an emphasis on expanded program and treatment space as an investment in public safety.

A cross-disciplinary team of experts will discuss model case studies from current architectural projects in detention facilities in California funded by SB1022, SB863 and AB900 – for improved facilities and program services in Adult and Juvenile Mental Health.



# Learning Objectives

1. Applying principles of design excellence to secure justice facility design and expanding what is possible in detention.
2. Advancing improvements in building security for humane delivery of mental health treatment in secure settings.
3. Providing effective systems for assessing code and functional issues of existing jails in planning for improved services and building projects.
4. Taking into consideration State of California minimum code requirements for structural performance, life safety and energy as a condition of flexible, functional and well-designed building projects to improve service in long-term programs and building life cycles costs for aging jails.

# OUR PANEL FROM CALIFORNIA



**Kenneth J. Harms**  
Kitchell CEM



**Carol S. Lanham**  
Kitchell CEM



**Rona G. Rothenberg, FAIA**  
County of Alameda

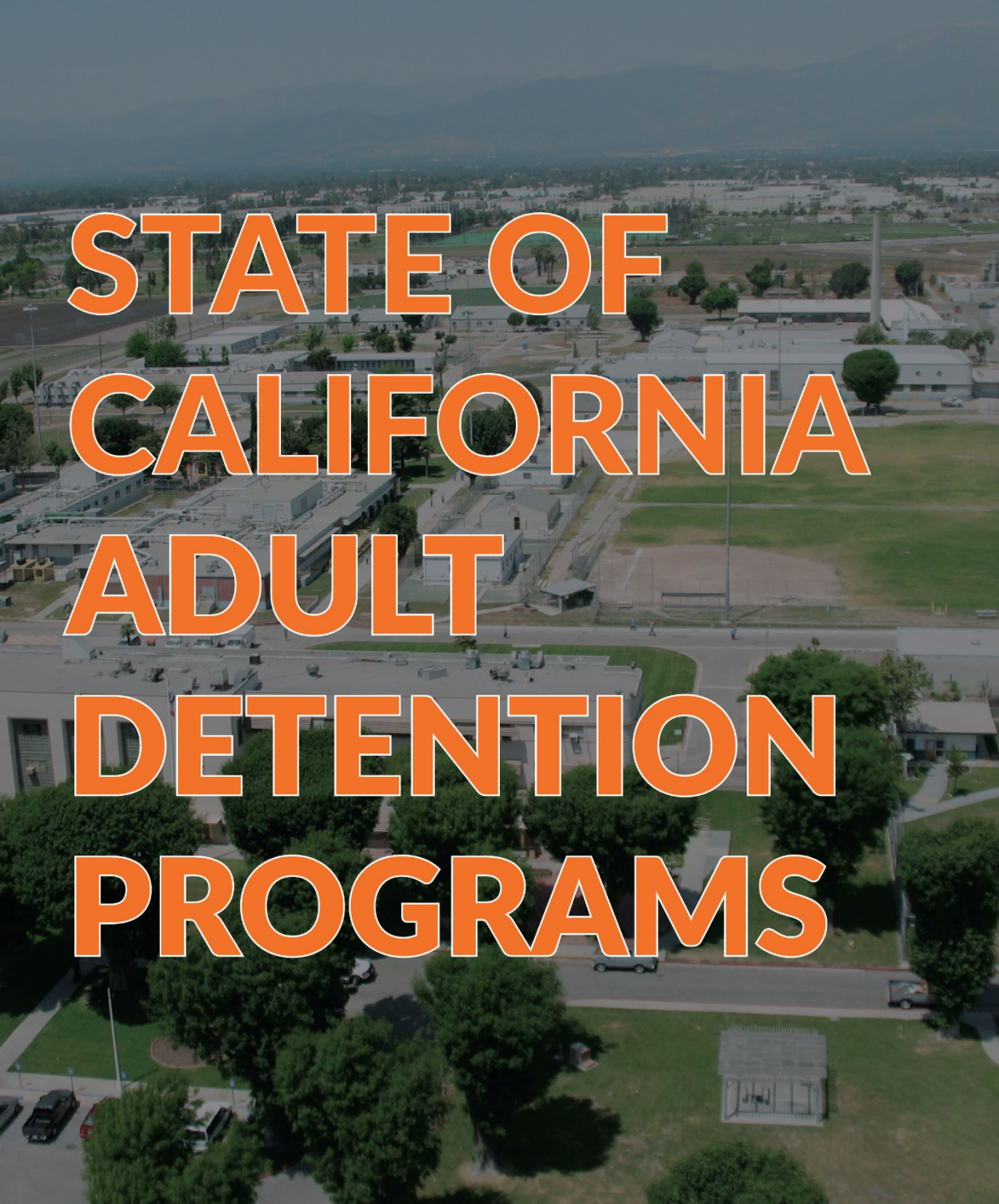


**Gary Retel**  
DLR



**Bruce Oveson**  
Sonoma County





# STATE OF CALIFORNIA ADULT DETENTION PROGRAMS

- Jurisdiction is under Executive Branch California Department of Corrections and Rehabilitation (CDCR)
- Budget includes over \$11.3B for CDCR operations not including special funding for facilities improvements for mental health program support



# STATE OF CALIFORNIA ADULT DETENTION FUNDING PROGRAMS

## IMPACTS OF REALIGNMENT ON COUNTIES

1

Housing inmates for longer periods

2

CDCR lawsuits “roll” down

3

Older and sicker populations

4

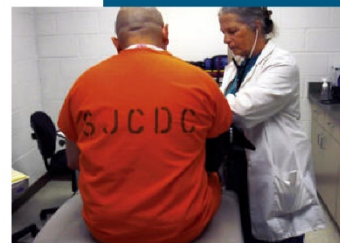
Lack of program space





Counties take on central role in rehab of realigned offenders.

- Split sentencing
- PRCS
- Flash incarceration
- Home detention
- Alternative sentencing



March 2011

Governor Brown signs AB 109  
"Realignment"

- Identifies non-violent,  
non-serious non-sexual  
felony offenders to be  
sentenced to County jails.

State prison population  
decreases to 137.5% of  
rated capacity. ►



County jail populations  
increase by 11,000



SB 1022, SB 863, AB 900  
supply \$2.3B to counties to  
build and bosser services



# KITCHELL IN NUMBERS

## SB 1022 FUNDING

Yolo County, Monroe Detention Center Expansion & Day Reporting Center	\$42 million
Stanislaus County, Re-Entry & Enhanced Alternatives to Custody Training (REACT) Center	\$44 million
Sacramento County, Rio Cosumnes Correctional Center	\$88.9 million
Solano County, Claybank Detention Facility & Vocational Training Center	\$40 million
Fresno County West Annex Jail	\$87.9 million
Santa Barbara County Sheriff Transition & Re-Entry Facility (preconstruction services only)	\$2.3 million

## AB 900 FUNDING

Madera County Jail	\$34 million
CDCR, Mule Creek State Prison Infill Project	\$516 million
Calaveras County Adult Detention Facility & Sheriff's Office	\$59 million
Kern County Justice Facility	\$126.7 million
Santa Barbara County Northern Branch Jail	\$88.9 million
Monterey County Jail Housing Addition	\$88.9 million
CDCR, Health Care Facility Improvement Program (HCFIP), California Institution for Men (CIM)	\$12.6 million
CDCR, Health Care Facility Improvement Program (HCFIP), California Institution for Women (CIW)	\$10 million
Los Angeles County, Mira Loma Detention Center	\$136.6
CDCR, Health Care Facility Improvement Program (HCFIP), Richard J. Donovan Correctional Facility	\$7.9 million

## SB 81 FUNDING

Shasta County Juvenile Rehabilitation Facility	\$18.7 million
Los Angeles County, Campus Vernon Kilpatrick Replacement Project	\$41 million
Riverside County, Alan M. Crogan Youth Treatment & Education Center	\$38.4 million
Santa Clara County, James Ranch Expansion Project	\$13 million
Monterey County, Salinas Juvenile Hall	\$52.7 million
San Luis Obispo County Juvenile Hall Expansion	\$21.3 million
Orange County Juvenile Hall Multipurpose Rehabilitation Center	\$23.3 million

## SB 863 FUNDING

Sonoma County Behavioral Health Housing & Transitional Unit	\$44.6 million
Ventura County, Todd Road Jail Health & Programming Unit	\$48 million
Alameda County, Santa Rita Jail	\$99 million
Yolo County, Leinberger Replacement Facility	\$30.5 million





## CDCR AB900 PHASES I/II

- Adult local criminal justice facilities financing to support construction, renovation and expansion of County jails to support associated programming for shifted detainees
- Responded to 2007 realignment of low-level offenders from State to local jurisdiction
- \$2.3B requested by 45 Counties
- \$1.2B awarded, many awards relinquished



**CDCR SB1022**

- For Adult local criminal justice facility financing for County jails
- Improved facilities intended to support and manage reentry and mental health programs as alternative to long-term incarceration
- \$373.3M requested by 21 counties





## CDCR SB863 (CA) BACKGROUND

18 Counties requested \$295M; \$160M awarded, some pending, some relinquished

For counties across the State of California, the failure to provide sufficient mental health services at jails has led to:

- Legal liability for a violation of the Eighth and Fourteenth Amendments of the Constitution,
- Violation of California Constitution Sections 7 and 17,
- Violation of the Americans with Disabilities Act,
- Violation of Title XV of the California Code of Regulations,
- Federal and/or State investigations, and
- Monitoring by outside legal counsel.



## **CDCR SB863 (CA) KEY FEATURES**

Consistent with Prop. 47, AB109 objectives:

- Urgency of getting adult local criminal facilities updated to meet critical program needs for re-entry and mental health services
- Intended to provide safe, accessible, efficient resources at existing detention facilities for mentally ill and special needs inmates

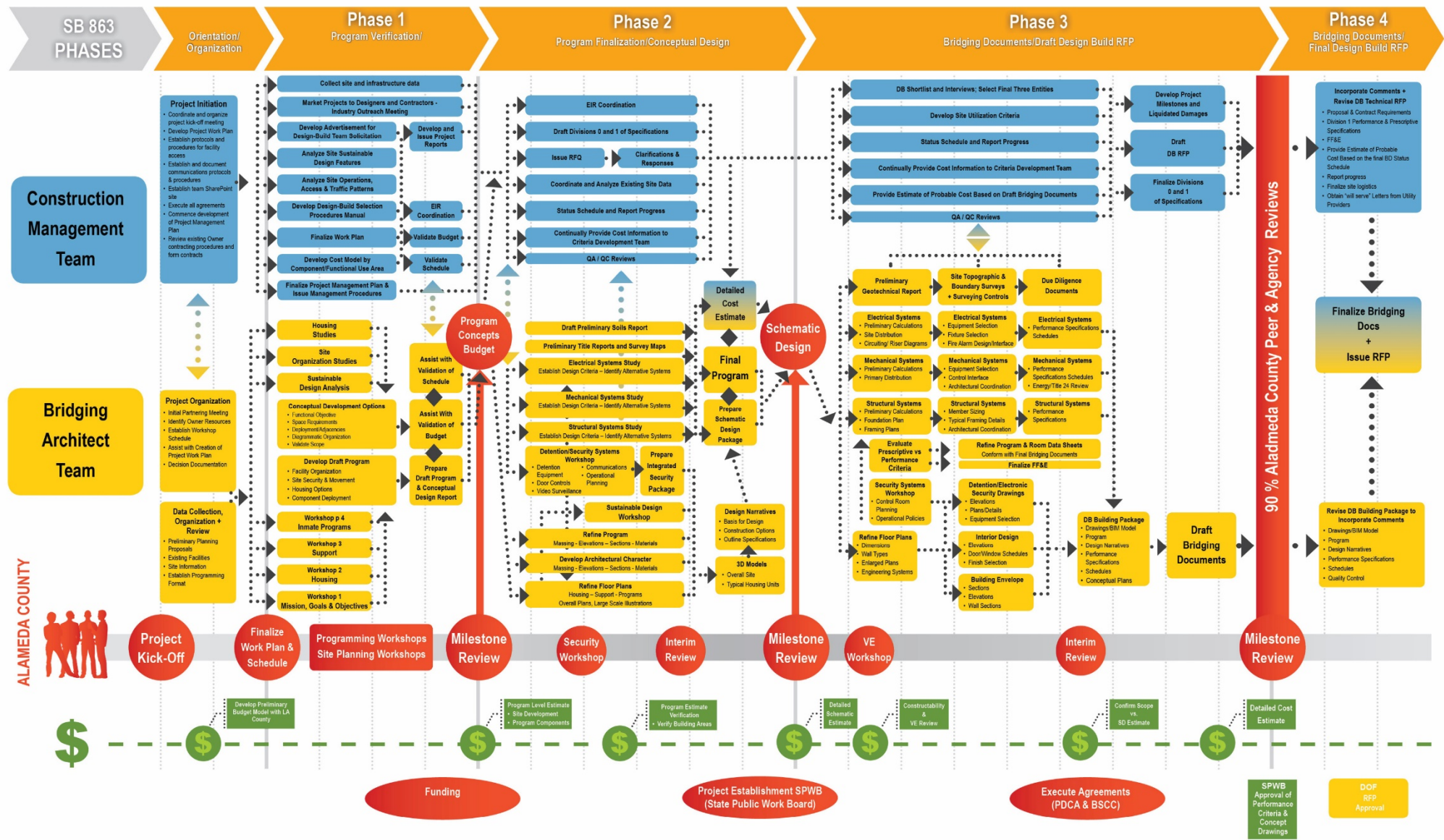


# STATUTE ALLOWED DELIVERY MODELS

- Design-Bid-Build
  - Traditional State process with full bid documents
- Design Build
  - Classic D-B with bridging
  - Performance documents

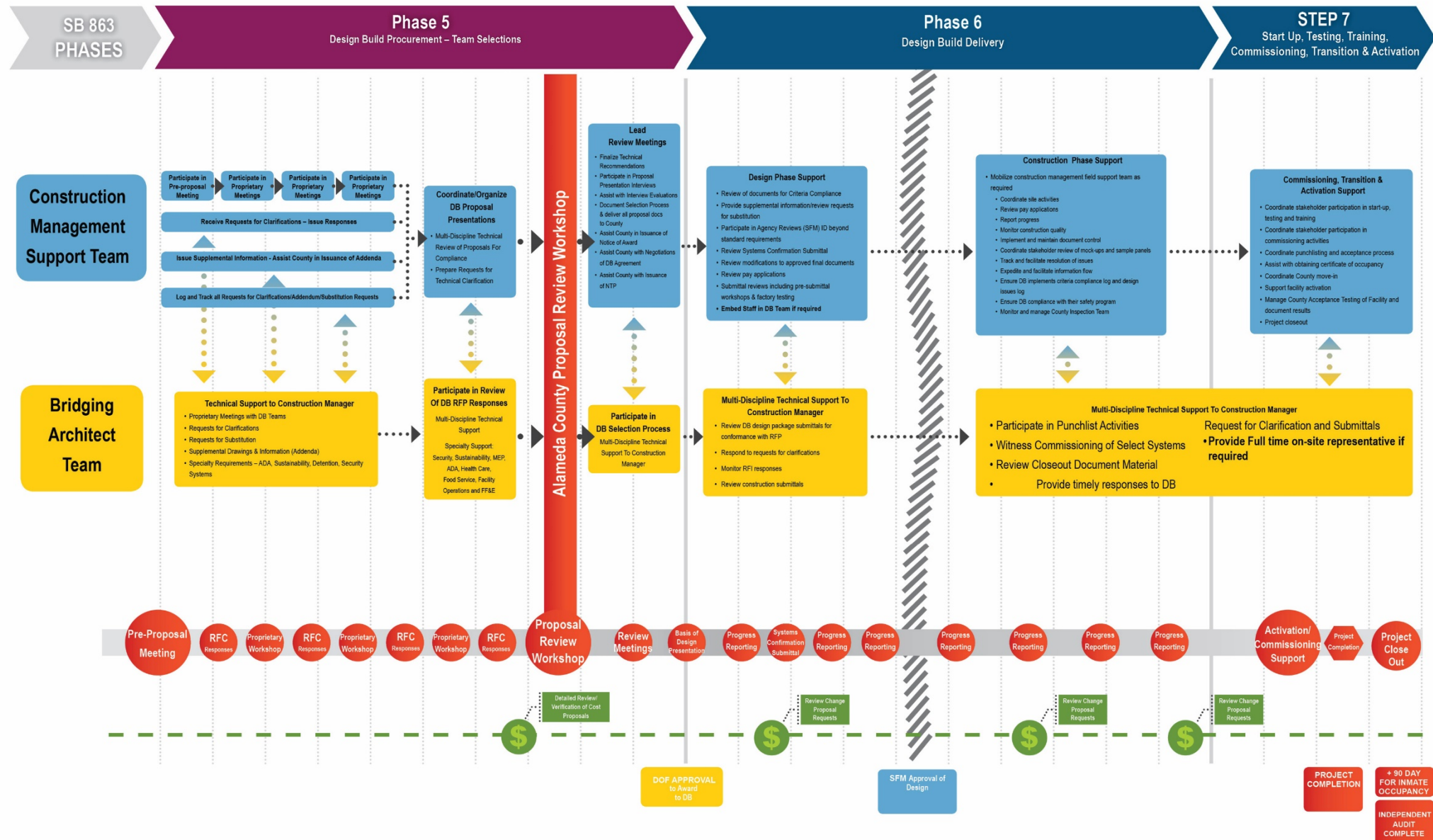


# STATE OF CALIFORNIA PROCESS

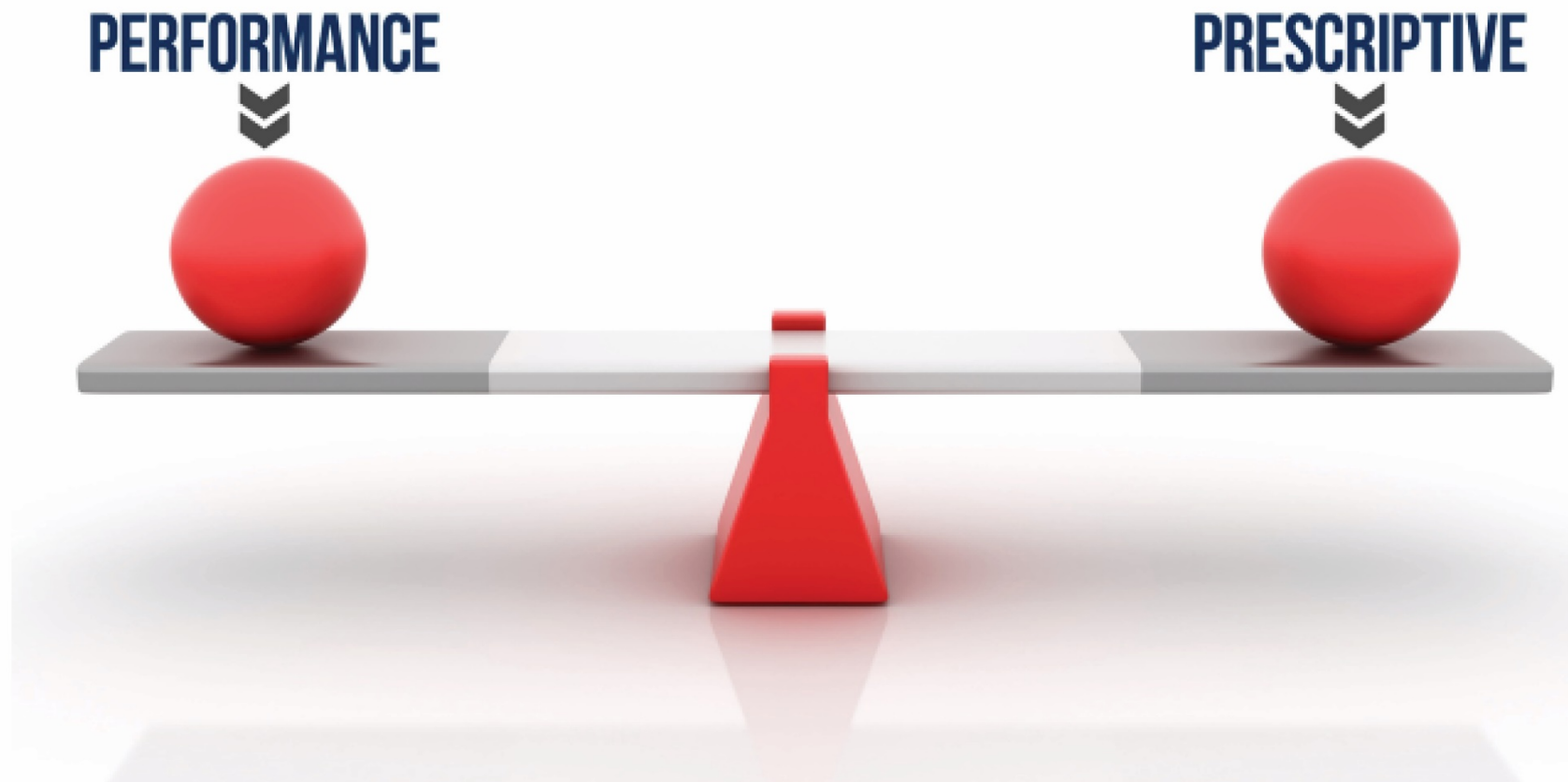




# STATE OF CALIFORNIA PROCESS



# DESIGN-BUILD CHOICE





An aerial photograph of the Mira Loma facility, showing a large, complex of buildings and parking lots. The facility is surrounded by a perimeter wall and is situated in a desert-like environment. The text "MIRA LOMA" is overlaid in the top left corner in a large, orange, sans-serif font.

# MIRA LOMA

The reactivation of the Mira Loma Facility as a Women's Detention Center provides Los Angeles County with an opportunity to re-envision the approach to the care, treatment and rehabilitation of female inmates.

## **Features of the proposed Mira Loma Women's Detention Center:**

- Housing for 1,604 low- to medium-security female inmates
- Approximately 36 acre campus setting
- Renovation and new construction of housing, administration and visitation facilities
- New dining, kitchen and warehouse
- New onsite medical clinic
- New transitional housing

An aerial photograph of the Mira Loma facility, showing a large, complex of buildings and parking lots. The facility is surrounded by a perimeter wall and is situated in a desert-like environment. The text "MIRA LOMA" is overlaid in the top left corner in a large, orange, sans-serif font.

## PROJECT OBJECTIVES



# MIRA LOMA

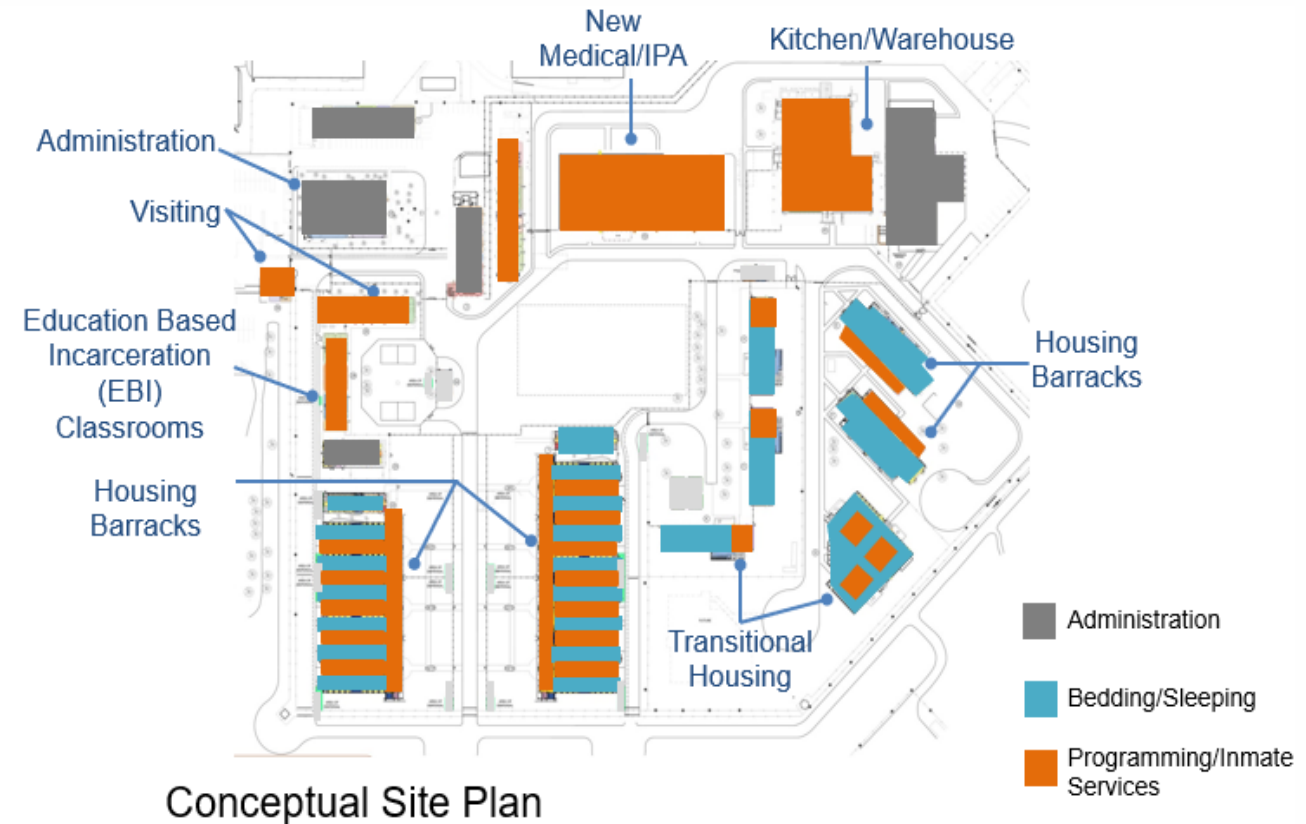
## PROPOSED PROGRAMS

### Treatment:

- **New Medical/IPA Building:** Healthcare, clinic and wellness services specific to the needs of women

### Programming:

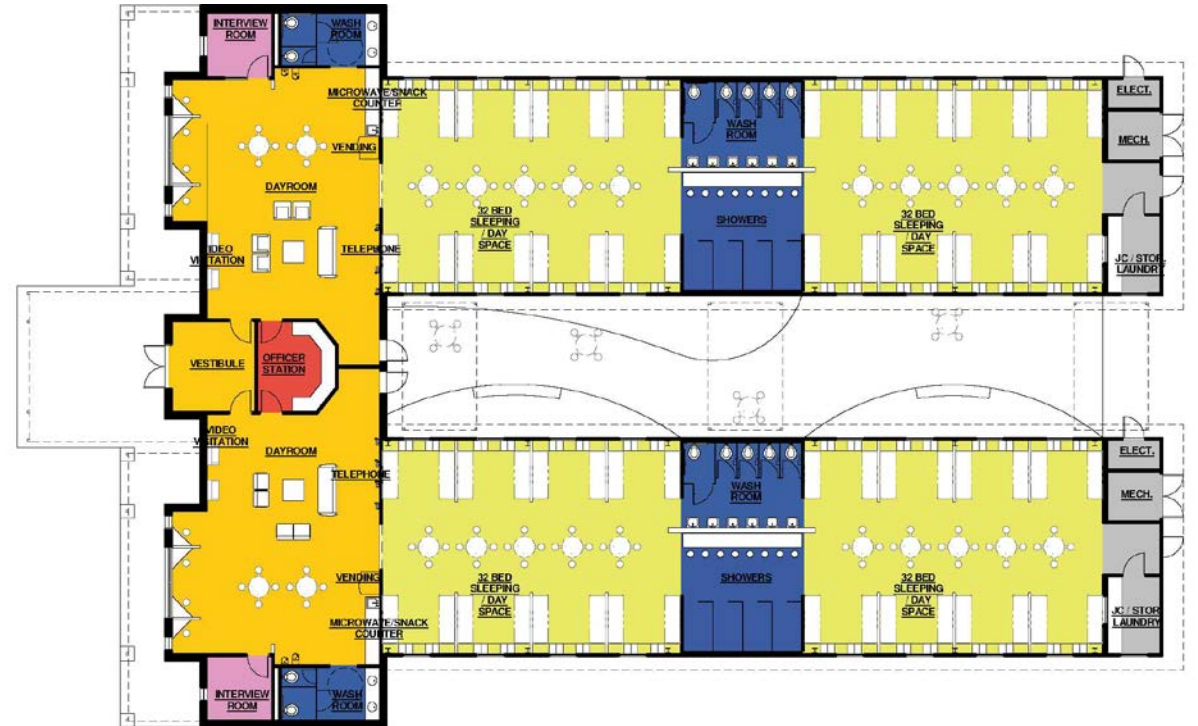
- **EBI Classroom Building:** Vocational and educational classes and programs
- **Housing Units:** Dayrooms and classrooms for personal development and treatment programs
- **Kitchen:** Culinary kitchen, job training and vocational programs





# MIRA LOMA

## PROPOSED HOUSING UNITS



**128-Bed Housing Unit  
Concept**





# MIRA LOMA

## STATE AB900 BOND PROGRAM

### AB900 Process:

- AB900 – Phase I application May, 2007 (relinquished September, 2008)
- AB900 – Phase II application May, 2011
- State approved Performance Criteria Package April 12, 2018.
- State approved release of the RFP to solicit Design-Builders on May 31, 2018
- Proposal period ends and selected Design-Builder notified November 6, 2018
- Next Step: County Board of Supervisors and State approve award to selected Design-Builder



# LOS ANGELES COUNTY

“

“... the Camp Kilpatrick project is about more than constructing a replacement facility ... it is about a vision for the future ... a vision focused on youth treatment resulting in improved outcomes for each individual, their community and society ... it will establish a new model for LA County, California and the nation ...



## RATES OF TRAUMA IN JUVENILE JUSTICE YOUTH

- LA County Probation is the largest Probation Department with more than 6,500 employees.
- 3 juvenile halls, 9 juvenile camps totaling 50 different facilities serving 750,000 youth ages 12-17
- Average daily population of 800-1,000 kids with a historic high of 1,800 kids back in 2001
- Since 2004 as Probation moves toward committing only the most high risk youth while diverting many youth to receive probation services at home.



# LOS ANGELES COUNTY

“

The first day in camp, I felt that everyone had already given up on us. Being housed in a large dorm back then was like being in ‘Fight Club.’ I had to watch my back constantly.

”

— Vincent, former resident

## THE OLD LA MODEL

“

If you have a facility that looks and acts like prison, kids are going to act like criminals, guards are going to act like guards.

”

— Michelle Newell Children’s Defense Fund



# LOS ANGELES COUNTY

## RATES OF TRAUMA IN JUVENILE JUSTICE YOUTH



**93% of adjudicated youth  
reported at least one or  
more traumatic experiences.**



**Youth in the Juvenile Justice  
population have rates of  
PTSD that exceed those of  
service members returning  
from Iraq.**



**The average number of  
different traumas reported was  
six.**



A photograph showing the backs of several men standing in a line outdoors. They are wearing light blue or grey short-sleeved shirts. The man on the far left is wearing orange pants. The man in the center is wearing grey pants. The man on the right is wearing tan pants. They all have their hands clasped behind their backs. The background shows some trees and a building under a clear sky.

# LOS ANGELES COUNTY

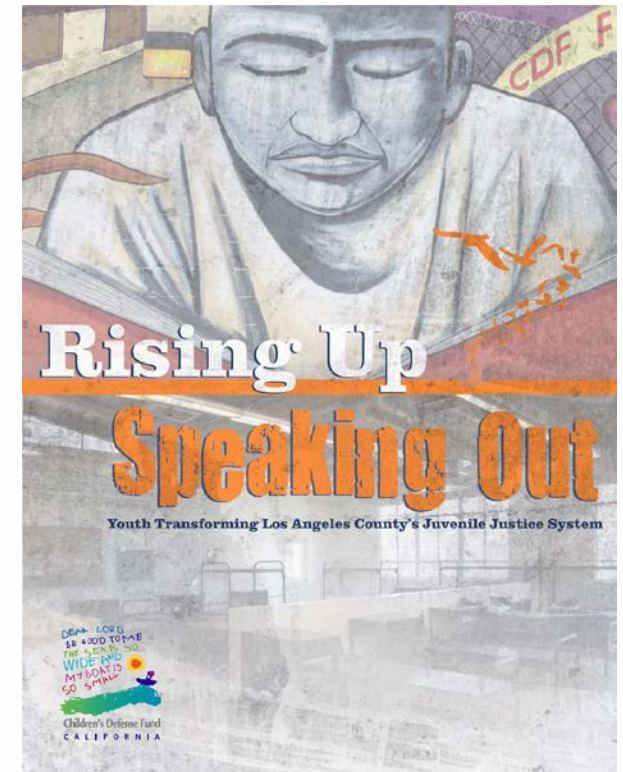
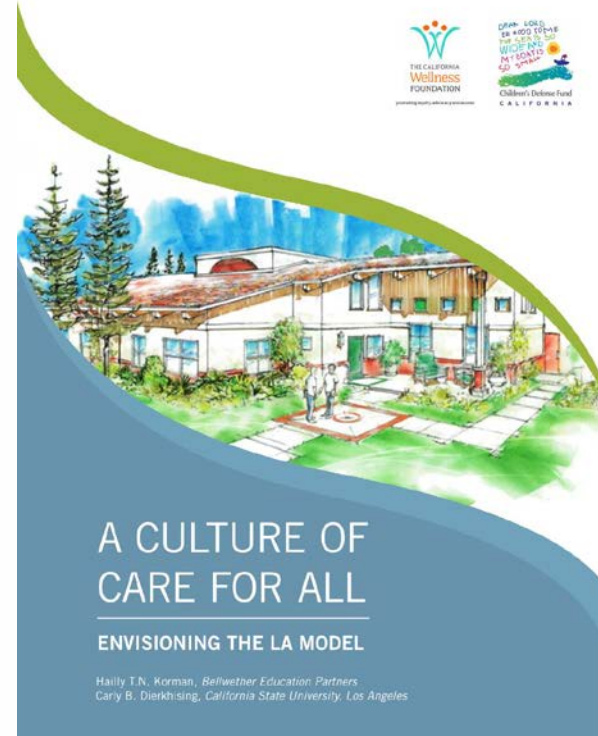
**CORRECTIONAL  
APPROACH  
DIDN'T WORK**

Our former approach of a large dorm model didn't allow for meaningful engagement with youth, or give them the opportunity to examine their own behavior choices and its impact on others.



# LOS ANGELES COUNTY

## THE NEW LA MODEL CAMPUS KILPATRICK MALIBU, CA





# LOS ANGELES COUNTY

427  
CAMPUS KILPATRICK

## COMPETITION DESIGN CRITERIA

### Criteria

- Housing
  - 2 - 12/24 Bed Buildings
  - 3 - 12/36 Bed Buildings
- Internalized School – Corridor Circulation
- Multi-Purpose Gym – Physical Education, Recreation, Dining, Visiting
- Combined Food Service & Culinary Arts Kitchen
- Dining via or trayed/carted meals
- Internalized organization and circulation



# LOS ANGELES COUNTY



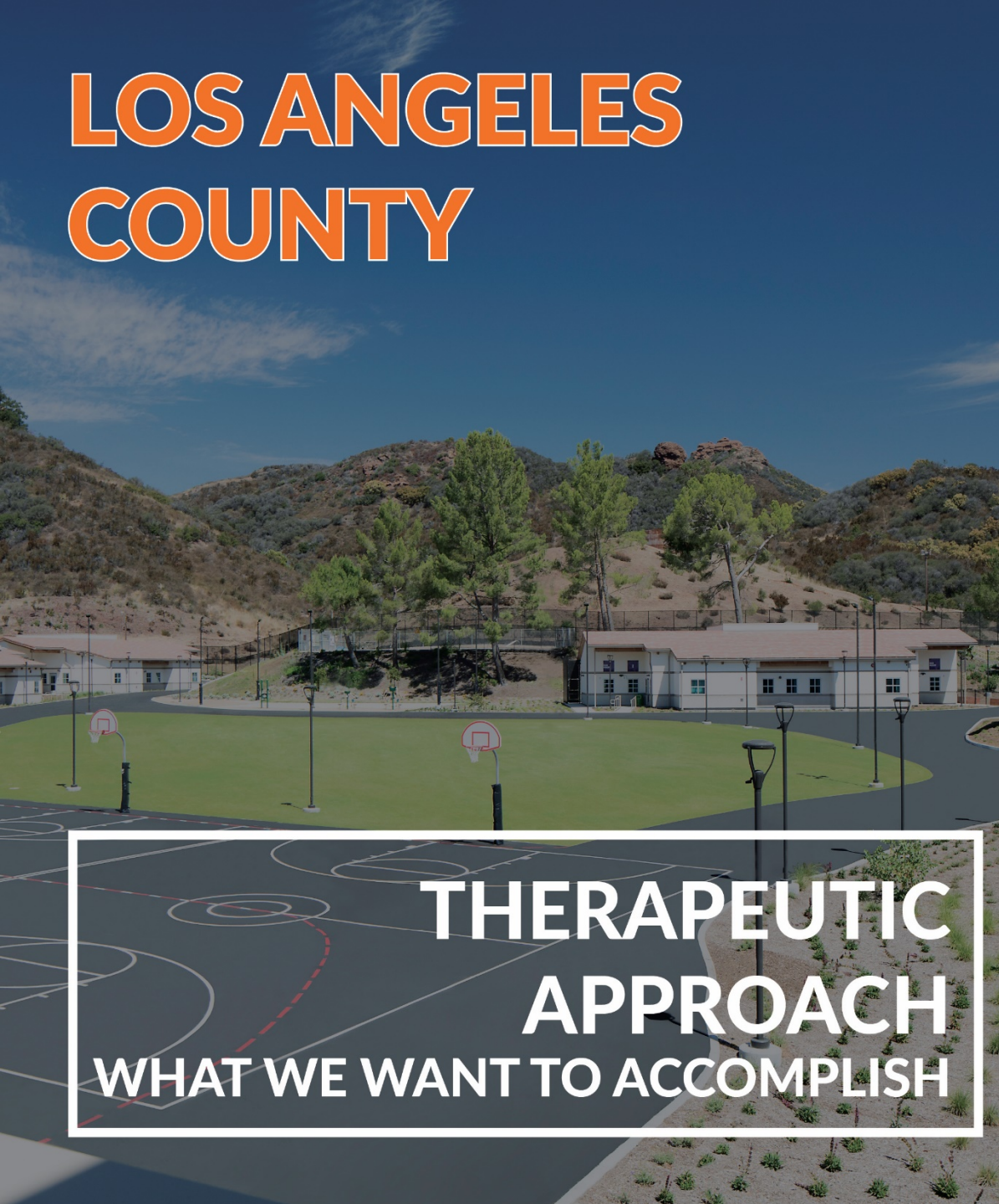
## COUNTY'S EXPECTATIONS

### New LA Model – Campus Kilpatrick

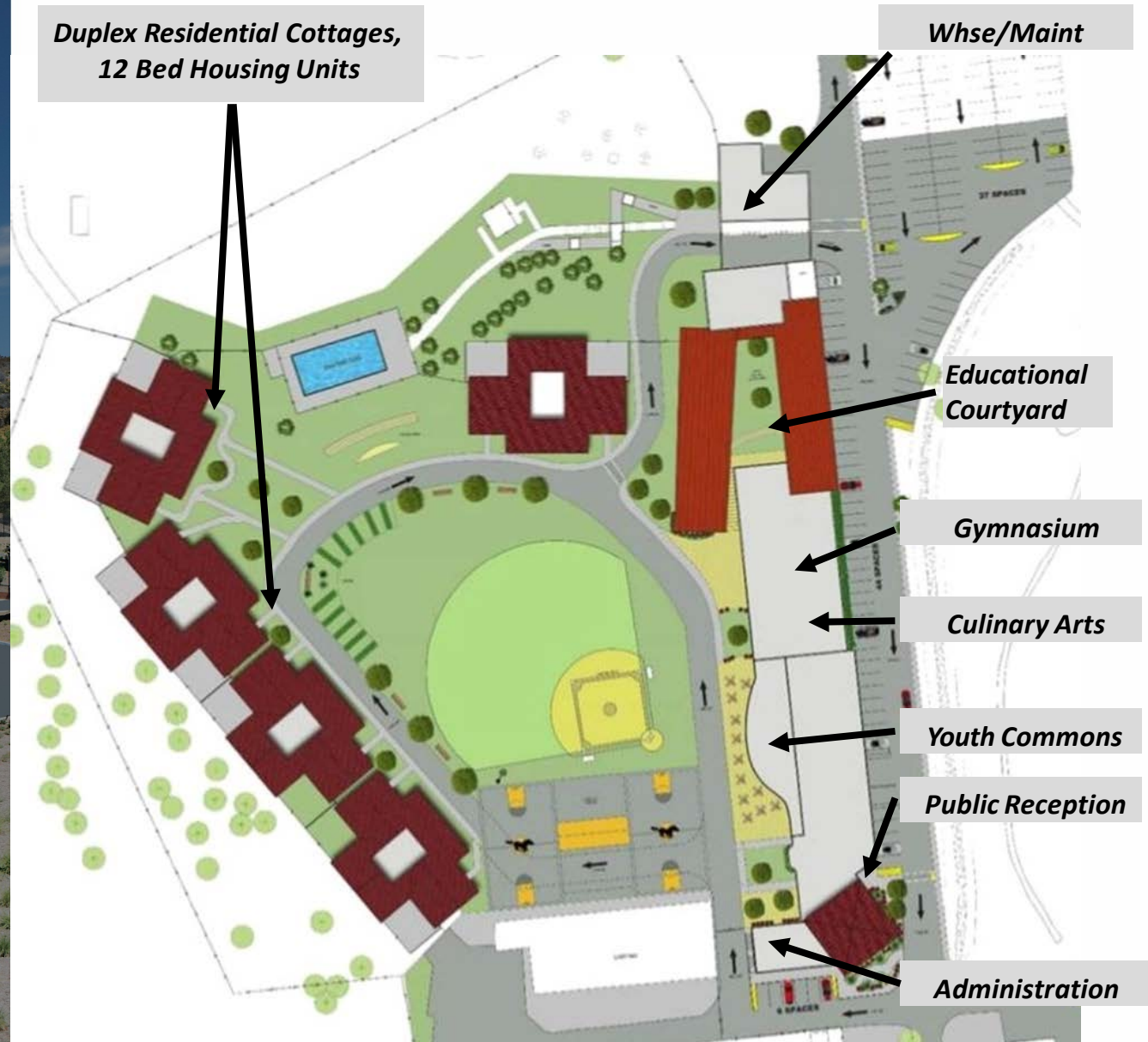
- New Replacement Facility, 120 Beds – total demolition and reconstruction
- Emphasis on the individual and small group living and program delivery
- Care & Custody vs. Custody & Control
- Emphasis on a holistic Integrated Treatment Model (LA Model)
- Emphasis on education, arts (visual and performing), skill acquisition, intervention, and behavioral modification
- A physical environment that is non-institutional, residential/home-like living accommodations and capitalizes on the climate by bringing the inside-out and the outside in
- A pilot project for the rest of the County's youth facilities



# LOS ANGELES COUNTY



**THERAPEUTIC  
APPROACH  
WHAT WE WANT TO ACCOMPLISH**

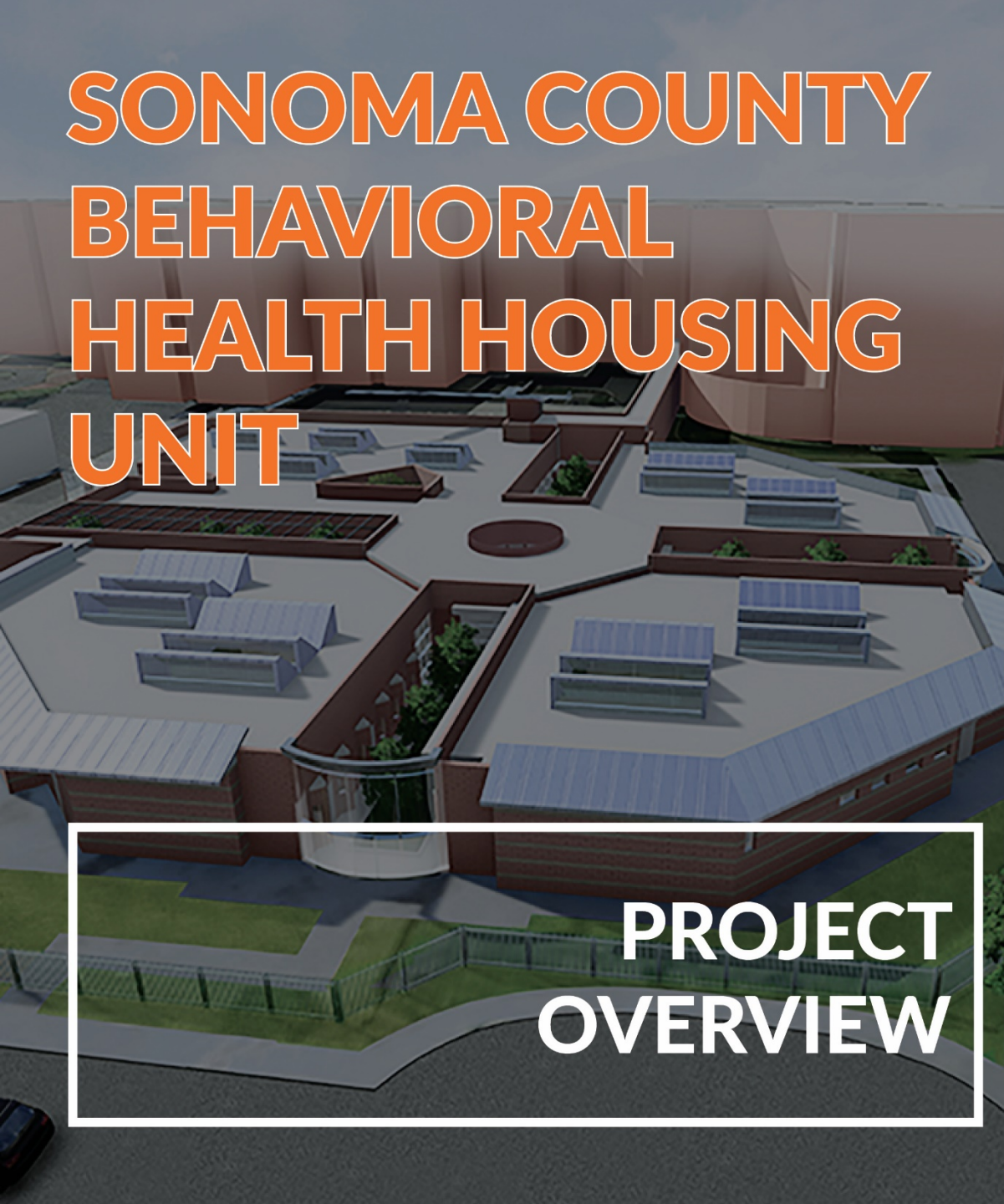








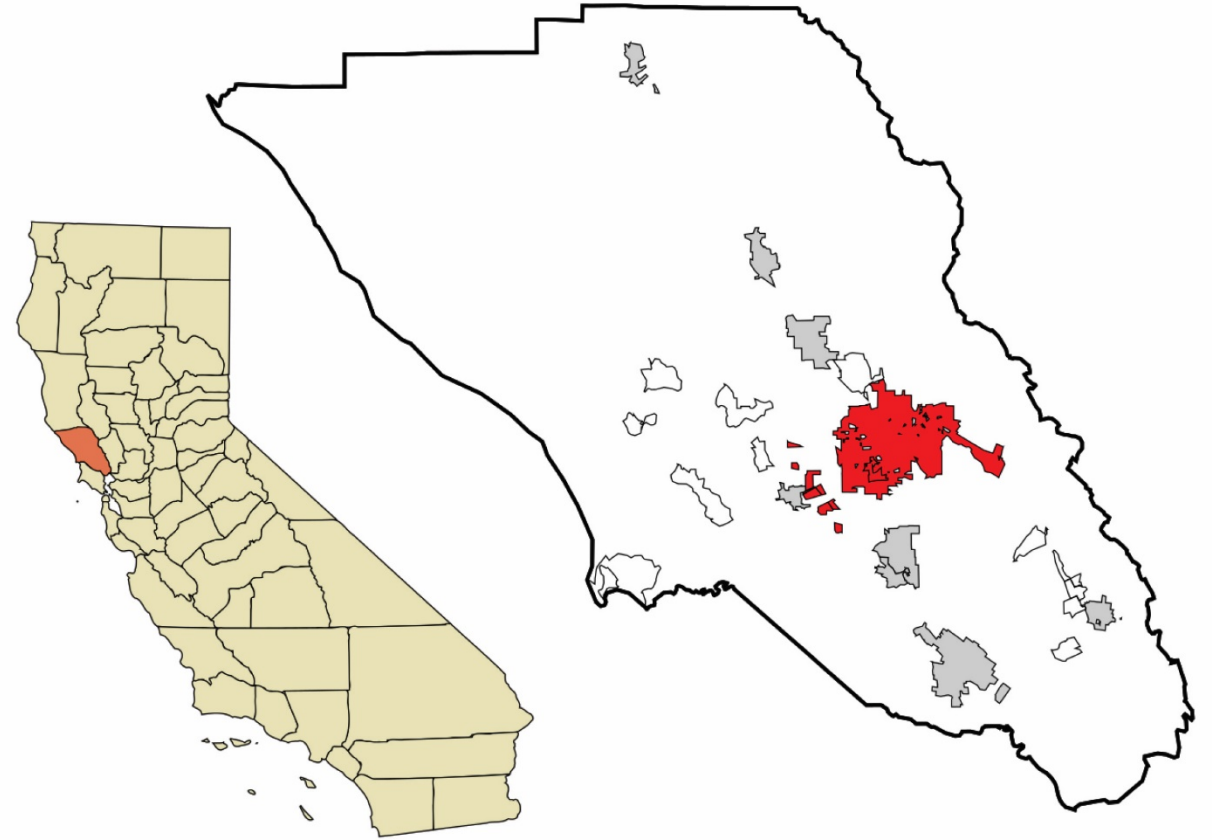
# SONOMA COUNTY BEHAVIORAL HEALTH HOUSING UNIT

An architectural rendering of a proposed behavioral health housing unit. The design features a central courtyard with several rectangular and circular paved areas. Around the perimeter of the courtyard are multiple rectangular building footprints, some with flat roofs and others with low-pitched gabled roofs. The buildings are connected by a network of walkways and ramps. In the background, a large, modern building with a curved facade is visible. The overall style is contemporary and functional.

**PROJECT  
OVERVIEW**

# SONOMA COUNTY BEHAVIORAL HEALTH HOUSING UNIT

COUNTY OF  
SONOMA/CITY OF  
SANTA ROSA, CA





# SONOMA COUNTY BEHAVIORAL HEALTH HOUSING UNIT

## PROJECT STATISTICS

Located on a vacant County-owned  
3.58 acre parcel adjacent to MADF

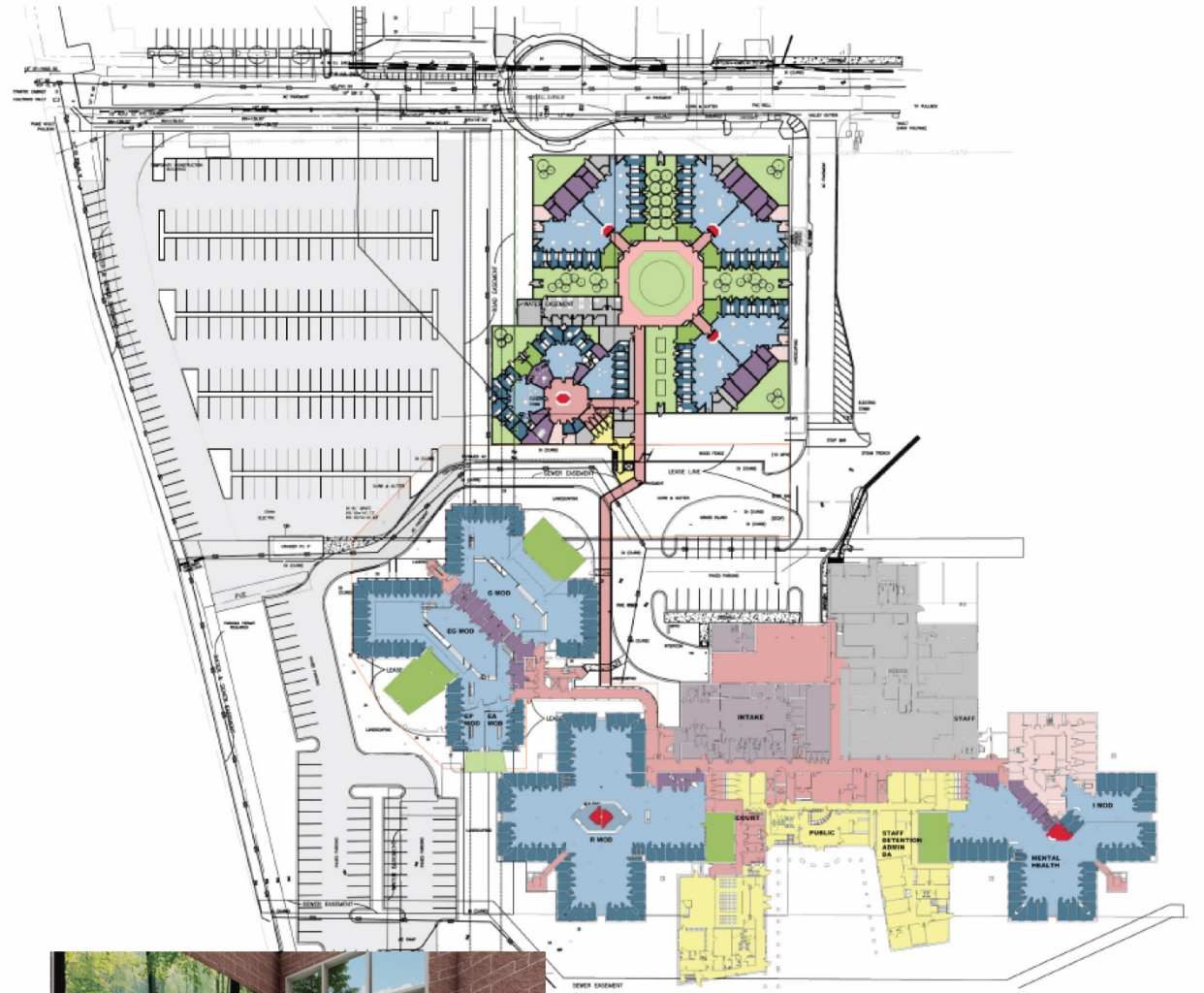


County of Sonoma Administration Center Complex



# SONOMA COUNTY BEHAVIORAL HEALTH HOUSING UNIT

DESIGN  
OVERVIEW





# SONOMA COUNTY BEHAVIORAL HEALTH HOUSING UNIT



- 3 Standard Units (20 Beds Each)
- 1 High-Security Unit (12 Beds)
- 9 Dayrooms
- 7 Multi-purpose Rooms
- 8 Exterior Recreation Areas
- 11 Green-space Areas
- Sheriff FTE: 37

## Advantages-

- Treatment Focused- Smaller Units
- Evidence Based Best Practice Design
- Increased opportunity for “Out of Cell Time”
- Six 10 Bed Sub-units allows increased flexibility in classification
- Higher percentage of treatment spaces to inmate
- Smaller Dayrooms- More Residential Scale

# SONOMA COUNTY BEHAVIORAL HEALTH HOUSING UNIT

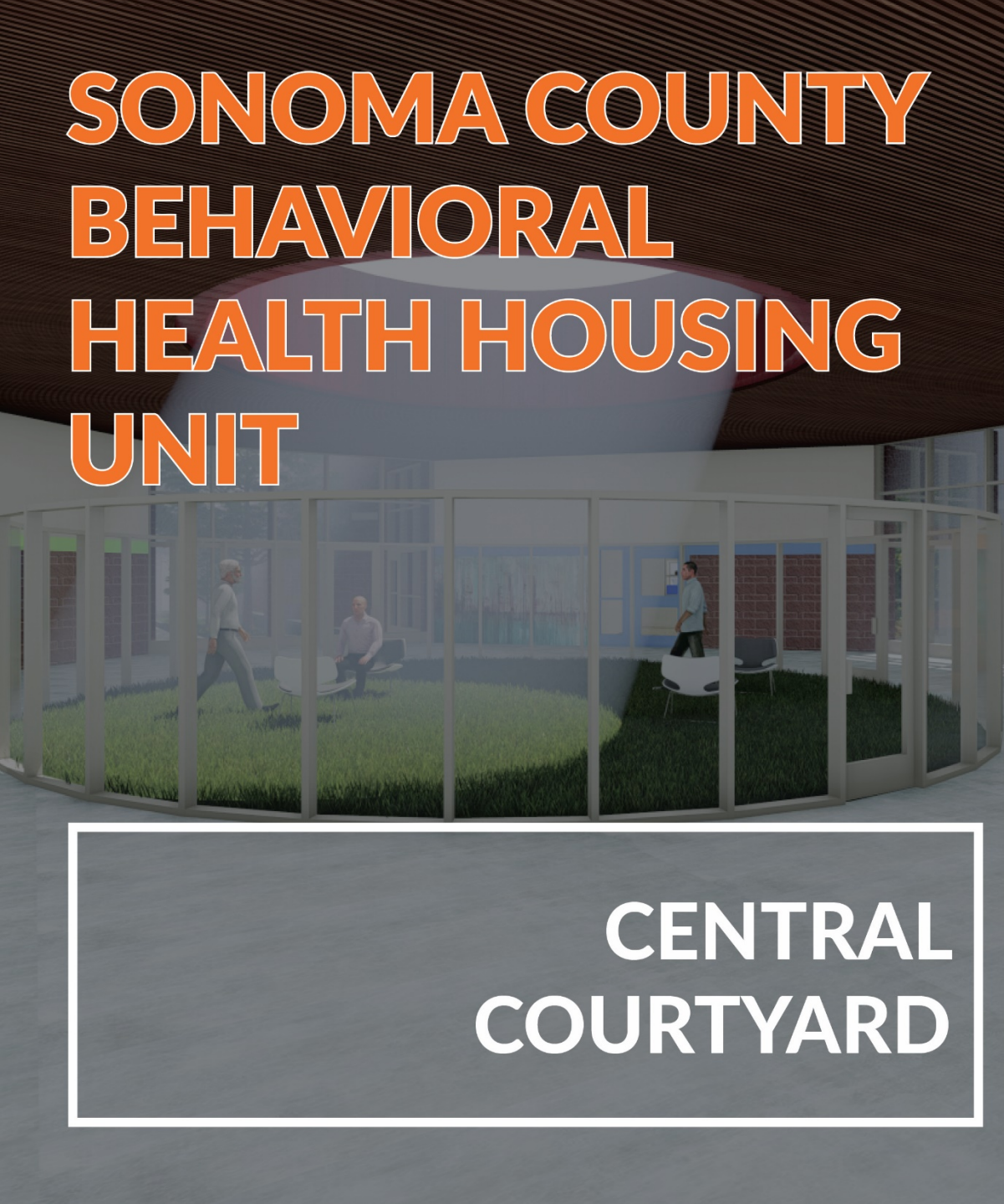


## DESIGN GOALS

- Quality of Environment – Natural Light, Views, Color, Acoustics, Normative Environment, Access to the Outdoors
- Avoid long corridors and linear spaces
- Reduce the sense of crowding and the “Apparent” density
- Flexible furnishings to accommodate group interaction and treatment on the housing unit
- Create dynamic therapeutic communities
- Provide space for staff to rest and recharge – indoor lounge with outdoor patio
- Views of Nature
- Small Housing Units for Classification and Treatment



# SONOMA COUNTY BEHAVIORAL HEALTH HOUSING UNIT



CENTRAL  
COURTYARD

## Design Clarity & Quality of Environment

- Compact- Simplified Circulation
- Organized Around Secure Internal Courtyard
- Residential Scaled- Single Level
- Inward Focused Views to Non-Inmate Landscaped Areas



# SONOMA COUNTY BEHAVIORAL HEALTH HOUSING UNIT

Research & Evidence Based Practices Driven Design...

*Views of Nature  
even murals  
relieve stress  
... Wener et. al.*

RESEARCH & EVIDENCE  
BASED PRACTICES  
DRIVEN DESIGN



# ALAMEDA COUNTY

The background image shows the interior of a jail. It features a two-story structure with a mezzanine level enclosed by metal railings. A wide staircase with metal railings leads up to the mezzanine. The ground floor is filled with several rectangular tables, each with attached benches, arranged in rows. The walls are light-colored, and the ceiling has a grid of fluorescent lights. In the foreground, a portion of a brown leather sofa is visible.

## BACKGROUND

### Background

- Qualified for \$54 Million conditional award for the construction of a critically needed Health Program and Services Unit at its 750,000 sf Santa Rita Jail in Dublin, CA.
- 7th largest County by population, the Alameda County Sheriff's office is the largest provider of mental health services in the County.
- Proposed 38,000 infill building + renovation of two adjacent Housing Units will provide critically needed health care program and mental health services space for men and women for improved and safe service in the large 1983 existing jail.

# ALAMEDA COUNTY

The image shows a large, modern, two-story facility, likely a health services unit. The ground floor features a central staircase with a metal railing, several rooms with doors, and a common area with tables and chairs. The upper floor is visible through glass railings, showing more rooms. The ceiling has a grid of recessed lights. The overall design is clean and functional.

## Key Features - Health Program and Services Unit Project Full Spectrum Health Services Scope

- Mental Health and Re-Entry Services
- OB/GYN Clinic
- Ophthalmology
- Dialysis
- Oral Surgery and Dental Services
- Administrative support space for County staff and CBO's
- Interview Rooms
- Classroom space

**KEY FEATURES**



# ALAMEDA COUNTY

An aerial photograph of the Alameda County Santa Rita Jail. The facility is a large, rectangular complex with multiple wings, featuring a central green courtyard and several smaller courtyards. The building has a mix of white and grey roofs. To the right of the main facility is a red running track and a green field. The surrounding area includes parking lots, roads, and some greenery. A red location pin is placed on the central part of the facility.

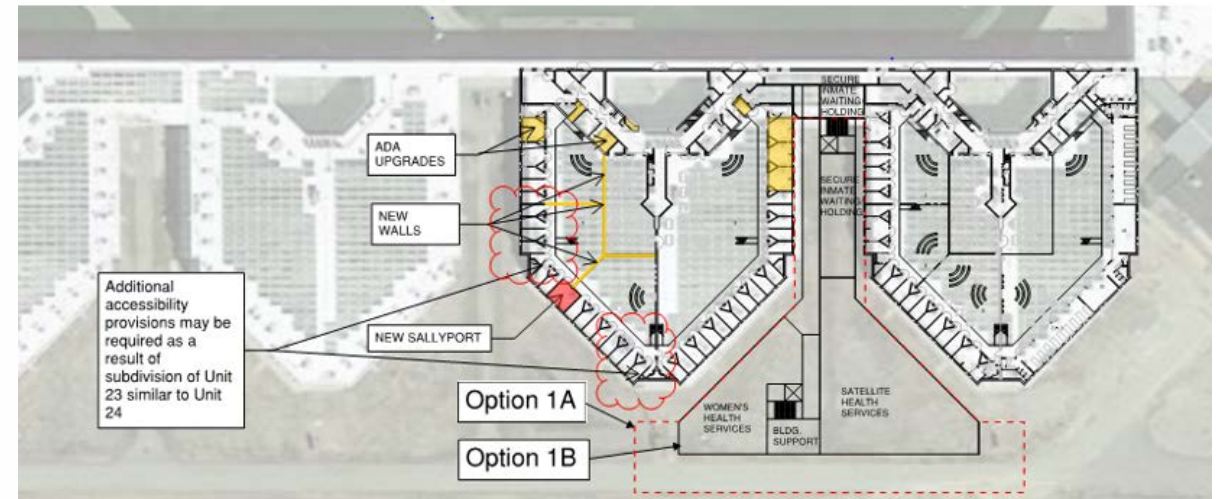
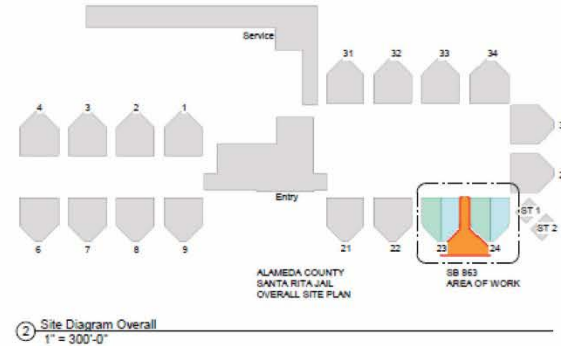
Alameda County Santa Rita Jail

## HEALTH PROGRAM SERVICES UNIT



# ALAMEDA COUNTY

## HEALTH PROGRAM SERVICES UNIT





# ALAMEDA COUNTY



## ISSUES & STATUS

### Issues

- Project study assessed 1988 building cost of renovation, upgrade and new construction, logistics of project execution
- Functional and space requirements validated and programming completed

### Status

- Project bridging pending start in early 2019 with completion of State's first milestone approvals

# CALIFORNIA DETENTION MODELS



## KEY FEATURES

### Key Features

- Focus on improved or replaced facilities and associated rehabilitative programming
- Operating models based on ending long-term incarceration
- Mental health and related medical program units reflect modern hospital design approaches



# CALIFORNIA DETENTION MODELS



- Projects are slow to advance due to political and funding challenges and rigorous State requirements
- Physical plant and logistical issues must be considered in long-term detention architectural projects
- Costs of jail construction in California is extraordinary

## CHALLENGES



# CALIFORNIA DETENTION MODELS



- Design solutions from medical design can be applied
- Use of performance specifications is applicable to detention projects when programs are well-developed

**OPPORTUNITIES**



# CALIFORNIA DETENTION MODELS




- Projects will continue to advance to completion through 2022 and beyond
- Priorities may shift in both architectural solutions and program service models for detention as the individual projects are completed
- Cost assessment over a 10-year period may inform capital outlays affecting State resources or Counties' decisions to advance projects with or without State reimbursement



**NEXT STEPS**



A wide-angle photograph of a large, empty waiting area. In the foreground, several rows of blue plastic chairs with metal frames are arranged. The background features large windows with horizontal blinds, a television mounted on the wall, and a reception desk in the distance. The floor is a light-colored concrete.

# QUESTIONS & ANSWERS



A large, empty waiting area with rows of metal chairs and large windows overlooking a parking lot and landscape. The chairs are arranged in three rows, facing towards the left. The floor is a smooth, light-colored concrete. The walls are made of light-colored stone or concrete blocks. Large windows on the right side of the room provide a view of the outside. Outside, there is a parking lot with several vehicles, including a white pickup truck and a white van. In the background, there is a flat landscape with some trees and a cloudy sky. The word "THANK YOU" is overlaid in the center of the image in a large, orange, bold font with a white outline.

**THANK YOU**