



HALF MOON BAY LIBRARY

CAE INFORMAL
LEARNING
SUBCOMMITTEE

CHRIS NOLL, FAIA
PRINCIPAL

**NOLL
& TAM**
ARCHITECTS

Half Moon Bay Library



Exterior Entry from Purissima Street

Site Context



Neighborhood Context

Located just a block from Main Street, the Half Moon Bay Library is close to the lively downtown of Half Moon Bay, next to a public middle school, surrounded by residential housing, and small scale professional and commercial businesses.

Site Plan





Exterior Entry from Purissima Street



Exterior Entry from Purissima Street



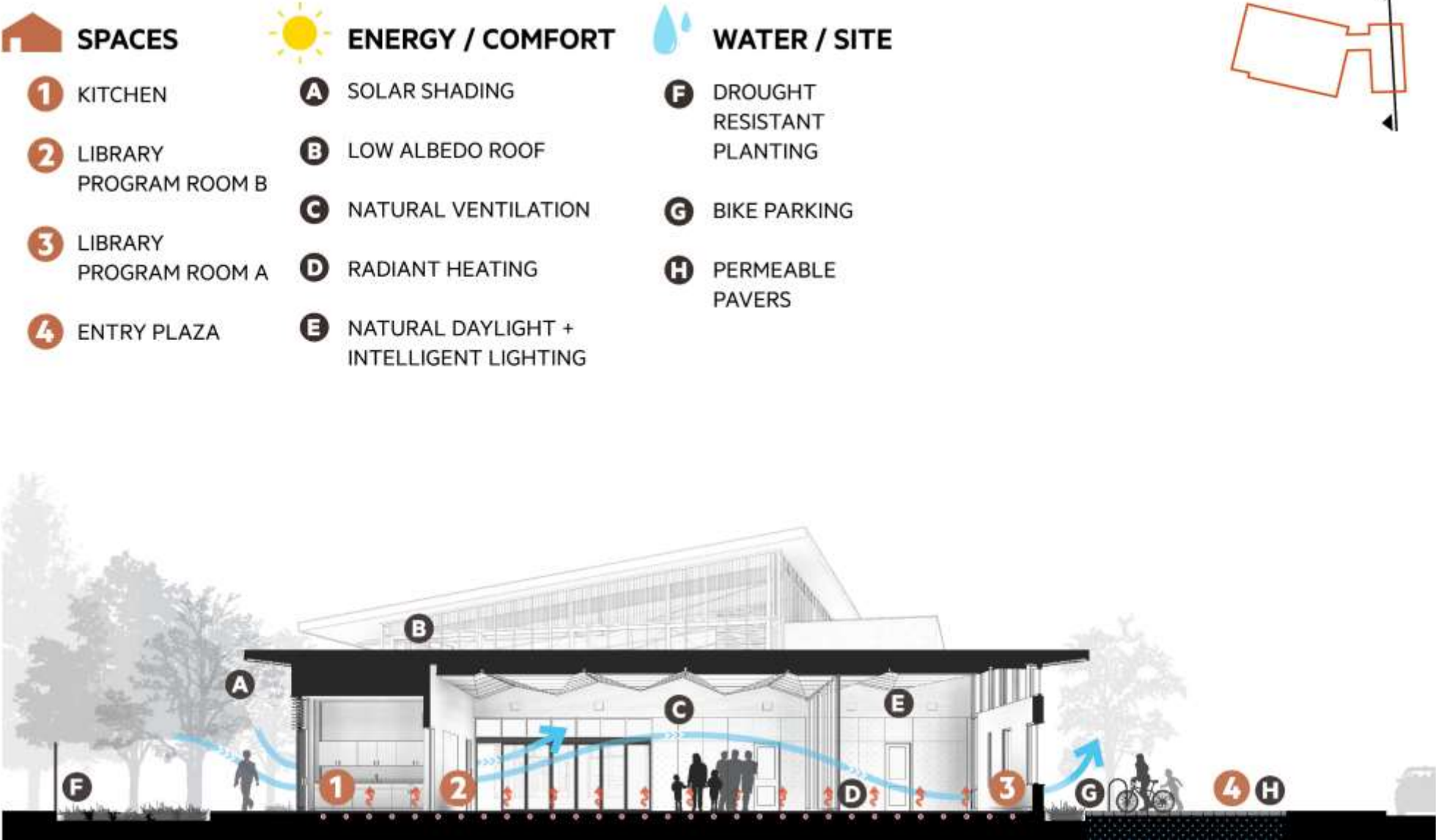
Natural Materials and Ocean Views

The design character relies upon a refined coastal palette. Simple, natural materials such as reclaimed wood, patinated copper and rough stone will weather attractively with minimal maintenance. Everywhere, natural light and views of nature and the ocean draw the outside into the interior space.

Sustainable Design Strategy



Sustainable Design Strategy



Achieving Ambitious Sustainability Goals

The building is designed to achieve both Zero Net Energy and LEED Platinum certification.

Spaces and Materials



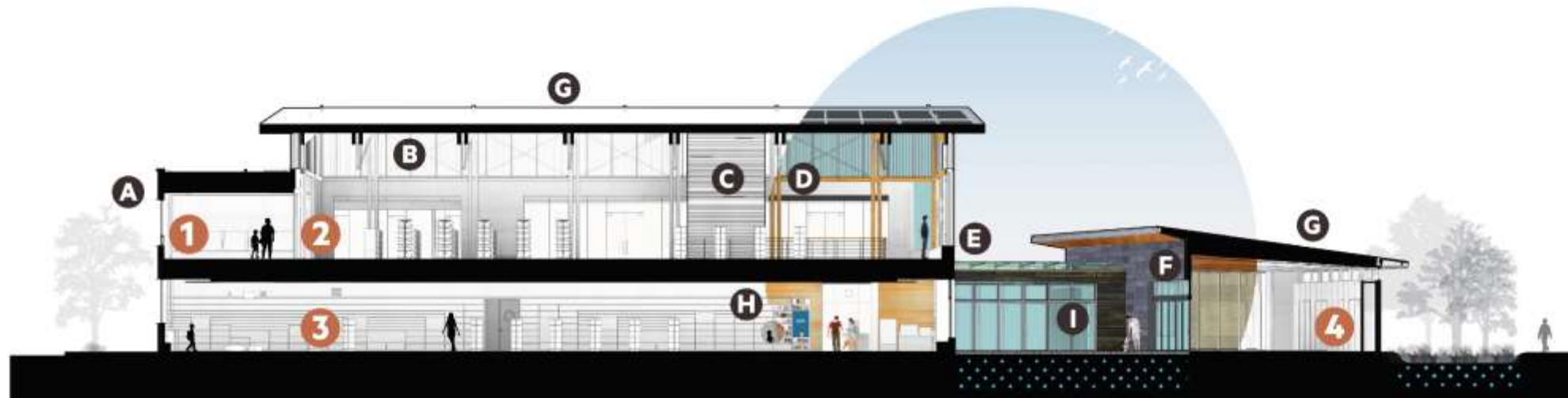
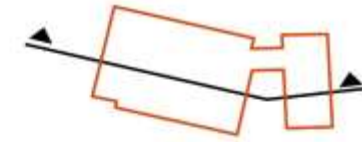
SPACES

- 1 GROUP STUDY
- 2 ADULT READING ROOM
- 3 CHILDREN'S LIBRARY
- 4 LIBRARY PROGRAM ROOM



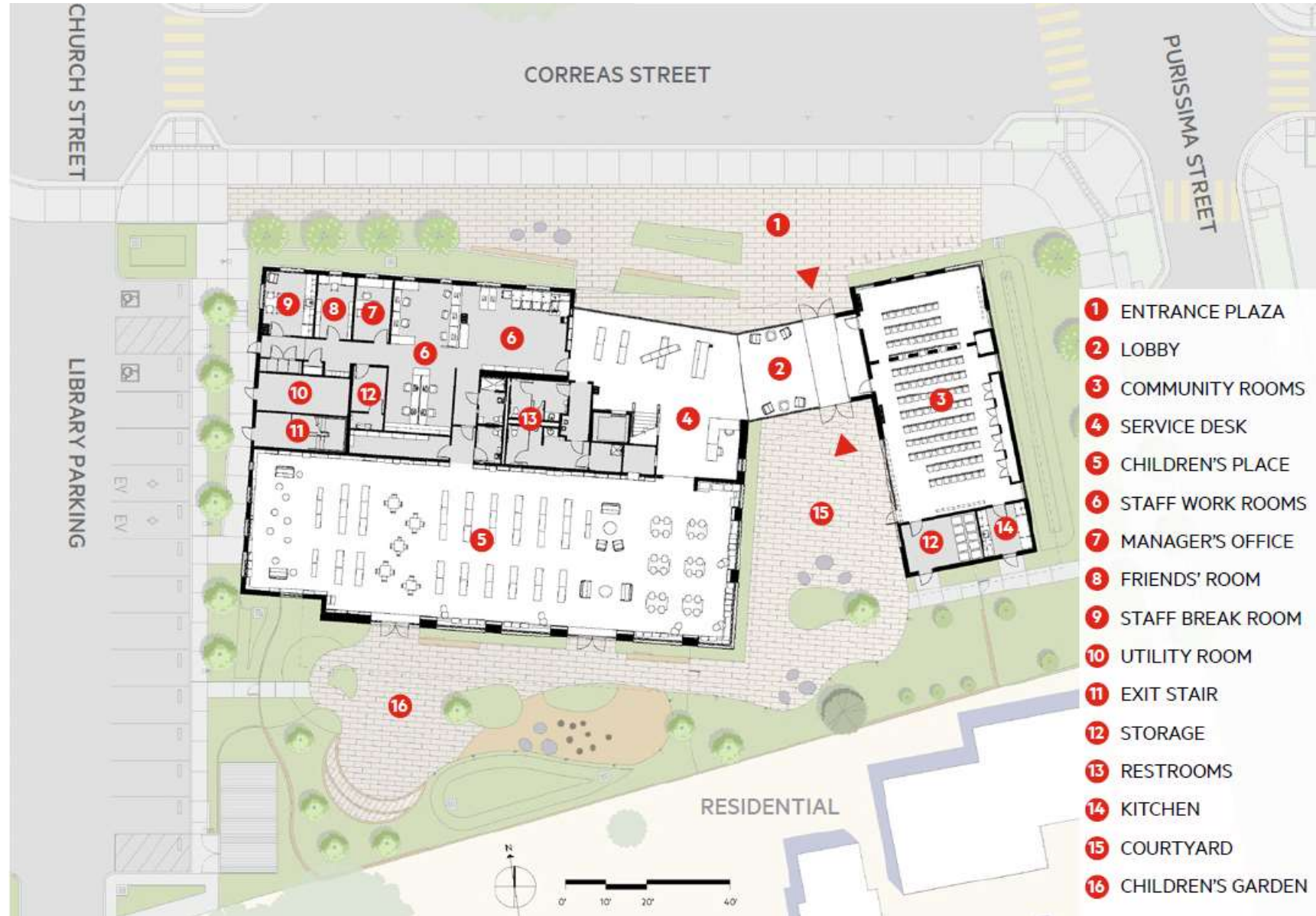
MATERIALITY

- A PRE-WEATHERED T&G CEDAR SIDING
- B EPIC DECK: STRUCTURAL, ACOUSTIC & INSULATING DECK
- C RECLAIMED TEAK
- D FSC WOOD FRAMING
- E GREEN ROOF
- F HEAT ABSORBENT/RADIANT STONE
- G LOW ALBEDO STANDING SEAM METAL ROOF
- H COAST INSPIRED WOOD PANELING
- I PRE-WEATHERED COPPER PANELS



Bringing the Outside In Natural materials reflect the coastal character throughout the library.

First Floor Plan





Entry First Steps Into the Library



Entry Service Desk and Children's Portal



First Floor Children's Area





First Floor Children's Collection & Technology



Designed for Learning and Fun
The pint-sized portal gives kids a fun way to get into the children's area. Green and blue pops of color represent playful water droplets and sea glass.



Connections to the Outdoors

The Children's Garden is directly accessible from the children's area, and visible through large windows with generous window seats.





Courtyard Children's Garden and Willow Thickets



Courtyard Children's Garden





Center of Activity

A community courtyard acts as an outdoor reading room, program space, and social scene. Nestled between the two wings, it is protected from ocean winds and captures the warmth of the sun.

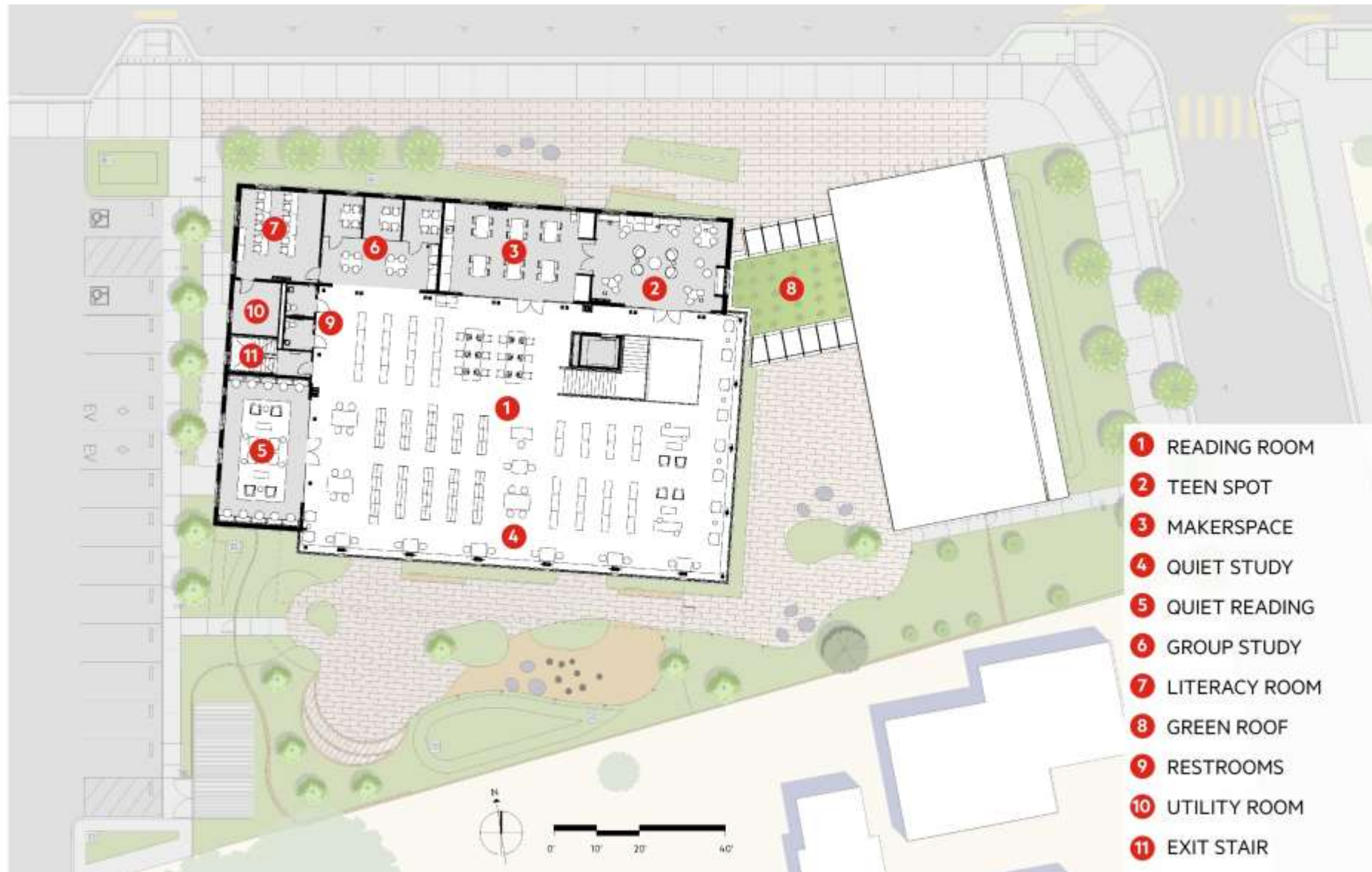


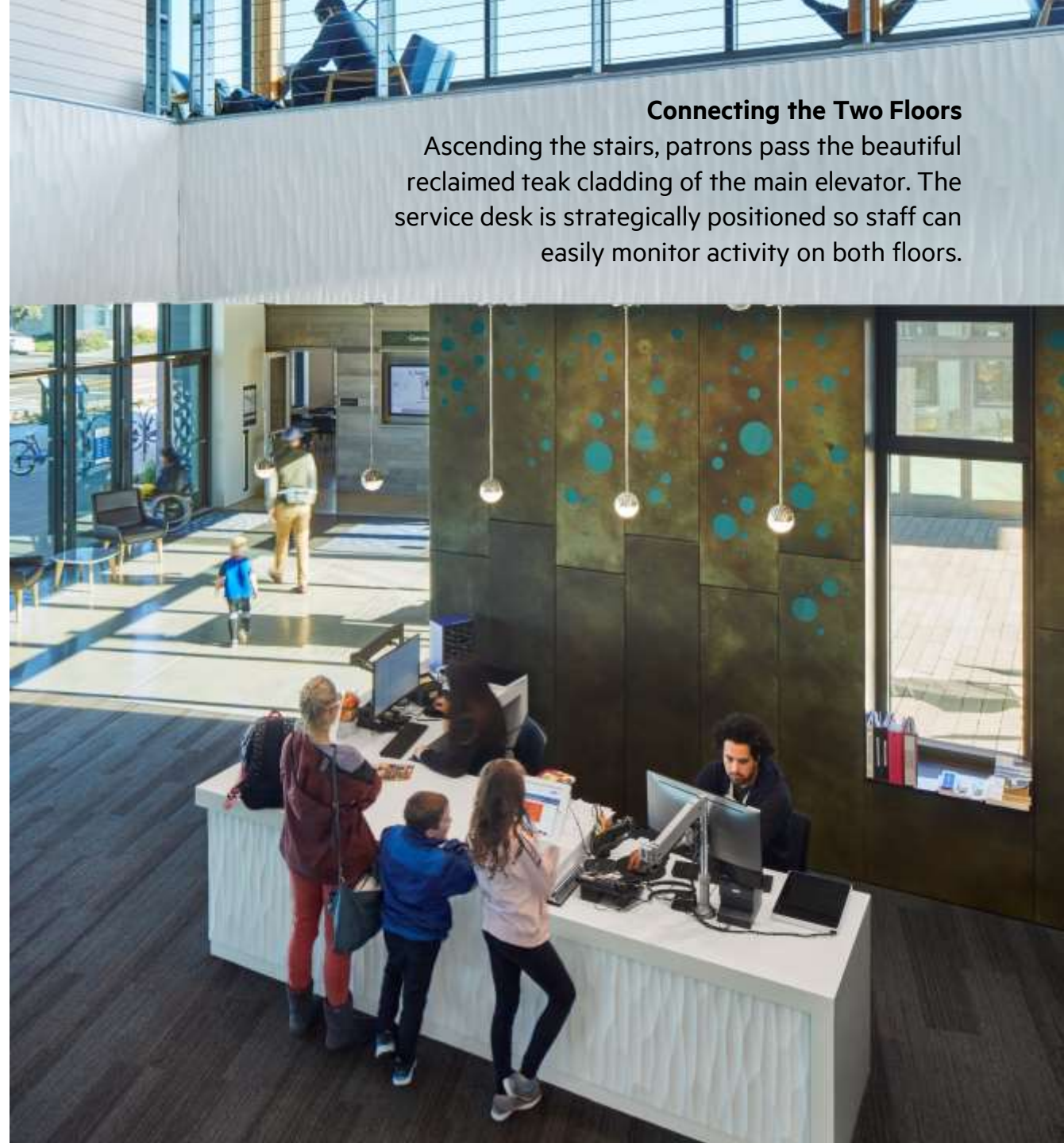
A Space for the Community to Gather

The large community/program room seats 130 people, or can be split using an operable partition, or even opened to the courtyard for large events.



Second Floor Plan





Connecting the Two Floors

Ascending the stairs, patrons pass the beautiful reclaimed teak cladding of the main elevator. The service desk is strategically positioned so staff can easily monitor activity on both floors.



A Light-Filled Reading Room

The dramatic wood and metal composite structure of the roof is exposed to create a grand room that looks towards the Pacific Ocean. The king-post trusses and tie-rods are evocative of the rigging of a ship, and natural materials such as patinated copper, reclaimed wood, and rough stone are articulated with clean and contemporary detailing.





Second Floor Adult Collections & Seating



Second Floor Adult Collections & Seating

A Peaceful Place to Read

The quiet reading room offers an intimate and acoustically separate space for reading and individual work.





Integrating Tinkering and Chill

With flexible furniture that can be reconfigured, the teen room has a direct view of the green roof and access to the makerspace.



Designed for Efficient Staffing

The library's organization was developed in close consultation with library staff to maximize efficiency. The library tripled in size, but is supported by a similar number of staff. The open design provides excellent visibility to all areas of the building. The staff workspace is well organized for a productive work environment.



Makerspace Activities for all ages



Makerspace Activities for all ages





HALF MOON BAY LIBRARY

CAE INFORMAL
LEARNING
SUBCOMMITTEE

CHRIS NOLL, FAIA
PRINCIPAL

**NOLL
& TAM**
ARCHITECTS