

MAGGIE'S CENTRE BARTS

London, United Kingdom



SQ FT  
6534 BGSF



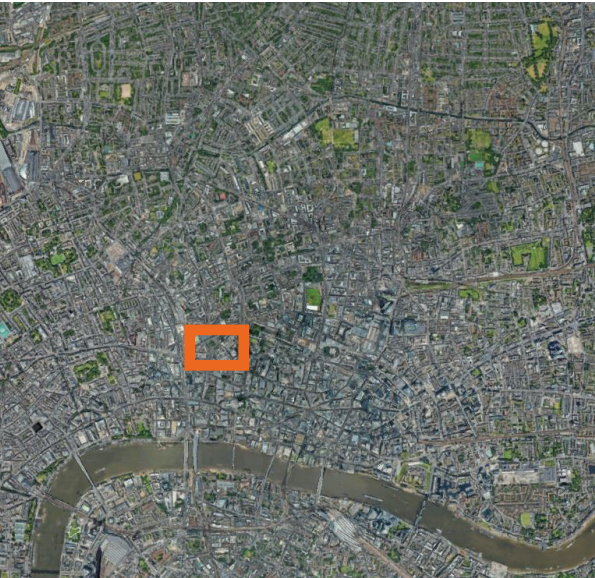
OWNER/AFFILIATION  
Maggie Keswick  
Jencks Cancer Caring  
Centres Trust



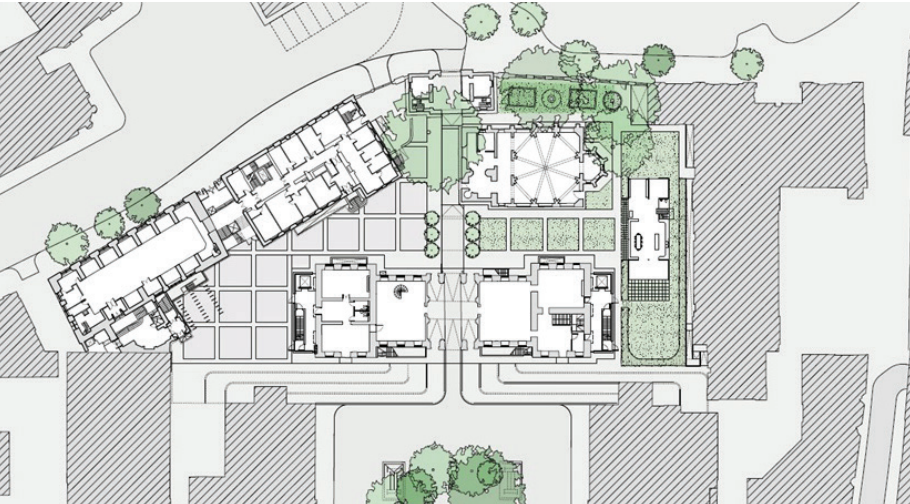
ARCHITECT(S)  
Steven Holl  
Architects



COMPLETION DATE  
2017



LOCATION



Site Plan



SITE MAP

ABOUT | DESIGN INTENTIONS

The site in the center of London is adjacent to the large courtyard of **St Bartholomew's Hospital**. Founded in Smithfield in the 12th century, the hospital is the oldest in London and was founded at the same time as the St Bartholomew the Great Church in 1123. Rahere founded the church and hospital "for the restoration of poor men." Layers of history characterize this unique site, connecting deeply to the **Medieval culture of London**.

