

2



8



THE DECLINE

2030



Terrible air quality



Extreme weather patterns and more disasters



Less fertile farming land and **large decrease** in resources

AI TAKEOVER

2040



Technology **fully integrated** in all aspects of life



Artificial Intelligence **controls and monitors** all resources



Artificial Intelligence mitigates further damage to climate.

CONSEQUENCES

2050



Sea levels have risen two feet



10 of Millions displaced due to climate change



Denser cities, minimalistic lifestyle, and a **decline** in economy

FROM 2030 TO 2050
The start to...

ECOLOGY OF 2080

IN THE NEWS

Newly Elected 2020 President Kanye West Calling for Clean Energy

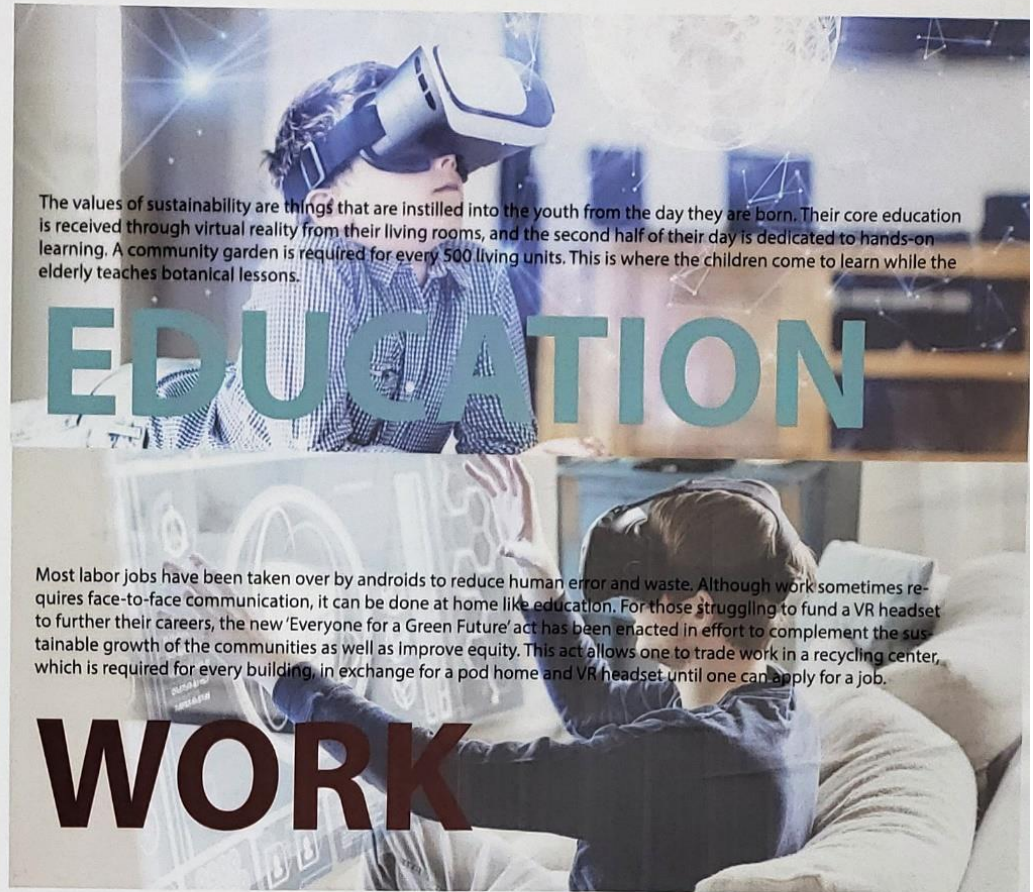
January 21, 2021 by Sow A. Rouse

Introducing SaRah, the New Robot Therapist

January 13, 2028 by Harman Ising

Introducing the First Fully VR-Immersed High School

June 7, 2033 by Ivan Idea



The values of sustainability are things that are instilled into the youth from the day they are born. Their core education is received through virtual reality from their living rooms, and the second half of their day is dedicated to hands-on learning. A community garden is required for every 500 living units. This is where the children come to learn while the elderly teaches botanical lessons.

EDUCATION

Most labor jobs have been taken over by androids to reduce human error and waste. Although work sometimes requires face-to-face communication, it can be done at home like education. For those struggling to fund a VR headset to further their careers, the new 'Everyone for a Green Future' act has been enacted in effort to complement the sustainable growth of the communities as well as improve equity. This act allows one to trade work in a recycling center, which is required for every building, in exchange for a pod home and VR headset until one can apply for a job.

WORK

United States Calls for Universal Gene Editing Healthcare

November 1, 2039 by Aime Deutsche-Bhag

Companies Are Phasing Out Fossil Fuels to Convert Fully to Renewable Energy

May 30, 2041 by Harry Utzle

Self-Driving Public Transit Soon Be Implemented

October 30, 2041 by Holly Luya

Genetically-Edited, Fast-Growing and Nutritious Tomato Seeds Now Hit the Market

August 3, 2055 by Keapen Laffin

Diagnosis Tool Inside Human Bodies

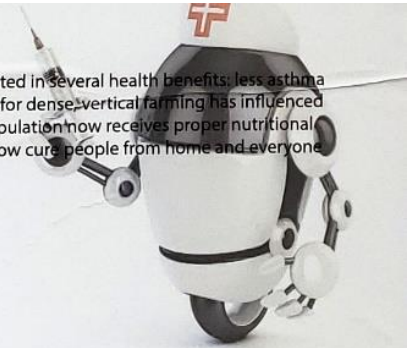
March 26, 2068 by Winston Misry



SCAN BARCODE TO READ THE ARTICLES

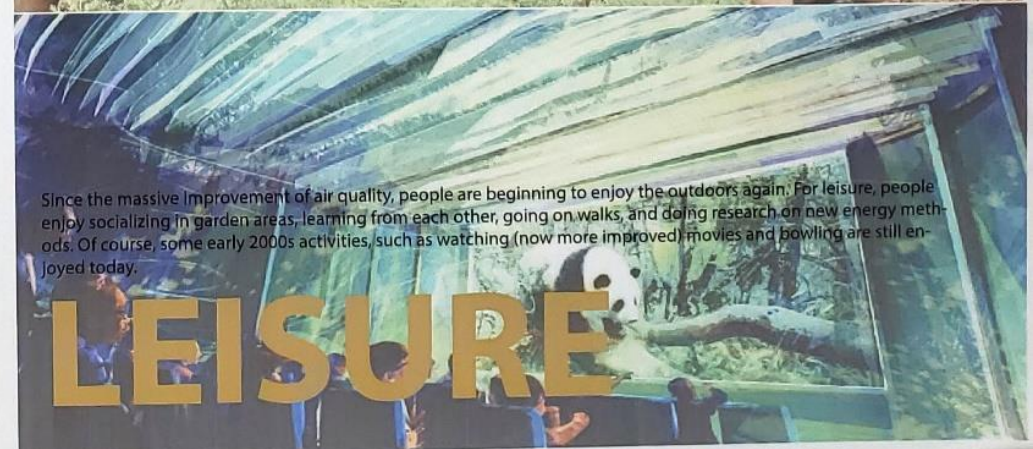
Today's air matches the air quality from pre-industrial times, which has resulted in several health benefits: less asthma occurrences, more on-foot travels, and more outdoor interactions. The push for dense, vertical farming has influenced scientists to find ways to make food more nutrient dense and 87% of the population now receives proper nutritional needs. Innovations in hospital care have improved as well. Nano chips can now cure people from home and everyone has quick and easy access to a physician with VR.

HEALTH



Thanks to android therapist SaRah, there is more social and outdoor engagement. There were several concerns among the population that social interactions would decline with the rise of technology and lack of physical workplaces, but the opposite has occurred. Now that people commute less, there are more gathering spaces which has created a sense of community among most dense living spaces. This has also created an opportunity for intergenerational interactions, which, in turn, provide the elderly a lot of care from the community as they age.

SOCIAL



Since the massive improvement of air quality, people are beginning to enjoy the outdoors again. For leisure, people enjoy socializing in garden areas, learning from each other, going on walks, and doing research on new energy methods. Of course, some early 2000s activities, such as watching (now more improved) movies and bowling are still enjoyed today.

LEISURE



Plan View | NTS



Elevation | NTS

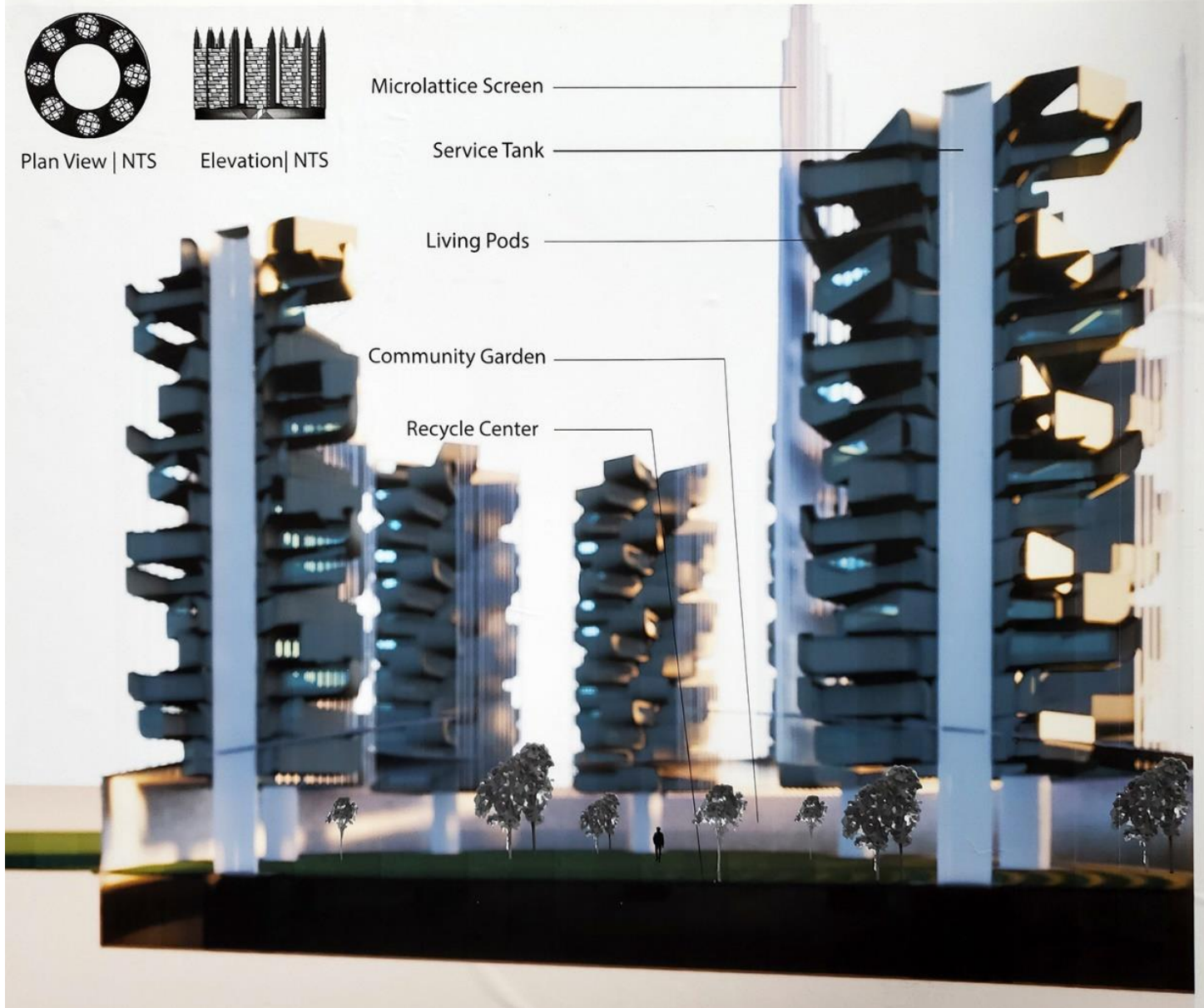
Microlattice Screen

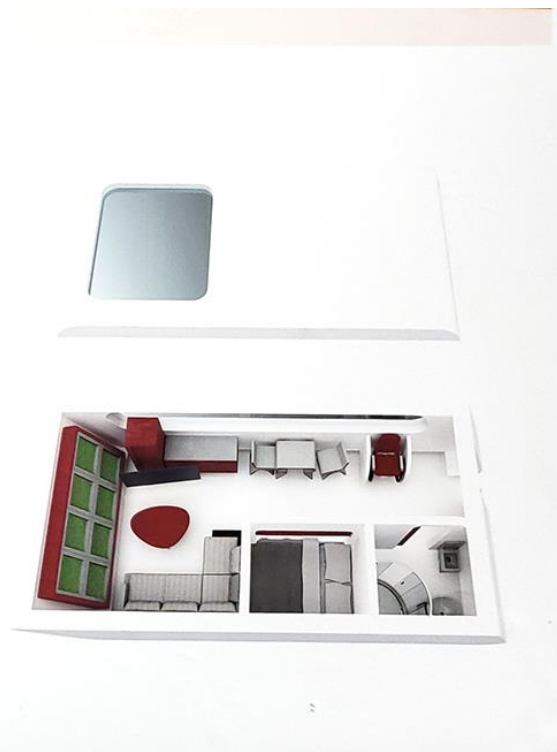
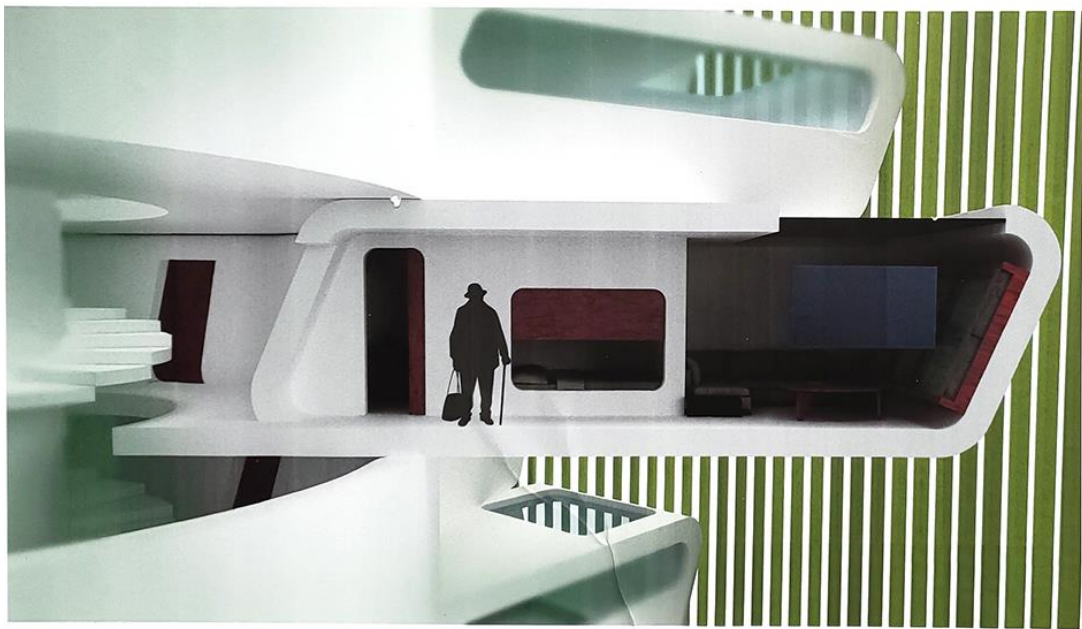
Service Tank

Living Pods

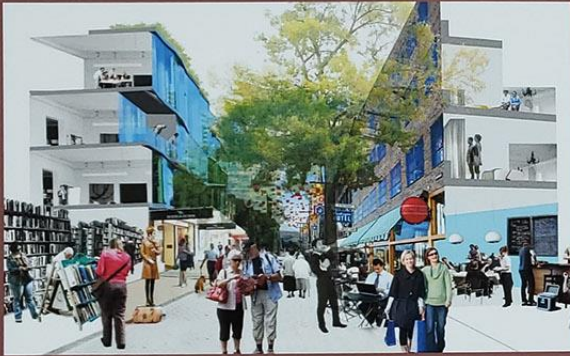
Community Garden

Recycle Center





MANIFESTO OF 2080



After the hell of the past 40 years, we now exist in a **peaceful society with a strong commitment to culture**. This is evident through our gathering around different trades and diverse communities. Neighborhoods are self sufficient and resources are never too far away. Neighborhoods also situate themselves around similar trades as a way to pool resources. It becomes quite common to recognize the painters quarter or the masons, as each neighborhood has its own **character**. This is defined by the people and returns the city to **the human scale**, meeting human needs.



With this new arrangement of society, we have a **prosperous trade economy**, accessible to all! Technology and jobs requiring higher education still exist, and if you want to pursue that, go for it! However, we have a **strong respect for experience**. Now it is much more common and much more desirable to learn from those with that experience. With our longer lives and better health, we have a better grasp on life and learn to develop a strong commitment to it. Our elders have a lot to share with us, and we definitely do not take that for granted.

Welcome to the New World

Technology and AI is still very important to us. We have not forgotten it or gotten rid of it. However, **we do not conform to it**. We retain who we are and remain humane through the rejection of this technology and the belittling of its power over us. It helps us with the day to day and supports us with communication and work. However, we in no way answer to it. **We have control over it**. We value that which it cannot do, or that which has **value in doing it ourselves**.



The lifestyle of today is still very simple. Deciding to learn from the errors of our past, we still maintain the **minimal lifestyle** started in the 2040s. We express ourselves through that which we do, **not** what we own. Because of this, our homes are much smaller and we have denser communities. Thus most if not all activity happens with each other. **We learn to develop our communities together so that we can continue into the future better than ever before**.

SHIFT IN CULTURE



Those in positions of power emphasize what it means to be human and end the control of AI.

The movement **Preserve Our Humanity** finally gained control in the political sphere in 2070. It was led by craftsman, the middle class, the lower class, and the educated; following the dogma of ethics and equity. Their primary goal, that they achieved through the use of legislation, was the limitation of AI. This drastically enforced the already changing social and cultural landscapes, around a strongly emphasized definition of humanity.



AI technology doesn't have to be the thing we idolize or the thing we dread, it will be what we tell it to be.

AI was limited to what it was allowed to do. It was permitted to exist because the world became so connected with it and required it to survive. However, it was not allowed to manipulate or control human behavior or be implanted in human physiology. It was always the subordinate and seen as something lesser than humanity.



An economy that anybody could become a part of, regardless of education or experience.

Another major platform of this movement was the solidification of the trade economy. They were frustrated with the economic gap. Jobs were being taken by technology and there was a need to find a way to contribute and also have a way to obtain goods. A major blame was placed on the capitalist structure and the idealization of technology, so the economy became much more open for trade and the informal market.

MOVEMENT FOR HUMANITY

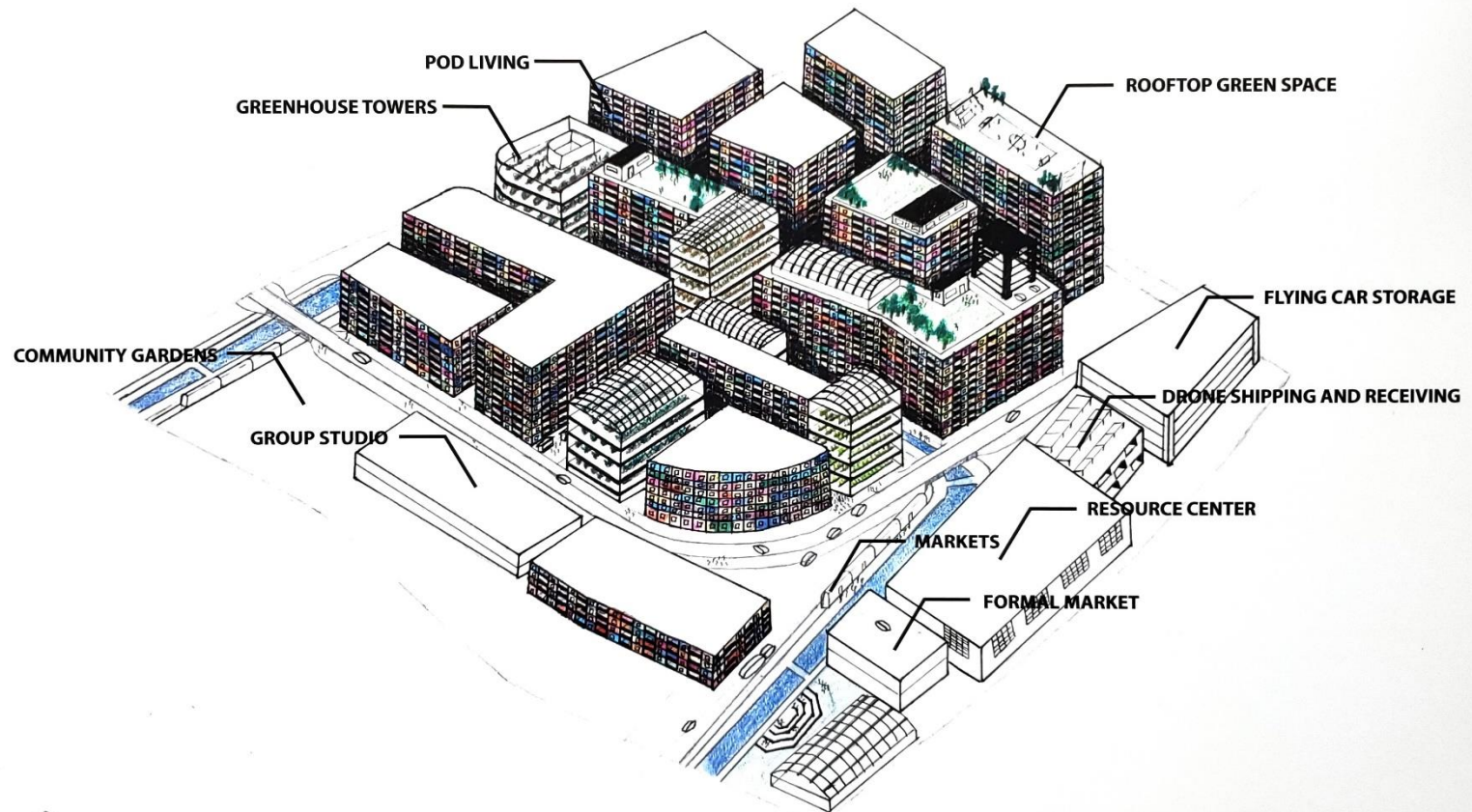


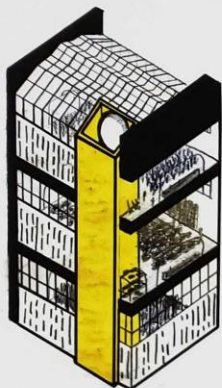
The 60s were perhaps the most tumultuous time in the past 40 years. After the climate refugee crisis, environmental crisis, the densification of cities, and the take off of technological advancement, there was a **need for a new kind of life**. Living conditions were low because of the shuffle of people and the slow growth of cities. Technology, with the help of AI, gained a lot of control over people's lives. It may have been more efficient and perhaps even necessary for survival, however with the culture shift it was **no longer a necessity, just oppressive**. People understood what it took to live a healthy life, that respected what we had, and mourned for the damage we caused. Therefore, instead of technology controlling everything, people found it necessary to stand up for humanity and trust that people could continue living without the total control of technology.

Riots began, new parties started, and change was on the horizon. There were demands for better living, a new kind of economy, and perhaps a new culture all together. The **Preserve Our Humanity** movement gained the most traction at the time. It supported those most afflicted by every crisis and was one of the most radical. People believed that it was necessary to actually help to create a society where **life was worth living**. A lot of the platforms it took were already being seen in the daily life of people. Informal markets were growing and neighborhoods relied on each other in a large network to survive. This movement wanted to respect that growth, return to humane treatment, and overall solidify society around **what it means to be human**.

PRESERVE OUR HUMANITY

Allison Pulsipher and Trayce Webb





GREENHOUSE TOWERS

- Advancements in technology allows for greenhouses to essentially stack on top of one another.
- These attach to large residential complexes to provide food that is too expensive to obtain otherwise.
- A place where technology is allowed to supplement the growth of plants, increasing production rates.



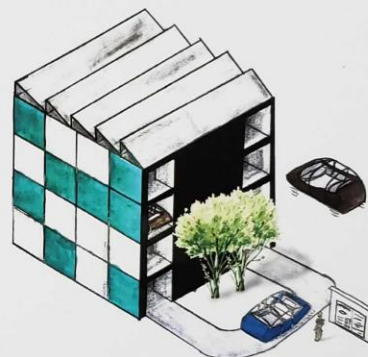
GROUP STUDIO

- The primary education center where people go to learn craft.
- Respect is given to those with experience as they become the teachers and mentors.
- Education is more individualized through the mentor-student relationship.
- Access to production equipment.



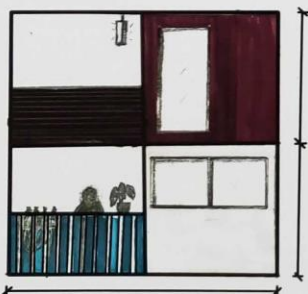
ACCESS TO THE SKY

- With denser cities, green space moves to building rooftops.
- Leisure and sport moves to these areas as they have the most light and open space.
- Where work and trade have taken over the ground, it is necessary to provide relief away from the everyday.
- A way to create breathable air.



MASS RIDE-SHARE SYSTEM

- Most people do not own their own vehicles.
- Access to other communities and travel is necessary, so these stations are placed everywhere.
- The flying car is the standard way to travel.
- These stations charge the vehicles and take up a small footprint.



DENSE LIVING

- Climate refugees and increase in population growth requires dense living.
- Each pod gets access to open space (deck/patio) for comfort and human right to light.
- Each pod consists of what is required for living as life exists outside the home.



MARKETS AND RESOURCES

- Markets, business, and activity invade the streets.
- Markets are the main source of economic activity as they are more accessible and the place value on the one of a kind.
- Resources are distributed through resources centers that seek to supplement this trade economy.

STAGES OF LIFE

Childhood

At birth, early genetic testing is performed for health purposes. During this stage, genetic diseases are found and a preventative care life plan is put in place.

0 - 10

Career Path 1.0

Begin predetermined career based on results from adolescence testing. This stage is focused on developing knowledge and skill sets in areas of greatest potential.

18 - 50

Career Path 2.0

Start second career based on interests and discoveries developed during self discovery period. This is a career of choice in an area of intrigue and enjoyment

50 - 80

80 +

Adolescence

Genetic and physical testing is conducted to determine one's talents and potential. Education begins to be individually catered towards future career path 1.0

Self Discovery

Between age 40-60, Career Path 1.0 ends. Time is now focused on the individual and spent exploring interests and hobbies and finding purpose and meaning in life.

Retirement

Retirement age is meant to be enjoyed. Time is spent doing what you love with the people that you love. Social engagement is a large focus during this stage.

3 ESSENTIAL ANCHORS OF EVERYDAY LIFE



GENETICS



PHYSICAL HEALTH



MENTAL HEALTH

EDUCATION

Education during childhood is focused on social and life lessons. During adolescence, testing is performed to determine one's potential. Based on the results, an individually focused education is given to guide and prepare for predetermined career path. Education is continual throughout life.



LEISURE

Leisure time is an extremely important aspect to both mental and physical health. Free time is dedicated to hobbies and interests. Time away from technology is critical to maintaining a healthy balance. Leisure is especially important in self discovery phase in realizing one's self. Activities are chosen based on intrigue.



JOB

Individuals experience two separate careers during their lifetime. The first career is determined by testing done in adolescence that determine one's talents and potential. The second career is based on an individual's passions and interests that they explore and develop during self discovery.



MEDICINE

Medicine is centered on preventative care. Genetics are tested at birth to determine risks and a life care plan is created. Technology monitors bodies internal systems at all times and alerts immediately with any anomaly. When extra care is needed, a pop-up clinic is delivered to home to address needs.



PHYSICAL WELLNESS

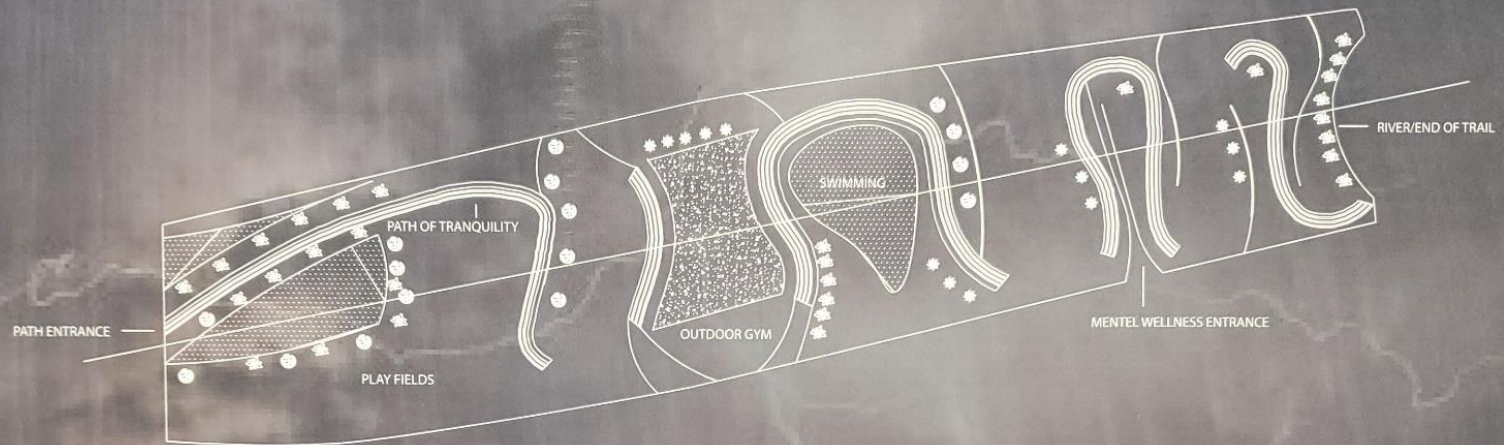
Individuals each have personal trainers who plan and develop a schedule for optimum physical wellbeing. Wellness Centers are essential social institutions spread throughout the community. Time is spent daily at wellness center working on goals to develop and maintain one's optimum health.



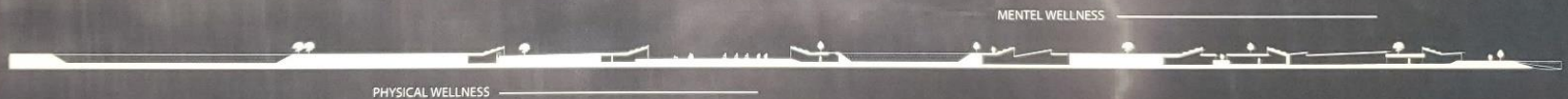
MENTAL WELLNESS

Personal life coaches prepare individuals for happy and successful lives. Diet and schedule reflects individual's personal needs to maintain emotional balance. Time is focused daily on self care and personal development. Hobbies and interests play a large role in everyday life. Activities are centered on personal happiness.





SITE PLAN
SCALE: 1/96" = 1' - 0"



SITE SECTION
SCALE: 1/96" = 1' - 0"



2080 WELLNESS CENTER

2080

FIND YOUR TRIBE
**SOCIETY-
CENTERED
APPROACH**

TYLER WALLACE | CODY WITHAM | University of Utah | CA+P | ARCH 4011 | Spring 2019

2060 - Communal living, brought on by the minimal living changes of the '40s, is the dominate form of housing. Because AI replaced the workforce, people's basic needs are met and they have ample leisure time to pursue interests. People live in communal groups of similar interests. AI technology, Augmented Reality, and the 'Internet of Things' created a dynamic learning environment for our children. Physical schools are still common, where children develop their social skills through extra-curricular activities.

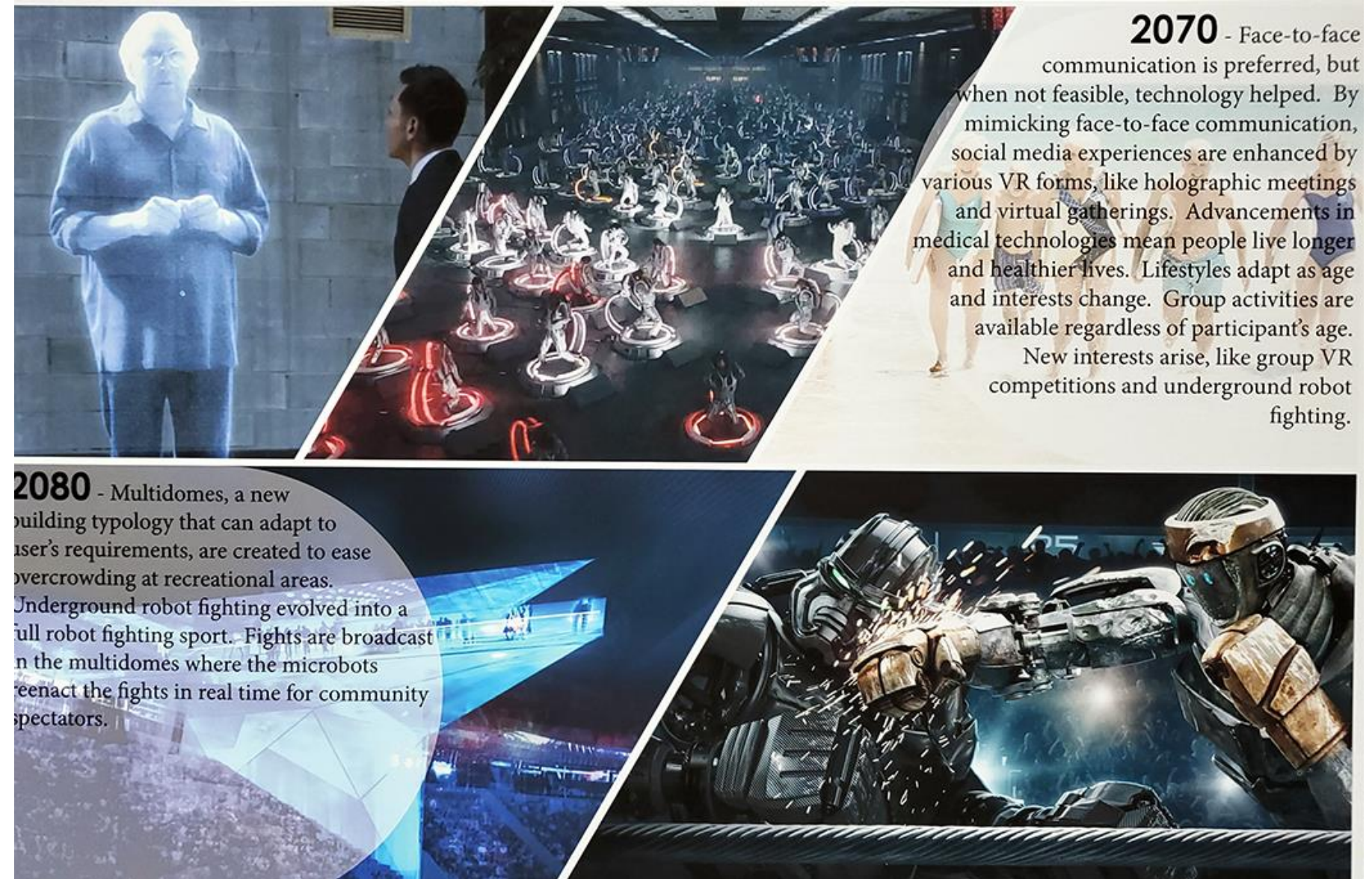


2070

- Face-to-face communication is preferred, but when not feasible, technology helped. By mimicking face-to-face communication, social media experiences are enhanced by various VR forms, like holographic meetings and virtual gatherings. Advancements in medical technologies mean people live longer and healthier lives. Lifestyles adapt as age and interests change. Group activities are available regardless of participant's age. New interests arise, like group VR competitions and underground robot fighting.

2080

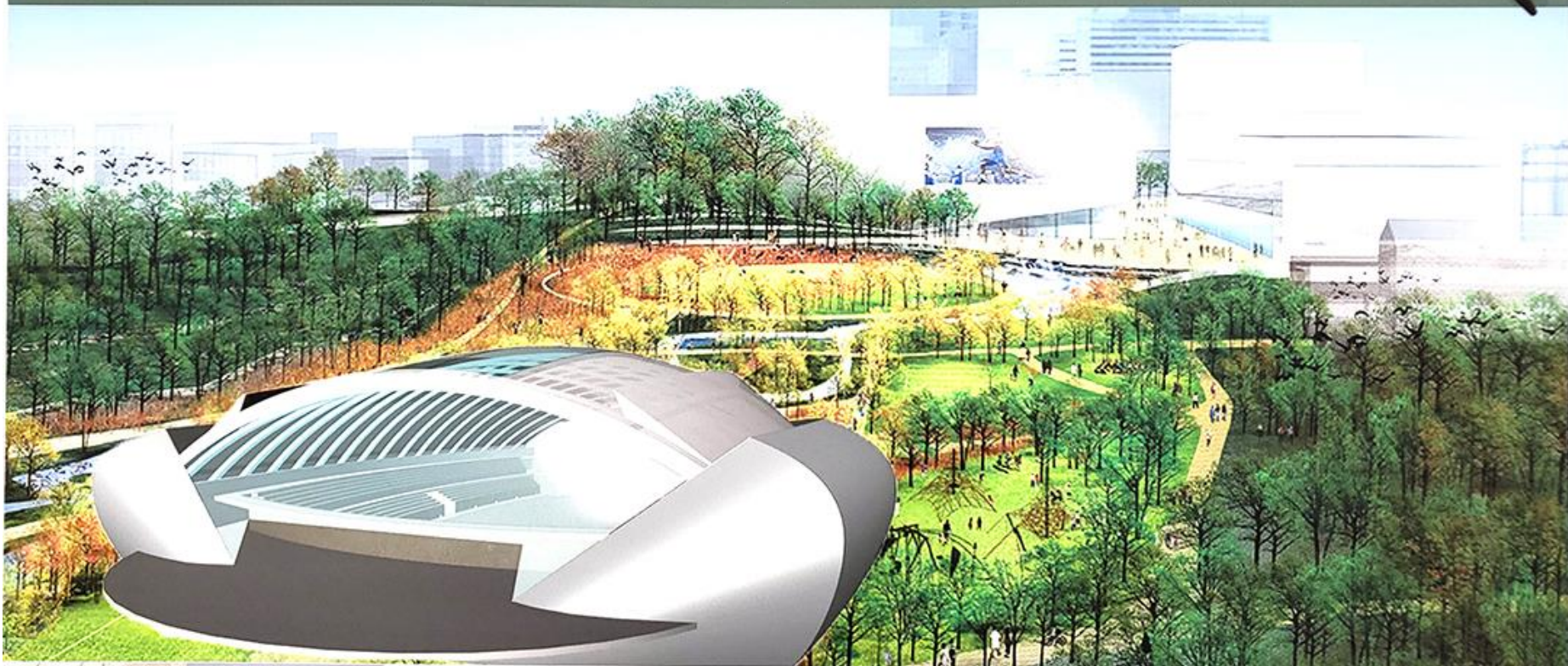
- Multidomes, a new building typology that can adapt to user's requirements, are created to ease overcrowding at recreational areas. Underground robot fighting evolved into a full robot fighting sport. Fights are broadcast in the multidomes where the microbots reenact the fights in real time for community spectators.



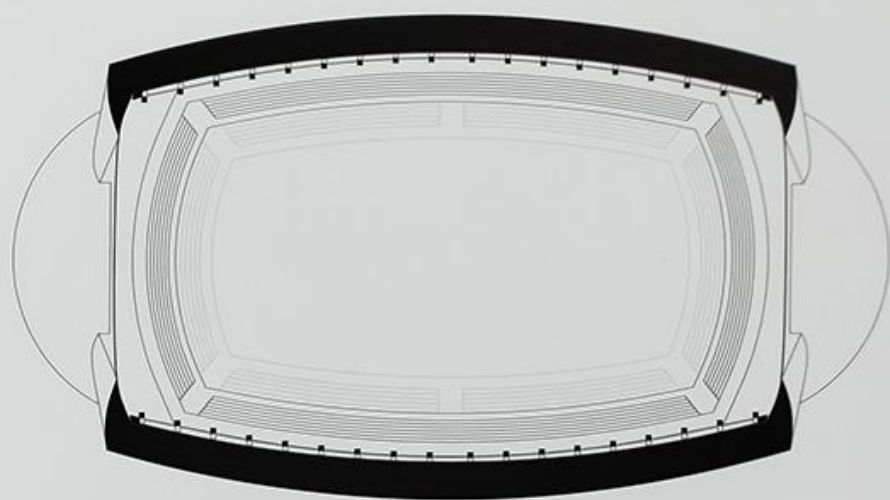
"THE SHIFT"

MULTIDOME

TYLER WALLACE | CODY WITHAM | University of Utah | CA+P | ARCH 4011 | Spring 2019

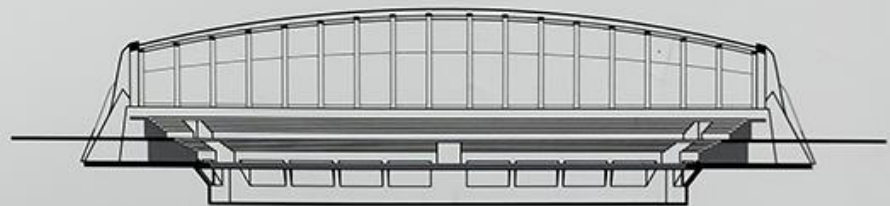


"The Shift" is a new building typology called a multidome. The building is meant to facilitate the use of many functions within it. Physical activities range from things like surfing, rock climbing, paintball, parkour, obstacle courses, dancing, most sports, and many others. If entertainment is more your thing, multidomes can host things like concerts, theatrical plays, ballet, historical reenactments, escape rooms, and robot fight live broadcasts. The key to the adaptability of the multidome is the advances in nanobot technology. A reservoir of microbots is located under the main 'playing field' with access ducts that lead up and out from under the stands for the microbots to gather on the field. Controlled by the multidome AI, the microbots are capable of creating any environment that is needed, based on user programs and inputs. For example, it will mimic the waves of the ocean so people can surf, become a never-ending cliff for rock climbing, construct obstacles for parkour running, or a stage for community concerts. These are just some ideas of what the multidome can do, the options are only limited by your creativity.



PLAN

Scale | 1"=64'



SECTION

Scale | 1"=64'

TECHNOLOGY OF 2080

THE WORLD OF ARTIFICIAL INTELLIGENCE

Aaron Romney &
Connor Morgan

Hello. My name is cAiron, your personal artificial intelligence. How may I be of service to you?



CLIMATE CHANGE CONCERNS

Temperature: 61° F CO2 Levels: 280 ppm
Precipitation: 80% chance Air Quality Index: 41 (Green)

A gloomy day ahead of you unfortunately, but the air conditions are nice, so you should be able to breathe easy.

Hey cAiron, what is the weather like today?



LEISURE, ENTERTAINMENT & EXERCISE

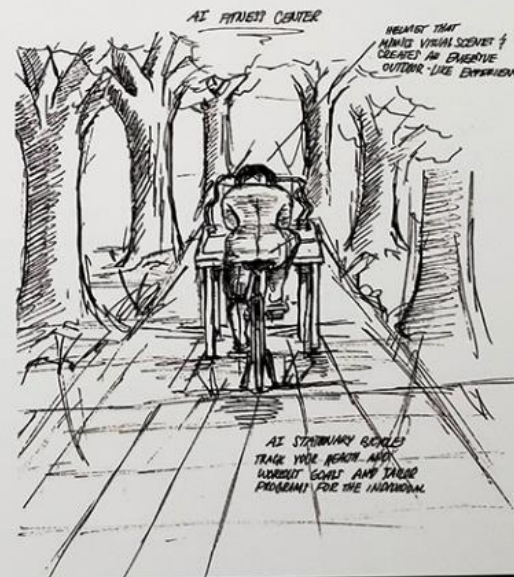
Bored are we? Here are some suggestions based on your interests...

VR Gym: Immersive virtual exercise experience including AI health tracking system and various workout scenes with augmented sensory simulation.

Augmented Video Game Experience: Game with friends in a virtual realm, with riveting simulated experiences and life-like interactions.

VR-flix and Chill: Watch your favorite film with your significant other and experience it in an alternate universe in 10 K resolution.

Hey cAiron, what can I do for fun?



LIVING CONDITIONS

I have compiled some of the best housing options available within your price range.

115 sq. ft. Stall Housing with minimalist modular design. Complete with smart surfaces on walls and ceilings and AI assistantship

300 sq. ft. studio apartment with smart kitchen, large smart glass curtain wall and AI self-shading solar facade

170 sq. ft. compact highrise apartment with spectacular views and equipped with exterior flying Super Uber pickup landing.

COMMUNICATION

Good idea to check in with her. I have her contact ready, how would you like me to connect?

AI Holographic Projection: Scan your body to create a virtual representation of yourself mimicking your body language and facial expressions. Perfect for intimate or professional conversations while on the go.

VR Chatroom: Talk face-to-face with your contact in a virtual cyberspace as if in the same room through VR Headset. Provides a more intimate experience for you and your conversation partner.

Hey cAiron, I'm looking for a place to live?



Hey cAiron, I need to talk with my mom.



EDUCATION

I am currently showing that you need to study more before applying yourself into the work field. How may I be of assistance?

Today's studies involve the progression of AI technology in education. As technology advanced there became less of a need for public education. Parents could more easily track the progression of their children through homeschool. Now, all education has been privatized. Robot nannies now track the growth of the new progressive generations. AI has made it easier for individuals to choose what they want to become sooner based on intelligence and genetics.

GOVERNMENT

Through technological advances and riots against human corruption in the government it was decided in 2040 that AI would take over the government. The educational system was next as well as all public or privatized facilities that the government originally controlled. AI created the freedom for individuals to become what they want to become, without concerning about money. AI provided the opportunity for humanity to have jobs based on enjoyment rather than monetary concerns. Thus, making education more of an enjoyment rather than a requirement. I am only able to help provide educational support when wanted.

Hey cAiron, continue my studies for the day.



Hey cAiron, what was the government's point of view on the AI takeover of education?



HEALTH CARE

Examining. Prognosis is a slight strain on your wrist. This has been known to cause excess pain in the hand. Applying support cast. Your medical records show no allergies to any medications. Here are some pills to help with the pain. If your arm continues to hurt and shows no improvement I will send a transport to the nearest clinic. Robots will assist with any surgery for a speedy recovery.

Hey cAiron, I fell and just hurt my hand.



TRANSPORTATION

Presenting the new Super Uber. Auto-transport made easy with options of road and air support. The higher in the air the higher the cost. Please select your form of privatized public transportation: Road, HOV Road, Air 1, Air 2, HOV Air.

I would suggest **Air 2**. It is the fastest lane currently. A Super Uber will be picking you up in 2 minutes. Would you like to take any stops on the way home?

Hey cAiron, please take me home.



No, but could you include in my transport a cup of coffee?

Of course! We will make that happen. Your ride and snacks are now available. Please meet at pick up location.

AGING AND DEPENDENCY

Elderly communities have improved dramatically with the help of robots and prosthetics. Resorts in Buenos Aires, Costa Rica, and Greece provide aging communities spaces to enjoy the remainder of their lives in peace.

The Stall House provides easy transportation of homes internationally. This is especially appealing to aging communities as they can move to any of the resorts listed above with ease.

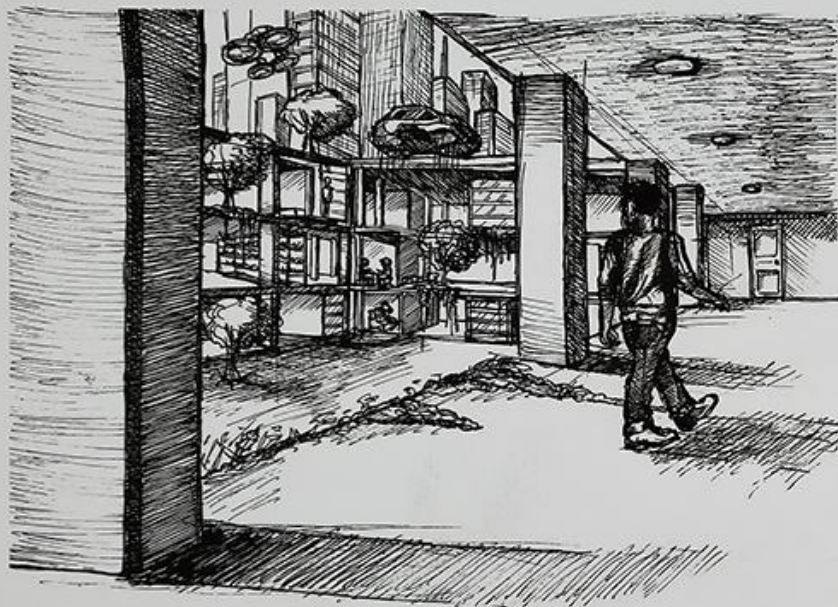
Hey cAiron, when I get old, what's gonna happen?



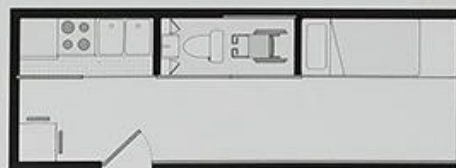
STALL HOUSING

THE SOLUTION TO THE PARKING GARAGE

Aaron Romney &
Connor Morgan



PLAN (CONFIGURATION 1)



HANDICAP SINK ACCESS



PLAN (CONFIGURATION 2)



SMALL WC ROOM
CONVERSION



LONGITUDINAL SECTION



HANDICAP SHOWER
SEAT CONVERSION



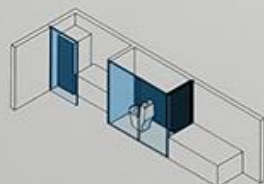
SOFA
CONFIGURATION



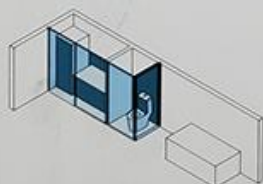
AUTOMATIC
CONVERSION



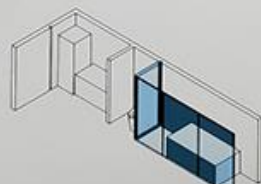
BED
CONFIGURATION



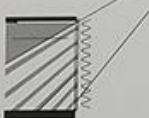
CONFIGURATION 1
(HANDICAP RESTROOM)



CONFIGURATION 2
(SELF-WASHING KITCHEN)



CONFIGURATION 3
(BEDROOM PRIVACY)



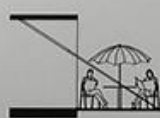
SOLAR PANEL WALL
(PASSIVE HEATING AND PV)



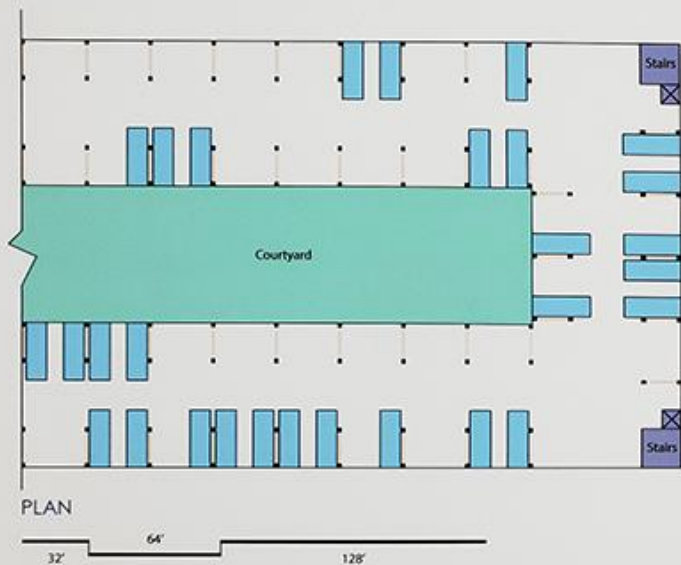
HYDRAULIC WALL
(CONVERTS TO PATIO)



SELF-DRIVING
UBER PICK UP

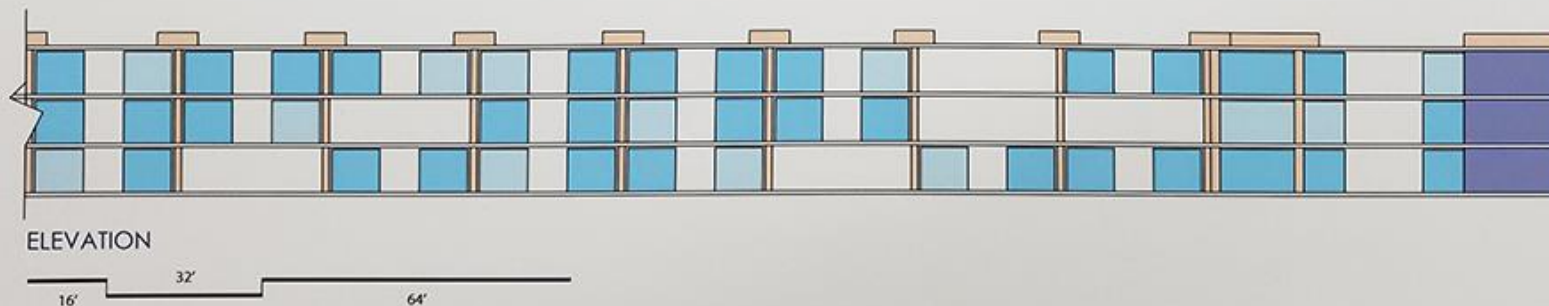


PATIO CONFIGURATION



SPECIFICATIONS

Total Units Per Floor: 152
 Total Floors: 3
 Total Units Per Parking Garage: 456



KEY

- Circulation
- Stall Housing Units
- Courtyard
- HVAC/ Plumbing