

Award-Winning BIM: Lessons Learned from GSA's 3D/4D BIM Program + A Case Study of 2011 AIA BIM Award Winner: Chicago Federal Center

Featuring:

**Stephen Hagan, AIA-TAP, GSA
Charles Matta, GSA
Calvin Kam, AIA-TAP, GSA**

**Peggy Yee, GSA
Bob Mauck, Ghafari Associates
Paul Blanchard, Ghafari Associates**

2011 AIA-TAP Webinar Series

September 09, 2011



Technology in
Architectural Practice
<http://www.aia.org/TAP>

twitter  **#AIATAP**

Email: tap@aia.org

AIA/CES Course Summary

Since 2005, the AIA Technology in Architectural Practice (TAP) Knowledge Community has spearheaded an effort to highlight award winning "best of breed" case studies from the profession in the harnessing of Building Information Model (BIM) technology and processes to further design, construction and project excellence.

This 90 minute webinar will highlight that 7 years of exploration of BIM excellence. An overview of the BIM Awards program, a mention of the upcoming 2012 awards program, a more in depth discussion of the U.S. General Services Administration's 3D/4D BIM program, and a detailed case study of BIM enabled Process Innovation from the 2011 Awards.



Technology in
Architectural Practice
<http://www.aia.org/TAP>

twitter  #AIATAP

Email: tap@aia.org

AIA/CES Learning Objectives

1. Learn the history and evolution of BIM as demonstrated by the past 7 years of the AIA/TAP BIM Awards Program.
2. Learn what public owners are demanding in terms of BIM as demonstrated by process innovation and sustainability enhanced and enabled by BIM.
3. Learn what BIM can and cannot do in the Practice of Architecture illustrated by a case study of a specific public sector complex in Chicago.
4. Learn the current state of practice and reality in both interoperable standards and reliable outcomes using of BIM authoring and analysis tools for the project team members (architect, construction manager, BIM model manager, and constructor).



Technology in
Architectural Practice
<http://www.aia.org/TAP>

twitter  #AIATAP

Email: tap@aia.org

Webinar Schedule

Eastern Daylight Savings Time (EDT)

1:00 - 1:15 pm Welcome

Introduction of the Webinar

Overview of 7 Years of Award Winning BIM

Call for 2012 BIM Awards Submissions

Speakers: Calvin Kam, 2011 TAP Chair

Stephen Hagan, FAIA, GSA, and past TAP Chair

1:15 - 1:35 pm GSA's Award Winning 3D/4D BIM Program Update on New Initiatives and Industry-wide Influence

Speakers: Peggy Yee, GSA

Calvin Kam, GSA + Charles Matta FAIA, GSA

1:35 - 1:45 pm Q&A



Technology in
Architectural Practice
<http://www.aia.org/TAP>

twitter  #AIATAP

Email: tap@aia.org

Webinar Schedule

Eastern Daylight Savings Time (EDT)

1:45 - 2:15 pm 2011 BIM Award Winner
Chicago Federal Center

Speakers: Richard Gee, GSA

Bob Mauck, Ghafari Associates

2:15 - 2:30 pm Q&A + Final Comments



Technology in
Architectural Practice
<http://www.aia.org/TAP>

twitter  #AIATAP

Email: tap@aia.org

2011 TAP Leadership Team



Calvin Kam
2011 chair

David Scheer
2012 chair

Kimon Onuma
2013 chair



Stephen Hagan

Kristine Fallon

Tony Rinella

Active Past Chairs



Brian Skripac

Crystal Wilson

Jeff Ouellette

Karen Kensek

Luciana Burdi

Marty Doscher

Mike Kenig

P  te Evans



Technology in
Architectural Practice
<http://www.aia.org/TAP>

twitter  #AIATAP

Email: tap@aia.org

TAP Upcoming Events

- **September 16, 2011 – Local TAP Discussion Group 1pm EDT**
- **October 07, 2011 – October Webinar**
 - Residential BIM
 - Co-Sponsored with Custom Residential Architects Network (CRAN)
- **November 17, 2011 – 2011 TAP Conference**
 - Faster Forward @ Build Boston
 - Hybrid, multi-venue event, multi-cast to local venues
- **December 05, 2011 – 2011 Building Connections**
- **December 06, 2011 – 2011 EcoBuild**
 - Washington D.C.



Technology in
Architectural Practice
<http://www.aia.org/TAP>

twitter  #AIA TAP

Email: tap@aia.org

Welcome!

Our Agenda Today

Award Winning BIM: 7 Years of AIA TAP BIM Awards and 2012 Call for Submission

Lessons Learned from GSA's 3D/4D BIM Program

+

**A Case Study of 2011 AIA BIM Award Winner:
Chicago Federal Center**



Technology in
Architectural Practice
<http://www.aia.org/TAP>

twitter  #AIATAP

Email: tap@aia.org

Award Winning BIM

speaking: Stephen Hagan FAIA
Calvin Kam, PhD AIA



Technology in
Architectural Practice
<http://www.aia.org/TAP>

twitter  #AIATAP

Email: tap@aia.org

BIM Awards Committee

Mission & Goals

- **Support the Annual the BIM Awards Program**
- **Develop the BIM Awards Program with evolving metrics**
- **Assist BIM Awards Reception**
- **Case studies | publications | tools for BIM information distribution**



Technology in
Architectural Practice
<http://www.aia.org/TAP>

twitter  #AIATAP

Email: tap@aia.org

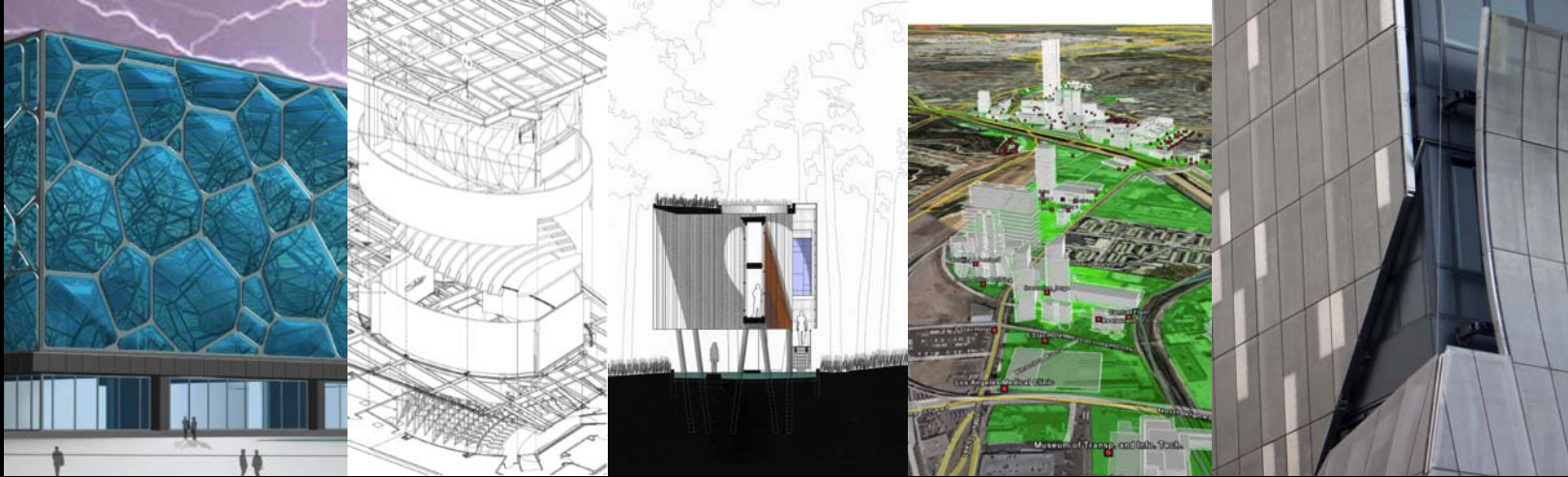
BIM Awards Committee

Timeline

- **7 years of AIA BIM Awards**

Archives at AIA Technology in Practice:

<http://www.aia.org/about/initiatives/AIAS078440>

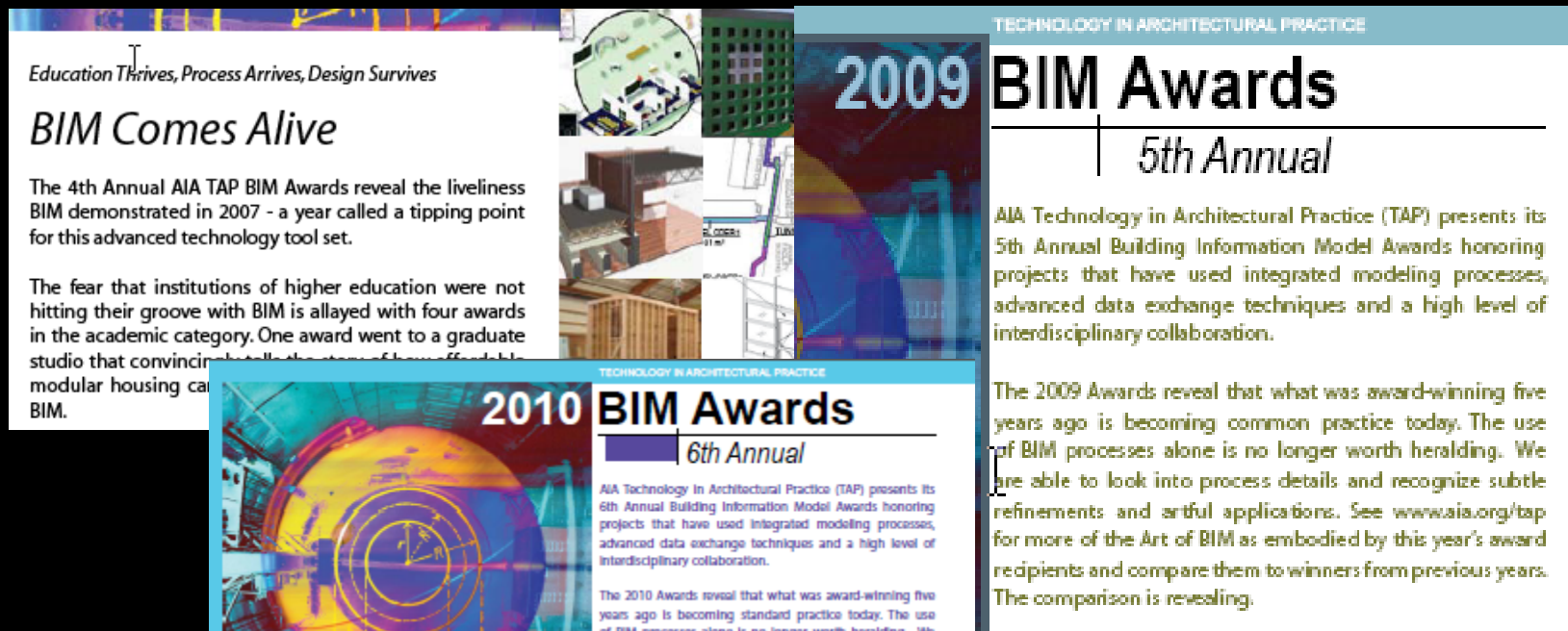


Technology in
Architectural Practice
<http://www.aia.org/TAP>

twitter  #AIATAP

Email: tap@aia.org

BIM Awards 2005-2011

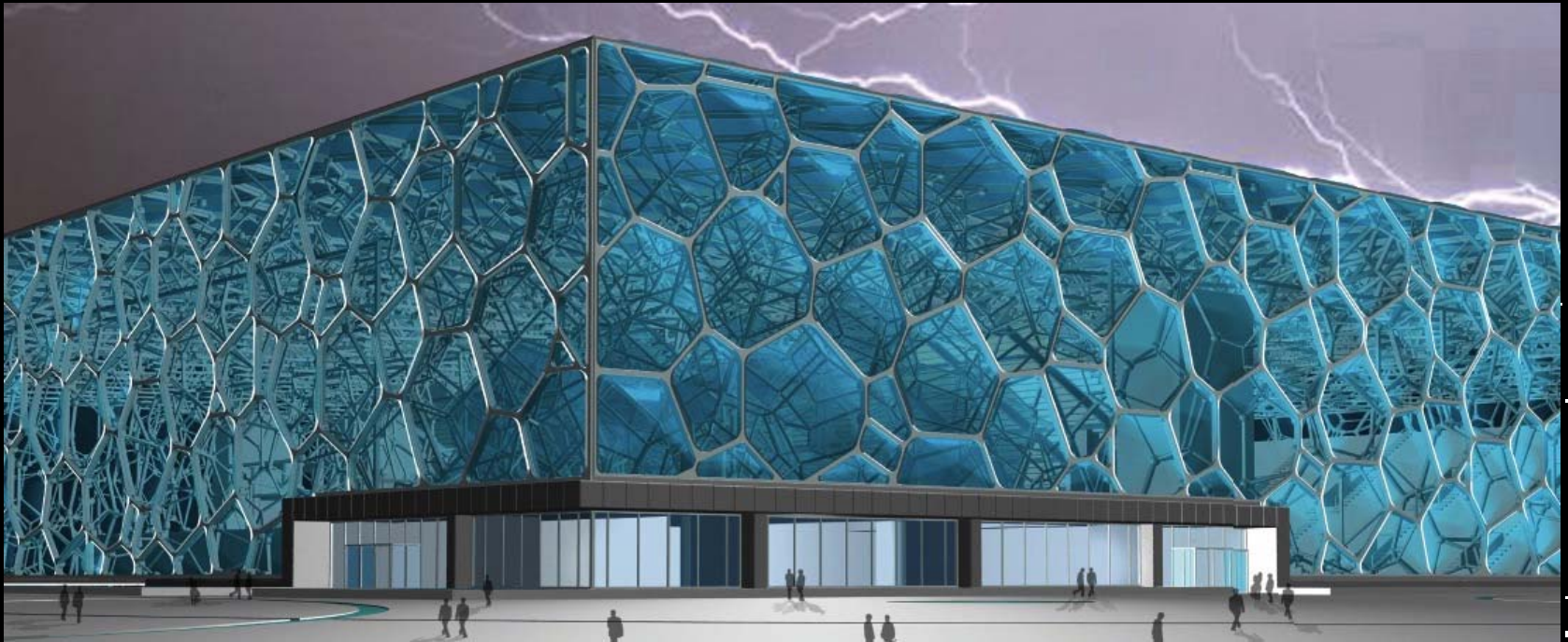


Technology in
Architectural Practice
<http://www.aia.org/TAP>

twitter  #AIATAP

Email: tap@aia.org

Creating Stellar Architecture Using BIM



Technology in
Architectural Practice
<http://www.aia.org/TAP>

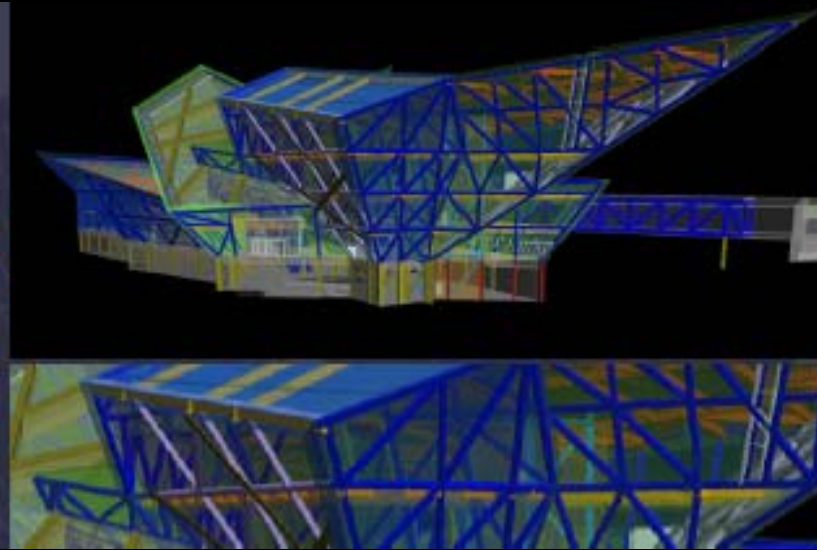
twitter  #AIATAP

Email: tap@aia.org

Creating Stellar Architecture Using BIM



*Fredric C Hamilton Building
Denver Art Museum*



M.A. Mortenson Company

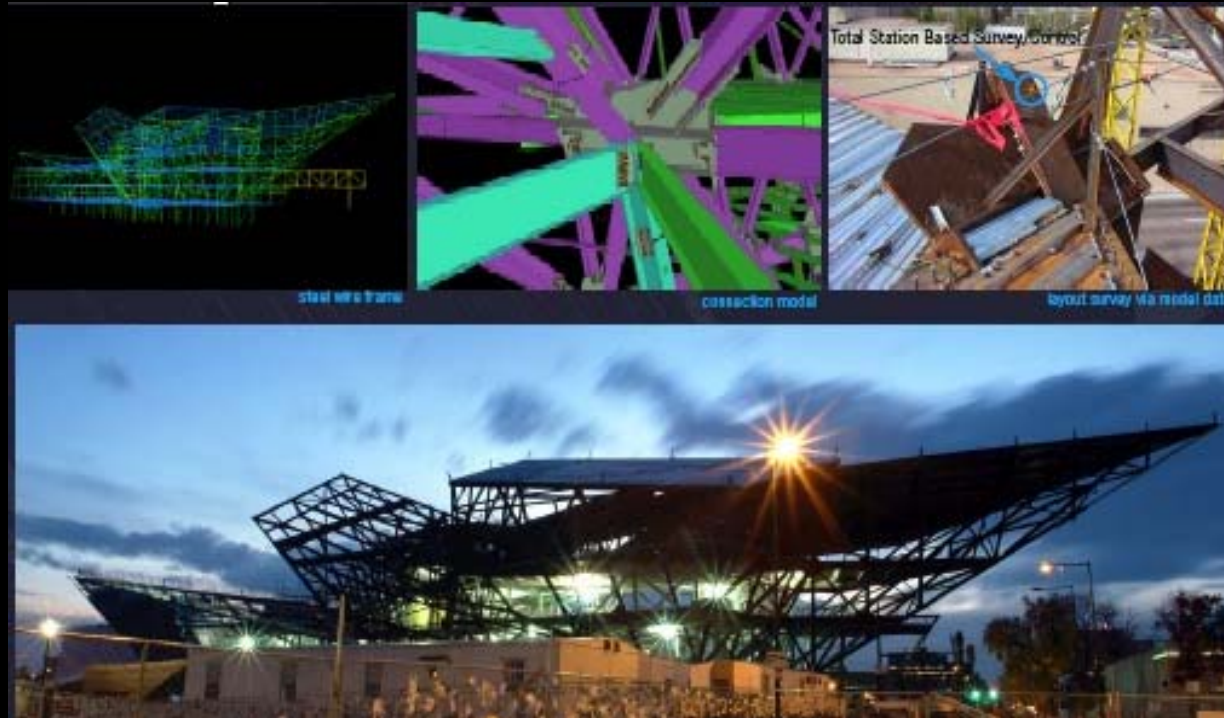


Technology in
Architectural Practice
<http://www.aia.org/TAP>

twitter  #AIATAP

Email: tap@aia.org

Creating Stellar Architecture Using BIM



*Fredric C Hamilton Building
Denver Art Museum*

M.A. Mortenson Company



Technology in
Architectural Practice
<http://www.aia.org/TAP>

twitter  #AIA TAP

Email: tap@aia.org

Creating Stellar Architecture Using BIM



Technology in
Architectural Practice
<http://www.aia.org/TAP>

twitter  #AIATAP

Email: tap@aia.org

Creating Stellar Architecture Using BIM



Technology in
Architectural Practice
<http://www.aia.org/TAP>

twitter  #AIATAP

Email: tap@aia.org

2011 AIA BIM AWARDS



CATEGORY A : BIM EXCELLENCE

- JURY ASSESSMENT OF ARCHITECTURAL QUALITY
- CLEAR USE OF MULTIPLE APPLICATIONS INTEROPERATING TO REALIZE OUTSTANDING DESIGN
- ARCHITECTURAL EXPRESSION THAT COULD NOT HAVE BEEN REALIZED IN OTHER WAYS



Technology in
Architectural Practice
<http://www.aia.org/TAP>

twitter  #AIATAP

Email: tap@aia.org

2011 AIA BIM AWARDS



BIM EXCELLENCE

BIM AWARD CITATION

DC Consolidated Forensic Lab

District of Columbia

HOK



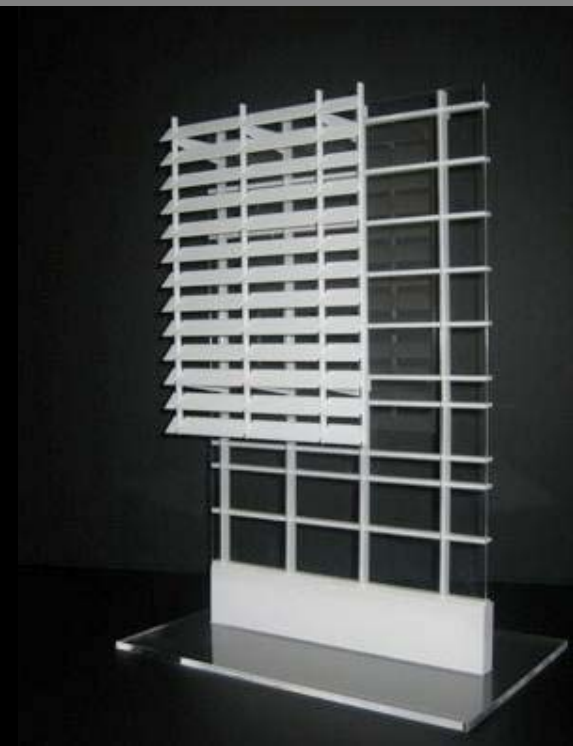
Technology in
Architectural Practice
<http://www.aia.org/TAP>

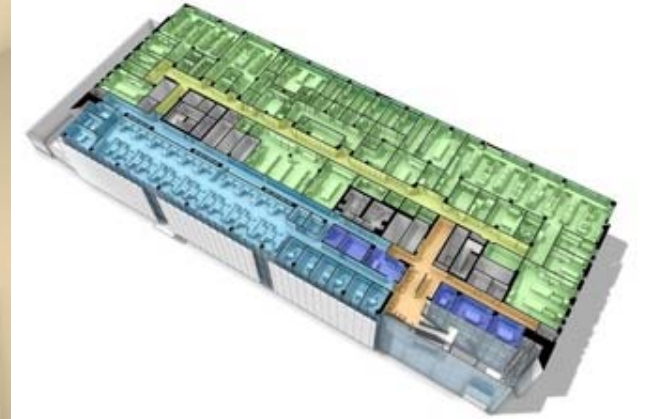
twitter  #AIA TAP

Email: tap@aia.org

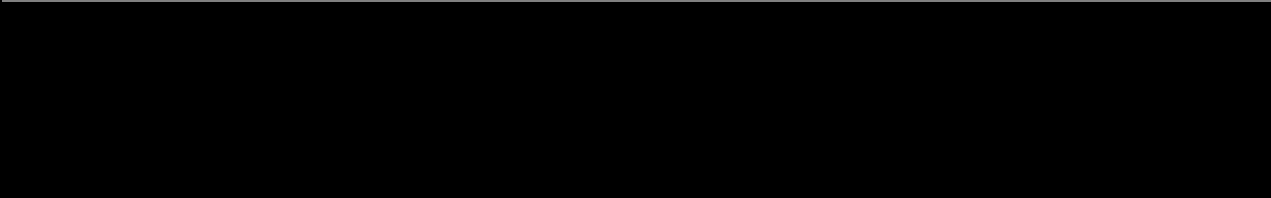


FACADE DESIGN AND INTEGRATION

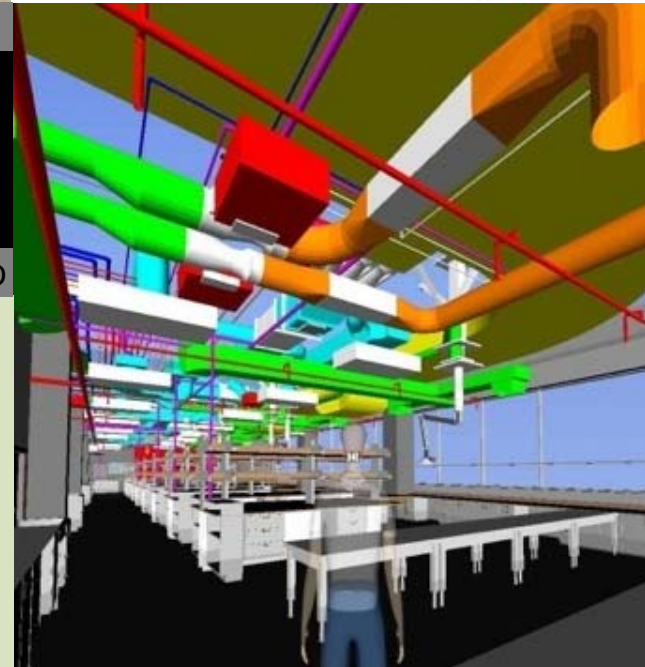
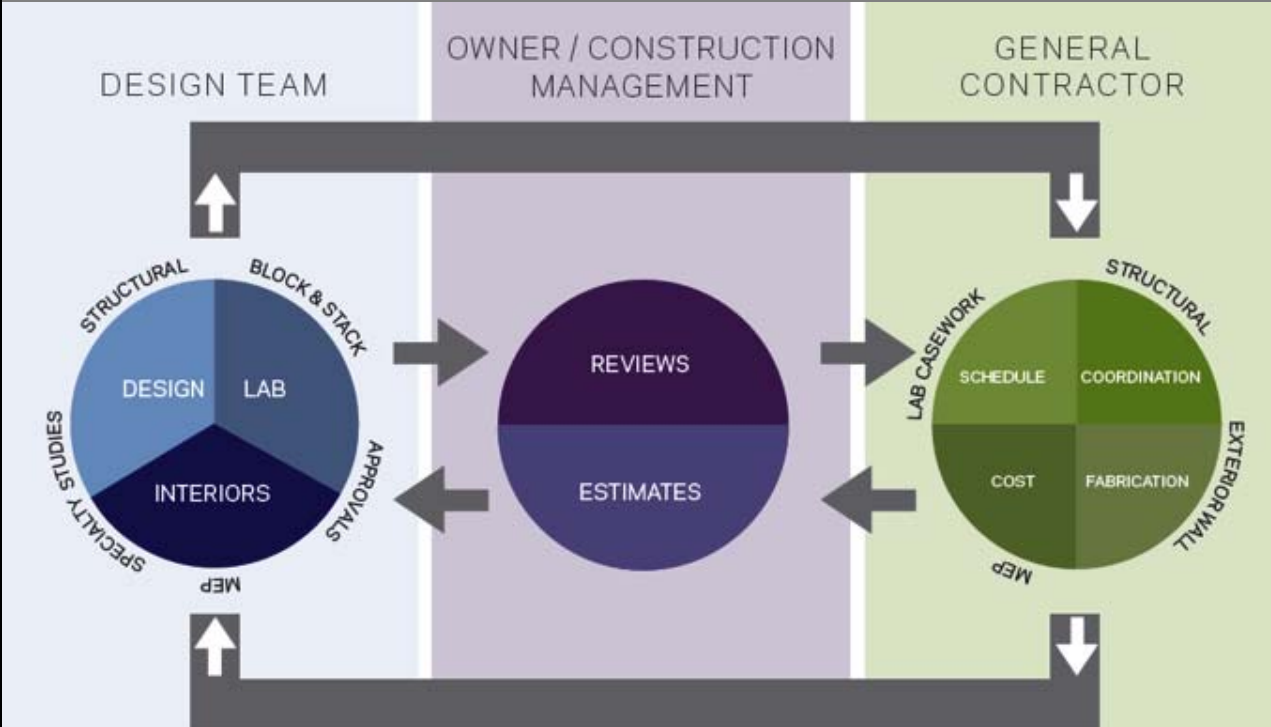


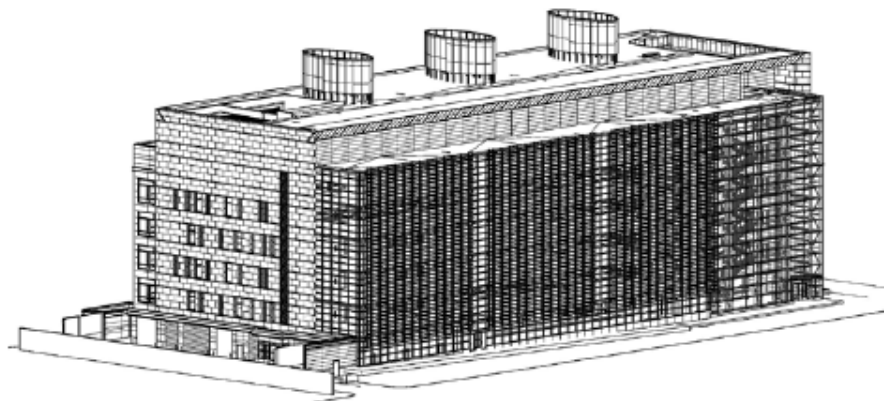


LAB PLANNING AND CONSTRUCTABILITY



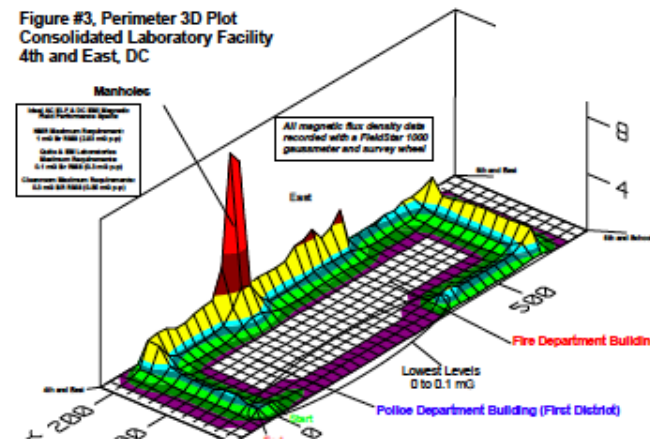
DATA EXCHANGES EMPLOYED



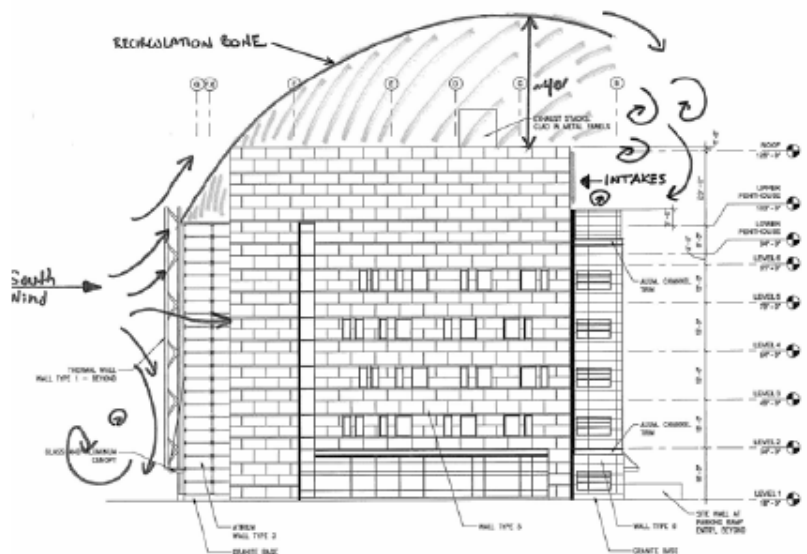


MODEL LOOKING NORTHWEST

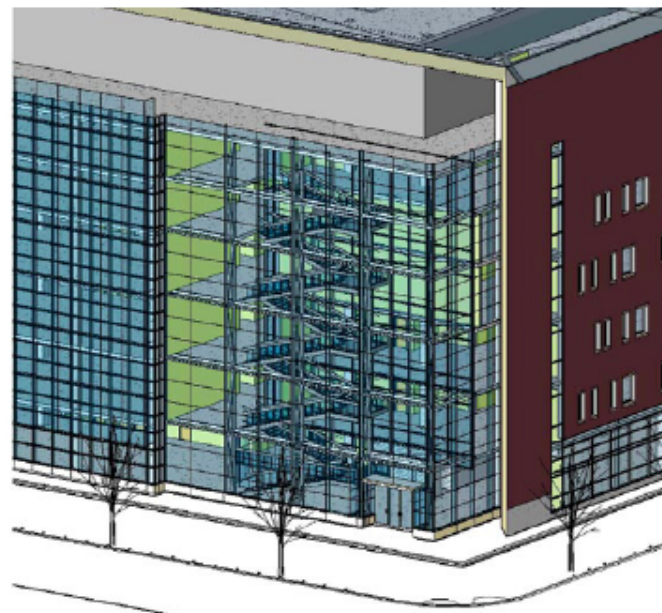
Figure #3, Perimeter 3D Plot
Consolidated Laboratory Facility
4th and East, DC



EMI/RFI



EAST ELEVATION- WIND WAKE



ATRIUM EXHAUST MODEL

BIM Awards Committee

Participants

- **Stephen Hagan, Co-Chair**
- **Marty Doscher, Co-Chair**



Technology in
Architectural Practice
<http://www.aia.org/TAP>

twitter  #AIATAP

Email: tap@aia.org

BIM Awards Committee

Activities - Status

- **In 2011 Expand BIM Awards: AGC BIMForum**
- **For the 2011 Building Information Modeling (BIM) Awards competition, the AIA TAP Knowledge Community seeks projects that have used integrated and interoperable BIM.**
- **Category A: BIM Excellence**
Category B: Delivery Process Innovation (in association with BIMForum, Professional's Choice Award—Owners Choice and COAA added for 2012)
Category C: Outstanding Sustainable Design
Category D: Academic Program / Curriculum Development
Category E: Exemplary use of BIM in a Small Firm



Technology in
Architectural Practice
<http://www.aia.org/TAP>

twitter  #AIA TAP

Email: tap@aia.org

BIM Awards Committee

2011 Jury

**Joseph G. Burns, FAIA - Thornton-Tomasetti Group –
Chicago, IL**

**Luciana Burdi, Ph.D. - State of Massachusetts Office of
Planning, Design and Construction Division of Capital
Asset Management – Boston, MA**

Rodd Merchant, P.E. - JE Dunn Construction – Denver, CO

Kimon Onuma, FAIA - Onuma, Inc. – Pasadena, CA

**Marty Doscher, AIA Co-Chair of TAP BIM Awards
Committee**

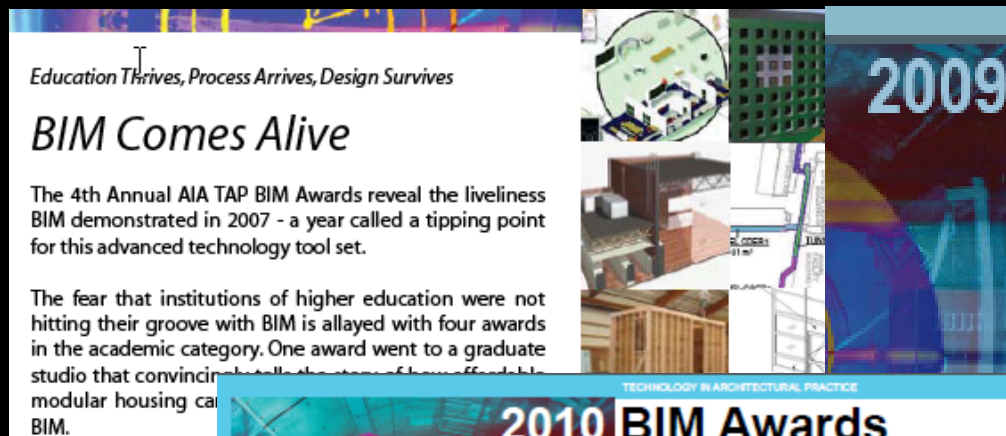


Technology in
Architectural Practice
<http://www.aia.org/TAP>

twitter  #AIATAP

Email: tap@aia.org

BIM Awards 2005-2011



Technology in
Architectural Practice
<http://www.aia.org/TAP>

twitter  #AIATAP

Email: tap@aia.org

GSA's 3D 4D BIM Program Lessons Learned



Technology in
Architectural Practice
<http://www.aia.org/TAP>

twitter  #AIATAP

Email: tap@aia.org



Charles Matta, FAIA

Director, Strategic Programs & Resources
GSA PBS Office of Design and Construction



Calvin Kam, PhD, AIA

Senior Program Expert, National 3D-4D-BIM Program
GSA PBS Office of Design and Construction



Peggy Yee, PhD

Program Expert, National 3D-4D-BIM Program
GSA PBS Office of Design and Construction

Building Information Modeling at GSA

Policy & Guidance, Interoperability, and why it matters

The Business Case:

Why do it?

Industry Leadership

within agency first

Incremental steps

Innovation

- BIM
 - Interoperability
- SmartBuilding Technology
 - Operational adaptability
- Industry Agreements
 - Public Owners

BIM Program

→ Pilot Program

→ GSA National Policy

→ National Standards

→ International Agreements

BIM at GSA

IDIQ nationwide contracts:

- BIM Services
- Laser Scanning Services

BIM + Next

Organization wide BIM server

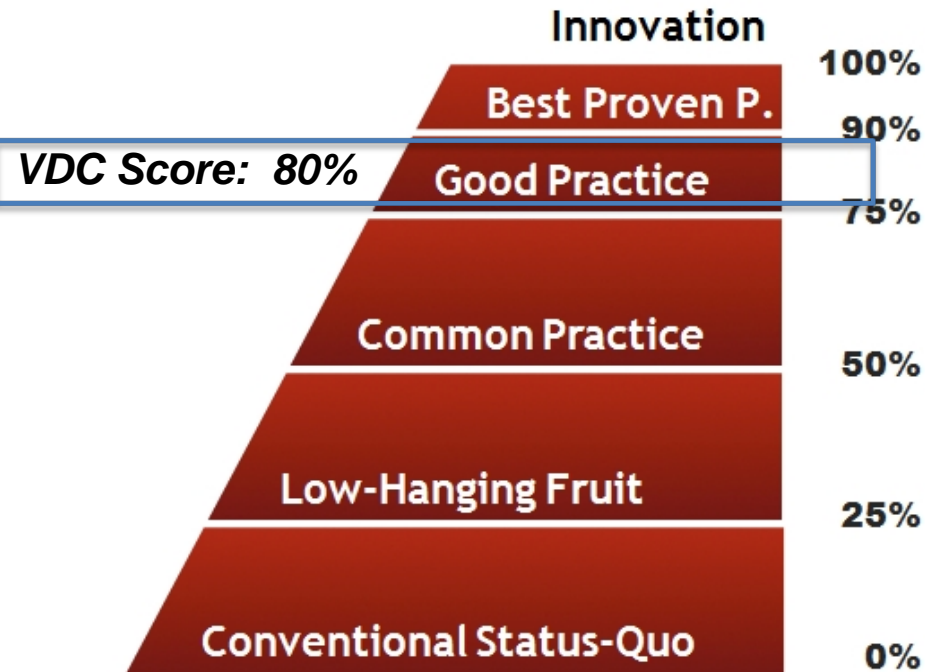
- On-demand access
- Open Standards data files

Project LifeCycle Tool for design & construction AND
Asset Management

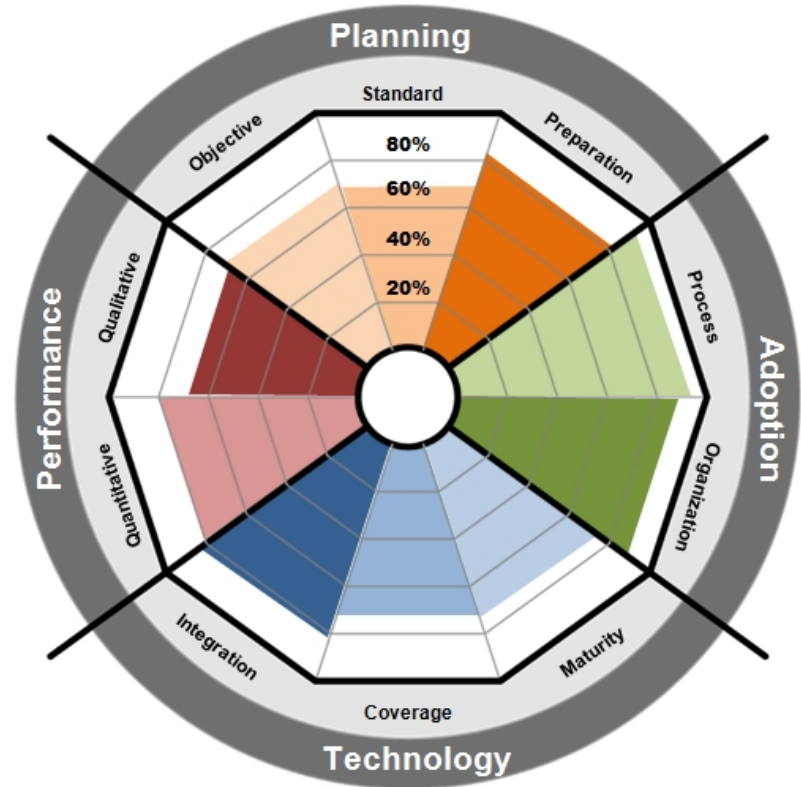
Integrated Project Delivery & FAR



Stanford VDC / BIM Scorecard

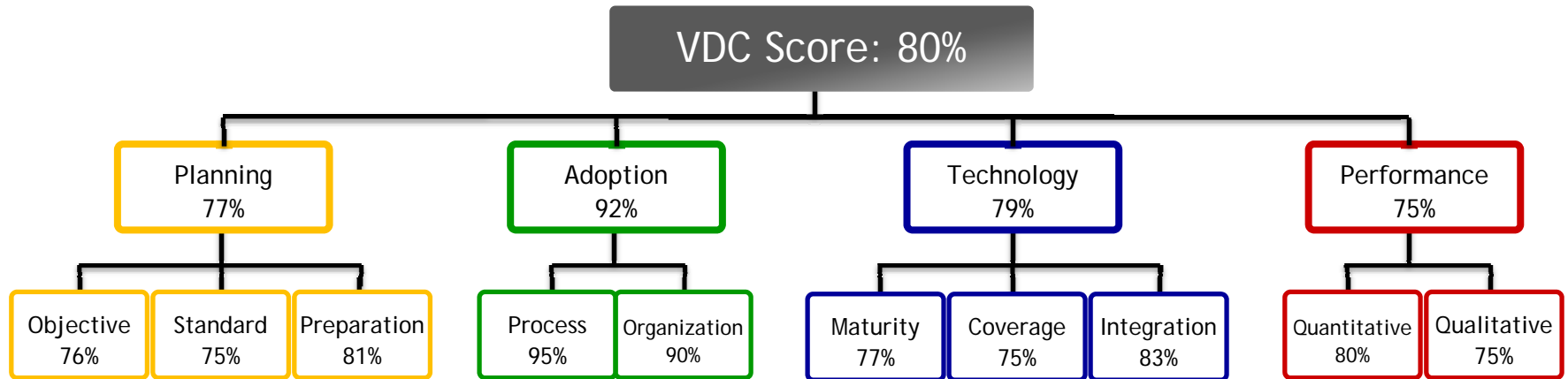


Confidence Level: 30%





Stanford VDC / BIM Scorecard

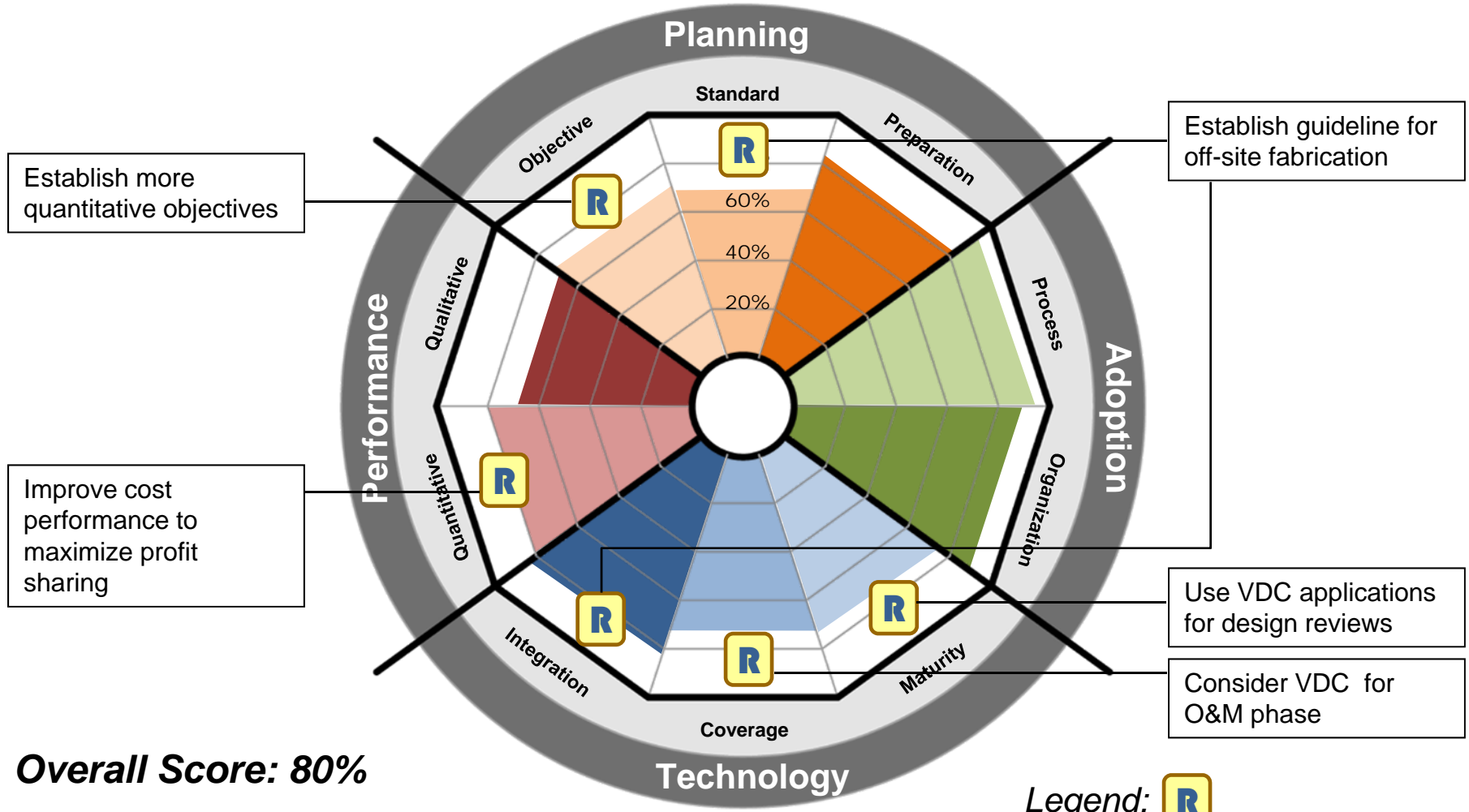


Findings from 22 Cases

	No.	Project Name	Leads	Type	# of Interviewees	VDC Score
AIA BIM Award	1	Sutter Medical Center Castro Valley	DPR	Medical	3	80%
	2	UCSF Mission Bay	DPR	Medical	2	71%
AIA BIM Award	3	EGWW	GSA	Federal Bldg.	1	70%
	4	Camelview	Optima	Residential	1	66%
	5	Alta Bates Summit Medical Center	DPR	Medical	1	57%
AIA BIM Award	6	Southern Polytechnic University	DPR	Lab	1	54%
	6	United Therapeutics	DPR	Office	1	54%
	6	McCoy FB Modernization	GSA	Federal Bldg.	1	54%
	9	Palomar Pomarado	DPR	Medical	1	52%
	9	Glodon Headquarters	Glodon	Office	4	52%
	9	NREL	NREL	Lab	4	52%
AIA BIM Award	12	Sensitive Project	GSA	Federal Bldg.	1	49%
	12	Journey to Madagascar	Scenario	Theme Park	1	49%
	14	Lucille Packard Children's Hospital	DPR	Medical	1	46%
	15	Chicago Federal Center	GSA	Federal Bldg.	1	45%
	16	Ten West Jackson	GSA	Federal Bldg.	1	44%
	17	Byron Rogers Federal Building	GSA	Federal Bldg.		43%
	18	San Diego Courthouse	GSA	Courthouse	3	39%
	19	Richard H Poff	GSA	Courthouse	1	38%
	20	Federal Center South / USACE	GSA	Federal Bldg.	3	37%
	20	San Antonio Courthouse	GSA	Courthouse	1	37%
	22	Building 105	GSA	Federal Bldg.	1	36%



Stanford VDC / BIM Scorecard



Overall Score: 80%

Confidence Level: 30%

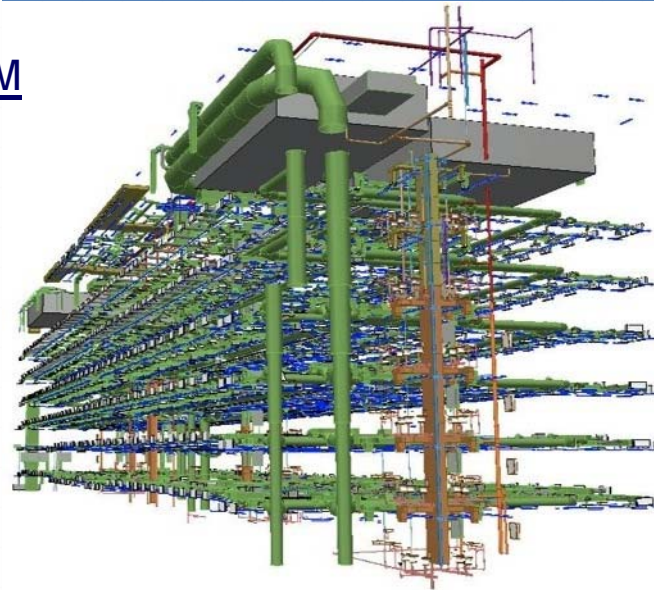
Legend:  Recommendation

Final Concept BIM

Design-Intent BIM

Construction BIM

As-Built/Record BIM



	A	B	C	D	E	F
	Floor Number	ASSET NO.	Site	Description	Equipment Type	Build Numl
1						
2316	11	00034572	P0625101	FIRE AND SMOKE DAMPERS	A45	MO0
2317	11	00034578	P0625101	FIRE AND SMOKE DAMPERS	A45	MO0
2318	11	00034678	P0625101	FIRE AND SMOKE DAMPERS	A45	MO0
2319	11	00034679	P0625101	FIRE AND SMOKE DAMPERS	A45	MO0
2320	11	00034702	P0625101	FIRE AND SMOKE DAMPERS	A45	MO0
2321	11	00034719	P0625101	FIRE AND SMOKE DAMPERS	A45	MO0
2322	11	00034720	P0625101	FIRE AND SMOKE DAMPERS	A45	MO0
2323	11	00034777	P0625101	FIRE AND SMOKE DAMPERS	A45	MO0
2324	11	00034799	P0625101	FIRE AND SMOKE DAMPERS	A45	MO0
2325	11	00034821	P0625101	FIRE AND SMOKE DAMPERS	A45	MO0
2326	11	00034822	P0625101	FIRE AND SMOKE DAMPERS	A45	MO0
2327	11	00034823	P0625101	FIRE AND SMOKE DAMPERS	A45	MO0
2328	11	00034824	P0625101	FIRE AND SMOKE DAMPERS	A45	MO0
2329	11	00045004	P0625101	CLOCKS BATTERY POWERED, PER FLOOR	A41	MO0
2330	11	11	P0625101	ELEVENTH FLOOR		MO0
2331	11	11LIGHTS	P0625101	LIGHT FXTURES 11TH FLOOR	A41	MO0
2332	11	11PF	P0625101	PLUMBING FXTURES	A43	MO0
2333	11	11SDP	P0625101	STANDPIPES	A45	MO0
2334	11	11SW	P0625101	SANITARY WASTE	A43	MO0
2335	11	11TEMP	P0625101	ADJUST TEMP	A42	MO0
2336	11	50006256	P0625101	FIRE AND SMOKE DAMPERS	A45	MO0
2337	11	50006282	P0625101	FIRE AND SMOKE DAMPERS	A45	MO0
2338	11	50006294	P0625101	FIRE AND SMOKE DAMPERS	A45	MO0
2339	11	50006295	P0625101	FIRE AND SMOKE DAMPERS	A45	MO0
2340	11	50006336	P0625101	FIRE AND SMOKE DAMPERS	A45	MO0
2341	11	50006337	P0625101	FIRE AND SMOKE DAMPERS	A45	MO0
2342	11	50006338	P0625101	FIRE AND SMOKE DAMPERS	A45	MO0
2343	11	50006339	P0625101	FIRE AND SMOKE DAMPERS	A45	MO0
2344	11	50006422	P0625101	FIRE AND SMOKE DAMPERS	A45	MO0
2345	11	50006423	P0625101	FIRE AND SMOKE DAMPERS	A45	MO0
2346	11	50006448	P0625101	SPRINKLER HEAD, SPRINKLERED AREAS (PEP	A45	MO0
2347	11	50006471	P0625101	FIRE EXTINGUISHERS, STORED PRESSURE W	A45	MO0
2348	11	70001264	P0625101	FIRE CONTROL VALVE 11 EAST 2"	A45	MO0
2349	11	70001265	P0625101	FIRE CONTROL VALVE 11 CENTER 2"	A45	MO0
2350	11	70001266	P0625101	FIRE CONTROL VALVE 11 WEST 2"	A45	MO0
2351	11	70001603	P0625101	(MAU 12E1) VAR. FREQ. DRIVE	A41	MO0
2352	11	70001604	P0625101	(MAU 12E1) AIR HANDLER UNIT, COMPUTER R	A42	MO0
2353	11	70001605	P0625101	11-VAV-14	A42	MO0
2354	11	70001606	P0625101	11-VAV-13	A42	MO0

Equipment Information, Type, Warranty; Fabrication Model

IFC + NavisWorks + COBIE + Native (tekla / cadduct / quickpen)

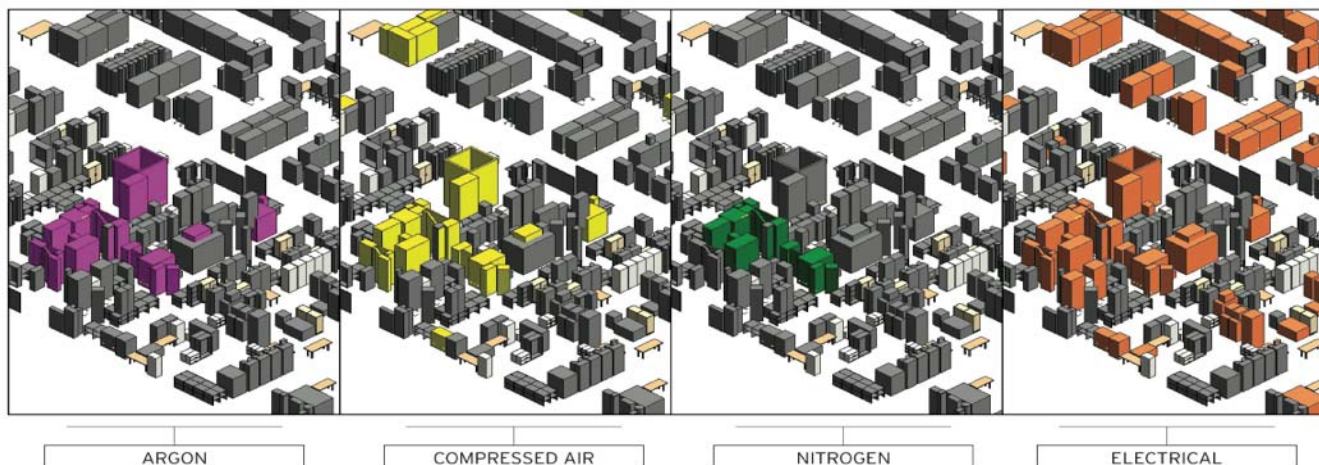
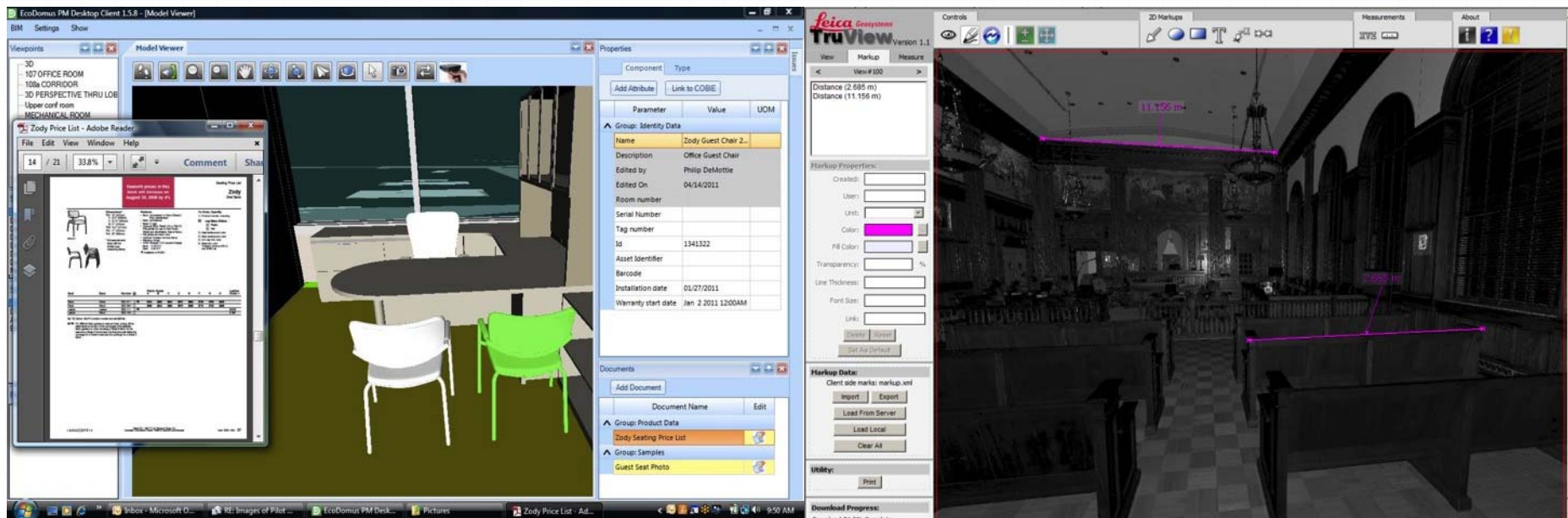


BIM-FM during Operations

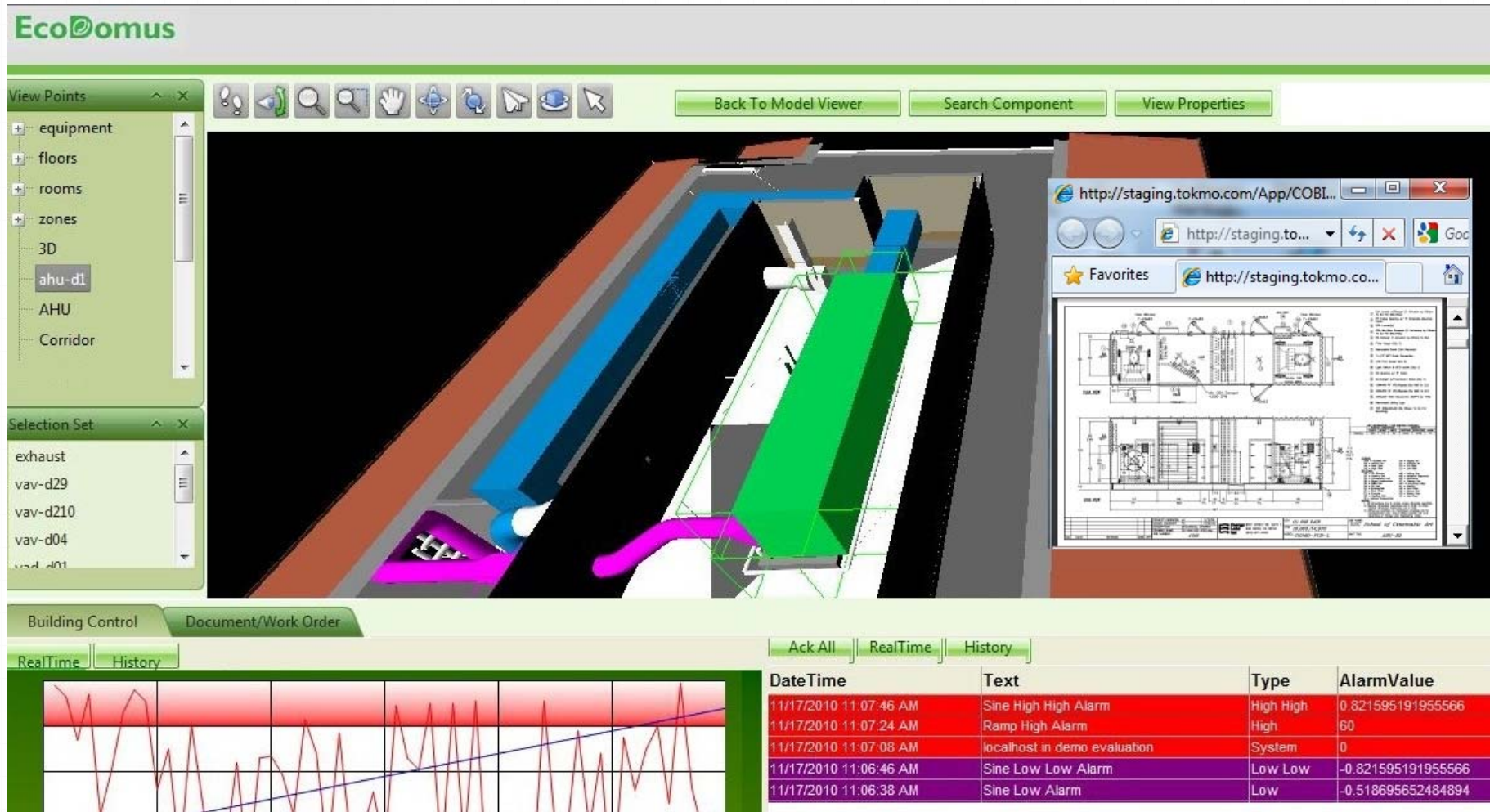
- **Inventory**
 - Equipment/component
 - Spatial location (vs. room #)
 - Specifications (vs. in a book)
 - Integration with CMMS
- **Maintenance and Repair Preparation**
 - Location of equipment / components
 - Parts breakdown (like in a repair manual)
 - System schematics (feeds, disconnects, control devices)
 - Parts and special tools
- **Extended and Continuous Commissioning**



Maintenance and Repair Preparation



Connecting BIM and CMMS



GSA BIM IDIQ Contractor: View By View / EcoDomus



Other FM Uses

- **Visualize Special Inventories**
 - Hazardous Locations
 - HAZMAT
- **Flexible Office Space Initiative**
 - Employee assignments
 - Familiarizations (exits, restrooms, etc.)
 - Janitorial scheduling
- **Working with tenant customers**
 - Space visualization
 - Tenant communications
- **Integration with GIS**

GSA BIM Guide Series 08: BIM and Facility Management



Section 1: BIM and Facility Management – Overall vision and objectives for using BIM during facility management.

Section 2: Implementation Guidance – Implementation guidance to GSA associates and consultants.

Section 3: Technology Assessment – Technology requirements for creating and using BIMs for facility management.

Section 4: Modeling Requirements – BIM object and attribute requirements for use during facility management.

Section 5: Pilot Projects – Description of GSA Pilot Projects for BIM and FM

GSA's 3D 4D BIM Program Lessons Learned

Questions & Discussion



Technology in
Architectural Practice
<http://www.aia.org/TAP>

twitter  #AIATAP

Email: tap@aia.org

A Case Study of 2011 AIA BIM Awards

Chicago Federal Center

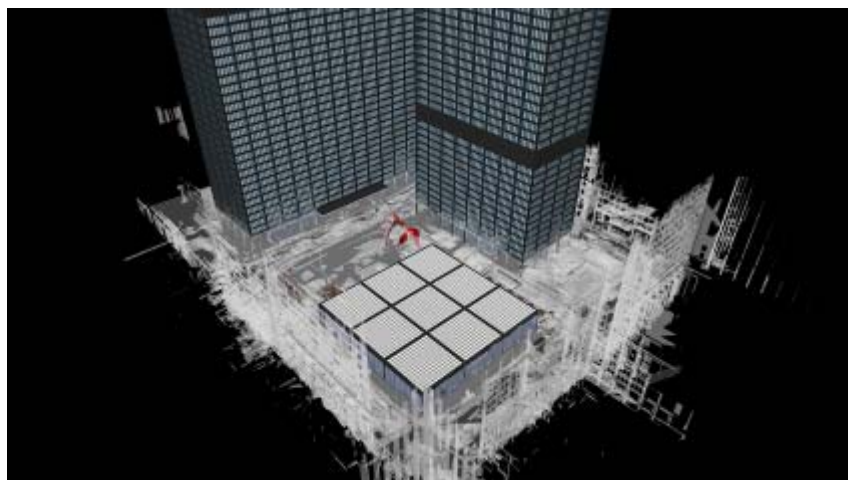
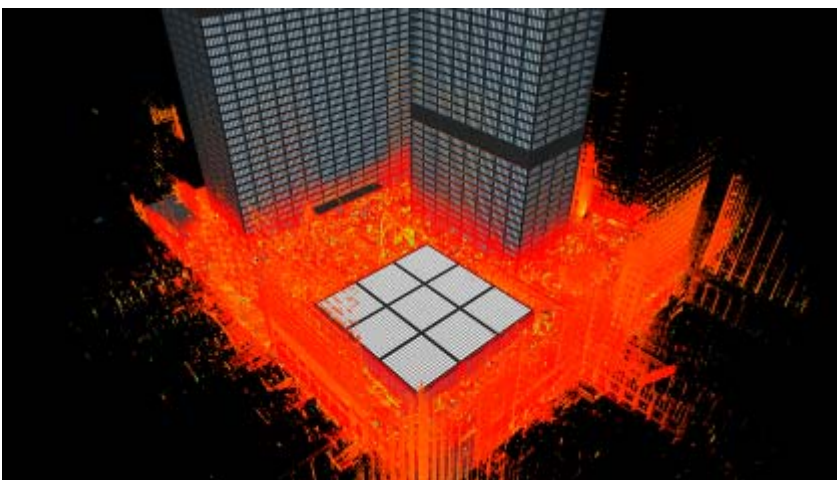
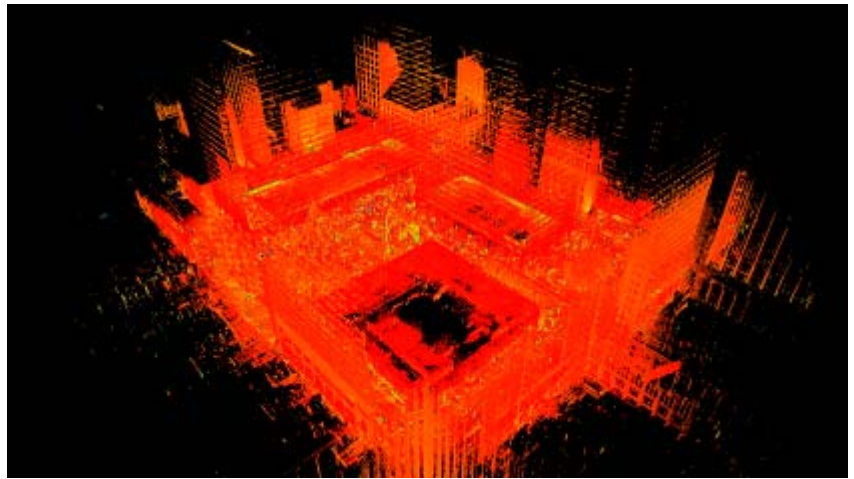
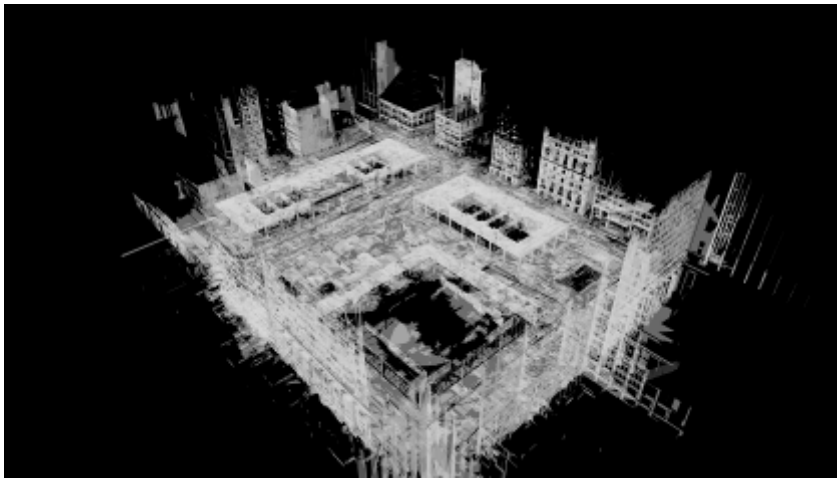
speaking: Richard Gee AIA, GSA
Robert Mauck AIA, Ghafari Associates
Paul Blanchard, Ghafari Associates



Technology in
Architectural Practice
<http://www.aia.org/TAP>

twitter  #AIATAP

Email: tap@aia.org



CFC / Region 5 – GSA BIM Deployment Process

- BIM Forum Finalist Presentation (Excerpts): Feb 11, 2011
- AIA TAP Process Innovation Category: Citation Award, May 11, 2011

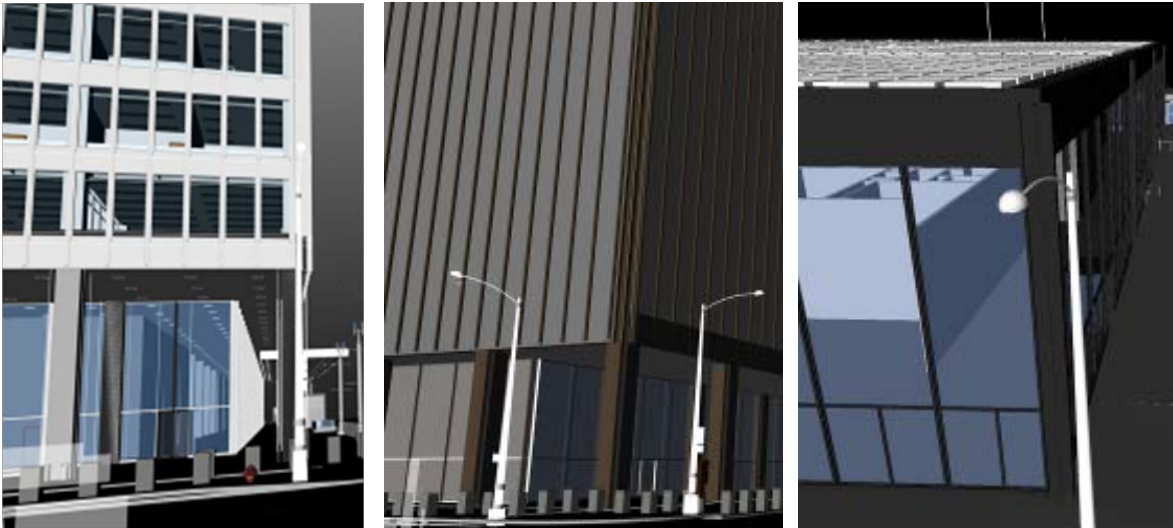
- Chicago Federal Center > R5 > BIM Champions Process
- BIM Standards/Wiki Site Overview
 - SOW/BEP/Templates/LOD modules
- Embedded Data Standards
 - Property Fields/COBie
- BIM Standards Wiki Site Navigation

Region 5 BIM Issues

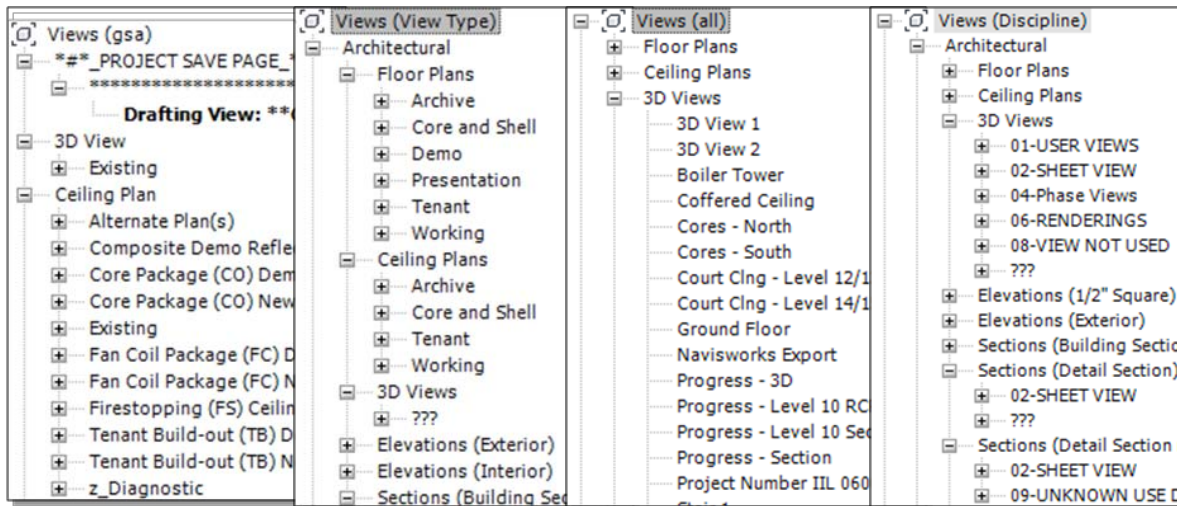
- ARRA Guidelines
- 10 BIM Models done by 10 D&C Teams
- 10 Different ways and methods
- Inconsistency on All Deliverables
- Lack of BIM Standards

Region 5 BIM Initiatives

- Establish BIM Standards In Addition to GSA BIM Series
- Utilize the National IDIQ BIM Contract



- File Names
- Embedded Intelligence
- Methods
(i.e. One entity with multi-elements)
- Level of Details
(i.e. mechanical element)
- Naming Convention
(i.e. room, equipment , building component, abbreviation, etc)
- Families, Colors, etc



CFC BIM Standards Process - IPD

Step 1

▪ Objectives

- **What** Benefits?
- Cost
- Time

▪ Stakeholders

- **Who** Benefits?
- D&C Team
- FM Team
- Asset Team

Step 2

▪ Requirements

- Designers
- Constructors
- Facility Managers
- Asset Managers

▪ Communication Tools

- SOW
- LOD
- BEP
- Template

Step 3

▪ Process

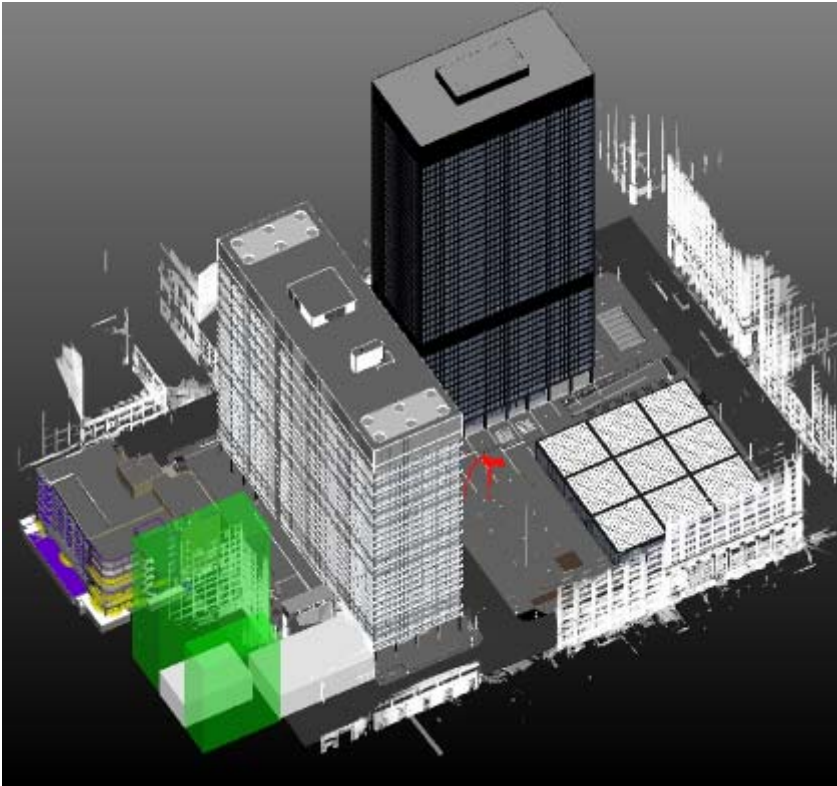
- Workshops
- Peer Reviews

▪ Partnering

- D&C Team
- FM Team
- Asset Team

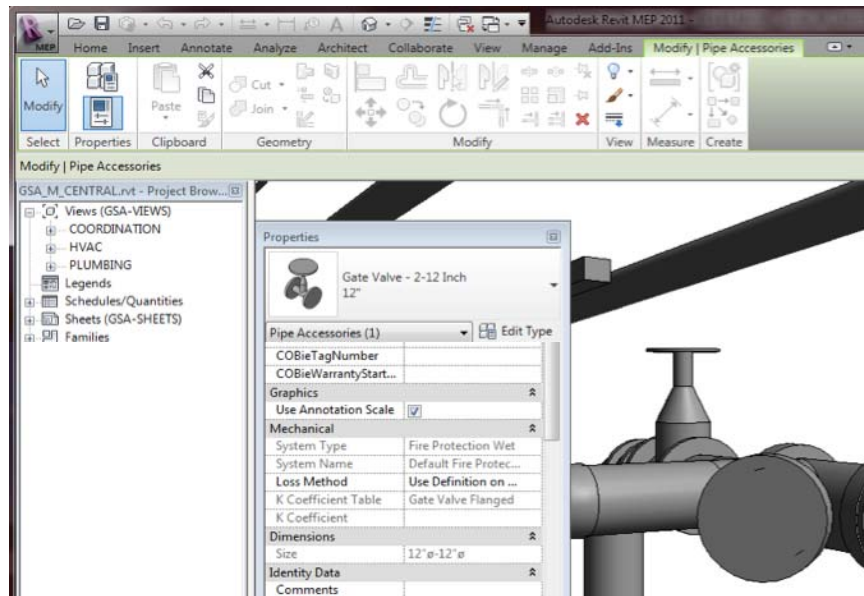
▪ Collaboration

- Other GSA Regions



Workshops: Nov. '09, May '10, Sep. '10
Outreach PM/FM: Apr. '10, D&C: Aug. '10

- Identify Top 10 Improvements
- Rank by Cost / Benefit
- Outline Process (for development)
 - Why Selected
 - Cost/Benefit
 - Standards Protocol
 - Peer Review
- Outline Product (deliverable)
 - e.g., template
- Post to CFC BIM http or PW site
- CFC Design Teams (next meeting)




- Prescription vs. Performance Balance
- Process: **BIM Execution Plan**
- **BIM Add vs. BIM Enable**
- Platform Balance (vs Neutrality)
Interoperability
- How share **Best Practices**
- **Templates** Baseline with Embedded Standards

GSA BIM Champions Workshop July 2010
GSA BIM Champions Workshop Nov. 2010

2. Scope of Work

Defines project BASIC and now shows responsibilities BIM hand-off and better pri expectations are synchron

[SOW Master](#)  Edit for pro

[SOW Options](#)  - Optional

New for 2011: BEP Require

Other Resources

[User Guide](#)

[Tutorials](#)

[References](#)

3. BIM Execution Plan

The BEP fine tunes the SOW's B required of the AE & GC. It define improve project workflows, minimi the design to construction handof

BEPs require periodic, team orier model coordination. The BEP con supports a BIM enabled approach

[BEP by AE](#)  Copy; edit; submit award

[BEP by GC](#) Work In Progress

Other Resources

[User Guide - AE](#)

[User Guide - GC](#)

[Tutorials](#)

[References](#)

4. A/S/M/E Templates

CFC projects require Revit BIM design files. Templates for all disciplines embed select CFC Standards including min. IFC and COBie compliance.

Revit Templates include User Guides, Audio/Visual Tutorials:

[Architectural with SDM \(Spatial Data Management\)](#)

[Structural](#)

[Mechanical](#)

[Electrical](#)

Other Resources

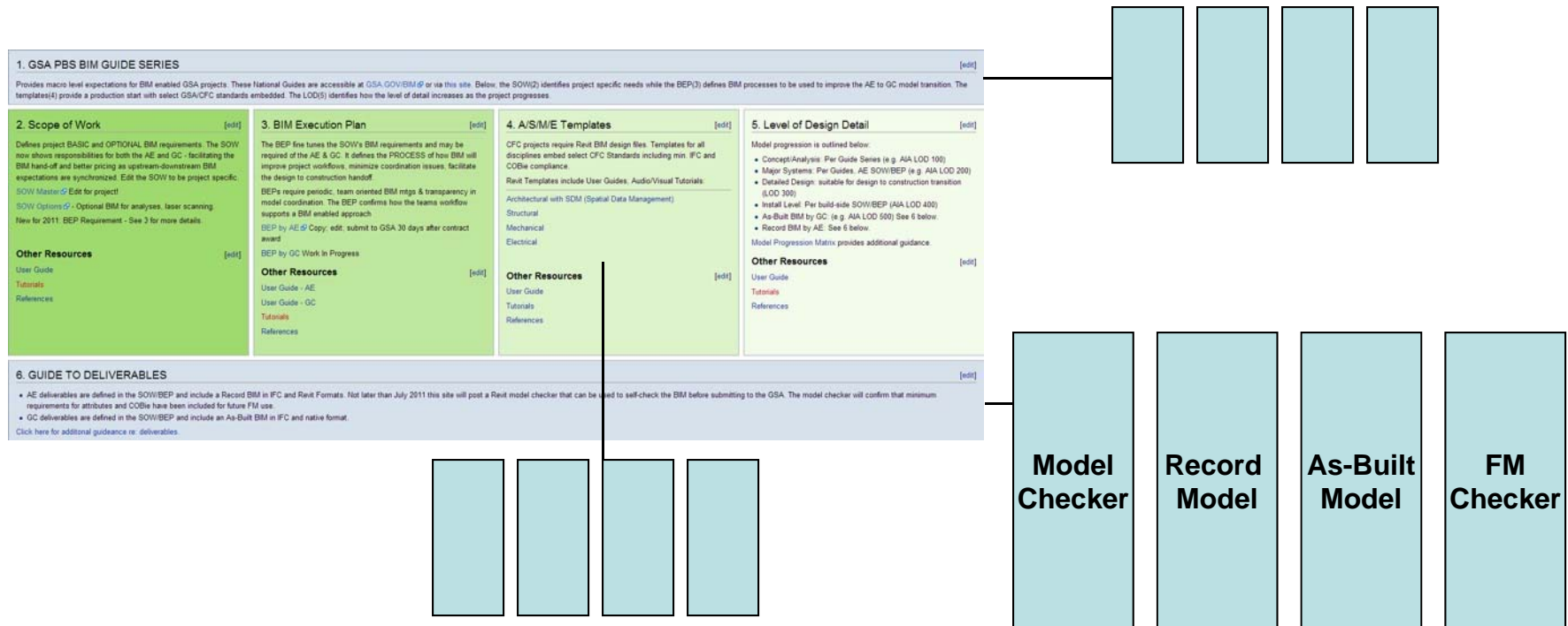
[User Guide](#)

[Tutorials](#)

[References](#)

GSA BIM Implementation *Process*

- Navigational guidance on HOW to BIM Enable
- Applicable to GSA PMs & supply chain partners
- Modular expansion & sharing of best practices
- Wiki edits by GSA BIM Champions & BIM IDIQs



Everything is Related – Embedded Data Standards

- GSA BIM Standards – Provides understanding of required data
- SOW – Defines what data is needed
- BEP – Generally defines who will provide data and when
- A/S/M/E/P TEMPLATES – Environment (medium) to provide the data
- LOD – Defines the level of data entry per phase
- GUIDE TO DELIVERABLES – Defines how the data is provided to the GSA

Templates – Embedded Data Standards

- By using the Templates, you are to standard
 - Property fields have already been generated to control the type of information that is allowed.
 - All required fields already exist within the templates
 - Property fields can be transported to an existing project if needed.
- Family Templates – Content creation to standard
 - If additional content is needed for the project, family templates have been created containing the fields of information to be filled out by contractor or designer.
 - Property fields can be transported to existing Families

Data Types – SDM Calculations

Properties

Areas (1) Edit Type

Constraints
Level FIRST FLOOR


Dimensions
Area 121.13 SF
Perimeter 45' 6"

Identity Data
Number 1026
Name WORK ROOM
Space Name WORK ROOM
Space Category Code 07
ANSI.BOMA Category 04
Space Type Code OTH
AB Code 4755
Comments Check Area Difference
Space Category Description Facility Joint Use
Space Type Description Other
AB Name FEDERAL SUPPLY SERVICE, LABORATORY
AB Short Name GSA REG FSS LAB
ANSI.BOMA Category Description Vertical Penetration
Building Specific Room Name SAMPLE
CBR Number CBR12345
Building Number GA0000ZZ
Architectural Room Number 122
Building Number

- Uses Area tools within Revit
- Uses Element information
- Available in all GSA Region 5 Revit Templates

PBS SPACE SCHEDULE						
Space Type Description	PBS Space Category Code	PBS Space Category Description	CBR Number	Area	Required Area	Area Difference
Auditorium	12	Under Construction	CBR1234	160 SF	90 SF	-70 SF
Bridge	02	Building Common	CBR1234	160 SF	165 SF	5 SF
Cafeteria	05	Committed Under Alteration	CBR1234	103 SF	100 SF	-3 SF
Circulation Vertical	07	Facility Joint Use	CBR1234	121 SF	150 SF	29 SF
Laboratory	10	Unmarketable	CBR1234	96 SF	350 SF	254 SF
				641 SF	855 SF	214 SF
				641 SF	855 SF	214 SF

Data Types – Elements

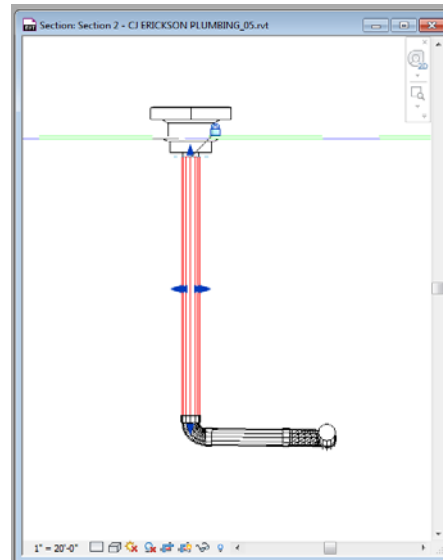
Properties	
	GA_Drain - Generic
Plumbing Fixtures (1)	
Constraints	
Construction	
Linked Photograph	
Linked Information	
Linked RFI	
Linked Sketch	
COBieAssetIdentifier	DR-16-0360-11
COBieAssetType	
COBieCategory	FIXTURES
COBieComponentSchedule	
COBieCreatedBy	GHAFARI
COBieCreatedOn	2010-09-03
COBieCurrencyUnits	
COBieDescription	PLUMBING FIXTURE - DRAIN
COBieDurationUnit	
COBieExpectedLife	15 YEARS
COBieInstallationDate	2011-05-30
COBieName	DRAIN
COBieProjectDescription	CFC PLAZA
COBieReplacementCost	75.00
COBieSerialNumber	5128-WCG-55-8299
COBieTagNumber	DR-16
COBieTypeCategory	PLUMBING
COBieTypeCreatedBy	
COBieTypeCreatedOn	
COBieTypeSchedule	
COBieWarrantyDescription	5 YEARS
COBieWarrantyDurationLabor	1 YEAR
COBieWarrantyDurationParts	1 YEAR
COBieWarrantyStartDate	2011-05-30
COBieWarrantyGurantorLabor	
COBieWarrantyGurantorParts	
Pro. Warranty	
Pro. Data	H:\GSA Chicago Fed Center Plaza
Owner's Manual	
3D Rendering	

- CoBie data available in Revit Templates and in Revit Family Templates
- Data is passed to Navisworks and IFC format, when model is exported
- Majority is instance based, some are type based.
- Schedule information

Data Types – System Information

Dr. 2										
8	PVC PIPE 8: Schedule 40 PVC		10	8' - 3"	14' - 1"	5' - 10"	LPO LEVEL	CJE-PVC-UG-ST	15.K / 14.K	C.K / B.K
15	PVC PIPE 15: Schedule 40 PVC	10	11	7' - 11"	7' - 11 1/2"	1' - 10"	LPO LEVEL	CJE-PVC-UG-ST	15.K / 14.K	C.K / B.K
R. Pl. Dr. 1										
1	PVC PIPE 1: Schedule 40 PVC		1	8' - 5 1/2"	14' - 3 1/2"	5' - 10"	LPO LEVEL	CJE-PVC-UG-ST	15.K / 14.K	D.K / C.K
18	PVC PIPE 18: Schedule 40 PVC	1	4	8' - 2"	8' - 2 1/2"	3' - 3 1/2"	LPO LEVEL	CJE-PVC-UG-ST	15.K / 14.K	C.K
33	PVC PIPE 33: Schedule 40 PVC	4	6,5	8' - 1"	8' - 2"	8' - 3"	LPO LEVEL	CJE-PVC-UG-ST	15.K / 14.K	C.K / B.K
R. Pl. Dr. 2										
2	PVC PIPE 2: Schedule 40 PVC		2	8' - 4 1/2"	14' - 2 1/2"	5' - 10"	LPO LEVEL	CJE-PVC-UG-ST	15.K / 14.K	D.K / C.K
36	PVC PIPE 36: Schedule 40 PVC	2	5	8' - 1"	8' - 1 1/2"	3' - 3 1/2"	LPO LEVEL	CJE-PVC-UG-ST	15.K / 14.K	C.K
R. Pl. Dr. 3										
3	PVC PIPE 5: Schedule 40 PVC		3	8' - 5"	14' - 3"	5' - 10"	LPO LEVEL	CJE-PVC-UG-ST	15.K / 14.K	D.K / C.K
10	PVC PIPE 10: Schedule 40 PVC	3	7	8' - 1 1/2"	8' - 2"	3' - 3 1/2"	LPO LEVEL	CJE-PVC-UG-ST	15.K / 14.K	C.K
11	PVC PIPE 11: Schedule 40 PVC	7	9,8	8' - 0 1/2"	8' - 1"	4' - 5 1/2"	LPO LEVEL	CJE-PVC-UG-ST	15.K / 14.K	C.K / B.K

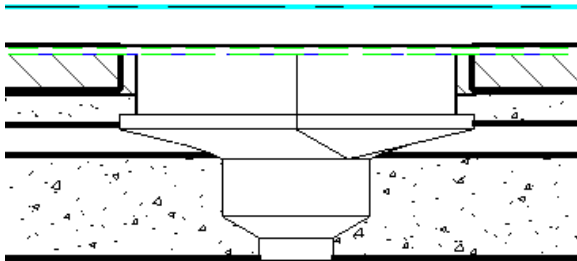
Constraints	
Elevation	0' 0"
Moves With Nearby Elements	<input type="checkbox"/>
Text	
Drain System	Dr. 2
PipeFittingEndMark	10
PipeFittingStartMark	
Hor. Col. Location	15.K / 14.K
Ver. Col. Location	C.K / B.K
Electrical - Loads	
Panel	
Circuit Number	
Mechanical	
System Type	
System Name	
Dimensions	
BottomOfPipe	8' 3 27/128"
TopOfPipe	14' 1 27/128"
Identity Data	
Comments	
Mark	8
Length/Angle	5' 10"
End Sizes	
Section Area	LPO LEVEL
Pipe Service	CJE-PVC-UG-ST
Elevation	B=34'-11"
Phasing	
Phase Created	New Construction
Phase Demolished	None
IFC Parameters	
IfcGUID	85DjTQiOR_000000000G8i



Data Types – Linked Data Any File Format

Plumbing Fixtures (1) Edit Type

Constraints	
Level	GROUND FLOOR
Host	Level : GROUND FLOOR
Offset	-0' 3"
Moves With Nearby Elements	<input type="checkbox"/>
COBieWarrantyDurationLabor	
Construction	
Linked Photograph	C:\Projects\97048\GSA Chicago Fed Center Plaza Restoration\Construction Model\Linked Photos\DOC 2 Rebar at Paver Opening.pdf
Pro. Warranty	C:\Projects\97048\GSA Chicago Fed Center Plaza Restoration\Construction Model\Revit Models\Warranties\Sample Warranty Letter - Blm.pdf
Pro. Data	C:\Projects\97048\GSA Chicago Fed Center Plaza Restoration\Construction Model\Linked Product Information\Product Data\221423 - ProD - Storm Drainage Piping Specialties - Roof Drain 1.pdf



INFORMATION LINKED TO REVIT MODEL



1 Photo - Rebar @ Paver Opening
NTS

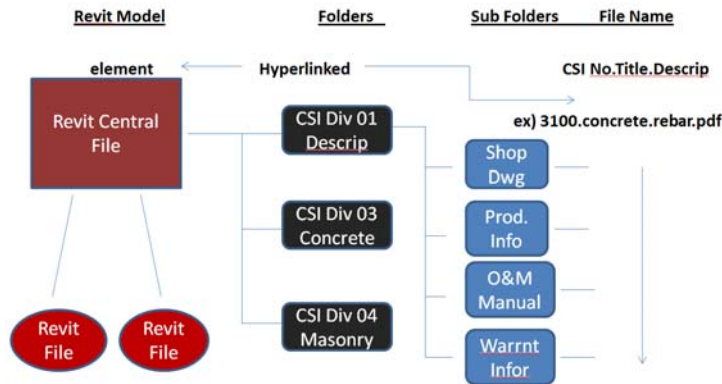
PROPERTY OF THE UNITED STATES GOVERNMENT - FOR OFFICIAL USE ONLY
DO NOT REPRODUCE THIS NOTICE - PROPERLY DESTROY DOCUMENTS WHEN NO LONGER NEEDED

DATE ADDED TO REVIT MODEL: ISSUED BY: <input type="checkbox"/> GSA <input type="checkbox"/> REFUNDING <input type="checkbox"/> CHAFFIN OTHER:	AVE CONTRACT NO.	GS-05P-09-GB-D-009	SHEET NUMBER	DOC 2
	DELIVER ORDER NO.	GS-P-05-09-GB-5027	AND FILENAME	
	CONST. CONTRACT NO.	TBD	PROJECT TITLE	CHICAGO FEDERAL CENTER
	BUILDING NAME	USPS LOOP STATION	GSA PROJECT NO.	GS-05P-09-GB-D-009
	ADDRESS	211 SOUTH CLARK STREET	SUBMISSION STAGE	RFI 66
	CITY, STATE, ZIP	CHICAGO, IL 60604	SUBMISSION DATE	21 SEP 2010
	BUILDING NO.	IL0235FC		

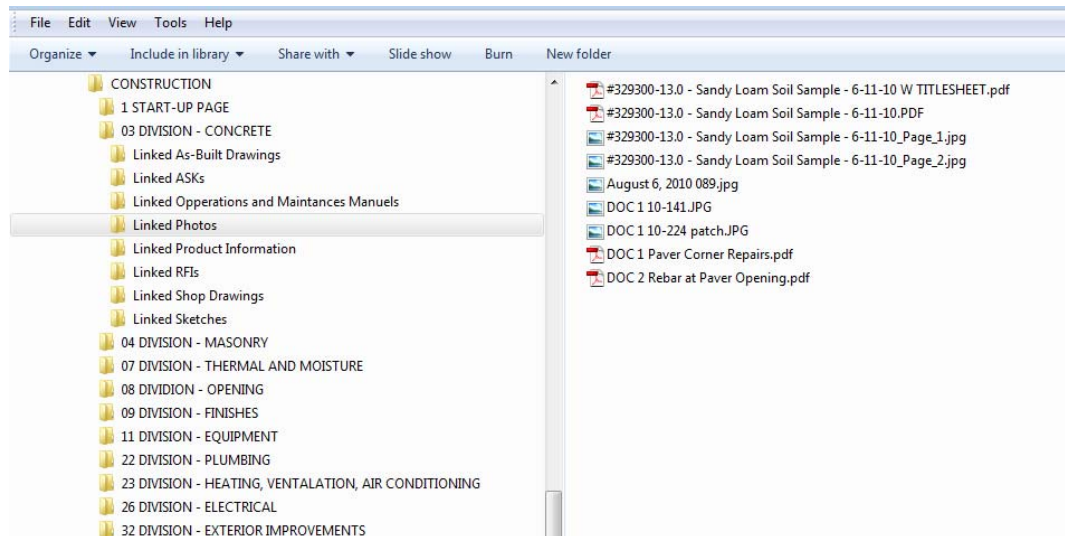
10/24/2010 4:21:58 PM

Data Organization

File/Folder Structure

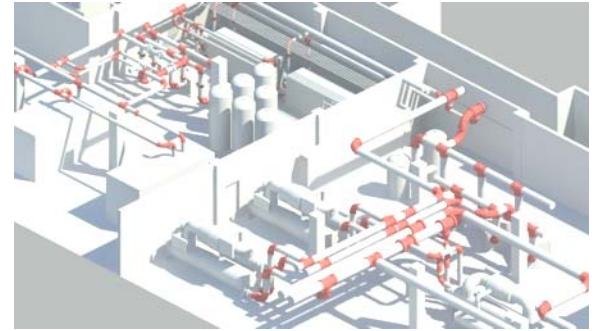


- Organized manner of reference files
- CSI divisions used
- Sub folders are defined and flexible



R5 PROJECTS USING BIM STANDARDS

1. Renovation project, 10 W. Jackson, Chicago, IL
2. Whipple Federal Building, Ft. Snelling Minnesota
3. DEA Renovation, JCK Federal Building, Chicago IL
4. CFC Plaza Renovation, CFC, Chicago IL
5. ARRA Renovation, Bean Center, Indianapolis, IN
6. ARRA Renovation, Minton Capehart FB, Indianapolis, IN



GSA BIM Standards Wiki Site Navigation

(Time Permitting)

A Case Study of 2011 AIA BIM Awards Chicago Federal Center

Questions & Discussion



Technology in
Architectural Practice
<http://www.aia.org/TAP>

twitter  #AIATAP

Email: tap@aia.org