



Technology Developments Servicing Law Enforcement and Facility Designs

**Dr. Patrick Sullivan, CEO and Founder
Oceanit**

www.oceanit.com

November 06, 2016

Copyright Notice

This presentation is protected by US and International Copyright laws. Reproduction, distribution, display and use of the presentation without written permission of the speaker is prohibited.

© The American Institute of Architects 2016

AIA/CES Compliance Statement

“AIA Knowledge” is a Registered Provider with The American Institute of Architects Continuing Education Systems (AIA/CES). Credit(s) earned on completion of this program will be reported to AIA/CES for AIA members. Certificates of Completion for both AIA members and non-AIA members are available upon request.

This program is registered with AIA/CES for continuing professional education. As such, it does not include content that may be deemed or construed to be an approval or endorsement by the AIA of any material of construction or any method or manner of handling, using, distributing, or dealing in any material or product.

Questions related to specific materials, methods, and services will be addressed at the conclusion of this presentation.

AIA/CES Reporting Details

All attendees will be eligible to receive AIA continuing education for attending this course by completing the electronic form sent via email after the conference.

Continuing education questions can be directed to aaaj@aia.org.

Course Description

Dr. Patrick K. Sullivan, Oceanit founder and CEO, will present the latest developments and sophisticated innovations being developed at Oceanit to meet the growing needs of law enforcement agencies in Hawai'i and abroad.

Teams at Oceanit practice transdisciplinary thinking to allow for extraordinary problem solving across disciplinary boundaries in science, engineering, and technology. Nanotechnologists work alongside structural engineers to create advanced materials, software, and sensor and communication systems to enhance law enforcement. Their core competency is: The Impossible.

Learning Objectives

1. Importance of sharing resources and collaboration in Hawai'i
2. Technological developments servicing law enforcement and facility designs.

Company Overview

A mind to market company...

- that was founded in Hawai'i in 1985
- that has 160+ Employees
- with multi-disciplinary experience (25% PhDs)



SAN
FRANCISCO, CA



WASHINGTON D.C.

O'AHU

MAUI

HOUSTON, TX

MAIN OFFICE
828 FORT STREET MALL
SUITE 600
HONOLULU, HI 96813

 OFFICES
 RESEARCH FACILITIES





Aloha

Sharing Justice Architecture **Hawaii's Law Enforcement Roles**

United States Marshal's Service
District of Hawaii

**The Mission: To Protect, Defend, and Enforce the
American Justice System**

United States Marshal Gervin Miyamoto

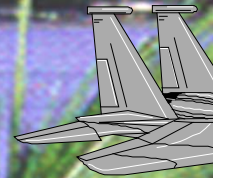


Academy of Architecture for Justice Conference

November 2-5, 2016 | Honolulu, Hawaii



United States Marshals *District of Hawai'i* ALOHA-Sharing Justice Architecture





U.S. Marshals Service

“The nation’s oldest and most versatile federal law enforcement agency, founded in 1789”



UNITED STATES MARSHALS-HAWAII HISTORY

Territory Marshals

Daniel Day	June 4, 1900-1901
Eugene Hendry	October 9, 1901-January 23, 1902
Henry Holt	April 24, 1912-1914
Jerome Smiddy	September 14, 1914-1921
Oscar Cox	August 16, 1921-March 5, 1928
Otto F. Heine	June 18, 1934-June 26, 1940
Thomas R. Clark	May 20, 1954-August 20, 1959



United States Marshals-After Statehood August 21, 1959

Thomas R. Clark	August 21, 1959-1961
Wesley Petrie	May 16, 1961-1965
Tommy Kaulukukui	Jun 24, 1965-1977
Edward Keliikoa	October 7, 1977-1980
James Proportnick	September 1, 1980-1982 Interim Chief Deputy
Faith Evans	August 12, 1982-1991
James Proportnick	February 1, 1991 Interim Chief Deputy
Anne Kent	October 9, 1992-1998
Howard Tagomori	September 4, 1998-2002
Mike Ferstl	October 5, 2002-May 2003 Interim Chief Deputy
Mark Hanohano	June 4, 2003-May 2010
Gervin Miyamoto	June 17, 2010

District of Hawaii United States Marshal Gervin Miyamoto



United States Marshal Gervin K. Miyamoto was nominated by President Barack Obama on January 20, 2010 to serve as the (19TH) District of Hawaii, United States Marshal and was confirmed by the United States Senate, May 2010.

US Senator Daniel Inouye and US Senator Daniel Akaka selected Marshal Miyamoto as a candidate based on his well balanced 43 years of combined military and civilian law enforcement

He served 25 years with the Honolulu Police Department and was fortunate to be selected to serve in 10 different HPD assignments: Task Group (SSD) Criminal Intelligence, CID, Training, Vice Narcotics, Patrol D-2/6, Comm. Rel and Chief's Office

Served in the Army-Air National Guard and was a Commander for 4 different units, to include the Counterdrug Directorate for Hawaii. He retired from the Guard as a Lieutenant Colonel and assistant to the Adjutant General of the State of Hawaii July 1999.

In August 1999-May 2010 Served in the US Attorney 's Office
Marshal Miyamoto was sworn in at USMS Hqtrs by Director John Clark June 17, 2010.

Graduate of Roosevelt High School, BGS Chaminade University Justice Mgt and Masters of Arts Organizational Management , University of Phoenix



Overview of the United States Marshal's Service

US Marshals are Presidential Appointments and confirmed by the US Senate. U.S. Marshals (94) lead in all 50 States-Territories

1. USMS has more than 4,200 Deputy US Marshals, the service was incepted in 1789
2. The USMS is the enforcement arm of the federal courts.
3. Duties include:
 - a. Protecting the Federal Judiciary and witnesses
 - b. Fugitive Apprehension-Federal-State
 - c. Transporting Federal Prisoners
 - d. Seizing Property acquired illegally by criminals
 - e. Sexual Offender Investigations-Adam Walsh Act

Most significant- USMS are able to perform these roles by **coordinating** with other federal, state, and local law enforcement agencies.

Another note State Deputy Sheriffs- manage the State Courts.

Judicial Security Division

*DESIGNS-THINK COVER AND SAFETY FOR
THOSE WHO ATTEND FEDERAL COURT*



- January 4, 2010 30-40 Gun Shots where heard at the Lloyd D. George Federal Court Building
- The Gunman-66 year old Johnny Lee Wicks upset over a Social Security decision
- Shoots and Kills Court Security Officer Stanley W. Cooper and wounds a Deputy US Marshal

Lloyd D. George Federal Court Building- Front Entrance



Federal Court Front Entrance



**Position of gunman-
shooting towards the
building**

Pellets from the Shotgun-Death of Court Security Office Stanley W. Cooper January 4, 2010



President Obama Nominates Gervin Miyamoto as 19th US Marshal for the District of Hawaii

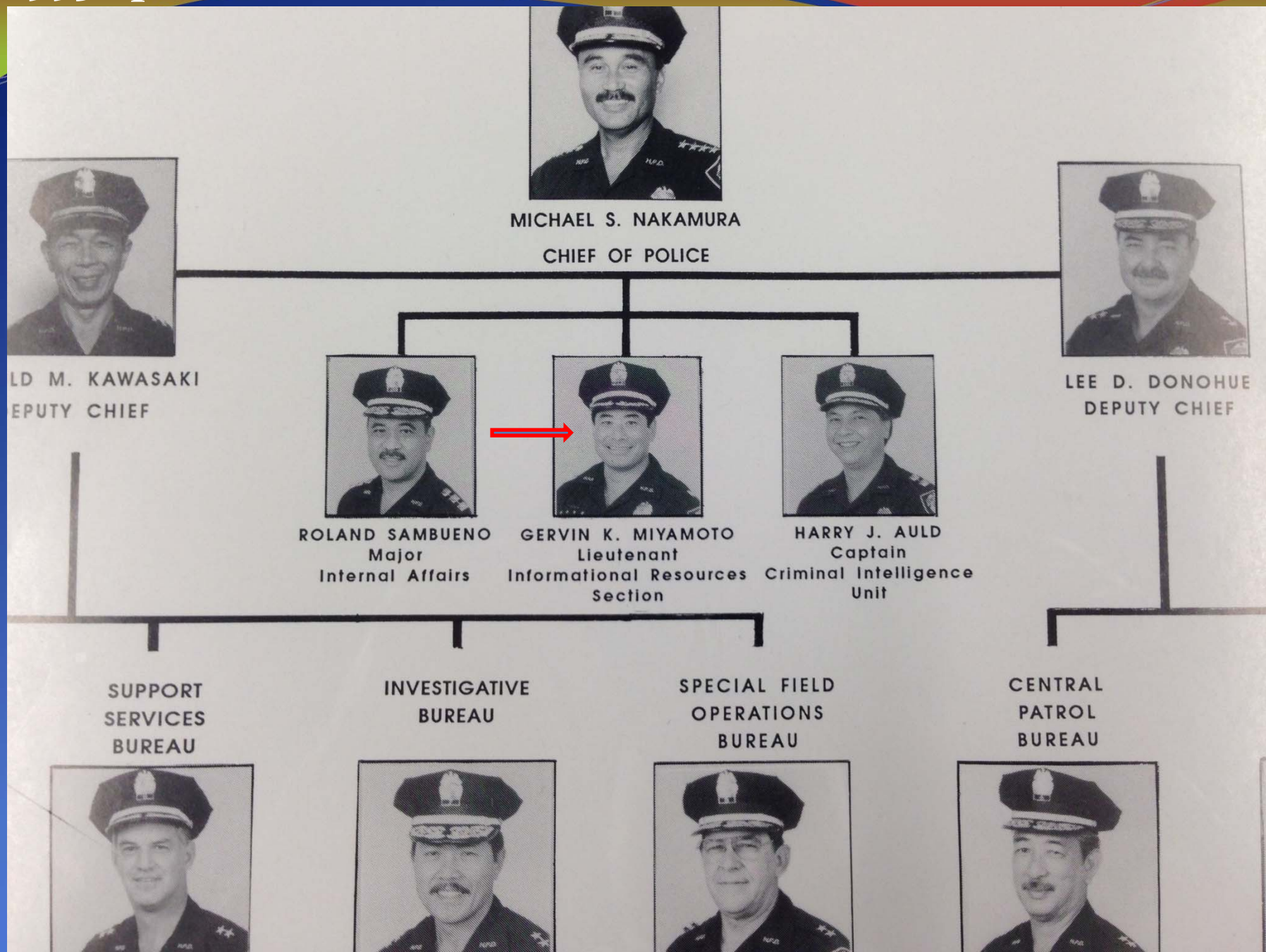




Honolulu Police 1971-1999



1995 Special Assistant to the Police Chief Mike Nakamura





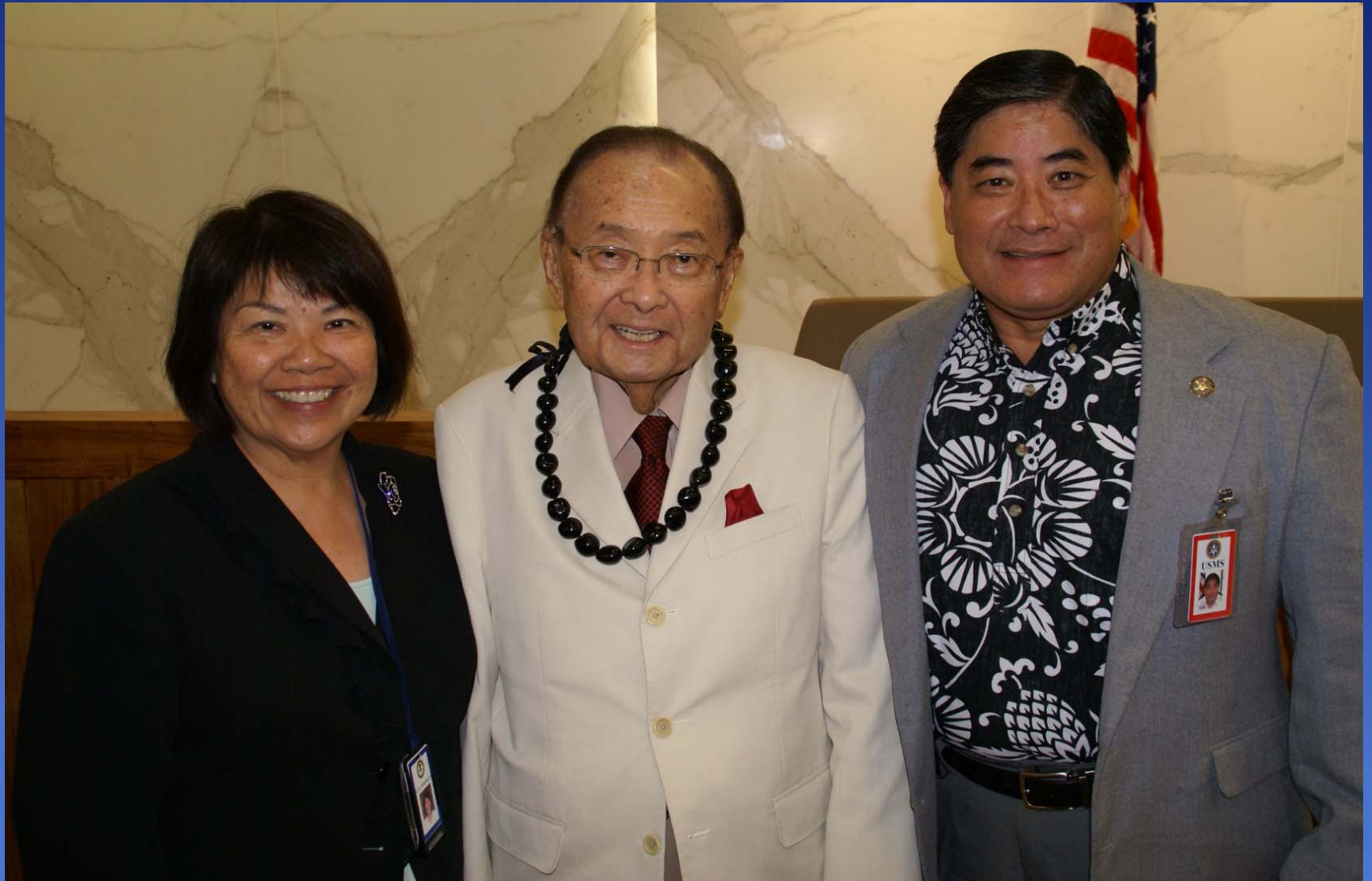


Air Force 1 President's Aircraft





US Senator Pro Tempore Daniel Inouye US Attorney Flo Nakakuni- US Marshal Gervin Miyamoto





Thank you Senator Daniel Akaka for my nomination



Gervin's Investiture July 13, 2010 **My Circle of Life**





My Football-Military-HPD-US Attorney's Office Prepared me to become the US Marshal



Marshal Miyamoto Participates in DOJ Asian American and Pacific Islander Heritage Month Event

Marshal Gervin K. Miyamoto (D/HI) participated in the Department of Justice's Asian American and Pacific Islander Heritage Month commemorative program on May 21, 2012. The theme for this year's event was "Striving for Excellence in Leadership, Diversity and Inclusion." Marshal Miyamoto and U.S. Attorney Preet Bharara (S/NY) provided the program's keynote remarks. Marshal Miyamoto shared many of his experiences working as a member of law enforcement within Hawaii's diverse mix of cultures and ethnicities.



Robert Kennedy Great Hall of Justice (Main Justice) Washington DC Asian American-Pacific Islander Heritage May 12, 2012



Tony West A/ AG USA Preet Bharara S/Dist NY

Police Chiefs Hawaii Law Enforcement Memorial- Dedication Ceremony May 15, 2016



**In Memoriam “E hali’a aloha mau kakou”
(We will always remember with Aloha)**



Joan Gribbin-Aiu (Her Vision)

(1966 to 2012)

**Former Executive Director & President-
Hawaii Law Enforcement Memorial Foundation**



Hawaii Law Enforcement Memorial Dedication Ceremony

Mr. Dwight Mitsunaga a graduate of UH Manoa Architecture, President of Pacific Architects, Inc played a pivotal role in the development and completion of the Hawaii Law Enforcement Memorial.



VIEW-1



The image shows a curved concrete wall of a memorial. The wall is light-colored and has black text engraved on it. The text is arranged in three lines. The first line is in all caps and reads 'HAWAII LAW ENFORCEMENT'. The second line is in all caps and reads 'MEMORIAL'. The third line is in all caps and reads 'WE WILL ALWAYS REMEMBER WITH ALOHA'. To the left of the first line, there is smaller text in all caps that reads 'KUPU'IA MAU KĀKOU'. The wall is surrounded by a concrete walkway with three circular manhole covers. In the background, there is a building with a concrete and wood facade, a tree, and some greenery.

HAWAII LAW ENFORCEMENT
MEMORIAL
WE WILL ALWAYS REMEMBER WITH ALOHA

KUPU'IA MAU KĀKOU

US MARSHAL-DEDICATION CEREMONY OF THE HAWAII LAW ENFORCEMENT MEMORIAL May 15, 2016 National Police Week



Solemn Peace



Hawaii Fugitive Task Force



Maui, Kauai, Hawaii





Hawaii Fugitive Task Force Operation Lokahi (Unity)



**Sixty-two (62) Arrests in 2 day Operation
123 Felony Warrants Served**



KGMB 9 Lynn Kawano- Hawaii Fugitive Task Force Kona Operations November 3-5, 2015





GERVIN MIYAMOTO
WESLEY SNIPES
ROBERT DOWNEY JR.

The cop
who won't stop
is back.

But this time
he's chasing down
a lot more
than a fugitive.



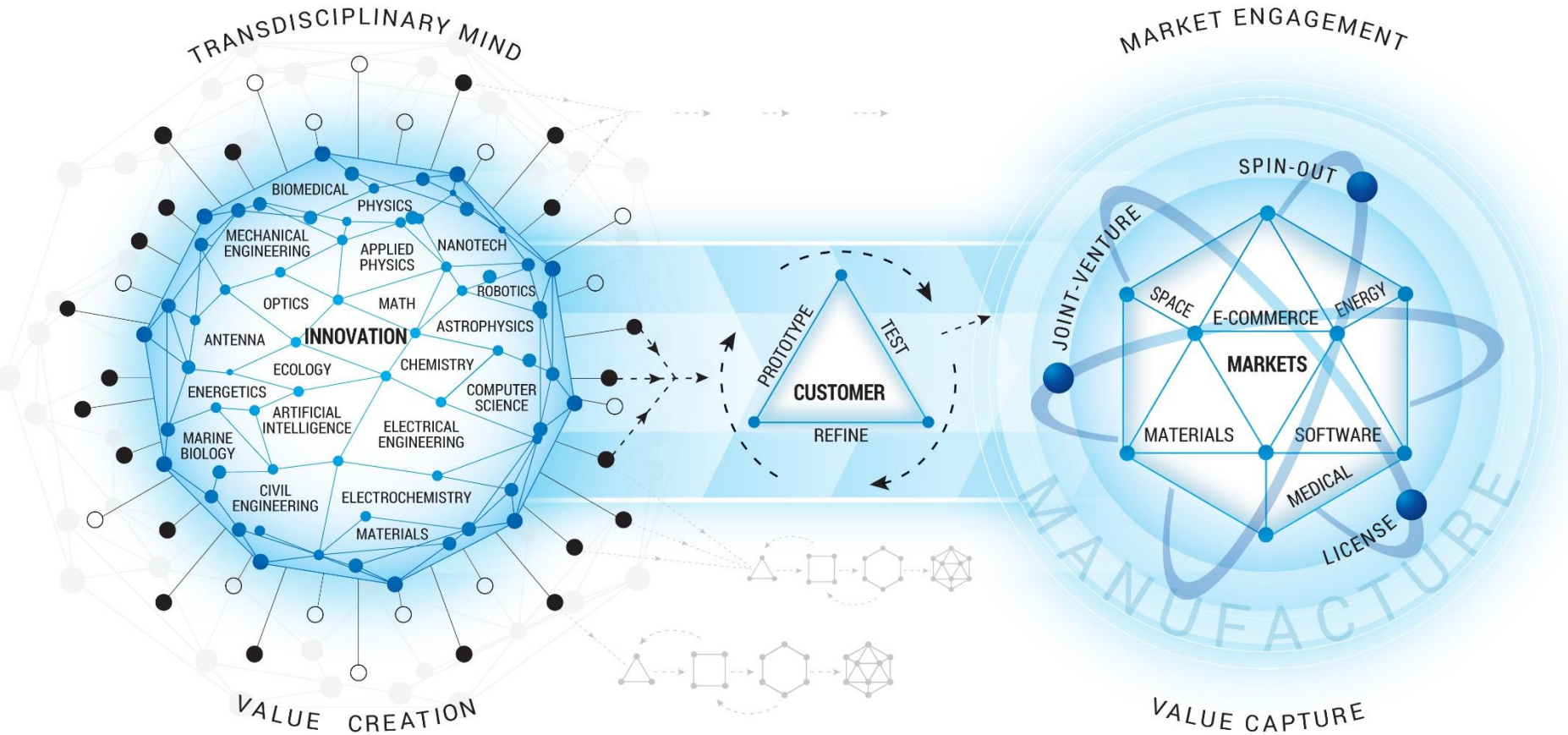
U.S. MARSHALS



QUESTIONS?

WARNER BROS. PRESENTS
A KOPPELSON ENTERTAINMENT/KEITH BARISH PRODUCTION TOMMY LEE JONES WESLEY SNIPES ROBERT DOWNEY JR. "U.S. MARSHALS" JOE PANTOLIANO
KATE NELLIGAN TONY VUOLO AND IRENE JARROLD PRODUCED BY STEPHEN KOPPELSON WRITTEN BY TERRY HARRINGS ACTED BY
MARTIN DONOVAN DIRECTED BY MARTIN DONOVAN

Mind to Market



Business Model

Aerospace

**Engineering
Consulting**

**Life
Sciences**

**Information
Systems**



nano**point**

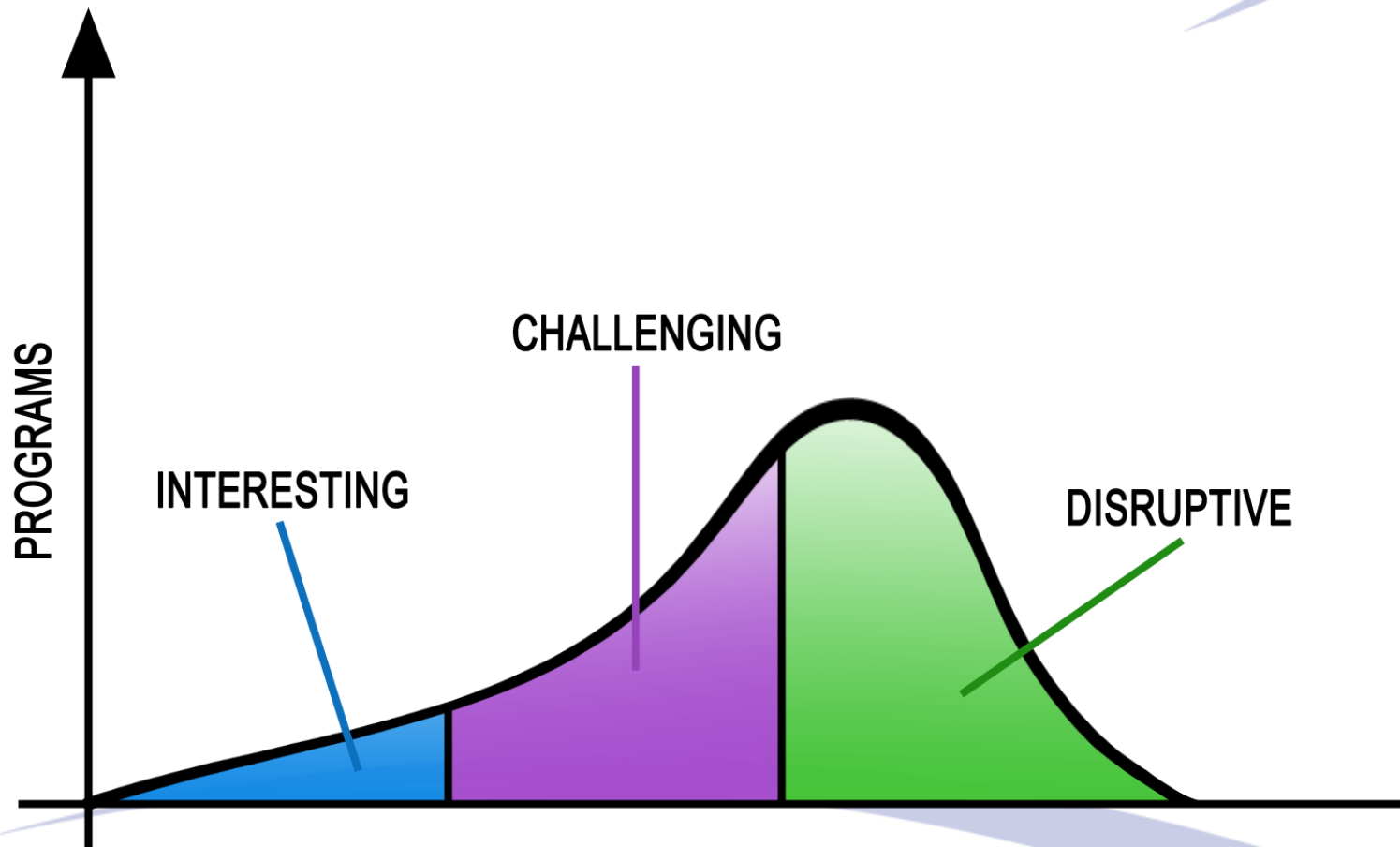
HOANA

ToxiTEC

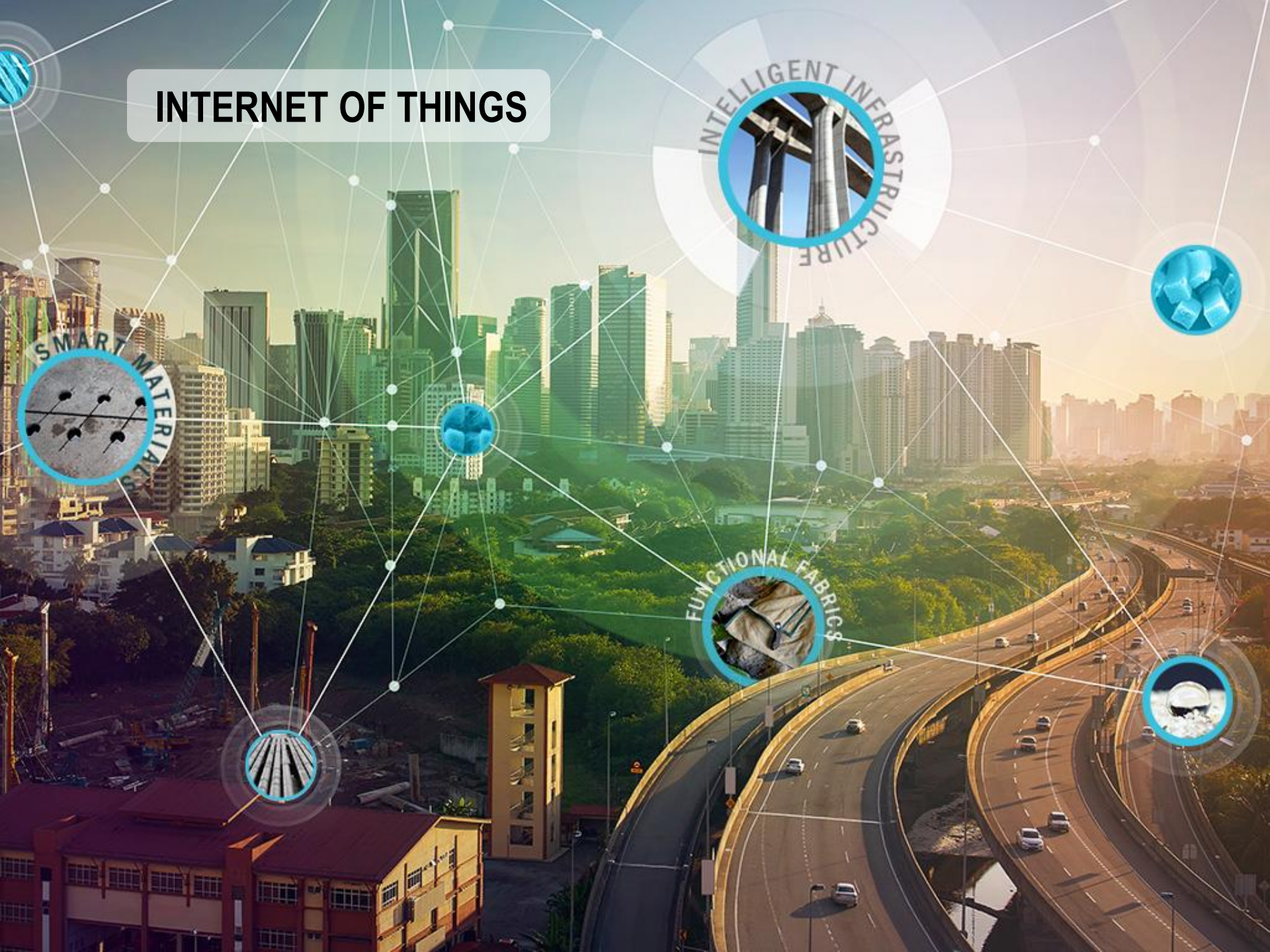
FLASH

MOSAIC

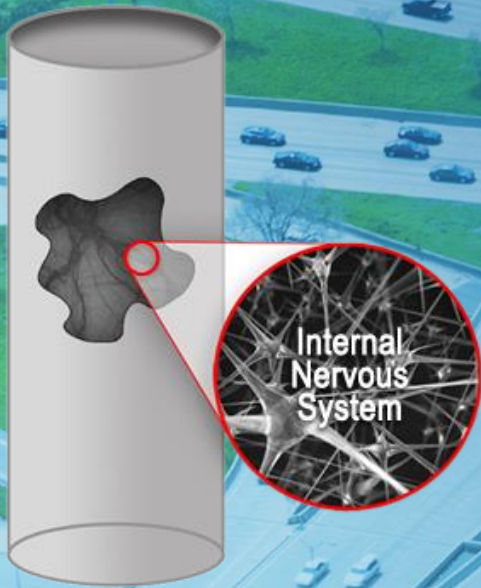
R&D Portfolio



INTERNET OF THINGS



SMART/SENSING CONCRETE



STAR TREK SICKBAY BED



DRIVER HEALTH/MOOD MONITORING

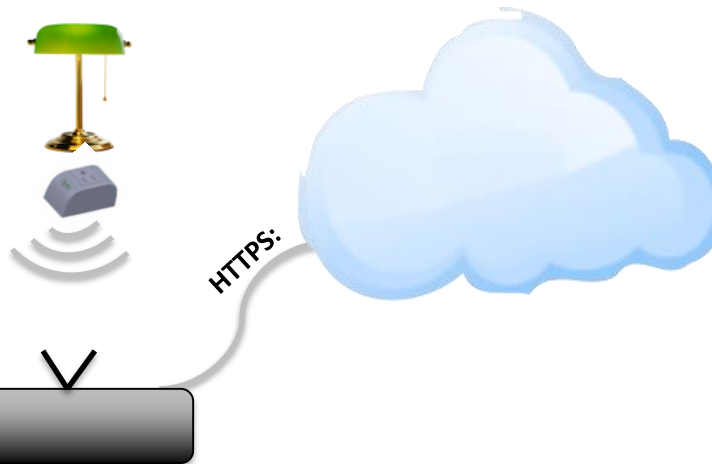


ENERGY MANAGEMENT

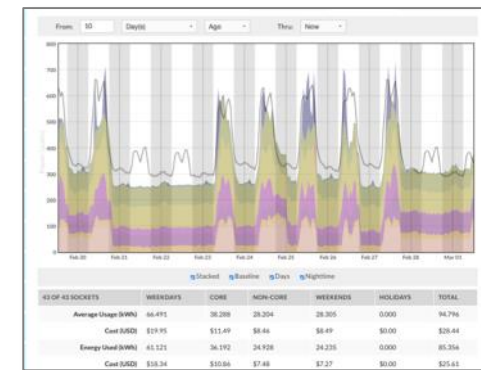




Solution: Ibis Smart Socket and Analytics



SAAS PLATFORM



Installation

- 1) Plug Sockets into wall
- 2) Establish Secure Mesh Network
- 3) Communicate with Cloud Server
- 4) Measure Usage and Control Devices in Real Time

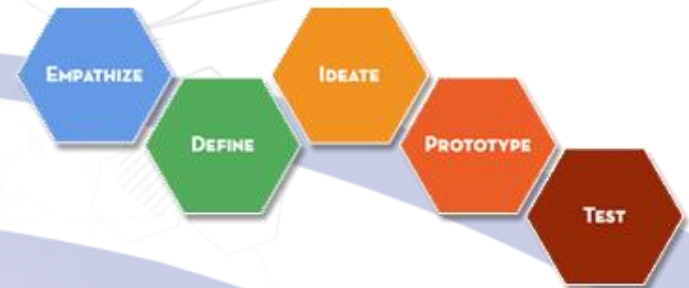
Platform Output

- Aggregate data across IntelliNetwork™
- Real-Time Measurement and Control
- Actionable Analytics
- Accessible from any PC / Tablet

Design Thinking

(Technology Realization)

- DT is not about design...HCD
- You're already doing DT...but most time its late in the process
- Solving symptoms vs. the root problem
- The illusion of efficiency
- Design WITH vs. For
- A natural silo buster. Before you know it, you're working together
- The more complex the problem the better
- It's messy



Questions?



oceanit.