

Bayshore Dental
Whitefish Bay, Wisconsin



SQ FT
4,221 BGSF



OWNER/AFFILIATION
Bayshore Dental



ARCHITECT(S)
Johnsen Schmalzing Architects



COMPLETION DATE
2016

Note: 4,221 BGSF per floor - Dental clinic located on 2nd floor. 1st floor is a separate tenant space.



SITE MAP



ABOUT | DESIGN INTENTIONS

LOCATED IN SUBURBAN MILWAUKEE, BAYSHORE DENTAL IS THE **AMBITIOUS REINVENTION OF AN ABANDONED BUILDING** AND ITS TRANSFORMATION INTO A STATE-OF-THE-ART CLINIC FOR A YOUNG DENTIST AND HER SMALL STAFF. THE PROJECT'S **RIGOROUS ARCHITECTURE AND METICULOUS DETAILS ECHO THE ETHOS OF THE FLAWLESS EFFICIENCY, UNCOMPROMISING PRECISION AND EXACTING PURITY** AT THE CENTER OF THE INNOVATIVE DENTISTRY PERFORMED HERE. **PROCEDURAL FLOW STRATEGIES INFORMED THE CLINIC'S OVERALL LAYOUT.** A CONTINUOUS CEILING PLANE LEADS PATIENTS FROM THE LIGHT-FILLED RECEPTION TO THE INDIVIDUAL OPERATORIES, EACH MARKED BY GREEN VERTICAL PANELS AND LIGHT STRIPS THAT ANIMATE THE CLINIC'S CENTRAL CORRIDOR. WHITE OAK CABINETRY AND GREEN ACCENTS COMPLEMENT THE INTENTIONALLY RESTRAINED INTERIOR PALETTE, ALL CONTRIBUTING TO A **DELIBERATELY SERENE AMBIENCE INTENDED TO APPEAL A SOMETIMES APPREHENSIVE CLIENTELE.** THE CLINIC TAKES UP THE SECOND FLOOR OF THE BUILDING. THE FIRST FLOOR IS A SHELLLED RETAIL SPACE FOR A SEPARATE CLIENT.

Bayshore Dental

Whitefish Bay, Wisconsin

Optimized Procedural Flow

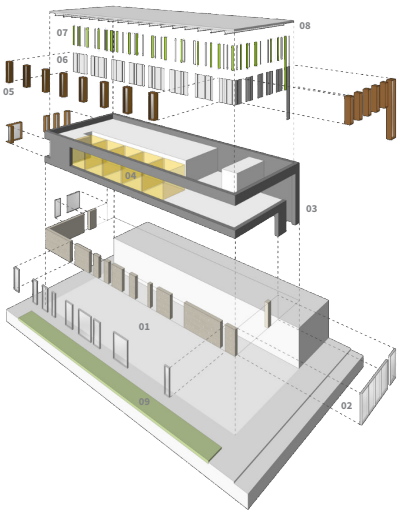
The new two-story building lobby takes patients up to the glazed entrance of the dental clinic, a carefully framed threshold that leads into the **light-filled waiting room** and features the tones and colors dominating the interior – shades of white and grey with occasional accents of green, all calibrated to tie into the clinic’s overarching graphic identity. The green-lacquered top of the entry cabinet, a low-slung toy chest with a retractable surface for kids’ activities, peels away from the base and turns into a linear, suspended soffit that connects the reception area with the wood-paneled consultation room located in the center of the clinic.

The ceiling plane, skim-coated to achieve a smooth, high-sheen surface that contrasts the industrial appearance of the exposed roof trusses above, guides patients from the waiting room to the seven individual operatories, their entries marked by green vertical panels and a corresponding sequence of thin lighting strips. Together, they set up a **rhythm of protruding, vertical lines that visually animate the hallway space**. Sliding glass panels assure separation and HIPAA-required privacy during procedures without significantly reducing the amount of **natural light that can filter through the operatories into the central corridor and beyond**.



"The reception's monolithic, dark-grey volume transforms into a thin, continuous ceiling plane that functions as the dental office's organizational back bone and establishes the central circulation spine."

Waiting Room



EXTERIOR INTERVENTIONS

Bayshore Dental
Whitefish Bay, Wisconsin

KEY

- Clinical
- Clinical Support
- Staff
- Staff Support
- Check-In / Waiting

KEY SPACES:

- ▶ Operatories (121 - 130sf)
- ▶ Central X-Ray (126sf)
- ▶ Consultation Room (86 sf)
- ▶ Sterilization (100sf)
- ▶ Laboratory (150sf)
- ▶ Staff Break Room (180sf)

DEPARTMENTAL GROSS SQUARE FOOT TAKE-OFFS

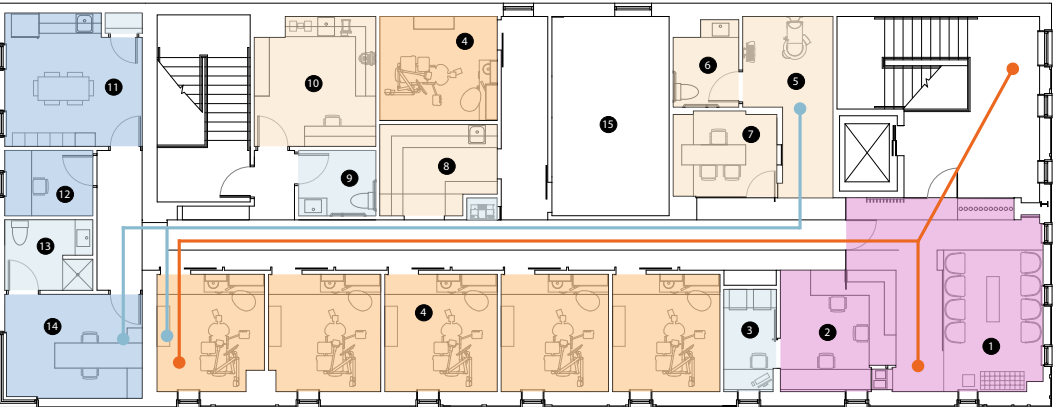
	Net	Gross	Multiplier
Dental Clinic	2,251 SF	3,299 SF	1.47

TRAVEL DISTANCE ANALYSIS

- Patient 30ft - 102ft
- Staff 15ft - 94ft

TRAVEL DISTANCE ANALYSIS

SECOND FLOOR PLAN



- | | | |
|----------------------|----------------------------|---------------------------|
| 1 Waiting Room | 6 Patient Restroom | 11 Staff Breakroom |
| 2 Check-In | 7 Consultation Room | 12 Staff Office |
| 3 Business Desk / IT | 8 Sterilization | 13 Doctor's Bathroom |
| 4 Operatories | 9 Staff Restroom / Lockers | 14 Doctor's Office |
| 5 Central X-Ray | 10 Laboratory | 15 Future Expansion Space |



STAIRWAY



RECEPTION / WAITING

AIA/AAH DESIGN AWARD WINNER

Category C: Renovations/Remodeled: Primarily built within existing hospital or clinical space.

JURY COMMENT

- ▶ This adaptive reuse project makes a huge improvement to the streetscape. It shows a thoughtful use of components, masterfully assembled and sensibly detailed. The exploded graphic supports the interpretation of this parti.
- ▶ Inside and out, the building feels clean, crisp, healthy and sophisticated, with simple colors and excellent daylighting. The long, thin windows give a sense of space; by extending to the floor, they provide a more pleasant experience for dental patients. The color detail around the windows provides additional interest. The white-dominated interior color scheme supports the visualization of tooth color.
- ▶ The jury's key thought for this project: Clean and crisp says healthy.



OPERATORY