

Focal Point Community Campus

Chicago, IL



SQ FT

11 Acre



OWNER/AFFILIATION

St. Anthony Hospital



ARCHITECT(S)

HDR



COMPLETION DATE

Under construction



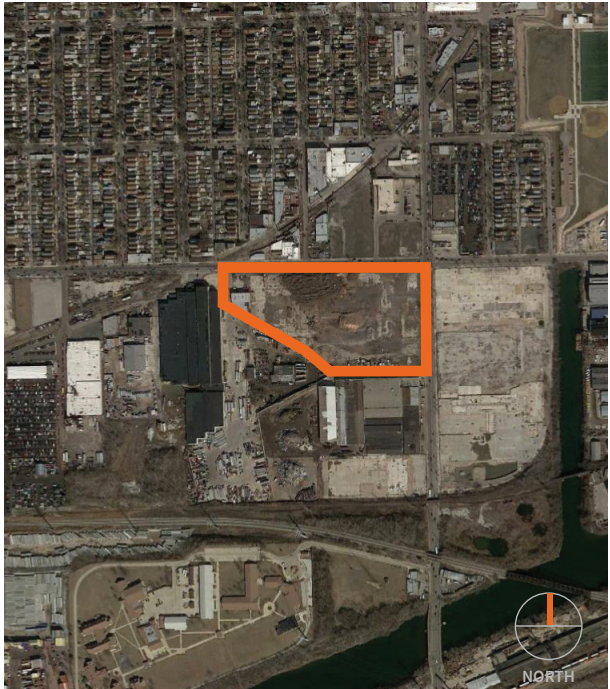
CAMPUS OVERVIEW



EXTERIOR VIEW



INTERIOR VIEW

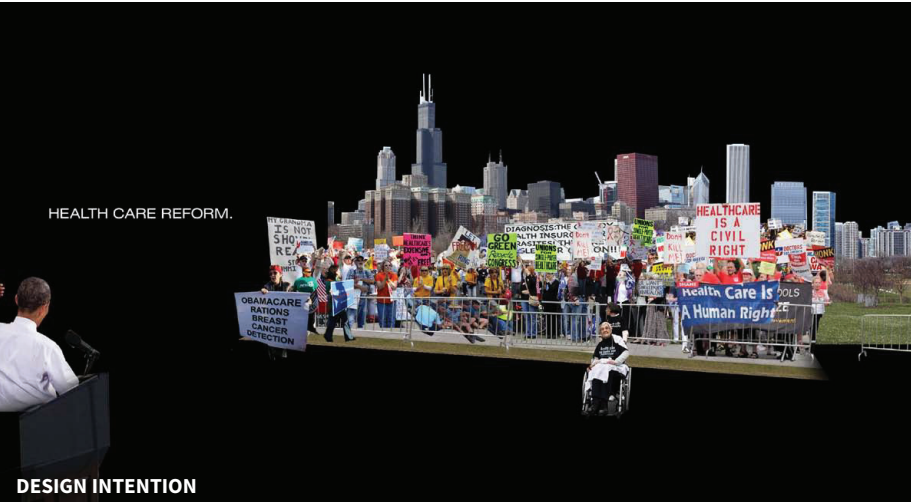


SITE MAP

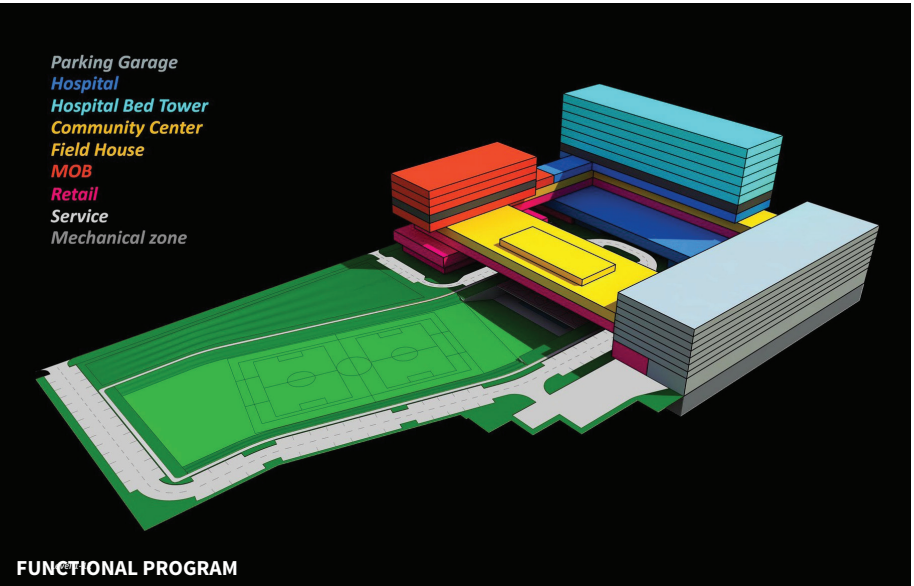
ABOUT | DESIGN INTENTIONS

Gone are the days of the monolithic hospital complex, looming above its neighbors. With the advent of public healthcare, hospitals can no longer be hermetically sealed from their surrounds; rather, they must embrace the communities in which they reside (shouldn't it have been this way, all along?).

The site, for Focal Point new hospital, affords a supreme opportunity for change. Located in Southwest Chicago, it is one of the most vibrant, yet blighted, neighborhoods in the city. **Acting as both an anchor and a change agent, the hospital is envisioned as an urban campus that fosters a relationship between the hospital and its community.**



DESIGN INTENTION



FUNCTIONAL PROGRAM

Focal Point Community Campus

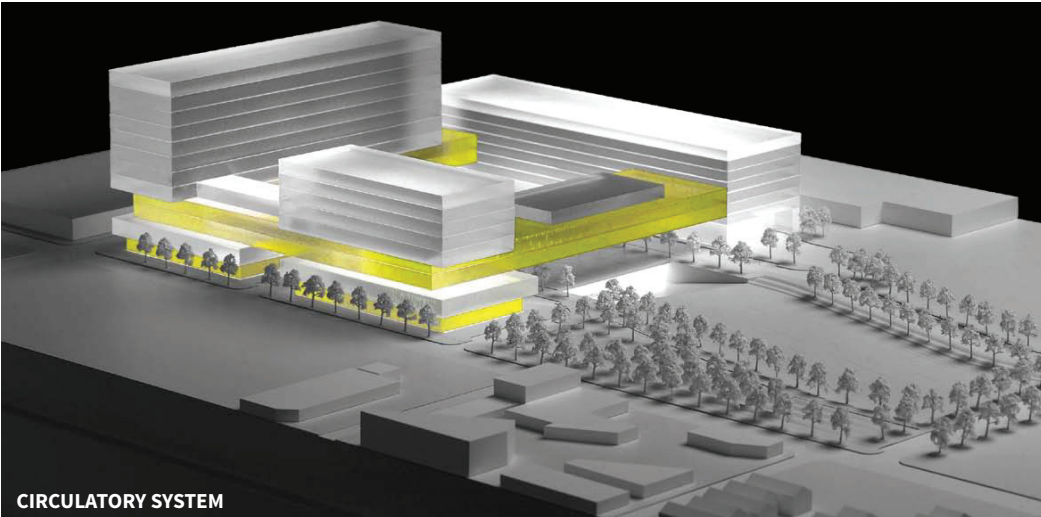
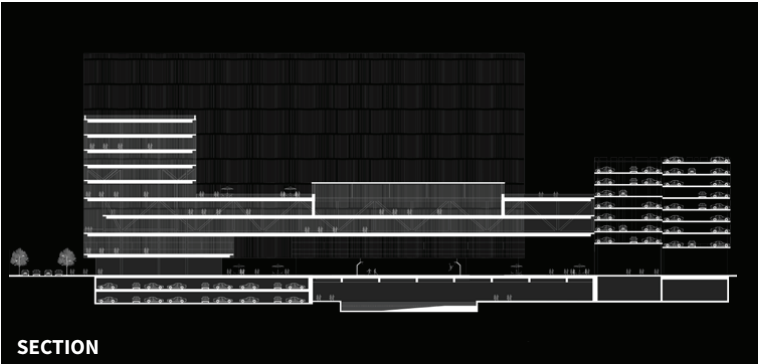
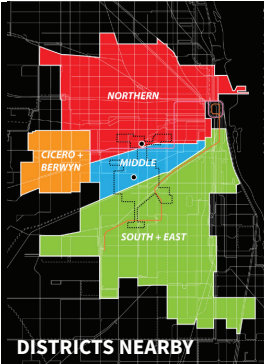
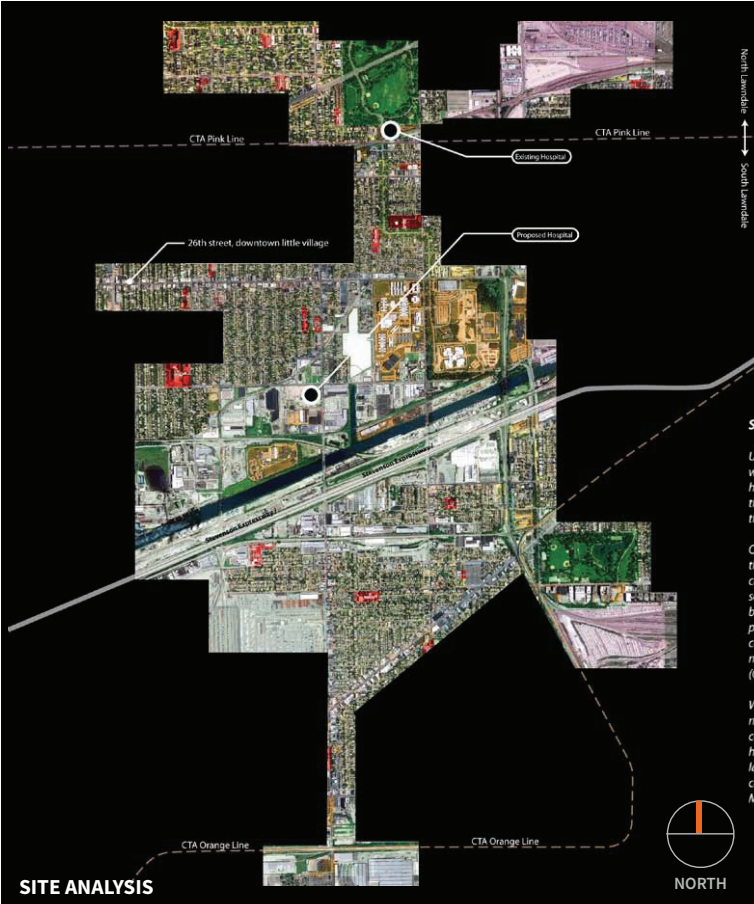
Chicago, IL

DESIGN STRATEGIES

Statement of the problem

Urban community hospitals in lower socio-economic areas are faced with numerous issues in today's healthcare arena. With pressure from healthcare reform and other outside sources, these hospitals often find themselves struggling to serve their communities while maintaining their growth and profits.

One approach to addressing these struggles rests in creating a hospital that becomes an extension of the community, a place where medical care, social services, and community outreach overlap. "...customizing services to meet the unique needs of specific populations to reduce barriers to care and address health disparities through staff education, physical environment redesigns and sustaining internal and external collaborations, including several relationships with community members, which maximize the impact of care delivery for all patients"



DESIGN STRATEGIES

Integrate the community

We are calling such a model the community-centric hospital. Although many hospitals provide community services beyond medical care, the community-centric hospital fully intertwines healthcare, wellness, and healthcare education with community and cultural components at a large scale. **The community is the client; the focus is on the collective or common good of the population instead of individual health.**

The hospital and its community are intrinsically linked by a “circulatory system” – a band of food and retail markets, fitness centers, etc. that runs along the third floor of the building. This system serves as the interface between the world of healthcare and the world beyond, and it literally brings the two together – a new paradigm in the industry. Furthermore, the building treads lightly on the site. Its ground floor is wrapped with glass and its grounds are replete with wellness gardens, soccer fields, and basketball courts. It only seems fitting that a hospital should become the heart of its community.

The building will tread lightly on the site with its ground floor wrapped with glass and grounds replete with wellness gardens and recreation areas.

Focal Point Community Campus

Chicago, IL

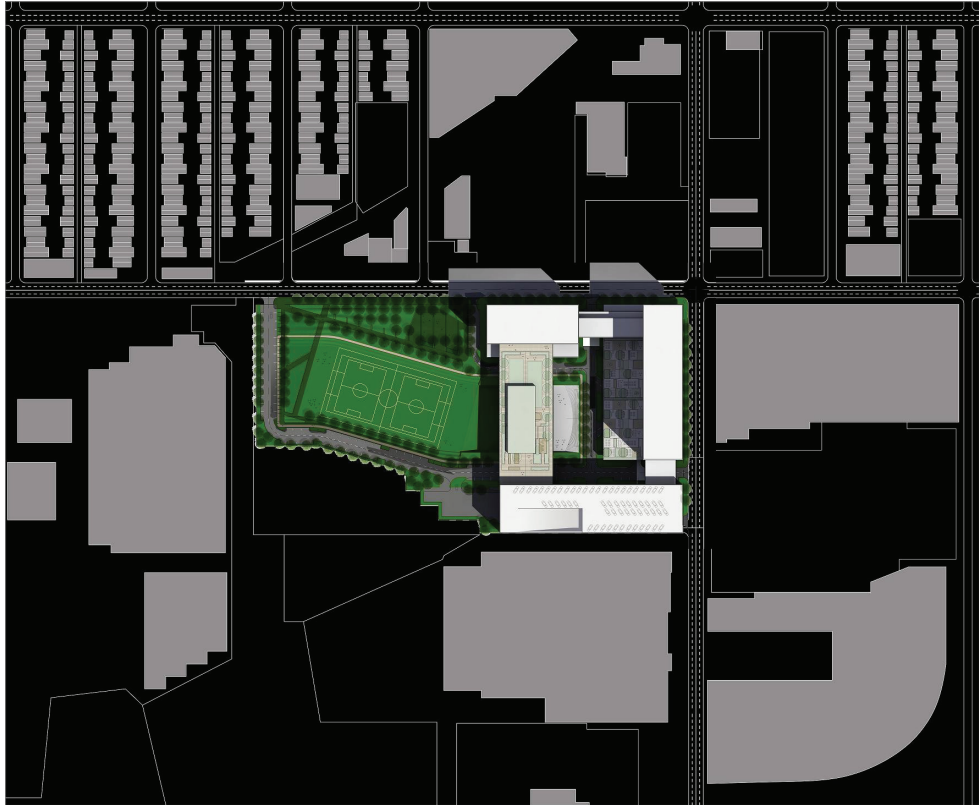
DESIGN STRATEGIES

Campus model

The campus will follow a breakthrough model that will make it a financially self-sustaining community. Through this model, rental income from revenue-generating tenants — such as retail stores and schools, hospitality and day care, a parking garage, an outpatient clinic and St. Anthony Hospital, which will relocate to serve as a tenant of the campus — will be reinvested into programs and services provided on site, including continuing education and wellness classes, a center for creativity and a park and recreation center.

Beyond being designed to provide the balance necessary to keep the model financially sound, each aspect of the campus was custom-selected based on research by Saint Anthony Hospital and HDR on the needs of the community. The new campus will transform the almost 11-acre vacant lot into an active complex offering a variety of services housed within a nearly 1 million square-foot complex, including three main buildings and an approximately 1,200 space parking garage.

SITE PLAN



AIA/AAH DESIGN AWARD WINNER

Category E: Master Planning Urban Design for Healthcare Settings

JURY COMMENT

- ▶ It is a strong concept with excellent master planning exhibited throughout. A model for integrating health care and health-related amenities into the community, and it is supported by the architect team's research
- ▶ The attempt to go beyond the norm of the healthcare monolith in this project is laudable. In this project the section tells the story. The public realm flows right into the campus and the hermetic hospital box is banished. This project represents a trend for health and community integration especially within urban environments.



COURTYARD



STREET VIEW



INTERIOR VIEW

FOCAL POINT COMMUNITY CAMPUS | CASE STUDY ANALYSIS