

AIA-AAJ Conference
Toronto, October
11, 2012

KMDARCHITECTS

“A NEW FACILITY TYPOLOGY
FOR WOMEN IN
DETENTION”
(and other related issues)

KMDARCHITECTS

It's time to expect

MORE

From our system...

And ourselves



Bastoy Prison, Bastoy Island, Norway



- Norway's largest low security prison: 120 inmates
- 35 guards during day / 4 guards at night
- Inmates not smalltime villains on first custodial sentence
 - Houses murderers/violent offenders
 - Unnerving to see access to knives/axes/chainsaws
- No cells, bars, gun, truncheons, CCTV
- 2 – 18 bedroom houses for 1 week orientation ("living training")
- Then to more private, spacious houses for general population



Bastoy Prison, Bastoy Island, Norway



- Each inmate has a job which he selects Monday through Friday:
 - Regular meal/work schedule until 2:30pm
 - Free to do what they want until 11:00 p.m. (when they must be in their quarters)
 - They have access to TV/Computers
- Rules: No Violence, No Alcohol, No Drugs
 - Break Rules: 2 small, hidden rooms with steel doors and blacked out windows
 - Back to “closed” prison (locked up 23 hours per day)
- No violent incidents/one escape



Arne Nilsen, Bastoy Prison Governor



“There will always be a need for conventional, high security prisons for people who simply are too damaged”

Halden Prison, Oslo, Norway



- Norway's 2nd largest prison; 252 inmates
- Individual, 130 Sq. Ft. cells (glorified dorm rooms) with En-Suite Bathrooms
- Divided into 10 – 12 units clustered around shared Living Room / Kitchen
- Access to Gym (with climbing wall), Public Lounge, Kitchen
- Jogging trails throughout the site
- Free-standing, two-bedroom house for family overnight visits



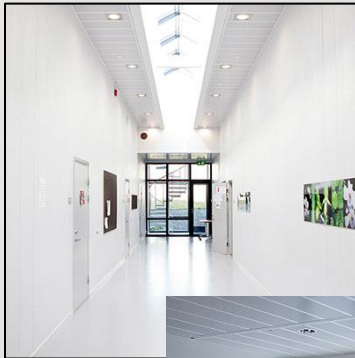
Halden Prison, Oslo, Norway



- “Occupational Training Centers” : includes Recording Studio / Teaching Kitchen
- Vast range of “formative” classes at official High School inside prison
 - I.T., Science, Catering, Music, Art, Handicrafts, several Sports
- Guards don’t carry guns (routinely eat meals/play sports with inmates)
- Non-institutional feel: no concrete; bricks/steel/larch
- One obvious symbol of incarceration: 20-foot fence around site.



Halden Prison, Oslo, Norway



Arne Nilsen, Bastoy Prison Governor



“Both society and the individual simply have to put aside their desire for revenge and stop focusing on prisons as places of punishment and pain”

Leoben Prison, Leoben, Austria



- Houses 200 inmates supervised by 3 guards
- One side of the prison has a block of prisoners on remand
- The other side is reserved for convicts
- Holds the standard run of felons
- Living Units called “Pods”: Groups of 15 one-person cells with floor-to-ceiling windows, private lavatories, and a common space which (like Halden) includes a kitchen
- Each room has a balcony



Leoben Prison, Leoben, Austria



- There is a Gym, a Prayer Room, a room for conjugal visits
- Noise is part of the chaos of prison life, the general racket that comes with holding large numbers of men in a confined space . . . but Leoben is serene.
- After 6 years of operation there are no signs of vandalism
- It would look like a college library except for the coils of razor wire along the top of the wall which surrounds the yard.



Leoben Prison, Leoben, Austria



Architect Josef Hohensinn



“Maximum security outside; maximum freedom inside. The more normal life we give them here, the less necessary it is to re-socialize them when they leave”

Leoben Prison

Leoben, Austria

Unachievable Paradigm?



Bastøy Prison



Halden Prison



Leoben Prison

Is this REALLY the answer?



The Research...

“The findings on the effects of prison conditions on recidivism, in short, are a matter of scholarly consensus”





“You go to prison as punishment. You don’t go to prison for punishment. The deprivation of your freedom, for an American, is punishment enough.”



...So what to do?

Joel Dvoskin, PhD, Former New York State Commissioner of Mental Health



“The current design of prison systems doesn’t work. Punishment can be effective in changing behavior but it only works in the short term and immediately after unwanted behavior happens...Overly punitive approaches used on violent, angry criminals only provide a breeding ground or more anger and more violence”

Larry Ard, Former Chief Deputy , Contra Costa County Sheriff's Department



Contra Costa County Adult Detention Facility
Martinez, California



Jerry Ademak, Former Director – Colorado Division of Youth Corrections



Rite of Passage Ridge View Academy
Aurora, Colorado



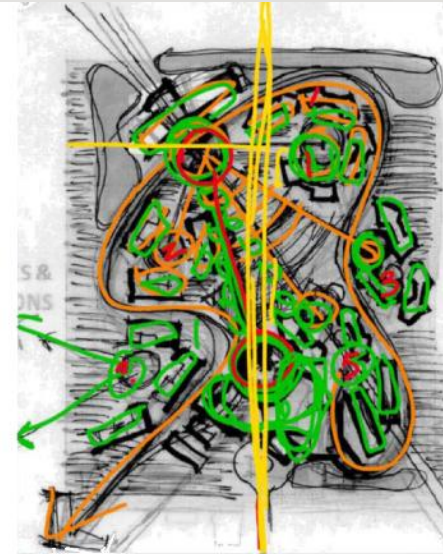
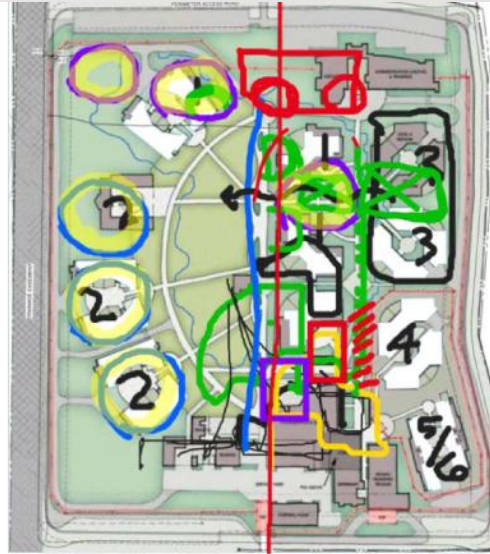
John Baldwin, Director of Iowa DOC

“ARCHITECTURE IS HUGE”

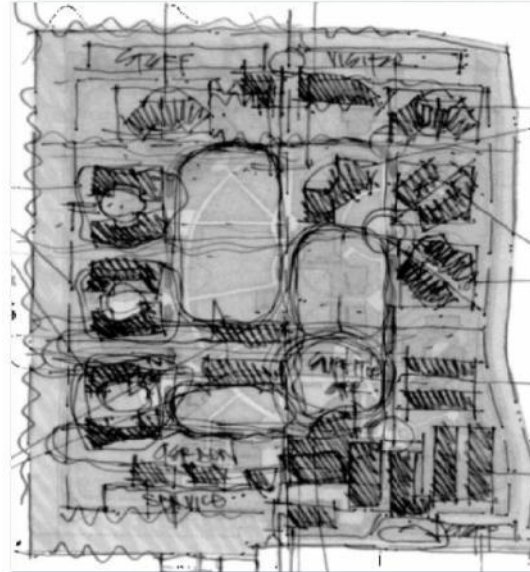
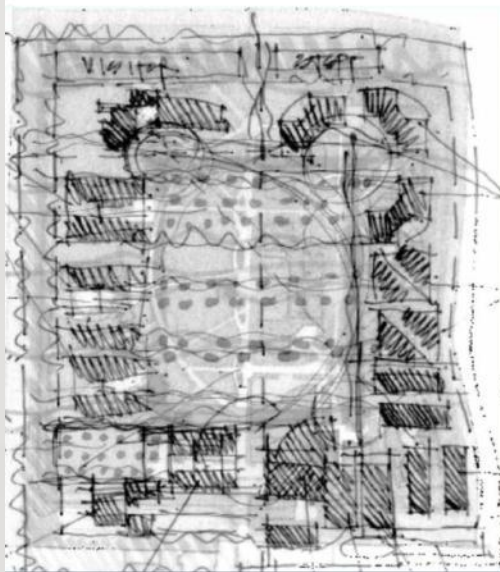
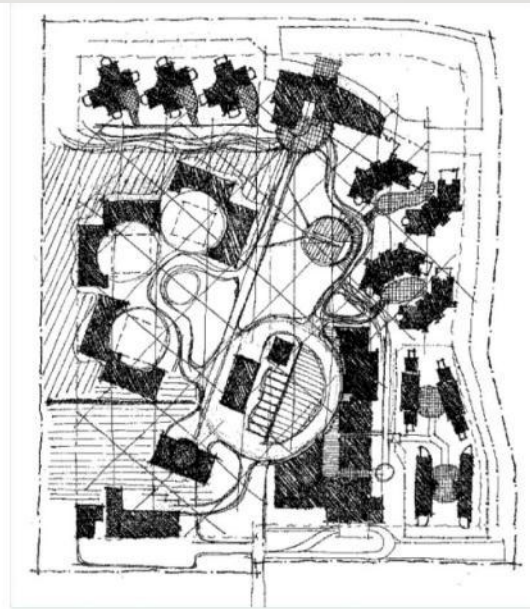
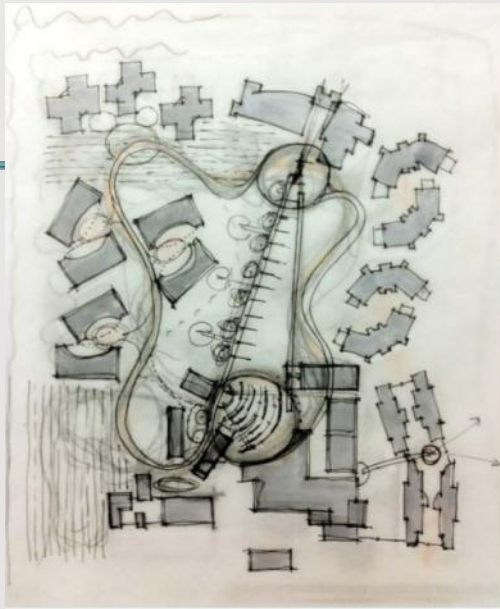




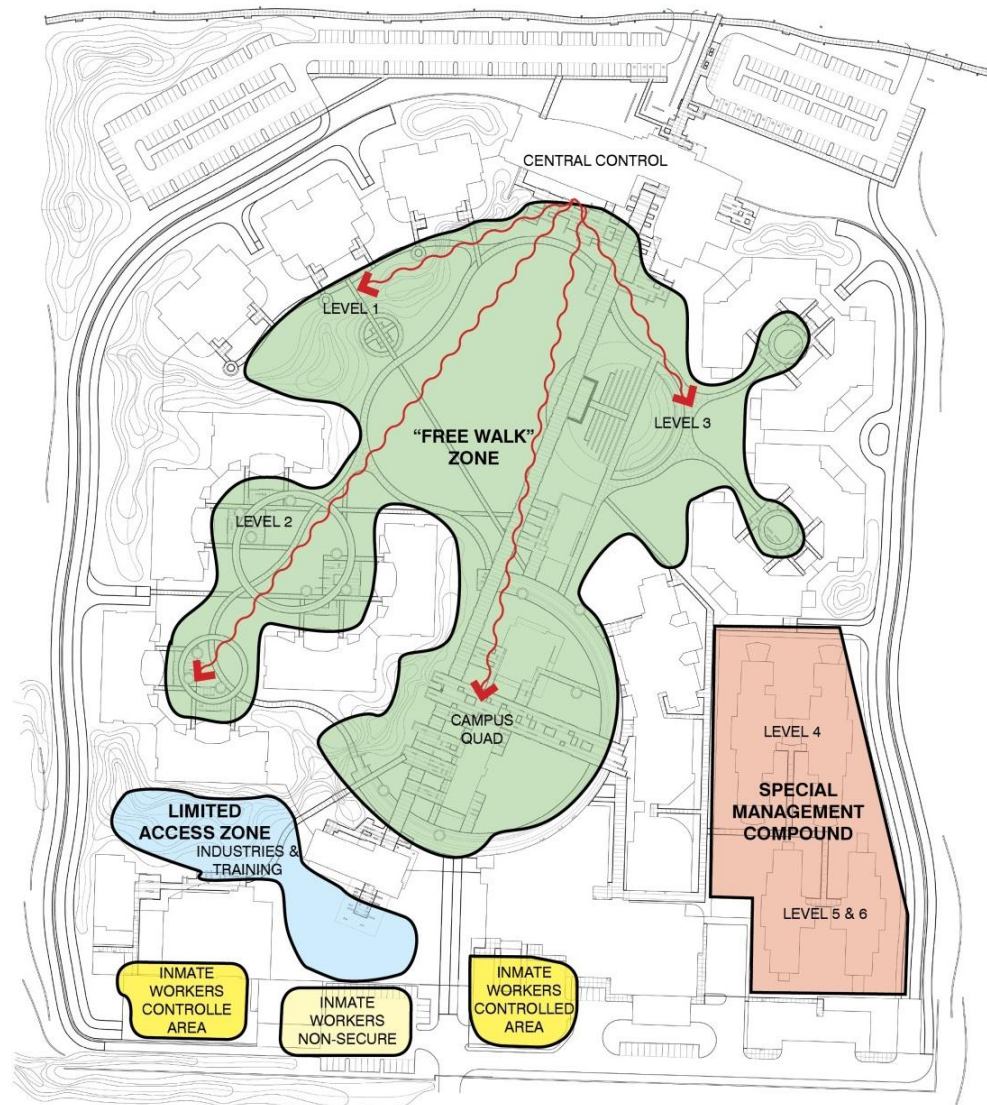
San Diego County Women's Detention Facility



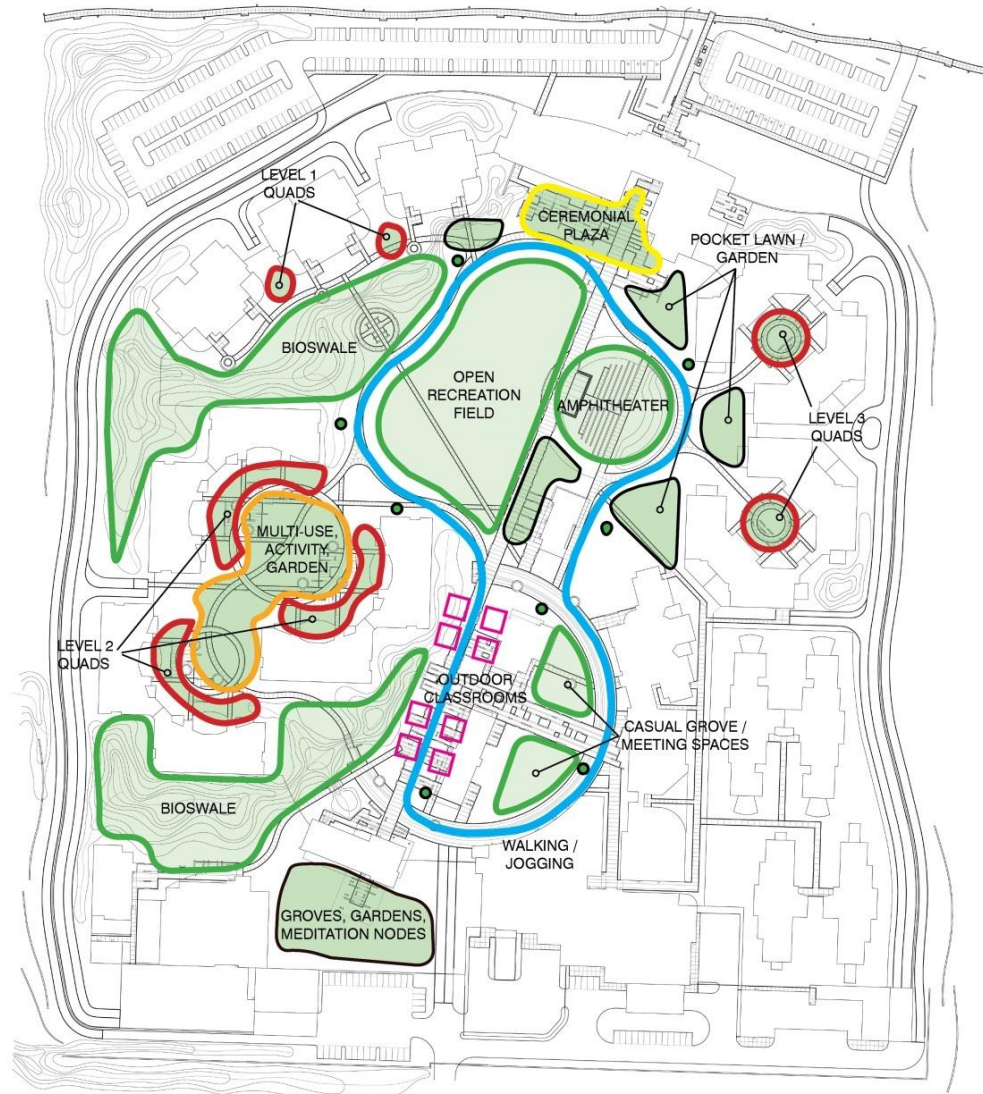
Project Evolution – Charette 1



Project Evolution – Charette 2



Inmate Access Zones



● Potential Par Course

Activity Opportunities & Nodes: Outdoor Programming



Overall Aerial View



The Green



The Spine



Landscape Amenity



The Amphitheater



The Commons & Academic Quad



Landscape Amenity



The Bioretention Garden



The Reflection Garden



Landscape Amenity











Level 1 Program Intensive Housing



Level 2 Minimum Security Housing



Level 2 Minimum Security Housing



Dining Room



San Diego County Women's Detention Facility

It's time to expect

MORE

From our system...

And ourselves



Stress Reduction – an Essential Characteristic

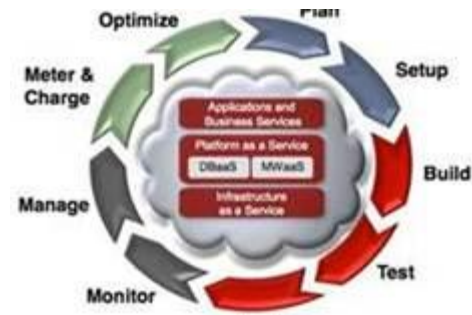


“I’ve always had this belief that what we do as architects is an art and a science, but also a social science, and that what we do can influence behavior”

- **Comprehensibility**



- **Manageability**



- **Meaningfulness**

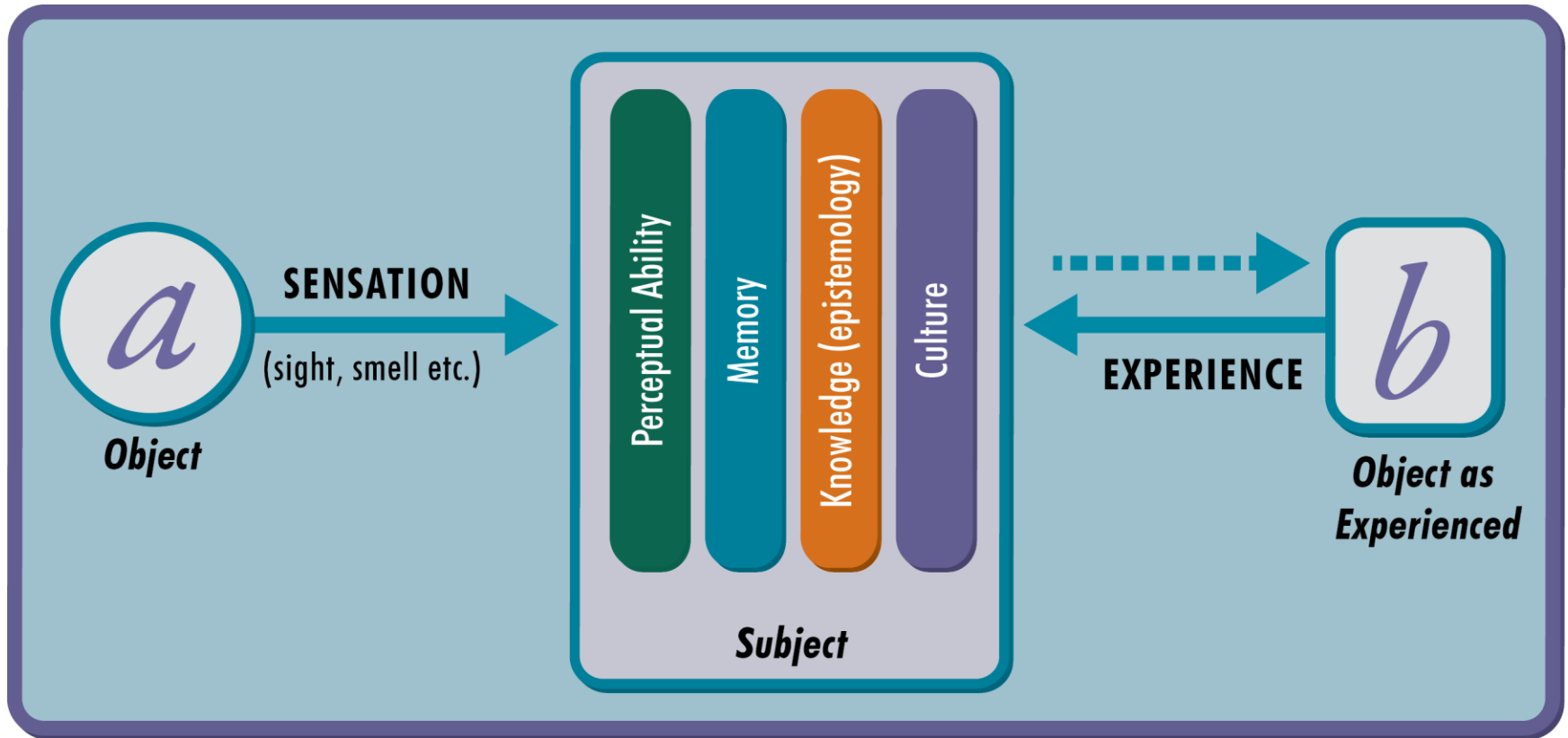




Community values are reinforced by Visual Cues in the environment that encourage appropriate behaviors.

VS







Contra Costa County Adult Detention Facility
Martinez, California



Larry Ard



Rite of Passage Ridge View Academy
Aurora, Colorado



Jerry Ademak



San Diego County Women's Detention Facility
Santee, California



San Diego County
Sheriff's Dept.

Expect More

Expect

MORE

MORE



Q & A

The San Diego County Women's Detention Facility