

The University of Arizona Cancer Center

Phoenix, Arizona



SQ FT
220,000 BGSF



OWNER/AFFILIATION
University of Arizona
and Dignity Health St.
Joseph’s Hospital and
Medical Center



ARCHITECT(S)
ZGF Architects



COMPLETION DATE
2015



ABOUT | DESIGN INTENTIONS

A deliberate layering of glass, copper-colored metal, and neutral stone forms the building’s architectural expression, which **directly relates to the patient experience- their comfort, privacy, and warmth, while simultaneously establishing the building’s unique identity on the campus.** Because the sun interacts differently with every side of the building, the double facade on the east and west is cloaked in an outer layer of folded, perforated metal sunshades that protect the exam rooms and offices from the glare of the morning and evening sun, helping to control heat gain and providing a sense of privacy, while still allowing for unobstructed views. **These shades also represent a metaphoric blanket around the building, signifying a protective layer of warmth and healing for occupants.**



The University of Arizona Cancer Center

Phoenix, Arizona

STRATEGIES

Daylighting

All exam and treatment rooms have access to daylight.

See-through exterior screens shield areas that have harsh sunlight to provide daylighting while still considering patient comfort.

Views to Nature

The facility has floor-to-ceiling windows on all sides of the building that look to its exterior garden spaces.

Warmth and Hospitality

The materials and furnishings were specifically picked so the building would seem more like a hotel or spa than a medical facility.

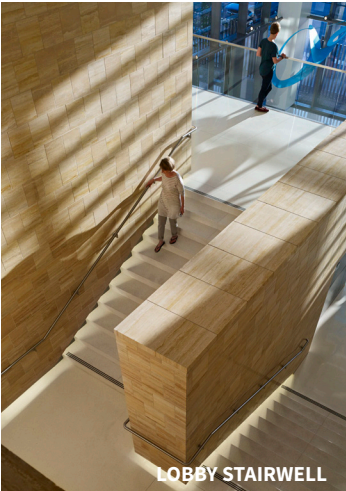
Desert Palette

Creams, tans, and browns are used as a primary color scheme to match the surrounding landscape.

Travertine stone is used for both exterior and interior elements.

“symbolize a protective layer of warmth and healing to those within”

[Daylighting and Views to Nature]



LOBBY STAIRWELL



INFUSION AREA



MAIN LOBBY



HALLWAY TO PHARMACY



PATIENT WAITING AREA



REGISTRATION



RADIATION THERAPY

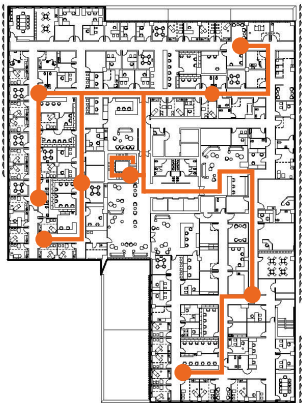


EXTERIOR PATIO

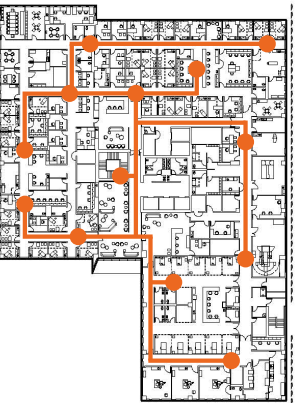
TRAVEL DISTANCE ANALYSIS:

+From entrance to main registration:	23 ft
+From main registration to radiology:	126-276 ft
+From main registration to radiation oncology:	118-190 ft
+From main registration to second floor registration:	236 ft
+From second floor registration to infusion therapy:	132-213 ft
+From second floor registration to pharmacy:	108 ft
+From second floor registration to survivorship:	99-162 ft
+From main registration to third floor entry:	279 ft
+From third floor entry to gynaecology:	127-184 ft
+From third floor entry to breast program:	156-225 ft
+From third floor entry to radiology:	113-193 ft
+From third floor entry to dermatology:	184-302 ft
+From main registration to fourth floor entry:	340 ft
+From fourth floor entry to gastrointestinal:	147-263 ft
+From fourth floor entry to head and neck:	126-203 ft
+From fourth floor entry to genitourinary:	55-116 ft
+From fourth floor entry to thoracic:	92-152 ft
+From fourth floor entry to interventional radiology:	117-184 ft
+From fourth floor entry to prep/recovery:	92-194 ft
+From fourth floor entry to endoscopy:	137-194 ft

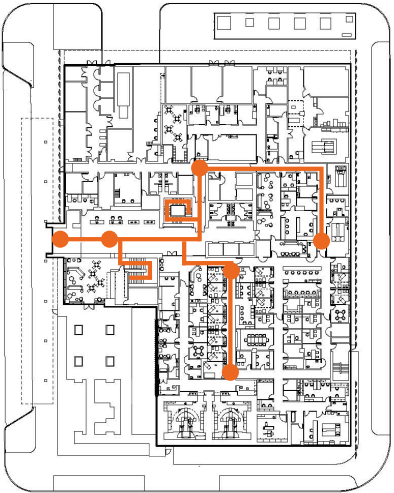
FLOOR PLAN | ANALYSIS



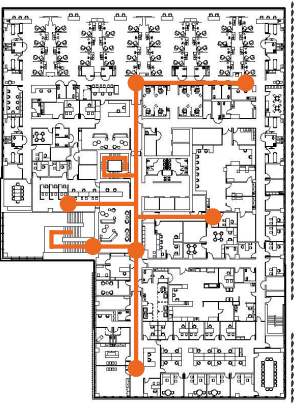
LEVEL 3



LEVEL 4



LEVEL 1



LEVEL 2

KEY:
Circulation Path



NORTH

The University of Arizona Cancer Center

Phoenix, Arizona

DEPARTMENT PLAN KEY:

- Welcome Desk
- Cafe
- Radiology
- Dry Research
- Radiation Oncology

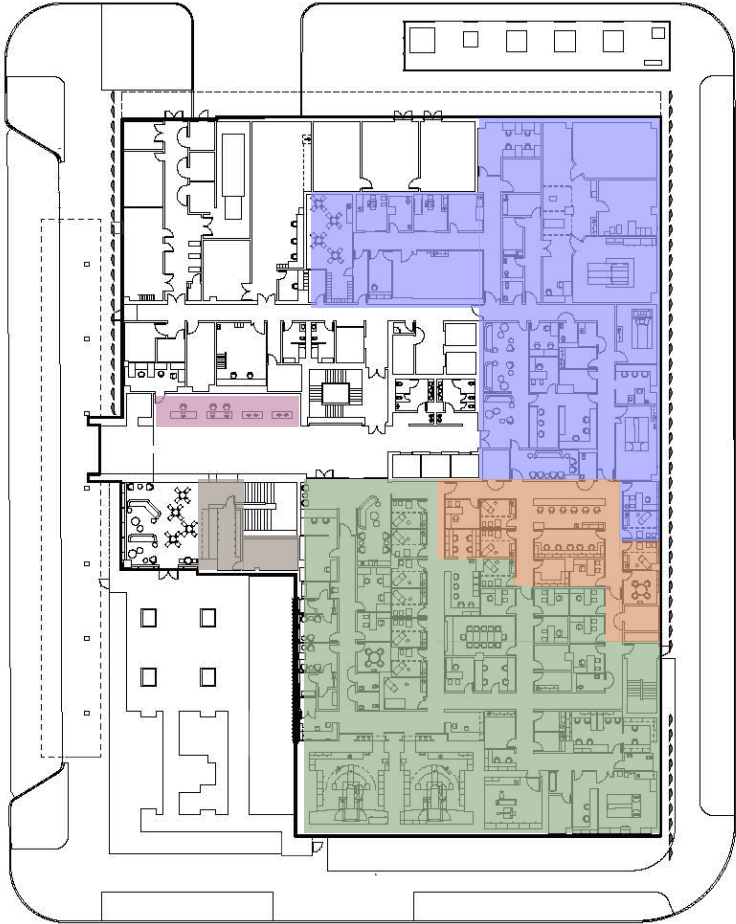
KEY SPACES:

- Linear Accelerator Room (702 sf)
- Office (130-140 sf)
- Dry Research Room (130-140 sf)

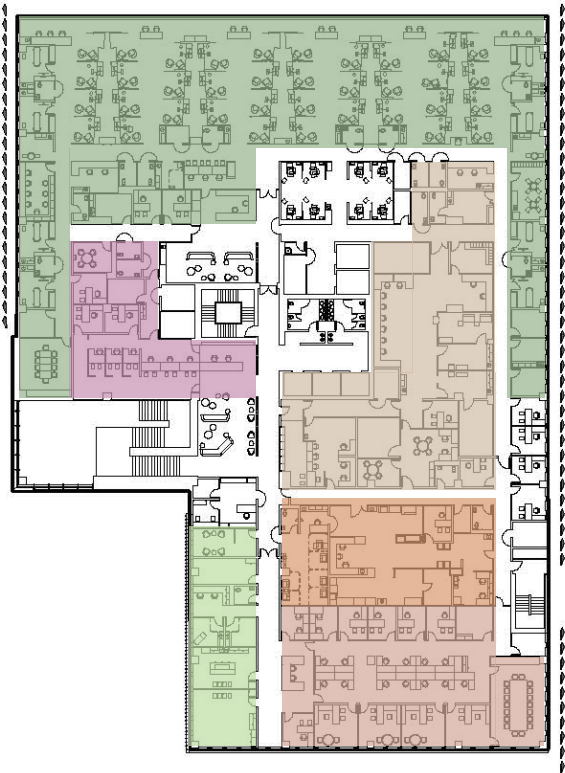
DEPARTMENTAL SQUARE FOOT TAKE-OFFS

	Net	Gross
Radiology	8856 SF	10653 SF
Dry Research	1920 SF	2843 SF
Radiation Oncology	10559 SF	13241 SF

LEVEL ONE:



LEVEL TWO:



DEPARTMENT PLAN KEY:

- Infusion Therapy
- Registration
- Pharmacy
- Survivorship Program
- Laboratory
- Administration

KEY SPACES:

- Infusion Therapy Bay (75-80 sf)
- Registration Desk (50-60 sf)
- Lab Offices (120-130 sf)
- Physician Offices (225-230 sf)

DEPARTMENTAL SQUARE FOOT TAKE-OFFS

	Net	Gross
Infusion Therapy	10692 SF	14084 SF
Pharmacy	4979 SF	6799 SF
Survivorship	1811 SF	2219 SF
Laboratory	1628 SF	3160 SF
Admin	3985 SF	4705 SF

The University of Arizona Cancer Center

Phoenix, Arizona

DEPARTMENTAL PLAN KEY:

- Gynecology Program
- Breast Program
- Radiology
- Supportive Care
- Dermatology

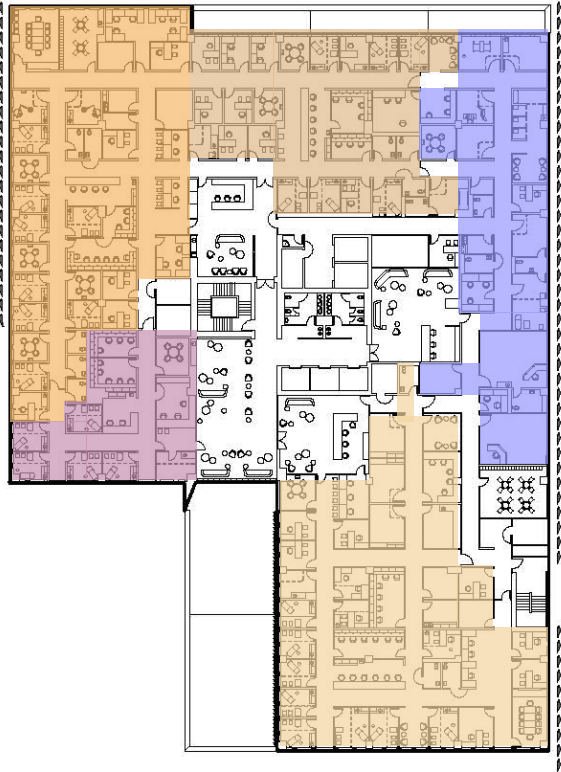
KEY SPACES:

- Exam Rooms (130-140 sf)
- Meeting Space (130-135 sf)
- Waiting Space (1000-1040 sf)

DEPARTMENTAL SQUARE FOOT TAKE-OFFS

	Net	Gross
Gynecology	6307 SF	8106 SF
Breast	4308 SF	5677 SF
Radiology	4197 SF	5368 SF
Dermatology	6700 SF	9301 SF

LEVEL THREE:



AIA/AAH DESIGN AWARD WINNER

Category: Built, less than \$25 million in construction cost

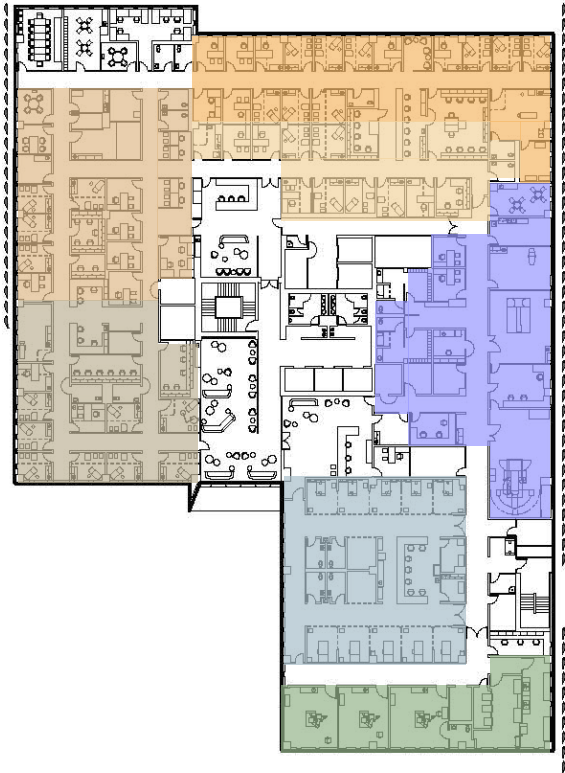
JURY COMMENT:

- The articulated metal screens on the east and west façades offer an appropriate climatic response, transparency and a strong visual identity to the building.
- The Jury appreciated dappled effect of light on a well-detailed central stair. Interior spaces are clean and well composed.
- The use of wood with stone adds warmth and comfort. Moveable patterned glass screens in the infusion space offer privacy or an opportunity for socialization.

PROJECT SUMMARY

Project: The University of Arizona Cancer Center (UACC) at Dignity Health St. Joseph’s Hospital and Medical Center
Project location: Phoenix, Arizona
Owner/Client: The University of Arizona
Architect: ZGF Architects LLP
Landscape architect: Wheat Design Group, Inc.
Structural engineer: Martin, White & Griffis Structural Engineers, Inc. / John A. Martin & Associates, Inc.
Civil engineer: Dibble & Associates Consulting Engineers
MEP engineer: Affiliated Engineers, Inc.
Acoustical / Vibration engineer: Colin Gordon Associates, Inc.
Lighting design: Francis Krahe & Associates, Inc.
Environmental design: Atelier Ten USA LLC
Contractor: Hensel Phelps Construction Company
Code (Fire / Life Safety / ADA) Consultant: Jensen Hughes, Inc.
Vertical transportation consultant: Lerch Bates Inc.
Photographs/Illustrations: Nick Merrick / Tom Harris / Hedrich Blessing Photographers
Construction cost: \$87,000,000
Building area GSF: 220,000 GSF
Construction start date: February 2013
Substantial completion date: June 2015

LEVEL FOUR:



DEPARTMENTAL PLAN KEY:

- Gastrointestinal Program
- Head and Neck Program
- Genitourinary Program
- Thoracic Program
- Interventional Radiology
- Prep/Recovery
- Endoscopy

KEY CLINICAL SPACES:

- Exam Rooms (120-130 sf)
- Prep/Recovery Bay (150- 160 sf)
- Endoscopy Rooms (430-450 sf)
- Admin Space (180 -200 sf)

DEPARTMENTAL SQUARE FOOT TAKE-OFFS

	Net	Gross
Gastrointestinal	3810 SF	4589 SF
Head and Neck	3726 SF	4903 SF
Genitourinary	2428 SF	3361 SF
Thoracic	2798 SF	3993 SF
Interventional Radiology	4401 SF	5425 SF
Prep/Recovery	2870 SF	4872 SF
Endoscopy	2448 SF	2877 SF