

Bridgepoint Active Healthcare

Toronto, Ontario, Canada



SQ FT
680,000 BGSF



OWNER/AFFILIATION
Bridgepoint Health



ARCHITECT(S)
Stantec Architecture/
KPMB Architects/ HDR
Architecture/Diamond
Schmitt Architects



COMPLETION DATE
June 2013



SECTION THROUGH RENOVATED 148-YEAR-OLD DON JAIL



FACADE DETAIL



RENOVATED DON JAIL

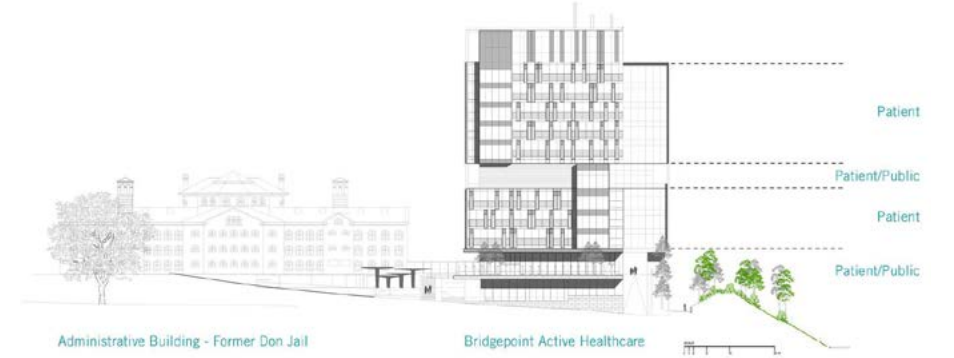


SITE MAP

ABOUT | DESIGN INTENTIONS

Bridgepoint Active Healthcare is Canada's leader in complex care and rehabilitation. **The 10-story, 472-bed hospital is the largest healthcare facility of its kind in Canada** and the only organization dedicated to people living with complex chronic disease and disability.

Using space already available, the adjacent 148-year-old Don Jail was readapted into the hospital's administrative and education center. The restoration is emblematic of **Bridgepoint's commitment to transformative rehabilitation**—giving new life to an important Toronto landmark.



NORTH ELEVATION



SOUTH ENTRANCE