

Cultural Context



CATTLEYARD SHADE STRUCTURE



EXISTING SITE . ALFAFLA FIELD



ADJACENT CATTLEYARD



AK-CKIN INDIAN BASKET



AK-CHIN INDIAN SHADE STRUCTURE



BUTTERFIELD STATION . PRE-RAILROAD STAGECOACH STATION



Known for its history as a pre-railroad stagecoach town, the town of Maricopa has balanced its agricultural and Native American identities for the past century. Most recently Maricopa, a community 40 miles south of Phoenix, has been chronicled by the NY Times as a bedroom community boomtown gone bust. Central Arizona College has made an investment in the community and is betting on its future. This campus represents a glimmer of hope in an area struck by the national recession.



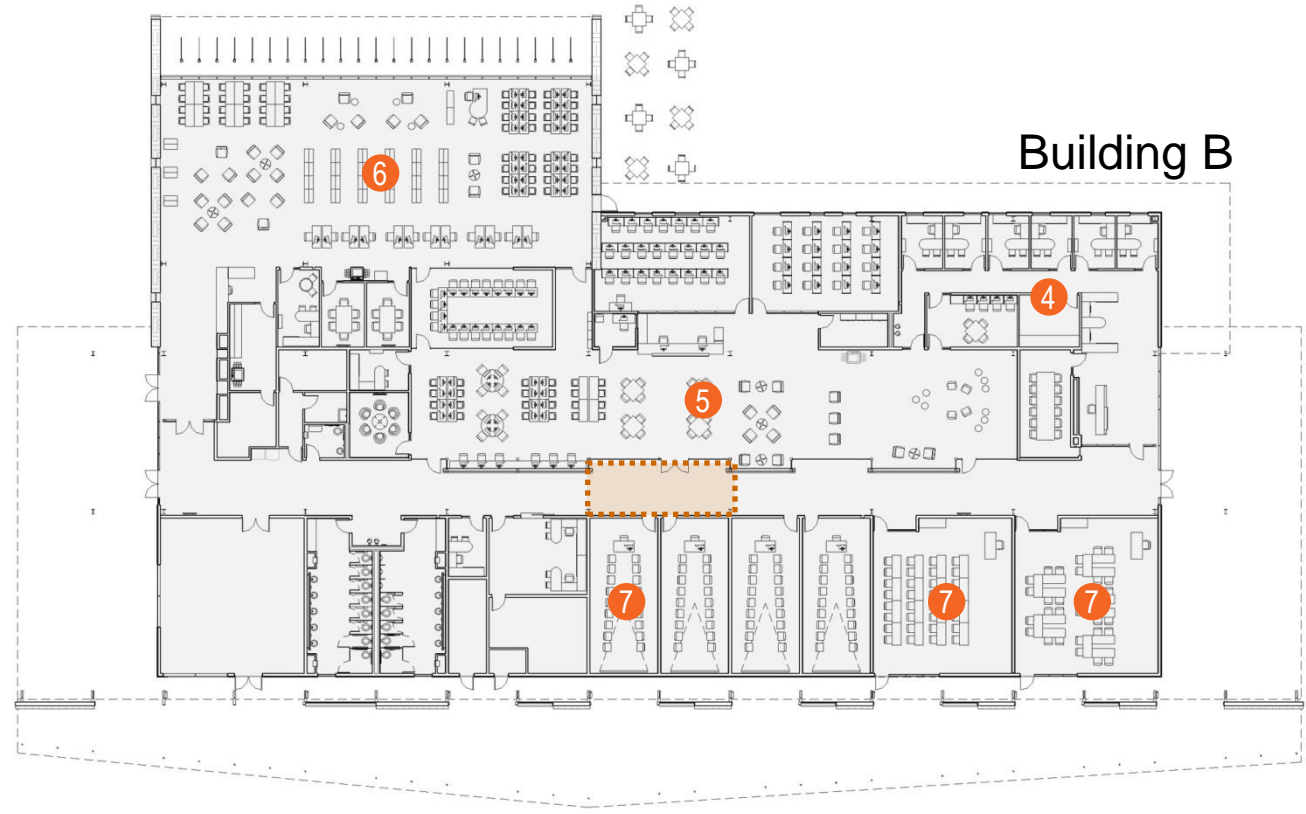
- 1 Building A
- 2 Building B
- 3 Building C
- 4 Central Plant
- 5 Main Entry
- 6 Main Dropoff
- 7 Breezeway
- 8 Graduation Field
- 9 Amphitheater
- 10 South Shade Arcade

Plans

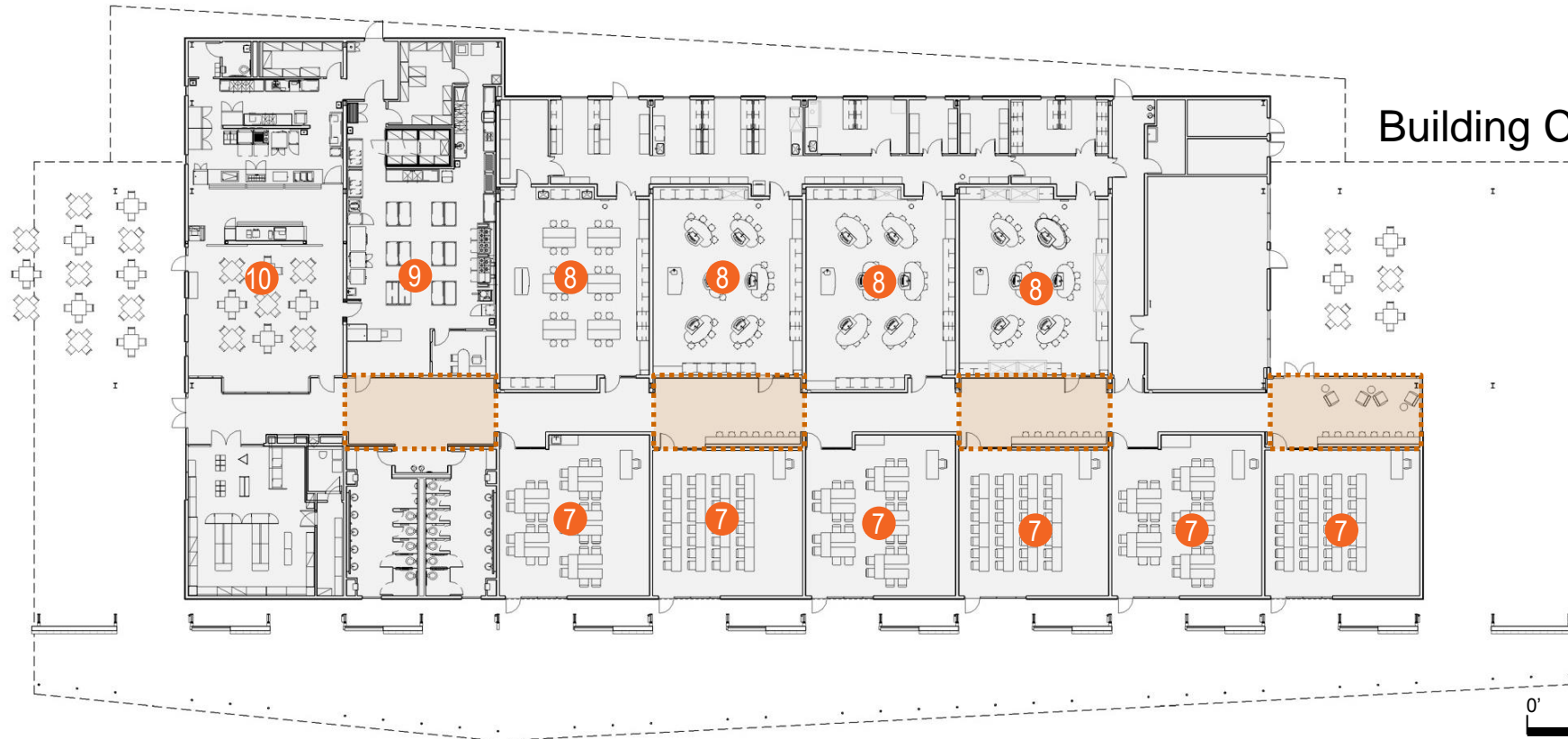
Building A



Building B



Building C



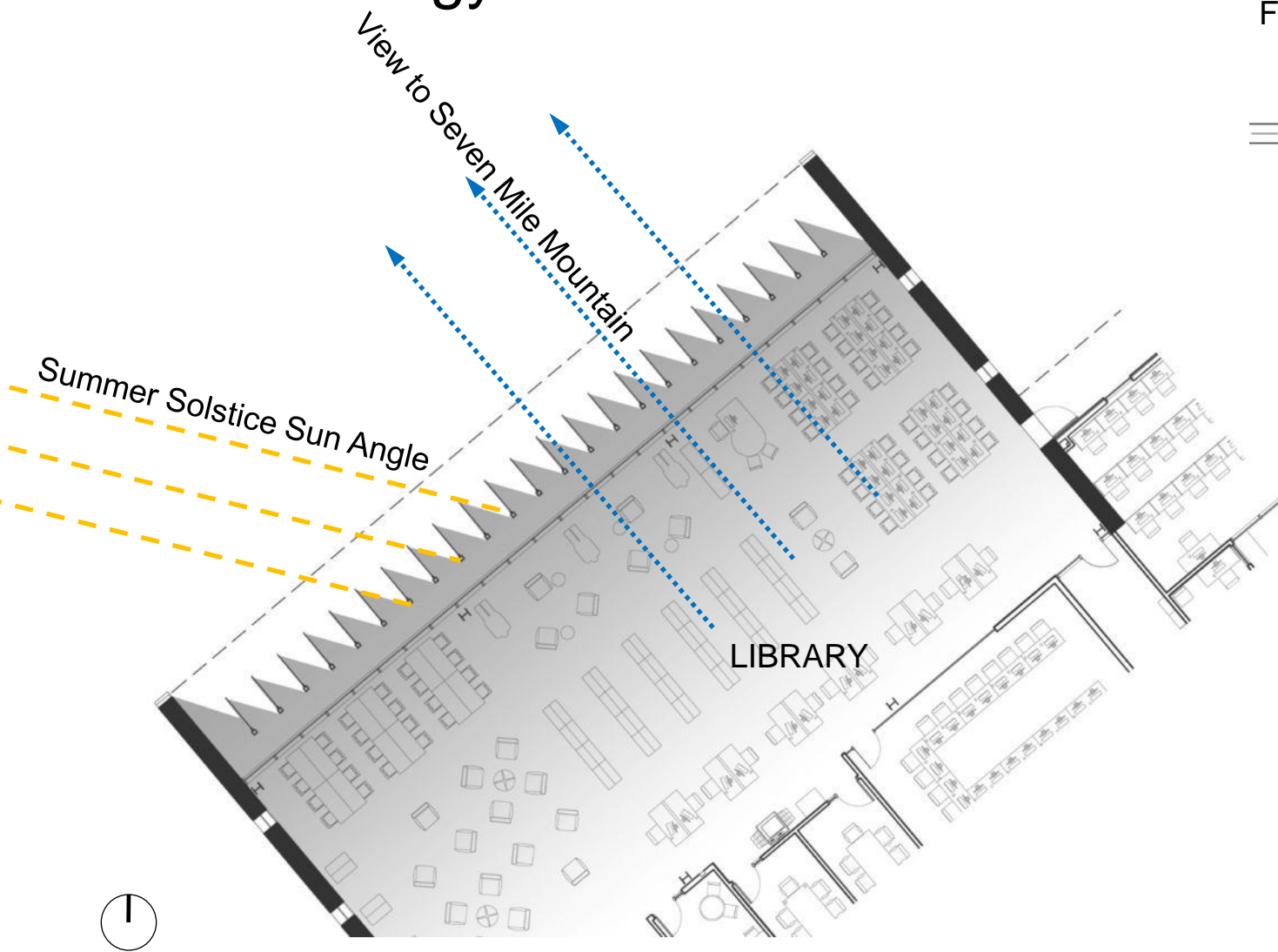
- 1 Community Room
- 2 Student Services
- 3 Student Services
- 4 Admin + Faculty Office Areas
- 5 Learning Center
- 6 Library
- 7 Classrooms
- 8 Teaching Laboratories
- 9 Culinary Kitchen
- 10 Cafeteria
- Daylight Scoop

Campus Arrival

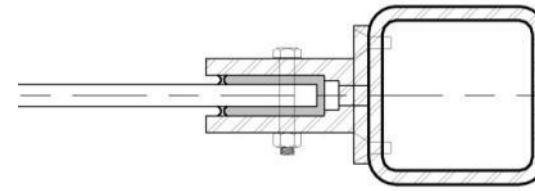


The main campus entry acts as a beacon for the community, promoting education and community based activities. A new campus language is born out of its unique desert context, a model for the campus of the future.

Views vs Energy



FIN DETAIL



Large frosted glass shade fins are designed to completely protect the building envelope at the summer solstice, while allowing views to the mountains beyond for both the library and the community room.

1" laminated glass fins
cantilevered from
structural steel tube



Campus Portals

Reaching out to the community and gesturally inviting the community in, the library and community rooms frame the campus entry with two iconic desert portals.



Passive Sectional Strategies



Each building strategically turns its back to the harsh desert southern sun, while harvesting northern daylight and creating a continuous shaded arcade on the south that connects the campus' classrooms end to end.



Making Campus

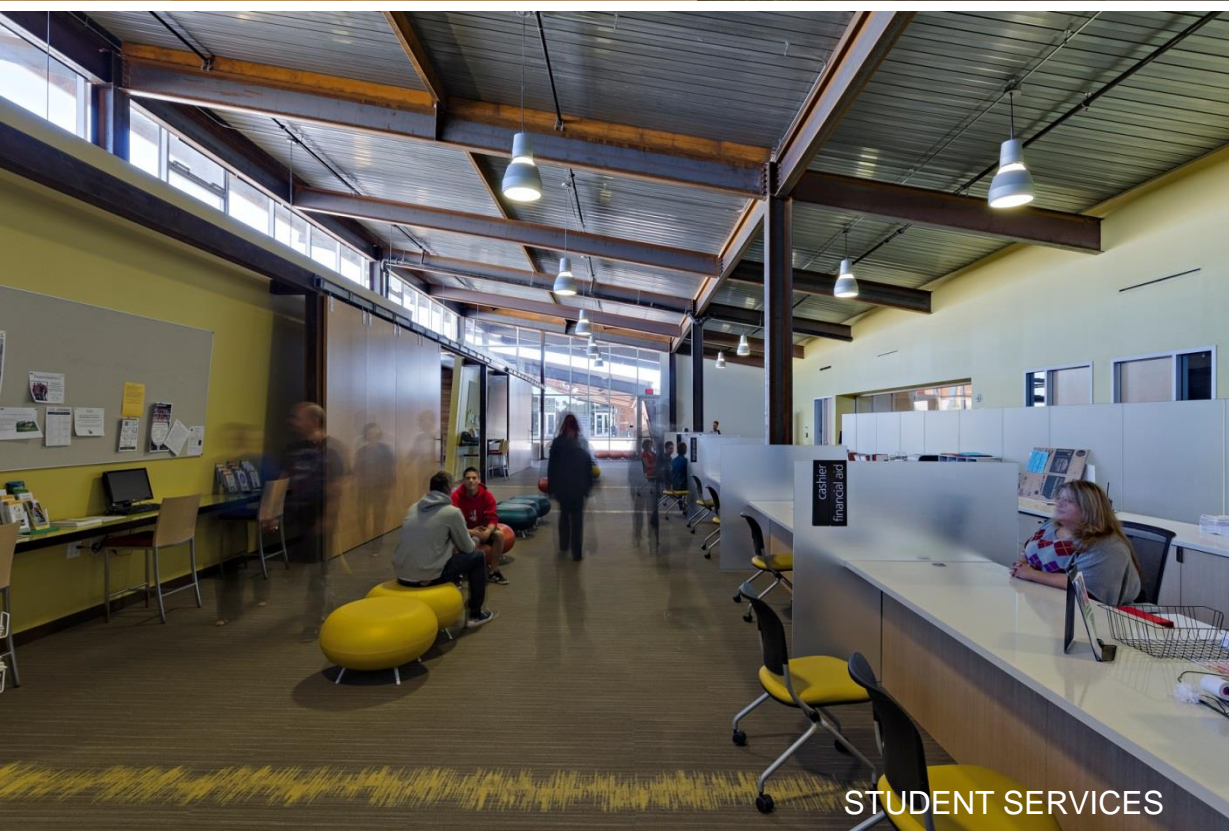


Thirty feet overhangs create shaded outdoor student spaces adjacent to a newly crafted amphitheater. Large outdoor fans create air movement to enhance personal comfort. R-30 walls and R-40 roofs create a super insulated high performance envelope.

Flexible Shed



LEARNING CENTER



STUDENT SERVICES

Rolling barn doors and minimal wall partitions organize interior volumes that are planned to be modular and easily removable when expansion and renovation occur in the future.



Daylit Learning Environments

Each instructional environment is offered diffuse daylighting via strategically located glazing and clerestory.

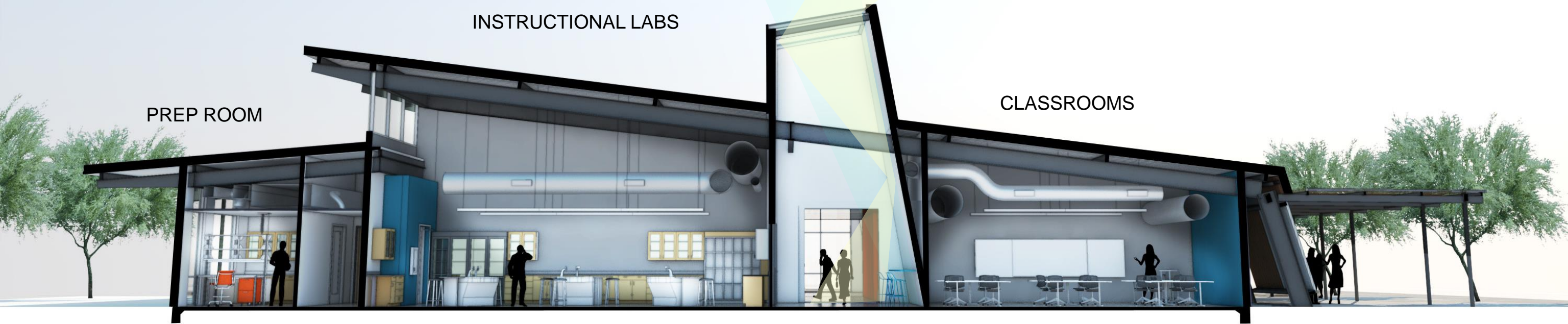


30 SEAT CLASSROOM



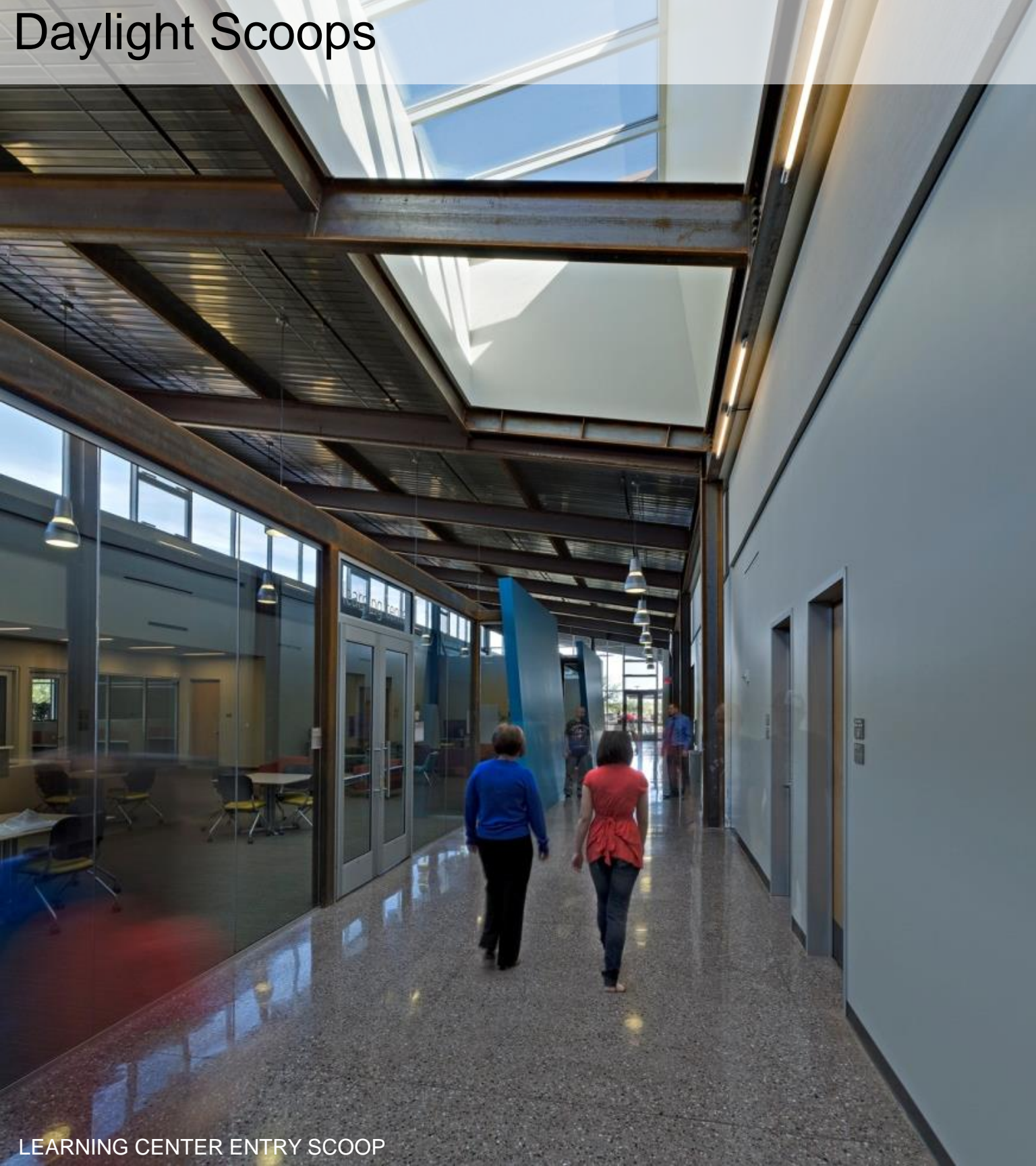
SCIENCE LABORATORY

Daylight Scoops



Four large light scoops flood the main student corridor with daylight in the instructional building, also aiding in 'rural wayfinding' for the one story campus that is still 'out in the middle of nowhere.'

Daylight Scoops

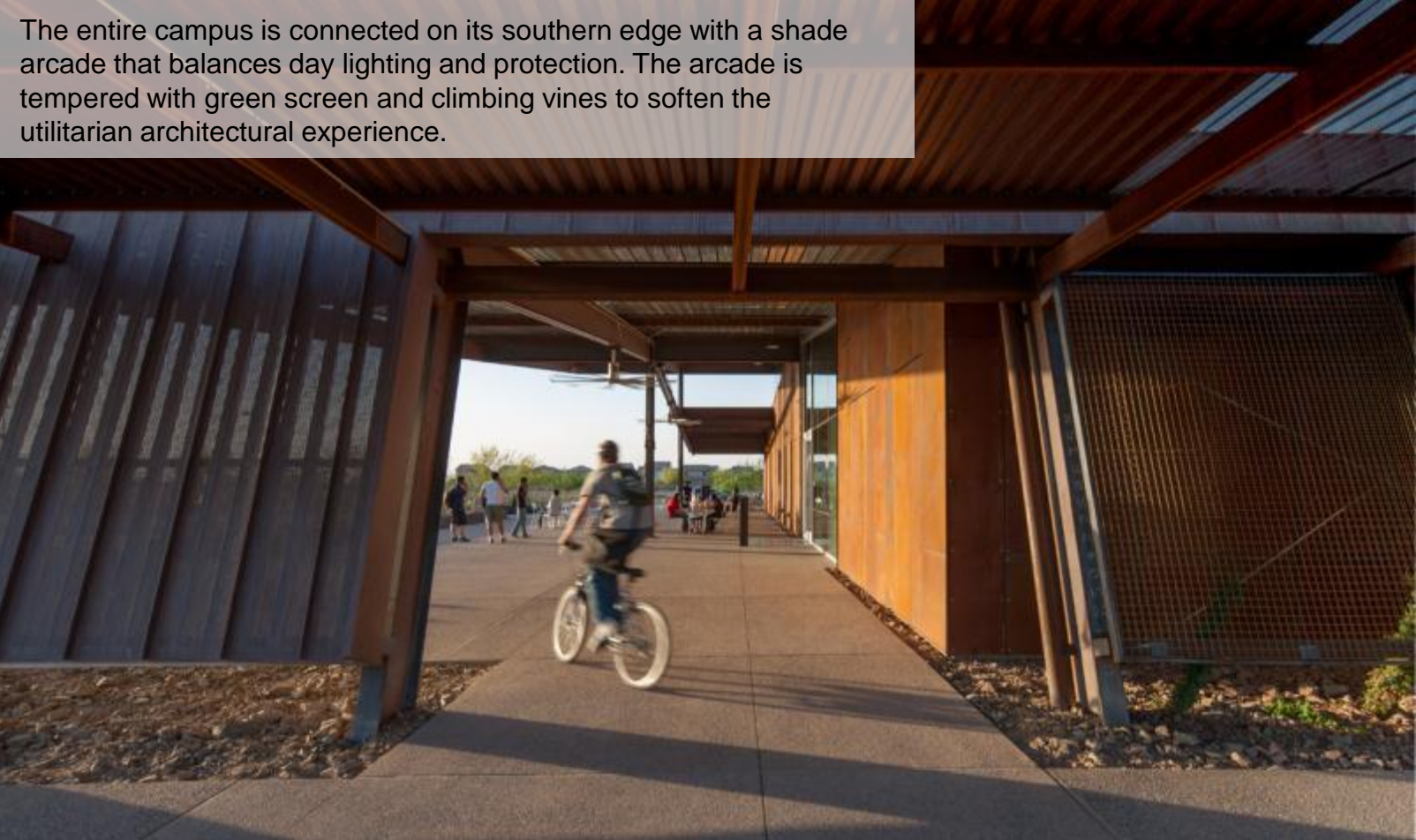


LEARNING CENTER ENTRY SCOOP



MAIN CORRIDOR SCOOPS AT CLASSROOMS/LAB BUILDING

Architecture of Shade



The entire campus is connected on its southern edge with a shade arcade that balances day lighting and protection. The arcade is tempered with green screen and climbing vines to soften the utilitarian architectural experience.



SHADED COLONNADE



DRIP DETAIL AT CORTEN STEEL PANELS



LIBRARY WITH FRAMED MOUNTAIN VIEWS



CAMPUS AMIDST AGRICULTURAL FIELDS AND MOUNTAIN VIEWS



The structures metaphorically grow out of the desert floor, and are sited to capture dramatic views to the Sierra Estrellas. The light scoops aid in way finding for this new desert campus.

Community Magnet



The main campus entry acts as a beacon for the community, promoting education and community based activities. A new campus language is born out of its unique desert context, a model for the campus of the future.



The main entry quad is framed by the campus' main public functions. A continuous shade canopy provides shade for students moving from building to building.

