

Studio Dental II
San Francisco, California



SQFT
1400 DGSF
(130 m²)



OWNER/AFFILIATION
Studio Dental / Lowell
Caulder & Dr. Sara
Creighton



ARCHITECT(S)
Montalba Architects



COMPLETION DATE
2017



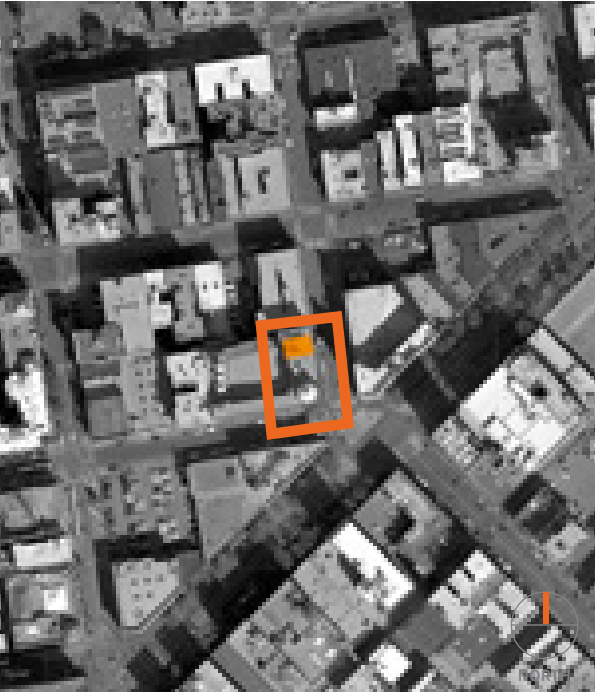
FRONT ELEVATION OF ENTRANCE



STYLISTIC SIGNAGE



ENTRANCE



SITE MAP

ABOUT | DESIGN INTENTIONS

Located on the ground floor of a historic building, the marriage of history and a **sleek, modern aesthetic creates a transcendent environment** that evokes a gallery. The design hinges on a **conceptual lantern** that from within the building's dark core **emanates luminosity and transparency**. Achieved through a series of wall panels that both light the building shell and brighten the storefront and street, **the lantern provides privacy while enlivening the community**.



TYPICAL OPERATORY