



LIGHTLAB NIGHTLAB

ecological urbanism experiences

LIGHTLAB and NIGHTLAB are three-week sessions to explore issues of ecology and urbanism from the perspective of light and the experience of it. These labs are open to those eager to collectively speculate upon the relationship of ecology and urbanism with the design of light.

In each three-week session participants will learn history, theory, design methods, and a design case study using the American Southwest and the city of Las Vegas. This program may be of interest to students and professionals in the arts, engineering, design, architecture, landscape and urban/urbanism fields. Attendees may enroll in one or both sessions and we welcome international participants.

PROGRAM SCHEDULE & COST

LIGHTLAB

June 24 - July 16

(participants may take travel break for July 4 holiday)

\$3000

NIGHTLAB

July 16 - August 6

\$3500

DAILY SCHEDULE

History, Methods and Theory will be taught in the mornings from 9 to 11 for each session, and *Studio/LAB* sessions will occur from 1 to 5. Courses are Monday through Friday.

COMPONENTS OF STUDY

There are four areas of study as noted above. In the history and theory components, we will use Las Vegas to talk about issues of urbanism and light. Attendees will have an increased understanding of contextual urbanism and improved communication skills in writing and speaking. In the methods component, attendees will learn methods in analyzing light through digital tools like photography and computing programs. In NIGHTLAB, attendees will work with LED lighting; in LIGHTLAB attendees will work with digital fabrication techniques. In the studio, students will build projects to fit into the local context and apply theories and methods learned in the morning sessions.

SPONSORS AND INSTRUCTORS

This program is a collaboration between the American Institute of Architects Las Vegas Chapter, and the University of Nevada, Las Vegas Downtown Design Center. Instructors are listed on the information pages for each three-week session.

LOCATION

The home of the program and studios will be the Historic 5th Street School in Downtown Las Vegas.

HOUSING

Housing costs are not in the program fees, but there may be complimentary housing available. However, as a city of hospitality, several options exist within walking and transit distance of the studio location. Please find a map of some housing options at: <http://www.unlvddc.org/lodging>

Budget between \$500 and \$1200 for 3 weeks of housing at single occupancy.

INQUIRIES

Please direct all inquiries to ddc@unlv.edu

APPLICATION AND REGISTRATION

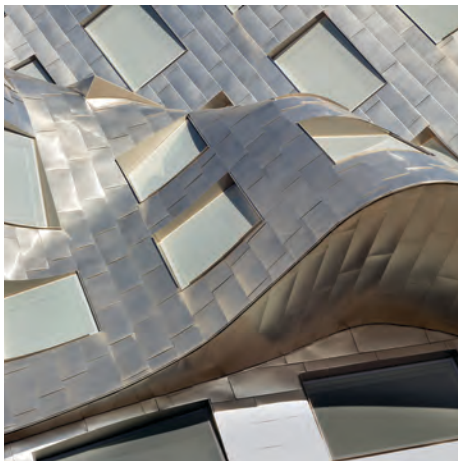
Apply at <http://www.unlvddc.org/#/lightlab-nightlab/>

Attendees may register after acceptance into the program, registration payment will not be taken until May 31st, 2013.



LIGHTLAB

an ecological urbanism experience



LIGHTLAB is a three-week session to explore issues of ecology and urbanism from the perspective of light and the experience of it. This lab is open to those eager to collectively speculate upon the relationship of ecology and urbanism with the design of light.

PROGRAM SCHEDULE & COST
 June 24 - July 16 - \$3000
 (participants may take travel break for July 4 holiday)

LOCATION
 The home of the program and studios will be the Historic 5th Street School in Downtown Las Vegas.

HOUSING
 Housing costs are not in the program fees, but complimentary housing may be available. However, as a city of hospitality, several options exist within walking and transit distance of the studio location. Please find a map of some housing options at:
<http://www.unlvddc.org/lodging>

Budget between \$500 and \$1200 for 3 weeks of housing at single occupancy.

DAILY SCHEDULE
History, Methods and Theory will be taught in the mornings from 9 to 11 for each session, and *Studio/LAB* sessions will occur from 1 to 5. Courses are Monday through Thursday for studio lab and Tuesday through Friday for the morning courses.

COMPONENTS OF STUDY
 In the history and theory components, we will use Las Vegas to talk about issues of urbanism and how daylight and climate affect design. Attendees will have an increased understanding of contextual urbanism and improved communication skills in writing and speaking from written and oral presentations required for the history and theory courses. In the methods component, attendees will learn methods in analyzing light through digital tools like photography and computing programs. LIGHTLAB attendees will work with digital fabrication techniques to design and build a shade structure for installation in Downtown Las Vegas. The studio will connect to the support courses, attendees will apply theories and methods learned in the morning sessions.

SPONSORS AND INSTRUCTORS
 This program is a collaboration between the American Institute of Architects Las Vegas Chapter, and the University of Nevada, Las Vegas Downtown Design Center. Ken McCown will teach the history, theory and design sections of the course, and Phil Zawarus will teach the methods section of the course in addition to jointly teaching the studio course. Ken is Director of the UNLV Downtown Design Center and Phil Zawarus is the UNLV Downtown Design Center Fellow for 2013. Ken has a background in architecture and landscape architecture and is an internationally awarded educator of studio teaching.

INQUIRIES
 Please direct all inquiries to ddc@unlv.edu

APPLICATION AND REGISTRATION
 Apply at: <http://www.unlvddc.org/#/lightlab-nightlab/>

Attendees may register after acceptance into the program, registration payment will not be taken until May 31st, 2013.



NIGHTLAB

an ecological urbanism experience



LIGHTLAB is a three-week session to explore issues of ecology and urbanism from the perspective of light and the experience of it. This lab is open to those eager to collectively speculate upon the relationship of ecology and urbanism with the design of light.

PROGRAM SCHEDULE & COST
July 16 - August 6 - \$3500

LOCATION
The home of the program and studios will be the Historic 5th Street School in Downtown Las Vegas.

HOUSING
Housing costs are not in the program fees. However, as a city of hospitality, several options exist within walking and transit distance of the studio location. Please find a map of some housing options at:

<http://www.unlvddc.org/lodging>

Budget between \$500 and \$1200 for 3 weeks of housing at single occupancy. Complimentary housing may be available.

DAILY SCHEDULE
History, Methods and Theory will be in the mornings from 9 to 11, and *Studio/LAB* sessions will be from 1 to 5. *Studio/LAB* is Monday through Thursday and morning courses are Tuesday through Friday.

COMPONENTS OF STUDY
In the history and theory components, Las Vegas is a lab to talk about issues of urbanism and night. Attendees will increase their understanding of contextual urbanism and improved communication skills in writing and speaking from written and oral presentations required for the history and theory courses. In the methods component, attendees will learn methods in lighting design, using LED lights to explore ideas. Attendees will work with light to design the experiences of spaces and objects at night. The studio will connect to the support courses; attendees will apply theories and methods learned in the morning sessions.

SPONSORS AND INSTRUCTORS
This program is a collaboration between the American

Institute of Architects Las Vegas Chapter, and the University of Nevada, Las Vegas Downtown Design Center. Ken McCown will teach the history and design sections of the course, and Julie Oksanen will teach the methods section of the course in addition to jointly teaching the studio course. Ken has a background in architecture and landscape architecture and is an internationally awarded educator of studio teaching. Julie is an internationally-renowned lighting and luminaire designer and Professor of Lighting Design. Julie's academic background lies within landscape architecture and architectural engineering. His work can be seen at: www.kolumbus.fi/jold

INQUIRIES
Please direct all inquiries to ddc@unlv.edu

APPLICATION AND REGISTRATION
Apply at <http://www.unlvddc.org/#/lightlab-nightlab/>

Attendees may register after acceptance into the program, registration payment will not be taken until May 31st, 2013.