

Impact of the Built and Natural Environment on American Indian Health

AIA AAH/ACHA Summer Leadership Summit
Chicago, IL
July 23, 2016

Donald Warne, MD, MPH

Oglala Lakota

Chair, Department of Public Health

Mary J. Berg Distinguished Professor of Women's Health

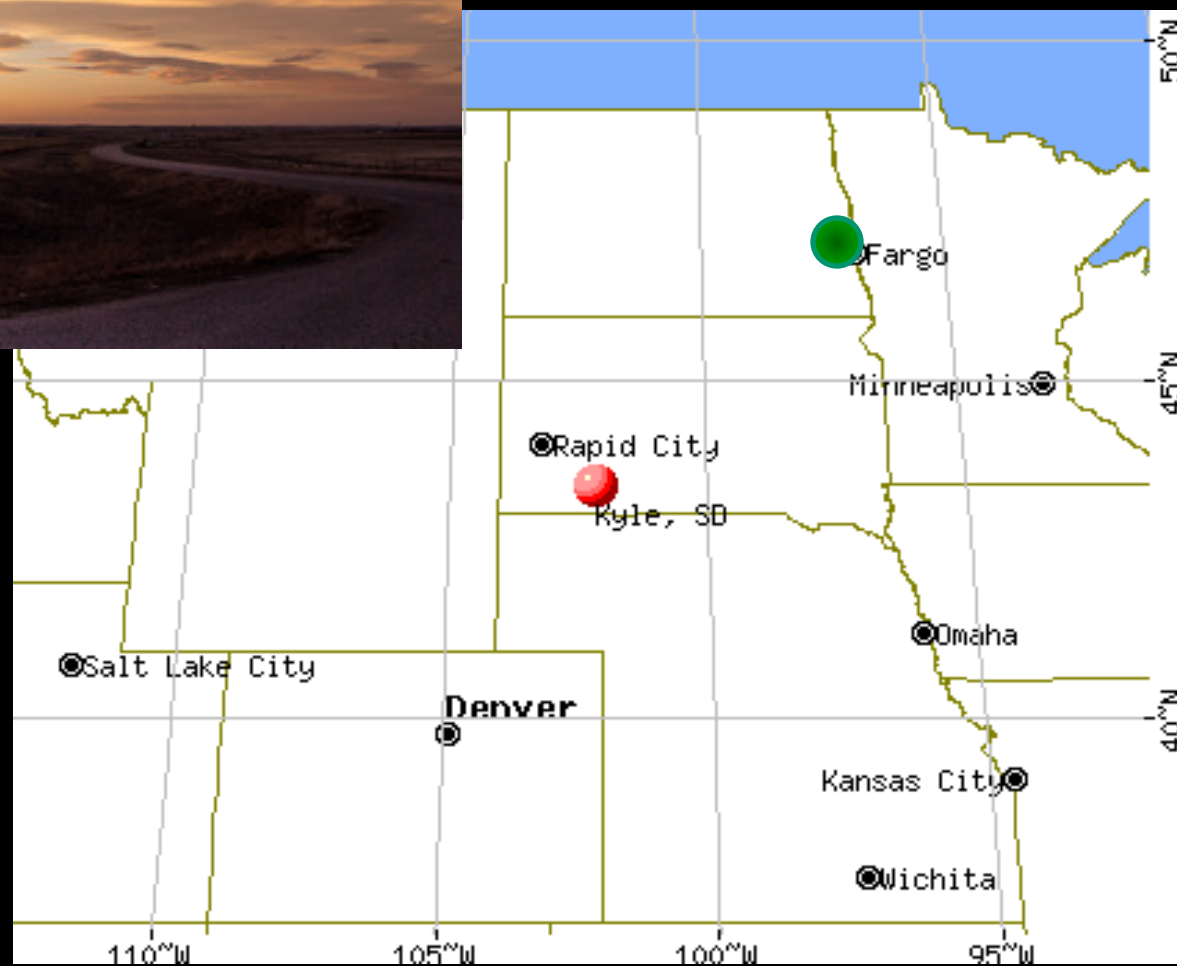
STUDENT FOCUSED • LAND GRANT • RESEARCH UNIVERSITY **NDSU**

Traditional View of Public Health



STUDENT FOCUSED • LAND GRANT • RESEARCH UNIVERSITY **NDSU**

Pine Ridge Reservation Kyle, S.D.





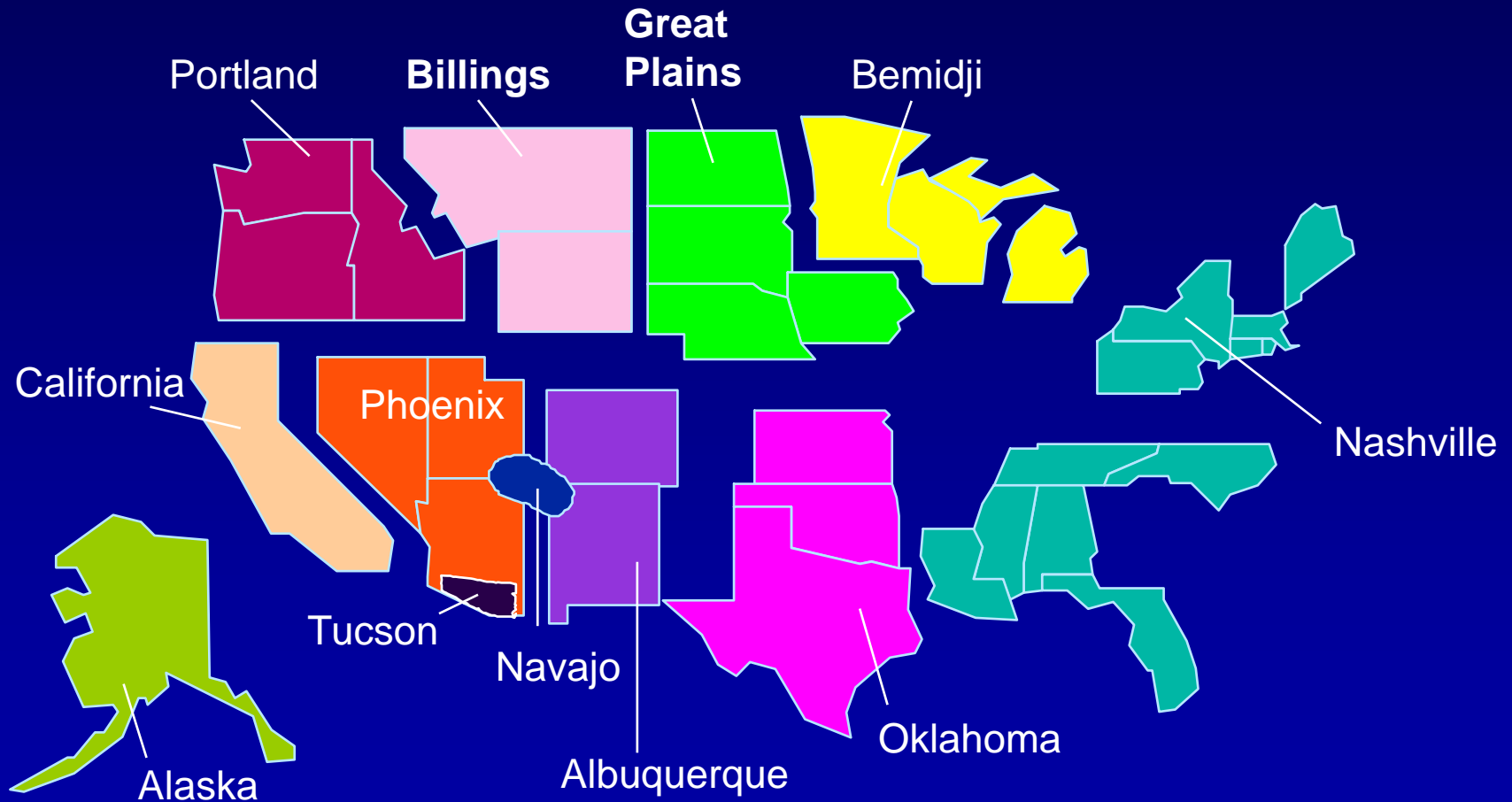




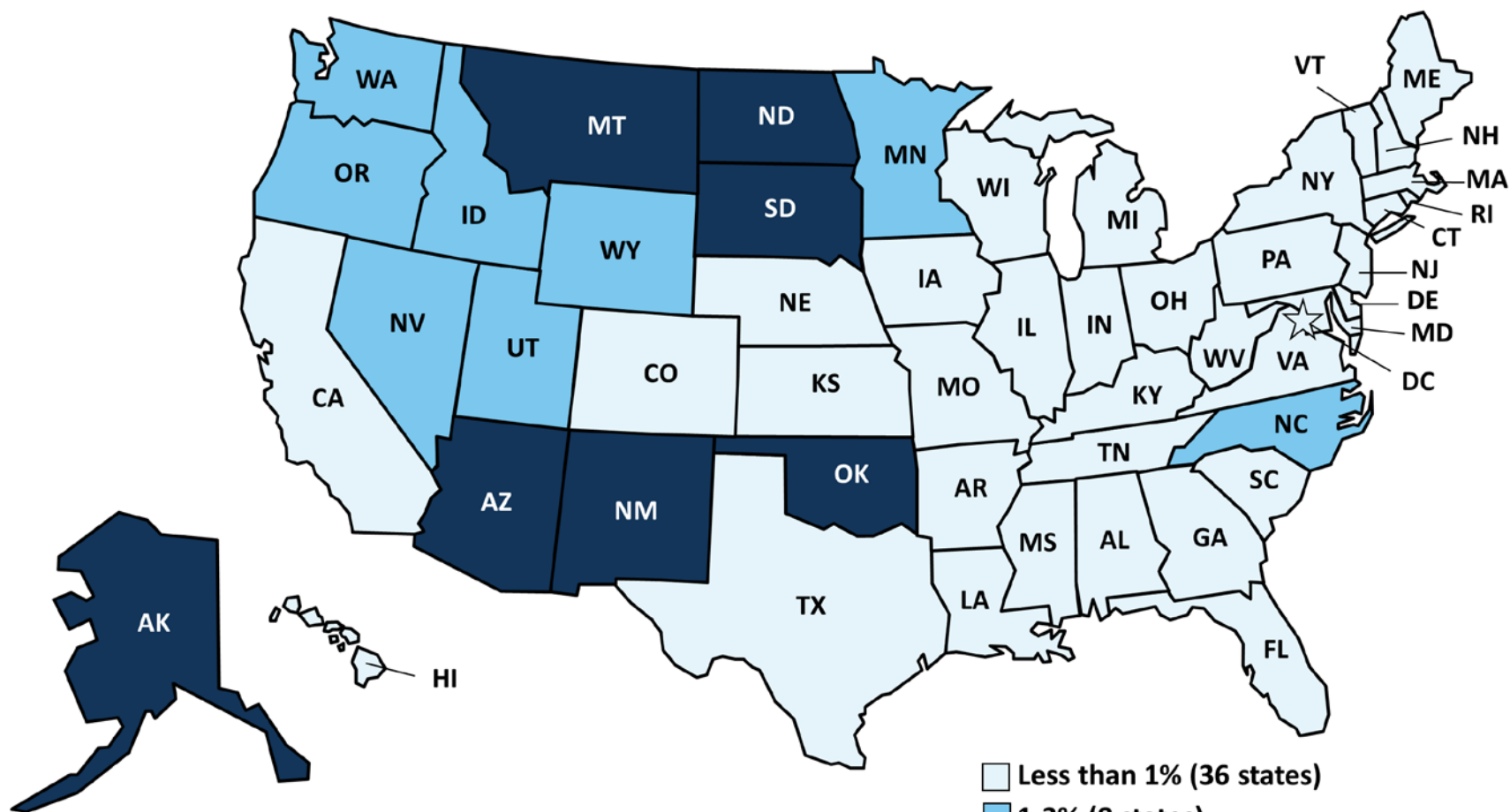




IHS Areas



American Indians and Alaska Natives as a Share of the Total Population, by State, 2009-2011



Total: 2.5 million = 1% of U.S. Population

American Indian and Alaska Native includes people of Hispanic origin.
SOURCE: KCMU analysis of 2009 - 2011 ACS.

AI Health Disparities

Death rates from preventable diseases among AIs are significantly higher than among non-Indians:

- Diabetes 208% greater
- Alcoholism 526% greater
- Accidents 150% greater
- Suicide 60% greater

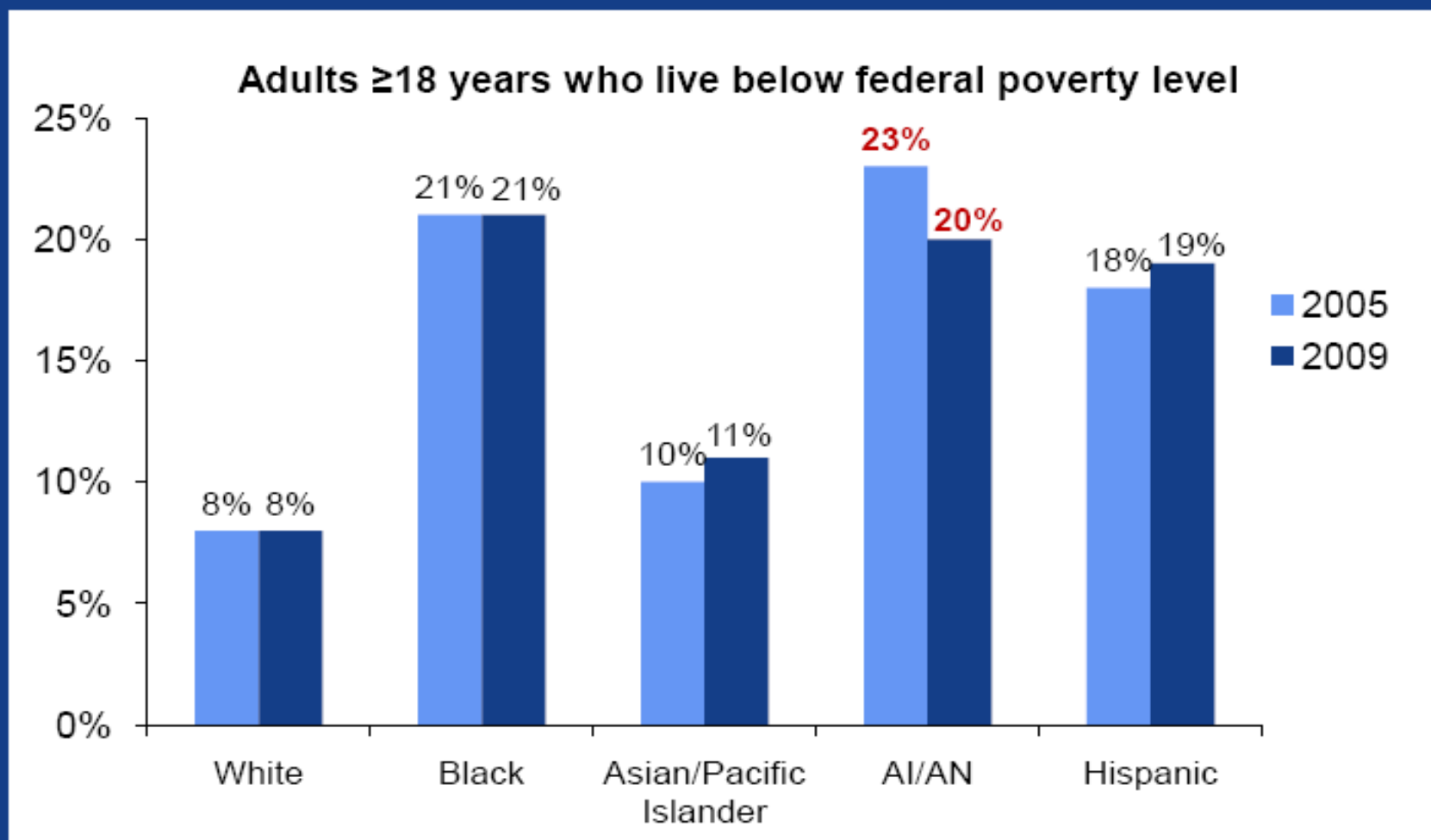
AI Health Disparities

Average age at death in ND (2010 – 2014):

77.4 Years in the White Population

56.6 Years in the AI Population

2.5 times as many AI/ANs as whites live below poverty level

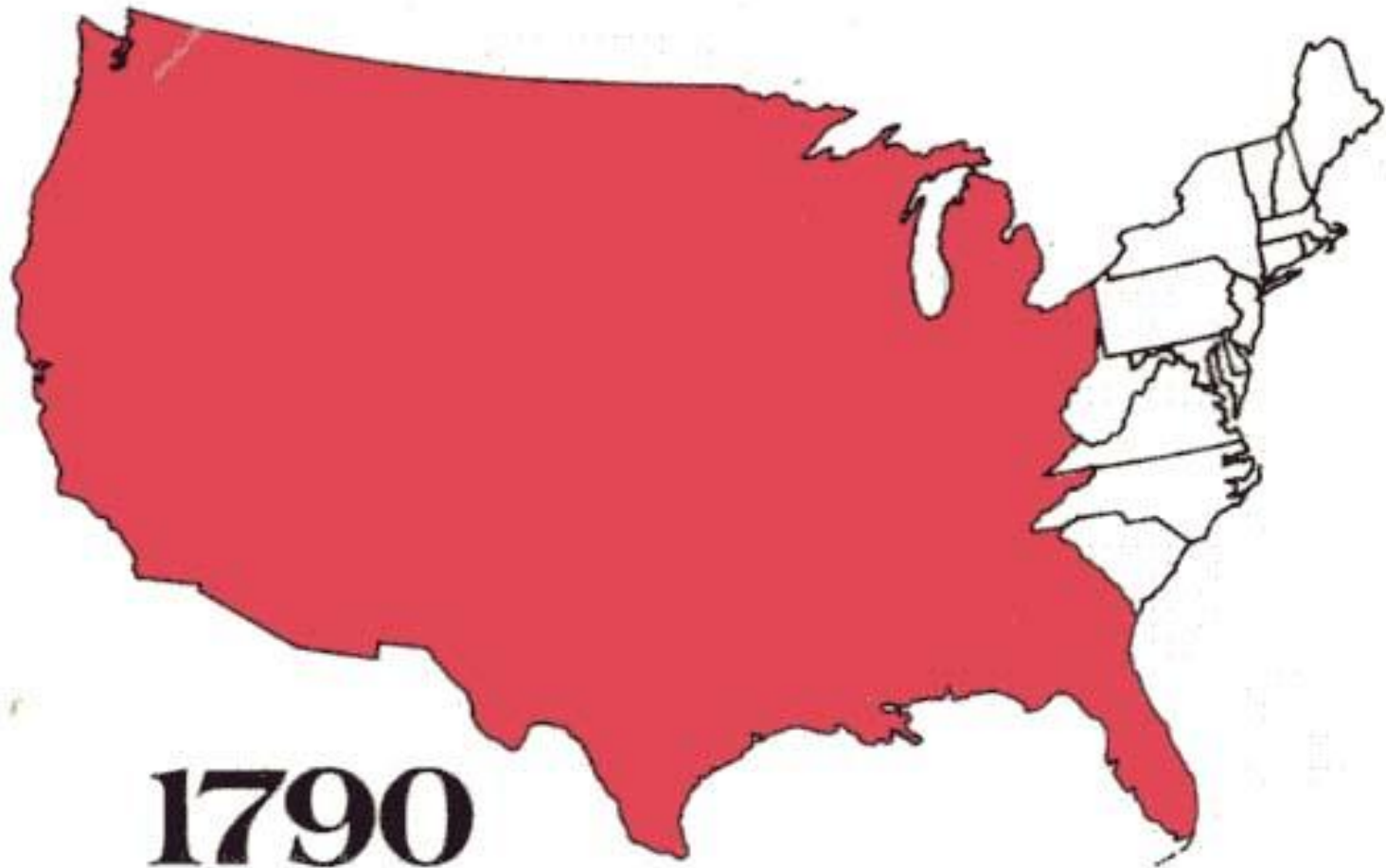


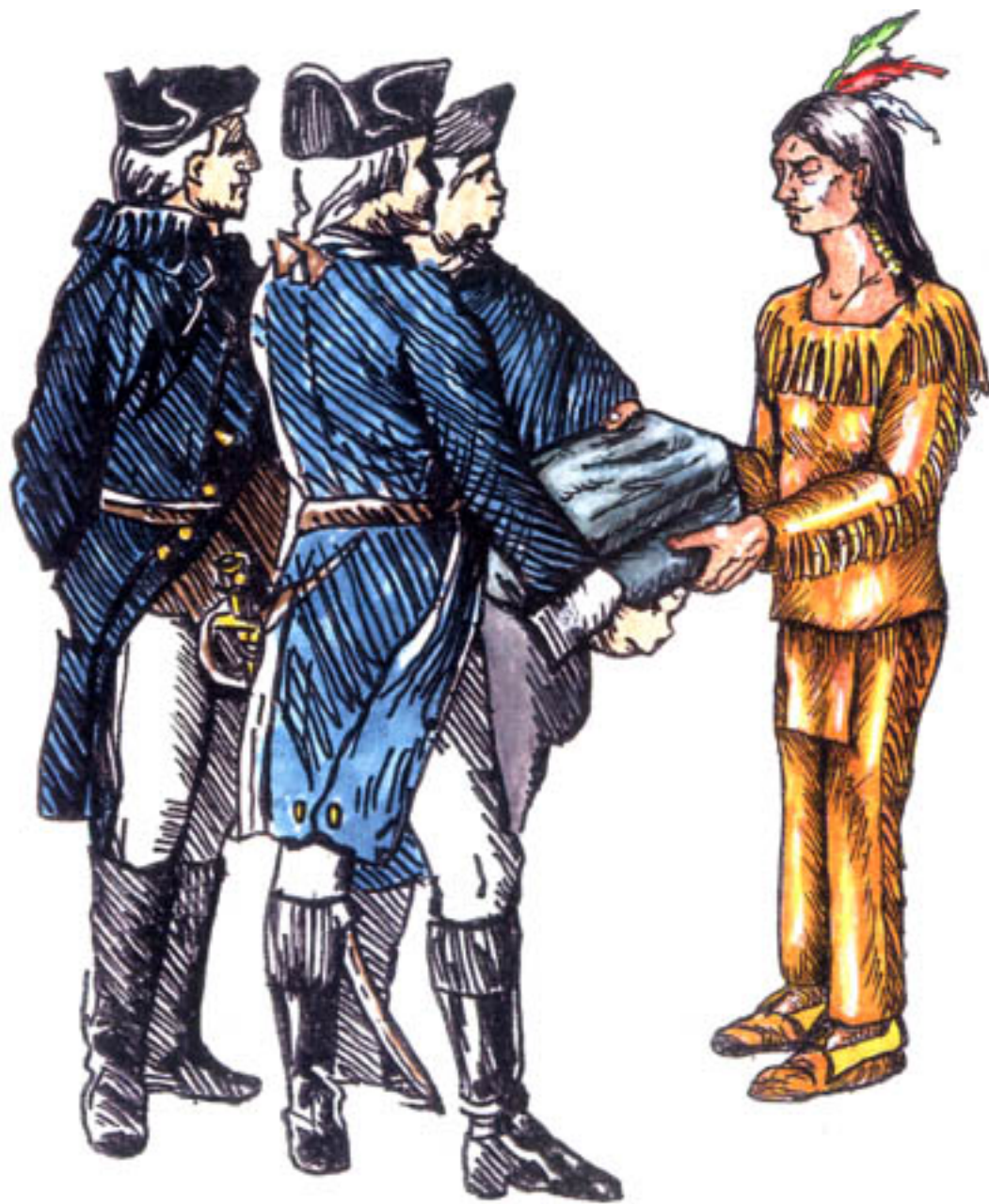
Source: CDC Health Disparities and Inequalities Report 2011, MMWR, Vo. 60

Historical Context



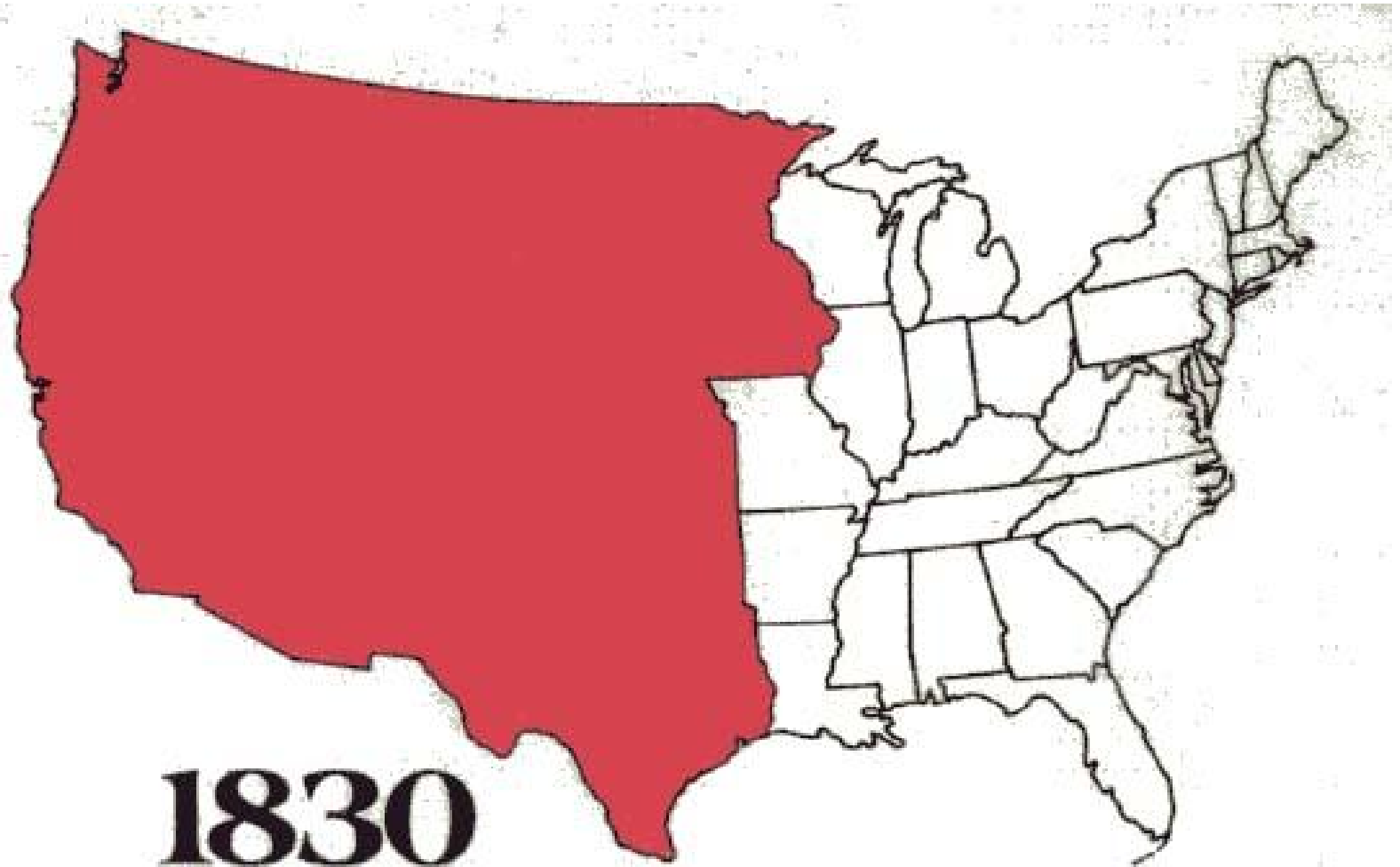
Historical Context





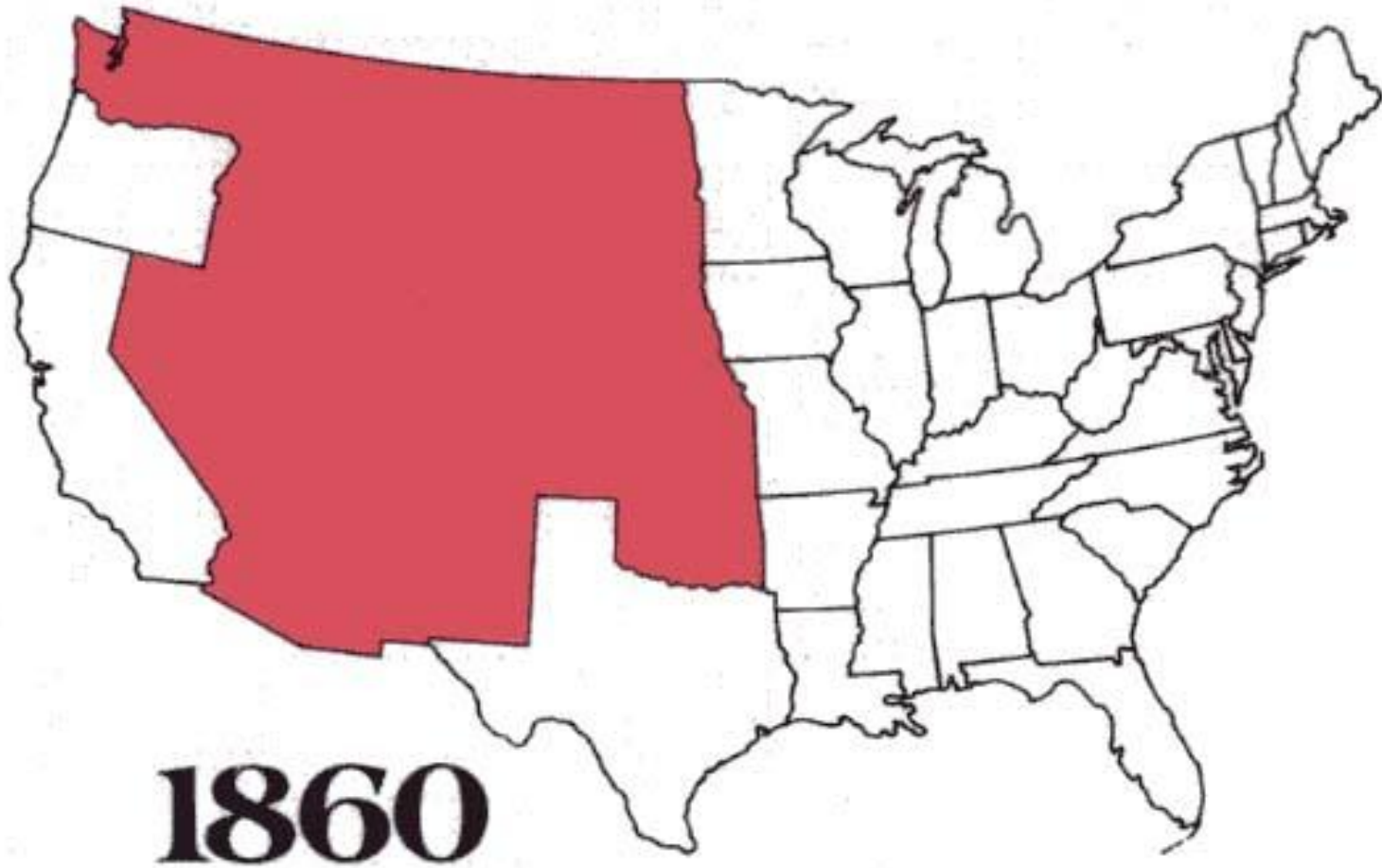
T. PETERS '01

Historical Context

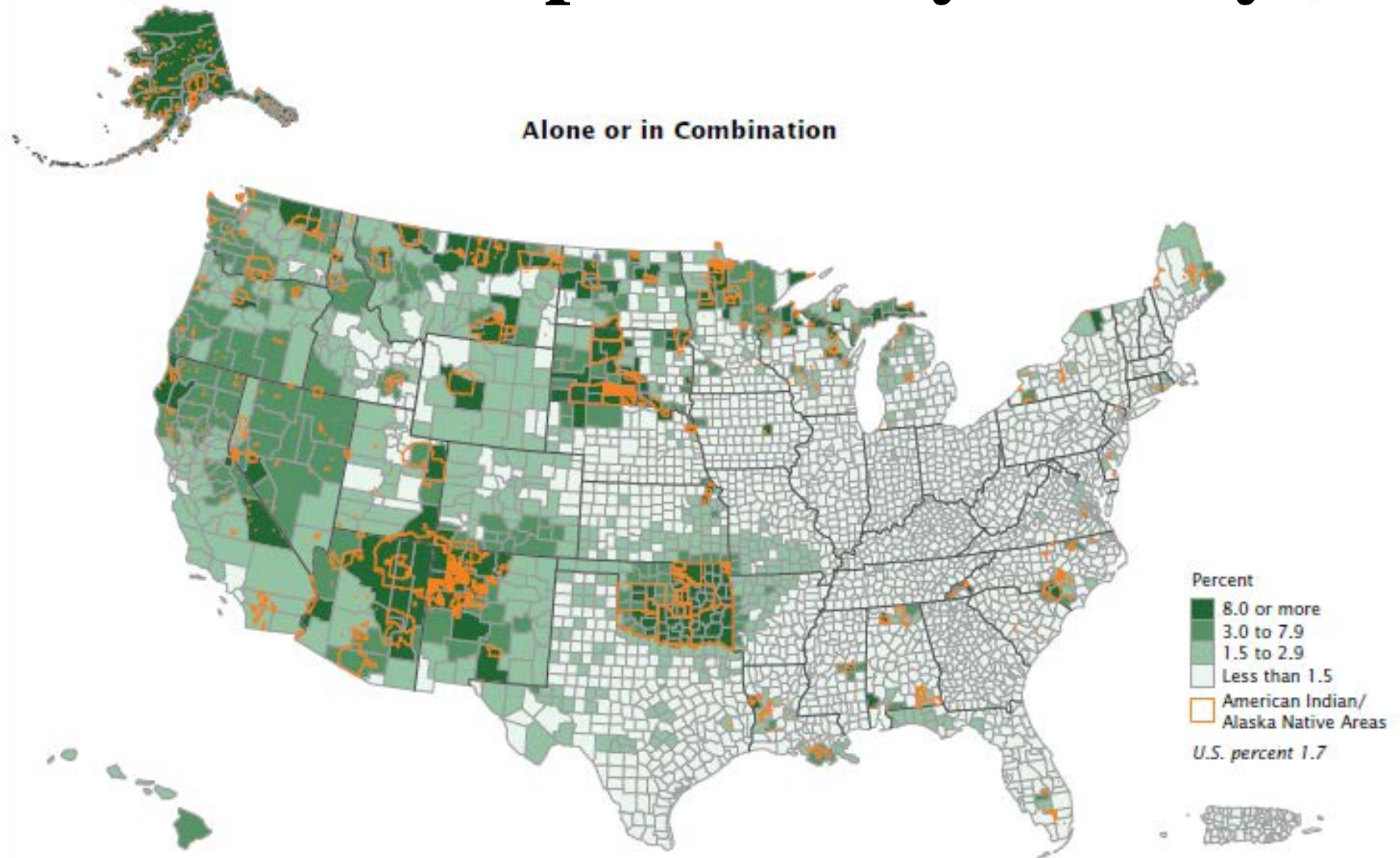




Historical Context

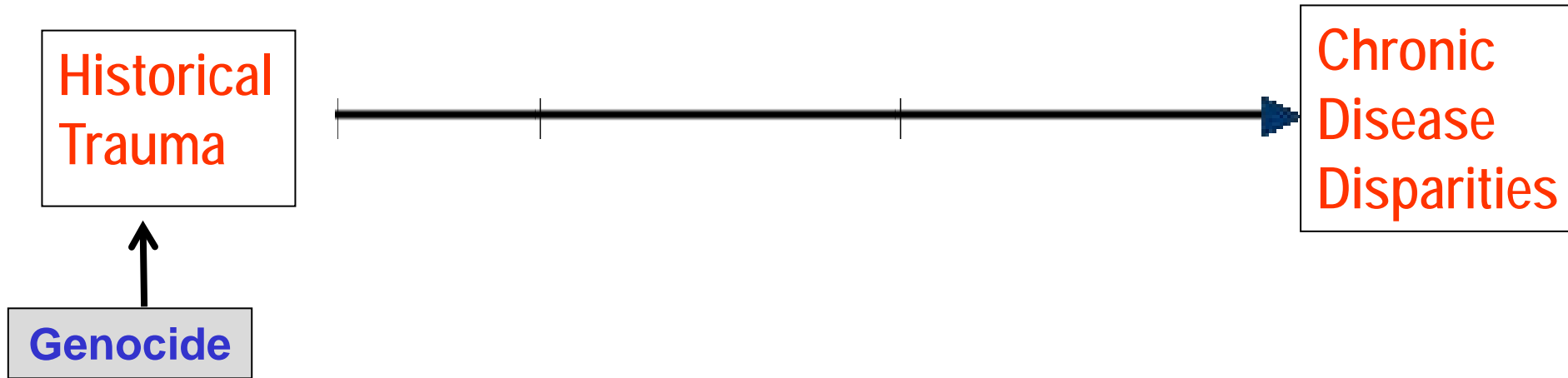


AI/AN Population by County

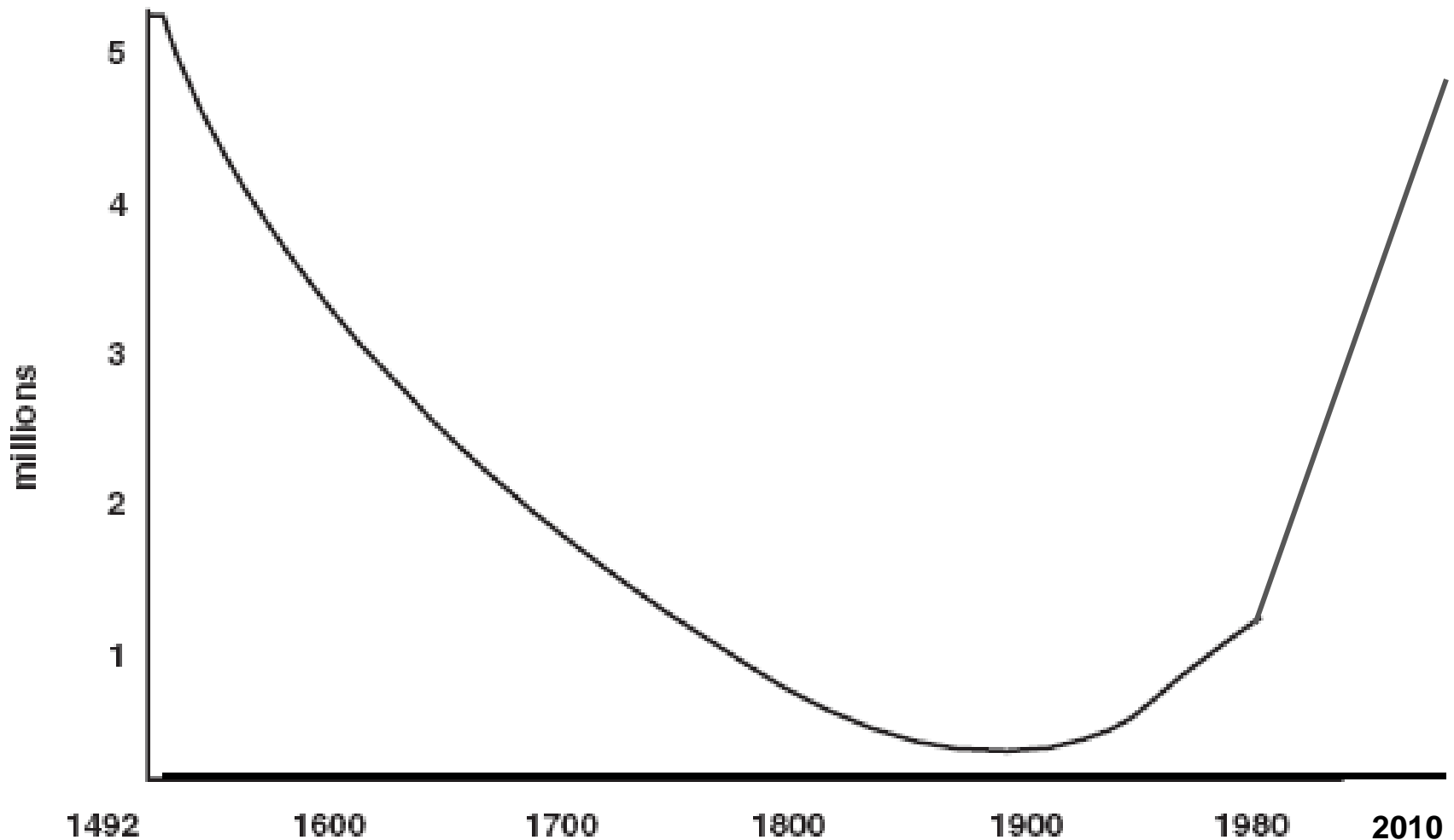


Source: U.S. Census Bureau, 2010 Census Redistricting Data (Public Law 94-171) Summary File, Table P1.

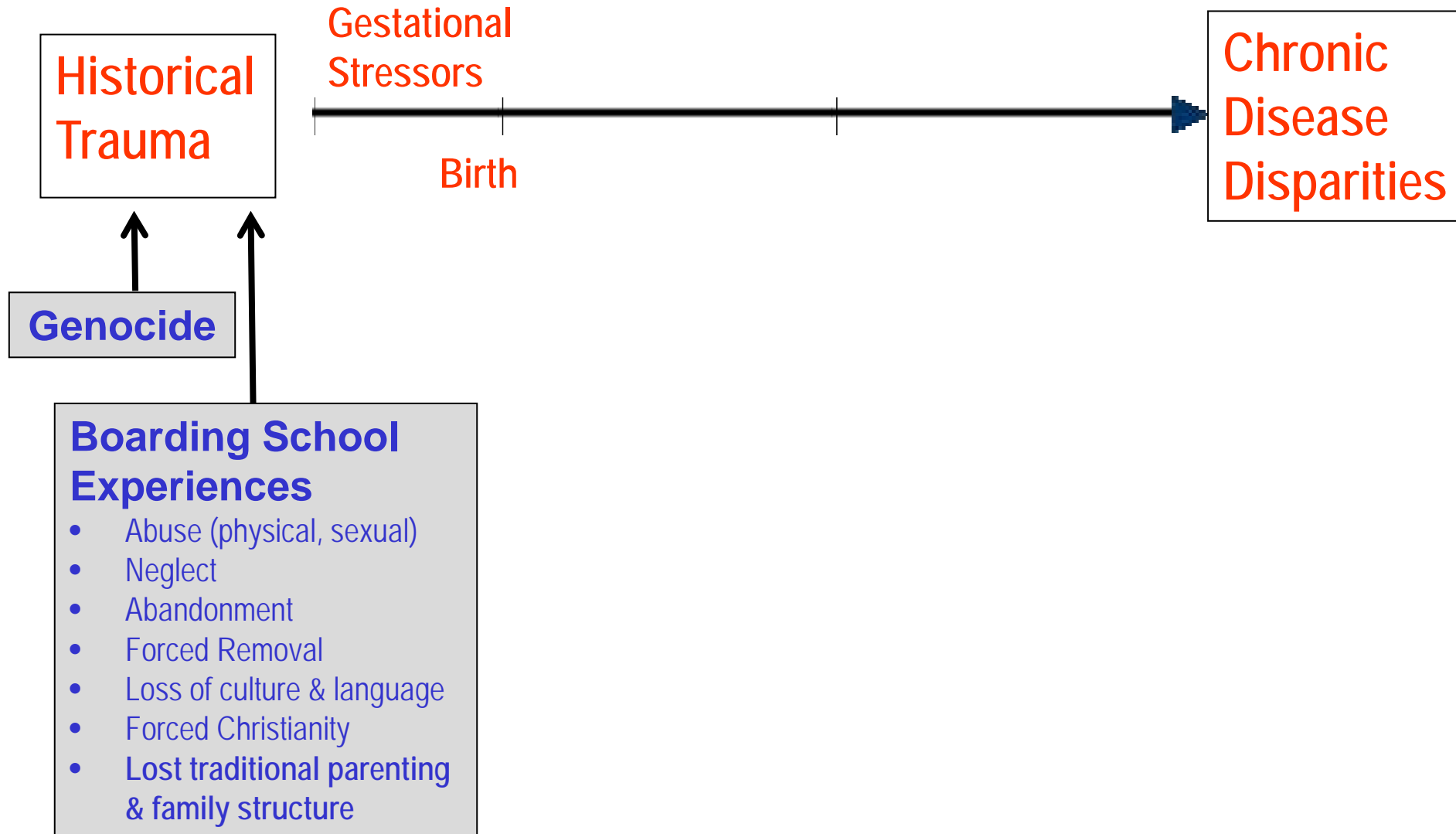
Inter-Generational Basis for Chronic Disease Disparities Among American Indians and Alaska Natives



American Indian Population Decline and Recovery, 1492 – 2010



Inter-Generational Basis for Chronic Disease Disparities Among American Indians and Alaska Natives

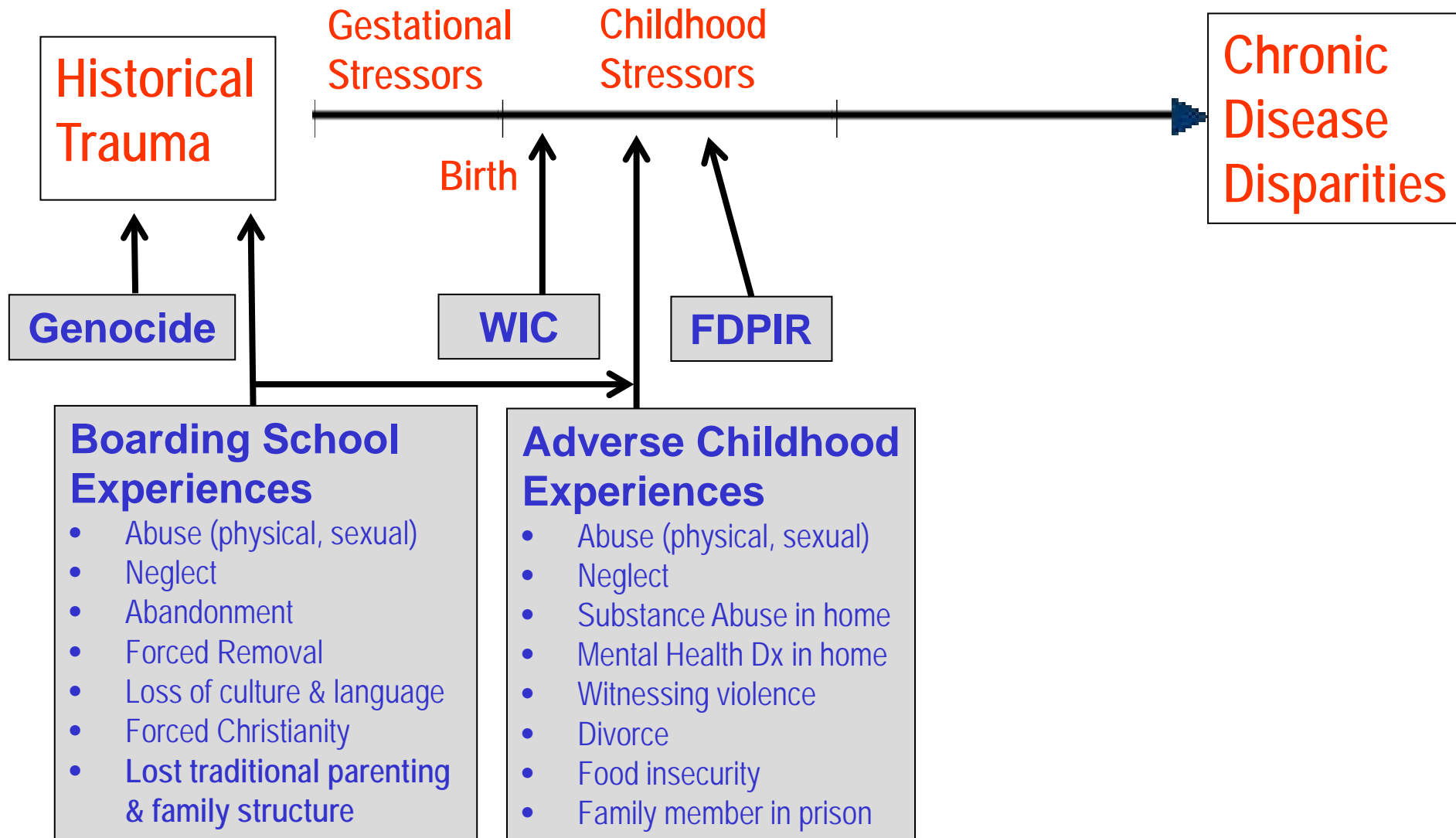


Historical trauma is the collective emotional wounding across generations that results from massive cataclysmic events – Historically Traumatic Events (HTE)*

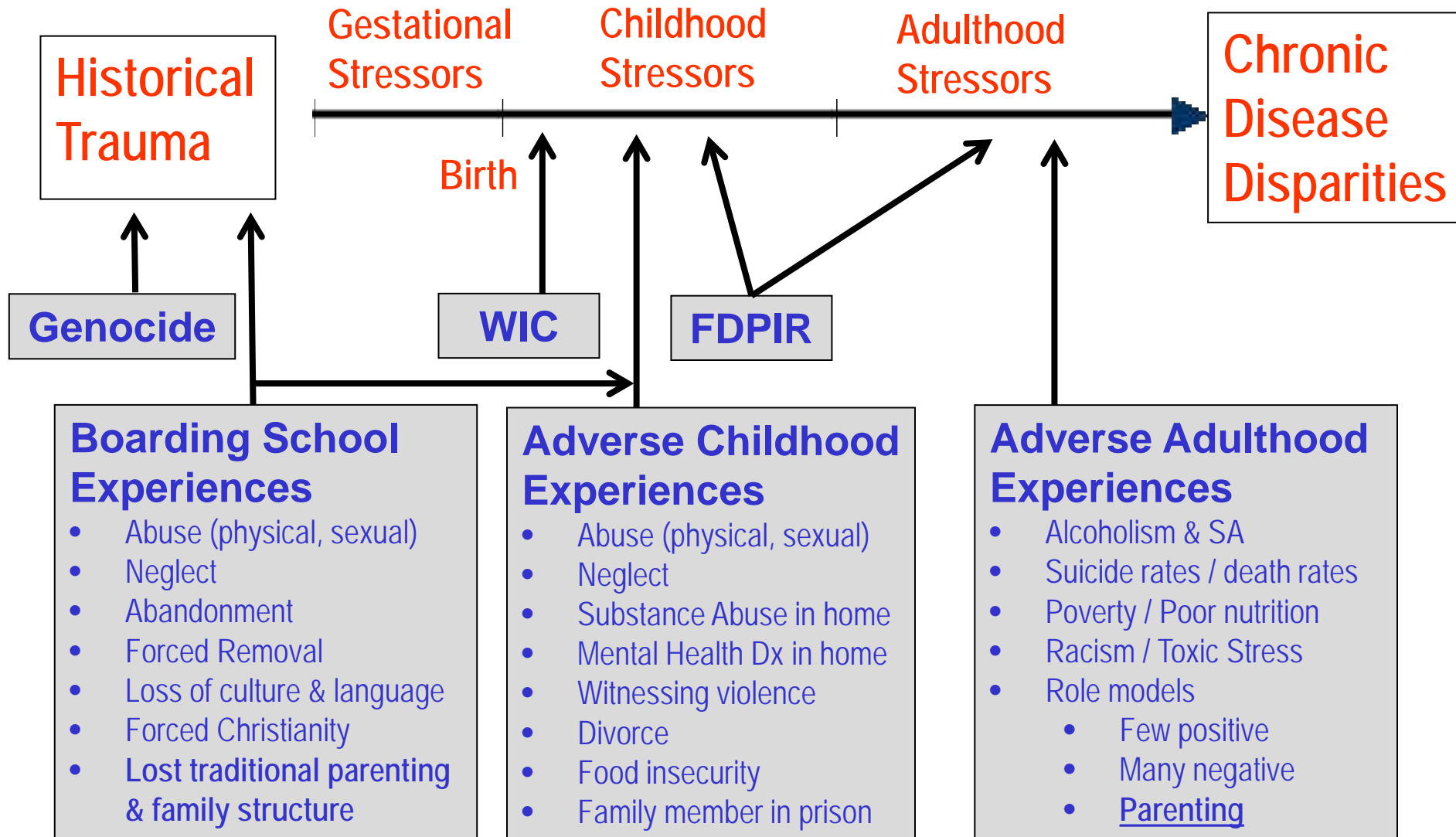


- The trauma is held personally and transmitted over generations. Thus, even family members who have not directly experienced the trauma can feel the effects of the event generations later

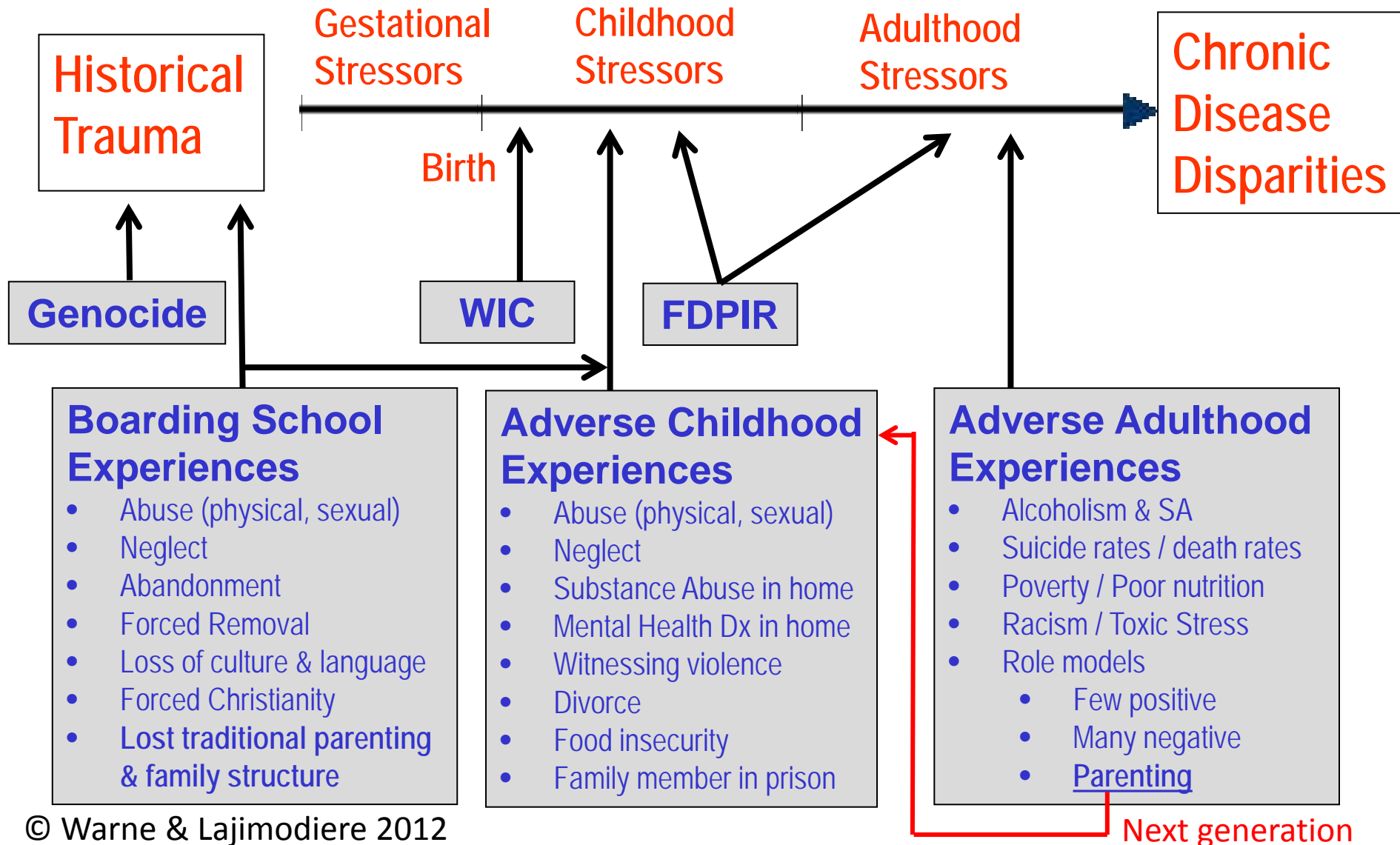
Inter-Generational Basis for Chronic Disease Disparities Among American Indians and Alaska Natives



Inter-Generational Basis for Chronic Disease Disparities Among American Indians and Alaska Natives



Inter-Generational Basis for Chronic Disease Disparities Among American Indians and Alaska Natives



Significant Challenges

Social Determinants

- Poverty
- Trauma
- Politics
- Inattention/Neglect
- Racism
- Inequity

Outcomes

- Health Disparities
- Education Inequality
- Generational Poverty
- Ongoing Racism
- Worsening Inequity
- Suffering and Death

A sepia-toned portrait of Sitting Bull, a prominent leader of the Lakota people. He is shown from the chest up, wearing a traditional fringed garment. He has a serious expression and is looking directly at the camera. The background is a plain, light-colored wall.

Let Us Put Our Minds
Together
And See
What Life
We Can
Make For
Our
Children.

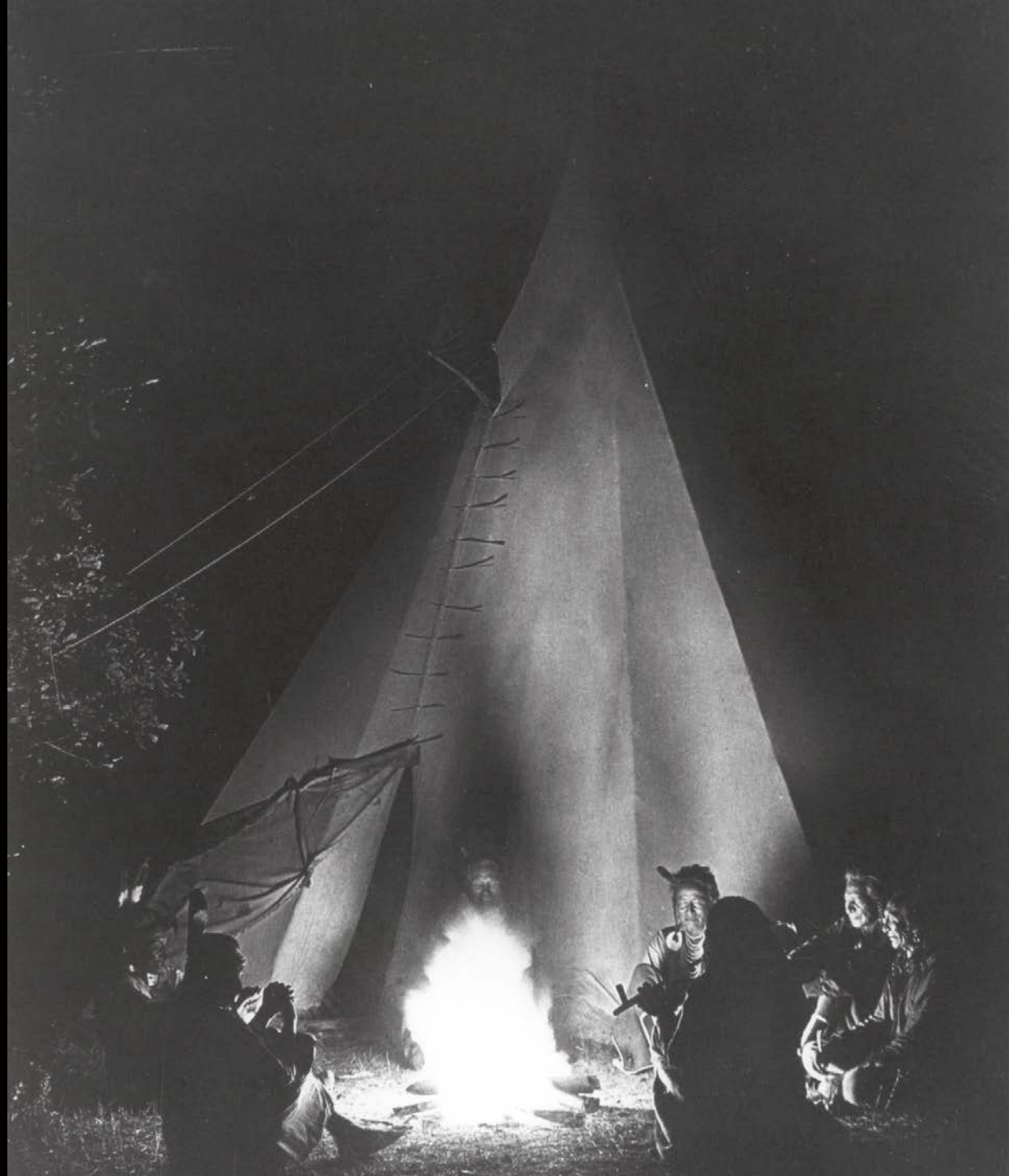
~ Sitting Bull

MODERN TRADITIONAL

- Model

Allopathic

Holistic



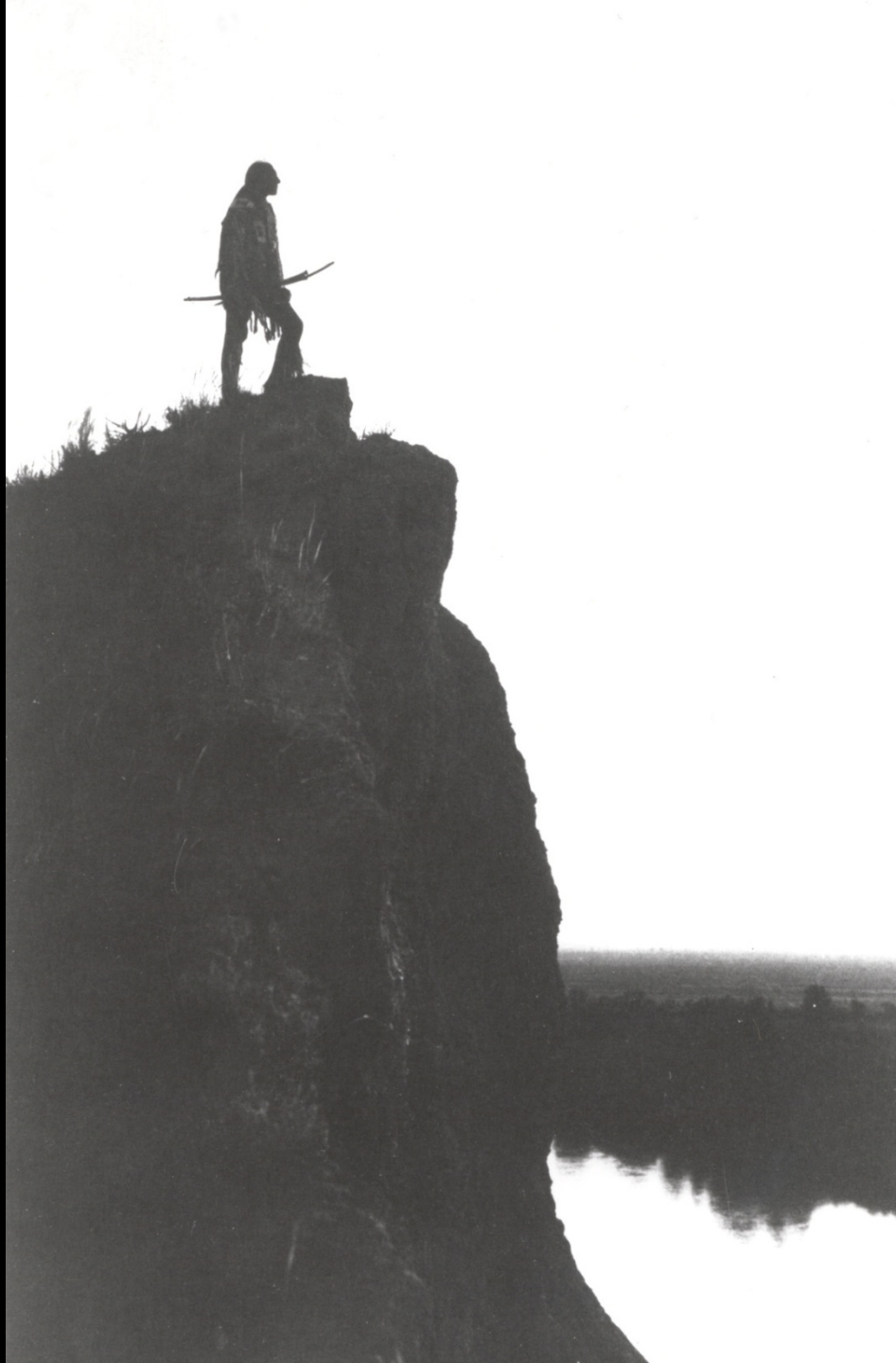
MODERN

TRADITIONAL

“Medicine”

Physical

Spiritual



MODERN TRADITIONAL

- Goal Cure/Control Community
Individual Disease Health



MODERN

TRADITIONAL

• **Communication**

Linear

Circular



MODERN

TRADITIONAL

- Provider

Physician

Healer



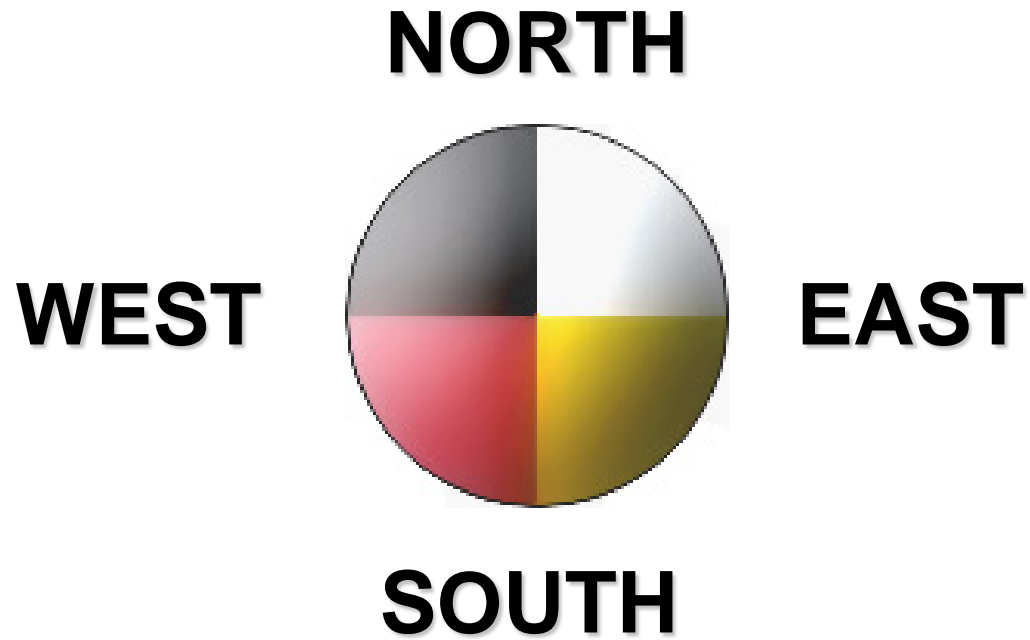
MODERN TRADITIONAL

•Symbol Serpent & Staff Medicine Wheel





MEDICINE WHEEL



MEDICINE WHEEL



MEDICINE WHEEL

EDUCATIONAL

ENVIRONMENTAL



CULTURAL

SOCIAL

Ed McGaa, Eagle Man

Native American Indians learned how to live with the earth on a deeply spiritual plane. The plight of the non-Indian world is that it has lost respect for Mother Earth, from whom and where we all come.

Ed McGaa, Eagle Man

We all start out in this world as tiny seeds—no different from our animal brothers and sisters, the deer, the bear, the buffalo, or the trees, the flowers, the winged people.

Mother Earth is our real mother, because every bit of us truly comes from her, and daily she takes care of us.



NDSU MPH Program Mission

The program's mission is to promote health and well-being in diverse populations with an emphasis on American Indian and other underserved populations by providing educational, practical, and research opportunities for public health professionals.

Specializations/Tracks

NDSU MPH Program

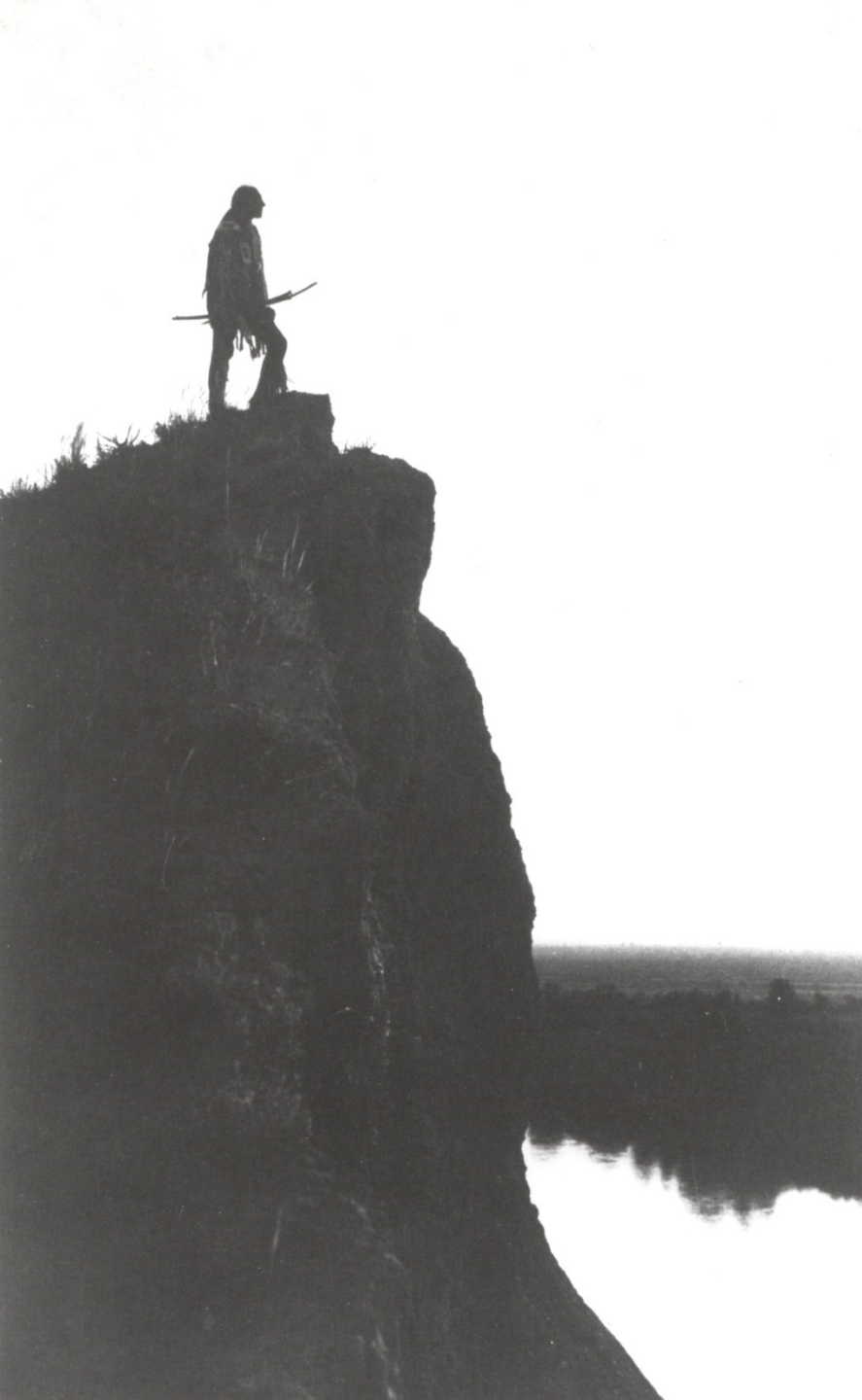
- Health Promotion (CHES)
- Management of Infectious Diseases
- Public Health in Clinical Systems
- American Indian Public Health**

Specializations/Tracks

American Indian Public Health

- **Required Courses**

- American Indian Health Policy
- American Indian Health Disparities
- Cultural Competence in Indian Health
- Research Issues in Tribal Communities
- Case Studies in Indian Health



Donald Warne

donald.warne@ndsu.edu