

A decorative border at the top of the slide featuring a dark green background with various tropical plants. On the left, there are long, thin, light green leaves. In the center and right, there are several hibiscus flowers in shades of light pink, orange, and red. The border is separated from the white text area by a diagonal line.

Uniquely Hawai'i: Best Practices in Five Recent Courthouses

A decorative border at the top of the page featuring a dark green background with various tropical plants. On the left, there are long, thin, light green leaves. In the center and right, there are several hibiscus flowers in shades of light pink, orange, and red.

E KOMO MAI

A decorative border at the bottom of the page, similar to the top one, featuring a dark green background with tropical plants and hibiscus flowers in shades of pink, orange, and red.

Copyright Notice

This presentation is protected by US and International Copyright laws. Reproduction, distribution, display and use of the presentation without written permission of the speaker is prohibited.

© The American Institute of Architects 2016

AIA/CES Compliance Statement

“AIA Knowledge” is a Registered Provider with The American Institute of Architects Continuing Education Systems (AIA/CES). Credit(s) earned on completion of this program will be reported to AIA/CES for AIA members. Certificates of Completion for both AIA members and non-AIA members are available upon request.

This program is registered with AIA/CES for continuing professional education. As such, it does not include content that may be deemed or construed to be an approval or endorsement by the AIA of any material of construction or any method or manner of handling, using, distributing, or dealing in any material or product.

Questions related to specific materials, methods, and services will be addressed at the conclusion of this presentation.

AIA/CES Reporting Details

All attendees will be eligible to receive AIA continuing education for attending this course by completing the electronic form sent via email after the conference.

Continuing education questions can be directed to aaaj@aia.org.

Course Description

With five new major courthouses in the last 15 years, the State of Hawaii Judiciary is addressing many unique and emerging needs in Hawaii, as well as leading the country in a number of best practices.

The mission of the Judiciary extends to helping individuals, families and communities impacted by the procedures in the courts. From this mission come specialized Drug, Girls, Veterans, Mental Health and DWI courts; the Hawaii Opportunity Probation with Enforcement program preferring probation over jail time; Access to Justice Program; and eCourt Kokua for judicial accessibility.

Hawaii's history (from monarchy to modern multi-ethnic society), distinct island communities, tradition of openness, high proportion of extended families, and very high construction and operational costs lead to unique judicial operations and facilities.

This interactive panel of Judiciary leaders and Hawaii courthouse architect will illustrate Hawaii-specific best practices with case studies of historical and recent courthouses.

Learning Objectives

1. Participants will gain detailed knowledge of the programs and client needs for specialty courts, such as Family, Drug, Girls, Veterans, and Mental Health, to inform the design of courtrooms with flexibility for specialty uses, based on examples in State of Hawaii courthouses.
2. Participants will be able to analyze the operational and facility trade-offs between community goals of an Open and Caring Society and increasingly complex security requirements, based on State of Hawaii courthouses, for application elsewhere given each community's balance of values and requirements.
3. Participants will be able to identify the impact of Hawaii's history from monarchy to contemporary multi-ethnic society and the impact of the geography of distinct island communities on the evolution of the unified State Judiciary and its courthouses, through historical and contemporary courthouse examples.
4. Participants will be able to deconstruct and analyze the conventional courthouse through the "mobile court" concept, which aims to provide judicial services in needy communities, such as homeless communities, to break the vicious cycle of citation, inability to attend court hearings, and bench warrant issuance. Understanding the court without walls reveals the essence of the courthouse functions and purposes.



KO'OLAUPOKO



KAUAI

Uniquely Hawai'i: Best Practices in Five Recent Courthouses



KO'OLAUPOKO



HILO



KONA

Judge Ronald Ibarra

Chief Judge

Third Circuit Court (Hawai'i Island)

The Judiciary - State of Hawai'i

David Lam

Chief Court Administrator

Fifth Circuit Court (Kaua'i)

The Judiciary - State of Hawai'i

Joanne Krippaehne

Architect

Capital Improvements Program Branch

The Judiciary - State of Hawai'i

Keahe Davis

Education Specialist

Kamehameha V Judiciary History Center

David Bylund, AIA

Principal

AHL

Uniquely Hawai'i:
Best Practices in Five
Recent Courthouses





1778 - 1848

Contact to Mahele

1848 - 1893

Mahele to Overthrow

1893 - 1941

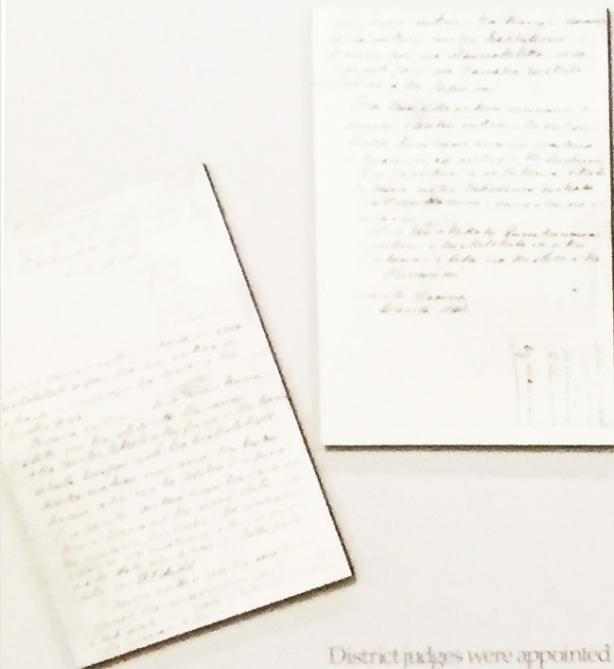
Annexation to WWII

1941 - 1959

WWII to Statehood

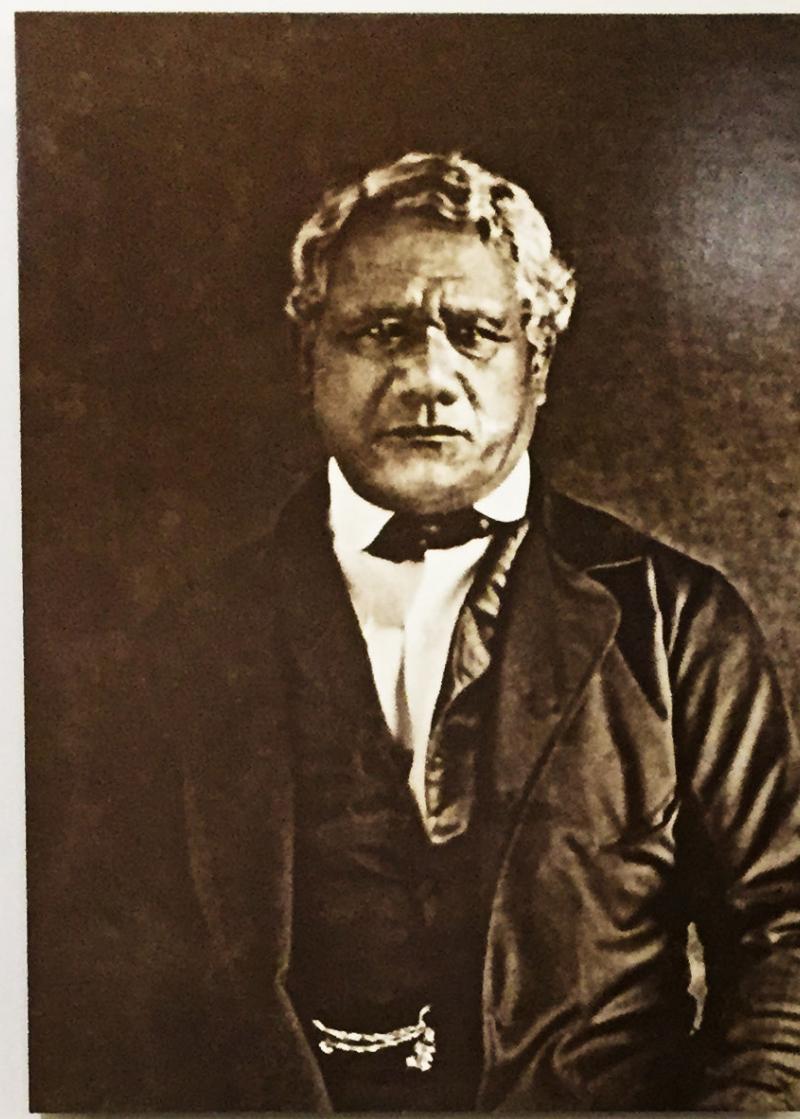
1959 - Present

Statehood to Today



District judges were appointed by island governors. Kekuanaoa wrote instructions to Oahu judges about how to behave.

"You must do these things correctly according to the words of the law; that is, the trial to right the wrong, then the punishment. The trial must not be done in a loud voice or in great anger but with proper compassion."
Memorandum, 1840, 1841, 1842, 1843, 1844, 1845, 1846, 1847, 1848, 1849, 1850, 1851, 1852, 1853, 1854, 1855, 1856, 1857, 1858, 1859, 1860, 1861, 1862, 1863, 1864, 1865, 1866, 1867, 1868, 1869, 1870, 1871, 1872, 1873, 1874, 1875, 1876, 1877, 1878, 1879, 1880, 1881, 1882, 1883, 1884, 1885, 1886, 1887, 1888, 1889, 1890, 1891, 1892, 1893, 1894, 1895, 1896, 1897, 1898, 1899, 1900, 1901, 1902, 1903, 1904, 1905, 1906, 1907, 1908, 1909, 1910, 1911, 1912, 1913, 1914, 1915, 1916, 1917, 1918, 1919, 1920, 1921, 1922, 1923, 1924, 1925, 1926, 1927, 1928, 1929, 1930, 1931, 1932, 1933, 1934, 1935, 1936, 1937, 1938, 1939, 1940, 1941, 1942, 1943, 1944, 1945, 1946, 1947, 1948, 1949, 1950, 1951, 1952, 1953, 1954, 1955, 1956, 1957, 1958, 1959, 1960, 1961, 1962, 1963, 1964, 1965, 1966, 1967, 1968, 1969, 1970, 1971, 1972, 1973, 1974, 1975, 1976, 1977, 1978, 1979, 1980, 1981, 1982, 1983, 1984, 1985, 1986, 1987, 1988, 1989, 1990, 1991, 1992, 1993, 1994, 1995, 1996, 1997, 1998, 1999, 2000, 2001, 2002, 2003, 2004, 2005, 2006, 2007, 2008, 2009, 2010, 2011, 2012, 2013, 2014, 2015, 2016, 2017, 2018, 2019, 2020, 2021, 2022, 2023, 2024, 2025



Governor Matthew Kekuanaoa
Photo: John A. King

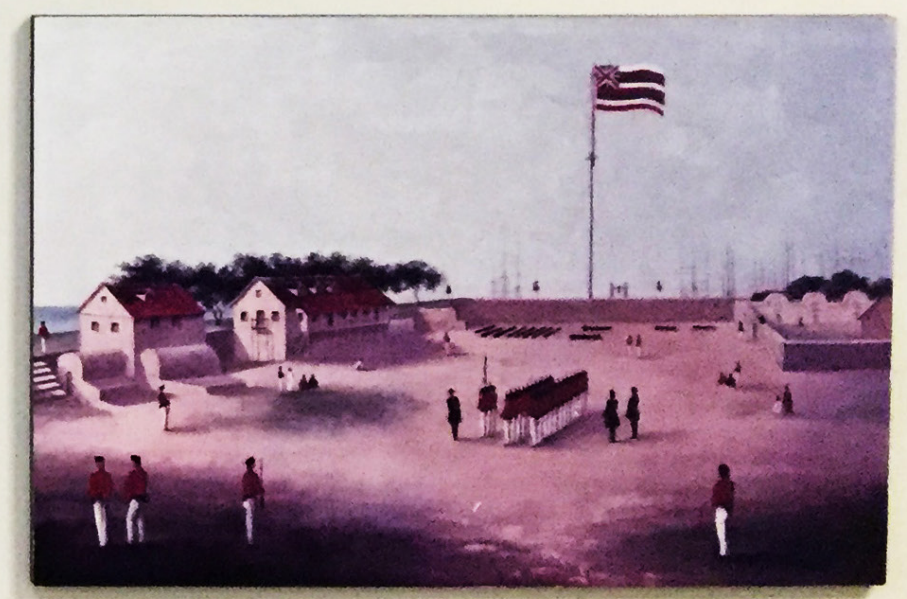
Early Courts

Kakuanaoa, Governor of Oahu, held court in his house at the Honolulu Fort. The Governor heard trials of Hawaiians, Honolulu's foreign merchants, and riotous sailors.

The first constitution (1840) set up a court system with district and tax courts throughout the islands and a Supreme Court presided over by the King and *Kuhina Nui* (Premier).

The Honolulu Fort served as both court and prison. The Governor's house is center left; prison cells are in enclosure on the right.
Photo: Honolulu Museum of Art

its at the missionary
at Lahainaluna helped
Declaration of Rights





1778 - 1848

Contact to Mahele

1848 - 1893

Mahele to Overthrow

1893 - 1941

Annexation to WWII

1941 - 1959

WWII to Statehood

1959 - Present

Statehood to Today



DERWAY ON IMPROVING THE JUDICIARY GROUNDS AS LATE AS 1919. (SEE CHRONOLOGICAL TABLE)
 (UPPER LEFT) REPHOTOGRAPHED FROM A PRINT AT ARCHIVES OF HAWAII. F & F NEG. 761.11
 (MIDDLE LEFT) REPHOTOGRAPHED FROM A PRINT FROM THE EATON MAGOON COLLECTION, ARCHIVES OF HAWAII.
 (LOWER LEFT) REPHOTOGRAPHED FROM A PHOTO BY MABEL PUTNAM CHILSON, ARCHIVES OF HAWAII. F & F 775.13A
 (ABOVE RIGHT) ARCHIVES OF HAWAII NEG. NO. 1647-A-(1). ANOTHER PRINT OF SAME PICTURE IS IN AN ALBUM.
 (BOTTOM CENTER) REPHOTOGRAPHED FROM A POSTCARD AT THE ARCHIVES OF HAWAII. F & F N G. 769.17
 (BOTTOM RIGHT) REPHOTOGRAPHED FROM PHOTO NO. 267, BL 98-GOVT., AT HAWAIIAN HISTORICAL SOCIETY.







1778 - 1848

Contact to Mahele

1848 - 1893

Mahele to Overthrow

1893 - 1941

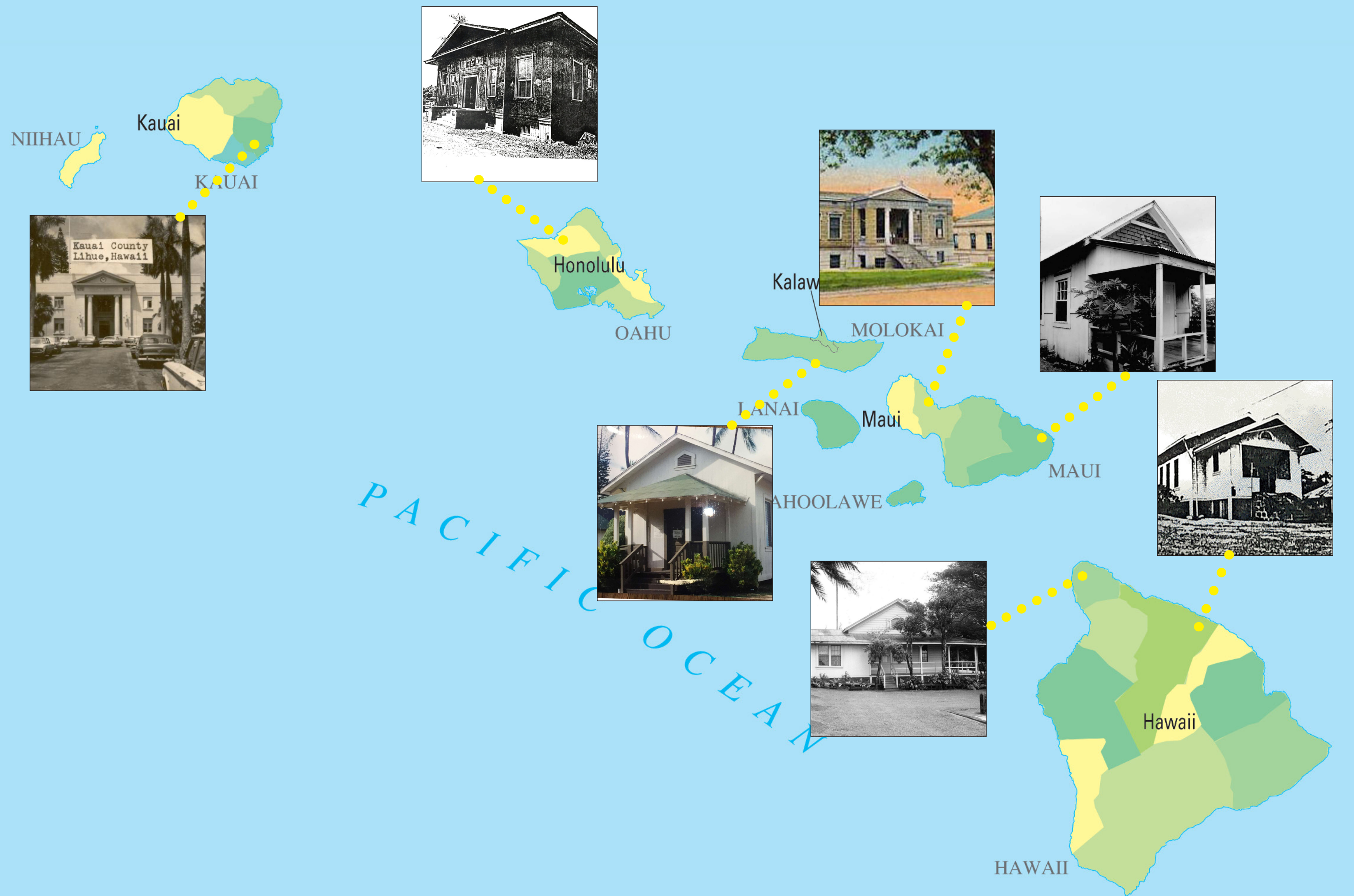
Annexation to WWII

1941 - 1959

WWII to Statehood

1959 - Present

Statehood to Today





WAIALUA, OAHU

HANA, MAUI



RURAL DISTRICT COURTS



KOHALA, KAPA'AU, HAWAI'I
 [L] KOHALA, KAPA'AUA, HAWAI'I
 [R] LAHAINA, MAUI

NIIHAU

Kauai

KAUAI



Pu'uhonua Kaulike

Lihu'e, Kauai

Anbe, Aruga & Ishizu

Architects

2005



Abner Paki Hale

Kaneohe, Oahu

AM Partners

2003



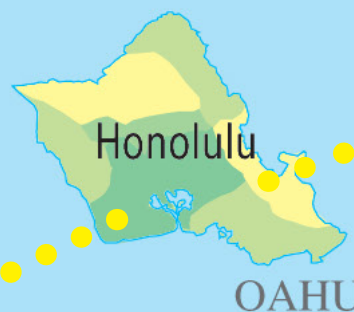
Ronald T Y Moon

Judiciary Complex

Kapolei, O'ahu

AHL

2010



Honolulu

OAHU

Kalawao

MOLOKAI

LANAI

Maui

MAUI

KAHOOLAWE

PACIFIC OCEAN

Hale Kaulike

Hilo, Hawai'i

Durrant Media Five

2009



Kona Courthouse

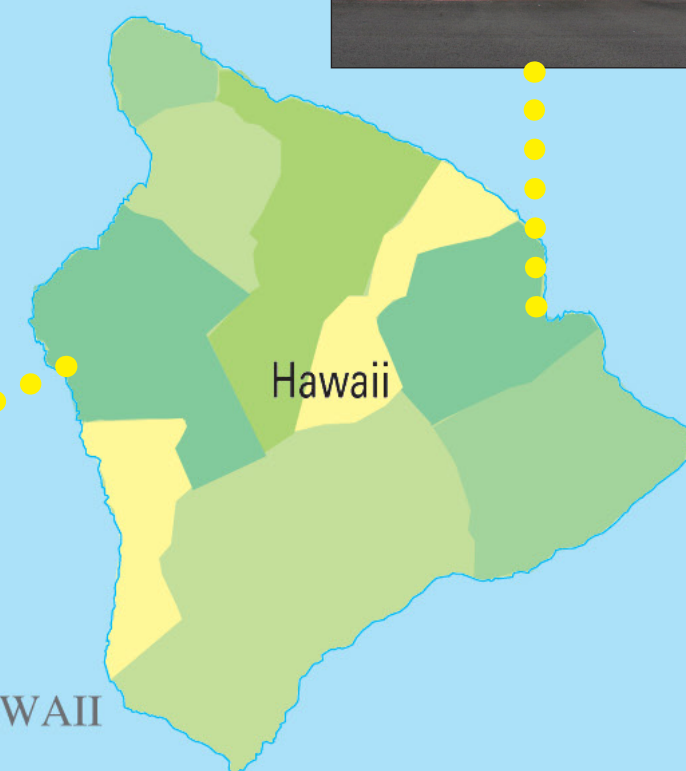
Kona, Hawai'i

AHL

2019



HAWAII

















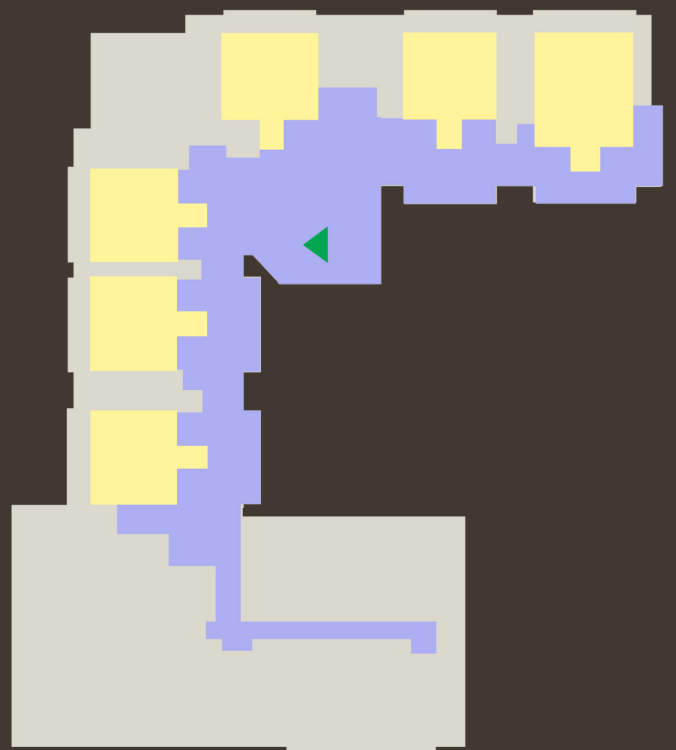




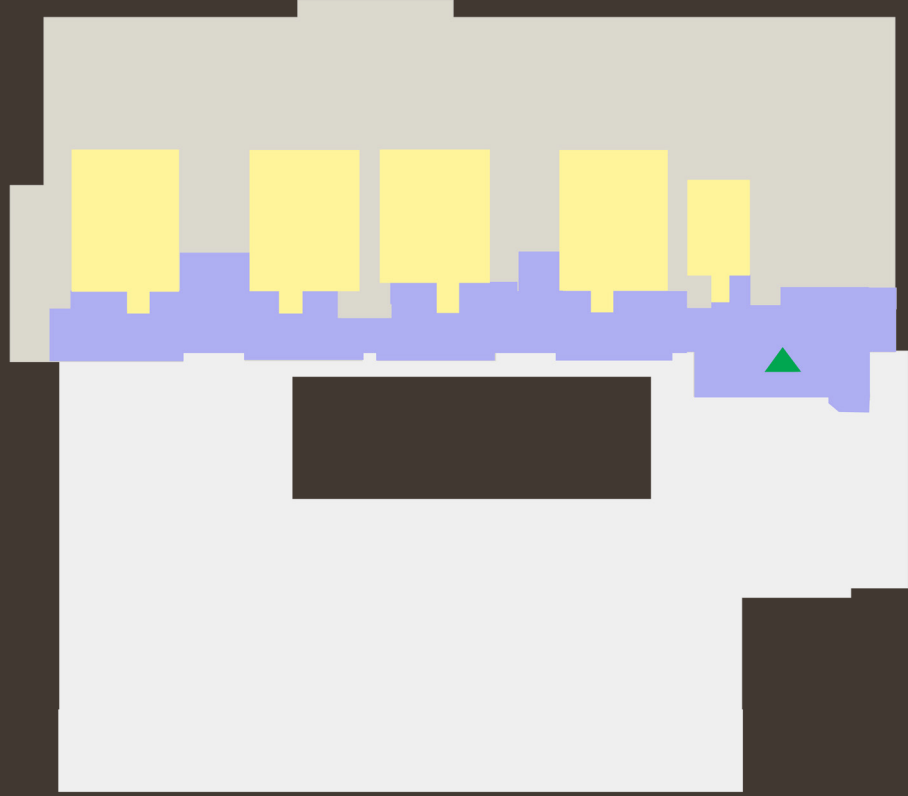




RONALD T Y MOON
JUDICIARY COMPLEX
KAPOLEI



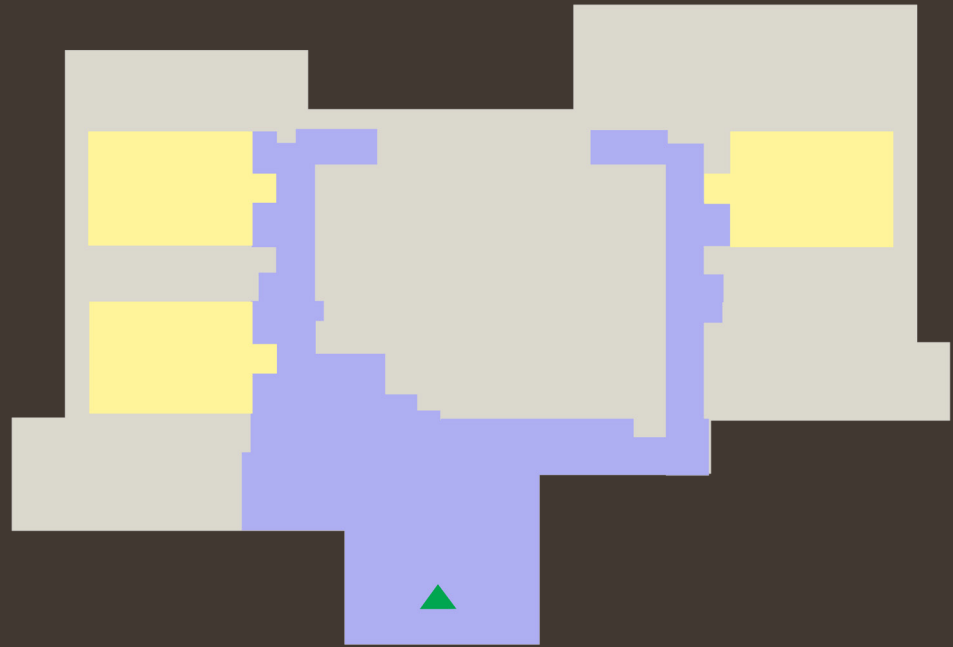
HALE KAULIKE
HILO



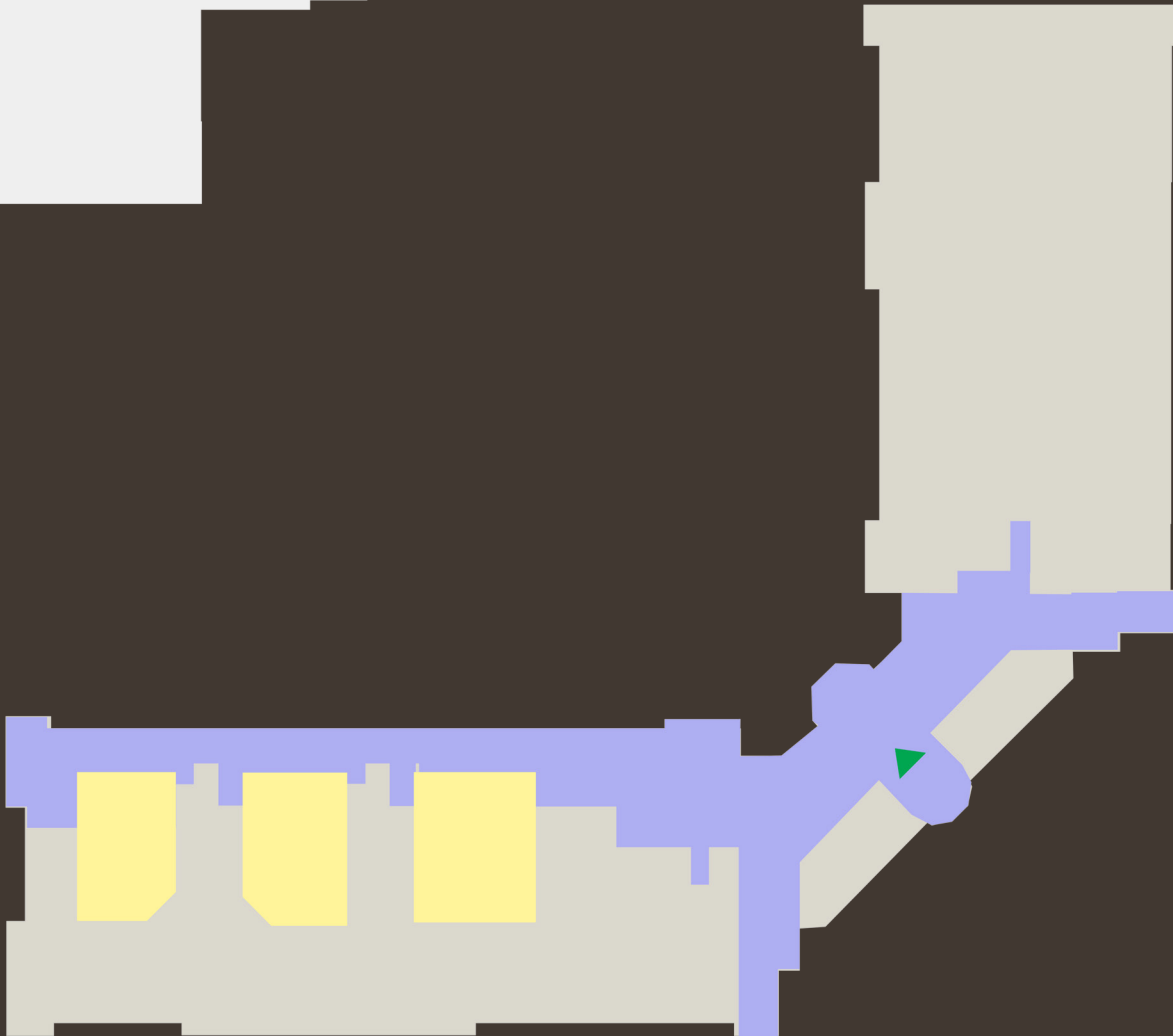
ABNER PAKI HALE
KANEEOHE

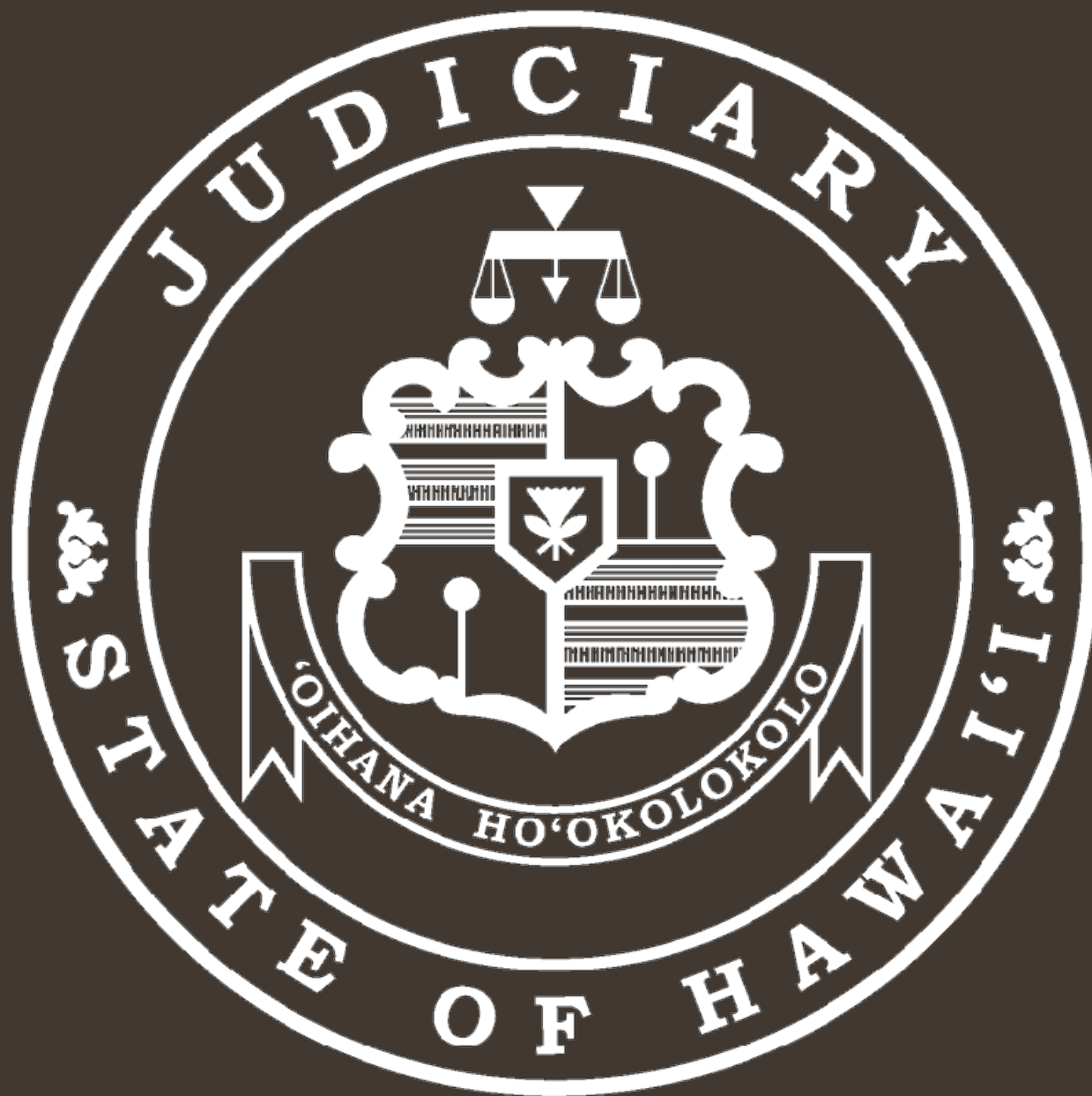


KONA COURTHOUSE
KONA



PU`UHONUA KAULIKE
KAUA'I





The mission of the Judiciary, as an independent branch of government, is to administer justice in an impartial, efficient and accessible manner in accordance with the law.

NIIHAU

Kauai

KAUAI



Pu'uhonua Kaulike

Lihu'e, Kauai

Anbe, Aruga & Ishizu

Architects

2005



Abner Paki Hale

Kaneohe, Oahu

AM Partners

2003



Ronald T Y Moon Judiciary Complex

Kapolei, O'ahu

AHL

2010

Honolulu

OAHU

Kalawao

MOLOKAI

LANAI

Maui

MAUI

KAHOOLAWE

PACIFIC OCEAN

Hale Kaulike

Hilo, Hawai'i

Durrant Media Five

2009



Kona Courthouse

Kona, Hawai'i

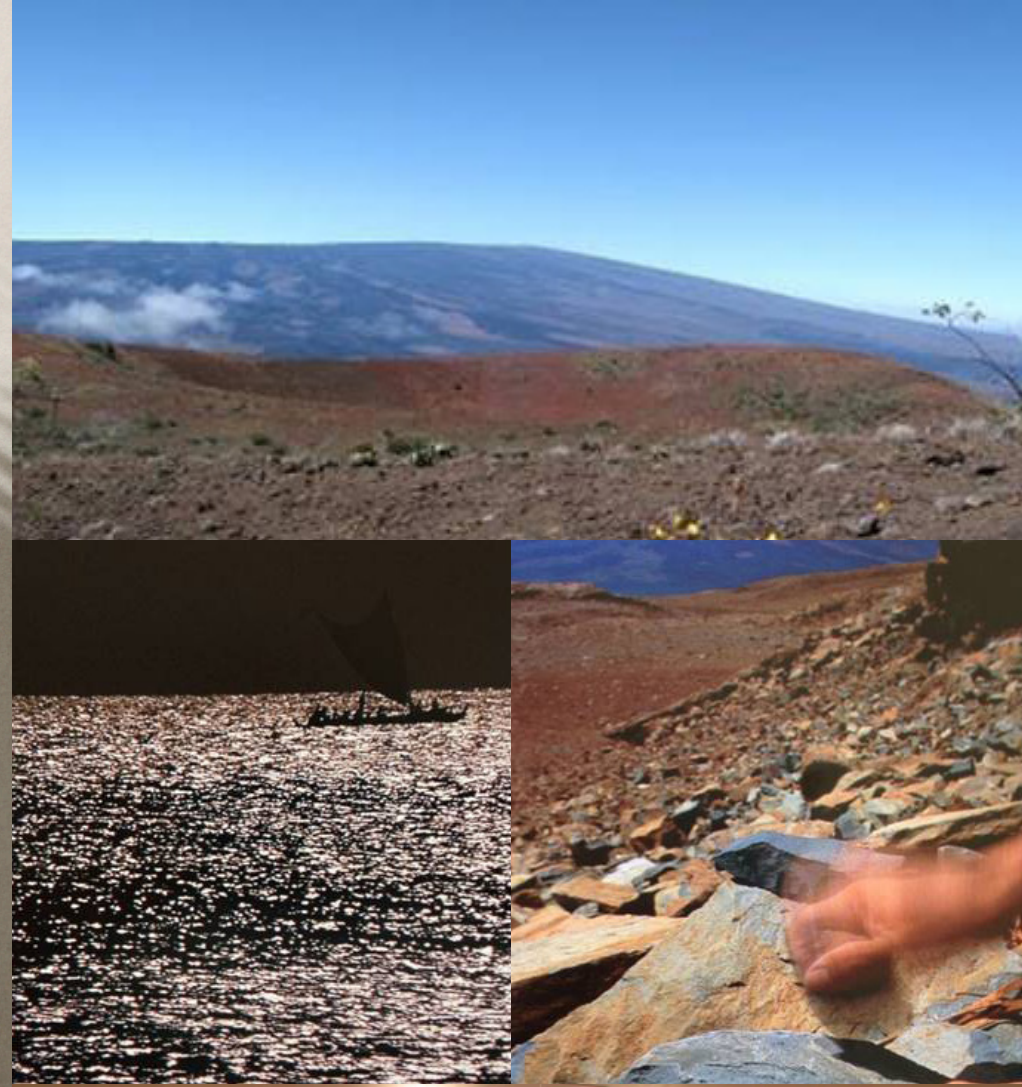
AHL

2019



Hawaii

HAWAII

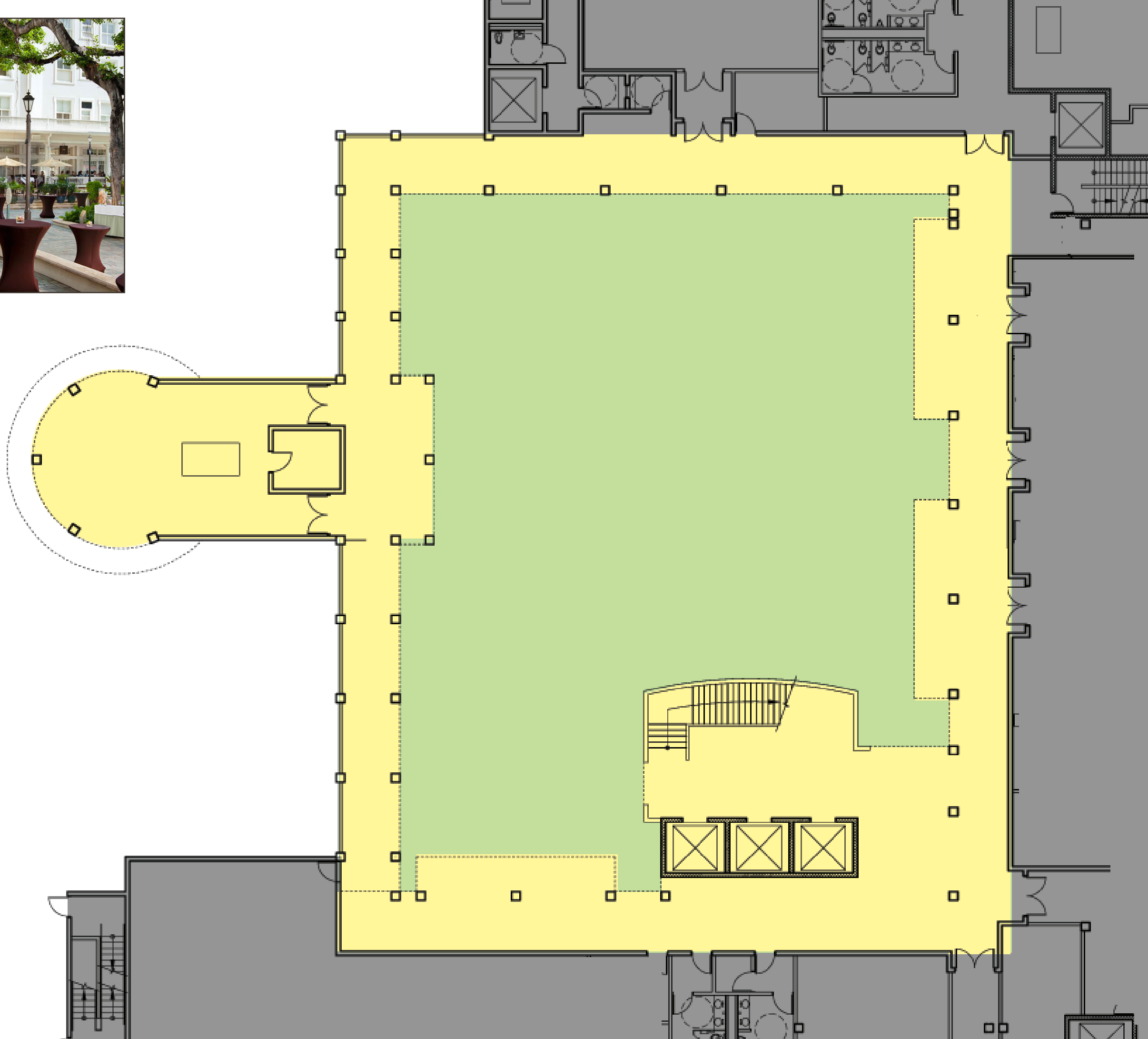


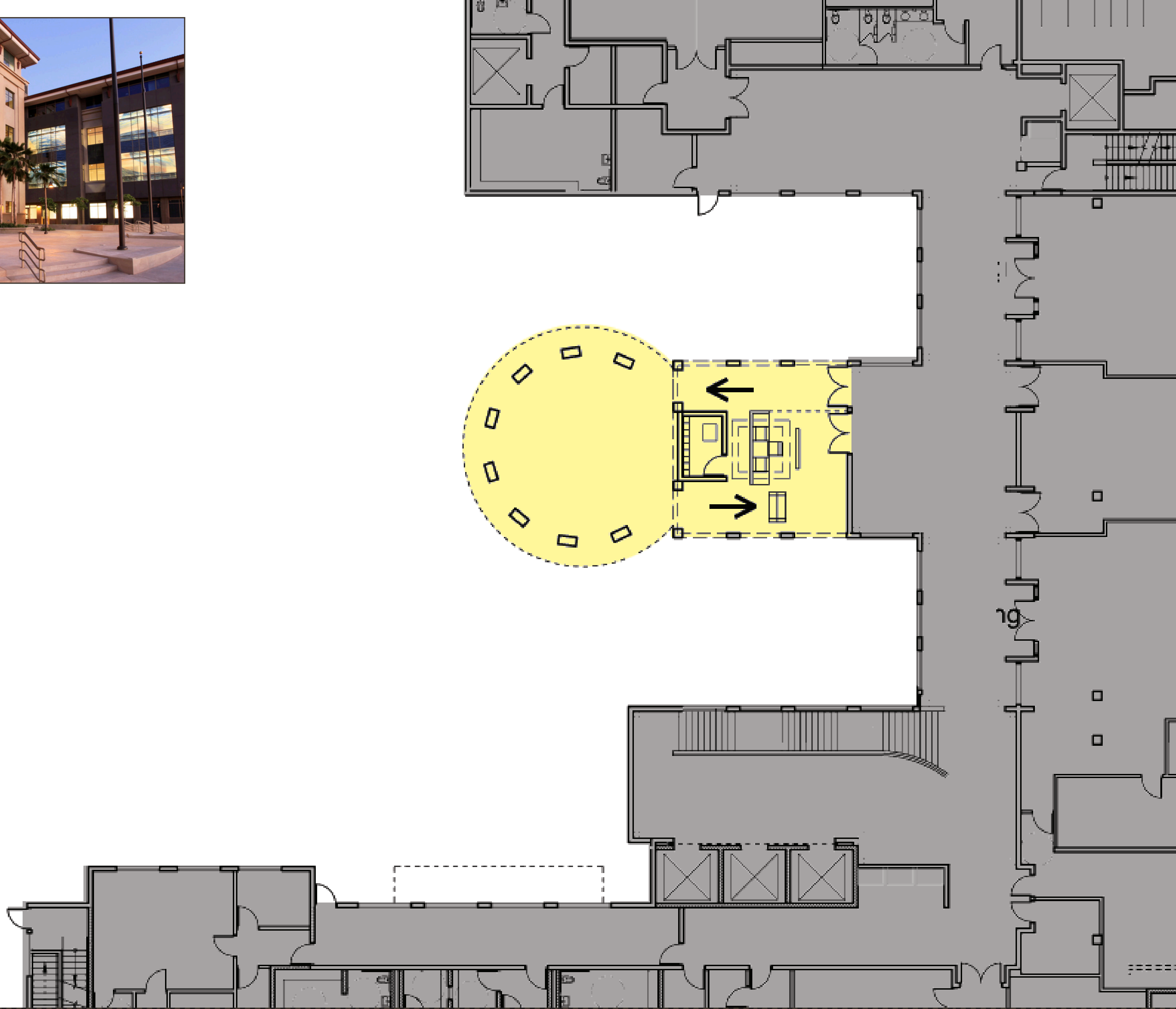
MEANING AND CULTURE





OPEN & CARING SOCIETY







LANGUAGE ID CARDS

PLEASE TAKE ONE IN YOUR LANGUAGE & SHOW COURT STAFF

廣東話 / 广东话

(Traditional) 你好, 我的名字是:

我說廣東話。請幫我找一位會說廣東話的人, 以便溝通。謝謝。

(Simplified) 你好, 我的名字是:

我说广东话。请帮我找一位会说广东话的人, 以便沟通。谢谢。

CANTONESE

Kapasen Chuuk

Ran allim, itei

Pukutan ai fos, fosun Chuuk.
Kose mochen kuttato emon mi sile kapasen
fonuwe Killisou fengen.

CHUUKES

Ilokano

Hello, Siak ni

Ilokano ti pagsasaok. Isapulanakman ti maysa a
makasao ti Ilokano tapno mabalintay ti
agsasanti

ILOKANO

日本語

こんにちは、私は

と申します。

私の話す言語は日本語です。会話ができるように
日本語の話者を探してください。

よろしくお願いします

JAPANESE

한국어

안녕하십니까. 제 이름은

입니다.

제가 사용하는 언어는 한국어입니다. 의사소통이 가능
하도록 한국어 통역사를 찾아 주시기 바랍니다.
감사합니다.

KOREAN

Kosrae

Hello, inek pa

Ngakahs Kosrae. Nuhnahk muhnahs sokack sie
mwet muh etuh kash luhk uh nga ei in sramsram.
Kulo

KOSRAEAN

國語/普通话

(Traditional) 您好, 我的名字是:

我說 國語(普通話)。請幫我找一位會說國語(普通話) 的人,
以便溝通。謝謝。

(Simplified) 您好, 我的名字是:

我说普通话。请帮我找一位说普通话的人, 以便沟通。谢谢。

MANDARIN

Kajin Majôl

lakwe, eta in

Kajin eo aô ej Kajin Majôl. Joi im bukôt tok juôn
Armij eo ejelâ Kajin e aô bwe kemro en mârôh
k

MARSHALLESE

Pohnpei

Kaselehlie, edei

I kin lokaiahn Pohnpei. I sohte kak lokaiahn wai
mwahu. Komw kak rapahkhda emen me kak
lokaiahn Pohnpei, pwe sen kak kosoi pene.
Kalahnge

POHNPEIAN

Gagana Samoa

Talofa, O lo'uigoa o

Ou te tautala i le gagana Samoa.
Fa'amolemole, sa'ili mai se tasi e mafia ona
tautala i la'u gagana, ina ia mafia ona talatalanoa
ma'ua. Fa'afetai.

SAMOAN

Español

Hola, mi nombre es

El idioma que hablo es Español. Por favor
encuentre a alguien que hable mi idioma a fin
de poder comunicarnos. Gracias.

SPANISH

Tagalog

Hello, ako si

Ang wika ko ay Tagalog. Maaari lamang na
ihanap ako ng isang nakakapagsalita sa aking
wika upang pwede tayong makapag-usap.
Salam

TAGALOG

Lea faka-Tonga

Malo e lelei, ko hoku hingo ko

Ko e lea 'oku ou ngaue'aki ko e: Lea faka-Tonga.
'Oku 'ikai ke lelei 'eku lea fakapapalagi.
Fakamolemole kae kumi mu'a ha taha 'oku poto
lelei he lea faka-Tonga ke ma lava 'o
femahino'aki

TONGAN

Tiếng Việt

Xin chào, tên tôi là

Tôi nói tiếng Việt. Xin vui lòng tìm một người nào
đó có thể nói tiếng của tôi để chúng ta có thể nói
chuyện với nhau
Xin cảm ơn

VIETNAMESE

(My Language)

Hello, my name is

The language I speak is

Please find someone who can speak my language
so we can talk to each other. Thank you.

This project was supported by Award No. 2010-DJ-BX-0404,
awarded by the Bureau of Justice Assistance, Office of Justice
Programs,
Department

OTHER LANGUAGES



Courts in the Community

Drug Court

DWI Court

Environmental Courts

Girls Court

HOPE Probation

Mental Health Court

Veterans Treatment Court







KO'OLAUPOKO



KAUAI

Uniquely Hawai'i: Best Practices in Five Recent Courthouses



KO'OLAUPOKO



HILO



KONA