



# The Changing Face of Juvenile Justice

# Copyright Notice

This presentation is protected by US and International Copyright laws. Reproduction, distribution, display and use of the presentation without written permission of the speaker is prohibited.

© The American Institute of Architects 2016

# AIA/CES Compliance Statement

“AIA Knowledge” is a Registered Provider with The American Institute of Architects Continuing Education Systems (AIA/CES). Credit(s) earned on completion of this program will be reported to AIA/CES for AIA members. Certificates of Completion for both AIA members and non-AIA members are available upon request.

This program is registered with AIA/CES for continuing professional education. As such, it does not include content that may be deemed or construed to be an approval or endorsement by the AIA of any material of construction or any method or manner of handling, using, distributing, or dealing in any material or product.

Questions related to specific materials, methods, and services will be addressed at the conclusion of this presentation.

# AIA/CES Reporting Details

All attendees will be eligible to receive AIA continuing education for attending this course by completing the electronic form sent via email after the conference.

Continuing education questions can be directed to [aaaj@aia.org](mailto:aaaj@aia.org).

# Course Description

Evidence-based program and facility design helps counties respond to a new juvenile landscape. In most states, while the way we address juvenile crime and truancy is changing to more evidence-based models, many counties are still challenged to deliver a new array of services within facilities that are not designed for that purpose.

Many states are moving away from housing youth to education and program based facilities, while other states are changing the age criteria defining a juvenile which will increase the capacity of the facility. We will discuss those changes that have occurred and address how counties implementing new programs and services to address juvenile offenders, face a greater need to change how their buildings are working.

# Learning Objectives

1. Understand how a program and design can respond to the changing requirements and program needs of the juvenile justice system.
2. Understand how the interior environment can support trauma-informed design solutions, maintain a safe, secure, durable facility, and reflect program needs.
3. Comprehend the need for varying learning/education environments and design solutions for at-risk youth in detention and non-detention environments.
4. Participants will understand diverse design solutions that could exist depending on specific program requirements of a juvenile facility.



# THE CHANGING FACE OF JUVENILE JUSTICE

EVIDENCE-BASED PROGRAM AND FACILITY DESIGN HELPS COUNTIES RESPOND TO A NEW LANDSCAPE

# THE CHANGING FACE OF JUVENILE JUSTICE

EVIDENCE-BASED PROGRAM AND FACILITY DESIGN HELPS COUNTIES  
RESPOND TO A NEW LANDSCAPE



Andy Pitts, AIA  
Principal  
TreanorHL



John Eisenlau, AIA  
Justice Studio Leader  
TreanorHL



Drew Hustedde, AIA  
Architect  
TreanorHL



Erik Theis  
Court Administrator, Twenty-Ninth  
Judicial Circuit Court, Missouri



Tamara Rosser  
Director of Human Services,  
Lynchburg, Virginia



# The Numbers tell the story...

- Nearly **93%** of detained youth experienced **one or more severe traumas**
- **58%** experienced **6+ traumatic events**
- **93%** had at least one co-occurring **psychiatric disorder**
- Over **11%** diagnosed with **PTSD**

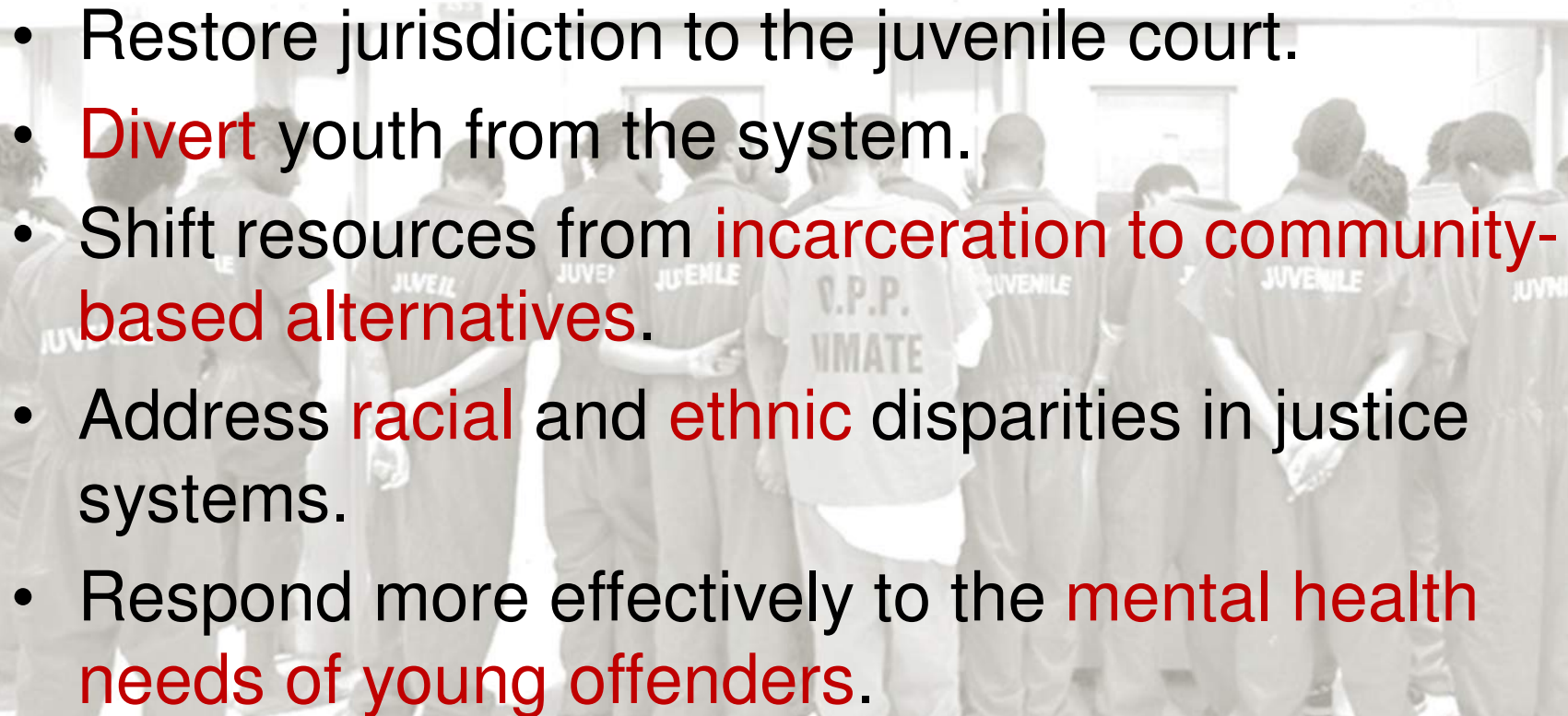
Source: Annie E. Casey Foundation

# Why Reform...?

Youth who spend time in **custody** are

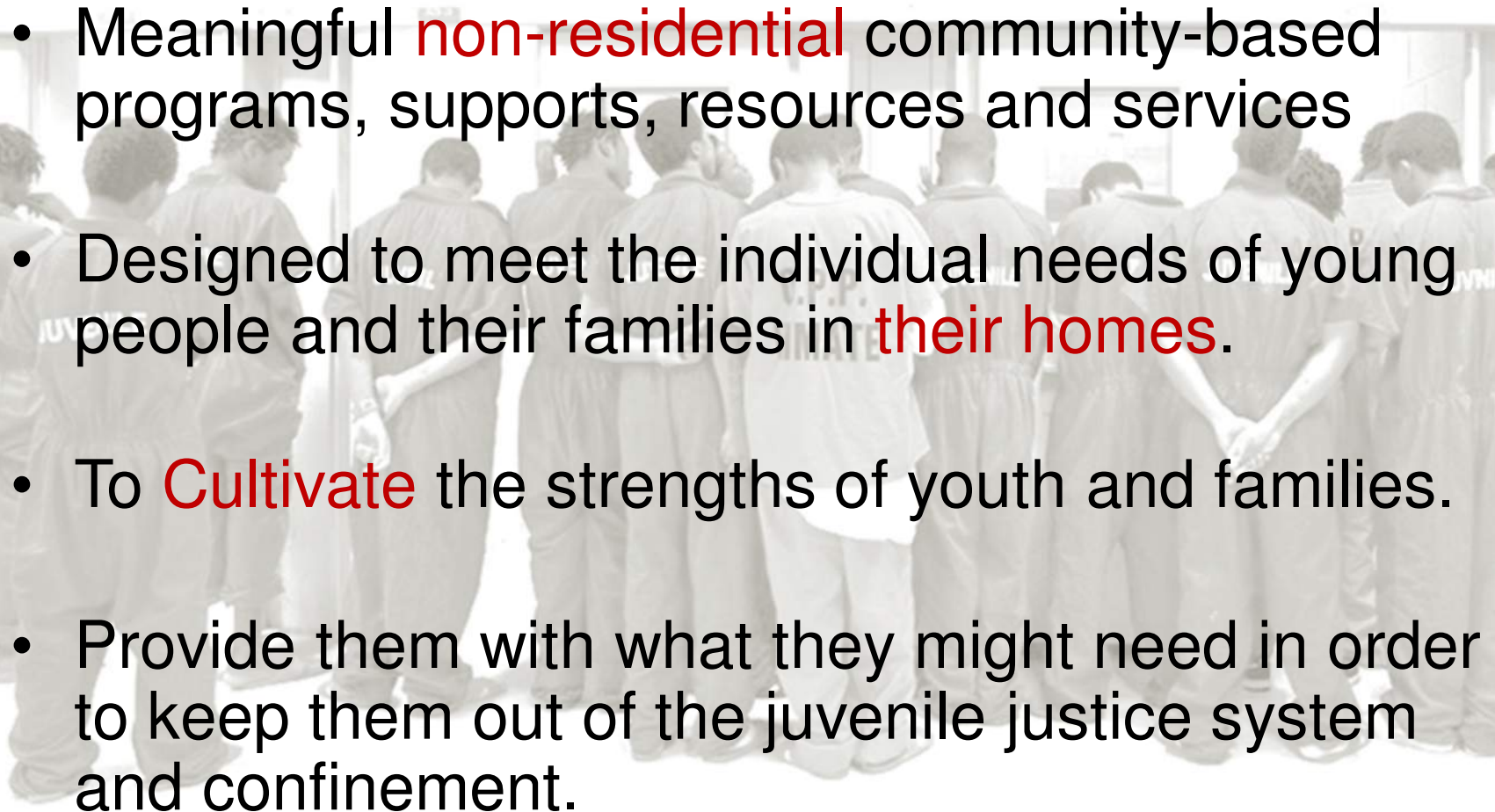
- less likely to complete high school,
- less likely to find employment and
- more likely to suffer mental health problems.

# Emerging Trends

- 
- Restore jurisdiction to the juvenile court.
  - **Divert** youth from the system.
  - Shift resources from **incarceration to community-based alternatives.**
  - Address **racial** and **ethnic** disparities in justice systems.
  - Respond more effectively to the **mental health needs of young offenders.**

Source: National Conference of State Legislators

# Developing a Continuum of Care

- 
- A group of young people, some wearing uniforms with "JUVENILE" on the back, are standing in a circle in a room with large windows. The image is faded and serves as a background for the text.
- Meaningful **non-residential** community-based programs, supports, resources and services
  - Designed to meet the individual needs of young people and their families in **their homes**.
  - To **Cultivate** the strengths of youth and families.
  - Provide them with what they might need in order to keep them out of the juvenile justice system and confinement.

Source: Annie E. Casey Foundation

# Case Study Projects



A grayscale map of the United States with state boundaries outlined. The state of Vermont is highlighted in a lighter shade of gray. An orange star is placed on the eastern border of Vermont, near the New Hampshire border. The text "Burlington, VT" is positioned to the left of the star.

# Woodside Juvenile Rehabilitation Center

Burlington, VT

Burlington / East Essex, Vermont



# Woodside Juvenile Rehabilitation Center

## **Vermont Department of Children and Families, Family Services Division**

Provide support and services to the following youth and their families:

- Youth at risk of harming themselves or others
- Youth on juvenile probation
- Youthful offenders

# Woodside Juvenile Rehabilitation Center

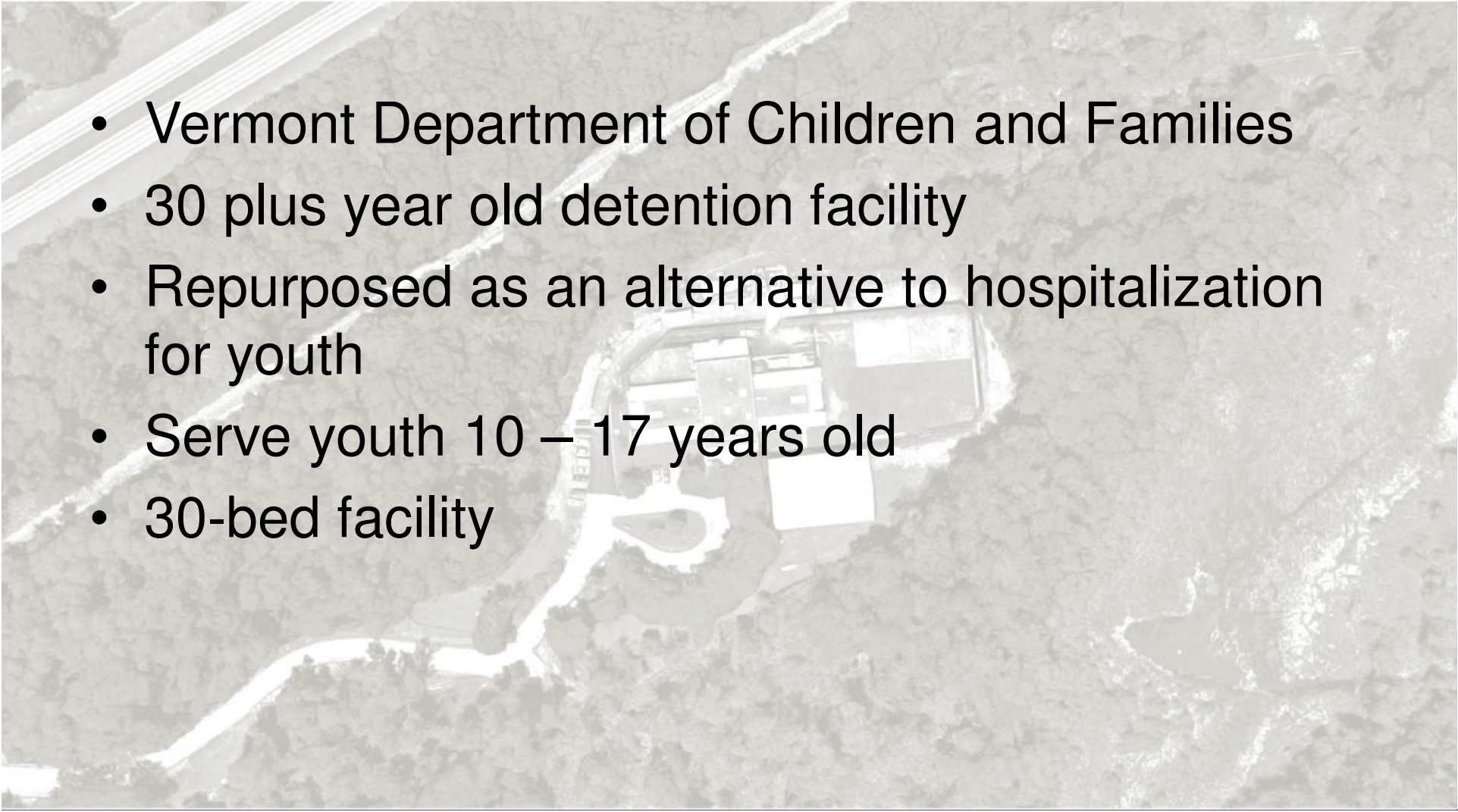
## **BALANCED & RESTORATIVE JUSTICE:**

*a balanced, restorative approach to juvenile justice that emphasizes:*

- **Reducing** the number of youth involved with the juvenile justice system;
- **Repairing** the harm caused by delinquent behaviors; and
- Giving victims and community members **a voice in the process.**



# Woodside Juvenile Rehabilitation Center

- 
- Vermont Department of Children and Families
  - 30 plus year old detention facility
  - Repurposed as an alternative to hospitalization for youth
  - Serve youth 10 – 17 years old
  - 30-bed facility

# Woodside Juvenile Rehabilitation Center

- Maintain **30-bed** facility; step-up housing
- Staff works **60-hour** shifts
- Provide program, education, counseling and recreation areas
- **Therapeutic residential** environment

**DETENTION / BEHAVIOR MODIFICATION**



**TREATMENT**



# Woodside Juvenile Rehabilitation Center



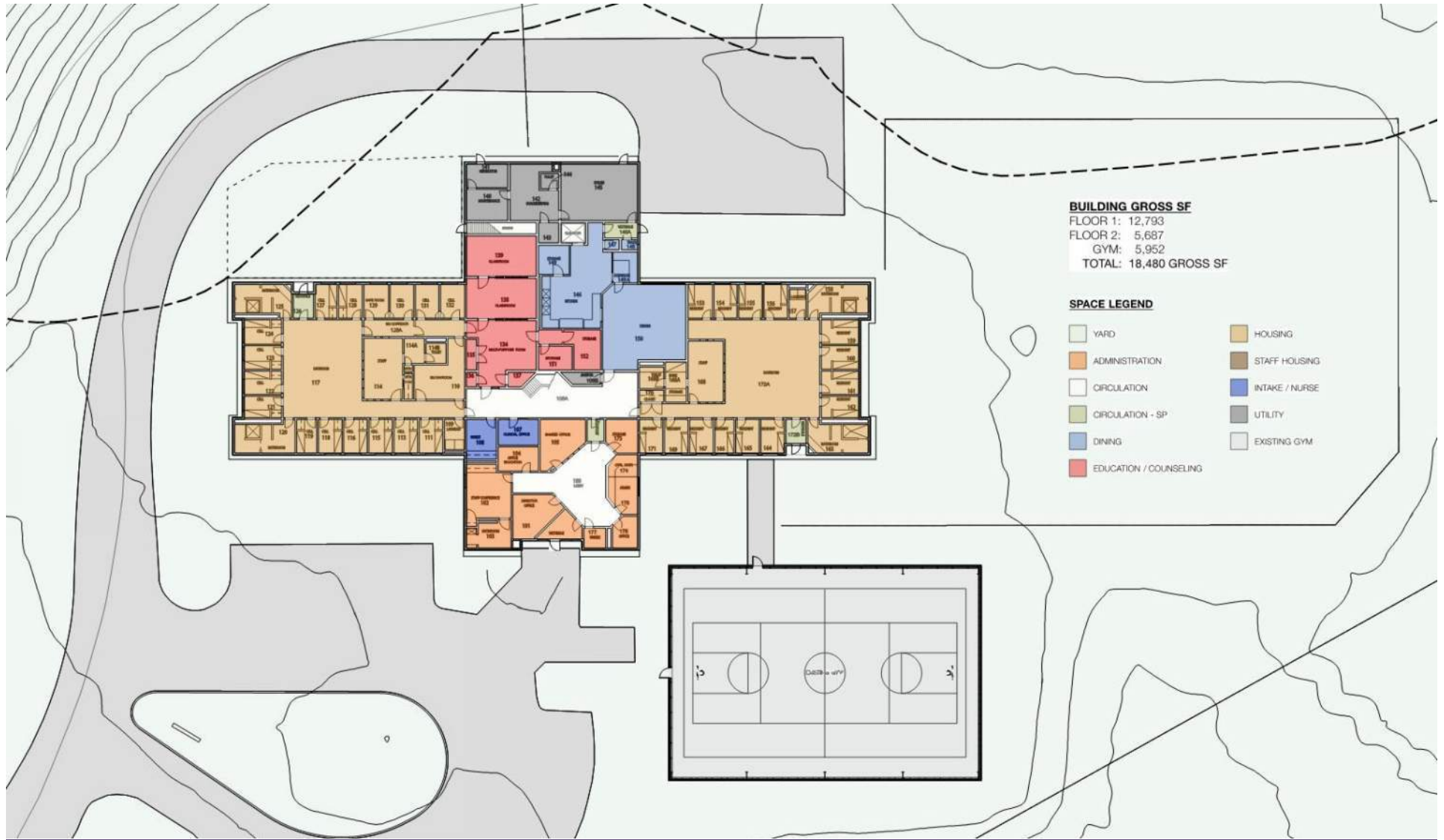


# Woodside Juvenile Rehabilitation Center



The Changing Face of Juvenile Justice

# Woodside Juvenile Rehabilitation Center

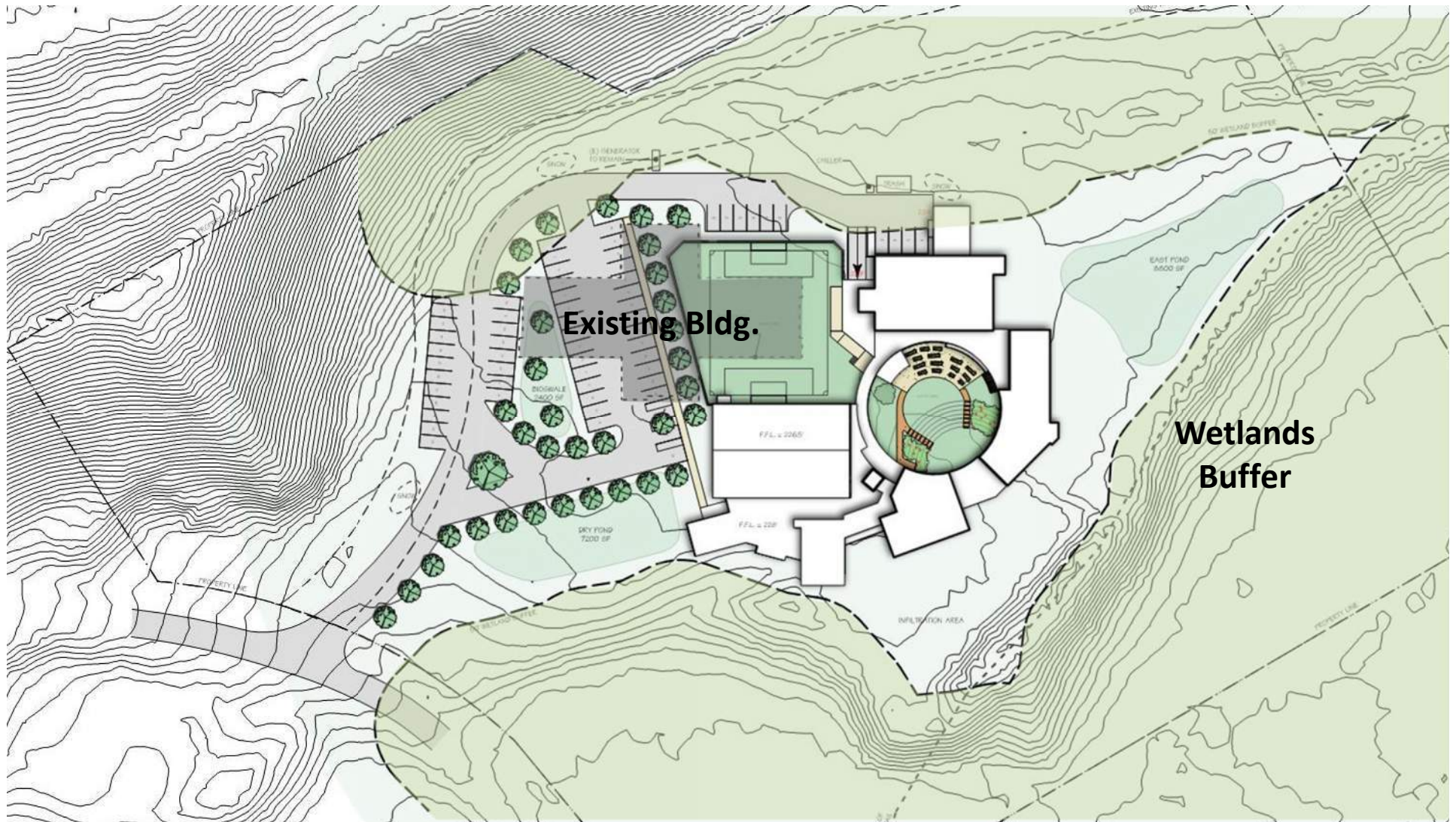


# Woodside Juvenile Rehabilitation Center





# Woodside Juvenile Rehabilitation Center





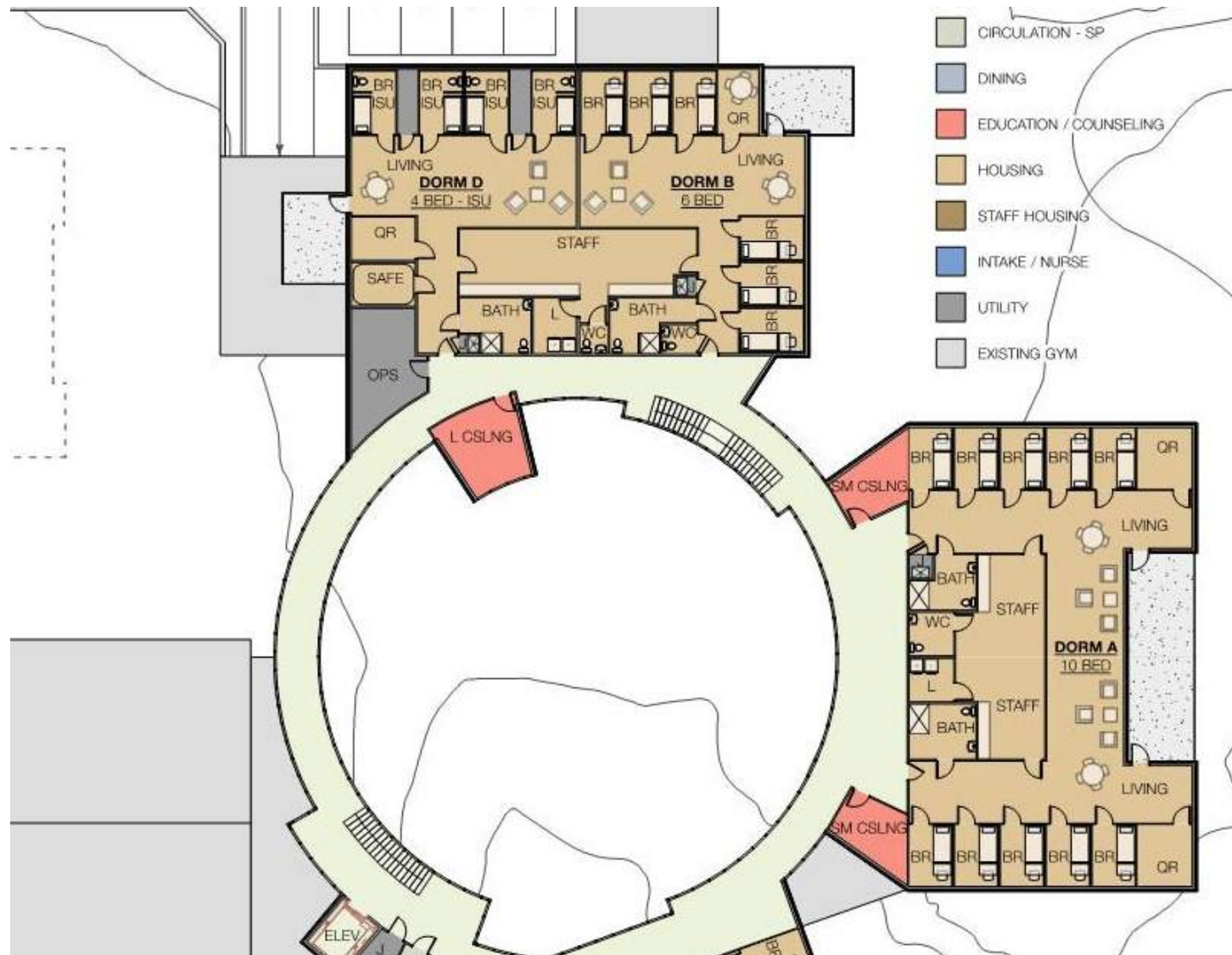
[illegible]

## The Changing Face of Juvenile Justice



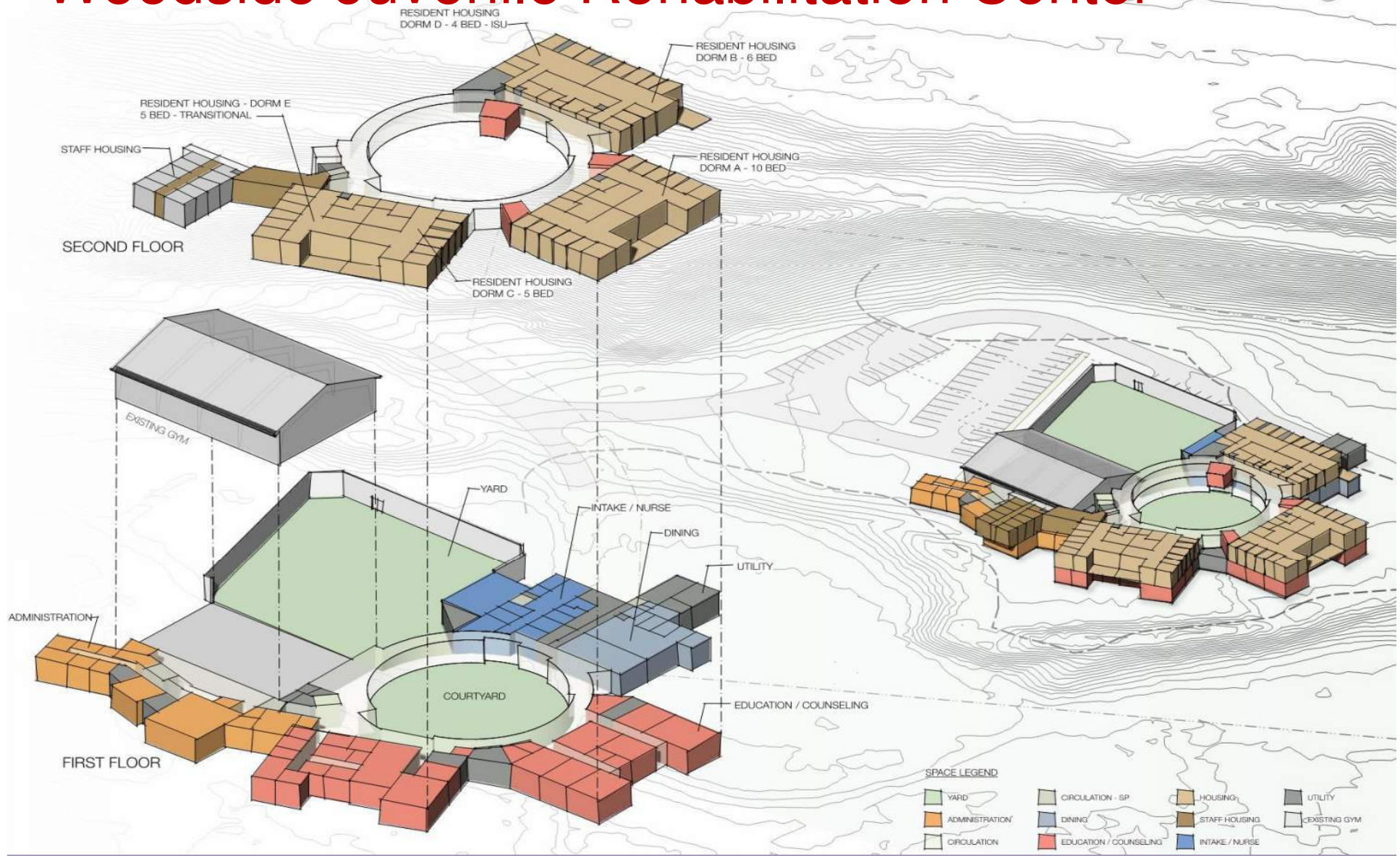
# Woodside Juvenile Rehabilitation Center

# Woodside Juvenile Rehabilitation Center





# Woodside Juvenile Rehabilitation Center



# Lynchburg Juvenile Services Group Home

Lynchburg, VA 

City of Lynchburg, Virginia

# Lynchburg Juvenile Services Group Home

- Population 80,212 (2016 Census)
  - 6% growth since 2010
  - Largest growth is persons under 18 years
    - 66% White
    - 28% Black
    - 6% Other
- Medium household income : \$39,589
- Persons in Poverty: 23%





# Lynchburg Juvenile Services Group Home

## TRENDS:

- Serving more **females** with significant abuse history;
- Serving more youth with significant **mental health** issues;
- Serving more youth on **prescribed medication** for mental and physical needs;
- Serving more youth who identify as **gay or lesbian**;
- Serving more youth whose **parents are seeking to relinquish custody**.

# Lynchburg Juvenile Services Group Home

- Providing services to youth and families since 1974;
- Operated from three facilities throughout the City; historical homes dating back to 1850's;
- The layout of these facilities were not conducive to providing adequate sight and sound supervision or consistent programming;
- Didn't have staff to adequately manage three facilities and meet the needs of the youth and their families;
- Obtained approved to move forward with Needs Assessment and the establishment of a reserve account (savings from budget);
- Had about \$2 million saved and bonded the remaining \$4.4 million

# Lynchburg Juvenile Services Group Home

## Lynchburg Juvenile Services Complex

- 28 bed, co-ed facility
  - Completed in July 2016,
  - Occupied in August 2016
  - Co-located adjacent to the existing 48-bed Juvenile Detention;
  - 16 male and 12 female beds
- Licensed through the Virginia Department of Juvenile Justice and certified through the Interdepartmental Standards
- PREA (Prison Rape Elimination Act) certified



# Lynchburg Juvenile Services Group Home

- Provides supervision and services to juvenile ages 12-17
  - Youth who are before the Juvenile Domestic and Relations Court, and
  - Care and custody of Social Services
- The facility serves more than 200 juveniles annually from 5 counties and 2 cities
- Average length of stay for shelter is 24 days
  - Juveniles can stay up to 12 months if placed in the long-term program.
- The staff ratio is 1 staff to 8 youth.
- Charge a daily per diem of \$154 as well local and state funding.

# Lynchburg Juvenile Services Group Home

Benefits of co-location = **Reduced cost** by maximizing the use of all available resources

- staff trained to work in both facilities
- coordinated food services,
- coordinated laundry services,
- shared medical services;
- coordinated counseling services,
- shared case management services, and
- shared fleet.

# Lynchburg Juvenile Services Group Home

- Community **Partnerships:**
  - Local school systems
  - Local mental health providers
  - Local colleges
  - Local churches
  - Local community centers (private and public)
  - Local Workforce Investment Board



# Lynchburg Juvenile Services Group Home



The Changing Face of Juvenile Justice

# Lynchburg Juvenile Services Group Home





# Lynchburg Juvenile Services Group Home



The Changing Face of Juvenile Justice

# Lynchburg Juvenile Services Group Home



The Changing Face of Juvenile Justice



# Lynchburg Juvenile Services Group Home



The Changing Face of Juvenile Justice



# Lynchburg Juvenile Services Group Home



# Lynchburg Juvenile Services Group Home



The Changing Face of Juvenile Justice

# Lynchburg Juvenile Services Group Home



The Changing Face of Juvenile Justice



# Lynchburg Juvenile Services Group Home




# Lynchburg Juvenile Services Group Home





# Jasper County Juvenile Facility

Jasper County, MO 

Twenty-Ninth Judicial Circuit Court, Missouri

Jasper County, Joplin, Missouri

# Jasper County, Missouri

- Population 117,404 (2010 Census)
  - 88.24% White
  - 6.84% Hispanic,
  - 1.93% Black
  - 1.51% Native American
  - .99% Asian
  - .25% Pacific Islander
  - 3.89% other races,
- Medium household income \$31,323

# Jasper County, Missouri

## Adopted Juvenile Detention Alternative Initiative

*(sponsored by the Annie E. Casey Foundation)*

- Nationwide effort to eliminate unnecessary and inappropriate use of juvenile secure detention and to reduce racial disparities.
- Started in 1992- grown to 300 jurisdictions, 39 states

# Jasper County, Missouri

## Juvenile Detention Alternative Initiative

- Shifted paradigm from **detention programming** to **diversion programs**
- Focus on skill building, pro-social activities, cognitive development, and competency building.

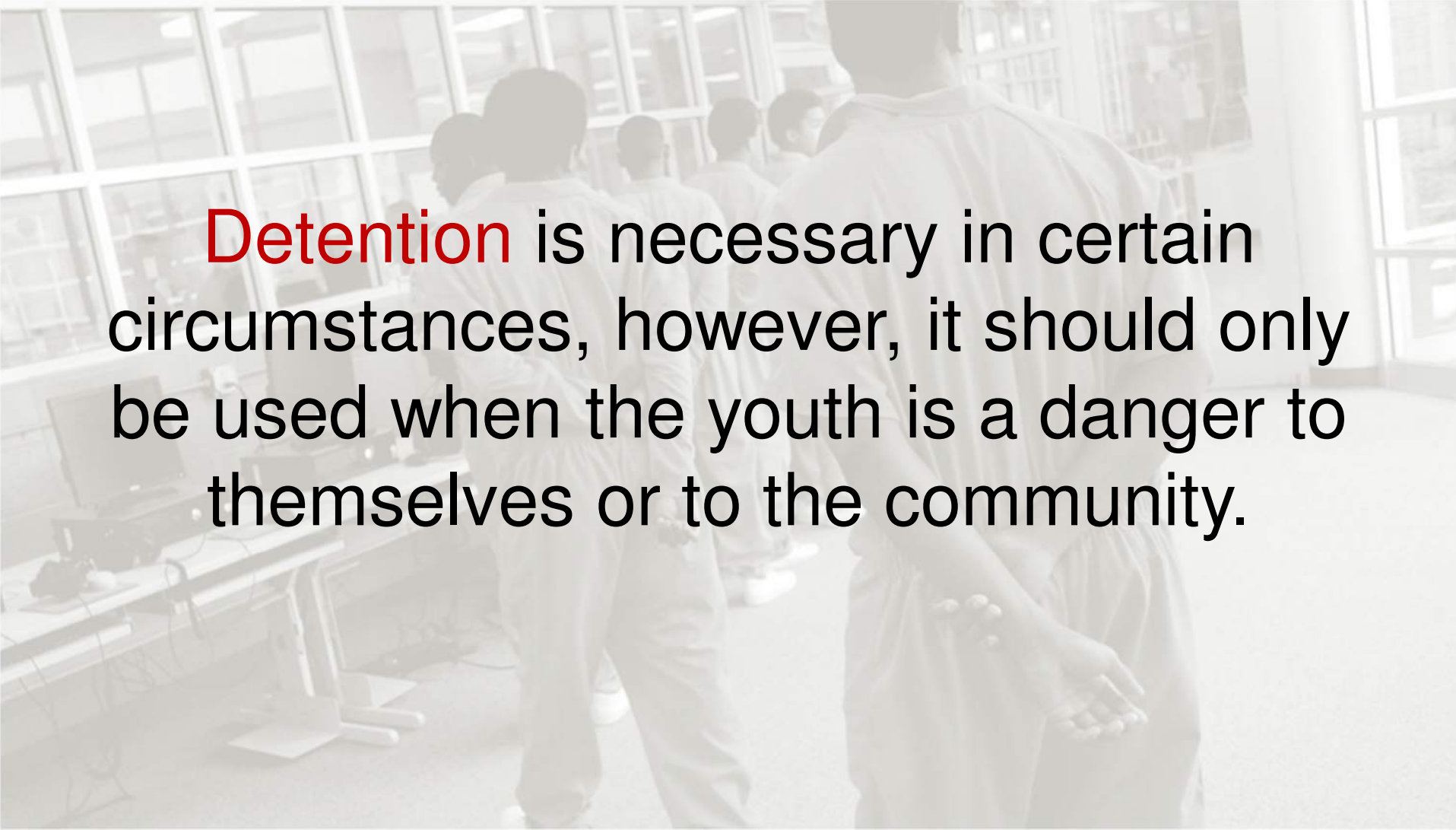
# Jasper County, Missouri

## Juvenile Detention Alternative Initiative

- **Before adopting:** Placed 835 kids into detention for total of 6154 days.
- **After adopting:** Detained only 44 kids for a total of 515 days.
- **2016 Statistics:**
  - Referrals =1636 (Status, Child Abuse/Neglect, and Delinquency)
  - Cases filed =258
- **84%** cases received handled informally or diverted



# Jasper County, Missouri



**Detention** is necessary in certain circumstances, however, it should only be used when the youth is a danger to themselves or to the community.

# Jasper County, Missouri



The Changing Face of Juvenile Justice



# Jasper County, Missouri





# Jasper County, Missouri



# Jasper County, Missouri



1 View Looking South Towards main Courtyard Entrance



2 View Looking North into Courtyard from Interior Common Area



3 Birds-eye View looking into South Courtyard



# Jasper County, Missouri



1 View looking North into Courtyard



2 View looking South into Courtyard From Dayroom



3 Birds-eye View looking into North Courtyard





# Jasper County, Missouri



SURFACE MATERIALS: STAMPED CONCRETE, PAVERS, TURF



SEATING: CAST IN PLACE CONCRETE SEAT WALLS, TREATED WOOD BENCHES, TURF BERMS

# Jasper County, Missouri



The Changing Face of Juvenile Justice



# Jasper County, Missouri



The Changing Face of Juvenile Justice



# Jasper County, Missouri



The Changing Face of Juvenile Justice


# Brazos County Juvenile Justice Center

Brazos County, Bryan, Texas

Brazos County, TX

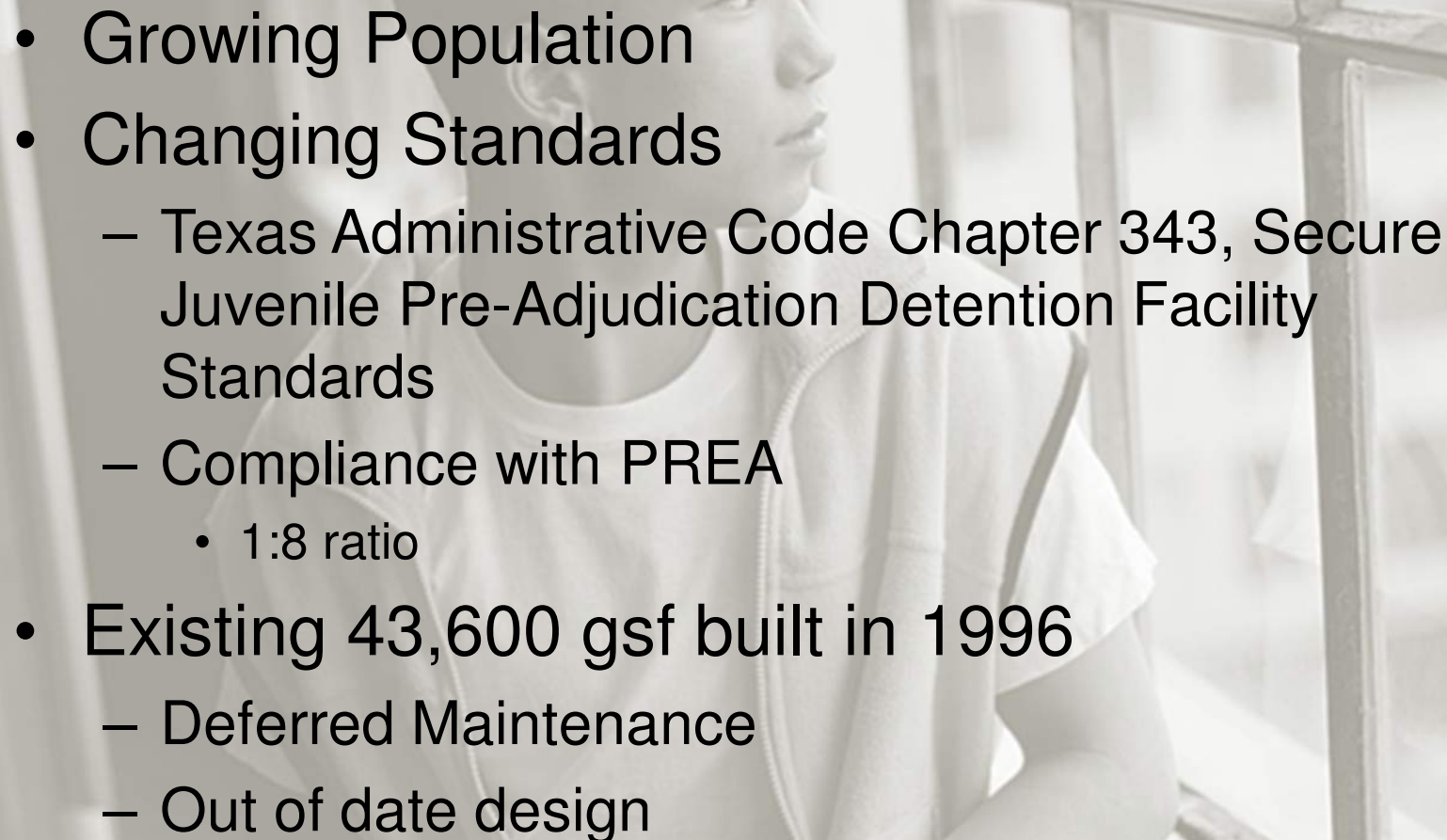


# Brazos County, Texas

- Population 220,417 (2016 Census)
  - 13% growth since 2010
  - Largest growth is persons under 18 years
    - 56% White
    - 25% Hispanic
    - 11% Black
    - 8% Other
- Medium household income : \$39,808
- Persons in Poverty: 24%



# Brazos County Juvenile Justice Center

- 
- A grayscale photograph of a young man with short hair, looking out of a window with metal bars. He is wearing a light-colored t-shirt. The image is semi-transparent, serving as a background for the text.
- Growing Population
  - Changing Standards
    - Texas Administrative Code Chapter 343, Secure Juvenile Pre-Adjudication Detention Facility Standards
    - Compliance with PREA
      - 1:8 ratio
  - Existing 43,600 gsf built in 1996
    - Deferred Maintenance
    - Out of date design

# Brazos County Juvenile Justice Center

- Existing 43,600 gsf built in 1996
- 44 bed facility
  - (4) Housing Pods, single occupancy
    - (2) 12-person housing pods
    - (2) 8-person housing pods
- Juvenile Court
- Administrative Offices
- Program and Education Areas
- Juvenile Justice Alternative Education Program (JJAEP)



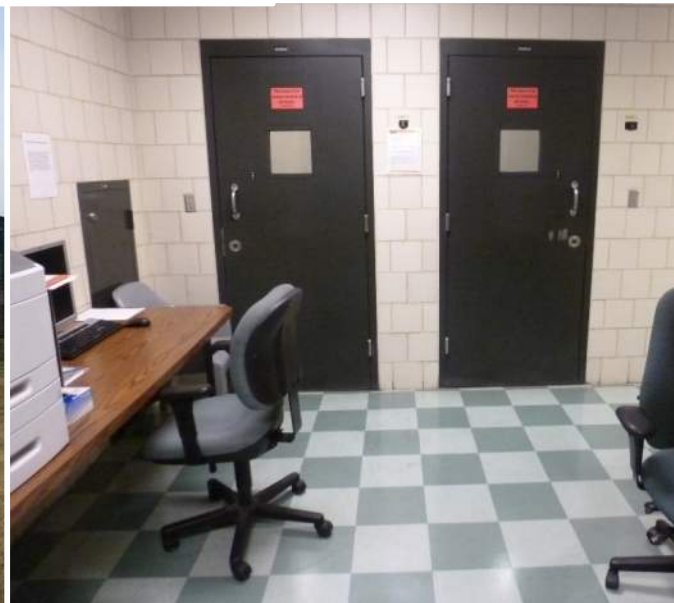
# Brazos County Juvenile Justice Center



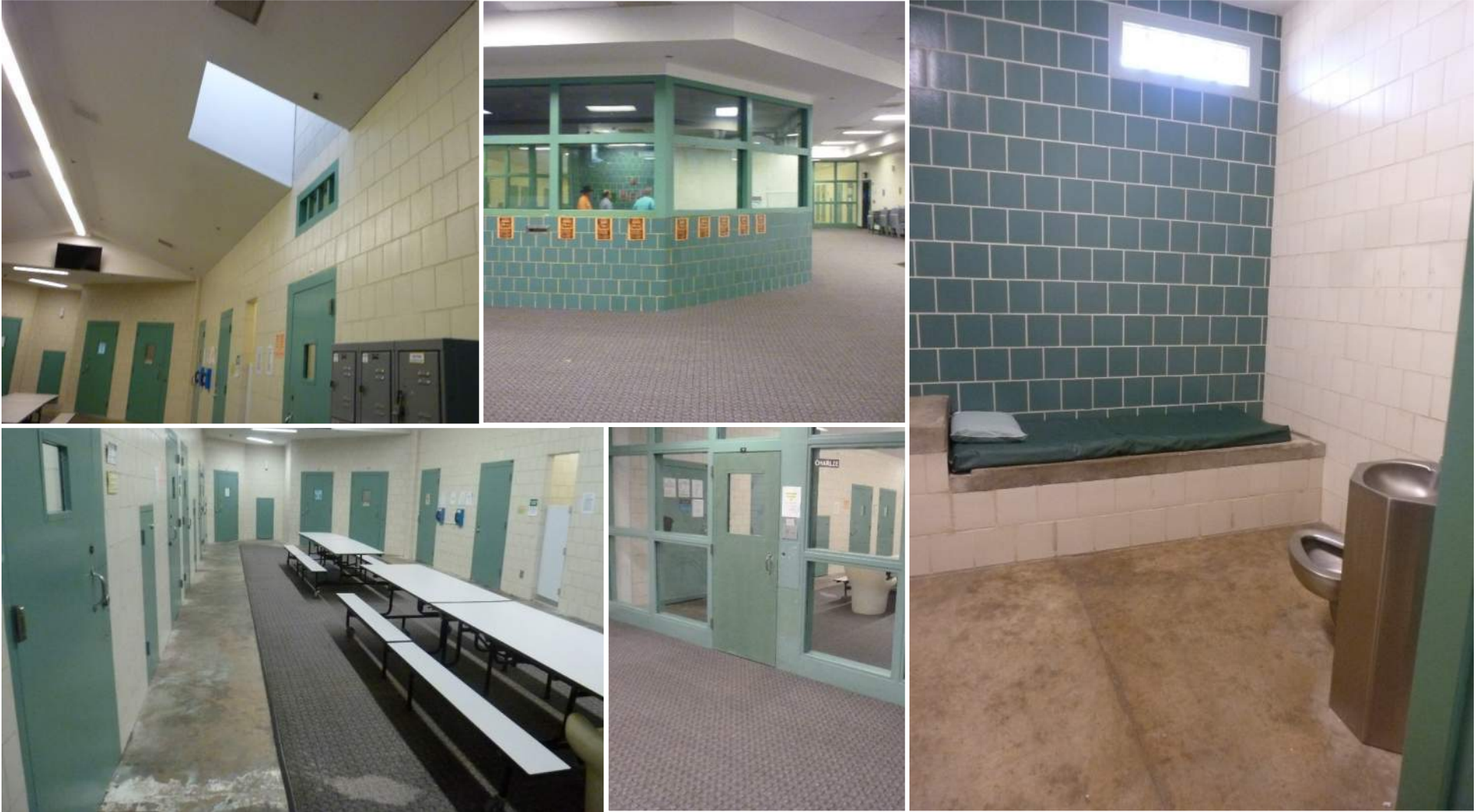
The Changing Face of Juvenile Justice



# Brazos County Juvenile Justice Center



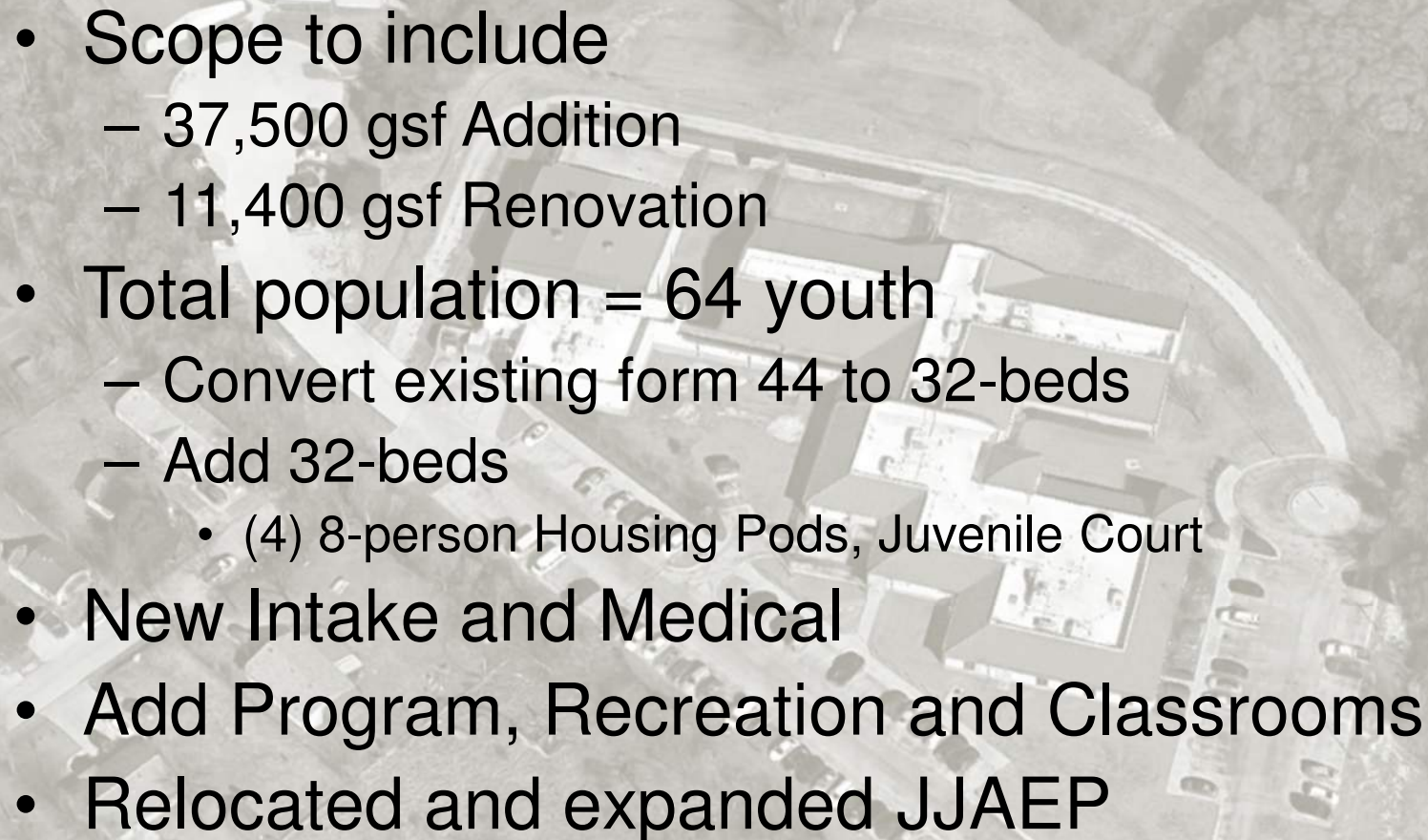
# Brazos County Juvenile Justice Center



The Changing Face of Juvenile Justice



# Brazos County Juvenile Justice Center

- 
- Scope to include
    - 37,500 gsf Addition
    - 11,400 gsf Renovation
  - Total population = 64 youth
    - Convert existing form 44 to 32-beds
    - Add 32-beds
      - (4) 8-person Housing Pods, Juvenile Court
  - New Intake and Medical
  - Add Program, Recreation and Classrooms
  - Relocated and expanded JJAEP



# Brazos County Juvenile Justice Center



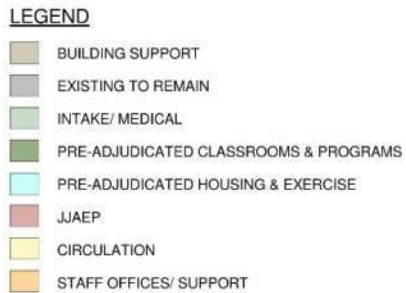
# Brazos County Juvenile Justice Center



The Changing Face of Juvenile Justice



# Brazos County Juvenile Justice Center



## The Changing Face of Juvenile Justice



# Brazos County Juvenile Justice Center



# Brazos County Juvenile Justice Center



The Changing Face of Juvenile Justice



# Brazos County Juvenile Justice Center



The Changing Face of Juvenile Justice



# Brazos County Juvenile Justice Center



The Changing Face of Juvenile Justice

# Brazos County Juvenile Justice Center



The Changing Face of Juvenile Justice



# THE CHANGING FACE OF JUVENILE JUSTICE

EVIDENCE-BASED PROGRAM AND FACILITY DESIGN HELPS COUNTIES RESPOND TO A NEW LANDSCAPE