

# Creating a Therapeutic Environment in a Secure Setting





A hand holding a white card with copyright notice text over a laptop and smartphone background.

# Copyright Notice

This presentation is protected by  
US and International Copyright  
laws. Reproduction, distribution,  
display and use of the presentation  
without written permission of the  
speaker is prohibited.

© The American Institute  
of Architects 2016





## AIA/CES Compliance Statement

“AIA Knowledge” is a Registered Provider with The American Institute of Architects Continuing Education Systems (AIA/CES). Credit(s) earned on completion of this program will be reported to AIA/CES for AIA members. Certificates of Completion for both AIA members and non-AIA members are available upon request.

This program is registered with AIA/CES for continuing professional education. As such, it does not include content that may be deemed or construed to be an approval or endorsement by the AIA of any material of construction or any method or manner of handling, using, distributing, or dealing in any material or product.

Questions related to specific materials, methods, and services will be addressed at the conclusion of this presentation.

A blurred background image showing the back of an audience seated in a conference room, looking towards a speaker who is partially visible in the distance.

## AIA/CES Reporting Details

All attendees will be eligible to receive AIA continuing education for attending this course by completing the electronic form sent via email after the conference.

»»» Continuing Education Questions can be Directed to [aaj@aia.org](mailto:aaj@aia.org)





## Course Description

The need for appropriate mental health treatment is an ever-growing concern for correctional administrators nationwide. Without dedicated housing and treatment space, mentally ill inmates end up in isolation, go without treatment and take up a majority of staff time. Additionally, limitations on space available for competency restoration places another pressure on detention facilities as pre-trial inmates await program placement. Sonoma County and its Sheriff's Office embarked on a program to re-envision the type of environment needed to promote safer and long-term treatment goals leading to better mental health care outcomes. This effort included collaboration with County behavioral health staff, architectural professionals specializing in justice facilities, correctional medical/mental health consultants, and community advocates.





# Sonoma County Adult Detention Behavioral Health Unit

SANTA ROSA, CA



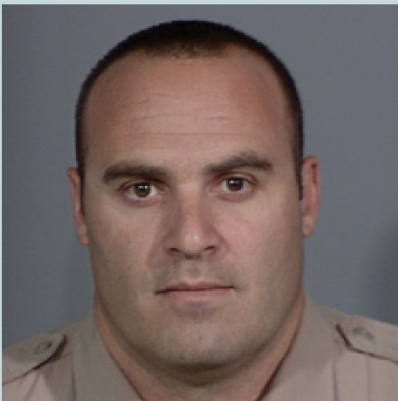
# Introductions



**LARRY BOGOVICH**  
Moderator  
Architect, PM/CM  
*Kitchell*



**BRUCE OVESON**  
Architect, Sonoma County General  
Services Department  
*Sonoma County*



**BRYAN CLEEK**  
Lieutenant  
*Sonoma County Sheriff's Office*



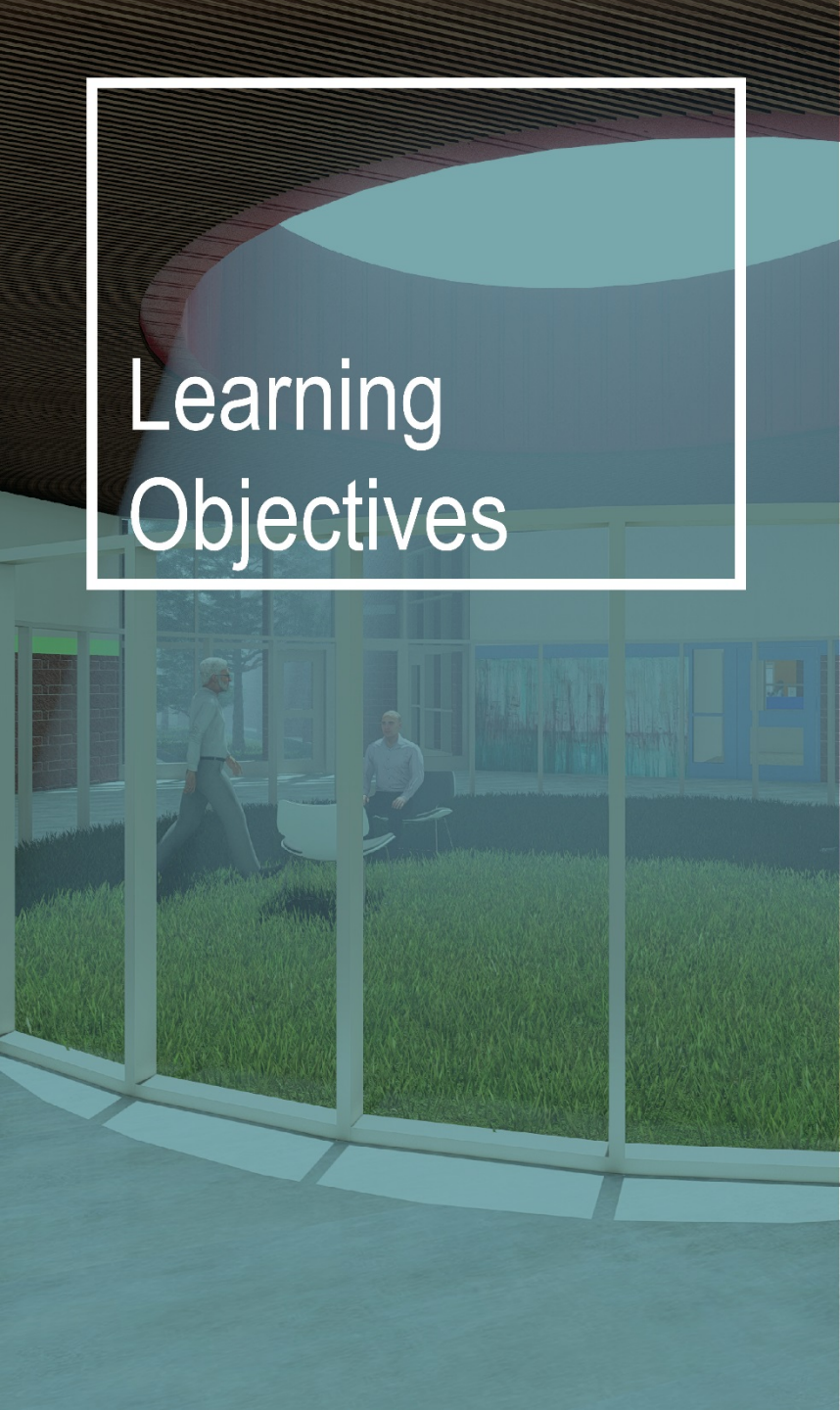
**BRENDA EPPERLY HUGGINS**  
Correctional Healthcare Specialist  
*Kitchell*



**GARY RETEL**  
Architect  
Lead Architectural Designer  
*DLR Group*



**ANNETTE CHUNG**  
Designer & Emerging Professional  
*DLR Group*



## Learning Objectives

- ❖ Recognize the various effects of an adverse environment to an inmate's mental well-being
- ❖ Understand design aspects and "best practices" for a therapeutic behavioral health unit
- ❖ Realize the importance of a therapeutic milieu and its fundamental role in restoration to competency
- ❖ Identify key activities necessary to gain the support of community groups, county agencies and staff





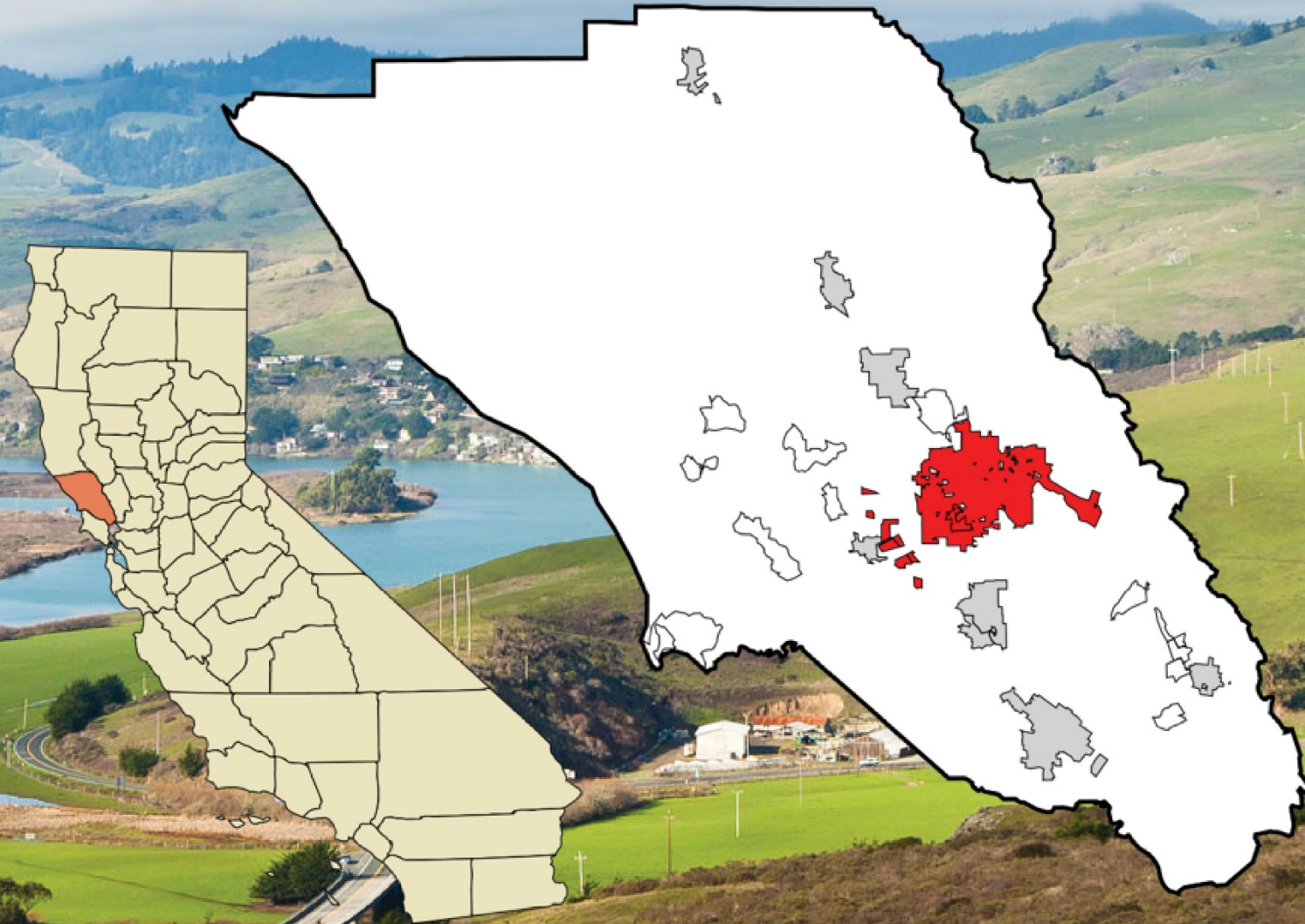
## Project Overview

- ❖ 72-Bed Facility focused on Mental Health Treatment and Return to Competency
- ❖ State Funded
- ❖ Design-Build, Stipulated Sum
- ❖ Bridging Architectural and Construction Management Services combined under a single contract
- ❖ Anticipated completion December 2019



# County of Sonoma

Santa Rosa, CA





# Project Overview

- ❖ Sheriff's Office
- ❖ County Administrator's Office
- ❖ General Services Department
- ❖ Department of Health Services
- ❖ County Counsel
- ❖ Board of Supervisors

---

**County of Sonoma**  
**Departmental Commitment**



- ❖ County of Sonoma Mental Health Board
- ❖ National Alliance of Mental Illness (NAMI) local chapter
- ❖ Community Health Initiative of Petaluma Area
- ❖ Interlink Self-Help

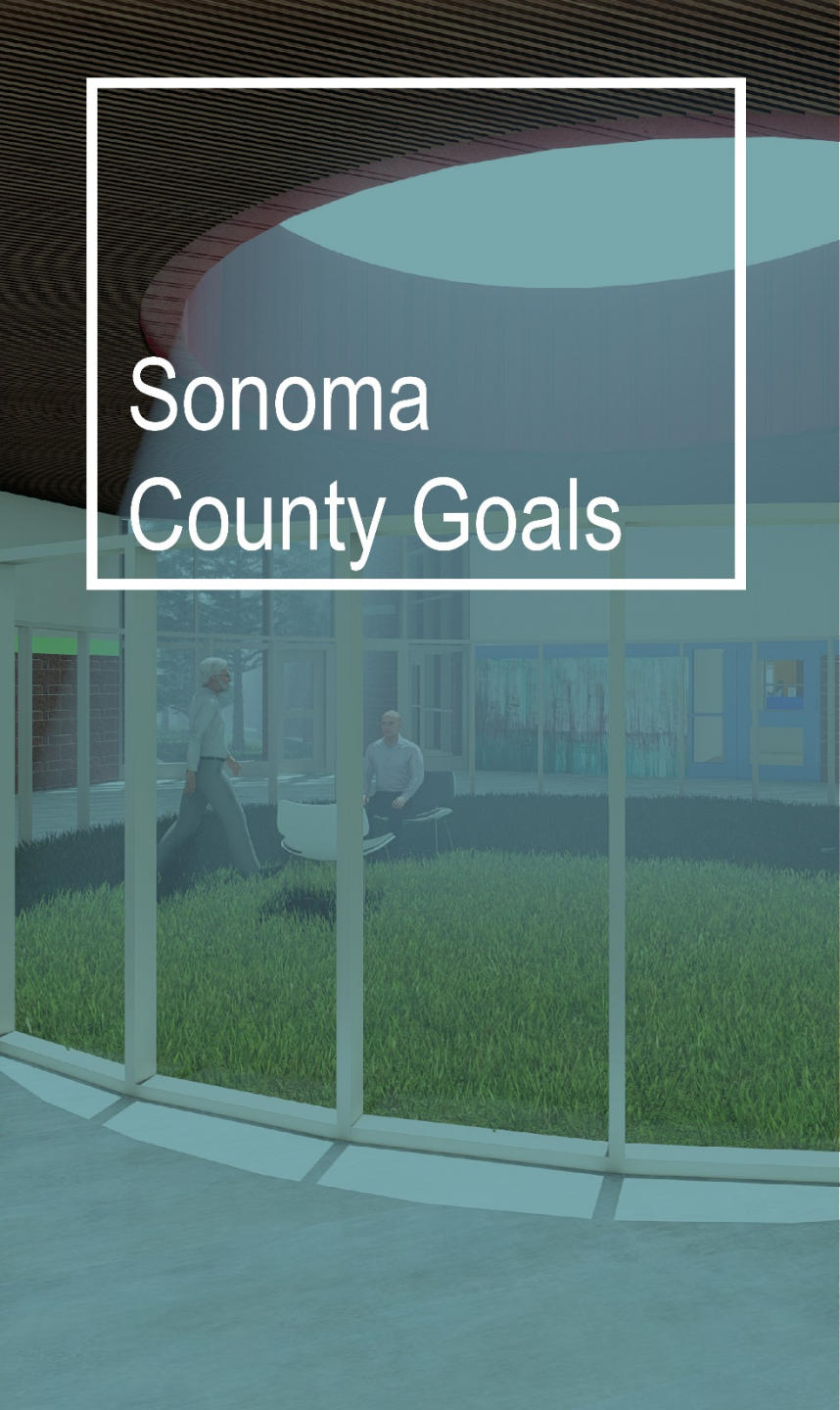


Feedback from these meetings helped inform design and program development.

## Community Outreach

Multiple meeting with local mental health organizations)





## Sonoma County Goals

- ❖ Improve behavior health services to jail inmates in a timely, cost-efficient, effective and therapeutic manner
- ❖ Provide a continuum of care from jail services to community health services
- ❖ Reduce recidivism
- ❖ Gain support and buy-in
- ❖ Address criticism from outside advocacy groups (i.e. Disability Rights California (DRC), Prison Law Office)

# Facility Design



Research & Evidence  
Based Practices Driven  
Design



- ❖ Compact- Simplified Circulation
- ❖ Organized Around Secure Internal Courtyard
- ❖ Residential Scaled- Single Level
- ❖ Inward Focused Views to Non-Inmate Landscaped Areas

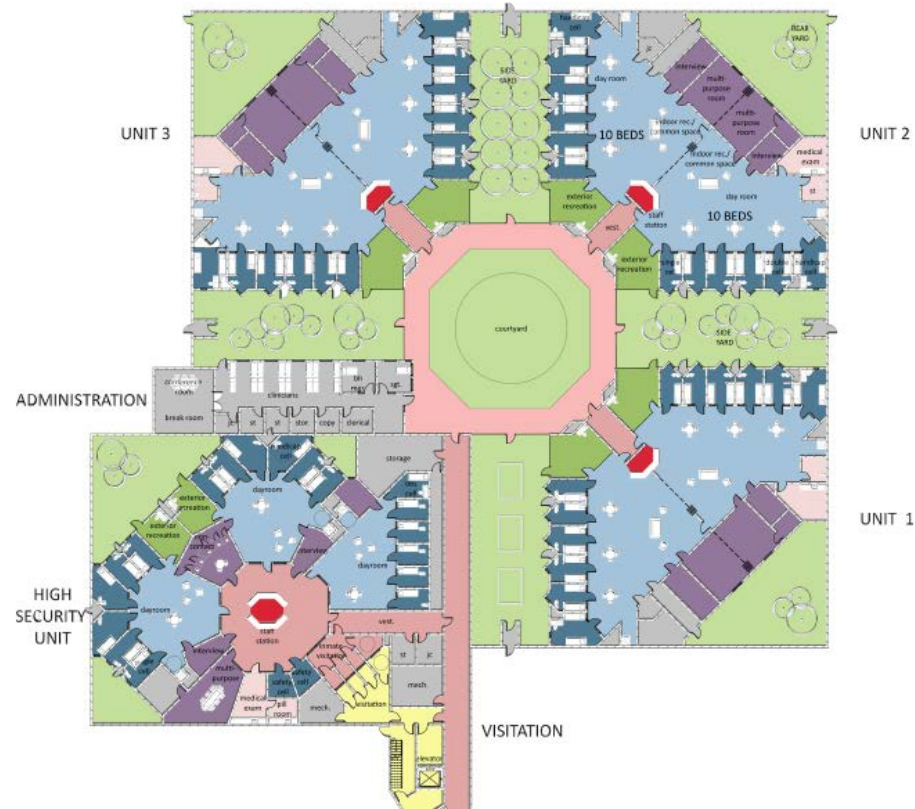


# The Facility Outcome...



## Reducing the Effects of an Adverse Environment

*Offer a safe, secure, therapeutic, quiet environment*



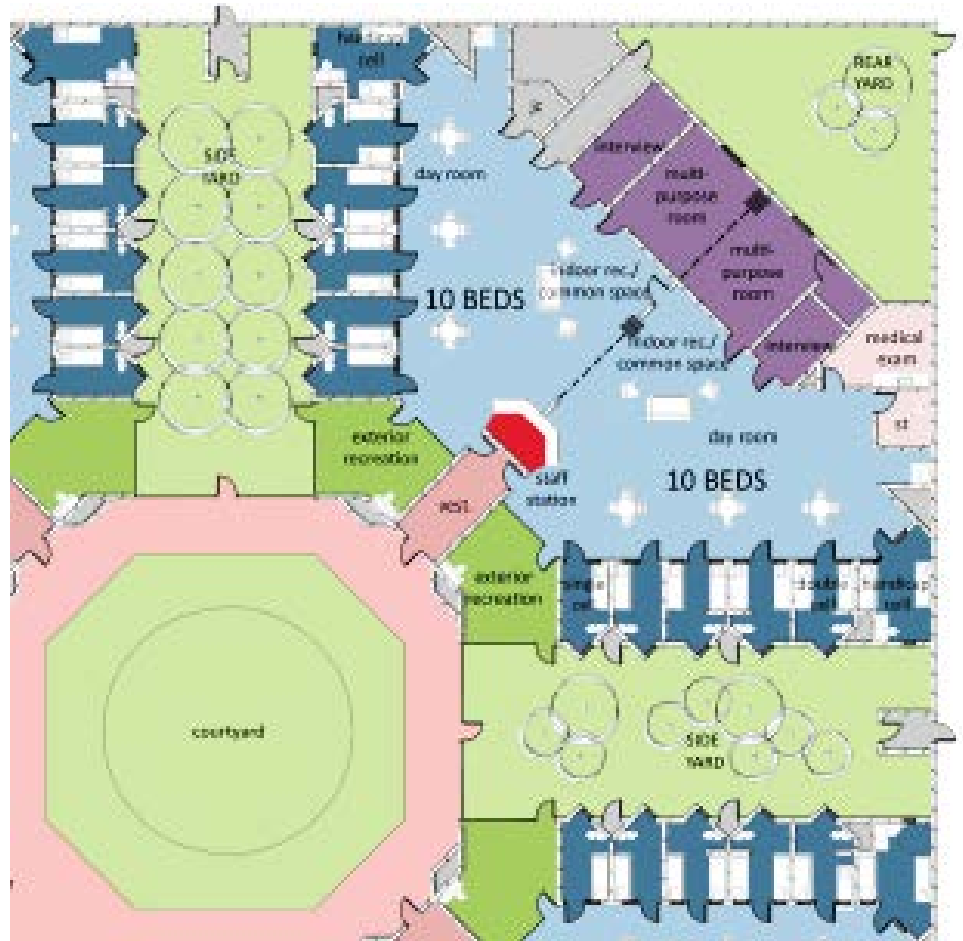
- ❖ Lots of visibility
- ❖ Views to nature
- ❖ Use of color
- ❖ Reduce noise
- ❖ Natural light

# The Facility Outcome...



Providing a  
Therapeutic Milieu

## *Multiple Housing Options for “least restrictive” settings*



- ❖ 20 bed housing unit
- ❖ 10 bed unit
- ❖ High security unit
- ❖ Male or Female Units
- ❖ Restoration to competency training unit
- ❖ Step-down care from high security to supportive care



# The Facility Outcome...



High-security  
Therapeutic  
Environment



- ❖ Quiet rooms are located in an area with less traffic
- ❖ Small dayrooms
- ❖ Non-contact interview rooms
- ❖ Secure but not isolated



# The Facility Outcome...



Using Best Practices



- ❖ Maximum visibility
- ❖ Multiple treatment rooms
- ❖ Dividable dayrooms
- ❖ Workstations near units
- ❖ Out of cell and outdoor access
- ❖ Views to nature
- ❖ Integrated spaces and services
- ❖ Group spaces



# The Facility Outcome...



The Sonoma County  
Adult Detention  
Behavioral Health  
Unit



- ❖ Reduce the effects of adverse environment
- ❖ Provide a therapeutic milieu
- ❖ Utilize best practice in healthcare design



An architectural rendering of a modern building interior. The scene features a large, circular skylight in the ceiling, casting light into a space with a dark, textured ceiling. Below the skylight is a glass-walled courtyard or atrium. The courtyard has a light-colored floor and is surrounded by a low wall. In the background, there is a large mural on the wall and a glass door. The overall design is clean and modern, with a focus on natural light and open space.

## The DRC Design Review

“The bridging architectural team, in conjunction with the Sheriff’s Office, CAO, Department of Health Services and General Services, has made significant progress toward designing an efficient and innovative facility with a progressive program of care.”



# The Power of Collaboration



- ❖ Compact, simplified circulation
- ❖ Organized around secure internal courtyard
- ❖ Residential scaled, single level
- ❖ Inward focused, views to non-inmate landscaped areas
- ❖ Urban jail, no views into or out of facility

The Sonoma County Adult Detention Behavioral Health Unit >>>>