

Bridgepoint Active Healthcare

Toronto, Ontario, Canada



SQ FT
680,000 BGSF



OWNER/AFFILIATION
Bridgepoint Health



ARCHITECT(S)
Stantec Architecture/
KPMB Architects/ HDR
Architecture/Diamond
Schmitt Architects



COMPLETION DATE
June 2013



SECTION THROUGH RENOVATED 148-YEAR-OLD DON JAIL



FACADE DETAIL



RENOVATED DON JAIL



SITE MAP

ABOUT | DESIGN INTENTIONS

Bridgepoint Active Healthcare is Canada's leader in complex care and rehabilitation. **The 10-story, 472-bed hospital is the largest healthcare facility of its kind in Canada** and the only organization dedicated to people living with complex chronic disease and disability.

Using space already available, the adjacent 148-year-old Don Jail was readapted into the hospital's administrative and education center. The restoration is emblematic of **Bridgepoint's commitment to transformative rehabilitation**—giving new life to an important Toronto landmark.



NORTH ELEVATION



SOUTH ENTRANCE

Bridgepoint Active Healthcare

Toronto, Ontario, Canada

DESIGN CHALLENGES

Bridging To The Past

The architectural solution **prioritizes de-institutionalization with spaces for socialization** and spaces with direct access to the healing benefits of nature. A series of focal points were developed to promote the goals of wellness: **a civic piazza, therapeutic gardens, a communal urban ‘porch’, green terraces and roof gardens, a therapy pool, and a meditative labyrinth.**

The design evolved in parallel to North America’s largest post-occupancy study to assess the impact of design on health and well-being. Many design elements incorporated into Bridgepoint have been proven to provide enhanced healing outcomes.

One of the **main challenges** was to transform the **dark history of the strong neoclassical architecture of the Don Jail** from a penal institution into the administrative offices for this health center. This was achieved with a **complete interior transformation** including a bridge connection to the new hospital’s clinical components. The design dramatically alters a **site stigmatized by a history of isolation** and penal reform, turning it into a **connected campus of wellness.**



DESIGN CHALLENGES

Connections

Bridgepoint Active Healthcare is designed to **maximize connections between this chronic care hospital and its community**, the city and with surrounding nature to **optimize a positive healing environment.**

The Bridgepoint Hospital occupies the northwest corner of a nine square grid Campus of Wellness for which the hospital administration (formerly the Don Jail) occupies the central square. New parks, a main entrance from Broadview Avenue and future development sites complete the plan.

The former Don Jail (1864) has been **restored and re-purposed as the hospital’s administrative building.** A variety of jail cells, the gallows and the soaring rotunda have been preserved and are on view to the public for the first time. Heritage interpretative plaques throughout the building make connections between the hospital, rehabilitation, penal reform and the community.

The administrative building is connected to the main floor of the hospital by a pedestrian bridge.



Bridgepoint Active Healthcare

Toronto, Ontario, Canada

Urban Porch

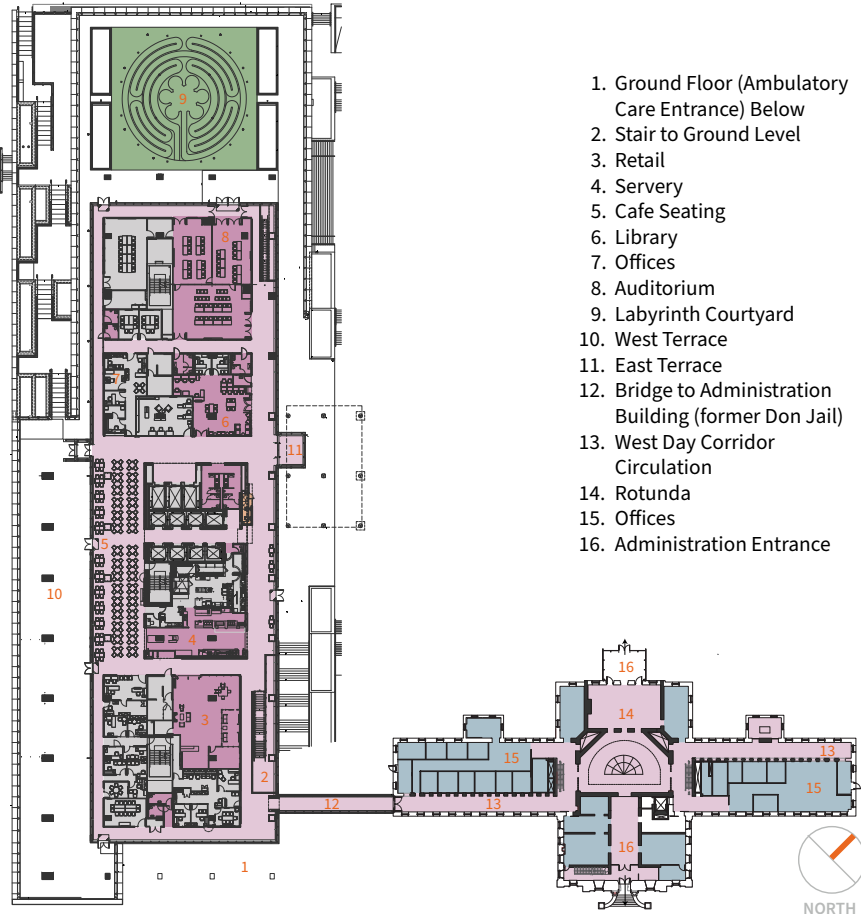
Bridgepoint's Main Floor plan is conceived as a **large, public accessible 'Urban Porch'** which allows patients to **participate in community life** and **invites the community to engage** with Bridgepoint patients and visitors. An abundance of **natural light** and **clear wayfinding** is **supported by a calm color palette** and finishes, such as wood ceilings, both indoors and on terraces.

Social Spaces

Socialization is an important part of therapy, and the building offers many gathering spaces for patients, staff and the community. This abundance of natural light improves orientation and way-finding and is supported by a calm color palette and finishes, such as wood ceilings, both indoors and on terraces, to put patients at ease. There are quiet spaces for rest and therapy, including a large ground floor terrace adjacent to a café, which is accessible to the community, a green roof top terrace, and a wheelchair-accessible meditative labyrinth patterned on the one at Chartres Cathedral in France.

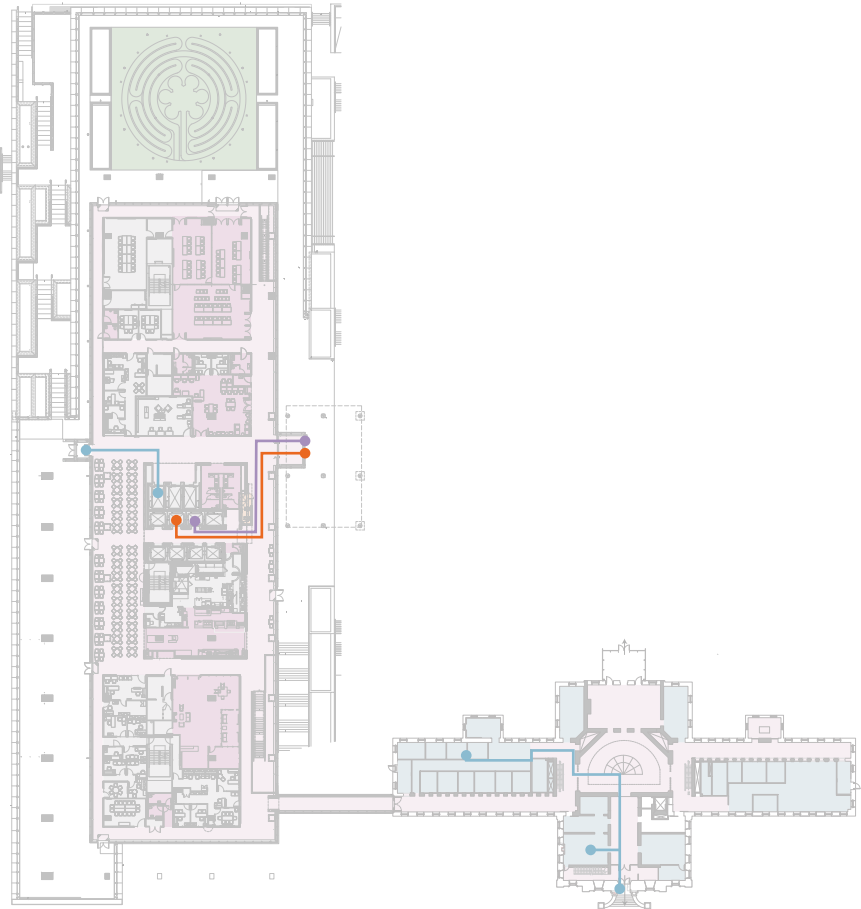
KEY SPACE :		
Renovation		8,659 SF
Outdoor Area		339,426 SF
Shared Activity		10,626 SF
Registration/ Waiting		131 SF
Support		15,346 SF

GROUND LEVEL:



Note: "Departmental Square footages take-off based on 'Analysis of Departmental Area in Contemporary Hospitals calculation methodologies & Design Factors Report, 2014

TRAVEL DISTANCE ANALYSIS



KEY SPACES:

- ▶ Retail (2,348sf)
- ▶ Servery (1,641sf)
- ▶ Cafe Seating (4,102sf)
- ▶ Library (1,926sf)
- ▶ Office (117sf)
- ▶ Auditorium (3,752sf)
- ▶ Labyrinth Courtyard (8,141sf)
- ▶ West Terrace (331,285sf)

*NEW - GROSS SQUARE FOOT TAKE-OFFS

	Net	Gross
Registration/Waiting	640 SF	620 SF
Staff Work Area	24,005 SF	24,005 SF
Public	20,582 SF	20,582 SF

RENOVATION - GROSS SQUARE FOOT TAKE-OFFS

	Net	Gross
Staff Work Area	6,440 SF	6,846 SF
Public	7,450 SF	7,563 SF

TRAVEL DISTANCE ANALYSIS

- Patient 20ft - 84ft
- Family 23ft - 123ft
- Staff 27ft - 406ft

Bridgepoint Active Healthcare

Toronto, Ontario, Canada

RECOVERY AND WELLNESS

An abundance of **natural light** and **clear wayfinding** is **supported by a calm color palette** and finishes, such as wood ceilings, both indoors and on terraces.

Bridgepoint's Main Floor plan is conceived as a **large, public accessible 'Urban Porch'** which allows patients to **participate in community life** and **invites the community to engage** with Bridgepoint patients and visitors.

KEY SPACE :

<div></div> Patient Rooms	12,403 SF
<div></div> Nurse Stations	1,888 SF
<div></div> Continuing Care Program	3,989 SF
<div></div> Shared Activity	1,122 SF
<div></div> Patient Lounge	538 SF
<div></div> Support	2,944 SF

TYPICAL PATIENT FLOOR (Level 1-4, 6-9)



1. Nurse Stations
2. Therapy Gym
3. Complex Continuing Care Core Program
4. Shared Dining and Activity Room
5. Patient Lounge



Note: “Departmental Square footages take-off based on ‘Analysis of Departmental Area in Contemporary Hospitals calculation methodologies & Design Factors Report, 2014

TRAVEL DISTANCE ANALYSIS



Sources: <https://www.hdrinc.com/portfolio/bridgepoint-active-healthcare>

TYPICAL PATIENT FLOOR PLAN

Neighborhoods

To mitigate the **scale** of this facility, a vertical campus concept was conceived to create **a community of stacked neighborhoods of patient units**. Each floor is clearly ordered and organized into **two neighborhoods of 32 beds each** configured with single and double-bed patient rooms. Because the patients at Bridgepoint are not acute, **double-bed rooms are actually preferred as they help with socialization**—an important part of therapy. **Shared therapy space is centralized on each floor at the cores** with common spaces to the north and south. **Nursing stations are in close proximity to their respective neighborhoods of care.**

KEY SPACES:

- ▶ Patient Room (253sf)
- ▶ Therapy Gym (1,653sf)
- ▶ Patient Lounge (1,100sf)
- ▶ Complex Continuing Care Core Program (3,989sf)

FLOOR GROSS SQUARE FOOT

TAKE-OFFS	Net	Gross
Patient Care	10,296 SF	12,403 SF
Dining and Activity	3,141 SF	3,287 SF

TRAVEL DISTANCE ANALYSIS

- Patient 36ft - 112ft
- Family 36ft - 112ft
- Staff 36ft - 210ft

Bridgepoint Active Healthcare

Toronto, Ontario, Canada

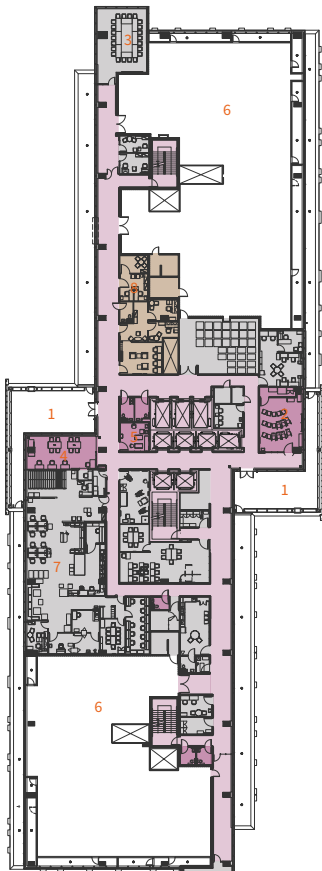
DESIGN STRATEGIES

- ▶ **Visitor-friendly features**, such as glass walls, food concessions, retail outlets, learning centers, an auditorium, and **an outdoor terrace with steps to parkland draw the community to the building.**
- ▶ **Communal patient dining rooms, an Internet café, a spiritual room, a rooftop garden**, therapy and rehabilitation rooms, outside terraces and a labyrinth are all designed to get patients out of their rooms and motivated to manage their illnesses.
- ▶ From the patient rooms, **patients can peer into the outside world through narrow floor-to-ceiling “pop-out” windows**—a key exterior design element—interspersed with horizontal windows.
- ▶ In keeping with **salutogenic principles that seek to address individuals’ psychosocial well-being, architectural details, textures, and finishes were chosen to signify comfort and community**, counteracting the feeling of being in an institution.

KEY SPACE :

Continuing Care Program	1,910 SF
Shared Activity	2,248 SF
Support	6,094 SF

FIFTH LEVEL:

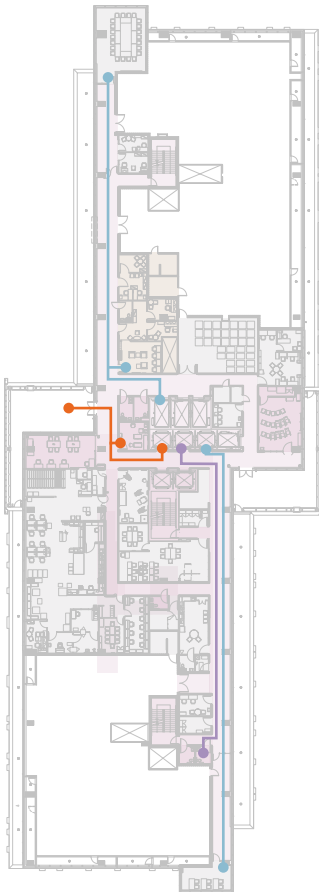


1. Terrace
2. Quite Room/ Spiritual Care
3. Meeting Room
4. Internet Cafe
5. Hair Salon
6. Mechanical/Electrical
7. In-house Pharmacy
8. Complex Continuing Care Core Program



Note: “Departmental Square footages take-off based on ‘Analysis of Departmental Area in Contemporary Hospitals calculation methodologies & Design Factors Report, 2014

TRAVEL DISTANCE ANALYSIS



KEY ENCLOSED SPACES:

- ▶ Quiet Room/ Spiritual Care (819sf)
- ▶ Meeting Room (975sf)
- ▶ Internet Cafe (739sf)
- ▶ Hair Salon (254 sf)

KEY OUTDOOR SPACES:

- ▶ Terraces (2,300sf)
- ▶ Mechanical/ Electrical (21,688 sf)

FLOOR GROSS SQUARE FOOT TAKE-OFFS

	Net	Gross
Staff Work Area	7,089SF	8,004 SF
Semi-Public Services	2,230 SF	2,248 SF

TRAVEL DISTANCE ANALYSIS

- Patient 33ft - 95ft
- Family 54ft - 190ft
- Staff 50ft - 203ft

Bridgepoint Active Healthcare

Toronto, Ontario, Canada

DESIGN STRATEGIES

Roof Garden + Therapy Space

A therapeutic green roof on the 10th Floor features a large, accessible terrace with access to a greenhouse and extends the therapeutic benefits of nature vertically throughout the building section. From this vantage point, patients and family members can enjoy expansive views of the surrounding community, Lake Ontario and Toronto's downtown core to the west. Commanding views in almost every direction over the city remind patients of the ultimate goal of their stay: returning to their home and a new normal life.

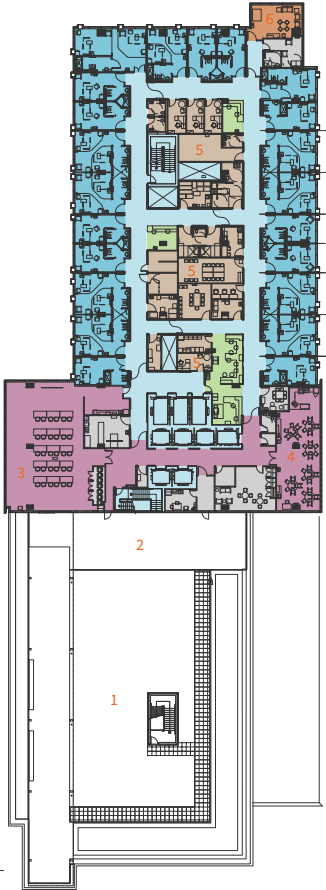
Outdoor Spaces

- ▶ Rooftop Terrace - 10th Floor
- ▶ 5th Floor terraces - 5th Floor
- ▶ Tanenbaum Sculpture Garden - Main Floor
- ▶ Labyrinth Terrace - Main Floor

KEY SPACE :

Patient Rooms	8,725 SF
Nurse Stations	930 SF
Continuing Care Program	3,431 SF
Shared Activity	3,678 SF
Patient Lounge	370 SF
Support	1,698 SF

TENTH LEVEL:

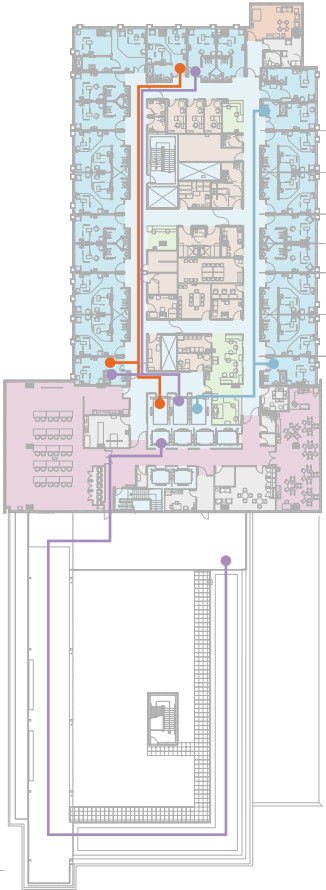


1. Green Roof
2. Roof Terrace
3. Auditorium
4. Shared Dining
5. Complex Continuing Care Core Program
6. Patient Lounge



Note: "Departmental Square footages take-off based on 'Analysis of Departmental Area in Contemporary Hospitals calculation methodologies & Design Factors Report, 2014

TRAVEL DISTANCE ANALYSIS



KEY ENCLOSED SPACES:

- ▶ Patient Room (362sf)
- ▶ Shared Dining (1,092sf)
- ▶ Patient Lounge (370sf)
- ▶ Complex Continuing Care Core Program (3,431sf)

KEY OUTDOOR SPACES:

- ▶ Green Roof (2,618 sf)
- ▶ Roof Terrace (6,000 sf)

FLOOR GROSS SQUARE FOOT TAKE-OFFS

	Net	Gross
Patient Care	6293 SF	8725 SF
Staff Work Area	4978 SF	5028 SF
Semi-Public Services	3643 SF	3678 SF

TRAVEL DISTANCE ANALYSIS

- Patient 62ft - 183ft
- Family 62ft - 250ft
- Staff 91ft - 185ft

Sources: <https://www.hdrinc.com/portfolio/bridgepoint-active-healthcare>

Bridgepoint Active Healthcare

Toronto, Ontario, Canada

PATIENT ROOM

Fenestration

At Bridgepoint Active Healthcare, **there are 472 vertical windows—one for each patient.** Hospital rooms were designed to give every patient—sitting or supine—an unobstructed view, horizontally and vertically. **The design strategy was focused on enhancing the connection between patients and their community,** the surrounding nature and the urban environment. It also included features that increase social interactions, inspiring physical activity to facilitate healing.

Patients Experience

The hospital rooms were designed with patients in mind. **Every patient has a floor-to-ceiling view of the city or park, generous room sizes, and a closet with a lockable drawer for valuables.**

A patient’s need for family presence and support does not end at a specific time of day. Visitors are welcome 24-hours a-day. The hours of 10 p.m. to 7 a.m. are the designated Quiet Hours. **Each patient can designate one to two people as their family caregivers. Family caregivers will receive a identification (ID) badge and may remain on the unit with the patient during Quiet Hours**



PATIENT ROOM



PATIENT ROOM



GREEN ROOF TERRACE



GREEN ROOF WALING PATH



GREEN ROOF TERRACE

Bridgepoint Active Healthcare

Toronto, Ontario, Canada

DESIGN PROCESS

Distinct Facade

Bridgepoint's distinctive building envelope contains a fenestration pattern of projecting 'pop-out' vertical windows interspersed with the predominant horizontal fenestration as counterpoint. The placement of vertical windows, with their complex patterns and rhythms, play across the facade of the building in the same number - 472 - as there are patients. This makes for individual connection for patients and their caregivers as well as creates a distinct identity for the hospital.

PROJECT SUMMARY:

Project: Bridgepoint Active Healthcare
Project location: Toronto, Ontario, Canada
Owner/Client: Bridgepoint Health
Architect: Diamond Schmitt Architects
Architects:
Planning, Design and Compliance: Stantec & KPMB
Design, Build, Finance & Maintain: HDR & Diamond Schmitt Architects
Photographs/Illustrations: Tom Arban, Nic Lehoux, Sam Javanrouh
Building area GSF: 680,000 SF
LEED Certified: Silver
Substantial completion date: June 2015



EXTERIOR FENESTRATION AT NIGHT

AIA/AAH DESIGN AWARD WINNER

Category B: Built (more than \$25 million construction cost)

JURY COMMENT

"This building optimizes its expansive views and an abundance of natural light to create an uplifting and restorative environment for patients and staff. **The plan is clearly laid out**, with strategically placed lounges and common spaces. The exterior is well articulated with projecting fenestration which also serves to break down the scale of the building. **The roof top public garden and seating area is a great amenity for patients and staff which completes the facility's strong connection to its natural setting.** By renovating the site's former jail into administrative offices, the design connects the facility to the history of the site and enriches the entire complex."



AERIAL VIEW OF CAMPUS



FIFTH FLOOR PUBLIC LEVEL



LABYRINTH