

Big Cities | Big Ideas

New York City



BIG CITIES
BIG IDEAS
NYC 2014 LON



THE AMERICAN INSTITUTE
OF ARCHITECTS
Committee on Design

Big Cities | Big Ideas

New York

2014 AIA Committee on Design Spring Conference
May 15 - 18, 2014 | New York, New York

The AIA Committee on Design would like to acknowledge the following sponsors for their generous support of the 2014 AIA Committee on Design Spring Conference.



PATRON SPONSORS

Milliken Carpets
Shawmut Design and Construction

ARCHITECTURE OFFICE RECEPTION SPONSORS

Cooper Joseph Studio
LEVENBETTS
Richard Meier & Partners Architects LLP
Pei Cobb Freed & Partners Architects LLP
Ronnelle Riley Architect
SAMOO Architecture PC
Snøhetta
Robert A.M. Stern Architects LLP

AIA Committee on Design

The American Institute of Architects Committee on Design (COD) was founded to promote design excellence among members of the AIA, the broader design community, and the public at large, both nationally and internationally. It is one of the oldest AIA committees, established in 1963. This year we celebrate the 50th anniversary of the COD! The COD is led by a volunteer advisory group of eight architects and an adjunct leadership team of eight subcommittee chairs. In realizing our mission, we promote a range of activities intended to encourage a dialogue on the art of building. Our goals are to:

- examine and promote knowledge of contemporary design issues
- compare current design and historic precedents
- learn from the progression of ideas
- advocate leadership roles for architects within the fields of design and planning

2014 NATIONAL ADVISORY GROUP

STEVE ALSAUGH AIA, CHAIR
JAMES CHILDRESS FAIA, CHAIR-ELECT
KEVIN WILCOCK AIA, SECRETARY
WILLIAM CONNOLLY, TREASURER
MARLENE IMIRZIAN FAIA, PAST CHAIR

2014 NATIONAL COMMITTEE CHAIRS

ANN THOMPSON MLS, COMMUNICATIONS COMMITTEE CHAIR
ANDY KING, AIA, MEMBER SLIDE SHOW CHAIR
PHILIP HAMP FAIA, HONORS AND AWARDS RECEPTION CHAIR | CHICAGO
ANN THOMPSON MLS, WEBSITE CHAIR
PHILIP LAIRD FAIA, CORPORATE SPONSORSHIP CHAIR
JAMES C LORD II AIA, HONORS AND AWARDS CHAIR
DOUG BENSON AIA AND TAKASHI YANAI AIA, GOLD MEDAL COMMITTEE CO-CHAIRS
PAUL MANKINS FAIA AND TANIA SALGADO AIA, FIRM AWARD COMMITTEE CO-CHAIRS
JOHN SNYDER AIA, TWENTY-FIVE YEAR AWARD COMMITTEE CHAIR
ROBERT MILLER FAIA, INSTITUTE HONORS FOR COLLABORATIVE ACHIEVEMENT
COMMITTEE CHAIR
DONALD HENKE AIA, HONORARY FELLOWSHIP COMMITTEE CHAIR
SUSAN PARRISH, NATIONAL AIA STAFF COORDINATOR FOR COD

2014 SPRING CONFERENCE COMMITTEE

STEVE ALSAUGH, AIA, AIA COD CHAIR
LYN RICE AIA & ASTRID LIPKA, AIA, AIA COD
SPRING CONFERENCE CO-CHAIRS
CAROLYN HINGER, AIA
NATALIE REBUCK, AIA
PHILIP SMITH, AIA
DOUGLAS THOMPSON, AIA
ANN THOMPSON, MLS, CONFERENCE
COMMUNICATIONS
ROBERT TILL, CONFERENCE GUIDE

THANK YOU

RICK BELL, FAIA
CAROL BENTEL, FAIA
LANCE JAY BROWN, FAIA
ANTHONY COSTELLO, FAIA
ROSALIE GENEVRO, HON AIANY
FRANCES HALSBAND, FAIA
WENDY EVANS JOSEPH, FAIA
RONNETTE RILEY, FAIA
WERNER SCHMIDT
LYNN RASIC
SANDRA BLOODWORTH
FRIENDS OF THE HIGHLINE

THANK YOU TO OUR OFFICE RECEPTION HOSTS

COOPER JOSEPH STUDIO
LEVENBETTS
RICHARD MEIER & PARTNERS ARCHITECTS
PEI COBB FREED & PARTNERS ARCHITECTS LLP
RONNETTE RILEY ARCHITECT
SAMOO ARCHITECTURE PC
SMITH AND THOMPSON ARCHITECTS
SNØHETTA
ROBERT A.M. STERN ARCHITECTS

Table of Contents

	SEGMENT SCHEDULES & TOUR SITES	ATTRACTIONS & DINING RECCOMENDATIONS	POST CONFERENCE CONTENT
Letter from Steve Alsbaugh, AIA2	Schedule-at-a-Glance....23	Other Attractions 91	
Letter from Lyn Rice, AIA & Astrid Lipka, AIA3	Thursday.....25	Restaurants..... 94	
Conference Speaker Bios 4	Friday31		
	Office Receptions.....57		
	Saturday63		
	Sunday Add-On83		

Message from the Committee on Design 2014 National Chair



Steve Alspaugh, AIA
Schmidt Associates
2014 AIA Committee
on Design Chair

Dear COD Members,

It is my sincere honor to serve as the Chair of the AIA Committee on Design for 2014. Having celebrated our 50th Anniversary in 2013, we look forward advancing our connections with each of you and bringing you opportunities to explore significant new design responses to the challenges in our rapidly changing world.

It is a COD tradition to establish a thematic focus around the conferences for a given year. In 2014, our theme of Big Cities | Big Ideas will lead us on explorations of new work in New York City and London. The “big idea” is a consistent thread of design excellence. It embraces bold and often ground-breaking design thinking and inspirations, a different way of envisioning design possibilities to advance the development of our built environment, but always on the foundation of previous work and informed by the big ideas of others. Bold, big ideas are the backbone of outstanding projects of all sizes. Nowhere is this more relevant in the world today than in our cities.

New York and London are two of the most influential cities in the world. We will explore the new work in these two mega-cities that makes them international destinations for culture, tourism, and business. Inside the history of these two iconic cities are lessons that can guide the rapidly growing cities of today.

New York is teeming with new work of many types, but one thing they have in common is their ability to profoundly impact the quality of urban life in the areas of the city they occupy and the surrounding neighborhoods. Many of these projects were well underway when the damage and after-effects of Hurricane Sandy brought a renewed attention to proposed waterfront development and long-term strategies for dealing with the potential for rising water levels in the future.

In returning to host a conference in New York for the first time in over thirty years, we will focus on a variety of projects and building types in several areas of Manhattan that have recently or will soon be experiencing major new project construction.

We anticipate filming this year's installment of The Design Legacy Video Series at the Spring Conference, with design leaders from New York City discussing the big ideas currently developing in the city.

We are pleased that you are engaged with the work of the Committee on Design and the opportunities to experience the benefits of participation in this important conference. I look forward to seeing you in New York.

Message from the Committee on Design 2014 Spring Conference Co-Chairs



Lyn Rice, AIA
2014 AIA COD Spring
Conference Co-Chair



Astrid Lipka, AIA
2014 AIA COD Spring
Conference Co-Chair

The last time the COD visited New York City in 1993, Jenny Holzer was taking over the abandoned porn theater facades abundant along 42nd Street with her installation “Marquees,” the World Trade Center had just been truck-bombed, and Mosaic, the browser that began the internet boom launched. It was a cultural turning point for the City – a moment after which much of its grime and, many argue its grit, began to be erased.

Just four months after 9/11, Michael Bloomberg started the first of three terms as mayor. The administration initiated planning/zoning changes that accelerated development of our amazing waterfront, focused attention on design excellence for city-funded projects, and sponsored quality of life campaigns, including the transformation of city streets into public plazas (like the now permanent conversion of five blocks at Times Square by Snøhetta), and active design projects, including the addition of 500 miles of new bike lanes.

The COD returns to New York at a moment when much of the planning of the last decade is culminating in built works that will further transform the city. These initiatives are not without controversy, and involve issues associated with rising sea levels and storm surges, affordable housing, gentrification, urban density, neighborhood character and preservation, and with our new mayor, the equitable distribution of public funds across the five boroughs. This diverse mix of complex issues, their passionate debate, and

their ongoing resolution keep the city in flux, shaping its distinctive character and fueling its vitality.

In the first few hours of the Conference, we will see firsthand in visits to the World Trade Center and the High Line, how the productive tensions of urban building, the struggles with infrastructure and density, the valuation of old and new result in uniquely New York experiences ranging from the chaotic to the sublime.

In a city known for its street-smarts, we will also see the book-smart side of New York in our Columbia Segment which covers the upper third of Manhattan and includes visits to academic projects designed by Holl, Marble Fairbanks, Moneo, Weiss Manfredi and sites being planned by Diller Scofidio + Renfro, Piano, and SOM. And we will explore two of New York's biggest ideas (Moses-era mega-projects), Lincoln Center and the UN Headquarters and the subtle, surgical interventions that have recently reinvigorated these facilities.

We look forward with you, to hearing about these projects from their architects on site, and learning about the issues and opportunities facing our cities with presentations by the city's leading thinkers, planners, and architects. We anticipate an intense, rewarding conference and we look forward to seeing you here in New York!



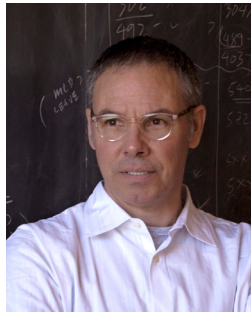
Michael Adlerstein

The United Nations

Michael Adlerstein has been appointed by UN Secretary-General Ban Ki-moon as the Assistant Secretary-General and Executive Director of the Capital Master Plan in 2007. The CMP is a \$2 billion project to renovate the UN Headquarters in New York.

Before this assignment, Mr. Adlerstein was the Project Director for the restoration of Ellis Island and the Statue of Liberty, the most ambitious historic restoration project ever undertaken by the US Department of the Interior. He became the Chief Historical Architect of the National Park Service, before serving as the Vice President of The New York Botanical Garden.

Mr. Adlerstein, a New York native, with an architectural degree from Rensselaer Polytechnic Institute, was a Loeb Fellow at Harvard University's Graduate School of Design. He was a Peace Corps Volunteer in Colombia, and has worked as a State Department consultant on preservation and planning projects including the preservation of the Taj Mahal. He is the Special Representative of the Secretary-General on the Board of Trustees to the UN International School, and in 1994 was made a Fellow of the AIA.



Stan Allen, FAIA

Stan Allen Architect
George Dutton '27 Professor of
Architecture at Princeton University

Stan Allen is an architect working in New York and George Dutton '27 Professor of Architecture at Princeton University. From 2002 to 2012 he was Dean of the School of Architecture at Princeton. He holds degrees from Brown University, The Cooper Union and Princeton. His architectural firm SAA/Stan Allen Architect has realized buildings and urban projects in the United States, South America and Asia. Responding to the complexity of the modern city in creative ways, Stan Allen has developed an extensive catalogue of innovative design strategies, in particular looking at field theory, landscape architecture and ecology as models to revitalize the practice of architecture. Since 2008, he has received 3 P/A Awards and 5 AIA Awards, as well as the John Hejduk Award from the Cooper Union and an Academy Award in Architecture from the American Academy of Arts and Letters. His work is published in Points + Lines: Diagrams and Projects for the City, (2001) and his essays in Practice: Architecture, Technique and Representation (2008). His most recent book is Landform Building: Architecture's New Terrain, published in 2011.



Michael Arad, AIA

Handel Architects

Michael Arad's design for the National September 11 Memorial at the World Trade Center site, titled "Reflecting Absence," was selected by the Lower Manhattan Development Corporation from among more than 5,000 entries submitted in an international competition held in 2003. Mr. Arad joined the New York firm of Handel Architects as a Partner in April 2004 where he worked on realizing the Memorial design.

A native of Israel, Mr. Arad has also lived in the U.K., the United States and Mexico. He holds a B.A. from Dartmouth College and a Master of Architecture from the Georgia Institute of Technology. In New York, he worked for Kohn Pedersen Fox before joining the Design Department of the New York City Housing Authority, where he was working during the Memorial competition.

Mr. Arad is a recipient of the AIA's Young Architects Award, the Lower Manhattan Cultural Council's Liberty Award for Artistic Leadership, and with AIA and ASLA Honor Awards, as well as a AIA Presidential Citation for his work on the National September 11 Memorial.



John Arbuckle, AIA

Arbuckle Architectural Tours, LLC

Building upon many years of organizing and leading successful tours and educational programs for a variety of organizations, John Arbuckle established Arbuckle Architecture Tours, LLC. He is currently the co-chair of the Historic Buildings Committee (HBC) of the AIA New York Chapter and has recently joined the chapter's Architecture Tour Committee as a guide for Manhattan boat tours. He also serves on the Center for Architecture Exhibitions Committee. Dedicated to preserving and enhancing appreciation of Modern architecture, he is the President of DOCOMOMO New York/Tri-State, and a past member of the Board of Directors of DOCOMOMO US.

John brings professional experience with several prominent New York architecture firms. He was Director of Business Development at Gwathmey Siegel & Associates, Associate at Beckhard Richlan Szerbaty & Associates, successor to the office of Marcel Breuer, and Business Development Manager for Hoffmann Architects. He received a B.A. in Architecture in 1986 from the University of California at Berkeley, and pursued graduate studies in real estate development at Columbia University's Graduate School of Architecture, Planning and Preservation.



Rick Bell, FAIA
AIA NY

Rick Bell, FAIA, serves as executive director of AIA New York where he was instrumental in the creation of the Center for Architecture. The Center, under Rick's direction, has hosted 1,000 public events and 20 exhibitions each year since opening in October, 2003.

Previously, Rick was Chief Architect and Assistant Commissioner of Architecture & Engineering at New York City's public works agency, the Department of Design + Construction. He has served on the Boards of AIA New York, AIA New York State and AIA National.

Rick has also worked in the private sector, designing libraries, schools and university structures. A registered architect in several states, Rick was elected a Fellow of the AIA in 2000 for his work in public facility design. He holds degrees from Yale and Columbia and has received numerous awards for civic activities and design, and in 2013 was designated a Chevalier de l'Ordre des Arts et Lettres by the French Ministry of Culture. He will be the recipient of the 2014 Kemper Award at the AIA Convention in Chicago.



Lance Jay Brown, FAIA
Lance Jay Brown Architecture +
Urban Design

Lance Jay Brown, FAIA, DPACSA, is the principal of Lance Jay Brown Architecture + Urban Design in NYC, Fellow of the Institute for Urban Design, and ACSA Distinguished Professor at the Spitzer School of Architecture, CCNY. He was elected 2014 President of the AIA New York Chapter and is co-founder of it's Design for Risk and Reconstruction Committee.. He co-authored Urban Design for an Urban Century (2010) and co-edited and wrote for Beyond Zuccotti Park: Freedom of Assembly and the Occupation of Public Space (2012) and co-authored The Legacy Project: New Housing New York / Via Verde (2013). In 2007 he was awarded the prestigious AIA/ACSA Topaz Medallion for Excellence in Architectural Education. He has served as director of the School of Architecture at CCNY, director of the City College Architectural Center, and assistant director for programs at the National Endowment for the Arts. Lance teaches, lectures, and consults nationally and internationally.



Vishaan Chakrabarti, AIA
SHoP Architects

Vishaan Chakrabarti is a Partner at SHoP Architects and the author of the recently published, "A Country of Cities: A Manifesto for an Urban America". He also serves as the Holliday Associate Professor of Real Estate Development and the Director of the Center for Urban Real Estate, at Columbia University's GSAPP.

Previously, Chakrabarti was an Executive Vice President at the Related Companies where he oversaw Moynihan Station and development projects, including Hudson Yards. He also served as a Director for the NYC Department of City Planning, was the Director of Urban Design at SOM, and a transportation planner at the Port Authority of New York and New Jersey.

Chakrabarti holds a Master of Architecture from the University of California at Berkeley, a Master of City Planning from MIT, and dual Bachelors' degrees in Art History and Engineering from Cornell University. He serves on the boards of the Architectural League of New York and Enterprise Community Partners, is a trustee of the Citizens Budget Commission, and is an emeritus board member of Friends of the High Line.



David Childs, FAIA
SOM

David M. Childs is Chairman Emeritus of Skidmore, Owings & Merrill and serves as a Consulting Design Partner on selected projects in SOM's New York office. Mr. Childs has served as the Chairman of the National Capital Planning Commission and the Chairman of the Commission of Fine Arts in Washington, both Presidential appointments. He has been actively engaged on the boards of the American Academy in Rome, the Municipal Art Society, the National Building Museum, the Museum of Modern Art, the Architectural League, and the National Housing Partnership Foundation.

Mr. Childs' completed projects in Washington include the 1976 Washington Mall master plan and Constitution Gardens; the Dulles Airport expansion; and in New York, the JFK International Arrivals Building; the renovation of Lever House; the Time Warner Center at Columbus Circle, 7 World Trade Center, and One World Trade Center.

A graduate of the Yale School of Art and Architecture, Mr. Childs has juried, often as chairman, numerous design awards, has lectured at numerous symposia and has been internationally published.



Susan Chin, FAIA
Design Trust for Public Space

Susan Chin, FAIA is Executive Director of the Design Trust for Public Space, a nonprofit organization dedicated to the future of public space in New York City. Her projects include: Five Borough Farm, expanding urban agriculture in New York City; Making Midtown, creating a new bold vision for a 21st C. Garment District; and Under the Elevated, reclaiming space under bridges and rail lines to connect communities. The Design Trust has influenced the City's sustainability goals with its suite of guidelines, and incubated projects such as the High Line and the Taxi of Tomorrow.

For over 20 years she served as Assistant Commissioner for Capital Projects in the New York City Department of Cultural Affairs, overseeing more than \$3 billion in new construction, revitalization and public art projects. Chin was elected 2013–2014 AIA Vice President after having been AIA New York Chapter President. She has served on arts panels, lectured at colleges and universities and received numerous awards, like the 2013 James William Kideney Gold Medal Award and the Loeb Fellowship at Harvard.



Craig Dykers, AIA
Snøhetta

Since 1989, Craig Dykers has established offices in Norway, Egypt, England, and in the United States. His interest in design as a promoter of social and physical well-being is supported by ongoing observation and development of an innovative design process. As one of the Founding Partners of Snøhetta, Craig has led many of the office's prominent projects internationally, and he is currently overseeing Snøhetta's four New York City projects: the National September 11 Memorial Museum Pavilion, the new Times Square Reconstruction, the Far Rockaway Public Library in Queens, and the Westchester Branch Library in the Bronx.

Craig's work has led to numerous international awards including the Mies van der Rohe European Union Prize for Architecture, the World Architecture Award, and the Aga Kahn Award for Architecture, among many others. He has lectured extensively throughout Europe, Asia, and the Americas. He is an Honorary Fellow of the Royal Institute of British Architects, a Fellow of the Royal Society of Arts and Manufacturers, a LEED accredited professional, and a member of the American and Norwegian Institutes of Architects.



Karen Fairbanks, AIA
Marble Fairbanks

Karen Fairbanks is a founding partner of Marble Fairbanks, an architecture, design and research office in New York City, and Professor of Professional Practice and Chair of the Architecture Department at Barnard College, Columbia University. Karen was honored this fall as the 2013 Distinguished Alumna of Taubman College, The University of Michigan. She currently co-Chairs the NYC AIA Design Awards Committee and has been active in campus planning and building projects at Barnard College for the past 17 years. Marble Fairbanks specializes in cultural and institutional work including recent projects for Queens Library, Princeton University, Columbia University, New York University, Schomburg Center for Research in Black Culture, and the Museum of Modern Art (MoMA). The firm was selected twice for the NYC Department of Design and Construction's Design Excellence Program. The work of Marble Fairbanks is widely published internationally, has received numerous design awards and is part of the permanent collection of MoMA. In 2008, MoMA commissioned their project, Platform, for the exhibition Home Delivery: Fabricating the Modern Dwelling.



Stephan Freid, AIA
Skanska USA

Stephan Freid is a Senior Project Manager at Skanska USA currently responsible for the Architectural Preservation and Restoration of the General Assembly and Conference Building projects at the United Nations Headquarters in New York City. Prior to working on the UN, he served as Design Manager for the firm's work at the Hudson River Park in NY including parkland and buildings in the Chelsea Cove and Tribeca sections.

Prior to joining Skanska in 2005 he practiced Architecture as a Partner at HLW, serving as Studio Director for the firm's Science and Technology practice as well as managing large governmental, academic and public projects such as the Brooklyn Federal Courthouse, Midwood High School and research facilities for Amgen.

Actively involved in the arts community, he has collaborated with artists on Museum and Gallery commissions for institutions including MoMA, LACMA and the Whitney Museum of American Art. He is a member of the AIA and NCARB. He holds a BArch degree with honors from Pratt Institute, including the AIA Henry Adams Gold Medal.



Rosalie Genevro, Hon AIANY
The Architectural League of New York

As Executive Director of the Architectural League of New York, Rosalie Genevro has pursued the League's mission – to nurture excellence and engagement in architecture, design and urbanism – through consistent innovation in the content and format of live events, exhibitions and publications. She has conceived and developed projects that have mobilized the expertise of the League's international network of architects and designers towards applied projects in the public interest, including Vacant Lots, New Schools for New York, The Productive Park, Envisioning East New York, Worldview Cities and Urban Omnibus, and has directed the creation and travel of major exhibitions including “Ten Shades of Green” and “Urban Life: Housing in the Contemporary City.” Currently the League is developing the ambitious initiative “The Five Thousand Pound Life: New Ways of Thinking, Talking, and Acting on Architecture, Climate Change and Our Economic Future” under her direction. Genevro has served as a peer reviewer for the New York City departments of City Planning, Cultural Affairs, Design and Construction, and Parks and Recreation.



Hugh Hardy, FAIA
H3 Hardy Collaborative Architecture

Over his fifty-year career, Hugh Hardy has built and reshaped America's cultural landscape through architecture. Hugh's work is consistently recognized by civic, architectural, and preservation organizations for a progressive spirit and sensitivity to context. Hugh is the founding partner of H3 Hardy Collaboration Architecture, known for design of distinctive new buildings, restoration of historic structures, and planning projects for the public realm. His recent celebrated projects include Theatre for a New Audience at Polonsky Shakespeare Center, Claire Tow Theater at Lincoln Center; DiMenna Center for Classical Music; new Jackson Federal Courthouse; the restoration of Radio City Music Hall; multiple projects for the Brooklyn Academy of Music; and restoration of Bryant Park. His faithful restorations of New Victory and New Amsterdam theaters, among many other projects on 42nd Street, were pivotal in the reemergence of Theater Row as one of New York's premier places of entertainment. He is the author of Building Type Basics for Performing Arts Facilities (Wiley, 2006), and his latest book, Theater of Architecture, published in early 2013 by Princeton Architectural Press.



Matthew Johnson
Diller Scofidio + Renfro

Mr. Johnson joined DS+R in 1999 and became Senior Associate in 2004. He serves as the lead DS+R designer of the High Line, a collaboration with James Corner Field Operations. Mr. Johnson worked on the early design of the Eyebeam Museum, a concept office for Vitra; and the interactive media design of Blur for the Swiss Expo 2002. He was intimately involved in DS+R's Lincoln Center for the Performing Arts Redevelopment, including serving as project leader for the 65th Street Infoscape. He continues to work on new designs for the High Line, a new art school for Stanford University, and designs for the Cooper-Hewitt National Design Museum. With his extensive experience in new media and public art, Mr. Johnson has historically led media and independent projects for DS+R, including Facsimile, a multi-media public art installation in San Francisco; Pure Mix: The Snow Show, a temporary public art project in Finland; and Travelogues, an installation at JFK Airport. Mr. Johnson received his Bachelor of Architecture from the University of Michigan and his Master of Architecture from Princeton.



Marianne Kwok
Kohn Pederson Fox

Marianne Kwok has more than 20 years of professional experience in architectural design for a variety of built commercial, residential, and cultural facilities in North America, Europe and Asia. Since joining KPF in 1994, she has been the Senior Designer for some to the firm's most high-profile projects, including numerous corporate headquarters, mixed-use commercial developments, and master planning projects.

Currently, Ms. Kwok is the design director, working alongside KPF founding design principal Bill Pedersen, on Hudson Yards, a 26-acre mixed-use development for Manhattan's far west side, which includes over 13 million SF and features two Class-A office towers designed by KPF, as well as residential, retail, cultural and educational facilities. Ms. Kwok is also leading the design of One Shenzhen Bay, a 4.4 million SF mixed-use office, residential, hotel tower in Shenzhen, China.

Ms. Kwok received her Master of Architecture degree from the Harvard University Graduate School of Design and her Bachelor of Architecture degree from Cornell University.



Joseph Lengeling, AIA
SAMOO Architecture PC New York

COD member Joseph Lengeling AIA has been a resident of New York for well over thirty years and his passion for architecture has paralleled his passion for the city he now calls his “home town”. Originally from Iowa, it was the graduate program at Cornell University that eventually brought him to New York with a series of moves progressively eastward to larger and larger cities. Working with firms including Mitchell/Giurgola, Cooper Robertson, Magnusson, and FXFOWLE, he has completed projects internationally and nationally including Battery Park City urban design, Stuyvesant High School, and residential towers in New York. Most recently, he helped establish the first international office for SAMOO Architects of Seoul, South Korea. After practicing architecture for forty years he now is practicing retirement and is busy guiding tours with the AIA NY Chapter Around Manhattan boat tours in conjunction with Classic Harbor Lines.



Michael Manfredi, FAIA
Weiss/Manfredi

Michael Manfredi has been the Gensler Visiting Professor at Cornell University and is cofounder of WEISS/MANFREDI Architecture/Landscape/Urbanism, a multidisciplinary design practice based in New York City.

Known for the integration of architecture, art, infrastructure, and landscape, his firm won the American Academy of Arts and Letters Academy Award for Architecture, AIA New York’s Gold Medal, and the Architectural League of New York’s “Emerging Voices” award, acknowledging the distinct vision of the firm. His firm’s work has been exhibited internationally and he has taught at Yale, Princeton, and Harvard Universities. He is a founding board member of the Van Alen Institute and is on the board of Storefront for Art and Architecture.

The firm’s award-winning Hunter’s Point South Waterfront Park in New York and its Singh Center for Nanotechnology at UPenn recently opened to the public. WEISS/MANFREDI is currently redesigning the Washington Monument Grounds and creating new buildings at Kent State University and at Cornell NYC Tech’s Roosevelt Island Campus.



Scott Marble, AIA
Marble Fairbanks

Scott Marble is a founding partner of Marble Fairbanks and a faculty member at the Co-lumbia University Graduate School of Architecture, Planning, and Preservation where he is the Director of Integrated Design and Director of the Integrated Design Studios for The Columbia Building Intelligence Project. Scott recently edited a new book, Digital Workflows in Architecture: Design-Assembly-Industry that explores how the assimilation and synthesis of digital communications among architects, engineers, fabricators and builders is dramatically shifting how we work and our relationship to the tools we use. Marble Fairbanks specializes in cultural and institutional work including recent projects for Queens Library, Princeton University, Columbia University, New York University, Schomburg Center for Research in Black Culture, and the Museum of Modern Art (MoMA). The firm was selected twice for the NYC Department of Design and Construction’s Design Excellence Program. The work of Marble Fairbanks is widely published internationally, has received numerous design awards and is part of the permanent collection of MoMA. In 2008, MoMA commissioned their project, Flatform, for the exhibition Home Delivery: Fabricating the Modern Dwelling.



Chris McVoy
Steven Holl Architects

Chris McVoy has been with Steven Holl Architects since 1994 and was made partner in 2000. He received his Bachelor’s Degree in Architecture from the University of Virginia and his Masters of Architecture from Columbia University. He was honored with a Guggenheim Studentship in 1985; a William Kinne Travel Fellowship, and an American Scandinavian Foundation Grant. As Senior Partner, McVoy coordinates and advises on all projects in our New York office.

McVoy serves as Partner in Charge and Design Architect of the following projects which are currently in the design or development phase: the Museum of Fine Arts Houston, John F. Kennedy Center for the Performing Arts Expansion in Washington D.C; the Institute for Contemporary Art at Virginia Commonwealth University, Richmond, Virginia; and the new Visual Arts Building at the University of Iowa. Completed projects as Partner in Charge include the Campbell Sports Center at Columbia University, the Reid Building at the Glasgow School of Art, Glasgow, Scotland; the Nelson-Atkins Museum of Art, Kansas City, MO and the Whitney Water Purification Facility and Park, Connecticut.



Peter Mullan
Friends of the High Line

Peter Mullan is the Executive Vice President of Friends of the High Line. As FHL's Vice President for Planning and Design from 2004-2013, Peter has been responsible for all aspects of the physical development of the High Line, including planning, design, construction, and collaboration with the City of New York. He also led the community-based effort to preserve and redevelop the final section of the High Line at the West Side Rail Yards, which is currently under construction.

A registered architect, Peter is a graduate of Princeton University and the Yale School of Architecture, where he was the recipient of the Alpha Rho Chi medal for Leadership.



Gina Pollara
Gina Pollara, LLC

From August 2006 until December 2013, Gina Pollara served as Executive Director of the Franklin D. Roosevelt Four Freedoms Park, designed by the architect Louis I. Kahn for the southern tip of Roosevelt Island in New York City. She established the project office and then oversaw construction of the memorial park, which opened to the public in October 2012.

From 2001 to 2006, she served as Associate Director of the Irwin S. Chanin School of Architecture Archives of The Cooper Union and co-curated a number of exhibitions including the seminal one on the FDR Park.

Ms. Pollara has lectured widely on Louis Kahn and her water-related projects, and has been a visiting professor and guest critic at Arizona State University, The Cooper Union, Columbia University, Parsons School of Design, Pratt Institute, Morgan State University, New Jersey Institute of Technology, and Virginia Tech.

Ms. Pollara holds a Bachelor of Architecture Degree from The Cooper Union for the Advancement of Science and Art and a Bachelor of Art Degree from Bennington College.



Charles Renfro, AIA
Diller Scofidio + Renfro

Charles Renfro, AIA, is a Partner at Diller Scofidio + Renfro, an interdisciplinary design studio that integrates the performing arts, visual arts, and architecture. He has led design for the Institute of Contemporary Art in Boston, the redesign and expansion of the Juilliard School/Alice Tully Hall at Lincoln Center for the Performing Arts, the Blur Building in Switzerland, the Creative Arts Center at Brown University, the High Line, and the Berkeley Art Museum & Pacific Film Archive, among other projects. Charles is a graduate of Rice University and holds a Master of Architecture from Columbia University GSAPP. His work with DS+R has been exhibited worldwide at prestigious institutions including the Museum of Modern Art and the Whitney Museum. Charles' writings have been widely published and he lectures internationally. He teaches at Parsons the New School for Design, Columbia University, and School of Visual Arts and serves as the President of the Board for Storefront for Art and Architecture. In 2012, Charles was honored as a Rice University Distinguished Alumnus, making him one of the youngest recipients of this prestigious award.



Todd Schliemann, FAIA
Ennead Architects

Todd Schliemann is a Design Partner in Ennead Architects. His careful analyses of specific physical, environmental, historical and societal conditions have resulted in designs that expand the vocabulary of contemporary architecture and elevate public awareness of architecture's expressive power.

His designs are recognized internationally for architectural excellence and include such notable projects as the Rose Center for Earth and Space at the American Museum of Natural History; The Standard, High Line; Natural History Museum of Utah; New York Hall of Science; Weill Cornell Medical College Belfer Research Building and Weill Greenberg Center.

Mr. Schliemann received a Bachelor of Architecture degree from Cornell University and studied Urban Design at the Architectural Association in London. He is a member of the Architectural Advisory Committee of Cornell University, the Council of the New York Hall of Science and is a Fellow of the American Institute of Architects.



Toby Stewart

Renzo Piano Building Workshop

Toby Stewart joined the Renzo Piano Building Workshop (RPBW) in 2008. He spent three years in RPBW's Genoa Italy office and one year on-site in Boston, MA completing the design and construction of the Isabella Stewart Gardner Museum, which opened to the public in January 2012. Since February 2012, Toby has been based in NYC and working on the new downtown building of the Whitney Museum of American Art.

Previously, Toby worked with the executive architect in collaboration with RPBW to complete the construction of the California Academy of Sciences in San Francisco, CA.

Toby received his Masters of Architecture degree from the Rhode Island School of Design, and his Bachelor of Arts degree in Art History from the University of California at Berkeley.



Lisa Switkin

James Corner Field Operations

Lisa Switkin is a principal at James Corner Field Operations, a leading-edge landscape architecture, urban design and public realm practice based in New York City. Lisa is currently overseeing many of the practice's complex projects including the design and construction of the third section of the High Line and the South Street Seaport in New York City; Domino Sugar Waterfront and Greenpoint Landing in Brooklyn; Nicollet Mall in Minneapolis; and the Philadelphia Navy Yards Central Green. Lisa led the design of the first sections of the High Line from 2004-2007, the recently opened Tongva Park and Ken Gensler Square in Santa Monica, and the Race Street Pier in Philadelphia. She also worked on the Phase 1 projects for Shelby Farms Park in Memphis and the Master Plans for Fresh Kills Park and Seattle's Central Waterfront. Lisa was a Fellow at the American Academy in Rome in 2007-2008. She has a BA in Urban Planning with a focus on Community Development Planning from the University of Illinois, and a Masters in Landscape Architecture from the University of Pennsylvania. She has taught graduate level design studios and has lectured at universities, symposiums, foundations and institutions around the world.



Anna Torriani, AIA

Atelier Pagnamenta Torriani

Anna Torriani is a founding partner of Atelier Pagnamenta Torriani a New York based architectural firm. The studio's work includes educational projects ranging in scale from new academic buildings to custom design furniture.

Recent work comprises the award winning Mariners Harbor Library for the New York Public Library and the new Byblos University Library complex currently in design.

Anna Torriani is a strong advocate for design excellence in the public realm.

In 2010, she was appointed by United Nations Secretary-General Ban Ki-moon to serve on the Advisory Board of the United Nations Capital Master Plan. Her goal was conserving the original design concept.

Anna Torriani is co-chair of the Public Architecture Committee of the AIA NY.

Anna Torriani is a graduate of the ETH-Zürich, Switzerland.



Billie Tsien, AIA

Todd Williams Billie Tsien Architects

Billie Tsien has been in partnership with Tod Williams since 1986. Their studio, Tod Williams Billie Tsien Architects, located in New York City, focuses on work for institutions - museums, schools and non-profits; organizations that value issues of aspiration and meaning, timelessness and beauty. Their buildings are carefully made and useful in ways that speak to both efficiency and the spirit. A sense of rootedness, light, texture, detail, and most of all experience are at the heart of what they build.

Their compelling body of work includes the Natatorium at the Cranbrook School, the American Folk Art Museum in New York, the David Rubenstein Atrium at Lincoln Center, the Asia Society Center in Hong Kong, the Logan Center for the Arts at the University of Chicago, the Barnes Foundation in Philadelphia, and a skating facility in Brooklyn's Prospect Park.

Parallel to their practice, Tsien maintains an active teaching career and lectures worldwide.



Marion Weiss, FAIA
Weiss/Manfredi

Marion Weiss is the Graham Chair Professor of Architecture at the University of Pennsylvania School of Design and is cofounder of WEISS/MANFREDI Architecture/Landscape/Urbanism, a multidisciplinary design practice based in New York City.

Known for the integration of architecture, art, infrastructure, and landscape, her firm won the American Academy of Arts and Letters Academy Award for Architecture, AIA New York's Gold Medal, and the Architectural League of New York's "Emerging Voices" award, acknowledging the distinct vision of the firm. The work of her firm has been presented and exhibited at The Museum of Modern Art, the Solomon R. Guggenheim Museum, Design Centre in Essen, Germany, the National Building Museum, and the Louvre Museum. She has also taught at Yale University, Cornell University, and most recently at Harvard University.

WEISS/MANFREDI's Olympic Sculpture Park for the Seattle Art Museum, winner of an international competition, was awarded Harvard University's Veronica Rudge Green Prize in Urban Design, the first United States project to receive this award.



Claire Weisz, FAIA
WXY Architecture + Urban Design

Claire Weisz is an architect and urbanist, and a founding principal of WXY, an award-winning practice with a focus on innovative approaches to public space, structures, and cities. WXY has received the League Prize from the Architectural League of New York, and was selected as one of their Emerging Voices practices in 2011, in addition to receiving numerous awards from AIA National, AIA NY, and the APA.

Recent and ongoing work in NYC includes the redesign of Astor Place, the Spring Street Sanitation Garage, the redesign of the Rockaway Boardwalks, Pier 26's Boathouse/Restaurant, a design to better accommodate both pedestrians and elevated trains in Harlem, a study of Brooklyn's Tech Triangle, The East River Blueway Plan, and a pilot project for HUD's Rebuild by Design initiative. Claire co-founded The Design Trust for Public Space, has been on faculty at NYU's Wagner School of Public Service and a Visiting Critic of Urban Design at Cornell in NYC. Claire received her professional degree from The University of Toronto and her Master's in Architecture from Yale University.



Joseph Welker
James Carpenter Design Associates, Inc.

Joseph Welker is JCDA's Studio Director. He is currently senior designer and project manager of the Museum of Westward Expansion project below the St. Louis Arch. He is leading the design team of the 860 Washington commercial tower being built along the High Line in New York City. Previously he was the Project Manager for the Columbus Center cable net wall, at the time, the largest cable-net of its kind. Mr. Welker has also directed the Chattanooga Light Masts project in Chattanooga, TN and the Prismatic Marker located along the Anacostia River in Washington D.C. He was previously affiliated with the New York office of Skidmore Owings & Merrill where he was a senior architect on the Columbus Center development. Mr. Welker holds a Bachelor of Architecture from Cornell University.



Mark Wigley
Columbia University
Graduate School of Architecture,
Planning, and Preservation

An accomplished scholar and design teacher, Mark Wigley has written extensively on the theory and practice of architecture and is the author of Constant's New Babylon: The Hyper-Architecture of Desire (1998); White Walls, Designer Dresses: The Fashioning of Modern Architecture (1995); and The Architecture of Deconstruction: Derrida's Haunt (1993). He co-edited The Activist Drawing: Retracing Situationist Architectures from Constant's New Babylon to Beyond (2001). Wigley has served as curator for widely attended exhibitions at the Museum of Modern Art, New York; The Drawing Center, New York; Canadian Centre for Architecture, Montreal; and Witte de With Museum, Rotterdam. He received both his Bachelor of Architecture (1979) and his Ph.D. (1987) from the University of Auckland, New Zealand.



Tom Wright
Regional Plan Association

Tom Wright is the Executive Director of Regional Plan Association, a non-profit think-tank that compiles long range plans for the NY-NJ-CT metropolitan region. RPA provides long-term strategic planning for the tri-state region centered around New York City, including independent research, planning and advocacy for region-shaping initiatives such as mass transit and transportation infrastructure; open space preservation, sustainability and watershed planning; and community and economic development. RPA's reports and policies have shaped all major infrastructure investments in the region for almost a century. Previously, Mr. Wright was deputy executive director of the New Jersey Office of State Planning, and was coordinator of the award-winning Mayors' Institute on City Design, sponsored by the National Endowment for the Arts.

Mr. Wright teaches urban planning at Columbia's GSAPP, and lectures widely on growth management and regional planning. He holds a Bachelor of Arts in history from Princeton University, a Master of Science in Urban Planning from Columbia University, and is member of the Board of Directors of the Places Journal Foundation and the Arts Council of Princeton.

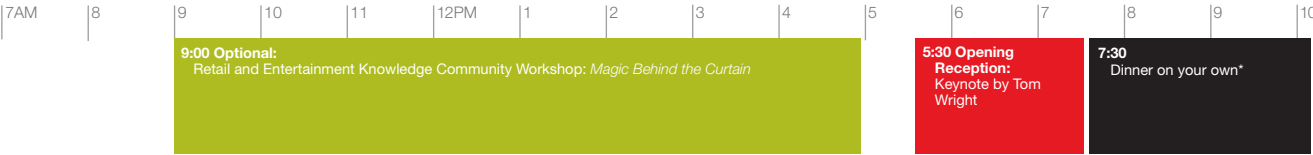
2014 AIA COMMITTEE ON DESIGN SPRING CONFERENCE: NEW YORK CITY

Conference Schedule

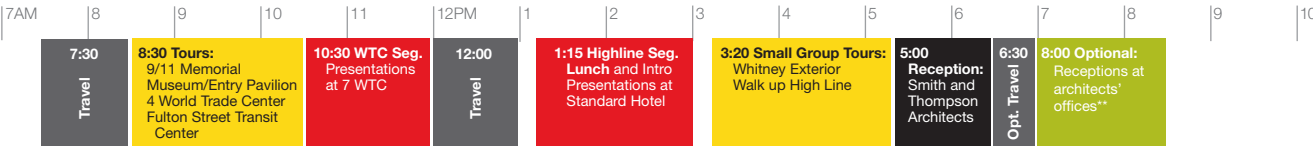
DAY 1 Thursday, May 15	DAY 2 Friday, May 16	DAY 3 Saturday, May 17	DAY 4 Sunday, May 18
Optional Workshop	Tours	Tours	Tour
Retail & Entertainment Knowledge Community	9/11 Memorial 9/11 Museum Entry Pavilion PATH Station West Concourse Whitney Construction Site High Line	Campbell Sports Center Future Manhattanville Campus Diana Center Science Building Stabile Center David Rubenstein Atrium Alice Tully Hall LCT3	United Nations
Opening Reception and Welcome	Reception at Smith and Thompson Architects	Closing Brunch	Hudson Hotel Roof Terrace
Knoll Showroom Tom Wright	Optional Receptions at Architecture Firms	Closing Dinner	Lance Jay Brown Stan Allen Susan Chin Vishaan Chakrabarti
		Center for Architecture Claire Weisz	

2014 AIA COD New York Conference Schedule: At-A-Glance

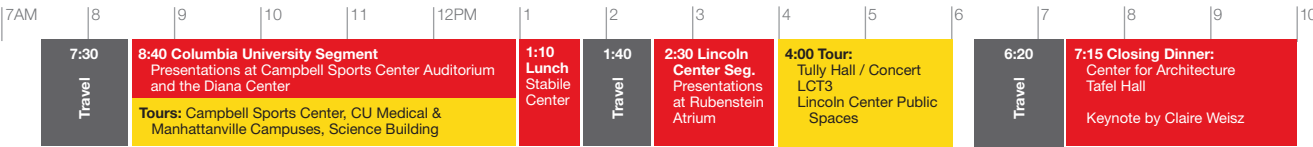
DAY 1: THURSDAY, MAY 15



DAY 2: FRIDAY, MAY 16



DAY 3: SATURDAY, MAY 17



DAY 4: SUNDAY, MAY 18



* Restaurant recommendations on page 94
**Office profiles on pages 58-61

Thursday | Conference Opening

[Schedule](#) | [Event Venues](#)

DAY 1: THURSDAY, MAY 15

9:00 AM-12:00 PM
Optional Workshop:

AIA Retail and Entertainment
Knowledge Community
Workshop: *Magic Behind the
Curtain*

2:00 PM
Optional Tour:

New Amsterdam Theater
42nd Street Area

3:00 PM-5:00 PM
Conference Registration

LOCATION:
The Hudson New York
356 West 58th Street

5:30 PM
Opening Reception and
Welcome

LOCATION:
Knoll Showroom
1330 Ave of the Americas
2nd Floor

REMARKS:
Welcome by Steve Alsbaugh,
2014 AIA COD Chair

Rick Bell, Executive Director,
AIA NY

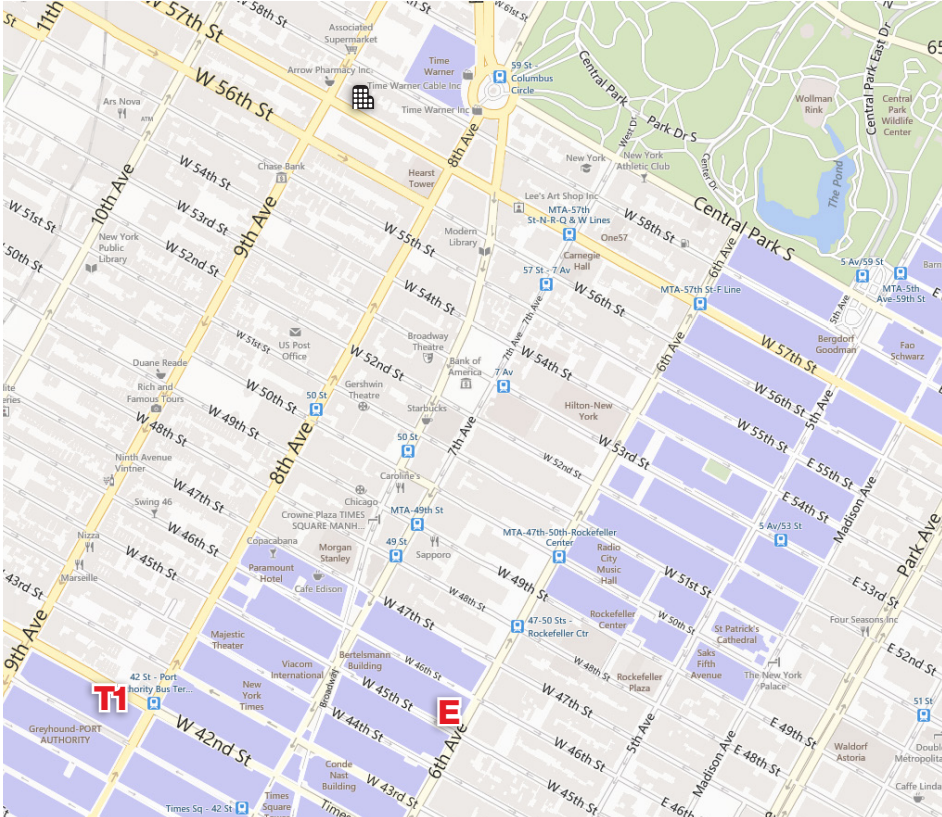
Lyn Rice, 2014 Spring
Conference Co-Chair




Rosalie Genevro, Executive
Director, The Architectural
League of NY

KEYNOTE:
Tom Wright, Executive Director
of Regional Plan Association

7:30 PM
Dinner on your own

A list of recommended
restuarants in the vicinity of the
hotel can be found on page 94.



 The Hudson Hotel
 New Amsterdam Theater
 Herman Miller Showroom



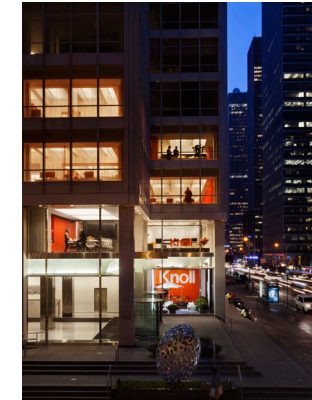
Knoll Showroom

Knoll New York, designed by ARO in collaboration with Knoll's Design Team, is both a workplace and a showroom – an expression of what makes Knoll unique in history, in planning, in materials and, of course, in furnishings.

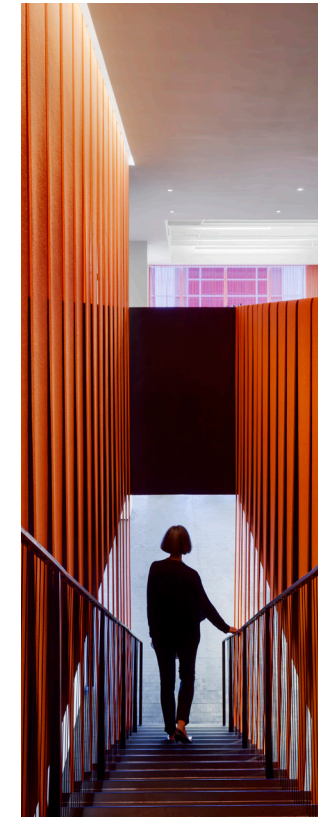
Since 1936, Knoll has been recognized internationally for creating workplace and residential furnishings that inspire, evolve, and endure. Today our commitment to modern design, understanding of the workplace, and dedication to sustainable design have yielded a unique portfolio of products that respond and adapt to changing needs.

The second floor tells the Knoll brand story, positioning products with scale and context. In addition to welcoming guests, this floor hosts events, showcases new product, and offers several casual work areas for employees and clients.

The third floor demonstrates how efficient planning creates a high-performing, social workspace. The fourth floor is a design laboratory, home to a flexible gallery space, workspaces for the product, interiors and textiles design teams, and fresh thinking for private office design.



(2013) Knoll Design Team and ARO
Photos: Eric Laignel



Friday | World Trade Center & High Line Segments

Schedule | Tour Sites and Event Venues

DAY 2: FRIDAY, MAY 16

World Trade Center Segment

**8:30 AM
Tour:**

LOCATION:
9/11 Museum Entry Pavilion
250 Greenwich St.

9/11 Memorial
West St/Liberty St

PATH Station West Concourse
Greenwich St/Vesey St

**10:30 AM
Presentations:**

LOCATION:
7 World Trade Center
250 Greenwich St

PRESENTATIONS:
1 World Trade Center
David Childs, SOM

September 11th Memorial
Michael Arad, Handel
Architects

September 11th Memorial
Museum Pavilion
Craig Dykers, Snøhetta

7 World Trade Center, Fulton
Street Transit Center and Dey
Street Concourse
Joseph Welker, JCDA

High Line Segment

**1:00 PM
Lunch and Introduction**

LOCATION:
Standard Hotel High Line Room
10th Ave/15th St

PRESENTATIONS:
The Standard Hotel
Todd Schliemann, Ennead

The High Line
Matthew Johnson, DS+R
Lisa Switkin, JCFO

Hudson Yards
Marianne Kwok, KPR

The Whitney
Toby Stewart, RPBW

**3:20 PM
Staggered Small Group Tours:**

LOCATIONS:
Whitney Construction Site
Gansevoort St/Washington St

Walk up High Line
Gansevoort St to 30th St

**5:00 PM
Reception**

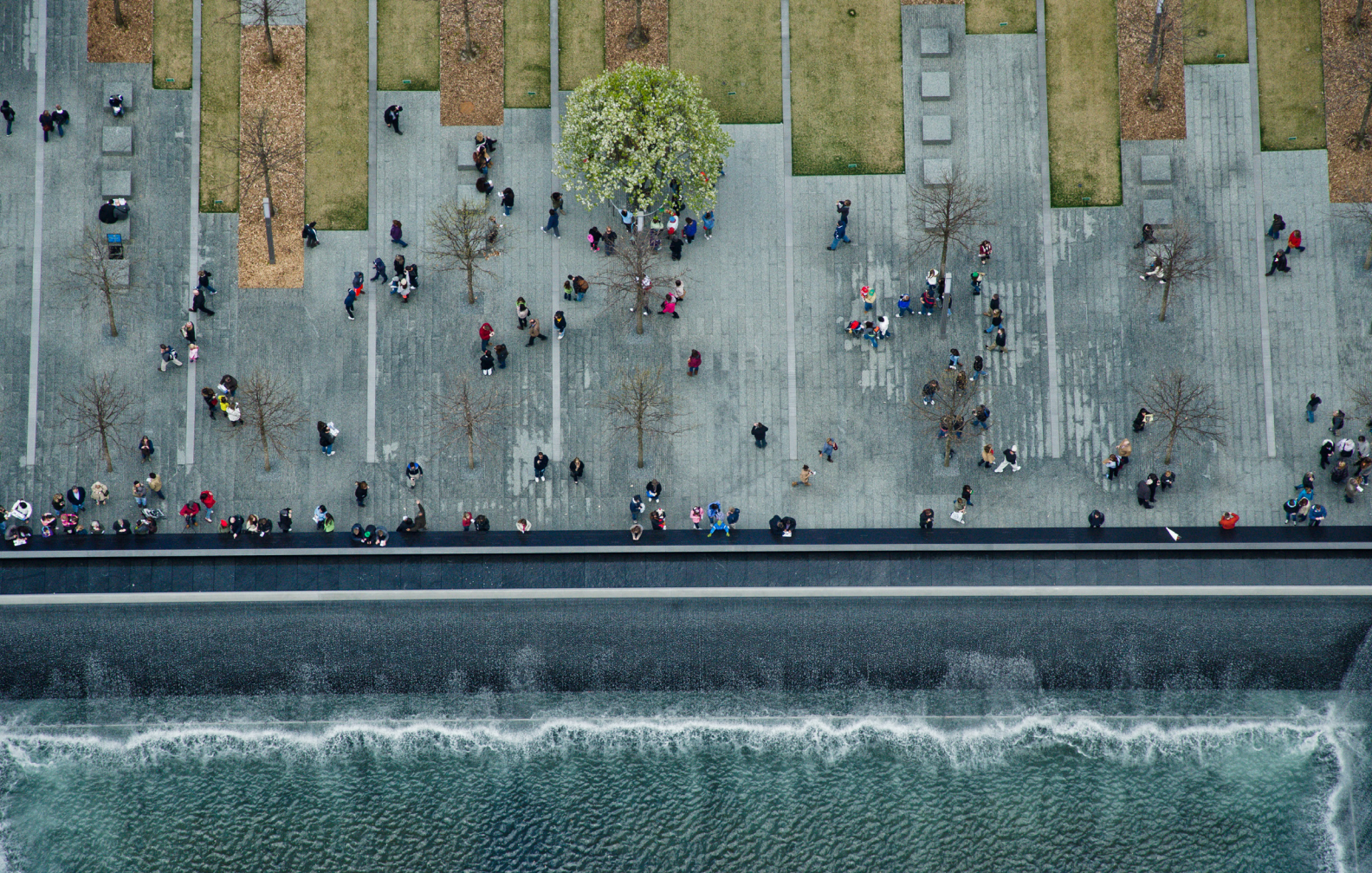
LOCATION:
Smith and Thompson Architects
501 W 23rd St, Entry off 10th Ave

**7:00 PM
Optional Receptions**

Small receptions will be held
at various architecture offices.
Firm profiles can be found on
pages 58-61.



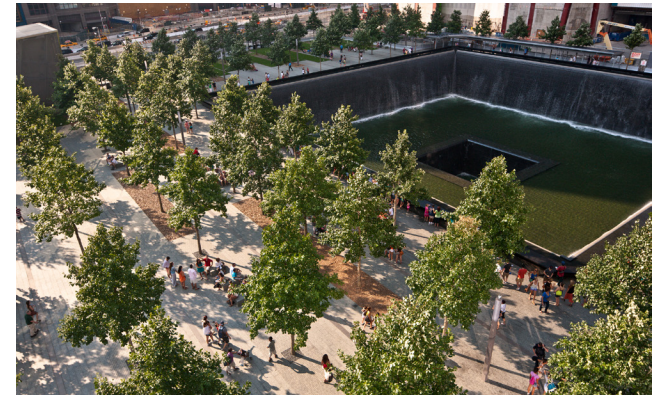
- T1** The Hudson Hotel
World Trade Center Area
4 World Trade Center
7 World Trade Center
9/11 Memorial
9/11 Museum Entry Pavilion
- T2** Fulton Street Transit Center
T3 The Standard Hotel
T4 The Whitney
E Smith and Thompson
Architects



September 11th Memorial

The National September 11th Memorial, title “Reflecting Absence,” is designed by Michael Arad of Handel Architects along with associate architect Davis Brody Bond. It was completed in 2011. The two pools take up eight of the sixteen acres of the site, which also includes a pedestrian plaza, five office towers, the September 11th Museum, a visitor orientation center, a transportation hub, a performing arts center, and underground services and pathways. Each reflecting pool is 192 feet by 192 feet and aligns with the footprints of

the former twin towers. Water cascades along the black Jet Mist granite into a seemingly endless void. Laser cut bronze panels inscribed with the names of all 2,983 victims of the terror attacks in 1993 and 2001 line the perimeter of each pool. The plaza designed by Peter Walker Partners is a suspended paving system and contains over 400 swamp white oak trees. The trees create a continuous canopy over the pavers during the summer and produce brilliant colors in the fall. Underground cisterns collect rainwater, which is recycled as irrigation water.



(2011) Handel Architects and Peter Walker Partners
Photos: Joe Woolhead



National September 11th Museum & Pavilion

The 125,000 square foot museum designed by Davis Brody Bond is located underneath the National September 11th Memorial plaza. The Entry Pavilion designed by Snøhetta rises above street level, providing natural light to the museum and connecting it to the plaza. Two of the original steel tridents from the trade towers are prominently featured in the glass atrium of the Pavilion. The glass facades balance transparency with reflectivity, allowing a clear view of the tridents from the plaza while also reflecting the clouds and canopy of the trees. Once inside, gentle ramps guide visitors

along a gradual descent into the museum, and viewing platforms provide a place for exhibits. At the lowest level, or “bedrock” level, a raw, cathedral-like hall features the original column footings and a slurry wall from the fallen towers. These become a backdrop for the salvaged 36 foot tall “last column” which is adorned with images and messages applied by rescuers during the recovery efforts. The original concrete egress stairs, or “Survivor Stairs,” flank the escalators that lead visitors back up to the plaza. The museum will open in Spring of 2014.



(2014) Snøhetta
Photos: Snøhetta



Photos above, left: Tower 1 Joint Venture LLC

One World Trade Center

One World Trade Center is designed by SOM with David Childs as the lead designer. It is co-developed by the Port Authority of New York & New Jersey and the Durst Organization. The skyscraper contains 3.1 million square feet of leasable office space, is 104 stories high, and is 1,776 feet tall, making it the tallest building in the western hemisphere. It is scheduled to open in 2014. The square base matches the dimensions of the original twin towers and contains a lobby, retail, and mechanical systems. The windowless base is made

of reinforced concrete covered with a metal and glass prismatic cladding. As the form rises in plan, the curtainwall corners gently taper up to the parapet. These facets are intended to reflect the changing colors of the sky and reinforce the iconic building as a beacon of hope. The top houses two observation decks and a restaurant. The spire extends 408 feet above the parapet and will serve as a place to hold broadcasting equipment. The equipment antenna is covered by a sculptural series of densely woven cables that glow with light at night.



(2014) SOM
Photo: Skidmore, Owings & Merrill LLP



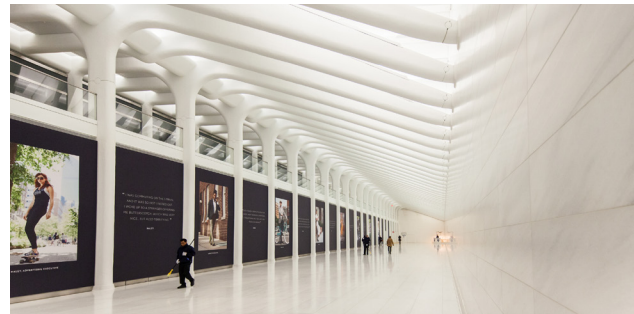
7 World Trade Center

7 World Trade Center, is designed by SOM with David Childs as lead designer. Completed in 2006, the building is 52 stories high, contains 1.6 million square feet of leasable office space, and secures a LEED Gold rating. It was the first building completed from the Daniel Libeskind masterplan and it replaces the original building that collapsed soon after the fall of the North Tower in 2001. Designed in collaboration with James Carpenter, the base is clad with a perforated steel screen that meets air flow requirements for the electrical equipment housed

on the first ten floors. The screen also conceals a solid concrete blast-proof base and allows LED lights to filter through at night. The blast-proof curtainwall at the lobby is highly engineered to allow for large expanses of clear uninterrupted glazing. At the back wall of the lobby, a large LED artwork installation by Jenny Holzer uses scale and rotating content to engage pedestrians. At the upper floors, the carefully crafted curtainwall has only faintly visible joints and acts as a mirror that reflects the changes in the sky throughout the day.

(2006) SOM and Carpenter
Photos right, below: Andreas Keller
Photo left: Daved Sundberg





World Trade Center PATH Transportation Hub

Designed by the AIA Gold Medal-winning architect Santiago Calatrava, the new station will be the main entry point for the New Jersey PATH commuter transit system and link to twelve subways, surrounding office towers, the Memorial and Museum, Hudson River ferry terminals, and The World Financial Center. The 800,000 sf hub is developed in collaboration with the Port Authority of NY & NJ, the US Department of Transportation, and the Federal Transit Administration. It will serve a projected ridership of 250,000 daily commuters

and feature climate-controlled platforms, advanced signal systems, and superior lighting and finishes. Inspired by a child releasing a dove into the air, the unique, highly-engineered form brings a bold and architectural beauty that is often hard to achieve in a dense urban setting. The glass and steel “wings” soar 150 feet in the air and filter natural light into a grand hall and rail platforms 60 feet below grade. This grand, multi-story hall and will include waiting areas, retail shops, and open pedestrian concourses. While it is scheduled for completion in 2015,

the white-marble clad western concourse was recently opened to help alleviate pedestrian traffic surrounding the construction site.

(2014) Calatrava
Photos above: Joe Woolhead



4 World Trade Center

Designed by Pritzker Prize and AIA Gold Medal-winning architect Fumihiko Maki, this is the first and southernmost of four towers to be completed in a spiral of towers to the east and the northwest terminating in 1 WTC as originally proposed in Daniel Libeskind's competition winning master plan.

At 2.3 million sf and 978 feet tall, the tower is sheathed in a thicker than usual 3/8-inch low-iron outer lite for the insulated glazing units, each floor to floor unit extending beyond the spandrel for minimal visual interruption. With its notched corners, allowing twice the number of corner offices, and

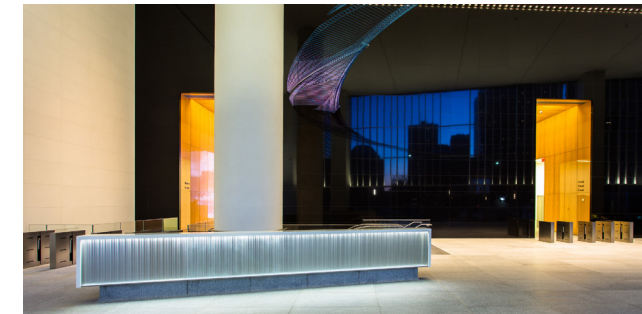
highly refined, silvery curtain wall, the building at times seems to merge into the sky.

On the 57th floor there is a setback accommodating a large sky terrace which is poised to be one of the city's premiere outdoor spaces offering dramatic views of the harbor and New Jersey beyond.

The double height lobby overlooks the memorial park and is faced in polished dark grey granite reflecting the park outside. The floors are light grey with white ceilings seamlessly flowing into white columns

structurally designed to be as few as possible. Retail space, facing the pedestrian extension of Cortlandt Street, together with the welcoming lobby make a strong urban streetscape.

(2014) Maki and Associates
Photo above: Michael Calcagno
Photo right, left: Joe Woolhead



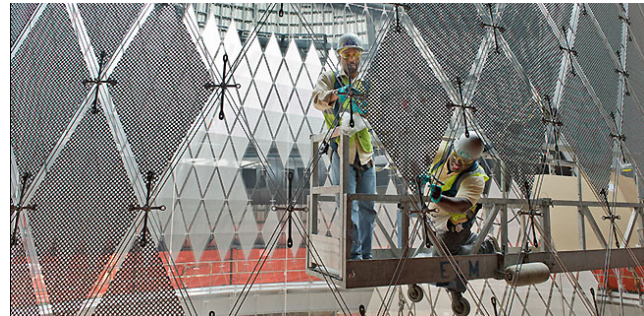


(2014) Grimshaw and Arup
 Photo left: David Sundberg
 Photos right: Patrick Cashin, CTA

Fulton Street Transit Center

Scheduled for completion in June 2014, Fulton Center is designed by Grimshaw in collaboration with Arup. The prominently-featured glass and cable net oculus in the atrium is designed by James Carpenter. Owned by the New York City MTA, this 366,000 square foot transportation hub connects 11 subway lines, links to the new PATH station, and houses retail shops. Over 275,000 commuters will pass through the hub every day. The four story oval atrium will be a gracious, light filled civic space that draws passersby to the shops. The atrium features a

“sky reflector net,” a hyperbolic paraboloid cable net and reflector panels programmed to optimize the amount and distribution of natural light into the atrium and surrounding platforms. The central atrium is intended to reduce reliance on wayfinding and provide a more intuitive experience for travelers. A series of platforms, stairs, and escalators surrounding the atrium provide links to the surrounding subway platforms, retail shops, and pedestrian tunnels. The glass exterior lies on a street corner, expressing its public nature within the urban context.





Standard Hotel

This 200,000 sf boutique hotel by Ennead Architects has 337 guest rooms, a restaurant, lounge, outdoor cafe, spa, conference center and outdoor urban plazas. Owned by André Balazs, it opened in 2009 and is a popular hotspot in the Meatpacking District. The project redefines the traditional hotel model, which usually prioritizes guest privacy and requires thru-wall mechanical units. The High Line and the hotel come together to define new urban spaces. Sculptural concrete legs rise from the ground to support a horizontal podium that floats above the High Line. The

massing above the podium is simple, with just a slight rotation in plan at its hinge. The pressure glazed curtainwall system adds a playful texture and contrasts the rugged, industrial nature of the concrete frame. At the ground floor, the restaurant, plaza and cafe reflect the surrounding eclectic character of the neighborhood, which contrasts cobblestone streets and historic buildings with trendy, high-end shopping and dining.

(2009) Polshek Partnership/Ennead
Photos left, top right: Jeff Goldberg
Photo right: Nikolas Koenig



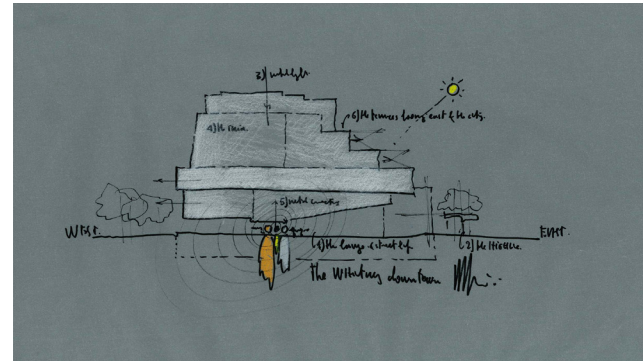


The Whitney

Slated for completion in 2015, this new museum in the Meatpacking District will be the sister to the existing Upper East Side Whitney designed by Marcel Breuer in 1966. Designed by Renzo Piano in collaboration with Cooper Robertson & Partners, the building will feature 50,000 sf of indoor gallery space. It will also have 13,000 sf of outdoor gallery space, reflecting the building's close relationship to the neighboring High Line. The building form is a reaction to the vitality of the surrounding neighborhood, the opportunities for remarkable views, and the

desire to reach out to the public. Upon approach, a large outdoor plaza covered by a dramatically cantilevered canopy greets visitors. A transparent lobby and restaurant allow for full views straight through the ground floor of the building. The base will house a conservation lab, study center, research library, classrooms and a theater. The top four floors will be dedicated to open, light filled, columnless gallery space and an outdoor café.

(2015) RPBW
Images: RPBW



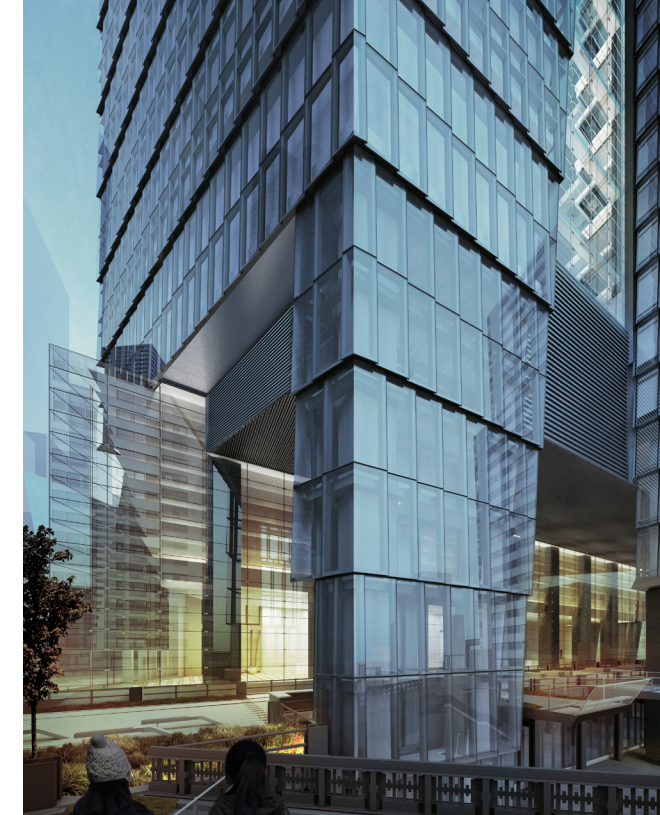


(2025) KPF, SOM and DS+R
Photos: KPF

Hudson Yards

This massive, historic development project will create a mini-city and provide much needed expansion for the Midtown business district. In May of 2010, the New York City MTA leased the air rights over the existing rail yard for 99 years to Related Companies and Oxford Properties Group. The site is bound by West 30th Street and West 34th Street between 10th Avenue and the Hudson River. KPF's master plan includes 17 new buildings and 14 acres of public space on the 26 acre site. The program includes 13 million of residential and office space, a

750 seat public school, 1 million sf of retail, a 200,000 sf hotel and a new performance venue known as the "cultural shed." This DS+R building will anchor the north terminus of the High Line and house multiple scales of cultural events. The first phase, The Eastern Rail Yard, is now under construction and includes two KPF designed office towers, two buildings by DS+R and a residential tower by David Childs/SOM. The second phase, The Western Rail Yard, will feature primarily residential buildings. Anticipated completion is in 2025.



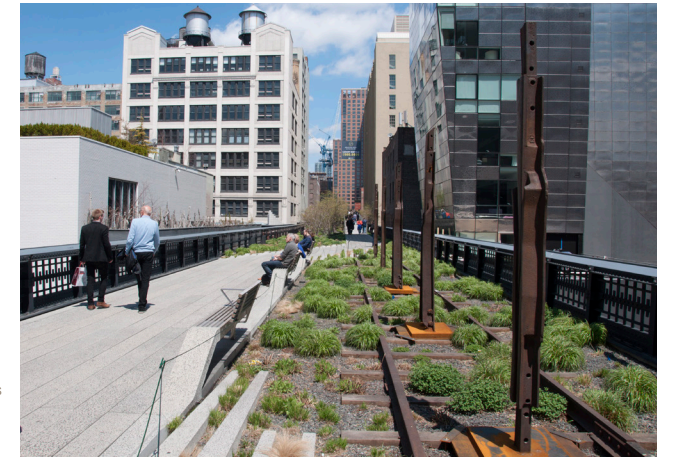


The High Line

This linear urban park is 1.45 mile long, hovers 30 feet above the ground, and runs from Gansevoort Street to 34th Street on the west side of Manhattan. The park is built upon an old freight rail line that, until 1980, was used to transport meat to the Meatpacking District. Overgrown for decades, the rail line was slated for demolition until the organization The Friends of the High Line convinced the Bloomberg administration to stop the removal and make it into a park. The first section of the park opened in 2011 to high praise and popularity. It is

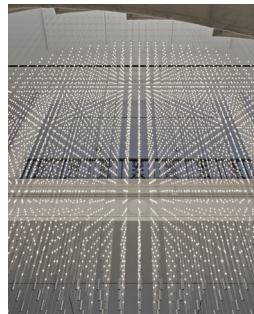
designed by DS+R and James Corner Field Operations. The design captures the eclectic and industrial nature of its past and blurs the line between hardscape and vegetation, public and private and old and new. It temporarily slows down the pace of the city dweller and changes him or her from a participant of the city to a mere observer. Its success has fueled the real estate market in the neighborhood and brought success to local shops and cafes.

(2011) DS+R, James Corner Field Operations
Photo left: Friends of the High Line
Photos right: Mark Goldberg



Office Reception Venues

Firm Descriptions



Cooper Joseph Studio

Cooper Joseph Studio was founded in 2008. Our collaboration grows out of our shared desire to think holistically about building construction and conceptual design. We have a diverse portfolio of work, reflecting our broad interests, technological skills with a desire to explore ideas that are profound and transformative. From the intimacy of residential work to formidable challenges of public work to the educational opportunity of museum installation we impose the same dedication of time and intellectual rigor. Our work is carefully crafted, and we consider the execution of detail to be integral to the larger whole so that the entire project has a cohesive quality. This attitude is part of a modernist tradition and is refined by attention to local vernacular and specific aspects of the site.

Photo: Eduard Hueber Archphoto



LEVENBETTS

LEVENBETTS is an award winning New York City based architecture practice. The office was founded by David Leven with Stella Betts in 1997 and focuses on projects at all scales of urban design, public buildings, houses and housing, workspaces, exhibitions and furniture. Currently the office is working on a 300,000 SF ground up building in Harlem with an outdoor public garden, the renovation to Cornell University's East Sibley Hall, a Branch Library renovation in Brooklyn and several houses in NY State.

LEVENBETTS has won several NYC AIA awards (2011, 2010, 2008, 2005, 2004, 2003), the Architectural League's Young Architects Forum (2003) and Emerging Voices Awards (2009), Architectural Record's Design Vanguard (2007) award, I.D. Annual Design Review Award (2004) and been exhibited widely. In addition, the work of LEVENBETTS has been published in various design magazines and books, and Princeton Architectural Press published a monograph on the firm's work in 2008.



Richard Meier & Partners Architects

The work of Richard Meier & Partners is instantly recognizable and internationally respected. For over five decades, we have been appointed to create important public and private buildings. Our offices in New York and Los Angeles employ a multicultural staff of talented professionals practicing architecture, urbanism, product design and exhibition design – currently with new projects in North America, South America, Europe, and Asia. We aspire to thoughtful, elegant contemporary architecture that exceeds our clients' expectations for beauty and elegance.

Richard Meier & Partners is led by Richard Meier and six partners – Michael Palladino, James R. Crawford, Bernhard Karpf, Vivian Lee, Reynolds Logan, Dukho Yeon – and sustains an international practice with offices in New York and Los Angeles.

Photo: © Silja Magg



Pei Cobb Freed & Partners Architects

With projects in progress in North America, Europe, the Middle East, Asia, and Australia, Pei Cobb Freed & Partners is a leader in architectural design and sustainability. Across five decades of exceptionally diverse practice, the firm has completed building and planning projects in more than 100 cities around the world. Based in New York, the firm's eight partners and approximately 100 colleagues approach each project on its own terms, drawing inspiration less from formal or theoretical preconceptions than from particularities of place and program. Consistently recognized for excellence in design, the firm's projects have received more than 200 major awards, including 24 AIA National Honor Awards.



Ronnette Riley Architects

Ronnette Riley Architect, a 24-person firm, has been built on translating client's goals into elegant and effective design solutions. Project types encompass institutional, corporate, hospitality, retail and residential. In the past year, the firm has been recognized for master planning efforts associated with the rebuilding and restoration of coastal communities in the aftermath of Superstorm Sandy. Recent projects include 120,000 sf offices for the Port Authority of NYNJ in New Jersey, 62,000 sf of new classroom facilities for New York Institute of Technology in Manhattan and several stores for Farrow & Ball.



SAMOO Architecture PC

Please join Sang Won Lee, AIA, Sang Joon Kim, KIA, and COD member Joseph Lengeling, AIA of SAMOO Architecture PC for conversation, drinks and supper at their offices on the 38th floor of the New York Times Tower.

Enjoy the late sunset and "lights up" over Manhattan with extensive views of downtown and the Hudson River.

Designed by Renzo Piano Building Workshop in association with FXFOWLE Architects the 52 story tower was completed in 2007 and houses both the headquarters of the New York Times newspaper offices on lower floors and multi tenant spaces above. The remarkable design features an exoskeleton framing system with full height clear glazing and a unique screen of ceramic rods set off of the exterior to provide shading.

SAMOO Architecture PC Is the first office in the United States for SAMOO Architects and Engineers of Seoul, South Korea as part of an initiative to expand their firm of over 1,300 employees to a more global platform throughout the world.



Smith and Thompson Architects

Phillip Smith and Douglas Thompson of Smith and Thompson Architects, are pleased to share cocktails and conversation at our studio in Chelsea after your tour of the High Line. The studio was a pioneering building in the Chelsea Art District when it was built in the late 90's on formerly vacant land. Large sheets of steel enclose a highly transparent building arranged around a sculpture court. An art gallery occupies the three lower floors above which the architect's office steps back, providing several rooftop spaces in the treetops. Inside, the office desks and facilities fold into the walls to create an open space for hosting social events.



Snøhetta

For 25 years, Snøhetta has designed some of the world's most notable public and cultural projects. Snøhetta kick-started its career in 1989 with the competition-winning entry for the new library of Alexandria, Egypt. This was later followed by the commission for the Norwegian National Opera in Oslo and the National September 11th Memorial Museum Pavilion at the World Trade Center in New York City. Since its inception, the practice has maintained its original trans-disciplinary approach, integrating architectural, landscape and interior design in all of its projects.

Snøhetta is currently working on a number of educational, civic and cultural projects internationally including the expansion of the San Francisco Museum of Modern Art in California, the Isabel Bader Center for the Performing Arts at Queens University in Kingston, Ontario, the Far Rockaway Public Library in New York City, and the redevelopment of Times Square in New York City, expected to be completed in 2016. Snøhetta's New York office is led by Founding Partner, Craig Dykers.



Robert A.M. Stern Architects

Robert A.M. Stern Architects, LLP, is a 300-person architecture firm that has over its forty-five-year history established an international reputation with an extraordinarily diverse portfolio—single-family houses to office towers, tabletop to town planning—and geographic scope. The firm doesn't promote a signature style all its own; rather, RAMSA's scholarly approach aims to express our clients' goals and ambitions in ways that fit into the context—both physical and cultural—of the places in which we build. Bob Stern and his 15 design partners lead an office organized into six studios. The firm works with all the latest design technologies and also continues the traditions of hand-drawing and model-building to support the design process.



The Hudson Hotel

E Smith and Thompson Architects
501 W 23rd St

01 Cooper Joseph Studio
500 Park Ave #16

02 LEVENBETTS
508 W 26th St #317

03 Richard Meier & Partners
475 10th Ave, 6th Floor

04 Pei Cobb Freed & Partners
88 Pine St

05 Ronnette Riley Architects
350 5th Ave, Suite 7401

06 SAMOO Architecture PC
620 8th Ave, 38th Floor

07 Snøhetta
25 Broadway, 2nd Floor

08 Robert AM Stern Architects
460 West 34th St

Saturday | Columbia University & Lincoln Center Segments

Schedule | Tour Sites and Event Venues

DAY 3: SATURDAY, MAY 17

Columbia University Segment

7:30 AM

Meet at Hudson Hotel Lobby to depart for Campbell Sports Center

8:40 AM
Introduction and Tour:

PRESENTATION:
Chris McVoy, Steven Holl Architects

LOCATION:
Campbell Sports Center
Broadway/218th St

10:30 AM
Presentations and Tours:

LOCATIONS:
Bus Tour of CU Medical Campus & Future Manhattanville Campus w/ John Arbuckle & Joseph Lengeling

Diana Center and Science Building
Broadway/118th St

PRESENTATIONS (DIANA CENTER):
Manhattanville Campus and Science Building
Mark Wigley, CU GSAPP

Diana Center
Marion Weiss and Michael Manfredi, Weiss/Manfredi

Toni Stabile Student Center
Scott Marble and Karen Fairbanks, Marble Fairbanks

1:10 PM
Box Lunch:

LOCATION:
Toni Stabile Student Center
Broadway/118th St

Lincoln Center Segment

2:30 PM
Introduction:

LOCATION:
Rubenstein Atrium
Broadway/62nd St

PRESENTATIONS:
Rubenstein Atrium
Billie Tsien, Tod Williams Billie Tsien Architects

Alice Tully Hall/LC Plaza & Cafe
Charles Renfro, DS+R

LCT3
Hugh Hardy, H3 Hardy Collaborative Architecture

3:50 PM
Tours:

LOCATION:
Alice Tully Hall, LCT3, LC Plaza, & Cafe
Broadway/65th St

5:50 PM
Optional:

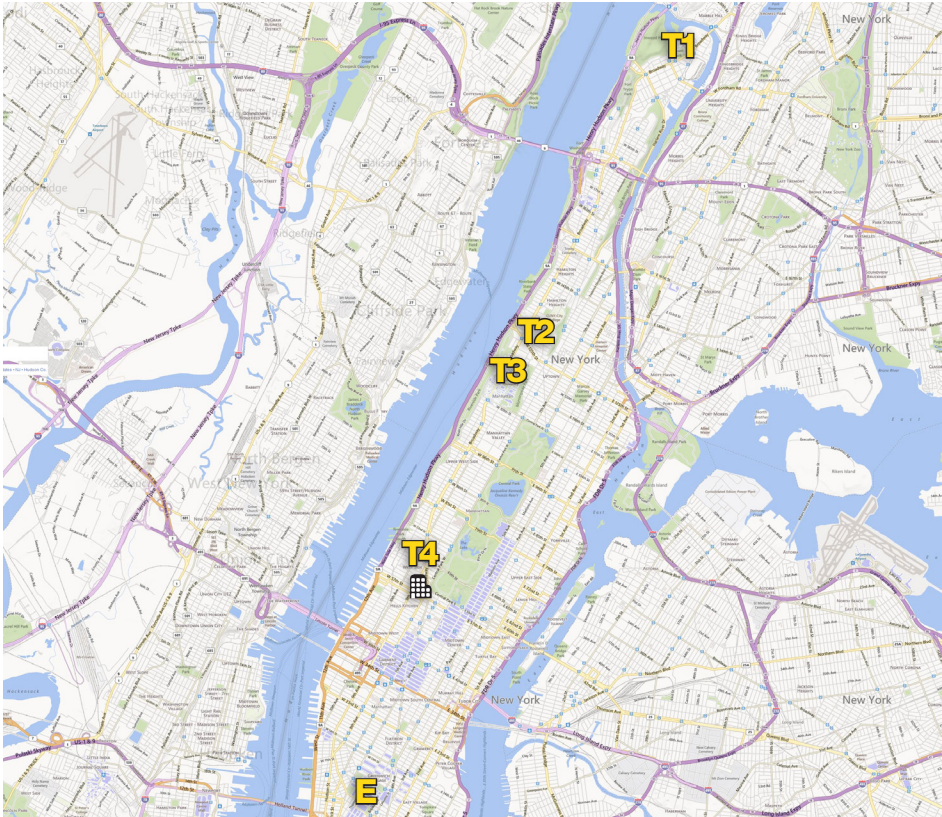
Return to hotel to refresh

7:15 PM
Closing Dinner

LOCATION:
Center for Architecture Tafel Hall
536 LaGuardia Place

KEYNOTE:
Claire Weisz, WXY Architecture + Urban Design

Annual COD Member Slideshow



-  The Hudson Hotel
- T1** Campbell Sports Center
- T2** Columbia University - Medical & Future Manhattanville Campus
- T3** Columbia University - Diana Center, Stabile Student Center, Science Building
- T4** Lincoln Center Campus
- E** Center for Architecture



Campbell Sports Center

This 48,000 sf complex houses strength and conditioning spaces, offices for varsity sports, theater style meeting rooms, a hospitality suite and student athlete study rooms.

Inspired by sports “field play diagrams”, the points on the stepped landscape support a hovering collection of irregular blocks and voids connected by exterior stairways forming a new gateway to the revitalized Baker Athletic Complex. With an exposed concrete and steel structure and a facade of sanded aluminum panels, the structure enables a notably lightweight

steel tonnage.

Reacting to the irregular topography and the nearby cinderblock sheds, the building evokes the adjacent elevated train line and the Broadway Bridge. As Justin Davidson said in New York Magazine, it’s an “athletic structure that moves in various directions at once. It charges up the hill, twists toward the playing fields, and embraces the yard with outstretched arms.”

(2013) Holl

Photos: Meredith Zanotta





Columbia University Manhattanville Campus

Five blocks north of the original McKim, Mead & White campus, Columbia is building a new 17 acre, 6.8 million sf campus scheduled for completion by 2030.

The northern boundary of the (Manhattanville) site will adjoin the expanded campus of the City University of New York at 130th Street. Columbia's medical campus further north will be the site of a new building being designed by Diller Scofidio + Renfro at 171st Street. In stark contrast to the sequestered original campus, the lower floors of the buildings will be public and

commercial spaces including a new secondary school for math, science and engineering. A School of Engineering and Applied Sciences and a new Institute for Data Sciences will open in 2015, followed by the School of the Arts in 2016, both designed by Renzo Piano Building Workshop and SOM who also developed the master plan.

SOM, RPBW, and DS+R
Images: Columbia University





Stabile Student Center

Completed in 2009, this renovation and addition to a McKim, Mead & White building on the Columbia campus includes a café, a Social Hub, classrooms, and office space for the Graduate School of Journalism. The architects took advantage of an existing slot between two historic limestone facades to create the café. Large, mullion-less expanses of glass make the intervention barely visible from the exterior. One of these large panels is operable, allowing the café to open up completely to the campus on nice days. Adjacent to the café is a lounge

area referred to as the Social Hub, which is designed to foster interaction between students and faculty. Designed in collaboration with the School, custom fabricated laser-cut metal panels adorn the walls of the Social Hub. The patterns of the metal panels are a digital interpretation that reflects the School's teaching culture, which is a combination of traditional methods and modern innovation.

(2009) Marble Fairbanks
Photos: Marble Fairbanks





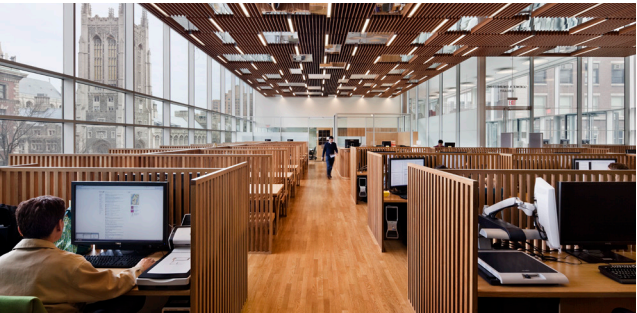
Science Building

Rafael Moneo's 45,000 sf Science Building is located on the last available site of McKim, Mead, and White's original 1893 campus master plan for Columbia University at Morningside Heights. The master plan dictated a continuous cornice line twenty feet above street level at 116th Street, reaching more than thirty feet at 121st street, making connecting to the adjoining neighborhood a challenge.

With the advent of Columbia's new campus in Manhattanville four blocks to the north, a project that will double the size of the existing campus, the design uses

this key site to provide vertical circulation with adjoining public spaces through the Science Building down to the street, while integrating the cornice requirement into a rough hewn limestone base for a dramatic glass tower. Aluminum fins reflect the diagonal bracing of the structurally complex building, set on deep trusses spanning 200 feet above the existing gymnasium below. The interiors, including 20,000 sf of labs and a 13,000 sf research library, are visible in the mostly glass east facade, emphasizing connectivity to the campus community.

(2010) Moneo Brock Studio
Photos: Michael Moran





Barnard College Diana Center

Winner of a national design competition, this 98,000 sf building was recently completed by Weiss Manfredi Architects. This new student center for the Barnard College campus brings together spaces for art, architecture, theater and art history as well as faculty offices, a dining room and a cafe.

Uniting landscape and architecture, the Diana Center extends Lehman Lawn with descending planted terraces to engage the buildings at the north end of the campus that were previously isolated by a 14' high retaining wall. The green roof

provides a 28,000 sf ecological learning center and new social space.

A two-story atria ascending diagonally through the building allows for continuous sightlines through the gallery, reading room, dining room and cafe while the lower levels contains a 500 seat event space and a black box theater.

The contemporary luminous and energy efficient wall is composed of translucent fritted glass and an integral color panel system.

(2010) Weiss Manfredi
Photo: Albert Vecerka/Esto





David Rubenstein Atrium at Lincoln Center

Designed by esteemed architects Tod Williams and Billie Tsien, the 7,000 sf atrium is part of the sixteen-acre Lincoln Center campus and is one of about 500 privately owned public spaces in New York City. The tall, open space is host to many free events throughout the year and includes a cafe, restrooms, informal seating, a box office and an information center. Located on Broadway, the atrium feels carved out of the dense urban fabric. Its tall glass facades and cantilevered canopies reach out and invite the public inside. Blue Pietra stone surrounding a

calming water feature and two 21 foot tall hydroponic green walls bring the outside inside. Sixteen large oculi fill the atrium with natural light during the day and glow with colorful LED lighting at night. A large, felt wall art installation by Claudy Jongstra takes inspiration from the organic shapes of the oculi. A 42' wide video screen activates the atrium with rotating artwork, provides the means to telecast performances to the public, and serves as a theater for video performances.

(2009) Williams Tsien
Photos: Nic Lehoux





Lincoln Center Alice Tully Hall

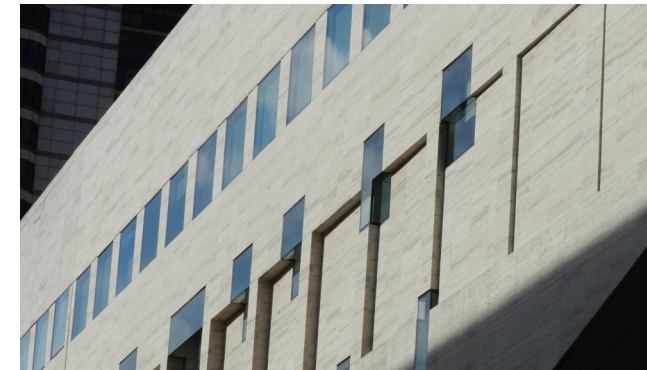
Alice Tully Hall was built in 1921 in the Brutalist Style as part of the Lincoln Center campus. The renovation, completed in 2009 by DS+R in collaboration with FXFowle, not only modernized the building, but also fixed some inherent problems with the original design. The renovation included the removal of a wide, elevated pedestrian bridge over 65th Street which felt oppressive and disconnected from the city. The former entrance on 65th Street, which was nearly buried under a stair, was removed. A new glass entrance on the corner now opens up the lobby, making

it feel like part of the public plaza along Broadway. The new east facade holds true to the diagonal edge of Broadway, previously ignored by the original building. And, a new corner grandstand in the plaza invites tourists to stop, rest and people watch. Inside the building, the 1,100 person, state-of-the-art performance hall is clad with African hardwood veneer concealing LED lighting, creating a soft continuous glow from every angle of the room.

(2009) DS+R

Photos left, bottom right: Meredith Zanotta

Photo top right: Steve Alspaugh





Lincoln Center Claire Tow Theater

The Claire Tow Theater designed by H3 Architects is the first new performance hall to the Lincoln Center campus since its conception in the 1920's. The theater was conceived as a way to attract younger audiences and host experimental theatrical productions, breaking from the Center's reputation for traditional performance art. The 23,000 sf intervention to the Eero Saarinen-designed Vivian Beaumont Theater holds a 112 seat theater, administrative space and rehearsal rooms. The existing building is a simple glass box with a cantilevered roof clad in large

travertine panels. It overlooks a black granite reflecting pool and the new DS+R-designed public lawn and restaurant. The H3 addition speaks to the quiet, formal massing of the building. The complementary glass box with metal sun screen perches atop the roof, now resurfaced with vegetation and a large outdoor terrace. The simple box glows at night and recedes into the sky during the day.

(2012) H3C

Photo: Francis Dzirkowski/Esto



Sunday | United Nations & Conference Closing

[Schedule](#) | [Tour Sites and Event Venues](#)

DAY 4: SUNDAY, MAY 18

United Nations Segment

8:35 AM

Enter United Nations via security checkpoint

9:00 AM
Introduction and Tours:

LOCATION:
United Nations Building
1st Ave/43rd St

PRESENTATIONS:
Michael Adlerstein, United Nations

Anna Torriani, Atelier Pagnamenta Torriani

Stephan Freid, Skanska USA

11:45 AM
Closing Brunch and Annual Meeting:

LOCATION:
Hudson Hotel Roof Terrace
Hudson Hotel, 24th Floor

PANEL DISCUSSION:
Moderator:
Lance Jay Brown, Lance Jay Brown Architecture + Urban Design

Stan Allen, Stan Allen Architect, George Dutton '27 Professor of Architecture at Princeton University

Vishaan Charkrabarti, SHoP Architects

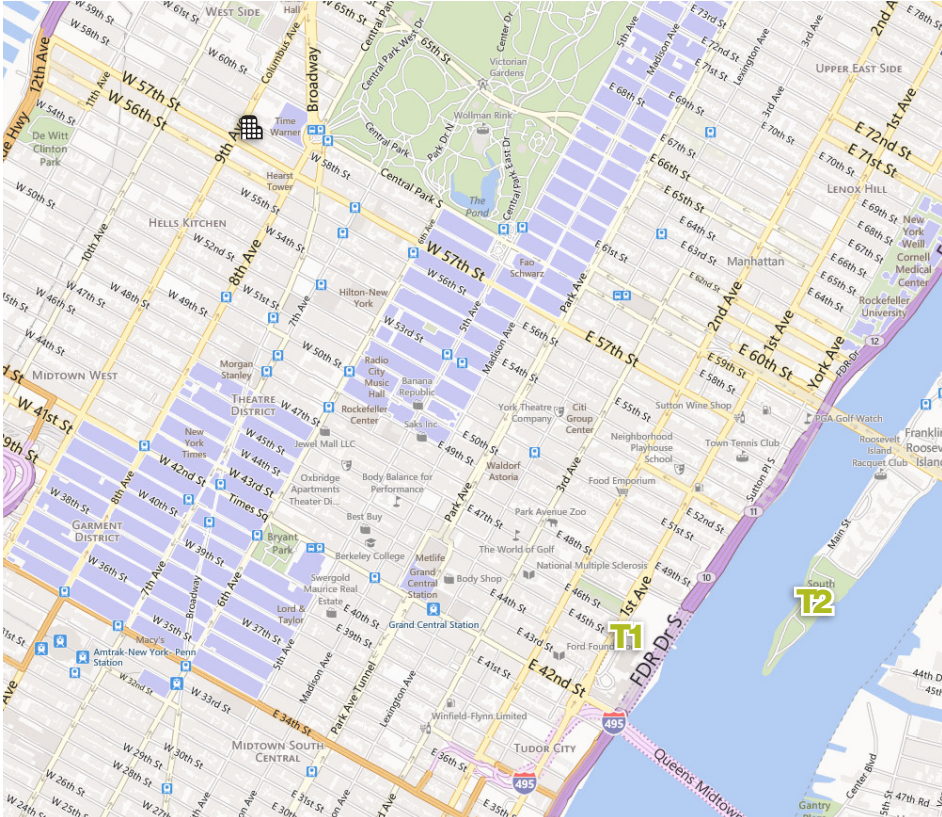
Susan Chin, Design Trust for Public Space


1:30 PM

A Country of Cities book signing with Vishaan Chakrabarti

2:00 PM
Add-On Tour:

LOCATION:
FDR Four Freedoms Park
Roosevelt Island Southern Tip w/ Gina Pollara



 The Hudson Hotel
T1 United Nations Building
T2 FDR Four Freedoms Park



The United Nations

The recently completed five-year long renovation project at the headquarters of the United Nations increases security, integrates sustainable systems and restores historically significant details. The \$2.1B renovation was overseen by Michael Adlerstein, the Assistant Secretary General of the UN and Executive Director of the UN Capital Master Plan. The International Style campus was originally designed by Le Corbusier and Oscar Niemeyer in the 1950's. The prominent 39 story Secretariat building now has all new blast-proof glazing

interspersed with photovoltaic cells. The upper floors of office space received a complete overhaul to reflect today's modern workplace. Other spaces, such as the General Assembly and Security Council Chamber, received a light touch. The general character of the rooms and hierarchal arrangement appear untouched, but sophisticated lighting, mechanical systems and technology upgrades bring them into the 21st century.

(2015) EYP, HLW, and Helpert
 Photo top left: Mark Garten
 Photo right: CMP
 Photo left: Jenna M. McKnight





Franklin D. Roosevelt Four Freedoms Park

Located on the southern tip of Roosevelt Island, the park serves as a monument to Franklin D. Roosevelt and celebrates the four freedoms he articulated in the 1941 State of the Union address. It was designed by Louis Kahn in 1972, but only just completed in 2012 due to funding issues. The project was carried through by Mitchell Giurgola Architects, who stayed true to the original design, except to raise the entire site 15" to accommodate a 5" rise in the East River since the 1970's. The four acre park was conceived by Kahn as a garden and a room. The symmetrical,

triangular shape of the memorial and forced perspective toward the water feels inspired by naval architecture, a nod to FDR's love for the sea. It extends and narrows out into the East River and offers breathtaking views of the United Nations, Brooklyn Bridge and Statue of Liberty. The weight of the granite hardscape surrounding the gently sloped lawn is lightened by the double row of little leaf linden trees. The southernmost point of the memorial, or the room, blurs the line between architecture and abstract art, much like his work at the Salk Institute.



(2012) Kahn and Mitchell | Giurgola
Photos: Paul Warchol

Optional Tour Sites & Dining Recommendations

OTHER ATTRACTIONS

[1] 100 11th Avenue

Jean Nouvel
Chelsea
11th Ave @ 19th St

[2] 40 Bond

Herzog & De Meuron
NoHo
Bond St b/w Bleeker and Bowary

[3] 41 Cooper Square

Morphosis
East Village
3rd Ave b/w 6th and 7th St

[4] Leonard Street Apt Bldg

Herzog & De Meuron
Tribeca
56 Leonard St @ Church St

[5] 8 Spruce Street

Frank Gehry
Financial District
Spruce @ Williams St

[6] Apple Store

Bohlin Cywinski Jackson
Columbus Circle
767 Fifth Ave @ 57th St

[7] Barclay's Center

SHoP Architects
Park Slope, Brooklyn
Atlantic Ave / Flatbush Ave

[8] Brooklyn Botanic Garden

Weiss/Manfredi
Prospect Heights, Brooklyn
Washington Ave / President St

[9] Brooklyn Bridge Park

Van Valkenburg Associates
DUMBO, Brooklyn
Water St / Old Fulton St

[10] David Zwirner Gallery

Seldorf Architects
Chelsea
537 W 20th St @ 11th Ave

[11] Hearst Tower

Foster + Partners
Columbus Circle
8th Ave b/w 56th and 57th St

[12] IAC Headquarters

Frank Gehry
Chelsea
11th Ave @ 18th St

[13] Morgan Library

Renzo Piano
Midtown East
Madison Ave b/w 36th and 37th St

[14] New Museum

SANAA
Lower East Side
Bowary @ Price St

[15] NY Times Building

Renzo Piano
Midtown West
8th Ave b/w 40th and 41st St

[16] Pier 15 & East River Esplanade

SHoP Architects
East Village
East River Dr / Fletcher St

[17] Prospect Park LeFrak Center

Tod Williams Billie Tsien Architects
Prospect Park, Brooklyn
Prospect Park, East Drive

[18] Queens Museum

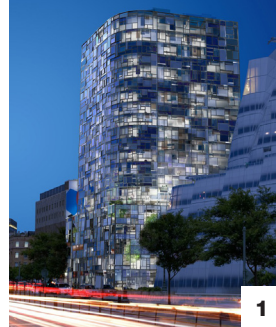
Grimshaw
Flushing Meadows, Queens
Flushing Meadows Corona Park

[19] TKTS Booth

Perkins Eastman
Times Square
Broadway / 47th St

AIA Boat Tour

See website for time and tour options: cfa.aiany.org



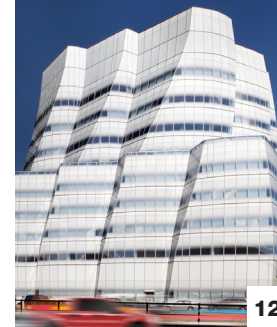
1



5



9



12



15



16



17



2



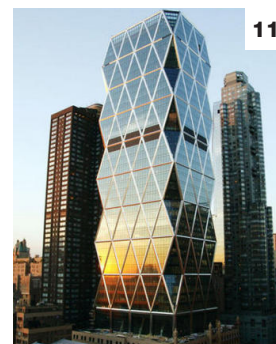
6



10



13



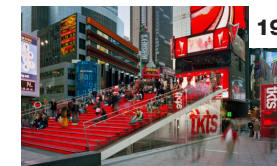
11



14



18



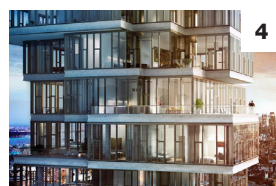
19



3



7



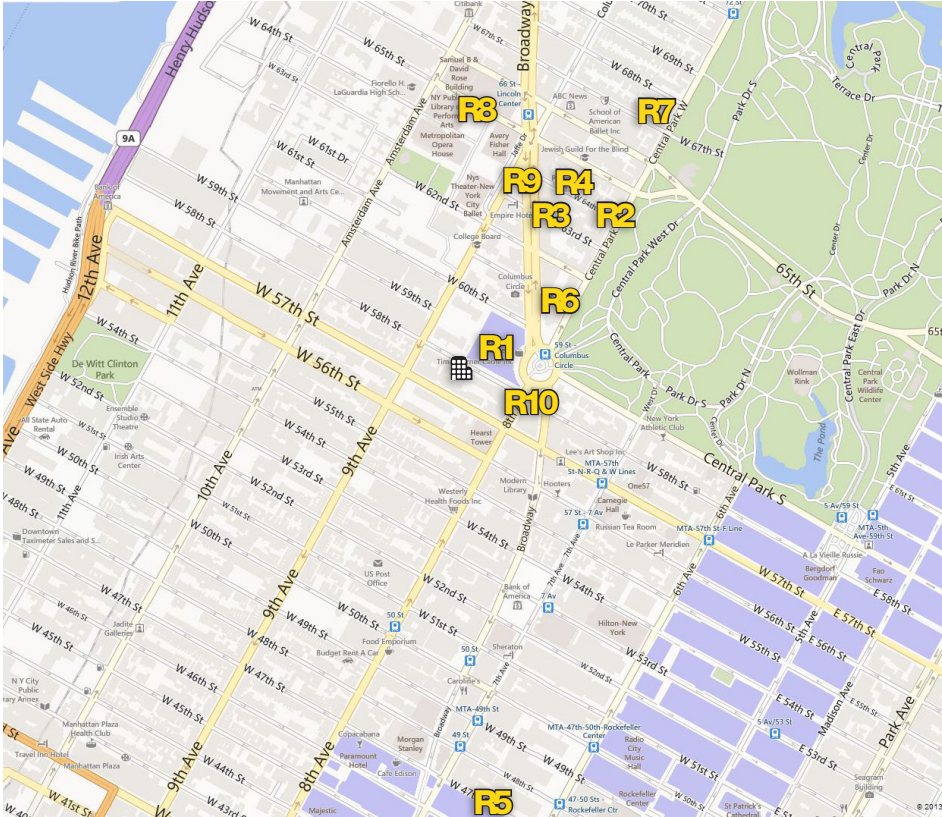
4




8

DINING RECOMMENDATIONS

Asiate Time Warner Center	80 Columbus Cir, #35 5 th Floor (212) 805.8881	Jean George Restuarant Trump Tower	1 Central Park West (212) 299.3900
Atlantic Grill Lincoln Center	49 West 64 th St (212) 787.4663	The Leopard @ des Artistes	1900 Broadway @ 64 th St (212) 595.0303
Bar Boulud	20 West 64 th St (212) 595.1313	Lincoln Ristorante Lincoln Center	142 West 65 th St (212) 359.6500
Boulud Sud	1 West 67 th St (212) 787.8767	The Smith Restaurant and Bar	1900 Broadway @ 63 rd St (212) 496.5700
Haven Rooftop Bar Sanctuary Hotel	132 West 47 th St (212) 466.9000	Robert Restaurant Museum of Arts and Design	2 Columbus Cir, 9 th Floor (212) 299.7730



-  The Hudson Hotel
- R1** Asiate
- R2** Atlantic Grill
- R3** Bar Boulud
- R4** Boulud Sud
- R5** Haven Rooftop Bar
- R6** Jean Georges Restaurant
- R7** The Leopard @ des Artistes
- R8** Lincoln Ristorante
- R9** The Smith
- R10** Robert Restaurant