



**The American
Institute
of Architects**

Academy of
Architecture for Health
an AIA Knowledge Community

Creating Healthy Communities

People Own What They Help Create



April 13, 2021



Craig Passey, AIA ACHA, VP and Health Studio Leader - SmithGroup
John Swagert, MD, CEO - Mountain Park Health Center



**The American
Institute
of Architects**

Academy of
Architecture for Health
an **AIA** Knowledge Community

Creating Healthy Communities

People Own What They Help Create

April 13, 2021

Craig Passey, AIA ACHA, VP and Health Studio Leader - SmithGroup
John Swagert, MD, CEO - Mountain Park Health Center





The American
Institute
of Architects

Academy of
Architecture for Health
an AIA Knowledge Community

Outside the Box

The Academy's multi-channel on-line approach provides emerging professionals, journeymen, and master professionals with convenient and economical opportunities to develop their chosen area of interest.

Outside The Box (OTB) Series sessions provide to a broad audience, perspectives on healthcare, community health, environmental and design issues outside the customary domain of healthcare design practice.



**The American
Institute
of Architects**

Academy of
Architecture for Health

an **AIA** Knowledge Community

Copyright Notice

This presentation is protected by US and International Copyright laws. Reproduction, distribution, display and use of the presentation without written permission of the speaker is prohibited.

© The American Institute of Architects 2021



**The American
Institute
of Architects**

Academy of
Architecture for Health
an AIA Knowledge Community

Compliance Statement

“AIA Knowledge” is a Registered Provider with The American Institute of Architects Continuing Education Systems (AIA/CES). Credit(s) earned on completion of this program will be reported to AIA/CES for AIA members. Certificates of Completion for both AIA members and non-AIA members are available upon special request.

This program is registered with AIA/CES for continuing professional education. As such, it does not include content that may be deemed or construed to be an approval or endorsement by the AIA of any material of construction or any method or manner of handling, using, distributing, or dealing in any material or product.



**The American
Institute
of Architects**

Academy of
Architecture for Health
an AIA Knowledge Community

AIA/ CES Reporting Details

Your CES credits from this event will be automatically reported given your engaged attendance during the entire event today.

If you are watching in a group setting and have multiple people in the room, please make sure the person who registered for the course, includes your name and AIA member number in their post webinar survey.

We encourage all registrants to fill out the post webinar survey. Your feedback is important and informs us of future webinar topics to better meet listener needs.



**The American
Institute
of Architects**

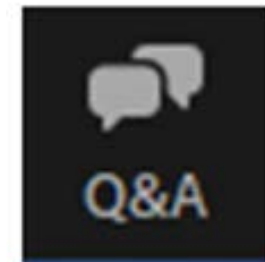
Academy of
Architecture for Health
an AIA Knowledge Community

Questions

Submit a question to the moderator via the Q&A tool at the bottom of your screen.

Content-related questions will be answered during the Q&A portion, at the end of the presentation, as time allows. Any questions not answered during Q&A will be answered and posted online within two (2) weeks.

Tech support questions will be answered by AIA staff promptly.





**The American
Institute
of Architects**

Academy of
Architecture for Health
an **AIA** Knowledge Community

Craig Passey, AIA, ACHA
VP and Health Studio (Phoenix) Leader/ SmithGroup

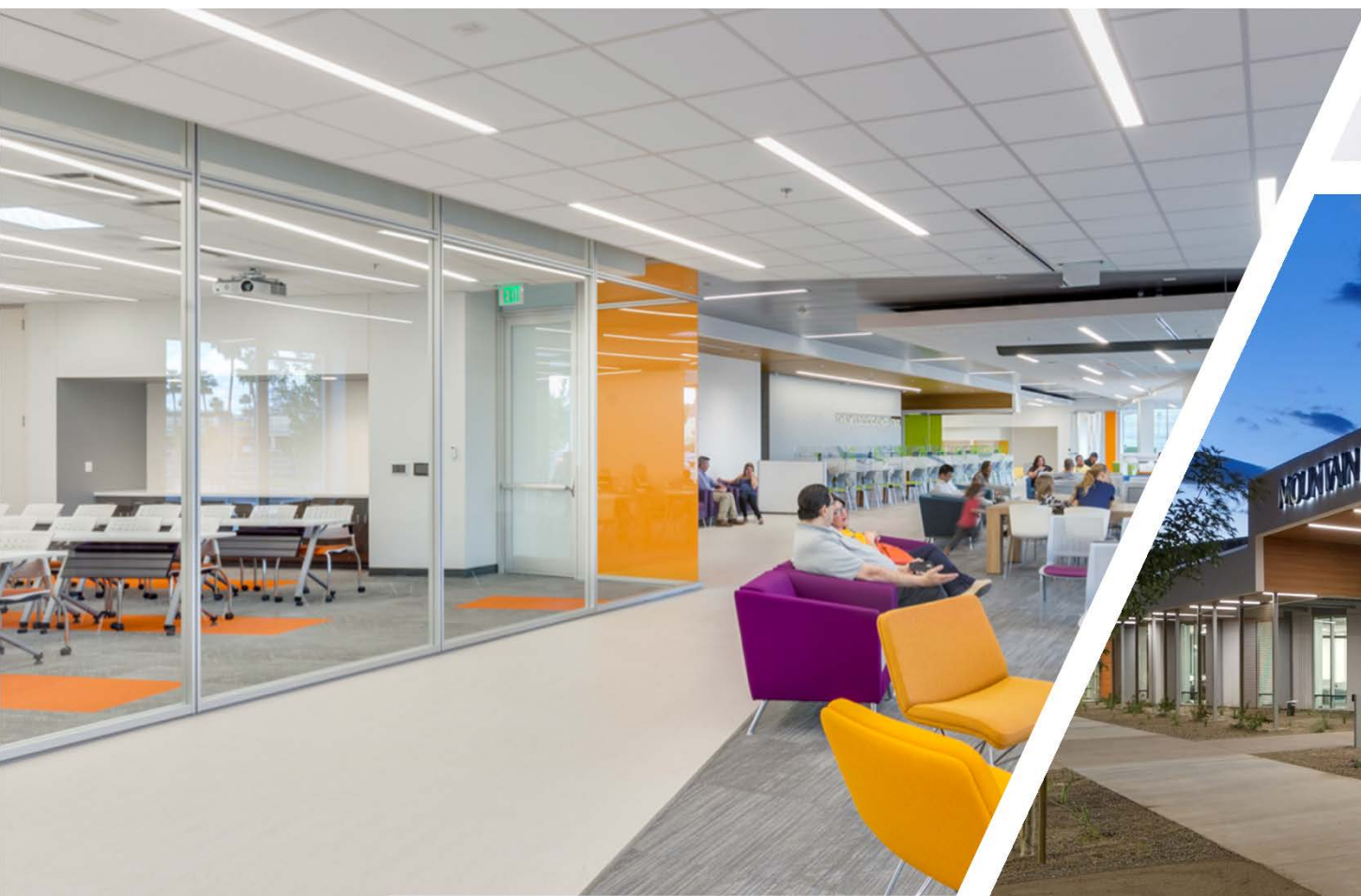


John Swagert, M.D.
CEO/ Mountain Park Health Center





Imagine if you will...



THE ROLE OF COMMUNITY HEALTH CENTERS

AKA FEDERALLY QUALIFIED HEALTH CENTERS (FQHC)



FUNDING SOURCES & PROGRAMS

FEDERALLY QUALIFIED HEALTH CENTERS



QUALIFICATION REQUIREMENTS

FEDERALLY QUALIFIED HEALTH CENTERS



AFFORDABLE, QUALITY HEALTHCARE

MOUNTAIN PARK HEALTH CENTER



40 Years



Improve
Community
Health



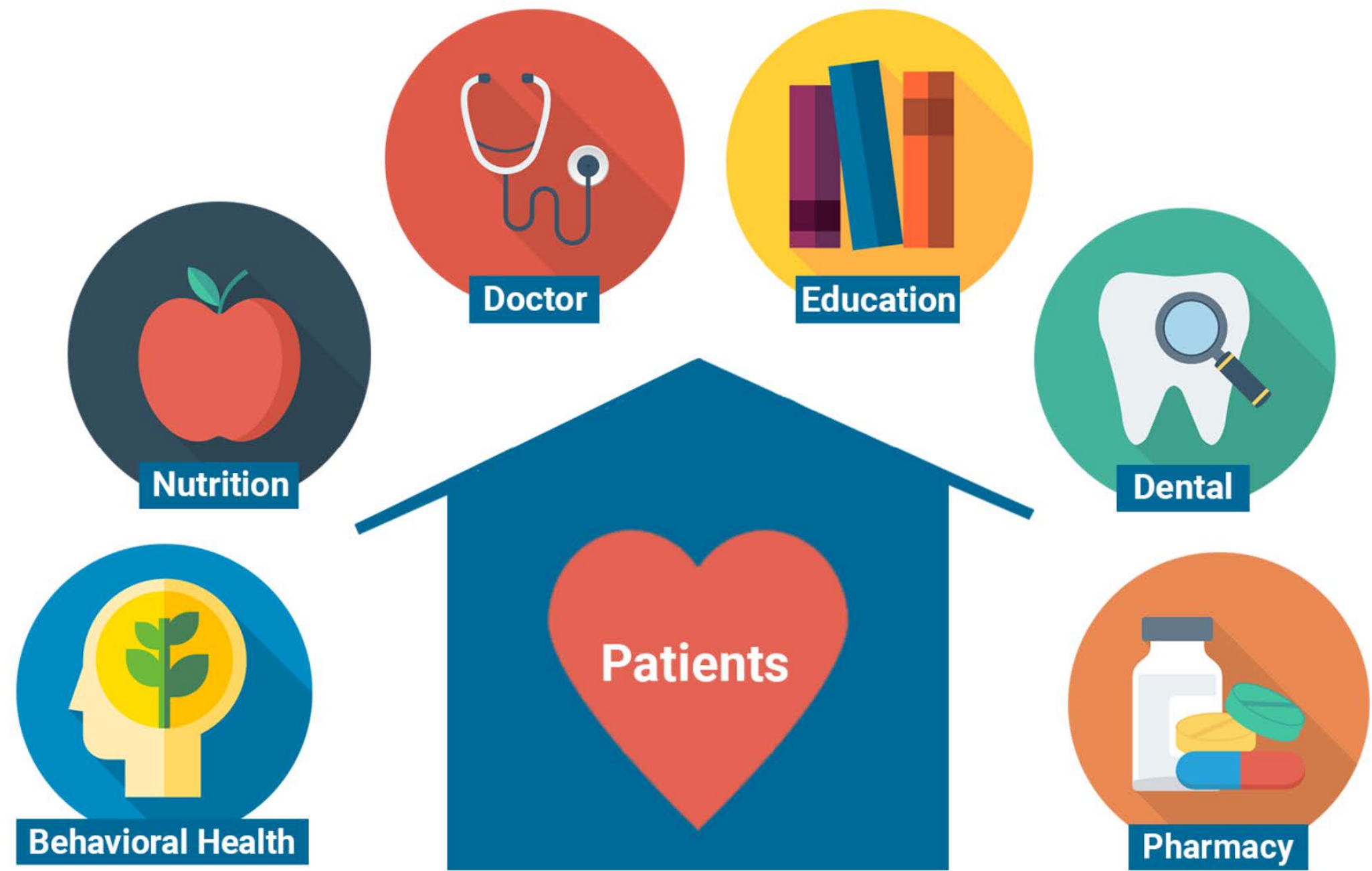
90,000
Patients



8 Clinics

MOUNTAIN PARK HEALTH CENTER

PATIENT-CENTERED HOME MODEL



MOUNTAIN PARK HEALTH CENTER

ONE-STOP SHOP CARE



PEDIATRICS



WOMEN’S HEALTH



INTERNAL/ FAMILY MEDICINE



LAB & PHARMACY



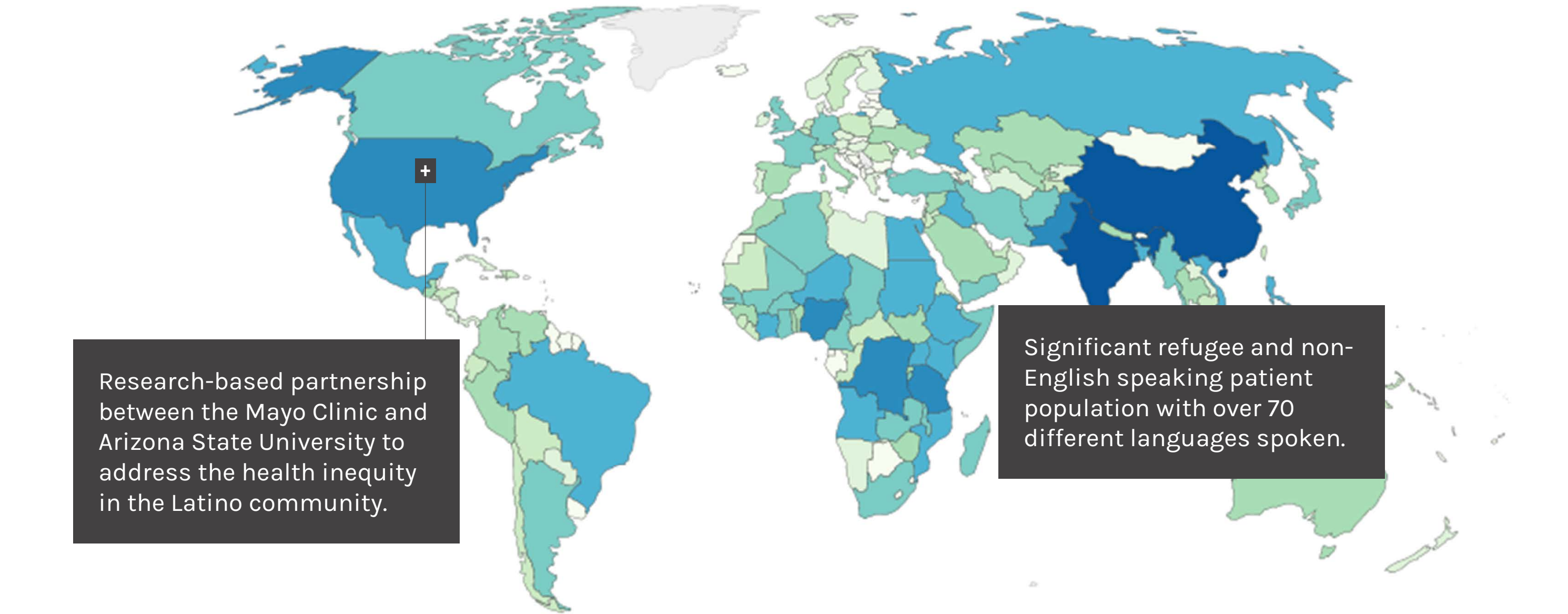
DENTAL



WOMEN, INFANT, & CHILDREN (W.I.C.)

MOUNTAIN PARK HEALTH CENTER

PATIENT DIVERSITY

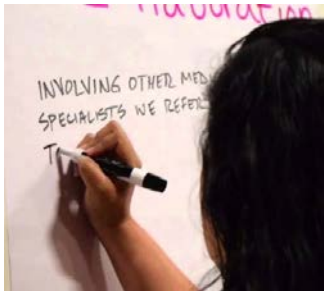


Research-based partnership between the Mayo Clinic and Arizona State University to address the health inequity in the Latino community.

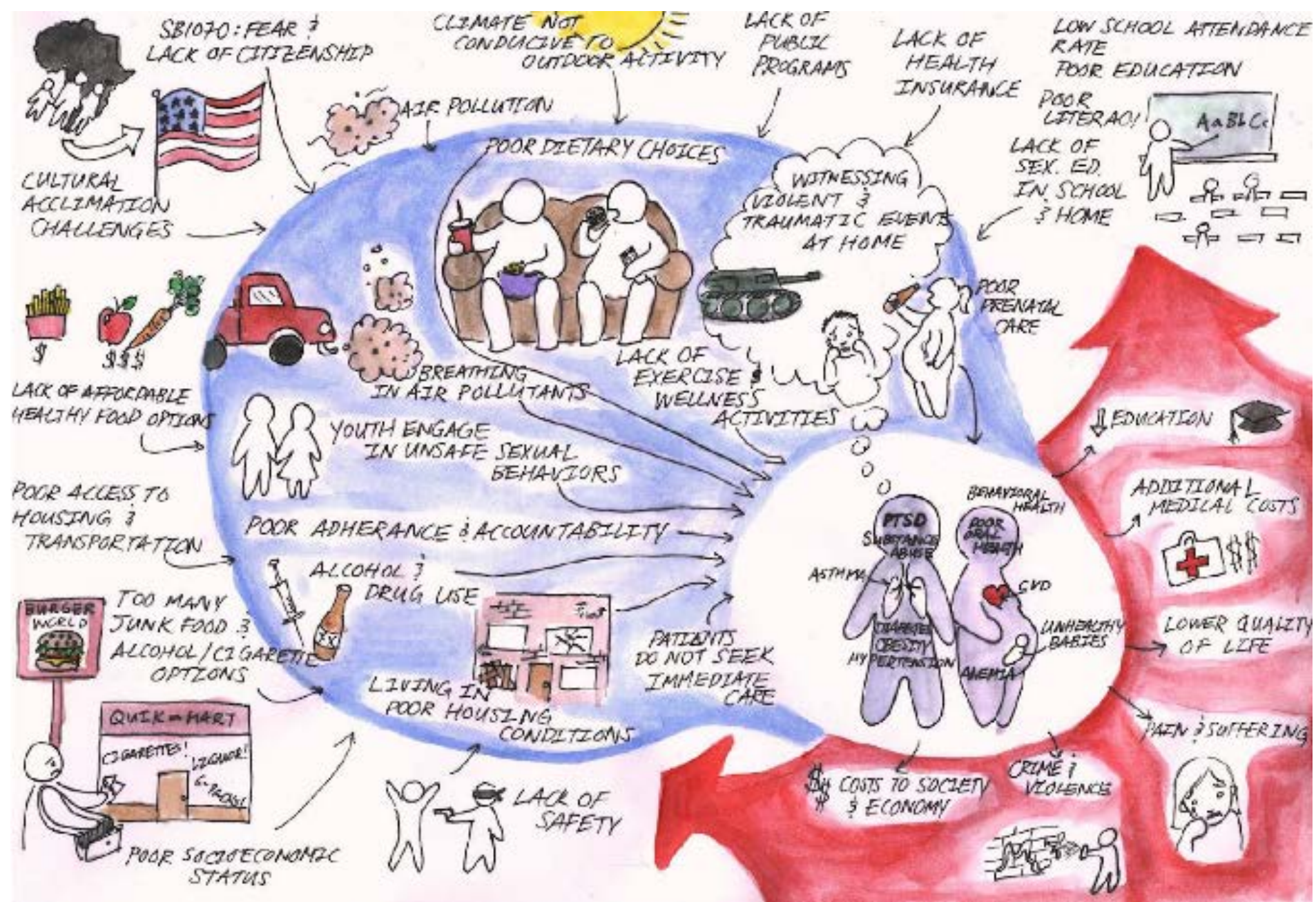
Significant refugee and non-English speaking patient population with over 70 different languages spoken.

IT TAKES A VILLAGE

STAKEHOLDER ENGAGEMENT

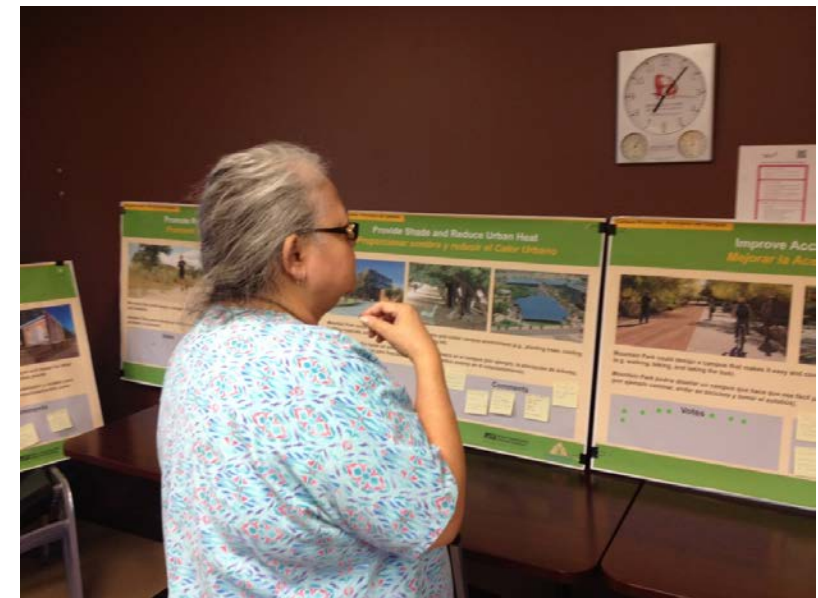


VISIONING- DIVERSITY COUNCIL



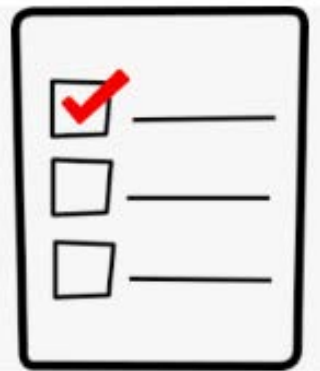
VISIONING- FOCUS GROUPS & TOWN HALL MEETINGS

- Focus Groups
 - Service
 - Place
 - Experience
- Town Hall Meetings
 - Enhance Access
 - Shade
 - Recreation
 - Engage all ages
 - Gathering Space
 - Beautify Tempe



VISIONING- STAFF ENGAGEMENT

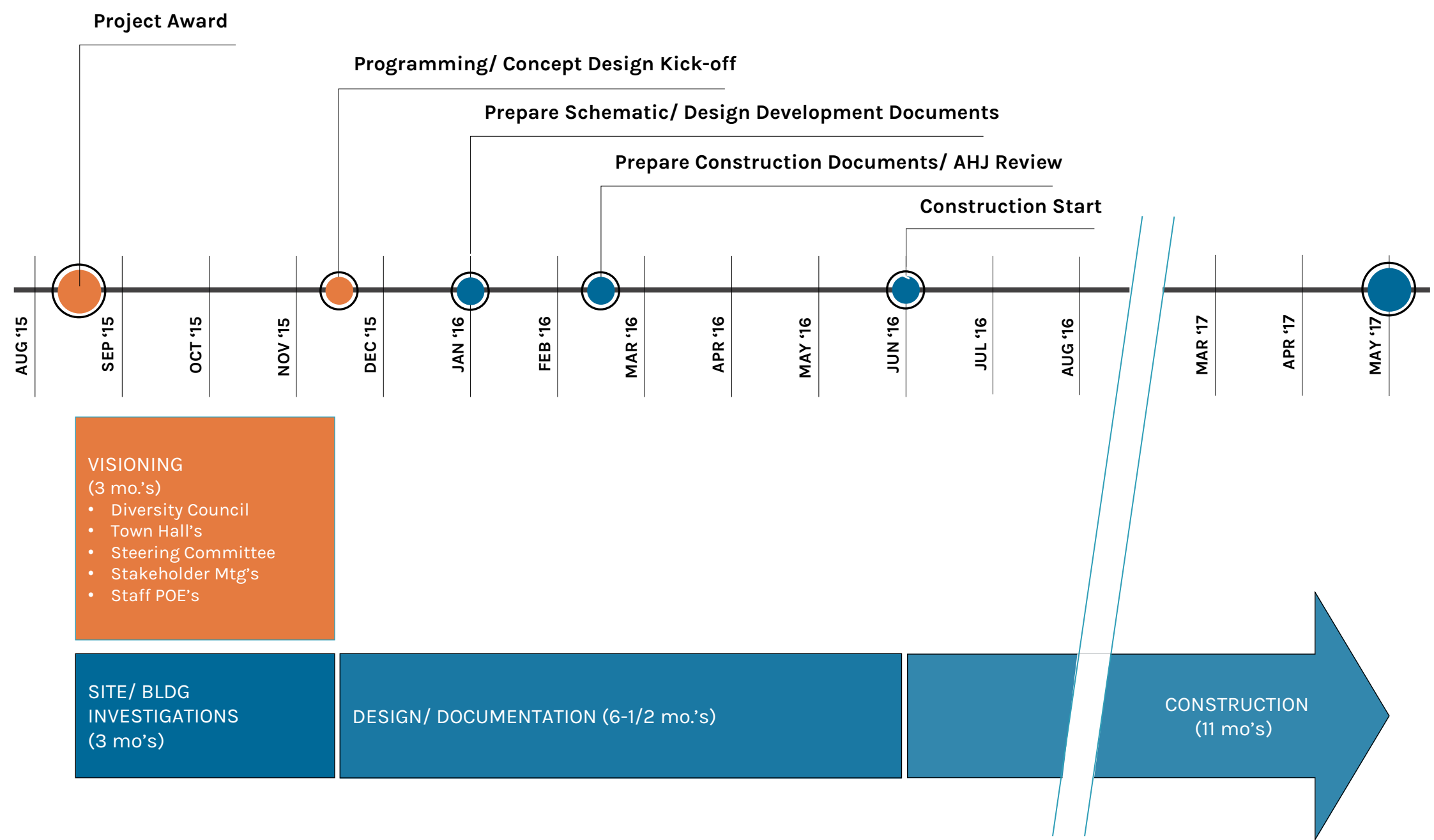
- POE's, Surveys, and Round Table Discussions
 - Work Spaces
 - Staff Amenities
 - Improved Flow
 - Security
 - Patient Support



| Item | Overall Rank | Rank Distribution | Score | No. of Rankings |
|---|--------------|-------------------|-------|-----------------|
| Improved patient experience | 1 | | 266 | 42 |
| Maximize Clinical Efficiency, improve facility organization | 2 | | 223 | 42 |
| Nursing and staff satisfaction | 3 | | 219 | 41 |
| UMC as a premier Academic Medical Center | 4 | | 209 | 42 |
| Facility replacement and /or repair | 5 | | 206 | 41 |
| All Private Patient Rooms | 6 | | 163 | 41 |
| Upgraded Image - the WOW factor | 7 | | 138 | 42 |
| Expanded community presence with multiple sites | 8 | | 89 | 40 |

Lowest Rank Highest Rank

COMMUNITY INPUT DRIVEN SCHEDULE



“A VISUAL EXPRESSION OF HEALTH”

PROJECT OBJECTIVES



Support Growth



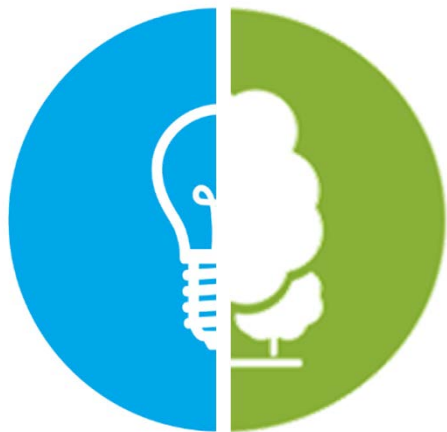
Multigenerational



Community Asset



Municipality Alignment



Indoor/ Outdoor



Sustainable Strategies



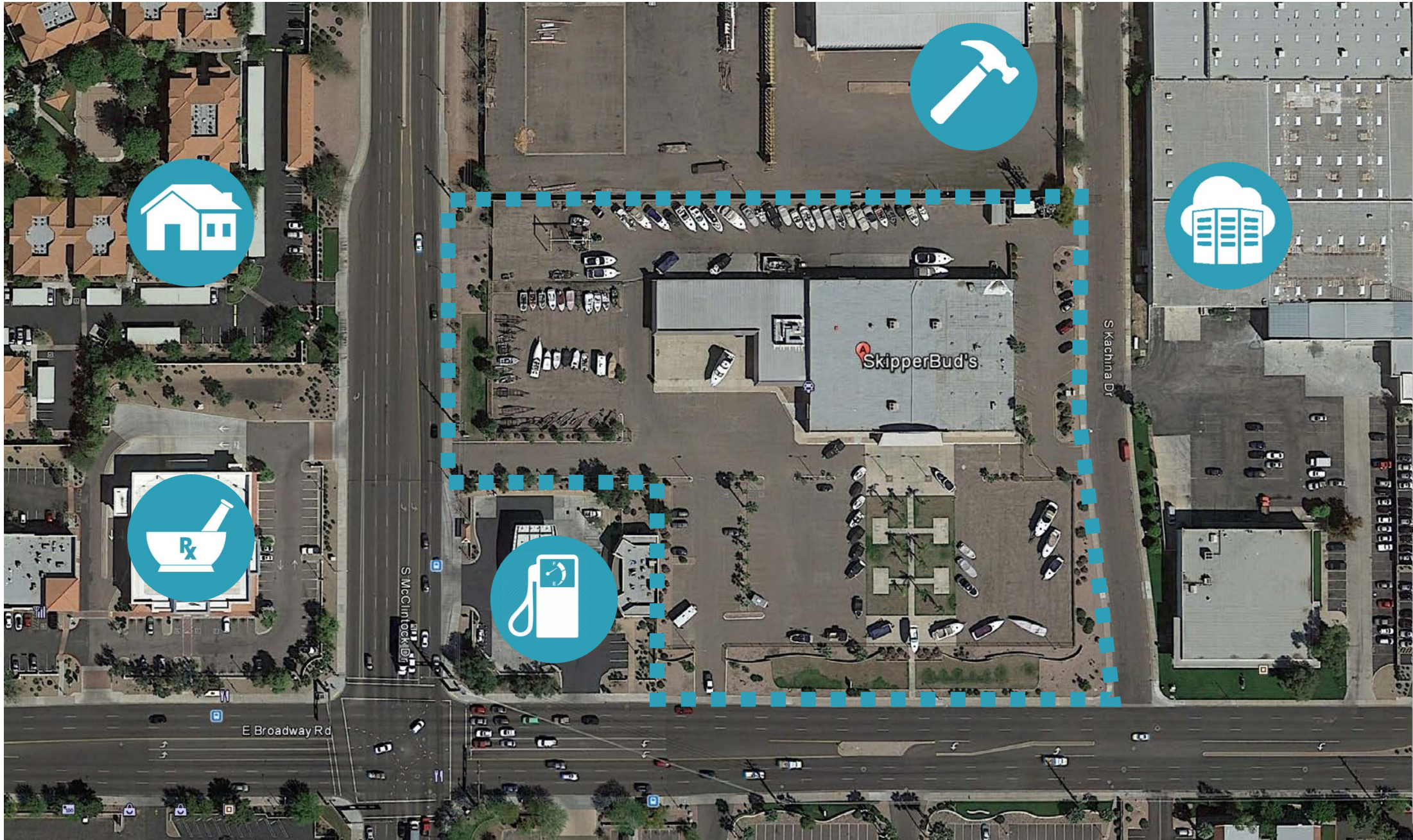
Patient Dignity



Promote Wellness

ADAPTIVE RE-USE

SKIPPERBUD'S BOAT DEALERSHIP



SITE DEVELOPMENT PROGRAMMING

Solar parking field

Boxed tree nursery

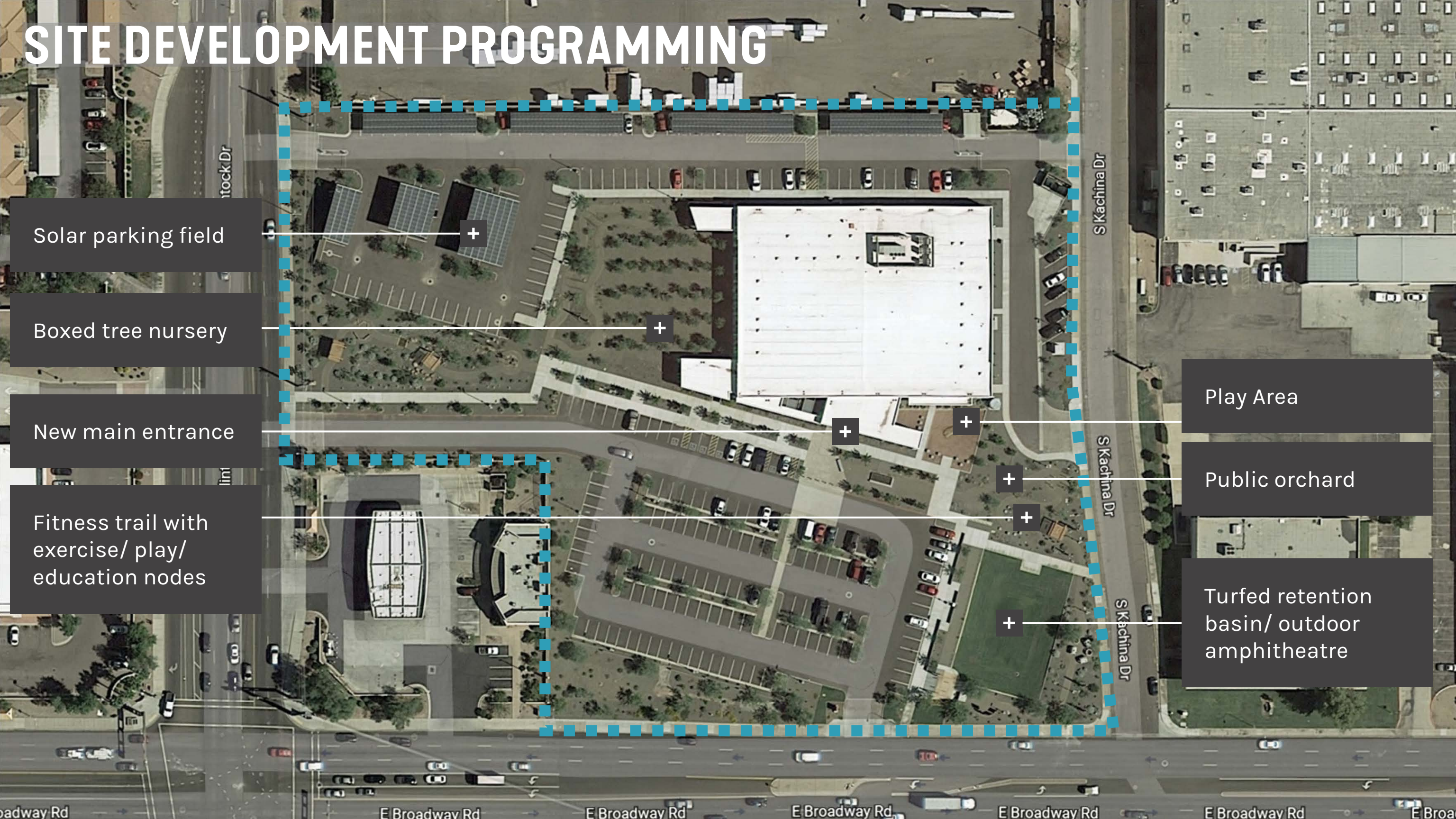
New main entrance

Fitness trail with
exercise/ play/
education nodes

Play Area

Public orchard

Turfed retention
basin/ outdoor
amphitheatre



ACTIVATING THE SITE TO SUPPORT WELLNESS



ACTIVATING THE SITE TO SUPPORT EDUCATION & SUSTAINABILITY

Children's DNA climbing structure.

Rainwater collection cistern to irrigate citrus orchard available for public consumption



Rainwater collection cistern to irrigate citrus orchard available for public consumption

ACTIVATING THE SITE TO PROMOTE “COMMUNITY”

MOVIES IN THE PARK



CLINIC ORGANIZATION



INDOOR/ OUTDOOR CONNECTION

View of main entrance pick-up/ drop-off.



View of play area





MOUNTAIN PARK HEALTH CENTER

ROUTE 60

mcclintock drive

baseline road

rural rd

10



**The American
Institute
of Architects**

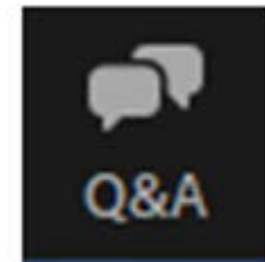
Academy of
Architecture for Health
an AIA Knowledge Community

Questions

Submit a question to the moderator via the Q&A tool at the bottom of your screen.

Content-related questions will be answered during the Q&A portion, at the end of the presentation, as time allows. Any questions not answered during Q&A will be answered and posted online within two (2) weeks.

Tech support questions will be answered by AIA staff promptly.

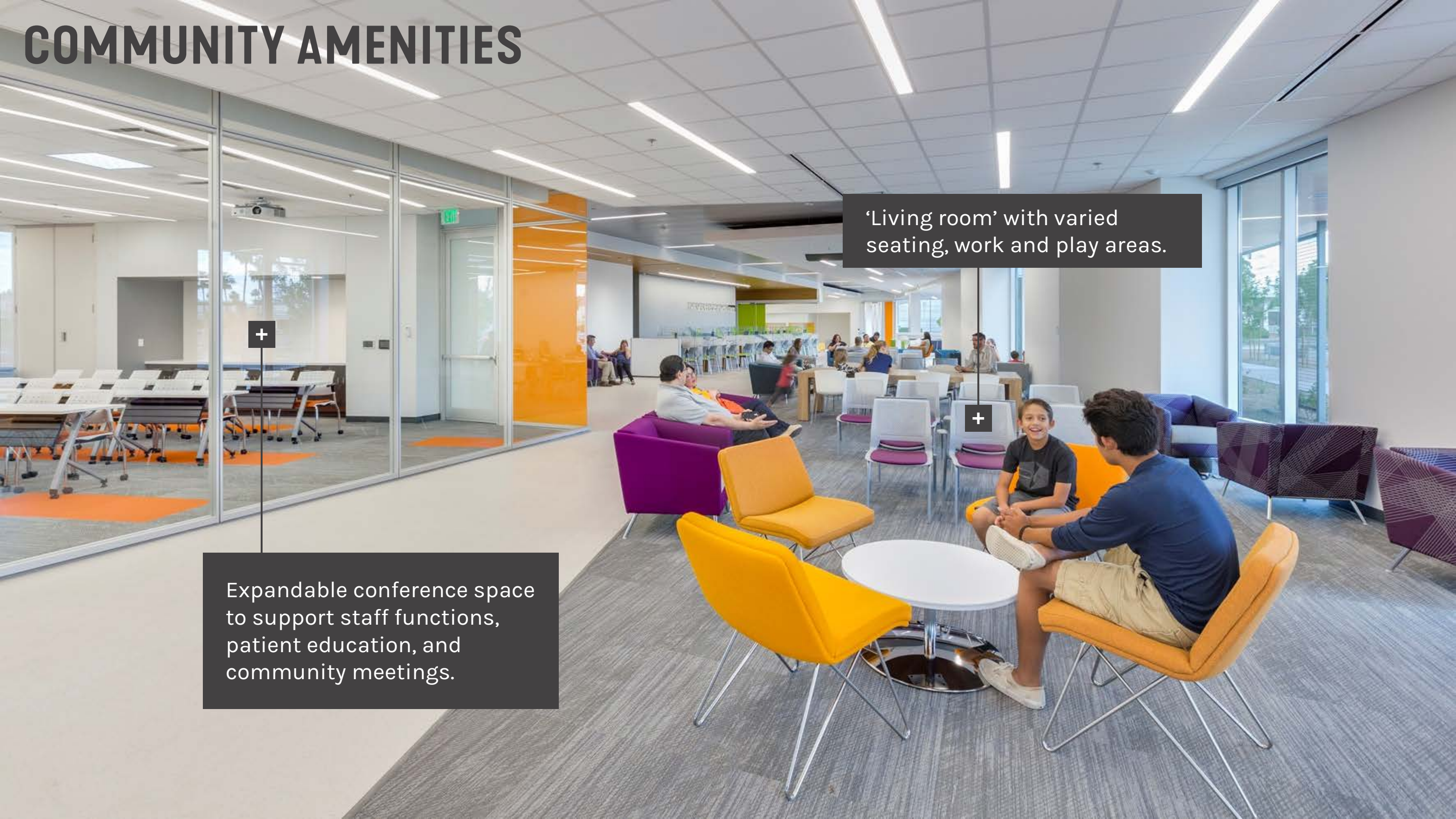


COMMUNITY AMENITIES

‘Living room’ with varied seating, work and play areas.

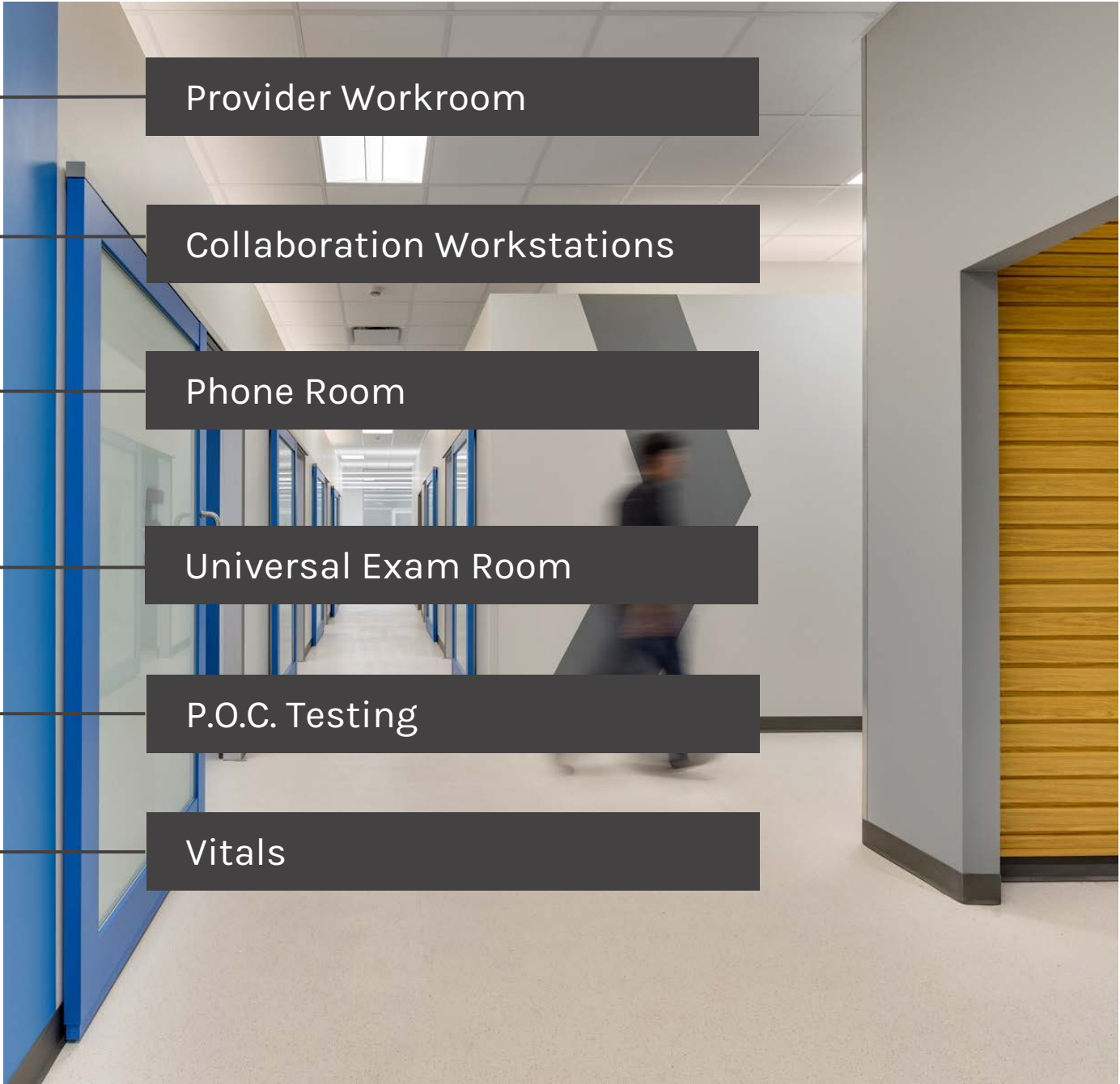
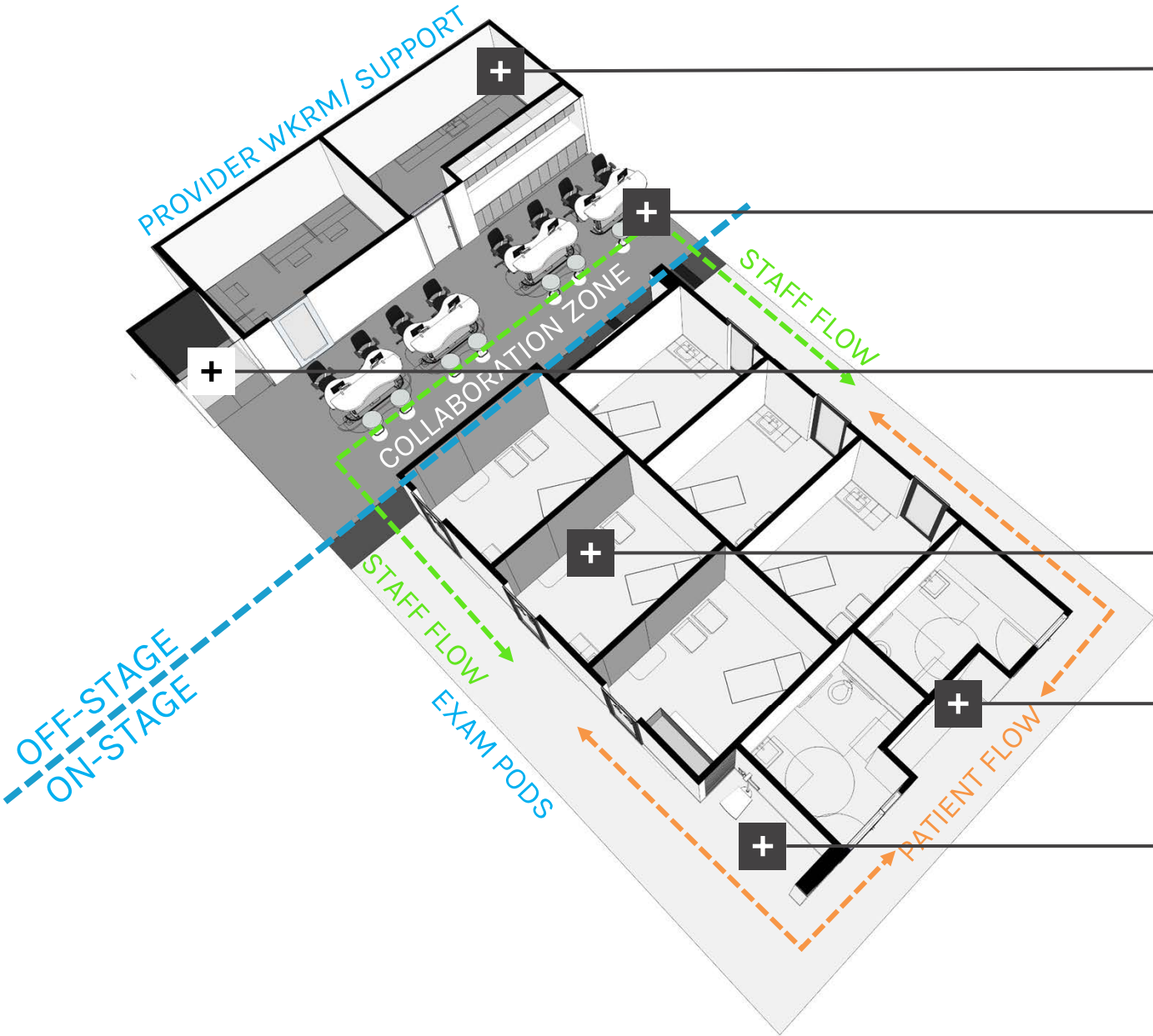
+
Expandable conference space to support staff functions, patient education, and community meetings.

+



TYPICAL CLINIC POD

ON-STAGE/ OFF-STAGE MODEL



Provider Workroom

Collaboration Workstations

Phone Room

Universal Exam Room

P.O.C. Testing

Vitals

ON-STAGE/ OFF-STAGE CLINIC POD

Core workspaces, open collaboration and common areas promote team interaction.

Patient circulation segregated from staff circulation/team work space.



CLINIC ORGANIZATION

Color assigned to each Clinic pod to support patient wayfinding.



Vitals stations and POC near clinic pod entry.



Super-graphics used to assist with patient circulation.



UNIVERSAL PATIENT ROOM

Height adjustable
Provider/ MA workstation.



Glass sliding door with
soft close function.



QUADRUPLE AIM

REACHING THE POTENTIAL OF A PATIENT-CENTRIC MODEL



STAFF AMENITIES





STAFF AMENITIES



STAFF AMENITIES

THE FUTURE OF FQHC'S

WHERE ARE THEY GOING & HOW CAN DESIGN PROFESSIONALS ASSIST





**The American
Institute
of Architects**

Academy of
Architecture for Health
an AIA Knowledge Community

Time for Questions and Comments





The American
Institute
of Architects

Academy of
Architecture for Health
an AIA Knowledge Community

CES Reminder

The URL to the webinar survey <https://www.research.net/r/AAH21LC03> will be emailed to you or the individual who registered your site.

The survey closes **Friday, April 16th** at 12:30am ET.

For questions, please email knowledgecommunities@aia.org



The American
Institute
of Architects

Academy of
Architecture for Health
an **AIA** Knowledge Community

Join the Academy of Architecture for Health

www.aia.org/aah

AIA KnowledgeNet

[AAH Home](#) [Discussion](#) [Library](#) [Blogs](#) [Events](#) [Directory](#) [Participate](#) [Communities](#)

search



Academy of Architecture for Health

an **AIA** Knowledge Community

[AAH Board/Committees](#) | [Components](#) | [Webinar Resources & Archives](#) | [Healthcare Design Awards](#) | [Pillars of Health Care Architecture](#) | [Member List](#) [Twitter](#) [LinkedIn](#)

Edit Carousel



INTERNATIONAL SUMMIT & EXHIBITION ON
HEALTH FACILITY PLANNING, DESIGN & CONSTRUCTION

MARCH 17-20, 2019 | PHOENIX, AZ

Join this knowledge community >

About the Academy

Announcements

Add

U40 List: Healthcare Design's Best Under 40 [Edit](#) [Share](#)

The U40 List is nomination oriented recognition to celebrate individuals making a significant contribution to the advancement of health facilities design. Each year up to two individuals will be selected to have their names added to the distinguished U40 List. The recipients will receive a travel stipend to attend the Summer Leadership



**The American
Institute
of Architects**

Academy of
Architecture for Health
an AIA Knowledge Community

Upcoming Webinars

| Date | Series | Topic |
|-----------|-----------------------|--|
| 5/11/2021 | Healthcare Essentials | Driving Diagnostic and Therapeutic Decisions: The Modern Clinical Laboratory |
| 6/8/2021 | Healthcare Essentials | Healthcare Parking: The First and Last Impression |
| 7/13/2021 | Beyond the Basics | Introduction to the International Association for Healthcare Security and Safety |

Dates & topics are subject to change