

Studio Dental II
San Francisco, California



SQFT
1400 DGSF
(130 m²)



OWNER/AFFILIATION
Studio Dental / Lowell
Caulder & Dr. Sara
Creighton



ARCHITECT(S)
Montalba Architects



COMPLETION DATE
2017



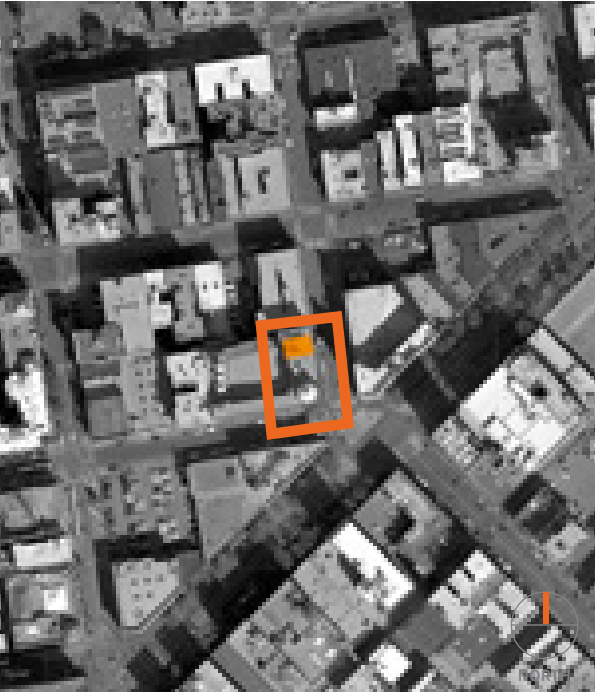
FRONT ELEVATION OF ENTRANCE



STYLISTIC SIGNAGE



ENTRANCE



SITE MAP

ABOUT | DESIGN INTENTIONS

Located on the ground floor of a historic building, the marriage of history and a **sleek, modern aesthetic creates a transcendent environment** that evokes a gallery. The design hinges on a **conceptual lantern** that from within the building's dark core **emanates luminosity and transparency**. Achieved through a series of wall panels that both light the building shell and brighten the storefront and street, **the lantern provides privacy while enlivening the community**.



TYPICAL OPERATORY

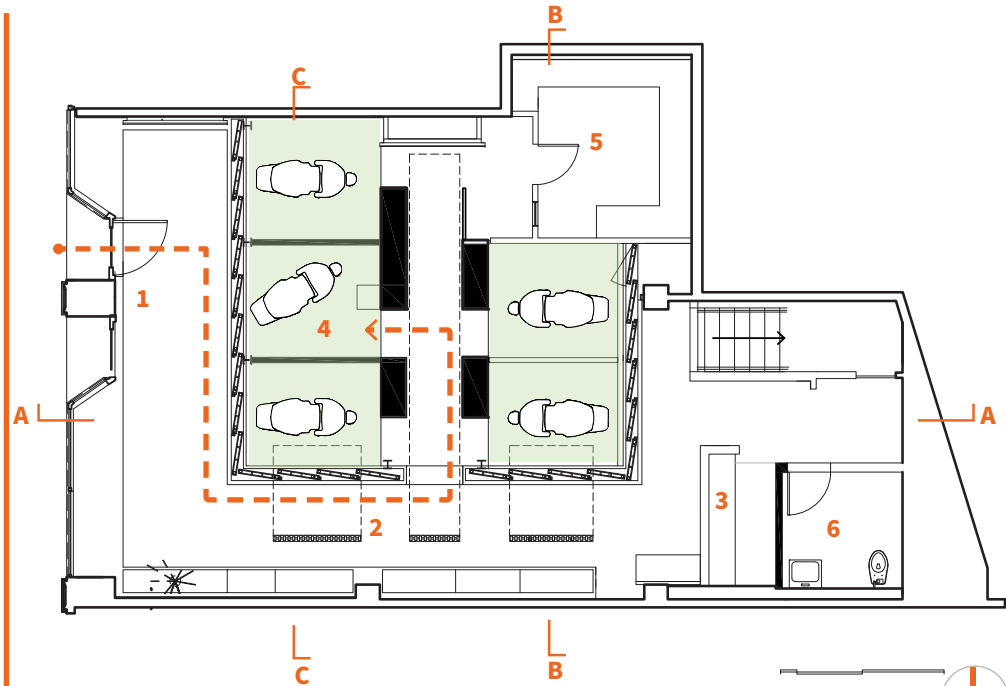
Studio Dental

San Francisco, California

The scope included the remodel of existing historical building includes foyer, reception, and open operatories divided with millwork, 'lanterns' and wood louvered screens. Situated within a rapidly developing neighborhood in San Francisco's financial district, Studio Dental's brick and mortar location is defined by a modern aesthetic, while honoring the historic elements of the base building. In place of a common waiting room, a park-like bench extends the length of the space. Vertical wood trellises provide separation between the bench and operator rooms without closing off the space. Moments of material contrast are introduced between the rough shell walls, smoked mirror panels, and a central colonnade of maple monoliths, which provide storage and define the entry to each private patient room. Monitors are provided overhead for patient viewing highlighting the verticality of the space within the lantern.

- Jury Comments:**
- This project was described as a gem.
 - It creates a gorgeous decompression setting for a **Zen like experience**.
 - It creates an environment that is outside of the everyday – it adds **sculptural, spatial drama** to something that is usually institutional.
 - The solution works well with the context, inserting a very modern, almost folly typology into the historic building.
 - The space **acts on multiple scales** – the plan is very concise with no slop in it, there is a **sense of care** throughout expressed in the detailing and simple materiality.
 - The project works from the street where it **carefully sets up the entry sequence**.
 - The interiors do not detract from the historic nature of the building.

FLOOR PLAN



KEY

1. Entry (138 SF)
2. Waiting Area (209 SF)
3. Reception (71 SF)
4. Operatory Room (54 SF)
5. Equipment Lab (110 SF)
6. Restroom (52 SF)

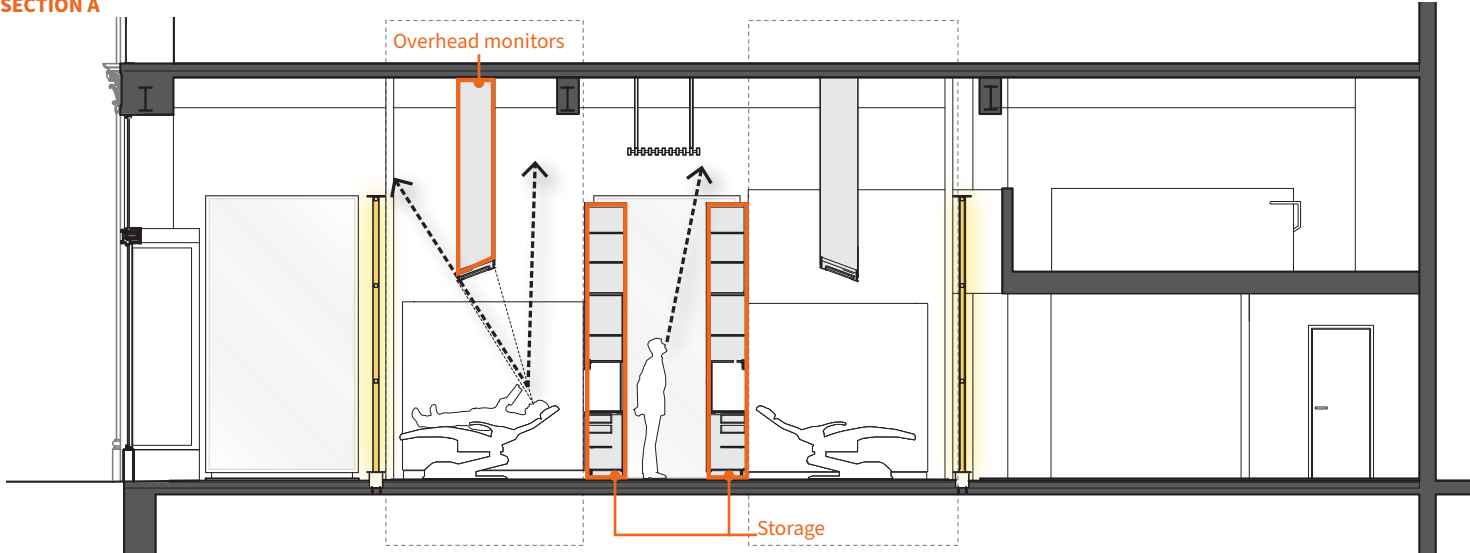
DEPARTMENTAL GROSS SQUARE FOOT TAKE-OFFS

	Net	Gross
Patient Care	273 SF	411 SF
Reception/Waiting/Entry	418 SF	419 SF
Staff Work Area	110 SF	110 SF
	810 SF	940 SF

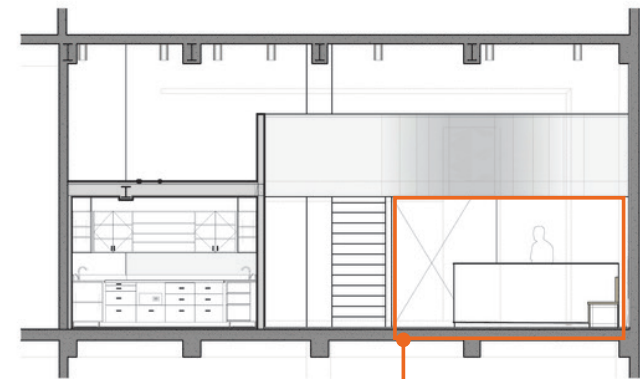
Grossing Factor: 1.16



SECTION A

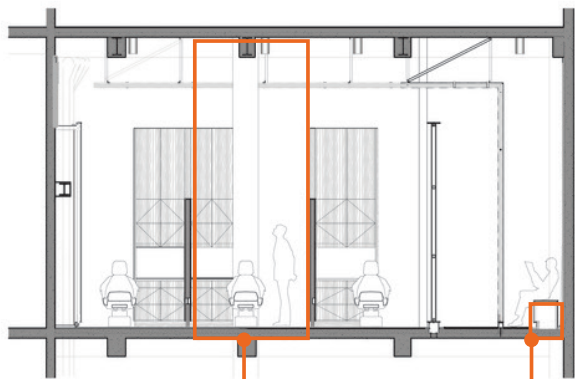


SECTION B



Registration desk

SECTION C



Operatory

Waiting bench

Studio Dental

San Francisco, California

NOTABLE FEATURES

Expansion of Space

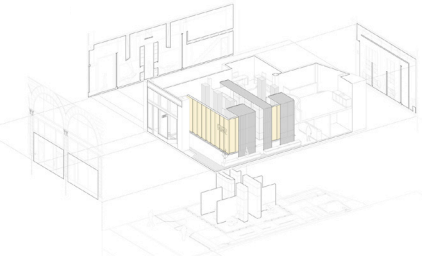
Wood trellises provide separation between the bench and operator rooms without closing of the space

Vertically Expressed

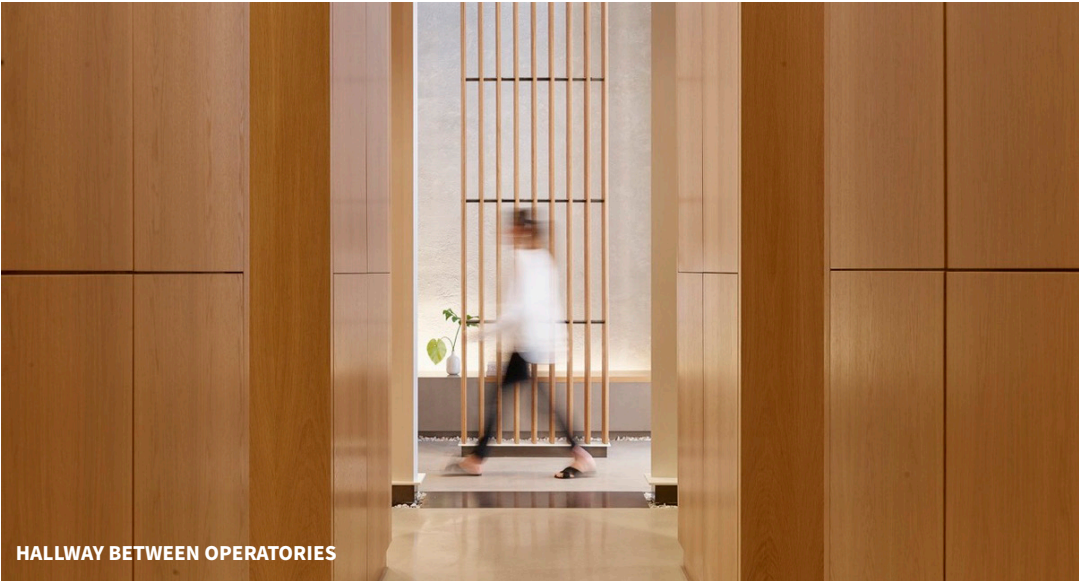
A control colonnade of maple monolithic monoliths serve as a function storage and define the entry to each private patient room

'Lantern'

Lit wood fins of the lantern provide privacy for patient while also illuminating the dark interior space and glowing through the storefront to brighten the street.



EXPLODED AXON OF INTERIOR COMPONENTS



HALLWAY BETWEEN OPERATORIES



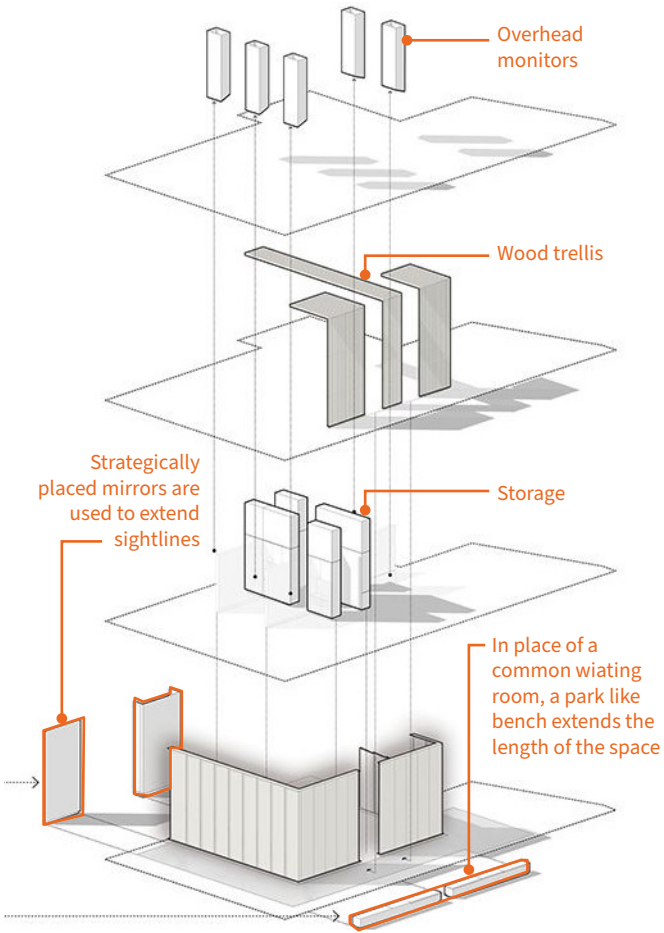
WOODEN PANELS



VIEW OF RECEPTION



TV SCREENS AS POSITIVE DISTRACTION



EXPLODED AXON OF INTERIOR COMPONENTS