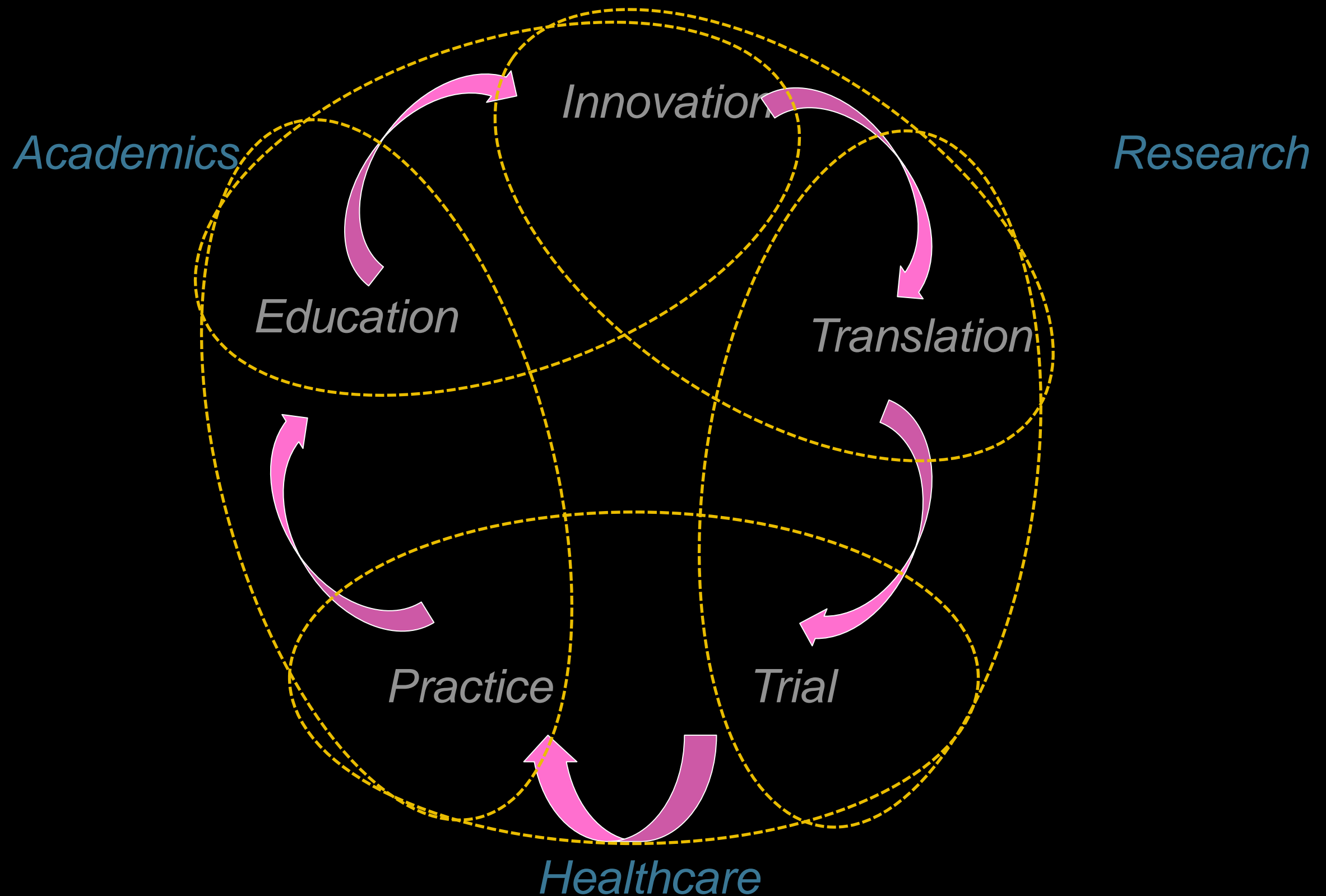


International Medical Campus at Kuala Lumpur International Airport

Vision

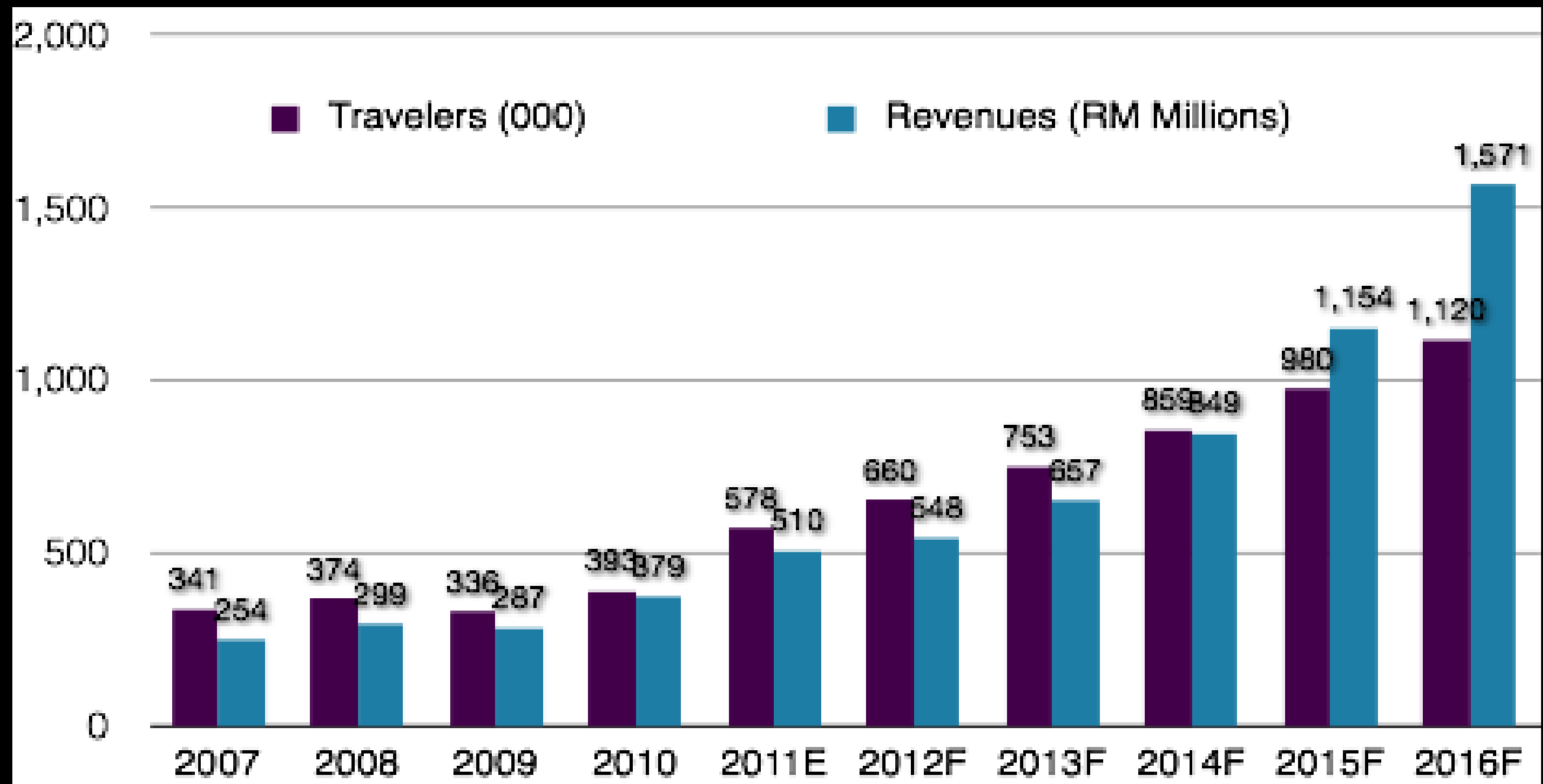
International Medical Campus – A Transformation



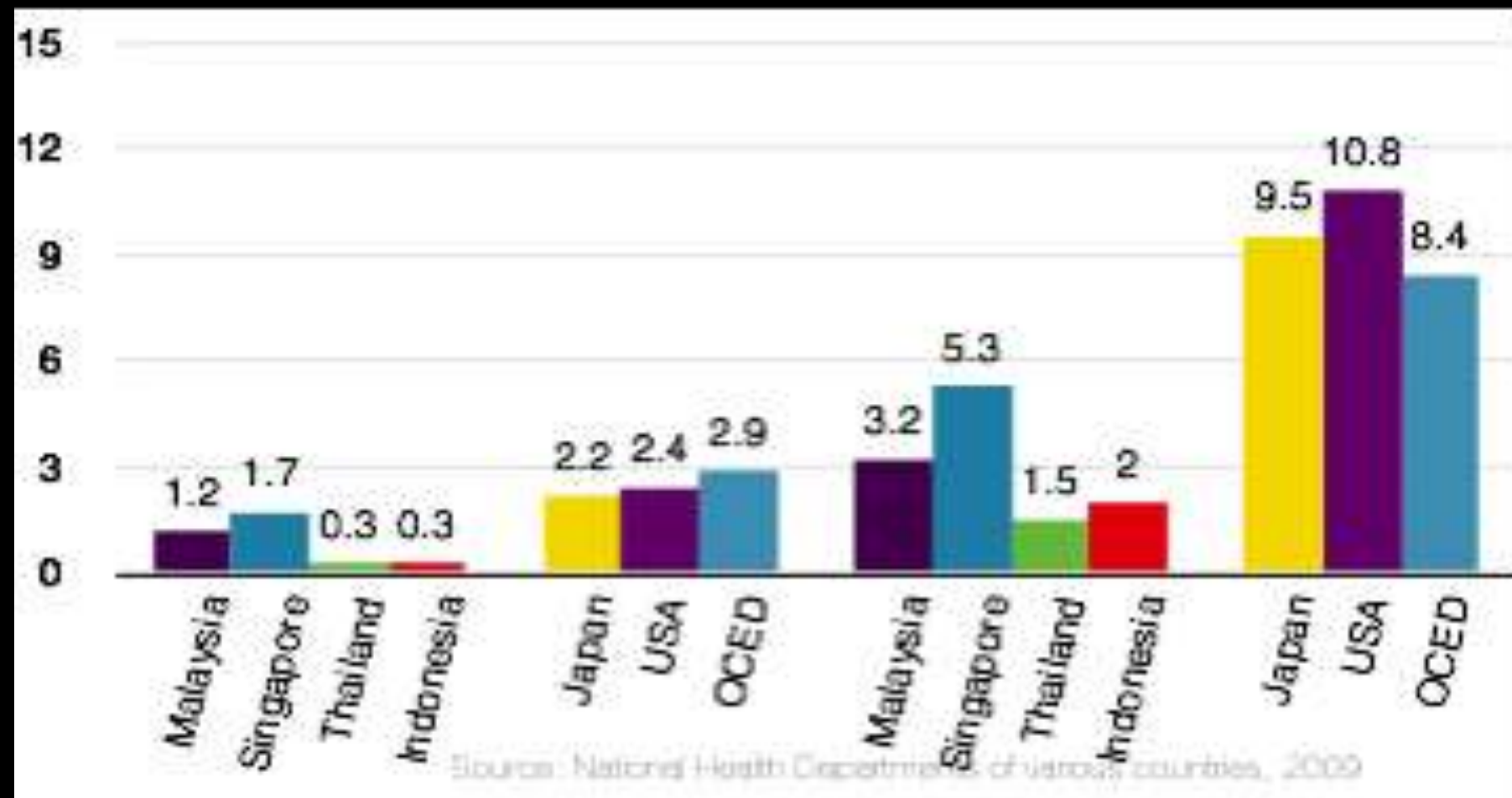
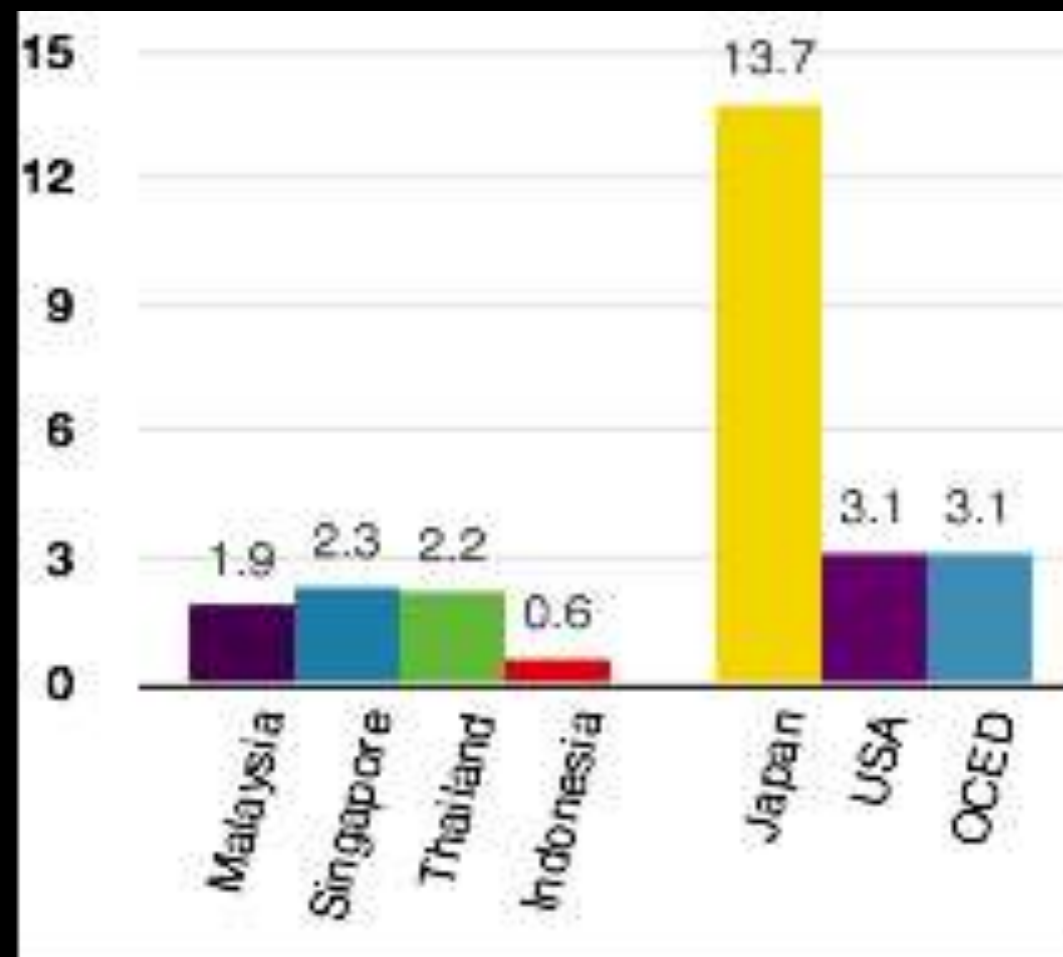


LATEST TECHNOLOGY

Malaysia Health Tourism Council Project:



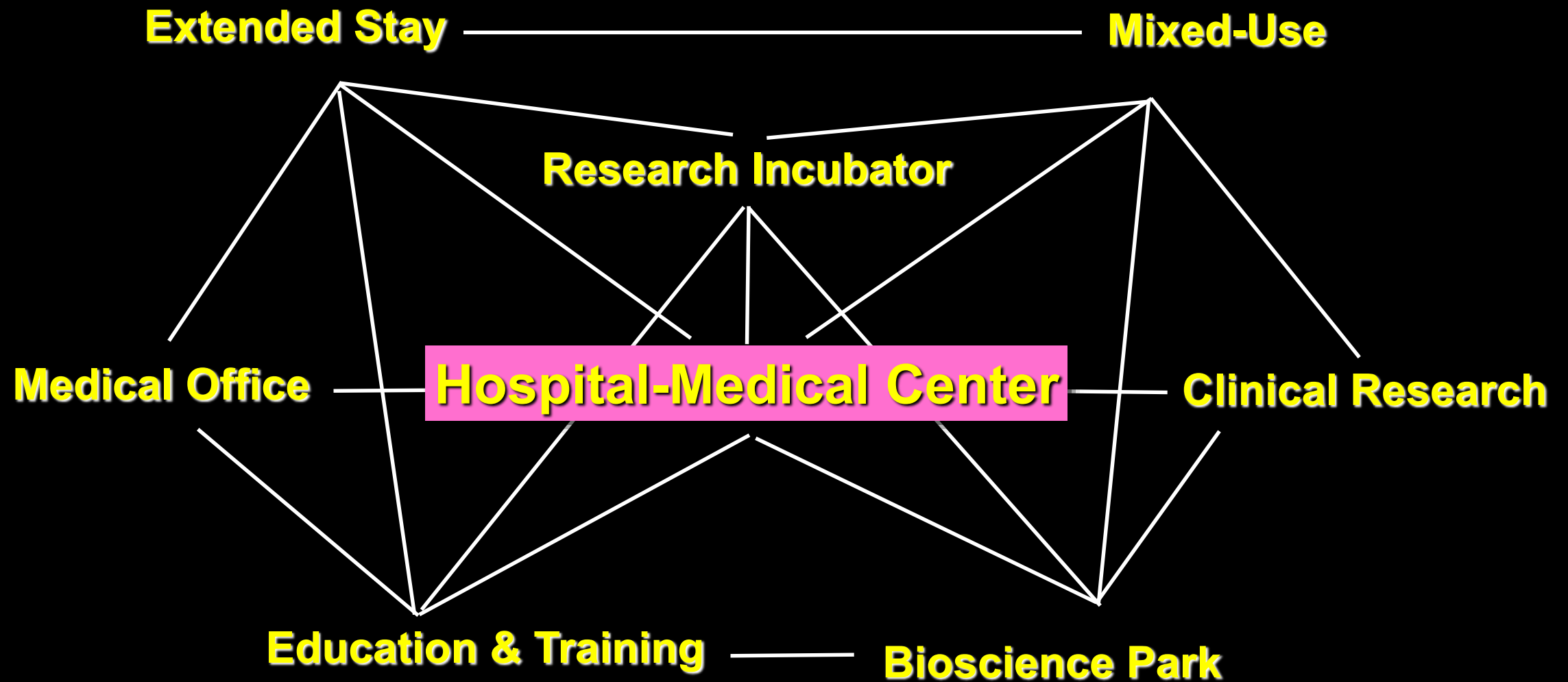
There is a shortage
of hospital beds
and doctors in
South East Asia





Concept Plan
International Medical Campus
Kuala Lumpur International Airport, Malaysia

- 
- A photograph of a modern medical campus. In the background, a large, multi-story building with a white facade and extensive blue-tinted glass windows stands under a clear blue sky. The building is partially framed by the dark green leaves of trees in the upper left. In the middle ground, a well-maintained green lawn stretches across the scene. To the right, there are more trees and a small, modern structure. In the foreground, a long, narrow water feature with multiple small fountains runs diagonally from the bottom left towards the center. The water is dark and reflects the surrounding environment. The overall atmosphere is clean, modern, and serene.
- World-Class Mixed-Use Medical Campus
 - Stimulate Medical & Health Science Commerce
 - State-of-the Art, Sustainable Buildings
 - Campus–Resort Environment
 - Integration with the KLIA Aeropolis





Mixed-Use

Extended Stay

Research Incubator

Medical Office

Clinical Research

Hospital-Medical Center

Bioscience Park

Education & Training



Moore's Cancer Center

Shiley Eye Center

Perlman Medical Offices

Jacobs Medical Center

Thornton Hospital

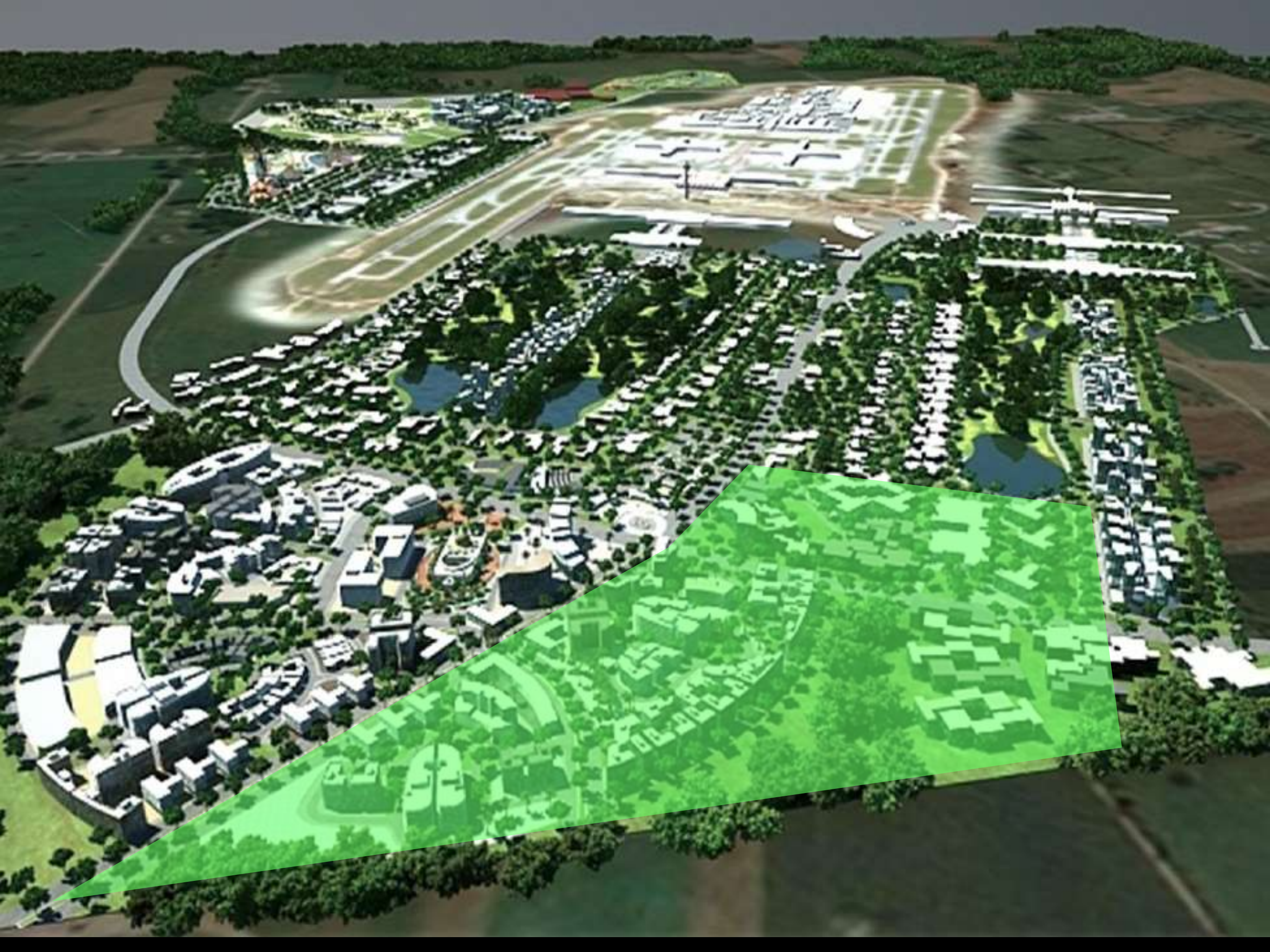
Sulpizio Cardiovascular Center

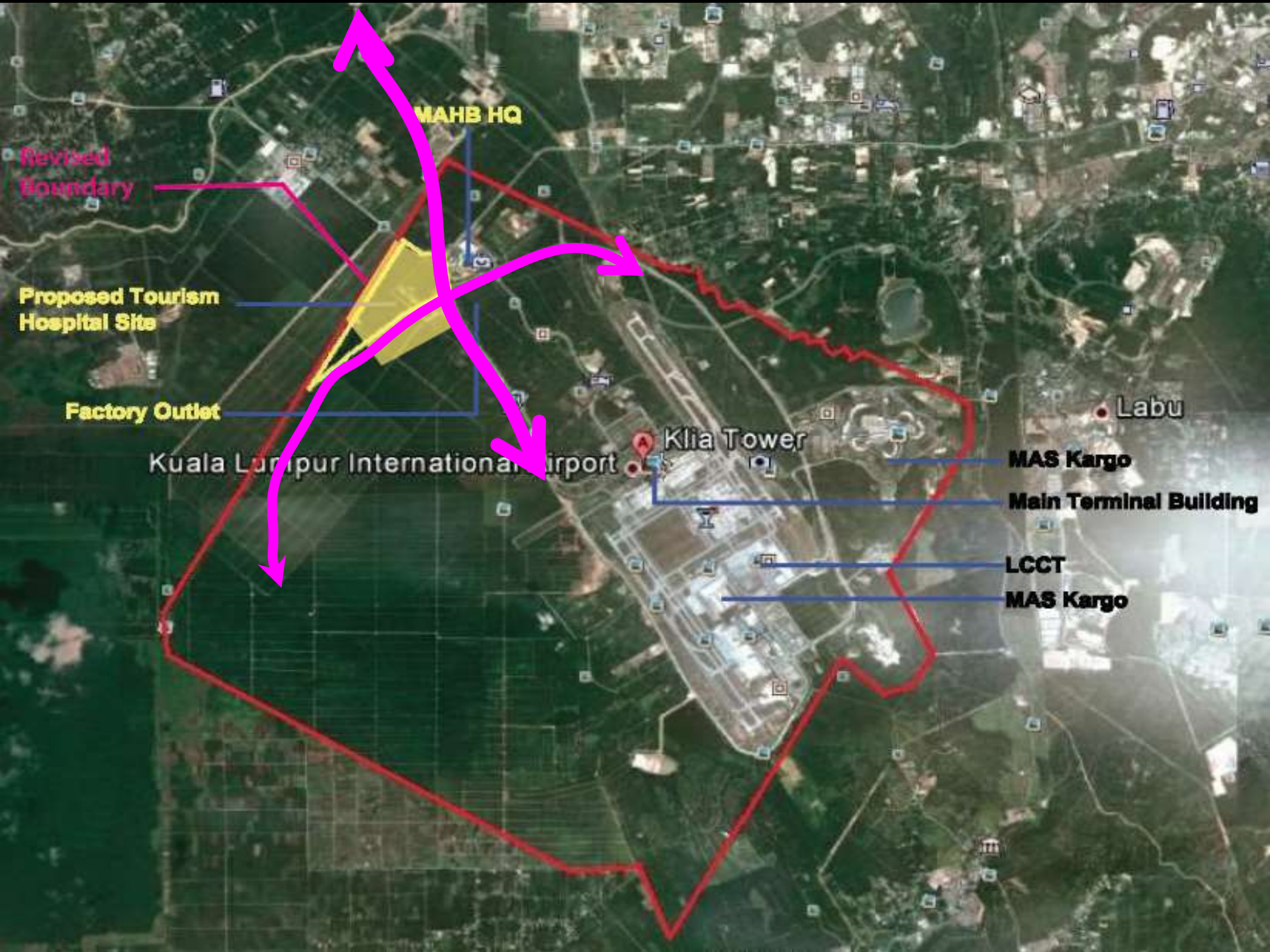
Medical Plaza

Parking Structure

**Altman Clinical and Translational
Research Institute**







MAHB HQ

Revised
Boundary

Proposed Tourism
Hospital Site

Factory Outlet

Kuala Lumpur International Airport

Klia Tower

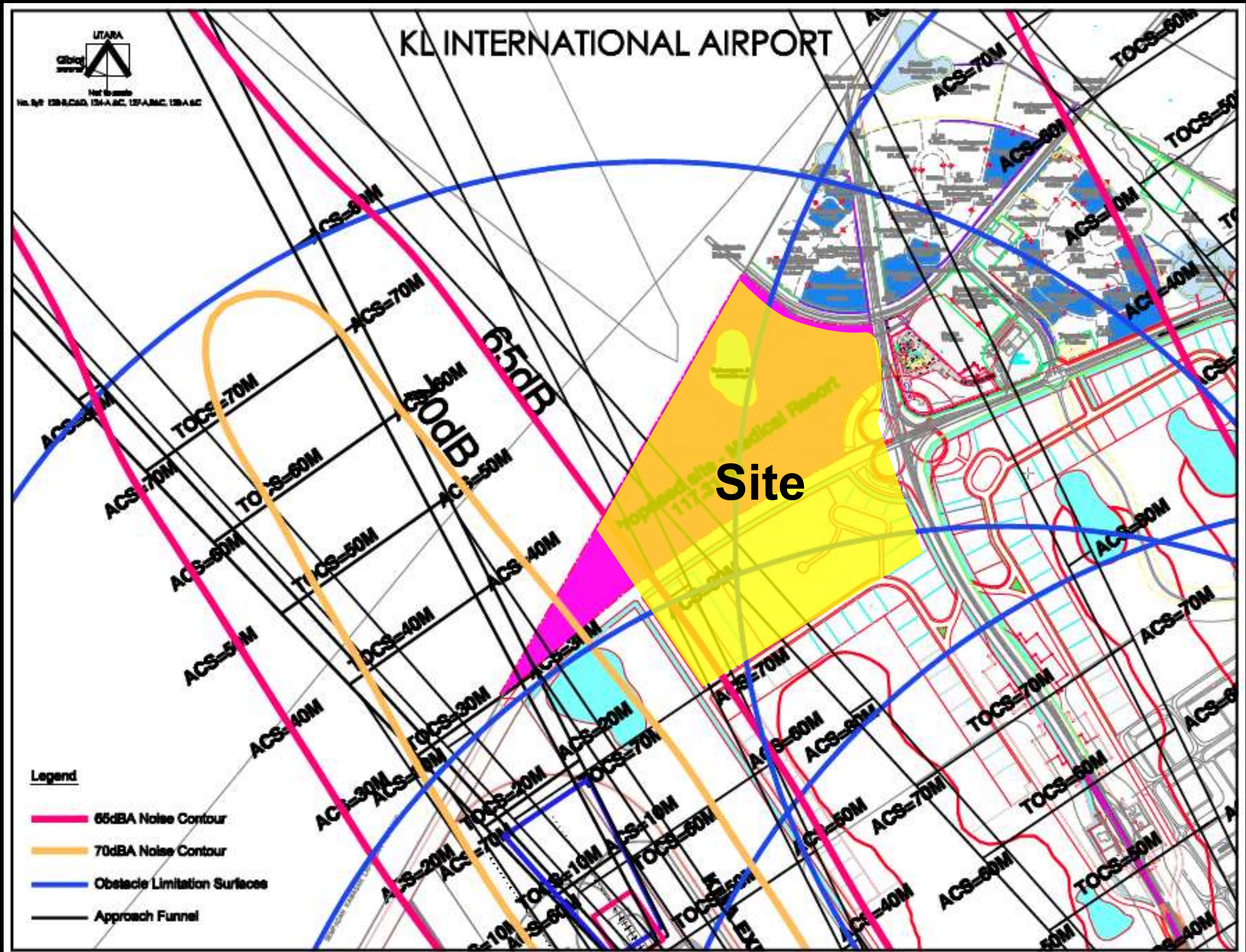
Labu

MAS Kargo

Main Terminal Building

LCCT

MAS Kargo



Phase 1



Phase 2



Phase 3





S W A

