

Public Faculty: my sketch book on how to learn collectively to take responsibility





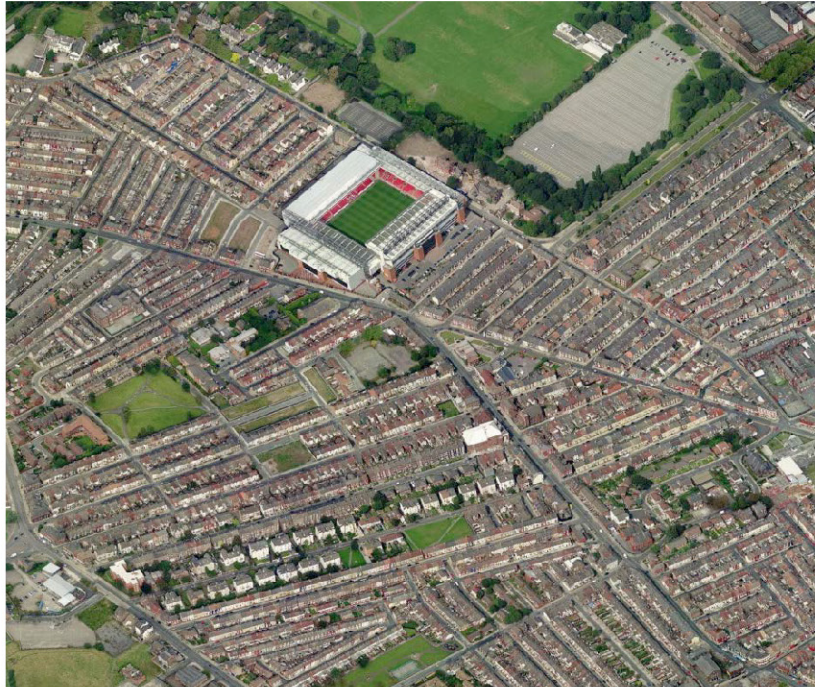
Taking matters into our own hands

HOMEBAKED, A PERFECT RECIPE

Anfield Liverpool, 2010-2014



Development: Housing Market Renewal



2010 Fact: 10 years of waiting



Demolition of 1500 houses left empty
plots



78 new houses arrived



Streets and streets of still boarded up
houses





Sustainable development



At first working at schools and social centres



Asking questions to 'neighbour clients'


notes!!

1/ Cooking will take place in front.
2/ have to have everything on the plan.
3/ They don't need all the window space.
4/ Getting rid of the cabinets.
5/ Same entrance.
6/ Wants the outside to look authentic.
7/ Changing the plan.
8/ They need the door way covered.
9/ Sleazy feel.

Paicon Shaver.

Questions!

1/ Do you really want the door way covered?
2/ Do you need Ambient?
3/ Do you need all of ~~you~~ the window?
4/ How much of the window would you need?
5/ Are you keeping the seating area?
6/ What ~~do~~ kind of image would you like the outside to ~~look~~ ~~like~~ project?
7/ What are you going to call it?
8/ Are you keeping it as Mitchells?
9/ What is the entrance going to look like?
10/ Where are you going to cook?



Learning how to translate



Understanding scale



and building processes



Setting up camp

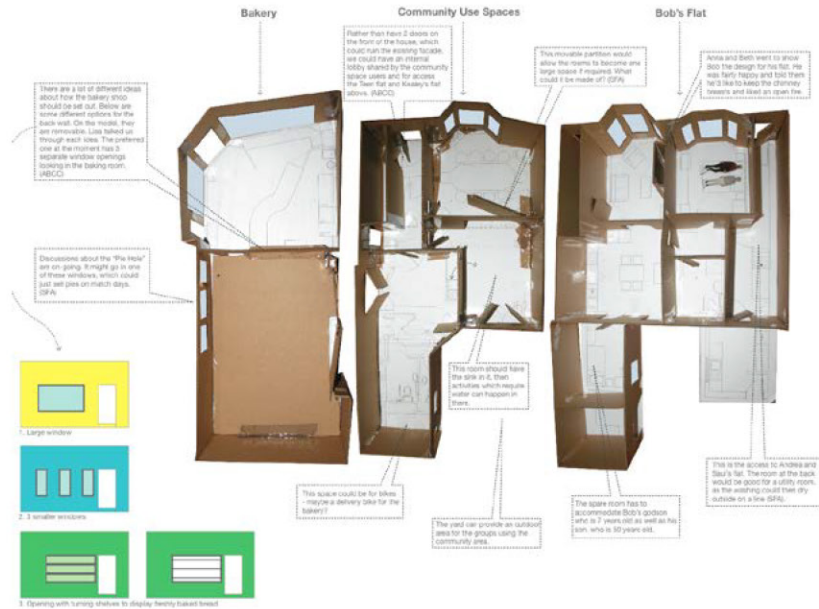


Family business of 60 years closed down



Redesign the actual site

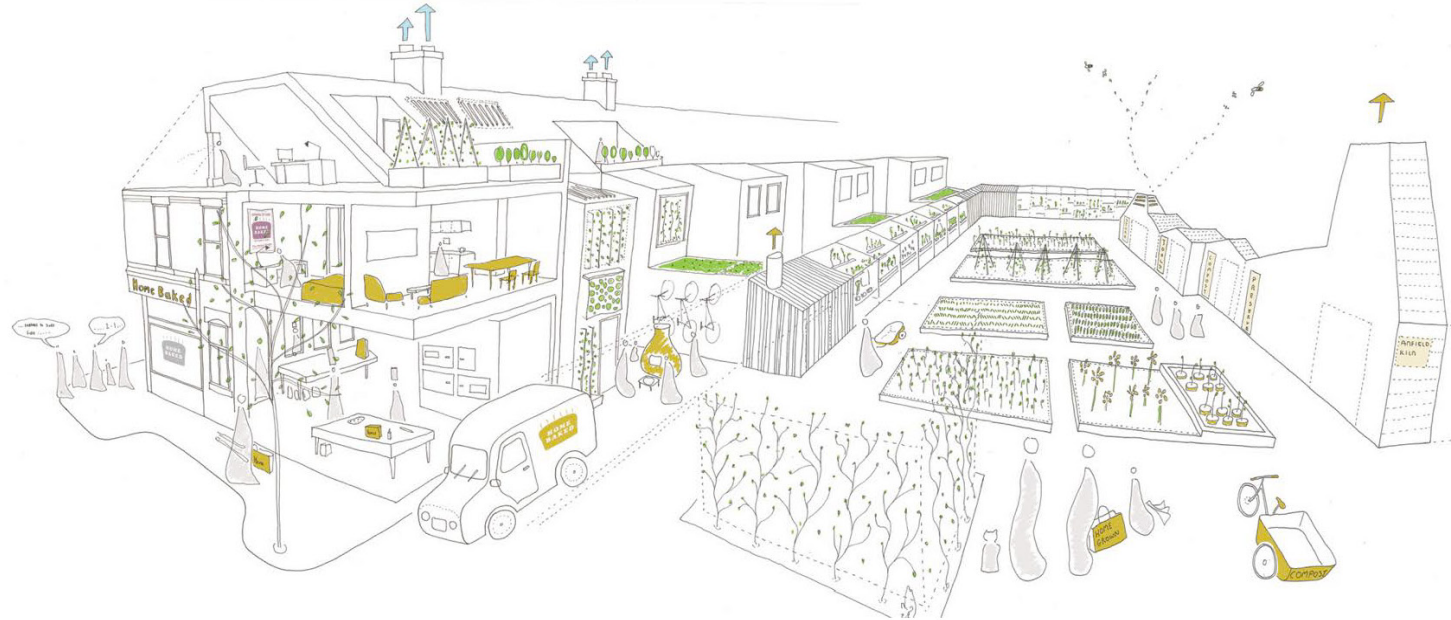
2up2down Design Development Through Model-Making: Ground Floor



Detailed planning



The neighbourhood = a small scale alternative



Sharing Expertise



Community building



Discussing organisational form



Urban Community Land Trust

To develop and manage the housing establish a Community Land Trust - **Homebaked CLT** was established.

- A CLT is a non-profit, community-led organization, run by volunteers, that develops housing and other assets for long-term community benefit.
- Asset-locked so that the value of any property that it owns, and any profit it generates are permanently kept in community ownership.
- Membership organisation, managed along co-operative principles.

Community Land trust and co-op Bakery



Community Development Agency



Tasting and testing on site



Training kitchen



Consumer and workers Co-op



Business: serving on match day



Winning the CLT award 2012



Becoming part of the co-op network



Telling the story of city's failed politics



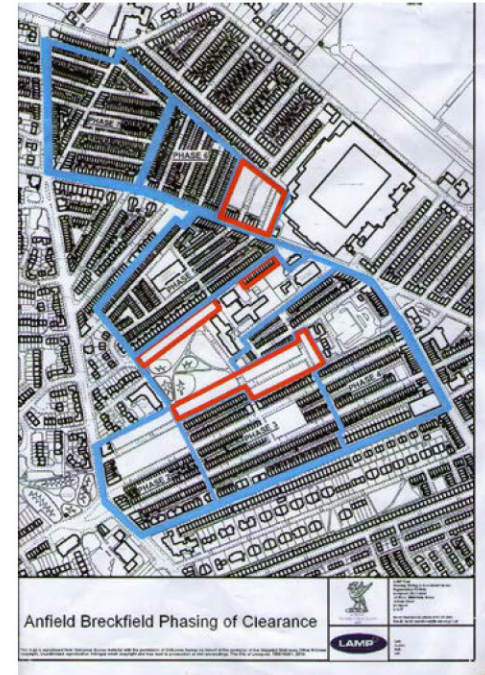
Sue telling the effect on her life



Taking a group portrait



In the Zone of Opportunity



Back in the Bakery

A warm welcome



Asking we walk, but walking, not standing still, is how we develop our questions. Better to step out in what may be the wrong direction and to go creating the path, rather than stay and pore over a map that does not exist.

John Holloway

Becoming advocates



Empowering community



Baking on TV



Kick starting

KICKSTARTER TRIAL TO **Kickstarter?** UNSCOVER great projects START your project [Help](#) [Me](#)


[Dashboard](#) [Backer report](#) [Post update](#) (last: 02/06/2013)

An oven at the heart of Anfield

by Homebaked Community Bakery

[Home](#) [Updates](#) [Backers](#) **494** [Comments](#) [Liverpool, United Kingdom](#) [Food](#)

Funded! This project successfully raised its funding goal on January 29.



494
backers

£18,725
pledged of £13,000 goal

0
seconds to go

Project by

Creating your own network



Multiplying supporters



Darren Turner on December 8 [Backer info](#)

Great project I of course remember the old bakery.
Wish you all every success. I've been tweeting as many players and former players as I can
To try and get you some more support!!
Good luck



Dave Stafford on January 29 [Backer info](#)

What a great achievement! You must be sooo pleased at the support you received. Now the hard work of turning your dreams into the reality of community and people. You cannot fail with the spirit and endeavour you've exhibited. I hope the product lines earn you a great reputation and with that reputation you help change the social, political and spiritual climate of Anfield. Fly the flag for local products and fly the flag for a 'can do' attitude. Well done, you did it! #YESYOU DID!

<http://www.wyds.com/2012/11/26/act/design-a-career-bak>

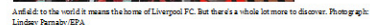
1 year

16-05-13 19:27

<http://www.wpa.wisc.edu/edu/edu-newsroom/2012/oct/31/100>

Bread and houses - Liverpool Biennial pulls off a brilliant mix of art, theatre and social action

Writer **Kenn Taylor**'s mundane tour bus to Anfield with photographer **Mark Loudon** turns into a magical - and very thought-provoking - mystery tour



It's rather surreal to be taken on a tour of a city you live in, but then this is quite a different tour. We start conventionally enough, by the Edwardian splendor of the Cunard building at the heart of Liverpool's regenerated waterfront, but soon we will be heading to the other side of the city – and the other side of Britain.

Open for business

Community Bakery
& Café
Monday-Friday
8:30-4:30
Saturday 10-5



Providing healthy food for the community



A on-going battle for the right to live and work well

