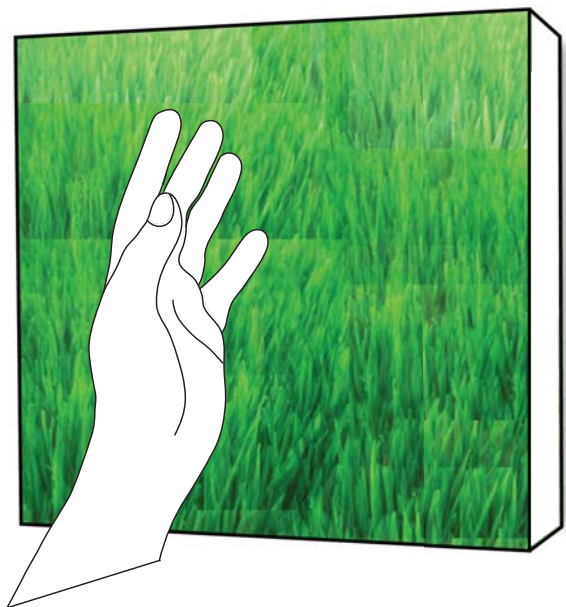
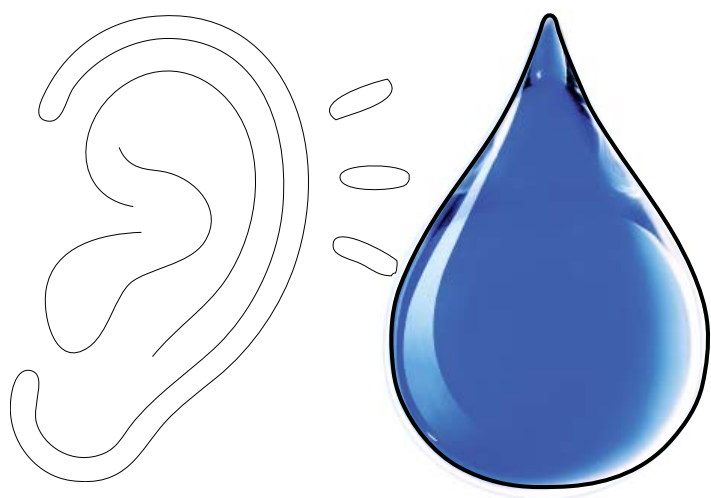


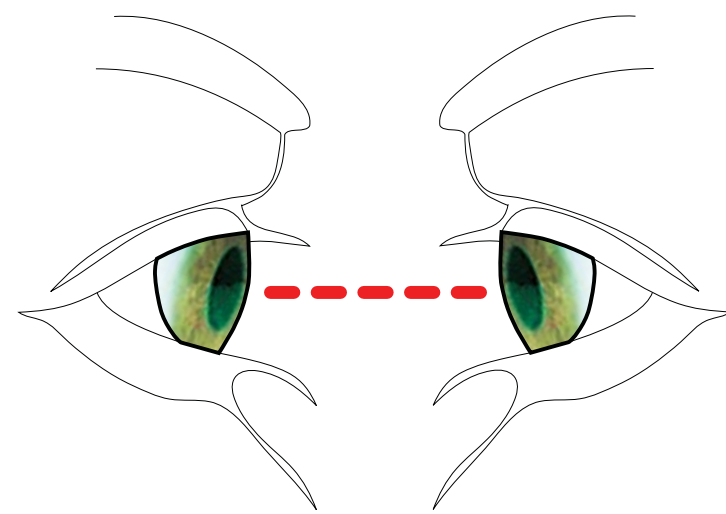
PRINCIPLE: GROUNDING
Provide connection to ground plane irrespective of ability. Equalize opportunity to interact with landscape. Bring landscape into practice of Universal Design.



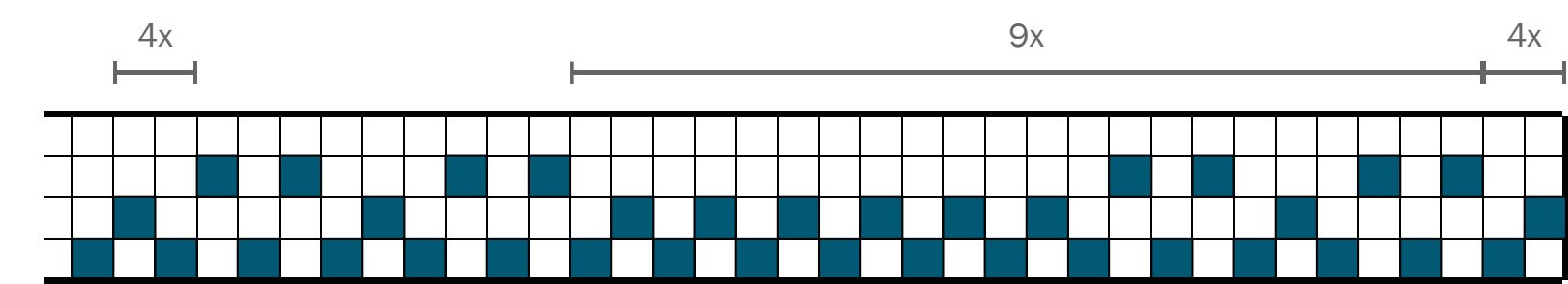
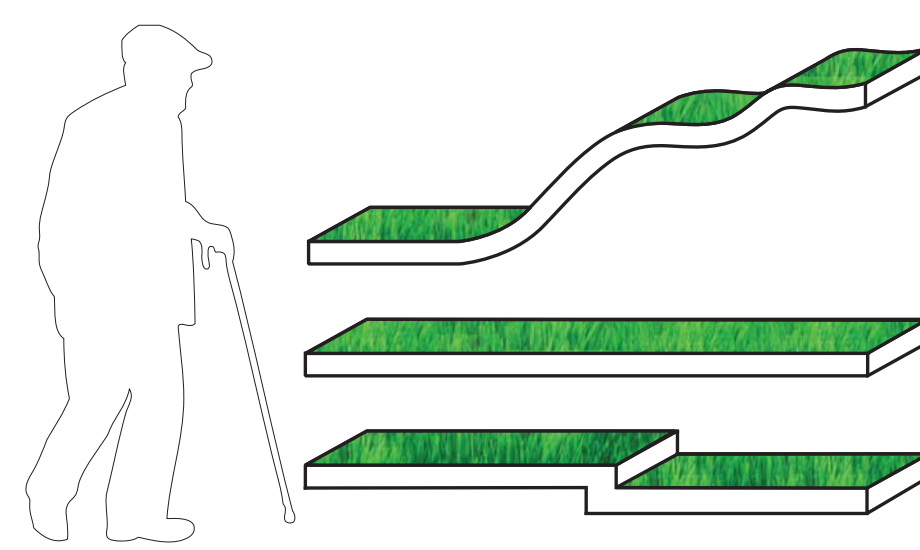
PRINCIPLE: WAYFINDING
Employ water as a major mechanism for sensing place. Simplify decision-making for the user and reduce confusion, particularly for the sight-impaired and mentally-impaired.



PRINCIPLE: EYE TO EYE
Create opportunities for human interaction in a manner in which all can see each other eye-to-eye, irrespective of height differences, age, or the use of mobility aides.



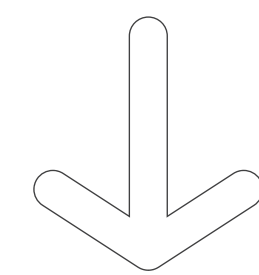
PRINCIPLE: CHOICE
Do not segregate users by ability. Supply them with varying terrains, playful topographies, broad sectional experiences. Disability does not preclude variety.



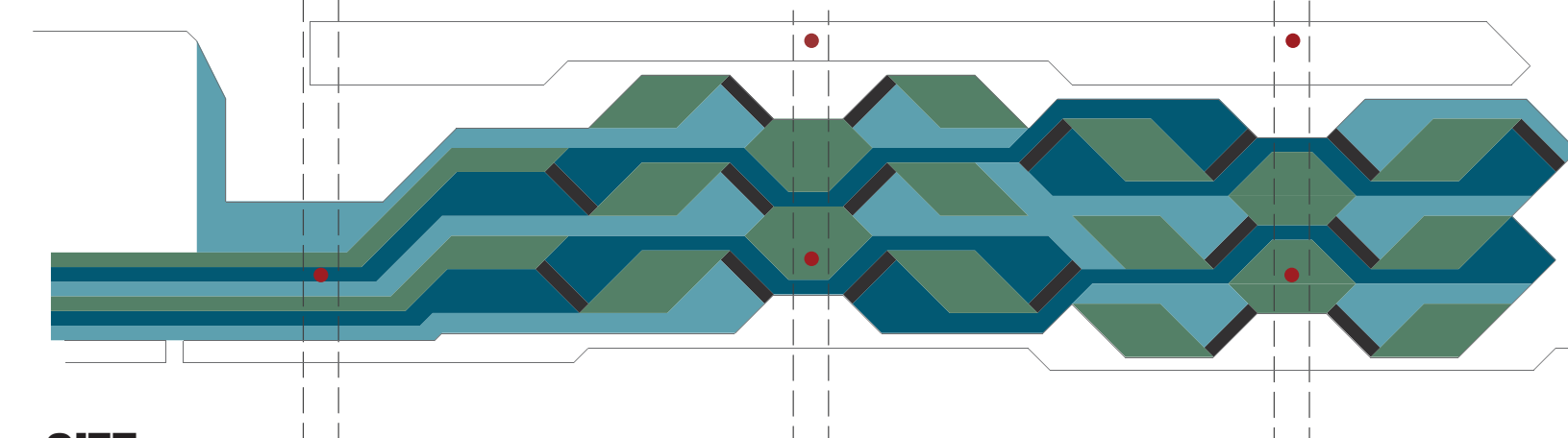
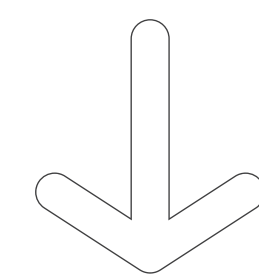
DRAFT



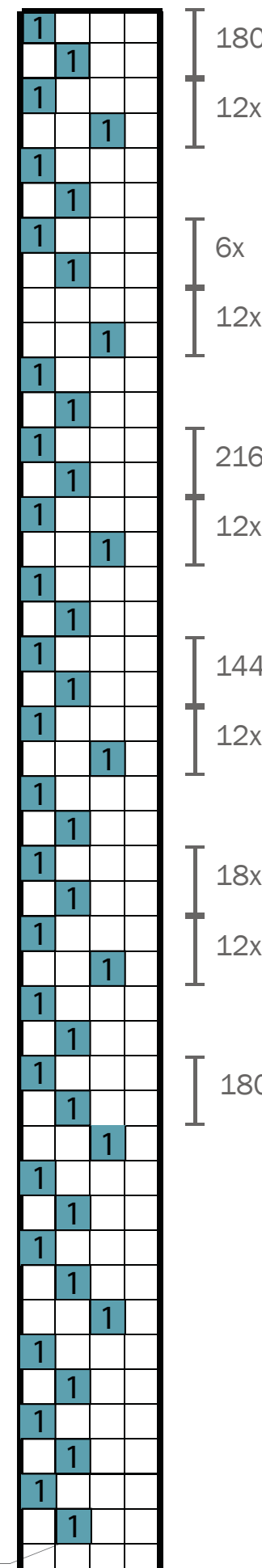
TEXTILE DETAIL



TEXTILE



SITE



SUSTAINABILITY

- East/West orientation of major building axis
- Photovoltaic Array on building skin
- Wind turbines at top of the residential towers

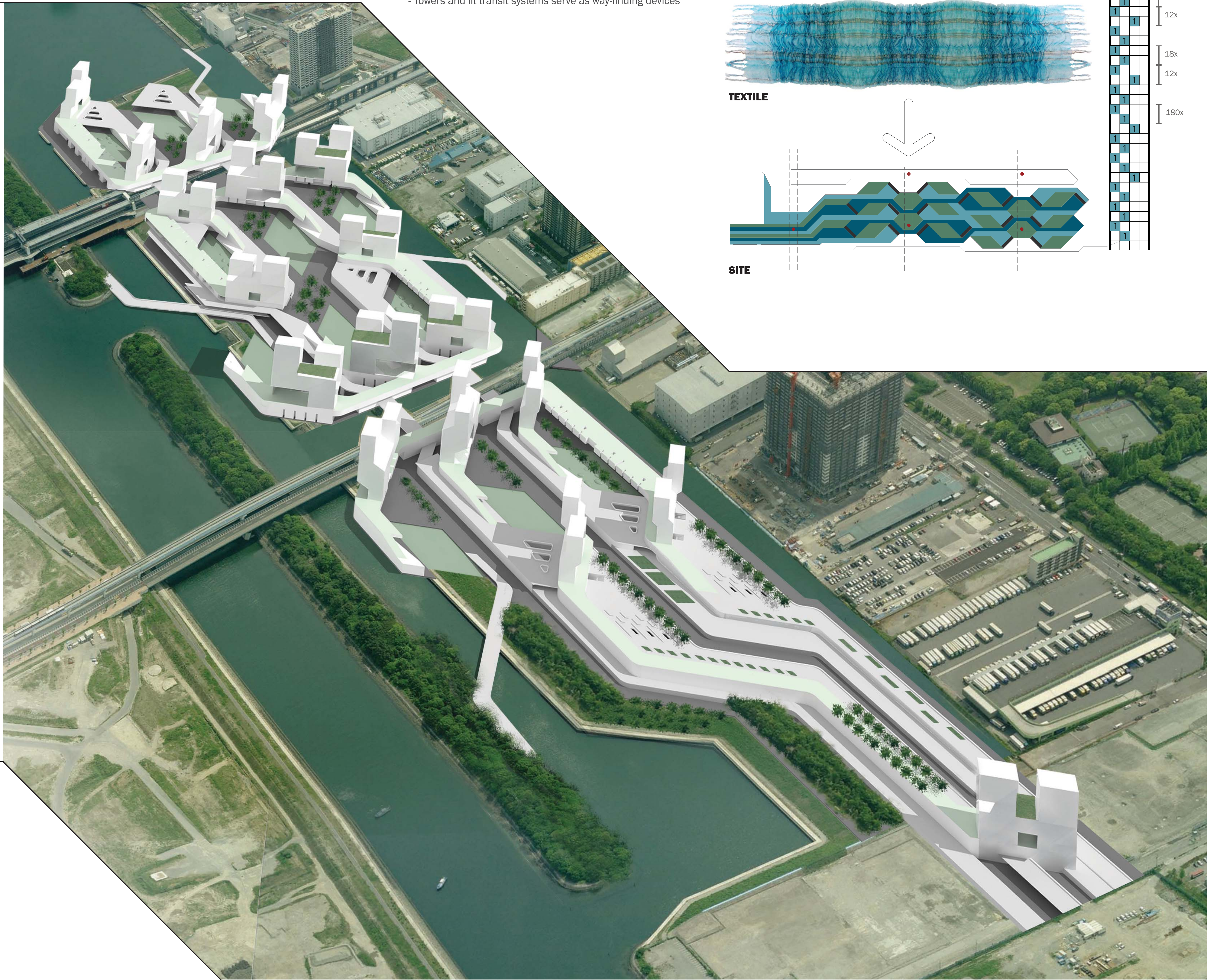
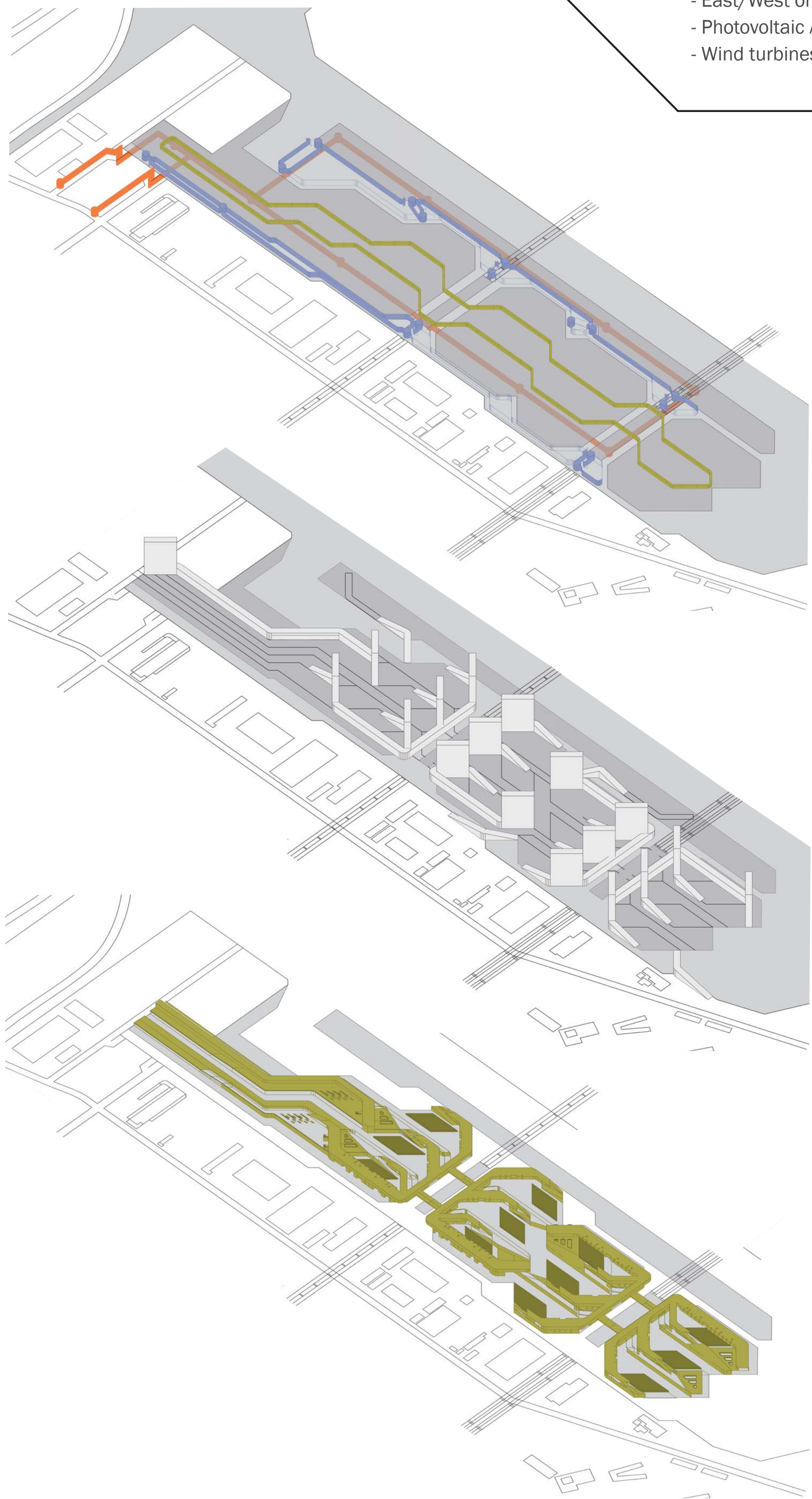
- Rainwater collection for non-potable usage
- Community composting to manage organic waste
- Locally harvested and manufactured products

- FSC Certified building material sources
- Electrical transit system with rooftop PV panels
- Entirely traversable site through accessible sloped walks
- Land & water transit for long distance inner site travel
- Towers and lit transit systems serve as way-finding devices

LEGEND: CIRCULATION
SERVICE
PEDESTRIAN
WATER TAXI

LEGEND: BUILT FORM
ARCHITECTURE

LEGEND: LAND FORM
LANDSCAPE THREADS
GARDENS & ARENAS



WARP & WEFT

CONSTRUCTING TOKYO'S OLYMPIC SELVEDGE



SUSTAINABILITY

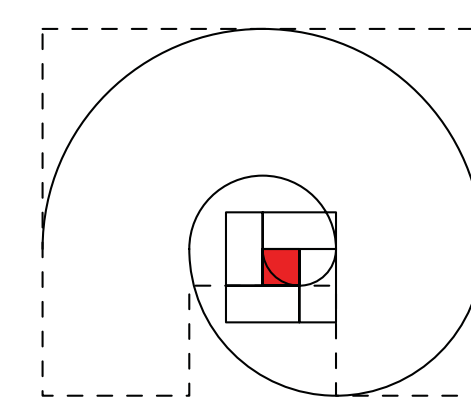
- "Energy Dashboard" in each unit provides energy feedback
- Interior finishes comprised of natural and regional materials
- Kitchen: All appliances energy efficient
- MDF cabinetry with low VOC adhesives
- Bath: Translucent window panel for natural light
- Low-flow/ efficient toilets using captured rainwater
- Laundry/ Work Space: Motion activated lighting

ACCESSIBILITY

- Sliding wall panels with single hand operation
- Drawer type dishwasher and microwave
- Under-counter refrigerator for maximum counter space
- Bath: Curved wall for trunk stability
- Roll-in shower with additional hand-held shower head
- Touch control lavatory faucet
- Bedroom: Pull-down top closet rod

BICYCLE STORAGE

RECYCLING CHUTES



TATAMI MAT / HUMAN SCALE
Housing units laid out according to the proportions of the traditional tatami mat.

RECYCLING CHUTES

BICYCLE STORAGE

60% 3 BEDROOM UNITS
30% 2 BEDROOM UNITS
10% 1 BEDROOM UNITS

1 BEDROOM (x2)

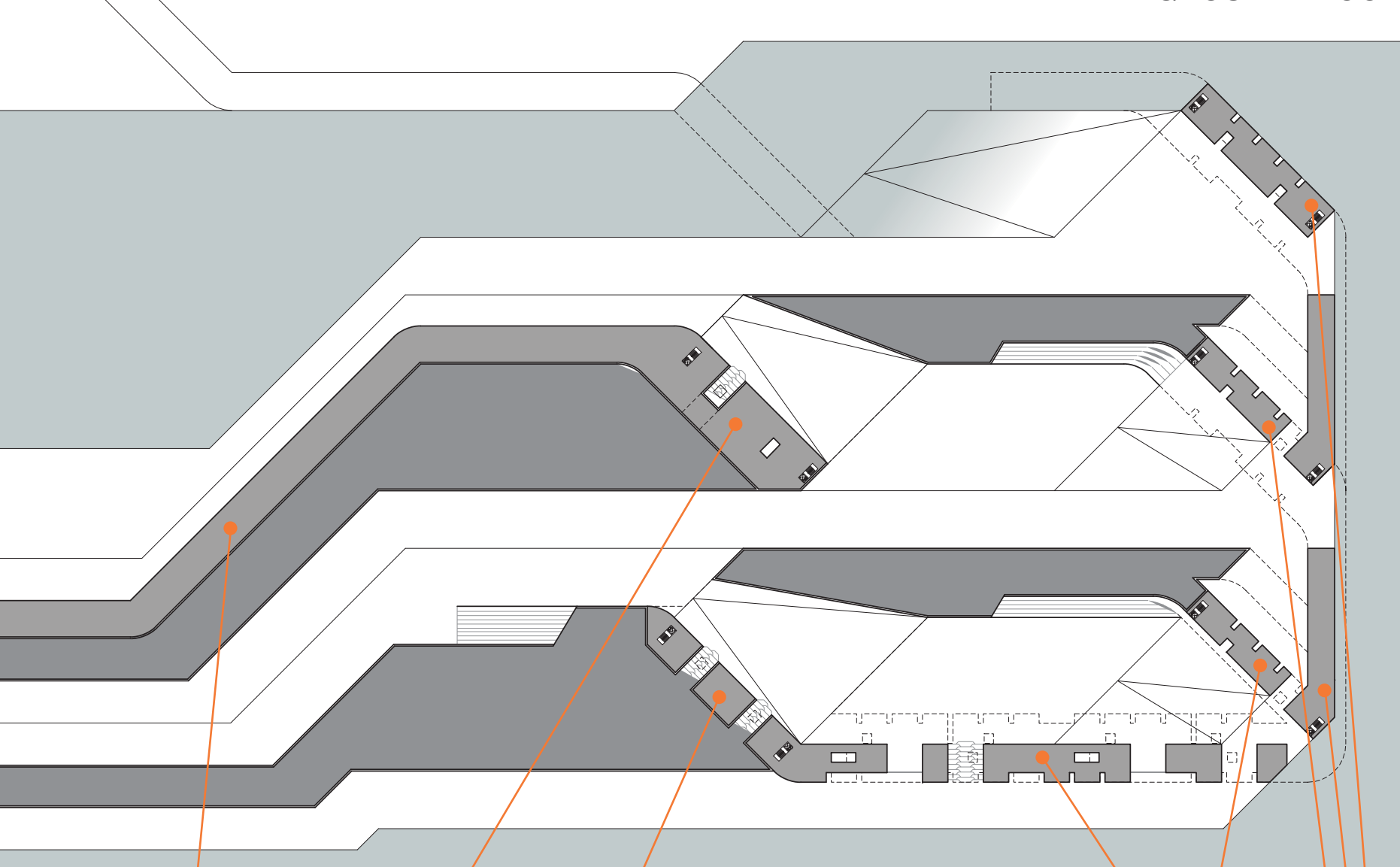
2 BEDROOM

3 BEDROOM

2 BEDROOM

3 BEDROOM

GROUND FLOOR



gym
gym

team offices
pharmacy / grocery /
convenience stores

art galleries / coffee shops /
bars / restaurants
indoor track

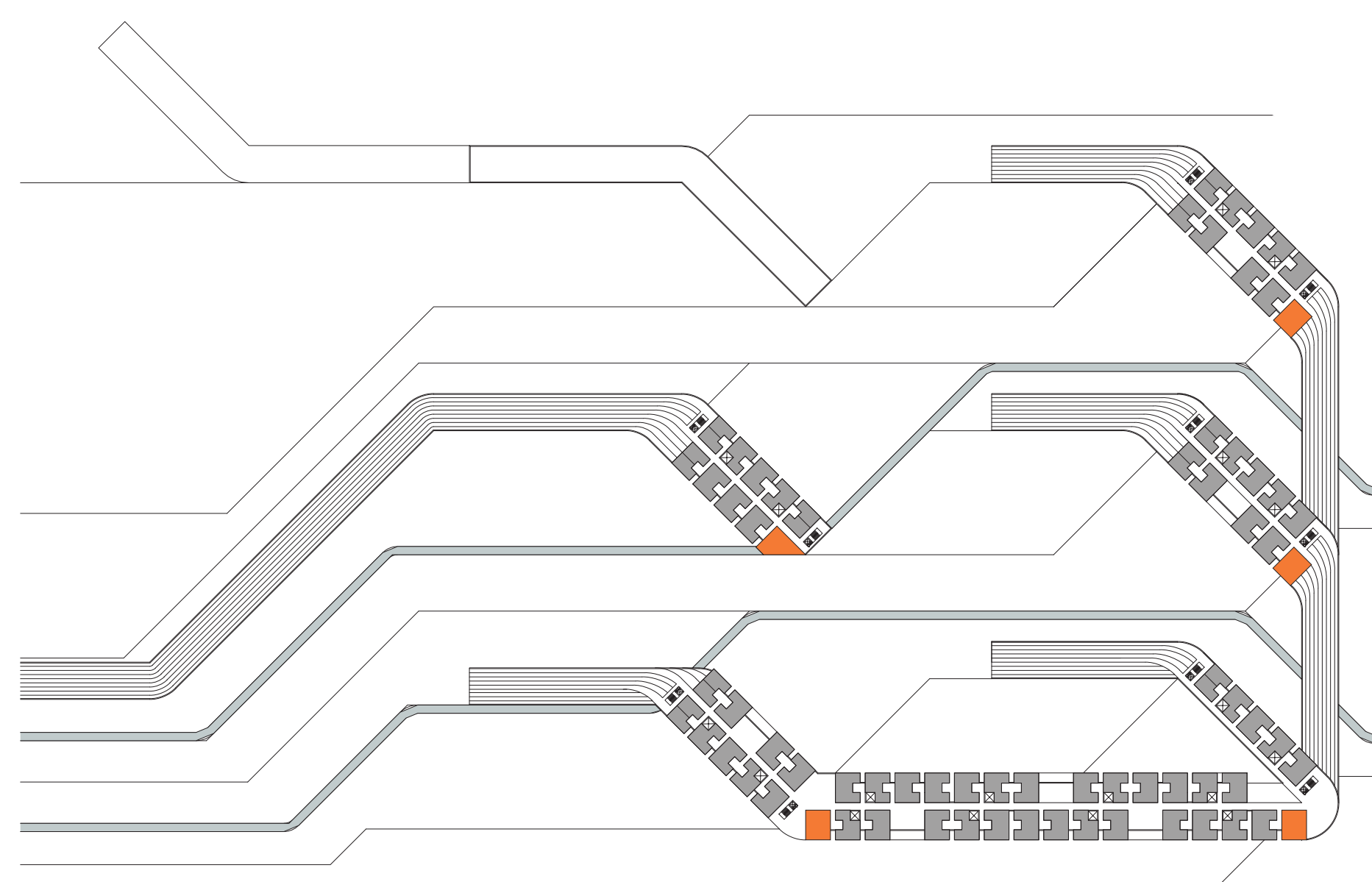
meeting rooms
retail / mercantile

medical support
market

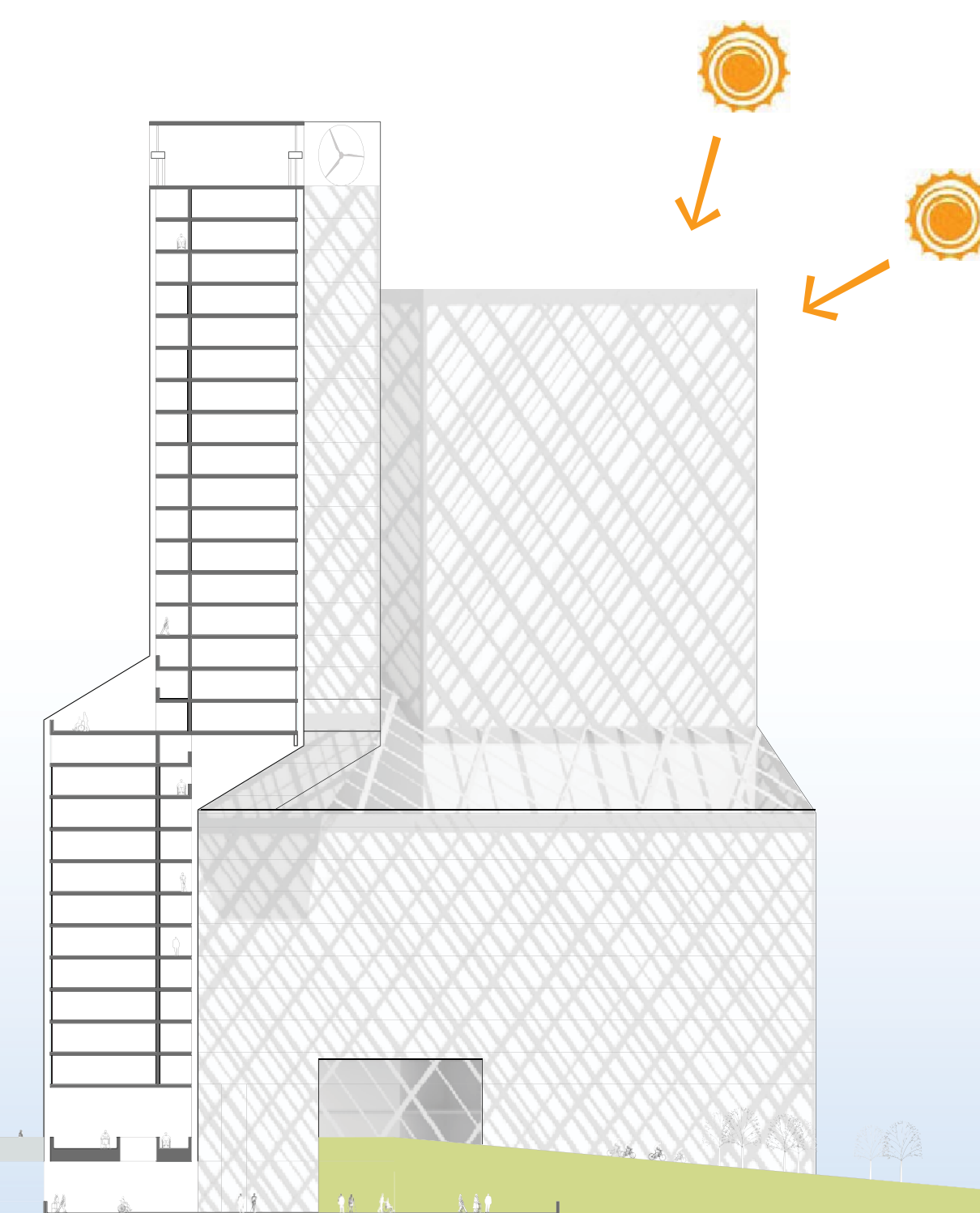
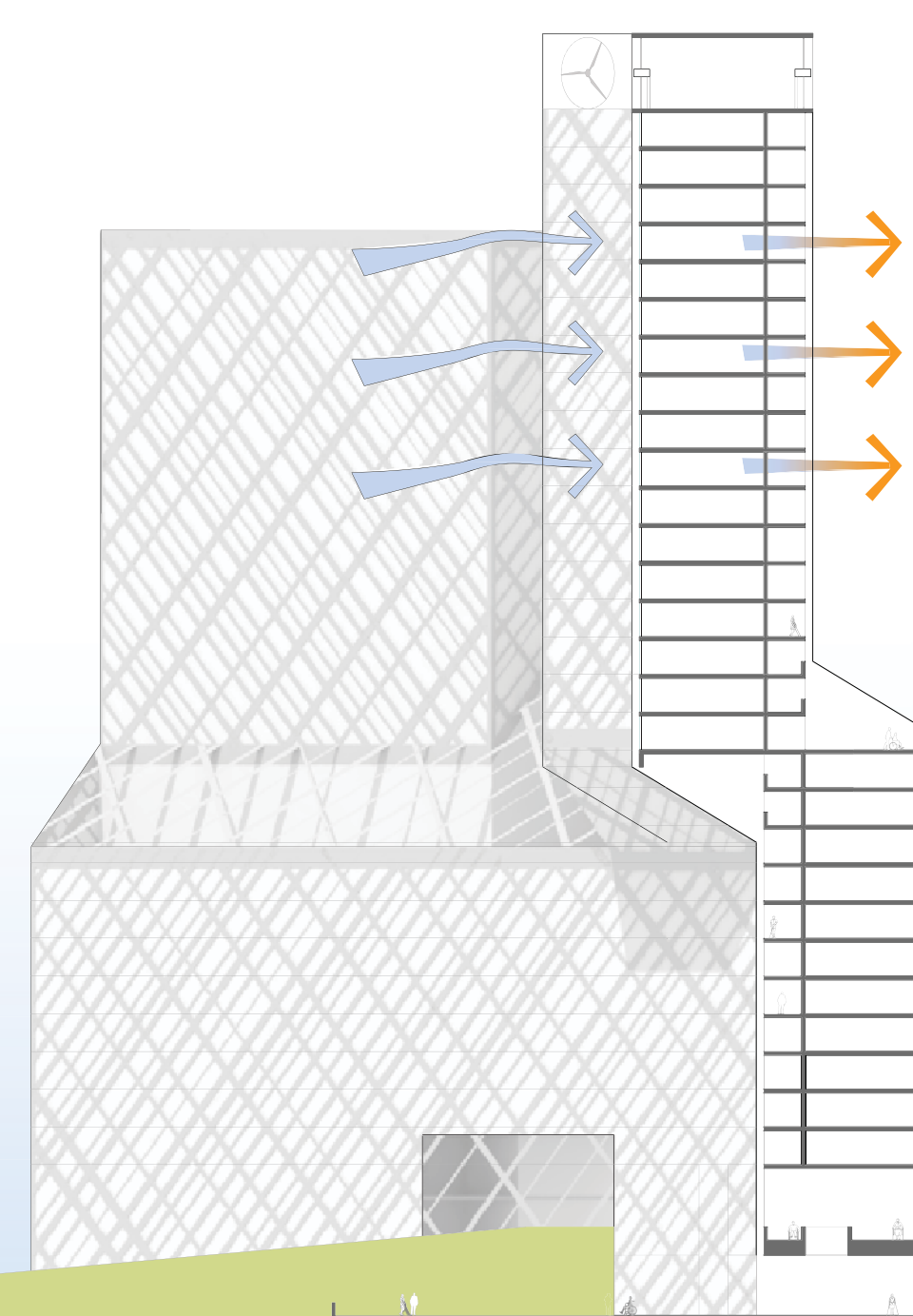
team offices
office

storage
retail

doctor's office
childcare



FIRST RESIDENTIAL FLOOR



OLYMPIC AND PARALYMPIC PROGRAM

LEGACY PROGRAM